

Project CY 8609

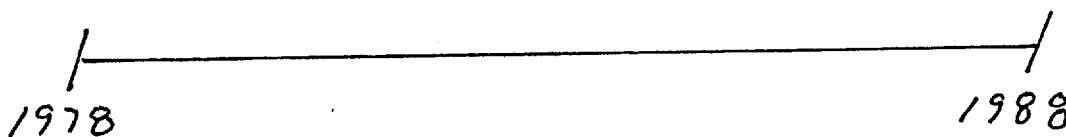
Task

1. Describe the technical facility located vic:

SG1A



2. Within the following ten year period determine if and when any "special events" occur:



\* Note: If you do find any "special events" - - - subsequent sessions will be focused on each separate "special event."

STAGE 6 WORKSHEET

SOURCE:	003
MISSION NUMBER:	8609
SITE:	<span style="background-color: black; color: black;">[REDACTED]</span> SG1A
TARGET:	<u>SIGNIFICANT EVENTS (IF ANY)</u>



[REDACTED]

*Handwritten:*  
Marketed  
since that  
it's not to be  
Don't not to be  
from now. And couldn't  
must be taken too far  
too great a step to prevent  
as to drain resources of the  
it from other activities so  
the people involved who  
want to know about  
the whole project.

SG1J

*2*  
[Redacted]  
*3 Feb 86*  
*F. Meade, USAF*  
[Redacted]  
*1039*

SG1J

D

AZ

EZ

T

I

AL

ALS

32

from  
mud

curb

rough  
hand

solid

cold  
white

AL BL  
curb  
cement  
walkway  
overpass at  
BYU

structure

large

5 legs

round

foot

ferrous

green

people

yellow

metallic  
color

4 1/2 many other elements

SVI

3

S2

D

A2

EI

T

I

AL

AS

translucent  
vibes  
color

A2 B6  
keep, inter  
cut istyng  
color

lemon  
yellow

Structure



slipping

walk  
open

d.m

nonsteady

AV

banes  
landscape  
black

mass  
structures

figures  
militar  
government  
official civilian

S U I

4

S2

D

A1

E1

T

I

A2

A5

aircraft  
ready

54 1/2 part of site is concerned with "industrial plant"  
like any large institution has for sppt. Larger  
than normal "i. p." establishment to compensate  
for environmental conditions or to cater.

Expensive  
type  
missiles  
present

- rush
- slight
- stingey
- small
- red
- rough
- grit
- red
- smooth
- hank's sand
- Product lignite
- amber
- red
- green
- shiny

Large  
structure

54 1/2 [unclear] but at a consistent level + expertise  
Observed mission + its very active but any crisis events  
occur within expected limits of expected types.

SVI

5

S2

D

AJ

EI

T

I

AdL

Ab

powder blue

person

in charge

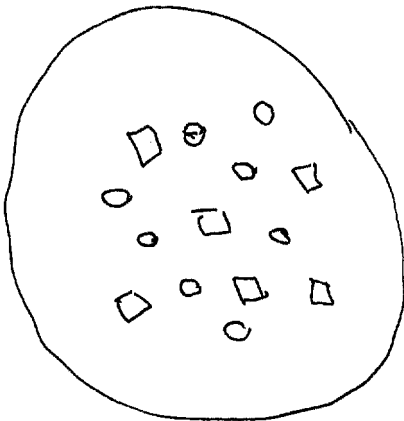
Frustrated

S4 1/2 frustrated not because he's being harassed but because things aren't happening at the rate he wants. But he's the type that is long on drive + ambition but short on patience, + even if things happened ever faster, it would never be fast enough. "Things" involve other people performers versus but interlocking functions with a finite and concrete conclusion to finally be reached.

white  
green  
hard  
smooth  
sharp

small  
curved  
rounded  
thin  
solid  
hollow  
springy  
flexible

peeps  
objects  
components





S2

ID

A2

E2

T

I

#02

Als

shy

white

clothes

integrity  
interlocks

activities

S4/2 <sup>services</sup> stages or benchmarks in process that must be reached.

sub trials - sub element are tested

True phase - checking on a limited operational basis to see if all connections carry the loads expected ~~to provide~~ to the write interchange or nodes or standby boxes/locations.

Trial  
Phase  
Objects  
emanations?

Trial  
Phase  
attributes @  
emanations?  
highly technical  
complex  
metal  
plastic  
not  
cold  
smooth  
burnished  
ultra duct  
heterogeneous  
construction

large  
rounded  
wired  
irregular  
shaped  
angle  
curved  
ribbed  
slanted  
adjustable  
electronics  
powerful  
to look  
dangrove  
"sounded"  
with p. 7  
low p. 7  
steady  
clear  
shiny  
flat  
intricate  
microengineered  
elliptical  
shaded

Trial  
 subjects  
 emanations?  
 evaluation  
 verification  
 assessment  
 calibration  
 manipulation  
 projection  
 power  
 "weapon"  
 Effects  
 Radiating  
 Emanation/Emission  
 Demonstration  
 Concealing  
 Introducing  
 Coercing  
 Stifling  
 Technology  
 Physics  
 Alternatives

Trial phase  
 Topics  
 emanations?  
 controlling  
 curiosity  
 anticipation  
 Justification  
 Satisfaction  
 Culmination

S2

D

A2

E I

T

I

A2

Als

SU I

SU 1/2 requires high voltage + megacycles - very high levels of power - to accomplish purpose.

Aesthetics totally disregarded in construction - purpose is all consuming in design.

Structure

metal

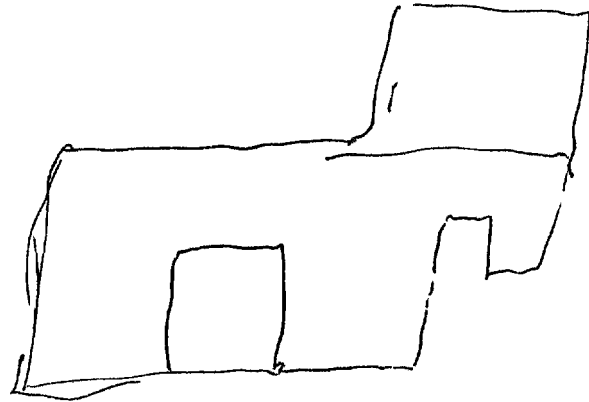
large

solid

masonry  
metal

SU 1/2 old part + new part.

rectangular



large

add wings

52

D

#2

E1

T

I

BOL

ALS

S VI

betweens

constraints

front end

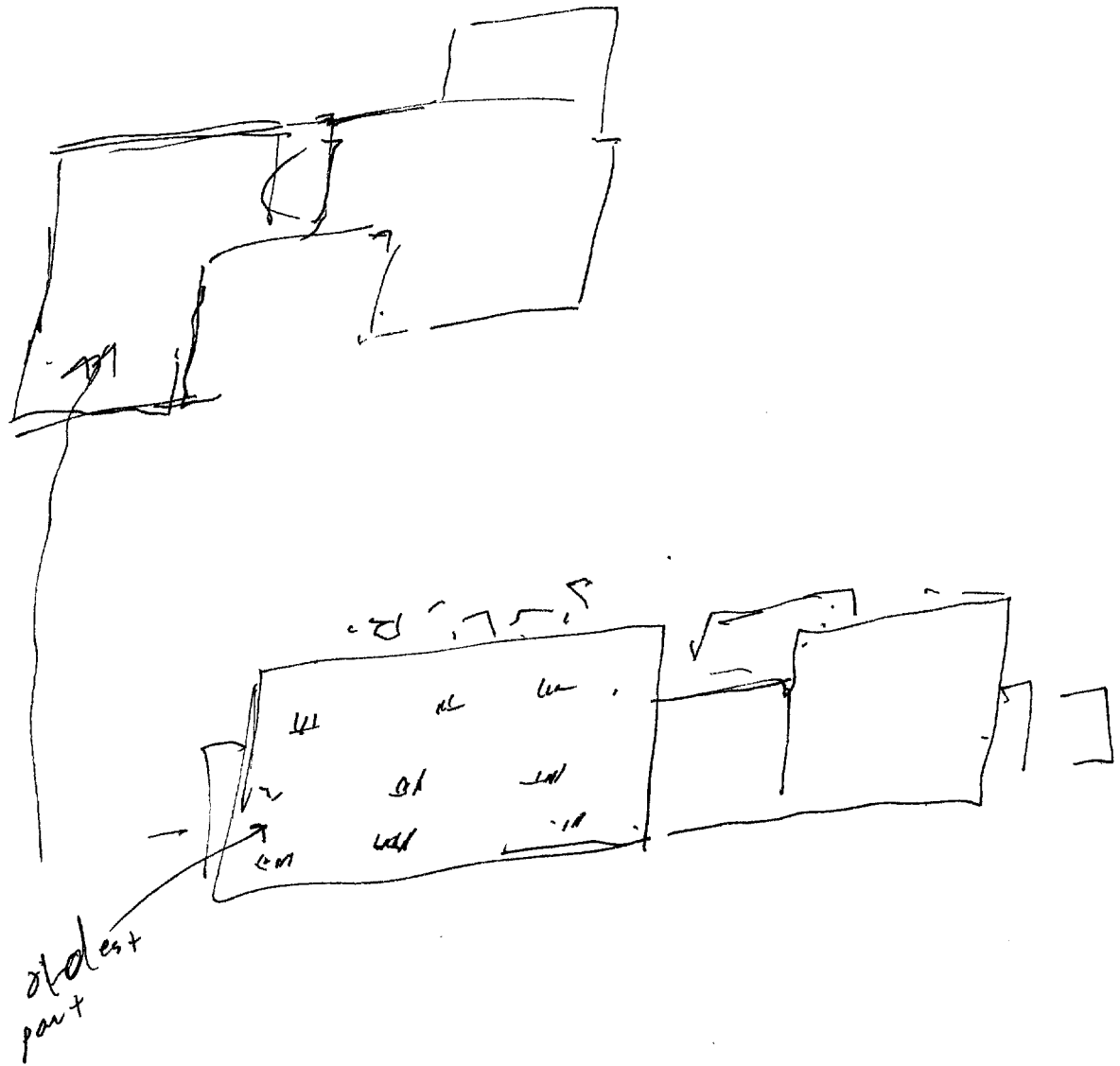
50/2 some parts lower some parts higher (i.e. <sup>later</sup> additions to structure). Scientific "theme" to bldg.

possible  
openness  
towards  
inside-  
like a bay,  
or courtyard

Staff  
on rough  
sketch  
for various  
functions

"like"  
microscopy  
some of it  
industrial  
K&E activities

A1 B1  
not a  
place I would  
like to be  
when <sup>it's</sup> operating



SVI

11

52

AZ

E I

signature

I

AZL

A15

- "markings"
- "stop points"
- "indicators"
- envelope
- leadase
- odd frequency
- bandwidth
- color spectrum

54 1/2 what analysts & monitoring agencies would  
 pick up as far as outside activities &  
 device generated phenomena.

54 1/2 indicators - relevant/significant people gathering  
 changes in sety patterns, RF scheduling; <sup>equipment</sup> interference  
 patterns; power shifting; a/cft operation in  
 vicinity.

Site ~~See~~ <sup>specific</sup> construction + assembly of some actual device or equipment which is new/experimental, dangerous w/ perhaps weapon potentials + ~~will~~ <sup>requiring</sup> high power levels to accomplish purpose. Sub assembly trials have taken place, + soon in the future will be a major trial "run" of virtually the whole device. It won't be "finished" yet, but all major portions will be ready for interactive/interconnected testing. It involves meticulous construction, + miles of wiring engineering. Caution must be taken to avoid too much "signature" density the best to avoid unwanted outside attention. Device + ~~is~~ <sup>is</sup> located in a structure which is part old (masonry) part new (partially metallic) which has a "science theme" about it, it constructed haphazardly, and may have wings + a courtyard or open area associated with the middle part of it.

1154