

E X A M P L E

~~SECRET~~/NOFORN-SKEET CHANNELS ONLY

PROJECT SUN STREAK (U)

Session Procedures Report

FORMAT

099  
1308  
1407

WARNING NOTICE: INTELLIGENCE SOURCES AND METHODS INVOLVED

Control Number: 8606

Nickname:

Date of Session: 7 AUG 86

Target Country:

References:

Session Number: (CRV #3)

Date of Report: 7 AUG 86

Mission Status:

Technique Utilized: CRV

Source Identifier: RV-021

1. (S/NF/SK) TASKING: (Same as CRV session #1 & #2)

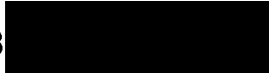
2. (S/NF/SK) SESSION: Same encrypted coordinates. Session proceeded per SOP.

3. (S/NF/SK) SUMMARY: Site involves an event brought about in a civilian/military scientific environment. Two of the people associated with the event have differing perspectives — one is purely scientific and looks at this (event) as the beginning of future possibilities, while the other is more concerned with the tactical/strategic ramifications and the effects it could produce on <sup>(against)</sup> others. → The event involves bright, glinting light in radiating

rays.  Very large, dark.

SG1A

4. (S/NF/SK) FEEDBACK: Some was provided with a picture of the event.



071308 Aug 86  
FBGM  
Ed

873001  
815381 Miss Bush

873001  
815381

A rising eye  
across high  
down  
B structure

3<sup>2</sup> grey  
smooth  
cold  
dense  
long  
narrow

AE bush - closed  
no feeling

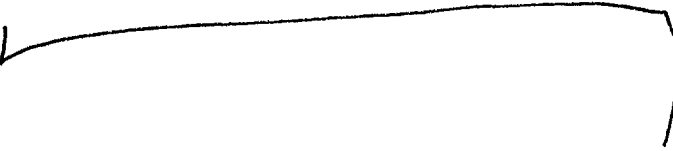
873001

815381

*Miss Bush*

873001

815381



*A across  
side*

*Miss Bush*

473001

815381



*A across  
slightly down  
down sloping  
down  
side  
below*

*5<sup>+</sup> green  
brown  
moist  
marshy smell  
shelving  
quiet*

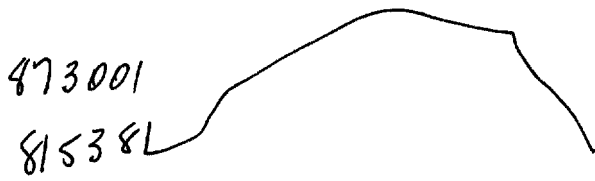
inland

Ad. fresh - like  
analysis filtering  
through trees

873001

815381

Ad. fresh - 2 feeding like line  
standing in the  
middle of a meadow.

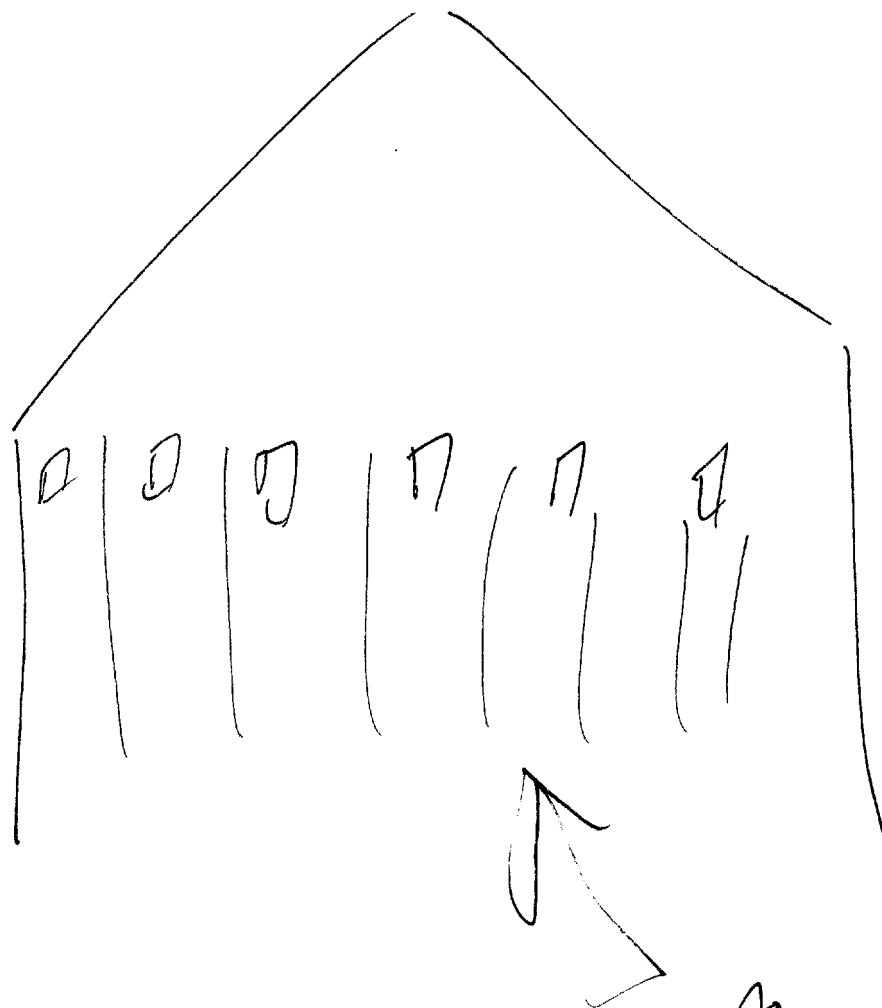


A rising  
 angle sloping up  
 peak sloping  
 down angle  
 down  
 orbit  
 B structure

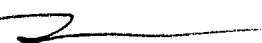
5 white  
 green  
 long  
 wavy  
 jetted  
 full  
 angular  
 wide

ADT/ AI Bush - ?

AD Bush -  
 beam



*As v detail sketch*

5 mi up structure should  
be visible 

A curving  
around  
solid  
ring  
B structure

5 -

A - fresh -  
plane

5 mi. up something  
should be visible      Miss Bush

5 mi. up      54" ±      dark open stretching  
movement red glow

As fresh -  
distribution  
of challenge



5 mi. up

5<sup>2</sup>

D

AE

EE

T

E

Ad

AI S

Circular

rumored

below

glistening light

radiating rays

brings

blinding

As for the -

come of

light

origin

S<sup>2</sup>

D

AI

EE

T

I

Adv

A/S

date

method

structure

character

high walls

are fresh -  
like they  
were taken  
from rock

long corridors

will

people  
grey clo thing  
highly completed

5

D

AI

EI

T

I

ADL

ALS

Conradts

§ 4" 2 - these people are  
just workers - not  
directly involved

ADL branch -  
SDI should

52

D

AI

EI

T

I

AI

AI S

Closest in  
hidden /  
disguised

AI or fresh -  
underground  
facility

ADL Break - people are beautiful and have  
brought about a steady devious tactic  
to disguise actual events. In other  
words, ~~that~~ the event was purposefully  
created to distract attention from what  
is actually going on. Military / Civilian  
Government. Scientific.

52

D

AI

EI

T

I

ADL

A/S

1 person  
chry

intellig

strict  
demanding  
chry

"in charge"  
authoritarian

hatched

dark green uniform  
medals

busy

belt around waist  
& over shoulder  
dark-hair

5<sup>2</sup>

D

AE

EE

T

I

AE

ALS

2<sup>d</sup> person

open white coat

disheveled

billiard

scientific

leader

5'4" 1/2 - seems to be a dissention between  
 the two people as to the proposed  
 outcome. AE looks - 2<sup>d</sup> person  
 is more like a Doc-type - unsharpened  
 in the scientific ramifications. 1<sup>st</sup>  
 person could care less about all  
 that, he is only concerned that  
 the event is performed to direct  
 the point

S<sup>r</sup> D AY EI T I An AS

phenomena  
for gathering  
successful - fair  
accomplish

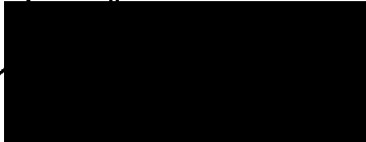
An fresh -  
shown  
capability of  
total  
distribution



~~Event is a phenomena (man-made) created  
by "mistake"~~

Site involves an event brought about in a  
scientific / ~~or~~ military environment. Two of the  
people associated with the event have differing  
but correct <sup>(perspectives)</sup> is purely scientific and  
looks at this as the beginning of future  
possibilities, while the other is more  
concerned with the tactical / strategic  
manifestations and the effect it will  
produce on others.

SG1A

The event involved bright glint/iridescence  
in red/IR range. Are these   
Very large

stop 1407