

SG1J

Monitor

09 0911 APR 86  
FT M end, Ma

Pi.	Bach	Pair	
AV.	Man	M ad	Holl.
Ar.	L/w	Interloc	

022927  
597769



8604  
101  
099  
9 APR 86  
0911  
2

082927

59776T



A across  
blued

B water

A down  
small  
blued

B water

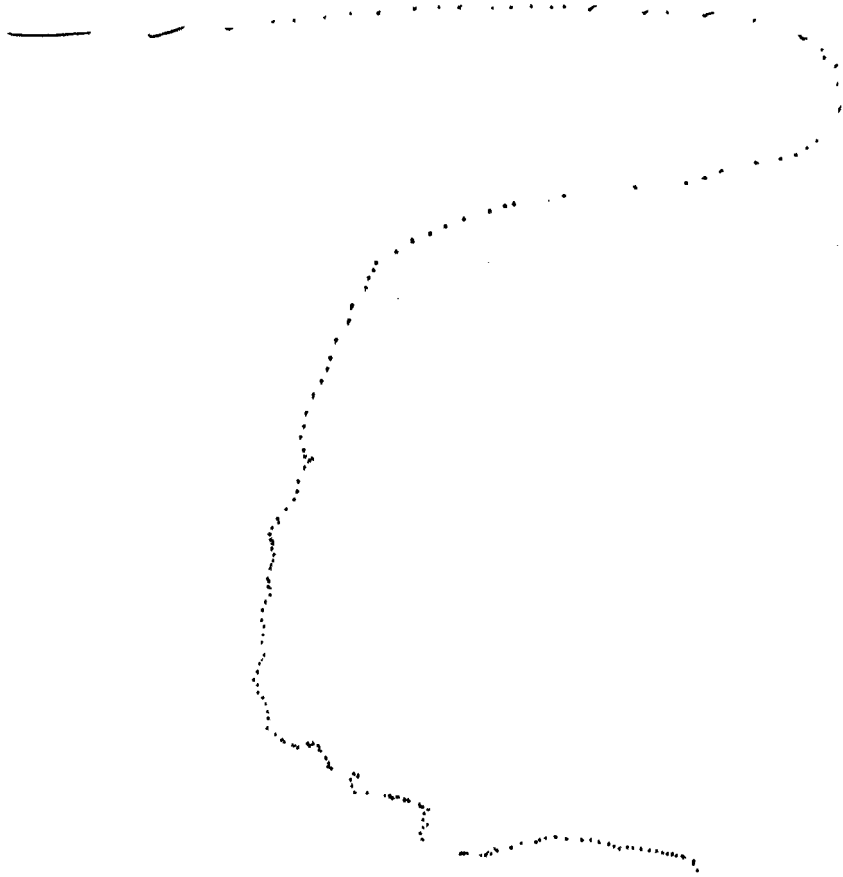
A over  
angle  
down  
hard  
man made

B structure

A. down  
way  
hard

B land.

082927  
597769



TRACKER  
BREAK

GALPAGOS.  
BREAK

082927  
597769



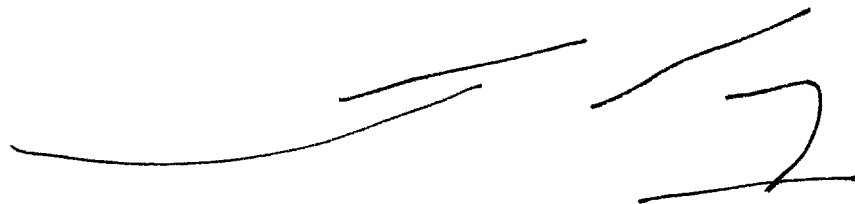
a across  
slaps in  
hard

P land

A. up angle  
across  
hard  
man made

B structure.

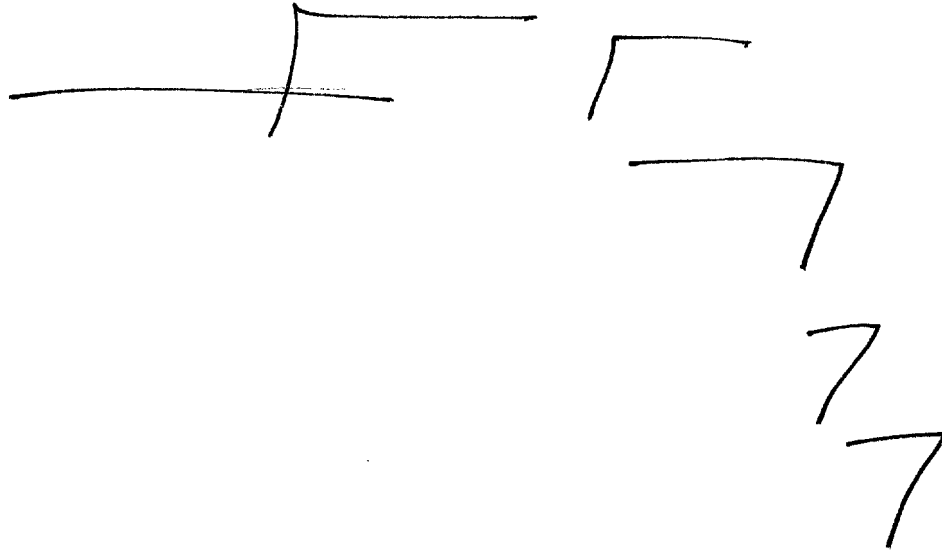
082927  
597769



TM Bush

082927

597769



A. across  
 hair  
 B land

A up angle  
 are across  
 hand  
 Man made  
 B structure

A. up  
 angle  
 across  
 hand  
 B structure

A. across angle  
 down  
 B structure

Black  
gray  
brown  
silver

ROUGH  
TEXTURED  
PATTERNED

Tangy smell

AOL BREAK  
SMELLS LIKE  
PEPPERMINT  
LIKE SWEETS

FRESH smell  
FOOD smells

THICK TASTE

AOL BREAK  
TOMATO STEW

COOL  
BRISH  
FRESH  
DRY

SWISHING  
CLUNKING

HUMMING  
CLANGING.

BLUE  
BROWN  
BRONZE  
OCHRE  
YELLOW

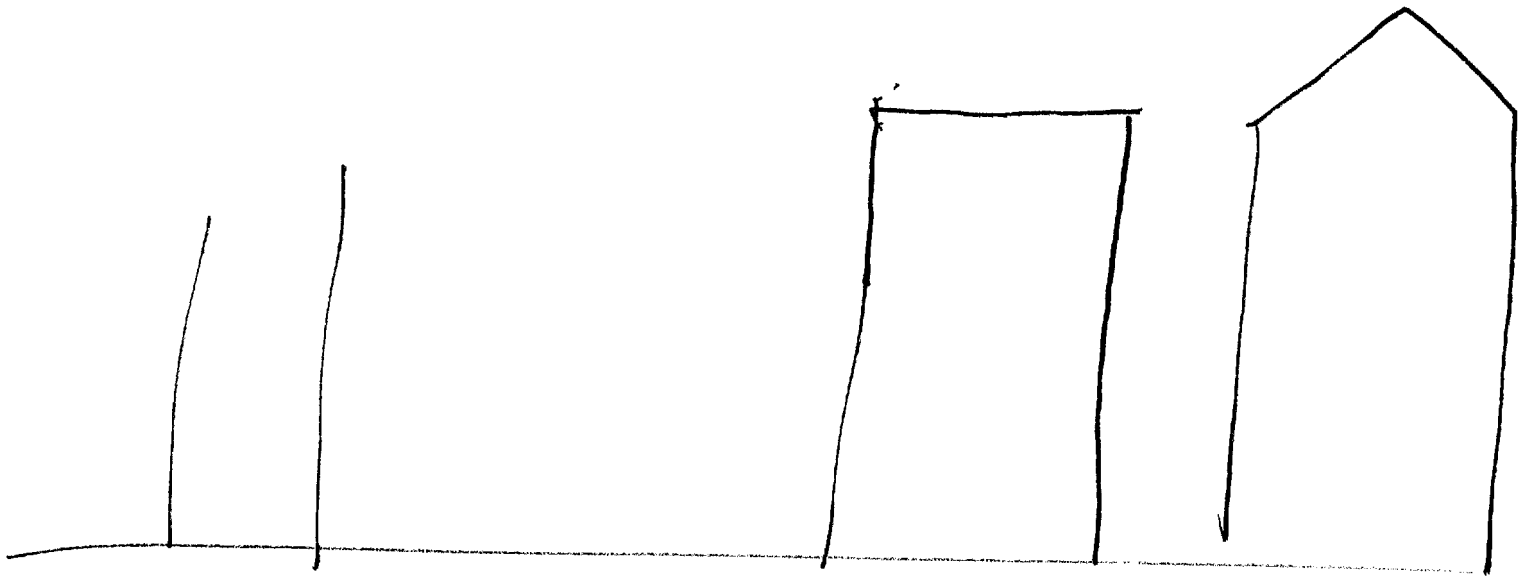
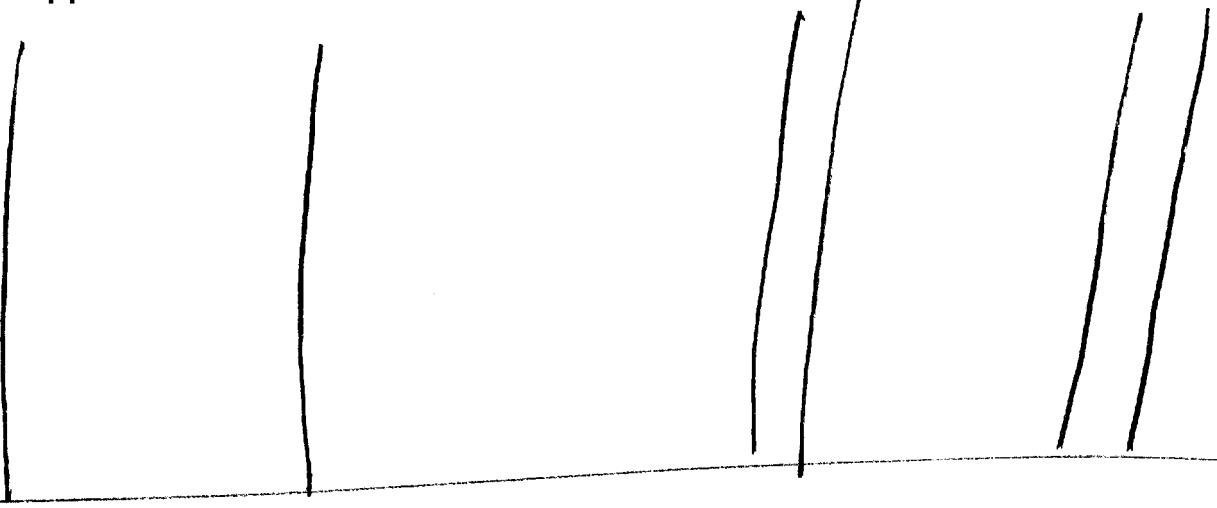
TAIL  
THIN.  
AROUND  
NARROW  
ETA

ALL BREAK  
STOPPING

AT BREAK  
EXCITED.

AROUND  
LONG  
NARROW  
THIN  
ENCIRCLED S-4  
DOMINATING S-4

AT BREAK  
IMPRESSED



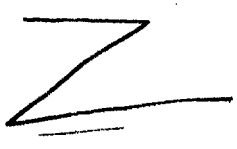


SK

SK

SUMMARY: Site is flat and rising  
 land. At this time it is cool, fresh  
 and brisk. The area has tangy, fresh smells,  
 which remind me of perpermin. There are  
 also food smells. There is a swishing and  
 a clucking noise there. There are also  
 humming and possibly clanking <sup>noises</sup> smells.  
 There are structures at Site. One  
 set of structures composes a series.  
 (interrelated somehow. i.e. physically, functionally  
 style). There is at least one other and  
 probably at least two other structures  
 that are not part of this series, or  
 are important for some reason (V.F.I.)  
 There is a tall thin structure and  
 also a long narrow structure at site.

Inside large structure  
should be visible



- A. hard  
man made  
along angle  
acute angle  
Bank
- B. STRUCTURE

LIGHT BLUE  
TURBANY

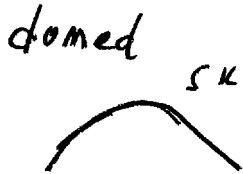
BUILT UP  
DEPRESSED

SMOOTH

Adequate

LARGE  
OPEN

Bounded



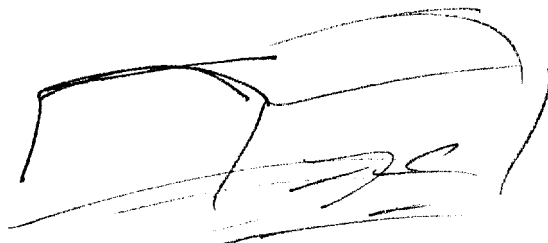
HEAVY

VITAL

Room



CHAMBER



Vault



S2

13  
A/S

TOWERING  
TIERED SK

TRUNCATED

TOWERING

TESTING  
SURFIC  
COLONATED  
QUASI-

CHAMBER  
SMOOTH FLOOR



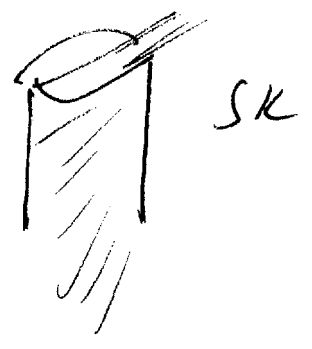
SK  
AOL BREAK  
DESPERADO.

LARGE  
ENCLOSED

ENCIRCLED  
BUILT FOR PURPOSE  
SOLE PURPOSE

TEN

TOWER



At Bush  
feel very absorbed.  
hungry, beat slow  
morning

S2

14  
A/S

BRIGHT COLOR  
LARGE  
LONG  
SEPARATED

SEPARATED  
USEFUL  
REGIMENTED FEELING

PASSAGE  
PASSAGE  
DESIGNED

LIKE  
UNIFORM

WIDE  
HIGH  
ENCLOSED

STRONG

TIME

TIME

TIME

COILED

SOLIDIFYING

AI BREAK  
Very impressed  
physically +  
by WHAT THIS  
STANDS FOR.

S2 D AI EI T I AOL AK

BRIGHTER  
LARGE

CROWDED

People

ACTIVITY

EXCITEMENT  
CURIOSITY  
CONTRIVING

WARM

GANDID

CHARGING

SOMBER  
SHIFTING

SHIFTING

DELINQUENTING

CORSBAH

AI BREAK  
FEEL VERY HEAVY.

DANIAL

MOTION.  
MEANING  
CONTRIVING

TASSLE

AGREEMENT

Like  
GREETING

THUNDER

PLEDGING

MEN

SERIOUS  
SOMBER

BUSINESS LIKE

AOL BREAK

Feels like before  
a storm

TERRORISM

STAGE VI

S2

D

AI

EI

T

I

AGL

4/5

CABAL

STRENGTH FIRM

COLUMN

DEDICATION  
NOT SMILING

PAPER



DOCUMENTS

PLANS

PREDICTIONS

CHANDERTINE

LOYAL OPPORTUNIST

DISSEMBLE

FROM CENTER OF STRUCTURE  
SOMETHING SHOULD BE  
VISIBLE.

DOUBLE

IRON  
STEEL

BULKY

STRONG  
DEBILITIZING  
ARTIFICIAL

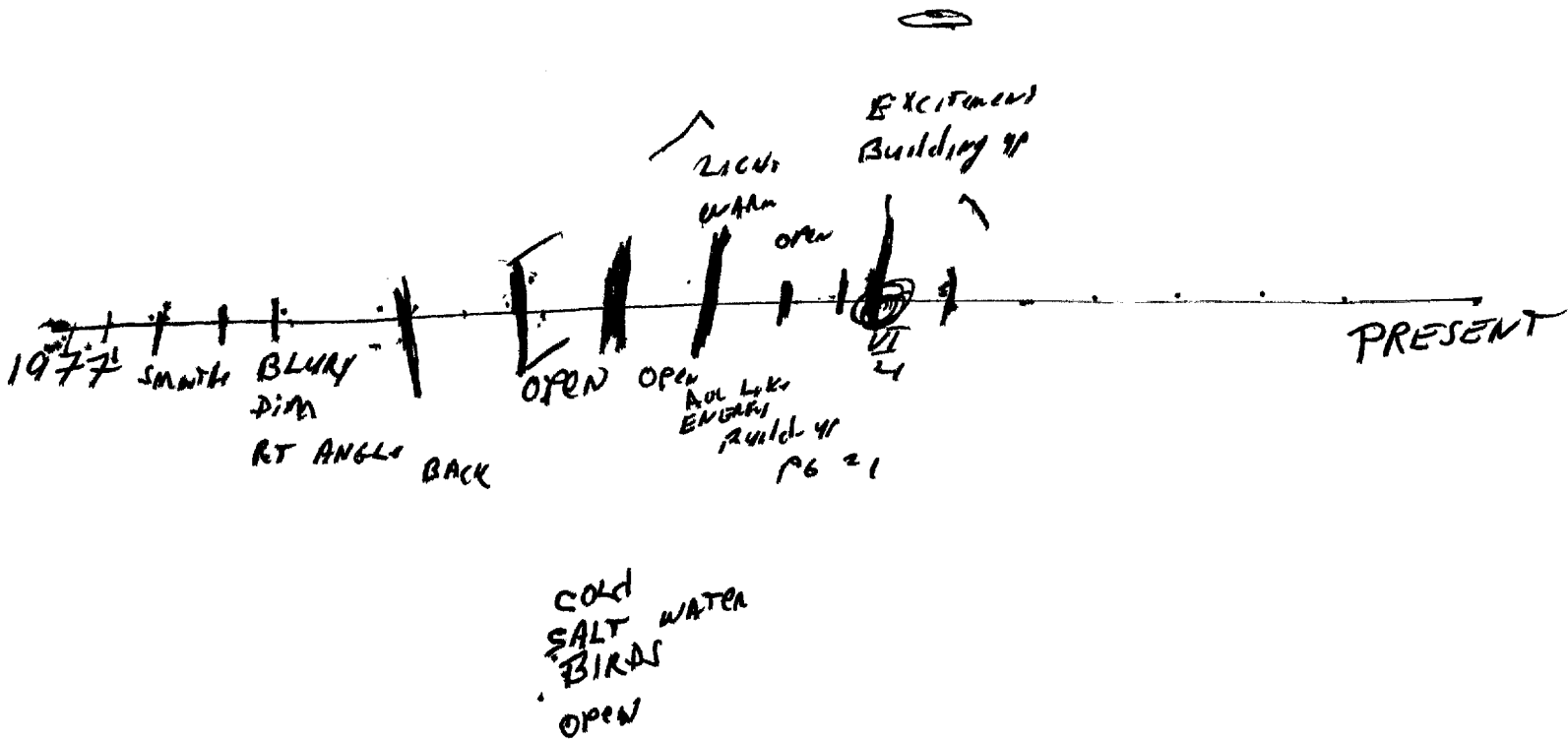
NO BREAD  
ARMOR

SMALL

SECRET  
CURSE  
FUNCTION

BUILT FOR  
DIWAD ENAL





ACTIVITIES  
OBJECTS  
EMANATIONS ?

AdL Brub  
Shuffling

1

ACTIVITIES  
OBJECTS  
EMANATIONS ?

ROOM  
BOTTLE  
MEETING  
CONGRATULATION

ACTIVITIES  
ATTRIBUTES  
EMANATIONS ?

MOTION  
PRESSURE  
ADRENALIN  
FEAR  
STRESS  
SHUFFLING  
COMBINING  
PLANNING  
IMPLEMENTING

ACTIVITIES  
ATTRIBUTES  
EMANATIONS

HURRY  
DISCUSSION

ACTIVITIES  
SUBJECTS  
EMANATIONS?

PI

AOL Bunk  
PRESSURE

ACTIVITIES  
SUBJECTS  
EMANATIONS?

EXPANDING.

ACTIVITIES  
TOPICS  
EMANATIONS?

LIFE  
HUNGER  
EXPANSE  
SUBJECTS  
DYNAMICS  
LAYERS

STAGE VI

19

52

D AI ET T I AOL

AIS

FORWARD LOOKING  
CONGLAMERATE  
CONGEALING

CRISIS

COHD  
BRILLIANT

DEVELOPING

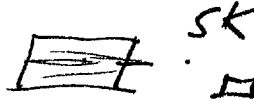
AI BREAK  
REPUKSED

AMORAL

FOCUS

LONG

TWO OBJECTS



PLATITUDES  
CONVULSING CONSULTING

MECHANICAL  
IN A WAY

CROSS OVER

BANK

AOL BREAK  
RANGING

INTERCONNECTED  
CONTROLLED

KABIT

FOCUS OF ATTENTION

AI BREAK  
CHAIN

STAGE VI

S2

AI

EI

T

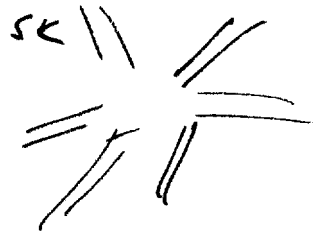
I

AOL

A/S

TOUGH  
PROTECTED  
FUNCTIONAL  
FUNCTIONING

LIKE RAYS



WARN

SIMULATED  
CUSHIONED  
SEVERE

SEVERE

SMOOTHER  
CLEARER

LOCKED IN  
SITUATED  
IN COMBINATION  
SYMPATHATIC ?

Added TO

ENLARGED  
SERIES

SERIES

STAGE VI

21

S2

D AI EI T I AOL

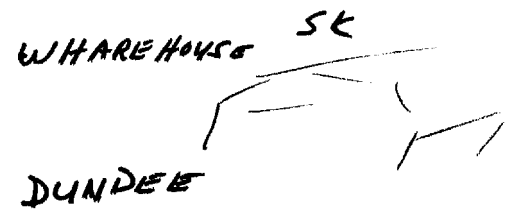
A/S

RESAVOIR

LINKed 4P

clank

ALONE  
FEELING



BLACK  
COOL

AS BREAK  
feel like I am in  
a black hole

ENERGY

BOUNCING  
Building

AGOG

AOL BREAK  
LAP —

AS BREAK  
excited.

CORSEING

CORSING

Feedback  
STATIC  
LIGHT  
SURGE.

L1  
CARMEL COLOR  
BURNING wire smell  
SMOOTH  
CRACKLE  
WHITE  
GRAY  
GUN METAL

STAGE VI

S2 D AI EI T I AOL A/S

SHA-BOOM

HORIZONTAL  
BOXES  
LONG LINE

COVERED  
PURVAYOR (?)  
TWO OBJECTS  
STYLED  
STRATIFIED

FROM SOFT  
SOMETHING IS  
VISIBLE?

BLUE  
WHITE

LOCKED

NOL BRUSH  
DOCK

Boiler  
WALL

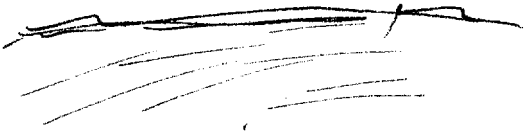
DIRGE

BROKEN

COOL

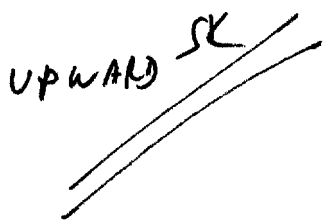
GROUND  
EARTH

SK



DIM

FADING



CHANNELED

CARMEL  
OBJECTS  
EMANATIONS ?

BOY

CARMEL COLOR  
OBJECTS  
EMANATIONS ?

LOCK

CARMEL COLOR  
ATTRIBUTES  
EMANATIONS ?

HUE  
SHADE  
SMOOTH.

CARMEL COLOR  
SUBJECTS  
EMANATIONS ?

DIQUADRAL

CARMEL COLOR  
SUBJECTS  
EMANATIONS ?

DI—



CANAL BOAR

TOPICS  
EMANATIONS?

- BIFURCATED
- BUILT
- DISCOVERED
- DANGEROUS
- FAR FETCHED
- LINKED

DIQUADINAL  
OBJECTS  
EMANATIONS ?

LINKED  
TANDEM  
SYMBIOTIC

DIQUADINAL  
ATTRIBUTES  
EMANATIONS ?

COLOR  
FREQUENCY  
CROSS OVER

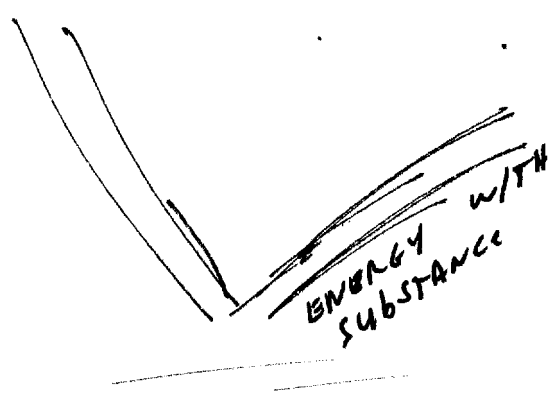
DIQUADINAL  
SUBJECTS  
EMANATIONS ?

SURFACING.

(X) EASTER EGGS  
IN SPACE

DIQUADINAL  
TOPICS  
EMANATIONS ?

SOOTHING  
CALAMITY  
COLUSSUS  
CRUY

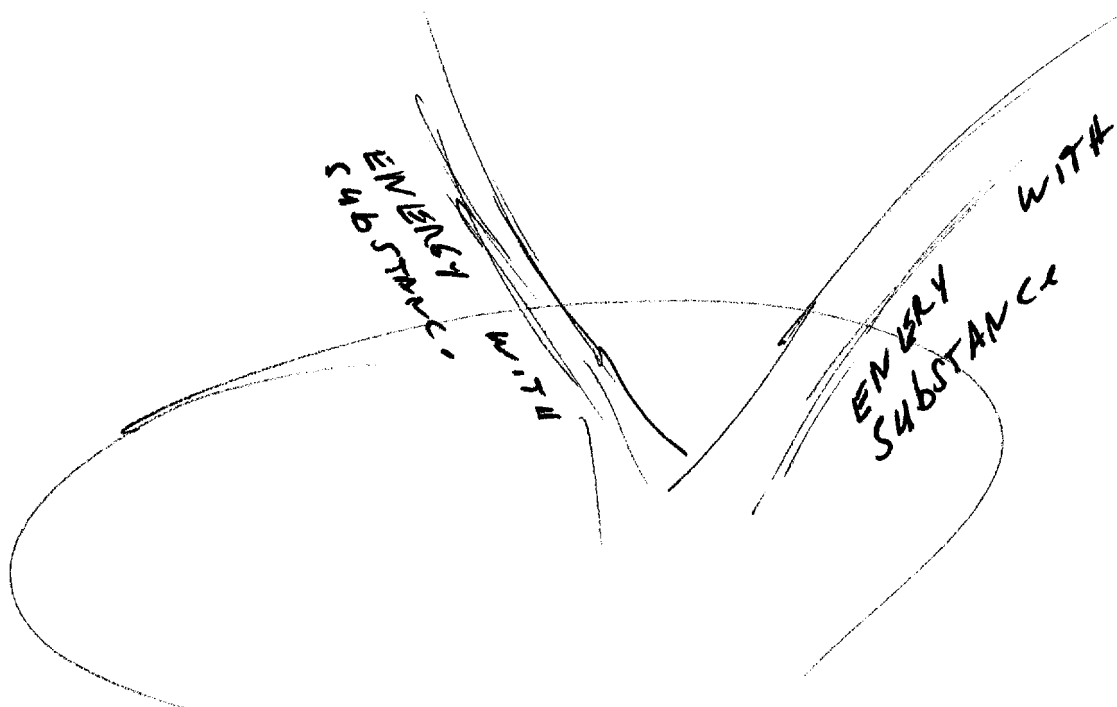
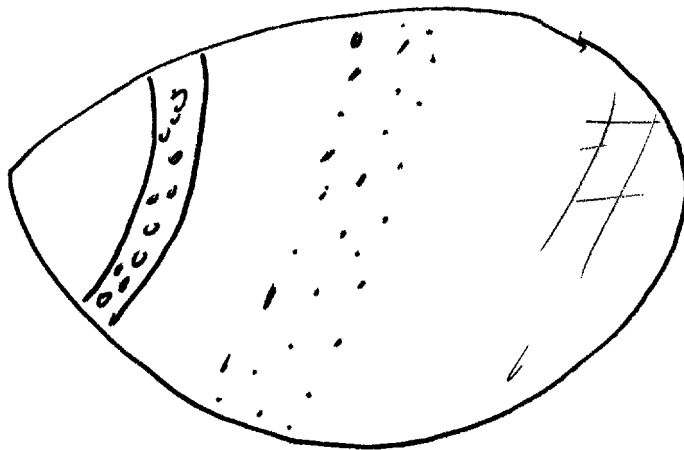


EASTER EGGS  
IN SPACE  
PRIOR EMANATIONS,  
COLORS  
Red / white  
Blue  
SPHERICAL  
THIN  
HANGING  
SHIFTING  
SPECKLED  
AMORPHOUS

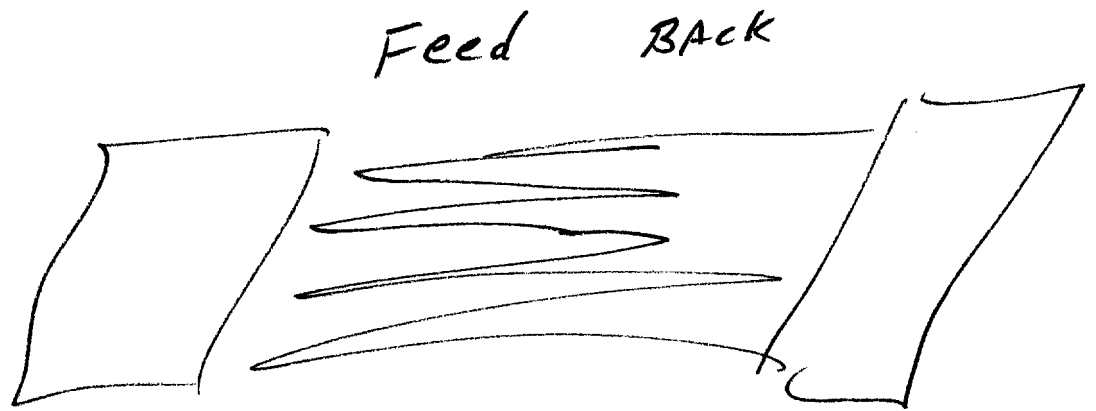
AOL

S.L.

EASTER EGG  
IN SPACE



11:46



SUMMARY: INSIDE of ~~Large~~ Building 28

IS A LARGE, wide, HIGH ceiling, open feeling Room. Room EITHER HAS A VAULT OR CHAMBER OR IS A VAULT AND CHAMBER. People IN THIS Room ARE brilliant, SERIOUS, CURIOUS, SOMBER, CANDID AND BUSINESS LIKE. There IS A FEELING OF TESTING IN THIS ROOM. People IN ROOM ARE REGIMENTED AND IT IS ALMOST LIKE THEY ARE IN UNIFORM.

What goes on in this room is clandestine and SECRET.

In 1977 There were two objects in the center of the room. Objects are developing and are forward looking. People here are amoral, cold and brilliant. I feel repulsed. Objects have to do with congealing and focus. They are also convulsive (NFI) and are mechanical in some strange way. Objects are like a bank and there is some form of crossover. Objects are controlled and interconnected. Objects are tough, protected, functional, functioning and cushioned. They are syncretized and

Approved For Release 2000/08/08 : CIA-RDP96-00789R000100130008-9

have something to do with something <sup>29</sup>  
like rays (mfi). They are locked in in  
combination and are sympathetic. Objects  
are a reservoir. Energy is present it is  
bouncing and building. There is feedback,  
static, light and a surge. There is  
a caramel color which has something to  
do with bifurcated, linked, dangerous and  
far fetched. There is also a strange  
burning smell and crackle. Other colors  
associated are white, gray and gun metal.  
Something (NFI) is channelled. Two objects  
seem to feedback off each other (NFI).  
AT Times in the past they have  
been put side by side and at other  
times they are placed at right  
angles to each other. Sometime, probably  
in 1978, objects were moved from  
this large open building to an open  
place, with water, salt air and birds

Approved For Release 2000/08/08 : CIA-RDP96-00789R000100130008-9

Later objects were moved to a  
warehouse. I have the feeling that  
in 1978, excitement or energy was  
built up. There is a feeling of  
energy with substance (NFI) being projected  
upward toward something that reminds  
me of colored easter eggs floating  
in space.

The word diagonal (or a similar  
word) has something to do with two  
objects at the site. It also has  
something to do with linked, tandem  
and symbiotic as well as color, frequency  
and cross-over.



The following words, are either not words or do not ~~seem~~ seem to make sense.

KABIT

DUNDEE

PURVAYON

CORS BAH

DANIAL

CABAL