

COORDINATE REMOTE VIEWING TRAINING (CRVT)

CRVT Report: 979

DATE/TIME CONDUCTED 041105Jan83

SOURCE #: 63

FILE #: 14

SITE: Suez Canal, Egypt

EVALUATION: Good S1 and S2 decoding
 No canal Signal line.

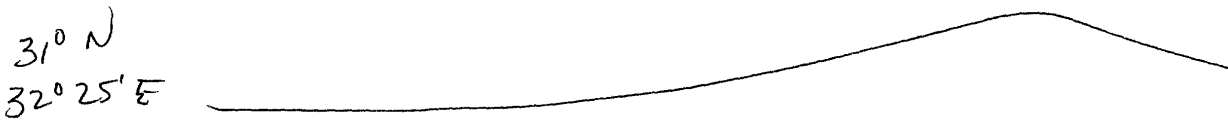
TDM
4 Jan 83
1105

31° N
32° 25' E — Break



A - gently rising / up / falling
B hill PC

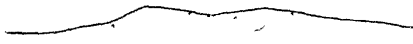
31° N
32° 25' E — Break



A small rising
B hill

S-Z
Flat area c
smooth c
open c
large open flat
area c

- All cold -
light colored c
Patchy c/s
barren c

31° N
32° 25' E 

A Rippled
B 

S-Z
light brown c
irregular c/s
grainy PC
Warm PC
Smaller c/s

Sandy flat
area c

Sum

Sandy flat area
light brown
Warm
barren
smooth
open

desert

bed

31° N

32° 25' E

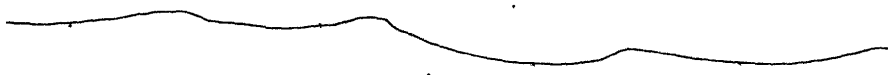


A-m break

S-2

31° N

32° 25' E



A gently rolling

B hills N3

S-2 wind blank CBS

dry C

large open flat area

solid hard

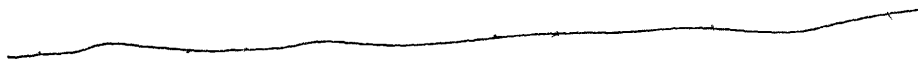
Hot Pro

ten break

dence low soil CBS

like clay
not bricks

31° N
32° 25' E



A rolling rising

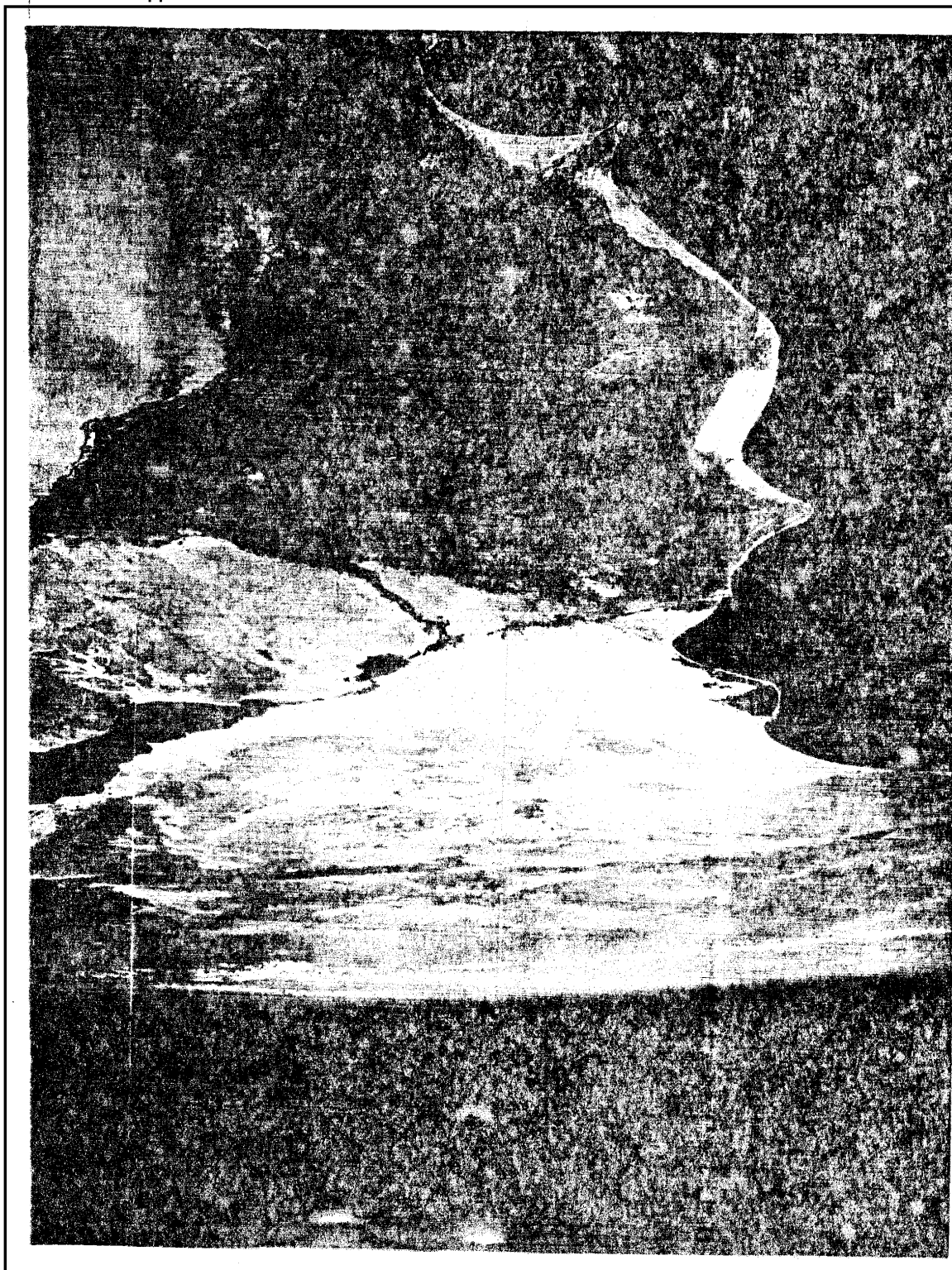
B land

S-Z flat rolling

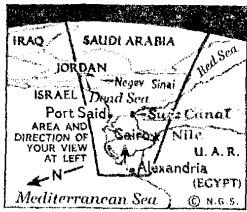
irregular

brown stone walls

End



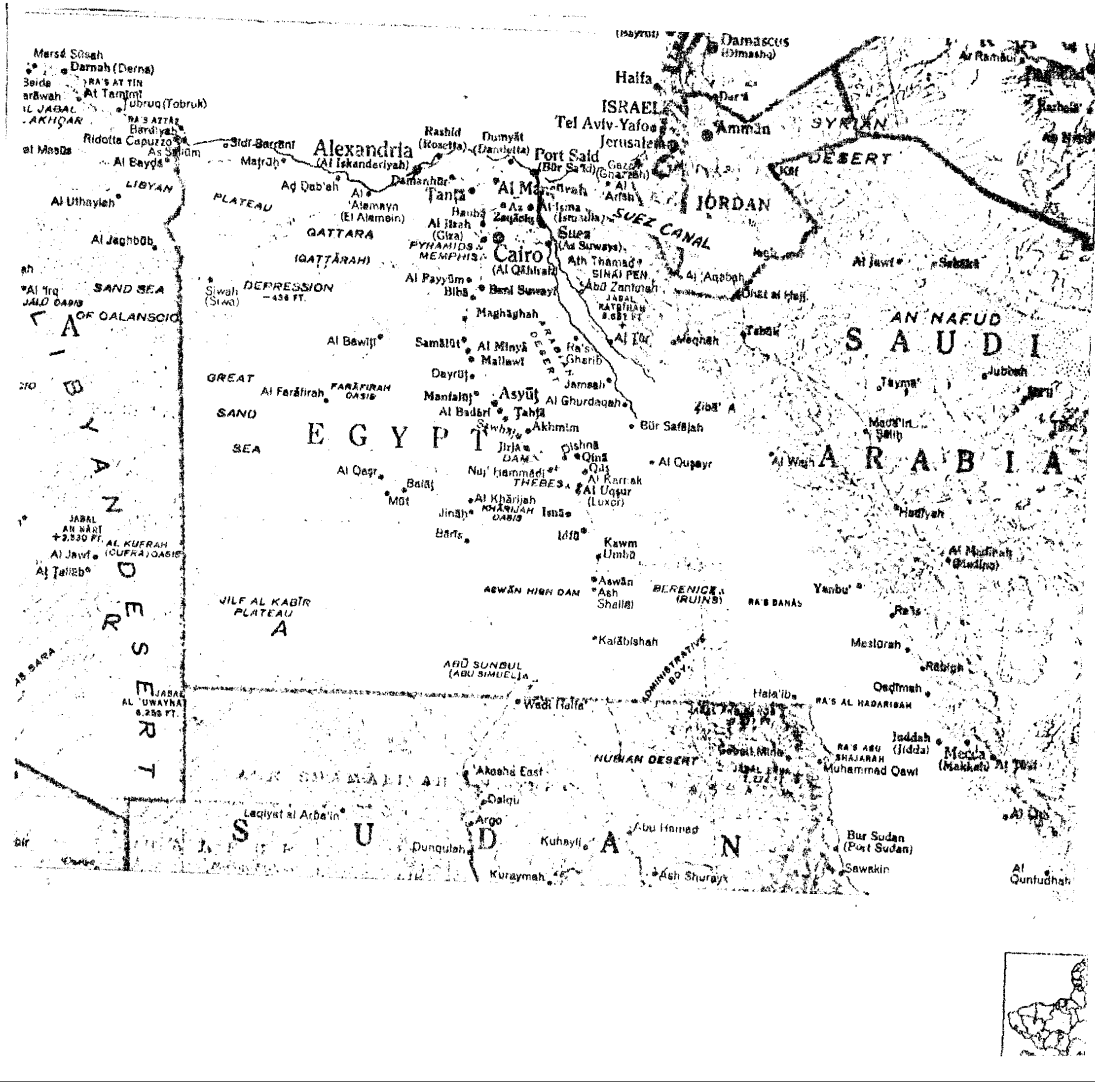
CPYRGHT



BIBLE LANDS

Early heartland of civilization bares its anatomy to Astronauts James A. McDivitt and Edward H. White as they fly 115 miles above in Gemini 4. In Egypt's funnel-shaped delta—fleetingly taken by McDivitt for a giant lava flow—crowd 27,500,000 people, nourished by the splayed veins of the River Nile. Neither pilot could spot the Pyramids (left), near Cairo in the funnel's throat. Beyond Suez, the Sinai desert shows pale as bleached bone, while across the Israeli border in the Negev, left center, gardens bloom from the sands. In this 1,000-mile view, water—precious as blood—divides sere from sown. Such portraits from space give scientists a fresh look at world geography.

LARGE EKTACHROME BY NASA.
EKTACHROME BY JAMES L. STANFIELD © N.G.S.



CPYRIGHT