

COORDINATE REMOTE VIEWING TRAINING (CRVT)

CRVT Report: 970

DATE/TIME CONDUCTED: 061050 Dec 82

SOURCE #: 63

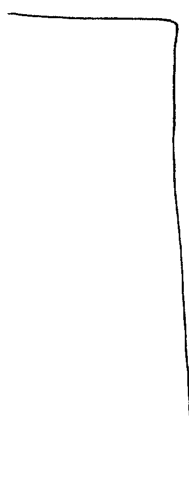
FILE #: 14

SITE: Lower Falls, Yosemite, CA

EVALUATION: Very good

TDM
6 Dec 82
1050

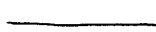
37° 45' 4" N
119° 35' 44" W



A Dropping

B —

37° 45' 4" N
119° 35' 44" W

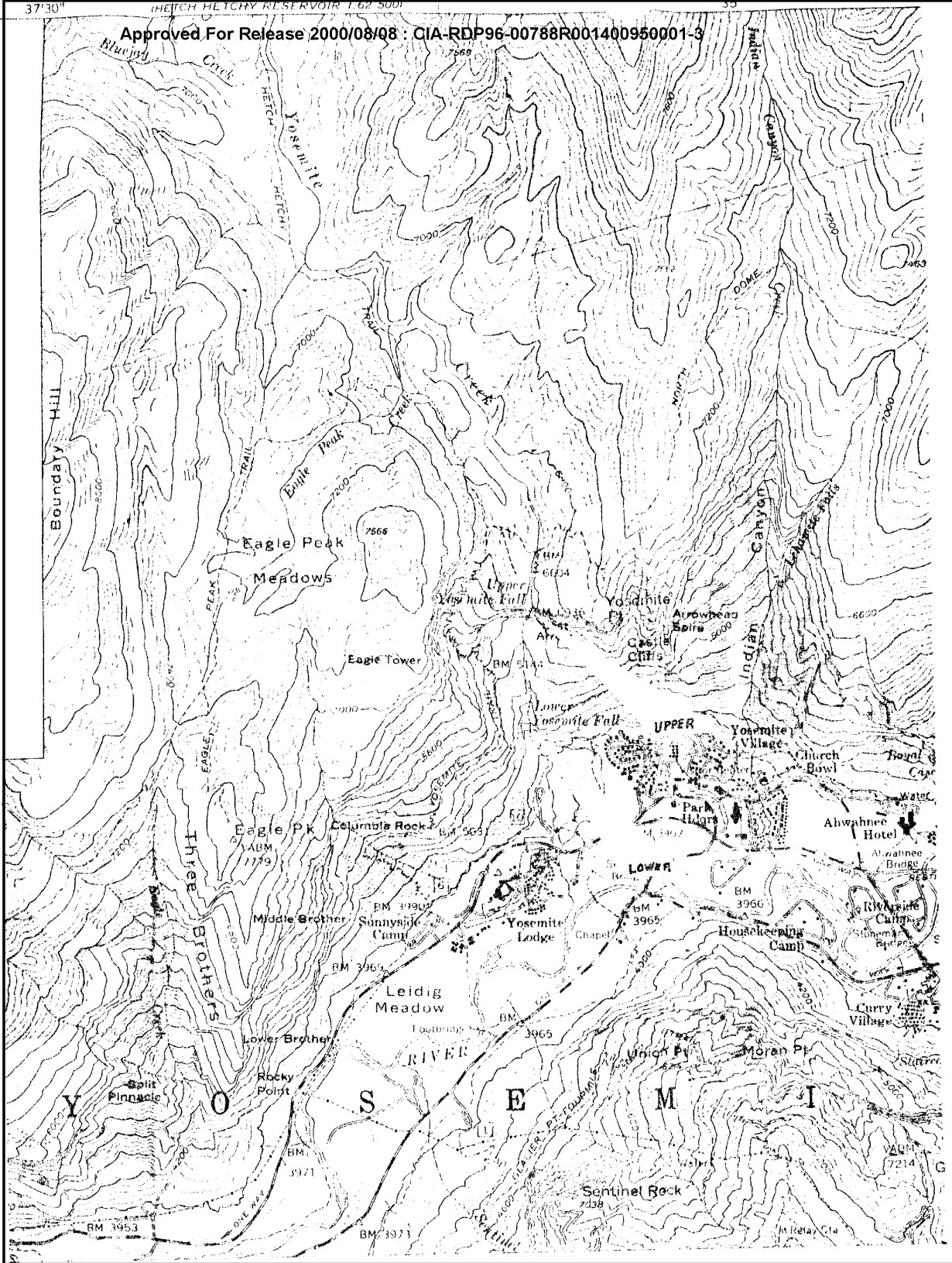


AOL BREAR

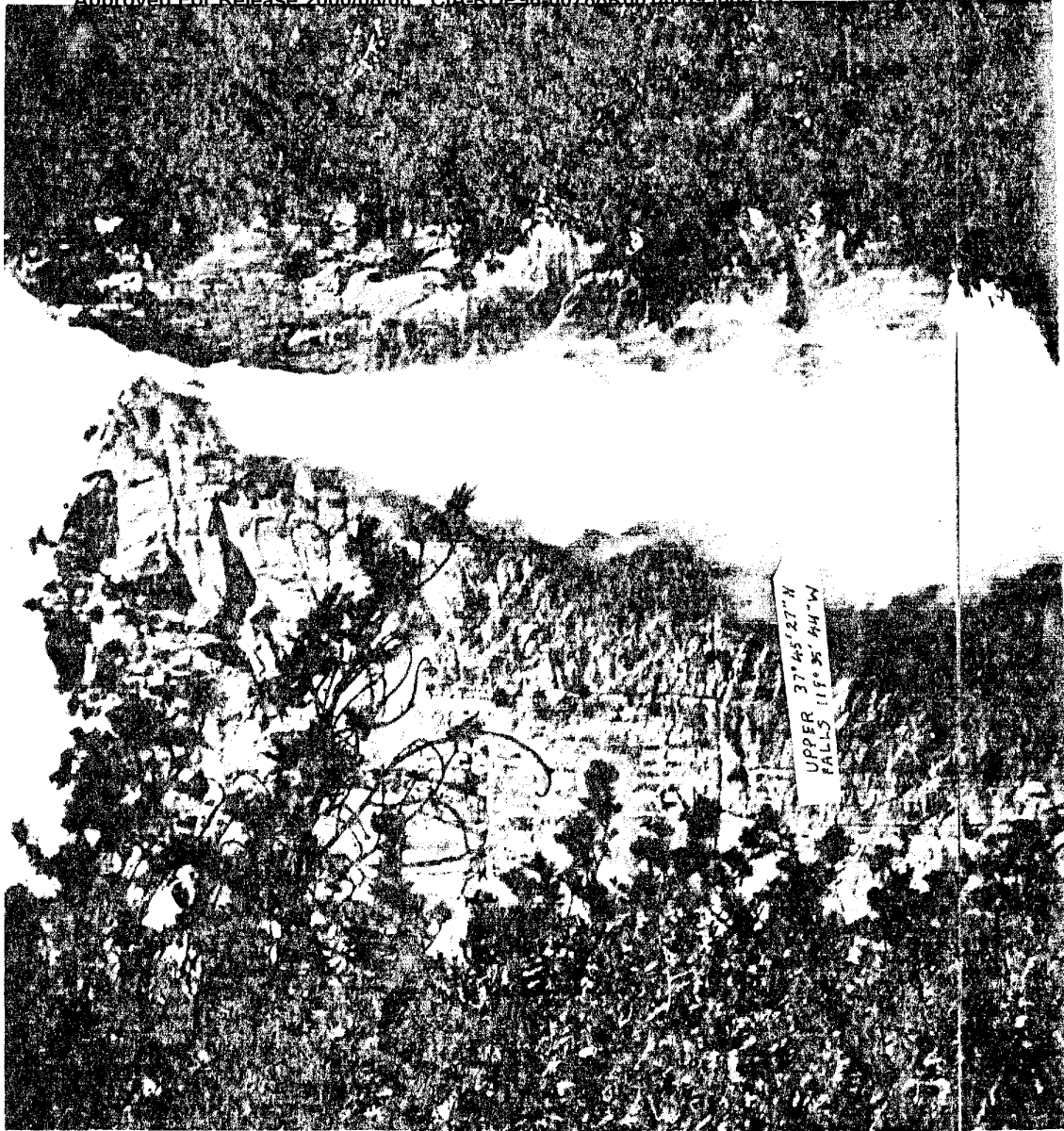
YOSEMITE

END

Approved For Release 2000/08/08 : CIA-RDP96-00788R001400950001-3



CPYRIGHT



Yosemite

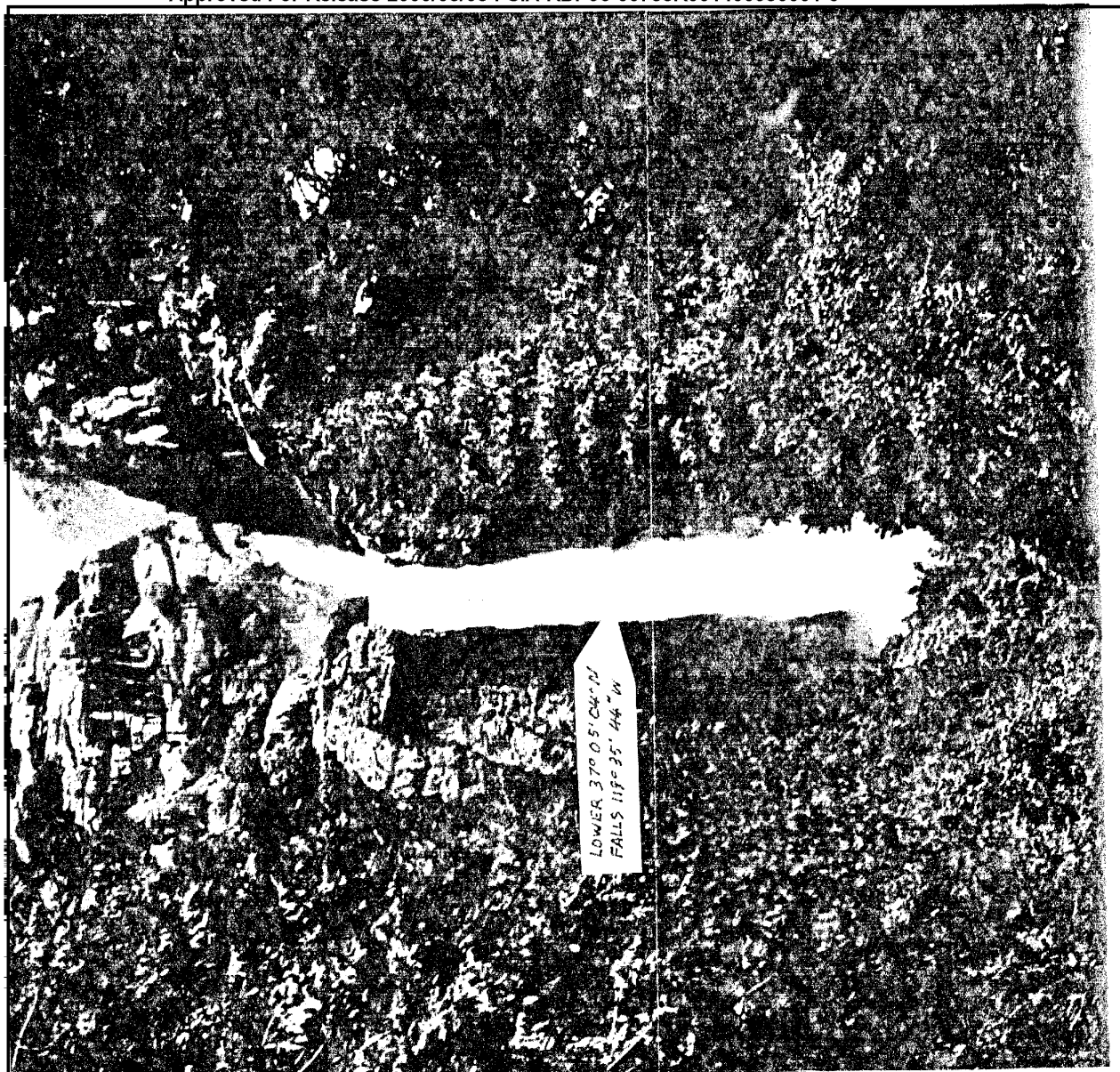
CHURNED TO FROTH in its wild leap, Yosemite Falls plunges with such force that the ground trembles at its base. Upper Fall, Middle Cascade, and Lower Fall plummet a combined 3,425 feet—North America's loftiest cataract.

Swollen by spring melt, the falls fills Yosemite Valley with its thunderous roar. In early summer the waning waters whip in the wind like a gossamer veil. By mid-August only a tear trickles down the canyon face.

Pressed between sheer rock walls half a mile high, Yosemite Valley follows a seven-mile gorge carved by glaciers and the Merced River. From hanging valleys high above the river spill many other spectacular falls, including Bridalveil, Vernal, Illilouette, Nevada, and Ribbon, which drops 1,612 feet, longest single fall on the continent.

Yosemite became a national park in 1890, a few days after nearby Sequoia attained park status.

CPYRGHT



Yosemite firefall rains a river of embers down the face of Glacier Point. Each summer evening a bonfire of bark from fallen trees blazes atop the cliff. Dying it leaves a huge bed of glowing embers. At twilight deepens into night, an expectant hush prevails over canyon.



sounds in the darkness.
"Get the fire fall!" and
men with long-handled
rakes push the coals over
the brink. As if in slow
motion, the fiery torrent
drifts toward the canyon
floor, consuming itself as
it falls.

THE NEW YORK TIMES
MAY 15, 1964
BY JAMES BEARD

CPYRGHT