

COORDINATE REMOTE VIEWING TRAINING (CRVT)

CRVT Report: 944

DATE/TIME CONDUCTED: 221533 Oct82

SOURCE #: 25

FILE #: 12

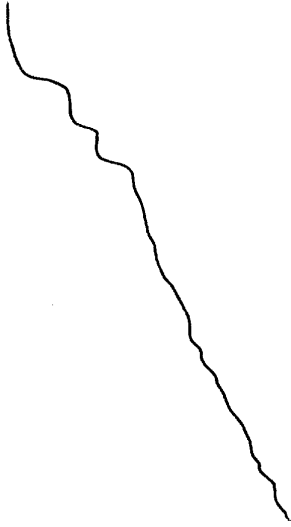
SITE: Mystic Seaport Connecticut

EVALUATION: No valid S1
 No valid S2
 No site signal

ROB
22 Oct 82
15:33

41° 21' 30" N

71



A. DOWN/WAVY
B. —

41° 21'

S-2 steep.

structure


ROB
22 Oct 82
1535

41° 21' 30" N

71° 58' W 

- A. WAVY
- B. WATER
- C. C

41° 21' 30" N

71° 58' W 

- A. SOLID
- B. LAND

A. WATER

- AOL BREAK
- BETH SCIENCES
- LAND WATER
- INTERFACE C

ROB
22 Oct 82

41° 21' 30" N

71° 58' W

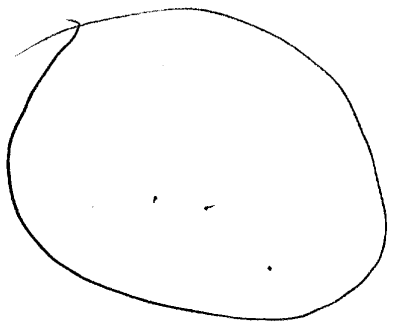


(M)

CONF BREAK
STRUCTURE
PROBLEM.

41° 21' 30" N

71° 58' W



A. WATER

S-2 SALT

HOT
SUNLIGHT

A. SOLID

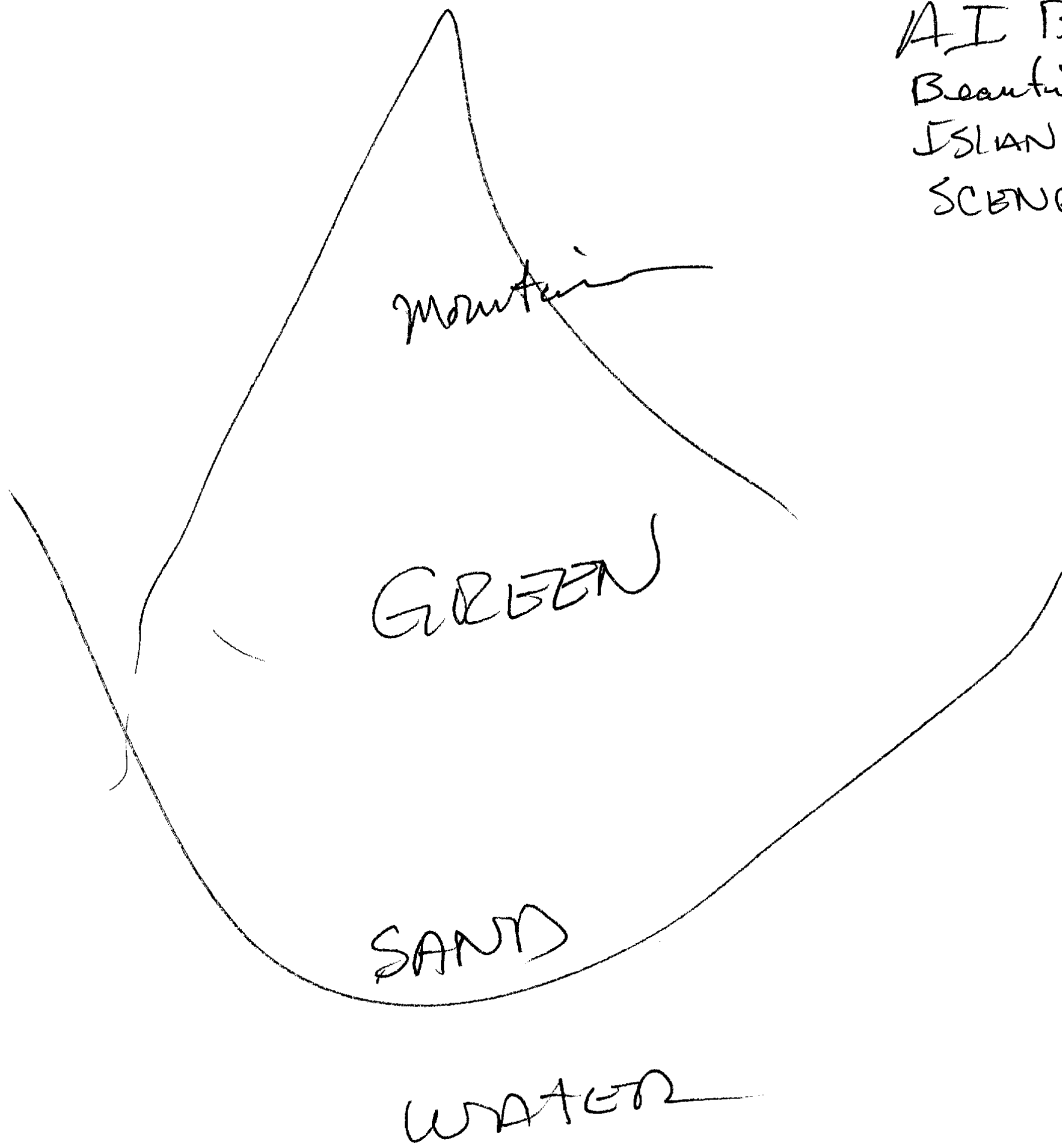
B. SAND

S-2 GREEN C

(N)

OVERGROWN
AOL BREAK ISLANDS

AI BREAK
Beautiful
ISLAND
SCENE



ROV3

22 Oct 82

Resume 15:45

u

41° 21' 30" N

71° 58" W



A.

CONF BREAK

WONDER

Because of failure
to properly interpret

41° 21' 30" N

71° 58' W



A. FIAT

B. LAND

A. FLAT

B. LAND

A. WATER

B. —

AOL BREAK SCENES
OF RIVER.

41° 21' 30" N

71° 58'



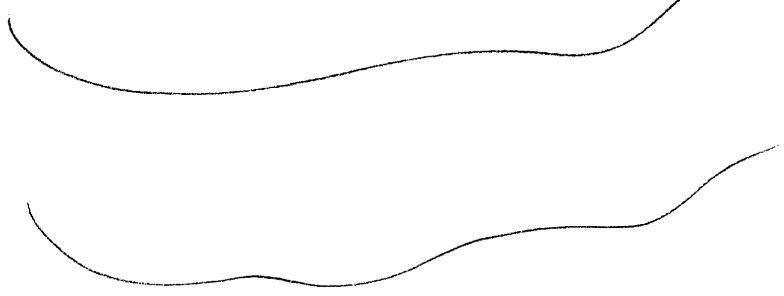
A. Down
ACROSS
UP.

B. V.

AOL
THIS LOOKS
LIKE A
VALLEY.



GREEN RIVER
VALLEY
AOL BREAK

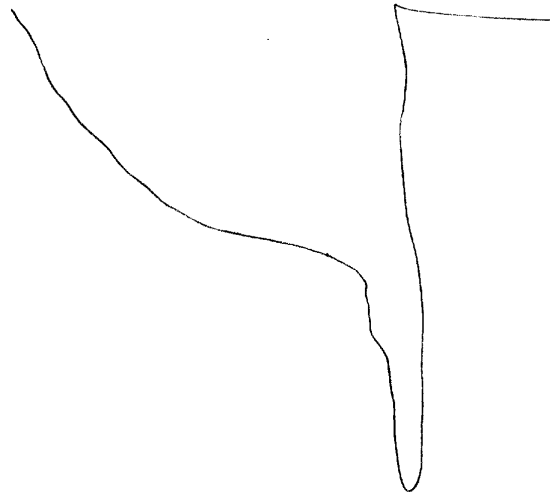


ROB

22 Oct 82

41° 21' 30" N

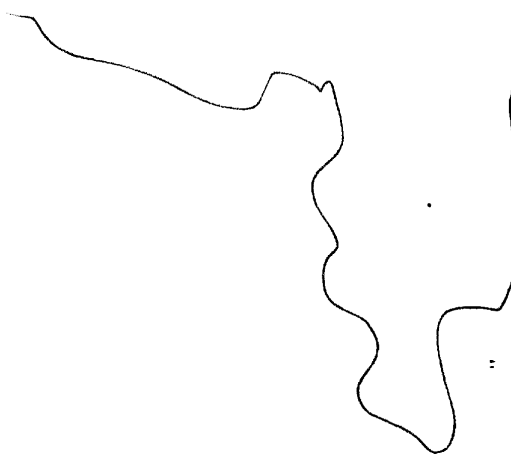
71° 58' W



A.
TM
BREAK

41° 21' 30" N

71° 58' W



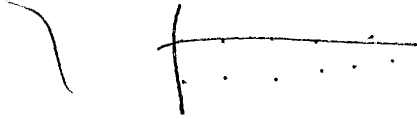
A. LAND
B. —
A. WATER
B. —

AOL BREAK
SCENES OF Florida
FROM AIR
BREAK.

ROB
22 OCT 82

41° 21" 30N

71° 58"



A. ANGULAR
B. Structures

AOL BREAK
SCENES OF
Small town
Residential
STREETS.

END.

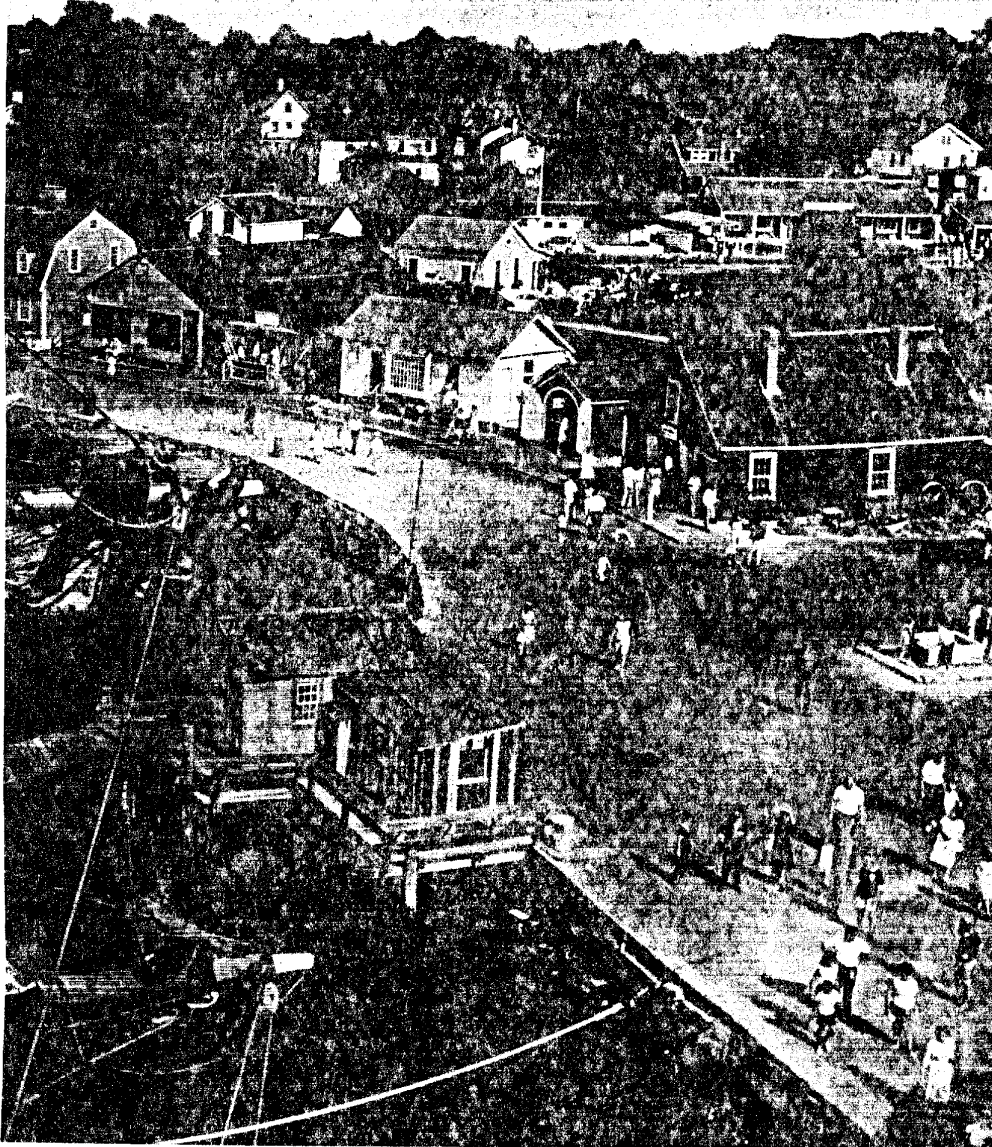
Sail Lives On at Mystic

By ALAN VILLIERS

Photographs by WESTON KEMP

Aloft in the square-rigger *Joseph Conrad*, youngsters relive the rugged days of old.

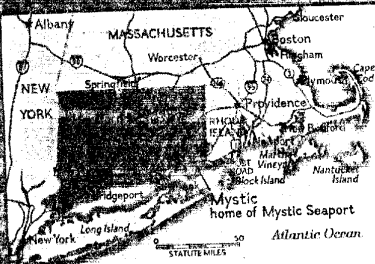
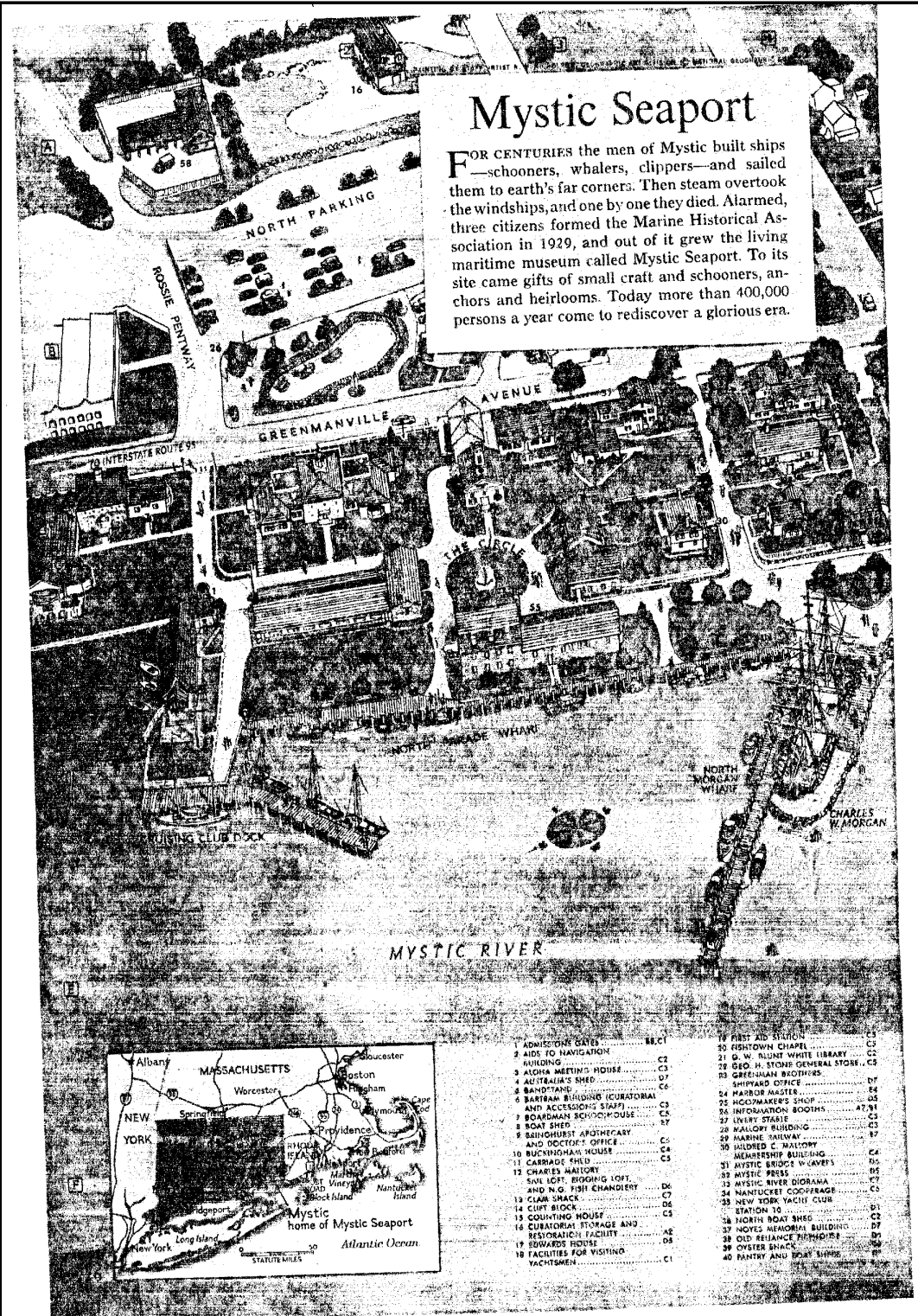
KODACHROME © NATIONAL GEOGRAPHIC SOCIETY 221



CPYRGHT

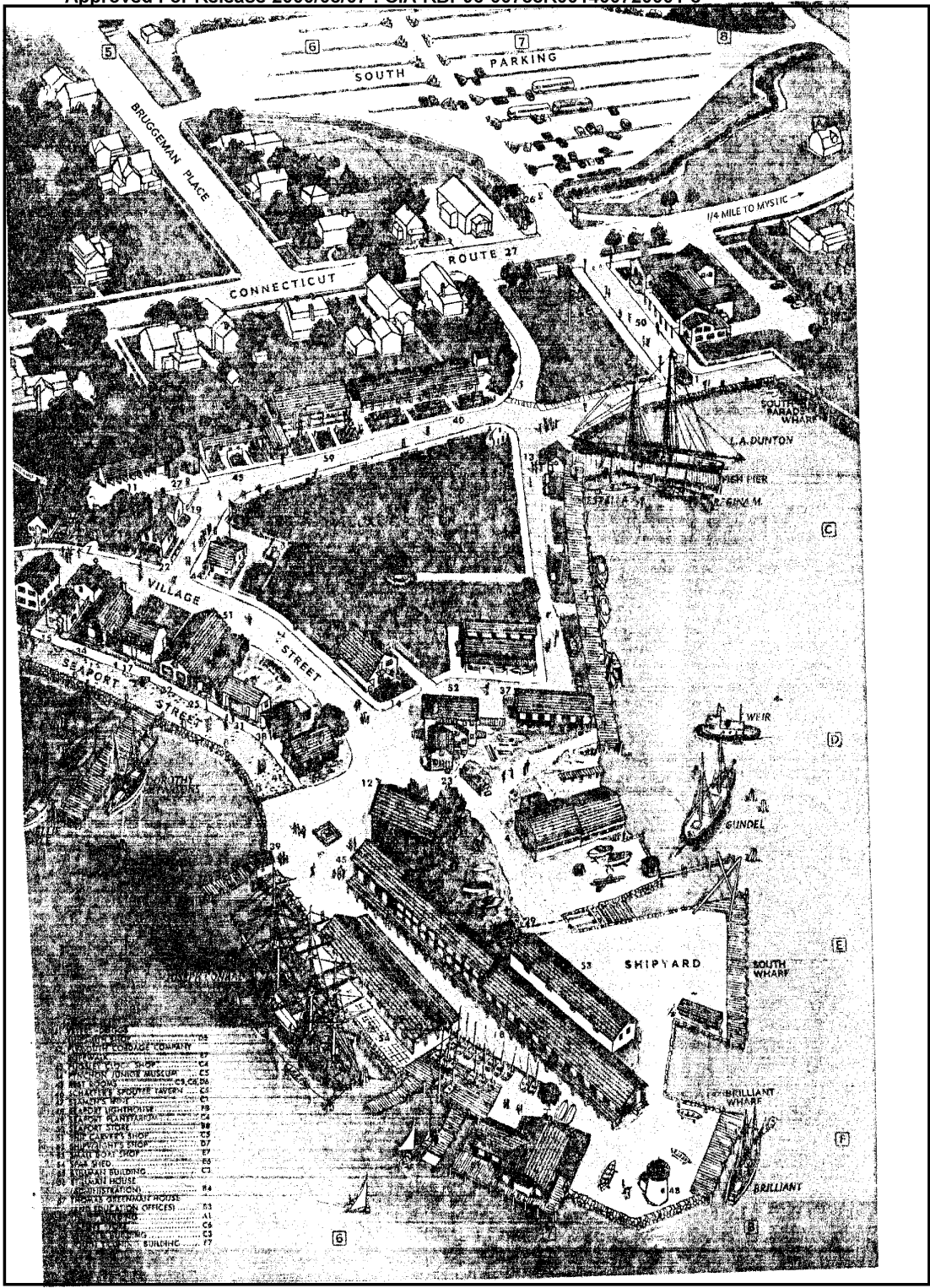
Mystic Seaport

FOR CENTURIES the men of Mystic built ships—schooners, whalers, clippers—and sailed them to earth's far corners. Then steam overtook the windships, and one by one they died. Alarmed, three citizens formed the Marine Historical Association in 1929, and out of it grew the living maritime museum called Mystic Seaport. To its site came gifts of small craft and schooners, anchors and heirlooms. Today more than 400,000 persons a year come to rediscover a glorious era.

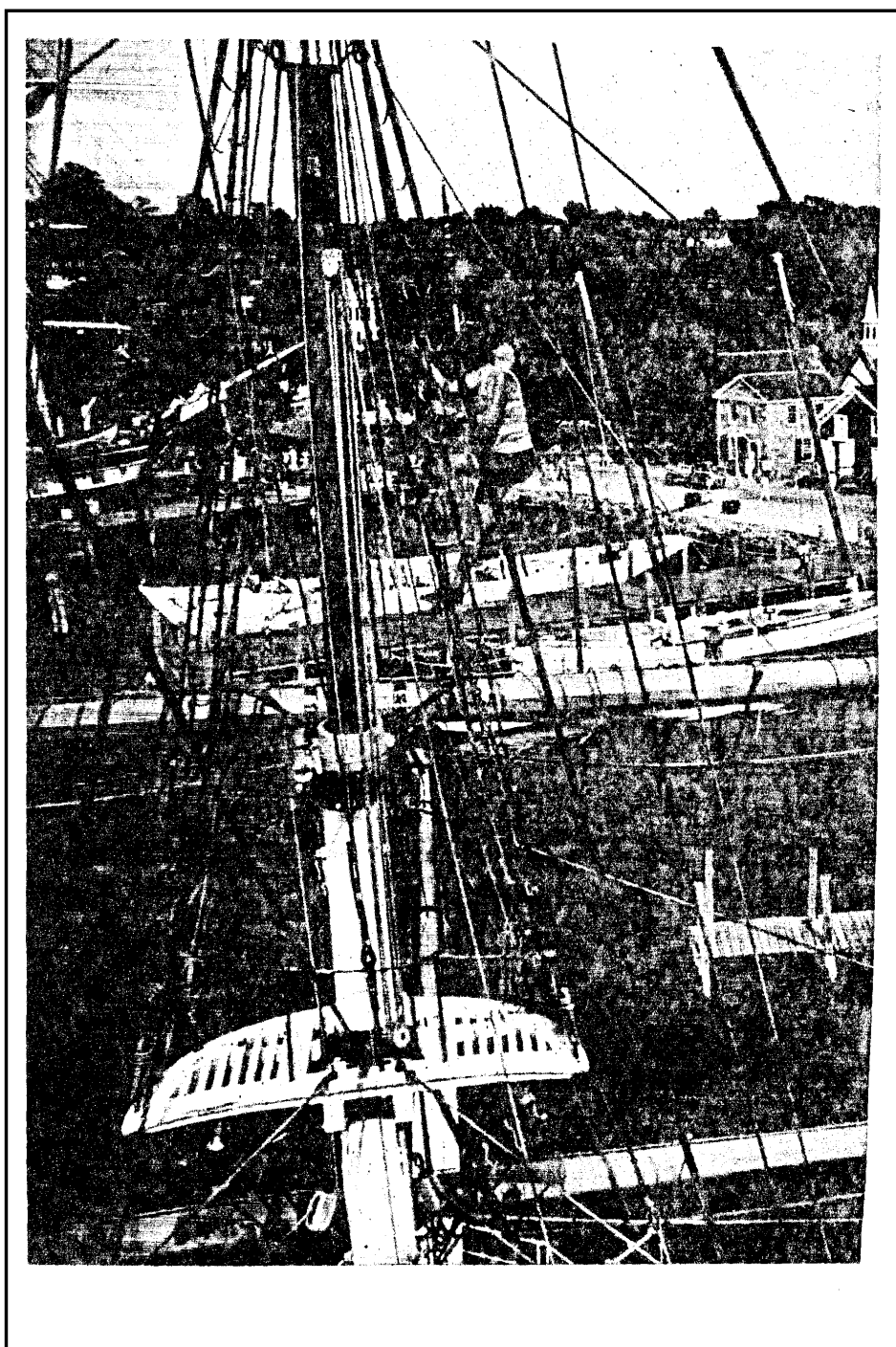


- | | | | | | |
|----|--|-------|----|---------------------------------------|-------|
| 1 | ADMISSION GATES | BB,C1 | 19 | FIRST AID STATION | CC |
| 2 | AIDS TO NAVIGATION BUILDING | C2 | 20 | FISHTOWN CHAPEL | CC |
| 3 | ALPHA MEETING HOUSE | C3 | 21 | G. W. BLUNT WHITE LIBRARY | CC |
| 4 | AUSTRALIA'S SHED | D7 | 22 | GEO. H. STONE GENERAL STORE | C3 |
| 5 | BANDSTAND | C6 | 23 | GREENMAN BOOTHS | D7 |
| 6 | BARTRAM BUILDING (CURATORIAL AND ACCESSIONS STAFF) | C3 | 24 | HARBOR MASTER | CC |
| 7 | BOARDMAN BOYHOOD HOUSE | C5 | 25 | HOCKEYMAKER'S SHOP | CC |
| 8 | BOAT SHED | E7 | 26 | INFORMATION BOOTHS | A7,B1 |
| 9 | BRIGHURST APOTHECARY AND DOCTOR'S OFFICE | C6 | 27 | EVERY STABLE | C3 |
| 10 | BUCKINGHAM HOUSE | C4 | 28 | KALLOP BUILDING | C3 |
| 11 | CARRIAGE SHED | C3 | 29 | MARINE RAILWAY | E7 |
| 12 | CHARLES MANNING SAIL LOFT, RIGGING LOFT, AND N.G. FISH CHANDLERY | D6 | 30 | MALDRED C. WATSON MEMBERSHIP BUILDING | C4 |
| 13 | CLUB SNACK | D6 | 31 | MYSTIC BRIDGE W. CAVE'S | D5 |
| 14 | CUPT BLOCK | C5 | 32 | MYSTIC PRESS | D6 |
| 15 | COUNTING HOUSE | C5 | 33 | MYSTIC RIVER DIORAMA | E7 |
| 16 | CURATORIAL STORAGE AND RESTORATION FACILITY | AE | 34 | NANTUCKET COOPFRAGE | C5 |
| 17 | EDWARDS HOUSE | D8 | 35 | NEW YORK YACHT CLUB STATION 10 | D1 |
| 18 | FACILITIES FOR VISITING YACHTSMEN | C1 | 36 | NORTH BOAT SHED | C2 |
| | | | 37 | NOTES MEMORIAL BUILDING | D7 |
| | | | 38 | OLD RELIANCE KITCHEN | D1 |
| | | | 39 | OYSTER SNACK | CC |
| | | | 40 | PANTRY AND ICE SHED | E7 |

CPYRIGHT



CPYRGHT



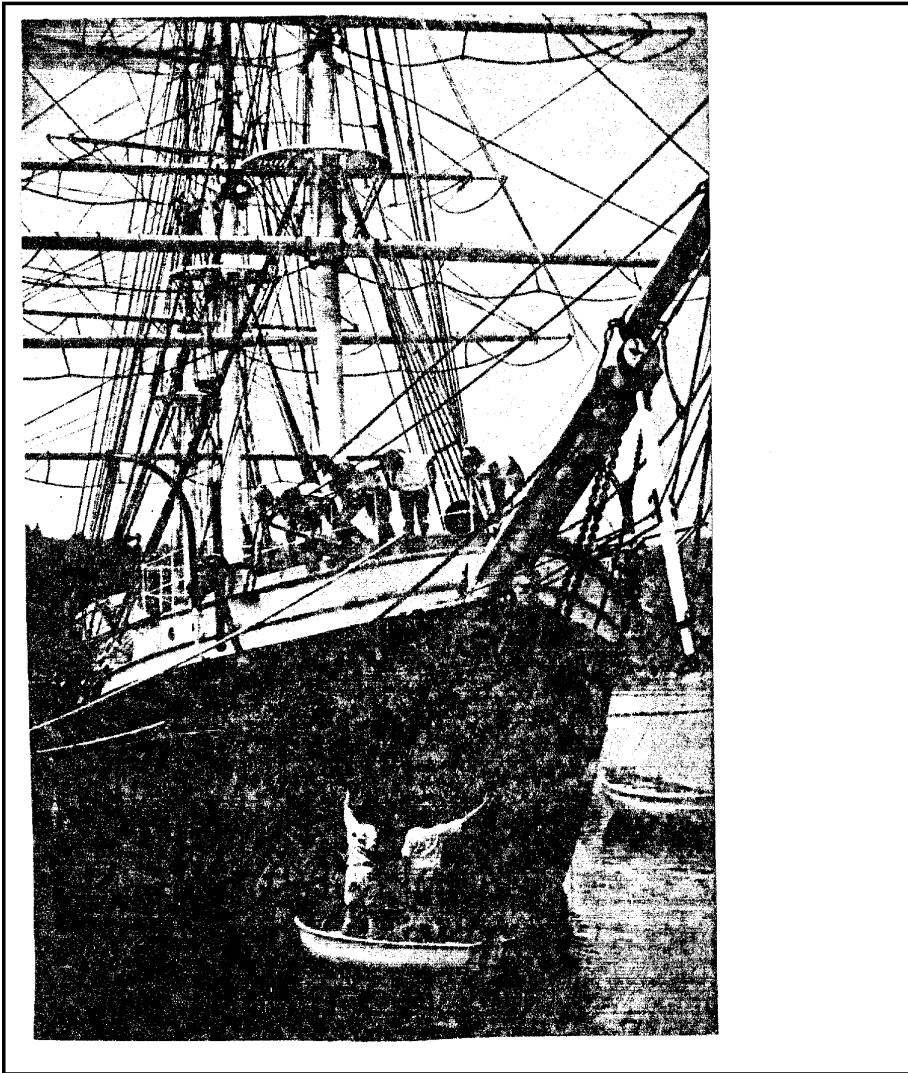
CPYRGHT

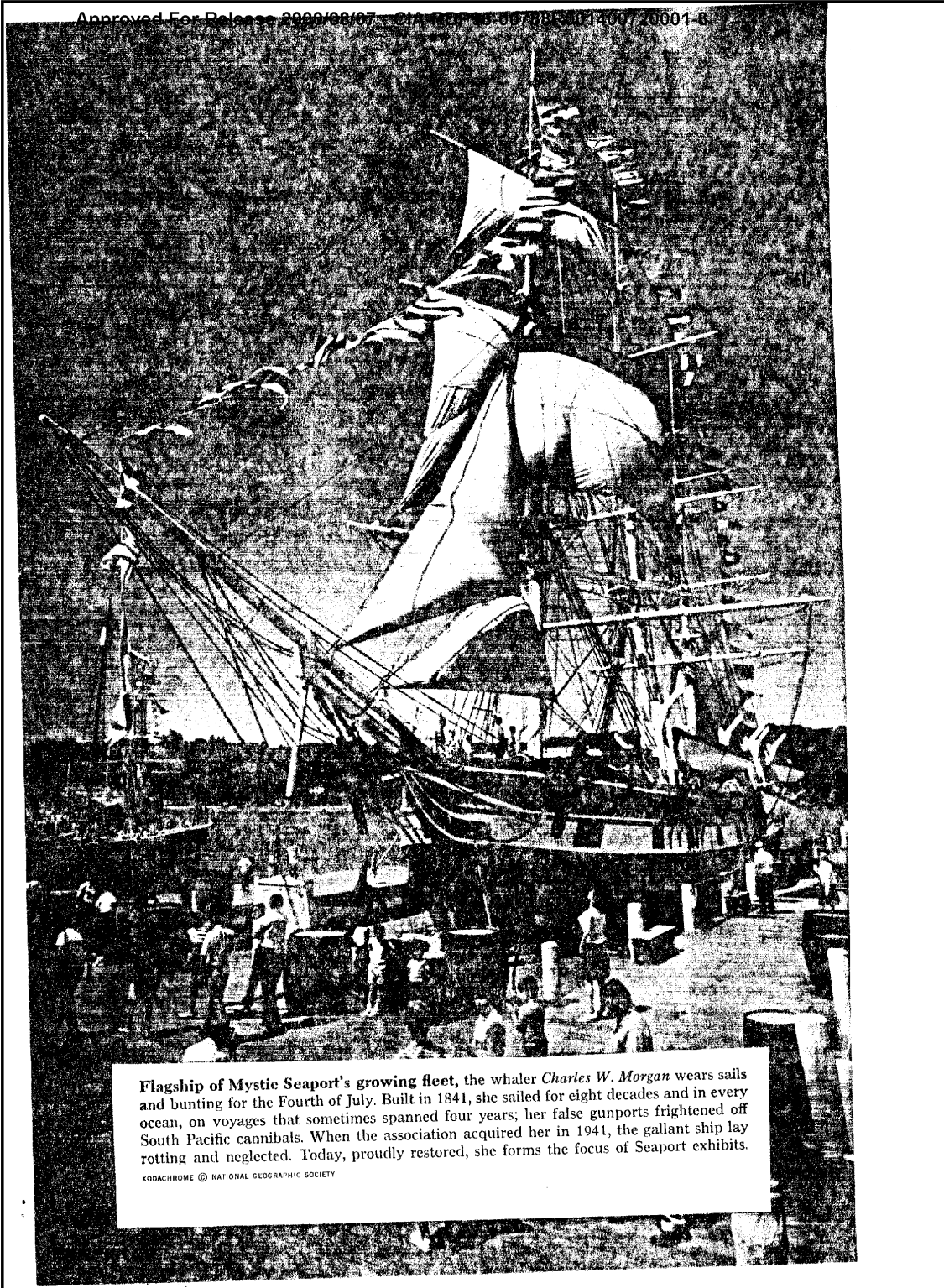
CPYRGHT



Window-shopping for history, visitors stroll along cobble Seaport Street, whose venerable shops face the Mystic River. As a setting for its vessel-lined wharves, the Marine Historical Association scoured the east coast for old maritime buildings and moved them to the Seaport, creating an authentic coastal village of a century ago. Horse-drawn wagon holds barrels for ship's provisions.

CPYRGHT



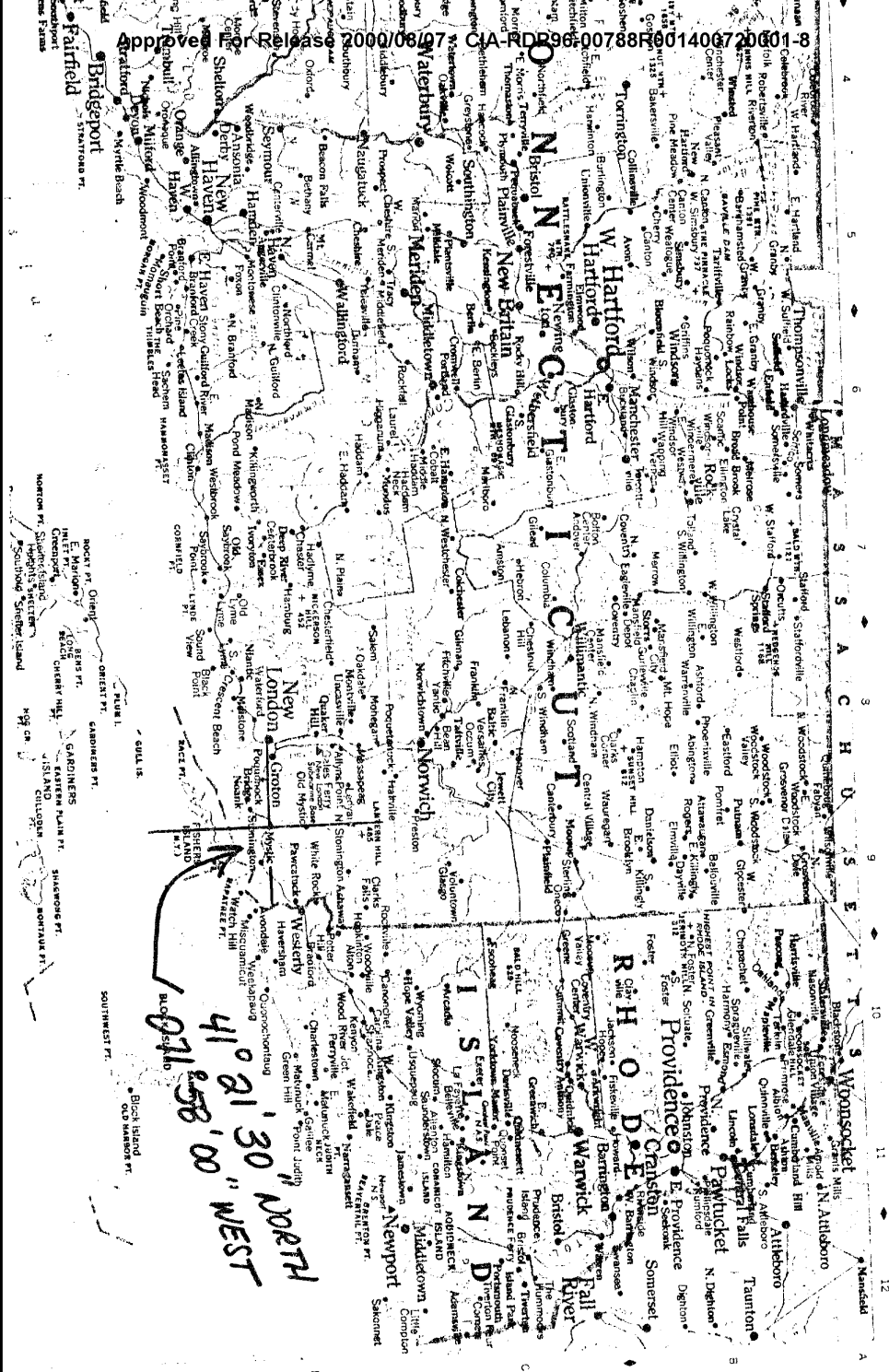


Flagship of Mystic Seaport's growing fleet, the whaler *Charles W. Morgan* wears sails and bunting for the Fourth of July. Built in 1841, she sailed for eight decades and in every ocean, on voyages that sometimes spanned four years; her false gunports frightened off South Pacific cannibals. When the association acquired her in 1941, the gallant ship lay rotting and neglected. Today, proudly restored, she forms the focus of Seaport exhibits.

KODACHROME © NATIONAL GEOGRAPHIC SOCIETY

CPYRGHT

CONNECTICUT AND RHODE ISLAND



CPYRGT