

COORDINATE REMOTE VIEWING TRAINING (CRVT)

CRVT Report: 939

DATE/TIME CONDUCTED: 211427 Oct 82

SOURCE #: 63

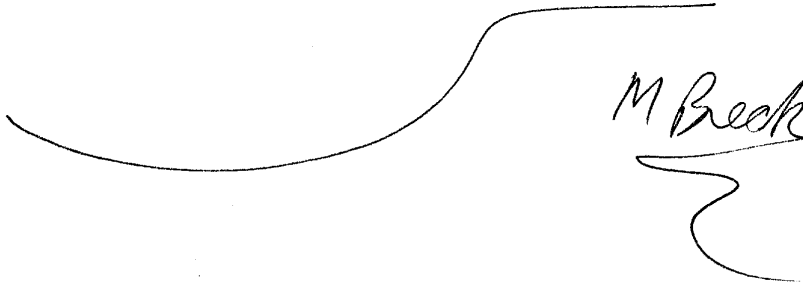
FILE #: 14

SITE: New Orleans Delta Area, see attached

EVALUATION: Valid S-2's

JOM  
21 OCT 82  
1427

29° 56' 45" N  
90° 4' 35" W



29° 56' ~~45~~ Break

29° 56' 45" N  
90° 4' 35" W

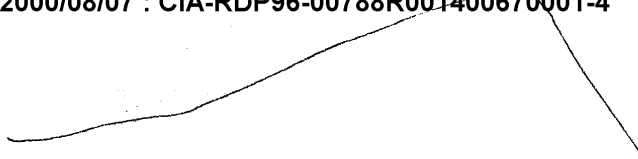


A Smooth Curving  
B —

29° 56' 45" N  
90° 4' 35" W

M Break

29° 56' 45" N  
90° 4' 35" W



A - Rising  
B - land

29° 56' 45" N  
90° 4' 35" W



A Rolling  
B - land

S-Z

green

Black

Open

29° 56' 45" N  
90° 4' 35" W



A - erotic  
B - land

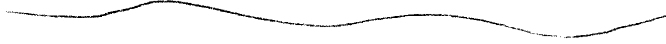
S-2

Green

Brown

Break

29° 56' 45" N  
90° 4' 35" W



A smooth fluid

B-

29° 56' 45" N  
90° 4' 35" W

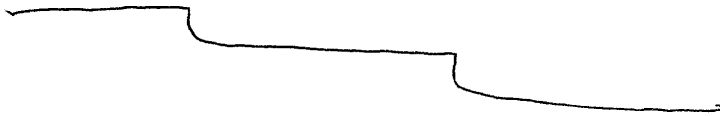


A smooth

B- fluid

Break

29° 56' 45" N  
90° 4' 35" W



Miss Break

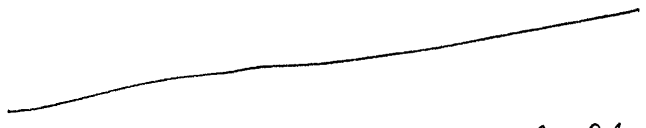


29° 56' 45" N  
90° 4' 35" W



AM Beck

29° 56' 45" N  
90° 4' 35" W



A flat Hard  
Bland

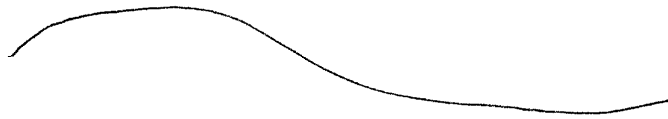
S-2

flat  
Hard  
smooth

gray  
Rock  
streaked

Break

70° 56' 45" N  
90° 4' 35" W



A

S-2

slow  
tangled

Beak

29° 56' 45" N  
90° 4' 35" W



A irregular

B land

S-2 dark green  
feilage

~~21~~ 56' 45" N  
90° 4' 35" W



A m Beck

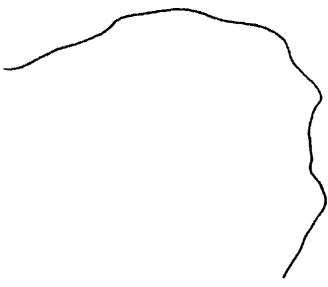
29° 56' 45" N  
90° 4' 35" W



A flat rising to flat  
B land

A rising  
B land

29° 56' 45" N  
90° 4' 35" W



A coming  
B land

Aol Beck Beck  
Amazon jungle

29° 56' 45" N  
90° 41' 35" W



A Angles  
B manmade

SZ  
—

29° 56' 45" N  
90° 41' 35" W



A ← A twisted  
B —

A erratic  
B land

29° 56' 45" N  
90° 41' 35" W



A flat C  
B land

A depressed C  
B valley



A tangled  
B vegetation  
A flat C  
B land

S-Z.

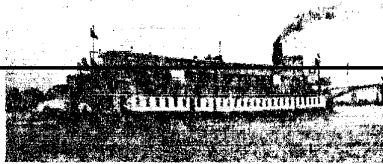
green c  
wet c  
thick veg c  
trees c  
swamp smells PC  
cool PC  
forest sounds PC  
cold water c  
slimy PC

Swamp w lot of  
trees S

End

# New Orleans AND HER River

CPYRGHT



**M**ASTER PILOT Carroll Ware wore the open smile of a child as he reached overhead, closed his fingers around a worn wooden handle, and pulled down hard. A geyser of steam erupted from the half-moon mouth of the whistle and the *Delta Queen* (above) lifted her voice, the fabled voice of Mark Twain's "great Mississippi, the majestic, the magnificent Mississippi, rolling its mile-wide tide along, shining in the sun..."

"Down New Orleans, they know what that sound means," said the pilot. "Steamboat comin'! The last one, but we're comin'!"

With the dignity of age, the 44-year-old *Queen* swung away from the levee at Vidalia, Louisiana, far upriver from New Orleans, where she had spent the night tied to willow

trees. On the wing bridge, the voice of big Capt. Ernest Wagner boomed out:

"Hard right! Half ahead! Stick her stern in the eddy, and the river will pull us around."

With swifter tempo, the red stern wheel pounded into foaming hillocks behind us the snows and rains of a million square miles. We voyaged on a vast flood that has carried men south for centuries—Frenchmen with furs in birchbark canoes, swaggering "Kaintucks" in flatboats and keelboats stuffed with the bounty of a new land, captains and roustabouts on steamboats packed to the smokestacks with bales of cotton. Their destination was now mine: New Orleans, that city of Mediterranean mood where peoples of many cultures—French, Spanish, American, African—have created a singular way of life.

CPYRGHT





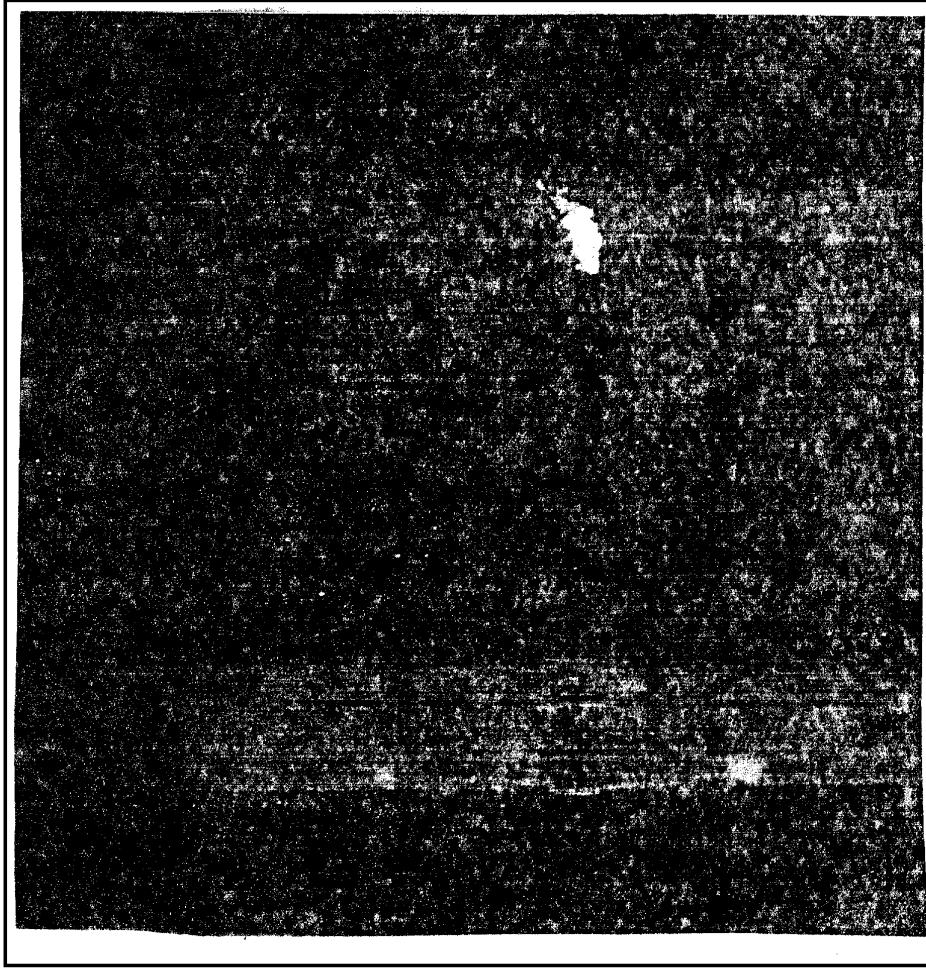
Time of make-believe magic, the Mardi Gras season begins on Twelfth-night, January 6, and ends 60 glittering galas later. Regally robed, scepter in hand, Her Royal Majesty the Mystic Queen greets guests at the Mystic Club Ball in Municipal Auditorium.

Gaudy Bourbon Street, famed for its open-door cabarets—to let potential customers have a peek at the dancers inside—throbs with activity at any time of year. But the last night of carnival brings out the biggest throngs (lower), intent on paying homage to Comus, god of revelry. Carnivalgoers awake on Ash Wednesday, humorist Ring Lardner once remarked, "feeling like Rex in a state of Comus."



CPYRGHT

CPYRGHT

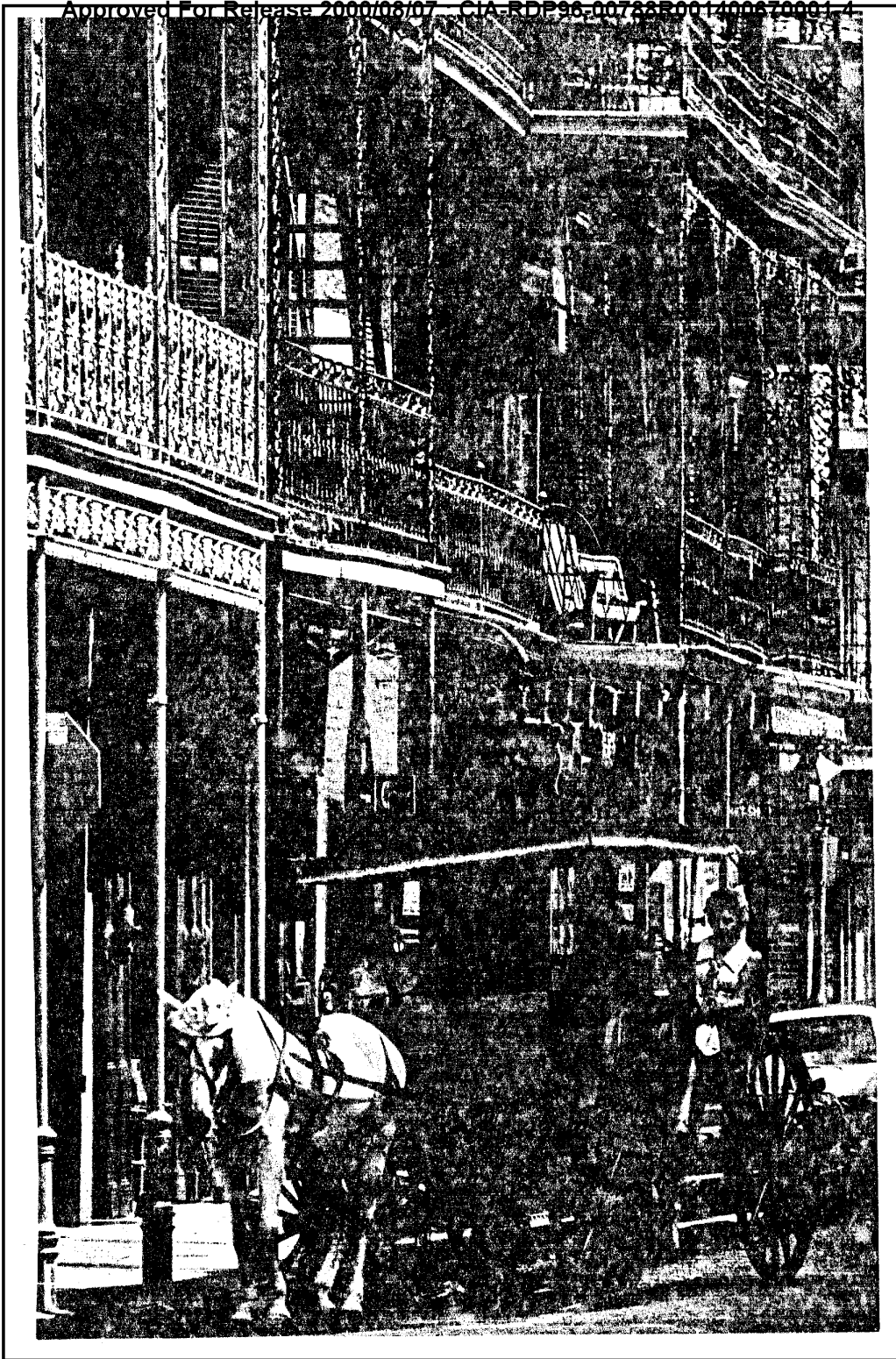


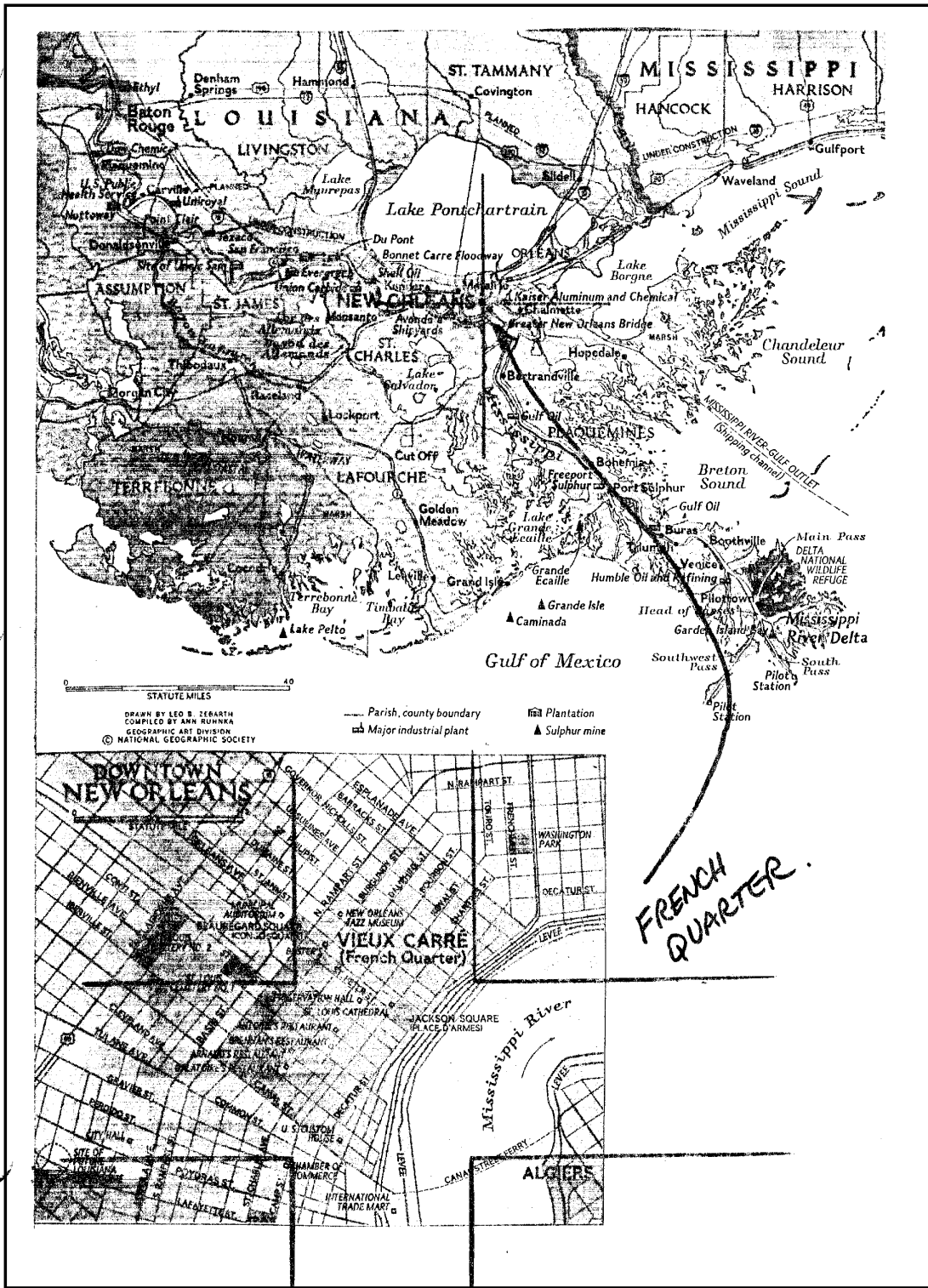
CPYRGHT

Churning past Louisiana's last outpost, South Pass Pilot Station, a freighter nears the Gulf of Mexico. A bar pilot guides the vessel through the narrow jetty-walled channel to the gulf, where he will debark and steer another ship upriver to Pilottown, 15 miles north.



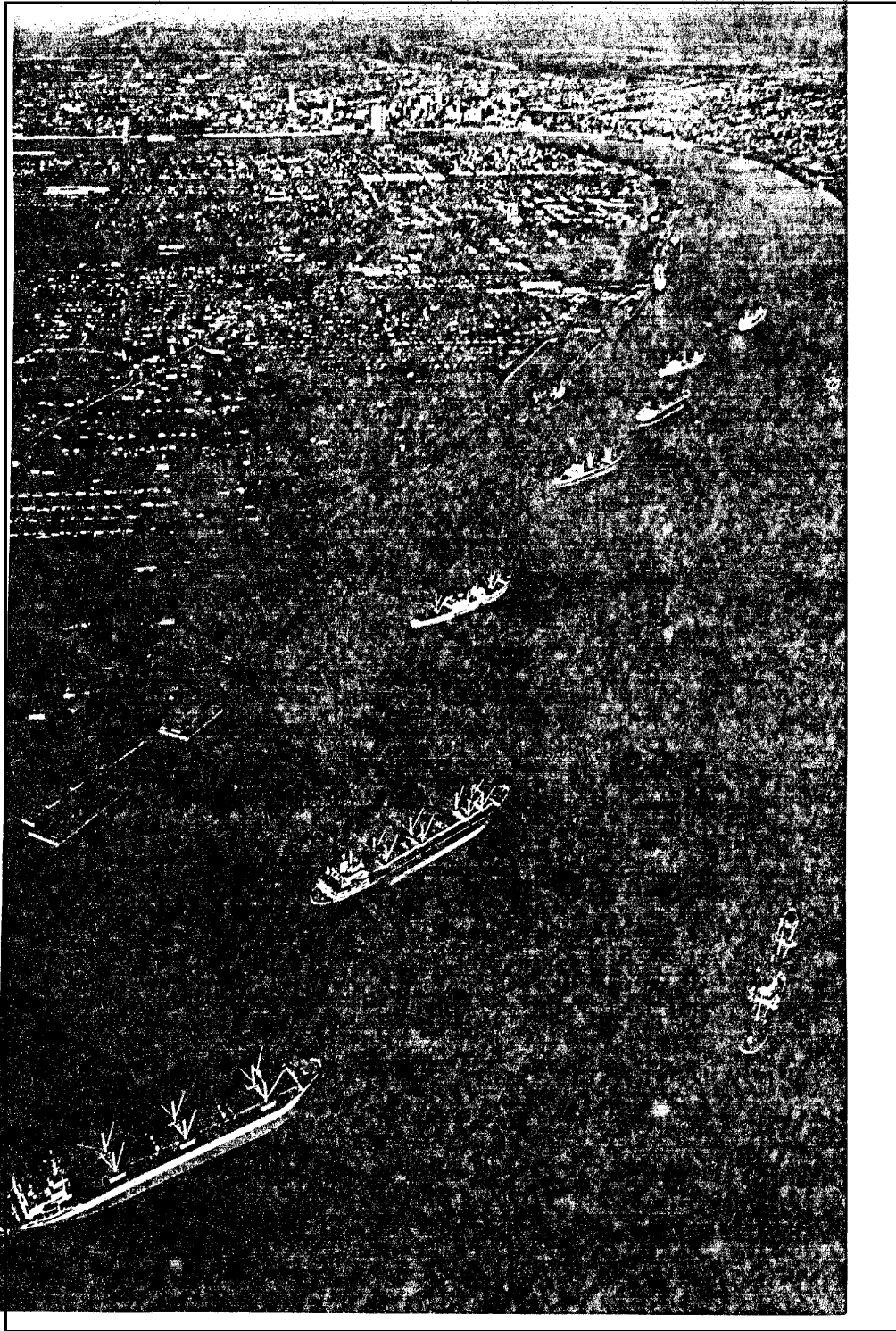




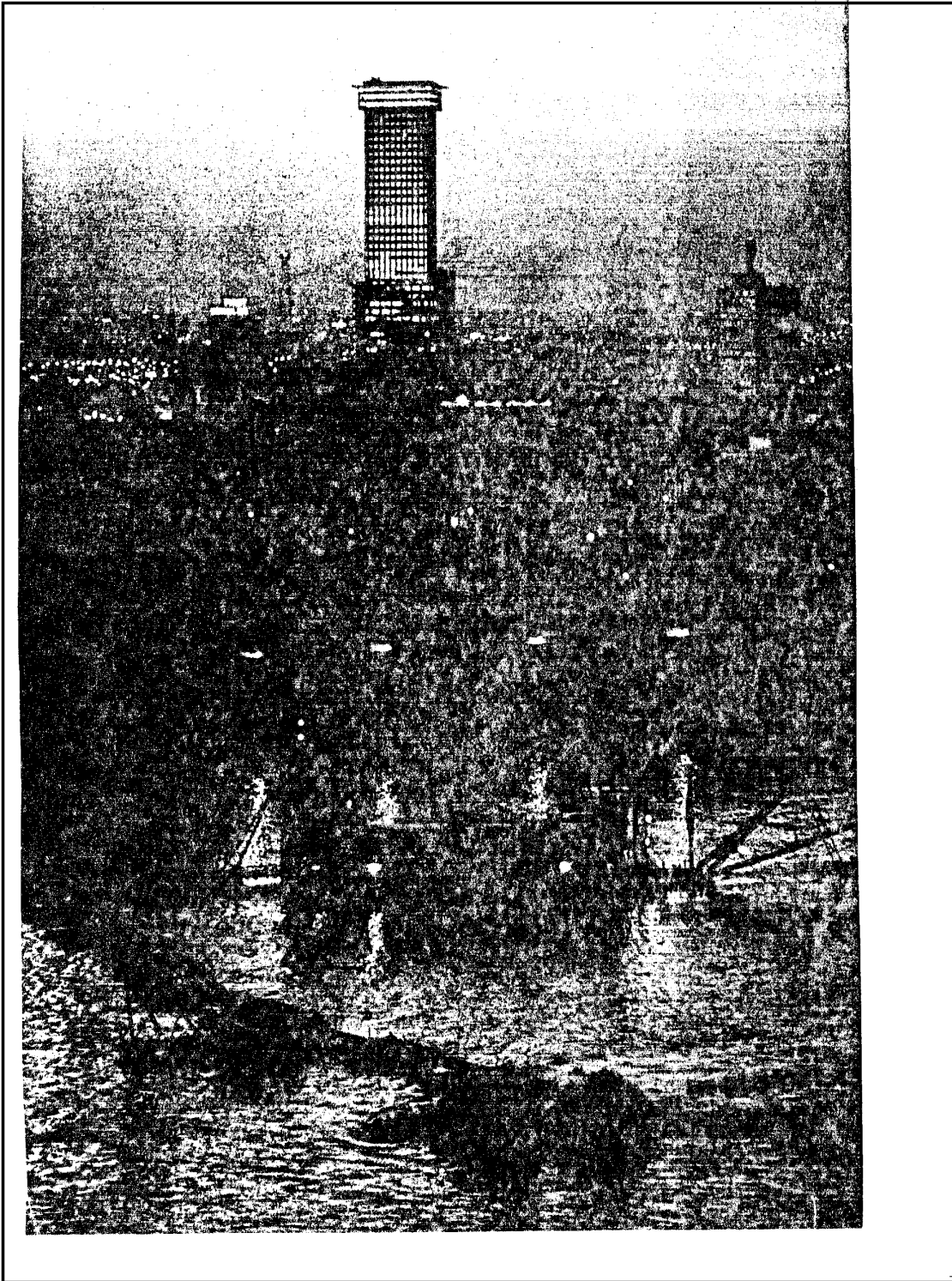


CPYRIGHT

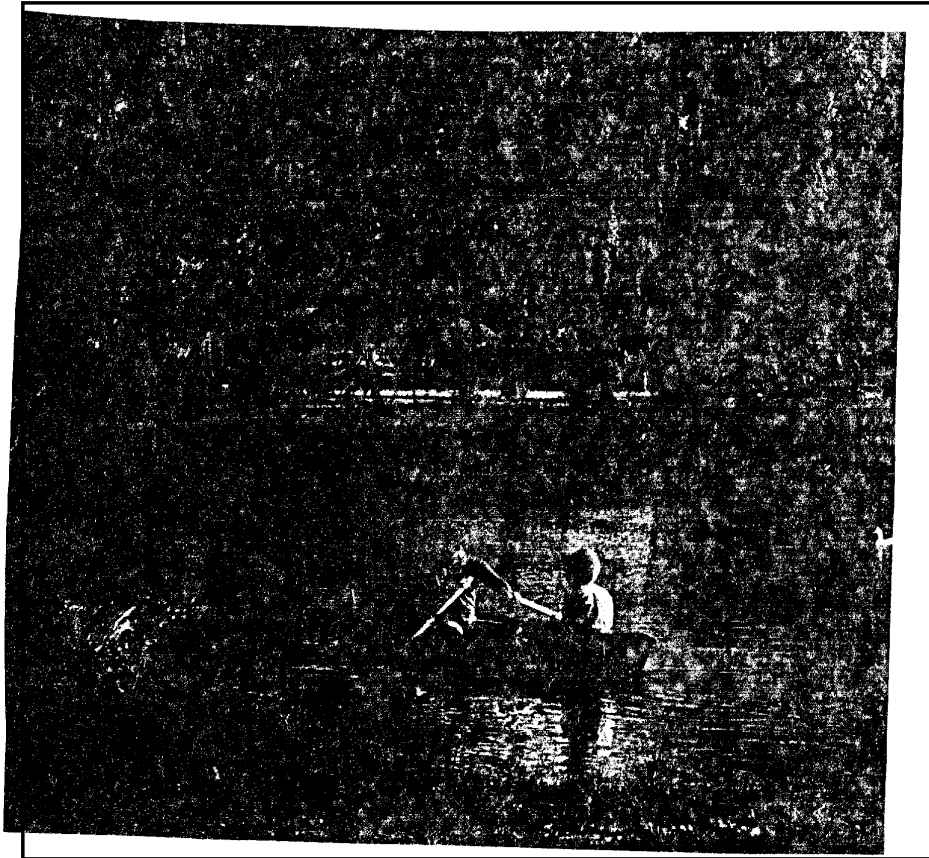




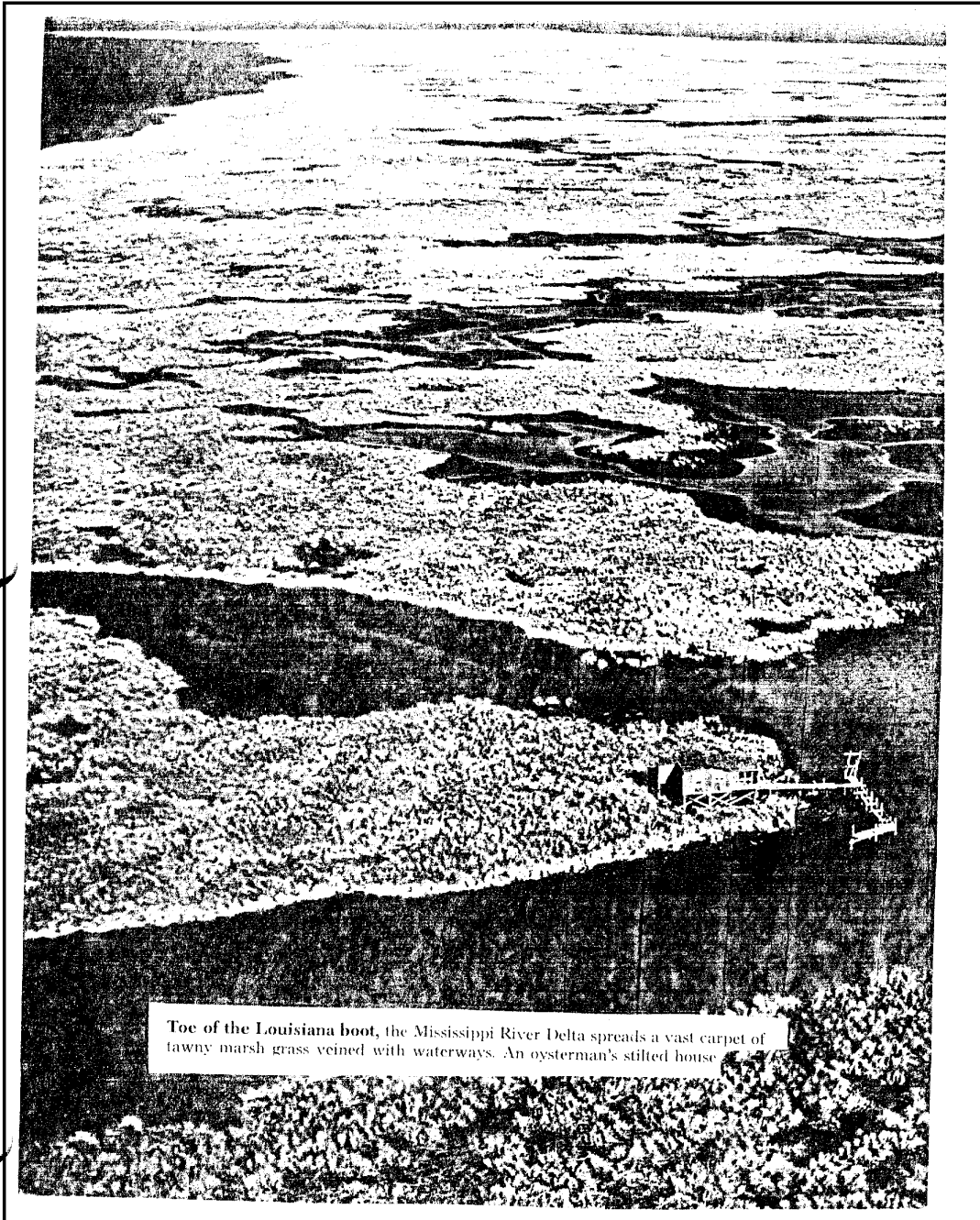
CPYRGHT



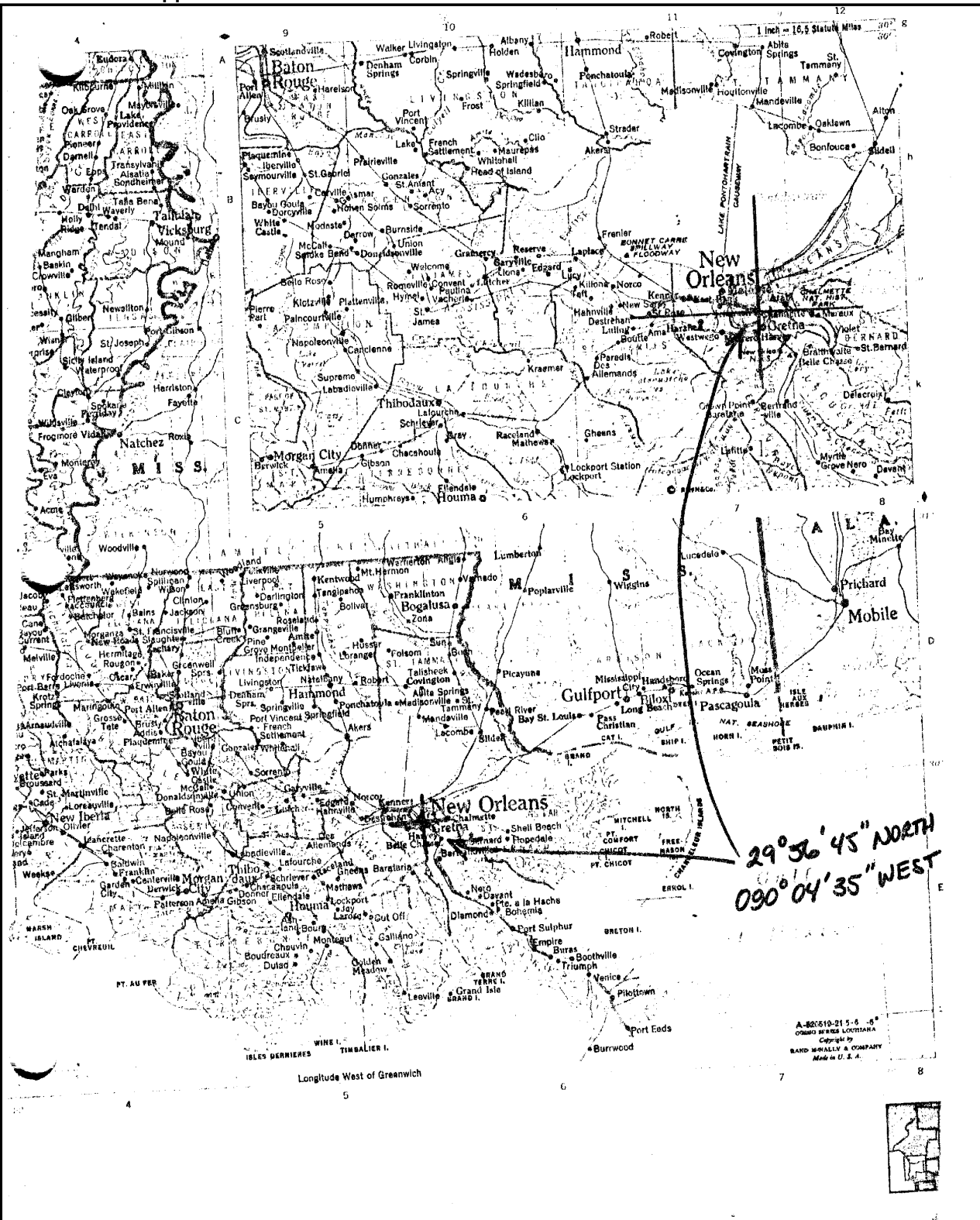
CPYRGHT



CPYRGHT



Toe of the Louisiana boot, the Mississippi River Delta spreads a vast carpet of tawny marsh grass veined with waterways. An oysterman's stilted house



CPYRIGHT