

SECRET

INSCOM
GRILL FLAME
PROGRAM

SESSION REPORT

CLASSIFIED BY: MSG, DAMI-ISH
051630Z JUL78
REVIEW ON: June 2002

GRILL FLAME

NOT RELEASABLE TO FOREIGN NATIONALS

ORCON

SECRET

SECRET

SUMMARY ANALYSIS

REMOTE VIEWING SESSSION #923

1. (S/NOFORN) This report provides documentation of a remote viewing session conducted for training purposes only.
2. (S/NOFORN) The protocol used for this session is detailed in the document GRILL FLAME Protocol, AMSAA Applied Remote Viewing Protocol (S), undated.
3. (S/NOFORN) Post session analysis on target viewing indicates the viewer had very little or no correlation.
4. (S/NOFORN) Following is a transcript of the viewer's impressions during the remote viewing session. At TAB A are drawings and narrative made by the viewer. At TAB B is target cuing information. Also included is available target data.

NOT RELEASABLE TO FOREIGN NATIONALS

SECRET

SECRET

TRANSCRIPT

REMOTE VIEWING SESSION #923

#66: This will be a remote viewing session for 1000 hours
11 June 1982. Relax now, close your eyes. Concentrate
solely on your task for this morning. Relax. Focus,

26 Degrees 20 minutes 30 seconds North
56 degrees 20 minutes 00 seconds East

Relax now. Focus on the target.

26 degrees 20 minutes 30 seconds North
56 degrees 20 minutes 00 seconds East

And describe the target to me.

#63: Flat, circular area, pillar, arches, modern looking area.

26 degrees 20 minutes 30 seconds North
56 degrees 20 minutes 00 seconds East

#63: Pill top barrier, dome, (mumble) man made structure.

#66: 26 degrees 20 minutes 30 seconds North
56 degrees 20 minutes 00 seconds East

#63: Everything modernistic.

~~#66~~ 26 degrees 20 minutes 30 seconds North
56 degrees 20 minutes 00 seconds East

From overhead, describe the area surrounding the target.

#63: Many large buildings, large city.

#66: 26 degrees 20 minutes 30 seconds North
56 degrees 20 minutes 00 seconds East

#63: Target circular.

#66: Describe the terrain around the target.

26 degrees 20 minutes 30 seconds North
56 degrees 20 minutes 00 seconds East

#63: Concrete parking area, steps, small trees planted there,
small forested area, northwest. Large....large open
feeling inside, a domed roof.

SECRET

SECRET

#66: Stand on top and look out and around you, stand on top and look out and around you and describe.

#63: Very cluttered.

#66: Beyond the clutter?

#66: 26 degrees 20 minutes 30 seconds North
56 degrees 20 minutes 00 seconds East

#63: Target appears to be in the middle of a large city. and a small forested area to the northwest, like a park. Target is large, mostly by itself. It's surrounded by parking lot.

#66: Describe this cluttered area to me.

26 degrees 20 minutes 30 seconds North
56 degrees 20 minutes 00 seconds East

#63: Many man made structures that's old and target's new, part of town, old part, part of it being rebuilt, parts, old parts left.

#66: Describe the terrain on which the town is located.

26 degrees 20 minutes 30 seconds North
56 degrees 20 minutes 00 seconds East

#63: Flat area, very, very large river valley of some kind. River relatively large now, it's a river valley that's very large. The trees in the area are small, planted for landscaping purposes. See a little park on the water, flat. ?

#66: Describe the water to me.

#63: Wide, flat, dark gray, slow flowing, much like the Mississippi around St Louis. ?

#66: Describe your perspective to me.

#63: Cross the shore on a bridge or something.

#66: Look to your left and describe.

#63: Tall structure.

#66: Beyond?

#63: Wait, tall structure is important, monument sometimes, beyond is dense city.

SECRET

SECRET

- #66: Now look back around to your right, to your right is straight ahead.
- 26 degrees 20 minutes 30 seconds North
56 degrees 20 minutes 00 seconds East
- #63: River, to the north, when I look to the right, I'm looking north up the river.
- #66: Move face to the front again, now describe what is behind you.
- #63: Behind me are these...new part of city.
- #66: Describe city to me.
- #63: Tall structures, very tall buildings.
- #66: Describe activity in city.
- #63: Slow tourist trade, small manufacturing industry, depressed.
- #66: Describe the activity in the streets.
- 26 degrees 20 minutes 30 seconds North
56 degrees 20 minutes 00 seconds East
- #63: Cars going east to west.
- #66: Describe the people.
- #63: Walking along side of the road, sidewalk.
- #66: Describe their dress.
- #63: One guy wearing plaid shirt, no tie, short hair, relaxed atmosphere, shopping area.
- #66: Describe the shops.
- #63: A large department store as opposed to a small shop. Tall buildings, glass store fronts, strong feeling.
- #66: All right. There is a unique terrain feature in this area. Find it and describe it to me.
- #63: I'm back to my round object, large round object, domed roof.
- #66: All right. I have no further questions concerning the target. Let me provide you now with the opportunity to explore and see fit.
- #63: I have a lot of overlay. ✓

SECRET

SECRET

- #66: Report.
- #63: Seeing a picture, like driving across the bridge into St Louis, with the arch on the left, and park on the right. ←
- #66: All right.
- #63: I think that's it.
- #66: Okay. Let's prepare to draw the perceptions you've had.

SECRET

TAB

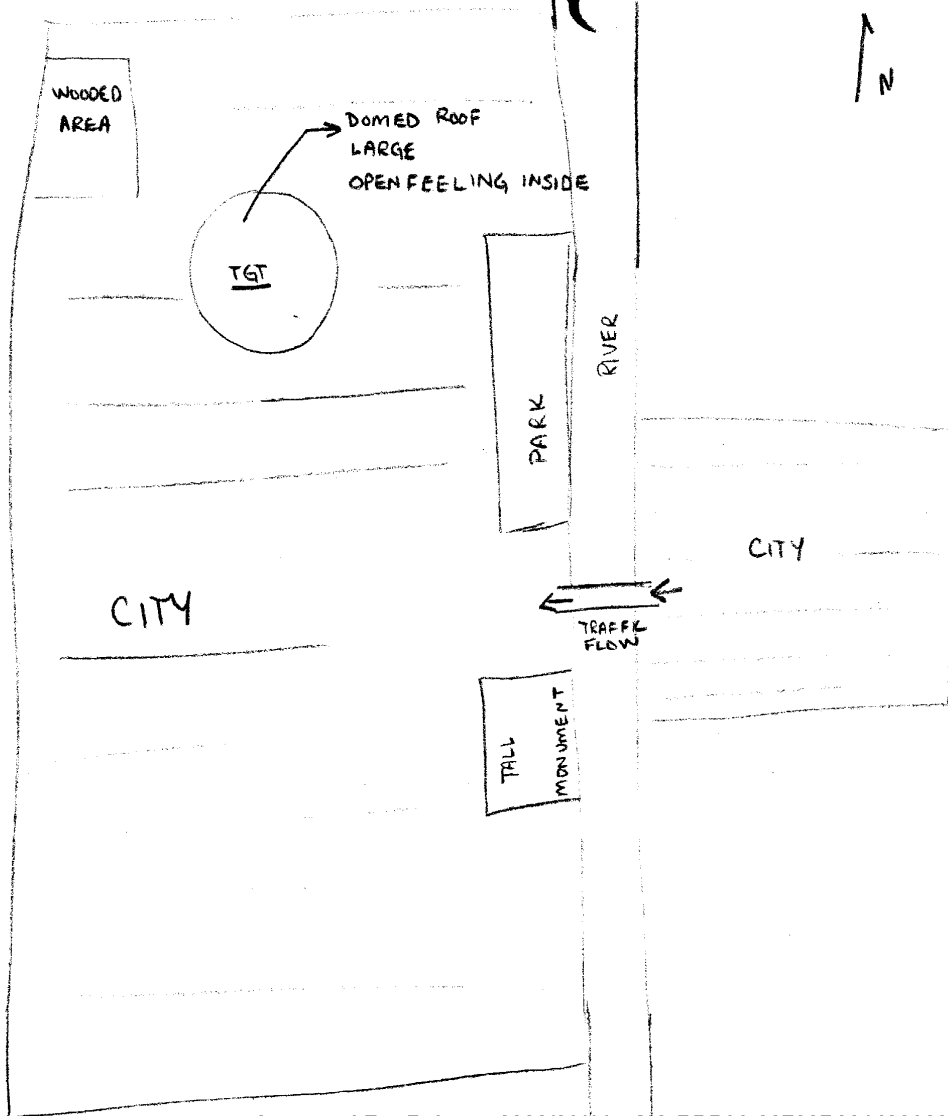
SECRET

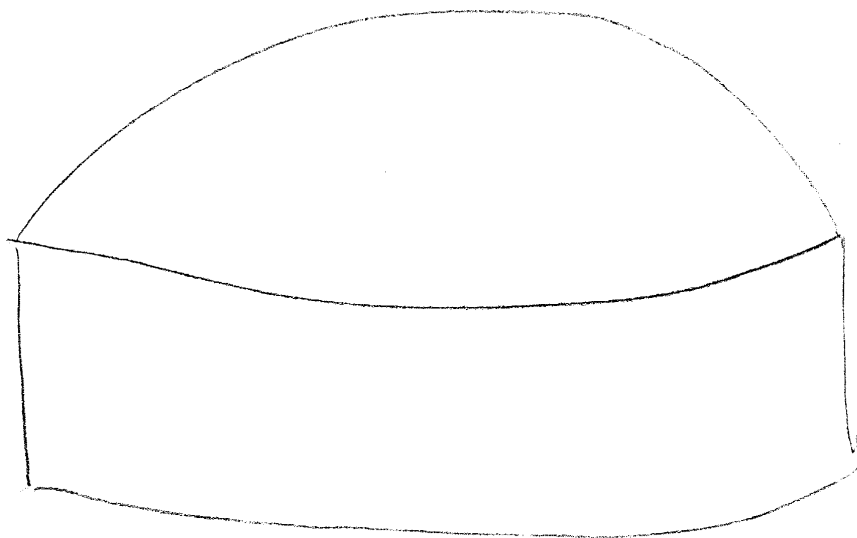
DRAWING NARRATIVE

REMOTE VIEWING SESSION #923

- #63: This is the description of my drawings. Drawing #1 shows a large city that has a river flowing through it. I have depicted North on the page. The city on the left side, or the west side of the river is larger than the portion of the city on the East side of the river. There's a bridge connecting the two parts of the city. To the Southwest of the bridge is a tall monument of some kind. To the Northwest of the bridge is a park. I feel like my target is located where I've depicted the big circle. And to the Northwest of that is a wooded area, perhaps another park. This is tremendously like St. Louis, which I've driven through and taken pictures of and I'm afraid perhaps this is overlay from St Louis, because it seems so tremendously like St. Louis.
- Page #2 is the actual drawing of my target, that's the circular figure which I depicted as the target in page #1. It has a domed roof, it is large and it has an open feeling inside, and it is surrounded by the city, however it is separated from the city somewhat by parking lots or open areas. Buildings from the city don't go right up to it. And it has a sports arena sort of feeling about it, very large and open and that's it.
- #66: Okay. How do you feel about your session?
- #63: It wasn't real clear today. I didn't have a great deal of data coming to me though. So if it is correct, it's probably pretty correct, because I didn't have a lot of wasted data coming with it. It was a quick session. And I don't feel like I stayed with the target, I don't feel like I stayed with the actual target much.
- #66: How about your feelings of overlay?
- #63: Well, I do have a feeling of overlay that I have to wait and find out what the data is, find out about that. I feel pretty good about the session.
- #66: Okay.
- #63: And that's it.

SECRET





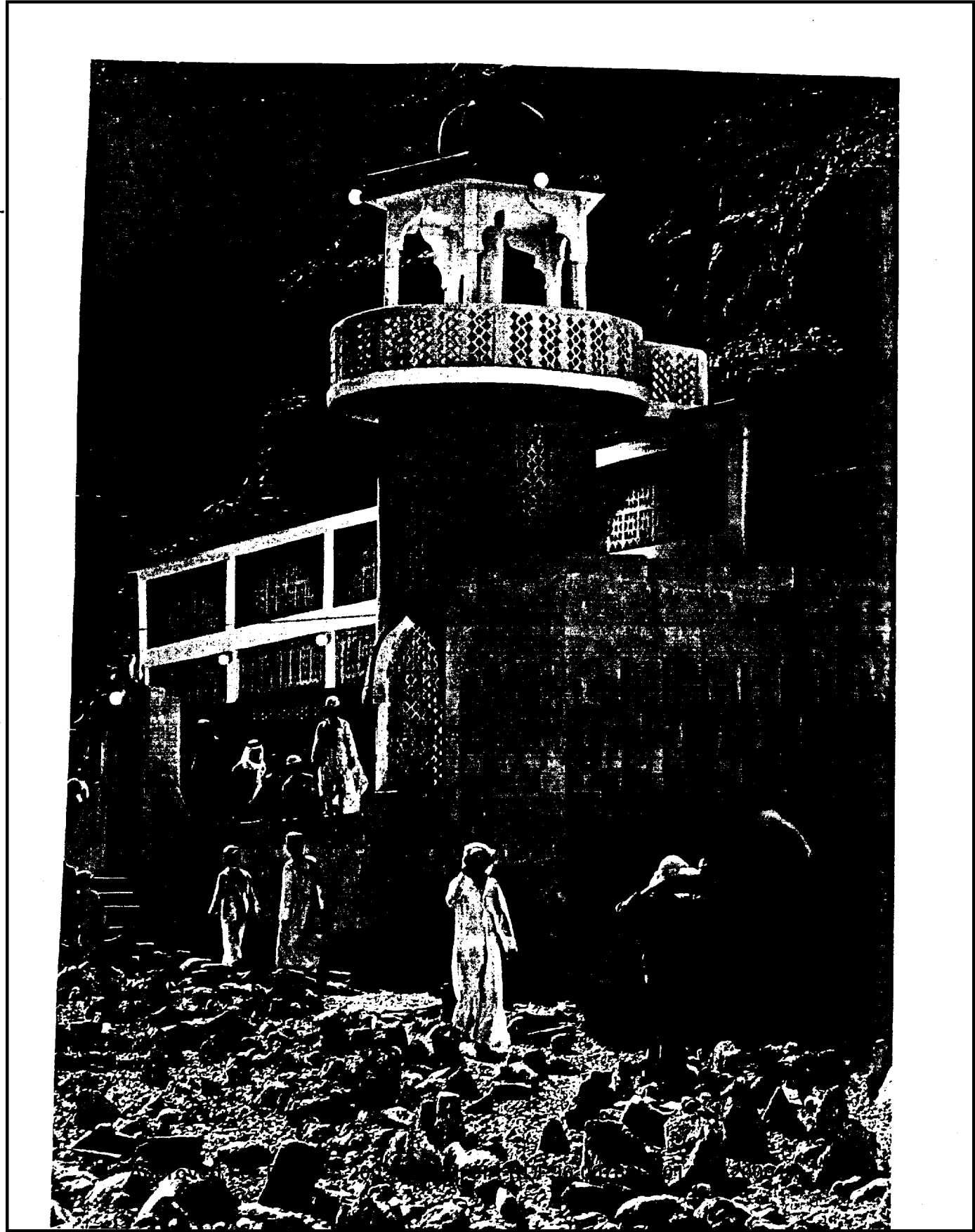
DOMED ROOF
LARGE
OPEN FEELING INSIDE
SURROUNDED BY CITY
SEPARATED FROM CITY
BY PARKING LOTS
OR OPEN AREAS
(SPORTS ARENA)

TAB

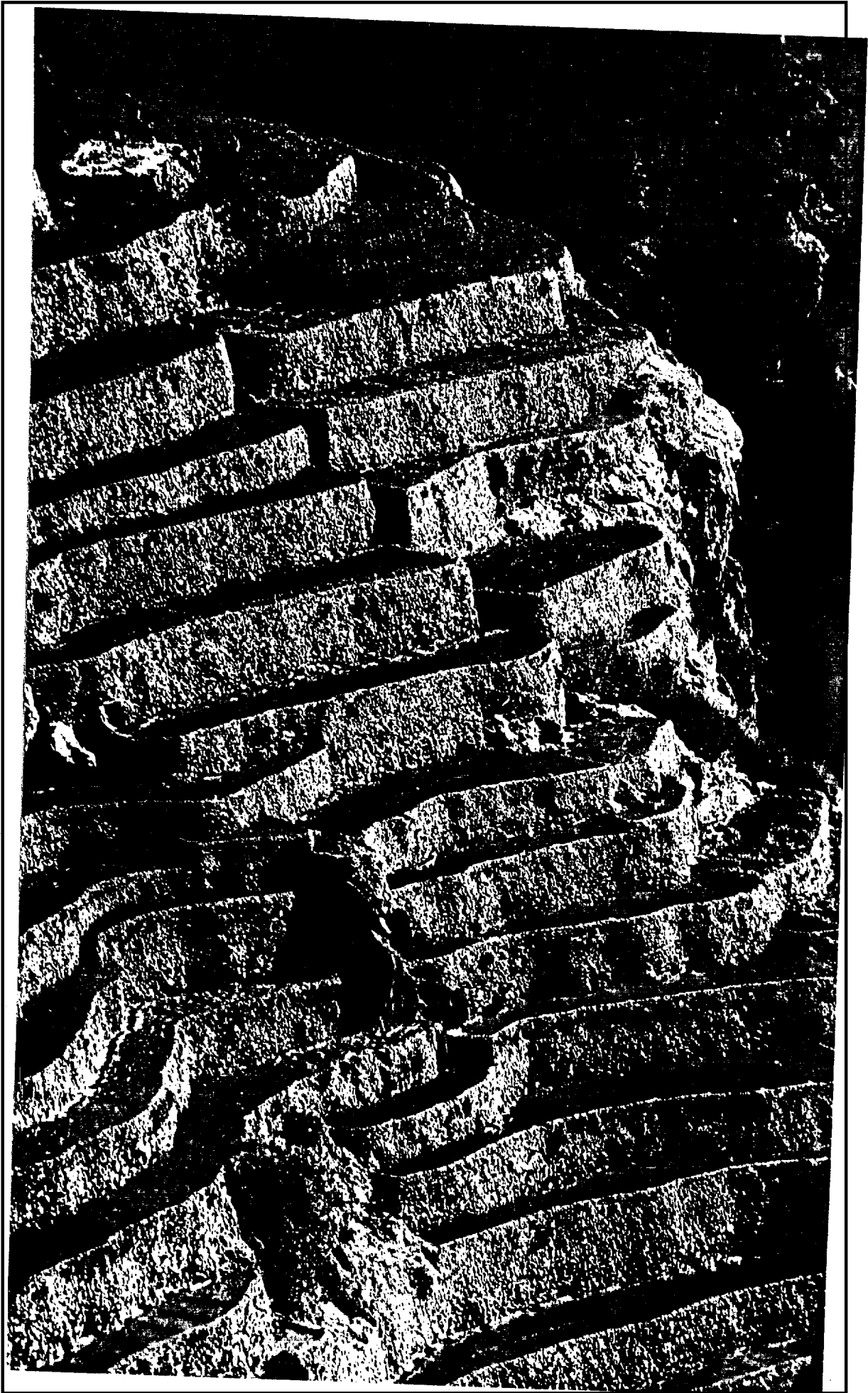
TOWN OF KUMZAR

CPYRGHT

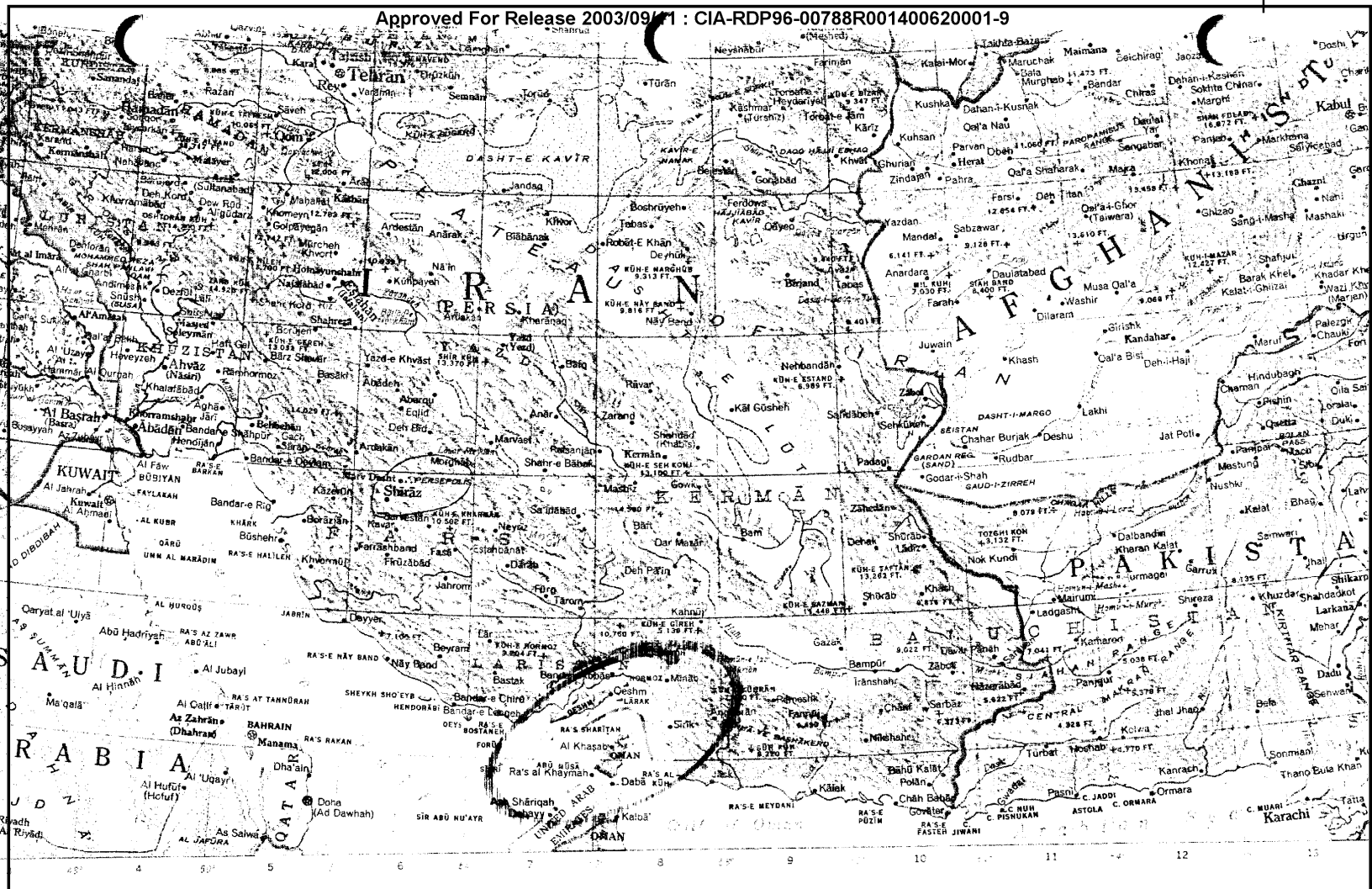
MUSANDAM PENINSULA - OMAN.



CPYRGHT



Approved For Release 2003/09/11 : CIA-RDP96-00788R001400620001-9



26° 20' 30" NORTH
056° 20' 00" EAST

TARGET A9