

SECRET

INSCOM
GRILL FLAME
PROGRAM

SESSION REPORT

CLASSIFIED BY: MSG, DAMI-ISH
051630Z JUL78

REVIEW ON: *April 2002*

NOT RELEASABLE TO FOREIGN NATIONALS

ORCON

GRILL FLAME

SECRET

SUMMARY ANALYSIS

REMOTE VIEWING SESSION 887

1. (S/NOFORN) This report provides documentation of a remote viewing session conducted for training purposes only.
2. (S/NOFORN) The protocol used for this session is detailed in document GRILL FLAME Protocol, AMSAA Applied Remote Viewing Protocol (S), undated.
3. (S/NOFORN) Post session analysis on target viewing indicates the viewer had a considerable amount of correlation. The viewer's attitude was positive.
4. (S/NOFORN) Following is a transcript of the viewer's impressions during the remote viewing session. At TAB A are drawings and narrative by the remote viewer. At TAB B is target cuing information. Also included is available target data.

NOT RELEASABLE TO FOREIGN NATIONALS

SECRET

SECRET

TRANSCRIPT

REMOTE VIEWING SESSION # 887

#66: This will be a remote viewing session for 0900 hours, 12 April 1982.

Focus now solely and completely on the target designated for today. Relax and concentrate.

42 degrees 44 minutes 20 seconds North
93 degrees 43 minutes 00 seconds West

Focus and concentrate now, focus.

42 degrees 44 minutes 20 seconds North
93 degrees 43 minutes 00 seconds West

Concentrate on the target and describe it to me.

PAUSE

42 degrees 44 minutes 20 seconds North
93 degrees 43 minutes 00 seconds West

Target coordinate.

#63: ~~Flat area, slight rise, target on top of rise. Low structure, roadway curved going to structure.~~

#66: Describe the area surrounding the structure.

#63: ~~Flat in the immediate vicinity, rugged hills or mountains.~~

#66: Foliage?

#63: ~~Hills or mountains are off in the distance. Foliage..~~
um...unsure I think there's grass, no big trees.

#66: From overhead now, focus on the target. From headhead, focus on the target and describe only the target to me.

#63: ~~Cross pattern and the target is in the middle. Got a round and square target...round target with a square facade. vertical lines.~~

#66: Stand on the ground now and face the target and describe. Back from the target so you can see it. Back up just a little bit so you can see all and describe it to me.

III

SECRET

SECRET

- #63: Low, vertical lines ~~for walls~~, open areas, courtyard, atriums...flat, slightly dome roof.
- #66: Describe the activity at the target to me.
- #63: None. Feel like it's a small manufacturing office building.
- #66: Describe the raw data that gives you this perception.
- #63: Size, lack of large machinery, feeling of building.
- #66: Describe the inside of the building to me.
- #63: Dark floor, beige walls, lots of glass, metal building, metal desk.
- #66: Are you alone?
- #63: Yes.
- #66: Now outside-----
- #63: In this room I'm alone.
- #66: Outside again, describe the target from outside, up over head, 100 feet up to the oblique, looking down and describe.
- #63: ~~Round, vertical lines, flat or slightly domed roof, dark patterns center of roof..sort of open area under roof, cross pattern over roof.~~
- #66: Okay. Now look out and around the target and describe the most prominent terrain feature to me.
- PAUSE
- #63: I guess that mountain in the back, not exceptionally tall, jagged, steep vertical rise.
- #66: All right. I have one question for you, one and only one question. Describe to me how I can best find this target. Describe to me how I can best identify or locate, find this target. Ask yourself how can I best find this target and describe your answer to me.
- PAUSE
- #63: ~~The buildings best thing I have. A round building with square facade, lines. Best I can do.~~
- #66: Okay. Let's prepare to draw those impressions you have had concerning the target.

SECRET

TAB

SECRET

REMOTE VIEWING SESSION #887

(DRAWING NARRATIVE)

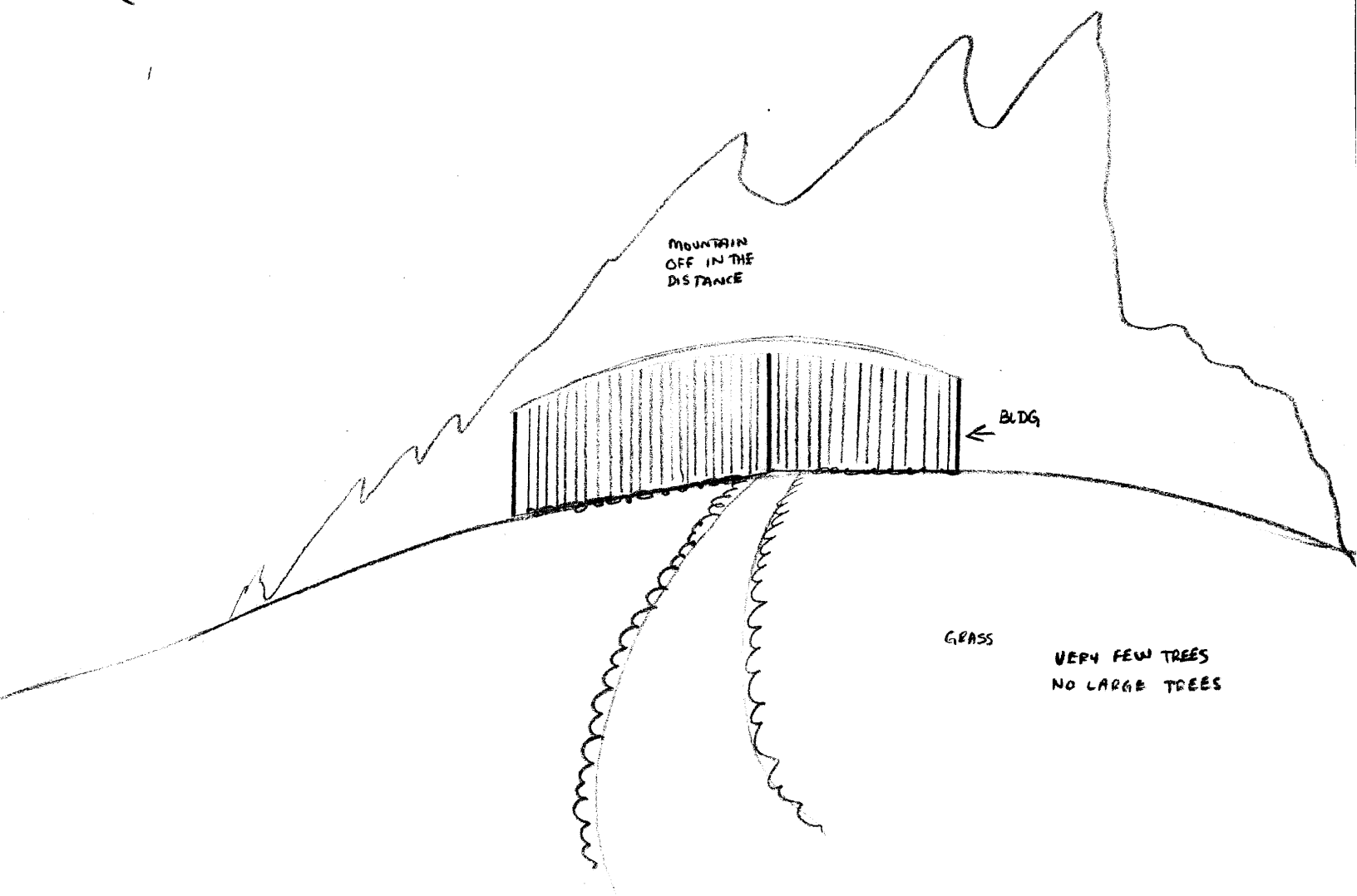
- #63: All right, this is a discussion of my drawings. Drawing # 1 is the initial view I got of the building. I was standing down at the front of the page looking up the driveway to this low structure on a rise. The area was very flat immediately around the building and there was a mountain, not a very large mountain, but it had a high vertical rise to it. And it was jagged and it was off in a distance to the back. And the building was made up of a lot of vertical lines and had a flat or slightly domed roof as you see in the drawings.
- Drawing # 2 is a vertical drawing of the building. The square box around the circle is the, what I call the facade of vertical lines. They were open, light and air would pass through them. And in the corners was a courtyard feeling. And the actual structure is the circle and it had some sort of an X, little fancy thing on the roof, I don't know what that was.
- Drawing #3 is an oblique version to show the relationship of the square facade of open vertical lines in comparison to the actual building. And that's all I have.
- #66: Okay. On the inside during the very short time that you went to the inside of what you've drawn here, did you feel an open or cluttered feeling? Generally on the inside of this, what does it feel like?
- #63: It was a metal building, sheet metal, glossy paint. It had an open feeling and lots of windows. And I saw a metal desk and chair and there was nobody in that room, but I think there was somebody in the building, like a night watchman or something. I have a feeling that this place is closed right now. ?
- #66: Okay. But a generally open feeling as opposed to many subdivisions of offices or something like that?
- #63: I think it had subdivisions, but it was still open at the same.
- #66: And it had lots of glass?
- #63: Glass, right.

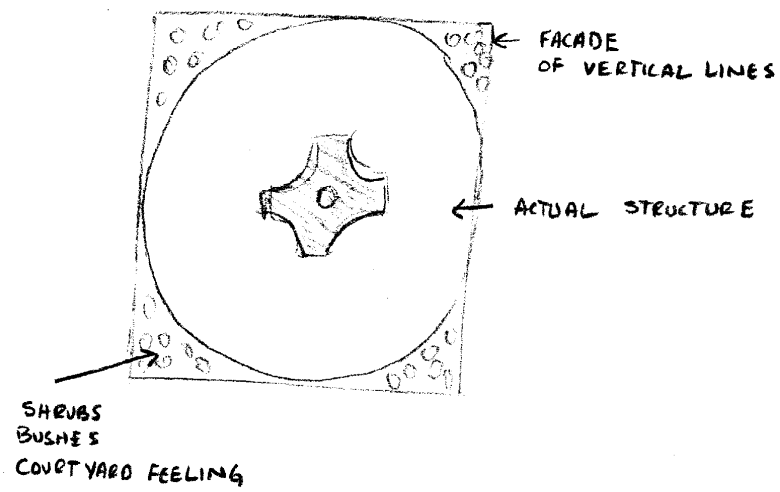
SECRET

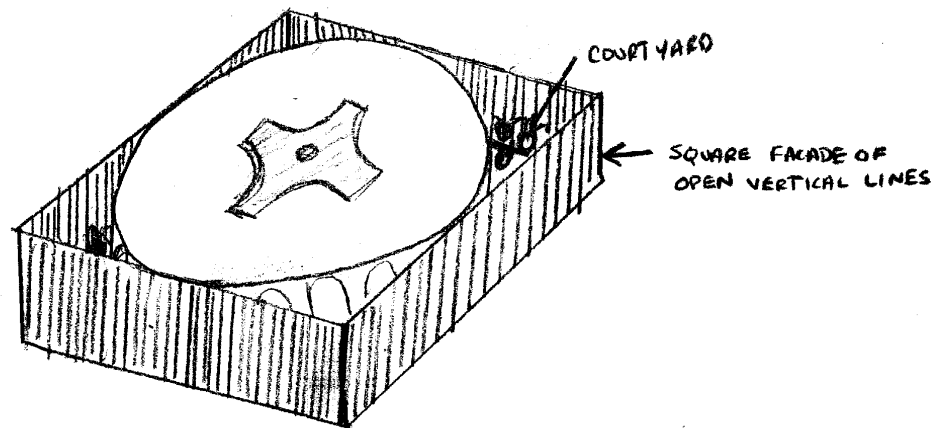
SECRET

- #66: Okay. Now, my one other question is, you didn't mention here, I see you drew it on your foliage, but this is not an area that is in a pine forest apparently.
- #63: No.
- #66: You said that it was, it had grass around it?
- #63: I think that it was probably planned by the people who own it, like a lawn or something. It didn't seem to be doing particularly well.
- #66: How about in a vast expanse around the target, looking around, what you see around the target? Do you remember?
- #63: I got a lot of white, but that might be overlay. Matter of fact, let me ~~rephrase~~ that. I got a lot of white, but I have been to Nevada so many times on these things, that I said well I can't be in the desert again so let's not make it desert, let's put grass and stuff right there. But I didn't see trees.
- #66: Okay. So it is not a--
- #63: Wooded area.
- #66: Wooded area. Now are there other, is it a cluttered area of man made structures or open area relatively.
- #63: Open area.
- #66: Okay. Anything else you have to add?
- #63: No, that's it.
- #66: Okay, fine.

SECRET







TAB

Referral Review by NIMA/DoD

Approved For Release 2003/09/11 : CIA-RDP96-00788R001400310001-3



Approved For Release 2003/09/11 : CIA-RDP96-00788R001400310001-3

42° 44' 20" NORTH
093° 43' 00" WEST

34