

**SECRET**

INSCOM  
GRILL FLAME  
PROGRAM

SESSION REPORT

CLASSIFIED BY: MSG, DAMI-ISH  
051630Z JUL78  
REVIEW ON: Feb 2002

NOT RELEASABLE TO FOREIGN NATIONALS

**GRILL FLAME**

**SECRET**

~~SECRET~~

SUMMARY ANALYSIS  
REMOTE VIEWING SESSION 862

1. (S/NOFORN) This report provides documentation of a remote viewing session conducted for training purposes only.
2. (S/NOFORN) The protocol used for this session is detailed in document GRILL FLAME Protocol, AMSAA Applied Remote Viewing Protocol (S), undated.
3. (S/NOFORN) Following is a transcript of the viewer's impressions during the remote viewing session. At TAB A are drawings made by the remote viewer and narrative of the drawings. At TAB B is the target cuing information. Also included is available target data.
4. (S/NOFORN) Post viewing analysis of target indicated the viewer had little or no correlation. The viewer's attitude was positive. The viewer understands his "memory noise" problems as overlay to the target information. Training objectives were not achieved during this session due to the viewer's lack of discipline in verbal and mental processing.

NOT RELEASABLE TO FOREIGN NATIONALS

~~SECRET~~

~~SECRET~~

TRANSCRIPT

REMOTE VIEWING SESSION 862

#66: This will be a remote viewing session for  
0900 hours, 17 February 1982.

Relax, relax, relax and concentrate, concentrate  
and focus solely and completely on today's target.  
Focus solely and completely on the target for today,  
17 February 1982.

26 degrees, 01 minute, 00 seconds North  
102 degrees, 50 minutes, 36 seconds East

Focus, focus now on the target and describe the  
target to me.

#63: Broad picture, flat, many hills.....

PAUSE

#66: Describe the topography to me.

#63: Flat, yet many hills, rolling, rolling hills..... ✓

#66: Now, focus only on the target. Free yourself to  
move over the target only target of interest, and  
describe the target to me.

PAUSE

#63: I see an inverted tunnel...white, round, narrow  
...flat on top, U shape bottom, dark at the end.

#66: Concentrate now, take your time...concentrate....  
and describe your relative position of observation.

#63: I'm standing at the wide end of the U shape, bottom  
of the U.

#66: Move up and away oblique to the target and describe  
the target to me.

PAUSE

~~SECRET~~

~~SECRET~~

#63: Cylindrical, many arms.....8 arms, 9 arms.....  
that hold up upper edge...dark green.

#66: Describe the area surrounding the target.

PAUSE

#63: Having trouble leaving the target. It's interesting.

#66: Stand on it and describe the area around the target.  
Stand on the target and describe the area around you.

#63: Geometric shapes, patches of trees.....

PAUSE

#63: The target is modern. I'm thinking about a  
domed...openings have curved corners....tall, large...

#66: Describe the present activity at the target area.

#63: No impression.....Appears to be a coliseum.  
Very large.

#66: Tell me of your position of observation that  
you perceive the target.

#63: Ground level outside. Have to stay back to that  
I can see it all.

#66: Put your back to the target, and look away from  
the target and describe your perceptions to me.

PAUSE

#63: Hard to describe. Emptiness...expansive... feeling  
of hills or peaks or something. Feel like  
you could get lost there.

#66: All right. Face the target. Turn now and face  
the target again. Now, float up 5 feet, 10 feet,  
continue now until you can see over the target.  
Move up slightly. A little more over the target.  
Describe your perceptions to me.

PAUSE

#63: X pattern peaked in the middle. Think that's  
overlay. All I get is big, cylindrical shaped  
target. No perception other than that.

~~SECRET~~

~~SECRET~~

#66: All right. I have one more question. At one time you called this a coliseum. I am interested only in the raw perceptions of the target which lead you to that conclusion. Elaborate on those perceptions for me.

PAUSE

#63: It's large. Looks like a coliseum. Empty around it like parking spaces or something. Feels like a place people come to. ✓

#66: I have no further questions but I would like to allow you some time to comment and explore the target. Do so now.

PAUSE

#63: All the feeling inside like a large ring..... May be open in the middle on top. Didn't get that feeling before. Must be a thin roof..... Feels like a lot of little columns all around. Impression something's under it.

#66: Explore.

#63: Feel like some entrances to it are on the second floor. You can park or walk under the outside park. But, it's not like that all the way around. That's all.

#66: Very good. Let's prepare to draw those perceptions which you have had. Remember all that you have perceived so that you may draw those perceptions.

~~SECRET~~

TAB

~~SECRET~~

REMOTE VIEWING SESSION 862

(DRAWING NARRATIVE)

#63: Okay. My drawings. Drawing number 1 was the very broad perspective I got, the very first thing I got, and it was a large, it's kind of hard to describe when you say a flat and hilly area at the same time, but it was a very flat plain type area that has a lots of little hills ...some sort of convolutions of some sort. I really don't know exactly what it was. Looked like a bunch of small hills.

#66: And, did you perceive foliage on these hills?

#63: There was some sort of texture to it. It could have been foliage. It could have been small brush or, or trees as though they were seen from a very high altitude.

#66: Do I understand you to say that you did not perceive any individual trees or grass?

#63: No. If it was, it was very dense.

Drawing number 2 is the overhead view of the target that I said looked like a coliseum. The center area here is raised slightly higher, and I'll show that better in my next drawing, and it seemed to have eight or nine alarm sticking out of it. And, how they are attached to it, I really don't know as you will see in the next drawing.....I didn't even try and depict them attached to the building anyway. Because, I don't know how they were attached to it.

Drawing number 3 is a side view of it. It shows a slightly raised domed area in the middle and the actual, what I call a coliseum itself.

And, drawing number 4...this is sort of an oblique view of it, and it doesn't correlate with drawing number 3 ...and I've drawn some sort of a walkway or something coming up from two sides of it and this is the walkway I described coming up to the second floor or to a higher floor on the coliseum. I thought you could walk under this or park under it or something like this. And here is the domed area again in the middle or the raised area in the middle. Now this raised area, when you gave me time

~~SECRET~~

~~SECRET~~

to wander I went inside and I guess I should draw a number 5 which I will and I will describe it as I draw it, is the inside feeling of it.

The inside of the coliseum had a very hollow feeling in the middle as though it were a donut or something and nothing in the middle. And, I had the feeling of many small columns inside of it. As though it was several floors of stands or something for spectators to view it from. And, I had an open feeling in that raised area. As though that might be some sort of a thin roof to allow sunlight or something through or maybe this area is, in fact, not even there. Maybe there was nothing there. Maybe it's just raised up here but open in the middle.

#66: Okay. Now, as to this choice of word, the coliseum, I asked you to elaborate on that a little bit and why did you choose the coliseum. What was the raw data that you perceived which finally registered in your brain as a coliseum.

#63: Well, the thing that made me say coliseum is because I'm from Hampton, Virginia and they've got a big coliseum there. And, I saw this thing although it didn't resemble the coliseum in Hampton. I saw it, and I felt like I was standing outside the coliseum. It looked like a big, white brick, or white concrete structure. It was very tall. It was very open around it as though it might have been a big parking area. I just felt like I was standing outside of a coliseum.

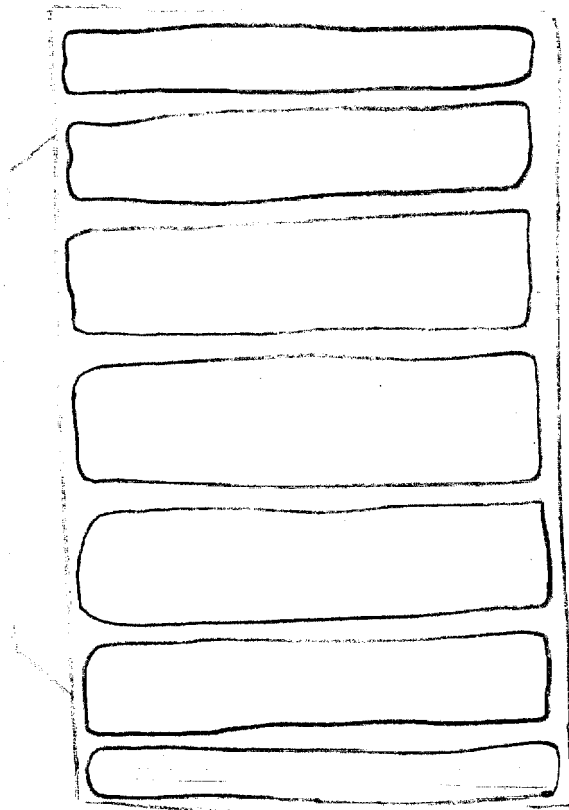
#66: Okay. From the perspective of a remote viewer, those are the things I would like to hear from you. Tall, white, cement structure, rounded as opposed to the word coliseum.

#63: I understand that. I was rushed with coliseum.

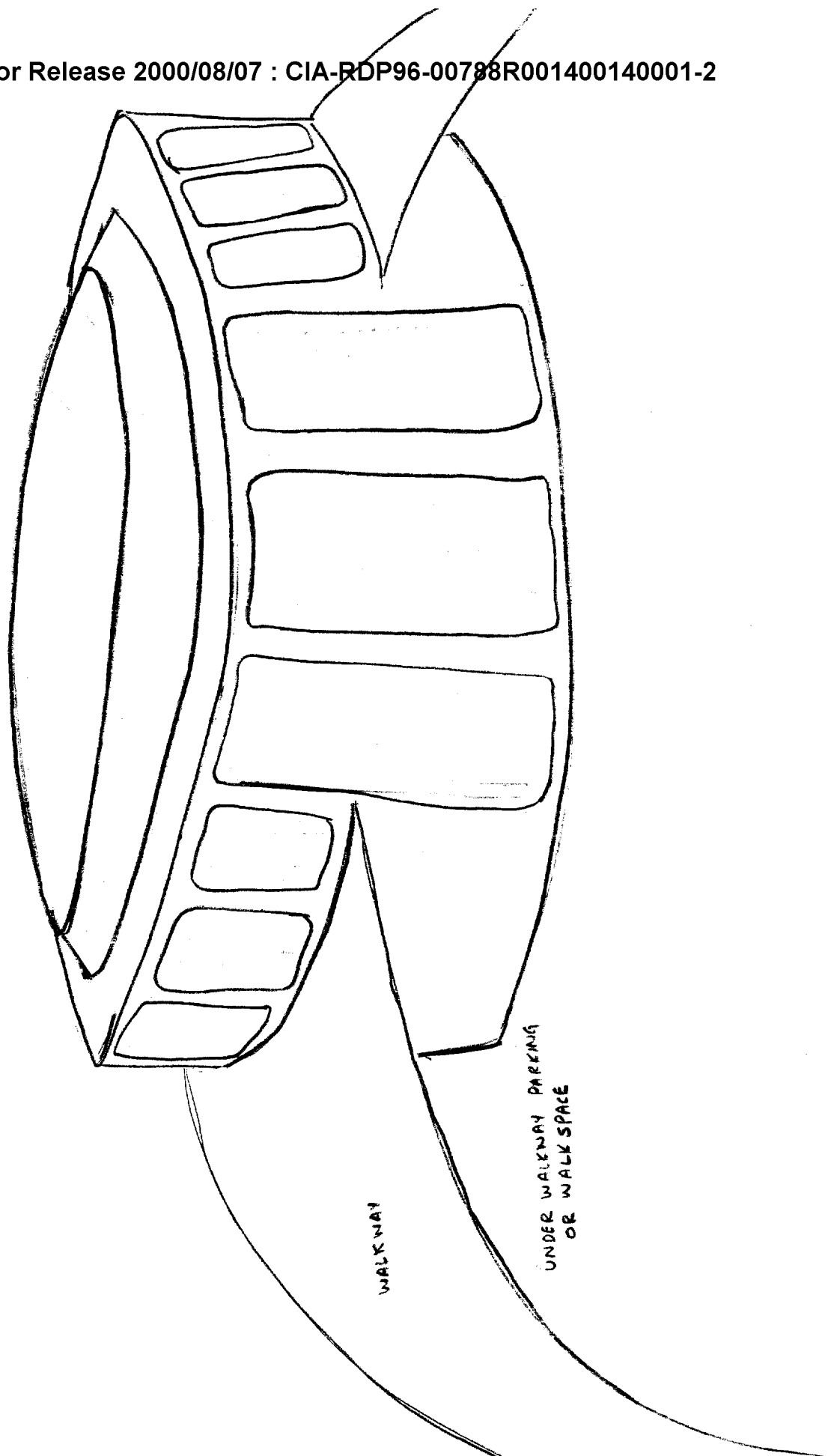
#66: I understand what you are saying and that's fine. Understand what goes on in your brain and you try to compare the perceived data with known data. If the target is something that you've never seen before, and don't know what it is, your brain is going to try to make it look like something that you have in memory. So, we want to be very careful not to access the memory, and turn the target into a memory as opposed to what the target is. On the other hand since I don't know what the target is, it may very well be a coliseum. But, I don't know.

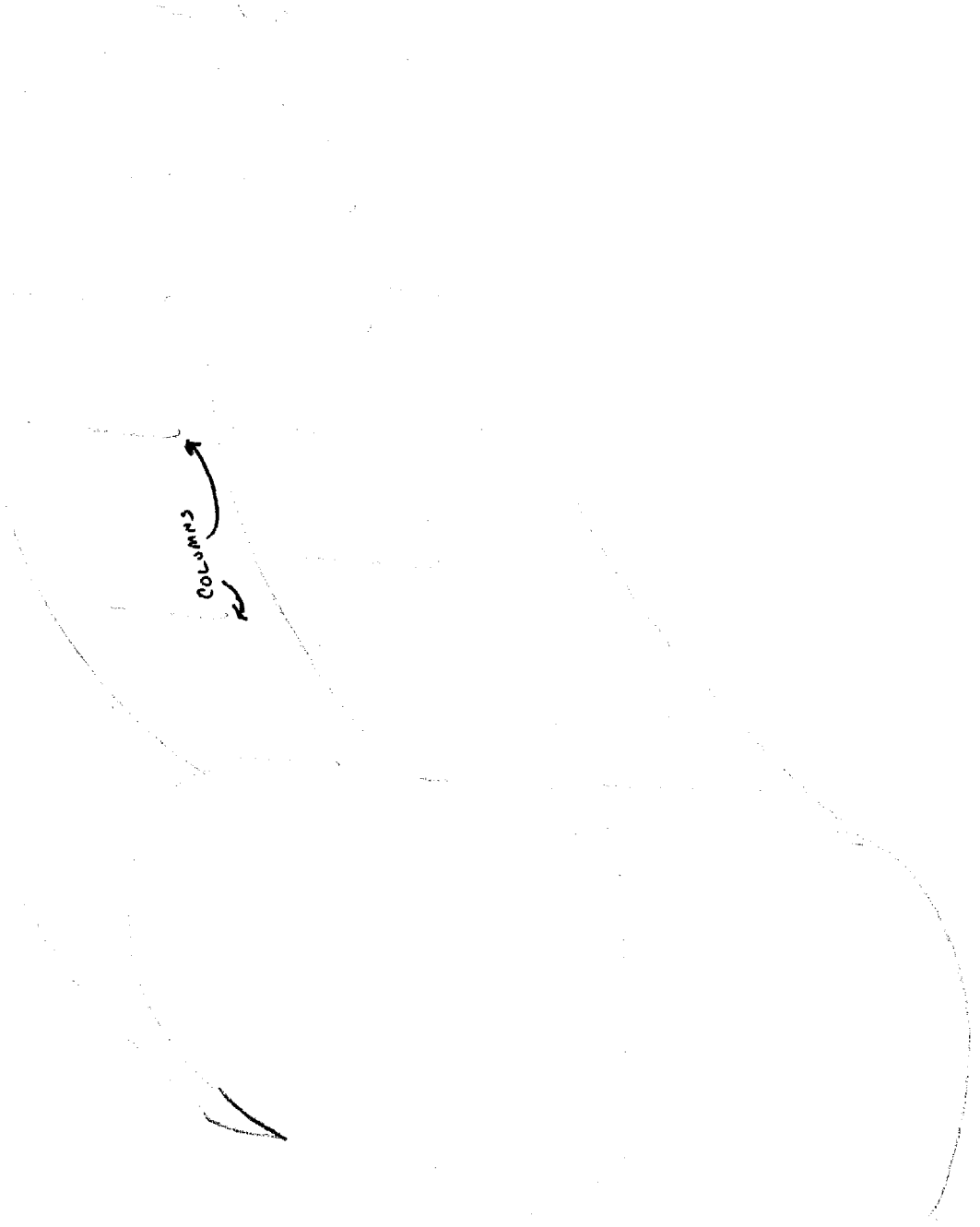
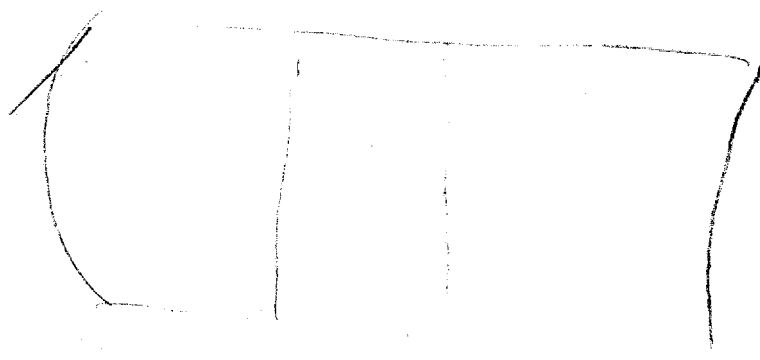
~~SECRET~~





PARKING ?



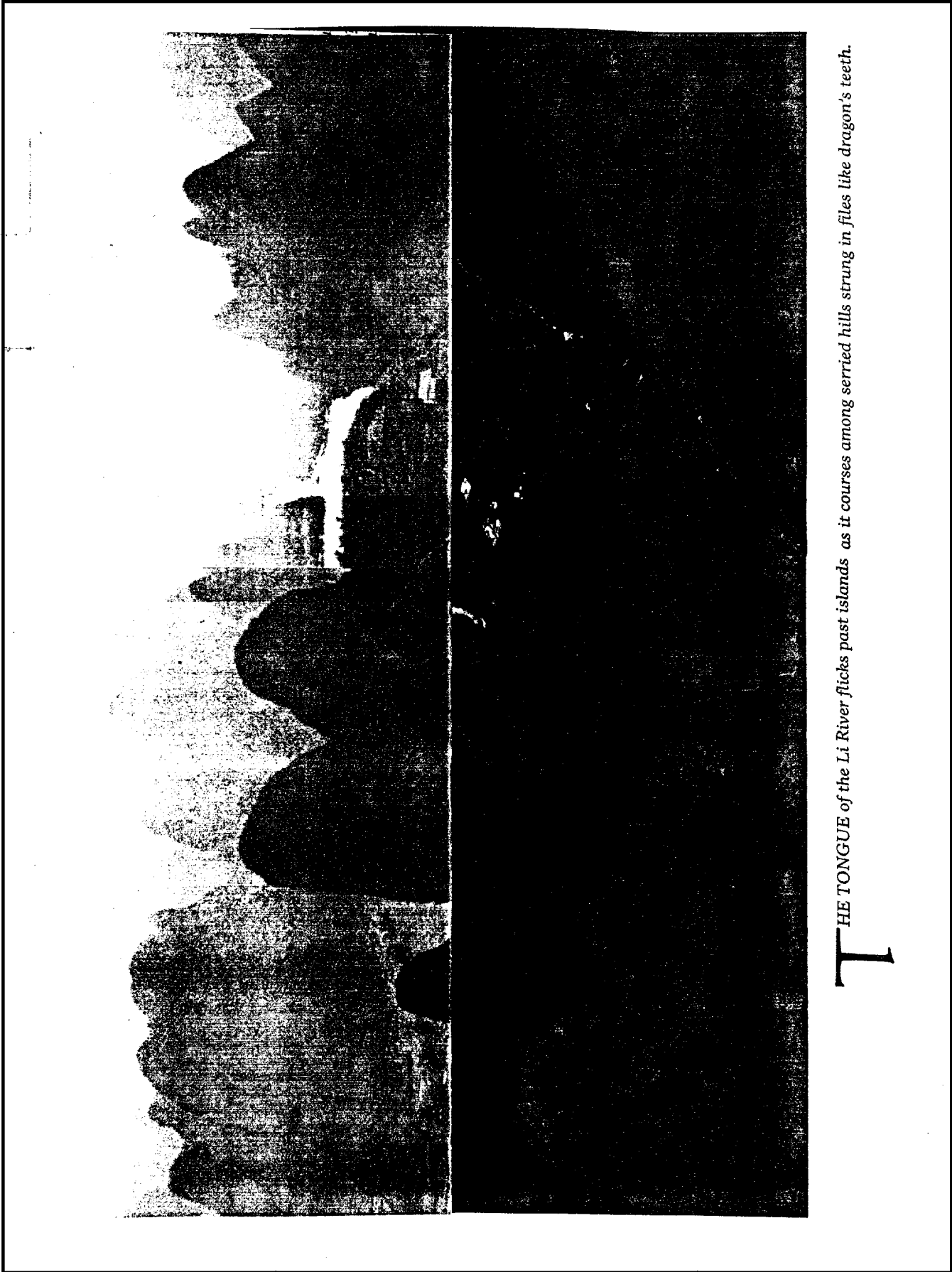


**TAB**

# LI RIVER AT CITY OF GUILIN CHINA

CPYRGHT



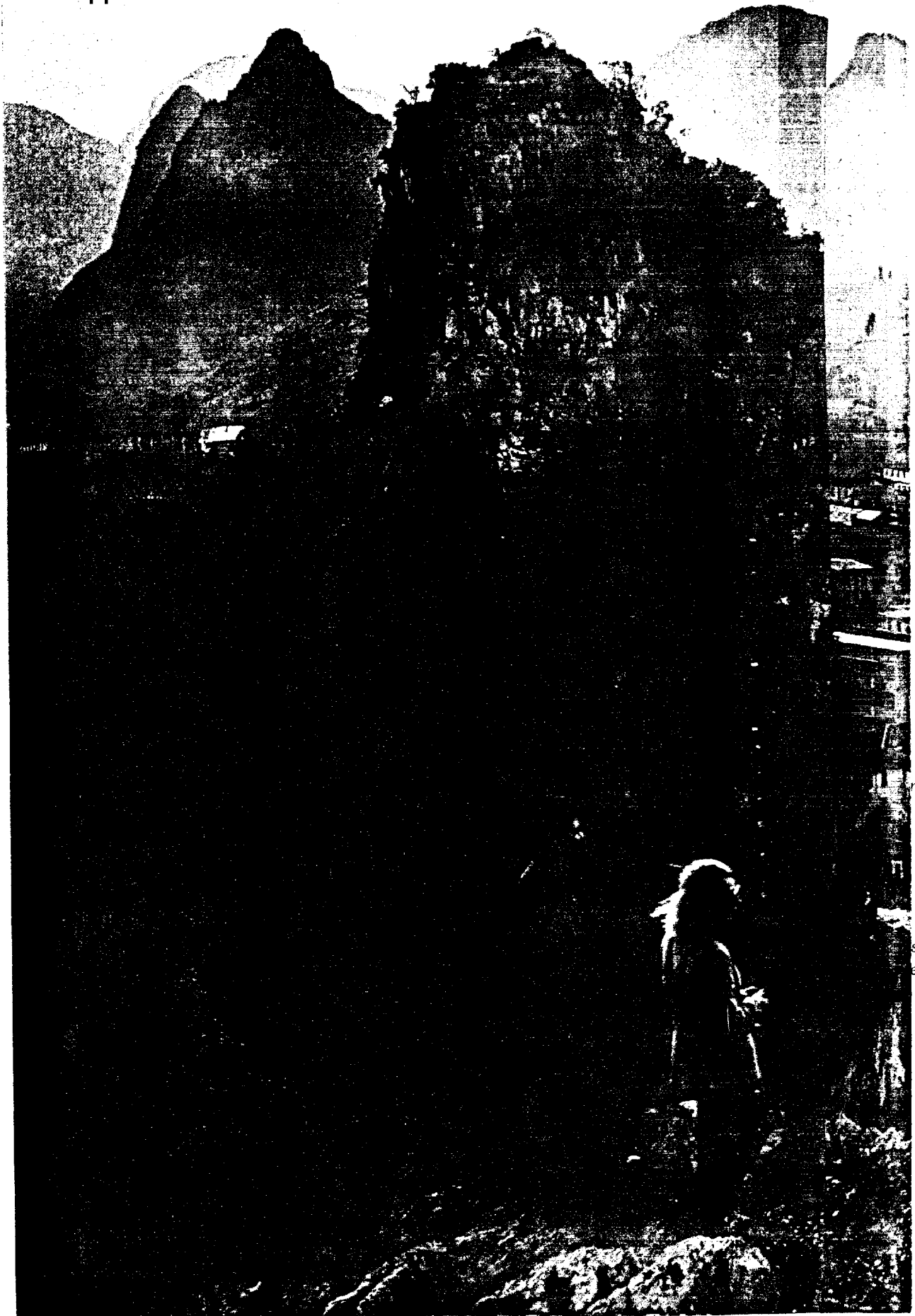


**T**HE TONGUE of the Li River flicks past islands as it courses among serrated hills strung in files like dragon's teeth.



**A** FAMILY CREW poles a cargo sampan against the current of the winding Li River. The large bow windlass is used to winch through rapids. The Li has been part of a river network

Approved For Release 2000/08/07 : CIA-RDP96-00788R001400140001-2



Approved For Release 2000/08/07 : CIA-RDP96-00788R001400140001-2



26° 01' 00" NORTH

102° 50' 36" EAST

(THESE COORDINATES MAY BE OFF  
BY 5-10 KMES; BUT TOPOGRAPHY  
IS OF EXTREME INTEREST AND THE  
SAME THROUGHOUT ONLY THIS AREA)

