

~~SECRET~~

ORCON/NOFORN

INSCOM

GRILL FLAME

PROJECT

SESSION REPORT

CLASSIFIED BY: Director, DIA
REVIEW ON: 30 Apr 99
EXTENDED BY: Director, DIA
REASON: 2-301-C(3)(6)

~~SECRET~~

GRILL FLAME

~~SECRET~~

SUMMARY ANALYSIS

REMOTE VIEWING (RV) SESSION IX

1. (S) This report provides documentation of a remote viewing session conducted for the purpose of orienting a remote viewer to the protocol which will be used in the remote viewing training program at Stanford Research Institute (SRI), Menlo Park, California.
2. (S) The target impressions related by the remote viewer showed some target correlation in a few cases. On the other hand, several of the target impressions and viewer drawings did not relate to the target at all. The remote viewer appeared to be very relaxed during the session. Prior to the beginning of the session he stated that his sister was near death and that he was unsure whether or not he would be able to concentrate. He was provided the opportunity to cancel the session but he wanted to continue.
3. (S) The protocol used for this session and which will be used in later training is detailed in the document, Standard Remote-Viewing Protocol (Local Targets) by Harold E. Puthoff and Russell Targ, November 1978.
4. (S) Following is a transcript of the viewer's impressions during the remote viewing session. At TAB A are drawings made by the viewer reference his impressions of the target site. At TAB B are photographs of the target site. At TAB C is a post session interview.

~~SECRET~~

~~SECRET~~

TRANSCRIPT

REMOTE VIEWING (RV) SESSION IX

TIME

#66: This will be a remote viewing session. (Edited for security.)

PAUSE

#66: Okay, #36, its now time to relax; expand your awareness. #1 and #20.5 have arrived at and are observing the area. Look at the target with them and describe the area to me. (Edited for security.)

PAUSE

#36: It doesn't make sense. I see a black or white ladder coming straight vertical and curving at the top on the right of my view.

#66: All right.

#36: I see a cluttering clump and then to the left. It don't make sense because what appeared to be a shadow of the ladder was also white.

#66: Don't try to make sense; just describe what you see. Just the raw images.

PAUSE

#36: I see a portion of a big circle. It appears to be overhead in front of me. I don't know the scale. It appears to stick down from; it appears to stick down about the same distance it is wide. And, in which direction . . (not audible) . . .

#66: Okay.

#36: Ah. This appears to be patterned. Ah. . . . Now its gone.

PAUSE

+04 #36: Okay. Pure garbage. Ah . . . On the right where the ladder was, the lower right hand corner of this thing was a lily like a jack-in-a-pulpit facing to the left.

PAUSE

~~SECRET~~

~~SECRET~~

#36: Must be one hell of a scene. (not audible)

PAUSE

+05 #36: Okay. On the left portion of the scene, and I don't know the scale; I only see a portion of it; its shiny. It looks like the handrail of an escalator. Except it was coming at me in the horizontal plain rounding off about two feet to my left.

#66: Are you outside or inside?

#36: Well, it could be inside.

PAUSE

+06 #36: I . . . I . . . again. I, above that, looking slightly to the right, I . . . I really don't know what it is. I saw something that's shaped like the crinolins of a tannish, buff, maybe pink dress. Lots of bell-shaped -- I mean lots, like stacked, like the stacked crinolins. That's gone. . .

#66: You are doing very good. You are describing shapes to me. That's very good.

+08 #36: That's all I'm seeing is garbage shapes. Garbage shapes. . . I . . . there's something wrong. Somethings wrong, I just can't see all of anything. I saw something I recognized very, very. . . however it is shown straight ahead of me but out of scale. Much larger than it should be. I saw the portion of a galvanized bucket. The seam was towards me. I could see the bail going into the side and just disappearing. I could see where the bail had hooked. Its garbage. There's just all kinds of stuff flying around. Not flying but just coming and going. It doesn't make sense, but I saw a tined garden rake on my left; tines facing to the right. And, about a foot an one-half of the handle. And, there was green on the handle. On the tope of the handle. I can see the ash color of the handle but ah

PAUSE

#66: Just relax and let it come.

#36: Let it come. Hell, you wouldn't believe half of it.

#66: Just describe what you see.

~~SECRET~~

~~SECRET~~

#36: You don't want it. There's a plastic Santa Claus mask lying on something on my left. Now that don't make sense. I see a portion of a sculptured - on my left - its off the floor - a sculptured, rust colored - rug, is what it looks like.

#66: You don't have to tell me what it is, you just . . .

#36: I don't know what it is.

PAUSE

+10 #36: Okay, it seems stupid though. I prefer to talk in ah . . . shapes with picture frames. . . . we can talk about forms. Ah, half way up the right side of the frame, just inside the frame are pipe shapes, tubing shapes, three of them have a bend on them that ah . . . I see one that's (not audible) . . . God, they're sharp; the pictures are sharp . . . Under the buttles, the smaller tubes, there are four of them, they are tied together with twine string it looks like . . . in bundles of about twenty. What's that got to do with Santa Claus?

#66: Don't analyze now. Just tell me what you see. Don't analyze.

#36: Ah. . . its awful hard not to associate. In analysis tell them its garbage. I see a "Y" shaped thing right in front of me. It looks like its two pieces of tubing together. Oh, its sharp.

Ah. . . imagine two pieces of tubing standing vertically side by side. They are stuck together. If you'd take the top of them and peel them apart far enough down you make the shape of a "Y". Now if you leave the same two tubes, bend the bottom away from you; now you've got a "Y" with the bottom facing away from you with rubber tips on it. That is very sharp. . . Its garbage. . . There's nothing like that. . . . Its got a punched hole in it; I can see the dimple. Its chrome.

PAUSE

#36: I wish I could stop thinking what it is. There is a big pipe coming in from (not audible) end of the frame pointing up to the . . just left of center. It is very large in diameter, roughly - I don't know the scale -

~~SECRET~~

~~SECRET~~

I would guess 2 1/2 or 3 feet in diameter but at least its approximately 1/5 the height of frame in diameter. The height of the frame (not audible). Now, the way I see the frame, I'm looking through for what its worth, is antique oak, there are carved oak leaves and acorns in the upper left hand corners. Very attractive. But nice (not audible).

#66: Focus your attention on the target area.

PAUSE

+15 #66: Let yourself move outside the target area. Let yourself go right outside the target area. Back away from the target area, further away, turn and look back down at the target area and describe what you see.

PAUSE

#36: Okay. There's a stack. Like a giant stack standing up. (not audible)
Spokes radiate downward from it, maybe at a 45 degree angle and then they disappear. . . I also cannot see the base of the tube or the stack or whatever it is. It looks like a stack. . . An angle on the top; bicycle spokes. (Not audible). . 45 degrees and downward disappearing.

#66: Is this outside?

#36: It looks like smoke around the bottom of it. Or clouds, or . . . I moved up. . . (whispering) . . I . . . its hard to determine what portion to give you and what portion not to. Only give so much. I gotta go back up

PAUSE

#36: I keep seeing large scale things. I recognize. . . I saw the a. . . . front wheel of the 1980's. I mean a . . . 1890's bicycle. I saw a woman dressed in brown. Looked like she could be from a . . . the desert area of the world I can't see her face.

PAUSE

I know I should find a building, but I can't see one here.

PAUSE

~~SECRET~~

~~SECRET~~

+20 #66: Okay. . . . Now its time that you . . . think about drawing some of the things you've told me about. . . . talking about drawing. #20.5 and #1 have left the target area now. So that when you feel comfortable that you review the images in your mind, just sit up and draw some of the things that you saw.

PAUSE

#36: Okay. . .

PAUSE

#36: I wish I could rest like at night Oh God, the images are still coming.

#66: While you draw, you can review the images and . . .

#36: (DRAWING). . . First, I saw. . . then there was a white. . . exactly like it going away from it. That was first. This came up second. . . .

#66: Good.

#36: Now that was a don't even know if these are same scene, because when this came on, this disappeared. . . . I was looking at both from the bottom.

PAUSE

I kept. . . . I saw many, many pipes in different configurations. . . . Some of them looked like they were the same way, this angle. . . . And they had a cover over them. Then I saw a bundle of three and they were bent. . . . Then they seemed to get corrugated. The stacked up a I first saw them on this angle and then they were coming at me from this way and then there was a thing in the end of the bundle, they were going away from it that way. . . This big pipe had a band around it. . . . (not audible). . . This thing, I couldn't see below, down here. . . I missed the first drawing. . . which seemed to be up this way. I was looking at it from a (not audible). And it had . . . I couldn't see inside of it. . . I don't know what it is. . .

PAUSE

~~SECRET~~

~~SECRET~~

#36: Ah . . . (DRAWING) . . . It looked like the . . .
ah . . . very high rise bicycle wheel. . . Back over
there, I saw (not audible). . I described a bucket.

PAUSE

Um. . . there's a woman with a maroon and this
was pinkish . . . No, . . . that's it.

#66: Okay, that's fine.

#36: It makes no sense.

#66: Put a Number Ten on that last page there and that
will complete it.

#36: Okay.

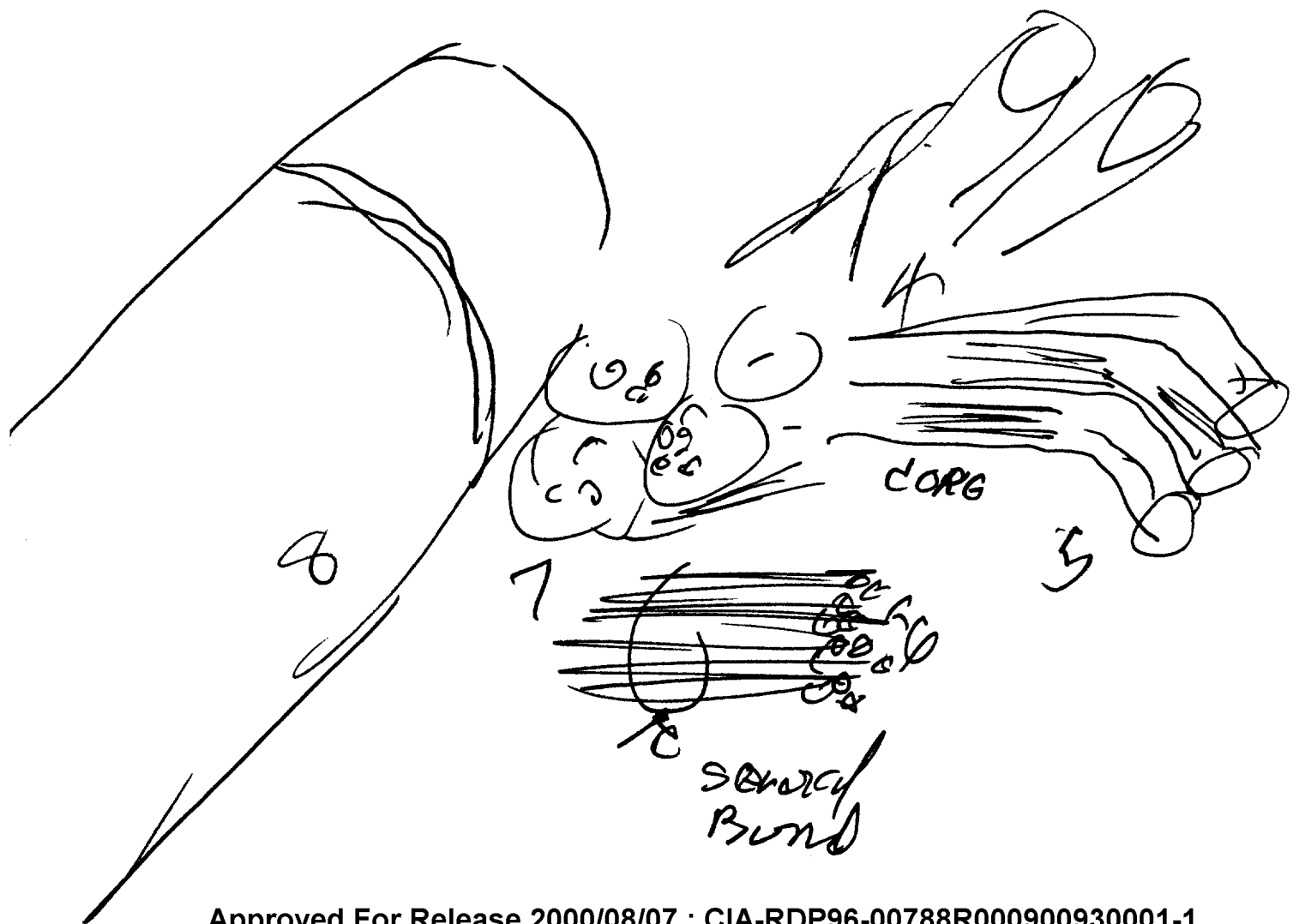
#66: Okay, good. Well, I think we had a pretty good
session.

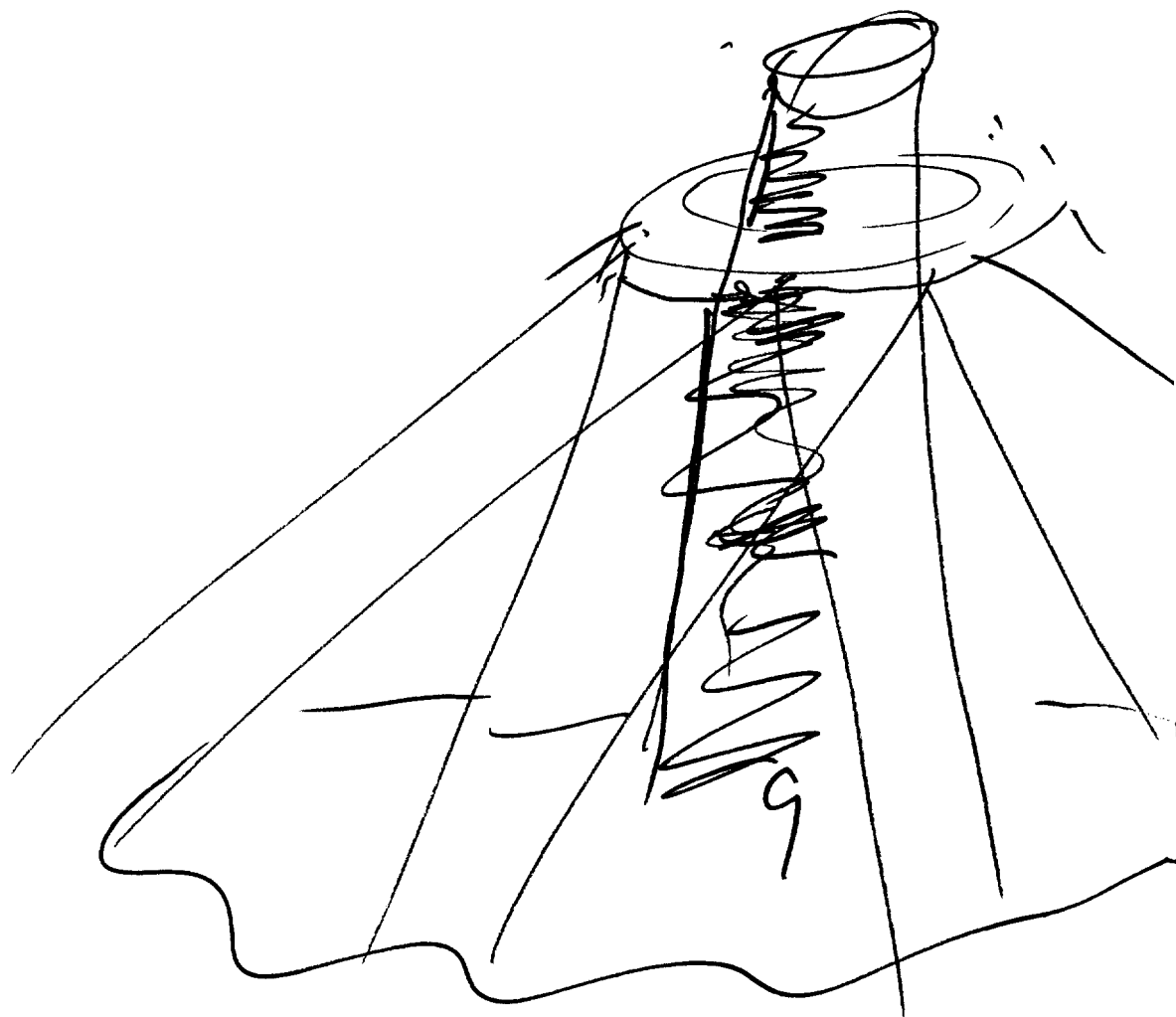
#36: Gosh, I don't know. It seemed like a sheer disaster
to me.

~~SECRET~~

TAB A

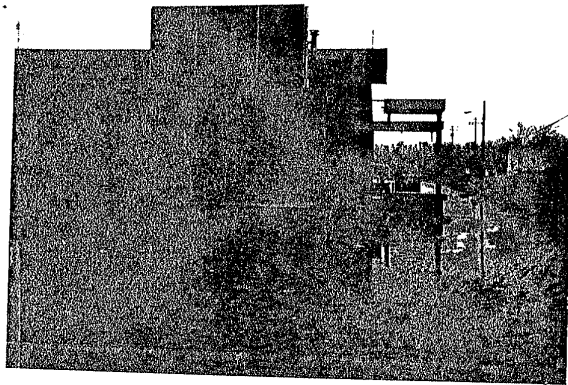








TAB B



TAB C

~~SECRET~~

POST-SESSION INTERVIEW

REMOTE VIEWING (RV) SESSION IX

1. (S) Post-session interviews are conducted after the completion of a session to provide the selected remote viewer with the opportunity to express himself concerning his viewing experience.
2. (S) During the post-session interview #36 stated that he did not think that he had "hit" the selected target. He did feel, however, that he had hit another target which he later discovered quite unexpectedly. This site was located 2-3 miles due south of the selected target. This site was a shopping center (as was the selected target) but the parking lot was occupied by a traveling carnival. The equipment associated with the carnival shows a striking resemblance to #36's target images. Photographs of the carnival site are attached hereto. #36 discovered the carnival site by chance driving to work. When he saw the ferris wheel he experienced an emotional jolt. This jolt was so intense that it caused him to drive to the carnival site later that day. #36 has strong feelings that it was the carnival site that he "hit" during his remote viewing session.
3. (S) #66 and #36 related well during the session. They seem to be developing a rapport conducive to the remote viewing experience.

~~SECRET~~

