

~~SECRET~~
ORCON/NOFORN

INSCOM

GRILL FLAME

PROJECT

SESSION REPORT

CLASSIFIED BY: Director, DIA
REVIEW ON: 30 Apr 99
EXTENDED BY: Director, DIA
REASON: 2-301-C(3)(6)

~~SECRET~~

GRILL FLAME

~~SECRET~~

SUMMARY ANALYSIS

REMOTE VIEWING (RV) SESSION XIII

1. (S) This report provides documentation of a remote viewing session conducted for the purpose of orienting a remote viewer to the protocol which will be used in the remote viewing training program at Stanford Research Institute (SRI), Menlo Park, California.
2. (S) The target impressions related by the remote viewer were highly analytical and showed little correlation with the target site. Several of his more graphic impressions did show some target correlation. But whenever he attempted to analyze or label his images, "noise" would interfere and he would relate false data. The remote viewer realized his error during the post-session visit to the target and is anxious to try again.
3. (S) The protocol used for this session and which will be used in later training is detailed in the document, Standard Remote-Viewing Protocol (Local Targets) by Harold E. Puthoff and Russell Targ, November 1978.
4. (S) Following is a transcript of the viewer's impressions during the remote viewing session. At TAB A are drawings made by the viewer reference his impressions of the target site. At TAB B are photographs of the target site. At TAB C is a post-session interview.

~~SECRET~~

~~SECRET~~

TRANSCRIPT

REMOTE VIEWING (RV) SESSION XIII

TIME

#28: Okay. This will be a remote viewing session.
(Edited for security.)

PAUSE

#28: Okay, #6.5 and #31 are at the target location.
They are observing the target. Look at the
target with them. (Edited for security.)

PAUSE

#1: I'm not getting anything very clear yet.
Starting to get flashes of light.

#28: All you have to do is describe the area to me.
Let it focus; let it come by itself; describe
the area to me.

#1: I see a . . . like a . . . its like a cover. . .
like to my front. . . and over my head . . .

#28: Okay.

#1: And its long. . . kind of goes away. . . and
kind of narrows at the far end. It only appears
to be supported by . . . the right side and not
by the left. Its . . . a . . . I don't. . . its
not fastened to anything. Its just supported
over my head.

#28: Okay.

#1: Its got a curve to the bottom side. . . where
the support meets the overhead. . . the cover
part.

#28: Okay.

#1: There is not, I don't sense any . . . any real
complexity to that curve. Its just a nice smooth
flowing curve.

#28: Describe the color to me.

~~SECRET~~

~~SECRET~~TIME

#1: Yellow. Definitely a gold or yellow. . . flecks of brown. . . I get the sensation that its metal. . . but its not all metal; but I get this sensation that its metal, primarily metal. It has a very simple edge to it. Ah. . . Let's see. . .

+03 I'm having trouble seeing anything to the right of it. As if I'm standing on the end; on a corner looking down, idling through it. Under it. There's what appears to be asphalt to my left. But there doesn't appear to be much of a sidewalk or whatever is under this cover. It might not even be a sidewalk. I don't have the feeling that its. . . that its. . . that solid.

#28: Okay.

#1: There is a . . . there's. . . what. . . appears to be. . . Oh, God, this is hard to describe. There appears to be a . . . a . . . very. . . a . . . there's like entrance-ways on the right hand side. Behind the . . . I know before, I said there was nothing fastened to it, but there's like . . . a . . . entrances to doors that are back away from the cover. To the extreme right. And they get smaller as they progressively fall away.

+05 And now I . . . I lost that . . . There's nothing there right now. . .

I don't. . . I don't see. . . I. . . I'm looking down a wall now; its on my left side. Its to my front left and there's windows; what appear to be windows or openings that are side by side, not very high, but in the extreme high portion of what appears to be the wall. Going down my left and a funny design to the front edge of that wall up over the windows. And where it fades away to the front of me I sense that what I was looking at before is fastened to it. But I . . . its not very clear how. Its a very tall object. And its right next to me on my left. Very tall. Its not round; its got an angular shape to it. Its not very thick. Not very thick at the base. But its very high. Ah. . . I'm standing in a . . . standing in a street. Its definitely asphalt I'm standing on but is not. . . its not a regular road. And, its not a parking area. Its definitely an

~~SECRET~~

~~SECRET~~

open asphalt area and its not used. . . generally,
by cars. . . or vehicles.

+07 I sense there's a wall on my right also, but
a very low wall. . . And I feel as if it . . .
if I were to step over it, I would fall. That
it drops down lower than the height at which I'm
standing.

+08 I'm getting a lot of clutter right now. Trying
to. . . trying to visualize through it. . . I see
curtains, green curtains. Or a curtain-like
device that's sort of a wavy type wall in front
of me. And I'm seeing that . . . It does not
appear to be anything I'm looking through to see
that. Try to put too much (not audible).

Now there appears to be a small row of green
undefineable shapes directly in front of that
running left to right or right to left. However,
you want to look at it. Not very high. Knee high.

#28: You're doing very well.

PAUSE

#1: There's a . . . behind the tall object, I previously
described, there's a . . . an overhang. And the
supports to the overhang are angled out. They are
not straight up and down. They are angled out.

PAUSE

+10 #1: Ah. . . I keep . . . I keep wanting to say this
is a restaurant, but I don't want to analyze it.
I got the feeling its used for more than just that.
Definitely, I have the sensation of food cooking
though. You know, not your supper-type meal. But
considerable amount of food cooking. I also get.
. . . a dark. . . although multi-colored brick
pattern but its only in the lower portion of the
. . . lower portion of the entrance-ways or the
things that I described as being under that over-
hang. . . Its hard to visualize the upper edge of
the . . . of the tall object. . . but it appears
to have a . . . oh. . what resembles a part of a
bolt of lightening only in a very curved form. Its
thick at one end and thin at the other. . . It
tapers away.

#28: Are you outside or inside?

~~3
SECRET~~

~~SECRET~~

#1: I'm outside. Before I think I was partially inside. I felt like I was somewhere inbetween inside and outside. Inside. . . I get the sensation of a long counter, but its not a food counter and that's what's confusing me. I have a tremendous impression of food cooking but there's no food counter. There is a long counter. . . . The walls are wood on one side and plaster on the other side of the room. The carpet is a. . . a tan. . . light color.

#28: Okay.

#1: I get the sensation that it is carpet. Definitely carpet. . . Ah. . .

PAUSE

#28: Do you see any people?

+12 #1: I see one. . . man. Its definitely a man. He's behind the counter.

#28: Describe him to me.

#1: 38 to 40 years of age. Hairline starting to recede. Some gray or maybe not gray, wait a minute, light brown hair, no gray. Streaks of light colored hair in the brown hair. He's wearing a . . . he's wearing a suit. Blue, light blue shirt. Ah. . .

#28: Describe his activities.

+13.25 #1: His activity. He's writing. Behind the counter, there's a lower counter and he's writing. He's writing on a predesigned form. #6.5 and #31, are right now, directly to the front entrance-way of where that counter is. To the left front. They probably can't see the man from where they are at . . . I'm back outside again. I get a . . . the . . . also on the overhang behind the tall object . . . I get the impression that the overhang is slanted. Like a slanted roof. Although I don't . . . sense any shingles or anything. But its just a slanted roof. . . Ah. . . He's writing on a pre-printed form. And he's not writing very much on a pre-printed form. . . Just checking blocks and things. Ah. . . .

~~SECRET~~

~~SECRET~~

#28: Let yourself go back outside the area. You have been very close to the area now. I want you to move back away from the area. Wherever you're comfortable away. Either at street level. . . or up above at an angle. . . Move back away from it. . . Let it fall into perspective. Back away from it. Describe to me the area in total.

+15 #1: Ah. . . The building stands. . . I'm about the height of the tall object. . . I'm about 300 meters back. . . ah, approximately 25 feet off the ground. I'm looking diagonally across the building. . . on the left is a fast-food which would be. . . 70 meters from the front entrance-way to the object. The building.

#1: And the fast-food is red and white. I don't know what kind it is. I get. . . I sense something like a chicken place, but I don't know.

#28: Just describe what you see.

#1: Yeah. Ah. . . directly to the front of both of those buildings is a small. . . access way but not wide enough for two cars. . . I sense a very high curb there. I think that might be the wall that I described earlier. That if I slipped off that I would fall. I sense that there is a very high curb there. I see no telephone lines. To the right I see. . . to the right I see a large block type building. . . Just very plain and general in appearance. Windows all the way down one side. The side facing the road. Entrance way is in the corner of the building. It has a flat roof. Directly beneath me is . . . is the main road. Fairly heavy traffic. I don't. . . I sense a light, signal light or something to my rear left. . . But I don't. . . Across. . . at the corner of the signal light, the fast food is on one corner and diagonally across, under the signal light is a gas station. Blue and white gas station. I'm going to go straight up. . . the roof is an angular roof on the building that I was originally looking at but it was. . . its not a steep angular roof. 20 degree angle maybe. Three vents down the center. A very light colored roof. . . . I sense there's an alley that goes

~~SECRET~~

~~SECRET~~

down the right. . . side of this building.
As I'm looking from a . . . side vision of
street. I don't think the entrance-way is on
the main street. Its off to the left facing
from the main street. As is the parking area
. . . Ah. . . There's a round, circular object
. . . I'm back. . . Having trouble finding
where I'm at now. . . There's a. . . a row of
green. . . its a . . . I better leave that for
now, I can't figure where I'm at yet. . . .

#28: Okay, #1. I'm going to take over control. Go
back inside where you were before and look at
the counter. Hold that in your mind. Go back
inside. Go back and get the counter. All right,
you got the counter?

#1: Yes.

#28: Now. We're going to go through an exercise now
'cause its going to be time to draw in a minute.
Look at the counter carefully. . . . slowly,
slowly, back out away. . . back away from it.
Now you're getting away. Now come outside. Now
you're outside and you're looking at the entrance.
Now you're outside again standing on asphalt. Now
you remember everything that you've seen. And
when you're ready its time to draw.

PAUSE

#1: Oh, geez. . . .

PAUSE

+20 #1: Ah. . . I don't know if I said I sensed yellow
before, but I sense a lot of yellow in this
building. And a lot of little squares of glass.
Not very small but two by three feet. And a lot
of greenery in the front of the building. To the
front entrance way. Its almost like its been
deliberately planted there. In the building. In
the wall.

I'm going to do drawing.

#28: Okay.

#1: Get some lights.

#28: Okay.

PAUSE

~~SECRET~~

~~SECRET~~

#1: There's like a there's a slanted overhang. There was like slanted supports in front of it. And I sensed the entrance-way behind that. This is a light colored. . . There appeared to be an area here. . . where there's a lot of green. . . . in this area. . . The counter is directly behind the wall. . . behind the green. I sense two floors. Back here. That's two floors to the building. But I . . . this area is difficult for me to . . . with the overhang and. . . just a second. . . wall (not audible) I sense a roofline. . . Very shallow roof. Ah. . . front of a corner of the building. . . (not audible). Sense the (not audible) glass here. Small windows. Brick down here. . . . Brick here. . . No brick there. . . Vents located along the top edge of the building Alley way behind the building. This was all asphalt. With a very high curb. . . Building here. Fast-food somewhere back in here. Hedge of green. Main road. . . Tall object. . . was here. . . but like in a circle . . . And the lightening bolt. . . was like here. It appeared to be something. . . like that. Ah. . . Looking from the top. . . . I sense this building as being tall object. . . . Building. . . that's not right. . . . Building. This is a secondary, a guess an access road. Street light. Gas station. . . Gas station. Fast-food. Fast-food was . . . shaped . . . doors. . . windows. . . that's funny. . its all windows. . . Something funny about the back roof. I don't. . . Ah. . . walkway. . . Windows. Facing that main building this way. This went out to the access road. And asphalt.

#28: Draw the inside of this for me.

#1: This? There's, before I lose it, there's one other. . . I described a . . . this overhang is not what I described initially. The initial overhang, if you were standing under it, . . .that's not right. . . and looking away. . . .it had supports. . . like this. On one side. . .block . . .something was here and like. . .you went in here. . . they are like recessed doors. . . I can't draw them.

~~SECRET~~

~~SECRET~~

#28: Do you think that has relevance to this?

#1: I don't think so. But it was very, very clear. It might be like. . . it might be a . . . I sense its relevant to this building, but where on that building I don't know. It might be down on the other end. . . It might be this. . .

#28: Okay, don't try to put it together now.

#1: I'm not. I'm doing too much analysis. When I . . . these I'm not sure if they're doors or not. Ah. . . inside. . . this building. . . I sense this as being that part of the building. The other part I. . . its not to clear. I saw a wall in here. And. . . its not right. That is all glass. Behind this glass. . . which is this. . . I saw curtains, green. Doorway. Portico. Large tall object. Counter. Man was here. Two protrudences here. Document here. Or right here. Very dark in this building. This was wood. This was . . . This was glass. Glass. . . doorway.

#28: Where did you see #6.5 and #31?

#1: Here.

#28: Outside?

#1: Here originally. Here when I looked for them. Here originally. And here one other point.

#28: Do you feel as though they ever went inside?

#1: No. They did not go inside.

PAUSE

#1: I don't . . . Tremendous feeling that there was cooking in that building. But I'm not sure if there was or not. It maybe flack from the quick food. This was a. . . mostly red with some white. (not audible) type designs. I sense. . . I really sense yellow when I look at this overhang. The one that I'm not sure where it went. I sensed the color yellow tremendously.

#28: Okay.

~~SECRET~~

~~SECRET~~

#1: I sense yellow in this building, but not that much. I sense, sense brick than anything. This building is white. And not very significant. Its just got a couple doors and windows on it. I don't. . . .

PAUSE

The architecture of this building is probably, ah. . 1940's. This building is much more modern.

I can't think of anything else to add to it.

#28: Okay. How about, just for me, writing in labels. You know, you told me as you went through, waht the colors were and I wanted to let you flow through that but now if you'll write colors and things and what you think they are made of on there. . . .

#1: Yellow. This is light yellow. Ah. . . glass. . That's these high windows here, that's glass. Brick. Red. That's definitely red. This is definitely yellow. White. Roof is white. Glass. Asphalt. Green. I sense this is shrubbery and this is shrubbery. #6.5 and #31 . . . And only #6.5 is here. I didn't . . . see #31. High curb. Street. That's the main street. Alley. Building is plain block. This is bright gold or yellow. Ah. . . curb supports. . . but they are not ornate, they're simple. Simple (not audible). They are just like a . . . I can't tell if there's anything dividing the main support pole from the decorative. . . . curved piece. Its like the curved piece is light aluminum there or something. There's something there that's to add some kind or architectural design. These are entranceways. I take it back, glass and borner. This walkway here I didn't feel like was . . . concrete. I don't know if its on the building that I described, or. . . This is the quick food. I don't know what to call that. Tall object. (not audible) this was the target building. This is a . . . extra building, whatever you want to call it. Alley way. Intersection. I think this street's a numbered street. This one's got a name. Gas station. Blue and white gas station. . . And the pumps are kind

~~SECRET~~

~~SECRET~~

of off set. Kind of at a funny angle to the street. Across here I sense like a . . . a . . . like a wooden structure here. All I can say is its wooden. I don't know if its a house or what it is. Fast-food has got white stripes. Rest of it is red. Even the roof is red. Different shades of red. Maybe red brick. Mixed with redwood; mixed with red stain wood. Dark red shingles. Its shades of red. A lot of glass. Sidewalk. Asphalt. The counter is not. . . its formica. This is wood, this wall. Entrance-way is glass. Real nice carpet. Its like a green-gray front. . . That's green. . . That's heavy. That's glass. This is two stories. But I don't get the feeling for the main part of it. I can't. . There's something funny about the way that building connects there. I can't. . . this is two story . . . But I don't. . . I don't sense that as being two stories.

#28: Okay.

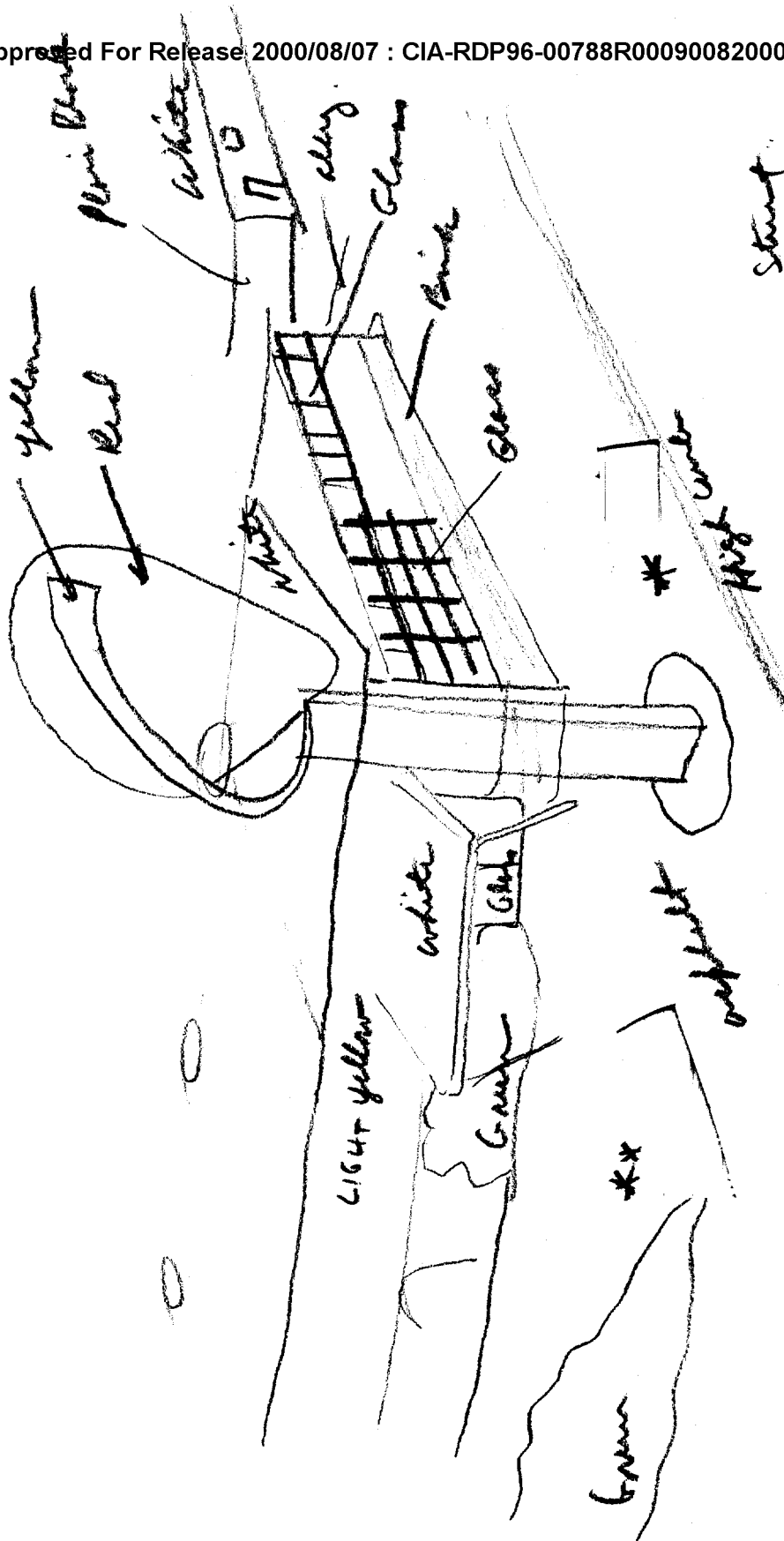
#1: That's all I can think of.

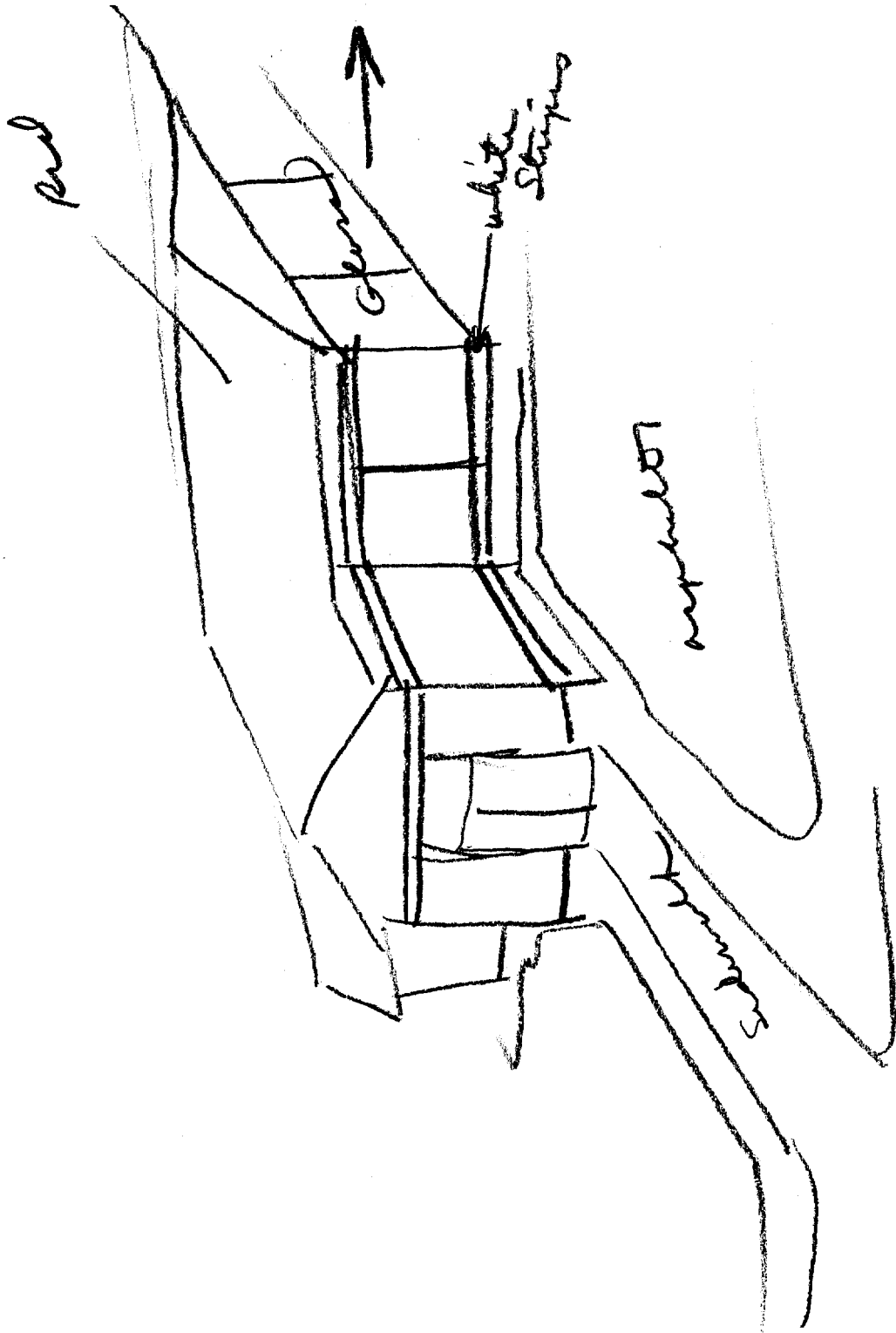
#28: Okay.

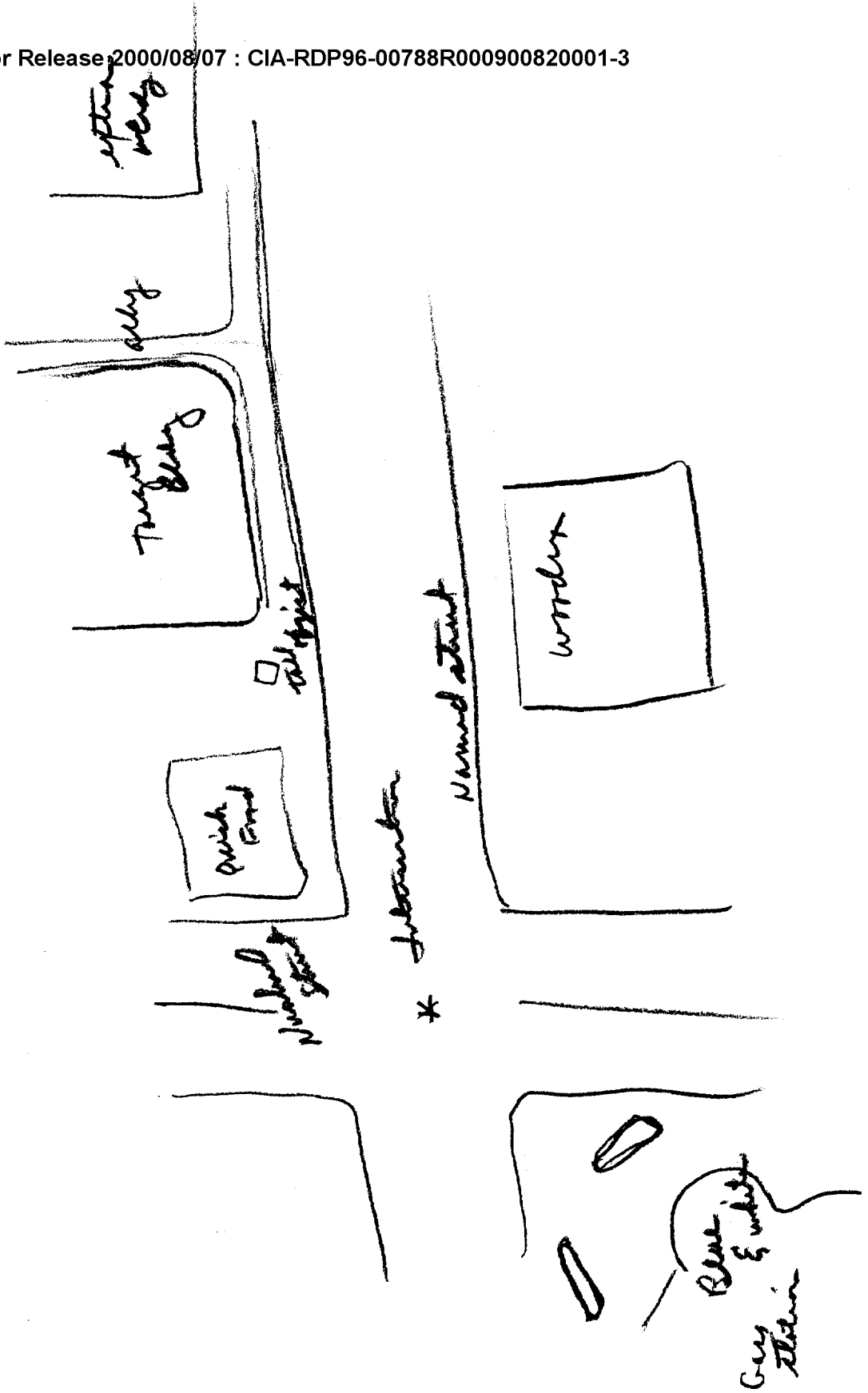
#1: I guess that's it.

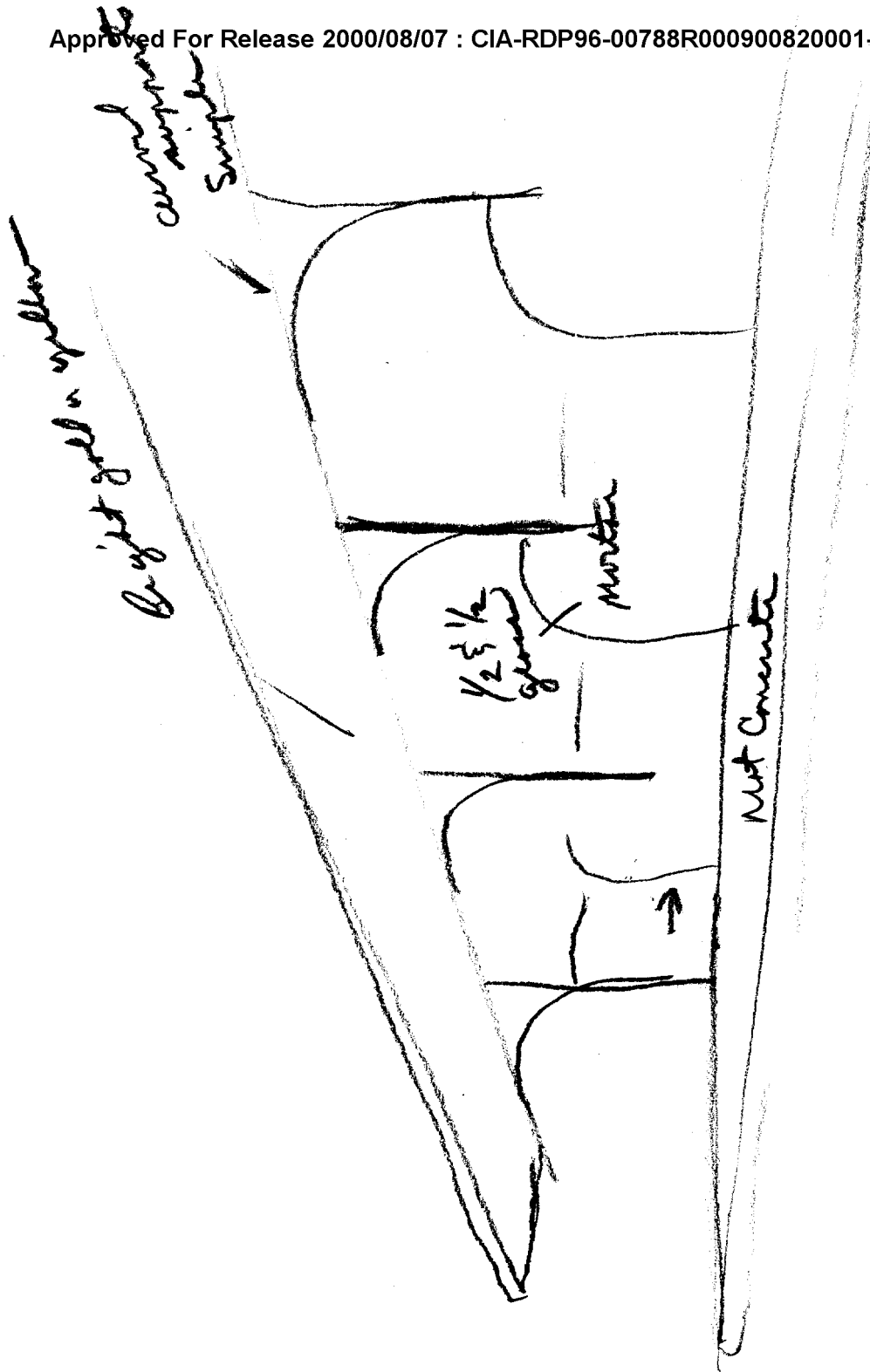
~~SECRET~~

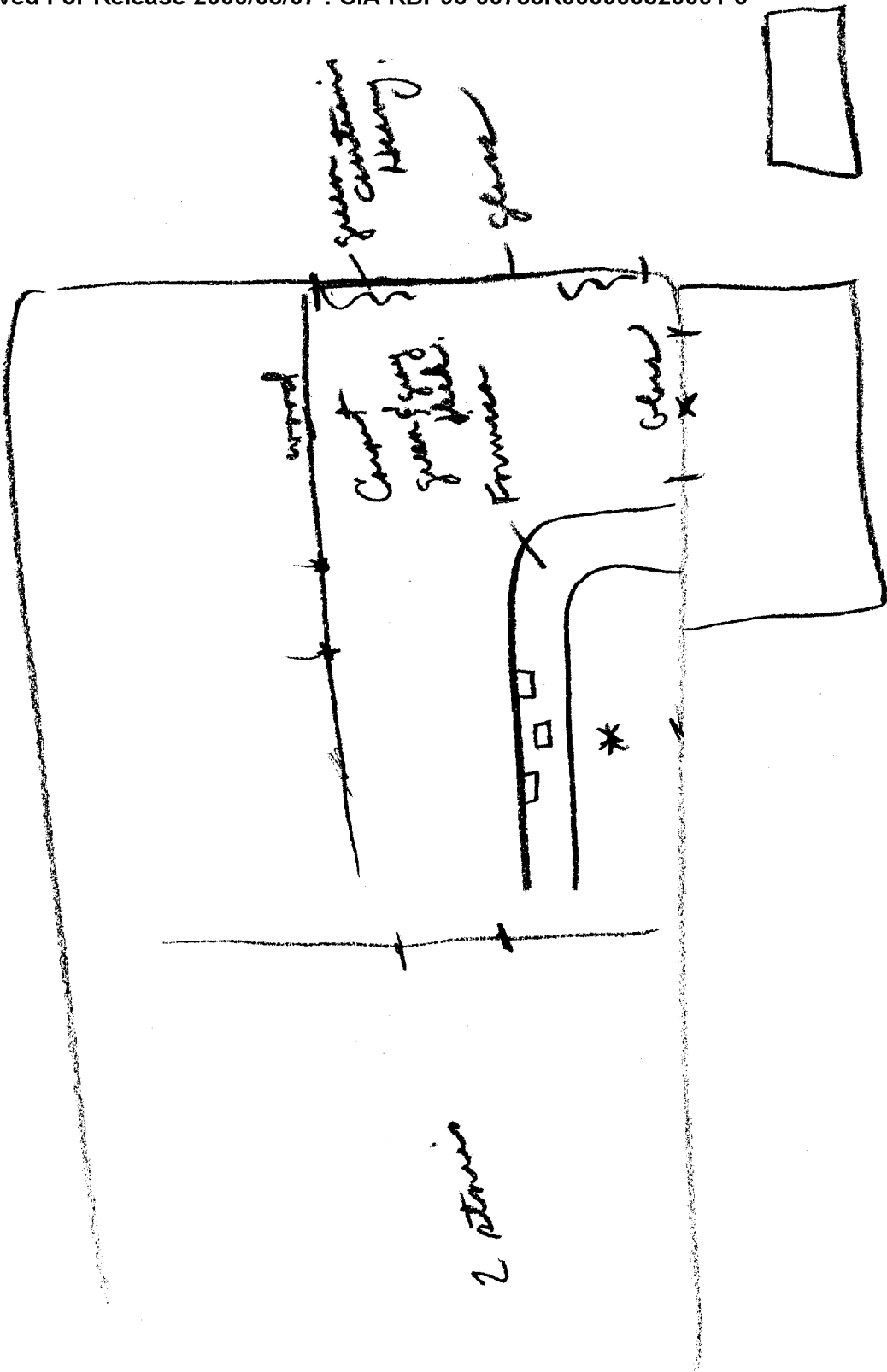
TAB A



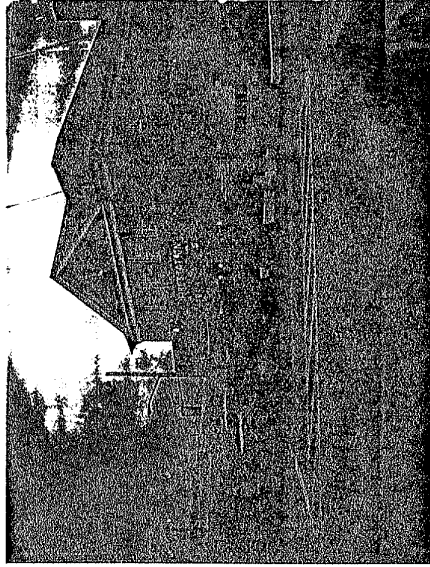
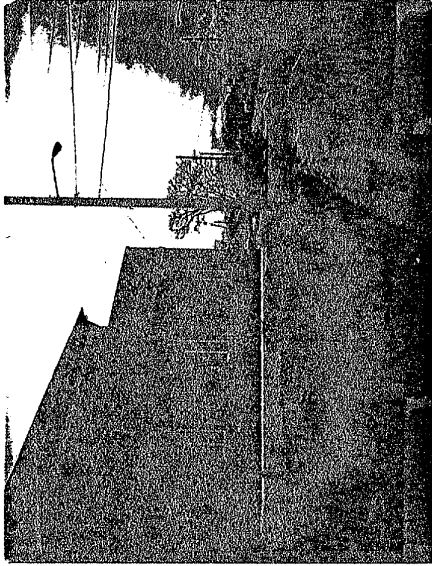


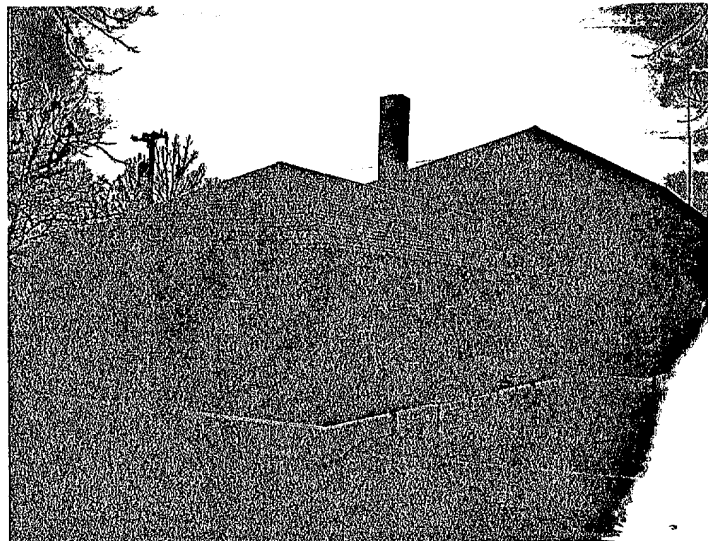






TAB B





TAB C

~~SECRET~~

POST-SESSION INTERVIEW

REMOTE VIEWING (RV) SESSION XIII

1. (S) Post-session interviews are conducted after the completion of a session to provide the selected remote viewer with the opportunity to express himself concerning his viewing experience.
2. (S) #1 was disappointed that he did not have more target correlation during his session. He stated, however, that he now had an understanding of how his analysis of his images produced false data. He was eager to try remote viewing again so that he would have the opportunity to report his target impressions without analytical interference.
3. (S) #1 and #28 got along very well during the session. #1 was able to communicate openly with #28. #1 has a strong personality, is extroverted, and physically active. #28 has an appreciation for these basic personality traits and relates to them well.

~~SECRET~~