

~~SECRET~~

ORCON/NOFORN

INSCOM

GRILL FLAME

PROJECT

SESSION REPORT

CLASSIFIED BY: Director, DIA
REVIEW ON: 31 May 99
EXTENDED BY: Director, DIA
REASON: 2-301-C (3) (6)

GRILL FLAME

~~SECRET~~

~~SECRET~~

SUMMARY ANALYSIS

REMOTE VIEWING (RV) SESSION XXXVI

1. (S) This report provides documentation of a remote viewing session conducted for the purpose of orienting a remote viewer to an applied remote viewing protocol.
2. (S) The target impressions related by the remote viewer during this session provide for little or no target correlation. The remote viewer was not confident about this session. He was bothered by personal/work problems. He was unable to physically relax and concentrate on the task at hand. He was also under the influence of a virus cold. Ambient room noise was extreme.
3. (S) The protocol used for this session was modified from that which will be used in later training. The protocol to be used in later training is detailed in the document, Standard Remote-Viewing Protocol (Local Targets) by Harold E. Puthoff and Russell Targ, November 1978. This session's protocol was modified in that a randomly generated, preselected target was not used due to the unavailability of the target pool. In lieu of a randomly generated, preselected target the "outbounder" or "beacon" simply chose a site which, in his opinion, was unique and identifiable.
4. (S) Following is a transcript of the viewer's impressions during the remote viewing session. At TAB A are drawings made by the viewer reference his impressions of the target site. At TAB B are photographs of the target site. At TAB C is a post-session interview.

~~SECRET~~

~~SECRET~~

TRANSCRIPT

REMOTE VIEWING (RV) SESSION XXXVI

TIME #66: This will be a remote viewing session. (Edited for security.)

PAUSE

#10 I seem to be . . I can't get down on the ground . . I seem to be overlooking an area.

#66: Okay, well, #43.5 is out at the site now. So, take a look at the site with him.

#10: I'm trying to get on the ground so I can get a perspective of where I might be. Or what might be there.

#66: Okay.

#10: It's difficult. I felt like I was flying around in a helicopter.

PAUSE

Something long and narrow. . .

#66: Okay.

#10: Just kind of comes and goes.

PAUSE

(Not audible)

I see something like a warehouse. Big. . . several openings. (Not audible).

PAUSE

+03 There seems to be an awful lot of movement. I don't. . But I can't. . . It appears that its moving, very rapidly. As if it were a train. It appears to be something like a train or moving around tracks, very fast. I feel like I'm in the middle of it and its just whizzing by me.

~~SECRET~~

~~SECRET~~

#66: Hmmm. Concentrate on it. Let it slow down.
In your mind, slow it down.

#10: Its at a high rate of speed.

Now I've lost it.

PAUSE

I don't know how to. . I don't know how to put
it on paper because its moving.

+05 Long, narrow, structure of some kind. Overhang.
Could be a storage. . . Shoot, I lost it.

PAUSE

+07 I got the same thing back. . it was rapidly moving.
Rapid movement. . going to the side and very fast.
I. . Its hard to tell if I'm moving or its moving.
I keep getting something associated with tracks
and speed. Buildings, very few, but long and
narrow. Something with an overhang.

PAUSE

Hard to draw.

PAUSE

Strange looking.

PAUSE

Ahh. . I can't. . I can't figure it out. Its
nonsensical.

#66: That's fine. Remember you don't have to figure
it out, all you have to do is describe the images.
Just watch the images. Don't try to figure it out.
You're doing very well.

PAUSE

#10: I can't get that one thing out of my mind that
I've drawn here. It just seems to want to hang
with me. I don't know why. I don't know what it
is. Its like something out of Buck Rogers.

PAUSE

~~SECRET~~

~~SECRET~~

#10: I can't. . . I keep getting the same thing. Only in different variations of it.

PAUSE

I was . . . I was up looking down. It appeared for a while there, he was in a . . . oh, a . . . an area with lots of shrubberies and lots of houses like a suburb, suburb of some kind. Just scattered all over the place. Houses everywhere. Structures, trees, heavy trees, heavy bushes.

#66: Get in down around there. Focus a little closer down. . . (not audible).

+12 #10: I seem to be having trouble getting down. That's what I was trying to do at first. And then, I went over this place and then when I came down I was in. . . it had something to do with speed and large, long, narrow structures. Now, I'm back over to this same place again. I'm picking it up again. I got down on the ground in one place and then when I get to this place I'm up in the air and I can't seem to be any place to come down. Its like looking over a triple canopy. There's no place open. But I can see many, many structures. . white. Lots of bush-like. . . shrubbery, trees.

PAUSE

I get the feeling. . . I feel very uncomfortable over these houses.

I feel better over in the other. . area where the buildings are. The long narrow buildings.

PAUSE

#66: Where is #43.5 in relationship to this?

#10: I can't. . . It doesn't seem to relate at all. It could be anywhere. To me, he should be over with the warehouse or long, narrow buildings. Where this speed that I was getting was. Flashing by, as if it were a railroad car.

PAUSE

~~SECRET~~

~~SECRET~~

#10: It could have been a highway with cars going by for that. . . I get a mixture of things. .

PAUSE

Like that . . .

PAUSE

+15 Its like some type of a security fence. It looks something like wire and metal, dull. Okay. . Okay. . . He must be on post.

#66: That's analytical. What was it that flashed in your mind that gave you that? Describe the flashes in your mind that gave you that.

PAUSE

#10: That clued me to that particular??

#66: Yeah.

#10: I saw the. . when I was picking up these long, narrow buildings, I had the impression that it was perhaps a warehouse or something. The. . . compound for. . . prisoner compound?

#66: Um hm.

#10: At the security fence around it popped into my mind. Very clear. Very clear. With the long, white barracks. Its just suddenly there it was.

#66: Is that a memory trace?

#10: It could be 'cause. . .

#66: Have you seen like. . anything like that around here or anything?

#10: When I was at the hospital for my EKG, I saw it.

#66: Um hm.

#10: Its possible that. . that jumped out. The security fence or what I thought it. . what I think is a chain link fence or something. . could have been along anything but that was like the buildings and the fence sort of triggered the. . .

~~SECRET~~

~~SECRET~~

#66: Now, is that image in your mind? If its not a memory trace, is that image in your mind?

#10: Now?

#66: Close by these things?

#10: The other things. . . hardly. I don't know if there was a railroad track that runs through the post or not. I can't remember, but I just get the impression that. . . it could be railroad; it could be a long, narrow walkway, but I picked up a railroad, what I thought was a railroad. And I felt related to the compound. I don't know . . .

#66: Okay. Separate images?

#10: Separate images.

PAUSE

+18 The buildings that I saw; the mass number of buildings was like a subdivision of just lots of houses clustered together with lots of trees.

#66: Okay.

#10: White. Everything appeared white. No color. The roofs were dark. The sides were white. Every building that I've seen.

PAUSE

That compound seems to stick in my mind. It just may have been jogged out by the fence. But that's where I'm standing right now is outside that fence looking in. And I'm by myself.

PAUSE

#66: Then, again, that may be a memory trace that you're developing?

#10: Its probable.

#66: Um hm.

#10: The thing that clued me was the fence. A security fence.

~~SECRET~~

~~SECRET~~

#66: Okay.

#10: That's what I saw. And then I saw. . . Then I kind of put it with the long, narrow buildings, which I thought at the time were warehouses. . . I still haven't discounted it as a storage type building. It could be barracks. They seem to fit the pattern. Those buildings in the compound and this particular type of building.

#66: You (not audible) with a lot of analysis.

#10: I know.

#66: I know its difficult to do. Just give me your flashes. Stick to your one or two word things and see if you can't stick to that. Lets see if that falls together just with the flashes without you doing any analyzing.

PAUSE

+20 #10: I can't seem to get a picture (not audible).

PAUSE

I see a circular. . . like discs.

PAUSE

It seems very difficult today. I can't seem to settle in one place. And, I. . it just keeps changing on me. Which, I'm really screwed up now.

I'm not getting anything positive.

#66: Okay. Is there anything that you want to add to your drawings? Do you want to draw any more? Elaborate any more?

PAUSE

#10: Helicopter. . . Interesting. . (Not audible).

PAUSE

~~SECRET~~

#66: Okay. Is there anything that you think that you want to add?

#10: No. I'm just. . I really hop, skipping and jumping around. I'm not. . . I can't seem to settle on one real positive thing.

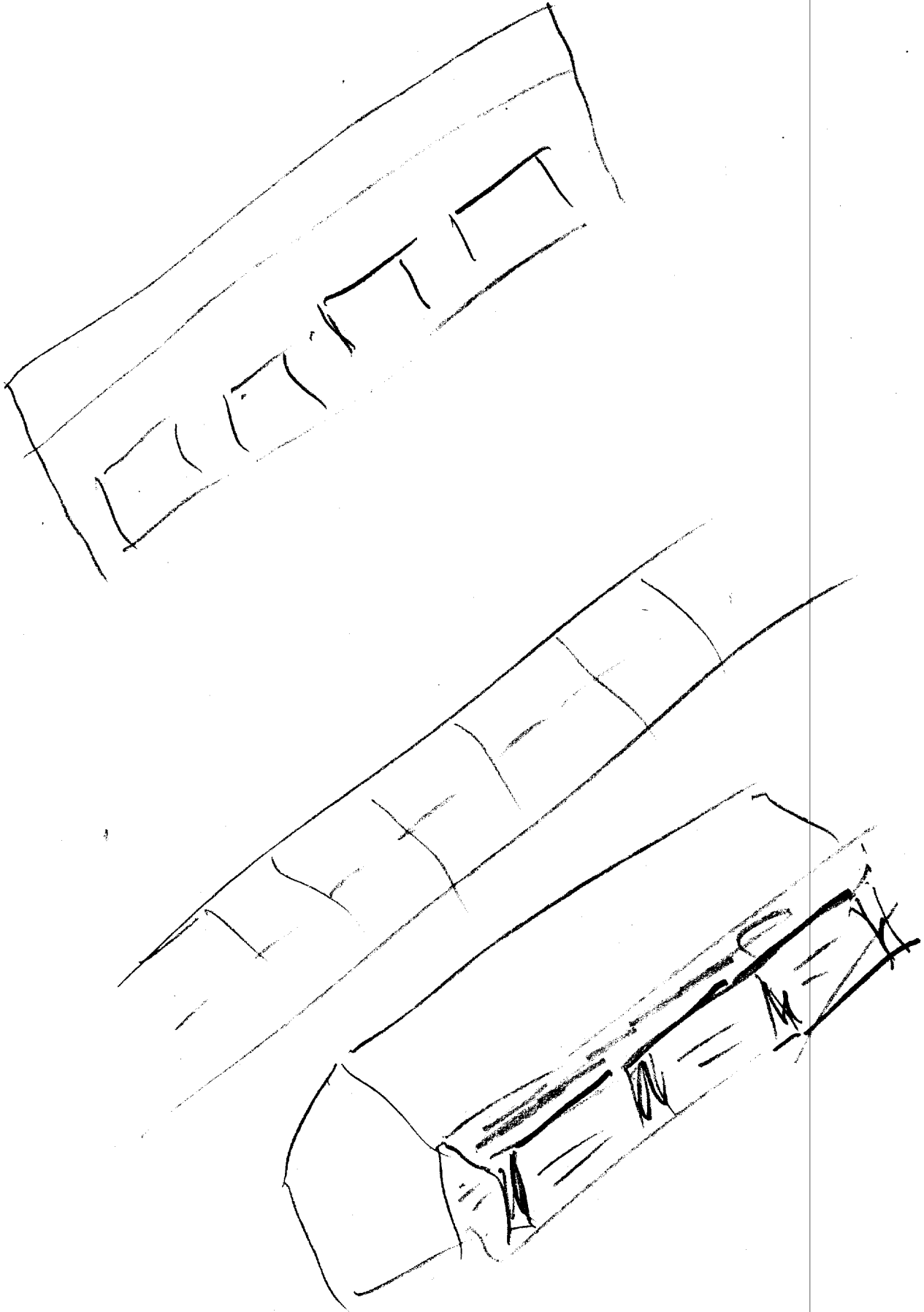
#66: Okay.

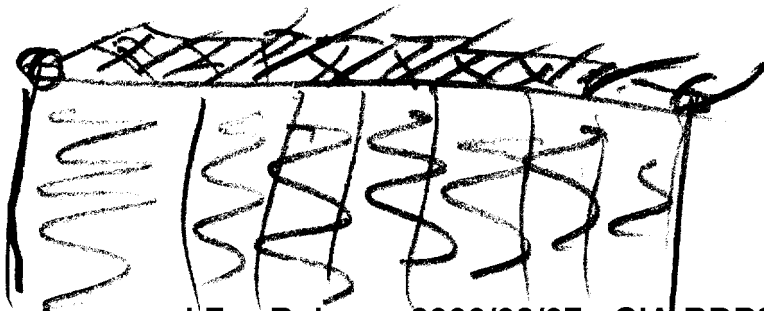
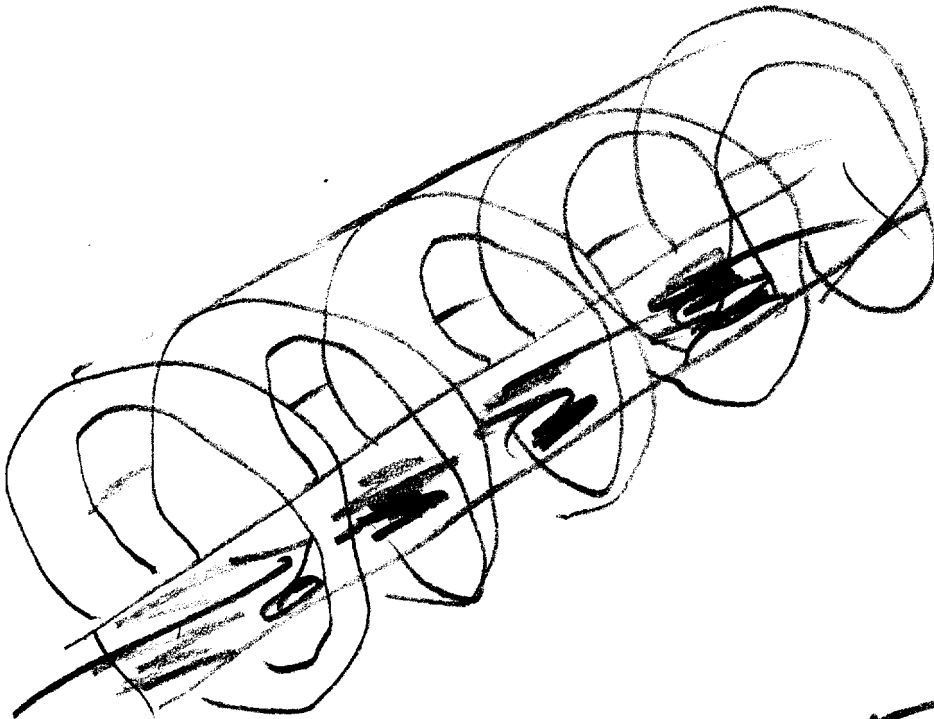
#10: Today must be hopeless.

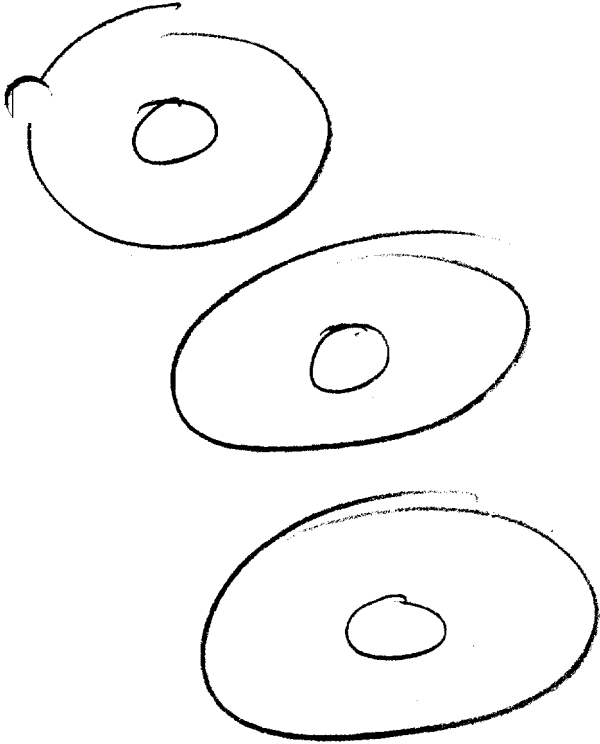
#66: Okay. Well let's go with what we've got then.

#10: Okay.

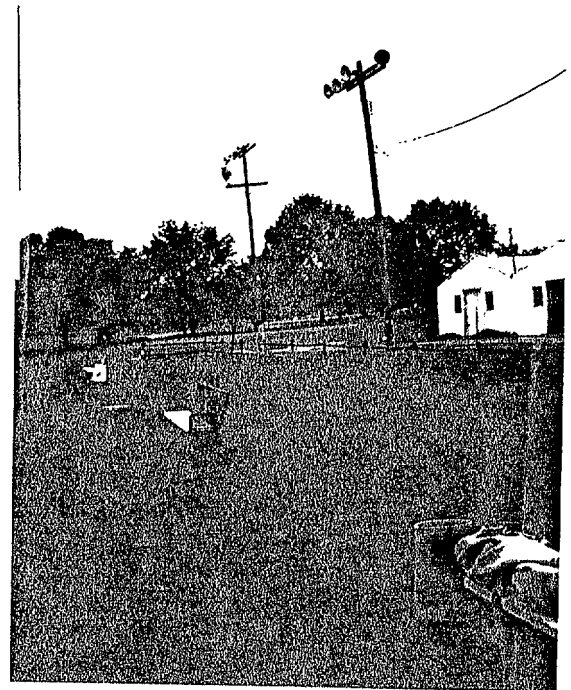
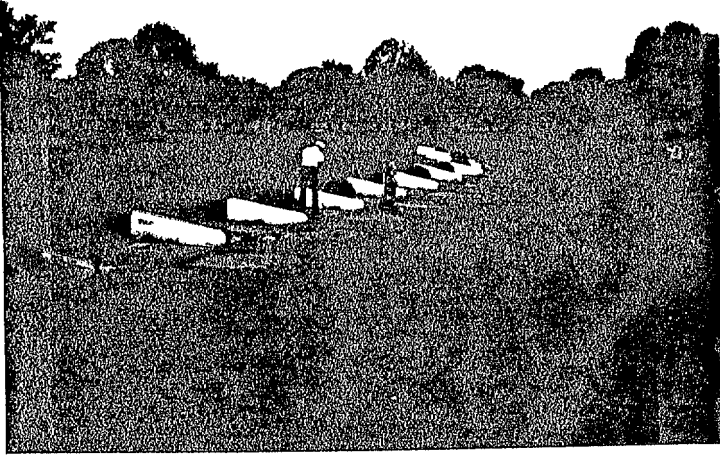
TAB A







TAB B



TAB C

~~SECRET~~

POST-SESSION INTERVIEW

REMOTE VIEWING (RV) SESSION XXXVI

1. (S) Post-session interviews are conducted after the completion of a session to provide the selected remote viewer with the opportunity to express himself concerning his viewing experience.
2. (S) #10 feels that he made a mistake by attempting remote viewing this time. The conditions were definitely not favorable. But having done a session he at least learned what was not the ideal atmosphere for remote viewing.
3. (S) #66 was unhappy with this session as well. The ambient room noise was horrible and #10 seemed unable to discipline his mental processes throughout the session. He simply was unable to focus on the target.

~~SECRET~~