

~~SECRET~~

INSCOM  
GRILL FLAME  
PROGRAM

CLASSIFIED BY: MSG, DAMI-ISH  
051630Z JUL78

REVIEW ON: Jan 2002

NOT RELEASABLE TO FOREIGN NATIONALS.

~~SECRET~~

67-007-82  
Cy / of 2 cyo

~~SECRET~~

SUMMARY ANALYSIS

REMOTE VIEWING SESSION 849

1. (S/NOFORN) This report documents a remote viewing session conducted in compliance with a request for information.
2. (S/NOFORN) The remote viewer's impression of the target are provided as raw intelligence data, and as such, have not been subjected to any intermediate analysis, evaluation or collation. Interpretation and use of the information is the responsibility of the user.
3. (S/NOFORN) The protocol used for this session is detailed in the document GRILL FLAME Protocol, AMSAA Applied Remote Viewing Protocol (S), undated.
4. (S/NOFORN) During the second phase of the session the remote viewer was interviewed concerning his impressions. At TAB A are drawings done by the remote viewer and his narrative concerning the drawings. At TAB B is the target cuing information provided to the remote viewer immediately prior to the session.

NOT RELEASABLE TO FOREIGN NATIONALS

~~SECRET~~

~~SECRET~~

TRANSCRIPT

REMOTE VIEWING SESSION #849

TIME

#72: This will be a remote viewing session for 20 January 1982 with a start time of 0900 hours.

PAUSE

It is now 9 o'clock. Our target for today is the individual in the photograph, Brigadier General James Dozier. Concentrate, concentrate, concentrate. Where is Brigadier General Dozier located.

PAUSE

#06: I'm getting a side of a building. It's all windows. It's all ceiling to floor windows. It's gone away. Get a large feel for rocks.

+04 #72: Where is the building located?

#06: Just a minute.

PAUSE

#06: Seems to be on a hillside. Lake, lake and woods. A road edge of lake. It's real mountains. Awful lot of snow.

#72: What is the lake called?

PAUSE

+06 #06: Word Trella...Troller or Trella.

#72: What is the name of the building?

#06: It's just a house. I just get one view. That's all. Perceive wall of glass, small squares. It's off the ground...faces lake. Dense woods. Lake's in the mountain. Road comes from southeast edge of lake. Large mountains, northeast. Lake shaped like a squash shape. No phones. See no phones.

PAUSE

~~SECRET~~

~~SECRET~~

+07 #06: Get an impression of owner. Feel a professor or teacher. University teacher or professor owns the building. I'm in trouble.....  
..... Keep getting an ice feeling....  
black ice.

#72: Concentrate on Brigadier General Dozier. How many people are in the building with him?

+11 #06: Five. Three always, five now. All male. (Mumble) trouble with the General...finding him. Keep seeing smooth, black ice. Black ...shinney substance.

#72: Touch the shinney substance and describe for me.

PAUSE

#06: Sheared , sheared away- cold, smooth  
That's all I get.

#72: I want you to go to an overhead position, look down at the lake, and the building. Describe any other structures in the area.

PAUSE

+14 #06: See numerous cabins, southeast...  
Small town. Main entry road comes from the south, southwest. Some kind of resort.

#72: What is the name of the town?

PAUSE

+15 #06: I don't know. I don't get anything.

#72: All right. What is the name of the area that the town and the lake..... What is it called?

+17 #06: I get a....get an old name. Padua. Very old. 300 years. I don't know why I got that.

#72: All right. Concentrate.

#06: Belonged to a....to a Cardinal, I think, or something.

~~SECRET~~

~~SECRET~~

#72: Concentrate on the house where the five people are with Brigadier General Dozier. How do the people receive information of what to do?

PAUSE

+21 #06: Get a main broadcasting station of some kind ....from the west. Has like dedications, song like dedications. It's a code with the names connection with a song.

#72: Where does the broadcast originate?

PAUSE

#06: Due west. Just get a five pole pattern on a antenna. Three tall, and two short mas-shaped in a square with a center piece. I was getting an impression of blue. Word blue, not color -square.?

#72: How do I find Brigadier General Dozier?

#06: Just a minute.

PAUSE

+23 #06: *I don't get a good answer*  
I get two, two answers. Can't get any sense out of them.

#72: Just tell me what you perceive.

PAUSE

#06: One is information they give. I don't understand that. It's an <sup>informer</sup> ~~informer~~ or what. They're going to give some kind of information of value to this location...participant is going to do that. That's all I get that I can make any sense out of.

#72: All right. That's all I have for you this morning. Is there anything you wish to add?

#06: Just a minute.

PAUSE

~~SECRET~~

~~SECRET~~

- +26        #06:        Get an impression that there's going to be some kind of, I don't know, explosion or something by these same people. It's ...be like a car type bomb. It's going to be on a military type installation, as well.
- #72:        Do you perceive the type car?
- #06:        That's what I'm trying to.....I get..... It's going to have a US Forces tag on it, but it won't be an American car. It will be a foreign. Trying to, trying to figure out where. I see a base with flat roofs, many flat roofs...an air strip, three runways..... small base. It's not big. That's all I'm getting. Brown, a lot of brown, stucco type colors...earthen colors, gold and browns..... That's all I'm getting.
- #72:        That's all that we have for today.
- (See TAB A for description of drawings)

~~SECRET~~

TAB

~~SECRET~~

REMOTE VIEWING SESSION #849

(DISCUSSION)

#72: We'll now continue this session with a description of some of the drawings from the session.

#06: On page 1 I have drawn a sort of a quasi outline of the Italian peninsula and I marked out...I put x's and little flake marks to indicate mountain areas, and I marked out what I call Padua area...what I perceived to be like a strip of land in the center of the upper portion of the peninsula. The upper northeast corner of that is what I perceive to be the area where the lake is. And, I don't know why I flash back to 300 years ago, or whatever to this thing I'm calling Padua, but I did.

In that circle there's a lake like on page 2. It's either called Trella or Troella. I put a northeast west symbol on it. The lake's spring fed. I don't perceive any rivers or streams going into it other than off the sides of the mountains. There's a very large singular mountain top on the left hand side of the lake that causes a lot of its shape. On the eastern shore about the center, there's a town or resort that backs the mountains. All the little X's on here indicate other cabins for like this resort area. And, then if you follow the southern tip of the lake around to the southwestern edge there's another area of a cabin, and that's the building I came on when I was asked where the General was.

I indicated the direction of the broadcast on the radio. I don't know if this is a local station or it's a shortwave. All I get is an impression of people's names being spoken in some form of code.

#72: Okay. Let's talk a little bit more about the broadcast and put it on this portion of the tape.

~~SECRET~~



~~SECRET~~

#06: Okay. I had an impression like they get all of their directions or at least their directions to go to certain pick up points or contact points via some form of radio communications. It's just a broadcast type of communications. It's not two-way. And, names are spoken in it. I don't know if it's call names or what it is. But, the type of call name that is used or the type of name that's used it is codified and indexed so that they could look it up on their list of index, and tell what they're supposed to do next.

The direction of the broadcast is west from the east side of the city that's due west of the location of this lake, and it's not too far away. That's essentially all I got about the broadcast.

Page 3 is a drawing of what the building looks like. It's got a flat roof, and this is either the only perception I had of the building or all four sides of the building are this way. It appears to be just flat walls of smooth glass. I keep wanting to call it a cabin because it's small. But, it doesn't have a cabin appearance. It's just like smooth glass wall. The city is visible from the back of this cabin or building...the resort, which I've labeled resort. And, it's right down on the edge of the lake. And, the base of this building is kind of raised up off the ground. So, you couldn't step right off the edge onto the ground.

#72: Impression of who owns or who controls it?

#06: Oh, I got an impression that it's owned or possessed by a professor type from the local university... like a teacher or instructor or something from the local university. I also got a sense that it was being used with his concurrence, with his knowledge. He knows that they're using it. I also got the impression at the same time that we will find the General when one of their own people tips us off. I don't know if the guy's going to do it for money or....I don't understand that. I just get that impression.

~~SECRET~~

~~SECRET~~

#06: Page 4 is the antenna array of the radio. This is what I perceived the radio antenna array to look like. The antenna A, B, and C are the tall ones. D and E are not so tall. I put a north, east, and west symbol in the center of the array. It kind of runs Kattycorner to north and south of some building over on the side. I don't know what that is. Thought it might be important.

I got two perceptions that I have to share. There's something not right about this group of people that is investigating in Italy. I think that ...when I was trying to decide where the information is going to come from on where the General is...I started thinking well, they're going to have a turn-coat, maybe. The information is coming from them.

When I was going over in my mind this word turn-coat or this...guy who is going to give us a location, I kept getting visual images of investigator type people and I'm left with an impression. It's like a very frail impression that they know what the Italian police are doing, when they're going to do it. They have someone very high up in their investigative ranks...that's tipping them or is part of the group. It's just an impression I had about that.

I also had a very strong impression at the same time of a car bomb being set up or in the processes being set up in an American operated Air Base somewhere. It's a very small base though. Not very active. I had an impression that it probably would be a residential area of the base that it's being set up in versus the local commissary or PX or whatever or headquarters building. That's all I have.

#72: When you say Air Base, do you refer to a Air Force Base or a Base that has an airstrip?

#06: I don't know. I really don't know if it's an Air Force type. It's a base with an airstrip. It's got three runways; one short and two long runways.

~~SECRET~~

~~SECRET~~

#72: Did you have any impression of what type of vehicle or how we could identify the vehicle?

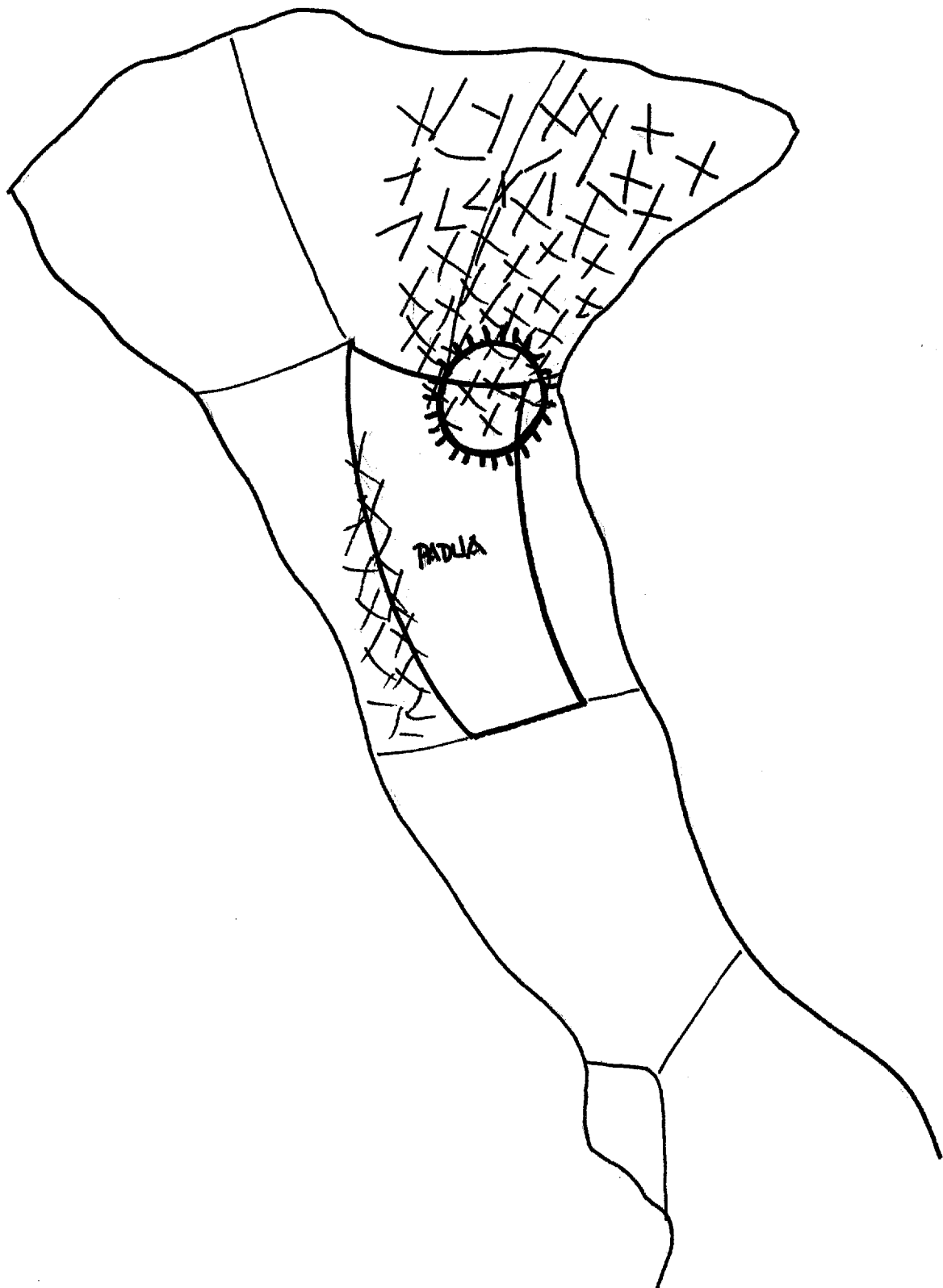
#06: No. I just get a tan or white. I get US Forces tags on it, but I think the tags are not real. I think they're just stolen somewhere. I just started getting a strong impression of that when I started looking for something else.

#72: We'll terminate this session now. As we terminated, a couple of more ideas that came through that we might want to mention. Have no idea of what the significance is but they were strong impression in the session.

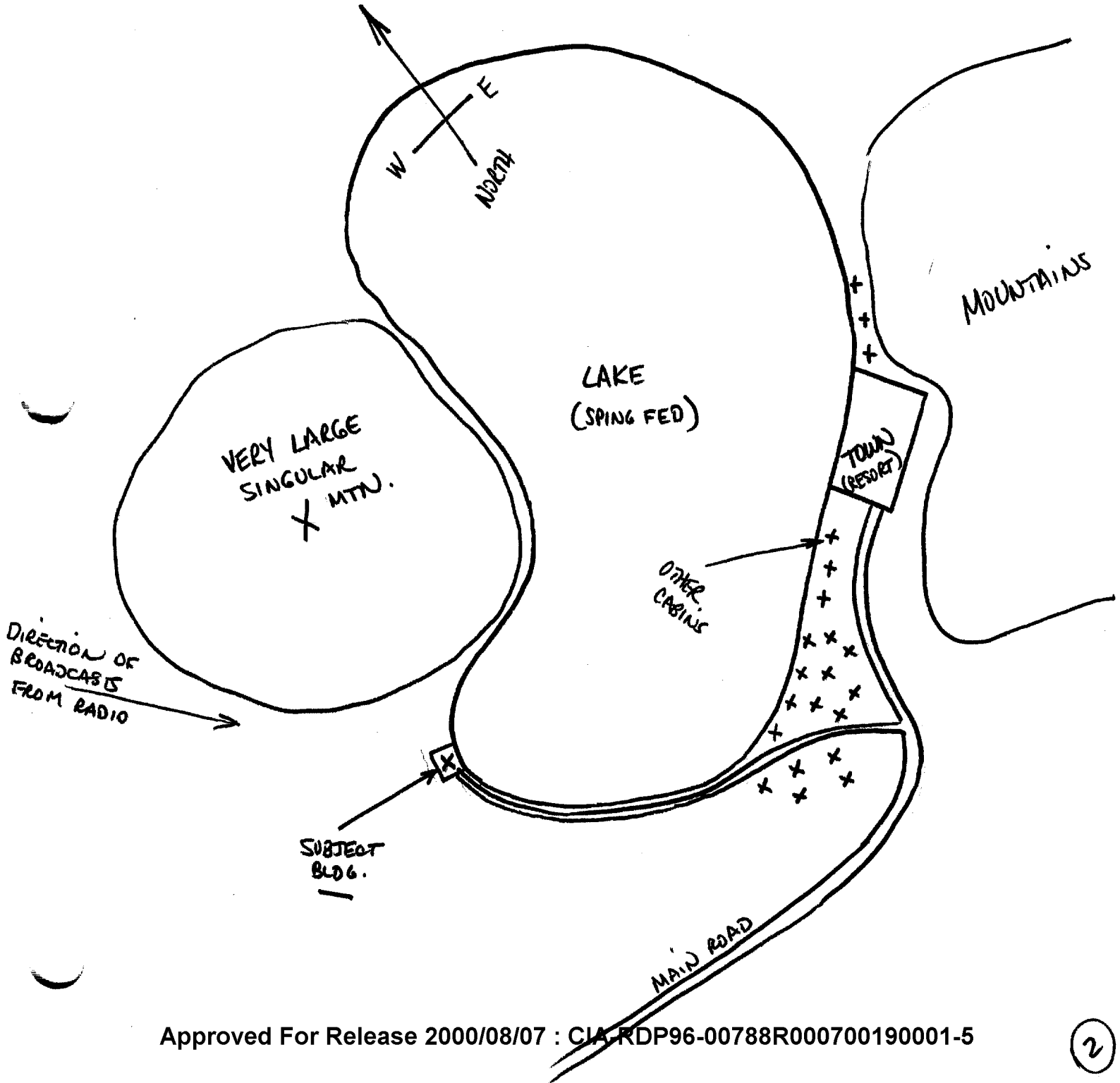
#06: Two very strong things came through in the session, and I don't know what they relate to or anything about them.

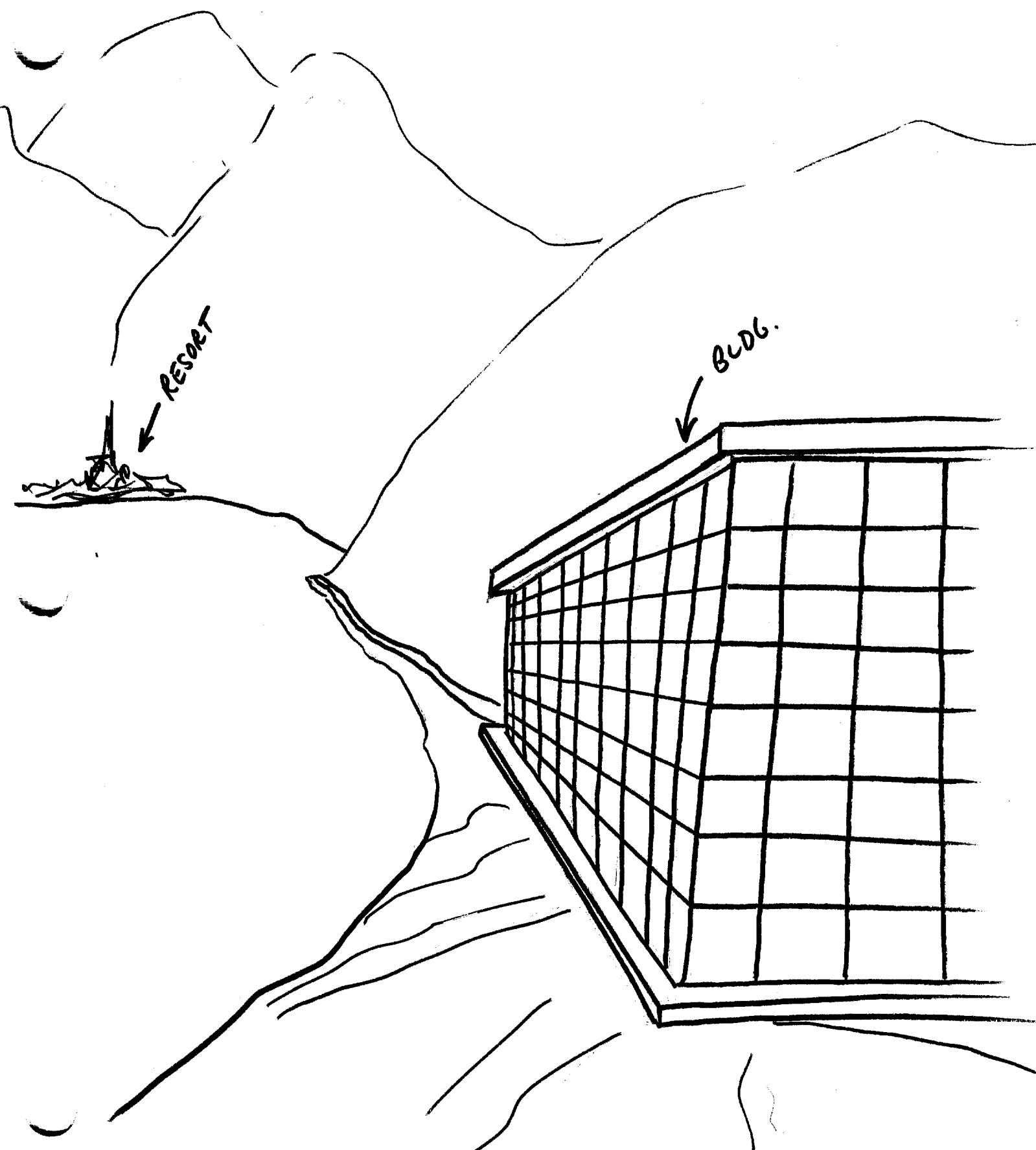
One is a very, shiney black ice and the other is the word blue. Not the color, just the word blue, and I don't have any idea where they came from or why, but they were very, very strong impressions. But, they might have something to do with..somebody might know somewhere. That's all I got.

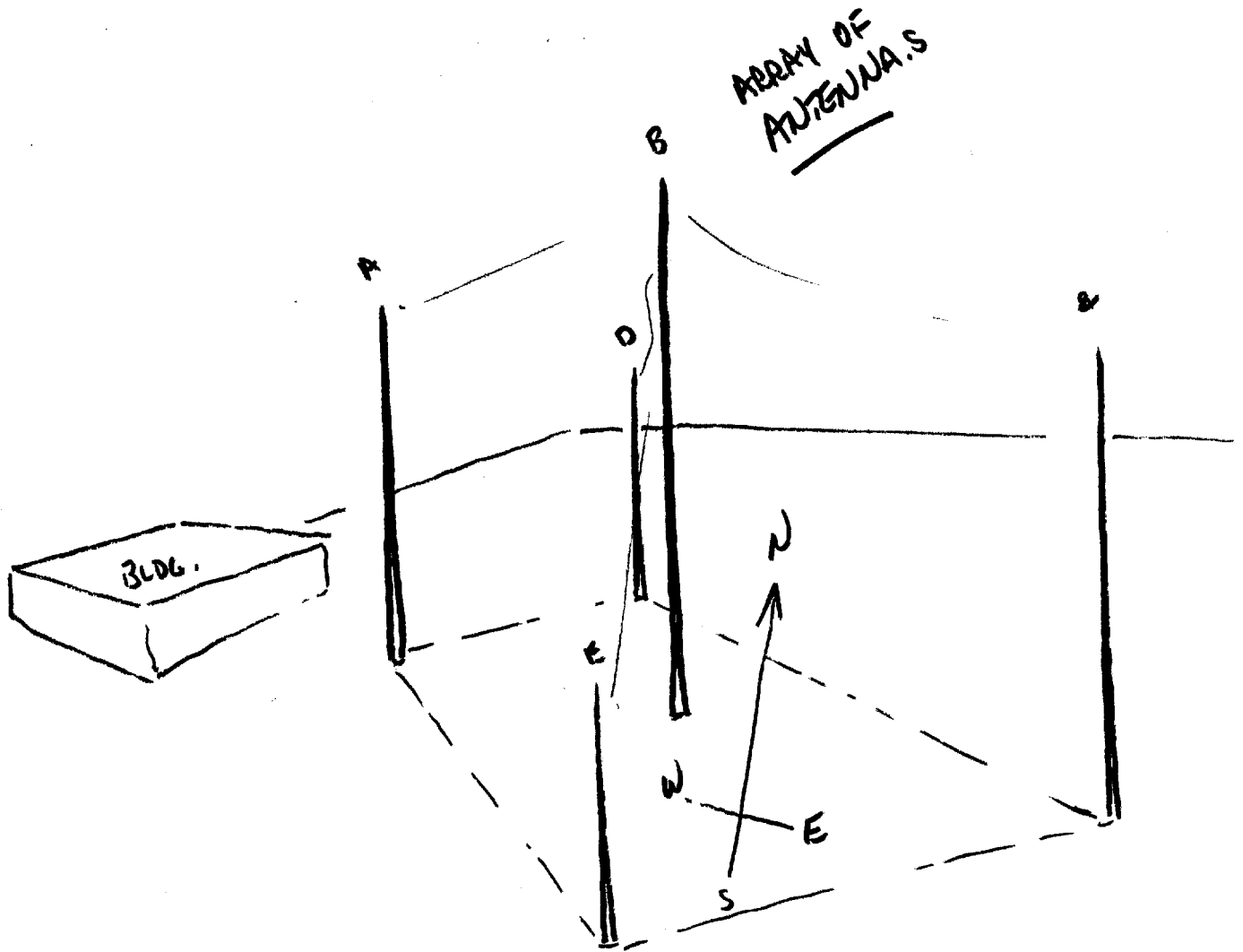
~~SECRET~~



TRECCA  
OR  
TROECCA.







TAB



~~SECRET~~

TARGET CUING  
REMOTE VIEWING SESSION 849

1. (S/NOFORN) Immediately prior to the session the remote viewer was shown an official photograph of BG James Dozier. The remote viewer was told the individual in the photograph was BG James Dozier.
2. (S/NOFORN) The remote viewer was asked to locate BG Dozier.

NOT RELEASABLE TO FOREIGN NATIONALS

~~SECRET~~