

SECRET

INSCOM
GRILL FLAME
PROGRAM

SESSION REPORT

SECRET

NOT RELEASABLE TO FOREIGN NATIONALS

ORCON

CLASSIFIED BY:MSG,DAMI-ISH

DATED: 051630ZJUL78

REVIEW ON: *Apr 2001*

GRILL FLAME

48-063-81
Cy 1 of 2 cyp

SECRET

SUMMARY ANALYSIS

REMOTE VIEWING SESSION 807

1. (S/NOFORN) This report documents a remote viewing session conducted in compliance with a request for information.
2. (S/NOFORN) The remote viewer's impressions of the target are provided as raw intelligence data, and as such, have not been subjected to any intermediate analysis, evaluation or collation. Interpretation and use of the information provided is the responsibility of the requestor.
3. (S/NOFORN) The protocol used for this session is detailed in the document Grill Flame Protocol, AMSAA Applied Remote Viewing Protocol (S), undated.
4. (S/NOFORN) Following is a transcript of the viewer's impressions during the remote viewing session. At TAB B is target cuing information provided the remote viewer. At TAB A are drawings made in support of this session.

SECRET

NOT RELEASABLE TO FOREIGN NATIONALS

SECRET

TRANSCRIPT

REMOTE VIEWING SESSION 807

TIME

#6.5: This will be a remote viewing session for 27 August 1981 with a start time 1330 hours. Are you on line?

#01: Check.

#6.5: This will be a pre-session brief. All right #01 you have worked this particular problem five times, and I want you to know that ahead of time. No biggie. What we are going to be doing is going to be trying to help a team from SOUTHCOM, who are going in on the ground, who are already on the ground searching for this UH-1H helicopter that crashed back on the 17th of February, 0700 hours, local time. The tail number is 7321711. We will refer to that by the call sign 711. You want to look at the UH again?

#01: Yes.

#6.5: Our job then is to help this search team locate this helicopter. That's our mission today, and I'm going to have a series of questions..... I've got some coordinates that we're going to work off of, and everything else. But, when we first start the session I want you to focus solely on where the plane crashed. That'll be your job. That'll be my first direction to you....is to go to location to where----okay, and from there we'll take off. Are there any questions?

#01: Nope.

#6.5: Are you ready for this one? This is going to be the humdinger. You have 26 minutes to relax. I will put this on pause and later we will get back in business.

PAUSE

#6.5: Okay #01, we are going to start the session now. I want you to relax; I want you to concentrate, focus on the helicopter call signs 711. Focus on the location where that plane crashed on 17 February 1981. Focus yourself, your attention on that helicopter right now. Relax and concentrate on it. Let me know when you have arrived at that crash site.

PAUSE

+03

#01: Okay.

SECRET

SECRET

#6.5: Okay. First thing we want to do #01, we want to determine the altitude at which this helicopter crashed. Determine the altitude where this helicopter crashed in landing. What is the helicopter altitude of that location?

#01: Okay. Just a minute.

#6.5: Okay. Take your time.

#01: I get about 1100 feet, thousand to 1100 feet.

#6.5: Okay. I understand the plane crashed at an altitude of about 1100 feet.

#01: Correct.

#6.5: Okay. Where?

#01: It's above sea level.

#6.5: Aha. I understand. I want you to describe the area, very briefly, the area that you see the helicopter in right now.

#01: Very thick jungle. It's like multiple canopy jungle. It's very tall trees, thick, space, and then like large bushes.. large brush...very high, maybe 12 feet. Also very thick. It's about a 6 degree grade. The, where it is land (phonetic) it's upside down and on its left side. It's damaged severely as it came through the trees. About two-thirds up the side of this hill....mountain in the background....and a river.... mountaintop looks like a half a flat ledge going around the front.....that's all I'm getting.

#6.5: Okay. I want to try something new #01 to aid the search team today. I'm going to give you some coordinates. What I want you to do is to focus on the crash site. Keep that in mind, be aware of where that is and store it in one corner of your mind. Then I will give you this coordinate, and I want to know if there is a relationship to the crash site to the coordinate that I give you. Okay?

#01: Aha. (affirmative)

+09 #6.5: Okay. The first set of coordinates I give you:

04 degrees, 28 minutes, 30 seconds South
79 degrees, 25 minutes, 40 seconds West

Focus on that coordinate keeping in mind where the helicopter crashed, and tell me if there is a relationship between the two.

SECRET

SECRET

#01: I'm not getting any direct relationship. That apparently is to the northeast crash site.....

#6.5: Can you tell how far?

#01: Four clicks, five clocks. That's kilometers.

#6.5: Okay. Again, concentrating on the crash site let me read you another coordinate:

04 degrees, 27 minutes, 30 seconds South
79 degrees, 26 minutes, 25 seconds West

Concentrate on that coordinate in relationship to the crash site.

#01: I'm not getting anything at all with that coordinate. Nothing at all is happening with that.

#6.5: Okay.....Let me give you a third coordinate. Again, concentrating on the relationship between the coordinate I give you and the crash site:

04 degrees, 27 minutes, 30 seconds South
79 degrees, 24 minutes, 50 seconds West

Concentrate on the relationship between that coordinate and the crash site.

#01: It's further south. Sort of east, southeast crash site..... All I saw...about six kilometers.

#6.5: Okay. Let me give you the final coordinate:

04 degrees, 26 minutes, 05 seconds South
79 degrees, 27 minutes, 30 seconds West

Relationship now, concentrate on the relationship between that coordinate and the crash site.

PAUSE

#01: It's like up, up hill....feel like I just switched west... crash site and up the side of a mountain....perhaps the center of the mountain or just past center of the mountain. It's about four kilometers. No. It's further than that. Seven kilometers. It's hard to tell because it's up.

#6.5: Okay. I understand. Okay, from any of those four coordinates, #01, concentrating all your awareness on it, from which one would it be easiest to find the helicopter?

SECRET

SECRET

#01: In the...in the mountain coordinate. The last one.

#6.5: In the last one?

#01: Yes.

#6.5: What makes you say that?

PAUSE

#01: The approach has got fewer rivers. It's higher ground..... It's easier downhill than up.... The main reason there's fewer river crossings. Very difficult otherwise. First coordinate's closer but there's two river crossings. See two rivers.

#6.5: You're saying in relationship to the first coordinate there are two rivers between that coordinate and the crash site?

#01: That is correct. The other two, I'm just kind of indifferent.

#6.5: In at least one of your sessions #01 you talked about people in the area. The natives?

#01: That is correct.

#6.5: Can you tell me here they came from?

#01: Closer to the first coordinate. They're like west, southwest to the first coordinate. Two kilometers, perhaps. On the edge of the first river.

#6.5: Tell me the name of the village from where they came.

#01: Starts with a "P". P-r-e-d something, Prelad...Pred..prel... Prelagos, Prelos, something like that.

#6.5: Okay. I want you to go to that village, at this time #01, and tell me about the village.

#01: It's....it's on a cleared river bank....it's up on a rise... just a little agriculture. They're predominant natives of the area. They're wearing very little loin cloths. Appear to pack their hair in mud or something. Trim it very bowl shape. They're dark, not too dark. They have more of a reddish hue to their skin. Very black hair. Huts are adobe type mud huts sticks packed with mud. Mostly hunters. Very old village.

#6.5: How big is this village?

SECRET

SECRET

+20

- #01: Not very large. Perhaps ...100 people counting women and kids. Chief mode of transportation is canoe.
- #6.5: How many buildings are in this village?
- #01: Thirty maximum. Twenty-eight, thirty. They're sort of round (mumble) mud walls. Everything has a reddish cast to it like it's a reddish clay, mud that they use. Sort of an oak red yellow (phonetic)....
- #6.5: Now, from this village to the crash site, how would a search party go?
- #01: They would, standing in front of the river, with their back to the village.....drawing a perpendicular line to the face of the village.....and calling that line zero, it would be about 35 to 40 degrees right of the zero, perpendicular line. Cross the river, sort of a flat area, another river.....over to the side of.....sort of a hill.....right side of a hill. Through a valley and then slight grade up the side of another hill.
- #6.5: When these natives visited the crash site, did they travel the whole way on foot?
- #01: No. There's.....rather than cross the river, they took the river.....and it's sort of frog legs...it goes right then left, then right, then left, and arrives at a point east of the crash site.
- #6.5: Okay. I want you to be able to concentrate and recall that later on when we do the drawings. At this time I would like to try something new. Slightly different. I want to use some words and some names and see if we can tell if there's any significance between them and the mission that we are on. Okay?
- The first one is Solonda. Let me spell that, S-o-l-o-n-d-a. Now, does that mean anything or have any significance to what we are doing?
- #01: No.
- #6.5: Okay. Amaluza, A-m-a-l-u-z-a. What is the significance of Amaluza?
- #01: That's the name of one of the rivers. Seems like...get a picture of one of the rivers.
- #6.5: Is it one of the rivers that leads to the crash site?

SECRET

SECRET

#01: One of the rivers that has to be crossed. I don't think it's one that goes to the crash site. I think it's the second one that's crossed.

#6.5: Okay. It has to be crossed coming from the village?

#01: Yes. That's correct.

#6.5: Okay. It's the second one that you cross?

#01: That's correct. May be a tributary off the first river.

#6.5: Okay. Very good. What is the significance and relationship to what we're doing to the word tuna?

#01: That's not significant other than that's a nickname of some kind.

#6.5: Do you know what it's a nickname of?

#01: No. I just know it's a nickname.

#6.5: Okay. And, finally we have talked before on one of the areas and referred to as Piedra Blanca. Do you recall that?

#6.5: My question is...the question that the search team has, Is there more than one Piedra Blanca?

#01: It's two peaks. There's like the Papa and the son..... helicopter is east, southeast of the Papa...the son faces it but it's further away.

#6.5: The one that you're saying is Papa, that's the taller one?

#01: That is correct.

#6.5: Is Papa the one that has the flat top?

#01: That is correct. It's got the ledge around it.

#6.5: Flat edge on top, okay. And, how far is Papa from the crash site?

#01: It's right next to it---3 kilometers.

#6.5: Okay. Now, the final question I have #36. I want you to concentrate on the ground search team, the ground search team that is headed up by a Lieutenant Colonel Rinaldi, R-i-n-a-l-d-i. I want to know how many men are in this search team, the ground search team.

SECRET

SECRET

#01: Okay.....It's six counting him. I think it was planned for more, but I think it's what they wound up with on the ground---six.

#6.5: Okay. Concentrating on that search team now, describe their location right now, 1400 hours, our time and whatever time it may be where they are.

PAUSE

+30

#01: They're moving along side a river.....parallel to it.

#6.5: What is their mode of transportation?

PAUSE

#01: I have them moving by boat of some kind...sitting down... moving along the edge of the river...

#6.5: Okay. I'm a little confused #36. You said that they were moving along side the river parallel to it, but now you're saying they're in the river?

#01: Yes. Yes. Aha.....

#6.5: Take your time.

#01: No. They're not in the river. Their mode of transportation requires sitting. They're on the ground though. Maybe they're not moving at all and that's why they're sitting. Their direction of travel is parallel to the river.

#6.5: I have no further questions at this time. Is there anything that you'd like to add?

PAUSE

#01: No. That's all.

#6.5: Well, let me ask you this. I'll slip it in. How far are they from the crash site now?

#01: Four kilometers. They're much further down in altitude than the crash site, though.

#6.5: Okay. What can we tell them to get them headed properly from where they are?

SECRET

SECRET

- #01: We should follow the edge of the river until the flat top mountain is.....80 degrees off their right, off their right front....also should turn to the mountain. That's the most direct way.
- #6.5: Okay. When they do that, when they turn to the mountain, where will that village be in relationship to where they are and where the target is?
- #01: They're further than the village now. It's to their left up the river.
- #6.5: Okay. I want you to recall all of that and we'll put that into a drawing. I have no other questions at this time. Is there anything that you'd like to add?
- #01: No.
- #6.5: Okay. Very good. I want you to bring your awareness back to this present time here in the room, and unwind. Move your toes, and we'll relax for a few minutes and then do some drawings.
- PAUSE
- #6.5: Okay. You've got your drawings ready?
- #01: Yep.
- #6.5: Okay. And, this number one, now---
- #01: Number one, the layout is close to scale in kilometers as I could get it, and it shows the Indian village referenced in the session as "A". "B" is the area that the team is in right now, and their direction of movement. "C" is the crash site which is indicated with a multis-cross. "D" is that Blanco mountain; this is the Papa, and the son is indicated with an arrow and the word "son." You know, the smaller one. "E" is the river I was talking about, and it branches everywhere. Christ, it goes everywhere.
- #6.5: So, we're showing the main flow.
- #01: Yes. The main flow. "F" is the main flow, incidentally. I put an arrow right under the "E" to indicate the main flow. I sensed an abandoned village where I put "F", which may or may not be important.
- #6.5: On the main flow, are you saying that the current runs this way?

SECRET

SECRET

- #01: Yes.
- #6.5: Let's just stay on... Let me ask you another question. When I read off some coordinates to you, and the first coordinate-----
- #01: Okay----- Just a second, and I'll tell you where I sensed the first coordinate to be. I sensed.....we'll make some X's here...we'll call that the first coordinate. Second coordinate is off my map; third coordinate I sensed to be south of there.....like here. That's the third coordinate. And, the fourth coordinate, I sensed to be way over here. Actually, it's off the map, but.....
It's just a hair off map. Somewhere between the top of this mountain and off this map is where it's at.
- #6.5: So, in other words, if, on the fourth coordinate, if you came right over the top of Papa and went down the hill-----
- #01: ----down the valley and up the hill, you'd hit it. That's that flat area on the side of the hill.
- #01: Page two. It's just an example of the way the jungle is laid out...first canopy, second canopy and then the very high 12 foot undergrowth, and the way the bird's laying up underneath there.
- Number three is the layout of the way the huts look and the village, like the edge of the village up on high ground away from the bank of the river.....all, it's kind of like inset in the jungle, and they have like these canopy raised areas in there, and all the huts are round and like connected together. They're mud, you know. They put them up like with sticks and then hack mud against them...like a reddish, yellow mud.
- And then page four is just the drawing of what the natives look like and I wrote a whole bunch of stuff on there. That's it, really.
- #6.5: Okay. I was just looking at your first map here, again, on the area and saying, in response to the question, if you follow down into a flat top mountain with 80 degree off your front, you're talking about someplace in here-----
- #01: Somewhere in there. I'll draw a dotted circle. Inside the dotted circle, you would be, and if this line was zero degreesthen this would be 80 degrees.
- #6.5: Is that point here that I'm pointing to, is that another river going in between these two mountains?

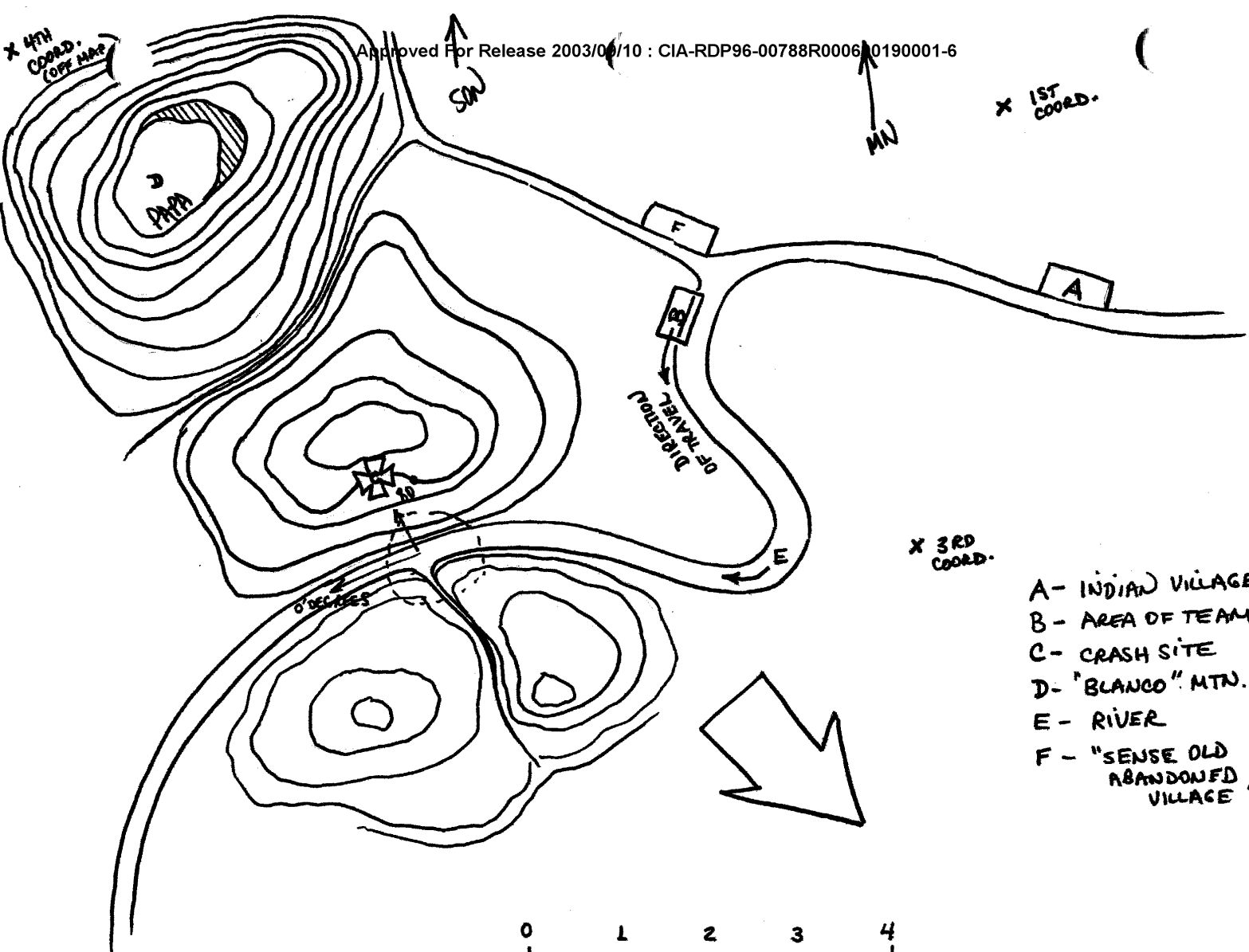
SECRET

SECRET

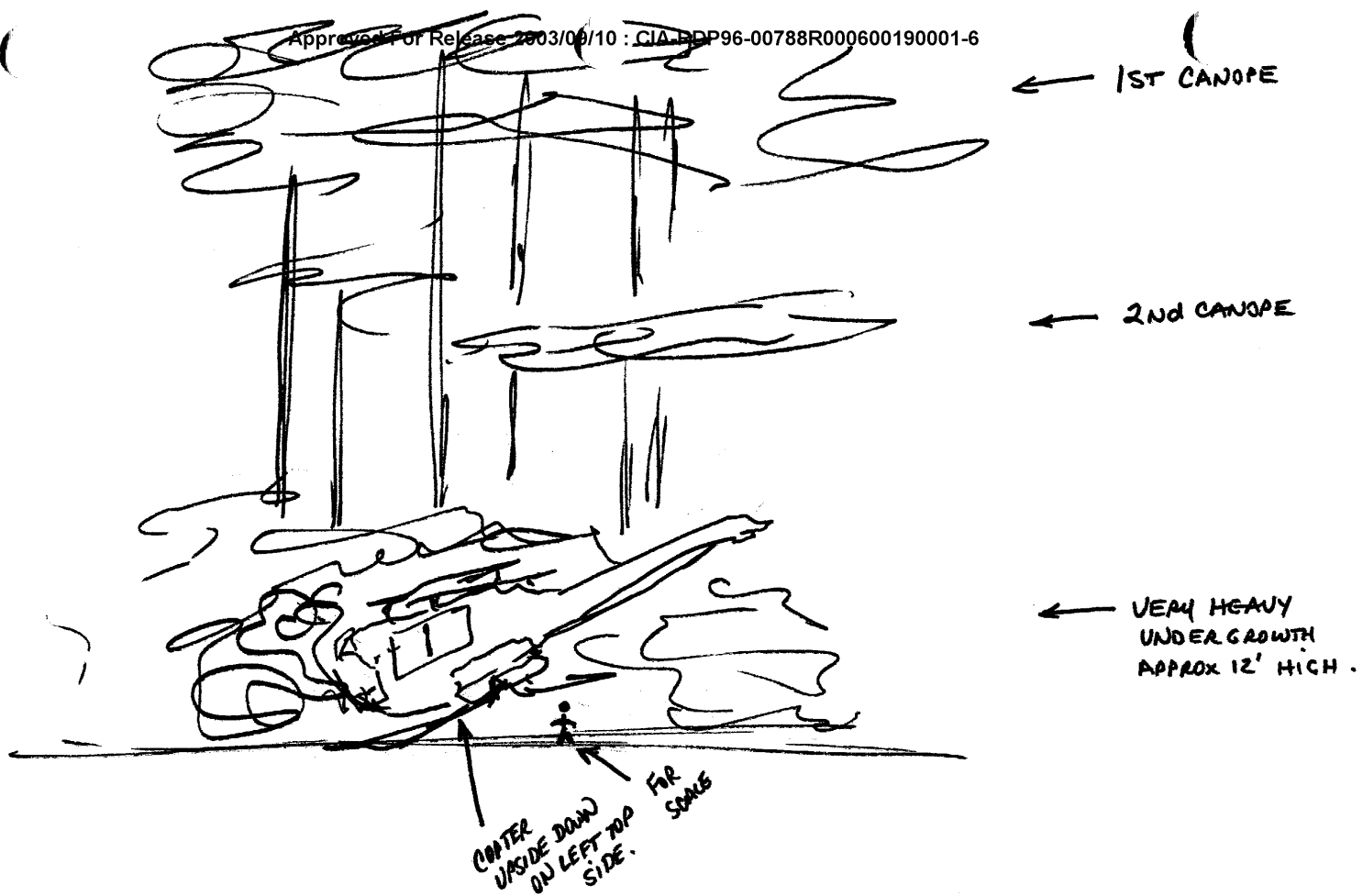
- #01: Yes. It's like a tributary. But, I'm not sure if it's exactly where you would make that right or not.
- #6.5: Sure, but it would be nearby there.
- #01: But, it's nearby there, yes. It drops to, through lower hills. Actually, the whole flow of this land is going downhill the direction of this large arrow that I'm going to put on this paper....sort of southeast...the whole flow of the land is sort of downhill southeast.
- #6.5: Okay. Very good. Is there anything else you want to add?
- #01: No. That's all.
- #6.5: End of session then.

SECRET

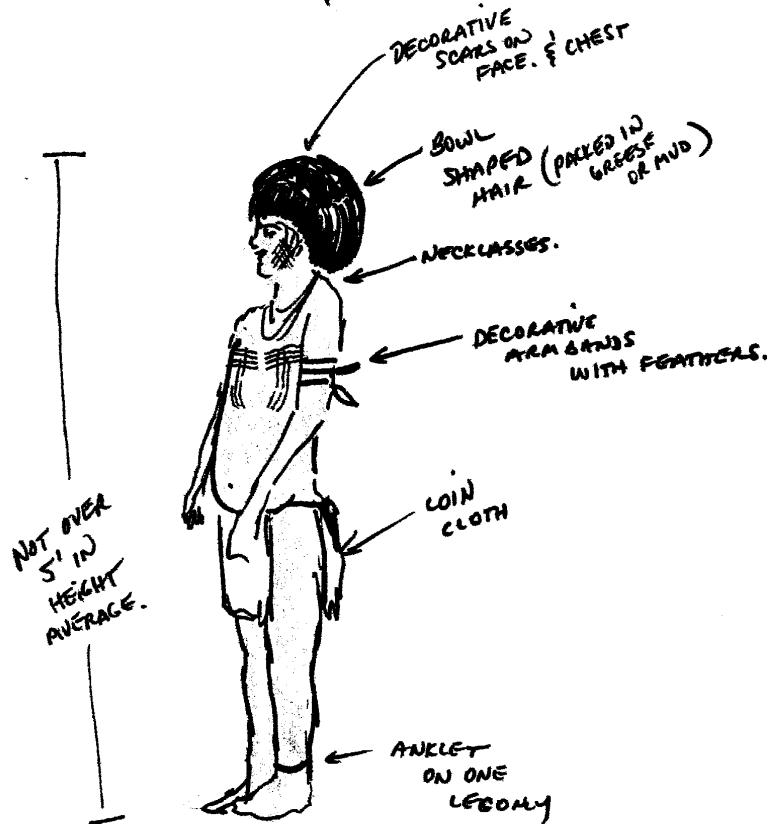
TAB



- A - INDIAN VILLAGE
- B - AREA OF TEAM
- C - CRASH SITE
- D - "BLANCO" MTN.
- E - RIVER
- F - "SENSE OLD ABANDONED VILLAGE"







TAB

SECRET

TARGET CUING INFORMATION

REMOTE VIEWING SESSION 807

1. (S/NOFORN) Just prior to the start of the session, the remote viewer was shown the attached photograph of a UH-1H helicopter with identifying data on it.
2. (S/NOFORN) During the session, the interviewer asked the remote viewer to respond to the following specific questions (NOTE: These questions had been provided to the project manager by SFC Wheeler of SOUTHCOM):
 - a. At what altitude did the helicopter crash into the ground?
 - b. First coordinate: 04 degrees, 28 minutes, 30 seconds South
79 degrees, 25 minutes, 40 seconds West
What is the relationship of this coordinate to the crash site?
 - c. Second coordinate: 04 degrees, 27 minutes, 30 seconds South
79 degrees, 26 minutes, 25 seconds West
What is the relationship of this coordinate to the crash site?
 - d. Third coordinate: 04 degrees, 27 minutes, 30 seconds South
79 degrees, 24 minutes, 50 seconds West
What is the relationship of this coordinate to the crash site?
 - e. Fourth coordinate: 04 degrees, 26 minutes 05 seconds South
79 degrees, 27 minutes, 30 seconds West
What is relationship of this coordinate to the crash site?
 - f. What is the name of the village that the natives came from, and how many people live there?
 - g. Does "Solonda" mean anything?
 - h. What is significance of "Amaluza?"
 - i. What is significance of "Tuna?"
 - j. Is there more than one "Piedra Blanca?"
3. (S/NOFORN) This is the 6th session conducted against this target by this viewer.

NOT RELEASABLE TO FOREIGN NATIONALS

ORCON

SECRET



UH-1H (1973) TAIL# 73-21711

17 FEB 81 @ 0700 LOCAL TIME

CREW:

SGFOIA3