

~~CONFIDENTIAL~~

INSCOM
GRILL FLAME
PROGRAM

SESSION REPORT

CLASSIFIED BY:MSG,DAMI-ISH
DATED: 051630ZJUL78

NOT RELEASABLE TO FOREIGN NATIONALS REVIEW ON: Feb 2001

~~CONFIDENTIAL~~
GRILL FLAME

Cs 1 of 2 copy

~~SECRET~~
SUMMARY ANALYSIS

REMOTE VIEWING (RV) SESSION DC-73

1. (S/NOFORN) This report documents a remote viewing session conducted in compliance with a request for information on a target of interest.
2. (S/NOFORN) The protocol used for this session is detailed in the document Grill Flame Protocol, AMSAA Applied Remote Viewing Progocol (S), undated.
3. (S/NOFORN) At TAB A is a summary of the data presented by the remote viewer during the session. A complete transcript of the session is available upon request. At TAB B are drawings made by the remote viewer reference his impressions of the target site. At TAB C is target cuing information provided the remote viewer. At TAB D are analyst comments.
4. (S/NOFORN) The summary at TAB A represents the salient points provided by the remote viewer, and as such, has not been subjected to any intermediate analysis, evaluation or collation. Interpretation and use of the information provided is the responsibility of the requestor.

NOT RELEASABLE TO FOREIGN NATIONALS

TAB

TRANSCRIPT SUMMARY

REMOTE VIEWING (RV) SESSION DC-73

1. (S/NOFORN) Source #46 reported the following information regarding the vicinity of geographic coordinates [REDACTED] as observed SG1A at 1200 hours, 29 January 1981, (time at the target).

a. (S/NOFORN) A shallow, desolate, uninhabited valley having narrow dirt roads. Within the valley was observed a chain link fenced compound. (Sketch #1). This compound contained:

- 1) An oversized barracks type building (sketch #2).
- 2) A beige dish type antenna (sketch #3) located very close to the ground. This object appeared to be pointed skyward.
- 3) Four to five small building were located along the perimeter.
- 4) Trucks were also observed inside the compound. (See sketch #4) The trucks were described as snub-nosed, olive drab, trailer rigs having a low, flat trailer with at least two sets of double wheels. The truck was designed to carry a missile or some such object.

b. (S/NOFORN) Inside the large building, source #46 observed a console having yellow, red and green flashing lights. The building was occupied by a group of about 20 to 25 people.

2. (S/NOFORN) Source #46 reported the following information regarding the vicinity of geographic coordinates [REDACTED] as observed SG1A at 1200 hours, 5 February 1981.

a. (S/NOFORN) Double the number of personnel were present, and a great deal of activity/excitement was on going. This excitement was being caused by something "outgoing". Source perceived a sense of success and exhilaration at the target.

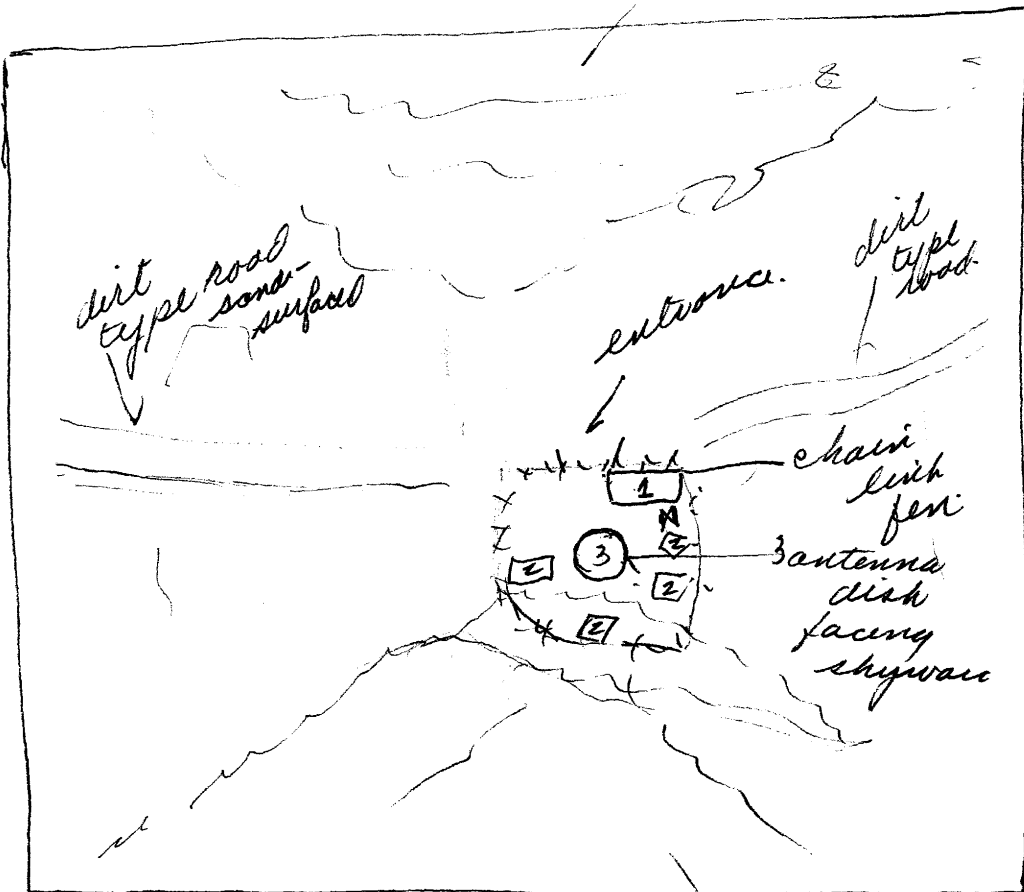
b. (S/NOFORN) The center of activity at the target was a "big hole in the ground" which was acting as a source of light, like an exceptionally bright sunlight.

NOT RELEASABLE TO FOREIGN NATIONALS

TAB

"grid overview"

Slight elevation



- ☒ 60-80ft radio transmittal tower
- 1 Principal (control) building
- 2 - Maintenance - Storage Buildings

Slight elevation

①

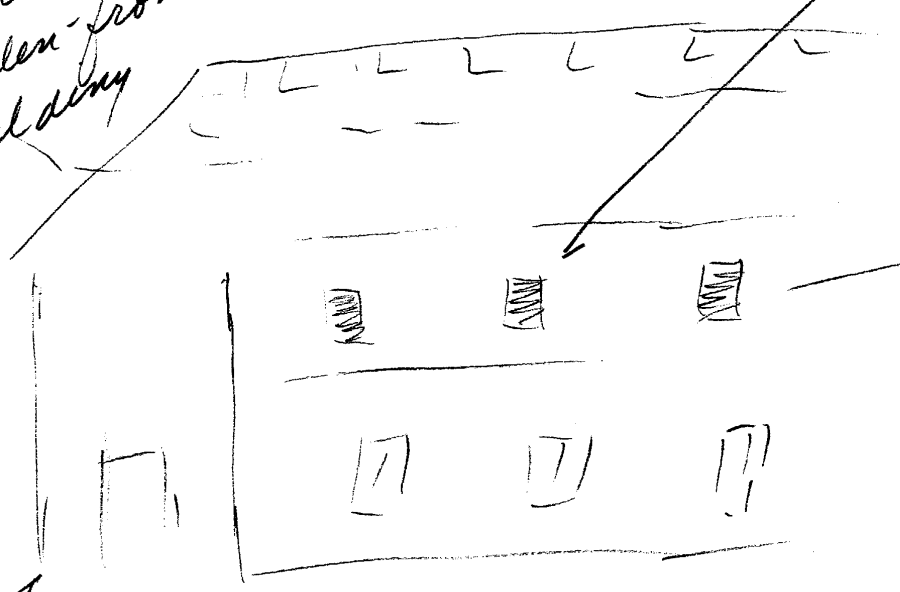
Principal Building

two story wooden-frame building

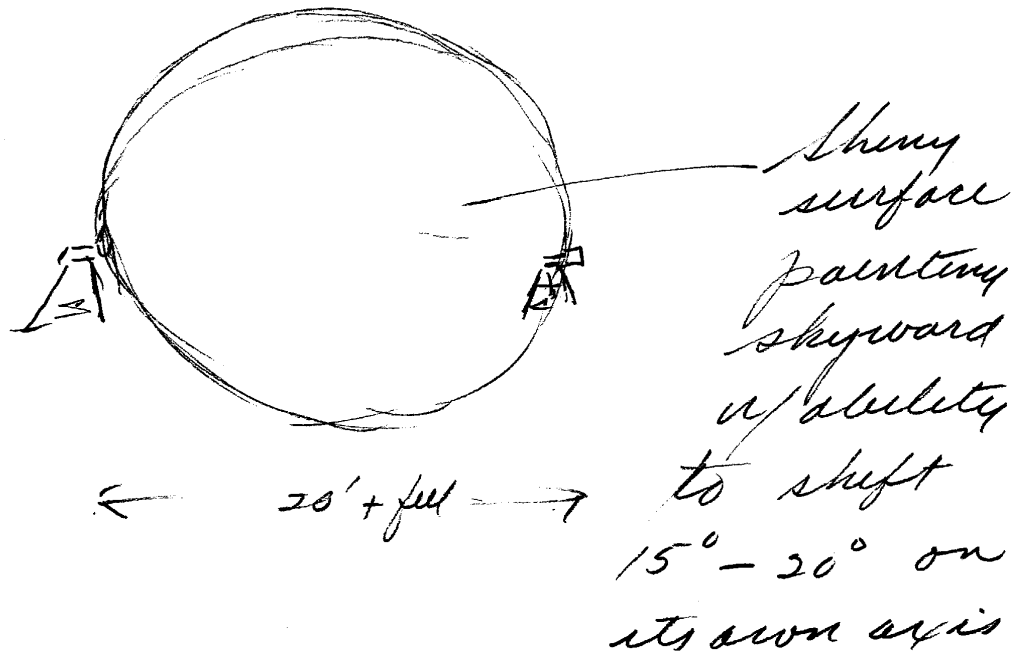
center of activity inside

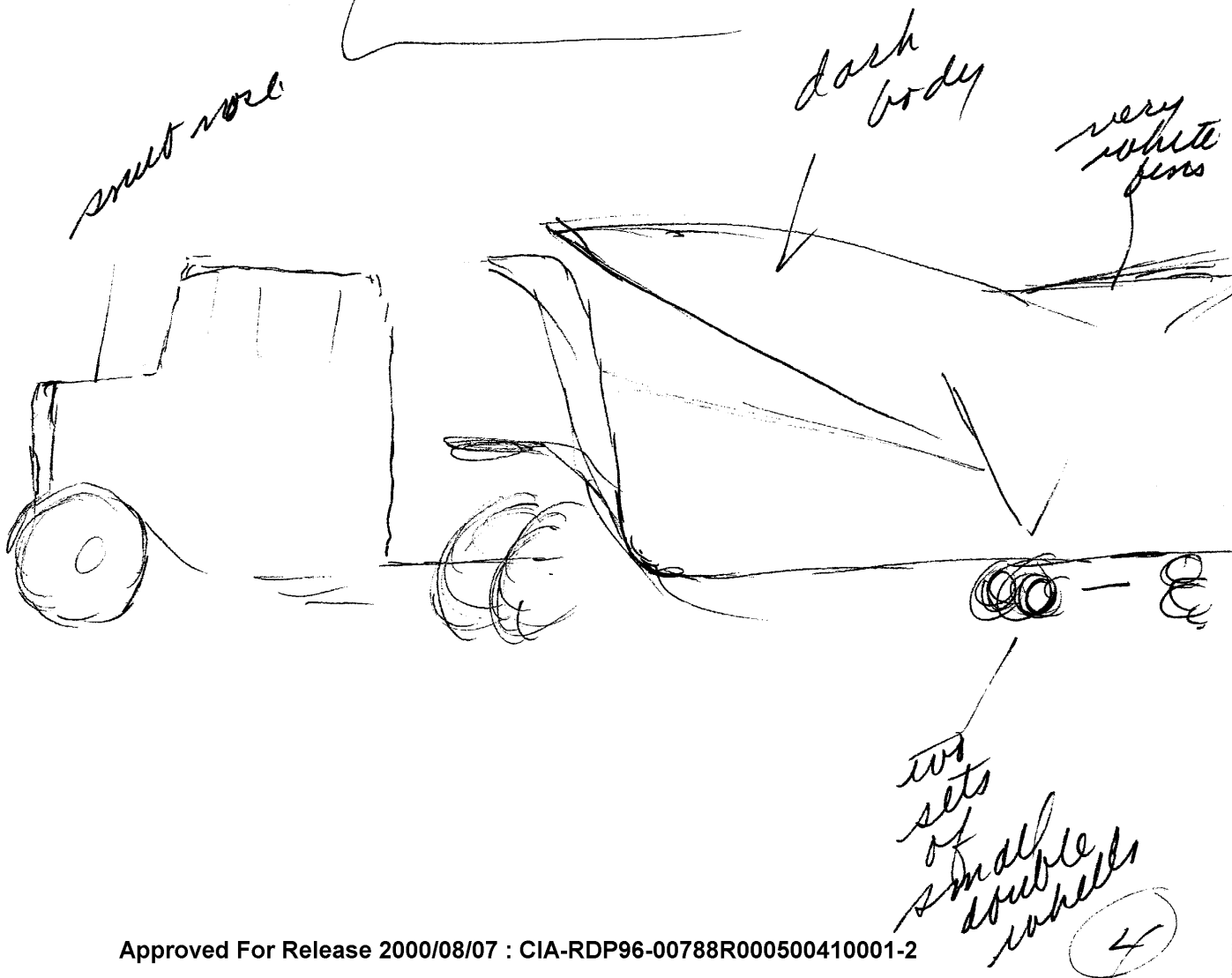
windows shaded

*Building (1)
Sketch (1)*



Dis. Antenna.
Item 3 - Sketch #1





TAB

TARGET CUING INFORMATION

REMOTE VIEWING (RV) SESSION DC-73

1. (S/NOFORN) At the start of this session the remote viewer was given a sealed envelope which contained a geographic coordinate relating to the target.
2. (S/NOFORN) The remote viewer was given the following tasking during this session.
 - a. Access the target at 1200 hours, 29 Jan 81, local target time. Describe the target area and report status of activity.
 - b. Move to 1200 hours, 5 Feb 81, local target time. Describe the target area and report status of activity.
3. (S/NOFORN) The envelope containing the coordinate remained sealed throughout the entire session.

NOT RELEASABLE TO FOREIGN NATIONALS

TAB

CONTROL ANALYST COMMENTS

REMOTE VIEWING (RV) SESSION DC-73

1. (S/NOFORN) Prior to the session, the interviewer was provided the following information for targeting of #46:

a. (S/NOFORN) A sealed brown manila envelope was provided within which was a sheet of paper, upon which the target coordinates were written. The interviewer was not informed of the actual coordinates, but was advised of the circumstances cited above.

b. (S/NOFORN) A sheet of paper was also provided, upon which ~~was~~ was the following:

I. Contained in the sealed envelope is a sheet of paper upon which is written a set of geographic coordinates.

II. EEI:

a. Access the target at 1200 hours, 29 Jan 81
(time at the target)

- 1) Describe area
- 2) Report activity

b. Move to 1200 hours, 5 Feb 81

- 1) Describe area (validation)
- 2) Report activity

2. (S/NOFORN) Prior to the session, the interviewer advised the remote viewer that #46's target was represented by the geographic coordinates contained within the sealed envelope. At no time was the remote viewer made consciously aware of the actual coordinates.

3. (S/NOFORN) In-session targeting: During the session, the Control Analyst provided the following guidance/direction to the interviewer at the approximate times indicated.

- a. +05 min: "Have (#46) scan through the fenced area."
- b. +08 min: "Have (#46) search the area for activity."
- c. +11 min: "Okay, let (#46) go inside (the big building)."
- d. +14 min: "Have (#46) back off, move up to several hundred feet and look down at the area."
- e. +17 min: "Okay, let's move to our next time."

- f. +22 min: "Have (#46) move to the center of activity."
- g. +25 min: "Earlier (#46) mentioned trucks, have (#46) look for trucks and access to tell what's inside."
- h. +27 min: "Have (#46) find one of the trucks now."
- i. +30 min: "Put (#46) in the rear of the truck and describe what (#46) finds or would find."
- j. +32 min: "Okay, that's all I have, ask (#46) if (#46) has anything more to add."

Kenneth V. Bell, Jr.

KENNETH V. BELL, JR.
CPT, MI
Control Analyst