

SECRET

INSCOM
GRILL FLAME
PROGRAM

SESSION REPORT

CLASSIFIED BY:MSG,DAMI-ISH
DATED: 051630ZJUL78
NOT RELEASABLE TO FOREIGN NATIONALS REVIEW ON: Aug 2000

SECRET

Copy 1 of 2 copies

SECRET

SUMMARY ANALYSIS

SG1A

REMOTE VIEWING (RV) SESSION D-4

1. (S/NOFORN) This report documents a remote viewing session conducted in compliance with a request for information on a target of interest. The mission was to describe a tent at a designated intersection [REDACTED]
2. (S/NOFORN) The remote viewer's impressions of the target are provided as raw intelligence data and as such have not been subjected to any intermediate analysis, evaluation or collation. Interpretation and use of the information provided is the responsibility of the requestor.
3. (S/NOFORN) The protocol used for this session is detailed in the document Grill Flame Protocol, AMSAA Applied Remote Viewing Protocol (S), undated.
4. (S/NOFORN) Following is a transcript of the viewer's impressions during the remote viewing session. At TAB A are drawings made by the remote viewer reference his impressions of the target site. At TAB B is target cuing information provided the remote viewer.

NOT RELEASABLE TO FOREIGN NATIONALS

SECRET
ORCON

~~SECRET~~

TRANSCRIPT

REMOTE VIEWING (RV) SESSION D-4

TIME

#66: This will be a remote viewing session for 0900 hours,
1 August 1980.

Relax and concentrate now. Relax and focus your attention on the southwest corner of the intersection in the photograph I have shown you. Relax and focus your attention. Focus your attention on the southwest corner of the intersection in the photo I have shown you. Position yourself so that you may see clearly the southwest corner of the intersection, and describe your imagery to me.

PAUSE

+03 #8.5: I have an impression of a...it's a sidewalk...food concession... on the curb.....seems to be...a street gutter, curb drain... about 6-8 feet from the corner...something...display...next to building.....there was a, was a display next to the building....metal objects, artifacts, brass...about four feet, four or five feet...curb food concession.....I see...looks like a... kiosk...there's something green after that....an impression of a....there's some kind of pole to the east of the concession on the corner.....

#66: What is it that's green?

#8.5: I saw the green, I think it was some kind of vegetation, to the west of the...structure, I can't tell if it's on wheels, or... sitting on the pavement, but there's green...green to the...west.. about 15-20 feet....

#66: Okay, let's try positioning over the target. Move up in the air and look down obliquely at the target, and work your way up and down the block there. Tell me what, the things you've told me about, tell me what they look like from this angle.

#8.5: The food concession looks like it has a...canvas cover...parasol, cover, sun cover.....cover from adjacent building sticks out over sidewalk so....photograph I just saw shows...sharp corner to that building, but I see an entryway...in that corner, which is contrary to...photograph I saw...

#66: Okay, tell me a little bit more about this food concession place.

#8.5: East end of it...appears...very open, you can see into...west end seems....masked, you can't see in very well, it's very

~~SECRET~~

~~SECRET~~

- #8.5: tiny...four or five feet wide...eight, nine feet long...I...see a cover on it...also see...some kind of parasol shape..... attached, very nearby....
- #66: Tell me the raw imagery that makes you say this is a food concession.
- #8.5: I thought I saw...some kind of sweets, and peoples hands standing very close to it. When you spoke I was...looking around inside of the thing...and I didn't see food.
- #66: What did you see?
- #8.5: Periodicals...newspapers.....one...one person...doesn't seem to... be doing much...I saw people standing there with food, I thought... some kind of sweet pastry thing.
- #66: Okay. Move outside on the sidewalk again and look at this and tell me the nature of the construction of this that you're looking at, what is the...
- #8.5: I'm seeing two...two wheels towards the west end of the bank. I still think it's 6-8 feet, maybe a little longer..There's a bicycle leaning against it.
- #66: Of what material is this?....
- #8.5: Metal, I think...it looks like metal...
- #66: Okay. And the top?
- #8.5: Canvas, canvas covered anyway....
- #66: And how close is this to the corner?
- #8.5: About 15 feet.
- #66: Okay. And beyond this, on down, what comes next after this away from the corner? Is there anything else there?
- #8.5: To the west...cylinder shaped box, I thought was some kind of kiosk or something.
- #66: Beyond that?
- +16 #8.5: Beyond that I just saw green..... I see...some kind of.... I don't know, I just an impression of...some kind of...platform...I don't know what it was...
- #66: Move back now to the canvas covered structure near the corner. Move inside the structure. Move inside the structure. Examine the walls of the structure, working yourself very carefully from the right all the way around to the left and describe the walls to me, and anything you might find on the walls.....

~~SECRET~~

PAUSE

#8.5: Difficulty with the....some kind of shells...saw a lot of conflicting garbage...nothing to do with the area...football for example started, moved to the image...but I had the, the distinct feeling that...the north wall...was...configured for observation, to the north and east.

#66: Explain configured for observation.

#8.5: I saw everything that went flying by I...tried to examine it of having something to do with the area...I saw the shells and binoculars...some kind of black boxes and camera equipment, I was looking at the inside of the north wall... which seems rather uninteresting...uninteresting...but I felt there was...opening that I couldn't see that...allowed observation to the north...

#66: Okay.

#8.5: And to the...and to the west and east slightly to the west.

+24 #66: Focus your observations now on the floor. Look down and look around the floor.....

#8.5: All I see is just...a metal frame...but it isn't...a couple... steel plug...nothing of great interest.

#66: Tell me about the steel frame.

#8.5: Appears to be...some kind of textured material with about a... I don't know, two by two foot...kind of rust colored metal frame...and the rough texture's inside the frame too, I... doesn't make much sense.

PAUSE

#66: Okay. What were the other things you saw on the floor?

#8.5: About a three or four inch metal screw in plug.

#66: Okay.... Anything else setting on the- what's the material, what are you standing on? What is that?

#8.5: It's conflicting, but I felt it was...some kind of masonry... if the structure is...temporary, then it must have wood floors, but I feel it is textured, masonry.

+28 #66: Okay. Now, I'm gonna change your focus now. I want you to stand inside where you are right now, standing inside where you are right now, and change your mode of observation from that of objects to activity. Ask yourself what activity goes on in this place. Tell me the answer you receive.....

~~SECRET~~

~~SECRET~~

#8.5: Nothings coming.

#66: Okay. Do a 24 hour time scan from now forward for 24 hours, and look for activity.

PAUSE

#8.5: A very vivid...yellow, mechanical device...first I thought it was a...big bulldozer was sitting at the curb...completely dominated the scene, I lost the structure I was examining..... A lot of power.....sometimes...I lost it...something big and yellow there, it seemed hard and cold, like metal... I suddenly got very sensitive hearing...I felt I could...hear people talking...150-200 feet away...couldn't understand it... couldn't understand what they were saying.....

#66: Okay. In the structure, during the 24 hour time scan, is the structure occupied?

#8.5: I aware of three people...had something to do with...two of them, two of them looked black americans...couldn't get a good look at the third one.

#66: During what period of the 24 hour scan was this?

#8.5: I don't know...it was towards the... first part of the scan, and I was moving from present time out....

#66: Describe these two: age, so forth.

#8.5: About...5'10"...5'9", 5'10"....28-33 years old...the other third person seems...somehow different...I don't know where...he's more aloof, or...something about him is different.

#66: What is this third ones age?

#8.5: The third one...I can't get a handle on him, he seems slimmer and taller...can't seem to...the other two are easy...they're also, but...they're kind of easy to handle, the tall one... I can't get information on him.

#66: What do these people do in this place?.....

#8.5: I don't know.

#66: Explain their actions to me.

#8.5: The two young ones were...busy with something near the north wall, the third one was...southwest corner of the structure facing, facing west, facing away from me, I'm near the, what seems to be the entrance, on the east end.... The second one over seems very bored...the one near me has his back to me and appears to be talking to him.

#66: Okay.

~~SECRET~~

~~SECRET~~

- #8.5: There's a broad shelf, desk like area along the north wall. These two are sitting...sitting there....I don't know what they're supposed to do...but it certainly isn't food.....
- #66: Okay, I have one last question. I would like again to examine the metal frame, tell me how it fits in, the masonry on the floor, it's construction, what it's function is...
- #8.5: Floor, rather cluttered, dirty...debris, and I think this floor might be, might be the street itself, seems to be very hard concrete...there are some bolts, but I think this frame has been there a long time, but I think it can be removed...for...inspection below... I think it's equivalent of a square manhole... but that's ridiculous, I never heard of a square manhole...but I think it can be removed...
- #66: I have no further questions. I'd like to give you the opportunity to comment on anything you feel is important at this time.
- #8.5: My only comment is...it sure has been noisy today.
- #66: Yes.
- #8.5: Very...very disturbing...
- #66: Anything else now before we finish?
- #8.5: I have a very strong feeling that...
- #66: Yes?
- #8.5: The structure is...is not hostile...does not represent a threat... to us. I just...examined it very carefully relative to threat, and I didn't feel any.
- #66: Okay... Any further comments?.... Let's prepare to draw then.
- #8.5: Damn, I felt like a bobbing cork, I just, I'd barely get going and I just bob right up.
- #66: Okay, we're ready to draw now.....
- #8.5: Bad start.
- #66: Okay, we'll try one over again.....
- #8.5: Sidewalk.....I, uh...in certain places there was bolts, what appeared like bolts in the pavement, I don't know what they were. Uh, there's some overhang to this, which...like canvas... um, overhang canvas, indicated by the scallops.
- #66: Okay, well I'll have you draw some arrows and write some words.

~~SECRET~~

~~SECRET~~

- #8.5: Okay, and somewhere, I think right...right along in here...I thought was, uh...parasol shape... And...this hexagonal shape, or square, I'm not sure which, it was kind of like a kiosk...
- #66: Okay... Okay, so label this as corner.
- #8.5: Remember the photograph they showed it square just like I've drawn, and yet I thought there was a entryway directly into the corner, and that bothered me, it was disturbing.
- #66: On this here, let's draw an arrow and call this your canvas covered structure.... Okay. And on page two maybe you can draw me a blow-up of that itself, and tell me about those other little things you got there beside it.....
- #8.5: There's something over in here... And in this area here there was some...scattered bolt heads or something like that. Rusty metal sticking up, and there was some plugs...about four inches in diameter...thought they was closer than that...
- #66: Label those as plugs?.....
- #8.5: And there was a lot of debris and stuff lying around, it wasn't really clean. But this seemed to be cement masonry, very hard...
- #66: Okay..... How about the walls, now, I...you had a whole lot of trouble with the walls, apparently, but there was one area that did-
- #8.5: Oh, there was a...shelf or something...it come out, was along here. I think it was a little wider than that because people sitting in. And I thought there was openings along...openings somewhere along the north wall, it could be opened towards the north... There was two people sitting near this shelf like thing here, I'll draw it again. There was person over in here that I just couldn't get a handle on.
- #66: Why don't you label that as shelf so... Okay... And what was this over here, this square...
- #8.5: I don't know what it was, it was just a little, another little square... I don't know it was attached, or it went all the way through the pavement, or what...
- #66: And these two little things here by the steel frame?
- #8.5: Looked like bolt heads or metal that was cast into the pavement.
- #66: Okay..... And then you saw two people sitting at this shelf thing...
- #8.5: This guy sitting here, with his elbow on the... And there was a guy over here.

PAUSE

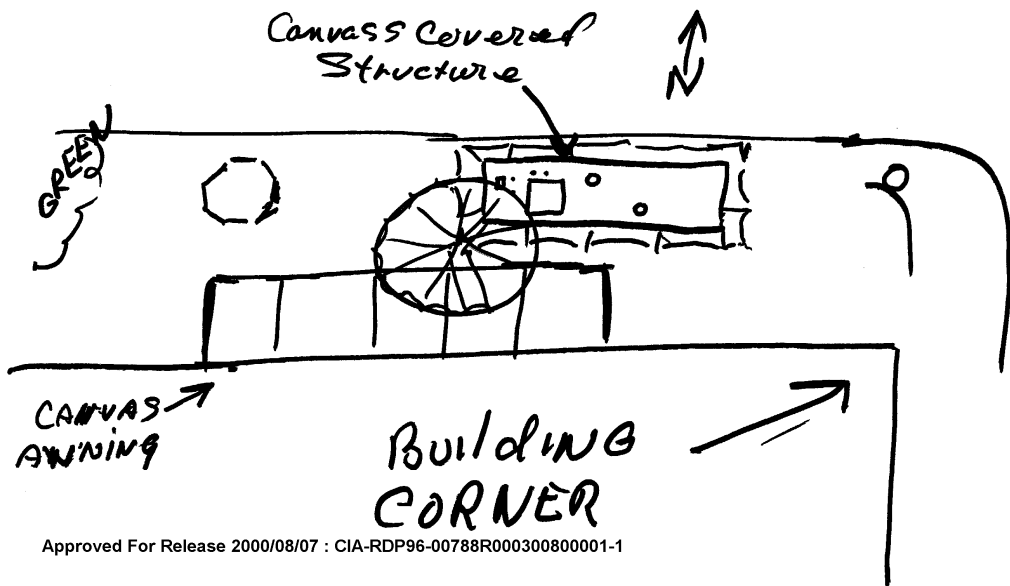
~~SECRET~~

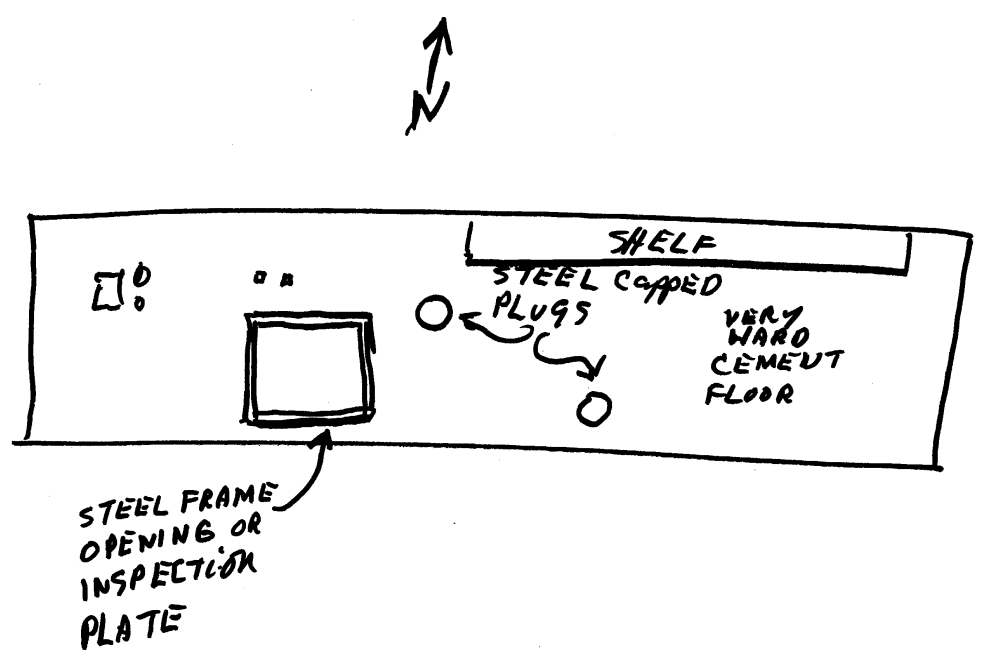
~~SECRET~~

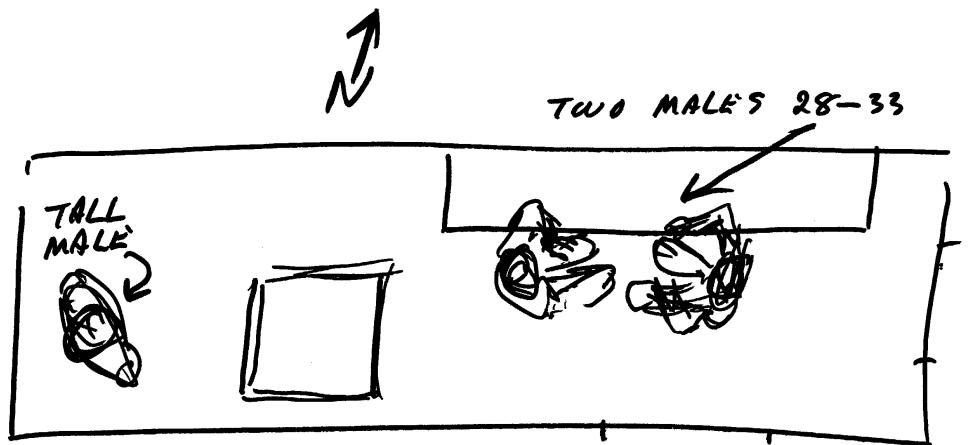
- #8.5: I wrote this person was doing over here, but the person was facing to the west.
- #66: That's the person you couldn't focus on?
- #8.5: Mm-hmm. It was conserve- a different, his attitude and everything was different than these two. These two were rather casual, blase. But this one was, uh...bundle of energy and nerves, I just couldn't bust through, I don't know what was wrong... I somehow thought an entry was...you could get in here, and I thought along here was a way you could get in.
- #66: Okay.
- #8.5: Was there anything else? I don't want to get next to that big yellow thing, it just, uh, it seemed about, you know-
- #66: When I asked you to do your 24 hour time scan you didn't have much luck other than you saw a big yellow thing, uh, maybe in the street outside the thing.
- #8.5: It was very vivid, very strong, but it had nothing to do with the scene...because it so completely dominated the scene that this, this thing here completely disappeared...
- #66: And in the 24 hour time scan, did you know whether or not this thing was occupied for the full 24 hours, or when it was occupied and when it wasn't.
- #8.5: Uh, no, when I first started to do the 24, I started at the present time out, and somewhere the early part of that I became aware of the people in there, so I kept going, and all of a sudden I found myself up in the air looking at this big monstrous thing sitting at the curb. And I didn't know how it got there, and I was disturbed to find it that my structure had disappeared, and uh...everything, nothing seemed right.
- #66: Okay, well, we know you had some difficulty with this session, disturbed by the outside noise in the hallway, and the noises outside the building... Anything else you want to comment on?
- #8.5: No, it just, one of the worst session I've had...it felt like one of the worst sessions I've had in a long time.
- #66: Okay.
- #8.5: Was very sporadic, disjointed.
- #66: Okay, fine.

~~SECRET~~

TAB







TAB

~~SECRET~~

TARGET CUIING INFORMATION

REMOTE VIEWING (RV) SESSION D-4

SG1A

SG1A

1. (S/NOFORN) Prior to the session the viewer was shown the attached map [REDACTED] and an overhead photograph (not included due to classification of the target area). His attention was directed towards the SW corner of the intersection [REDACTED]
2. (S/NOFORN) During the session once the viewer had located the target tent without cuing, he was asked to elaborate on his impressions.

NOT RELEASABLE TO FOREIGN NATIONALS

~~SECRET~~

SG1A

Approved For Release 2000/08/07 : CIA-RDP96-00788R000300800001-1

Approved For Release 2000/08/07 : CIA-RDP96-00788R000300800001-1