

SECRET

INSCOM
GRILL FLAME
PROGRAM

SESSION REPORT

CLASSIFIED BY:MSG,DAMI-ISH

DATED: 051630ZJUL78

NOT RELEASABLE TO FOREIGN NATIONALS REVIEW ON: *July 2000*

SECRET
ORCON

Copy 01 of 2 copies

GRILL FLAME

SECRET

SUMMARY ANALYSIS

EMOTE VIEWING (RV) SESSION CD-89

SG1A

SG1A

1. (S/NOFORN) This report documents a remote viewing session conducted in compliance with a request for information on a target building [REDACTED]. The mission was to describe the function of the building and determine the building security posture from 2400 to 0600 hours.
2. (S/NOFORN) The *remote* viewer's impressions of the target are provided as raw intelligence data and as such have not been subjected to any intermediate analysis, evaluation or collation. Interpretation and use of the information provided is the responsibility of the requestor.
3. (S/NOFORN) The protocol used for this session is detailed in the document, Grill Flame Protocol, AMSAA Applied Remote Viewing Protocol (S), undated.
4. (S/NOFORN) Following is a transcript of the viewer's impressions during the remote viewing session. At TAB A are drawings made by the remote viewer reference his impressions of the target site. At TAB B is target cuing information provided the remote viewer.

NOT RELEASABLE TO FOREIGN NATIONALS

SECRET

ORCON

TRANSCRIPT

REMOTE VIEWING (RV) SESSION CD-89

TIME

#66: This will be a remote viewing session for 0900 hours,
17 July 1980.

PAUSE

#66: Relax and concentrate now. Relax and concentrate. Focus your attention solely and completely on the building in the photograph I have shown you. Focusing, focusing solely and completely on the building in the photograph I have shown you. As you concentrate on this building, move your awareness, your focus, your perception to the building. Move now through space and time to midnight tonight at the building in the photograph I have shown you, and describe the target to me.

PAUSE

+03 #01: Dark wood doors. . . strips of. . . strips of glass. . .
a concrete overhang. . . short. . . recessed entrance doors. . .
Like a reception area on the interior. . . Very dark. . .
It's like, uh, abandoned. . .

+05 #01: Okay. Go back outside and tell me about activity on the
grounds outside the building.

PAUSE

#01: I don't, uh. . . I don't perceive any activity on the grounds.
Think there's activity in the building.

#66: Your first perception was that it was abandoned and now looking for activity you perceive some activity in the building?

#01: Yes.

#66: Describe it to me, please.

#01: I see a. . . see people on a top floor. . . They're like a. . . they're like a conference area, or a large, large conference type room. I see a lot of windows in this room. And the curtains are all open. I have a feeling like the lights are all turned off.

#66: What is the activity you perceived?

#01: Very. . . very quiet, talking like, uh, almost whispered, very muted discussion of sorts, and, uh, some equipment. These people are using some kind of equipment. And they're clustered by windows. . . These are. . . these are people that shouldn't be in the building, it's like they're, they're moving around secretly, in the dark. They're using. . .

~~SECRET~~

- #01: I keep seeing tubular type equipment mounted on, like very short tripods, on a, a table top, or a desk top, or some flat surface that's pushed against the window.
- #66: Okay. We've focused now on midnight, I want you to move from now, move through time, from now, and open your perspective up for the entire time period between midnight and six the following morning. Scan that time area and report the activities significant in that time area.

PAUSE

- #01: I don't, uh, I don't see any different activity, they're just whatever they're doing it's, uh, by these windows. Six o'clock there seems to be, uh, I don't see them there at six. It's like some time between, uh, four and five they pack everything up and leave the, uh, leave the building. Closer to five they leave the building.
- #66: Holding you time focus perspective now, but expanding your awareness to the entire building, and the ground surrounding the building, I'm interested now in acquiring information relative to guards, security, protection, this type of information. Expand your awareness in the time period to cover the entire building and the grounds around the building, exploring this avenue. Report your findings to me.
- #01: I'm getting a . . . getting a really strange sensation, like I'm, uh, like I'm looking at a tremendous amount of time span or something. What I reported earlier, I feel like my time, I'm slipping all over, like I'm spread through a month of days at midnight, or something like that. I get a--
- #66: Are you saying that this activity has happened many nights, rather than one night?
- #01: It's either that or it's gonna happen, that I'm not, I'm not zeroing right or something. I, I'm having, I see the people and the activity in the building, but I get this tremendous feeling that the building's abandoned, like it's completely empty, and I'm having trouble pinpointing this event datewise, it's like it's gonna happen, or it happened already, or it's happened many nights, I don't know. I don't know how to explain that.
- #66: Okay.
- #01: I get a feeling like it's gonna happen. . . Aside from that activity, the, I think the building is totally abandoned, it's like it's empty, and, uh, it has furniture, but, and there's things in drawers and stuff, but, it's like it's been abandoned in a rapid manner, like. . . I get, I get a feeling that, uh, there's a cursory type guard on the grounds.
- #66: Explain cursory.

~~SECRET~~

~~SECRET~~

- #01: I'm getting flashes of a single guard, sometimes two, but that may be his relief, and he's armed, and he's bored, and he's sometimes on the ground floor interior, and sometimes walking outside.
- #66: All right. How does this guard relate to the activity which you perceived on the upper floor?
- #01: Totally disassociated.
- #66: Is he aware of this activity?
- #01: No. Totally unaware.
- #66: Let us move now in time to daylight hours. Move to noon the following day. Noon the following day. And describe the building, the activity of the building at noon.

PAUSE

- #01: I see a different group of people now. Not many, though, it's like . . . less than ten. And on the ground floor, in a large, large room left of the reception desk, or whatever it is . . . good-looking furniture, like easy chairs and things, carpeting. And they're sitting at, uh, desk or something that's been pushed together, made like a large, large table top. And they're reading papers or something. Going through folders, reading papers. I'm having . . . I'm getting what I don't think it's overlay, but . . . I'm having like this deja vu feeling about way back when they first went to the American Embassy, and they, and I was seeing a lot of folders being gone through, some thrown on the floor, and some being kept. And I'm getting that same, I feel like I'm seeing the same scenes. But it's not an American building.
- #66: What is the function of this building?
- #01: I have this . . . The word embassy is screaming at me, but I don't, it's not an embassy. I don't know, I get an embassy function of some sort, but it's, it's not American. I don't see any kind of a takeover or anything, just a . . . like it's been abandoned, and they're going through it.
- #66: Who's going through it?
- #01: Iranians.
- #66: And these are a different set of people than the ones you saw during the, what you perceived to be the future midnight hours?
- #01: Right. It's like these have a function, they come in on a daily basis, doing whatever they're doing with these files. I had a different feel for the group of people in the mid-night hours, they're like, uh . . . they're like a different . . . different some way. I don't know, I don't know what way they're different.

~~SECRET~~

3

~~SECRET~~

- #66: I have no further questions about this target area, but I'd like to give you the opportunity to spend some time and comment as you see fit.
- #01: It's almost. . . the building's almost like it's original intent has been abandoned. It's, what it's there for has been abandoned, and there's now a duality type purpose where two groups are using it, both, well, the nighttime group is unknown to the daytime group. but now visa versa. And ~~their~~ functions are different. And I think the guard also only knows of the daytime group. That's all I, I have trouble with the, uh, locating the nighttime group, and date, feel for date. It's like it hasn't happened yet. It's very strange feeling, because that's the only event that's gonna happen there, it's. . . I have trouble locating it in time. That's all I get.
- #66: All right, fine. Let's return your perceptions now to me here, and let's prepare to draw the images you have.
- #01: When I, uh, drawing one, when I first came on the building here, the first impression I had was these twin wooden doors. And they're like real old fashioned doors, but well finished. See if I can get a, as representative a drawing here as I possibly can. Felt like they had some glass sections, in their upper portion. Reminded me a lot of the old English country manor type doors. These elongated designs were the glass windows. And the rest of it's like, uh, well I'll darken the windows in in black, that way we know it's glass, the rest of it's wood, like some kind of wood design.
- PAUSE
- #01: I'm taking quite a while on the doors, cause that's probably the most identifiable part about the entrance. Some design on the doors.
- PAUSE
- #01: You know, it would be like the, the big old heavy wooden oak doors in an English manor of some sort.
- #66: Okay.
- #01: And they were in a, uh, a recessed area that had a, like a short concrete overhand that came out. Just like a, just a rain stop, that might stop the rain from falling on your head while you waiting for the things. It had like this kind of design in concrete on the front, with these steps that came down to a sidewalk. And there was the big old fashioned windows on both sides, this sort of thing. That's pretty much the way the entrance area looked. Yeah, this was graystone. And that's essentially the way the entrance looked, you know, this was pretty big, and that kind of went back. And then after you

~~SECRET~~

- #01: went inside, I got the feeling like the entrance way went like this, it's very deep, like it went all the way to the back of the building, possibly even to a back door of the building. Kind of like there was a reception counter or big table of some sort sitting out in front. We'll call it a reception counter. There was like two elevators, over here. And, uh, there was a double door entry to a large room on the left. And in that room, they, that's were the second group of people, or the daytime group of people that come in on a daily basis, they were going through these file folders and stuff, that's where they're working. I don't really have much on that room, other than the fact they shoved some things together to make a large, flat surface, working area.
- #66: Okay, that's fine.
- #01: Some easy chairs.
- #66: How was it you developed, from the entrance way and the lobby area, how was it you developed into the upstairs room in the midnight hour?
- #01: Oh, okay. What happened was, I had the feeling like whatever this building was intended to be, that purpose was abandoned, along with all the people that were doing whatever they were doing in this building. And I had a real, I had a real feeling that it was some kind of an embassy type function, but it wasn't an American embassy type function. That it was some other embassy or something.
- #66: This was later in the session, but initially in the session you were in the lobby, and then your descriptions-
- #01: Oh, okay, uh-
- #66: -started going upstairs.
- #01: Yeah, well I was supposed to be targeting at 12:00 midnight, today's date, and I was confused in what exactly I was supposed to be looking for. You know, was it a description of the building, it's contents, it's exterior, or what was happening, so I decided that I would probably obtain more information by for an event that might be occurring. And as soon as I looked for an event I found myself in this upstairs room, and I got the impression like I was no longer on today's date, that I was there at midnight, but not on today's date, that I had gone forward in time some distance. And then the event that I actually witnessed in the top room was sort of a covert or secretive event that the normal daytime crew in this building are not familiar with or knowledgable of, and that it perhaps recurs, it's a recurring event.
- #66: Okay, can you draw this room for me that these people were in?

5

~~SECRET~~

~~SECRET~~

#01: Yeah, I, I felt like it was like second room in from the corner. This being a, I'm not sure, but I got a feeling like, uh, possibly right rear, okay. And at this room, there's a room here or something. And this room is windows all the way down. And there was a table or something that was shoved up against the, might have been a desk, you know, but it's a big flat surface, it was shoved up against the windows. And there were tripoded items sitting here on this flat surface. I don't know what it was or anything, but there was, uh, there was a, uh, I'll mark these with stars, there was an individual here, and there was a individual, and there was a person standing next to him, and there was another person over him. It was like three or four people, and they were talking in muted tones, you know, very quietly. They were working in the dark and they were using this tripoded equipment. Down in the left hand corner here I got a feeling of two things. I got a feeling of, uh, like these spotlight things that they use for shows, that kind of a feeling. And I also got a feeling for, this is very strange, a light metallic red thing. It was circular in shape, and it had small protrusions coming out like this, and there was, uh, there was some kind of a, I don't know, like a small silver type thing on the tips going all the way around. And I don't, I don't know what that is.

#66: Okay.

#01: Red, and metallic. And all I know is that this was tubular, and this tripod mounted.

#66: All right. I ask you to address yourself towards, uh, guard or security personnel in and around this building in the mid-night hour, and you, at first you were reluctant to talk about this because you felt so strange about your time factor with these other people.

#01: That night, and I, uh, I had this, this, my first impression which was really strong was that wow! this is an abandoned building and they didn't even pack all the furniture and stuff up in it, you know, it's just like they grabbed whatever important papers were important to 'em, shoved them in suitcases and walked out, and just left everything sitting, you know, like it was just a totally abandoned building. And I was, you know, and, so when you said look at the exterior, this, this abandonment was *carrying* over, and I was having a lot of trouble shaking that. And then later when I went and looked for a guard type thing I got an impression that there was a guard that was working inside and outside areas, you know, that people had, you know, like the front doors left open, and he'd go and go and sit in a room, and, just inside, and he'd wander around outside for a little bit.

#66: Okay. Now you used the word cursory to-

#01: Yeah, like, you know, like he could care less, like, uh, it's

~~SECRET~~

~~SECRET~~

- #01: sort of like your night watchman on the railroad yard type of guard type of guard, you know, where his entire function is to get through the night, with as little inconvenience as possible. Like, uh, why would anybody want to do anything to this building, you know, and he's completely oblivious to the people on the top floor doing what ever these future events, or these recurring events are going to be.
- #66: Okay.
- #01: I guess that's it.
- #66: Any more comments you want to make about the daytime activity? I want to kind of press you a little bit, because obviously this is a four story building with many, many floors and areas and yet you have not talked about it.
- #01: Yeah, and again during the daytime time period I felt like I was there on today's date, at 12:00 noon. And I felt like there was less than ten people in the building, and I still had that abandoned feeling, and they were uust in this large room, they were using this large room to consolidate, collect, go through, *correlate*, and, you know, evaluate files or read files. I'm not sure if that's a, you know, if they just didn't, uh, say okay, we can use this building and this room to do this work, or if they're going through files in that building, I can't tell which.
- #66: Okay.
- #01: But that's what they're doing there. I had a lot of deja vu there because I remembered a scene exactly like that from before, when the American embassy was first taken over.
- #66: Okay, now this, I'd like to examine just for the sake of argument, this abandoned feeling. If I were to come upon a building at nighttime and everybody had gone home, it would look to me as though it were abandoned, there was furniture in place, but no people there, and I feel as though what you're telling me is it's something stronger than that. It's a, it's different than people have just gone home at night.
- #01: Oh, yeah. The reason for the building, the reason for everything in it has been abandoned. Okay? The reason for which it was built, and it's main function as a building has been abandoned.
- #66: And what do you assume that function is, or was?
- #01: I had a very strong embassy feeling, and I don't know how to qualify that. I know it's not an American embassy, for obvious reasons, but I had a really strong embassy feeling for some reason. And I don't know how to qualify that. Maybe it's a political type building that's been abandoned. I don't know. I would hesitate to say political, but I was getting

~~SECRET~~

~~SECRET~~

#01: a lot of deja vu, a lot of, you know, it's like the word embassy was screaming in the back of my head, and I had to say it, I don't know why.

#66: Okay.

#01: And that's it.

#66: Anything else at all you'd like to add about this?

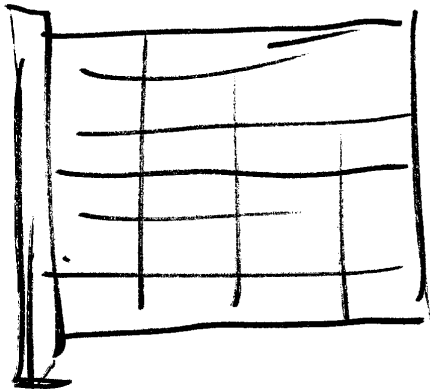
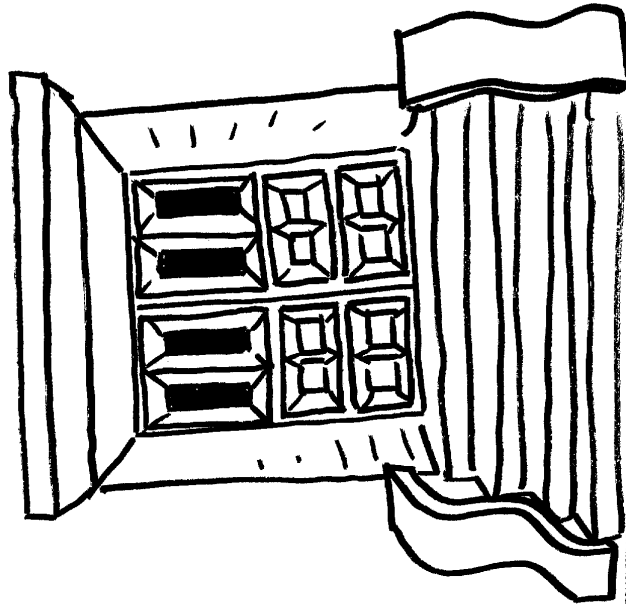
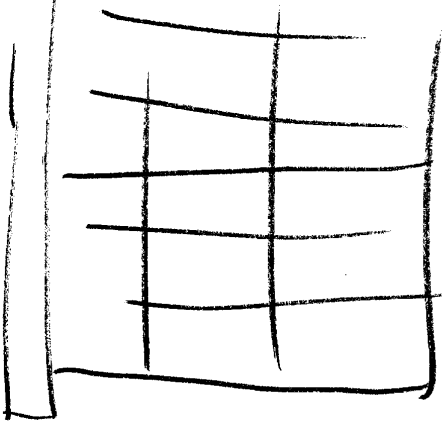
#01: No.

~~SECRET~~

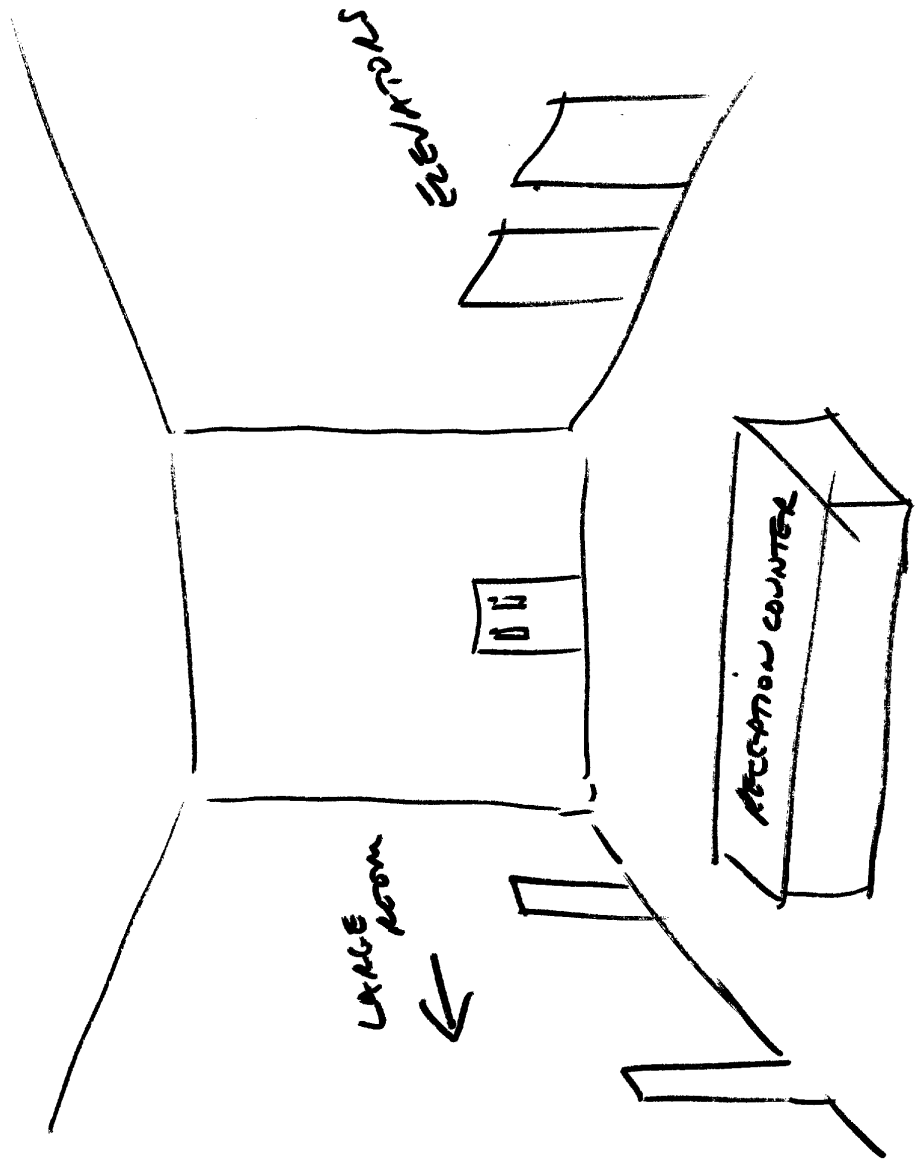
TAB

①

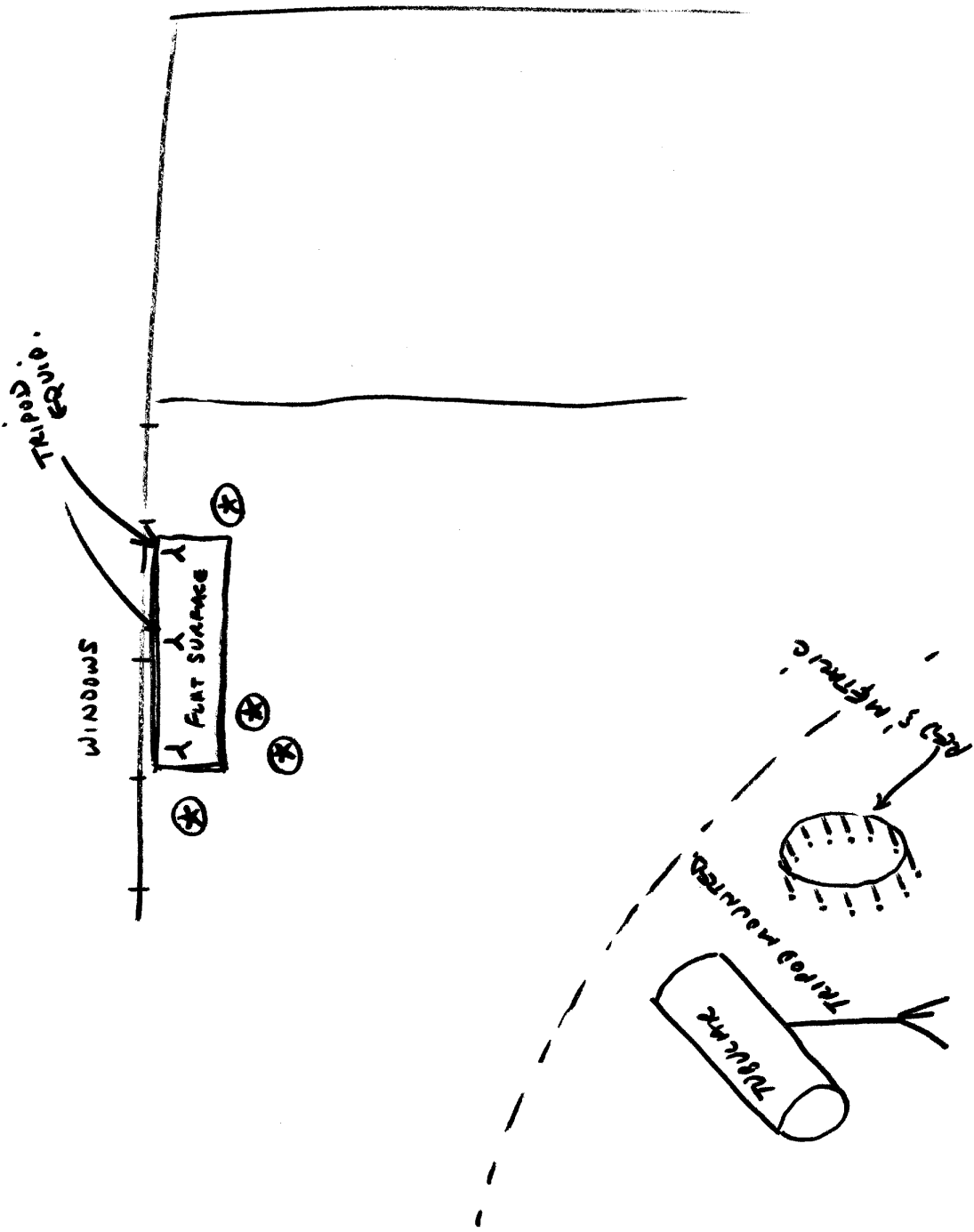
GRAY STONE



2



POSSIBLY
RIGHTLY



TAB

SECRET

TARGET CUING INFORMATION

REMOTE VIEWING (RV) SESSION CD-89

SG1A

1. (S/NOFORN) Prior to the session the viewer was shown an overhead photograph [REDACTED] and told that his target was the building indicated. The photograph is not included herein due to it's classification.
2. (S/NOFORN) During the session the veiver was asked to focus on the time period at the target from 2400 to 0600 hours. He was encouraged to elaborate on his descriptions of the target building.

NOT RELEASABLE TO FOREIGN NATIONALS

SECRET

ORCON