

The Inland Navigation between the Rhein and
Oder in 1968.
MÜNCHEN, GER, Internationale Transport Zeitschrift
no 17, 25 April 1969.
DEA LN 1258-69

sci/navigation
oct 69

394,271

The Save-Danube Canal and Its Importance Within the
Framework of the Danube Navigation System.
GERMAN, per, International Transport Zeitschrift,
12 Dec 1969, pp 5910-5913.
DIA LN 84-71

March 71

Expansion of Push Barge Shipping in the DDR (East
German Democratic Republic).
GERMAN, per, International Transport Zeitschrift,
23 Oct 1970.
DIA LN 568-71

Aug 71

Reorganization of General Cargo (Package Freight)
Shipping.
GERMAN, per, Internationale Transport Zeitschrift,
8 January 1971.
DIA IN 945-71

Sept 71

Do Inland Waterway Tankers Still Have a
Future, by Hans-Ulrich Schaefer, 9 pp.
GERMAN, per, Internationales für Verkehrswesen,
No 5, Jul-Aug 1966, pp 155-159.
DIA LN-167-67

Sci-
May 67

326,194

European Motorways - First Stage of a European
Road Building Policy.
GERMAN, per, Internationales Verkehrsvesen,
Jan-Feb 1969, pp 5-8.
DIA IN 12-70

Sci-Mech
Oct 69

394,571

International Intermodal Traffic.
GEMAN, per, Internationales Verkehrswesen, March 1971.
DIA IN 187-71

Oct 71

Swiss Armor-Development and Future, by Herbert
Wanner, 19 pp.
GERMAN, per. Internationale Wehr-Revue, Vol 9,
No 3, June 1971, pp 263-267.
ACSI-X-1883

May 72

Sweden Tests the Tank Destroyer 1KV 91,
by R. M. Ogarkiewicz, 10 pp.
GERMAN, per. Internationale Wehr-Revue,
Vol 9, No 3, 1971, pp 269-270.
ACSI-K-1884
FSTC-HT-23-1370-72

Mar 73

The French 20mm Automatic Cannon M621,
12 pp.
GERMAN, per. Internationale Wehr-Revue, Vol 9,
No 3, 1971, pp 271-273.
ACSI-K-1897
FSTC-HT-23-1361-72

Apr 72

Selected Articles. 28 pp.
GERMAN, per, International Wirtschaft,
No 19, 10 May 1968; No 49, 6 Dec 1968.
DIA LN 670-69

Sci-Misc
June 69

383,495

Selected Articles.
GERMAN, per. Internationale Wirtschaft, Vienna.
No 44, 31 Oct 1968, pp 1-9.
DIA IN 436-69

Sci-Misc
Jan 69

372,693

Rapid Expansion of Soviet Auto Industry
Described, by V. M. Petrov, 5 pp.
GERMAN, mp, Internationale Wirtschaft,
Vienna, 7 Nov 1969.
JPRS 49528

Sci-Mech, Ind, Civ & Mar Engr 399,298
Jan 70

1000
2000
Oct 70

1000
2000
Oct 70

Numerical Calculations of Transport in Si Systems,
by G. Forstner.
GERMAN, per. Intern Wissenschaftliches Kolloq der
TH Ilmenau, 1965, pp 43-45.
*NBS TT 70-57450

Sci-Mat
Aug 70

Formation of Gas Bubbles in the Organism in
Decompression, by K. G. Muller, S. Ruff,
GHEMAN, per, Int. Z. Angew Physiol, Vol XX,
1965, pp 521-544.
*Dept of Navy/NBS

Sci-Biol & Med Sci
Feb 66

The Effect of Various Muscle lengths at Rest
on the Rate of Increase in Muscle Strength
Thorough Isometric Training, by W. Rohmert,
H. Neuhaus, 18 pp.
GERMAN, per, Internat'l Z fuer Angewandte
Physiologie, Einschliesslich Arbeitsphysiolo-
gie, No 20, 1965.
Dept of Navy Tr 4425/ONI Tr 2026

Sci - Eng
Jan 66

294,500

Energy Balances of Persons Without
Physical Activity and Concentrated Rations,
by Von W. Nirths, 14 pp.
GERMAN, per, Int. Z. Angew Physiol
Einschl Arbeitsphysiol, Vol XXI, 1965,
pp 230-246.
ACSI J-0106
ID 2834008866

Sci-B&M
Jul 66

304.235

Differences in Strain Exhibited by
Women Working During Early and
During Late Shifts, by E. Groll.
GERMAN, per, Internationale Zeitschrift
fuer Angewandte Physiologie
Einschliesslich Arbeitsphysiologie,
Vol 21, 1965, pp 305-312
NTC 72-11722-06S
NASA TT F-11,808
GOVERNMENT USE ONLY
June 72

The Relative Effect of Isometric and Dynamic Training
on Endurance During Dynamic Exertion, by K. Kogi.
GERMAN, per, Internationale Zeitschrift fuer Angewandte
Physiologie, Einschliesslich Arbeitsphysiologie,
Vol 22, No 20, 1965, pp 465-481.
NTC-71-11362-06S

Navy/ONI to 2625 4649644

Nov 71

Studies on Pulse Behavior After Defined Industrial
Noise, by A. Fuchs-Schnuck.

GERMAN, per, Int. Z. Angew. Physiol. Einschl.
Arbeitsphysiol., No 22, 1966, pp 1-9.

*ACSI J-9253

*FSTC-HT-23-240-71

Sci/BGM
Jan 71

FAA

67-11 7AC-3557

R-8237-D

2 May 61

On Circadian Rhythms of Sensorimotor Performance

By: Jansen, Gerd et al

From: International Zeitschrift fur Angewandte Physiologie 22(1):65-83, 1966 (19 pp)

German - est for wds:

Please translate and type 1 original copy. Document can be cut. Please include foreign language title on translation. (DC office please make 3 xerox copies of translation)

K. E. Klein

Comparative Studies on the Physical Capability of
Humans for Muscular Work in Hypoxia and in
Acceleration

INTERNATIONALE ZEITSCHRIFT FUER ANGEWANDTE PHYSIO-
LOGIE, EINSCHLIESSLICH ARBEITSPHYSIOLOGIE, Vol 22,

1966, pp 190-206
NTC-72-14696-06P

Jan 1973

Behavior of Oxygen Tension, Carbon
Dioxide Tension, pH, Standard Bicarbonate
and Base Excess in Arterial Blood Under
Various Forms of Stress, by E. Doll.
GERMAN, per, Internationale Zeitschrift
fuer Angewandte Physiologie,
Einschliesslich Arbeitsphysiologie,
Vol 22, 1966, pp 327-355.
NTC 72-10144-06S
Adsa IFF 12, 988 33 pp
Apr 72

Variations in Arterial Substrate Level Under the
Influence of Physical Work, by J. Keul, E. Doll, 29 pp.
GERMAN, per, Int Z. Angew Physiol Einschl
Arbeitsphysiol, No 22, 1966, pp 356-385.
Dept of Navy NIC Tr 3182

April 71

Circadian Rhythm and Function Diagnostics
of Peripheral Circulation Regulation,
by K. E. Klein.

GERMAN, per, Internationale Zeitschrift
fuer Angewandte Physiologie Einschliesslich
Arbeitsphysiologie, Vol 23, 1966,
pp 125-139.

NTC 72-10288-06P

Nasa TTF 11, 124

Apr 72

The Adjustment of the Circulatory System to Effort, by Florian Gh. Balanescu, Angela Babocea. 22 pp.

GOVERNMENT USE ONLY

GERMAN, per, Intern. Z. fuer Anwes. Physiol. Einschl. Arbeitsphysiol, Vol 23, 1966,

pp 172-190.

NASA TT F-12987

NTC 71-16423-065

sci/b and m
sept 70

**Theory of Decompression Sickness and Its Appli-
cation in Diving Tables, by S. Ruff,**

D. G. Mueller.

**GERMAN, par, Int Zeit Angew Physiol Einschl
Arbeits Physiol, No 23, 1966, pp 251-292.**

NAV/NIC/Trao-2887-69

Nav/Nav Ship TR-1183

Sci-B&M

Oct 69

393,252

English Title Unknown, by H. Melchior.
GERMAN, per, Internationale Zeit für Angew
Physiologie Einschliesslich Arbeitsphysiologie,
Vol 24, 1967, pp 68-80.
*NASA TR F-12,701

Nov 69

Agency: DIA

P.O. Number: IAG-5574-U

R-12744-D

10 Feb. 71

Title: Einfluss von wiederholten vierstündigen, intermittierenden, sogenannten rosa Einsparungen auf catecholamin ausschüttung und Leistungsfähigkeit.

Author: Wolfgramm, G. und H. H. T. T. T.

Source: Int. Z. angew. Physiol. einschli. Arbeitsphysiol. Vol. 24:351-362, 1967.

Language: German

Special Instructions: Translate into English, paste-up charts, etc.

Measurements of the Central Temperature During
Muscular Exercise in a Hot Environment, by
R. Derouane, et al.

GERMAN, per, Internationale Zeitschrift fuer
Angewandte Physiologie, Einschliesslich
Arbeitsphysiologie, Vol 27, 1969, pp 138-143.

NTC 71-13840-06S

NASA TTF 12,541 7 pp GUC

Feb 72

N. Scarperi

*Input and output in the system of thermoregulation
during and rest and exercise*

*GERMAN, Internationale Zeitschrift fuer angewandte
Physiologie, Vol 30, 1978, pp 188-192*

NASA TT F 14,562

COPYRIGHT NOTICE

sept 72

Fuel Composition Affecting Heat Transfer
and Fuel Consumption of Industrial Furnaces,
by K. O. Besse.
GERMAN, per, Internationale Zeitschrift
für Gaswärme, Vol XIV, Dec. 1965, pp 427-436.
NISI 4608

Sci-HQM
May 66

300,951

V. W. Rahlfs

Analysis of Time-Dependent Data in Biomedical
Research.

GERMAN, per, Internationale Zeitschrift fuer
Klinische Pharmakologie, Therapie und Toxikologie,
Vol 5, No 1, 1971, pp 96-109
NTC 72-12642-06B

sept 72

Degree of Concentration and Cost Structure of
Sugar Beet Production, by Dr. G. Gerdes, 10 pp.
GERMAN, per. Internationale Zeitschrift der
Landwirtschaft, No 6, Nov-Dec 1966, pp. 587-590.
JPRS 40533

~~E~~E-Germany
Sci-Agric
Apr 67

319,739

Tasks and Goals of Grain Cultivation in the GDR,
by Dr. H. Kross, 9 pp.

GERMAN, per, Internationale Zeitschrift der
Landwirtschaft, No 6, Nov-Dec 1966, pp. 598-
602.

JPRS 40583

EE-Germany
Sci-Agric
Apr 67

319.740

Measures to Protect Agricultural Land Adopted,
by E. Schramm, 11 pp.
GERMAN, per, Internationale Zeitschrift der
Landwirtschaft, Sofia/Berlin, No 5, 1968,
pp 507-511.
JPRS 47,453

Sci-Agri
Mar 69

375,906

Success Based on Coordination of CEMA Efforts,
by E. Neu, 9 pp.
GERMAN, per. Internationale Zeitschrift der
Landwirtschaft, East Berlin, No 2, 1969,
pp 135-138.
JPRS 48364

EE-E Germany
Econ
J1 69

386,191

More Efficient Forage Management Stressed,
by E. Gerstenberg, G. Schulz, 12 pp.
GERMAN, per. Internationale Zeitschrift der
Landwirtschaft, Sofia/Berlin, No 3, May-June
1969, pp 315-319.
JPRS 48669

EE-1 Germ
Doon
Aug 69

390.717

Suitability of Kirovets K-700 Wheeled
Tractor for GDR Assessed, by E. Stieglitz,
6 pp.
GERMAN, per, Internationale Zeitschrift
für Landwirtschaft, East Berlin, No 3,
1978, pp 350-353.
JPRS 54521

Nov 71

Examination for determining muscle atrophies,
by Th. Hettinger.
GERMAN, per, International Zeitschrift fur Physio-
logie einachi Arbeitphysiologie, Vol 16, 1965,
pp 52-56.
NASA TT F 14,094

Feb 72

The Vitamin E Activity of Different Tocopherol
Metabolites by the Hemolysis Test, by
J. Proll and H. Schmandke.
GERMAN, per, Internationale Zeitschrift fuer
Vitaminforschung, Vol 39, 1969, pp 304-307.
NTC 71-13841-06P

Feb 72

Internal waves, chapter 2, part 23, by
W. Krauss,
GERMAN, per. Interne Wellen, pp 149-186,
1966.
APL/JHU-T-2558

Oct 71

Concerning the Application of the Turner
Classification of the Diffusion Categories in the
Middle European Climate Region, by G. Polster.
GERMAN, rpt, Interner Bericht Zentralabteilung
Strahlenschutz der Kernforschungsanlage Juelich,
No 24, February 1967.

*AEC

Atmos Sci
July 69

Agency: DHDN/PIS
P.O. No. 1848 72-2959

R-15051-D
18 May 1972

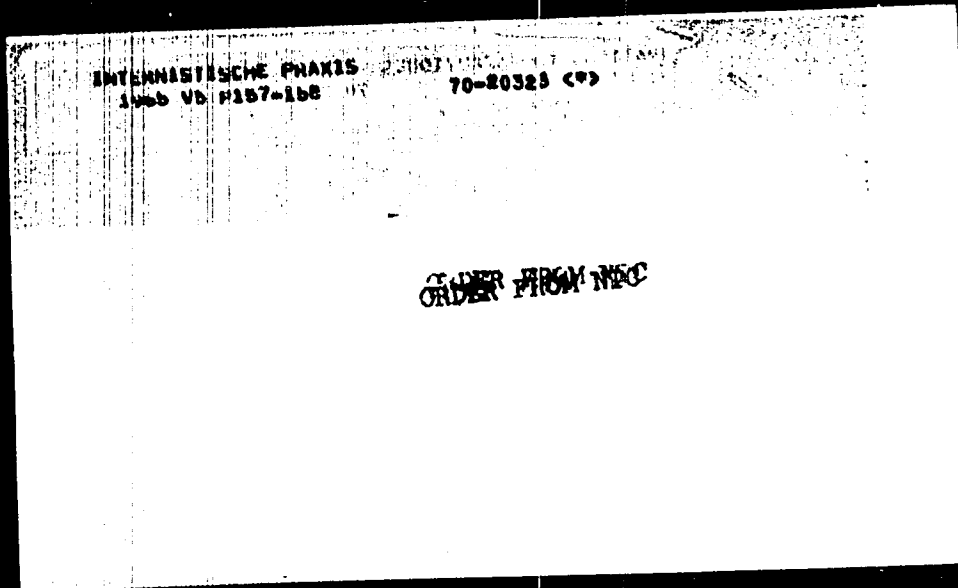
Title: Epidemiologie und Entdeckung des Bronchialcarcinom

Author: F Trendelenburg, W. Mall

Source: Der Internist, Vol 11, #9, 1970

Language: German

Instructions: Please translate, type single space,
no paste-up leave space, translate all captions.



Introduction to the Hydrodynamics of Porous Bodies, by St. I. Gheorghita. 212 pp.
ROMANIAN, bk, Introducere in Hidrodinamica Corpurilor Porose, 1969, pp 1-210.
AIR/FTD-HC-23-581-70

Aug 71

Role of Technical Schools in Preparing Labor Force,
by Vasile Miron, 13 pp.
ROMANIAN, Rev. Informatul Profesional si Tehnic,
Bucharest, June 1970, pp 3-13.
(RIS 5124)

El-Towania
Eton
Sept 70

Importance of Work in Production for Training
Cadres for Economy, by George Moldovan, 10 pp.
ROMANIAN, per, Invatamantul Profesional si Tehnic.
Bucharest, No 5, May 1972, pp 2-7.
JPRS 56698

Aug 72

The Invention and Innovation Movement in
Rumania, by B. Ambrus, 5 pp.
ROMANIAN, per, Inventii si Inovatii, Vol I,
No 1, Jan 1966, pp. 3-4.
JPRS 35350

EE-Rumania
Econ
May 66

300,235

Protection of Original Technical Achievement
and the Economic Importance of This Protec-
tion, by L. Marinete, 7 pp.
ROMANIAN, per, Inventii Si Inovatii, Vol I,
No 1, Jan 1966, pp. 5-7.
JPRS 35350

EE-Romania

Econ

May 66

300,236

Technical and Scientific Conference on Prob-
lems of Invention of the State Office for
Inventions, by G. Petrescu, 10 pp.
RUMANIAN, per, Inventii Si Inovatii, Vol I,
No 1, Jan 1966, pp. 14-18.
IPRS 35350

EE-Romania

Econ

May 66

300,237

Rumanian Inventions in the Fields of Mining,
Coking, Materials Testing, Particle Accelera-
tors, and Chemistry, by E. Pau, 10 pp.
HUMANIAN, per, Inventii si inovatii, No 2,
Feb 1966, pp. 41-45.
JPRS 35854

EE-Rumania
Sci-NS/Tech
Jun 66

303,028

Trade in Licences, by M. Livescu, 6 pp.
HUMANIAN, per, Inventii si inovatii, No 2,
Feb 1966, pp. 54-56.
JPRS 36088

RS-Romania
Econ
Jul 66

304,814

Problems Related to the Patent Purity of Equip-
ment Designed by Design Institutes for Chemical
Plants, by S. Lupan and M. Rothenberg, 9 pp.
RUMANIAN, per, Inventii si inovatii, No 2,
Feb 1966, pp. 68-72.
JPRS 36082

EE-Rumania

Econ

Jul 66

304,753

Aspects of Resolving Invention Problems in the
Chemical Industry, by Elena Bedivan, 6 pp.
RUMANIAN, per, Inventii si Inovatii, No 4,
Apr 1966, pp. 132-134.
JPRS 36189

KE-Romania

Recon

Jul 66

304,677

Need for Patent Research in Rumania, by I. Pau
and C. Negoita, 5 pp.
HUMANIAN, per, Inventii si inovatii, Vol 1,
No 6, June 1966, pp. 201-204.
JPRS 37254

EE-Rumania
Econ
Sept 66

311,064

Problems on the Application of Rumanian
Inventions Abroad, by Alexandru Civreanu, 7 pp.
RUMANIAN, per. Inventii si Inovatii, No 2,
Feb 1967, pp. 61-63.
JPRS 41159

EE-Rumania
Econ
Jun 67

328,431

New Rumanian Patent Legislation, by
Tataru M. Augustin, 7 pp.
RUMANIAN, per, Inventii si Inovatii,
Bucharest, Feb 68, pp. 41-44.
JPRS 45,345

EE(Rumania)
Political
May 68

357,762

Rights of Inventors in Light of New Legislation,
by I. Cămanita, 14 pp.
RUMANIAN, per, Inventii Si Inovatii, No 3,
1968, pp 81-87.
JPRS 45590

EE Rumania
Pcl
June 68

359,540

New Trade Mark Regulations in Rumania, 12 pp.
RUMANIAN, per. Inventii si Inovatii, Apr 1968.
pp 140-145.
JPRS 46,130

EIE Rumania
Pol
Aug 68

362,863

New Legislation Establishes Special Fund,
by D. Zaharia, 5 pp.
RUMANIAN, per, Inventii si Inovatii, Jun 1968,
pp 201-202.
JPRS 46,348

EE/Romania
Econ
Sept 68

366,557

New Legislation on Inventions Reviewed, by
D. Zaharia, 5 pp.
RUMANIAN, per, Inventii si Inovatii, Bucharest,
Jan 1969, pp 8-10.
JPRS 48056

EE-Rumania
Pol
Jun 69

382,093

Legal Treatment of Licensing Examined, by
V. Iancu, 12 pp.
RUMANIAN, per, Inventii si Inovatii, Bucharest,
No 5, May 1969, pp 175-180.
JFRS 48873

EE-Rumania
Pol
Sept 69

392,505

Publication of Information Disclosed, by
James H. ...
...
... July 1970. pp 29-35.
J28 5103

RE: ...
...
May 70

Invention, Innovation Movement 1966-1970,
by I. Marinete, 7 pp.
ROMANIAN, per. Inventii si Inovatii,
Bucharest, No 4, Apr 71, pp 121-124.
JPRS 53596

Aug 71

Patenting of Inventions Discussed, by
L. Marinete, 11 pp.
ROMANIAN, per, Inventii si Inovatii,
Bucharest, Sep 71, pp 321-325.
JPRS 54865

Feb 72

Data on Inventions Given, by Lucian Marinete,
5 pp.
ROMANIAN, per, Inventii si Inovatii,
Bucharest, No 10, Oct 71, pp 361-363.
JPRS 55127

Feb 72

Development of Utility Aviation Described,
by Ion N. Iacovachi, 12 pp.
ROMANIAN, per, Inventii si Inovatii, Bucharest,
No 7, Jul 72, pp 268-273.
JPRS 57510

Nov 72

Development of Czechoslovak Advanced-School
Facilities, by Dr. Josef Tuma, 14 pp.
GOVERNMENT USE ONLY
CZECH, per, Investicni Vystavba, Vol IV,
No 7, July 1966, pp. 214-217.
JPRS GUO 2160

EE-Czech
Soc
Oct 66

312,387

Agricultural Investments Under New System, by
Jaroslav Houdny, 9pp
GOVERNMENT USE ONLY
CZECH, per, Investicni Vystavba, Vol 4, No. 10,
October 1966, pp 289-292
JPRS GUO 2286

EE-Czech
Econ
Jan 67

318,047

Documentation of Construction Projects Accord-
ing to Decree no 107/1966 of the Basic Law and
Purchaser-Supplier Relations, by Milan Cap, Voj-
tech Kyjovsky, 20 pp.

GOVERNMENT USE ONLY

CZECH, per. Investicni Vystavba, No 8, Aug 1967,
pp 232-38. ^c

JPRS GUO 2598

EL-Czech

Boen

Nov 67

343.770

New System of Economic Management and
Investments, by Ljubomir Texl, 12 pp.
GOVERNMENT USE ONLY
CZECH, per. Investicni Vystavba,
Vol. VI, No. 1, Prague, Jan 68,
pp. 10-13.
JPRS GUO 2736

EE (Czech)
Economic
March 68

352,776

Investment Construction in 1968-1970, by
F. Grosman, 12 pp.
GOVERNMENT USE ONLY
CZECH, per, Investicni Vystavba, Prague,
No. 2, 1968, pp. 35-37.
JPRS GUO 2790

EE(Czech.)
Economic
May 68

357,949

Shortages Hamper Highway Construction in Czech-
oslovakia, by Josef Moc, 14 pp.

GOVERNMENT USE ONLY

CZECH, rpt, Investicni Vystavba, Prague, Dec
1968, pp 361-367.

JPRS/L 2977

Sci-Mech
Mar 69

374.967

More Funds Released for Housing Industry,
by Zdenek Hetzer, 6 pp.
GOVERNMENT USE ONLY
CZECH, par. Investicni Vystavba, Prague,
Feb 1969, pp 35-36.
JPRS GUD 3047

EE-Czech
Econ
Jul 69

384,777

Integrated Programing for Design Work Discussed,
by Bohumil Vlk, 14 pp.
GOVERNMENT USE ONLY
CZECH, per, Investicni Vystavba, Prague,
Feb 1969, pp 41-45.
JPRS GUO 3047

Sci-Elect & Elect Engr
Jul 69

384,775

Federal Investments Problems Discussed, 5 pp.
GOVERNMENT USE ONLY
CZECH, per, Investicni Vystavba, Prague,
No 3, 1969, pp 67-68.
JPRS GUO 3051

EE-Czech
Econ
Jul 69

384,940

Service Industries Problems Analyzed, 9 pp.
GOVERNMENT USE ONLY
CZECH, per, Investicni Vystavba, Prague,
No 4, 1969, pp 99-102.
JPRS GUO 3072

EE-Czech
Econ
Jul 69

386,297

Housing Problem Solutions Described, by
Ota Hobat, 8 pp.
GOVERNMENT USE ONLY
CZIECH, par, Investicni Vystaviz, Prague,
No 4, 1969, pp 103-105.
JPRS GUO 3072

Sci-Mech, Ind, Civ & Mar Engr
Jul 69 386,298

New Construction Regulation Explained, by
Kamil Corvany, 5 pp.
GOVERNMENT USE ONLY
CZECH, per, Investicni Vystavba, Prague,
No 4, 1969, pp 117-118.
APRS GUO 3072

Sci-Mech, Ind, Civ & Mar Engr
Jul 69 386,303

Designers Criticize New Regulation, by
Josef Novak, 7 pp.
GOVERNMENT USE ONLY
CZECH, par. Investicni Vystavba, Prague,
No 4, 1969, pp 119-120.
JPRS GUO 3072

EE-Czech
Econ
Jul 69

386,302

Investment Efficiency for Services Evaluated,
by Libuse Brunova, 9 pp.
GOVERNMENT USE ONLY
CZECH, per, Investicni Vystavka, Prague, No 5,
1969, pp 137-140.
JPRS GUO 3090

EE-Czech
Econ

Production Program of Slovnaft Analyzed, by
Vl. Zvolansk, 8 pp.
GOVERNMENT USE ONLY
CZECH, per, Investicni Vystavba, Prague,
Jul-Aug 1969, pp 205-208.
JFRS/L 3145

EE-Czech
Econ
Oct 69

394,660

Housing's Current and Future Status Evaluated,
5 pp.

GOVERNMENT USE ONLY

CZECH, per, Investicni Vystavba, Prague,
Jul-Aug 1969, pp 209, 210.

JFRS/L 3145

EE-Czech

Investments Control of Building Projects Noted,
by Jiri Skoda, 7 pp.
GOVERNMENT USE ONLY
CZECH, per, Investicni vystavba, Prague, No 11,
1969, pp 323-324.
JPRS/L 3266

EE-Czech
Econ
Feb 70

399,570

Investment Plans of CKD Enterprise Discussed,
by M. Votavova, 10 pp.
GOVERNMENT USE ONLY
CZECH, per, Investicni vystavba, Prague, No 11,
1969, pp 327-332.
JPRS/L 3266

SI-Czech
Econ
Feb 70

399,571

Management Systems, New Factory Designs Dis-
cussed, by Rudolf Tuma, Ludek Vavron, 8 pp.
GOVERNMENT USE ONLY
CZECH, per. Investicni vystavba, Prague, No 11,
1969, pp 332-334.
JPRS/L 3266

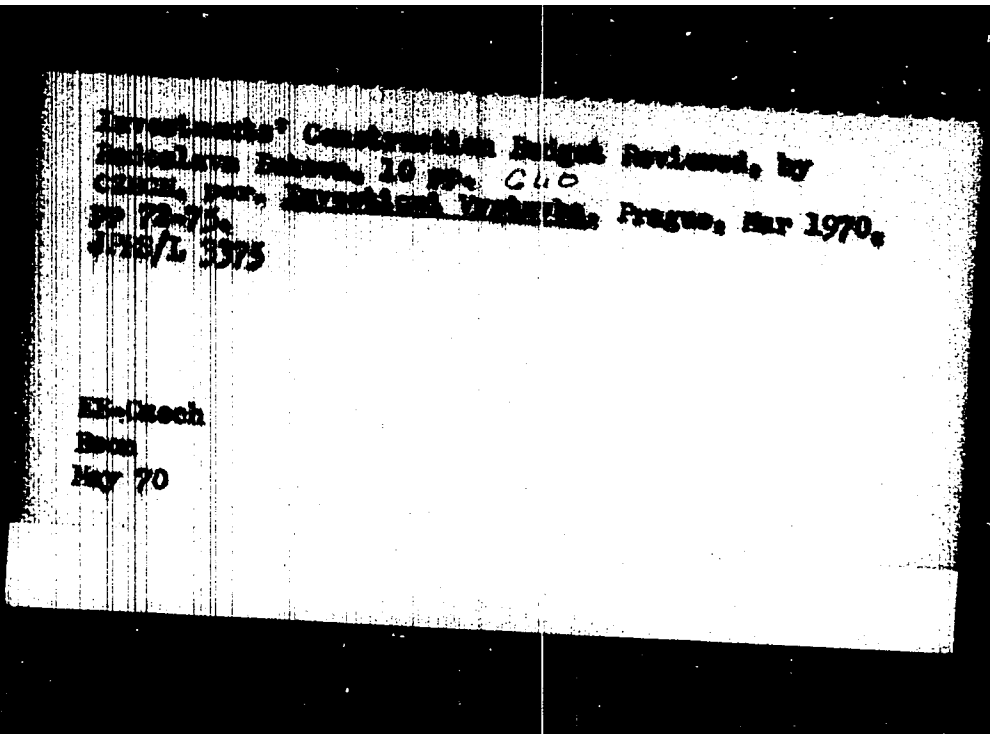
EEI-Czech
Econ
Feb 70

399,572

Future Investment Construction Plans Reviewed,
by Karel Hlavy. 15 pp.
GOVERNMENT USE ONLY
SLOVAK, rev. Department of Statistics, Prague,
No. 2, 1970, PP 35-59.
JPRS/L 1258

SI-Czech
Econ
May 70

407.342

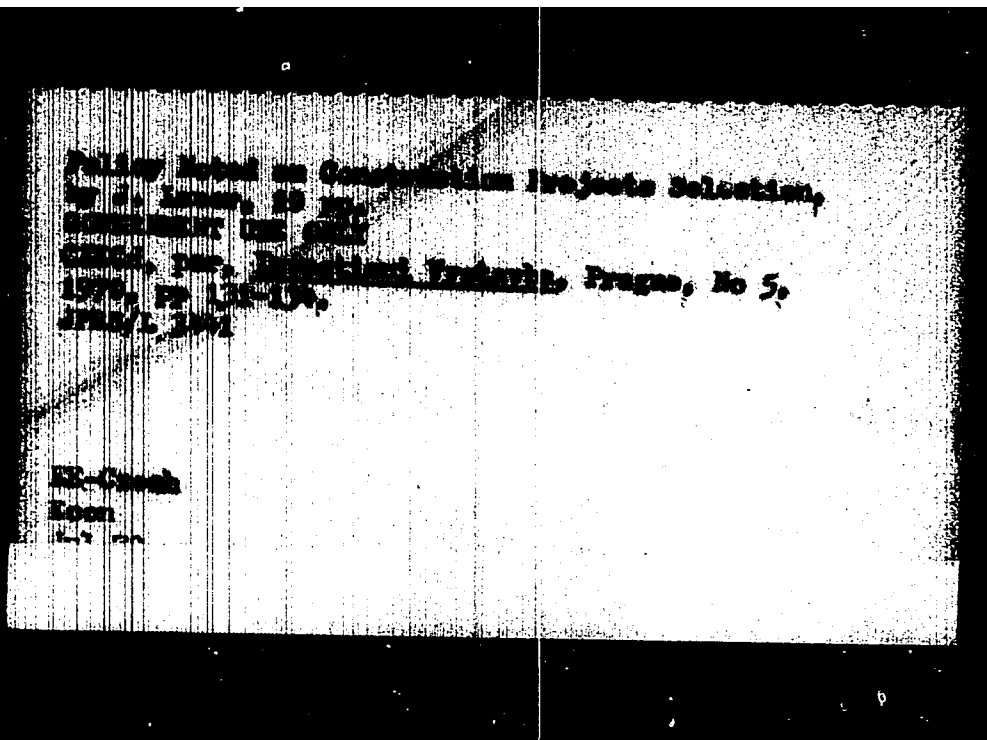


Research and Development in Regional Planning
Journal of Planning Studies, 18 pp.
GOVERNMENT USE ONLY
SLOVAK, Inst. International Vystavba, Prague, No 4,
1970, pp 99-102.
JTS/L 346

EE-Czech
Econ
June 70

Environmental Protective Measures Described,
by Malcolm Baker, 2 pp.
CIVILIAN USE ONLY
Czech. rep. Republika Vnitřní, Prague, No 4,
1970, pp 104-106.
JRS/L JOK

EE-Czech
Tel.
June 70



Original Document Given to Investment
Agency by Director Beloslavsk, 10 pp.
Government, 1970
Official pub. International Institute, Prague, No 9,
1970, pp 25-26.
JPRS/I 3605

EE-Czech
Econ
Dec 70

