

Mass Spectrometer With Diverging Electric Field,  
by H. Matsuda.  
JAPANESE, per, Shitsuryo Bunseld, Vol 16, No 3,  
1968, pp 30-36.  
NTC-71-10643-20F

Nov 71

*lit. C.* (K-Trans-63) IMPROVEMENT IN THE MEASUREMENT OF THE ISOTOPE RATIO OF URANIUM. Komori, Takuji; Tamura, Shuzo; Gunji, Katsubumi; Tamura, Kimiko. Translated for Oak Ridge Gaseous Diffusion Plant, Tenn., from *Shitsuryo Hunsoki*; 18: No. 4, 1270-4 (Dec 1970). 8p. Dep. NTIS.

chemistry (analytical); translations 07

MN-4 P NSA

Chicou Organization of Space Research and Development, by Akagi Akie.  
JAPANESE, par, Shizun, No 10, Oct 1967, pp 31-41.  
CIA-9-68

*FTD Special 48-68*

Sept 68

366,424

Information of Rivers and Dams, 17  
... .. 13 20.  
... ..  
... .. Vol. 25, No. 3, 1970, pp 31-39.  
... ..

March 71

Earthquakes and the Movement of "plates" on the  
Bottom of the Ocean, by T. Santo, 20 pp.

GOVERNMENT USE ONLY

JAPANESE, per, Shizen, Vol 25, No 4, 1970, pp 69-77.

ARM/FSTC/HT-23-013-71

May 71

Sekita, Hiroshi et al

1970

Isolation and determination of diphenyl chloride from  
animal tissues and its distribution in rats (Enkaifenil  
no dobutsu soshiki kara no chugutsu teiryoho narabi ni  
shironozumi ni okeru tainsi bunpu)  
Shokubin Siseigaku Zasshi (Journal of Food Hygiene),  
11(5): 361-366. In Japanese.

Transl. by Transl. Bur., Egn. Lang. Div., Dept. of Sec. of  
State of Canada, for ER C Marine Ecology Laboratory, Dartmouth,  
N.S., 1972, as Transl. Series No. 2062, 16p., typescript.

Avail. on loan - NMPS, Wash., D.C.

YRC - C - 11105

NTC - 72 - 60637 - 06A

Original Article Checked

*SHOKUBUTSUGAKU ZASSHI*

*ALSO SEE*

*BOTANICAL MAGAZINE, TOKYO*

Determination and Decomposition of Diethyl-  
pyrocarbonate. Part I. Determination With  
Isobutylamine and Decomposition in Various  
Solutions, by S. Hara.  
JAPANESE, per, Shokuhin Eiseigaku Zasshi, Vol 7,  
No 6, 1966, pp 497-502.  
NTC-71-12348-07C

Nov 71



**06H Food**

70-13321-06H

Iwaka, M.; Tsugo, T.

ON THE NITROSAMINES IN FOODS. Shokuhin Eiseigaku  
Zasshi, v. 10, n. 2, p. 59-67, 1969. NIH 3-1-70.

Order from NTC as 70-13321-06H: HC \$ 7.60, MF \$ 5.80.

Zenji, Y.

Relationship Between Air Pollution and Attacks of  
Infantile Bronchial Asthma---Using the SO<sub>2</sub> Concen-  
tration in the Air as an Index.

SEONIKA RINSHO, Vol 23, pp 983-990, 1970.

NTC-72-14779-06J

Jan 1973

S. Funabashi

Air Pollution and Infantile Bronchial Asthma. Report  
No. 1 on the Prevalence of Asthma in a Polluted Area  
SHONKA SHINRYO, Vol 34, No 11, 1971, pp 38-44  
NTC 72-14780-06J

Jan 1973

Relations Between North Korea, The Soviet  
Union and China.  
JAPANESE, par, Shoten No., No 165, Jun 1966,  
pp 4-10.  
ACSI J-5287  
ID 2204017068

Far East  
Pol  
Sept 68

366,682

The Incident of Paiping No. 1 Cotton Mill,  
5 pp.

CHINESE, por, Shou-tu Hung-wed-ping, No 12,  
20 Nov 1966, p. 2.

JPRS 40937

FE-China

Soc

May 67

325,359

General Headquarters of Red Guard Revolutionary  
Rebels Issues Statement on the So-Called  
"Heating of the Liberation Army by Third  
Command Headquarters," 4 pp.  
CHINESE, per. Shou-tu Hung-wei-ping, 20 Nov 1966,  
p. 4.  
JPRS 40587

FE-China  
MI1  
May 67

325,360

Determine to Defeat Licentious Counter-Attacks  
on the Cultural Revolution, 5 pp.

CHINESE, per, Shou-tu Hung-wei-ping, No. 16,  
11 Dec 1966.

JPRS 40349

FE-China  
Pol  
Apr 67

321,422

Whither the Middle Vocational Department of  
the San-Sou Middle School? 7 pp., GOVERNMENT  
USE ONLY,  
CHINESE, np. Shou-tu Hung-wei-ning, No 6,  
7 Feb 1967, p 2.  
JPRS GIO 2408

FE-China  
Sec  
Jun 67

328,518



An Earth-Shaking Event—Let Us Cheer for the  
Inauguration of the Peking Revolutionary  
Committee, 5 pp.

CHINESE, np. Shou-tu Hung Wei-ping, Nos. 12  
and 13, 20 Apr 1967.

JPRS 41622

FE-China

Pol.

Jul. 67

28,777

Advances, Chairman Mao's Red Guards!, 15 pp.  
CHINESE, np. Shou-tu Hung Wei-ping, Nos. 12  
and 13, 20 Apr 1967.  
JPRS 41622

FE-China  
Pol  
Jul 67

328,778

Great Strategic Thought of Chairman Mao, 5 pp.  
CHINESE, per Shou-tu Hung-wei Ping, Nos 34-35,  
7 Jun 1967, p 1.  
JPRS 42887

Comm China  
Pol  
Oct 67

343,479

Red Guards Should Be Models of Self-Criticism,  
5 pp.  
CHINESE, per. Shou-tu Hing Wei-ping, Nos.  
36-37. 9 Jun 1967, p. 1.  
JPRS 42070

File-China  
Pol  
Aug 67

377.772

How to Expand the Great Proletarian Cultural  
Revolution in Peking Middle Schools, 14 pp.  
CHINESE, np, Shou-tu Hung-wei Ping Chan-pao,  
10 Feb 1967.  
JPRS 41446

FE-China  
Soc  
Aug 67

333,094

A Review of Recent Studies on Free Histidine  
and its Derivatives in the Brain, by S. Tsunoo.  
JAPANESE, per, Shonin Igakkai Z., Vol 27, No 7,  
1967, pp 523-535.

HEW-NIH

1-1-68

Sci/B & M  
Feb 68

349,794

Fisheries and Aquiculture Production Statistics  
For 1964.

JAPANESE, mono, Showa 39 Gyogyo Yoshokugyo  
Seisan Tokai Nempo, pp.1-31, 1966.

\*OTS Vol.16, No.2.

Sept 66

Report by Tientsin Electrical Industries  
Bureau on Increased Power Rate, 8 pp.  
GOVERNMENT USE ONLY  
CHINESE, per, Shai-li Yu Tien-li, 20 Jul  
1965, pp. 27-31.  
JPRS CMO 1080

FE-China  
Sci-Electronics  
Mar 66

296,897



Economize Coal for Electric Power Generation,  
by Wu Chung-hsiang, 6 pp.  
GOVERNMENT USE ONLY  
CHINESE, per, Shui-li yu Tien-li, No 23,  
5 Dec 1965, pp. 18-20,  
JPRS GUO 2026

FE-China  
Econ  
Jun 66

303,133

Table of Contents and Foreword of Chinese  
Monograph "Diagrams of Ferro-concrete  
Beams," 5 pp.  
GOVERNMENT USE ONLY  
CHINESE, mono, Shui-ni ch'uan T'u-t's'e,  
Peking, Apr 70, p 138.  
JPRS/L 3983

Jan 72

Improve Charting in Order to Set Ships on  
the Right Course, 5 pp.  
CHINESE, par, Shui-yun, No 3, 7 Aug 1965,  
pp. 12-13.  
JPRS 33156

YE-China  
Econ  
Dec 65

292,475

Knowledge Stems from Practice, by Kao Chih-  
ming (7559 1807 2494), 12 pp.  
CHINESE, per, Shui-yun, No 8, 7 Aug 1965,  
pp. 17-21.  
JPRS 33156

FE-China  
Econ  
Dec 65

292,476

Use "On Contradiction" and "On Practice" To  
Solve Contradiction between Transport  
Capability and Amount, 5 pp.  
CHINESE, per, Shui-yun, No 9, 7 Sept 1965,  
pp. 8-9.  
JPRS 33560

FE-China  
Econ  
Jan 66

293,996

Are Coal Gas Ships Worth Retaining?, by  
Ch'ou Hsing-chiu (7115 7703 0036), 5 pp.  
~~CHINESE~~, per, Hui Yun, No 10, 7 Oct 1965,  
pp. 31-33.  
JPRS 34250

FE-China  
Econ  
Mar 66

296,584

Further Progress to Strive for Greater Ful-  
fillment of the Sea Transportation Production  
Task, by Li Wei-chung, 13 pp.  
CHINESE, per, Shui-yun, No 1, 7 Jan 1966,  
pp. 3-8.  
JPRS 35766

PE-China  
Econ  
Jun 66

302,931

How the Hsiao-Ch'ing-Ho Shipping Bureau  
Developed Cargo Service to Support Agricul-  
ture, 7 pp.

CHINESE, per, Shui-yun, No 1, 7 Jan 1966,  
pp. 18-20.  
JPRS 35766

FB-China  
Econ  
Jun 66

302,932



Sail Transport Co-ops To Exploit Latent  
Capacities and Fulfill Tasks for 1966,  
by Chang Wei-mo, 7 pp.  
CHINESE, per, Shui-yun, No 2, 7 Feb 1966,  
pp. 21-23.  
JPRS 35874

FE-China  
Econ  
Jun 66

303,077

How To Handle Cargo in Shipment, 6 pp.  
CHINESE, per, Shui-yun, No 2, 7 Feb 1966,  
pp. 31-33.  
JPRS 35874

FE-China  
Econ  
Jun 66

303,078

Providing Spiritual Food for Revolution to  
Seaman, 7 pp.  
CHINESE, per, Shui-yun, No 2, 7 Feb 1966,  
pp. 33-35.  
JPBS 35874

FE-China  
Soc  
Jun 66

303,079

Austerity Drive Yields Initial Results, 7 pp.  
CHINESE, per, Shui-yun, No 3, 7 Mar 1966,  
pp. 5-7.  
JPRS 35949

FE-China  
Econ  
Jun 66

303,173

Ready for Revolutionary Progress, 8 pp.  
CHINESE, per, Shui-yun, No 3, 7 Mar 1966,  
pp. 14-17.  
JPRS 35949

FE-China  
Econ  
Jun 66

303,174

Use of Dredged Subsoil As Materials to Build  
River Bed Infrastructures, 5 pp,  
CHINESE, per, Shui-yun, No 3, 7 Mar 1966,  
pp, 31-33,  
JPRS 35949

FE-China  
Econ  
Jun 66

303,175

Enhance Revolutionary Tradition and Promote  
Diligence and Frugality, 8 pp.  
CHINESE, par, Shui-yun, No 1, 1 Apr 1966,  
pp. 30-34.  
JPRS 36473

FE-China  
Econ  
Aug 66

307,983

Upholding Mao's Thinking to Perfect Overseas  
Transportation, 8 pp.  
CHINESE, per, Shui-yun, No 4, 7 Apr 1966,  
PP: 22-25,  
JPRS 36473

FE-China  
Econ  
Aug 66

307,981



Ta-Lien Harbor Makes Rapid Progress, 10 pp.  
CHINESE, per, ~~SHUI-YUAN~~, No 4, 7 Apr 1966,  
pp. 25-30,  
JPRS 36473

FE-China  
Econ  
Aug 66

307,982

Sightseeing Tour of China as Described  
by Correspondent Tanaka, 9 pp.  
FOR OFFICIAL USE ONLY  
JAPANESE, per, Shukan Asahi, 9 Apr  
1965.  
DIA 22221160-65

*China*  
PH-~~1000~~-500  
JRI 65

263,591

Review of Japan's Aircraft Needs Through 1980  
Reflects Emphasis on Domestic Production, 8 pp.  
GOVERNMENT USE ONLY  
JAPANESE, par, Shukan Boei Tokushin, Tokyo,  
1 Jul 1969, pp 1-10.  
JFRS/L 3381

Sci-Mech, Ind, Civ & Mar Engr  
Jun 70

1970 Defense Budget Up 22 Percent Over 1969, 18 pp.  
GOVERNMENT USE ONLY  
JAPANESE, per, Shukan Boei Tokushin, Tokyo,  
26 Aug-2 Sept 1969, pp 1-15.  
JFRS/L 3381

FE-Japan  
Eoon  
Jun 70

Y-X Development Faces Budget Snags, 9 pp.  
GOVERNMENT USE ONLY  
JAPANESE, per, Shukan Boei Tokushin, Tokyo,  
9 Sept 1969, pp 1-9.  
JPRS/L 3381

FE-Japan  
Econ  
Jun 70

Record Defense Budget Moves Japan Closer to  
Independence from U.S. Military Protection,  
7 pp.

GOVERNMENT USE ONLY

JAPANESE, per, Shukan Boei Tokushin, Tokyo,  
28 Oct 1969, pp 1-9.

JPRS/L 3381

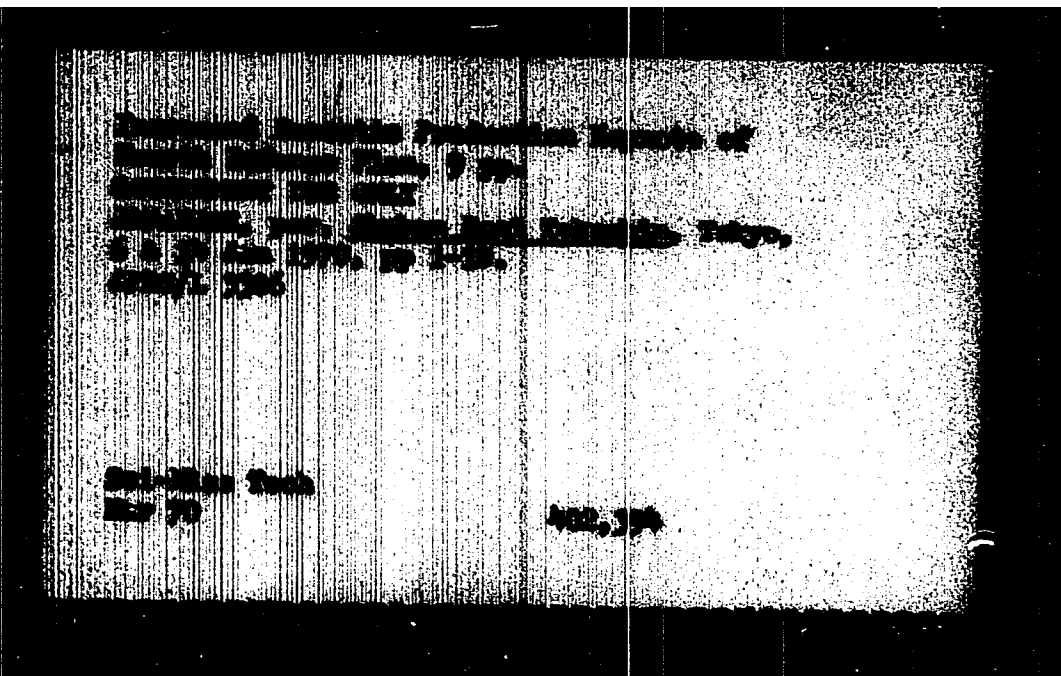
FE-Japan

M11

Jun 70

Submarine, Minelayer Forces to be Increased,  
8 pp.  
GOVERNMENT USE ONLY  
JAPANESE, per, Shukan Boei Tokushin, Tokyo,  
16 Dec 1969, pp 1-10.  
JPRS/L 3306

Sci-Mech, Ind, Civ & Mar Engr  
Mar 70 402,399

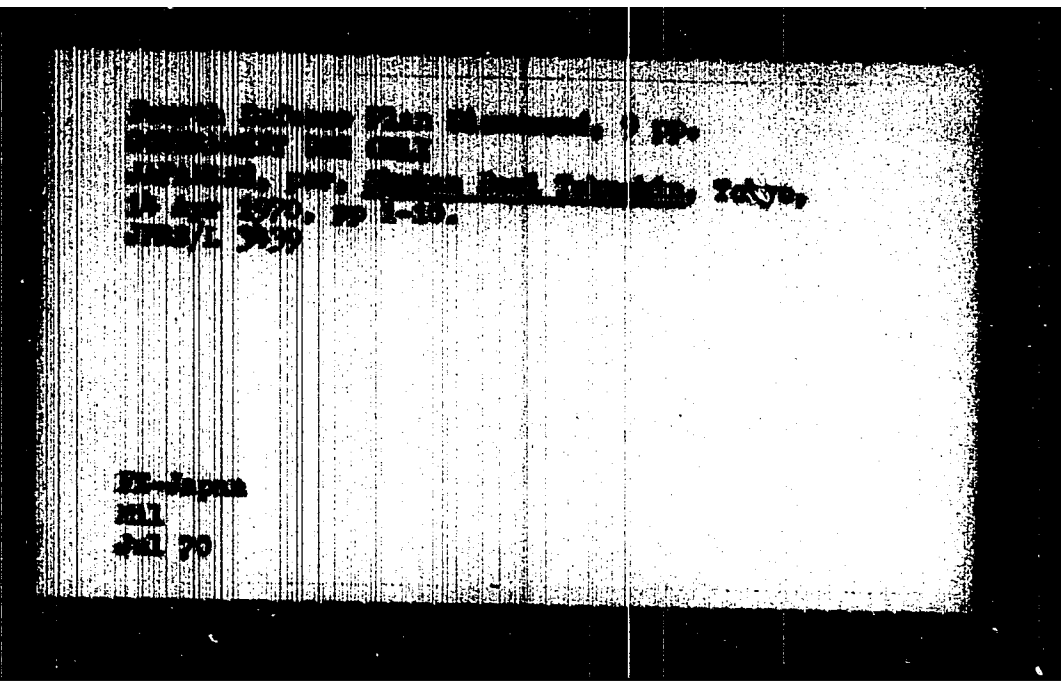


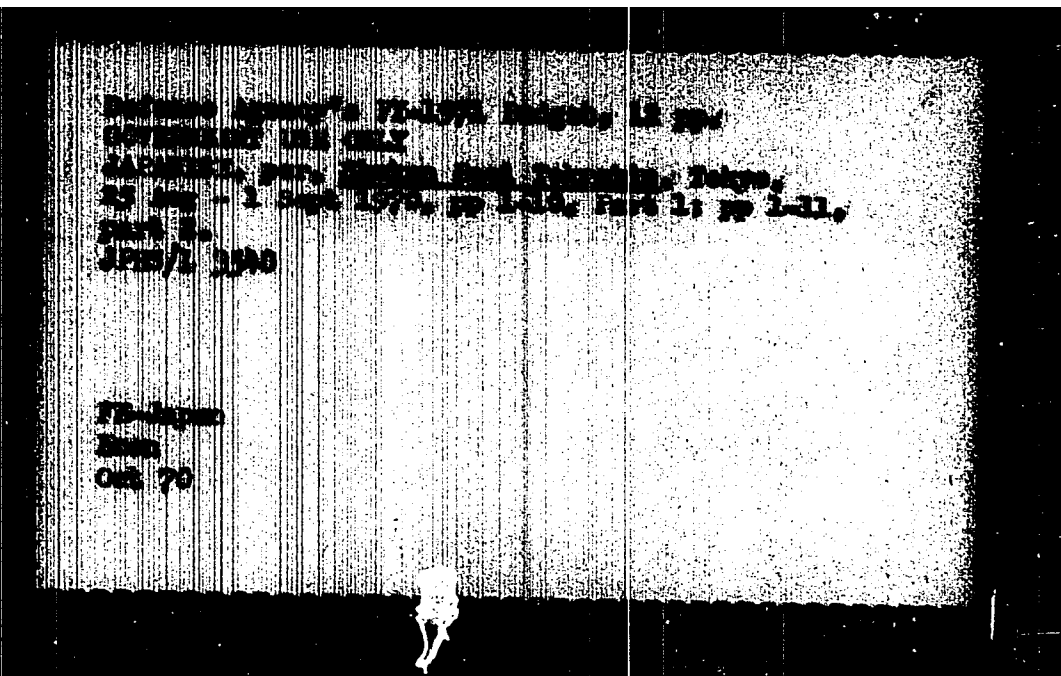


Outline for 1970 Defense Projects Given, 14 pp.  
CONFIDENTIAL USE ONLY

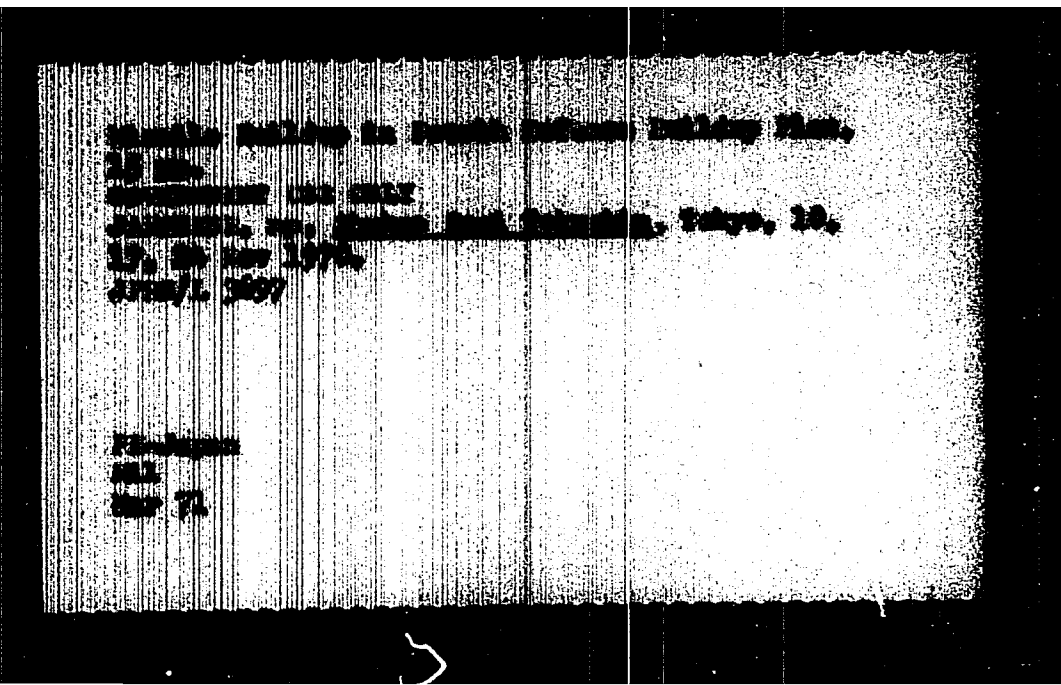
JAPANESE, by, Shunzo Kato, Tokushima, Tokyo,  
24 Feb 1970, pp 5-10; 3 Mar 1970, pp 1-10.  
JPRS/L 3366

FE-Japan  
R11  
May 70









Avionics for F-4EJS, 6 pp.  
GOVERNMENT USE ONLY  
JAPANESE, np. Shukan Boei Tokushin, Tokyo,  
26 Jan 71.  
JPRS/L 3756

May 71

Little Progress Being Made Against Drug Abuse,  
Cebu, 10 Aug 1972, by [unclear], 6 pp.  
COMBATED BY CUI  
JASPER, pp. Shinonichi, Tokyo, 3 June 1972,  
p. 1-6.  
JPRS/L 4236

AUG 72

UN Should Investigate Use of Lethal Gas  
by Egypt in Yemen.  
TIAO, np, Siam Rat, 25 July 1967  
JPRS CSO: 16610

dt= Oct 67



Developments, Problems in North Celebes  
Described, by Max Karundeng, 23 pp.  
INDONESIAN, pp. Sinar Harapan, 13, 14, 19,  
20, 21, 22, 23, & 24 Aug 1968, pp 1, 2.  
JPRS 46,694

FE/Indonesia  
Pol  
Nov 68

370,016

The Fundamental Conflicts Between Chicom Regime and  
Laborers, by Lu Yang.

CHINESE, np, Sing Tao Jih Pao, 21 Oct 1968.

CSO:18534

Comp

Special

Nov 68

A New Theory on Soviet Union's Invasion of  
Czechoslovakia.

CHINESE, np, Sing Tao Jih Pao , 22 Nov 1968.

JPRS CSO:18707

Comp

Special

Jan 69

Mao Tse-Tung Tears Up Chinese Communist  
Party Rules, by Sun Chia-Hsien.  
CHINESE, np, Sing Tao Jih Pao, 26 Nov 1968.  
JPRS CSO:18707  
Comp  
Special

Jan 69

CCP's Rules of Organization Were Torn to  
Pieces by Mao, by Sun Chia-hsine.  
CHINESE, np, Sing Tao Jih Pao, 26 Nov 1968.  
JPRS CSO:18736  
Comp  
Special

Jan 69

Communist Chinese Top-Level Scientists  
Persecuted.

CHINESE, np, Sing Tao Jih Pao, 2 Dec 1968.

CSO:18763

Comp

Special

Jan 69

Comp

NEW

19415  
8 May 69

New Channels for Vietnam Political Solution  
Sought, by Lu Yang.

CHINESE, np, Sing Tao Jih Pao, 11 Apr 69.

Red China's Air Force Combat Capability  
Analyzed, by Hsiao Lien, 8 pp.  
CHINESE, np, Sing-tao Jih-pao, Hong Kong,  
14 May 1969, p 2; 18 May 1969, p 2.  
JPRS 48654

Comm China  
Pol  
Aug 69

389,182



Anti-Mao Elements Engage in Sabotage Activities,  
5 pp.  
CHINESE, np, Sing-tao Jih-pao, Hong Kong,  
20 Sept 1969, p 4.  
JPRS 49112

FE-Com China  
Pol

Soviet Cultural Attack and Defense with Forces  
Cannot Stifle Czech Liberatization Campaign, by  
Ch'a Ling, Part 1.  
CHINESE, np, Sing Tao Wan Pao, 15 July 1968.  
JPRS CSO:18072  
Special

Aug 68

Soviet Cultural Attack and Defense with Forces  
Cannot Stifle Czech Liberalization Campaign,  
Part 2, by Ch'a Ling.  
CHINESE, np, Sing Tao Wan Pao, 17 July 1968.  
JPRS CSO:18072  
Specail

Aug 68

North Vietnamese Soldiers Worried About Long March,  
by Chien Ping.

CHINESE, np, Sing Tao Wan Pao, 18 July 1968.

JPRS CSO:18072

Special

Aug 68

Paris Peace Talks Are Starting to Reveal Hidden  
Tension Between Hanoi, Vietcong.  
CHINESE, np, Sing Tao Wan Pao, 23 July 1968,  
JPRS CSO:18072  
Special

Aug 68

Chinese Communist Build Second Railway in Africa,  
by Ch'a Ling.

CHINESE, np, Sing Tao Wan Pao, 24 Aug 1968.

CSO:18294

Comp

Special

Oct 68

Phouma Charges Hanoi with Mounting Aggression, by  
Tu Ling.

CHINESE, np, Sing Tao Wan Pao, 24 Aug 1968.

CSO:18294

Comp

Special

Oct 68

Who Has Distorted the Facts, by Lai Yang.  
CHINESE, np, Sing Tao Wan Pao, 28 Aug 1968.

CSO:18294

Comp

Special

Oct 68



CSO:18518

Comp  
Special

Communist China May Invade Soviet Union, by Lai Yang.  
CHINESE, np, Sing Tao Wan Pao, 9 Oct 1968.

Nov 68

Outlawed Private Enterprises Springing Up  
Throughout China.  
CHINESE, np, Sing Tao Wan Pao, 22 Oct 1968.

CSO:18534

Comp

Special

Nov 68

Russia Sets Up Missile Sites on China Border, by  
Teh-sun.

CHINESE, np, Sing Tso Wan Pao, 31 Oct 1968.

CSO:18613

Comp

Special

Nov 68

New Chinese Bodies Face Attack, by Sheng  
p'ing.  
CHINESE, np, Sing Tao Wan Pao, 12 Nov 1968.  
JPRS CSO:18670  
Comp  
Special

Dec 68

To Hold a World Conference of Marxist-Lenin-  
ist Parties, Chicom's Abitions Illusions  
Broken , by Ch'e-ling.  
CHINESE, np, Sing Tao Wan Pao, 20 Nov 1968.  
JPRS CSO:18695  
Comp  
Special

Dec 68

Hanoi is Shifting to Policy on Negotiation,  
by Te Hsun.  
CHINESE, np, Sing Tao Wan Pao, 4 Dec 1968.  
CSO:18763  
Comp  
Special

Jan 69

Comp  
[

19415  
8 May 69

Saigon Secret Talks Proposal Rejected, by  
Sheng P'ing.  
CHINESE, np, Sing Tao Wan Pao, 19 Apr 69, p 3.

World Consequences of Rissian Imperialism in  
Czechoslovakia, by Teh sun  
CHINESE, np, Sing Tao Wen Pao, 21 Oct 1968.  
CSO:18534  
Comp  
Special

Nov 68



Chicom and Soviets are Both Wolves, Small  
Asian Countries Should be Vigilant, by  
Ch'e-Ling.

CHINESE, np, Sing Tao Wen Pao, 1 Nov 1968.

JPRS CSO:18651

Comp  
Special

Dec 68

Russia Alienated in Communist World, by  
Sheng-p'ing.  
CHINESE, np, Sing Tao Wen Pao, 5 Nov 1968.  
JPRS CSO:18651  
Comp  
Special

Dec 68

Worry For Red Empire on Another Front Part  
I, by Chein-ping.  
CHINESE, np, Sing Tao Wen Pao, 5 Nov 1968.  
JPRS CSO:18651  
Comp  
Special

Dec 68

Worry for Red Empire on Another Front -  
Concluded, by Chein-ping.  
CHINESE, np, Sing Tao Wen Pao, 6 Nov 1968.  
JPRS CSO:18651  
Comp  
Special

Dec 68

China Leaders of the Two Factors Appear  
Split on Party Rebuild, by Te-sun.  
CHINESE, np, Sing Tao Wen Pao, 11 Nov 1968.  
JPRS CSO:18670  
Comp  
Special

Dec 68

Chinese Communists Confiscate Overseas  
Remittances, by Wang Chin-yuan.  
CHINESE, np, Sing Tsu Jih Pao, 23-24 Nov 1968.  
JPRS CSO:18707  
Comp  
Special

Jan 69

Class Differences Greater on Maimland Today;  
Higher Cadres Enjoy Luzury, Ignoring Bitter  
Plight of People.

CHINESE, np, Sing Tau Jih Pao, 3 Dec 1968.

CSO:18763

Comp

Special

Jan 69

Mainland's Deposed Intellectuals Organize  
Secret Societies and Prepare for Long-Term  
Struggle.

CHINESE, np, Sing Tsu Jih Fao, 7 Dec 1968.

JPRS CSO:18782

Comp

Special

Jan 69



Mao-Lin Elements are Only Good People on  
Mainland; Having Wrong Name Makes on a  
Criminal, Qwning a Radio is a Felony, Having  
a Sewing Machine Makes one a Capitalist  
Roder, Chatting with Friends is forming a  
Clique.

CHINESE, np, Sing Tsu Jih Pao, 7 Dec 1968.

JPRS CSO:18782

Comp

Special

Jan 69

Maoist "Education Reform" Schools all Under  
Control of Peasants and Workers, Already Turned  
Into Slave Labor Camps.

CHINESE, np, Sing tsu Jih Pao, 7 Dec 1968.

JPRS CSO:18782

Comp

Special

Jan 69

Mainland People Can Well Make Skillful  
Use of Constitutional Weapon, by Sun Chie-  
Hsien.  
CHINESE, np, Sing Tsu Jih Pao, 24 Dec 1968.  
CSO:18848  
Comp  
Special

Jan 69

Ch'en Falls During Cultural Revolution,  
by Tsi Hsiao-si.  
CHINESE, np, Sing Tsu Jih Pao, 24 Dec 1968.  
CSO:18848  
Comp  
Special

Jan 69

Plans for Equipping Ground Self Defense  
Force, 7 pp.  
GOVERNMENT USE ONLY  
JAPANESE, np, Skukan Boei Tokushin, Tokyo,  
8 Dec 69, pp 2-10.  
JPRS/L 3733

FE/Japan  
Mil  
Apr 71

Recovery of Mercury, by T. Yokota.  
JAPANESE, per, Soda to Enso, Vol 19,  
No 3, 1968, pp 87-95.  
NTC 72-10830-07A

Apr 72

Removal of Mercury From Waste Water,  
by K. Irikayama.  
JAPANESE, per, Soda to Inso, Vol 21,  
No 6, 1970, pp 216-229.  
NTC 72-10828-07A

Apr 72

Adsorption of Mercury in Water With  
Amphoterio Ion Exchange Resins, by  
Y. Kobayashi.  
JAPANESE, per, Soda to Enso, Vol 21,  
No 8, 1970, pp 285-292.  
NTC 72-10829-07A

Apr 72



The Relationship Between Maximum Wind Speed and  
Diameter of Circular Isobars and the Diameter  
of the Cloud in a Typhoon as Revealed by  
Apt Picture, by S. Tsuchiya and S. Ikuma,  
JAPANESE, par. Sakke Jihō, Vol 35, 1968, pp 113-116,  
NLL Ref: 58211.4F (7612)

Sci/Atmos  
Mar 70

404,132

Reference Ellipsoid of Astro-Geodetic Survey in  
Central China, by Omori, M.  
JAPANESE, par. Journal of the Geodetic Society  
of Japan, Vol 11, No 1, 1965, pp 1-7.  
AGIC To-1173

Sci-Earth Sci  
Dec 67

346,650

On Continuous Observation of Gravity, by  
Ichiro Nakagawa, 7 pp.  
JAPANESE, per, Sokuchi Galkai Shi, 1969, pp 2-5.  
ACSI J-8515  
ID 2204011870

Sci/Ear Sci  
Dec 70

Simultaneous Gravimetric Field Survey Made Between  
Mizusawa and Hachinohe, by Ichiro Nakagawa, 7 pp  
JAPANESE, per, Sokuchi Gakkai Shi (Journal of the  
Geodetic Soc of Japan), Vol 15, No 1, 1969, pp 6-9.  
ACIC-TC-1743

GUO

Oct 71