

Reagan, Ronald



Groundbreaking
for the
Central Intelligence Agency
Headquarters Building Expansion
by
The President of the United States

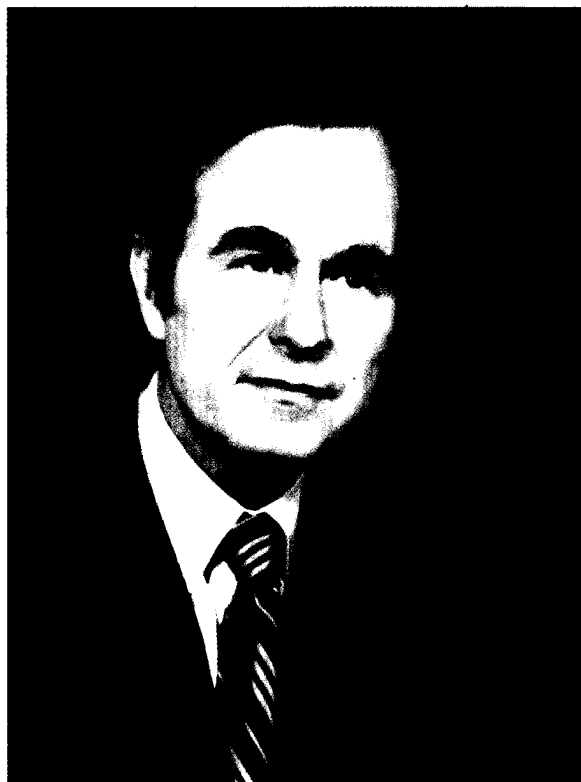
24 May 1984

The President of the United States



Ronald Reagan

The Vice President of the United States



George Bush

The Director of Central Intelligence



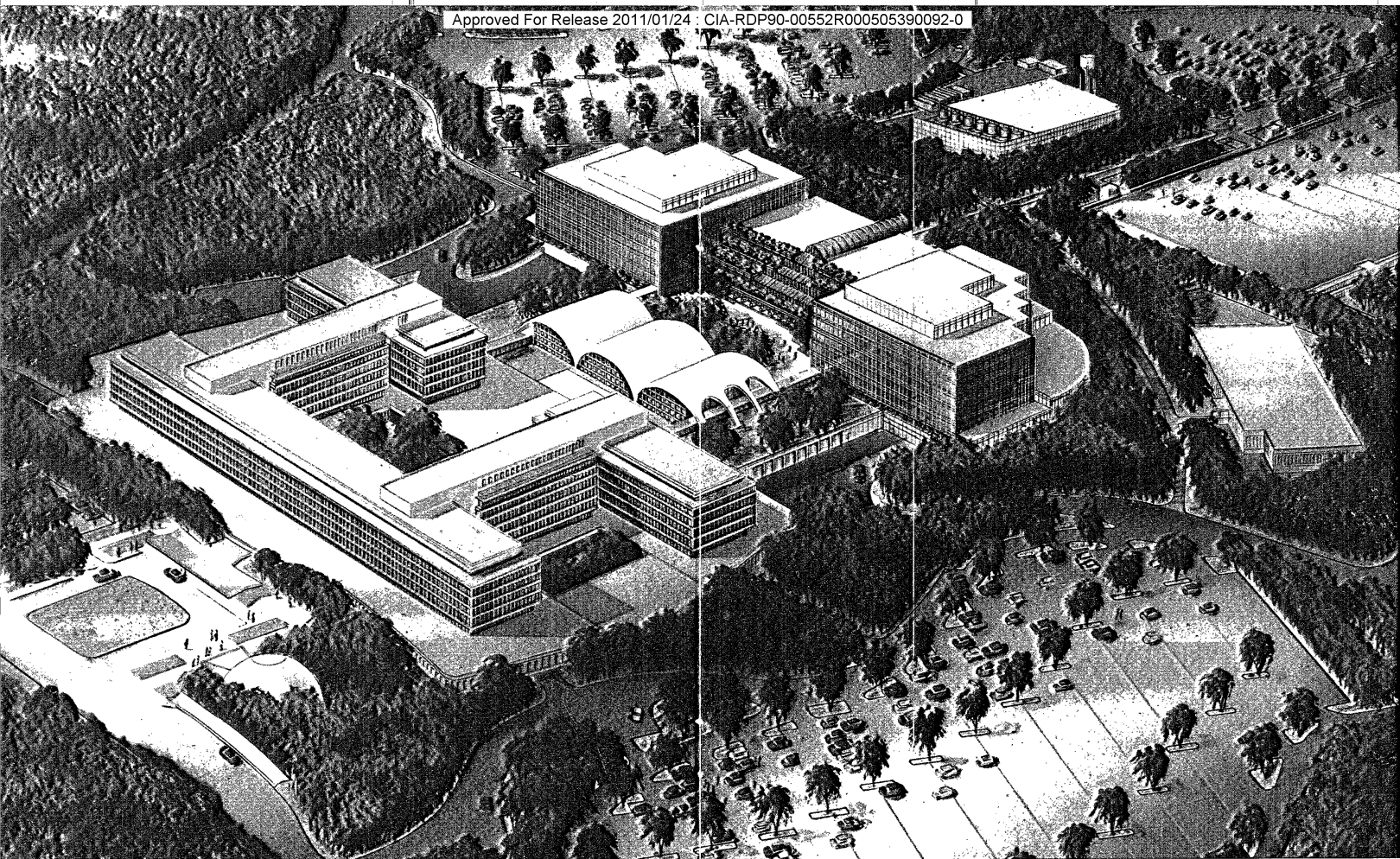
William J. Casey

The Deputy Director of Central Intelligence



John N. McMahon

Approved For Release 2011/01/24 : CIA-RDP90-00552R000505390092-0



The Headquarters Building Expansion

Approved For Release 2011/01/24 : CIA-RDP90-00552R000505390092-0

The Headquarters Building Expansion

Expansion of the Headquarters Building of the Central Intelligence Agency will provide space to consolidate approximately 3,000 employees from the Washington metropolitan area. The new facilities include a 1.1 million square foot multipurpose building, a 2,500 car parking deck, and a security checkpoint.

The multipurpose facility, consisting of both office and machine space, is being constructed west of the existing cafeteria and will connect to the existing building at the ground and first floor. The ground floor connections are adjacent to the new loading docks and will facilitate the movement of equipment and supplies between the two buildings. The first floor connections will provide personnel access to the cafeteria and between buildings.

The new building has been designed to preserve the wooded environment of the site and to maintain the presence of the existing building as the Headquarters entrance. The new building will be built into the hillside west of the existing cafeteria and will consist of two 6-story office towers constructed of green tinted glass curtain walls with horizontal and vertical divisions designed to be compatible with the existing Headquarters facade. The 4-story atrium will contain an employee services concourse and four levels of outdoor planters which will recreate some of the lost greenery of the hill. The ground floor base, which will be constructed of concrete to emulate the existing building, will contain building support functions. Entrance to the building will be at the fourth floor level on the west side and adjacent to the new parking deck. Two escalators will expedite the movement of personnel between the fourth and first floors.

The courtyard space between the two buildings is designed to preserve the existing large trees near the cafeteria, and additional plantings, park benches, tables, and pathways will be installed to encourage use of this space by Agency employees. This courtyard will also provide a pleasant view from the existing cafeteria and the atrium of the new building.

The new building incorporates the latest materials and construction techniques to permit rapid space reconfiguration at minimum cost. The entire office and computer space will be on raised flooring, and a system of plug-in wiring will be used for electrical distribution. The air-conditioning will be a variable volume system which is inherently flexible and can easily accommodate reconfigurations of interior space. Energy conservation has been stressed throughout, with the most noticeable evidence the unique double wall exterior. This double wall provides an insulating barrier on all sides.

The 3-level parking deck has also been designed to complement the campus atmosphere of the site and to provide a low profile for our neighbors at The Claude Moore Colonial Farm at Turkey Run and the Turner-Fairbank Highway Research Station. The parking deck will be built into a small hillside in the existing West Parking Lot and will have surface access at each level, eliminating the need for interior ramps between levels. The top level of the deck and the adjacent surface parking will be landscaped to soften the large area.

The new security checkpoint will be constructed east of the main entrance drive. This facility will permit improved security procedures that will validate visitors' credentials before they are admitted to the site. The security checkpoint will also be the Agency terminal for Metro buses and taxis. Shuttle service will be provided from this facility to the Headquarters entrance.

The design was accomplished by the architectural-engineering firm of Smith, Hinchman & Grylls Associates, Inc. The National Capital Region of General Services Administration is the contract agent for the construction. Initial construction is being accomplished by the George Hyman Construction Company.

Approved For Release 2011/01/24 : CIA-RDP90-00552R000505390092-0



Where It All Began

Approved For Release 2011/01/24 : CIA-RDP90-00552R000505390092-0

Central Intelligence Agency

CREDO

We are the Central Intelligence Agency.

We produce timely and high quality intelligence for the President and Government of the United States.

We provide objective and unbiased evaluations and are always open to new perceptions and ready to challenge conventional wisdom.

We perform special intelligence tasks at the request of the President.

We conduct our activities and ourselves according to the highest standards of integrity, morality and honor and according to the spirit and letter of our law and Constitution.

We measure our success by our contribution to the protection and enhancement of American values, security and national interest.

We believe our people are the Agency's most important resource. *We seek* the best and work to *make them* better. We subordinate our desire for public recognition to the need for confidentiality. We strive for continuing professional improvement. We give unfailing loyalty to each other and to our common purpose.

We seek through our leaders to stimulate initiative, a commitment to excellence and a propensity for action; to protect and reward Agency personnel for their special responsibilities, contributions, and sacrifices; to promote a sense of mutual trust and shared responsibility.

We get our inspiration and commitment to excellence from the inscription in our foyer: "And Ye shall know the truth and the truth shall make you free."

Program

Concert	The United States Army Band
Arrival of the President of the United States and the Vice President of the United States	
The National Anthem	The United States Army Band
Invocation	Chaplain (Colonel) Clifford T. Weathers
Welcome and Introduction	The Director of Central Intelligence
Remarks	The President of the United States
Breaking of Ground	The President of the United States The Vice President of the United States The Director of Central Intelligence The Honorable John H. Chafee The Honorable John W. Warner The Honorable Edward P. Boland The Honorable Frank R. Wolf The Deputy Director of Central Intelligence

Approved For Release 2011/01/24 : CIA-RDP90-00552R000505390092-0

*“And ye shall know the truth
and the truth shall make you free”
. . .John VIII-XXXII*

Approved For Release 2011/01/24 : CIA-RDP90-00552R000505390092-0