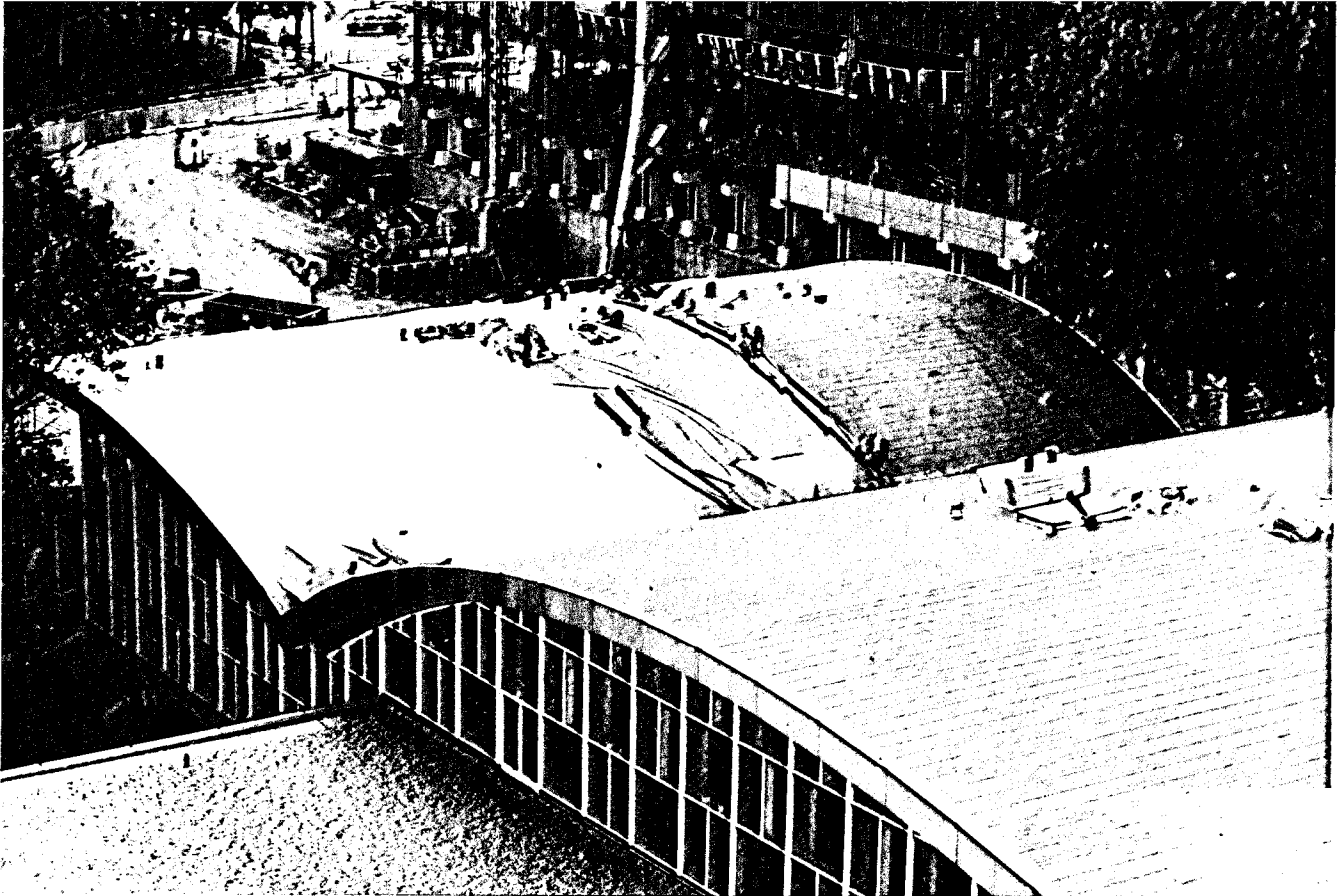
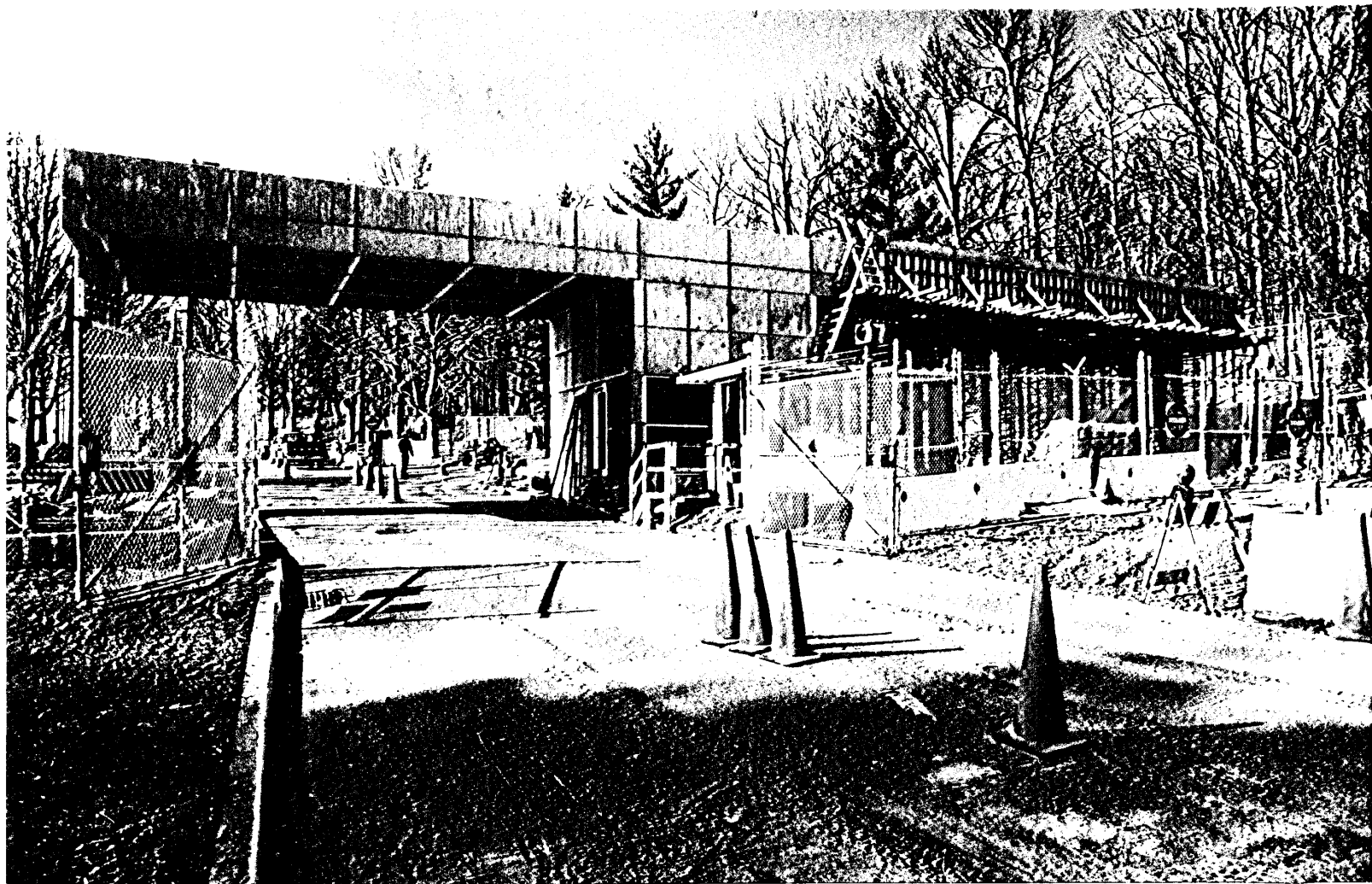


Declassified in Part - Sanitized Copy Approved for Release 2012/08/27 : CIA-RDP90-00379R000100300003-9



Declassified in Part - Sanitized Copy Approved for Release 2012/08/27 : CIA-RDP90-00379R000100300003-9

Declassified in Part - Sanitized Copy Approved for Release 2012/08/27 : CIA-RDP90-00379R000100300003-9



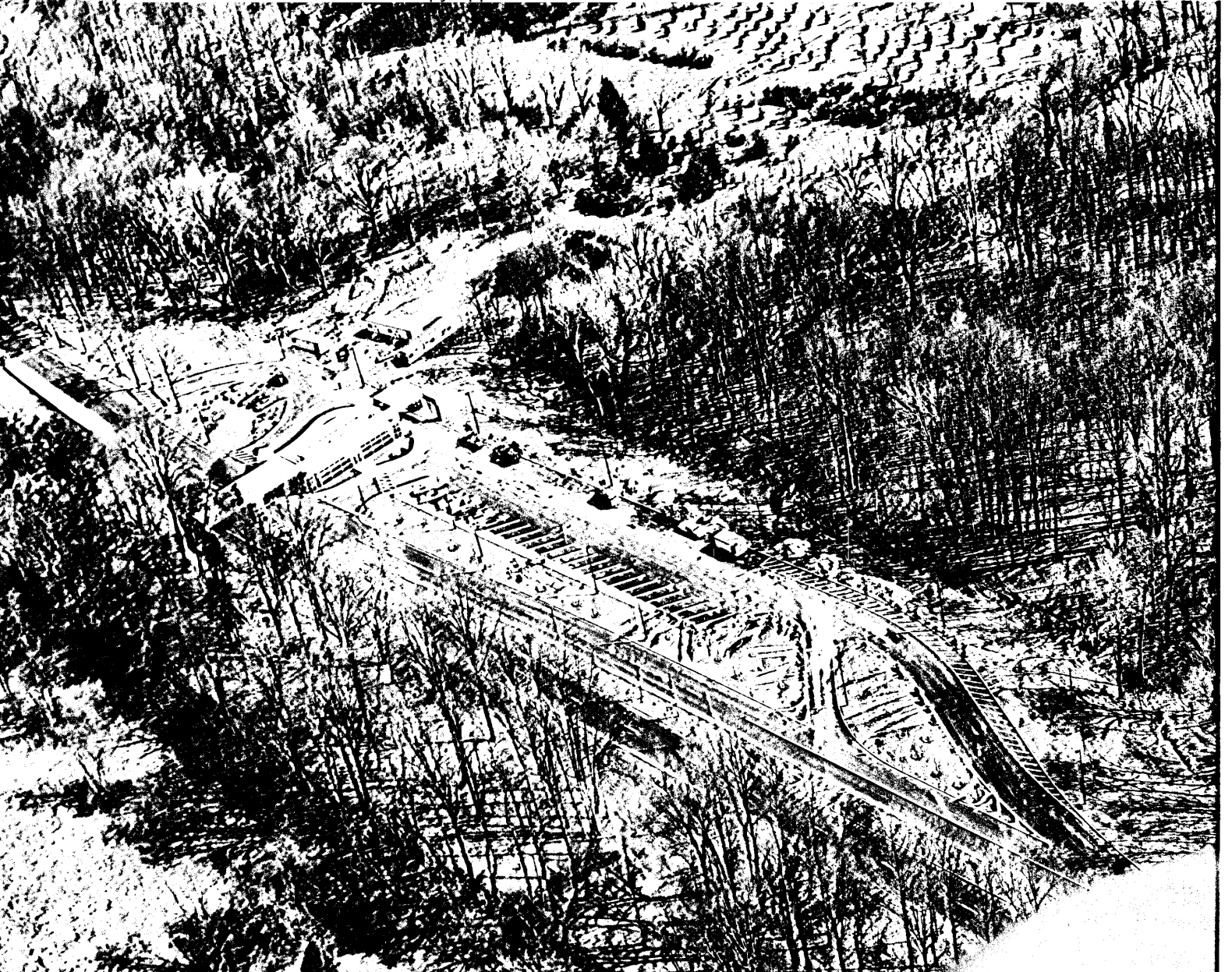
4 MAR 1987

Declassified in Part - Sanitized Copy Approved for Release 2012/08/27 : CIA-RDP90-00379R000100300003-9

4 MARCH 1987

GEORGE WASHINGTON MEMORIAL PARKWAY (GWMP)
VISITORS CONTROL CENTER (VCC) UNDER CONSTRUCTION.
EXTENSIVE ROADWAY MODIFICATIONS AT THE GWMP
ENTRANCE WILL BEGIN SOON.

Declassified in Part - Sanitized Copy Approved for Release 2012/08/27 : CIA-RDP90-00379R000100300003-9



Declassified in Part - Sanitized Copy Approved for Release 2012/08/27 : CIA-RDP90-00379R000100300003-9

3 MAR 87 (AERIAL)

EARLY CONSTRUCTION OF RT. 123/193 ROAD IMPROVEMENTS PROJECT. NOTE TREES GONE, EARTH EMBANKMENTS GONE, PIPING STAGED IN CIRCLE, TRENCHING FOR RELOCATING PIPES (JUST ABOVE TWO RED TRUCKS), CONTRACTORS TRAILERS NEAR SET PROPERTY, EARTH-MOVING EQUIPMENT IN OPERATION.

Declassified in Part - Sanitized Copy Approved for Release 2012/08/27 : CIA-RDP90-00379R000100300003-9



13 DEC 1986

Declassified in Part - Sanitized Copy Approved for Release 2012/08/27 : CIA-RDP90-00379R000100300003-9

13 DEC 1986

NORTH PARKING LOT REPAVING. SECOND PHASE
COMPLETED, STRIPPING STARTED. THIRD PHASE PREP-
ARATION UNDER WAY. COMPLETED LATE DECEMBER 1986.

STAT

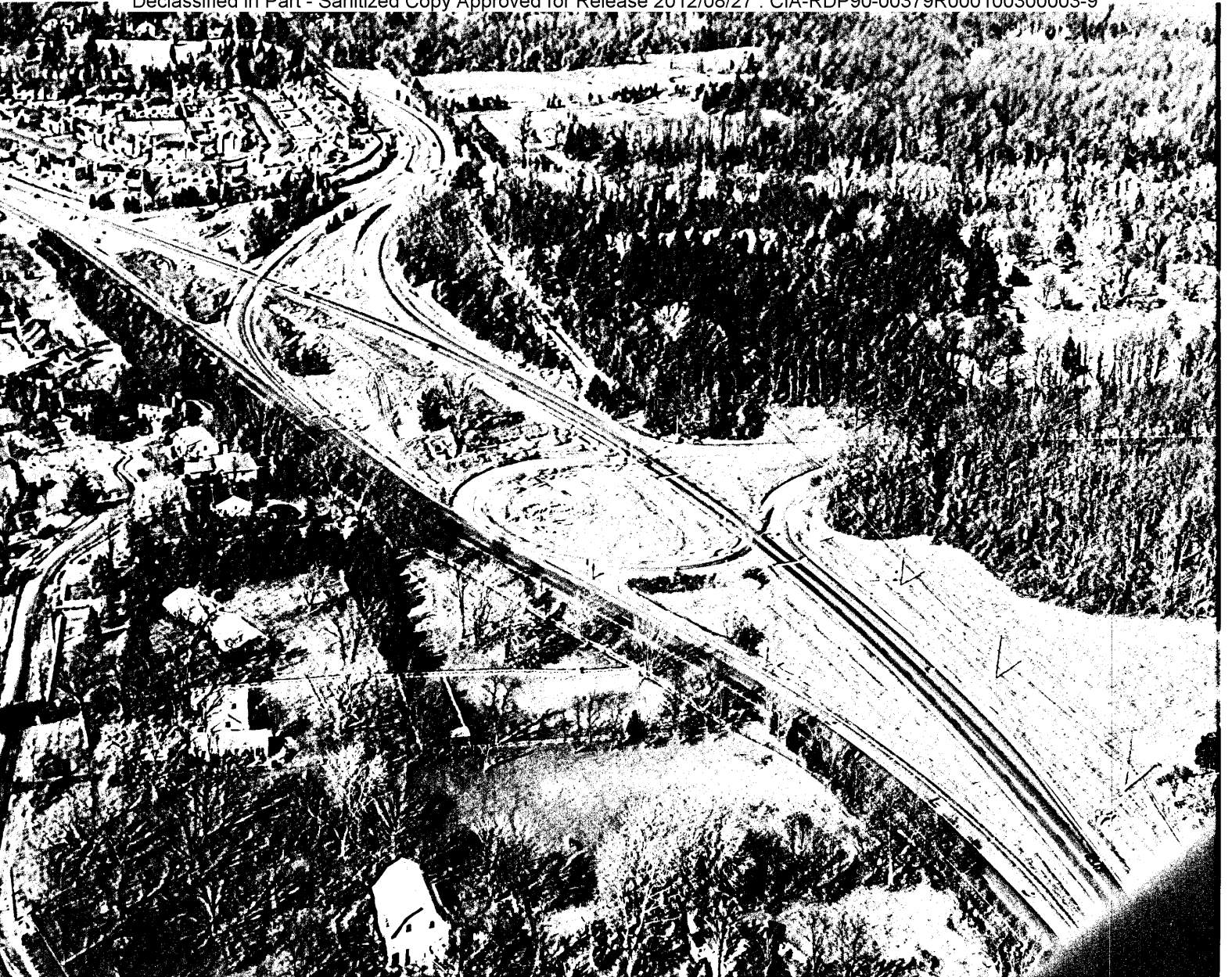
Declassified in Part - Sanitized Copy Approved for Release 2012/08/27 : CIA-RDP90-00379R000100300003-9

Page Denied

Next 5 Page(s) In Document Denied

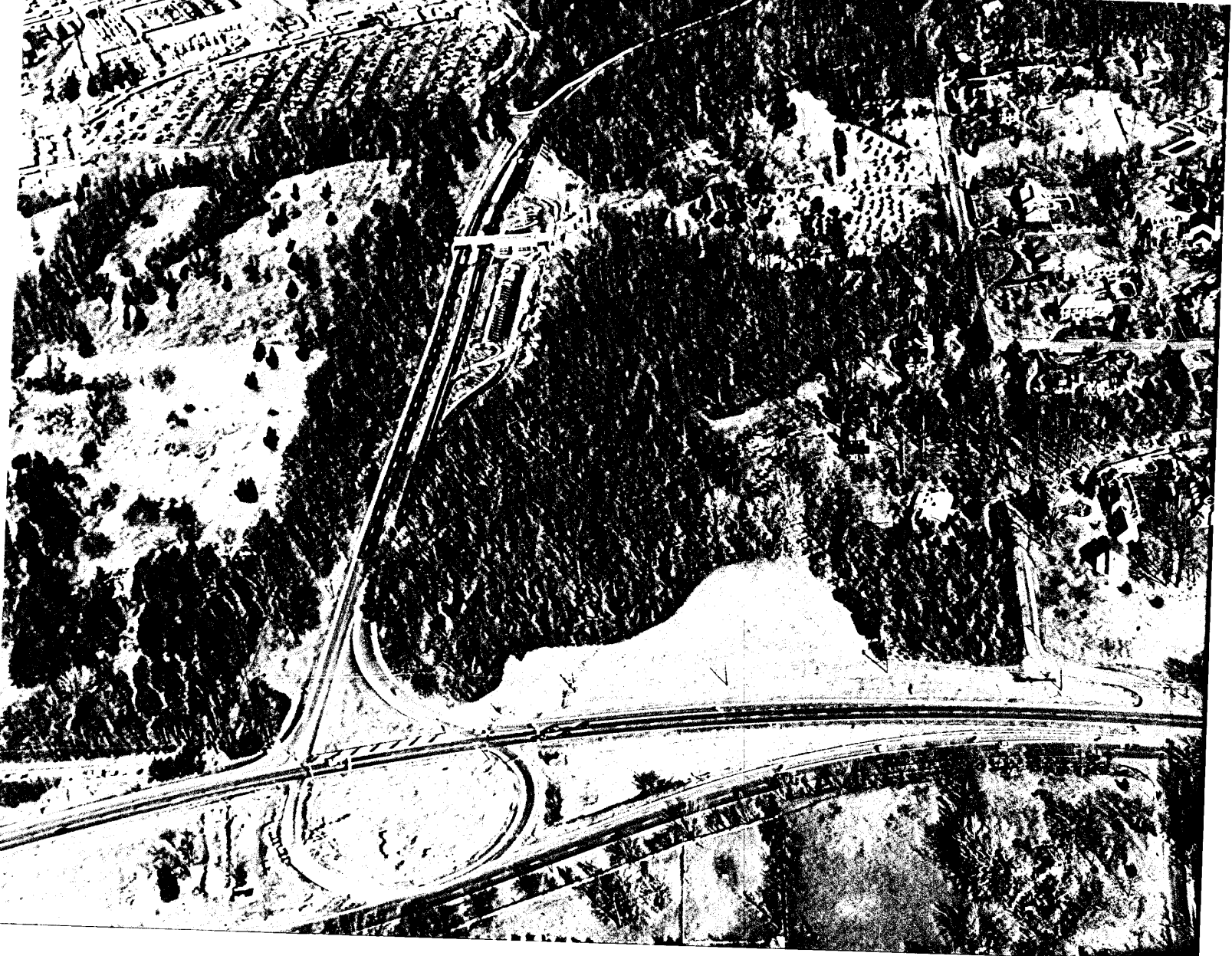
Declassified in Part - Sanitized Copy Approved for Release 2012/08/27 : CIA-RDP90-00379R000100300003-9

Declassified in Part - Sanitized Copy Approved for Release 2012/08/27 : CIA-RDP90-00379R000100300003-9



Declassified in Part - Sanitized Copy Approved for Release 2012/08/27 : CIA-RDP90-00379R000100300003-9

Declassified in Part - Sanitized Copy Approved for Release 2012/08/27 : CIA-RDP90-00379R000100300003-9

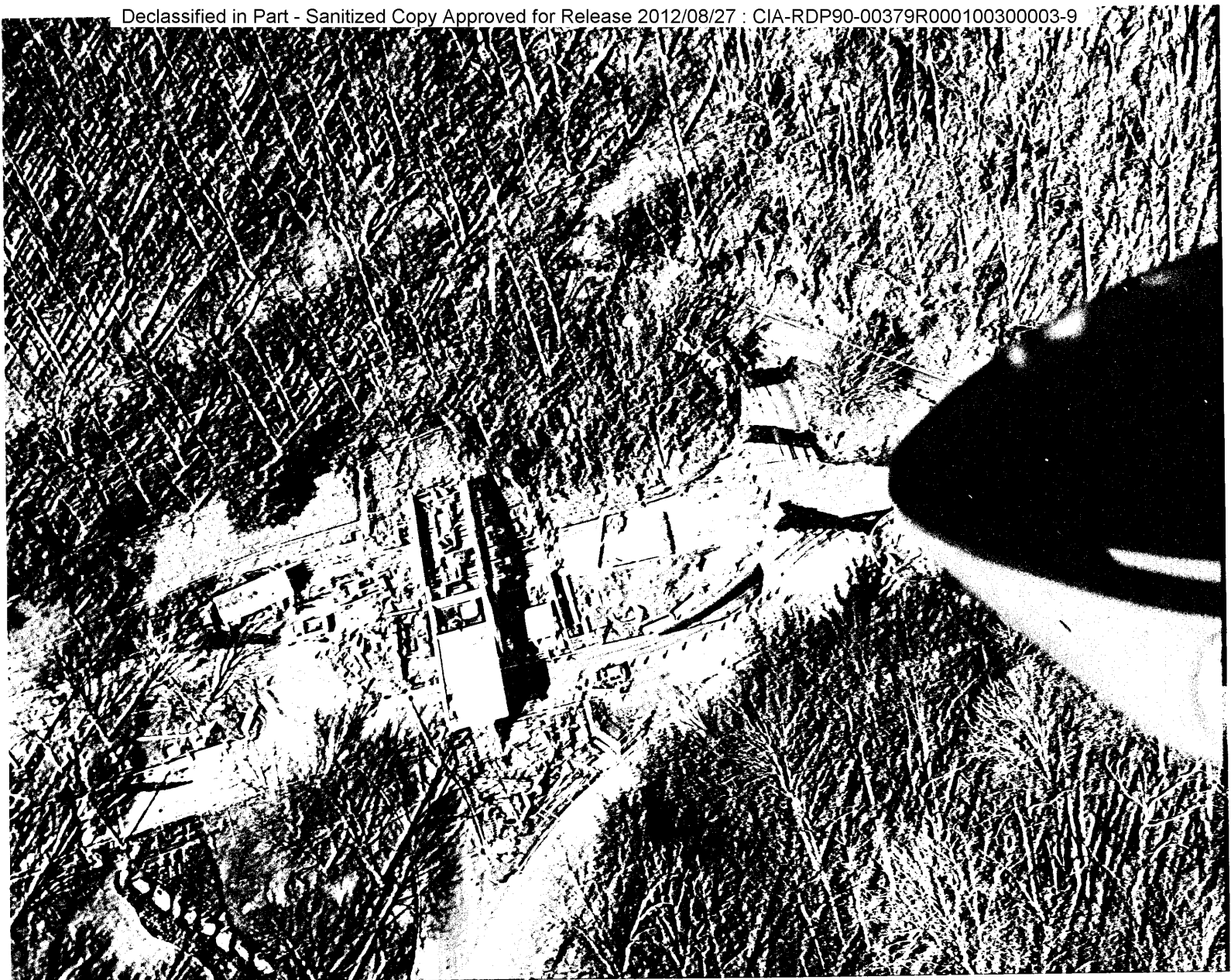


Declassified in Part - Sanitized Copy Approved for Release 2012/08/27 : CIA-RDP90-00379R000100300003-9

3 MAR 87 (AERIAL)

OVERALL VIEW OF NEW RT. 123 MAIN ENTRANCE VISITORS
CONTROL CENTER (VCC). CLEARLY VISIBLE ARE BADGED
EMPLOYEES INBOUND & OUTBOUND LANES; AND NON-BADGED
EMPLOYEES & VISITORS PARKING AREA AND ENTRANCE LANE
TO THE
FAR RIGHT.

Declassified in Part - Sanitized Copy Approved for Release 2012/08/27 : CIA-RDP90-00379R000100300003-9



Declassified in Part - Sanitized Copy Approved for Release 2012/08/27 : CIA-RDP90-00379R000100300003-9

3 MAR 87 (AERIAL)

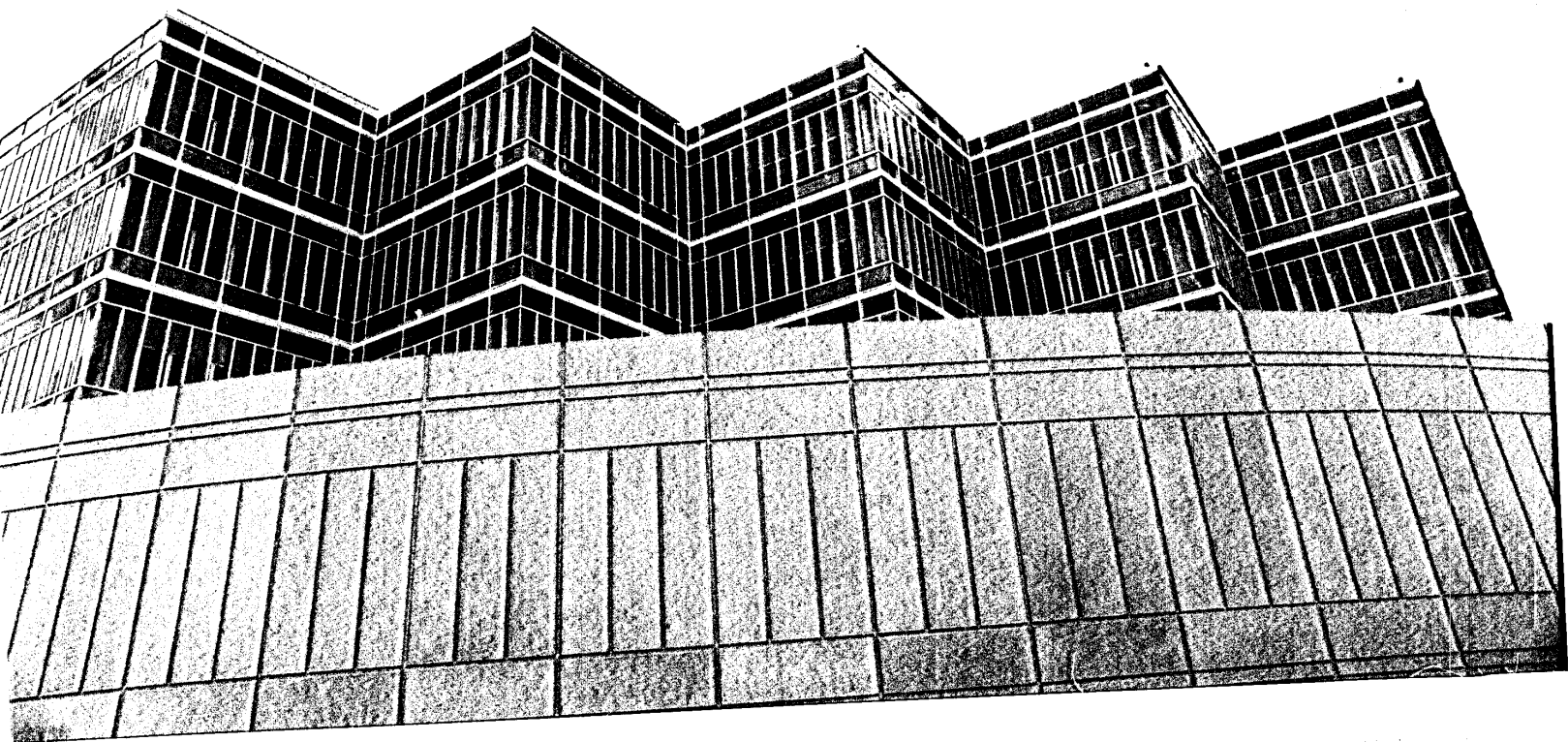
GEORGE WASHINGTON MEMORIAL PARKWAY (GWMP)

ENTRANCE VISITORS CONTROL CENTER (VCC)

UNDER CONSTRUCTION.

Example

Declassified in Part - Sanitized Copy Approved for Release 2012/08/27 : CIA-RDP90-00379R000100300003-9

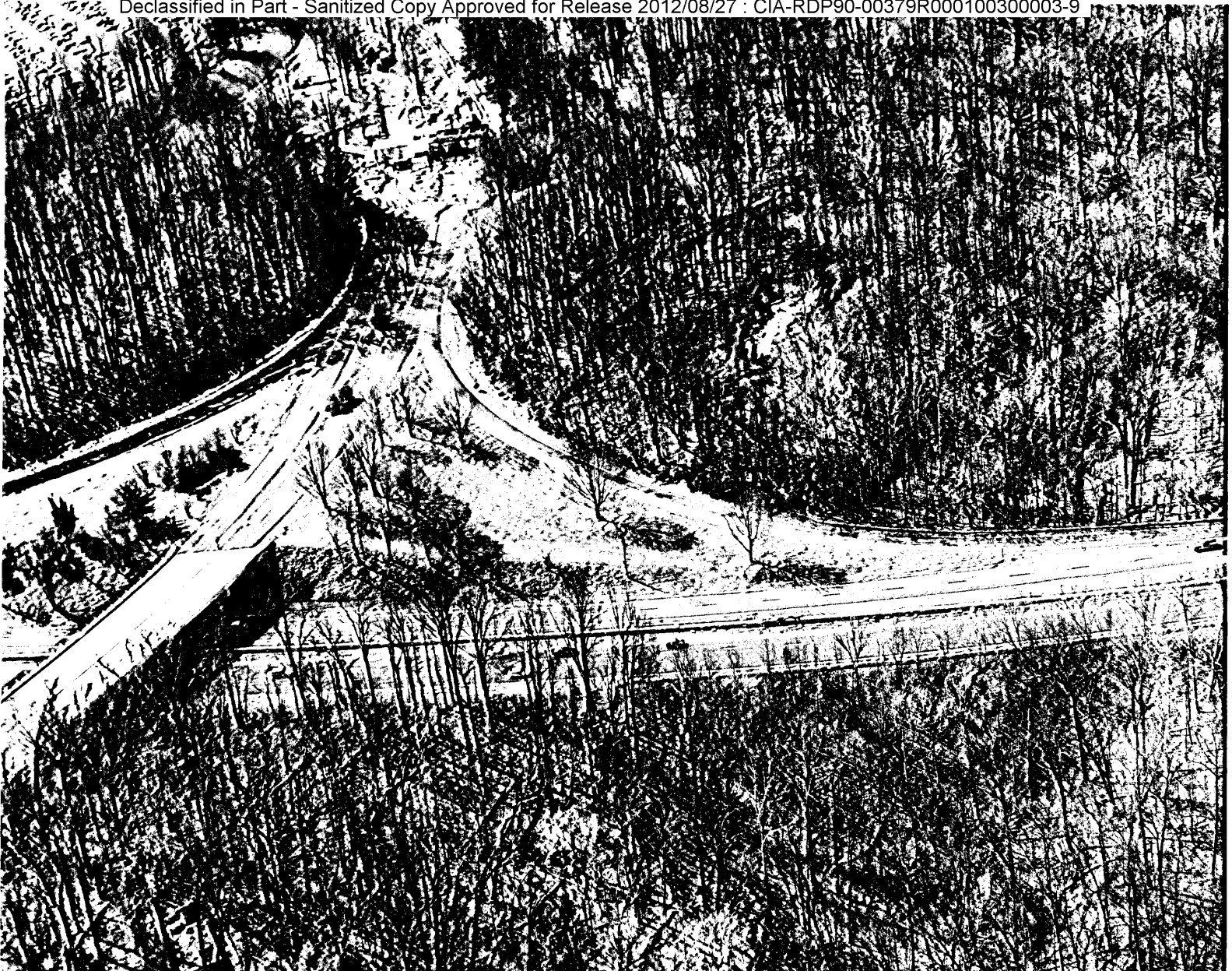


Declassified in Part - Sanitized Copy Approved for Release 2012/08/27 : CIA-RDP90-00379R000100300003-9

4 MARCH 1987

NORTH TOWER AS SEEN FROM
IN FRONT OF P & PD BUILDING.

Declassified in Part - Sanitized Copy Approved for Release 2012/08/27 : CIA-RDP90-00379R000100300003-9



Declassified in Part - Sanitized Copy Approved for Release 2012/08/27 : CIA-RDP90-00379R000100300003-9

3 MAR 87 (AERIAL)

G.W.M.P. 1000' ACCELERATION LANE COMPLETED EXCEPT
FOR FINISHING CAPSTONE ON MEDIUM STRIP BARRICADE
WALL (EXPECTED TO BE COMPLETED α MAY 87). ACC. LANE
ALLOWS AGENCY EMPLOYEES TO MERGE ^{SAFELY} AT SPEED WITH
NORTHBOUND (TOWARDS BELTWAY, LEFT-TO-RIGHT IN PICTURE)
GWMP TRAFFIC.