

CR
PH

MISSION COVERAGE PLOTS

MISSION G 3023

9 JANUARY 1961



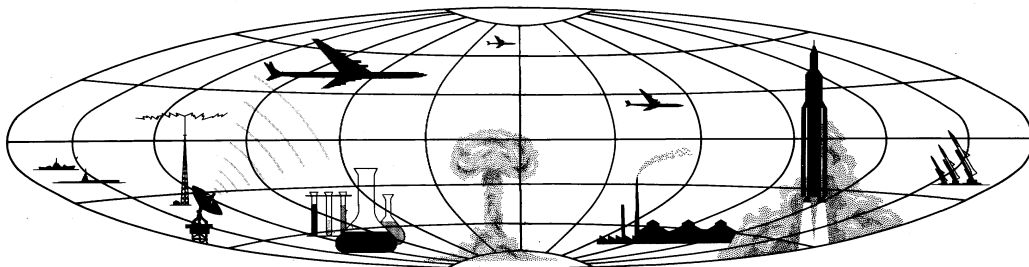
CIA

Handle Via **SECRET** Control Only

WARNING

This document contains classified information affecting the national security of the United States within the meaning of the espionage laws U.S. Code Title 18, Sections 793, 794, and 798. The law prohibits its transmission or the revelation of its contents in any manner to an unauthorized person, or well as its use in any manner prejudicial to the safety or interest of the United States or for the benefit of any foreign government to the detriment of the United States. It is to be seen only by U.S. Personnel especially indoctrinated and authorized to receive TALENT information. Its security must be maintained in accordance with TALENT regulations.

Published and Disseminated by CENTRAL INTELLIGENCE AGENCY Photographic Intelligence Center



SECRET

TOP SECRET-CHES

Approved For Release 2000/06/01 : CIA-RDP89B00569R000100040001-9

MISSION COVERAGE PLOTS

**MISSION G 3023
9 JANUARY 1961**

PIC/MCP-4/61
March 1961

Published and Disseminated by
CENTRAL INTELLIGENCE AGENCY
PHOTOGRAPHIC INTELLIGENCE CENTER

TOP SECRET-CHES

Approved For Release 2000/06/01 : CIA-RDP89B00569R000100040001-9

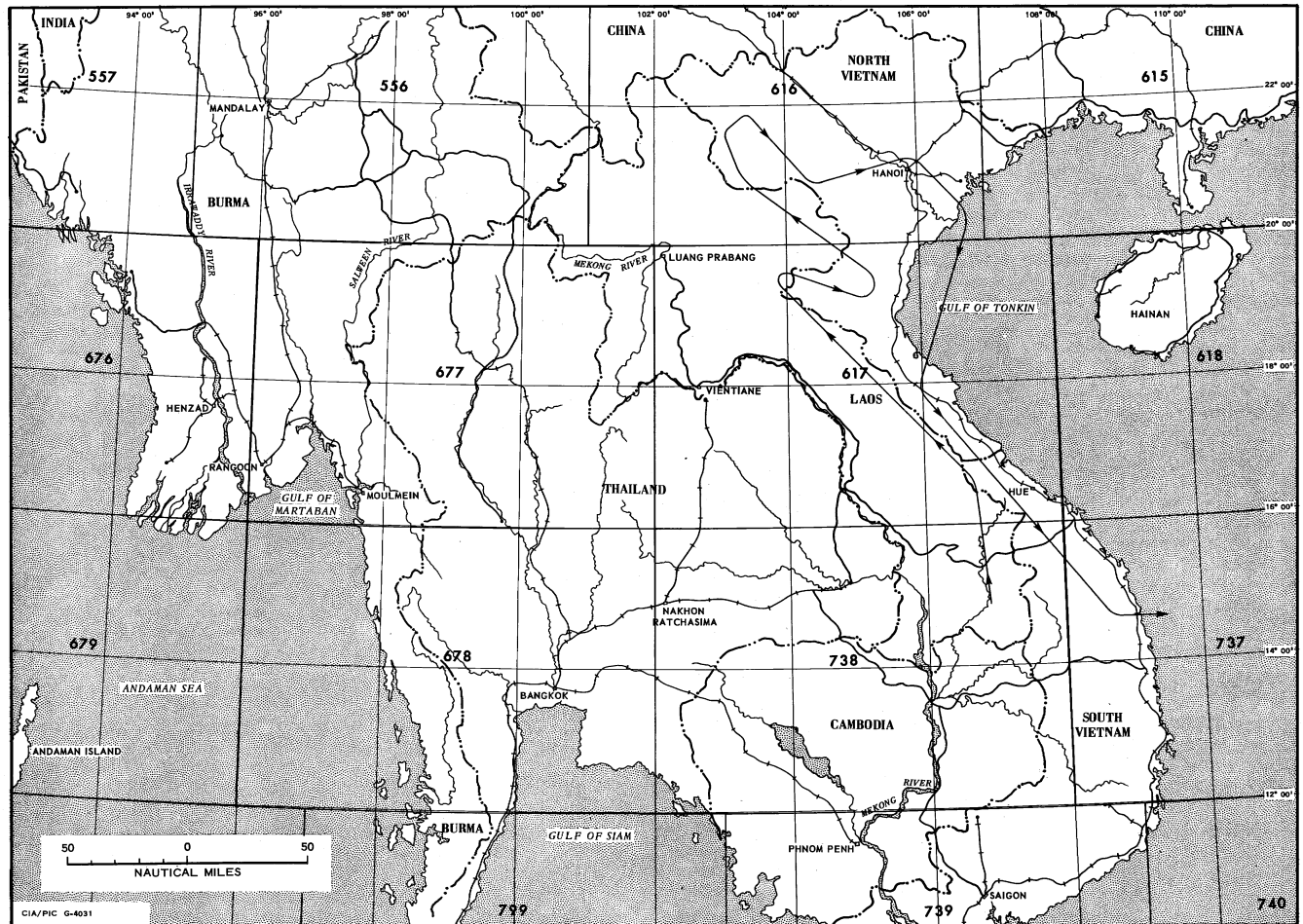
PREFACE

This publication contains the geographic location plots of the photography on Mission G 3023, dated 9 January 1961. These plots are presented on a WAC format that has been reduced for convenience to approximately 60 percent of the original size. There are six plot sheets in this publication, arranged in ascending order by Control Number.

The flight-line index on page iii indicates the approximate track of Mission G 3023.

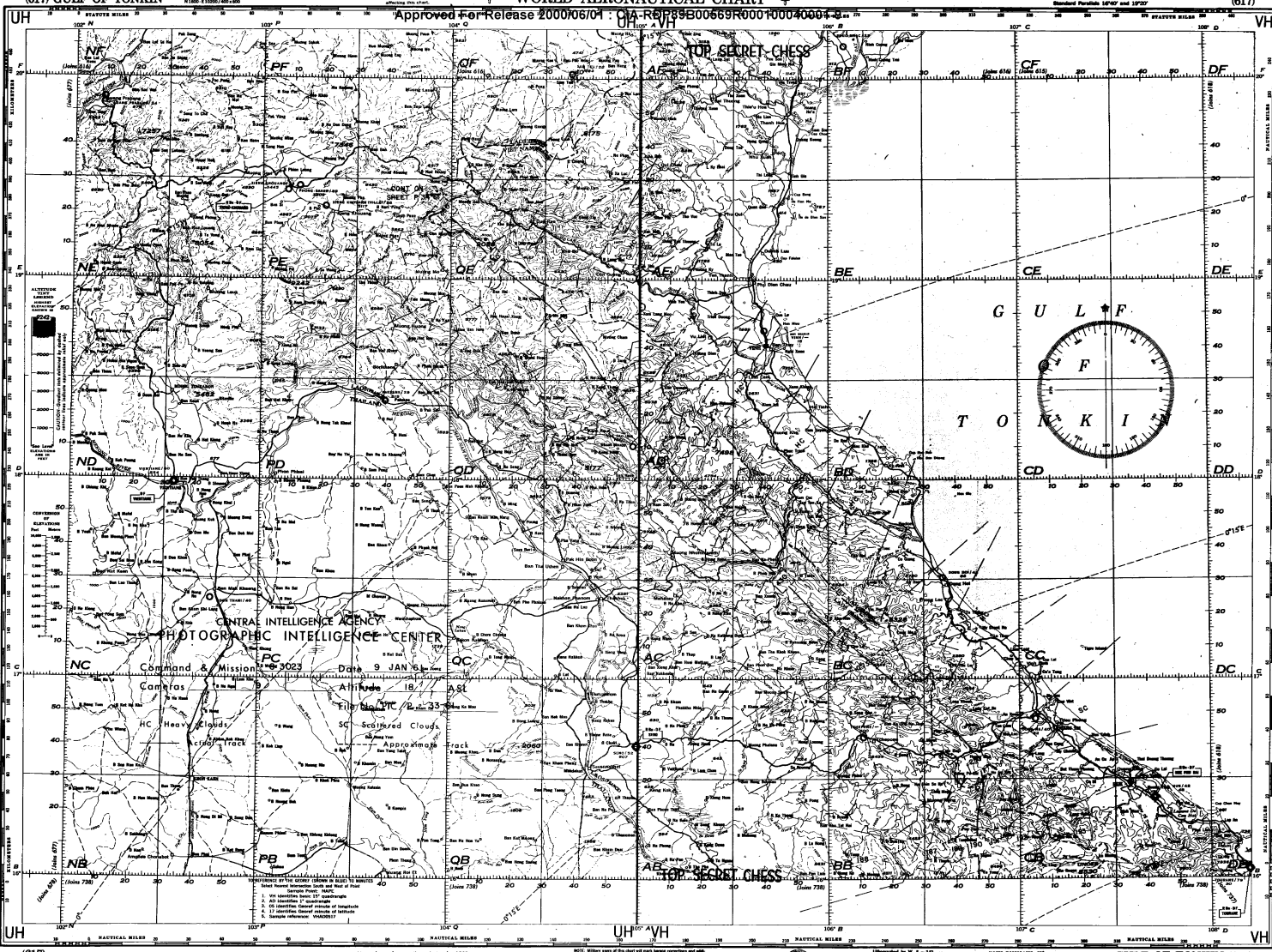
TABLE OF CONTENTS

Mission flight-line index	Page iii
PIC/P32-61	WAC 738
PIC/P33-61	WAC 617
PIC/P34-61	WAC 617
PIC/P35-61	WAC 616
PIC/P36-61	WAC 738
PIC/P37-61	WAC 737



MISSION FLIGHT-LINE INDEX. This map shows the approximate track of Mission G 3023.

Approved For Release 2000/06/04 : CIA-RDP89B00569R000100040001-9

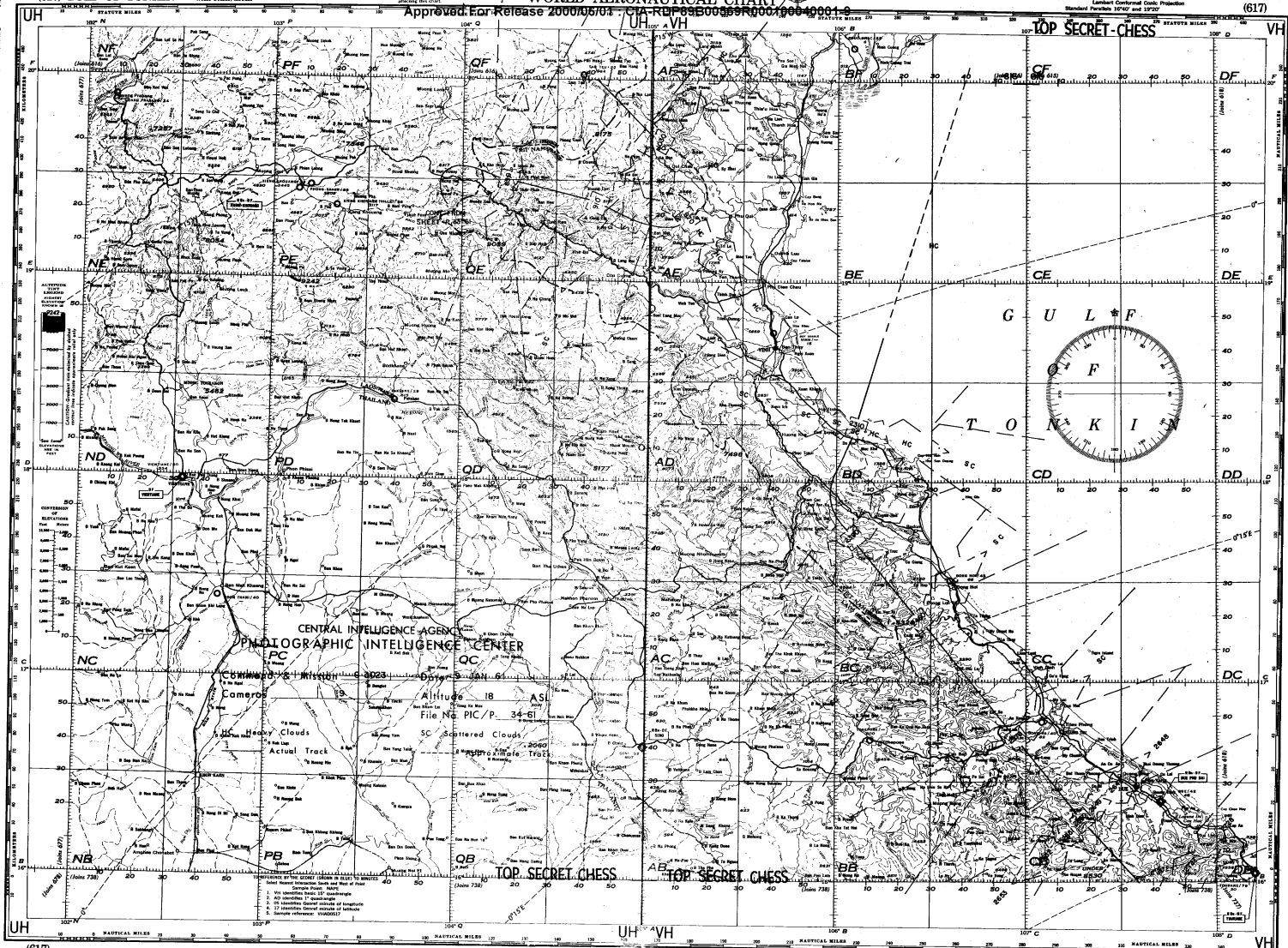


(617) GULF OF TONKIN

WORLD AERONAUTICAL CHART

Approved For Release 2000/06/01 : CIA-RDP89B00569R000100040001-9

(617)



(617)

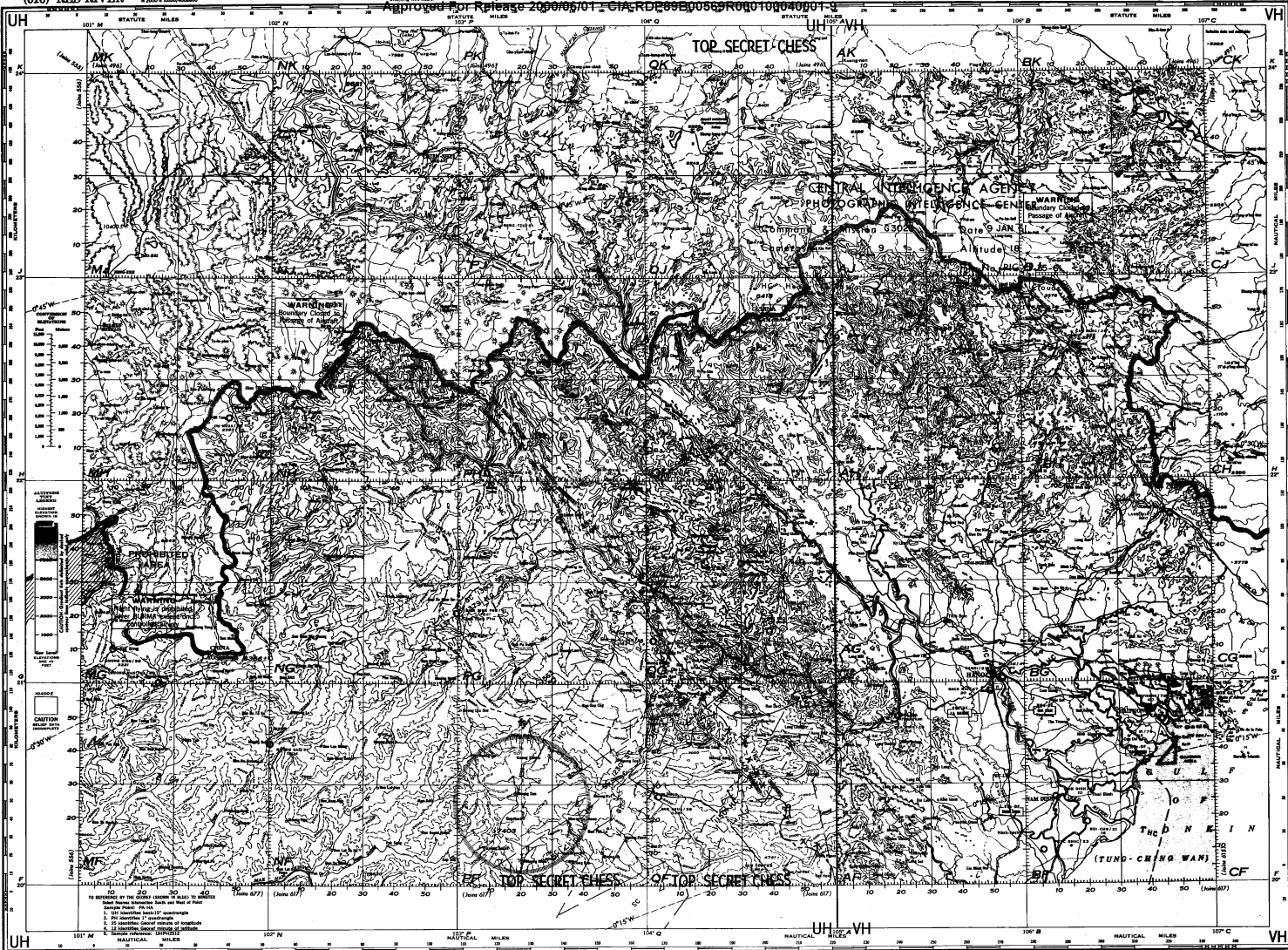
GULF OF TONKIN (617)

(616) RED RIVER

WORLD AERONAUTICAL CHART

(616)

Approved For Release 2000/06/01 : CIA-RDP89B00569R000100040001-9



(616)

Lines of equal magnetic variation for 1970 Annual rate of change 1' decrease

NOTE: Heavy lines of obstruction are shown on this chart. They may vary in their direction and height in 1970. AIRCRAFT CHART AND OBSTRUCTION CLEARANCE REGULATIONS, U.S.C.

Copyright 1968 by the National Aeronautics and Space Administration. All rights reserved. No part of this chart may be reproduced without the express written permission of the National Aeronautics and Space Administration.

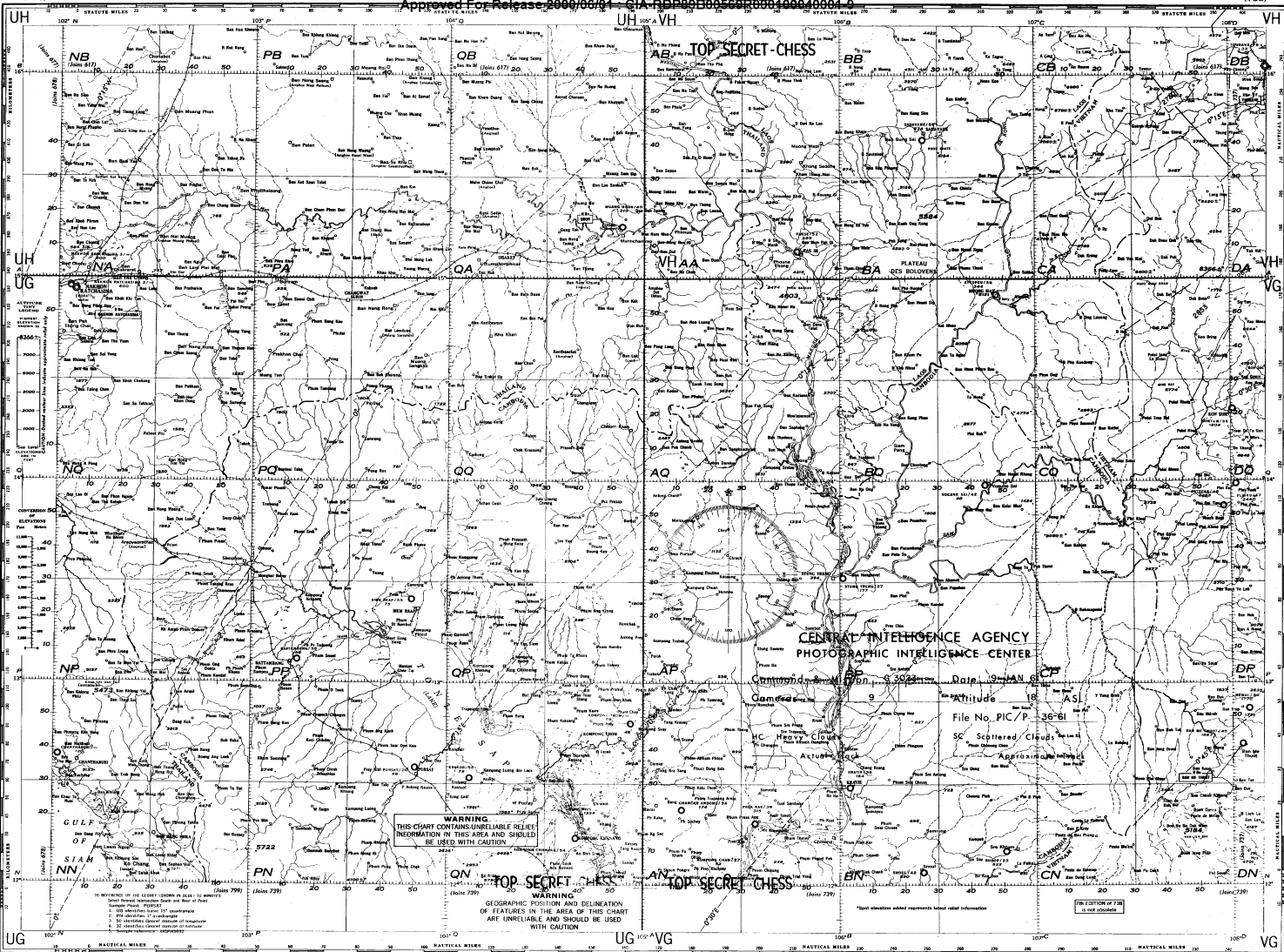
1:500,000 Spheroidal AIR INFO CURRENT MAY 1974

RED RIVER (616) HUSMA, CHINA-LAOS-VIET NAM

(738)

(738)

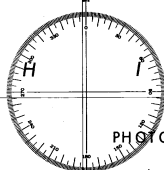
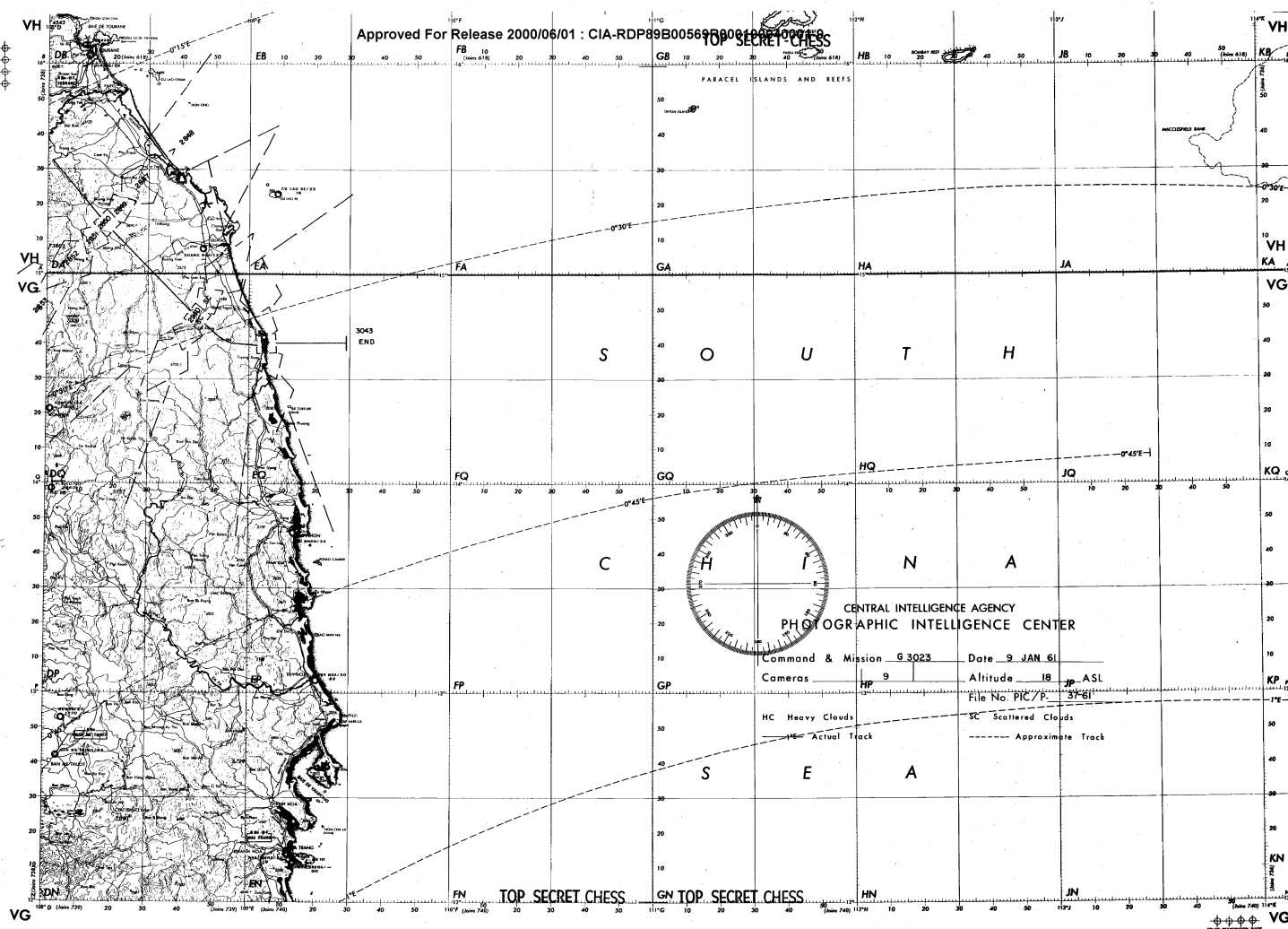
WORLD AERONAUTICAL CHART
Approved For Release 2000/06/01 : CIA-RDP89B00569R000100040001-9



(738)

(738)

TOP SECRET CHSS



CENTRAL INTELLIGENCE AGENCY
PHOTOGRAPHIC INTELLIGENCE CENTER

Command & Mission G 3023 Date 9 JAN 61
Cameras HP 9 Altitude 18,000 ASL

File No. PIC/P. 3761
HC Heavy Clouds SC Scattered Clouds
— Actual Track - - - - - Approximate Track

737

737

737

NOTES: 1. This chart is of Class II, that is, it contains information of a nature which, if disclosed, would be injurious to the national defense. It is intended for use by authorized personnel only. It is not to be distributed outside the Department of Defense. 2. This chart is not to be used for navigation. 3. This chart is not to be used for any other purpose without the express permission of the Department of Defense. 4. This chart is not to be used for any other purpose without the express permission of the Department of Defense.

WORLD AERONAUTICAL CHART

Scale	1:500,000
Projection	WGS 84
Units	Meters
Contour Interval	100 Meters
Spot Height	100 Meters
Spot Elevation	100 Meters
Spot Depression	100 Meters
Spot Elevation	100 Meters
Spot Depression	100 Meters

CAPE VARELLA
737

Approved For Release 2000/06/01 : CIA-RDP89B00569R000100040001-9

TOP SECRET

Approved For Release 2000/06/01 : CIA-RDP89B00569R000100040001-9

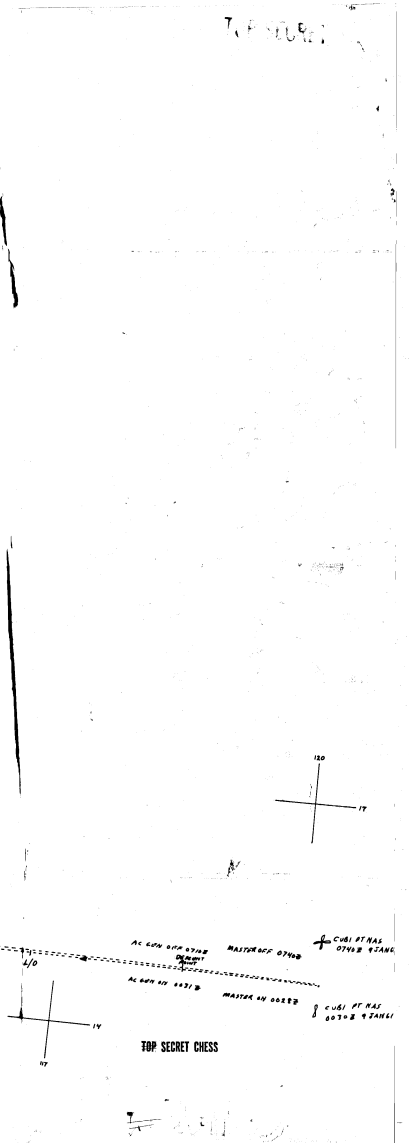
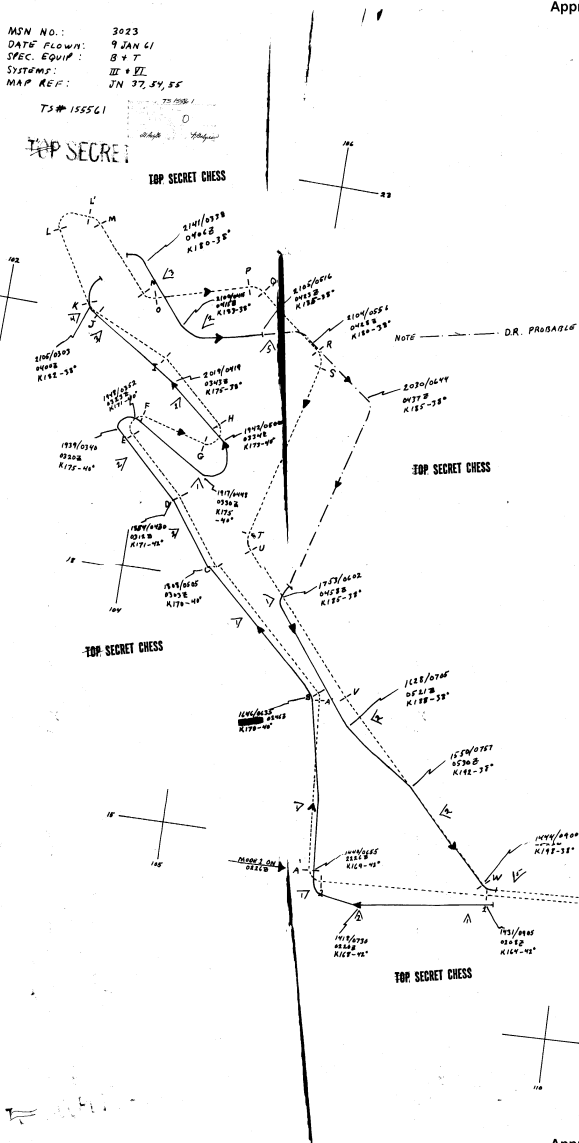
MSN NO.: 3023
DATE PLANNED: 9 JAN 61
SPEC. EQUIP.: B & T
SYSTEMS: III & VI
MAP REF.: JN 32, 54, 85

TS# 155561

TOP SECRET

TOP SECRET CHESS

Approved For Release 2000/06/01 : CIA-RDP89B00569R000100040001-9



Approved For Release 2000/06/01 : CIA-RDP89B00569R000100040001-9