



KOMPAKT
by KARDEX

**ELECTRONICALLY-CONTROLLED
MOVABLE SHELF
FILING SYSTEMS**

INNOVATION

Man's entry into outer space forever changed our thinking about what is possible and what is not. Earth-space assumed new proportions. Our perceptions of inner space altered as well. Where once concerned solely with building exteriors, designers turned their attention to the possibilities and limitations of functional office space. Space largely devoted to storage.

Kompakt Movable Shelf Filing Systems, revolutionary in design, now recover 46% of the unproductive space once devoted to conventional shelf filing and storage—up to 80% of the space once consumed by standard filing cabinets.

The modular track-mounted carriage accepts virtually any type of new or existing shelving and houses almost any size or weight of stored material. Kompakt by Kardex features flexible shelf placement and variable shelf depth, with standard ranges from nine to 30 feet in length.

System configuration can be planned to accommodate the modest storage needs of a small office or the high-volume requirements of a complex industrial concern. Because ranges are laid by the foot rather than by restrictive shelving unit lengths, it is

possible to custom-fit irregular room dimensions and work around such obstructions as columns, sprinkler systems, plumbing and electrical raceways.

Exclusive Multiple Aisles

In addition to space gained, Kompakt by Kardex helps improve filing efficiency through an exclusive multiple aisle feature. The multiple aisle concept, which permits simultaneous access by more than one operator, vastly increases retrieval speed over single aisle systems.

Exclusive Restricted Access

To provide vital security for sensitive documents and valuable materials, Kompakt by Kardex offers an exclusive restricted access feature which permits parts of the system to be key-locked. Any number of sections may be blocked from unauthorized access with no interference to adjoining shelving units or to normal operation. As an extra security precaution, the entire system can be locked after business hours.

Fixed Range Capability

In addition to its movable multiple aisle feature, Kompakt offers another versatile feature. Kompakt can be converted into a temporary fixed range mode. This is done easily by inserting the special

color-coded key into a slot on the front end of the range panel. This creates a situation where one range is in a temporary fixed position with independent range movement on either side. The fixed range can be converted to the movable mode by removing the key.

Exclusive Safety Bypass

Kompakt by Kardex ensures complete personal safety. To protect persons or articles between ranges, a full-length, floor-level safety bar and optional waist-high safety bar will stop range motion with less than 8 ounces of force. A safety reset switch must also be depressed before any aisle can be closed.

A Kompakt Movable Shelf Filing System further ensures operator protection even in the event of a safety system malfunction. The system can only be operated by inserting the safety by-pass key in the range that is affected. A tonal chime will sound when the range is operated, to serve as a reminder that the safety system in that range has been bypassed. An exclusive Kardex feature is that the safety systems in all other ranges remain fully operational.

STRUCTURE

A Kompakt Movable Shelf Filing System may be installed almost anywhere.

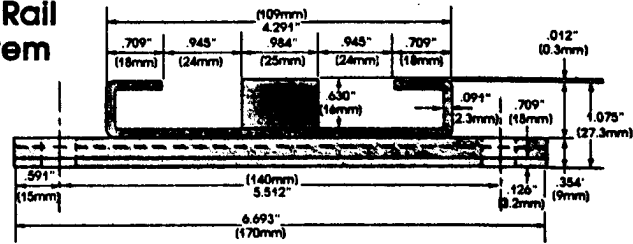
Low 1-1/16" (27 mm) rails may be positioned according to the structural requirements of the building for optimum load distribution. In new construction, these rails may be easily recessed into the floor. In existing buildings, the sub-floor may be carpeted or tiled to level with the top of the rails, or low angle ramp plates may be attached on both sides of each rail. All methods permit easy passage of foot traffic and wheeled carts.

Bolt-together design simplifies on-site assembly, and the shelving system components are easy to maneuver in buildings—a distinct advantage over bulky, pre-assembled welded units. Bolt-together assembly also greatly facilitates system relocation.

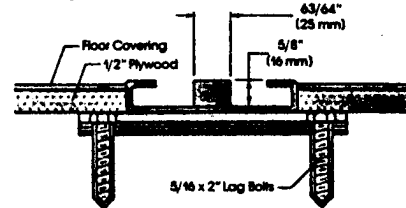


The low profile design of the rail ramp system permits easy passage of foot traffic and wheeled carts.

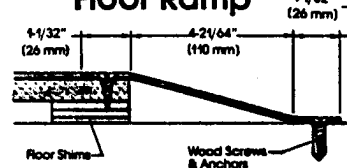
800 Rail System



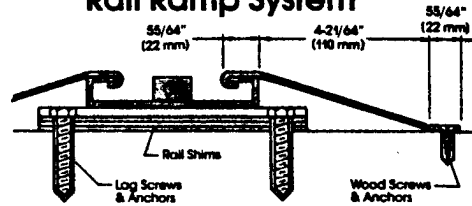
Plywood Floor System



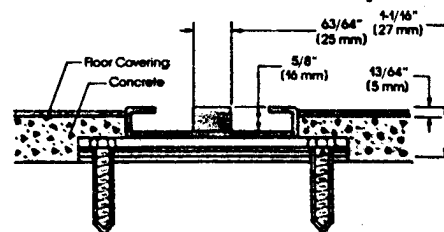
Floor Ramp



Rail Ramp System



Concrete Embedded System

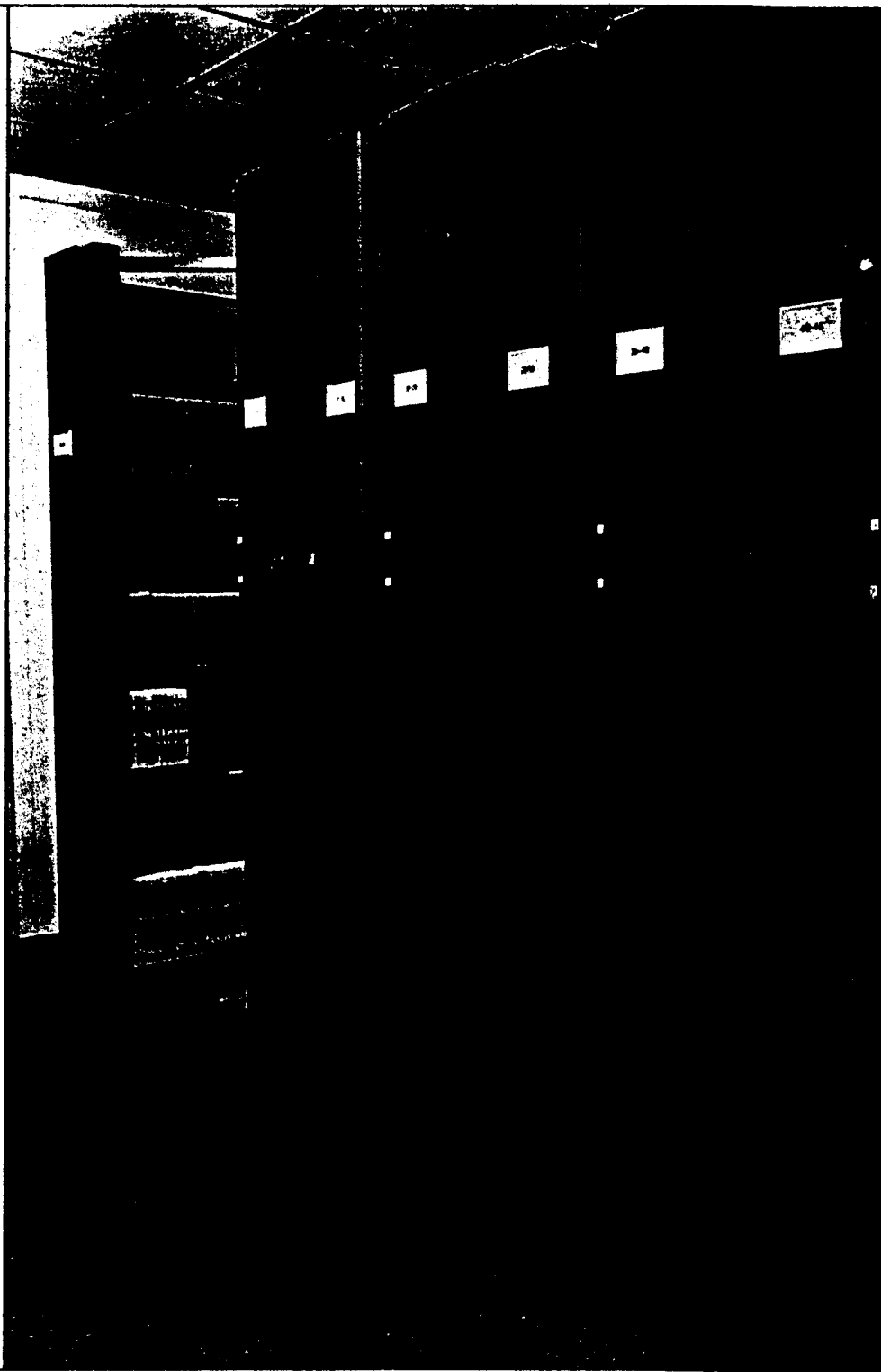


STYLE

Kompakt Movable Shelf Filing Systems offer sleek design versatility to complement any new or existing office decor.

End panels are available in a variety of accent colors and patterns which may be customized to match any interior graphic approach or color scheme. For convenient identification of stored materials, end panels are available with two snap-on index label holders. Color chips are available upon request from your Kardex dealer.

Kompakt's mobile storage ranges may be visually treated to integrate perfectly with fascia, soffits, corridors and other new or existing interior design features. In addition, dramatic range identification can be created with large numerical graphics.



FORM & FUNCTION

HOW KOMPAKT BY KARDEX WORKS

Listed Systems

The Kompakt System is listed by Underwriters' Laboratories when installed with the optional waist-level safety bar.

Double-Flanged Drive Wheels

Double-flanged roller wheels, made of durable cast and machined steel, carry heavy loads and ensure smooth, dependable operation. Standard 3-5/8" (9.2 cm) or Special Order 5" (12.7 cm) diameter wheels provide even movement of the entire range, eliminating misalignment on rails and preventing racking or twisting.

Drive Train

For additional stability and smooth operation, Kompakt by Kardex employs positive-contact gear-type drives and full-length shafts. All wheels on moving side of carriage are connected by intermediate heavy wall tubular shafts [O.D. 1.181" (3.0 cm), I.D. .866" (2.2 cm), and .1575" (0.4 cm) wall thickness]. Each double-flanged wheel is mounted on a .787" (2.0 cm) solid steel shaft which is supported by two permanently lubricated ball bearing pillow blocks.

Individual Range Drive Motor

For utmost economy, each movable range is equipped

with a minimum of one 60-watt gear motor with thermal overload protection. Each motor also has a specially-designed, reversible self-lubricating transfer drive which enhances smooth performance. In the event of power failure, an optional mechanical override feature allows continued operation.

800 Rail System

All rails are only 1-1/16" (27 mm) high, creating exceptional installation flexibility and greatly facilitating aisle entry. Rails provide a stable solid base and guiding system for the double-flanged wheels, and can be conveniently mounted in three ways to achieve optimum load distribution: surface with low-angle ramp plates, surface with false floors, or embedded in new floors.

Multi-Function Scissor Arm

Unique overhead scissor arm assemblies provide a natural raceway for range-to-range electrical connections. They also act as anti-tip devices by connecting and stabilizing the ranges.

Computer Interface

For maximum efficiency, Kompakt Systems can interface with new or existing computer systems. Ask your Kardex representative for details.

Pushbutton Operation

Single or multiple ranges are activated quickly and easily at the touch of a button. Aisles are locked open by depressing the OPEN/PROTECTED button on the end panel. The single control range has one button; the dual control range has two. Aisles are closed, and protection is deactivated by depressing a similarly-positioned RESET/SAFETY switch. For added user safety and convenience, the OPEN/PROTECTION button simultaneously activates indicator lights, safety bar, and optional overhead lighting.

Optional Overhead Lighting

For easier identification of stored materials, overhead lighting units, operating independent of building lighting, provide even illumination in each aisle to help reduce search time. The 40-watt fluorescent fixtures operate only when aisle is in use, thereby contributing to energy conservation.

Mechanical Override

The Kompakt System can be equipped with an optional mechanical override feature which, in the event of a power failure, would permit continued operation.

TECHNICAL DATA

DESIGNING WITH KOMPAKT

ITEM	BOOK		LETTER		LEGAL		X-RAY		JUMBO	
	DOUBLE FACED	SINGLE FACED	DOUBLE FACED	SINGLE FACED	DOUBLE FACED	SINGLE FACED	DOUBLE FACED	SINGLE FACED	DOUBLE FACED	SINGLE FACED
Range Types	Movable Movable (DC) Fixed	Movable* Movable* (DC) Fixed	Movable Movable (DC) Fixed	Movable* Movable* (DC) Fixed	Movable Movable (DC) Fixed	Movable* Movable* (DC) Fixed	Movable Movable (DC) Fixed	Movable Movable (DC) Fixed	Movable Movable (DC) Fixed	Movable Movable (DC) Fixed
Range Depths Available	18"-24" (45.7cm-61.0cm)	12"-18" (30.5cm-45.7cm)	24"-30" (61.0cm-76.2cm)	18"-24" (45.7cm-61.0cm)	30"-36" (76.2cm-91.4cm)	18"-24" (45.7cm-61.0cm)	36"-42" (91.4cm-106.7cm)	18"-24" (45.7cm-61.0cm)	42"-48" (106.7cm-121.9cm)	18"-24" (45.7cm-61.0cm)
Range Depths Using Kardex Shelving	N/A	N/A	26.75" (74.4cm)	14.5" Fixed (36.8cm) 18" Movable (45.7cm)	32.75" (83.2cm)	18" Movable (45.7cm) 17.5" Fixed (44.5cm)	38.75" (98.4cm)	20.5" Fixed (52.7cm) 20.5" Fixed (52.7cm)	N/A	N/A
Range Lengths Available as Standard (in 1/4" increments)	9'-30" (8.2 m-27.4 m)	9'-30" (8.2 m-27.4 m)	9'-30" (8.2 m-27.4 m)	9'-30" (8.2 m-27.4 m)	9'-30" (8.2 m-27.4 m)	9'-30" (8.2 m-27.4 m)	9'-24" (8.2 m-21.9 m)	9'-24" (8.2 m-21.9 m)	9'-30" (8.2 m-27.4 m)	9'-30" (8.2 m-27.4 m)
Allowable Load Per Carriage (per lineal ft.)	750 lbs./ft. standard book, letter, legal						1,000 lbs./ft. X-Ray		750 lbs./ft.-Jumbo	
	Maximum standard load per carriage 24,000 lbs. (contact factory if load exceeds these figures)									

DC - Dual Control *NOTE: Minimum depth for single face movable 18" - it is recommended that overhead Anti-Tip device be used on any single face movable at the end of a module.

Gaps Between Ranges	1" (2.54cm) approximate between end panels
Add to Range Length for End Panels	Add 5.64" (14.8cm) to range length
Carriage Height (including rail)	6.62" (16.8cm) (does not include shimming)

Height of System (including rail)	Shelving height + 10.06" (25.6cm) + shimming
Aisle Lighting	Adds 2.31" (5.9cm) to height of system
Overhead Anti-Tip	Adds 0 inches to height of system

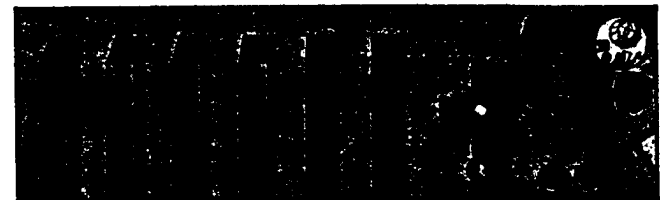
Rail Type	Standard 800 - 1-1/16" (3.0cm) high - 5/8" x 1" (6.25cm x 2.54cm) bar welded to a 13 gauge E channel form 23/32" high (0.74cm) and 4-19/64" (10.9cm) wide supported by 11 gauge hat section mounting plates spaced at 10-1/4 c to c intervals.
Standard Aisle Openings	Up to 39" (99.1cm) (greater opening available - contact factory)
Standard Wheels	Double flanged cast and machined steel 3-5/8" (9.2cm) in diameter (5" (12.7cm) wheel available as special - contact factory)
Range Travel Speed	2.5" (6.35cm) per second

Rail Data			
Height	1.075" (2.7 cm)	Polar Moment of Inertia About Neutral Axis	.073
Section Lengths	94.88" (240 cm)	Section Modulus	.181
Weight	4.85 lbs./ft.	Radius of Gyration	.243
Spacings	36" min. (91.4 cm)	Minimum Tensile Strength	70,000 PSI
	84" max. (213.4 cm)	Yield Strength	50,000 PSI

HOW KOMPAKT BY KARDEX CONQUERS TIME AND SPACE



Filing Cabinets 5400 filing inches
271 square feet



Fixed Shelving 6048 filing inches
174 square feet



Kompakt 6048 filing inches
90 square feet

OPTIONS AVAILABLE	
Restricted Access	Mechanical Override
Ability to select certain aisle openings as restricted — ranges will move to open aisles in other areas, but restricted aisles will only open if key is inserted. Up to 3 different keys available.	Ratchet type crank
Synchronized Aisle Lights	Color Available
Lights only on when aisle is open. Canopy top mounted.	Carriage and end frame — 125 Black End panel any standard Kardex visible color Laminate end panel — Vintage walnut

Motor Type	Power Source Required	Maximum No. Ranges 1 Power Source Excluding Lights
60 watt gear motor with thermal overload protection	20 amp branch circuit at 115 VAC ± 10% single phase per supply cord	12 movable ranges (each with one 60 watt motor)

Maximum No. Ranges 1 Power Source With Lights	$15 - .6 \times (\text{number of lights per range}) \times (\text{number of simultaneously opened aisles possible})$ 1.25 Conditions: Lights are 40 watt each, motors are 60 watt.
Safety System Available	1. Toe level bars (require 8 ounces of force to deactivate module) 2. Safety reset switch 3. Indicator light on end panel showing safety system status 4. Operational independent waist level bars (require 8 ounces of force to deactivate module)
Safety Bypass	Standard on each range. In the event of a safety system malfunction, module may be opened by inserting bypass key. Tone chime will sound on safety bypass. Only the range with safety malfunction is bypassed; all other ranges have safety systems operational.