



**Directorate of  
Intelligence**

# **Economic & Energy Indicators**

**25 October 1985**

*DI EEI 85-022  
25 October 1985*

This publication is prepared for the use of US Government officials, and the format, coverage, and content are designed to meet their specific requirements. US Government officials may obtain additional copies of this document directly or through liaison channels from the Central Intelligence Agency.

Requesters outside the US Government may obtain subscriptions to CIA publications similar to this one by addressing inquiries to:

**Document Expediting (DOCEX) Project  
Exchange and Gift Division  
Library of Congress  
Washington, D.C. 20540**

or: **National Technical Information Service  
5285 Port Royal Road  
Springfield, VA 22161**

Requesters outside the US Government not interested in subscription service may purchase specific publications either in paper copy or microform from:

**Photoduplication Service  
Library of Congress  
Washington, D.C. 20540**

or: **National Technical Information Service  
5285 Port Royal Road  
Springfield, VA 22161  
(To expedite service call the  
NTIS Order Desk (703) 487-4650**

Comments and queries on this paper may be directed to the DOCEX Project at the above address or by phone (202-287-9527), or the NTIS Office of Customer Services at the above address or by phone (703-487-4660). Publications are not available to the public from the Central Intelligence Agency.

**Economic & Energy  
Indicators**

	<i>Page</i>	
<b>Economic</b>	Industrial Production	1
	Gross National Product	1
	Consumer Prices	1
	Money Supply	2
	Unemployment Rate	2
	Foreign Trade	3
	Current Account Balance	3
	Export Prices in US \$	4
	Import Prices in US \$	4
	Exchange Rate Trends	5
	Money Market Rates	5
	Agricultural Prices	6
	Industrial Materials Prices	7
	<b>Energy</b>	World Crude Oil Production, Excluding Natural Gas Liquids
Big Seven: Inland Oil Consumption		9
Big Seven: Crude Oil Imports		9
OPEC: Crude Oil Official Sales Price		10
OPEC: Average Crude Oil Official Sales Price (Chart)		11

**Industrial Production***Percent change from previous period  
seasonally adjusted at an annual rate*

	1981	1982	1983	1984	1985					
					1st Qtr	2d Qtr	Jun	Jul	Aug	Sep
United States	2.6	-7.2	5.9	11.6	2.1	1.3	2.0	1.9	7.0	-1.0
Japan	1.0	0.4	3.5	11.1	-2.6	11.2	-21.6	22.7	-14.4	
West Germany	-2.3	-3.2	0.3	2.3	-3.2	12.2	43.9	-3.4		
France	-2.6	-1.5	1.1	2.3	-3.0	3.1	-16.6	43.5		
United Kingdom	-3.9	2.1	3.9	1.2	10.3	7.5	-3.3	-16.4	5.8	
Italy	-1.6	-3.1	-3.2	3.1	7.4	1.1	39.3	-35.9	6.5	
Canada	0.5	-10.0	5.3	8.8	0.7	3.5	20.0	25.6		

**Gross National Product <sup>a</sup>***Percent change from previous period  
seasonally adjusted at an annual rate*

	1981	1982	1983	1984	1985		
					1st Qtr	2d Qtr	3d Qtr
United States	2.5	-2.1	3.7	6.8	0.3	1.9	3.3
Japan	4.1	3.4	3.4	5.7	0.8	7.9	
West Germany	-0.2	-1.0	1.6	2.7	-4.6	5.6	
France	0.2	2.0	0.7	1.6	-1.1	2.3	
United Kingdom	-1.4	2.0	3.3	2.4	4.5	4.9	
Italy	0.2	-0.5	-0.4	2.6	3.2	3.4	
Canada	3.3	-4.4	3.3	5.0	4.2	4.1	

<sup>a</sup> Constant market prices.**Consumer Prices***Percent change from previous period  
seasonally adjusted at an annual rate*

	1981	1982	1983	1984	1985					
					1st Qtr	2d Qtr	Jun	Jul	Aug	Sep
United States	10.3	6.2	3.2	4.3	3.3	4.2	2.6	2.3	2.3	
Japan	4.9	2.6	1.8	2.3	2.3	1.1	7.9	4.2	-2.0	0.4
West Germany	6.0	5.3	3.3	2.4	3.5	2.7	-0.9	-1.1	-0.3	1.7
France	13.3	12.0	9.5	7.7	5.8	6.3	6.1	3.4	3.0	1.1
United Kingdom	11.9	8.6	4.6	5.0	7.1	9.4	4.5	0.6	2.7	1.8
Italy	19.3	16.4	14.9	10.6	10.2	10.5	9.2	6.5	7.1	2.2
Canada	12.5	10.8	5.8	4.3	5.3	4.0	3.1	3.1	3.7	4.4

**Money Supply, M-1 <sup>a</sup>***Percent change from previous period  
seasonally adjusted at an annual rate*

	1981	1982	1983	1984	1985					
					1st Qtr	2d Qtr	Jun	Jul	Aug	Sep
United States <sup>b</sup>	7.1	6.6	11.2	6.9	10.9	10.6	21.7	9.7	22.4	12.1
Japan	3.7	7.1	3.0	2.9	11.3	-0.4	57.0	-29.2	3.7	
West Germany	1.1	3.6	10.3	3.3	1.4	-0.4	6.8	2.5	11.7	
France	12.2	13.9	10.0	7.5	12.7					
United Kingdom	NA	NA	13.0	14.7	1.2	32.4	61.2	-20.9	45.7	0.9
Italy	11.2	11.6	15.2	12.0	20.0	12.5	7.7			
Canada	3.8	0.7	10.2	3.3	3.5	3.5	2.1	8.6	19.3	19.8

<sup>a</sup> Based on amounts in national currency units.<sup>b</sup> Including M1-A and M1-B.**Unemployment Rate <sup>a</sup>***Percent seasonally adjusted*

	1981	1982	1983	1984	1985					
					1st Qtr	2d Qtr	3d Qtr	Jul	Aug	Sep
United States	7.5	9.6	9.5	7.4	7.0	7.2	7.2	7.2	6.9	7.0
Japan	2.2	2.4	2.7	2.7	2.5	2.5		2.6	2.6	
West Germany	5.6	7.7	9.2	9.1	9.2	9.4	9.4	9.5	9.4	9.4
France	7.6	8.4	8.6	9.6	10.0	9.9	10.3	10.2	10.3	10.4
United Kingdom	10.0	11.6	12.4	12.6	12.9	13.1	13.2	13.2	13.3	13.1
Italy	8.4	9.1	9.9	10.4	10.8	10.2				
Canada	7.5	11.1	11.8	11.3	11.1	10.6	10.3	10.4	10.3	10.1

<sup>a</sup> Unemployment rates for France are estimated.

**Foreign Trade <sup>a</sup>***Billion US \$, f.o.b.*

	1981	1982	1983	1984	1985				
					1st Qtr	2d Qtr	Jul	Aug	Sep
<b>United States <sup>b</sup></b>									
Exports	233.5	212.3	200.7	217.6	55.7	52.6	17.4	17.4	
Imports	261.0	244.0	258.2	325.6	84.4	86.4	26.6	26.1	
Balance	-27.5	-31.6	-57.5	-108.0	-28.7	-33.8	-9.2	-8.7	
<b>Japan</b>									
Exports	149.6	138.2	145.5	168.2	40.4	42.5	14.4	14.6	
Imports	129.5	119.7	114.1	124.1	28.9	29.5	9.7	9.6	
Balance	20.1	18.6	31.5	44.1	11.6	13.0	4.7	5.0	
<b>West Germany</b>									
Exports	175.4	176.4	169.5	171.9	40.9	43.7	17.2	15.8	
Imports <sup>c</sup>	163.4	155.3	152.8	153.1	36.5	37.2	14.4	14.1	
Balance	11.9	21.1	16.6	18.8	4.4	6.5	2.7	1.7	
<b>France</b>									
Exports	106.3	96.4	95.1	97.5	22.5	24.4	8.4	8.8	8.9
Imports	115.6	110.5	101.0	100.3	23.6	24.7	8.8	8.8	9.2
Balance	-9.3	-14.0	-5.9	-2.8	-1.1	-0.4	-0.4	0	-0.3
<b>United Kingdom</b>									
Exports	102.5	97.1	92.1	93.7	22.7	25.4	8.7	8.4	
Imports	94.6	93.1	93.7	99.1	24.1	25.7	8.8	8.6	
Balance	7.9	4.0	-1.6	-5.3	-1.4	-0.3	-0.1	-0.3	
<b>Italy</b>									
Exports	75.4	74.0	72.8	73.6	17.7	18.2	6.4	7.0	
Imports	91.2	86.8	80.6	84.4	21.6	21.9	6.9	7.2	
Balance	-15.9	-12.8	-7.9	-10.8	-3.8	-3.6	-0.6	-0.2	
<b>Canada</b>									
Exports	70.5	68.5	73.7	86.5	22.0	21.8	6.6	7.3	
Imports	64.4	54.1	59.3	70.6	17.9	18.5	6.4	6.6	
Balance	6.1	14.4	14.4	15.9	4.1	3.3	0.2	0.8	

<sup>a</sup> Seasonally adjusted.<sup>b</sup> Imports are customs values.<sup>c</sup> Imports are c.i.f.**Current Account Balance <sup>a</sup>***Billion US \$*

	1981	1982	1983	1984	1985			
					1st Qtr	2d Qtr	Jul	Aug
United States	6.3	-9.2	-41.6	-101.5	-30.3	-31.8		
Japan	4.8	6.9	20.8	35.0	6.8	13.3	5.0	3.5
West Germany	-6.8	3.3	4.2	6.0	1.7	3.1	0.8	-0.3
France	-4.7	-12.1	-4.9	0.9	-0.8	0.5		
United Kingdom	15.3	8.5	4.5	1.3	-0.6	1.5	0.5	0.3
Italy	-8.6	-5.7	0.6	-3.2				
Canada	-5.0	2.1	1.4	1.9	0.6	0.3		

<sup>a</sup> Seasonally adjusted; converted to US dollars at current market rates of exchange.

**Export Prices in US \$***Percent change from previous period  
at an annual rate*

	1981	1982	1983	1984	1985				
					1st Qtr	2d Qtr	Jun	Jul	Aug
United States	9.2	1.5	1.0	1.4	0.3	1.8	3.3	-7.8	-4.3
Japan	5.5	-6.4	-2.4	0.2	-11.9	14.1	-1.7		
West Germany	-14.9	-2.8	-3.2	-7.1	-18.9	26.8	18.2	84.7	58.2
France	-12.0	-5.5	-4.8	-2.9	-13.4	28.9	8.8		
United Kingdom	NA	NA	-6.2	-5.1	-16.2	57.1	23.8	101.5	1.0
Italy	-7.8	-3.0	-4.4	-5.2	-13.0				
Canada	3.9	-2.0	-1.3	-3.7	-0.2	-7.1	-20.7	104.6	-22.7

**Import Prices in US \$***Percent change from previous period  
at an annual rate*

	1981	1982	1983	1984	1985				
					1st Qtr	2d Qtr	Jun	Jul	Aug
United States	5.3	-2.0	-3.7	1.7	-10.4	-0.4	-9.9	3.5	0.3
Japan	3.6	-7.4	-5.0	-2.8	-10.9	3.1	15.7		
West Germany	-8.6	-4.7	-5.2	-4.8	-13.2	19.9	2.7	56.2	28.5
France	-7.8	-7.2	-7.0	-3.8	-10.6	15.4	4.8		
United Kingdom	NA	NA	-5.7	-4.6	-15.4	46.1	11.1	89.7	-17.2
Italy	1.0	-5.3	-6.6	-3.7	-8.5				
Canada	8.7	-1.1	-3.3	-0.1	-4.5	-2.2	-2.7	26.5	22.5

**Exchange Rate Trends***Percent change from previous period  
at an annual rate*

	1981	1982	1983	1984	1985					
					1st Qtr	2d Qtr	Jul	Aug	Sep	
<b>Trade-Weighted</b>										
United States	10.5	10.6	5.8	9.1	26.0	-11.3				
Japan	9.3	-5.7	10.4	6.2	0.9	7.8				
West Germany	-2.1	7.0	5.8	1.0	-0.2	2.1				
France	-5.1	-6.1	-4.7	-2.1	0.9	4.8				
United Kingdom	2.5	-2.1	-5.0	-2.5	-10.5	39.9				
Italy	-9.2	-5.1	-1.6	-3.1	1.3	-10.5				
Canada	0.3	0.2	2.3	-2.3	-2.1	-10.2				
<b>Dollar Cost of Foreign Currency</b>										
Japan	2.7	-12.9	4.6	0	-19.6	9.9	31.2	17.7	6.5	
West Germany	-24.6	-7.2	-5.2	-11.5	-28.0	19.0	46.0	39.3	-20.0	
France	-28.7	-20.8	-15.9	-14.7	-26.7	19.6	47.7	36.1	-17.9	
United Kingdom	-13.2	-13.4	-13.3	-11.9	-28.6	59.9	142.2	6.2	-15.6	
Italy	-32.8	-18.8	-12.3	-15.6	-30.3	9.5	30.6	15.6	-21.0	
Canada	-2.5	-2.9	0.1	-5.1	-10.5	-5.0	12.5	-5.4	-10.8	

**Money Market Rates***Percent*

	1981	1982	1983	1984	1985					
					1st Qtr	2d Qtr	Jun	Jul	Aug	
<b>United States</b> 90-day certificates of deposit, secondary market	16.24	12.49	9.23	10.56	8.76	8.61				
<b>Japan</b> loans and discounts (2 months)	7.79	7.23	NA	6.66	6.55	6.54	6.53	6.52	6.51	
<b>West Germany</b> interbank loans (3 months)	12.19	8.82	5.78	5.96	6.12	5.98				
<b>France</b> interbank money market (3 months)	15.47	14.68	12.51	11.74	10.64	10.58				
<b>United Kingdom</b> sterling interbank loans (3 months)	13.85	12.24	10.12	9.91	12.98	12.67				
<b>Italy</b> Milan interbank loans (3 months)	20.13	20.15	18.16	15.91	15.78	15.37				
<b>Canada</b> finance paper (3 months)	18.46	14.48	9.53	11.30	10.59					
<b>Eurodollars</b> 3-month deposits	16.87	13.25	9.69	10.86	9.04	8.74				



**Agricultural Prices**

	1980	1981	1982	1983	1984	1985				
						1st Qtr	2d Qtr	3d Qtr	Aug	Sep
<b>Bananas</b> Fresh imported, (Total world, \$ per metric ton)	177	214	217	232	243	110.4	111.6	NA	110.0	NA
<b>Beef</b> (¢ per pound)										
<b>Australia</b> (Boneless beef, f.o.b. US Ports)	125.2	112.1	108.4	110.7	101.1	100.2	93.3	93.6	93.8	94.3
<b>United States</b> (Wholesale steer beef, midwest markets)	104.3	100.0	101.4	97.6	100.9	96.6	81	80.4	79.0	80.7
<b>Cocoa</b> (¢ per pound)	113.5	89.8	74.3	92.1	106.2	99.2	96.4	98.4	98.2	101.3
<b>Coffee</b> (\$ per pound)	1.54	1.28	1.40	1.32	1.44	1.44	1.42	1.33	1.33	1.33
<b>Corn</b> (US #3 yellow, c.i.f. Rotterdam, \$ per metric ton)	150	150	123	148	150	133	133	118	115	113
<b>Cotton</b> (World Cotton Prices, "A" index, c.i.f. Osaka, US ¢/lb.)	93.20	72.69	74.48	85.71	63.91	62.27	63.78	56.76	55.80	53.58
<b>Palm Oil</b> (United Kingdom 5% bulk, c.i.f., \$ per metric ton)	583	571	445	502	730	605	606	417	404	360
<b>Rice</b> (\$ per metric ton)										
<b>US</b> (No. 2, milled, 4% c.i.f. Rotterdam)	598	632	481	514	514	496	496	481	479	475
<b>Thai SWR</b> (100% grade B c.i.f. Rotterdam)	522	573	362	339	310	254	243	236	238	241
<b>Soybeans</b> (US #2 yellow, c.i.f. Rotterdam, \$ per metric ton)	296	288	244	282	283	240	236	213	209	206
<b>Soybean Oil</b> (Dutch, f.o.b. ex-mill, \$ per metric ton)	598	507	447	527	727	651	658	518	518	469
<b>Soybean Meal</b> (US, c.i.f. Rotterdam \$ per metric ton)	257	252	219	238	197	159	146	152	150	160
<b>Sugar</b> (World raw cane, f.o.b. Caribbean Ports, spot prices ¢ per pound)	29.03	16.93	8.42	8.49	5.18	3.69	2.96	4.21	4.35	5.14
<b>Tea</b> Average Auction (London) (¢ per pound)	101.4	91.0	89.9	105.2	156.6	126.9	82.8	72.3	72.2	73.3
<b>Wheat</b> (US #2. DNS c.i.f. Rotterdam, \$ per metric ton)	209	210	187	183	182	177	169	154	148	156
<b>Food Index</b> <sup>a</sup> (1980=100)	100	87.9	78.1	86.4	91.5	83.6	79.1	76.5	77.0	76.9

<sup>a</sup> The food index is compiled by *The Economist* for 14 food commodities which enter international trade. Commodities are weighted by 3-year moving averages of imports into industrialized countries.

**Industrial Materials Prices**

	1980	1981	1982	1983	1984	1985				
						1st Qtr	2d Qtr	3d Qtr	Aug	Sep
<b>Aluminum</b> (¢ per pound)										
Major US producer	71.6	77.3	76.0	77.7	81.0	81.0	81.0	81.0	81.0	81.0
LME cash	80.8	57.4	44.9	65.1	56.8	49.2	49.3	45.6	46.2	44.9
<b>Chrome Ore</b> (South Africa chemical grade, \$ per metric ton)										
	55.0	53.0	50.9	50.0	50.0	49.9	44.7	41.0	41.0	41.0
<b>Copper</b> <sup>a</sup> (bar, ¢ per pound)										
	98.7	79.0	67.1	72.0	62.4	62.1	67.6	64.5	65.3	62.3
<b>Gold</b> (\$ per troy ounce)										
	612.1	460.0	375.5	424.4	360.0	300.0	319.8	323.2	327.9	325.9
<b>Lead</b> <sup>a</sup> (¢ per pound)										
	41.1	32.9	24.7	19.3	20.0	17.2	17.3	18.3	18.6	18.4
<b>Manganese Ore</b> (48% Mn, \$ per long ton)										
	78.5	82.1	79.9	73.3	69.8	69.6	68.4	68.4	68.4	68.4
<b>Nickel</b> (\$ per pound)										
Cathode major producer	3.5	3.5	3.2	3.2	3.2	3.2	3.2	3.2	3.2	3.2
LME Cash	3.0	2.7	2.2	2.1	2.2	2.2	2.5	2.2	2.3	2.1
<b>Platinum</b> (\$ per troy ounce)										
Major producer	439.5	475.0	475.0	475.0	475.0	475.0	475.0	475.0	475.0	475.0
Metals week, New York dealers' price	677.0	446.0	326.7	422.6	358.2	269.3	275.4	294.0	298.2	316.1
<b>Rubber</b> (¢ per pound)										
Synthetic <sup>b</sup>	40.6	47.5	45.7	44.0	44.4	46.6	45.7	NA	37.3	NA
Natural <sup>c</sup>	73.8	56.8	45.4	56.2	49.6	42.0	41.5	42.4	42.5	43.3
<b>Silver</b> (\$ per troy ounce)										
	20.7	10.5	7.9	11.4	8.1	5.9	6.3	6.1	6.2	6.1
<b>Steel Scrap</b> <sup>d</sup> (\$ per long ton)										
	91.2	92.0	63.1	73.2	86.4	83.7	71.9	72.7	74.2	72.8
<b>Tin</b> <sup>a</sup> (¢ per pound)										
	761.3	641.4	581.6	590.9	556.6	501.1	541.3	571.0	574.6	562.7
<b>Tungsten Ore</b> (contained metal, \$ per metric ton)										
	18,219	18,097	13,426	10,177	10,243	11,515	10,974	10,648	10,714	11,068
<b>US Steel</b> (finished steel, composite, \$ per long ton)										
	486.2	543.5	567.3	590.2	611.61	617.83	617.83	617.84	617.84	617.84
<b>Zinc</b> <sup>a</sup> (¢ per pound)										
	34.4	38.4	33.7	34.7	41.5	40.0	39.5	33.4	33.6	31.7
<b>Lumber Index</b> <sup>e</sup> (1980=100)										
	100	95	84	114	105	100	107	NA	101	NA
<b>Industrial Materials Index</b> <sup>f</sup> (1980=100)										
	100	84.7	71.2	82.2	75.9	69.7	72.4	68.6	68.6	66.3

<sup>a</sup> Approximates world market price frequently used by major world producers and traders, although only small quantities of these metals are actually traded on the LME.

<sup>b</sup> S-type styrene, US export price.

<sup>c</sup> Quoted on New York market.

<sup>d</sup> Average of No. 1 heavy melting steel scrap and No. 2 bundles delivered to consumers at Pittsburgh, Philadelphia, and Chicago.

<sup>e</sup> This index is compiled by using the average of 11 types of lumber whose prices are regarded as bellwethers of US lumber construction costs.

<sup>f</sup> The industrial materials index is compiled by *The Economist* for 18 raw materials which enter international trade. Commodities are weighted by 3-year moving averages of imports into industrialized countries.

**World Crude Oil Production  
Excluding Natural Gas Liquids**
*Thousand b/d*

	1980	1981	1982	1983	1984	1985				
						1st Qtr	2d Qtr	Jun	Jul	Aug
<b>World</b>	<b>59,463</b>	<b>55,827</b>	<b>53,014</b>	<b>52,588</b>	<b>53,827</b>	<b>53,462</b>	<b>53,413</b>	<b>50,214</b>		
<b>Non-Communist countries</b>	<b>45,243</b>	<b>41,602</b>	<b>38,810</b>	<b>38,228</b>	<b>39,257</b>	<b>38,672</b>	<b>37,665</b>	<b>35,634</b>	<b>36,957</b>	
Developed countries	12,859	12,886	13,276	13,864	14,302	14,704	14,617	14,230	14,651	
United States	8,597	8,572	8,658	8,680	8,735	8,871	8,972	8,975	8,958	
Canada	1,424	1,285	1,270	1,356	1,411	1,463	1,445	1,436	1,450	
United Kingdom	1,619	1,811	2,094	2,299	2,535	2,660	2,471	2,190	2,387	
Norway	528	501	518	614	700	719	728	652	827	
Other	691	717	736	915	921	991	1,001	977	1,029	
Non-OPEC LDCs	5,443	6,036	6,633	6,823	7,515	7,733	7,802	7,626	7,726	
Mexico	1,936	2,321	2,746	2,666	2,746	2,711	2,724	2,555	2,620	
Egypt	595	598	665	689	827	877	875	887	870	
Other	2,912	3,117	3,222	3,468	3,942	4,145	4,203	4,184	4,236	
<b>OPEC</b>	<b>26,941</b>	<b>22,680</b>	<b>18,901</b>	<b>17,541</b>	<b>17,440</b>	<b>16,235</b>	<b>15,246</b>	<b>13,778</b>	<b>14,580</b>	<b>13,315</b>
Algeria	1,020	803	701	699	638	660	634	600	600	650
Ecuador	204	211	211	236	253	274	271	268	250	280
Gabon	175	151	154	157	152	150	150	150	150	150
Indonesia	1,576	1,604	1,324	1,385	1,466	1,152	1,167	850	1,050	1,050
Iran	1,662	1,381	2,282	2,492	2,187	2,097	2,299	2,200	2,400	2,500
Iraq	2,514	993	972	922	1,203	1,255	1,340	1,360	1,440	1,400
Kuwait <sup>b</sup>	1,389	947	663	881	912	914	800	800	800	800
Libya	1,830	1,137	1,183	1,076	1,073	1,051	1,057	970	900	1,000
Neutral Zone <sup>c</sup>	544	370	317	390	410	480	333	280	280	300
Nigeria	2,058	1,445	1,298	1,241	1,393	1,590	1,367	1,100	1,000	1,300
Qatar	471	405	328	295	399	292	297	300	300	300
Saudi Arabia <sup>b</sup>	9,631	9,625	6,327	4,867	4,444	3,659	2,731	2,300	2,700	2,200
UAE	1,702	1,500	1,248	1,119	1,097	1,123	1,120	1,045	1,155	1,155
Venezuela	2,165	2,108	1,893	1,781	1,813	1,538	1,680	1,555	1,555	1,385
<b>Communist countries</b>	<b>14,220</b>	<b>14,238</b>	<b>14,289</b>	<b>14,396</b>	<b>14,417</b>	<b>14,790</b>	<b>14,748</b>	<b>14,580</b>		
USSR	11,700	11,800	11,830	11,864	11,728	11,920	11,848	11,680		
China	2,113	2,024	2,044	2,120	2,280	2,450	2,480	2,480		
Other	407	414	415	412	409	420	420	420		

<sup>a</sup> Preliminary.

<sup>b</sup> Excluding Neutral Zone production, which is shown separately.

<sup>c</sup> Production is shared equally between Saudi Arabia and Kuwait.

**Big Seven: Inland Oil Consumption***Thousand b/d*

	1980	1981	1982	1983	1984	1985				
						1st Qtr	2d Qtr	Jul	Aug	Sep
United States <sup>a</sup>	17,006	16,058	15,296	15,184	15,708	15,813	15,452	15,217	16,176	15,192
Japan	4,674	4,444	4,204	4,193	4,349	4,720	3,565	3,754		
West Germany	2,356	2,120	2,024	2,009	2,012	1,993	2,034			
France	1,965	1,744	1,632	1,594	1,531	1,766	1,344	1,296	1,168	
United Kingdom	1,422	1,325	1,345	1,290	1,624	1,881	1,207			
Italy <sup>b</sup>	1,602	1,705	1,618	1,594	1,513	1,715	1,276	1,401		
Canada	1,730	1,617	1,454	1,354	1,348	1,329	1,317	1,349		

<sup>a</sup> Including bunkers, refinery fuel, and losses.<sup>b</sup> Principal products only prior to 1981.**Big Seven: Crude Oil Imports***Thousand b/d*

	1980	1981	1982	1983	1984	1985				
						1st Qtr	May	Jun	Jul	Aug
United States	5,220	4,406	3,488	3,329	3,402	2,545	3,488	3,301	3,189	2,908
Japan	4,373	3,919	3,657	3,567	3,664	3,777	3,607	2,477		
West Germany	1,953	1,591	1,451	1,307	1,335	1,419	1,235	1,313	1,168	
France	2,182	1,804	1,596	1,429	1,395	1,578	1,139	1,148	1,349	
United Kingdom	893	736	565	456	482	534	598	324	376	
Italy	1,860	1,816	1,710	1,532	1,507	1,453				
Canada	557	521	334	247	244	189	317			

**OPEC: Crude Oil Official Sales Price <sup>a</sup>***US \$ per barrel*

	1980	1981	1982	1983	1984	1985				
						1st Qtr	2d Qtr	Jul	Aug	Sep
<b>OPEC average <sup>b</sup></b>	30.87	34.50	33.63	29.31	28.70	28.25	28.11	28.00	28.04	28.14
<b>Algeria</b> 42° API 0.10% sulfur	37.59	39.58	35.79	31.30	30.50	30.15	29.50	29.50	29.50	29.50
<b>Ecuador</b> 28° API 0.93% sulfur	34.42	34.50	32.96	27.59	27.50	26.82	26.50	26.15	26.15	26.15
<b>Gabon</b> 29° API 1.26 % sulfur	31.09	34.83	34.00	29.82	29.00	28.35	28.00	28.00	28.00	28.00
<b>Indonesia</b> 35° API 0.09% sulfur	30.55	35.00	34.92	29.95	29.53	28.88	28.53	28.53	28.53	28.53
<b>Iran</b>										
Light 34° API 1.35% sulfur	34.54	36.60	31.05	28.61	28.00	28.38	28.05	28.05	28.05	28.05
Heavy 31° API 1.60% sulfur	33.60	35.57	29.15	27.44	27.10	27.41	27.35	27.35	27.35	27.35
<b>Iraq <sup>c</sup></b> 35° API 1.95% sulfur	30.30	36.66	34.86	30.32	29.43	28.78	28.43	28.43	28.43	28.43
<b>Kuwait</b> 31° API 2.50% sulfur	29.84	35.08	32.30	27.68	27.30	27.30	27.30	27.30	27.30	27.30
<b>Libya</b> 40° API 0.22% sulfur	36.07	40.08	35.69	30.91	30.40	30.40	30.40	30.40	30.40	30.40
<b>Nigeria</b> 34° API 0.16% sulfur	35.50	38.48	35.64	30.22	29.12	28.24	28.37	28.37	28.37	28.37
<b>Qatar</b> 40° API 1.17% sulfur	37.12	34.56	29.95	29.49	28.48	28.10	28.10	28.10	28.10	28.10
<b>Saudi Arabia</b>										
Berri 39° API 1.16% sulfur	30.19	34.04	34.68	29.96	29.52	28.48	28.11	28.11	28.11	28.11
Light 34° API 1.70% sulfur	28.67	32.50	34.00	29.46	29.00	28.32	28.00	28.00	28.00	28.00
Medium 31° API 2.40% sulfur	28.12	31.84	32.40	27.86	27.40	27.48	27.40	27.20	27.20	27.20
Heavy 27° API 2.85% sulfur	27.67	31.13	31.00	26.46	26.00	26.50	26.50	26.00	26.00	26.00
<b>UAE</b> 39° API 0.75% sulfur	31.57	36.42	34.74	30.38	29.56	28.52	28.15	28.15	28.15	28.15
<b>Venezuela</b> 26° API 1.52% sulfur	28.44	32.88	32.88	28.69	27.88	27.69	27.60	27.10	27.10	27.10

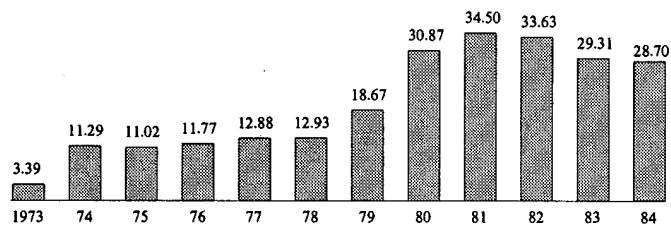
<sup>a</sup> F.o.b. prices set by the government for direct sales and, in most cases, for the producing company buy-back oil.

<sup>b</sup> Weighted by the volume of production.

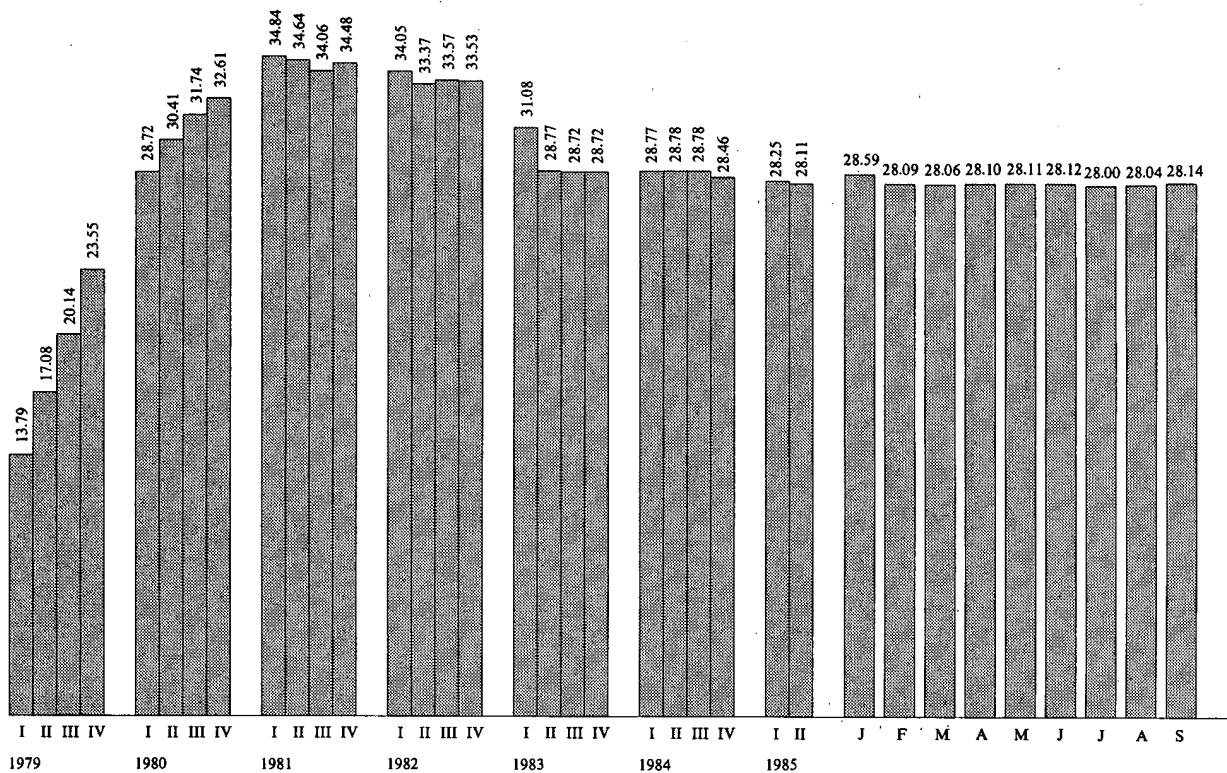
<sup>c</sup> Beginning in 1981 the price of Kirkuk (Mediterranean) is used in calculating the OPEC average official sales price.

**OPEC: Average Crude Oil Sales Price**

US \$ per barrel



Annual average



The 1973 price is derived from posted prices, not official sales prices.

**Unclassified**

307204 10-85

