

Declassified in Part - Sanitized Copy Approved for Release 2012/04/30 :
 CIA-RDP88-00206R000200130016-7

PHOTO NO.	156589	REF ID	6-1952-80	MAP REFERENCE	EXPOSURE	22	31 N	114	045
COUNTRY	Hong Kong			PROVINCE	WUC 614A				
AREA NO.	SUBJECT	SUBJECT	SUBJECT	SUBJECT	SUBJECT	SUBJECT	SUBJECT	SUBJECT	SUBJECT
	L O K	M A	C H A U	H A	K K A				
	O M E N	N R	C E N T E R	T O W N					
	N R	B O R D E R	P O	L I C E	S T A T I O N				
DATE OF PHOTO	TYPE	QUALITY	CLASS	NO. OF CARDS					
8	8								
CLASSIFICATION	CONFIDENTIAL			CAPTIONED BY					
FORM 174				PHOTO ANALYSIS REPORT					
12-79				OBSOLETE PREVIOUS EDITIONS					

25X1

Declassified in Part - Sanitized Copy Approved for Release 2012/04/30 :
 CIA-RDP88-00206R000200130016-7

Declassified in Part - Sanitized Copy Approved for Release 2012/04/30 :
CIA-RDP88-00206R000200130016-7

1569894		E-1432 83		MAP REFERENCE	22 31 N 114 04 E		LONGITUDE	
COUNTRY Hong Kong			PROVINCE New 14A					
AREA NO.	SUBJECT	SUBJECT	SUBJECT	SUBJECT	SUBJECT	SUBJECT	SUBJECT	SUBJECT
LOK	MA	CHAU	B	IG	N			
AR	B	ORDER	LOOK	OUT	S			
ATION								
8				8				
DATE OF PHOTO		TYPE	QUALITY	CLASS	NO. OF CARDS			
Sept 8 2								
CLASSIFICATION CONFIDENTIAL			CAPTIONED BY KLB					
FORM 174 12-79		OBSOLETE PREVIOUS EDITIONS		PHOTO ANALYSIS REPORT				

25X1

Declassified in Part - Sanitized Copy Approved for Release 2012/04/30 :
CIA-RDP88-00206R000200130016-7

Declassified in Part - Sanitized Copy Approved for Release 2012/04/30 :
CIA-RDP88-00206R000200130016-7

100000		16-0932-80		MAP REFERENCE	LATITUDE 22 14N		LONGITUDE 114 09E	
COUNTRY Hong Kong				PROVINCE WAC 614A				
AREA NO.	SUBJECT	SUBJECT	SUBJECT	SUBJECT	SUBJECT	SUBJECT	SUBJECT	SUBJECT
[Redacted]								
8								
7, 8								
DATE OF PHOTO		TYPE	QUALITY	CLASS	NO. OF CARDS			
Sept 80								
CLASSIFICATION CONFIDENTIAL				CAPTIONED BY [Signature]				
FORM 174		OBSOLETE PREVIOUS EDITIONS		PHOTO ANALYSIS REPORT				

25X1

25X1

Declassified in Part - Sanitized Copy Approved for Release 2012/04/30 :
CIA-RDP88-00206R000200130016-7

1568896

8-0932-80

22 12 N

113 32E

Declassified in Part - Sanitized Copy Approved for Release 2012/04/30 :

CIA-RDP88-00206R000200130016-7

SUBJECT	SUBJECT	SUBJECT	SUBJECT	SUBJECT	SUBJECT	SUBJECT
MACCADO		GOVERNMENT				
USE						

9

8

DATE OF PHOTO	TYPE	QUALITY	CLASS	NO. OF CARDS
Sept 80				

CLASSIFICATION

CONFIDENTIAL

CAPTIONED BY

LeB

FORM 12-79

174

OBSELETE PREVIOUS EDITIONS

PHOTO ANALYSIS REPORT

25X1

Declassified in Part - Sanitized Copy Approved for Release 2012/04/30 :

CIA-RDP88-00206R000200130016-7

Declassified in Part - Sanitized Copy Approved for Release 2012/04/30 :
CIA-RDP88-00206R000200130016-7

COUNTRY		PROVINCE			LATITUDE		LONGITUDE	
MACAO		XUC 614A			22 12 N		113 32 E	
AREA NO.	SUBJECT	SUBJECT	SUBJECT	SUBJECT	SUBJECT	SUBJECT	SUBJECT	SUBJECT
MACAO	5	6	10	OVERN	15	MENT	20	H
USE	25		30					
	45		50					
DATE OF PHOTO		TYPE	QUALITY	CLASS	NO. OF CARDS			
Sept 80								
CLASSIFICATION			CAPTIONED BY					
CONFIDENTIAL			LoB					
FORM 174	OBSOLETE PREVIOUS EDITIONS		PHOTO ANALYSIS REPORT					

25X1

Declassified in Part - Sanitized Copy Approved for Release 2012/04/30 :
CIA-RDP88-00206R000200130016-7

Declassified in Part - Sanitized Copy Approved for Release 2012/04/30 :
CIA-RDP88-00206R000200130016-7

COUNTRY		PROVINCE		MAP REFERENCE	LATITUDE	LONGITUDE		
MACAO		WAC 614A			22 12 N	113 32 E		
AREA NO.	SUBJECT	SUBJECT	SUBJECT	SUBJECT	SUBJECT	SUBJECT	SUBJECT	SUBJECT
MACAO		STREET		CLEAN				
R	25		30		35			
	45		50					
DATE OF PHOTO		TYPE	QUALITY	CLASS	NO. OF CARDS			
Sept 80								
CLASSIFICATION	CONFIDENTIAL			CAPTIONED BY				
				LeB				

FORM 174
12-79
OBSOLETE PREVIOUS EDITIONS

PHOTO ANALYSIS REPORT

25X1

Declassified in Part - Sanitized Copy Approved for Release 2012/04/30 :
CIA-RDP88-00206R000200130016-7

Declassified in Part - Sanitized Copy Approved for Release 2012/04/30 :

CIA-RDP88-00206R000200130016-7 - 0932--80

COUNTRY MACAO		PROVINCE MAC 614A		MAP REFERENCE		LATITUDE 22 12 N		LONGITUDE 113 39 E	
AREA NO.	SUBJECT	SUBJECT	SUBJECT	SUBJECT	SUBJECT	SUBJECT	SUBJECT	SUBJECT	SUBJECT
MACAO	MONUMENT	JORGE	ALVARO						
DATE OF PHOTO Sept 80		TYPE	QUALITY	CLASS	NO. OF CARDS	9			
CLASSIFICATION CONFIDENTIAL		CAPTIONED BY ZEB							

25X1

Declassified in Part - Sanitized Copy Approved for Release 2012/04/30 :

CIA-RDP88-00206R000200130016-7

PHOTO ANALYSIS REPORT

Declassified in Part - Sanitized Copy Approved for Release 2012/04/30 :
 CIA-RDP88-00206R000200130016-7

COUNTRY <i>MACAO</i>		PROVINCE <i>WAC 614A</i>						
AREA NO.	SUBJECT	SUBJECT	SUBJECT	SUBJECT	SUBJECT	SUBJECT	SUBJECT	SUBJECT
<i>MACAO</i>		<i>EX</i>	<i>10</i>	<i>CL</i>	<i>10</i>	<i>US</i>	<i>10</i>	<i>IVE</i>
<i>LAS</i>	<i>75</i>		<i>20</i>		<i>20</i>		<i>20</i>	<i>VIL</i>
	<i>48</i>		<i>80</i>					
<i>9</i>								
DATE OF PHOTO	TYPE	QUALITY	CLASS	NO. OF CARDS				
<i>Sept 56</i>								
CLASSIFICATION CONFIDENTIAL			CAPTIONED BY <i>Lab</i>					

25X1

FORM 12-78 174 OBSOLETE PREVIOUS EDITIONS PHOTO ANALYSIS REPORT

Declassified in Part - Sanitized Copy Approved for Release 2012/04/30 :
 CIA-RDP88-00206R000200130016-7

Declassified in Part - Sanitized Copy Approved for Release 2012/04/30 :
 CIA-RDP88-00206R000200130016-7

COUNTRY MACAO		PROVINCE MACAO		DATE 8-07-80	COORDINATES 22 12 N 113 32 E				
AREA NO.	SUBJECT	SUBJECT	SUBJECT	SUBJECT	SUBJECT	SUBJECT	SUBJECT	SUBJECT	SUBJECT
	MACAO	HARBOR	10	10	10	10	10	10	10
	CHINA	30							
	40		50						
DATE OF PHOTO 30					TYPE				
QUALITY					CLASS				
NO. OF CARDS					CLASSIFICATION CONFIDENTIAL				
CAPTIONED BY KCB									

25X1

Declassified in Part - Sanitized Copy Approved for Release 2012/04/30 :
 CIA-RDP88-00206R000200130016-7

FORM 174 OBSOLETE PREVIOUS EDITIONS PHOTO ANALYSIS REPORT

Declassified in Part - Sanitized Copy Approved for Release 2012/04/30 :
 CIA-RDP88-00206R000200130016-7

PRINTED NO.	1568907	REF NO.	6-0922-80	MAP REFERENCE		LATITUDE	22 12N	LONGITUDE	113 32E
COUNTRY	MACAO		PROVINCE	WAC 61A					
AREA	MACAO		SUBJECT	SUBJECT	SUBJECT	SUBJECT	SUBJECT	SUBJECT	SUBJECT
	MACAO		BEACH					CHINE	
	SE	BORDER	POST					(FLAG)	
	CB)	NR	BARRIER					GATE	
9									
DATE OF PHOTO	Sept 70	TYPE		QUALITY		CLASS		NO. OF CARDS	
CLASSIFICATION	CONFIDENTIAL			CAPTIONED BY					
				2/85					

25X1

Declassified in Part - Sanitized Copy Approved for Release 2012/04/30 :
 CIA-RDP88-00206R000200130016-7

Declassified in Part - Sanitized Copy Approved for Release 2012/04/30 :
 CIA-RDP88-00206R000200130016-7

156500N		5-01-2 60		MAP REFERENCE	LATITUDE		LONGITUDE	
22 12N		113 32E						
COUNTRY MACAO				PROVINCE MACAO				
AREA NO.	SUBJECT	SUBJECT	SUBJECT	SUBJECT	SUBJECT	SUBJECT	SUBJECT	SUBJECT
M A C A O		C A S I N O		T A L A V				
	25		30			35		40
	45		50					
9				10				
DATE OF PHOTO		TYPE	QUALITY	CLASS	NO. OF CARDS			
CLASSIFICATION CONFIDENTIAL				CAPTIONED BY <i>[Signature]</i>				
FORM 12-79 174		OBSOLETE PREVIOUS EDITIONS		PHOTO ANALYSIS REPORT				

25X1

Declassified in Part - Sanitized Copy Approved for Release 2012/04/30 :
 CIA-RDP88-00206R000200130016-7

Declassified in Part - Sanitized Copy Approved for Release 2012/04/30 :
 CIA-RDP88-00206R000200130016-7

PHOTO NO.	1580004	LOT NO.	G0932-80	MAP REFERENCE		LATITUDE	14 35N	LONGITUDE	121 00E
COUNTRY	PHILIPPINES			PROVINCE	735A				
AREA NO.	SUBJECT	SUBJECT	SUBJECT	SUBJECT	SUBJECT	SUBJECT	SUBJECT	SUBJECT	SUBJECT
	M A N I L A		I E R M I N A L		B U				
	L I D I N G	A T	M A N I L A		L I N T E				
	R I N A T	I O N A L	A I R		P O R T.				
DATE OF PHOTO	7-12 Sept. 80	TYPE		QUALITY		CLASS	231(C)	NO. OF CARD	309
CLASSIFICATION	CONF.	OFFICIAL USE ONLY		CAPTIONED BY		C.L.			
FORM 12-72	174	OBSOLETE PREVIOUS EDITIONS		PHOTO ANALYSIS REPORT					

STAT

Declassified in Part - Sanitized Copy Approved for Release 2012/04/30 :
 CIA-RDP88-00206R000200130016-7

Declassified in Part - Sanitized Copy Approved for Release 2012/04/30 :
 CIA-RDP88-00206R000200130016-7

PHOTO NO.	100000	ICG NO.	60932-80	MAP REFERENCE		LATITUDE	14 35N	LONGITUDE	121 00E
COUNTRY	PHILIPPINES			PROVINCE	735A				
AREA NO.	SUBJECT	SUBJECT	SUBJECT	SUBJECT	SUBJECT	SUBJECT	SUBJECT	SUBJECT	SUBJECT
	M A N I L A		V I E W		O F		P A S T		
	G R I V E R		F R O M		R O X A S				
	R I D G E								
DATE OF PHOTO	6, 29 (C)								319
	TYPE	QUALITY	CLASS	NO. OF CARDS					
7-12 Sept. 80									
CLASSIFICATION	OFFICIAL USE ONLY			CAPTIONED BY					
Conf.				C.L.					
FORM 174	OBSOLETE PREVIOUS EDITIONS			PHOTO ANALYSIS REP					

STAT

Declassified in Part - Sanitized Copy Approved for Release 2012/04/30 :
 CIA-RDP88-00206R000200130016-7

PHOTO NO. 1568900		LOT NO. G0932-80	MAP REFERENCE	LATITUDE 14 35N	LONGITUDE 121 00E
COUNTRY PHILIPPINES			PROVINCE 735A		
AREA NO.	SUBJECT	SUBJECT	SUBJECT	SUBJECT	SUBJECT
	M A N I L A		C I T Y		H A L L
			10		20
			25		30
			35		40
			45		50
DATE OF PHOTO 7-12 Sept. 8			TYPE 7,8(C)		NO. OF CARDS 327
CLASSIFICATION Conf.		OFFICIAL USE ONLY		CAPTIONED BY C.F.	
FORM 17 OBSOLETE PREVIOUS EDITIONS		PHOTO ANALYSIS REF.			

STAT

Declassified in Part - Sanitized Copy Approved for Release 2012/04/30 :
 CIA-RDP88-00206R000200130016-7

PROCESSED NO.	1560907	LOT NO.	G0932-80	MAP REFERENCE		LATITUDE	14 35N	LONGITUDE	12 00E
COUNTRY	PHILIPPINES		PROVINCE	735A					
AREA NO.	SUBJECT	SUBJECT	SUBJECT	SUBJECT	SUBJECT	SUBJECT	SUBJECT	SUBJECT	SUBJECT
	MANILA		IRAFELIC		ON				
	AFT	AVE.	AY	JAI	ALA				
	FRONTON								
DATE OF PHOTO	19, 28 (C)		TYPE	QUALITY	CLASS	NO. OF CARDS	335		
7-12 Sept. 80									
CLASSIFICATION	CONF.		OFFICIAL USE ONLY	CAPTIONED BY		C.L.			
FORM 12-72 174	OBSOLETE PREVIOUS EDITIONS		PHOTO ANALYSIS REPORT						

STAT

Declassified in Part - Sanitized Copy Approved for Release 2012/04/30 :
 CIA-RDP88-00206R000200130016-7

Declassified in Part - Sanitized Copy Approved for Release 2012/04/30 :
 CIA-RDP88-00206R000200130016-7

PHOTO NO.	1560008	REF. NO.	G 0932-80	MAP REFERENCE		LATITUDE	14 35N	LONGITUDE	12 00E
COUNTRY	PHILIPPINES			PROVINCE	735A				
AREA NO.	SUBJECT	SUBJECT	SUBJECT	SUBJECT	SUBJECT	SUBJECT	SUBJECT	SUBJECT	SUBJECT
	MANILA		PENINSULA						
	TELE	25		30			35		
		45		50					
DATE OF PHOTO					TYPE	QUALITY	CLASS	NO. OF CARDS	
7-12 Sept 80									
CLASSIFICATION					CAPTIONED BY				
Conf.					L.				
FORM 174 OBSOLETE PREVIOUS EDITIONS					PHOTO ANALYSIS REPORT				

STAT

Declassified in Part - Sanitized Copy Approved for Release 2012/04/30 :
 CIA-RDP88-00206R000200130016-7

Declassified in Part - Sanitized Copy Approved for Release 2012/04/30 :
 CIA-RDP88-00206R000200130016-7

PHOTO NO.	1568800	LOT NO.	G0932-80	MAP REFERENCE		LATITUDE	14 35N	LONGITUDE	12 00E
COUNTRY	PHILIPPINES			PROVINCE	735A				
AREA NO.	SUBJECT	SUBJECT	SUBJECT	SUBJECT	SUBJECT	SUBJECT	SUBJECT	SUBJECT	SUBJECT
	MANILA		CULTURAL						
	TER	OF	THE	PHILIPPINES					
	E.S.								
				10 (C)		348			
DATE OF PHOTO	7-12 Sept 80	TYPE		QUALITY		CLASS		NO. OF CARDS	
CLASSIFICATION	CONF.	OFFICIAL USE ONLY		CAPTIONED BY		C.L.			
FORM 12-72	174	OBSELETE PREVIOUS EDITIONS	PHOTO ANALYSIS REPORT						

STAT

Declassified in Part - Sanitized Copy Approved for Release 2012/04/30 :
 CIA-RDP88-00206R000200130016-7

Declassified in Part - Sanitized Copy Approved for Release 2012/04/30 :
 CIA-RDP88-00206R000200130016-7

PHOTO NO.	1000011	LIST NO.	G093280	MAP REFERENCE		LATITUDE	13 55N	LONGITUDE	121 00E
COUNTRY	PHILIPPINES			PROVINCE	735D				
AREA NO.	SUBJECT	SUBJECT	SUBJECT	SUBJECT	SUBJECT	SUBJECT	SUBJECT	SUBJECT	SUBJECT
	T A A L	L A K E		V I E W	O F				
	A K E	T A A L	F R O M	T A G A Y					
	A Y	R I D G E							
DATE OF PHOTO	7-12 Sept. 80	TYPE		QUALITY		CLASS	1, 2 (C)	NO. OF CARD	380
CLASSIFICATION	Conf.	OFFICIAL USE ONLY			CAPTIONED BY		C. L.		
FORM 12-72	174	OBSOLETE PREVIOUS EDITIONS		PHOTO ANALYSIS REF.					

STAT

Declassified in Part - Sanitized Copy Approved for Release 2012/04/30 :
 CIA-RDP88-00206R000200130016-7

Declassified in Part - Sanitized Copy Approved for Release 2012/04/30 :
 CIA-RDP88-00206R000200130016-7

PHOTO NO.	1563917	LOT NO.	G0932-80	MAP REFERENCE		LATITUDE	10 18N	LONGITUDE	123 58E
COUNTRY	PHILIPPINES			PROVINCE	742A				
AREA NO.	SUBJECT	SUBJECT	SUBJECT	SUBJECT	SUBJECT	SUBJECT	SUBJECT	SUBJECT	SUBJECT
	MACTAN	ISLAND	BRIDGE	CONNECTING	MACTAN	ISLAND	WITH	CEBU	CITY
DATE OF PHOTO	TYPE	QUALITY	CLASS	NO. OF CARDS					
10-11 Sept. 80									
CLASSIFICATION	OFFICIAL USE ONLY			CAPTIONED BY					
Conf.				CL					
FORM 174	OBsolete PREVIOUS EDITIONS	PHOTO ANALYSIS REPORT							

STAT

Declassified in Part - Sanitized Copy Approved for Release 2012/04/30 :
 CIA-RDP88-00206R000200130016-7

Declassified in Part - Sanitized Copy Approved for Release 2012/04/30 :
 CIA-RDP88-00206R000200130016-7

PHOTO NO.	1569918	LOT NO.	G-0932-80	MAP REFERENCE		LATITUDE	10	LONGITUDE	18N 123.54E
COUNTRY	PHILIPPINES			PROVINCE	742A				
AREA NO.	SUBJECT	SUBJECT	SUBJECT	SUBJECT	SUBJECT	SUBJECT	SUBJECT	SUBJECT	SUBJECT
	CERU	CITY		CITY		H.A.L.			
	5	10		15		20		25	
	25	30		35		40		45	
	45	50							

DATE OF PHOTO	TYPE	QUALITY	CLASS	NO. OF CARDS
10-11 Sept. 80				
CLASSIFICATION	OFFICIAL USE ONLY		CAPTIONED BY	
Conf.			CZ	
FORM 174	PHOTO ANALYSIS REPORT			
12-72	OBSOLETE PREVIOUS EDITIONS			

STAT

Declassified in Part - Sanitized Copy Approved for Release 2012/04/30 :
 CIA-RDP88-00206R000200130016-7

Declassified in Part - Sanitized Copy Approved for Release 2012/04/30 :
 CIA-RDP88-00206R000200130016-7

PHOTO NO.	1569919	MAP REFERENCE	G-0932-80	LATITUDE	10	LONGITUDE	18N 123 54E
COUNTRY	PHILIPPINES		PROVINCE	742A			
AREA NO.	SUBJECT	SUBJECT	SUBJECT	SUBJECT	SUBJECT	SUBJECT	SUBJECT
	5	10	15	20	25	30	35
	40	45	50	55	60	65	70
	75	80	85	90	95	100	105
	110	115	120	125	130	135	140
	145	150	155	160	165	170	175
	180	185	190	195	200	205	210
	215	220	225	230	235	240	245
	250	255	260	265	270	275	280
	285	290	295	300	305	310	315
	320	325	330	335	340	345	350
	355	360	365	370	375	380	385
	390	395	400	405	410	415	420
	425	430	435	440	445	450	455
	460	465	470	475	480	485	490
	495	500	505	510	515	520	525
	530	535	540	545	550	555	560
	565	570	575	580	585	590	595
	600	605	610	615	620	625	630
	635	640	645	650	655	660	665
	670	675	680	685	690	695	700
	705	710	715	720	725	730	735
	740	745	750	755	760	765	770
	775	780	785	790	795	800	805
	810	815	820	825	830	835	840
	845	850	855	860	865	870	875
	880	885	890	895	900	905	910
	915	920	925	930	935	940	945
	950	955	960	965	970	975	980
	985	990	995	1000			
DATE OF PHOTO	TYPE	QUALITY	CLASS	NO. OF CARDS			
11-12 Sept. 80							
CLASSIFICATION	OFFICIAL USE ONLY		CAPTIONED BY	EZ			
FORM 174 OBSOLETE PREVIOUS EDITIONS	PHOTO ANALYSIS REPORT						

STAT

Declassified in Part - Sanitized Copy Approved for Release 2012/04/30 :
 CIA-RDP88-00206R000200130016-7

Declassified in Part - Sanitized Copy Approved for Release 2012/04/30 :
CIA-RDP88-00206R000200130016-7

25X1

Page Denied

Next 27 Page(s) In Document Denied

25X1
25X1

Declassified in Part - Sanitized Copy Approved for Release 2012/04/30 :
CIA-RDP88-00206R000200130016-7

Declassified in Part - Sanitized Copy Approved for Release 2012/04/30 :
CIA-RDP88-00206R000200130016-7

PHOTO NO.	1569348	LOT NO.	G1082-80	MAP REFERENCE		LATITUDE	16	305	LONGITUDE	068	09W
COUNTRY	BOLIVIA			PROVINCE	1194B						
AREA NO.	SUBJECT	SUBJECT	SUBJECT	SUBJECT	SUBJECT	SUBJECT	SUBJECT	SUBJECT	SUBJECT	SUBJECT	
DATE OF PHOTO		TYPE	QUALITY	CLASS	NO. OF CAR						
Nov. 80											
CLASSIFICATION				OFFICIAL USE ONLY		CAPTIONED BY C.F.					
FORM 12-72 174		OBSOLETE PREVIOUS EDITIONS		PHOTO ANALYSIS RE.							

STAT

STAT

Declassified in Part - Sanitized Copy Approved for Release 2012/04/30 :
CIA-RDP88-00206R000200130016-7

Declassified in Part - Sanitized Copy Approved for Release 2012/04/30 :
CIA-RDP88-00206R000200130016-7

PHOTO NO.	1500000	LOG NO.	G-1082-80	MAP REFERENCE		LATITUDE	16 30.5	LONGITUDE	068 09W
COUNTRY	BOLIVIA			PROVINCE	1144B				
AREA NO.	SUBJECT	SUBJECT	SUBJECT	SUBJECT	SUBJECT	SUBJECT	SUBJECT	SUBJECT	
DATE OF PHOTO	TYPE	QUALITY	CLASS.	NO. OF CARDS					
Nov	78								
CLASSIFICATION	OFFICIAL USE ONLY			CAPTIONED BY					
				Ed-					

FORM 174 OBSOLETE PREVIOUS EDITIONS

PHOTO ANALYSIS REPORT

STAT

STAT

Declassified in Part - Sanitized Copy Approved for Release 2012/04/30 :
CIA-RDP88-00206R000200130016-7

Declassified in Part - Sanitized Copy Approved for Release 2012/04/30 :
CIA-RDP88-00206R000200130016-7

PHOTO NO.	1588900	LOX NO.	G-7082-80	MAP REFERENCE		LATITUDE	16 30.5	LONGITUDE	068 09W
COUNTRY	BOLIVIA		PROVINCE	1144B					
AREA NO.	SUBJECT	SUBJECT	SUBJECT	SUBJECT	SUBJECT	SUBJECT	SUBJECT	SUBJECT	
DATE OF PHOTO	TYPE		QUALITY	CLASS	NO. OF C				
Nov. 78									
CLASSIFICATION	OFFICIAL USE ONLY			CAPTIONED BY					
				C. L.					
FORM 174	OBSOLETE PREVIOUS EDITIONS		PHOTO ANALYSIS REPORT						

STAT

STAT

Declassified in Part - Sanitized Copy Approved for Release 2012/04/30 :
CIA-RDP88-00206R000200130016-7

Declassified in Part - Sanitized Copy Approved for Release 2012/04/30 :
CIA-RDP88-00206R000200130016-7

PHOTO NO.	1569951	LOT NO.	G-1082-80	MAP REFERENCE		LATITUDE	16 305	LONGITUDE	068 09W
COUNTRY	BOLIVIA			PROVINCE	1194B				
AREA NO.	SUBJECT	SUBJECT	SUBJECT	SUBJECT	SUBJECT	SUBJECT	SUBJECT	SUBJECT	
DATE OF PHOTO	TYPE	QUALITY	CLASS	NO. OF CARDS					
Nov. 78									
CLASSIFICATION	OFFICIAL USE ONLY			CAPTIONED BY	G.L.				
FORM 174 12-72	OBSOLETE PREVIOUS EDITIONS			PHOTO ANALYSIS REPORT					

STAT

STAT

Declassified in Part - Sanitized Copy Approved for Release 2012/04/30 :
CIA-RDP88-00206R000200130016-7

Declassified in Part - Sanitized Copy Approved for Release 2012/04/30 :
CIA-RDP88-00206R000200130016-7

IRIS NO.	1560	IRIS NO.	610630	MAP REFERENCE		LATITUDE	12 07N	LONGITUDE	076 17W
COUNTRY	NICARAGUA		PROVINCE	7100					
AREA NO.	SUBJECT	SUBJECT	SUBJECT	SUBJECT	SUBJECT	SUBJECT	SUBJECT	SUBJECT	
DATE OF PHOTO	TYPE	QUALITY	CLASS	NO. OF CARDS					
26 March 79									
CLASSIFICATION	OFFICIAL USE ONLY			CAPTIONED BY	C.L.				
FORM 12-72 174	OBsolete PREVIOUS EDITIONS	PHOTO ANALYSIS REPO							

STAT

STAT

Declassified in Part - Sanitized Copy Approved for Release 2012/04/30 :
CIA-RDP88-00206R000200130016-7

Declassified in Part - Sanitized Copy Approved for Release 2012/04/30 :
 CIA-RDP88-00206R000200130016-7

PHOTO NO. 150000		REF ID G-1072-00		MAP REFERENCE		LATITUDE 12 04N		LONGITUDE 86 47W	
COUNTRY NICARAGUA					PROVINCE 710C				
AREA NO	SUBJECT	SUBJECT	SUBJECT	SUBJECT	SUBJECT	SUBJECT	SUBJECT	SUBJECT	SUBJECT
DATE OF PHOTO		TYPE	QUALITY	CLASS	NO. OF CARDS				
26 March 79					2, 8				
CLASSIFICATION				OFFICIAL USE ONLY			CAPTIONED BY: [Signature]		
FORM 174 OBSOLETE PREVIOUS EDITIONS									
PHOTO ANALYSIS REPORT									

STAT

STAT

Declassified in Part - Sanitized Copy Approved for Release 2012/04/30 :
 CIA-RDP88-00206R000200130016-7

Declassified in Part - Sanitized Copy Approved for Release 2012/04/30 :
 CIA-RDP88-00206R000200130016-7

PHOTO NO.	1560055	LOT NO.	G-1082-80	MAP REFERENCE		LATITUDE	12 09N	LONGITUDE	086 17W
COUNTRY	NICARAGUA		PROVINCE	710 C					
AREA NO.	SUBJECT	SUBJECT	SUBJECT	SUBJECT	SUBJECT	SUBJECT	SUBJECT	SUBJECT	SUBJECT
7, 8									
DATE OF PHOTO	TYPE	QUALITY	CLASS	NO. OF CARDS					
26 March 79									
CLASSIFICATION	OFFICIAL USE ONLY			CAPTIONED BY					
				CZ.					
FORM 174 OBSOLETE PREVIOUS EDITIONS				PHOTO ANALYSIS REPORT					

STAT

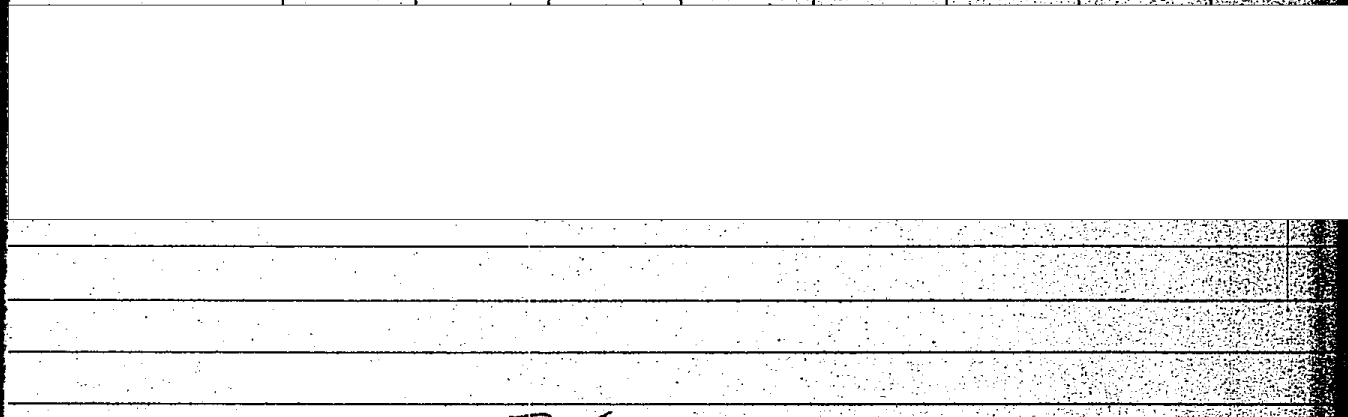
STAT

Declassified in Part - Sanitized Copy Approved for Release 2012/04/30 :
 CIA-RDP88-00206R000200130016-7

Declassified in Part - Sanitized Copy Approved for Release 2012/04/30 :
 CIA-RDP88-00206R000200130016-7

MAP REFERENCE	1000000	SCALE	G1082-80	MAP REFERENCE		LATITUDE	12	LONGITUDE	09N 086 17W
COUNTRY	NICARAGUA			PROVINCE	710C				
AREA NO	SUBJECT	SUBJECT	SUBJECT	SUBJECT	SUBJECT	SUBJECT	SUBJECT	SUBJECT	SUBJECT

STAT



DATE OF PHOTO		TYPE		QUALITY	CLASS	NO. OF CARDS
Aug. 79						
CLASSIFICATION				CAPTIONED BY		
OFFICIAL USE ONLY				CL		

STAT

FORM 174 OBSOLETE PREVIOUS EDITIONS PHOTO ANALYSIS REPORT

Declassified in Part - Sanitized Copy Approved for Release 2012/04/30 :
 CIA-RDP88-00206R000200130016-7

Declassified in Part - Sanitized Copy Approved for Release 2012/04/30 :
CIA-RDP88-00206R000200130016-7

IDENTIFICATION	1503051	ICELAND	6-1082-80	MAP REFERENCE		LATITUDE	12	LONGITUDE	09N 086 17W
COUNTRY	NICARAGUA			PROVINCE	710 C				
AREA NO.	SUBJECT	SUBJECT	SUBJECT	SUBJECT	SUBJECT	SUBJECT	SUBJECT	SUBJECT	SUBJECT
7.8									
DATE OF PHOTO	TYPE	QUALITY	CLASS	NO. OF CARDS					
Aug. 79									
CLASSIFICATION	OFFICIAL USE			CAPTIONED BY					
				C.L.					

STAT

STAT

FORM 174 OBSOLETE PREVIOUS EDITIONS
12-72-174 ONLY PHOTO ANALYSIS REPORT

Declassified in Part - Sanitized Copy Approved for Release 2012/04/30 :
CIA-RDP88-00206R000200130016-7

Declassified in Part - Sanitized Copy Approved for Release 2012/04/30 :
CIA-RDP88-00206R000200130016-7

FRAME NO.	1560008	LOT NO.	G1082-80	MAP REFERENCE		LATITUDE	12 09N	LONGITUDE	086 17W
COUNTRY	NICARAGUA			PROVINCE	710 C				
AREA NO.	SUBJECT	SUBJECT	SUBJECT	SUBJECT	SUBJECT	SUBJECT	SUBJECT	SUBJECT	SUBJECT
DATE OF PHOTO	TYPE	QUALITY	CLASS	NO. OF CARDS					
Aug. 79									
CLASSIFICATION	OFFICIAL USE ONLY			CAPTIONED BY	C.L.				
FORM 12-72 174 OBSOLETE PREVIOUS EDITIONS	PHOTO ANALYSIS REPORT								

STAT

STAT

Declassified in Part - Sanitized Copy Approved for Release 2012/04/30 :
CIA-RDP88-00206R000200130016-7

Declassified in Part - Sanitized Copy Approved for Release 2012/04/30 :
CIA-RDP88-00206R000200130016-7

PHOTO NO.	2000001	LOT NO.	G1082-80	MAP REFERENCE		LATITUDE	12 09N	LONGITUDE	086 17W										
COUNTRY	NICARAGUA			PROVINCE	710 C														
AREA NO.	SUBJECT	SUBJECT	SUBJECT	SUBJECT	SUBJECT	SUBJECT	SUBJECT	SUBJECT	SUBJECT										
[REDACTED]																			
										[REDACTED]									
										[REDACTED]									
										[REDACTED]									
DATE OF PHOTO	7/8	TYPE		QUALITY		CLASS		NO. OF CARDS											
CLASSIFICATION	OFFICIAL USE ONLY			CAPTIONED BY		[REDACTED]													
FORM 174 OBSOLETE PREVIOUS EDITIONS PHOTO ANALYSIS REPORT																			

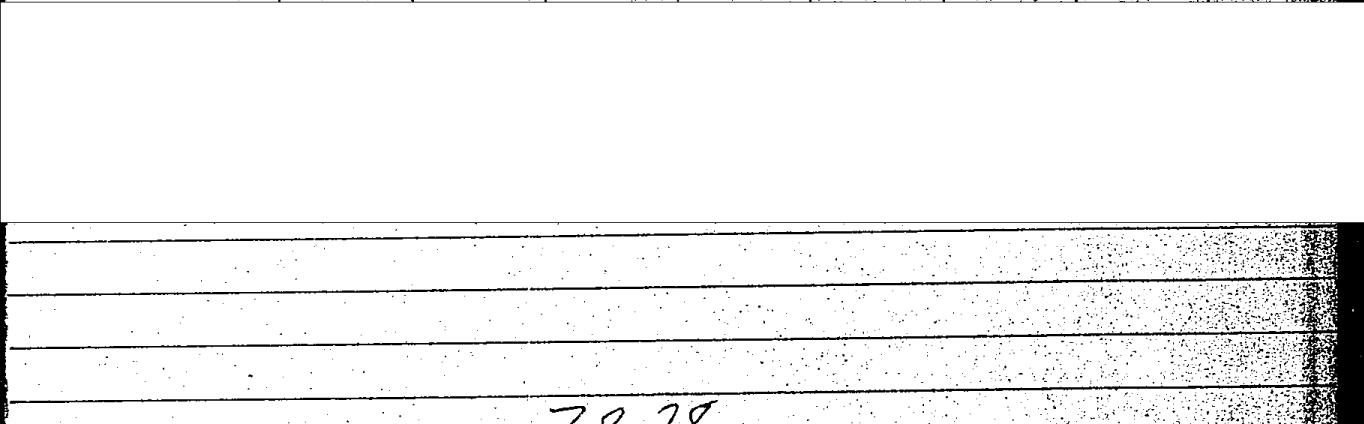
STAT

STAT

Declassified in Part - Sanitized Copy Approved for Release 2012/04/30 :
CIA-RDP88-00206R000200130016-7

Declassified in Part - Sanitized Copy Approved for Release 2012/04/30 :
CIA-RDP88-00206R000200130016-7

PHOTO NO.	1560000	LOT NO.	G1082-80	MAP REFERENCE		LATITUDE	12	LONGITUDE	09N 086 17W
COUNTRY	NICARAGUA			PROVINCE	710 C				
AREA NO	SUBJECT	SUBJECT	SUBJECT	SUBJECT	SUBJECT	SUBJECT	SUBJECT	SUBJECT	SUBJECT



DATE OF PHOTO		TYPE	QUALITY	CLASS	NO. OF CARDS
Aug.	79				
OFFICIAL USE ONLY			CAPTIONED BY		
ONLY			G.L.		
FORM 174 OBSOLETE PREVIOUS EDITIONS			PHOTO ANALYSIS REPORT		

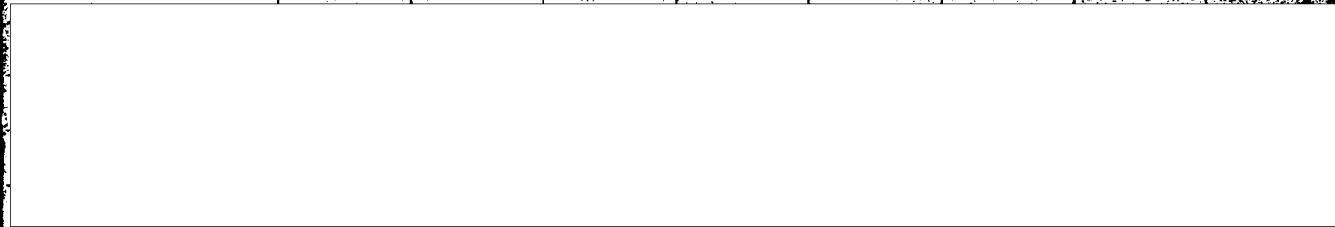
STAT

STAT

Declassified in Part - Sanitized Copy Approved for Release 2012/04/30 :
CIA-RDP88-00206R000200130016-7

Declassified in Part - Sanitized Copy Approved for Release 2012/04/30 :
CIA-RDP88-00206R000200130016-7

PHOTO NO.	1569964	LOT NO.	G1082-80	MAP REFERENCE		LATITUDE	12 09N	LONGITUDE	086 17W	
COUNTRY	NICARAGUA		PROVINCE	710 C						
AREA NO	SUBJECT	SUBJECT	SUBJECT	SUBJECT	SUBJECT	SUBJECT	SUBJECT	SUBJECT	SUBJECT	



DATE OF PHOTO	78	TYPE	QUALITY	CLASS	NO. OF CARB	[Redacted]
CLASSIFICATION	79	OFFICIAL USE ONLY		CAPTIONED BY	CX	

FORM 174 OBSOLETE PREVIOUS EDITIONS PHOTO ANALYSIS REPORT

Declassified in Part - Sanitized Copy Approved for Release 2012/04/30 :
CIA-RDP88-00206R000200130016-7

Declassified in Part - Sanitized Copy Approved for Release 2012/04/30 :
CIA-RDP88-00206R000200130016-7

SERIAL NO.	1569972	REF ID	6-1082-80	MAP REFERENCE		LATITUDE	25 53N	LONGITUDE	097 30W
COUNTRY	MEXICO			PROVINCE	5220				
AREA NO	SUBJECT	SUBJECT	SUBJECT	SUBJECT	SUBJECT	SUBJECT	SUBJECT	SUBJECT	SUBJECT
DATE OF PHOTO	TYPE	QUALITY	CLASS	NO. OF CARDS					
Sept. 76									
CLASSIFICATION	OFFICIAL USE ONLY			CAPTIONED BY	CZ				
FORM 174 12-72	OBsolete EDITIONS	PHOTO ANALYSIS REPORT							

STAT

STAT

Declassified in Part - Sanitized Copy Approved for Release 2012/04/30 :
CIA-RDP88-00206R000200130016-7

Declassified in Part - Sanitized Copy Approved for Release 2012/04/30 : CIA-RDP88-00206R000200130016-7

PHOTO NO.	1569973	LOT NO.	6-1072-60	MAP REFERENCE		LATITUDE	25 53 N	LONGITUDE	097 30 W
COUNTRY	MEXICO		PROVINCE	5220					
AREA NO.	SUBJECT	SUBJECT	SUBJECT	SUBJECT	SUBJECT	SUBJECT	SUBJECT	SUBJECT	SUBJECT
	M A T A	M O R O S		L K G		S O U T			
	T O	N O R T	A T	U S	C O N S				
	L A T E	O F F I C E		B L D G		O N			
	2 3 2	A V E.		P R I M E R A.					
78									
DATE OF PHOTO		TYPE	QUALITY	CLASS	NO. OF CARDS				
Sept. 76									
CLASSIFICATION				OFFICIAL USE ONLY		CAPTIONED BY			
						C. L.			
FORM 174 OBSOLETE PREVIOUS EDITIONS					PHOTO ANALYSIS REPORT				

STAT

Declassified in Part - Sanitized Copy Approved for Release 2012/04/30 : CIA-RDP88-00206R000200130016-7

Declassified in Part - Sanitized Copy Approved for Release 2012/04/30 :
CIA-RDP88-00206R000200130016-7

PHOTO NO.	1569974	LOT NO.	G1082-80	MAP REFERENCE		LATITUDE	25 53N	LONGITUDE	097 30W
COUNTRY	MEXICO			PROVINCE	5220				
AREA NO	SUBJECT	SUBJECT	SUBJECT	SUBJECT	SUBJECT	SUBJECT	SUBJECT	SUBJECT	SUBJECT
DATE OF PHOTO		TYPE	QUALITY	CLASS	NO. OF CARDS				
Oct. 76									
CLASSIFICATION	OFFICIAL USE			CAPTIONED BY C.F.					
FORM 174 OBSOLETE PREVIOUS EDITIONS									
ONLY PHOTO ANALYSIS REPORT									

STAT

STAT

Declassified in Part - Sanitized Copy Approved for Release 2012/04/30 :
CIA-RDP88-00206R000200130016-7

Declassified in Part - Sanitized Copy Approved for Release 2012/04/30 :
CIA-RDP88-00206R000200130016-7

PROJECT NO.	1569975	LOT NO.	G1032-80	MAP REFERENCE		LATITUDE	25 53N	LONGITUDE	097 30W
COUNTRY	MEXICO	PROVINCE	5220						
AREA NO.	SUBJECT	SUBJECT	SUBJECT	SUBJECT	SUBJECT	SUBJECT	SUBJECT	SUBJECT	SUBJECT
7, 8									
DATE OF PHOTO		TYPE	QUALITY	CLASS	NO. OF CARDS				
Oct 76									
CLASSIFICATION		OFFICIAL USE ONLY		CAPTIONED BY					
				C. L.					
FORM 12-72 174 OBSOLETE PREVIOUS EDITIONS		PHOTO ANALYSIS REPORT						GPO	

STAT

STAT

Declassified in Part - Sanitized Copy Approved for Release 2012/04/30 :
CIA-RDP88-00206R000200130016-7

Declassified in Part - Sanitized Copy Approved for Release 2012/04/30 :
CIA-RDP88-00206R000200130016-7

PHOTO NO	1569976	LOT NO	G1082-80	MAP REFERENCE		LATITUDE	25 53N	LONGITUDE	097 30W
COUNTRY	MEXICO			PROVINCE	522C				
AREA NO	SUBJECT	SUBJECT	SUBJECT	SUBJECT	SUBJECT	SUBJECT	SUBJECT	SUBJECT	SUBJECT
DATE OF PHOTO		TYPE	QUALITY	CLASS	NO. OF CARDS				
Oct. 76									
CLASSIFICATION			OFFICIAL USE ONLY		CAPTIONED BY: <i>CL</i>				
FORM 12-72 174		OBSOLETE PREVIOUS EDITIONS		PHOTO ANALYSIS REPORT					

STAT

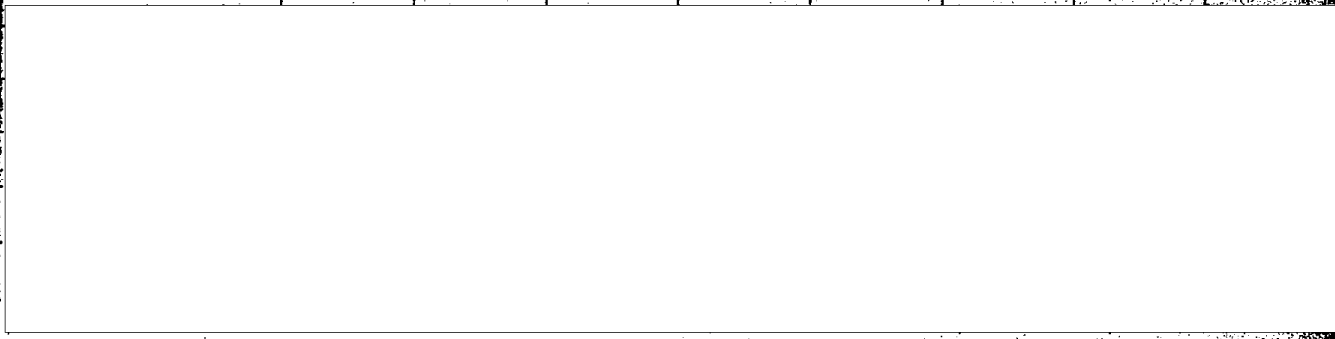
STAT

Declassified in Part - Sanitized Copy Approved for Release 2012/04/30 :
CIA-RDP88-00206R000200130016-7

Declassified in Part - Sanitized Copy Approved for Release 2012/04/30 :
CIA-RDP88-00206R000200130016-7

IDENTIFIER	1569977	101 (2)	G1082-80	MAP REFERENCE	LATITUDE	25 13N	LONGITUDE	106 25W
COUNTRY	MEXICO			PROVINCE	590A			

AREA NO	SUBJECT	SUBJECT	SUBJECT	SUBJECT	SUBJECT	SUBJECT	SUBJECT	SUBJECT
---------	---------	---------	---------	---------	---------	---------	---------	---------



DATE OF PHOTO	TYPE	QUALITY	CLASS	NO. OF CARDS
March 7 7				
CLASSIFICATION	OFFICIAL USE ONLY			CAPTIONED BY
				C.L.

FORM 174 OBSOLETE PREVIOUS EDITIONS PHOTO ANALYSIS REPORT

STAT

STAT

Declassified in Part - Sanitized Copy Approved for Release 2012/04/30 :
CIA-RDP88-00206R000200130016-7

Declassified in Part - Sanitized Copy Approved for Release 2012/04/30 :
CIA-RDP88-00206R000200130016-7

PHOTO NO.	1569978	LOT NO.	G1082-80	MAP REFERENCE		LATITUDE	23	13N	106	25W	LONGITUDE
COUNTRY	MEXICO			PROVINCE	590A						
AREA NO.	SUBJECT	SUBJECT	SUBJECT	SUBJECT	SUBJECT	SUBJECT	SUBJECT	SUBJECT	SUBJECT	SUBJECT	
DATE OF PHOTO	March 7 7		TYPE	QUALITY	CLASS	NO. OF CARDS					
CLASSIFICATION	OFFICIAL USE ONLY			CAPTIONED BY		CL					
FORM 174	OBSOLETE PREVIOUS EDITIONS		12-72				PHOTO ANALYSIS REPORT				

STAT

STAT

Declassified in Part - Sanitized Copy Approved for Release 2012/04/30 :
CIA-RDP88-00206R000200130016-7

Declassified in Part - Sanitized Copy Approved for Release 2012/04/30 :
CIA-RDP88-00206R000200130016-7

PHOTO NO.	1569979	LOT NO.	G1042-40	MAP REFERENCE		LATITUDE	23	13 N	LONGITUDE	106	25 W
COUNTRY	MEXICO			PROVINCE	590A						
AREA NO.	SUBJECT	SUBJECT	SUBJECT	SUBJECT	SUBJECT	SUBJECT	SUBJECT	SUBJECT	SUBJECT	SUBJECT	
[Redacted]											
DATE OF PHOTO			TYPE	QUALITY	CLASS	NO. OF CARDS					
March 77							[Redacted]				
CLASSIFICATION	OFFICIAL USE ONLY			CAPTIONED BY		[Signature]					
FORM 12-72 174	OBSELETE PREVIOUS EDITIONS		PHOTO ANALYSIS REPORT					[Redacted]			

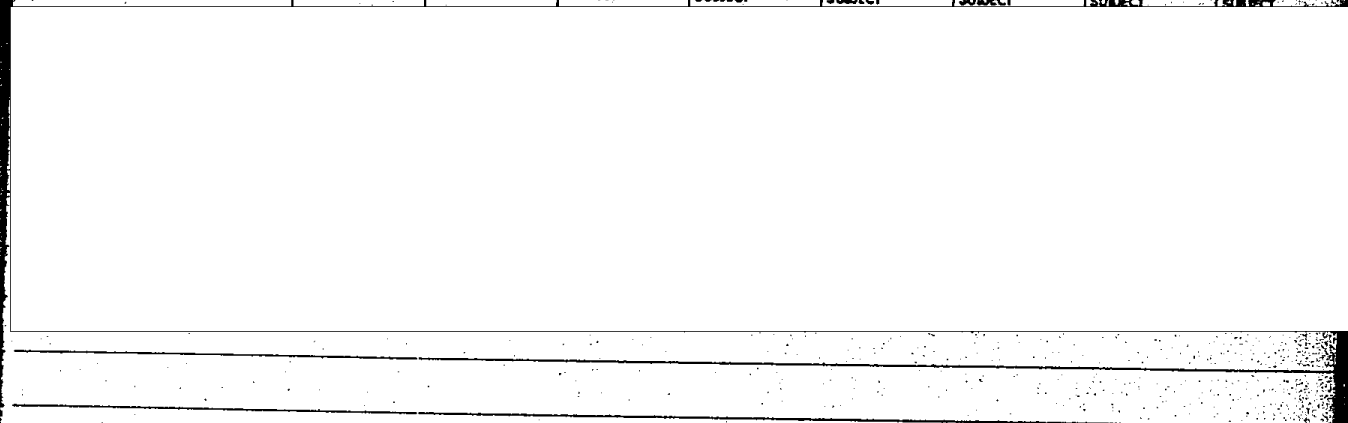
STAT

STAT

Declassified in Part - Sanitized Copy Approved for Release 2012/04/30 :
CIA-RDP88-00206R000200130016-7

Declassified in Part - Sanitized Copy Approved for Release 2012/04/30 :
CIA-RDP88-00206R000200130016-7

PHOTO NO.	1569980	TEST NO.	G1082-80	MAP REFERENCE		LATITUDE	23 13N	LONGITUDE	106 25W
COUNTRY	MEXICO	PROVINCE	590A						
AREA NO.	SUBJECT	SUBJECT	SUBJECT	SUBJECT	SUBJECT	SUBJECT	SUBJECT	SUBJECT	SUBJECT



DATE OF PHOTO	7, 8, 28		TYPE	QUALITY	CLASS	NO. OF CARDS	
CLASSIFICATION	7.7						
OFFICIAL USE ONLY			CAPTIONED BY: <i>CL</i>				

FORM 174 OBSOLETE PREVIOUS EDITIONS 12-72 PHOTO ANALYSIS REPORT GPO 411-302

Declassified in Part - Sanitized Copy Approved for Release 2012/04/30 :
CIA-RDP88-00206R000200130016-7

Declassified in Part - Sanitized Copy Approved for Release 2012/04/30 :
CIA-RDP88-00206R000200130016-7

PHOTO NO.	1569981	LOT NO.	G-1072-80	MAP REFERENCE		LATITUDE	14 36 N	LONGITUDE	061 05 W
COUNTRY	MARTINIQUE	PROVINCE	705A						
AREA NO.	SUBJECT	SUBJECT	SUBJECT	SUBJECT	SUBJECT	SUBJECT	SUBJECT	SUBJECT	SUBJECT

STAT

DATE OF PHOTO	7 8	TYPE		QUALITY		CLASS	6, 7, 8	NO. OF CARD	
CLASSIFICATION	OFFICIAL USE ONLY			CAPTIONED BY		C. Z.			

STAT

FORM 12-72 174 OBSOLETE PREVIOUS EDITIONS PHOTO ANALYSIS REPORT

Declassified in Part - Sanitized Copy Approved for Release 2012/04/30 :
CIA-RDP88-00206R000200130016-7

Declassified in Part - Sanitized Copy Approved for Release 2012/04/30 :
CIA-RDP88-00206R000200130016-7

PLANS NO	1569982	FILE NO	G 1082-80	AKAP REFERENCE		LATITUDE		14	36 N	LONGITUDE		061	05 W
COUNTRY	MARTINIQUE		PROVINCE	70 SA									
AREA NO	SUBJECT	SUBJECT	SUBJECT	SUBJECT	SUBJECT	SUBJECT	SUBJECT	SUBJECT	SUBJECT	SUBJECT	SUBJECT	SUBJECT	SUBJECT
DATE OF PHOTO				TYPE	QUALITY	CLASS	NO. OF CARDS						
7 8													
CLASSIFICATION							OFFICIAL USE ONLY						
							CAPTIONED BY C.Z.						
FORM 12-72 174 OBSOLETE PREVIOUS EDITIONS													

STAT

STAT

Declassified in Part - Sanitized Copy Approved for Release 2012/04/30 :
CIA-RDP88-00206R000200130016-7

Declassified in Part - Sanitized Copy Approved for Release 2012/04/30 :
CIA-RDP88-00206R000200130016-7

PHOTO NO.	1169983	LOT NO.	G-1082-80	MAP REFERENCE		LATITUDE	14 36N	LONGITUDE	061 05W
COUNTRY	MARTINIQUE			PROVINCE	705A				
AREA NO	SUBJECT	SUBJECT	SUBJECT	SUBJECT	SUBJECT	SUBJECT	SUBJECT	SUBJECT	SUBJECT
DATE OF PHOTO	TYPE	QUALITY	7, 8		CLASS				
7 8									
CLASSIFICATION				OFFICIAL USE ONLY		CAPTIONED BY		C.L.	
FORM 174 OBSOLETE PREVIOUS EDITIONS									
PHOTO ANALYSIS REPORT									

STAT

STAT

Declassified in Part - Sanitized Copy Approved for Release 2012/04/30 :
CIA-RDP88-00206R000200130016-7

Declassified in Part - Sanitized Copy Approved for Release 2012/04/30 :
CIA-RDP88-00206R000200130016-7

IDENTIFIER	1569384	REG. NO.	G-1082-80	MAP REFERENCE		LATITUDE	14 36N	LONGITUDE	061 05W
COUNTRY	MARTINIQUE			PROVINCE	705A				
AREA NO	SUBJECT	SUBJECT	SUBJECT	SUBJECT	SUBJECT	SUBJECT	SUBJECT	SUBJECT	
DATE OF PHOTO		TYPE	QUALITY	CLASS	NO. OF CARDS				
7 8									
CLASSIFICATION			OFFICIAL USE		CAPTIONED BY C.F.				
FORM 174 OBSOLETE PREVIOUS EDITIONS						PHOTO ANALYSIS REPO.			

STAT

STAT

Declassified in Part - Sanitized Copy Approved for Release 2012/04/30 :
CIA-RDP88-00206R000200130016-7

Declassified in Part - Sanitized Copy Approved for Release 2012/04/30 :
CIA-RDP88-00206R000200130016-7

PHOTO NO.	1569985	LOT NO.	G1082-80	MAP REFERENCE		LATITUDE	14 36 N	LONGITUDE	061 05 W
COUNTRY	MARTINIQUE		PROVINCE	705A					
AREA NO.	SUBJECT	SUBJECT	SUBJECT	SUBJECT	SUBJECT	SUBJECT	SUBJECT	SUBJECT	SUBJECT
DATE OF PHOTO	TYPE	QUALITY	CLASS	NO. OF CARDS					
	7 8								
CLASSIFICATION	OFFICIAL USE ONLY			CAPTIONED BY					
FORM 12-72 174	OBsolete PREVIOUS EDITIONS	PHOTO ANALYSIS REPORT							

STAT

STAT

Declassified in Part - Sanitized Copy Approved for Release 2012/04/30 :
CIA-RDP88-00206R000200130016-7

Declassified in Part - Sanitized Copy Approved for Release 2012/04/30 : CIA-RDP88-00206R000200130016-7

PHOTO NO.	1569986	LOT NO.	G1082-80	MAP REFERENCE		LATITUDE	10 40N	LONGITUDE	071 37W
COUNTRY	VENEZUELA			PROVINCE 770B					
AREA NO	SUBJECT	SUBJECT	SUBJECT	SUBJECT	SUBJECT	SUBJECT	SUBJECT	SUBJECT	SUBJECT
DATE OF PHOTO	2.8.23	TYPE		QUALITY		CLASS		NO. OF CARDS	
CLASSIFICATION	Sept. 76	OFFICIAL USE ONLY				CAPTIONED BY CZ-			
FORM 12-72 174 OBSOLETE PREVIOUS EDITIONS PHOTO ANALYSIS REPORT									

STAT

STAT

STAT

Declassified in Part - Sanitized Copy Approved for Release 2012/04/30 : CIA-RDP88-00206R000200130016-7

Declassified in Part - Sanitized Copy Approved for Release 2012/04/30 :
CIA-RDP88-00206R000200130016-7

PHOTO NO.	1569987	LOT NO.	G-1082-10	MAP REFERENCE		LATITUDE	10 40N	LONGITUDE	071 37W
COUNTRY	VENEZUELA			PROVINCE	770R				
AREA NO.	SUBJECT	SUBJECT	SUBJECT	SUBJECT	SUBJECT	SUBJECT	SUBJECT	SUBJECT	SUBJECT
DATE OF PHOTO	TYPE	QUALITY	CLASS	NO. OF CARDS					
Sept. 76									
CLASSIFICATION	OFFICIAL USE ONLY			CAPTIONED BY	CZ				
FORM 174 OBSOLETE PREVIOUS EDITIONS	PHOTO ANALYSIS REPORT								

STAT

STAT

Declassified in Part - Sanitized Copy Approved for Release 2012/04/30 :
CIA-RDP88-00206R000200130016-7

Declassified in Part - Sanitized Copy Approved for Release 2012/04/30 :
CIA-RDP88-00206R000200130016-7

IRK (PI) NO.	1569500	LOT NO.	G-1082-80	MAP REFERENCE		LATITUDE	10 40N	LONGITUDE	071 57W		
COUNTRY	VENEZUELA		PROVINCE	770R							
7, 8, 23											
DATE OF PHOTO		TYPE	QUALITY	CLASS	NO. OF CARDS						
Sept. 76											
CLASSIFICATION			OFFICIAL USE ONLY							CAPTIONED BY	
										C.Z.	

FORM 18-72 174 OBSOLETE PREVIOUS EDITIONS PHOTO ANALYSIS REPORT

Declassified in Part - Sanitized Copy Approved for Release 2012/04/30 :
CIA-RDP88-00206R000200130016-7

Declassified in Part - Sanitized Copy Approved for Release 2012/04/30 :
 CIA-RDP88-00206R000200130016-7

PHOTO NO.	1569990	LOT NO.	G1082-80	MAP REFERENCE		LATITUDE	44	LONGITUDE	39N 063 35W
COUNTRY	CANADA			PROVINCE	262C				
AREA NO.	SUBJECT	SUBJECT	SUBJECT	SUBJECT	SUBJECT	SUBJECT	SUBJECT	SUBJECT	SUBJECT
DATE OF PHOTO	TYPE	QUALITY	CLASS	NO. OF CARDS					
Oct 7 7									
CLASSIFICATION	OFFICIAL USE ONLY			CAPTIONED BY	C.A.				

STAT

STAT

Declassified in Part - Sanitized Copy Approved for Release 2012/04/30 :
 CIA-RDP88-00206R000200130016-7

Declassified in Part - Sanitized Copy Approved for Release 2012/04/30 :
CIA-RDP88-00206R000200130016-7

PHOTO NO.	1569991	LOI NO.	G1082-80	MAP REFERENCE		LATITUDE	44	39N	LONGITUDE	063	35W
COUNTRY	CANADA			PROVINCE	262C						
AREA NO.	SUBJECT	SUBJECT	SUBJECT	SUBJECT	SUBJECT	SUBJECT	SUBJECT	SUBJECT	SUBJECT	SUBJECT	
DATE OF PHOTO		TYPE	QUALITY	CLASS	NO. OF CARDS						
Oct. 77											
CLASSIFICATION	OFFICIAL USE ONLY			CAPTIONED BY C.A.							
FORM 12-72 174	OBSOLETE PREVIOUS EDITIONS		PHOTO ANALYSIS REPORT								

STAT

STAT

Declassified in Part - Sanitized Copy Approved for Release 2012/04/30 :
CIA-RDP88-00206R000200130016-7

