

ROUTING AND RECORD SHEET

SUBJECT: (Optional) New Building Ground Breaking				
FROM: Harry E. Fitzwater Deputy Director for Administration 7D 24 Hqs			EXTENSION []	NO. DDA 84-0028/34 DATE 22 March 1984
TO: (Officer designation, room number, and building)		DATE		OFFICER'S INITIALS
	RECEIVED	FORWARDED		COMMENTS (Number each comment to show from whom to whom. Draw a line across column after each comment.)
1. Director of Central Intelligence		28 MAR 1984	[Signature]	Bill, As I mentioned to you several months ago, and I believe you concurred, we should go with a ground breaking ceremony to be followed by a cornerstone laying ceremony about a year later. I have a group of people working on: a. A proposed guest list; b. A proposed ceremony agenda (who should get a shovel, etc); and c. All of the details, i.e., security, press, employee control, etc. I asked Public Affairs to arrange for the President to attend. Since John will be away until 13 May, we would ask that it be after that date but not be delayed longer than possible. We are planning to have a contract signed by 15 April and want to start work as soon as possible. I believe we can commence work and at a later date have the official ground breaking but hope there is not too much delay. At the current Headquarters Building Cornerstone Laying Ceremony, <u>President Eisenhower</u> was present--no other Presidents.
2. 7D 5607 Hqs				
3.				
4.				
5.				
6.				
7.				
8.				
9.				
10.				
11.				
12.				
13.				
14.				
15.				

STAT
[Signature] Harry

D-103

Cornerstone Laying
of the
Central Intelligence Agency
Building
by the
President of the United States



November 3, 1959



DWIGHT D. EISENHOWER
President of the United States



ALLEN W. DULLES
Director, Central Intelligence



CHARLES P. CABELL
Deputy Director, Central Intelligence

Program

Concert

THE UNITED STATES AIR FORCE BAND
Col. George S. Howard, *Conductor*

Arrival of the President of the United States

Invocation

REV. FREDERICK BROWN HARRIS
Chaplain of the U.S. Senate

Remarks

THE DIRECTOR OF CENTRAL INTELLIGENCE

Laying of the Cornerstone

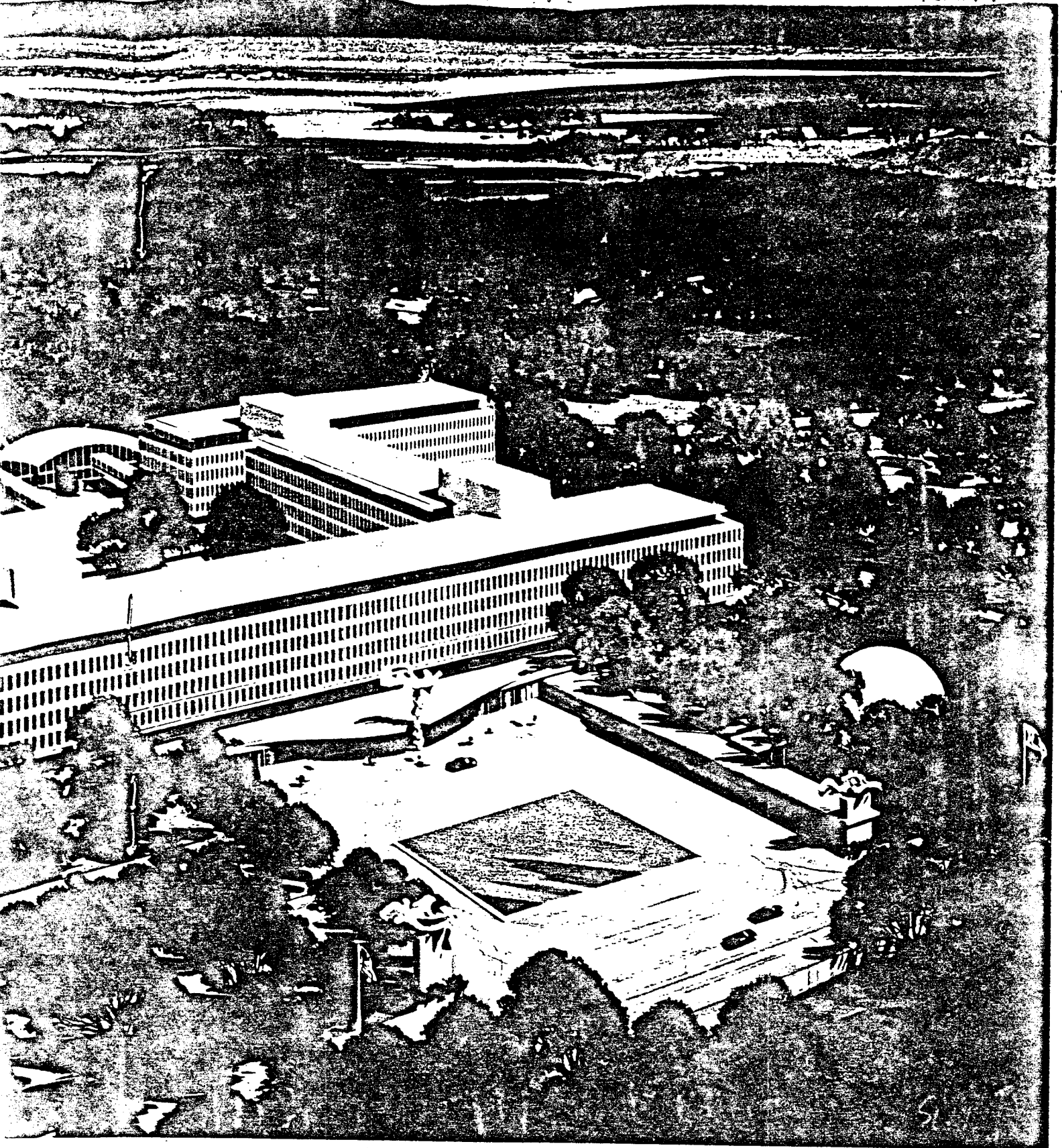
THE PRESIDENT OF THE UNITED STATES

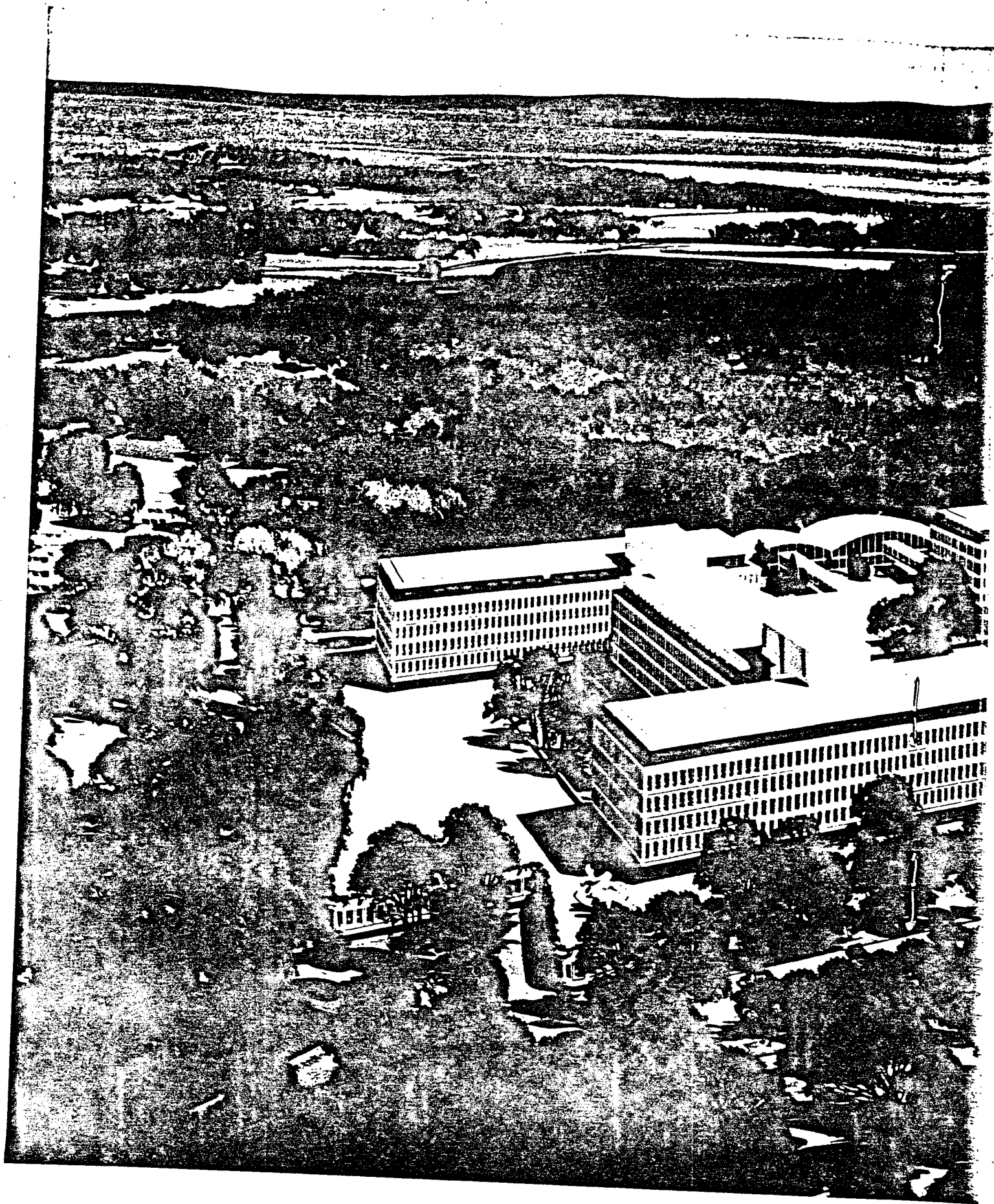
Benediction

REV. FREDERICK BROWN HARRIS

National Anthem

THE UNITED STATES AIR FORCE BAND





The Building

The new eight-story building of the Central Intelligence Agency is being constructed on a Government-owned tract of about 140 acres on the south bank of the Potomac River not far from Langley, Virginia. The site is readily accessible to Virginia, the District of Columbia, and Maryland. Access to the grounds is from Virginia State Route 123 and the George Washington Memorial Parkway, which runs along the Virginia side of the Potomac. The Parkway will later be extended to connect with the proposed Cabin John Bridge on the Washington Circumferential Highway.

The building is being constructed approximately in the center of the site and faces generally east. The building is simple and functional in the contemporary style, consisting of an irregularly shaped base surmounted by five interconnected towers. When completed it will provide approximately one million square feet of usable space. The building is being constructed of reinforced concrete, and the predominantly white facade will be highlighted by special treatment of the second and seventh floors. These floors will be set back, and their exterior walls will consist of continuous glass windows.

Central air-conditioning and sixteen high-speed and self-operated automatic elevators are to be provided for the comfort and convenience of employees of the Agency. Since almost one-half of the space in the building is provided by the ground and first floors, an escalator serving those floors is being installed to facilitate the morning and evening rush. Rooms will be lighted by fluorescent fixtures and will have acoustical ceilings and steel movable partitions. The building will contain a modern automatic pneumatic tube system and tray conveyor system.

The cafeteria will consist of a large main room and a smaller dining room and will seat about 1,400 persons at one time. Snack bars will be located throughout the building.

The auditorium will be a free-standing, dome-shaped structure connected to the main building by an underground passage. It will seat 500 persons and contain a small stage with a disappearing curved screen for film projection.

Ample parking space will be available for 3,000 cars, and convenient access to all facilities on the site will be provided by more than two miles of roadways. Very little of the building will be visible from the public highways.

Architects for the building are Harrison & Abramovitz with Frederic R. King, Associate Architect. The building is being erected by Charles H. Tompkins Company and J. A. Jones Construction Company, Joint Venturers. The Public Buildings Service of the General Services Administration is the contract agent for the building and is supervising the work.

The Cornerstone Box

In preparing for this Ceremony, a careful selection of documents and other materials for sealing within the Cornerstone of the new Central Intelligence Agency Building has been made. At some future date, when opened, the box will provide items of historic interest concerning the Central Intelligence Agency, and appropriate items in connection with today's Ceremony at which the President of the United States honors us by laying the Cornerstone.

Contents of the Cornerstone box include:

1. Memorandum for President Franklin D. Roosevelt from Major General William J. Donovan, Director of the Office of Strategic Services, dated 18 November 1944, regarding the establishment of a permanent centralized intelligence service and Memorandum from President Roosevelt to General Donovan, dated 5 April 1944, directing that General Donovan discuss his plan with the appropriate officials of the Government.
2. President Harry S. Truman's Executive Letter of 22 January 1946, establishing the National Intelligence Authority and the Central Intelligence Group.
3. Statement of General (then Lieutenant General) Hoyt S. Vandenberg, Director of Central Intelligence, before the Senate Committee on Armed Services, on 29 April 1947, in support of the sections of the proposed National Security Act of 1947 to establish the Central Intelligence Agency.
4. A Text and Explanation of Statutes and Executive Orders relating specifically to the Central Intelligence Agency, including Enabling and Appropriations Acts for the construction of the new CIA Building.
5. Reproduction of the CIA seal and its official description.
6. "William J. Donovan and the National Security." A speech by Allen W. Dulles, Director of Central Intelligence, to the Erie County Bar Association, Buffalo, New York, 4 May 1959.
7. An aerial photograph of the area of the CIA Building site.
8. Drawings of the CIA Building as it will appear when completed.
9. The Program, a recording, and photographs of the Cornerstone Ceremony.
10. Microfilm copies of daily and weekly newspapers of 3 November 1959.

U.S. GOVERNMENT PRINTING OFFICE : 1959 O-528693

CENTRAL INTELLIGENCE AGENCY

DWIGHT D. EISENHOWER

PRESIDENT OF THE UNITED STATES

ALLEN W. DULLES

DIRECTOR OF CENTRAL INTELLIGENCE

GENERAL CHARLES P. CABELL

DEPUTY DIRECTOR OF CENTRAL INTELLIGENCE

LAWRENCE K. WHITE

DEPUTY DIRECTOR FOR SUPPORT

HARBINE S. CHANDLER JR.

CHIEF BUILDING PLANNING STAFF

FRANKLIN PEOETE

GENERAL SERVICE ADMINISTRATOR

F. MORAN Mc CONIHE

COMMISSIONER PUBLIC BUILDINGS SERVICE

ARCHITECTS

WALBAGE K. HARRISON, MAX ABRAHAMOVITZ

ASSOCIATE ARCHITECT

FREDERIC R. KING

CHAS. PETOMPKINS CO., J. A. JONES CONSTRUCTION CO.

BUILDERS

1959

The Cornerstone