

L 31758-65

ACCESSION NR: AR5005729

the upper atmosphere), and solar activity. The acceleration of four satellites was investigated (1957  $\beta$ , 1958  $\delta_1$ , 1958  $\delta_2$ , and 1958  $\epsilon$ ). The values of the acceleration were corrected graphically for the influence of the altitudinal and diurnal effects. The altitude effect is made up of changes in the acceleration due to the change in the drag, owing to the fact that the altitude of the satellite perigee changes with time. The diurnal effect is the change of the atmospheric density (satellite acceleration) due to the periodic displacement of the perigee from the illuminated region to the shadow and vice versa. The values of the acceleration, corrected for the influence of these effects, were compared with the characteristics of the solar activity, namely the values of the geomagnetic planetary index  $K_p$  and the flux of radio emission from the sun  $S$  at 10.7 cm wavelength. No clear-cut correlation was observed between these quantities, although it is impossible to deny the existence of a connection between them. This connection is apparently much more

Card 2/3

L 31758-65

ACCESSION NR: AR5005729

complicated than has been assumed, and more highly perfected methods are necessary to disclose it. Bibliography, 10 titles. N. Slovokhotova.

SUB CODE: SV, ES

ENCL: 00

Card 3/3

L 51310-65 EWP(m)/ENG(v)/EWA(h)/ENG(e)-2/EWT(1)/EEC(t)/FS(v)-3/FCC/EEC(a)  
EEC(j)/EEC(r)/EWA(d)/FSS-2 Pe-5/Pg-4/P1-4/Po-4/Pq-4/Pae-2/Feb TT/GW

ACCESSION NR: AP5015674

UR/0293/65/003/003/0469/0472  
551.510.536:629.19

AUTHOR: Slovokhotova, N. P.

58  
B

TITLE: Variations in atmospheric density in 1960—1963, as derived from measurements of the orbits of artificial earth satellites

SOURCE: Kosmicheskiye issledovaniya, v. 3, no. 3, 1965, 469-472

TOPIC TAGS: atmospheric density, satellite data, upper atmosphere, solar cycle, solar effect, satellite orbit

ABSTRACT: The daily variations of atmospheric density at heights of 200—300 km have been investigated on the basis of data obtained from Soviet satellites in the period 1960—1963. The investigations confirm the existence of diurnal density fluctuations at these heights in the period approaching minimal solar activity (1962—1963). Thus, for example, at a height of about 300 km, satellite 1960c<sub>3</sub> found that  $\rho_{\max}/\rho_{\min} = 1.9$ . At a height of about 250 km Cosmos-11 found that the ratio was 1.5, while at 200 km Cosmos-2 found the ratio to be 1.1 and 1.2. Between the middle of 1960 and the beginning of 1962, a slight density drop was noted at Card 1/2

L 51310-65

ACCESSION NR: AP5015674

a height of about 300 km. Thus,

$$\rho_{min 1960} / \rho_{min 1962} = 1,2 (1960e_3),$$

$$\rho_{max 1960} / \rho_{max 1962} = 1,2 (1960e_3).$$

These findings agree with those of earlier investigators (D. King-Hele, J. Reese. The decrease in upper atmosphere density between 1957 and 1963 as revealed by satellite orbits. Royal Aircraft Establishment, Farnborough, England, 1963) and show that in the period approaching minimal solar activity, the amplitude of daily variations of atmospheric density at 200 km remains the same as in the period of near maximal activity. Orig. art. has: 2 figures. [DM]

ASSOCIATION: none

SUBMITTED: 08Jun64

ENCL: 00

SUB CODE: ES, SV

NO REF SOV: 014

OTHER: 010

ATD PRESS: 5016

*BJB*

Card 2/2

1. Title: SIC. O. L. A. S. A.

2. Ref. (0.0)

"The Isomerization of poly(1,3-butadiene) under the Influence of Aluminum Chloride --- II. The Isomerization of Isopropylsuccinimide," *Sov. Chem. Rev.*, 16, No. 10, 1947. *Lab. of Org. Chem. Acad. N. D. Zelinskiy, Moscow State Univ. received 17 April 1949.*

3. Report -101r, 3 Jan 1952

СЛОВОТВОРЕНА, Т. А.

Verbatim: - "The interaction of organic substances with water vapors in the presence of nickel," Vestnik Mosk. un-ta, 1948, No. 12, p. 101-12, - Bibliog: P. 112

SO: U-4355, 14 August 53, (Letopis 'Zhurnal 'nykh Statey, No. 15, 1949.)

SLOVOKHOTOVA, T. A.

2

Catalytic reactions of cyclohexane in the presence of water on nickel catalysts. Slovkhotova, T. A., P. A. Panyay (Moscow State Univ., Vsesoyuz. Nauch. Ucheb. Zaved., No. 2, Ser. Khim. i Kibernet., Moskva, 1977, 34(1951)). - In the presence of H<sub>2</sub>O, cyclohexane (I) on Ni in the temp. range 250-350° undergoes simultaneously 3 parallel reactions: (1) dehydrogenation, I → C<sub>6</sub>H<sub>6</sub> + 3H<sub>2</sub>; (2) hydrogenolysis, I + OH<sub>2</sub> → 6CH<sub>4</sub>; (3) I + 12H<sub>2</sub>O → 6CO<sub>2</sub> + 18H<sub>2</sub>. Expts. were run with 3 g. of a Ni/Al<sub>2</sub>O<sub>3</sub> catalyst, at a feed rate of I of 0.2 ml./min., without or with H<sub>2</sub>O (vol. ratio H<sub>2</sub>O/I = 7), at 250, 275, 300, 325, and 350°. The rate of evolution of gas was const. in all expts., which indicates absence of poisoning of the catalyst. Exptl. data (temp., rate of evolution of gas in ml. (STP)/min., % C<sub>6</sub>H<sub>6</sub> in the catalyzate, vol. % of H<sub>2</sub>, CH<sub>4</sub>, CO<sub>2</sub> in the gas) are: pure I, 250° 22.2, 17.59, 97.9, 2.1, —; 275°, 26.0, 19.60, 87.0, 3.0, —; 300°, 34.4, 26.59, 94.0, 6.0, —; 325°, 47.0, 29.78, 93.0, 7.0, —; 350° 53.0, 31.65, 91.5, 8.5, —; I + H<sub>2</sub>O, 250°, 4.34, 5.16, 87.74, 6.06, 6.20, 275°, 7.40, 7.91, 83.24, 7.82, 8.92, 300°, 15.20, 8.63, 76.26, 11.67, 12.17, 325°, 23.40, 9.35, 69.31, 18.18, 12.51, 350° 31.80, 12.77, 64.78, 18.59, 16.63. The following are data of the rates for the 3 simultaneously occurring reactions with I + H<sub>2</sub>O (temp., ml. gas evolved per min., 10<sup>-4</sup> X moles I reacted per min. by reactions (1), (2), and (3), % I reacted (relative to the original amt. of I) by reactions (1), (2), and (3), total % I reacted): 250°, 4.34, 4.9, 0.20, 0.20, 2.65, 0.11, 0.10, 2.86; 275°, 7.40, 7.40, 4.34, 4.9, 0.20, 0.23, 0.26, 4.28; 300°, 15.20, 10.06, 1.18, 1.37, 5.45, 0.64, 0.74, 6.52; 325°, 23.40, 13.23, 2.10, 7.05, 1.35, 1.15, 9.55; 350°, 31.80, 16.6, 4.43, 3.97, 9.00, 2.39, 2.14, 13.50. The corresponding data for I without H<sub>2</sub>O (reactions (1) and (2) only) are: 250° 22.2, 33, 0.25, 17.80, 0.20, 18.00; 275° 26.0, 38, 0.56, 20.50, 0.30, 20.80; 300° 34.4, 51, 1.83, 27.80, 0.80, 28.40; 325° 47.0, 70, 2.45, 37.84, 1.32, 39.16; 350°, 55.0, 82, 3.46, 44.32, 1.87, 46.19. The temp. dependences of each of these rates obey Arrhenius' law, and give the following values for the apparent activation energies E (cal./mole), the preexponential factor k<sub>0</sub>, and for 10<sup>-4</sup>/a (defined by a = ln A<sub>0</sub>/E): reaction (1), pure I, 7076, 2.37 X 10<sup>4</sup>, 1.75; I + H<sub>2</sub>O, 8256, 1.28 X 10<sup>4</sup>, 2.01; reaction (2), pure I, 16350, 7.67 X 10<sup>4</sup>, 2.88; I + H<sub>2</sub>O, 21024, 1.32 X 10<sup>4</sup>, 2.62; reaction (3), I + H<sub>2</sub>O, 19240, 2.13 X 10<sup>4</sup>, 2.61. Presence of H<sub>2</sub>O evidently inhibits reaction (1); the rate of the dehydrogenation is reduced by a factor of 5, through an increase of E by 1.85 cal./mole, and a decrease of k<sub>0</sub> by a factor of 1.85; for reaction (2), the E without and with H<sub>2</sub>O are very close and the a practically equal. The value of a is taken to be characteristic of the orientation of the reacting mol. on the active center; if so, it follows that this orientation is the same in the presence and in the absence of H<sub>2</sub>O. The same taken it is concluded that reaction (1) and (2) have different orientations of the adsorbed I mol. The rate of reaction (2) is raised in the presence of H<sub>2</sub>O from 1.35 to 21.024 cal./mole, i.e. H<sub>2</sub>O inhibits the C—C bond rupture much more strongly than the rupture of the C—H bond. Nevertheless, the over-all rate of reaction (2) is raised in the presence of H<sub>2</sub>O by a factor of 1.85, which indicates an increase of k<sub>0</sub> compensates the increase in E.

USSR/Chemistry - Fuels

FD-1144

Card 1/1            Pub. 129-8/23

Author            : Slovkhotova, T. A.; Sovalova, L. I.; Kazanskiy, B. A.; Balandin, A. A.

Title             : Catalytic conversion of isomeric octanes with water over a nickel and kieselguhr catalyst

Periodical       : Vest. Mosk. un., Ser. fizikomat. i yest. nauk, 9, No 7, 65-72, Oct 1954

Abstract         : Saturated hydrocarbons react with water over a nickel and kieselguhr catalyst forming products of gradual demethylation of the original hydrocarbon. The degree of conversion depends on the structure of the hydrocarbon. 2, 2, 4-Trimethylpentane reacts slower than the 2, 2, 3 isomer. Eight curves. Ten references (five USSR).

Institution      : Chair of Organic Chemistry

Submitted        : February 1, 1954



5. Хохолова, Т.А.

7  
Catalytic demethylation of 2-methylpyridine into pyridine  
by means of water vapor  
~~Хохолова Т.А.~~  
~~Хохолова Т.А.~~  
of 2-methylpyridine  
at 210°C and 11  
atmosphere  
of water vapor  
see also 1957

3

PM

BALANDIN, A.A.; SLOVOKHOTOVA, T.A.; STRASHNOVA, I.A.

Catalytic decomposition of isomeric xylenes in the presence of  
water vapor. Vest.Mosk.un. 12 no.1:101-110 '57. (MLBA 10:8)

1.Moskovskiy universitet, Kafedra organicheskogo kataliza.  
(Xylene) (Catalysis)

SLOVOKHOTOVA, T.A.; BALANDIN, A.A.; NAZAROVA, D.V.

Catalytic conversions of ethane with participation of water vapor.  
Part 1: Effect of water concentration in the reacting mixture on  
conversions of ethane. Characteristics of carbon formation. Vest.  
Mosk. un. Ser. mat., mekh., astron., fiz. khim., 12 no.5:193-198  
'57. (MIRA 11:9)

1. Kafedra organicheskogo kataliza Moskovskogo gosudarstvennogo  
universiteta.

(Ethane) (Chemical reaction, Rate of)

Slivchikova, I. M.

7  
 Isomerization of polymethylene hydrocarbons under the influence of aluminum chloride XXI. Isomerization of cyclohexylcyclopentane. I. A. Slavokholova, M. B. Turova-Polyak, I. I. Goron, and B. G. Trishchova (State Univ., Moscow). *Zhur. Obshchei Khim.* 27, 900-5 (1957); *cf. C.A.* 47, 12207f; 51, 16372g.—Addn. of 1/2 mole  $AlCl_3$  to cyclohexylcyclopentane (I) produces an exothermic reaction and stirring the mixt. 20 hrs. longer resulted in isolation of *trans*-2-methyldecahydronaphthalene (II), identified by its phys. consts. and by conversion to 2- $C_{10}H_7Me$ . The substance II was also subjected to Raman spectrum detn., as was an authentic specimen prepd. by hydrogenation of 2- $MeC_{10}H_7$  over Raney Ni. Pure II has Raman frequencies ( $cm^{-1}$ ): 224(0), 276(0), 329(0.8), 353(0.5), 373(4.5), 409(2), 444(0), 464(0.2), 500(4), 530(0.1), 593(2), 621(0.4), 735(1), 755(12), 796(0.3), 849(4.5), 863(0), 929(0), 978(0), 1015(1), 1012(5.5), 1030(1), 1076(3.5), 1142(0.1), 1165(0), 1197(1.5), 1241(3), 1267(2), 1296(0.4), 1347(2.5), 1354(3), 1440-1460(10). The result was the same at 100°, while at 0° the reaction was moderate in its degree, but also yielded II. C. M. Kosolupoff

Distr: 4E4j/4E2c(j)

2 May

11

PM

AUTHORS: Slovkhotova, T.A., Balandin, A.A., and Nazarova, D.V. SOV/55-58-1-26/33

TITLE: Catalytic Change of Ethane With Participation of Water Vapor. II. The Dependence of the Velocity of Several Ethane Reactions With Participation of Water on the Volume Velocity and Temperature (Kataliticheskoye prevrashcheniye etana s uchastiyem parov vody. II. Zavisimost' skorosti razlichnykh reaktsiy etana v prisutstvii vody ot ob'yemnoy skorosti i temperatury)

PERIODICAL: Vestnik Moskovskogo universiteta, Seriya fiziko-matematicheskikh i yestestvennykh nauk, 1958, Nr 1, pp 193-201 (USSR)

ABSTRACT: The authors investigated the dependence of the ethane changes for a catalytic influence of nickel on the volume velocity of the consumption of ethane and the temperature. Reactions:  $C_2H_6 + 4H_2O = 2CO_2 + 7H_2$ ;  $C_2H_6 = 2C + 3H_2$ ;  $C_2H_6 + H_2 = 2CH_4$ . It was stated: For a carbon concentrated catalyzer of constant activity the activating energy of the ethane reaction with water is almost constant for a change of the volume velocity of 6-12 l ethane for 1 l of the catalyzer and for  $H_2O$ -concentration of 16.6 to 29.6, and in the mean = 15000 cal. For a fresh catalyzer the same energy amounts

Card 1/2

Catalytic Change of Ethane With Participation of Water Vapor.II. The Dependence of the Velocity of Several Ethane Reactions With Participation of Water on the Volume Velocity and Temperature SOV/55-58-1-26/33

23650 cal.

There are 7 references, 6 of which are Soviet, and 1 American.

ASSOCIATION: Kafedra organicheskogo kataliza (Chair of Organic Catalysis)

SUBMITTED: January 11, 1957

Card 2/2

5(3)

AUTHORS: Sosnina, I.Ye., Slovokhotova, T.A., SOV/55-58-5-23/34  
Yudkina, T.P.

TITLE: Synthesis of Dicyclopentylmethane (Sintez ditsiklopentilmetana)

PERIODICAL: Vestnik Moskovskogo universiteta, Seriya matematiki, mekhaniki,  
astronomii, fiziki, khimii, 1958, Nr 5, pp 145 - 150 (USSR)

ABSTRACT: Starting from chlorocyclopentane and ethylformate the authors  
synthetically produced a 99.60 % pure dicyclopentylmethane  
(according to a method deviating from A.F. Plate and V.I. Stanko [Ref 2]). The degree of cleanliness was determined  
according to the method of A.G. Anikin, Ya.I. Gerasimov, G.M. Dugacheva and N.N. Kozhevnikov [Ref 7]. The spectrum was re-  
corded. Furthermore it was stated : The dehydration of di-  
cyclopentylcarbinol by pyrolysis of its acetate or by means  
of magnesium sulphate can be recommended as a method for de-  
hydration of bicyclic alcohols.

Card 1/2

20

Synthesis of Dicyclopentylmethane

SOV/55-58-5-23/34

There are 14 references, 8 of which are Soviet, 2 American,  
2 German, and 2 Roumanian.

ASSOCIATION: Kafedra organicheskogo kataliza (Chair of Organic Catalysis)

SUBMITTED: October 20, 1957

Card 2/2



AUTHORS: Balandin, A. A., Member, Academy of Sciences, USSR, Sovalova, L. I., Slovokhotova, T. A. SOV/20-120-4-24/67

TITLE: Catalytic Transformations of 2-Methyl-Thiophene Under Steam Influence (Kataliticheskiye prevrashcheniya 2-metil'tiofena pod vliyaniyem parov vody)

PERIODICAL: Doklady Akademii nauk SSSR, 1958, Vol. 120, Nr 4, pp. 775-778 (USSR)

ABSTRACT: Difficulties were bound to occur in connection with the problem of the applicability of the reaction of the catalytic demethylation to the thiophene derivatives because of the specific behaviour of the latter on metallic catalysts in the presence of hydrogen (Refs 6-11) which is known to be a product of the said reaction. Ni/Al<sub>2</sub>O<sub>3</sub> and Co/Al<sub>2</sub>O<sub>3</sub> were used as catalysts. The velocity and the products of the reaction of 2-methyl-thiophene with water change gradually if its vapors are allowed to pass above a fresh catalyst (Fig 1, Table 1). 2-methyl-thiophene separates the methyl group and is subjected to a small extent to a ring cleavage. The existence of lateral methyl groups renders the ring system more reactive. During the first minutes of the experiment the liquid catalyzed product

Card 1/3

Catalytic Transformations of 2-Methyl-Thiophene  
Under Steam Influence

SOV/20-120-4-24/67

contains thiophene which vanishes as soon as the velocity of the gas separation has attained a constant value. The quantity of  $\text{CO}_2$  first exceeds that of the saturated compounds, vanishes then, however, together with thiophene. Unsaturated hydrocarbons and  $\text{H}_2\text{S}$  occur at temperatures higher than  $400^\circ$ . The co-catalyst has an effect similar to that of Al. Table 2 shows the dependence of the composition of the liquid and gaseous products on the temperature, on the quantity of water, and on the composition of the catalyst in the experiment with methyl-thiophene. Within 1 hour of heating in hydrogen the consumed catalyst is restored, unless it had lost its activity completely before. A longer heating increases its activity (Table 3). Herefrom it can be concluded that methyl-thiophene is demethylated in the reaction in question. The complete cleavage of the methyl-thiophene molecule which occurs as well may develop with the participation of either hydrogen or water. The dealkylation of methyl-thiophene thus determined is a model reaction for the production of thiophene from alkyl substituted. The present paper in principle shows a possibility of obtaining accessible

Card 2/3

Catalytic Transformations of 2-Methyl-Thiophene  
Under Steam Influence

SOV/20-120-A-24/67

raw material for the synthesis on thiophene basis from sulfurous mineral oils and slate resins (Ref 12). The reaction can be carried out on a mobile contact mass with a continuous regeneration of the circulating catalyst. There are 2 figures, 3 tables, and 19 references, 12 of which are Soviet.

SUBMITTED: February 18, 1958

1. Thiophene aldehydes--Catalysis
2. Metal catalysts--Chemical effects

Card 3/3

YUY TSYA-YUN [Yü Chia-yung]; BALANDIN, A.A.; SLOVOKHOTOVA, T.A.

Using gas-liquid chromatography for the quantitative analysis of products of the catalytic transformations of isomeric cresols. Vest. Mosk.Un.Ser.2: khim. 16 no.6:62-66 N-D '61. (MIRA 14:5)

1. Moskovskiy gosudarstvennyy universitet. Kafedra organicheskogo kataliza. (Cresol) (Catalysis) (Chromatographic analysis)

BALANDIN, A.A., akademik; SLOVOKHOTOVA, T.A.; YUY TSZYA-YUN [Yü Chia-yung]

Catalytic demethylation of isomeric cresols to phenol under the effect of water vapors. Dokl. AN SSSR 141 no.4:839-842 D '61. (MIRA 14:11)

1. Moskovskiy gosudarstvennyy universitet im. M.V. Lomonosova.  
(Cresols) (Phenol) (Catalysis)

SLOVOKHOTOVA, T.A.; BALANDIN, A.A.; POLETAYEVA, T.I.; YUY TSZYA-YUN  
[Yü Chia-yung]

Kinetics of toluene demethylation in the presence of the excess of  
water over nickel catalysts. Izv. AN SSSR Otd.khim.nauk no.1:  
120-121 Ja '62. (MIRA 15:1)

1. Moskovskiy gosudarstvennyy universitet im. M.V.Lomonosova.  
(Toluene) (Methyl group)

SLOVOKHOTOVA, T.A.; BALANDIN, A.A.; YUY TSZYA-YUN [Yu Chia-yung]

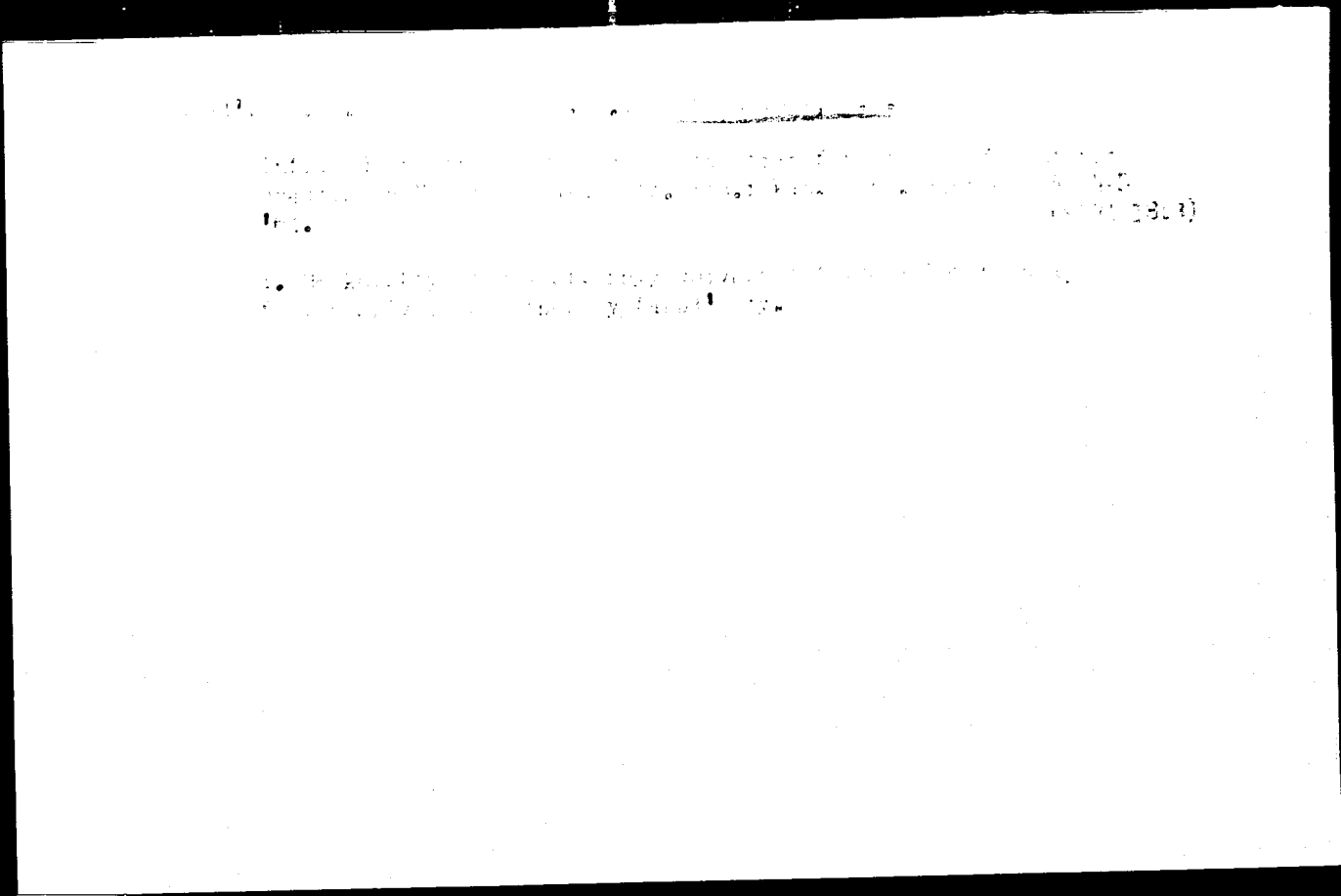
Thermodynamics of the reaction of demethylation of toluene  
and cresols with water vapor. Khim.prom. no.7:513-517 J1  
'63. (MIRA 16:11)

GONEYM, F.B.; BALANDIN, A.A.; SLOVOKHOTOVA, T.A.

Kinetics of ethane hydrogenolysis on a Ru-SiO<sub>2</sub> catalyst. Izv.  
AN SSSR. Ser. khim. no.11:1905-1910 N '63. (MIRA 17:1)

1. Moskovskiy gosudarstvennyy universitet imeni Lomonosova.





100777870A

Gas-phase mass-spectrometric analysis of the products of catalytic  
transformations of organic compounds. Vych. Mosh. un. Ser. 2:  
Khim. 19 no. 1:50-55 N-D '64. (MIRA 1B:3)

1. Institut organicheskogo kataliza Mskovskogo universiteta.

BALASHOVA, S.A.; SIGVOKHOTOVA, T.A.; BALANDIN, A.A.

Effect of the structure of saturated hydrocarbons on their activity in the reaction with water vapor on Ni-Cr<sub>2</sub>O<sub>3</sub> catalyst. Izv. AN SSSR Ser. khim. no.2:275-281 '65. (MIRA 18:2)

1. Moskovskiy gosudarstvennyy universitet.

ZAMYCHLYAYEVA, L.I.; BALANDIN, A.A.; SIVOKHOTOVA, T.A.

Conversion of methylated pyridines in the presence of water vapors on a nickel-alumina catalyst. Izv. AN SSSR Ser. Khim. no.2:330-336 '65. (MIRA 18:2)

1. Moskovskiy gosudarstvennyy universitet.

SLOVOKHOTOVA, T.A.; BALANDIN, A.A.; PETROV, E.S.; SHOLIN, A.F.

Catalytic hydrogenolysis of ethane and cyclohexane on Ni-Kieselguhr catalysts. Izv. AN SSSR. Ser. khim. no.5:785-792 '65. (MIRA 18:5)

1. Moskvoskiy gosudarstvennyy universitet im. Lomonosova.

BALANDIN, A.A.; SLOVOKHOTOVA, T.A.; SHOLIN, A.F.; UGOL'TSEVA, L.A.

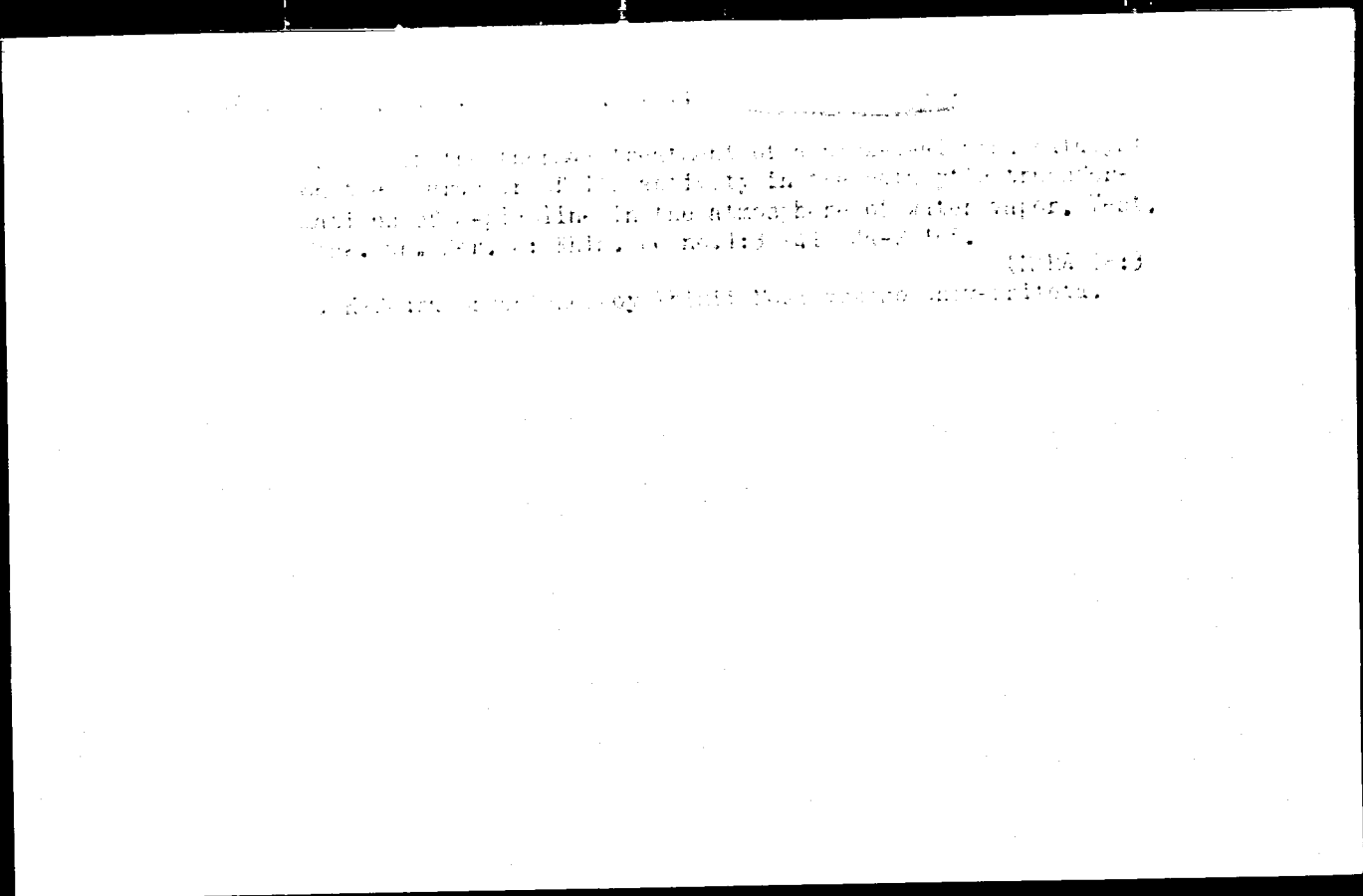
Hydrogenolysis of ethane in a flow system on nickel catalysts.  
Kin. i kat. o no.1:115-120 Ja-F '65. (MIRA 18:6)

1. Moskovskiy gosudarstvennyy universitet.

IGNAT'YEVA, I.A.; MUSAYEV, T.N.; SLOVOKHOTOVA, T.A.

Study of interaction of isopropyl alcohol with a Ni/Al<sub>2</sub>O<sub>3</sub> catalyst  
by infrared spectroscopy. *Kin. i kat.* 6 no.2:294-299 Apr '65.  
(MIRA 18:7)

1. Moskovskiy gosudarstvennyy universitet imeni Lomonosova, fizi-  
cheskiy i khimicheskiy fakul'tety.





BALANDIN, A.A., akademik; FRAG, M., SLOVCKHOTOVA, T.A.

Comparative study of the transformation kinetics of benzene and its  
C<sub>7</sub> - C<sub>8</sub> homologs under the effect of steam over a nickel-chromium  
catalyst. Dokl. AN SSSR 163 no.3:638-641 J1 '65. (MIRA 18:7)

1. Moskovskiy gosudarstvennyy universitet.

ZAMYKHAYEVA, I.L.; SLOVCKHOTOVA, T.A.; BALANDIN, A.A.

Activity of isomeric picolines, cresols, and xylenes in  
catalytic conversions with steam. Vest. Mosk. un. Ser. 2:Khim. 20  
no.4:39-41 JI-Ag '65. (MIRA 18:10)

1. Kafedra khimicheskoy kinetiki Moskovskogo gosudarstvennogo  
universiteta.

СЛОВОКИНОВА, Т.А.; БАЛАНДИН, А.А.; КИПЦОВ, И.

Rate of transformations of m-cresol under the effect of water  
vapor on nickel catalysts. Vest. Mosk. un. Ser. 2: Khim. 20  
no.6:30-33 N-D '65. (MIRA 19:1)

1. Kafedra organicheskogo kataliza Moskovskogo universiteta.  
Submitted May 1. 1964.

SLOVOKHOTOVA, Ye.N.

Influenza in Stalinabad in 1960. Zdrav. Tadzh. 8 no.3:26-30 My-  
Je '61. (MIRA 14:6)

1. Iz Stalinabadskogo instituta epidemiologii i gigiyeny.  
(~~STALINABAD~~—INFLUENZA)

36270

S/181/62/004/003/009/045  
B102/B104

24.7900

AUTHORS: Pili'shchikov, A. I., Slovokhotova, Z. D., and Bazarov, U. B.

TITLE: Dependence of the resonance field in ferrite single crystals on temperature and sample dimensions

PERIODICAL: Fizika tverdogo tela, v. 4, no. 3, 1962, 629 - 633

TEXT: The resonance field strength

$$H_{res} = \frac{\omega}{\gamma} + \alpha \frac{|k_1|}{M} + \frac{4\pi^2}{90} \cdot 4\pi M (\alpha + 5) \left(\frac{d}{\lambda}\right)^2 \quad (3)$$

in an anisotropic spherical single crystal (manganese ferrite) was measured as dependent on temperature and crystal orientation with respect to the external magnetic field.  $\omega/\gamma$  is the resonance field for an isotropic sphere,  $\gamma$  - gyromagnetic ratio,  $k_1$  - first anisotropy constant,  $M$  - saturation magnetization;  $\alpha$  depends on the crystallographic orientation ( $[100] : \alpha = 2$ ,  $[111] : \alpha = -4/3$ ,  $[110] : \alpha = -1/2$ ).  $d/\lambda \ll 1$ ,  $d$  - sample diameter,  $\lambda$  - vacuum wave length. The measurements were carried out in a waveguide ( $\lambda \approx 3$  cm) in which the sample was placed at a distance of  $\lambda/2$  from the closed end and directed with the face  $(1\bar{1}0) \parallel H_{ext}$ . A rotator, a heating coil, and a

Card 1/3

S/181/62/004/003/003/045  
B102/B104

Dependence of the ...

thermocouple were included in the arrangement. Measurements were made with single crystal specimens, cut into spheres of different diameters, as well as with one specimen whose diameter was successively reduced. The results of both experiments are similar. For  $H \parallel [100]$ ,  $H_{res}$  decreases with increasing temperature, for  $H \parallel [111]$ ,  $H_{res}$  has a maximum. In all cases  $H_{res}$  grows with the sample diameter. With  $H \parallel [100]$  the  $H_{res}(t)$  curves have a point of inflection, with  $H \parallel [110]$  they decrease monotonically with increasing  $t$ . The measurements were made in the range  $0 < t < 250^\circ\text{C}$ . The course of the curves can be explained by assuming that up to  $\sim 80^\circ\text{C}$ ,  $H_{res}(t)$  is mainly determined by  $K_1(t)$ , but at higher temperatures by  $M(t)$  or perhaps by  $\epsilon(t)$ . The field of propagation is a linear function of  $(d/\lambda)^2$  within the limits of error. There are 5 figures and 4 references: 2 Soviet and 2 non-Soviet. The two references to English-language publications read as follows: R. A. Hurd. Canadian J. Phys. 36, 1072, 1958; J. E. Mercereau. Journ. Appl. Phys. Suppl. 30, No. 4, 184, 1959. †

Card 2/3

Dependence of the ...

S/181/62/004/003/009/045  
B102/B104

ASSOCIATION: Moskovskiy gosudarstvennyy universitet im. M. V. Lomonosova  
(Moscow State University imeni M. V. Lomonosov)

SUBMITTED: October 9, 1961

f

Card 3/3

ROMANOV, V.; SLOVTSOV, A.

Mechanize the quarrying of marble. Na stroi. Ros. 3 no.5:33  
My '62. (MIRA 15:9)

1. Nachal'nik proizvodstvennogo otdela upravleniya Promstroymaterialov Chelyabinskogo soveta narodnogo khozyaystva (for Romanov).
2. Glavnyy inzh. Koyelginskogo rudoupravleniya (for Slovtsov).  
(Marble industry)



XXXXXXXXXX, N. S. S. XXXXXXXXXX

XXXXXXXXXX

XXXXXXXXXX, N. S. S. XXXXXXXXXX. In: XXXXXXXXXX, No. 1, 1957.

Monthly List of Russian Acquisitions, Library of Congress, November 1956. UNCLASSIFIED.

USSR / Forestry. Forest Crops

K-4

Abs Jour: Ref Zhur-Biol., No 13, 1958, 58406

Author : Slovtsov, A. H.

Inst : Not given

Title : Germination Energy as a Reliable Indicator of  
the Quality of Forest Seeds

Orig Pub: Lesn. kh-vo, 1958, No 1, 31-32

Abstract: No abstract

Card 1/1

СЛОВИЦКА, Ле. V.

"Concentrated Method for Curing Syphilis," Vest. Venerol. i Dermatol., No. 4, 1948.  
Mbr., Clinic Dermato-Veneral Diseases, Voronezh Med. Inst., -1948-.

ACC NR: AP6028292

SOURCE CODE: UR/0363/66/002/006/0973/0975

AUTHOR: Slovyanskikh, V. K.; Ellert, G. V.; Yarembash, Ye. I.; Korsakova, M. D. 34  
3

ORG: Institute of General and Inorganic Chemistry im. N. S. Kurnakov, Academy of Sciences, SSSR (Institute obshchey i neorganicheskoy khimii Akademii nauk SSSR)

TITLE: Preparation of uranium chalcogenide single crystals by means of chemical transport reactions 27

SOURCE: AN SSSR. Izvestiya. Neorganicheskkiye materialy, v. 2, no. 6, 1966, 973-975

TOPIC TAGS: uranium compound, single crystal growing, sulfide, selenide, telluride

ABSTRACT: The article describes the preparation of  $USe_2$ ,  $USe_3$ ,  $UTe_2$  and  $US_2$  single crystals from uranium metal and the chalcogenide in evacuated quartz ampoules with bromine as the transport agent, and presents some data on the conditions of their growth and morphology. The yield of the single crystals was studied as a function of the temperature, bromine concentration, total amount of uranium present in the ampoule and the Te/U ratio. As the latter increases from 0.9 to 1.9,  $UTe_2$  single crystals grow; above 1.9,  $UTe_3$  crystals begin to grow. As the Te/U ratio increases the amount of the crystallizing tritelluride increases. At  $Te/U \leq 1.1$ , fine silicon single crystals are formed together with  $UTe_2$ , and at  $Te/U = 0.7$ , practically only Si single crystals are formed. The dependence of the yield of  $UTe_2$  crystals on the initial bromine concentration was determined: in the range of low Br concentration, as

Card 1/2

UDC: 546.791:851:548.55

SLOWACKI, Antoni

Mechanical washing of passenger cars on the railroads of the German Democratic Republic. Przegl kolej mechan 14 no.8:252-254 Ag '62.

1. Centralny Zarzad Wagonow, Warszawa.

SLOWACKI, Antoni

Heating of freight car axle pins. Przegł kolej mechan 15  
no. 5: 146-148 My '63.

1. Centralny Zarząd Wagonów, Warszawa.

SLOWANSKI, L.

Ohmic resistance tensiometry as applied to the investigation of deformations in concrete and reinforced-concrete structures. p. 355  
(INZYNIERIA I BUDOWNICTWO, Vol. 13, No. 9, Sept. 1956, Warsaw Poland)

SO: Monthly List of East European Accessions (EEAL) IC, Vol. 6, No. 9, Oct. 1957, Uncl.

SIOMALSKI, L.; KOWALCZYK, R.

SIOMALSKI, L.; KOWALCZYK, R. Problems of technological progress in the field of  
research on materials and construction at the Institute of Building  
p. 432

Vol. 13, no.11, Nov. 1956  
INZYNIERIA I BUDOWNICTWO  
POLITICAL SCIENCE  
Warsawa, Poland

So: East European Accession Vol. 4, No. 3, March 1957



SIEMANSKI, L; SZALAKOWSKI, Z.

Modern tensiometric instruments of the Workshop of Strains and Stress Analysis  
and Defectoscopy of the Institute of Building Construction. p. 205.

(INZYNIERIA I BUDOWNICTWO, Vol. 11, No. 5, May 1957, Warszawa, Poland.)

SO: Monthly List of East European Accessions (EIAL) Lc. Vol.6, No. 10, October 1957. Uncl.

SLOWANSKI, L.; SNIADKOWSKI, L.

Electroresistant tensiometers constructed by by institute of Building Construction.

p. 333 (Inzynieria I Budownictwo) Vol. 14, No. 9, Sept. 1957, Warszawa, Poland

SO: MONTHLY INDEX OF EAST EUROPEAN ACCESSIONS (E~~RA~~I) LC, VOL. 7, NO. 1, JAN. 1958

SIEMANSKI, L.: ZALESKI, S.

Investigations on the strength of the laminated wall elements, p. 290

INZNIERIA I BUDOWNICTWO. (Naczelna Organizacja Techniczna i Polski  
Zwiazek Inzynierow i Technikow Budowlanych) Warszawa, Poland.  
Vol 16, No. 7, July 1959

Monthly List of East European Accessions Index (EEAI), LC, Vol. 8, No. 11,  
November 1959  
Uncl.

SIGMANSKI, lech, mgr inz.

New possibilities of carrying on studies on strength in the  
Institute of Civil Engineering. Inst tech bud biul inf no.17:  
66-67 '64.

SIEMPSKI, Sylwester, SLOMANSKI, Wladyslaw

Polynetic Valley of the Wierzbica River near Plock. Acta  
geol Pol 14 no.3:437-457 '64.

1. Department of Geologic Survey of the Institute of Geology,  
Polish Academy of Sciences, Warsaw.

SKOMPSKI, Sylvester; SLOWANSKI, Wladyslaw

New contribution to the knowledge of interglacial deposits at Zoliborz,  
Warsaw. Kwartalnik geol 5 no.2:459-467 '61.

1. Zaklad Zdjec Geologicznych Instytutu Geologicznego.

SLOWANSKI, Wladyslaw

Early Holocene lake deposits at Laska near Brusy. Kwartalnik geol 5  
no.3:719-736 '61.

1. Zaklad Zdjec Geologicznych Instytutu Geologicznego.

~~SKOMPSKI~~, Sylwester; SLOWANSKI, Wladyslaw

Geological problems of the city of Plock and its vicinity.  
Kwartalnik geol 5 no.4:951-952 '61.

1. Zaklad Zdjec Geologicznych, Instytut Geologiczny, Warszawa.



SLOWIK, Felicia, dr.

Late changes in the small intestine caused by radiation injury. .  
Magy radiol 12 no.1:36-39 Nr '60.

1. A Debreceni Orvostudományi Egyetem Kóronctani Intézetének.  
(igazgató: Endes, Pongrac, dr. egyetemi tanár) közleménye.  
(RADIATION INJURY case reports)  
(INTESTINE SMALL radiation eff.)

SIMANSZKY, Janos; SLOWIK, Felicia; STIPUIA, Magdolna

Wegener's granulomatosis. Orv. hetil. 101 no.14:489-492 3 Ap '60.

1. Debreceni Orvostudományi Egyetem, Kóronstani Intézet.  
(GRANULOMA)  
(PERIARTERITIS NODOSA)

SLOWIK, Felicia, dr.; CSOKA, Imre, dr.

Data on clinical and patho-anatomical postmortem examination in pemphigus. Borgyogy. vener. szemle 37 no.6:268-271 D '61.

1. A debreceni Orvostudományi Egyetem Kóronctani Intézetének (Igazgató: Endes Pongrac dr. egyetemi tanár) és Borklinikájának (Igazgató: Szodoray Lajos dr. egyetemi tanár) közleménye.

(PEMPHIGUS pathol) (AUTOPSY)

SUMMARY

FRANZOS, Emil, Dr. SZABO, Gyula, Dr. SLOVAK, Felician, Dr. KOLTAN, Janos, Dr. National Neurosurgical Scientific Institute (Orszagos Idegsebészeti Tudomány-  
os Intezet) and Central Army Hospital (Központi Honvéd Kórház).

"Cavernous Hemangioma of Extra- and Intracranial Location (Operated Case  
of a Cavernous Hemangioma at the Base of the Skull)."

Budapest, Magyarorvaszati Szemle, Vol XIV, No 10, Oct 1963, pages 297-305.

Abstract: [Authors' Hungarian summary modified] The case of a 36 year-old  
female patient is described whose cavernous hemangioma, verified by histolo-  
gical examination, extended into the side of the face, the os parietale and  
the base of the skull on the right side. The case can not be classified as  
the Willis syndrome because the changes were localized in the right side  
system of the arteria carotis externa. Two years before, plastic surgery  
was performed on the right side of the face. At the present time, the ex-  
tensive soft tumor, reaching into the intracranial space, was removed from  
the base of the skull. The pathological aspects of the hemangioma caver-  
nosus of the skull in general and the angiographic findings and surgical  
indications of the present case are discussed. 1 Hungarian, 19 Western re-  
ferences.

PASZTOR, Emil, dr.; SZABO, Gyula, dr.; SLOWIK, Felicia, dr.;  
ZOLTAN, Janos, dr.

Extra- and intra-cranially located cavernous hemangioma  
(a case of surgically removed cavernous hemangioma from the  
base of the skull). Ideggyogy. szemle 16 no.10:297-305 0 '63.

1. Az Orszagos Idegsebészeti Tudományos Intezet és a Kozponti  
Honved Korház közleménye.

(HEMANGIOMA, CAVERNOUS) (FACIAL NEOPLASMS)  
(SKULL NEOPLASMS) (PARIETAL BONE)  
(OCCIPITAL BONE) (CEREBRAL ANGIOGRAPHY)  
(NEUROSURGERY) (SURGERY, PLASTIC)  
(TOMOGRAPHY) (PATHOLOGY)

SLAWIK, J.

Some problems of agricultural production in the Siediszczce Village Community. p. 536

HOWE ROLNICTWO (Panstwowe Wydawnictwo Rolnicze i Lesne) Warszawa, Poland  
Vol. 8, no. 11, July 1959

Monthly List of East European Accessions (EEAI) LC, Vol. 8, No. 9, September 1959.  
Uncl.

SLOWIK, Janusz, mgr

Support for rationalizers and inventors. Przegl techn 84 no.16:  
6 21 Ap '63.

KOZNIEWSKA, H.; WISLAWSKI, J; SLOWIK, T.

Epidermoid cyst of the spinal cord. Neur. & c polska 10 no.2:213-217  
Mr-Apr '60.

1. Z Kliniki Neurochirurgii A.M. w Warszawie Kierownik: prof. dr med.  
J.Chorobski.  
(SPINAL CORD neopl)



SLOWIK, Stanislaw

Electrophoretic studies on blood serum proteins in chronic schizophrenia. Neurol. neurochir. psychiat. Pol. 14 no.1:119-126 Ja-F '64.

1. Z Panstwowego Szpitala dla Nerwowo i Psychicznie Chorych w Jaroslawiu (Dyrektor: lek. med. T. Eliazsz).

SLOWIK, Stanislaw

Studies on Akerfeld's test in schizophrenia. Neurol. neurochir. psychiat.  
pol. 12 no.4:563-568 '62.

1. Z Panstw. Szpitala dla Nerwowo i Psychicznie Chorych w Jaroslawiu  
Dyrektor: lek. med. T. Eliaz.  
(SCHIZOPHRENIA) (ANILINE COMPOUNDS)



NIEWIADOMSKA, Maria; SŁOWIK, Tadeusz; STEPIEN, Lucjan; TRZEBICKI, Jacek

A case of cerebral angioma with temporal lobe epilepsy. Neurol. neurochir. psychiat. Pol. 15 no.3:481-484 My-Je '65.

1. Z Oddziału Neurologicznego (Ordynator: doc. dr. I. Wald) i z Pracowni Radiologicznej Szpitala dla Nerwowo i Psychicznie chorych w Pruszkowie (Kierownik: dr. med. P. Kozłowski) i z Zakładu Neurochirurgii Polskiej Akademii Nauk (Kierownik: doc. dr. S. Sierpinski).

SLOWIK, Tadeusz; WARDĘCKA, Krystyna

A case of co-existing cysticercosis of the brain and tuberculous cerebrospinal meningitis. *Neruoł. etc.*, polska 11 no.4:565-568 '61.

1. Z Kliniki Neurochirurgii AM w Warszawie Kierownik: prof. dr med. J. Chorobski Z Kliniki Neurologicznej AM w Warszawie Kierownik: prof. dr med. I. Hausmanowa-Petrusewicz.  
(TUBERCULOSIS MENINGEAL compl) (CYSTICERCOSIS compl)

ARASZKIEWICZ, Zuzanna; SIEMIK, Tadeusz

False coronary syndrome in cerebral tumor. Pol. arch. med. wewn.  
34 no.8:1061-1064 '64.

1. Z Kliniki Chorob Wewnętrznych Instytutu Gruźlicy w Warszawie  
(Kierownik: prof. dr. med. B. Jochweds) i z Kliniki Neurochirurgii  
Akademii Medycznej w Warszawie (Kierownik: prof. dr. med. L.  
Stepien).

WEISS, Marian; SLOWIKOWA, Halina

Reconstructive surgery for irreparable paralysis due to spinal fractures with cord lesions. Chir. narz. ruchu 22 no.4:441-447 1957.

1. Z Kliniki Ortopedy A. M. w Warszawie i ze Szpitala Chirurgii Kostnej w Konstancinie. Kierownik: prof. dr A. Gruca. Konstancin k/Warszawy, Szpital Chirurgii Kostnej. Włodzimierz Ganszer.

(SPINE, fractures

causing spinal cord inj., surg. reconstruction (Pol))

(SPINAL CORD, wds. & inj.

caused by fract. of spine, surg. reconstruction (Pol))

SLOWIKOWSKI, Jan

Epidemiologic picture of the Olesnica district. Przegl. epidem.  
8 no.1:71-72 1954.

1. Z Zakladu Higieny Ogolnej i Spolecznej Akademii Medycznej we  
Wroclawiu.

(COMMUNICABLE DISEASES, epidemiology,  
Poland)



SLOWIKOWSKI, JAN

SLOWIKOWSKI, Jan (adres: Wroclaw, ul. M. Reja 15, m. 7)

Congenital megacolon. Polski przegl. chir. 26 no.3: 237-242 Wr '54.

1. Z II Kliniki Chirurgicznej Akademii Medycznej we Wroclawiu,  
Kierownik: prof. dr W. Bross. (Praca wpłynęła do redakcji dnia  
15.XI.1952)

(MEGACOLON,  
\*congen.)

SLOWIKOWSKI, Jan; KANIOWSKI, Tadeusz

Cavernous angioma of the rib. Polski tygod. lek. 10 no.20:665-670  
16 May '55.

1. Z II Kliniki Chirurgicznej A.M. we Wrocławiu; kierownik: prof.  
dr Wiktor Bross i z Kliniki Radiologicznej A.M. we Wrocławiu;  
kierownik: dr Zbigniew Kubrzakiewicz Wrocław, ul. M. Reja 15/7

(RIBS, neoplasms,  
angioma, cavernous, diag. & ther.)

(ANGIOMA,  
cavernous of rib, diag. & ther.)

BROSS, Wiktor; SLOWIKOWSKI, Jan; NOWICKI, Florian; KEDRA, Mieczyslaw

Stab wounds of the heart. Przegl. lek., Krakow 11 no.3:78-85 Mar 55.

1. Z II klin. chir. A.M. we Wraclawiu, kier. prof. dr. W.Bross.

Z II klin. chor. wewnr. A.M. we Wroclawiu; kier. prof. dr. B.Szczeklik.

(WOUNDS AND INJURIES

stab wds. of heart, surg.)

(HEART, wounds and injuries

stab wds, surg.)

SŁOWIKOWSKI, Jan; MICHEŁDA, Adam; (Wrocław)

Giant tumors of the abdominal cavity. Przegl.lek. Krakow 11  
no.5: 152-155 '55.

1. Z II Kliniki Chirurgicznej A.M. we Wrocławiu. Kierownik:  
Prof. dr W. Bross.  
(ABDOMEN, neoplasms  
giant tumors)

SŁOWIKOWSKI, Jan, Wrocław

Experiences with blood transfusion. Przegl.lek., Krakow 11 no.6:  
182-186 1955.

1. Z Kliniki Chirurgicznej A.M. we Wrocławiu. Kierownik: prof.  
dr. W. Bross.

(BLOOD TRANSFUSION

Practical experience)

SŁOWIKOWSKI, Jan

Osteogenesis imperfecta, osteopetrosis. Chir. narz. ruchu 20 no.1:  
47-55 1955

1. Z II Kliniki Chirurgicznej A.M. we Wrocławiu. Kierownik: prof.  
dr W. Bross.

(OSTEOGENESIS IMPERFECTA,)

MICHEJDA, Adam; SLOWIKOWSKI, Jan

Ostre mleczowe zapalenia otrzewnej (peritonitis chylosa acuta)  
Polski przegl.chir. 27 no.5:461-465 May '55.

1. Z II Kliniki Chirurgicznej A.M. we Wrocławiu. Kierownik: prof.  
dr W. Bross. Wrocław, ul. Smoluchowskiego 52 m 8.  
(PERITONITIS,  
chylous)

SLOWIKOWSKI, Jan

Considerations on the technic of exchange transfusion in newborn infants. Polski przegl. chir. 27 no.6: 513-517 Je '55.

1. Z II Kliniki Chirurgicznej A.M. we Wroclawiu. Kierownik: prof. dr W. Bross. Wroclaw, ul. Mikolaya Reja 15 m. 7.

(ERYTHROBLASTOSIS, FETAL therapy,  
blood transfusion, exchange, technic)

(BLOOD TRANSFUSION,  
exchange in erythroblastosis fetalis, technic)



SLOWIKOWSKI, Jan

Conservative therapy of suppurative mastitis with penicillin and streptomycin. Polski przegl. chir. 28 no.5:465-471 May 56.

1. Z II Kliniki Chirurgicznej A.M. we Wroclawiu, Kierownik: prof. dr. W. Bross, Wroclaw, 2, ul. Mikolaja Reja 15 m. 7.

(MASTITIS, therapy,  
penicillin & streptomycin in suppurative cases (Pol))  
(PENICILLIN, therapeutic use,  
mastitis, suppurative (Pol))  
(STREPTOMYCIN, therapeutic use,  
mastitis, suppurative (Pol))

BROSS, Wiktor; SLOWIKOWSKI, Jan; CISEK, Tomasz; PEIKERT, Eugeniusz

Analysis of 180 cases of cancer of the large intestine and of the rectum. Polski przegl. chir. 28 no.8:753-757 Aug 56.

1. Wroclaw, ul. Curie-Sklodowskiej 66.  
(INTESTINE, LARGE, neoplasms,  
hosp. statist. (Pol))

BROSS, Wiktor; SIOPEK, Stefan; SLOWIKOWSKI, Jan; MORDARSKI, M.; SIEDLECKA, M.;  
KOSMINSKI, Stefan

Preoperative preparation of the large intestine. Polski przegl. chir.  
30 no.5:589-592 May 58.

(INTESTINE, LARGE,

preop. disinfect. (Pol))

(SURGERY, OPERATIVE,

preop. prep. of large intestine (Pol))

BROSS, Wiktor; SIOPEK, Stefan; SLOWIKOWSKI, Jan; MORDARSKI, M.; SIEDLECKA, M.;  
KOZMINSKI, Stefan

New observations on sterilization of large intestinal bacterial  
flora. Polskie tygod. lek. 14 no.1:17-21 5 Jan 59.

1. (Z II Kliniki Chirurgicznej Akad. Med. we Wrocławiu; kierownik:  
prof. dr W. Bross i z Instytutu Immunologii i Terapii Doświadczalnej  
PAN im. Ludwika Hirszfelda we Wrocławiu; dyrektor: prof. dr Stefan  
Siopek). Adres: Wrocław, ul. Curie-Skłodowskiej 66, II Klin. Chirurg.  
A. M.

(COLON, surg.

preop. sterilization of bact. flora in large intestine  
using antibiotics (Pol))

(INTESTINE, LARGE, microbiol.

bact. flora, preop. sterilization using antibiotics (Pol))

KOZMINSKI, Stefan; KAHIOWSKI, Tadeusz; SLOWIKOWSKI, Jan

Diagnostic value of arteriography of the peripheral vessels in the light of own experiences. Polski przezl.radiol. 23 no.6: 427-438 N-D '59.

1. Z II Kliniki Chirurgicznej A.M. we Wroclawiu Kierownik: prof. dr W. Bross i z Kliniki Radiologicznej A.M. we Wroclawiu Kierownik: doc. dr Z. Kubrakiewicz.  
(ANGIOGRAPHY)

SŁOWIKOWSKI, Jan

Effect of chlorpromazine on post-transfusion shock in dogs.  
Postepy hig. i med. dosw. 15 no.1:55-91 '61.

1. Z II Kliniki Chirurgicznej A.M. we Wrocławiu Kierownik: prof.  
dr W. Bross. (CHLORPROMAZINE pharmacol) (BLOOD TRANSFUSION exper)  
(SHOCK exper)

SLOWIKOWSKI, Jan

Clinical studies on the effect of chlorpromazine on post-transfusion shock. Postepy hig. i med. dosw. 15 no.2:201-220 '61.

1. Z II Kliniki Chirurgicznej AM we Wroclawiu Kierownik: prof.  
dr W. Bross.  
(CHLORPROMAZINE ther) (BLOOD TRANSFUSION compl)

SLOWIKOWSKI, Jan

Surgical treatment of portal hypertension in children and adolescents.  
Polski tygod. lek. 16 no.32:1236-1244 7 Ag '61.

1. Z II Kliniki Chirurgicznej A.M. we Wrocławiu; dyrektor: prof. dr  
Wiktor Bross.

(HYPERTENSION PORTAL surg)



BROSS, Wiktor; SLOWIKOWSKI, Jan

Surgical treatment of bleeding esophageal varices after splenectomy.  
Polski przeł. chir. 33 no.5:455-459 '61.

1. Z II Kliniki Chirurgicznej AM we Wrocławiu Kierownik: prof. dr  
W. Bross.

(SPLEEN surg) (ESOPHAGEAL VARICES surg)

GRUSZKA, Stanislaw; SLOWIKOWSKI, Jan

Adrenalectomy in the treatment of Achard-Thiers syndrome. Endokr. Pol.  
13 no.2:209-216 '62.

1. II Klinika Chorob Wewnętrznych Akademii Medycznej we Wrocławiu  
Kierownik: Prof. dr A. Falkiewicz II Klinika Chirurgiczna Akademii  
Medycznej we Wrocławiu Kierownik: Prof. dr W. Bross.

(DIABETES MELLITUS surg) (ADRENAL CORTEX dis)  
(HYPERTRICHOSIS surg) (ADRENALECTOMY)

SLOWIKOWSKI, Jan

Prevention and therapy of postoperative hepatic coma. Pol. tyg. lek.  
17 no.21:834-838 21 My '62.

1. Z II Kliniki Chirurgicznej AM we Wroclawiu; kierownik Kliniki:  
prof. dr Wiktor Bross.

(HEPATIC COMA prev & control)  
(SURGERY OPERATIVE compl)

SLOWIKOWSKI, Jan; CISEK, Tomasz; BROSS, Tadeusz

Treatment of esophageal achalasia with modified Heller's method.  
Pol. tyg. lek. 17 no. 35:1363-1366 27 Ag '62.

1. Z II Kliniki Chirurgicznej AM we Wrocławiu; kierownik: prof. dr  
Wiktor Bross.

(CARDIOSPASM)

SLOWIKOWSKI, Jan

Diagnostic value of spleno-porto-hepatometry in portal hypertension.  
Pol. przegl. chir. 34 no.1:15-24 '62.

1. Z II Kliniki Chirurgicznej AM we Wroclawiu Kierownik: prof. dr  
W. Bross.

(HYPERTENSION PORTAL diag)

SLOWIKOWSKI, Jan

Diagnostic value of splenoportography in the light of our experiences.  
Pol. przegl. chir. 34 no.1:25-36 '62.

1. Z II Kliniki Chirurgicznej AM we Wroclawiu Kierownik: prof. dr  
W. Bross. (ANGIOGRAPHY) (HYPERTENSION PORTAL radiog)

BROSS, Wiktor; KOCZOROWSKI, Stefan; BADER, Otton; BROSS, Tadeusz;  
SAMSONOWICZ, Z.; MASIAK, M.; WRZLEWICZ, Wladyslaw; SLOWIKOWSKI,  
Jan

Our observations on extracorporeal circulation with the use of the  
Kay-Cross apparatus. Pol. przegl. chir. 34 no.7:693-705 '62.

1. Z II Kliniki Chirurgicznej AM we Wroclawiu Kierownik: prof.  
dr W. Bross.

(HEART MECHANICAL)

POLAND

BROSS, Wiktor and SLOWIKOWSKI, Jan, Second Surgical Clinic (II Klinika Chirurgiczna), Medical Academy (Akademia Medyczna) in Wroclaw (Director: Prof. Dr. Wiktor BROSS)

"Clinical Observations on the Use of Long-Acting Sulphonamides (Madribron)."

Warsaw, Polski Tygodnik Lekarski, Vol 18, No 35, 26 Aug 63, pp 1303-1306

Abstract: [Authors' English summary modified] Authors observed the effect of sulphamedioxine on 67 patients with chronic infections of the gall bladder and biliary tract, with infections of the respiratory tract and nasolaryngeal cavity, and with cystitis or pyelitis, as well as a prophylactic measure in others. Good results were obtained in 86% of the cases, and even though extent of study is too small for definite statement, long-acting sulphonamides are likely to replace antibiotics in mild infections and in aseptic operations in the opinion of the authors. 14 references: one Soviet, 2 each German and Swiss, and 9 Polish.

1/1



BROSS, Wiktor; KACZOROWSKI, Stefan; BADER, Otton; BROSS, Tadeusz;  
SAMSONOWICZ, Zdzislaw; MASIAK, Michal; WREZLEWICZ, Wladyslaw;  
SLOWIKOWSKI, Jan

Behavior of acid-base equilibrium in extracorporeal circulation  
under normal temperature. Pol. arch. med. wewnet. 33 no.10:  
1141-1140 '63.

1. Z II Kliniki Chirurgicznej AM we Wroclawiu Kierownik: prof.  
dr med. W. Bross.  
(HEART, MECHANICAL) (ACIDOSIS)  
(BICARBONATES)

SLOWIKOWSKI, Jan

Role of the measurement of the width of the common bile duct  
in biliary surgery. Pol. przegl. chir. 35 no.7/8:781-783 '63.

I. Z II Kliniki Chirurgicznej AM we Wrocławiu Kierownik: prof.  
dr W. Bross.

(COMMON BILE DUCT) (ANATOMY)  
(CHOLANGIOGRAPHY) (CHOLECYSTECTOMY)  
(CHOLELITHIASIS)

BROSS, Wiktor; CISEK, Tomasz; WREZLEWICZ, Wladyslaw; BADER, Otton;  
SLOWIKOWSKI, Jan.

Surgical treatment of mechanical jaundice. Pol. przegl. chir.  
35 no.7/8:842-844 '63.

1. Z II Kliniki Chirurgicznej AM we Wroclawiu Kierownik:  
prof. dr W. Bross.  
(JAUNDICE, OBSTRUCTIVE) (SURGERY, OPERATIVE)

BROSS, Wiktor; SLOWIKOWSKI, Jan

Late complications following excision of an ilio-femoral  
arterial aneurysm. Pol. przegl. chir. 35 no.10/11:1115-1118  
'63.

1. Z. II Kliniki Chirurgicznej AM we Wroclawiu Kierownik: prof.  
dr W. Bross.

(ILIAC ARTERY) (FEMORAL ARTERY)  
(ANEURYSM) (VASCULAR SURGERY)  
(POSTOPERATIVE COMPLICATIONS)  
(ISCHEMIA) (WOUNDS, GUNSHOT)