

POL/44-59-12-3/36

1(5)

AUTHOR:

Sadowiczenko, P., Lt. Colonel, Pilot 1st Class

TITLE:

The Problem of Searching in Modern Aviation

PERIODICAL:

Wojskowy przeglad lotniczy, 1959, Nr 12, pp 6-11 (POLAND)

ABSTRACT:

The author defines searching in aviation as systematic space scanning in flight, body and head shifting, and points out that proper searching is important in flight safety. He implies that obsolete methods in "search training" have to be modified because they do not ensure sufficient safety under present flight conditions in the "overcrowded" air. Two hypothetical examples of aircraft collisions are described. A jet aircraft and a banking piston engine aircraft collide although both pilots carried out correct "searching" according to the conventional scanning sequence (the "eight" system); again a jet enters a banking maneuver and cuts the path of the jet which approached at 2,000 km per/h. Since the visual detection range does not exceed 5-7 km, the jet pilot with nothing in view ahead might have been scanning the stern backboard hemisphere within his routine

Card 1/3

The Problem of Searching in Modern Aviation

POL/44-59-12-3/36

search procedure, glancing at the instruments and going on to scan the bow back-board hemisphere closely before collision with the piston engine aircraft which banked in from starboard. The second hypothetical collision involves two jet aircraft, one in a banking maneuver. In both cases the author maintains that the conventional "searching" system is wrong for super-sonic aircraft because the low visual detection range does not ensure a sufficient period of time for the pilot to respond to a sudden obstacle in the path of his aircraft. Flight experience on jet aircraft shows that probably the most useful "searching" system will be conical scanning in the flight direction. The best watching angle is 5 degrees, the maximum scanning angle 40-45 degrees. In order to examine space, 50-60 degrees starboard and backboard of the flight path, the pilot slightly moves his head and shifts the watching angle. The conical "cross section" in degrees must be so selected as to ensure an early enough detection of aircraft ahead while scanning the space starboard and backboard of the flight path and immediately sighting the flight direction. Apart from high speeds, "searching" is obstructed by canopy de-

Card 2/3

OSINSKA, Barbara; SALOMNIK, Jolina

A case of pulmonary mucoviscidosis in an adult. Gruzlica 32 no.6:
537-540 Ja '64.

1. Z Oddziału Szpitalnego Wojewodzkiej Przychodni Przeciwguzliczej w
Białymstoku (Kierownik: lek. med. J. Sadownik).

SADOWNIK, Janusz, mgr inż.

A device for producing cyclic pressure changes. Pomiary
8 no.10:464-465 0 '62.

1. Centralne Laboratorium Aparatów Pomiarowych i Optyki,
Warszawa.

SADOWNIK, Janina; GRANDA, Jan; WILCZYNSKI, Mikolaj

Examination of man and animals for tuberculosis in the Bialystok Region in 1960 and 1962. I. Gruzlica 31 no.6:738-741
Je'63

1. Wojewodzka Przychodnia Przeciwgruzlicza i Zaklad Higieny
Weterynaryjnej, Bialystok.

*

SADOWNIK T.

Geodezja (Geodesy) by T. Sadownik. Reported in New Books (Nowe Książki.)
March 1, 1956.

LESZCZAK, Stanislaw. SADOWNIK, Tadeusz

Practical aspect of refractory masses on water glass in precise metallurgy. Problemy proj hut maszyn II no.11:354-356 N 163.

1. Prozamet, Lodz.

STACHURSKA, Anna; SADOWSKA, Anna

A few remarks concerning the production of durable comparative preparations from pollen and spores of contemporary plants. Wiadom botan 6 no.3:257-260 '62.

1. Zaklad Paleobotaniki, Uniwersytet, Wroclaw.

245200

35852
S/044/62/000/002/040/C92
C111/C444

AUTHOR: Sadowska, D.
 TITLE: On an integro-differential equation of the theory of heat conduction
 PERIODICAL: Referativnyy zhurnal, Matematika, no. 2, 1962, 73, abstract 2B318. ("Ann. polon. math.", 1959, 7, no. 1, 81-92)

TEXT: Let Ω be a bounded domain of the three-dimensional Euclidean space, the boundary S of which is a Lyapunov surface. The continuous function $f(A, u)$, where $A \in \Omega$ and $|u| \leq R$, and the continuous function $F(A, B, u)$, where $A, B \in \Omega + S$, $|u| \leq R$, are assumed to satisfy the Hölder condition with respect to A (in Ω , respectively in $\Omega + S$) and the Lipschitz-condition with respect to u . One proves the existence of a solution $T(A)$ ($A \in \Omega$) of the equation

$$\Delta T = f[A, T(A)] + \int_{\Omega} \frac{F[A, B, T(B)]}{r_{AB}^2} d\tau_B$$

the boundary values of which are zero on S . For the proof one reduces Card 1/2

SADOWSKA, D. (Lodz)

On a problem of limits in the theory of analytic functions. Annales
pol. math 8 no.2:193-200 '60. (EEAI 10:1)
(Functions) (Calculus)

SADOWSKA, D. (Lodz)

A problem of limits with tangential derivatives for the elliptic equation whose coefficients depend on an unknown function. In French. Annales pol math 10 no.1:7-33 '61. (EEAI 10:8)
(Differential equations) (Functions)

S/044/62/000/009/020/069
A060/A000

AUTHOR: Sadowska, D.

TITLE: The Cauchy problem for a parabolic system whose coefficients depend upon unknown functions

PERIODICAL: Referativnyy zhurnal, Matematika, no. 9, 1962, 52, abstract 9B249 ("Bull. Acad. polon. sci. Sér. sci. math., astron. et phys.", 1961, v. 9, no. 11, 811 - 816; French; Russian summary)

TEXT: The paper considers the solution of the Cauchy problem for the quasilinear parabolic system

$$\begin{aligned}
& 0 \leq k_1 + \dots + k_n \leq M \\
& \sum_{1 \leq j \leq n} A_{\alpha j}^{k_1 \dots k_n} (x, t, u) \frac{\partial^{k_1 + \dots + k_n} u}{\partial x_1^{k_1} \dots \partial x_n^{k_n}} - \frac{\partial u_\alpha}{\partial t} = 0, \quad (1) \\
& \alpha = 1, 2, \dots, N
\end{aligned}$$

Card 1/4

The Cauchy problem for a parabolic system

S/044/62/000/009/020/069
A060/A000

with the initial conditions $\lim_{t \rightarrow 0} u_j(X, t) = f_j(X), j = 1, 2, \dots, N, \quad (2)$

where $X = (x_1, \dots, x_n) \in E, 0 < t < T$ and $u = (u_1, \dots, u_N)$. The following assumptions are made: I. The coefficients $A_{\alpha_j}^{k_1 \dots k_n}(X, t, u)$ are functions bounded in the domain $X \in E, 0 \leq t \leq T, -\infty < u_j < +\infty, j = 1, 2, \dots, N$ (where E is an n -dimensional Euclidean space), satisfying Hoelder conditions of the form

$$\left| A_{\alpha_j}^{k_1 \dots k_n}(X, t, u) - A_{\alpha_j}^{k_1 \dots k_n}(X', t, u') \right| < k_A \left\{ |XX'|^h + |t - t'|^{h'} + \right. \\ \left. + t^r \exp[-b|XX_0|] \sum_{j=1}^N |u_j - u'_j|^{h''} \right\},$$

provided $k_1 + \dots + k_n = M$ and

$$\left| A_{\alpha_j}^{k_1 \dots k_n}(X, t, u) - A_{\alpha_j}^{k_1 \dots k_n}(X', t', u') \right| <$$

Card 2/4

The Cauchy problem for a parabolic system

S/044/62/000/009/020/069
A060/A000

$$< k'_A \left\{ |XX'|^h + t^\gamma \exp \{-b|XX_0|\} \sum_{j=1}^N |u_j - u'_j|^{h''} \right\},$$

provided $0 \leq k_1 + \dots + k_n < M$ ($\alpha, j = 1, 2, \dots, N$), where h, h', h'', γ are positive constants less than unity, for which

$$\max(h, h') < h'' \leq 1, \quad \frac{h'}{h''} < \min\left(\frac{n}{M}, 1\right),$$

$$\max\left(\frac{h'}{h''}, 1 - \frac{h^*}{M}\right) < \gamma < h'' \leq 1, \quad h^* = \min(h, Mh')$$

and k_A, k'_A are positive constants. The coefficients $A_{\alpha j}^{k_1 \dots k_n}$ for $0 \leq k_1 + \dots + k_n < M$ are uniformly continuous with respect to t . II. The system (1) is parabolic in the sense of Petrovskiy (M is even). III. The initial functions $f_\alpha(X)$ are continuous in E and satisfy the inequalities

$$|f_\alpha(X)| \leq a_f \exp[b|XX_0|],$$

Card 3/4

The Cauchy problem for a parabolic system

S/044/62/000/009/020/069
A060/A000

where $a_f > 0$ are constants. Theorem: If the conditions I - III are fulfilled and the constants a_f or T are sufficiently small, then there exists at least one solution $(u_1(X, t), \dots, u_N(X, t))$ of the Cauchy problem (1), (2). ✓

L.I. Kamynin

[Abstracter's note: Complete translation]

Card 4/4

SADOWSKA, Danuta

Continuity of tangential derivatives of the potential of a single layer for a parabolic equation with coefficients depending on a parameter. *Matematyka Warszawa* Pol no.2:85-98 '64.

1. Department of Mathematics "A", Technical University, Warsaw.

OTTO, Edward, prof. dr.; WOLSKA-BOCHENEK, Janina, prof. dr.; SADOWSKA,
Danuta, doc. dr.; ODERFELD, Jan, prof. dr.; BORSUK, Karol, prof.
dr.; RYTEL, Zdzislaw, prof. dr.; PIATKIEWICZ, Alesky, prof. dr.;
LEITNER, Roman, prof. dr.; ZAKOWSKI, Wojciech, doc. dr.;
BIENKOWSKA, dr.

Professor Witold Pogorzelski; obituaries. Matematyka Warszawa
Pol no.2:113-136 '64

SADOWSKA, Hanna

Biopsy of the kidney. *Polskie arch. med. wewn.* 31 no.12:1617-1633
'61.

1. Z IV Zakładu Chorob Wewn. Studium Doskonalenia Lekarzy AM w
Warszawie Kierownik: prof. dr nauk med. W.Orlowski.
(KIDNEYS pathol) (BIOPSY)

RUDZKI, Edward; JAKUBOWICZ, Kazimierz; SADOWSKA, Hanna; KWIATKOWSKA, Alicja

Determination of late allergy to streptococci in vitro. *Wed. dosw. mikrobiol.* 16 no.2:73-78 '62.

1. Z Kliniki Dermatologicznej Akademii Medycznej w Warszawie (Kierownik: prof. dr. S. Jablenska).

SADOWSKA, Jadwiga

Scientific aspects of physical education in schools; an international seminar on physical education, Warsaw, September 5-6, 1961.
Nauka polska 10 no.3:130-134 My-Je '62.

1. Instytut Naukowy Kultury Fizycznej, Warszawa.

SADOWSKA, Maria, lek.

Effect of ACTH therapy of rheumatic diseases. Postepy reumat. no.1:
137-153 1954.

1. Z Panstwowego Instytutu Reumatologicznego Dyrektor: prof. dr B.
Reicher.

(ACTH, therapeutic use,
rheum.)

(RHEUMATISM, therapy,
ACTH)

DUNIN-HORKAWICZ, H.; KRAJ-FRANCOWA, I.; SADOWSKA, M.

Role of bacterium coli in etiology of infantile diarrhea. *Pediat. postka* 30 no.3:217-220 Mr '55.

1. Z Zakladu Bakteriologii A.M. w Lodzi Kierownik: prof. dr. med Z Szymanowski, i z II Kliniki Chorob Dzieciacych, A.M. w Lodzi, Kierownik: prof. dr med. Fr. Redlich; Lodz, Nowotki 137, Zaklad Bakteriologii A.M.

(DIARRHEA, bacteriology

E. coli, etiol. role, in inf.)

(ESCHERICHIA, COLI, infections

diarrhea in inf.)

DUNIN-HORKAWICZOWA, H., KRAJ-FRANCOWA, I. SADOWSKA, M.

Epidemic of infantile diarrhea caused by bacteria coli beta type
in two nurseries. *Pediat.polska* 30 no.3:271-282 Mr '55.

I. Z II Kliniki Chorob Dzieci A.M. w Lodzi, Kierownik: prof. dr
med. Fr. Redlich, i Zakladu Bakteriologii A.M. w Lodzi, Kierownik:
prof. dr med. Z. Szymanowski, Lodz, Nowotki 137, Zaklad Bakteriologii
A.M.

(DIARRHEA, bacteriology

E. Coli, serol. beta type, epidemic in inf.)

(ESCHERICHIA COLI, infections

diarrhea, caused by serol. type beta, in inf.)

SADOWSKA, Maria

Volkman's contracture. Postepy reumat. no.2:199-202
1956.

1. Z Panstwowego Instytutu Reumatologicznego w Warszawie

Dyrektor: prof. dr. E. Reicher.

(VOLKMANN'S CONTRACTURE, compl.

rheum. arthritis (Pol))

(ARTHRITIS, RHEUMATOID, compl.

Volkman's contracture (Pol))

PAGOWSKA-WAWRZYNSKA, Jadwiga; SADOWSKA, Maria

Fragilitas ossium. Polskie arch. med. wewn. 26 no.5:
789-794 1956.

l. Z Panstwowego Inst. Reumatol. w Warszawie Dyrektor:
prof. dr. med. E. Reicher, Warszawa, ul. Marszalkowska 18.
(OSTEOGENESIS IMPERFECTA, case reports,
(Pol))

SADOWSKA, M.
SADOWSKA, M.

Uric acid level in the blood of rheumatic patients. Postepy reumat.
no.3:57-66 1957.

1. Z Instytutu Reumatologicznego w Warszawie. Dyrektor: prof. dr
El Reicher.

(RHEUMATISM, blood in
uric acid, in various rheum. dis. (Pol))

(URIC ACID, in blood
in rheum. dis. (Pol))

SADOWSKA, M

DUNIN-HORKAWICZOWA, H.; KRAJ-FRANCOWA, I.; SADOWSKA, M.

Importance of early determination of antibiotic sensitivity in bacterial flora of alimentary canal in therapy of infantile diarrhea. *Pediat. polska* 32 no.2:143-149 Feb 57.

1. Z II Kliniki Chorob Dzieci A.M. w Lodzi Kierownik: prof. dr. med. Fr. Redlich z Zakladu Bakteriologii A.M. w Lodzi Kierownik: prof. dr. med. Z. Szymanowski. Adres: Lodz, ul. Armii Czerwonej 15.

(DIARRHEA, in inf. & child
ther., antibiotics, importance of early determ. of
bact. sensitivity (Pol))
(ANTIBIOTICS, ther. use
diarrhea in child, importance of early determ. of bact.
sensitivity (Pol))

577 DOLSAH, 7/7
DUNIN-HORKAWICZ, H.; KRAJ-FRANCOWA, I.; SADOWSKA, M.

The in vivo & in vitro effects of antibiotics on α - & β -types of Escherichia coli in cases of infantile diarrhea. *Pediat. polska* 32 no.12:1319-1327 Dec 57.

1. Z Zakladu Bakteriologii A. M. w Lodzi. Kierownik: prof. Z. Szymanski i z II Kliniki Chorob Dzieci A. M. w Lodzi. Kierownik: prof. Fr. Redlich.
(ESCHERICHIA COLI, infections
diarrhea in child., resist. to antibiotics (Pol))
(DIARRHEA, in inf. & child
caused by E. coli, resist. to antibiotics (Pol))
(ANTIBIOTICS, eff.
on E. coli, resist. (Pol))

POLAND

DUNIN-HORKAWICZ, Helena, MALECKA, Irena, and SADOWSKA, Maria, Department of Bacteriology (Zaklad Bakteriologii) (Director: Docont, Dr. med. A. GANCZARSKI) and Chair of Pediatrics (Katedra Pediatrii) (Director: Prof., Dr. med. E. REDLECH), AM [Akademia Medyczna, Medical Academy] in Lodz.

"Serologic Reactions in Infant-Diarrhea Caused by E. Coli Type Alpha and Beta."

Warsaw, Medycyna Doswiadczalna i Mikrobiologia, Vol 15, No 2, 63, pp 159-166.

Abstract: [Authors' English summary modified] Tests for E. coli in the stool and for specific serum antibodies in 160 cases of infant-diarrhea lead the authors to the conclusion that these tests can be used for diagnosis, that serological tests are more reliable than the bacteriological ones, and that the passive hemagglutination and indirect hemolysis tests are sensitive enough to be considered reliable. The 43 cited references include one Russian, about 15 Polish, and the others Western.

1/1

DUNIN-HORKAWICZ, Helena; MALECKA, Irena; SADOWSKA, Maria

Serological reactions in infantile diarrhea caused by strains of *Escherichia coli* types alpha and beta. (The reaction of bacterial agglutination, passive hemagglutination and intermediate hemolysis). *Med. dosw. mikrobiol.* 15 no.2:159-166 '63.

1. Z Zakladu Bakteriologii AM w Lodzi Kierownik: doc. dr med. A. Ganczarski i z Katedry Pediatrii Kierownik: prof. dr med. E. Redlich.

(DIARRHEA, INFANTILE)
(ESCHERICHIA COLI INFECTIONS)
(AGGLUTINATION) (GEMOLYSIS)

SADOWSKA, Maria; SEYFRIED, Andrzej

Pathomechanics of lower extremities in the rehabilitation of patients with chronic rheumatism. Reumatologia (Warsz.) 2 no.1:47-54 '64.

1. Z II Oddziału Reumatologicznego Instytutu Reumatologicznego (Kierownik: dr med. W. Bruhl) z Zakładu Rehabilitacji (Kierownik: dr med. A. Seyfried i Dyrektor Instytutu: dr med. W. Bruhl).

SADOWSKA, R.

H-28

COUNTRY : Poland

CATEGORY :

ABS. JOUR. : RZKhim., No. 1959, No. 73075

AUTHOR : Maciejczyk, J.; Sadowska, R.

INST. :

TITLE : The Freezing of Tunny at Sea

ORIG. PUB. : Gospod. rybna, 1959, 11, No 2, 17-19

ABSTRACT : No abstract.

CARD: 1/1

P/014/62/041/001/004/004
D204/D304

AUTHORS: Sadowska, Wanda, Zakrzewski, Lech, and Fejgin, Jerzy

TITLE: Stabilization of polyformaldehyde (PFA), Part I.

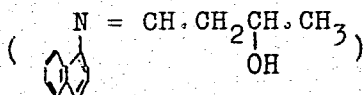
PERIODICAL: Przemysł chemiczny, v. 41, no. 1, 1962, 40 - 43

TEXT: The object of this work was to compare the effect of a number of anti-oxidants on preventing the decomposition of PFA. 23 Commercial anti-oxidants, chiefly amines and phenols, were tried on acetylated PFA, by measuring (1) the thermal degradation coefficient, k , defined as the percentage loss in weight per minute on heating at 210°C and (2) the reduced viscosity, at 140°C. Ubbelohde's viscometer was employed for the latter tests, on solutions containing 0.5 g PFA in 100 ml of solvent (dimethyl formamide + 0.5 % diphenylamine). Measured quantities of stabilizers were added to the PFA which was then treated according to ASTM D 1238-52 T and tested as above. It was found that the most effective stabilizers were the aryl derivatives of naphthylamine and p-diphenyl diamine and several alkylated phenols. Organic sulphides showed no stabili-

Card 1/2

Stabilization of polyformaldehyde ... P/014/62/041/001/004/004
D204/D304

zing effects. Additional investigations, using the most promising stabilizers at 210°C, showed that the optimum concentrations were: anti-oxidant 4010 - 0.5 %, Nonox WSP - 1.0 %, anti-oxidant AH - 0.25 %, Topanol A - 2.0 %, Nonox EX - 2.0 %, Age Rite Resin D - 0.5%. Antioxidant AH ✓



is therefore thought to be the best. Further research on the stabilization of PFA will be carried out using mixtures of anti-oxidants and polyamides and determining the induction period before decomposition. There are 5 tables and 16 references: 3 Soviet-bloc and 13 non-Soviet-bloc. The 4 most recent references to the English-language publications read as follows: U.S. Patent 2,893,972 (1959) U.S. Pat. 2,936,298 (1960); Brit.Pat. 835,841 (1960); Brit.Pat. 854,278 (1960).

ASSOCIATION: Instytut tworzyw sztucznych (Synthetic Materials Institute)

Card 2/2

DEMBINSKI, Wiktor; SADOWSKA, Zofia

Analysis of Polish-made knotless stylon nettings produced by the knitting method. Rocznik nauki rolniczo-zootechnicznej 84 no.2:391-412 '64.

Preliminary evaluation of stylon knitted netting. Ibid.:413-430

1. Department of Fishing Techniques of the Institute of Inland Water Fisheries, Olsztyn.

SADOWSKA-WROBLEWSKA, Maria

Changes in internal organs in rheumatoid arthritis. (According to clinical manifestations). Reum. pol. 4:47-64 '61.

1. Z Instytutu Reumatologii w Warszawie. Dyrektor: prof. dr El. Reicher.
(ARTHRITIS RHEUMATOID) (GASTROENTEROLOGY)
(CARDIOVASCULAR DISEASES) (UROLOGY) (RESPIRATORY DISEASES)

SADOWSKA-WROBLEWSKA, Maria

Therapeutic rehabilitation in flexion contractures of the knee
in rheumatic arthritis. Reumatologia (Warsz.) 3 no.2:93-101 '65.

1. 2. Pododdziału Rehabilitacji Instytutu Reumatologii (Kierownik:
dr. M. Sadowska-Wroblewska; Dyrektor Instytutu: dr. med. W. Brühl).

SADUWSKI, A.

Piedel T., Sadowski A. Comparison of the Electro-Contact Method of Sharpening Carbide Tipped Tools with Grinding after Preheating.

Porównanie ostrzenia płytek ze spiekanych węglików metodą elektrokontaktową z metodą szlifowania po uprzednim podgrzaniu". (Prace Gl. Inst. Mechan. No. 2), Warszawa, 1950, Gl. Inst. Mechan., 6 pp., 12 figs., 2 tabs.

Hardness of sintered carbides as a function of temperature. Grinding of sintered carbide tools after preheating. Electro-contact grinding. Comparison and analysis of results of tool grinding by the two methods. The method of hot grinding of sintered carbide tools is recommended for grinding of larger series of used cutting tools with broken cutting edges and qualified by usual standard or scrap and rejected tools. The electro-contact method should be recommended for grinding of sintered carbide tipped tools. One of the advantages of this method is the considerable savings on carborundum grinding wheels of the grid size below 150. This method is also useful for sharpening profile edged tools because it renders possible the making of metallic grinding wheels of desired profiles. The electro-contact method may also be used for cutting sintered carbide plates.

4

JP

SADOWSKI, ANDRZEJ

Sadowski, Andrzej. Wzorce gladkosci powierzchni. Warszawa, Panstwowe
Wydawn. Techniczne, 1952. 56 p. (Patterns of surface smoothness. Illus.)

SO: Monthly list of East European Accessions, LC, Vol. 3, No. 1, Jan. 1954, Uncl.

SADOWSKI, A.

"The smoothness of cutters in machine tools." p. 3
(Mechanik, Vol 25 No 1 Jan 53 Warszawa)

SO: Monthly List of East European Accessions, Vol 2 No 9 Library of Congress Sept 53 Uncl

SADOWSKI, A.

"Standards of surface smoothness." p. 95
(Mechanik, Vol 25 No 2 Feb 53 Warszawa)

SO: Monthly List of East European Accessions, Vol 2 No 9 Library of Congress Sept 53 Uncl

SAICCHI, A.

"Introduction of a Unit for Measuring Surface Finish in the Motor Industry",
P. 303, (TECHNICA MOTORYSA YJNA, Vol. 4, No. 10, October 1954, Warsaw, Poland)

SO: Monthly List of East European Accessions (UEAL), LC, Vol. 4, No. 3,
March 1955, Incl.

SADOWSKI, A.

SADOWSKI, A. Control of the smoothness of surface in the machine
manufacturing industry. p. 442. Vol. 27, no. 11/12, Nov./Dec. 1954.
MECHANIK. Warszawa Poland

SOURCE: East European Accessions List (EEAL) LC Vol. 5, No. 6, June 1956

SADOWSKI, A.

Technical control. p. 301.
Vol 11, no. 9, Sept, 1955. PRZEGLAD GEODEZYJNY. Warsaw, Poland.

So: Eastern European Accession. Vol 5, no. 4, April 1956

SADOWSKI, A.

3
2

Distr: /E2c/AE2b(w)

5509

681.2.089:621.9

* Sadowski A. Testing Cutting Tools. 18

"Sprawdzanie narzędzi skrawających". Warszawa, 1958, PWT, 16°

330 pp., 223 figs. 73 tabs

Deals with testing of materials used for the production of tools, with tool measuring devices, and with methods of testing tools, reamers, milling cutters and abrading tools.

2W
//

em

SADOWSKI, A.

The control of cutting tools. p. 228.
(MECHANIK. Poland. Vol. 29, no. 6, June 1956.)

SO: Monthly List of East European Accession (EEAL) LC, Vol. 6, no. 7, July 1957. Uncl.

SADOWSKI, A.

TECHNOLOGY

PERIODICAL: POMIARY, AUTOMATYKA, KONTROLA. VOL.4, no. 8, Aug. 1958.

SADOWSKI, A. A NEW PRODUCTION METHOD OF SURFACE-FINISH GAGES. P. 371.

Monthly List of East European Accessions (EEA) LC Vol. 8, no. 4

April 1959, Unclass.

SADOWSKI, A.

TECHNOLOGY

PERIODICAL: MECHANIK, Vol. 31, no. 7, July 1958.

SADOWSKI, A. Surface smoothness of measuring instruments and aids. p. 352.

Monthly List of East European Accessions (EEAI) IC Vol. 8, No. 4
April, 1959, Unclass.

SADOWSKI, Andrzej, doc. dr inż.

Measuring range and accuracy of interferometric measurements of surface topography in cases of application of replicas and immersion. *Pomiary* 7 no.8:318-319 Ag '61.

1. Instytut Obrobki Skrawaniem, Warszawa.

SADOWSKI, Andrzej

Surface finish masters; type WG-4. Mechanik 35 no.6:356 Je
'62.

SADOWSKI, Andrzej

Bevel protractor for knives; type KN-3. Mechanik 35 no.6:356
Je '62.

SADOWSKI, Andrzej

Research on surfaces of major heterogeneity of roughness and methods
of roughness measurements of such surfaces. Mechanik 35 no.11:635-
636 N '62.

P/034/63/000/002/002/004
D291/D308

AUTHOR: Sadowski, Andrzej, Docent, Doctor of Engineering

TITLE: Estimation of errors of measurement by distinguishing individual component errors

PERIODICAL: Pomiary. Automatyka. Kontrola, no. 2, 1963, 54-56

TEXT: The present work is concerned with an analytical experimental method for the determination of the expected or actual errors, and aims at a systematization of individual component errors. The error of a measurement may be resolved into (a) avoidable errors (incorrect choice of working parameters), (b) unavoidable errors which may be allowed for, and (c) unavoidable errors generally of unknown origin. A more practical differentiation of individual component errors suggested by the author is such that: (A) an individual component error (ICE) is due to an easily deducible cause or causes, (B) the causes of ICE of one group are localized in one group of factors connected with the instrument, method, or observer, (C) ICE's of a given group are wholly systematic or wholly random, (D)

Card 1/2

Estimation of errors...

P/034/63/000/002/002/004
D291/D308

ICE's of a given group are purely (a), (b), or (c), (E) ICE's of a given group can be determined, either experimentally or theoretically. Full compliance with conditions (A - E) is not always realizable, but these conditions are sufficiently satisfied by the following classification: (1) Inherent errors of the measuring instrument; (2) Systematic errors characteristic of the measuring method; (3) Systematic errors due to specific external conditions and properties of the measured object; (4) Mean square error of the measuring instrument; (5) Observation errors not covered by point (4). The above five groups are described in some detail and discussed.

Card 2/2

SADOWSKI, Andrzej

Errors in indicator measuring equipment used for testing
the geometric accuracy of machine tools. Inst obrobki
skraw prace no.17:1-27 '63.

SADOVSKI, Andzhey [Sadowski, Andrzej], prof.

Investigating the methods for checking the geometrical precision
of machine tools. Stan. i instr. 35 no.7:7-8 JI '64.

(MIRA 17:10)

1. Institut obrabotki metallow rezaniyem, Pol'skaya Narodnaya
Respublika.

BRZEZINSKA, Zofia; SADOWSKI, Bogdan; TRACZYK, Wladyslaw

Effect of biologically-active compounds on contractions of the rectus abdominis produced with acetylcholine in the frog. Acta physiol. pol. 14 no.2:171-182 '63.

1. Z Zakladu Fizjologii PAN w Warszawie Kierownik: prof. dr Fr. Czubalski.

(ACETYLCHOLINE) (ATROPINE) (MUSCLES)
(NOREPINEPHRINE) (PHARMACOLOGY) (EPINEPHRINE)
(PHYSOSTIGMINE) (SEROTONIN) (NEOSTIGMINE)
(ADENOSINE TRIPHOSPHATE) (AMINO BUTYRIC ACID)
(GLUTAMATES) (ALANINE) (NICOTINE)
(CHOLINESTERASE) (ENZYME INHIBITORS)
(GALLAMINE TRIETHIODIDE) (BRAIN)
(TISSUE EXTRACTS)

TRACZYK, Wladyslaw; SADOWSKI, Bogdan

Studies on the role of acetylcholine in the functioning of the caudate nucleus, The acetylcholine content of the caudate nucleus and muscular tension. Acta physiol. pol. 14 no.5:517-526 S-0'63

1. Z Zakladu Fizjologii PAN w Warszawie; kierownik: prof.dr. Fr. Czubalski.

*

SADOWSKI, Bogdan

Study on the role of non-specific brain systems in acute fatigue
in the rabbit. Acta physiol. Pol. 15 no.3:313-325 My-Je '64.

1. Z Zakładu Fizjologii Pracy Polskiej Akademii Nauk w Warszawie
(Kierownik: prof. dr. Wl. Miśsiuro).

SADOWSKI, Bogdan; KRUK, Barbara

Lymphopetic reactions in rabbits as the index of the excitation of the adrenopituitary system in active states produced by the stimulation of the brain with electric current. Acta physiol. Pol. 15 no. 1: 177-193 J1-Ag '64

1. Z Zakładu Fizjologii Pracy Polskiej Akademii Nauk w Warszawie (Kierownik: prof. dr. Wl. Missiuro).

SADOWSKI, Bogdan

Some observations on sleep-like behaviour and arousal produced by electric stimulation of the medial thalamus in rabbits. Acta biol. exp. (Warsz.) 25 no.3:219-232 '65.

1. Institute of Work Physiology, Polish Academy of Sciences, Warsaw 36, Poland.

SADOWSKI Boguslaw

FOUNDED/Chemical Technology. Chemical Products and Their
Application. Food Industry.

H-28

Abs Jour: Ref Zhur-Khin., No 2, 1959, 6291.

Author : Sadowski, Boguslaw.

Inst :

Title : Determination of Dry Gluten in Flour by Drying with
Infrared Rays.

Orig. Pub: Przegl. zboz.-mlynski, 1958, 2, No 4, 107-109.

Abstract: The use of infrared rays for drying gluten eluted from
wheat flour is recommended. - Z.P.

Card : 1/1

TRACZYK, W.; SADOWSKI, B *ogdan*

On increase of acetylcholine content in electrically stimulated
caudate nucleus of rabbit. *Bul Ac Pol biol* no.8:331-335 '59.
(*EEAI* 9:6)

1. Laboratory of Physiology, Polish Academy of Sciences.
Presented by F. Czubalski.
(Acetylcholine) (Tail)

SADOWSKI, Bogdan

Defensive conditioned reflexes in rabbits after unilateral extirpation of caudate nucleus. Acta physiol. polon. 10 no.1:1-10 Jan-Feb 59.

1. Physiological Laboratory of the Polish Academy of Sciences in Warsaw Head: prof. dr Fr. Czubalski.

(BASAL GANGLIA, physiol.

eff. of unilateral excis. of caudate nucleus on defense conditioned reflexes)

(REFLEX, CONDITIONED, same)

SADOWSKI, Bogdan

Studies on functioning of the nucleus caudatus. Rozpr. wydz. nauk
med. 7 no.1:63-86 '62.

1. Starszy asystent Zakladu Fizjologii PAN.
(CAUDATE NUCLEUS)

TRACZYK, ~~Wladyslaw~~; SADOWSKI, Bogdan

Electrical activity of the "cerveau isole" during caudate nucleus stimulation and its modification by eserine and atropine. Acta physiol. polon. 13 no.4:521-533 '62.

1. Laboratory of Physiology, Polish Academy of Sciences, Warsaw, 36
Head: prof. dr F. Czubalski.

(CAUDATE NUCLEUS)
(PHYSOSTIGMINE)

(ATROPINE)

(ELECTROENCEPHALOGRAPHY)
(CEREBRAL CORTEX)

TRACZYK, Wladyslaw; SADOWSKI, Bogdan

Alterations of the muscle tonus due to stimulation of the caudate nucleus
in rabbits. Acta physiol. polon. 13 no.5:609-620 '62.

1. Laboratory of Physiology, Polish Academy of Sciences Head: Prof.
F. Czubalski.

(MUSCLES)

(CAUDATE NUCLEUS)

GROMADZKI, Wojciech; SADOWSKI, Cyprian; GIEDROYC, Bronislawa

Treatment of adnexitis using the mud paste and antibiotics.
Ginek. Pol. 36 no.4:433-442 Ap '65.

1. Z IT Klinika Poloznictwa i Chorob Kobietych AM w Gdansk.
(Kierownik: prof. dr. med. W. Gromadzki) i Z Panstwowego
Uzdrowiska w Ciechocinku (Lekarz Naczelny: dr. C. Sadowski).

SADOWSKI, Edmund (Warszawa)

Organizational problems of performance of the Plock investments.
Przepl budowl i bud mieszk 34 no.4/5:210-218 Ap-My '62.

SADOWSKI, Edmund (Warszawa)

Balancing of tasks and means as an element of management and
organization in building contracting. Przegl budowl i bud
mieszki 23 no.8:478-479,494 Ag'61

SADOWSKI, FRANCISZEK

SADOWSKI, FRANCISZEK. Is the Earth Cooling Off? Problemy, 1952, v. 8,
no. 9 (78), p. 591-594.

5(3)

GER/2-59-8-13/19

AUTHOR: Sadowski, E.

TITLE: Resinification of Solvents During Column Chromatography

PERIODICAL: Chemische Technik, 1959, Nr 8, pp 452-453 (GDR)

ABSTRACT: In this paper the resinification of solvents during column chromatography is discussed. The author of this paper notices the resinification in a column filled with silica gel and with decalin or tetralin as solvent. The resinous products are dark-colored. The exact composition is not yet known. The resinification of decalin is catalyzed by silica gel and depends on the kind of the silica gel. A silica gel previously heated up to 120°C accelerates the resinification. The effect may be weakened if the chromatography is carried out in the absence of atmospheric oxygen and if the silica gel is not pretreated.

Card 1/2

Resinification of Solvents During Column Chromatography

GER/2-59-8-13/19

ASSOCIATION: Forschungsstelle des VEB Lack- und Lackkunstharzfabrik Magdeburg
(Research Department of the VEB Varnish- and Varnish Plastic Works,
Magdeburg)

SUBMITTED: July 9, 1959

Card 2/2

SADOWSKI, Henryk

Remote results after surgical therapy of hallux valgus with
Komza's method. Chir.narz.ruchu ortop. polska 26 no.2:149-155
'61.

1. Ze Szpitala Ortopedyczno-Urazowego im. dr Z.Radlinskiego w Lodzi
Ordynator: dr H. Sadowski Dyrektor dr E. Bartkowiak.
(HALLUX surg)

SZPINAK, Jerzy, inż.; SADOWSKI, Henryk, inż.

Combined heat and electric power management in the city
of Swidnik. Gosp paliw 11 Special issue no.(95):10-11 Ja '63.

1. Wytwarzanie Sprzetu Komunikacyjnego, Swidnik k. Lublina.

SADOWSKI, Henryk

Increasing the span between masimum and disposable power
in the sugar plant in Przeworsk. Gosp paliw 11 Special
issue no.(95):58 Ja '63.

1. OIGPE, Radom.

SADOWSKI, Henryk

Increasing the span between maximum and disposable power in the sugar plant in Przeworsk. Gosp paliw ił Special issue no.(95):58 Ja '63.

1. OIGPE, Radom.

SADOWSKI, J.

Malecki, I., Sadowski, J.: "Analysis of Properties of Sound Absorbing Materials Used in Polish Architecture," (Analiza wlasciwosci materialow dzwiekochlonnych uzywanych w Polskim budownictwie), Inzynieria i Budownictwo, No. 5, 1953, pp 157-164.
Published from the Institute of Basic Technical Problems of the Polish Academy of Sciences and the Chair of Electroacoustics of the Warsaw Polytechnic.

SADOWSKI, Jan; OTTO, Tadeusz Jan

Postoperative use of palfium. Polski tygod. lek. 14 no. 14:646-648
6 Apr 59.

1. (Z II Kliniki Chirurgicznej A.M. w Warszawie; Kierownik: prof. dr med. Jan Mossakowski). Warsz. wa, ul. Obozna 11 m. 17.)
(ANALGESICS AND ANTIPIREPTICS, ther. use
(2,2-diphenyl-3-methyl-4-morpholino)-butyryl pyrrolidine,
prev. of postop. pain (Pol))
(SURGERY, OPERATIVE, compl.
postop. pain, prev., (2,2-diphenyl-3-methyl-4-morpholino)
-butyryl pyrrolide (Pol))
(PAIN, ther.
(2,2-diphenyl-3-methyl-4-morpholino)-butyryl pyrrolidine
in postop. pain (Pol))

SADOWSKI, Jan; MACIEJCZYK, Stanislaw

Treatment of scalp avulsion. Polski tygod.lek. 14 no.51:2231-2233
21 Dec. '59.

1. Z II Kliniki Chirurgicznej A.M. w Warszawie; kierownik prof.
dr.med. Jan Mossakowski.
(SCALP wds.& inj.)

OTTO, Tadeusz Jan; SADOWSKI, Jan

Priamide and palfium in anesthesia. Polski przegl. chir. 31 no.3:
307-312 Mar 59.

1. Z II Kliniki Chirurgicznej A. M. w Warszawie Kierownik: prof. dr.
J. Mossakowski, Adres autorow: Warszawa, Plac Weteranow 4 (Szpital
Przemienienia) 8

(ANESTHESIA,

premedication with (2,2-diphenyl-3-methyl-4-morpholino)
-butyryl pyrrolidine & isopropamide iodide (Pol))

(PARASYMPATHOLYTICS, ther. use,

isopropamide iodide, premedication in anesth. (Pol))

(ANAESTHESICS AND ANTYPYRETICS, ther. use,

(2, 2-diphenyl-3-methyl-4-morpholino-butyryl pyrrolidine,
premedication in anesth (Pol))

ADAMCZAK, Teobald; KASPRZYCKA, Irena; MACIĘJCZYK, Stanisław; SADOWSKI, Jan;
ZAREBA, Janusz

Effects of experimental application of silicic acid in animals.
Polski tygod. lek. 15 no. 18:659-664 2 My '60.

1. Z II Kliniki Chirurgicznej A.M. w Warszawie; kierownik: prof.
dr. med. Jan Mossakowski i z Zakładu Anatomii Patologicznej Szpitala
Miejskiego nr 4 w Warszawie; kierownik: prof. dr. med. Janina
Dąbrowska.

(SILICA toxicol.)

ADAMCZAK, Teobald; KASPRZYCKA, Irena; MACIEJCZYK, Stanislaw; SADOWSKI, Jan

Clinical studies on the use of silicones in surgery. Polski tygod.
lek. 16 no.28:1061-1065 10 JI '61.

1. Z II Kliniki Chirurgicznej A.M. w Warszawie; kierownik Kliniki:
prof. dr med. Jan Mossakowski.

(SILICONES ther)

POLAND

SADOWSKI, Jan, Second Surgical Clinic (II Klinika Chirurgiczna), AM [Akademia Medyczna, Medical Academy] in Warsaw (Director: Docent, Dr. med. Zdzislaw LAPINSKI)

"Treatment of Crural Ulcer with Large Excision of the Damaged Tissue and Fascia and with Primary Skin Graft, Case Report."

Warsaw, Polski Tygodnik Lekarski, Vol 18, No 29, 15 Jul 63, pp 1071-1072

Abstract: [Author's English summary] Author describes surgical treatment of crural ulcer due to varices, consisting in extensive removal of the affected tissues and fascia, and then applying primary skin graft. Complete implantation (95 per cent of the area covered) of the transplant was achieved. Chronic ulceration caused by varices with circumflexin cicatrization, especially with insufficiency of the valves of the communicating veins should be considered an indication for such treatment. 5 references: 1 Polish, 2 English, 2 German.

1/1

SADOWSKI, Jan

Treatment of finger injuries with primary dermatoplasty
(analysis of clinical material). Chir. narzad. ruchu ortop.
pol. 28 no.5:479-483 '63.

1. Z II Kliniki Chirurgicznej AM w Warszawie. Kierownik: doc.
dr. Z. Lapinski.

*

WECEWICZ, Grazyna; SADOWSKI, Janusz; GUSTOWSKI, Andrzej; BOCZKOWSKI,
Krzysztof

Primary amenorrhea related to tumor of the pituitary gland
(Report of 4 cases). Endokr. Pol. 15 no.3:309-319 My-Je '64

1. I Klinika Położnictwa i Chorob Kobietych Akademii medycznej
w Warszawie (Kierownik: prof. dr. T. Bulski); Oddział Endokry-
nologiczny (Kierownik: doc. dr. J. Teter) oraz I Klinika Chorob
Wewnętrznych Akademii Medycznej w Warszawie (Kierownik: prof.
dr. A. Biernacki [deceased]).

SADOWSKI, Jan; ABRAMCZUK, Halina

Thyroid crisis in acute abdominal diseases. Pol. przegl. chir.
36 no.11:1353-1356 K '64

1. S II Kliniki Chirurgicznej Akademii Medycznej w Warszawie
(Nierownik: prof. dr. Z. Lapinski); i II Oddziału Wewnętrznego
Szpitala Miejskiego Nr.4 (Ordynator: prof. dr. W. Filinski).

SADOWSKI, Janusz; KURKUS, Jan

Pituitary or thyroid-based adrenal cortex insufficiency.
Pol. arch. med. wewn. 35 no.6:905-910 '65.

1. Z I Kliniki Chorob Wewnętrznych AM w Warszawie (Kierownik:
prof. dr. med. T. Orłowski).

BUZANOWSKI, Zygmunt; CHOJNOWSKA, Irena; MYSZKOWSKI, Leopold; SADOWSKI, Janusz

Electrophoretic pattern of proteinuria in normal labor and in the course of pregnancy toxemia. Ginek. Pol. 36 no.4:379-383 Ap '65.

1. Z II Kliniki Poloznictwa i Chorob Kobięcych AM w Warszawie (Kierownik: prof. dr. med. I. Roszkowski).

SADOWSKI, Janusz; PRZEZD ~~ZIŁSKI~~, Zdzisław

Effect of ACTH on the level of neutral 17-ketosteroids in the urine in poststratum insufficiency of the anterior pituitary. Endokr. pol. 14 no.5:431-438 '63.

1. I Klinika Położnictwa i Chorob Kobietych A.M. w Warszawie. Kierownik: prof. dr T. Bulski.

KROTKIEWSKI, Andrzej; SADOWSKI, Janusz

Transitory left bundle branch block. Pol. arch. med. wewnet.
34 no.8:1089-1092 '64.

1. Z I Kliniki Chorob Wewnetrznych Akademii Medycznej w Warszawie
(p.o. Kierownika: prof. dr. med. T. Orłowski).

SADOWSKI, Jerzy (Warszawa)

Acoustical insulation in apartment buildings. Przegl budowl
i bud mieszk 33 no.3:155-159 Mr'61.

JUREWICZ, Janusz, mgr inż.; SADOWSKI, Kazimierz

Low-voltage electric apparatus produced by the Apator Works.
Wiad elektrotechn 30 no.5:148-151 My '62.

Sadowski, L. On structural isomorphisms of free products of groups. Rec. Math. [Mat. Sbornik] N.S. 21(63), 63-82 (1947). (Russian. English summary)

In an earlier paper [same Rec. N.S. 14(56), 155-173 (1944); these Rev. 6, 201] the author studied the structural (lattice) isomorphisms of free groups. Here the work is extended to free products. The major part of the paper leads to the following lemma. If between $G = \langle a \rangle * \langle b \rangle$ and G' there is a structural isomorphism f , $G' = G'$, then for every pair of generatrices a, b of the cyclic groups $\langle a \rangle$ and $\langle b \rangle$ we may find generatrices a' and b' of $\langle a' \rangle = \langle a \rangle'$ and $\langle b' \rangle = \langle b \rangle'$ such that $\langle ab \rangle' = \langle a'b' \rangle$. From this he proves his main theorem: a group G decomposable as a free product $G = A * B$ is determined by its subgroup structure. It remains an open question whether or not every lattice automorphism of G is induced by a group automorphism, as he proved for all free groups except the infinite cyclic group.

M. Hall, Jr. (Columbus, Ohio).

Source: Mathematical Reviews, 1948, Vol. 9, No. 3

Smul

10000

SADOWSKI, Ludwik

How to protect installations of the petroleum industry
from lightning. Wiad naft 9 no.7/8:176-178 J1-Ag '63.

SADOWSKI, Ludwik

How to protect installations of the petroleum industry from lightning. Wiad naft 9 no.10:229-232 0 '63.

SADOWSKI, Ludwik

How to protect petroleum industry plants from lightning.
Wiad naft 9 no.11:257-260 N'63.

SADOWSKI, Ludwik

How to protect petroleum industry plants from lightning.
Wiad naft 9 no.12:279-284 D'63.

SADOWSKI, Ludwik

What ought a consumer know about electric current? Wiad
naft 11 [i.e. 9] no.3:65-67 Mr '63.

SADOWSKI, Ludwik

What a consumer of electric current must know about it. Wiad naft
II no.4:87-89 Ap '63.