

PORA, Eugen A., prof.; ROSCA, Dumitru I.; RUSDEA, Delia

Effects of decerebration of the white rats upon the incorporation of  $P^{32}$  in the cold. *Studii biol Cluj* 12 no.2:275-280 '61.

1. Academia R.P.R., Filiala Cluj, Catedra de cercetari biologice, Sectia de fiziologie animala comparata. 2. Membru corespondent al Academiei R.P.R. si membru al Comitetului de redactie, "Studii si cercetari de biologie" - Filiala Cluj - (for Pora).

\*

ROSCA, D.

SCIENCE

PERIODICAL: STUDII SI CERCETARI DE BIOLOGIE Vol. 8, no. 3/4, July/Dec. 1957

ROSCA, D. Physiological effect of the venom of Euscorplus carpathicus L.

Note 8. On the vasomotricity of kidneys and the urine flow in dogs.

Note 9. Hypotensive action, and its mechanism of production. p. 375.

Monthly List of East European Accessions (EEAI) Vol. 8, no. 3/4

April 1959 Unclass.

ROSCA, Dumitru I.; RUSDEA, Delia; OROS, Ioan

Influence of partial-bilateral decortications on regulating the hypophysis-suprarenal system of the white rat subjected to cold. Studii biol Cluj 13 no.2:375-381 '62.

1. Universitatea "Babes-Bolyai" Cluj, Catedra de fiziologie animala, si Academia R.P.R., Filiala Cluj, Centrul de cercetari biologice.

ROSCA, Dumitru, I.; OROS, I.

Studies on the penetration of phosphate with  $P^{32}$  in  
the body of leeches (*Hirudo medicinalis*). Studii biol  
Cluj 13 no.2:347-353 '62.

1. Universitatea "Eabes-Bolyai" Cluj, Catedra de fiziologia  
animalelor.

ROSCA, D., elev mastru

Problems of construction sites discussed by apprentices.  
Constr Buc 15 no.688:4 16 Mr '63.

MUSAT, Gh.; ZAMFIR, Gh.; ROSCA, D.; TEPES, Stanel, student; GRACIUN,  
Ion, merceolog.

In short, from the voluntary newspaper correspondents.  
Constr Buc 16 no. 736:4 15 F'64.

ROSCA, D.

---

SCIENCE

PERIODICAL: STUDII SI CERCEȚARI DE BIOLOGIE Vol. 8, no. e/r, July/Dec. 1957

ROSCA, D.,: KOLASSOVITS, H.: WITTENBERGER, C. On the presence of cholinesterase in some invertebrates of the Black Sea. O. 403

Monthly List of East European Accessions (EEAI) Vol. 8, no. 3/4  
April 1959, Unclass.

ROSSA, D.

SCIENCE

PERIODICALS

ROSSA, D. Physiological effect of the venom of Euscorpius carpathicus  
L. Note 8. On the vasomotricity of kidneys and the urine flow in dogs.  
Note 9. Hypotensive action, and its mechanism of production. p.375.  
Vol. 8, no.3/4, July/Dec. 1957.

Monthly List of Eastern European Accessions (EEAI) Vol. 11, No. 2  
April 1959 Unclass.



ROSCA D.

SCIENCE

PERIODICALS

ROSCA, D. On the presence of cholinesterase in some invertebrates of the Black Sea. p.403. Vol. 8, no.3/4, July/Dec., 1957.

Monthly List of Eastern European Accessions (EMAI) Vol. 11, No. 2  
April 1959 Unclass.

PORA, Eugen A.; ROSCA, D.I.

The survival of some species of aquatic animals in media with modified normal ionic proportion. Studii biol Cluj 10 no.2:293-298 '59. (EEAI 10:2)

1. Centrul de cercetari biologice al Academiei Republicii Populare Romine, Filiala Cluj, Sectia de Fiziologie animala. 2. Membru corespondent al Academiei Republicii Populare Romine (for Pora)  
(MARINE FAUNA) (IONS)

PORA, Eugen A., prof. WITTENBERGER, C.; KOLASSOVITS, H.; ROSCA, D.I.

Research on the visual sensibility of certainfishes in the Black  
Sea. Studii biol Cluj 10 no.2:286-292 '59. (EEAI 10:2)

1. Centrul de cercetari biologice al Academiei R.P.R., Filiala  
Cluj, Sectia de fiziologie animala. 2. Membru corespondent al  
Academiei Republicii Populare Romine (for Pora)  
(BLACK SEA) (RUMANIA--FISHES)

PORA, Eugen, acad., prof. emerit; ROSCA, Dumitru I., conf. dr.; WITTEMBERGER,  
Carol, cercetator principal; PERSECA, Tiberiu, (Cluj)

Research carried out by the Collective of the Chair of Animal  
Physiology in Cluj during the 20 years since the liberation of  
Rumania. Natura Biologie 16 no.5:14-21 S-0 '64.

HOTUPAN, Fl., correspondent; ISZLAI, Albert; CONSTANTINESCU, D., ing.;  
SANDU, S.; STAMATE, Petre; SANDA, Constantin; ROSCA, Dumitru  
ARADANU, G.

From the weekly letters. Constr Buc 16 no. 740:4 14 March  
1964.

1. Seful laboratorului Fabricii de ciment, Medgidia (for  
Constantinescu.

*Florica Rosca*  
RUMANIA/Chemical Technology - Chemical Products and Their  
Application, Part 3. - Carbohydrates and Their  
Treatment.

H-25

Abs Jour : Ref Zhur - Khimiya, No 7, 1958, 22965  
Author : Florica Rosca  
Inst : -  
Title : Upon Some Factors Influencing the Quality of Dextrin Paste  
Orig Pub : Rev. ind. aliment. prod. vegetale, 1957, No 2, 25-26

Abstract : It was found that water used for making starch paste must be about 1 mg-equ. per lit hard, and that the acidity of dextrin must be equal to, or less than, 60 mlit of 0.1 n. NaOH; their optimum ratios are (in kg) 6 : 12 for preparing cigarette glue and 10 : 16 for preparing pack glue. Dextrin is added to water at 80° at continuous stirring, it is kept 60 to 70° hot 3 hours and used 72 hours after having been prepared. The glue is well preserved in cans in the duration of more than 6 weeks.

Card 1/1

NICOLAU, Aurelia; ROSCA, G.

Achievements obtained in the research activity at the Institute  
for piscicultural Studies and Designs. Ind alim anim 11 no.4:  
111-113 Ap'63

1. Institutul de cercetari si proiectari piscicole.

ROSCA, Gr.; CRISTEA, A.; DOGOTERU, Victoria; BEJAN, Raisa

Fishing lines and cords made of polypropylene and polyethylene monofilaments. Ind alim 14 no.9:366-369 S'63.

1. Intreprinderea de plase si unelte pescaresti, Galati (for Dogoteru, Bejan).



*Rosca Grigore*  
Rumania /Chemical Technology. Chemical Products  
and Their Application

I-19

Dyeing and chemical treatment of textiles

Abs Jour: Referat Zhur - Khimiya, No 9, 1957, 32223

Author : Rosca Grigore, Lasca Elisabeta

Title : Preservative Impregnation of Fishing Nets

Orig Pub: Bull. Inst. cercetari piscicole, 1956, 15, No 1,  
88-89

Abstract: The method is based on the use of the fraction of saturated fatty acids derived from Rumanian petroleum ( $C_5-C_9$ ), which are converted to salts of copper oxide.

Card 1/1

HANES, A.; ROSCA, H.; SANDULESCU, D.

Determining melamine in the presence of ammeline, ammeline  
and urea. Rev chimie Min petr 14 no.11/12:680-681 N-D'63.

ROSCA, H.

2

RUMANIA

NAVES, A.; ROSCA, H.; SAMBULESCU, D.

Bucharest, Revista de Chimie, No 11-12, Nov-Dec 63, Vol 14,  
pp 630-631

"The Determination of Melamine in the Presence of Amide,  
Amelino, and Urea."

JOHAN, Francisca; ROSCA, Henrieta; RADULESCU, Olga

Chromatographic method for checking the purity of  
p, p'-diphenylolpropane. Rev chimie Min petr 13  
no.8:486-489 Ag '62.

ROSCA, I. (Bucuresti)

"Course in the Economic Geography of the Socialist  
Countries (Exclusive of the Rumanian People's Republic)."  
Reviewed by I. Rosca. Natura Geografie 15 no.1:84-85  
Ja-F '63.

RUMANIA/Diseases of Farm Animals - Toxicoses.

R-4

Abs Jour : Ref Zhur - Biol., No 14, 1958, 64676

Author : Rosca, I., Poll, E., Paul, I.

Inst : Institute of Agriculture.

Title : A Contribution to the Study of the Poisoning of Horses by the Castor Bean.

Orig Pub : Anuarul lucrur. stiint. Inst. agron., 1957, 457-462.

Abstract : Observations were conducted on 7 horses. The symptoms of poisoning were as follows: infiltration of the conjunctiva, subicteric condition of the sclera with the appearance of punctate hemorrhages, hypothermy, frequent, weak and at times arrhythmic, pulse, loss of appetite up to total anorexia, and persistent constipation. Later on, fibrillary contractions of the muscles were also observed. The disease lasted 2-4 days. The pathomorphological changes

Card 1/2

- 25 -

ROSCA, I., prof. (Bucuresti)

Poles of the earth. Natura Geografie 14 no.1:75-81 Ja-F '62.

ROSCA, I.

3

~~SURNAMES~~ (in-caps); Given Names

Country: Rumania

Academic Degrees: Veterinarian

Affiliation: Faculty of Veterinary Medicine (Facultatea de Medicina Veterinara).

Source: Bucharest, Probleme Zootehnice si Veterinare, No 6, 1961, pp 67-70.

Data: "Mulberry Intoxication in Ducks."

Co-authors:

PAUL, I., Veterinarian, Faculty of Veterinary Medicine (Facultatea de Medicina Veterinara).

FOLL, E., Veterinarian, Faculty of Veterinary Medicine (Facultatea de Medicina Veterinara).



ROSCA, I

Forsterite bricks for clinker furnaces. p. 2

CONSTRUCTORUL, Bucuresti, Vol 8, No. 315, Jan, 1956

SO: East European Accessions List (ETAL) Library of Congress, Vol 5, No. 7, July, 1956

ROSLA, I.

Bucharest, *Natura* (Seria Geografia-Geologia), Vol XI (1962) No 1, Jan-Feb 62

1. "The struggle for a scientific conception in Rumanian Geography," I. BUDURIGAN and M. BUCURIGAN (Bucharest); English Summary; pp 3-6.
2. "Geophysical contributions to the understanding of the Subsoil of the Rumanian People's Republic," STEFAN AIRNIT, ENCI (Bucharest); English Summary; pp 9-22.
3. "The Agriculture of the Rumanian People's Republic in the Phase of the Completion of Socialist Construction," G. GELBORGHEI; pp 23-36.
4. "The Danube Delta," G. GELBORGHEI, G. STANESCU, A. POPA and C. MURICI, Scientific Monographs (Geograph. Simulari) (Bucharest); English Summary; pp 31-41.
5. "Regarding the Presence of Eozoa in the Deposits of Ploesti in the Tancul Paleol," ASIST UNIV I. SIMIONESCU (Iasi); English Summary; pp 42-48.
6. "The Geographical Organization of the Area of the City of Iasi," IAN VASILE MIREA (Iasi); pp 49-51.
7. "Methods and Problems of Research in the Teaching of Geography in the Kindergarten," Prof. FELICIA CRISTINA (Bucharest); pp 52-57.
8. "The Preparation of a Rural Collection," Conf Univ R. GIVLIGAN (Bela Hara); pp 58-60.
9. "Literary Research in Geography," Prof. GUMBORIE GILBORGHEI (Bucharest); pp 61-66.
10. "Latin America: Current Economic and Political Aspects," V. CIUC (Bucharest); pp 66-75.
11. "The Role of the Earth," Prof I. ROSLA (Bucharest); pp 75-81.
12. "Western Snow," A. IONITA (Bucharest); pp 81-82.

(10)

*ROSCA, I. D.*  
PORA, E. A.; ROSHKA, I. D. [*Rosca, I. D.*]; RUSHDYA, Deliya [*Rusdea, Delia*]

Tissue absorption of  $p^{32}O_4H_2Na$  introduced into the venous blood of  
Rhode Island hens. Rev biol 5 no.1/2:111-117 '60. (EEAI 10:9)

(Blood) (Metabolism)

ROSCA, L; LUCA, L.

Research on the influence of ultrasonic on the growth of mulberry silkworms.  
p. 367.

LUSCRARI STIINIFICE. (Institutul Agronomic "Profesor Ion Ionescu de la Brad,"  
Iasi) Bucu resti, Rumania.

Monthly list of East European Accessions (EEAI) LC, Vol. 8, no. 8, Aug. 1959

Uncl.

BRAUNER, R., prof.; DEMAYO, A., dr.; ROSCA, Lucia, dr.

Considerations on cryoglobulinemias. (Apropos of a case). Med.  
intern. 15 no.9:1075-1080 S '63.

1. Lucrare efectuata in Clinica medicala a Spitalului "Brinco-  
venesc" din Bucuresti.

(CRYOGLOBULINS) (PRURITUS) (EDEMA)  
(RAYNAUD'S DISEASE)

DUCA, M.; TEODOROVICI, Gr.; OANA, C.; DUCA, Eugenia; VITA, Alla; BIRSAN, Șt.;  
ROSCA, Lucia; VANCEA, Georgeta; DIMITRIU, G.; MIHAILESCU, G.

Epidemic of adenovirus infection with ocular manifestations. Stud.  
cercet. inframicrobiol. 13 no.3:359-366 '62.

(ADENOVIRUS INFECTIONS) (EYE MANIFESTATIONS)  
(KERATOCONJUNCTIVITIS)

CAZACU, E., ing.; ROSCA, M., ing.

Present technical aspects on sprinkling irrigation. Hidro-  
tehnica 8 no.8:292-297 Ag'63

VOICULESCU, M., Prof.; ROSCA, M.

Late relapse in typhoid fever treated with antibiotics.  
Rev. igiena microb. epidem., Bucur. 1:58-62 Jan-Mar 55.

1. Lucrare efectuata in clinica boli contagioase Colentina.

(TYPHOID FEVER

late relapse, after antibiotic ther.

(ANTIBIOTICS, ther. use

typhoid fever, late relapses in two cases.



COPELOVICI, Y.; GRUIA, M.; ROSCA, M.

Mumps vaccine prepared from autochthonous strains. Studii cerc  
inframicrobiol Special issue-supplement to 12:207-213 '61.

1. Institutul de inframicrobiologie al Academiei R.P.R.

(VACCINES) (MUMPS)

COPELOVICI, Y.; GRUIA, M.; ROSCA, M.

Investigations of the mumps vaccine prepared with autochthonous  
strains. Stud. cercet. inframicrobiol. 12:307-313 Supplement '61.  
(MUMPS immunology) (VACCINES)

ROSCA, N., Ing.; ADAMICH, I., Ing.

Modern methods applied in the crude oil exploitation. Petrol  
si gaze 15 no. 2:387-391 Ag'64.

ROSCA, O.; ROSCA, V.; POPESCU, I.; RUSU, C.

Some species and varieties of fruit trees as a melliferous base. Studii biol agrar Iasi 14 no.1:115-122 '63.

KOSCIUSKO

Distr: 4E2c

✓ The characteristic behavior of nitrites in the Votocek  
 reaction. R. Vlădescu and Nina Rogea (Zootech. Inst.  
 Bucharest, Romania). *Acad. rep. populare Romine, Inst.  
 biochim., Studii cercetări biochim.* 3, No. 1, 83-4(1960).  
 The reaction mechanism in the detn. of nitrite by titration  
 with  $Hg(NO_3)_2$  (cf. *CA* 53, 21427b) can be either a simple  
 mol. assocn. or the formation of a complex compd. The  
 latter explanation is preferred, and the reaction  $8NaNO_2 +$   
 $Hg(NO_3)_2 \rightarrow Na_8[Hg(NO_2)_8] + 2NaNO_3$  is suggested.  
 L. Spiegel

5  
 2 - Jof (NBX map)  
 1 - nic (50)  
 1

IUM.NLI./Chemical Technology. Chemical Products and Their  
Applications. Fermentation Industry.

II

Abstr Jour: Ref Zhur-Khim., No 8, 1959, 29247.

Author : Groza, Z. and Rosca, O.

Inst :

Title : The Utilization of Wine Mash in the Production of  
Calcium Tartrate.

Orig Pub: Gradina via si Livada, 7, No 9, 56-59 (1958)  
(in Rumanian)

Abstract: New technology and equipment for the production of Ca  
tartrate from wine mash at the Milcov factory is  
described. The mash is treated with  $H_2SO_4$  (52° Be);  
the acid is added slowly with careful stirring in  
special mixers at 80-85°. Following acid treatment,  
the mixture is neutralized with 10% milk of lime

Card : 1/2

272

RUMANIAN/Chemical Technology. Chemical Products and Their Applications. Fermentation Industry.

II

Abstr Jour: Ref Zhur-Khim., No 8, 1959, 29247.

Author : Groza, Z. and Rosca, O.

Inst :

Title : The Utilization of Wine Mash in the Production of Calcium Tartrate.

Orig Pub: Gradina via si Livada, 7, No 9, 56-59 (1958)  
(in Rumanian)

Abstract: New technology and equipment for the production of Ca tartrate from wine mash at the Milcov factory is described. The mash is treated with  $H_2SO_4$  (52° Be); the acid is added slowly with careful stirring in special mixers at 80-85°. Following acid treatment, the mixture is neutralized with 10% milk of lime

Card : 1/2

272

IFTIME, P., ing.; ROSCA, P., ing.; RAILEANU, V., ing.

Devices for protection from dangerous axial move in steam  
turbines. Energetica Rum 11 no.12:593-600 D'63.



ROSCA, Petre, ing.; IFTIME, Petre, ing.

Some problems of the admissible limits of the vibrations of  
power generating sets. Energetica Rum 12 no. 6:284-289  
Je '64.

ROSCA, Radu

Isotropic curves. Rev math Roum 9 no.8:741-750 '64

RASC A, RACU

**Rogca, Radu. Sur les courbes et variétés linéaires dans un espace de courbure constante. Acad Roum Bull Sect Sci. 24. 625-633 (1943)**

The author considers systems of spheres and straight lines in non-Euclidean spaces  $I_n$ . A circle in an elliptic space  $I_3$  with center  $(a^1, a^2)$  and radius  $r$  may be represented by a point in an  $I_3$  with coordinates  $(x^1, x^2, x^3)$ . Two points conjugate with respect to the absolute quadric in  $I_3$  correspond to two orthogonal circles. From this it follows that a pencil of circles is represented by a straight line in  $I_3$ . A straight line in  $I_3$  is represented by a point on a quadric in an  $I_3$  (coordinates of Klein). By means of this correspondence the author studies the complexes, the congruences (particularly the congruences of Clifford) and the one-parameter systems of linear complexes (a curve in  $I_3$ ).  
*J. Haantjes (Amsterdam).*

Journal Reviews:

Vol 9 No. 1

Rosca, R.

Rosca, R. Sur une classe de réseaux autoprojectifs.

Acad. Répub. Pop. Române. Stud. Cerc. Mat. 1, 169-174

(1950) (Romanian - Russian and French summaries)

This paper proves three related theorems in the differ-  
ent geometry of nets. (Zentral) One of them is the  
following: Let  $\mathcal{N}$  be a net with the following properties: 1.  
It is projective. 2. It is projective. 3. It is projective.  
Then  $\mathcal{N}$  is a net of the first kind. (Zentral) (Zentral) (Zentral)

J. L. Vanderslice (College Park, Md.)

Source: Mathematical Reviews, Vol. 12, No. 11

80140

ROSCA, RADU.

Roșca, Radu. On transformations of quadratic curves.

Acad. Repub. Pop. Române. Bul. Ști. Ser. Mat. Fiz. Chim. 2, 647-652 (1950). (Romanian, Russian and French summaries)

Tzitzéica [Introduction à la géométrie différentielle projective des courbes, Mémor. Sci. Math., no. 47, Gauthier-Villars, Paris, 1931] studies two types of transformations of quadratic curves into quadratic curves, using (a) a fixed point; (b) punctual antiderivatives of the first order. In a previous unavailable memoir the author studied asymptotic transformations [see Bianchi, Rend. Circ. Mat. Palermo 25, 291-325 (1908)] and their compositions with the first type of Tzitzéica's transformations. Main object of the present paper is the study of the corresponding compositions with the second type of Tzitzéica's transformations. Several results are established of which the simplest reads as follows: In the projective euclidean three-space consider the two quadratic curves  $(x)$ ,  $(\bar{x})$  given in asymptotic correspondence. If they are transformed by their first order antiderivatives  $(a)$ ,  $(\bar{a})$  which are also taken to be in asymptotic correspondence and satisfying, furthermore, the relation  $cSa^2 + \bar{c}\bar{S}\bar{a}^2 - 2S\bar{a}\bar{a} = 0$  ( $c, \bar{c}$  constants), then the transformed quadratic curves  $(y)$ ,  $(\bar{y})$  are also in asymptotic correspondence. *f. Grosswald (Princeton, N. J.).*

Source: Mathematical Reviews,

Vol 13 No. 6

*Small*

Surnames, Given Names

Country: ROSCA, S.  
Rumania

Academic Degrees: -not given-

Affiliation: \*)

Source: Timisoara, Timisoara Medicala, Vol VI, No 1, Jan-Jun 1961, pp 33-37.

Data: "Reanimation in Terminal Collapse State With Transfusions of  
Oxygenated Blood Through Artificial Heart-Lungs."

Authors:

MANDACHE, F.	<u>ROSCA, S.</u>	LUTESCU, I.
MATEESCU, D.	CIOPALA, E.	CANTARGIU, Sofia
PRODESCU, V.	MATEICA, Monica	TANCIU, I.
KOVER, Gh.	CONSTANTINESCU, S.	

\*) Work performed at the Surgical Clinic of "Brincovenesc" Hospital  
(Clinica de Chirurgie a Spitalului "Brincovenesc"), Director: F.  
MANDACHE.

GPO 981643

DIMITRIU, C.C., Prof.; ROSCA, T., dr.; RADULESCU, E., dr.;  
FAGARASANU, I., Prof.; BIRZU, I., dr.; BUCUR, A., dr.

Pre- and post-operative intravenous cholangiocholecystography,  
cholangiography and radiomanometry. Med.int., Bucur. 8 no.5:  
650-660 Sept 56.

1. Clinica medicala si Clinica chirurgicala a Spitalului  
Carol Davilla.

(CHOLANGIOGRAPHY

preoperative & postop. intravenous cholangiocystography,  
indic., compl. & comparison with cholangiography &  
radiomanometry)

(MANOMETER

radiomanometry in biliary tract surg., diag. value)

ROSCA, Tr.dr.; GEORGIAN, M., dr.

Considerations on the hepatic metabolism and elimination of sex hormones. Med. intern. (Bucur.) 16 no.6:695-702 Ja'64.

1. Lucrare efectuata in Clinica medicala a Spitalului de adulti al Raionului "30 Decembrie" Bucuresti (director: prof. C.Ch.Dimitriu).



ZAHACINSCHI, Maria, dr.; VASILESCU, I. dr.; ROSCULESCU, I. dr.

Endomyocardial fibrosis with the clinical and radiological aspects of constrictive calcifying pericarditis. Med. intern. (Bucur.) 16 no.7:881-884. J1'64

1. Lucrare efectuata la Spitalul Nr.1, Craiova.

ROSCA, T.; GOLDSTEIN, I.

Cystalgia and endocrine cystopathy. Med.int.,Bucur. 8 no.6:  
826-836 Oct 56.

1. Clinica medicala, Spitalul Carol Davila Clinica chirurgicala  
Spitalul Panduri.

(BLADDER, diseases  
endocrine disord. & cystalgia)  
(ENDOCRINE DISEASES  
cystopathy, etiol. & ther.)

SCHACHTER, A., Dr.; ROSCA, To., dr.; ILIESCU, V., dr.

Diagnostic difficulties in a case of thrombocytic myelosis.  
Med. int., Bucur. 8 no.2:301-305 Apr-May 56.

1. Lucrare facuta in Clinica medicala a spitalului Dr.  
Carol Davila (director, prof. C. C. Dimitriu).  
(BLOOD DISEASES  
thrombocytic myelosis, diag. & case report)

ROSCA, IR

DIMITRIU, C.C.; ROSCA, Tr.; BULIGESCU, I.

Clinical study of endocrine hepatocholecystopathy. Med. int., Bucur.  
10 mo.1:53-66 Jan 58.

(LIVER DISEASES

endocrine hepatocholecystopathy, pathogen., diag. & ther.)

(GALLBLADDER, diseases

same)

(ENDOCRINE DISEASES

endocrine hepatocholecystopathy, pathogen., diag. & ther.)

ROSCA, Tr., dr.; KARASSI, A., dr.

Clinical and etiopathogenic contributions to multiple gastroduodenal ulcers. Med. intern., Bucur 12 no.11:1651-1664 N '60.

1. Lucrare efectuata in Clinica medicala "I.C.Frimu", Bucuresti.  
(PEPTIC ULCER)

ROSCA, V. ; DUMITRESCU, D.

Modern methods for the treatment of fresh concrete; vacuum - processed concrete. p. 69.  
(INDUSTRIA CONSTRUCTIILOR SI A MATERIALEOR DE CONSTRUCTII. RUMANIA. Vol. 7, no. 2,  
Feb. 1956.)

SO: Monthly List of East European Accessions (EEAL) LC, Vol. 6, no. 7, July 1957, Uncl.

RUMANIA

ROSCA, V., Veterinarian, of the Regional Veterinary Laboratory  
(Laboratorul Veterinar Regional) Roman.

"Epizootological and Laboratory Studies Regarding Cattle  
Abortions in Bacau Regiune."

Bucharest, Revista de Zootehnie si Medicina Veterinara, Vol 13,  
No 9, Sep 63, pp 87-94.

Abstract [Author's English summary modified]: Studies during  
the 1958-1963 period have shown that cattle abortions were due  
both to zoo-hygienic deficiencies and to specific etiological  
agents such as Vibrio-foetus, Salmonella typhi murium, a salmo-  
nella of the group D. Brucella abortus, Listeria monocytogenes  
and Trichomonas genitalis bovis. Prophylaxis of the abortions  
caused by zoo-hygienic deficiencies is based mainly on proper  
feeding, especially during the second part of gestation. To  
combat abortions caused by specific infections, proper feeding  
and housing conditions are important, as well as the elimination  
of infected animals from the breeding program.

Includes 12 references, all Rumanian.

1/1

ROSCA, V., ing.

Prospect of the substitution of spontaneous polarization by  
induced polarization measurements. Rev min 15 no. 4:212-213  
Mr '64.



ROSCA, O.; ROSCA, V.; POPESCU, I.; RUSU, C.

Some species and varieties of fruit trees as a melliferous base. Studii biol agra Iasi 14 no.1:115-122 '63.

ROMANIA

Dr V. ROSCA, Regional Veterinary Laboratory (Laboratorul veterinar regional) Roman.

"Epidemiologic and Epidemiologic Studies Regarding Interdependence in a Focus of Listeriosis Between Different Animal Species and Man."

Bucharest, Microbiologia, Parazitologia, Epidemiologia, Vol 7, No 6, Nov-Dec 1962; pp 521-533.

Abstract: Data correlating outbreaks and individual cases of porcine, bovine and ovine listeriosis with the same disease in otters, fish, frogs, and in man cases in the region between the rivers Bistrita and Ghetul, studied by authors in 1959-1960. Very thorough data about clinical symptoms and course in various animals. Several shepherds and a 3-year old girl were the human cases. Bacteriologic details. Slide, photograph of guinea pig eye, table showing chemical properties of water by 15 criteria (water specimens from 6 locations). Data about sensitivity tests; speculation about transmission mode. Two Western and 12 Russian references.

1/1

~~ROMANO, M.~~ ✓  
Surnames (in caps); Given Names

2

Country: Rumania

Academic Degree: Veterinarian ✓

Affiliation: Regional Veterinary Laboratory (Laboratorul Veterinar Regional), Roman.

Source: Bucharest, Probleme Zootehnice si Veterinare, No 8, Aug 1961, pp 63-67.

Data: "Abortion in Sows with Listerella monocytogenes."

Co-author:

✓ ROMANO, M., -Dr.-, Regional Veterinary Laboratory, Roman.

ROSCA, V.; SCHAFLER, C.

Reaction of tissues to BCG studied in vitro, in the presence of the antibiotics streptomycin and sulfosalicylate-allylthiocyanate-streptomycin (compound 11/2); method for tissue culture. p. 747. COMUNICARILE. Bucuresti. Vol. 5, No. 4, April 1955.

SOURCE: EAST European Accessions List (EEAL), IC, Vol. 5, No. 2, Feb. 1956.

Rosca, V.

✓ 2521. Rosca, V., and Dumitrescu, D. V. New methods and treatment of vacuum concrete (in Romanian), Indust. constr. Mater. constr. 7, 2, 69-73, Feb. 1956.

Stone  
Matt 3

Properties and advantages of vacuum concrete are thoroughly described and recent tests and improvements in treatment, made by A. Coroianu, E. Baibu and C. Ionescu, are presented. References are also made to publications by S. S. Gordon, Chersberg, R. L'Hermite, Leviant and V. Nicolau.

J. J. Polivka, USA

bm  
mt

ROSCA, V.,; FELIX-WECHSLER, B.

V. Action of isonicotinylhydrazonopyruvic acid on embryonal cells of the myocardium. Bul. stiint., sect.med. 7 no.2:573-574 Apr-June 55.

(MYCCARDIUM, eff. of drugs on  
isonicotinylhydrazonopyruvic acid, on embryonal cells)  
(PYRUVATES, effects  
isonicotinylhydrazonopyruvic acid, on embryonal cells  
of myocardium)

RUMANIA

Veterinarian V. ROSCA, Dr M. KUCHTA and Veterinarian N. DIMITRIU,  
Regional Veterinary Laboratory (Laboratorul veterinar regional) Roman.

"Epizootologic, Clinical-Anatomic and Laboratory Studies of Chicken  
Aspergillosis."

Bucharest, Revista de Zootehnie si Medicina Veterinara, Vol 13, No 4,  
Apr 63; pp 88-94.

Abstract [English summary modified]: Two epizootics of *A. fumigatus*  
aspergillosis in chicken flocks are described. The fungus was present  
widely in litter, battery walls, eggs and embryos. Comprehensive  
pathology details. Hygienic measures eliminated the infection. Two  
specimen photographs; 2 photomicrographs; 5 Rumanian, 2 Western and  
2 Soviet references.

1/1

ROSCA, V.

SURNAME (in caps); Given Names

Country: Rumania

Academic Degrees: -Dr.-

Affiliation:\*)

Source: Bucharest, Microbiologia, Parazitologia, Epidemiologia, Vol VI,  
No 5, Sep-Oct 1961, pp 437-438.

Data: "Observations on the Incidence of Trichinosis in Field Mice  
Microtus arvalis and Pitymus subterraneus."

\*) Work done at the Veterinary Laboratory (Laboratorul Veterinar)  
Roman.



ROSCA, Valeriu

Identification of listerellosis in aquatic animals and those living in various natural ponds. Comunicarile AR 12 no.1:87-93 Ja '62

1. Comunicare prezentata de Ilie Popovici, membru corespondent al Academiei R.P.R.

ROSCANIN, S.

"Is it necessary to introduce a recovery clause among transportation agencies under the new conditions of Yugoslav Railroads?" (p. 79)

ZELEZNICE. (Jugoslovenske zeleznice) Beograd. Vol. 10, no. 3, March 1954

SO: East European Accessions List. Vol. 3, no. 8, August 1954

Roscau, H.

0-10

CHU, Tseuyliaw. Institut Politehnico  
PHASE I BOOK EXPLORATION  
ROW/7703

Lucrari Filozofice (Scientific Works) CHU, Teptreliawer Politehnico, 1973.  
637 p. Kriwa also inserted. No. of copies printed not given. No  
contributors mentioned.

PHASE: This book is intended for mathematicians, physicists, chemists, and  
civil and mechanical engineers.

CONTENTS: The book consists of 39 papers by Romanian specialists on problems in  
science and technology, particularly mathematics, physics, chemistry,  
metallurgy, civil and mechanical engineering. Summaries in Russian and  
French or German are given at the end of each article. Some of the articles  
are accompanied by references. No personal files are mentioned. At the back  
of the book there are 27 references, all Romanian.

TABLE OF CONTENTS:

PART I. MATHEMATICS - PHYSICS - CHEMISTRY

Dimitri, M. Geometrical Interpretation of the Differential Equation of a Deep-Scaled Cantilever, and the Graphic Rectification of the Mordell Curve	73
Ionasescu, G. A New Method for Proving the Cauchy Rule	79
Mitulescu, B. Certain Problems of Oscillation and Some Types of Differential Equations	85
Weyden, H. Approximation of Functions by Means of Rational Fractions	95
Stancu, I. Some Properties of the Bernoulli and the Integration of a Functional Equation	101
Stancu, I. Some Remarks Concerning a Functional Equation	107
Stancu, I. On the Functional Equation: $f(x+y) = f(x) + f(y)$	111
$f(x)g(y)$	111
Baluta, I., O. Baluta, A. N. Sava, G. Rival, S. Gocan, and C. Gocan. An Experimental Series on Dry Ice Infrared Radiation in the Process of Melting the Surface of the Surface Melting Made by the Outer Metal- Internal Phase	119
Mitulescu, B., I. Baluta, and H. Weyden. On the Absorption Spectrum of O-Triacetophenone	129
Pinne, R., and A. Terman. Study of Some Modern Methods of Synthetic Resin Treatment in the Ultraviolet Range	135
Stancu, I. Experimental Contributions to the Study of Acoustic Oscillation and Resonance of Laminates	137
Baluta, I., B. Baluta, M. Iliesi, M. Dulceac, L. Iliesi, and I. Sava. Contributions to the Study of Colloidal Clays of the Romanian People's Republic (Second Report)	145
Pinne, R., I. Baluta, M. Iliesi, M. Dulceac, L. Iliesi, and I. Sava. Contributions to the Study of Colloidal Clays of the Romanian People's Republic (Third Report)	159
Pinne, R., and L. Iliesi. Adsorption Isotherms of Methyl Alcohol Vapors on Colloidal Clays of the Bentonite Type	171
Iliesi, L. Contributions to the Method of Studying the Adsorption of Vapors and Gases	181

ROSCHE, H.

"Loading ratios of the doubly-fed 3-phase transformer"

Elektrotech. u. Maschinenbau (EM) 69-475-9 (Nov. 1, 1952) In German

SO: SCIENCE ABSTRACTS, Section B, Electrical Engineering Abstracts, (February 1953) Unclass

ROSCHE, H.

"Magnetization processes during the indirect voltage regulation of transformers"

Elektrotech. Z. (ETZ) A, 73, 553-6 (Sept. 1, 1952)

SOURCE: SCIENCE ABSTRACTS, Section B, Electrical Engineering Abstracts,  
(January 1953), Unclassified.

RCSCH, H.

"Earth faults on three-winding transformer with two windings in delta"

Elektrotech. Z. (ETZ) A, 74, 102-5 (Feb. 11, 1953)

SOURCE: SCIENCE ABSTRACTS, Section B, Electrical Engineering Abstracts,  
(June 1953), Unclassified.

ROSCH, H.

"Calculation Method for the Short-circuit Voltage of Transformer Windings Connected in Zig-zag"

Elektrotech. u. Maschinenbau (EwM) 70, 125-31 (March 15, 1953) In German.

SO: SCIENCE ABSTRACTS, Section B. Electrical Engineering Abstracts, (July 1953). Unclass.

ROSCH, Josef; FRIEDBERGER, Vilem

Rupture of the spleen as a complication of splenoportography.  
Cesk. rentg. 15 no.3:212-216 '61.

1. Rentgenove oddeleni Ustredni vojenske nemocnice v Praze,  
prednosta MUDr. Frantisek Sykora, a II. chirurgicka klinika KU  
v Praze, prednosta doc. MUDr. Jaroslav Lhotka.

(ANGIOGRAPHY compl) (SPLEEN dis)



ROSCH, J.; BRET, J.

Splenic arteriography. Cesk. rentgen. 17 no.6:353-362 N '63.

1. Rentgenologicke oddeleni UVN v Praze, vedouci MUDr. F.  
Sykora.

(SPLENIC ARTERY) (ANGIOGRAPHY)

ROSCH, J.

Contribution to hypotonic duodenography in the diagnosis of pancreatic diseases. Cesk. rentg. 16 no.5:341-350 0 '62.

1. Rentgenologicke oddeleni Ustredni vojenske nemocnice v Praze, prednosta dr. Fr. Sykora.

(PANCREAS)  
(DUODENUM)

(PANCREATIC NEOPLASMS)  
(RADIOGRAPHY)

BOSCH, Josef (Prahá-Břevnov, Valji Borcove 2.)

The significance of splenoportography in the diagnosis of liver diseases. Cesk. rentg. 12 no.2:87-100 June 58.

1. Ustredni vojenska nemocnice, Praha, rentgenologicke oddeleni, prednosta prim Dr. Fr. Dilik.

(LIVER DISEASES, diagnosis  
splenoportography, technic & results (Cz))

(ANGIOGRAPHY,  
splenoportography in diag. of liver dis., technic &  
results (Cz))

ROSCH, Josef; BRET, Jiri; LISKOVA, Miroslava

Improved diagnosis of epigastric tumors with transparietal  
splenoportography. Cas. lek. cesk. 96 no.18:540-547 3 May 57.

1. Ustredni vojenska nemocnice Praha - oddeleni rentgenologicke,  
prednosta prim. Dr. F. Dulik a oddeleni pro chirurgii hrudni a  
brisi, prednosta prim. Dr. B. Placak.

(ABDOMEN, neoplasms

diag. of epigastric cancer with transparietal  
splenoportography (Cz))

(ANGIOGRAPHY, in var. dis.

splenoportography, transparietal in diag. of epigastric  
cancer (Cz))

BRET, J.; ROSCH, J.

Aeteriography and its contribution to the diagnosis of nesidicma.  
Cas. Lek. Cesk. 103 no.17:478-479 Ap 24 '64.

1. Rentgenove oddeleni Ustredni vojenske nemocnice v Praze  
(vedouci MUDr. F. Sykora).

CZECHOSLOVAKIA

ROSCH, J.

X-Ray Ward of the General Military Hospital (Rentgenove  
oddeleni Ustredni vojenske nemocnice), Prague

*Prague*

Bmo, Vnitřni lékařství, No 8, 1963, pp 759-765

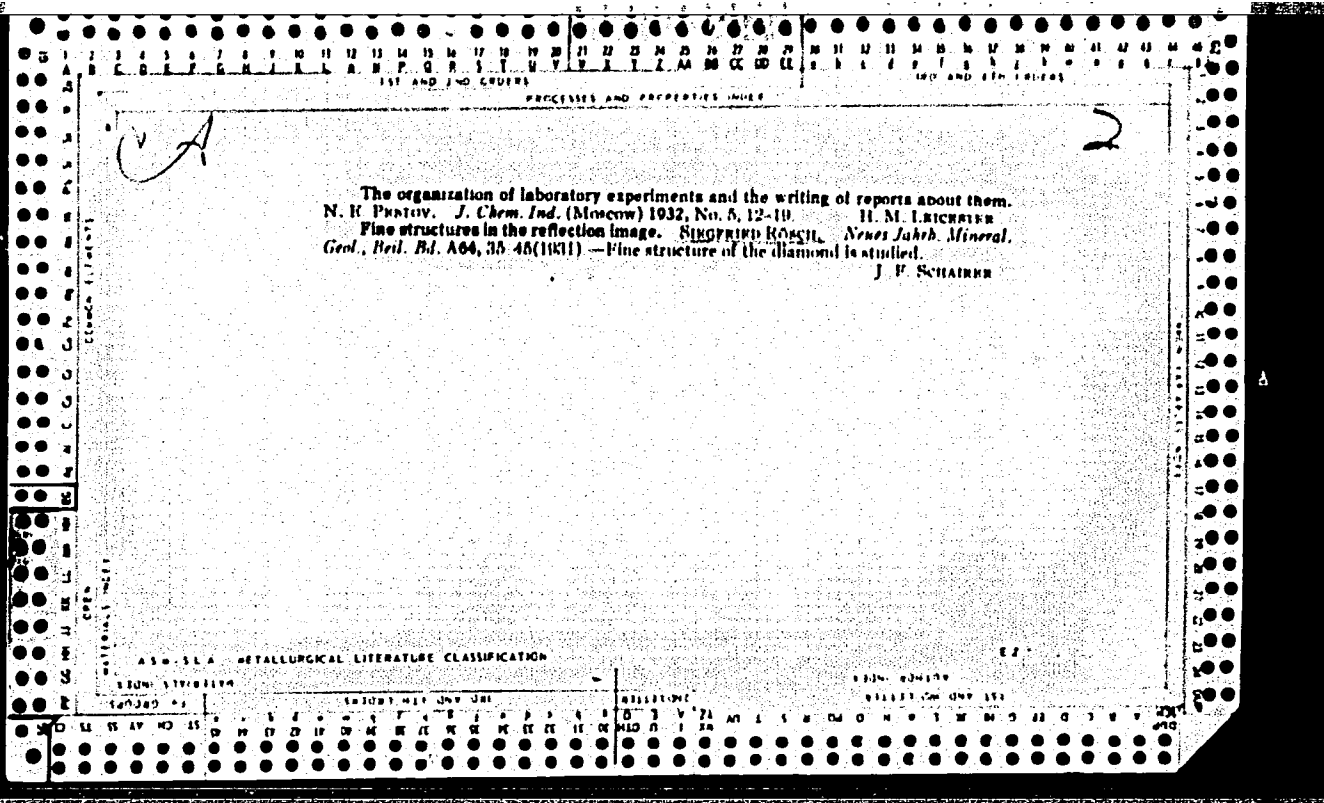
"The Diagnostic Possibilities of X-Ray in Diseases of  
the Spleen."

ROSCII, Josef

Practical contribution of splenoportography. Cesk. rentgenol. 16  
no.3:145-159 Je '62.

1. Rentgenologicke oddeleni Ustredni vojenske nemocnice v Praze,  
predn. dr. Fr. Sykora.

(ANGIOGRAPHY)





1ST AND 2ND ORDERS      3RD AND 4TH ORDERS

PROCESSES AND PROPERTIES INDEX

BC A-3

Determination of carbazole by its hydroxy-methyl derivative. M. A. ILJINSKI and P. B. ROZUMAL. (Ozern. razd. Acad. Sci. U.R.S.S., 1937, 17, 117-120).—Carbazole (I) is determined by combining it with  $\text{CH}_2\text{O}$  to *N*-hydroxymethyl-carbazole, hydrolyzing this by heating with  $\text{H}_2\text{O}$ , oxidizing the resulting  $\text{CH}_2\text{O}$  by  $\text{Na}_2\text{O}_2$  to  $\text{HCO}_2\text{Na}$ , and titrating excess of  $\text{NaOH}$ . The method is satisfactory either with pure (I) or in presence of phenanthrene, anthracene, indole, or acridins.

E. W. W.

COMMON ELEMENTS

NATIONALS INDEX

ASH-SLA METALLURGICAL LITERATURE CLASSIFICATION

FROM NUMBER

GROUP	1	2	3	4	5	6	7	8	9	10	11	12	13	14	15	16	17	18	19	20	21	22	23	24	25	26	27	28	29	30	31	32	33	34	35	36	37	38	39	40	41	42	43	44	45	46	47	48	49	50	51	52	53	54	55	56	57	58	59	60	61	62	63	64	65	66	67	68	69	70	71	72	73	74	75	76	77	78	79	80	81	82	83	84	85	86	87	88	89	90	91	92	93	94	95	96	97	98	99	100
-------	---	---	---	---	---	---	---	---	---	----	----	----	----	----	----	----	----	----	----	----	----	----	----	----	----	----	----	----	----	----	----	----	----	----	----	----	----	----	----	----	----	----	----	----	----	----	----	----	----	----	----	----	----	----	----	----	----	----	----	----	----	----	----	----	----	----	----	----	----	----	----	----	----	----	----	----	----	----	----	----	----	----	----	----	----	----	----	----	----	----	----	----	----	----	----	----	----	----	----	-----

1ST AND 2ND ORDERS      PROCESSES AND PROPERTIES INDEX      1RD AND 4TH ORDERS

BC

H3

Determination of phenanthrene. M. A. IJINSKI and P. B. HOGAN; (Compt. rend. Acad. Sci. U.R.S.S., 1937, 17, 120-124).—Determination of phenanthrene (I) (in mixtures with anthracene etc.) by prop., in xylene, of its picrate (which is weighed, and the amount in solution calc., after a second pptn. using the same mother-liquor) is not satisfactory. Oxidation of phenanthraquinone (II) by CrO<sub>3</sub> varies with the amount of AcOH, H<sub>2</sub>O, or H<sub>2</sub>SO<sub>4</sub> present. Separation of (II) through its H sulphite compound is not complete, but (II) can be separated fairly well from anthraquinone by means of its oxime. The use of this to determine (I) will depend on a quant. method of oxidising (I) to (II).  
 E. W. W.

METALLURGICAL LITERATURE CLASSIFICATION

1ST AND 2ND ORDERS      1ST AND 2ND ORDERS      1ST AND 2ND ORDERS      1ST AND 2ND ORDERS

A B C D E F G H I J K L M N O P Q R S T U V W X Y Z AA AB AC AD AE AF AG AH AI AJ AK AL AM AN AO AP AQ AR AS AT AU AV AW AX AY AZ BA BB BC BD BE BF BG BH BI BJ BK BL BM BN BO BP BQ BR BS BT BU BV BW BX BY BZ CA CB CC CD CE CF CG CH CI CJ CK CL CM CN CO CP CQ CR CS CT CU CV CW CX CY CZ DA DB DC DD DE DF DG DH DI DJ DK DL DM DN DO DP DQ DR DS DT DU DV DW DX DY DZ EA EB EC ED EE EF EG EH EI EJ EK EL EM EN EO EP EQ ER ES ET EU EV EW EX EY EZ FA FB FC FD FE FF FG FH FI FJ FK FL FM FN FO FP FQ FR FS FT FU FV FW FX FY FZ GA GB GC GD GE GF GG GH GI GJ GK GL GM GN GO GP GQ GR GS GT GU GV GW GX GY GZ HA HB HC HD HE HF HG HH HI HJ HK HL HM HN HO HP HQ HR HS HT HU HV HW HX HY HZ IA IB IC ID IE IF IG IH II IJ IK IL IM IN IO IP IQ IR IS IT IU IV IW IX IY IZ JA JB JC JD JE JF JG JH JI JJ JK JL JM JN JO JP JQ JR JS JT JU JV JW JX JY JZ KA KB KC KD KE KF KG KH KI KJ KL KM KN KO KP KQ KR KS KT KU KV KW KX KY KZ LA LB LC LD LE LF LG LH LI LJ LK LL LM LN LO LP LQ LR LS LT LU LV LW LX LY LZ MA MB MC MD ME MF MG MH MI MJ MK ML MN MO MP MQ MR MS MT MU MV MW MX MY MZ NA NB NC ND NE NF NG NH NI NJ NK NL NO NP NQ NR NS NT NU NV NW NX NY NZ OA OB OC OD OE OF OG OH OI OJ OK OL OM ON OP OQ OR OS OT OU OV OW OX OY OZ PA PB PC PD PE PF PG PH PI PJ PK PL PM PN PO PP PQ PR PS PT PU PV PW PX PY PZ QA QB QC QD QE QF QG QH QI QJ QK QL QM QN QO QP QQ QR QS QT QU QV QW QX QY QZ RA RB RC RD RE RF RG RH RI RJ RK RL RM RN RO RP RQ RR RS RT RU RV RW RX RY RZ SA SB SC SD SE SF SG SH SI SJ SK SL SM SN SO SP SQ SR SS ST SU SV SW SX SY SZ TA TB TC TD TE TF TG TH TI TJ TK TL TM TN TO TP TQ TR TS TT TU TV TW TX TY TZ UA UB UC UD UE UF UG UH UI UJ UK UL UM UN UO UP UQ UR US UT UY UZ VA VB VC VD VE VF VG VH VI VJ VK VL VM VN VO VP VQ VR VS VT VY VZ WA WB WC WD WE WF WG WH WI WJ WK WL WM WN WO WP WQ WR WS WT WY WZ XA XB XC XD XE XF XG XH XI XJ XK XL XM XN XO XP XQ XR XS XT XU XV XW XX XY XZ YA YB YC YD YE YF YG YH YI YJ YK YL YM YN YO YP YQ YR YS YT YU YV YW YX YY YZ ZA ZB ZC ZD ZE ZF ZG ZH ZI ZJ ZK ZL ZM ZN ZO ZP ZQ ZR ZS ZT ZU ZV ZW ZX ZY ZZ

BC

A-1

Determination of  $SO_4^{2-}$  in presence of rhodizonic acid as indicator. R. B. BEECHER (Analyt. Chem. Assoc. Proc., 1924, 6, 27-30).  $SO_4^{2-}$  is determined in solution of technical sulphonic acids as follows: 2-3 g. of  $NaOH$ , 5 c.c. of glycerol, 5 g. of  $NH_4Cl$ , 10 c.c. of 0.5N  $BaCl_2$  and 5 drops of 0.5%  $Na$  rhodizonate (I) are added to 10 c.c. of solution, and excess of  $BaCl_2$  is titrated with 0.5N  $H_2SO_4$ . The solutions of (I) deteriorate rapidly, and should be freshly prepared every 24 hr. R. T.

AS H-SLA METALLURGICAL LITERATURE CLASSIFICATION

E-2

ALPHABETIC INDEX										ALPHABETIC INDEX																																									
A	B	C	D	E	F	G	H	I	J	K	L	M	N	O	P	Q	R	S	T	U	V	W	X	Y	Z	AA	AB	AC	AD	AE	AF	AG	AH	AI	AJ	AK	AL	AM	AN	AO	AP	AQ	AR	AS	AT	AU	AV	AW	AX	AY	AZ

1ST AND 2ND EDITIONS      PROCESSES AND PROPERTIES INDEX      3RD AND 4TH EDITIONS

BC B II - 1

Separation of diphenylamine from benzidine. V. A. IZMANOV and R. B. BOGOMOL (Anilinokras. Prom., 1934, 4, 407-412).—14 g. of crude benzidine sulphate (I) and heated at 60° with 10 g. of BaCl<sub>2</sub> and 5 c.c. of conc. HCl in 500 c.c. of H<sub>2</sub>O for 2-3 hr., the ppt. is heated at 80° with 200 c.c. of the above solution for 30 min., collected, and washed with hot 0.5% H<sub>2</sub>SO<sub>4</sub>. H<sub>2</sub>SO<sub>4</sub> is added to the filtrate, containing NH<sub>4</sub>Ph, benzidine, and diphenylamine (II) hydrochlorides, when pure (I) is pptd. NH<sub>4</sub>Ph is separated from the filtrate by steam-distillation, and the residual (II) determined by diazo titration. R. T.

ASB-SLA METALLURGICAL LITERATURE CLASSIFICATION

AUSICAE INDEX

1ST AND 2ND EDITIONS      3RD AND 4TH EDITIONS

GROUPS      1ST AND 2ND EDITIONS      3RD AND 4TH EDITIONS

A B C D E F G H I J K L M N O P Q R S T U V W X Y Z

1ST AND 2ND GROUPS      PRINCIPAL AND SUBPRINCIPAL GROUPS      3RD AND 4TH GROUPS

OC B-3-1

Soil classification. M. J. Renwick (Platypus, 1958, No. 2, 21-24). — A graphic representation of all the different types of soil formation within the temperate climate range is proposed. 7 S principal types (steppes, forest, bog, mountain, and saline) and 14 compound types (made up of 2 or 3 principal types) are distinguished. In a further classification of the soil types of the world, a series of subdivisions on the basis of type of weathering ("hydrothermal factor") is proposed. S, and F. (m)

A.S.B.S.L.A. METALLURGICAL LITERATURE CLASSIFICATION      6-27-57, 1957

1ST LETTER	2ND LETTER	3RD LETTER	4TH LETTER
A B C D E F G H I J K L M N O P Q R S T U V W X Y Z	A B C D E F G H I J K L M N O P Q R S T U V W X Y Z	A B C D E F G H I J K L M N O P Q R S T U V W X Y Z	A B C D E F G H I J K L M N O P Q R S T U V W X Y Z

ROSCAU, Hortensia

Cubature formulas for calculation of multiple integrals. Bul stiiint  
polit Cluj 6:55-93 '63.

ROSCISZESKI, Stanislaw, mgr inz.

A voice in the discussion on problems concerning designing  
processes. Przegl techn 85 no. 30: 3 26 J1 '64.

ROSCISZEWSKA, Bronislawa

A case of secondary glaucoma caused by detachment of the choroid. Klin.oczna 34 no.1:41-45 '64

1. Z Kliniki Ocznej AM w Warszawie; kierownik: prof.dr.med. S.Altenberger [deceased].

\*



ROSCISZEWSKA, D.; CIESIEJSKI, M.

On occupational adaptation of epileptic males. Neurol.  
neurochir. psychiat. Pol. 14 no. 2:215-218 Mr-Apr '64.

1. Z Kliniki Neurologicznej Sl. AM w Zabrze (Kierownik:  
prof. dr med. W.Chlopicki).

CIESIELSKI, Marian; ROSCISZEWSKA, Danuta

Evaluatoin of the educational adaptation of epileptic children in schools. Neurol. neurochir. psychiat. pol. 13 no.6: 855-857 N-D'63

1. Z Kliniki Neurologicznej Sl. AM w Zabrze; kierownik: prof. dr. W. Chlopicki.

\*

GUZ, Irena; LANGAUER-LEWOWICKA, Henryka; ROSCISZEWSKA, Danuta

Sodium and potassium level in heparinized plasma following  
cranial injuries. (Preliminary communication). Neurol.  
neurochir. psychiat. pol. 13 no.1:45-48 '63.

1. Klinika Neurologiczna Sl. AM. Kierownik Kliniki: prof. dr  
W. Chlopicki,

(HEPARIN) (POTASSIUM) (SODIUM)  
(HEAD INJURIES) (SKULL) (BLOOD CHEMICAL ANALYSIS)

ROSGISZEWSKI, Krzysztof, mgr inż.

Pneumatic measurements with the Etamic apparatus. Techn  
motor 13 no.9:301-307 S'63.

ROSCISZEWSKI, Marcin (Warszawa)

Certain population problems of Syria. Czasop geograf 34 no.4:  
399-406 '63.

ROSCISZEWSKI, Marcin

"Agricultural geography of Iraq" by E. Wirth. Reviewed by  
Marcin Rosciszewski. Przegl geogr 35 no.3:500-504 '63.

ROSCISZEWSKI, Marcin

"Asia - a regional and geographic geography" by L. Dudley Stamp.  
Reviewed by Marcin Rosciszewski. Przegl geogr 34 no.1:220-222  
'62.

ROSCISZEWSKI, Pawel

Silicon. Przem chem 41 no.8:431-437 Ag '62.

1. Instytut Tworzyw Sztucznych, Warszawa.



P/014/62/041/008/001/003  
D204/D307AUTHOR: Rościszewski, Paweł

TITLE: Silicones

PERIODICAL: Przemysł chemiczny, v. 41. no. 8, 1962, 431 - 437

TEXT: A short review is given of the modern knowledge of silicones, compiled from Soviet-bloc and Western work. The group is subdivided into silicone oils, rubbers and resins and the structures characteristic of each class are described. The properties of silicones are indicated, particularly: 1) The effects of high and low temperatures, 2) dielectric and mechanical properties, 3) chemical inertness, 4) hydrophobic and anti-adhesive properties, 5) surface activity, and 6) physiological neutrality. Applications of the various types of silicones are discussed and tabulated, and the methods of synthesis are described in some detail. A method of synthesis has been developed and patented by the Instytut tworzyw sztucznych (Institute of Synthetic Materials, Warsaw) in 1959. Present research at the above Institute (ITS) is concentrated on resins for glass laminates, and on resin lacquers. As a result of the work carried out by ITS,

Card 1/2

Silicones

P/014/62/041/008/001/003  
D204/D307

an experimental silicone plant producing ~10 tons p.a. has been set up in Zakłady chemiczne Sarzyna (Chemical Works Sarzyna). The production of silicone insulators is chiefly carried out by Gliwickie zakłady tworzyw sztucznych (Synthetic Materials Establishment, Gliwice) and Zakład materiałoznawstwa elektrycznego instytutu elektrotechniki (Establishment of the Science of Electrical Materials, Electrotechnical Institute). Application of home-produced silicones to constructional work are studied by Instytut techniki budowlanej (Institute of Constructional Methods) and Instytut szkła i ceramiki (Institute of Glass and Ceramics, Warsaw), and to the impregnation of textiles by Centralny instytut ochrony pracy (Central Institute for the Protection of Labor Conditions), in Warsaw. Silicones produced by the ITS were further tested by a number of other institutions, with a view to extending their utilization in Poland. There are 5 figures, 2 tables and 30 references: 22 Soviet-bloc and 8 non-Soviet-bloc.

ASSOCIATION: Instytut tworzyw sztucznych (Institute of Synthetic Materials)

Card 2/2

RAUTENSTRAUCH, St., mgr inz.; ROSCISZEWSKI, W., mgr

Development of the production of detergents and cosmetics in  
Poland. Chemik 17 no. 2: 41-44 F '64.

SMIRNOV, N. I., ROSCHANOVSKIY, B. V.

Agricultural Engineering

Meliorating unit of the Northern Scientific Research Institute of Hydrotechnology  
and Melioration - a universal trailer for tractor S-80, Gidr. i Mel 4, No. 3, 1952.

Monthly List of Russian Accessions, Library of Congress, June 1952. Unclassified.