

Rumania/Pharmacology. Toxicology. Narcotic Drugs

U-1

Abs Jour : Ref Zhur-Biol., No 7, 1958, 32787

the increase in the secretion of lll induced by the irritation of the splanchnik was investigated. The authors found that like the action of other drugs the action of soporifics may be nonspecific and specific. A nonspecific effect is known as one which affects the processes which are the results of the modifications in the action of mediators caused by a given substance. l has shown that luminal has a specific and a nonspecific effect on the working organ, with the first predominant when large doses, and the second predominant when small doses are administered. The nonspecific action is exhibited in a weakened reaction of the organs to l, while the effect of ll and potassium ions does not change. The specific effect of large doses is indicated by a primary paralysis of the cells in which they are insensitive to l, ll, potassium ions, and even to barium chloride. Chloral, paraldehyde, and chloralose while nonspecific in action intensify the effect on l on the musculature. Their specific action causes contractions, which is succeeded by a second paralysis caused by exhaustion. In experiments on a dog luminal inhibited the action of l (produced a frenatorial action); the greater the dose the greater its inhibition. It was impossible to differentiate between this action and its specific paralyzing action. Small doses of chloral, paraldehyde, and chloralose as a result of their nonspecific action intensify the effect of l on the nervous system; large doses depress it (specific frenatorial effect). In some small animals chloralose may induce spasms. Luminal interferes with the increase in the secretion of lll by the myeloid substance of the suprernals induced by l and potassium ions. Chloral, paraldehyde, and chloralose have no effect on the secretion of lll.

Card 2/2

STOENFESCU, Valeriu, ing.; ROBOCEA, T., ing.; HULEA, I.; MIRCEA, Ion; MUSCA,
M.; DUMITRU, Pavel, ing.; MIHES, T.; NINA, N.; PETRESCU, EI.

Improvement of the textile product quality. Probleme econ. 18
no.5:161-165 My '65.

1. Director, Galati Textile Enterprises (for Stoennescu).
2. Director, Rumanian Cotton Manufacture, Jilava (for Roboccea).
3. Chief Engineer, Rumanian Cotton Manufacture, Jilava (for Hulea).
4. Director, Pitesti Textile Enterprise (for Mircea).
5. Chief Engineer, "Dacia" Textile Enterprise, Bucharest (for Musca).
6. Technical Service, "Dacia" Textile Enterprise (for Dumitru).
7. Director, "Elect" Enterprise, Bucharest (for Mihes).
8. Chief Engineer, "Elect" Enterprise, Bucharest (for Nina).
9. Head of the Office of Technical Quality Control, "Elect" Enterprise, Bucharest (for Petrescu).

PARKHON-SHTEFANESKU, K.; KORTEZ, R.; PETRESKU, F.

Hysterical paraplegia with an unusually long course. Zhur. nevr. i
psikh. 60 no.10:1318-1323 '60. (MIRA 14:1)

(PARAPLEGIA)

(HYSTERIA)

TIMOC, I.; HICA, L.; PETRESCU, G.; MAUKSCH-KOVATS, M.; CULCITCHI, N.

Pulmonary exoision in a child aged six months. Rumanian M Rev. no.3:
36-37 J1-S '60.

(PNEUMONECTOMY in inf. & childh.)

PETRESKU, G. [Petrescu, G.]; RADU, K. [Radu, C.]

Seismicity of the territory of the Rumanian People's Republic
from 1901-1960. Izv. AN Mold. SSR. no.4:68-90 '62.

1. Akademiya nauk Rumynskoy Narodnoy Respubliki. (MIRA 18:3)

PETRESCU, G.

Rumania/Physics of the Earth - Seismology, 0-3

Abst Journal: Referat Zhur .. Fizika, No 12, 1956, 36364

Author: Petrescu, G., Andrei, A.

Institution: None

Title: Determination of the Depth of the Eypocenter of the Earthquake of 20 June 1950 in the Vrancea Mountains

Original

Periodical: Rev. Univ. "C. I. Parhon" si Politehn. Bucuresti. Ser. stiint. natur., 1955, No 6-7, 175-179; Rumanian; Russian and French resumes

Abstract: To determine the position of a deep earthquake in the Vrancea Mountains, microseismic data from 20 seismic staticns were used. The average value of the depth of the earthquake was determined (h = 170 km). Tables are given of comparison with 14 earthquakes in the Vrancea Mountains, which occurred earlier and were studied by various investigators in Rumania and abroad.

Card 1/1

PETRESKU, G.

Seismicity of the territory of the Rumanian People's Republic from
1935 to 1955. Biul. Sov. po seism. no.6:43-47 '57. (MIRA 11:3)

1. Bukharestskaya Observatoriya Akademii nauk Rumynskoy Narodnoy
Respubliki, Sektsiya seysmologii, Bukharest.
(Rumania--Seismology)

S/169/62/000/010/025/071
D228/D307

AUTHORS:

Petrescu, G. and Radu, C.

TITLE:

Seismic activity of the territory of the RPR in the period 1901-1960

PERIODICAL:

Referativnyy zhurnal, Geofizika, no. 10, 1962, 30, abstract 10A190 (An. științ. Univ. Iași, sec. 1, 6, no. 3, supl., 1960, 757-782 (Rum.; Summaries in Rus. and Fr.))

TEXT:

The seismicity of the RPR's territory is investigated on the grounds of instrumental and historical data for the period 1901-1960. The Vrancea region is studied in detail. A seismic zoning map is given.

[Abstracter's note: Complete translation]

Card 1/1

S/169/62/000/005/009/093
D228/D307

AUTHORS: Petrescu, G. and Radu, C.

TITLE: The question of compiling a seismic map of Europe

PERIODICAL: Referativnyy zhurnal, Geofizika, no. 5, 1962, 18, abstract 5A127 (Studii și cercetări astron. și seismol. Acad. RPR, 6, no. 1, 1961, 113-126)

TEXT: A catalog of earthquakes with $I_0 \geq 6$, which have occurred on the territory of the RPR from 1900, has been compiled. The epicenters of these earthquakes are grouped in 9 epicentral regions. The mechanism of the deep-focus earthquakes near Vrancea on November 10 and October 22, 1940, is considered. The plane approximately perpendicular to the bend of the Carpathians is chosen as the plane of rupture. The obtained results explain the shape of the isoseismals of these earthquakes. [Abstracter's note: Complete translation.] ✓

Card 1/1

S/169/62/000/009/012/120
D228/D307

AUTHORS: Petrescu, G. and Radu, C.

TITLE: Seismicity and seismic zoning of the RPR's territory
in the period 1900-1958

PERIODICAL: Referativnyy zhurnal, Geofizika, no. 9, 1962, 21, ab-
stract 9A132 (Studii și cercetări astron. și seismol.,
6, no. 2, 1961, 225-245 (Rum.; summaries in Russ. and
Fr.))

TEXT: A general picture of the seismicity is given, with an ac-
count of: a) distribution of earthquakes in space and time; b)
earthquake energies; and c) frequencies of earthquakes of differ-
ing strength. Only microseismic data were used. Special attention
is paid to the Vrancea area, where earthquakes occur at a depth
 $h \geq 100$ km. A map of the distribution of foci near Vrancea is given,
lines of equal depth being distinguished on it. The distribution of
foci in a vertical east-west section is shown. A group of foci,
starting from 100 km and associated with the asthenosphere's upper

Card 1/2

Seismicity and seismic ...

S/169/62/000/009/012/120
D228/D307

limit, is distinguished. A map of the seismic zoning of the RPR's territory is presented. The evolution of geologic concepts concerning the RPR's seismicity is briefly stated. 22 references.
[Abstracter's note: Complete translation.]

Card 2/2

S/169/62/000/009/003/120
D228/D307

AUTHORS: Petrescu, G., Radu, C. and Ionescu-Andrei, P.

TITLE: Seismic activity on the territory of the RPR in 1959. Comments concerning the atmosphere and the crustal structure near Vrancea

PERIODICAL: Referativnyy zhurnal, Geofizika, no. 9, 1962, 7, abstract 9A25 (Studii și cercetări astron. și seismol., 6, no. 2, 1961, 247-258 (Rum.; summaries in Russ. and Fr.))

TEXT: The results of studying the earthquakes that occurred on the territory of the RPR are presented in the first part. The stronger earthquakes are examined. The crustal structure in Europe is defined. Certain judgments concerning the asthenosphere and the crustal structure in the vicinity of Focșan are expressed in the second part of the work. A value of 90 km was obtained for the asthenosphere's upper limit; this agrees with N. V. Shebalin's data (RZh-Geofiz, 1962, 6A106). The granite layer's depth is defined as 13 km.

Card 1/2

Seismic activity on ...

S/169/62/000/009/003/120
D228/D307

This value coincides well with the data of geologic investigations.
21 references. [Abstracter's note: Complete translation.] ✓

Card 2/2

S/169/62/000/010/030/071
D228/D307

AUTHORS: Petrescu, G. and Ionescu-Andrei, P.

TITLE: Suggested alterations to Standard STAS 2923-52 entitled "Construction standards. Macro seismicity zones"

PERIODICAL: Referativnyy zhurnal, Geofizika, no. 10, 1962, 30-31, abstract 10A196 (Studii și certări astron. și seismol., 6, no. 2, 1961, 259-267 (Rum.; summaries in Rus. and Fr.))

TEXT: On the basis of macro seismic observational data for earthquakes that have occurred on the territory of the RPR, and also of micro seismic investigations of these earthquakes, the authors propose the introduction of improvements into the standard STAS 2923-52 so that it will correspond to modern requirements and reflect the macro seismic effects actually observed.
[Abstracter's note: Complete translation]

Card 1/1

PETRESCU, G.; IONESCU-ANDREI, P.; RADU, C.

Problem of the State Standard STAS 2923-52. Studii astron seismol 7
no.2:323-334 '62.

PETRESCU, G.; RADU, C.

Structure of the earth's crust in Rumania. Studii astron seismol 7
no.2:335-341 '62.

PETRESCU, G.; RADU, G.

Unification of intensity scales. Studii astron seismol 7 no.2:343-
350 '62.

PETRESCU, G.; RADU, C.

Seismicity of the Rumanian land in the period anterior to 1900.
Probleme geofiz 2:79-85 '63.

GENTEA, Alexandra, dr.; LUNGU, Tr., dr.; PETRESCU, G., dr.

Clinico-radiological aspects of bilio-bronchial fistulas.
Med. intern. (Bucur) 17 no.2:237-240 P'65.

1. Lucrare efectuata in Clinica de ftizologie, Institutul
medico-farmaceutical, Cluj (director: prof. L. Daniello).

VISCRIAN, Ioan; TIBU, Margareta; PETRESCU, Gabriela

Electronic paramagnetic resonance of D.F.P.R. in a weak
magnetic field. Studii fiz tehn Iasi 14 no.2:381-391 '67.

TIMOC, I.; PETRESCU, G.; MOLL, E.

On the utility of hyaluronidase in phthisiopneumology.
Rumanian med. rev. 7 no.4:61-67 O-D'63

*

15(8)

RUM/3-59-10-13/16

AUTHORS: Mihail, P.; Istrăţoiu, R.; Topciu, R. and Petrescu, Gh.

TITLE: Direct Polymerization of Propylene From the C₃ Fraction

PERIODICAL: Revista de Chimie, 1959, Vol 10, Nr 10, pp 602-606

ABSTRACT: Rumania has rich reserves of propylene whereas its aromatics are limited; it was, therefore, natural to try to obtain polystyrene on the basis of an aliphatic product. When the problem arose, Rumania lacked a separation installation for concentrated propylene, needed in polymerization. A solution was found by obtaining polypropylene directly from the C₃ fraction which abounds in Rumanian refineries. Since in the near future important quantities of polypropylene will have to be produced, it was decided to test the procedures in a semi-industrial installation to evaluate the results technically and economically. Pertinent literature indicates the use of a

Card 1/3

RUM/3-59-10-13/16

Direct Polymerization of Propylene From the C₃ Fraction

monomer with high gas concentration (more than 95%), the polymerization being effected in a hydrocarbon solvent (pentane, hexane, etc.). The author enumerates the various advantages and disadvantages of the procedure. Experiments in the laboratory were at first conducted by using a synthetic C₃ fraction whereas presently, the process is being carried out with the C₃ fraction from refineries. The specific problems of the new procedure are: Desulfurization and purification of the C₃ fraction to make it capable of polymerization; the polymerization of propylene contained in the C₃ fraction without using another solvent; the use of residual gases remaining after polymerization; and the establishing of a technological scheme for designing a semi-industrial installation. In the laboratory, the mixture was achieved in an V2A autoclave with an anchor-type agitator, the separation being achieved by distending the

Card 2/3

RUM, '3-59-10-13/16

Direct Polymerization of Propylene From the C₃ Fraction

gases; in the semi-industrial installation special mixers will be used, the two phases will be separated in separators while the desulfurized C₃ fraction after drying is sent to the polymerization installation. Figure 1 shows the semi-industrial installation. Parameters characteristic of the new system are: the conversion as a function of the concentration and the nature of the catalyst; the molecular weight as a function of the molar ratio catalyst cocatalyst; the conversion as a function of the temperature of the reaction; conversion as a function of the time of the reaction; and the importance of agitation. Figure 8 suggests a design for the industrial installation based on the results obtained in the laboratory.
There are 2 flow charts, 1 diagram, 5 graphs and 2 tables.

Card 3/3

PETRESCU, Gh., ing.; MARFIEVICI, D., ing.

Textile machines on the level of advanced technology. Ind text
Rum 14 no.4:164-171 Ap '63.

ABRUDAN, V., ing.; CIOBANU, M., ing.; PETRESCU, Gh., ing.; VILVOI, V.; IONESCU, C., ing.; KESTENBAUM, S.; FORRAI, St., ing.; FUCIU, Martian; NILA, Vasile, ing.; AROMINESEI, Alexandru; MORARU, Nicolae, ing.; BOGHICI, A.; SIMIONESCU, M.

Reduction of specific consumptions of metal. Probleme econ 17 no.12:137-141 D '64.

1. Technical Director, Arad Plant of Railroad Cars (for Abrudan).
2. Chief Technologist, Arad Plant of Railroad Cars (for Ciobanu).
3. Technical Director, "1 Mai" Plant, Ploiesti (for Petrescu).
4. Chief Planning Engineer, "1 Mai" Plant, Ploiesti (for Vilvoi).
5. Director, "Infratirea" Machine Tool Plant, Oradea (for Ionescu).
6. Assistant Chief Engineer, "Infratirea" Machine Tool Plant, Oradea (for Kestenbaum).
7. Chief Technologist, "Infratirea" Machine Tool Plant, Oradea (for Forrai).
8. Director, Arad Plant of Lathes (for Fuciu).
9. Chief Technologist, Arad Plant of Lathes (for Nila).
10. Chief Engineer, Arad Plant of Lathes (for Arominesei).
11. Technical Director, "Independenta" Plant, Sibiu (for Moraru).
12. Director, Sinaia Mechanical Plant (for Boghici).
13. Chief Engineer, Sinaia Mechanical Plant (for Simionescu).

HOSU, Vasile ing., laureat al Premiului de stat pe anul 1964; PETRESCU,
Ch., ing., laureat al Premiului de stat pe anul 1964

A unique ore for furnaces. St si Teh Buc 17 no.1:3-5 Ja '65.

MOLDVAI, Tamara, I. G., ISTRĂȘCU, Gabriela, Iup.

Methods of qualitative analysis for determining synthetic rubbers
in rubber mixtures. Industria usorara 12 no.1:15-24. Ia '65.

1. Leather and Rubber Research Institute, Bucharest.

PETRESCU, Gh.

On the flow of artesian wells in some peculiar cases.
Gaz mat fiz 69 no.9:331-337 S '64.

L 44756-66

ACC NR: AP6032894

SOURCE CODE: RU/0004/65/000/007/0243/0247

AUTHOR: Petrescu, Gheorghe (Professor; Engineer; Doctor of ~~technical~~ sciences; 31
Bucharest) B

ORG: General Directorate for Metrology, Standards and Inventions, Council of Ministers
(Directia generala pentru metrologie, standarde si inventii de pe langa Consiliul de
Ministri)

TITLE: New method of investigating voltage drops in collector machines

SOURCE: Electrotehnica, no. 7, 1965, 243-247

TOPIC TAGS: alternating current, direct current, electric shunt, magnet

ABSTRACT: The author attempts to determine whether the alternating current flowing through the windings of direct-current collector devices produces an inductive voltage drop in the armature winding even in the presence of a magnetic shunt. Using the general theory of alternating currents he concludes that there is only an ohmic voltage drop in the brushes, and confirms the conclusion by an analysis of the physical alternating phenomena of the current from the collector. Orig. art. has: 3 figures and 11 formulas. [Based on author's Eng. abst.] [JPRS]

SUB CODE: 09 / SUBM DATE: 24Nov64 / OTH REF: 005

Card 1/1 ULR

UDC: 621.313.2.013.4
0920 0411

PETRESCU, I.

Manufacture of lined containers from tenax paper.

p. 282 (Celuloza Si hartie. Vol. 5, no. 7, Oct. 1956. Bucuresti, Romania)

Monthly Index of East European Accessions (MI) I. Vol. 7, no. 2,
February 1958

COUNTRY : ROMANIA
CATEGORY : Chemical Technology. Chemical Products and
Their Applications. Food Industry h
ABS. JOUR. : ACHIM., No. 23 1959, No. 83959
AUTHOR : Petrescu, J
INST. :
TITLE : Developments in the Production of Green Peas
Preserves
ORIG. PUB. : I. 2. Aliment. Prod. veget., 1959, 11, No 2, 57
-58
ABSTRACT : No abstract.

CARD: 1/1

CONSTANTINESCU, N.; BERCOVIGI, C.; ZAVATE, Olga; PETRESCU, Iulia; DAMATIRCA, D.;
PLACSIM, Al.; ROZENBOIM, Ety

A hydric epidemic of epidemic hepatitis preceded by dysentery.
Stud. cercet. inframicrobiol. 13 no.4:443-448 '62.
(HEPATITIS, INFECTIOUS) (WATER POLLUTION)
(DYSENTERY, BACILLARY)

PETRESCU, I.M., ing.

Considerations on the designing of flour silos. Ind alim
14 no.8:303-306 Ag'63.

PETRESCU, Ioan Gh.

Traffic zones of large railroad centers in Rumania.
Rev callor fer 12 no. 4:208-215 Ap '64.

PETRESCU, Ioan Gh.

Contributions to the determination of classification criteria for
main and secondary railways in Rumania. Rev cailor fer 11 no.6:
334-338 Je '63.

PETRESCU, Ioan Gh.

Zone of circulation of trains in Rumania. Rev tailor fer 10 no.9:
489-493 S '62.

2
TSURAI, I.; PAKHADZHI, E., MAKSIMILIYAN, V.; CHOKINE-BZNESKU, K.;
SHTEFENESKU, V.; ZHERKAN-ALBU; PETRESKU, K., KUREA, B., ROSHALE, E.

Paralysis of the right half of the diaphragm. Vest. khir. 84 no.5:
26-32 My '60. (MIRA 13:12)

(DIAPHRAGM--DISEASES)

PETRESCU, I.

"The Bucharest of tomorrow," p. 9 (Stinta Si Cultura, Vol. 5, no. 3, Mar. 1953, Bucuresti)

SO: Monthly List of ~~Accessions~~ ^{East European} Accessions, Vol. 2, No 9, Library of Congress, September 1953, Uncl.

PETRESCU, L.

"Research on plantings of black poplar hybrid in the flood plain of the Danube." p. 18.
(REVISTA PADURILOR, Vol. 68, no. 4, April 1953, Bucuresti, Rumania)

SO: Monthly List of East European Accessions, L. C., Vol. 3, No. 4, April 1954, Uncl.

PETRESCU, L.; DIYESCU, R.

"Permanent Test Sites for Research in Forest Growth and Production." P. 261.
(ANALELE ROMANO-SOVIETICE, Vol. 69, No. 6, June, 1954, Bucaresti, Rumania.)

SO: Monthly List of East European Accessions, (EEAL), LC, Vol. 4,
No. 1, Jan. 1955 Uncl.

PETRESU, L.; DISEJCU, R.

Preliminary study on the production and productivity of groves of black
hybrid poplars. p.315
Vol 70, No 7, July 1955

SCURCE: East European Accessions List (E.E.L), LC Vol. 5, No. 3, March 1956

FETRESCU, L.

Shepe and volume of hybrid black poplars. p. 443, Vol 70, No. 10, Oct 1955,
REVISTA PADURILOR, BUCURESTI, ROMANIA

SOURCE: East European Accessions List (EEAL) LC Vol 5, No 6, June 1956

PETRESCU, L.

Contributions to the study of the form of hybrids of black poplars.
p. 382. REVISTA PADURILOR. (Asociatia Stinifica a Inginerilor si
Technicienilor din Romania si al Ministerului Agriculturii si
Silviculturii) Bucuresti. Vol. 70 (i.e. 71) no. 6, June, 1956.

SOURCE: East European Accessions List, (EEAL) Library of Congress, Vol. 5,
no. 11, November, 1956.

PETRESCU, L.

RUMANIA / Forestry. Forest Management.

K

Abs Jour: Ref Zhur-Biol., No 7, 1958, 29565.

Author : Petresku, L.

Inst : Not given.

Title : The Growth of Hybrid Black Poplar Trees and Plantings.
(Rost derev'yev i nasazhdeniy chernykh gibridnykh topoley).

Orig Pub: Rev. padurilor, 1957, 71, No 5, 299-303.

Abstract: A review of the data of dendrometrical observations made in 1954-1956 in hybrid black poplar plantings in Rumania. A valuation sketch is presented of the planting and individual trees.

Card 1/1

56

FETRESCU, L.

The use of the "top height" in forest-production evaluation work. p. 452

(REVISTA PODURIOR. Vol. 71, No. 7, July 1957. Bucuresti, Rumania)

SO: Monthly List of East European Accessions (EEAL) LC. Vol. 6, No. 10, October 1957. Uncl.

Country : Romania K
CATEGORY : Forestry, Forest Cultures.
A.S. JOUR. : RZSjol., No. 2, 1959, No. 6198
AUTHOR : Petreşcu, Laurentiu
INST. : ---
TITLE : Frost Injury in Black Poplar Hybrid stands
in Romania.
ORIG. PUB. : Rev. padurilor, 1958, 72, No.4, 214-215.
ABSTRACT : No abstract

CARD: 1/1

PETRESCU P.

BRAHAD, B.; PILAT, L.; MOSCOVICI, B.; LILLIS, M.; PETRESCU, L.; SARP, I.

Etiology of pneumoconioses in coal miners. Probl. ter., Bucur.
no.7:141-150 1957.

(PNEUMOCONTOSIS
in coal miners, incidence & etiol.)

PETRESCU, L., BARHAD, B., PILAT, L.

Pneumokoniosis in the mining industry and its prevention. p. 466

REVISTA MINELOR. (Ministerul Minelor, Ministerul Industrii Petrolului si
Chimiei, Directia Exploatarilor Miniere si Asociatia Stiintifica a Inginerilor
si Tehnicienilor din Romania) Bucuresti, Rumania. Vol. 10, No. 11, Nov. 1959

Monthly List of East European Accessions (EEAI) Lc, Vol. 9, No. 2, Feb. 1960
Uncl.

PETKESCU, Z.

16 JUL 1964

37.

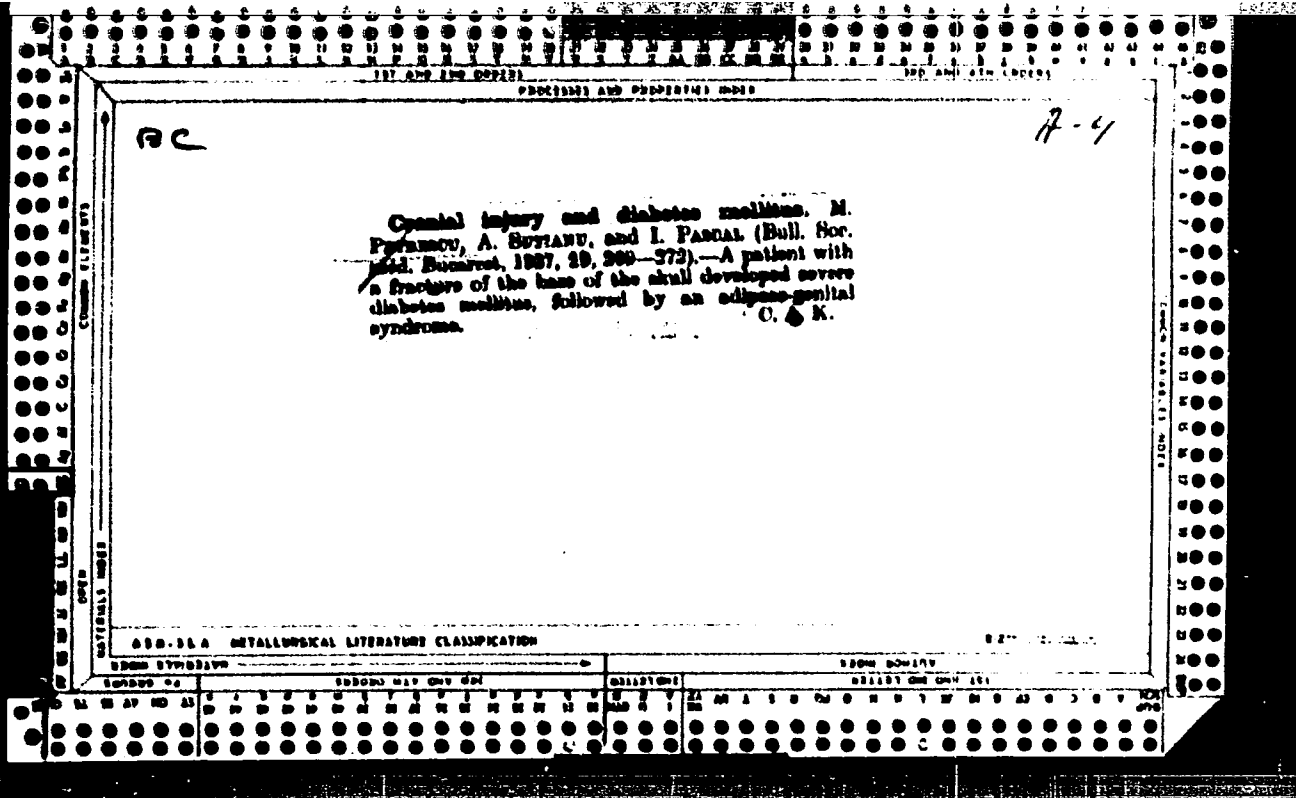
23P

1. Occupational Cancer of the Skin in City of Brasov and the Machine Industry, Prof. P. HARTI, pp 97-111.
2. ~~Hygiene and Sanitation of Pianos Manufactured in a Factory~~ Dr. B. HARTI, Dr. H. HARTI and Dr. I. HARTI, work performed at the IMJ, pp 113-123. Sanitate Publica si Radi: pp 113-123.
3. Medications in the Organism Following the Administration of Atropine by the Digestive Route, Dr. P. HARTI, Sanitate Publica si Radi, pp 113-123. Work performed at the Department of General Hygiene, Catedra de Igiena Generala and the Department of Pharmacology, Catedra de Anatomie fiziologica si fiziologia, of the Faculty of Pharmaceutical Sciences (Institute of Medicine-Pharmacy) pp 113-123.
4. ~~Examination of the Urine from the Skin under the Working Conditions of the Metal Works~~ Dr. P. HARTI, Sanitate Publica si Radi, pp 113-123.
5. Hygiene and Sanitation Considerations on the Pain Relieving Machine of Hunt Machine, Dr. N. HARTI, D. HARTI, M. HARTI, P. HARTI, I. HARTI and P. HARTI, work performed at the IMJ, pp 113-123.
6. Effect of Improved Hygiene Conditions on Matter Toxic and Mold, Dr. P. HARTI and Dr. P. HARTI, work performed at the Department of Food Hygiene, Catedra de Igiena Alimentara, Institutul National de Cercetari Stiintifice (Institute of Medicine-Pharmacy) pp 113-123.
7. Contributions to the Study of Water Supply in Brasov, Dr. A. HARTI, Prof. A. HARTI and Dr. H. HARTI, work performed at IMJ, pp 113-123.

PEPESCU, Leonid, MD.

Bucharest, Romania, No 11, Dec 63, p 15

"Light and Health."



BARHAD, B.; PETRESCU, L.

Respiratory tests during inhalation of dusts. Fiziol. norm. pat.
10 no.5:471-476 S-O '64.

1. Institutul de igiena si protectia muncii, Sectia igiena muncii.

SAGER, O., membru corespondent al Academiei R.P.R.; PETRESCU, N.;
VASILESCU, N.; BROSTEANU, E.R.; GOLDHAMMER, L.

Electroencephalographical study of hypertensive disease. Bul.
stiint., sect. med. 7 no.1:37-49 Jan-Mar '55.

(HYPERTENSION, manifestations
EKG)

(ELECTROENCEPHALOGRAPHY, in various diseases
hypertension)

PETRESCU, M.; OLARU, C.; ENESCU, V.

Arterial hypertension of unilateral renal origin. Probl. ter.,
Bucur 3:59-68 1956.

(HYPERTENSION, etiol. & pathogen.
kidney dis., unilateral, relation to renal pressor reflex)
(KIDNEY DISEASE, complications
hypertension, arterial, caused by unilateral renal dis.,
relation to renal pressor reflex)

PETRESCU, Mircea, Dr.; OLARU, Cornelia, dr.; VLAD, Aurel, dr.

Study of a case of chronic leukemic reticulo-histiocytosis with hyperglobulinemic purpura. Med. int., Bucur. 8 no.2: 269-277 Apr-May 56.

1. Lucrare facuta in Clinica medicala a Spitalului, Colentina.
(RETICULOENDOTHELIOSIS, case report
reticulohistiocytosis, chronic leukemic, with
hyperglobulinemic purpura)
(PURPURA NONTHROMBOPENIC, case report
hyperglobulinemic, with reticulohistiocytosis)

PETRESCU, M., dr.; OLARU, Cornelia; ROXIN, T., dr.

Radioactive phosphorus (P^{32}) therapy of polycythemia. Med.int..
Bucur. 8 no.6:841-852 Oct 56.

(POLYCYTHEMIA, therapy
radiophosphorus)
(PHOSPHORUS, radioactive
ther. of polycythemia)

FLORIANSCU, M.

LUPU, N. Gh.; PETRESCU, Mircea; OLARU, Cornelia

Concomitant hypertension and ulcerous disease. Probl. ter., Bucur. 8:
7-12 1957.

(HYPERTENSION, complications

peptic ulcer, case reports)

(PEPTIC ULCER, complications

hypertension, arterial, case reports)

PETRESCU, M., Dr.

Hepatolienal syndromes and hypersplenism. Med. int., Bucur.
9 no.2:163-172 Feb 57.

1. Lucrare efectuata in Clinica I medicala a Spitalului
"Colentina" (director, acad. N. Gh. Lupu).

(LIVER CIRRHOSIS

splenic, pathogen. & pathol.)

(HYPERSPLENISM, compl.

liver cirrhosis, pathogen. & pathol.)

PIRESCU, Mircea, Dr.; PAPAZIAN, Maria, Dr.; OLARIU, Camelia, Dr.

1-(4-dimethanesulfonylphenyl)pyridine therapy of chronic leukemic myeloses.
Rev. int., sucur. 9 no. 104-709 May 57.

2. Lucrare efectuate la Clinica medicala a Spitalului Colentina, Bucuresti.

(LEUKEMIA, MYELOID), therapy
busulfan

(BUSULFAN, therapy
leukemia, myeloid)

PETRESCU, M., dr.

A problem in the leukemias: etio-pathogenesis and classification.
Med. int., Bucur. 9 no.6:803-814 June 57.

(LEUKEMIA
etiolog. & classif.)

PETRESCU, Mircea; STANESCU, S.; BERONIADE, A.; SUTIANU, A.

Renal diabetes. Med. int., Bucur. 9 no.8:1222-1230 Aug; 57.

1. Incrãgere efectuatã in Clinica I Medicalã a Spitalului "Colentina"

Director acad. N. Gh. Lupu.

(GLYCOSURIA

renal, patogen., ther. & case report)

RUMANIA / General Problems of Pathology. Experimental Treatment. U-5

Abs Jour : Ref Zhur - Biol., No 10, 1958, No 46905

Author : Petrescu, Mircea; Papazian, Ripsinia; Olaru, Cornelia.

Inst : Not given

Title : Treating Chronic Leukemic Myeloses by 1.4-dimethanesulfonyl-oxybutane (Myleran).

Orig Pub : Med. interna, 1957, 9, No 5, 699-709

Abstract : In 14 cases of chronic leukemic myelosis myleran (I) was used. (I) proved to be highly effective and it improved the general wellbeing of patients. (I) is most effective during the initial stages of the disease (without history of previous myleran treatment). However, satisfactory results were also obtained in some neglected cases. In cases where acquired resistance to X-Ray therapy existed, irradiation sensitivity was restored after myleran was administered. In acute myeloblastic forms of leukemia, however, myleran is completely ineffective.

Card 1/1

42

PETRESCU, M. Dr.; PAPAZIAN, R. Dr.; OLAHU, C., Dr.

Therapy of acute leukemia with 6-mercaptopurine. Med. int., Bucur.
10 no.3:433-438 Mar 58.

1. Lucrare efectuata in Clinica I Medicala (Director acad. N. Gh. Iupu).
(LEUKEMIA, therapy
6-mercaptopurine)
(MERCAPTOPURINE, ther. use
leukemia, acute)

PETRESCU, M., dr.

Vitamins B 6: their importance in physiopathology and therapy.
Med. int., Bucur. 11 no.11:1755-1758 N '59.
(VITAMIN B 6)

LUPU, N.Ch., acad.; PETRESCU, M.; RUNCAN, V.

Indications, contraindications and results of splenectomy. Stud.
cercet. med. intern. 2 no.1:7-19 '61.
(SPLEEN surgery)

GEORGESCU, A.; VULPESCU, Sonia; PETRESCU, M.; GEIB, R.; GROZEA, P.;
DUMITRIU, L.

Unusual radiological aspects of malignant reticulosis. (Pulmonary
localizations of malignant lymphogranulomatosis). Stud. cercet.
med. intern. 2 no.3:341-349 '61.
(LUNG NEOPLASMS radiography) (HODGKIN'S DISEASE radiography)

PETRESCU, M.; OLARU, C.; SIGHETEA, E.; GEIB, R.; GROZEA, P.; GEORGECECU, A.;
VULPESCU, S.

Clinical forms of malignant lymphogranulomatosis. Stud. cercet. med.
intern. 2 no.6:801-809 '61.
(HODGKIN'S DISEASE)

ZAMFIRESCU-GHEORGHIU, M.; VELICAN, D.; PETRESCU, M.; GROZIA, P.; SIGETIA, E.

Contributions to the study of the enzymatic pattern of normal and pathological lymph nodes. Rev. sci. med. 6 no.3/4:217-220 '61.
(HODGKIN'S DISEASE chemistry) (LYMPHADENITIS chemistry)
(LYMPH NODES chemistry) (SUCCINIC DEHYDROGENASE chemistry)
(CYTOCHROMES chemistry)

ZAMFIRESCU-GHEORGHE, Ion; IONESCU, I.; G. I. I.; G. I. I., Romania
SIAB 117, Sibiu; SIAB 117, Sibiu.

Variations in the concentration of ceruloplasmin in the serum
of malignant lymphoproliferative disorders. Stud. Serent. Med. Int. St. I.
no. 3:243-248, 1971.

GEIB, R.; SIGHETEA, Elena; PETRESCU, M.; GROZEA, P.; ROXIN, T.

Comparative study of different therapeutic methods in malignant lymphogranuloma (Hodgkin's disease). Stud. cercet. med. intern. 3 no.1:95-111 '62.

(HODGKIN'S DISEASE therapy) (ANTINEOPLASTIC AGENTS therapy)
(ADRENAL CORTEX HORMONES therapy) (RADIOTHERAPY)

GEIB, R.; PETRESCU, M.; GROZEA, P.; SIGHETEA, Elena; OLARU, Cornelia;
ROXIN, T.

Contribution to the therapy of neoplastic reticulopathies. Stud.
cercet. med. intern. 3 no.5:623-630 '62.

(LYMPHOSARCOMA)	(SARCOMA, RETICULUM CELL)
(LYMPHOMA, GIANT FOLLICULAR)	(MULTIPLE MYELOMA)
(RETICULOENDOTHELIOSIS)	(ANTINEOPLASTIC AGENTS)
(ADRENAL CORTEX HORMONES)	(RADIOTHERAPY)

ZAMPIRESCU-GHEORGHIU, Marcela; PETRESCU, M.; GROZEA, P.; GOCIU, Mariana;
SIGHETEA, Elena; CIOBANU, Florina

Contribution to the study of serum pyruvic acid in some malignant
blood diseases. Stud. cercet. med. intern. 3 no.6:749-753 '62.

(PYRUVATES) (LEUKEMIA) (HODGKIN'S DISEASE)
(MULTIPLE MYELOMA) (SARCOMA, RETICULUM CELL)
(LYMPHOSARCOMA) (MYXOSARCOMA)

ZAMFIRESCU-GHEORGHIU, Marcela; PETRESCU, M.; GROZEA, P.;
MIHAILESCU, Eugenia; GOCIU, Mariana; SIGHETEA, Elena

Contribution to the study of glutathionemia in some malignant
hemopathies. Stud cercet med intern 4 no.3:361-366 '63.
(GLUTATHIONE) (LEUKEMIA) (HODGKIN'S DISEASE)
(RETICULOENDOTHELIOSIS) (ERYTHREMIC MYELOSIS)
(ANEMIA, MYELOPHTHISIC) (ANEMIA, ERYTHROBLASTIC)
(MULTIPLE MYELOMA) (ANGIOSARCOMA)

ZAMFIRESCU-GHEORGHIU, Marcella; PETRESCU, M.; GROZEA, P.;
GOCIU, Mariana; SIGHETEA, Elena

Research on some enzyme tests in several malignant hemopathies.
Stud. cercet. med. intern. 4 no.4:483-487 '63.

(HODGKIN'S DISEASE) (LEUKEMIA)
(ERYTHREMIC MYELOSIS) (SARCOMA, RETICULUM CELL)
(LYMPHOSARCOMA)

PETRESCU, M.; OLARU, Cornelia; SIGHETEA, Elena; GROZEA, P.; GEIB, R.;
GOCIU, Mariana

Study of the clinical forms of malignant reticulosis. Stud.
cercet. med. intern. 4 no.6:781-793 '63

*

PETRESCU, M.

GEORGESCU, G; PETRESCU, M.

"The disease of pines manifested by the reddening of the needles and caused by Brunchorsetia destruens Eriks." p. 19 (Revista Padurilor, Vol. 67, No. 9, Sept. 1952, Bucuresti).

SO: Monthly List of East European Accessions, Vol.3, No.2 Library of Congress Feb 54 Uncl

FETRESCU, M.; GEORGESCU, C.

"A parasite (*Gloeosporium ulmicola* Miles) of the fruit of the elm".
p. 106, (REVISTA PADURILOR, Vol. 69, No. 3, Mar. 1954, Bucuresi, Rumania)

SO: Monthly List of East European Accessions, (EEAL), LC, Vol. 3,
No. 12, Dec. 1954, Uncl.

PETRESCU, M.; GEORGESCU, C.

"Contribution to knowledge of parasitic and saprophytic mushrooms of the red oak (*Quercus borealis* Michx)", p. 390. (REVISTA PADURILOR, Vol. 69, no. 9, Sept. 1954. Bucuresti, Rumania).

SO: Monthly list of East European Accessions, (EEAL), IC. Vol. 4, No. 5, May 1955, Uncl.

ROMANIA/Plant Diseases. Diseases of Forest Species.

0

Abs Jour: Ref Zhur-Biol., No 5, 1958, 20660.

Author : Petrescu, Mircea...
Inst : Rumanian Academy.
Title : Anthracnosis of Ligustrum vulgare L. Seedlings,
Caused by the Glomerella cingulata (Stone) fungus.

Orig Pub: Bul. stiint. Acad. RPR, Sec. biol. si stiinte
agric., 1956, 8, No 4, 755-768.

Abstract: A description is given of the disease symptoms on
privet plants of various sizes. Data are given
on the morphology and biology of the bearer.
It is recommended that the soil be treated with
a 1% formaline solution 8-10 days before sowing
and that the seeds be disinfected with this same
solution for five minutes. The plants should be

Card : 1/2

PETRESCU, M.

Contributions to the study of the disease caused by *Discosia pini* Heald to resinous seedlings which have been soaked under the snow. p. 36.

ANALELE ROMINA-SOVIETICE. SERIA AGRICULTURA
Vol. 10, No. 3, May/June 1956, Rumania

SOURCE: East European Accessions List, Library of Congress, Vol. 5, No. 10, October 1956.

PETRESCU, M.; GEORGESCU, C.

Rust of larch needles caused by the fungus Malacosporidium betulinum
(Pers.) Kleb. p. 96.

(REVISTA PADURILOR. Vol. 71, no. 2. Feb. 1957. Rumania)

SO: Monthly List of East European Accessions (EEAL) LC, Vol. 6, no. 7, July 1957, Uncl.

Page 78

PETRESCU, M.;TUTUNARU, V.;GEORGESCU, C.

Lesions on the species Thuja and Chamaecyparis made by late frosts, and the fungi accompanying them. p. 291.

STUDII SI CERCETARI DE BIOLOGIE. SERIA BIOLOGIE VEGETABILIE. Bucuresti.
Vol. 10, no. 3, 1958.

Monthly List of East European Accessions (EFAI) LC, Vol. 9, no. 1, January 1960.

Uncl.

PETRESCU, V.

Contributions to the knowledge of the micromycetes of forest cultures. p. 381.

STUDII SI CERCETARI DE BIOLOGIE. SERIA BIOLOGIE VEGETALA. Bucuresti. Rumania.
Vol. 10, no. 4, 1958.

Monthly List of East European Accessions (BEAI) LC, Vol. 9, no. 1, January 1960.

Uncl.

DOBROCHAYEV, A.; ^cPETRESCU, M.

Expansion of the textile industry in the Rumanian People's Republic.
Izv.vys.ucheb.zav.;tekh.tekst.prom. no.4:3-12 '60. (MIRA 13:9)

1. Moskovskiy tekstil'nyy institut.
(Rumania--Textile industry)

PETRESEV, M.

COUNTRY : USSR
CATEGORY :
REF. JOUR. : RZBiol., No. 19, 1958, No. 87278
AUTHOR : Petresev, M.
INST. :
TITLE : Viticulture and wine-making of the USSR
People's Republic
ORIG. PUB. : Vinodelnye i vinogradarstve USSR, 1958,
No 2, 39-40
ABSTRACT : No abstract.

CARD: //

133

RUMANIA / Chemical Technology, Chemical Products and Their
Application. Food Industry.

H-28

Abs Jour : Ref Zhur - Khimiya, No 5, 1959, No. 17457

Author : Trifu, I.; Petrescu, M.

Inst : Not given

Title : Experiments Involving Tobacco Drying by Infra-Red Rays

Orig Pub : Lucrarile Inst. cercetari aliment., 1958, 2, 265-274

Abstract : Experiments conducted on the drying of tobacco leaves
(of the Gimpats, Virginia, Brant, Banat, Yalomitza
varieties) established the fact that at a distance of 45
cm from the infra-red light source the leaves surface is
heated up to 65 - 70°. Good results are obtained when
irradiation is applied at intervals (3 min. on 3 min. off),
and also when central stem of a leaf is either removed or
crushed. With infra-red drying the losses are decreased
by 1 - 2%. The absorption of O₂ by tobaccos is not

Card 1/2

PETRESKU M.

PETRESKU, M., kandidat ekonomicheskikh nauk.

Development of railroad transportation in the Rumanian People's
Republic. Zhel.dor.transp. 39 no.8:79-82 Ag '57. (MLRA 10:9)
(Rumania--Railroads)

~~SECRET~~ M.I. [Petrescu, M.I.], kand.ekon.nauk

Plan for the electrification of the Rumanian People's Republic.
Elek.sta.29 no.3:81-82 Nr '58. (MIRA 11:5)
(Rumania--Electrification)

PETRESCU, M. I.

PETRESCU, M. I., kand. ekon. nauk

Electrification of the Rumanian People's Republic. Elek. sta.
31 no. 2: 81-82 F '60. (MIRA 13:5)
(Rumania--Electrification)

Distr: 4E20/4E30

3
2

Spectrographic determination of germanium and indium in minerals. I. Buziacu and M. Petrescu. *Acad. rep. populare Romine, Stiinta constructiilor*, 3, 509-59 (1958).—The Ge was detd. in Cu concentrates, and the In in Zn concentrates. The Ge occurred in amts. of 0.003-0.08%. The Cu minerals and the standards were mixed with powd. C in the ratio 2:1, then were evapd. as anode in a d.-c. arc of 9 amp., the samples volatilized completely in 2 1/2 min. The standards were trixits. of the sulfides of Zn, Cu, Pb, and Fe in the proportions anticipated in the natural mineral concentrates. The Ge was introduced as GeS₂ which had been copptd. with CuS. The lines used were Ge 2651.17 and Fe 2428.20 A., and with the background correction one gets a working curve which is linear and reproducible for the range from 0.003-0.08% Ge, and the max. error of the detns. was ±7.4% of the true Ge assay. For the In analyses the mineral was brought in soln., the soln. was freed from Fe and Mn, and the In was then copptd. with Al₂O₃. The Al₂O₃ which contained the In from the mineral and also the Al₂O₃ from the samples were mixed with CoO as internal standard and with spectroscopically pure graphite; the mixt. was then volatilized as anode in a d.-c. arc of 9 amp. The total volatilization required 3 min. Al₂O₃ was chosen to carry the In, because In would occur naturally in the original mineral associ. with Al₂O₃. The lines In 3256.09 and Co 3260.00 A. were used, furnishing a working curve in which log C as a function of ΔS was linear and reproducible in the region 0.01-1% In, and the max. error of the detns. was ±9% relative. Werner Jacobsen

S/137/62/000/004/196/201
A154/A101

AUTHORS: Petrescu, Maria, Trită, Venora

TITLE: Determination of indium in some subproducts of zinc metallurgy by spectrographic means

PERIODICAL: Referativnyy zhurnal, Metallurgiya, no. 4, 1962, 9 - 10, abstract 4K57 ("Studii si cercetări metalurgie Acad. RPR", 1961, 6, no. 1, 51 - 66, Rumanian; Russian, French summaries)

TEXT: Description is given of a spectrum analysis of In in metallic Pb, which is a secondary product of refining Zn, conducted with the use of a Feissner spark generator and a spectograph Q 24: V = 12,000 v, L = 0.8 mH, C = 4,500 pf and I = 1.30 amp. The upper electrode is a copper rod, - the lower electrode being the analyzed metallic Pb. Spacing between the electrodes is 2 - 5 mm. The analytical pair of lines is In - 3,256.09, Pb 3,262.35. The range of determinable indium concentration lies within 0.006 - 0.1%. Description is given of a method of determining In in a solution. A batch of metallic Pb, containing 0.5 - 50 mg In is dissolved in 15 ml of concentrated HCl + 5 ml of concentrated HNO₃.

Card 1/2

S/137/62/000/004/195/201
A154/A101

AUTHORS: Petrescu, M., Triță, Venera

TITLE: Spectrographic dosing of indium in some subproducts of zinc metallurgy

PERIODICAL: Referativnyy zhurnal, Metallurgiya, no. 4, 1962, 9, abstract 4K56
("Rev. roumaine métallurg.", 1961, 6, no. 2, 229 - 242, English)

TEXT: There is no text. [Abstracter's note]

Card 1/1

OLARU, Fl., ing.; GRIGORE, Livia, ing.; PETRESCU, Maria, ing.; MAVROMATI, V. ing.

Processing of the sulfurous complex concentrates of heavy
nonferrous metals in rotating furnaces. Rev. chimie Min.
petr. 12 no.8:445-458 Ag'61

ENESCU, St., ing.; PETRESCU, M., ing.; ALEXIU, I., ing.

Aspects of fatigue phenomena occurring in reinforced concrete elements.
Rev transport 9 no.10:435-442 0 '62.

OLARU, F.; TRIANDAF, Angela; PETRESCU, Maria

Short rotary furnaces and their utilization in the metallurgy of nonferrous metals. Pt. 1. Rev chimie Min petr 14 no. 11/12:655-660 N-D'63.

TRIANDAF, Angela; OLARU, Fl.; PETRESCU, Maria

Short rotary furnaces and their utilization in the metallurgy
of nonferrous metals. Pt. 2. Rev chimie Min petr 15 no.2:
85-90 F '64.

L 10484-66

ACC NR: AP6003544

SOURCE CODE: RU/0011/65/001/0016/0023

AUTHOR: Petrescu, M.--Petresku, M. (Engineer)

44
B

ORG: none

TITLE: Influence of a low-frequency harmonic signal on the free oscillations in an L-C circuit with alloyed pn junction capacitance

SOURCE: Automatica si electronica, v. 9, no. 1, 1965, 16-23

TOPIC TAGS: harmonic oscillation, harmonic analysis, free oscillation, low frequency, electronic circuit, pn junction, electric capacitance

ABSTRACT: The author discusses the subject from the theoretical point of view, then describes the construction of an analog model of the system and compares the experimental results with those predicted on a theoretical basis. Orig. art. has: 18 figures, 5 formulas. [JPRS]

SUB CODE: 09, 20 / SUBM DATE: none / OTH REF: 002 / SOV REF: 005

HW
Card 1/1

UDC: 621.372.2; 621.3.012.8; 537.311.33

SIGHETEA, Elena, dr.; PETRESCU, M., dr.; GEIB, R., dr.; GOCIU, Mariana, dr.;
MARINESCU, Speranta, dr.; MIHAILESCU, Eugenia, dr.

Considerations on the pathogenic mechanism of anemias in acute
leukoses. Med. intern. (Bucur.) 16 no.10:1195-1200 0'64

1. Lucrare efectuata la Institutul de medicina interna al Academiei
Republicii Populare Romine (director: acad. N. Gh. Lupu).

16(?)

SOV/2-59-4-11/14

AUTHOR: Petrescu, M.

TITLE: "The Statistical Yearbook of the RNR 1958"

PERIODICAL: Vestnik statistiki, 1959, Nr 4, pp 84-87 (USSR)

AUTHOR: This is a review of the above-mentioned book which is a Rumanian language book "Anuarul Statistic al R.P.R., 1958", Directia centrala de statistica, Bucuresti, 1958, 317 p. There is 1 table and 1 Rumanian reference.

Card 1/1