

P/014/62/041/012/005/005  
D204/D307

A study of a continuous ...

chlorobenzenes (rich in the 1, 2, 4-isomer); the quantities of 1, 2, 4, 5- and 1, 2, 3, 4-tetrachlorobenzene formed increased with time, becoming considerable after ~50 hrs. A certain loss of catalyst activity took place with time. Slightly higher yields of the tetrachlorobenzenes were obtained with the other catalysts. With Carbopol Z-Extra complete utilization of HCH was possible at 300°C for feed rates of 0.5 - 1 kg/hr. At 250°C, with ~0.83 kg of HCH/kg catalyst.hr, a little HCH was found in the product and the yield of trichlorobenzenes was ~87%. The latter figure tended to fall with temperature, e.g. to 85% at 300°C, but the yields of tetrachlorobenzenes became higher. The catalysts were poisoned by deposition of  $\alpha$ -HCH on their surface, but could be regenerated with acetone. Repeated regeneration led however to crumbling. In the absence of catalyst, at 300°C, the main product was 1, 2, 4-trichlorobenzene (~80% yield). It is concluded that the proposed process is fully satisfactory and the active life of the catalyst is sufficiently long.

ASSOCIATION: Katedra Technologii Organicznej II Politechniki  
Card 2/3

ORLOWSKI, M

POLON

✓ Titrimetric determination of cholesterol. M. Orłowski  
 and J. Simon (Akad. Med. Wrocław, Poland). *Acta  
 Biochim. Polon* 1, 231-3 (1954). — Cholesterol (I) extd. from  
 blood and other biol. material by the Schoenheimer and  
 Sperry method (C.A. 28, 8762<sup>a</sup>) is pptd. with digitonin;  
 directly for free I and after sapon. for total I detn. The  
 pure ppt. is dissolved in MeOH and treated with brominating  
 reagent (II). The Br adds quantitatively to the C<sub>5</sub>-C<sub>6</sub>  
 double bond and is detd. iodometrically. To prep. II,  
 dissolve 1 ml. Br in 100 ml. satd. NaBr in MeOH and dil.  
 3.5 ml. soln. in 100 ml. NaBr in MeOH. Values obtained  
 by this method differ from other methods by 1.9%.  
 I. Z. Roberts

CH  
A SH

ORŁOWSKI, Marian (Wrocław, ul. Hercena 14 m. 2.)

Serum cholinesterase activity in cases of circulatory insufficiency.  
Polski tygod. lek. 13 no. 16:588-591 21 Apr 58

1. Z III Kliniki Chorób Wewnętrznych A.M. we Wrocławiu; kierownik:  
prof. E. Szczeklik.

(CARDIOVASCULAR DISEASES, blood in,  
cholinesterase (Pol))

(CHOLINESTERASE, in blood,  
in cardiovasc. dis. (Pol))

SZCZEKLIK, B., ORLOWSKI, M. , JANIAKOWA, A.

Biochemical principles of early diagnosis of arteriosclerosis.

I. Behavior of blood lipids in arteriosclerosis. Polski tygod. lek. 13  
no.19:701-705 12 May 1958

1. (Z III Kliniki Chorob Wewnętrznych A.M. we Wrocławiu; kierownik:  
prof. dr E. Szczeklik).

(ARTERIOSCLEROSIS, blood in,  
lipids, diag. value (Pol))

(LIPIDS, in blood,  
in arteriosclerosis, diag. value (Pol))

SZCZEKLIK, Edward; JANIĄKOWA, Alina; ORLOWSKI, Marian; BOGDANIKOWA, Beata

Biochemical bases of the early diagnosis of atherosclerosis. II. Behavior of various coagulation factors & serum proteins in atherosclerosis. Polski tygod. lek. 13 no.21:781-788 26 May 58.

1. (Z III Kliniki Chorob Wewnętrznych Akademii Medycznej we Wrocławiu; kierownik Kliniki: prof. Dr Edward Szczeklik) Adres: Wrocław, ul. Pasteura 4.

(ARTERIOSCLEROSIS, blood in  
coagulation factors & blood proteins, diag. value (Pol))

(BLOOD COAGULATION  
factors in arteriosclerosis, diag. value (Pol))

(BLOOD PROTEINS, in various dis.  
arteriosclerosis, diag. value (Pol))

EXERPTA MEDICA Sec 6 Vol 13/2 Internal Med. Aug 59

4269. THE SERUM ALDOLASE ACTIVITY IN CHRONIC HEART FAILURE -  
Aktywność aldolazy surowicy w niewydolności krążenia - Orłowski M.  
III Klin. Chor. Wewn. Akad. Med. Wrocław - POL. TYG. LEK. 1958, 13/22  
(851-853) Graphs 2 Tables 1

The serum aldolase activity was determined in 124 healthy persons and in 61 patients with various heart defects. A normal activity was found in the patients with valvular cardiac diseases in the period of compensation. A statistically significant increase of activity was found in the patients at the time of a growing congestive heart failure. In the cases of an unsatisfactory course ending with death an increase of serum enzyme activity, sometimes to more than 20 times the normal value, was observed. The improvement of the patient's condition is usually accompanied by a decrease of activity of the serum enzyme. The normal values or those but inconsiderably increased were observed in congestive (cardiac) pseudo-cirrhosis of the liver if the state of circulation was not aggravated.

ORIOWSKI, Marian (Wroclaw, ul. Hercena 11 m 2)

Phosphohexoisomerases in cerebrospinal fluid. Polski tygod. lek. 13  
no.37:1421-1423 15 Sept 58.

1. (Z pracowni biochemicznej III Kliniki Chorob Wewnetrznych A. M. we  
Wroclawiu; kierownik: prof. dr B. Szczeklik i z Kliniki Neurologicznej  
A. M. we Wroclawiu; kierownik: prof. dr R. Arend).

(TUBERCULOSIS, MENINGEAL, cerebrospinal fluid in  
phosphohexoisomerases (Pol))

(ISOMERASES, in cerebrospinal fluid  
phosphohexoisomerases, in meningeal tuberc. (Pol))

LUKASIK, S.; ORLOWSKI, M.

Method of determination of lipoprotein lipase activity in the blood;  
preliminary report. Polski tygod. lek. 13 no.42:1643-1645 20 Oct 58.

1. (Z III Kliniki Chorob Wewnętrznych A. M. we Wrocławiu; kier. prof.  
dr E. Szczekliak). Adres: Wrocław, ul. Pasteura 4 III Klin. Chor. Wewn.  
(LIPASES, in blood  
lipoprotein lipase determ., method (Pol))



BX BRFTA . . . . . Sec. 6 Vol 13/12 Internal red. Dec 59

6825. THE SIGNIFICANCE OF SERUM CHOLINESTERASE ACTIVITY (SCA) IN SOME INTERNAL DISEASES - Znaczenie badania aktywności cholinesteraz surowicy w niektórych chorobach wewnętrznych - Cirowski M. and Kotlarek-Haus S. III Klin. Chorób Wew. Akad. Med., Wrocław - POL. TYG. LEK. 1958, 13/44 (1713-1719) Graphs 4 Tables 5

SCA was determined in a group of healthy persons (127) and in patients with spontaneous hypertension, liver diseases, kidney diseases, malignant neoplasms and diabetes. In liver diseases the lowest values were obtained in neoplasms and in liver cirrhosis; in stasis and in epidemic hepatitis the decrease of SCA was not uniform, depending on the time of duration of the morbid process. In spontaneous hypertension (8 subjects) the enzyme activity was on the average considerably higher than in healthy persons. An inconsiderable tendency to SCA increase was shown parallel to the increase of systolic pressure. In myocardial infarcts (9 cases), a decrease of the enzyme activity was observed in the first days after infarction. In the patients in whom circulatory failure developed, a decrease of SCA activity persisted longer. In 17 cases of far-advanced neoplastic process a decrease of the enzyme activity was noted and this decrease depended in the first place on the impairment of the liver and emaciation. In kidney diseases a considerable increase of SCA was noted in nephrosis, a normal level in nephritis and a considerable decrease in uraemia (17 cases). In diabetes SCA was greatly increased (13 cases). The significance of SCA in the diagnostics of these diseases is discussed.

SZCZEKLIK, Edward; LUKASIK, Soweryn; ORLOWSKI, Marian

Blood lipoprotein lipase activity in arteriosclerosis. Polski tygod.  
lek. 14 no.7:297-300 16 Feb 59.

1. Z III Kliniki Chorob Wewnętrznych A. M. we Wrocławiu;  
kierownik: prof. dr Edward Szczeklik. Adres: Wrocław, ul. Pasteura
4. III Klinika Chorob Wewnętrznych.  
(ARTERIOSCLEROSIS, blood in  
lipoprotein lipase (Pol))  
(LIPASES, in blood  
lipoprotein lipase in arteriosclerosis (Pol))

AREND, Rudolf; ORLOWSKI, Marian; HULANICKA, Krystyna

Phosphohexoseisomerase activity in cerebrospinal fluid. Polski tygod.  
lek. 14 no.8:345-347 23 Feb 59.

1. Z Kliniki Neurologicznej A.M. we Wroclawiu; kierownik : prof. dr E.  
Szczeklin. Adres: Wroclaw, ul. Kraszewskiego 25. Klinika Neurologiczna.

(ISOMERASES, in CSF

phosphohexoseisomerase in CNS disord. (Pol))

(CENTRAL NERVOUS SYSTEM, dis.

blood phosphohexoseisomerase activity (Pol))

SZCZEKLIK, Edward; JANIAKOWA, Alina; ORLOWSKI, Marian

Correlation of changes in lipids & various blood coagulation factors  
in arteriosclerosis. Polski tygod. lek. 14 no.10:417-421 9 Mar 59.

1. Z III Kliniki Chorob Wewnętrznych Akademii Medycznej we Wrocławiu;  
kierownik Kliniki: prof. dr Edward Szczeklik) Adres: Wrocław, ul.  
Pasteura 4. III Klin. Chor. Wewn. A.M.

(ARTERIOSCLEROSIS, blood in  
lipids, relation to blood coagulation factors (Pol))

(LIPIDS, in blood  
in arteriosclerosis, relation to blood coagulation  
factors (Pol))

(BLOOD COAGULATION,  
factors in arteriosclerosis, relation to blood lipids (Pol))

LUKASIK, S.; ORLOWSKI, M.

A micromethod for the determination of lipoprotein lipase activity  
in the blood. Polskie arch.med.wewn. 30 no.7:975-976 '60.

1. Z III Kliniki Chorob Wewnatrznych A.M. we Wroclawiu Kierownik:  
prof. dr med. B. Szczeklik  
(LIPOPROTEIN LIPASE blood)

SZCZEKLIK, E.; LUKASIK, S.; ORLOWSKI, M.

Behavior of the post-heparin bipolytic activity curve of the blood.  
Polskie arch.med. wewn. 30 no.7:976-978 '60.

1. Z III Kliniki Chorob Wewnętrznych A.M. we Wrocławiu Kierownik:  
prof. dr med. E.Szczeklik  
(LIPOPROTEIN LIPASE blood)

ORLOWSKI, M; SZEWCZUK, A.

Colorimetric determination of  $\gamma$ -glutamyl transpeptidase activity in human serum and tissues with synthetic substrates. Acta biochim. polon. 8 no.2:189-200 '61.

1. The Third Medical Clinic, School of Medicine, and Department of Biochemistry, Institute of Immunology and Experimental Therapy of the Polish Academy of Sciences, Wrocław  
(PROTEASES chem)

ORLOWSKI, M.  
SURNAME, Given Names

Country: Poland

Academic Degrees: Not given

Presumed Ludwik Hirszfeld Institute of Immunology and Experimental Therapy (Instytut Immunologii i Terapii Doswiadczalnej im. Ludwika Hirszfelda), Polish Academy of Sciences (PAN--Polska Akademia Nauk), Wroclaw; Director: Prof. Stefan SLOPEK, Dr.

~~Source:~~ Warsaw, Postępy Higieny i Medycyny Doswiadczalnej, Vol XV, No 4, ~~Date:~~ 1961, pp 444-446.

Data: "Metabolic Studies on the Chrysoidin Hepatoma in Mice." English abstract of article originally published in Acta Union Internationale Contre le Cancer 1960, 16, 1057.

Authors:

ALBERT, Z.

MEDRAS, K.

ORLOWSKI, M.

690 981643



ORLOWSKI, M.  
SURNAME, Given Names

3

Country: Poland

Academic Degrees: Not given

Affiliation: Presumed Ludwik Hirszfeld Institute of Immunology and Experimental Therapy (Instytut Immunologii i Terapii Doswiadczalnej im. Ludwika Hirszfelda), Polish Academy of Sciences (PAN--Pol: Akademia Nauk), Wroclaw; Director: Prof. Stefan SLOPEK, Dr.

Source: Warsaw, Postepy Higieny i Medycyny Doswiadczalnej, Vol XV, No 4, 1961, pp. 449-452.

Data: "The Use of  $\alpha$ -(N- $\gamma$ -DL-Glutamyl)-Aminonitriles for the Colorimetric Determination of a Specific Peptidase in Blood Serum." English abstract of article originally published in Clin. Chim. Acta 1960, 5, 680.

Authors:  
SZEW CZUK, A.  
ORLOWSKI, M.

GPO 982643

SZCZEKLIK, Edward; ORLOWSKI, Marian; SZEWCHUK, Apolinary

Activity of serum  $\gamma$ -glutamylotranspeptidase as a new enzymatic test in liver diseases. Comparison with other enzymatic tests. Polski tygod. lek. 16 no.14:503-510 3 Ap '61.

1. Z III Kliniki Chorob Wewnętrznych A.M. we Wrocławiu; kierownik: prof. dr Edward Szczeklik i z Zakładu Biochemii Instytutu Immunologii i Terapii Doswiadczałnej PAN; kierownik: prof. dr T. Baranowski.

(LIVER FUNCTION TESTS) (TRANSFERASES blood)

SZCZEKLIK, Edward; ORLOWSKI, Marian; LUKASIK, Seweryn

Comparative study on the activity of certain enzymes in pathological fluids and blood. Polski tygod. lek. 16 no.25:941-945 19 Je '61.

1. Z III Kliniki Chorob Wewnetrznych A.M. we Wroclawiu; kierownik: prof. dr Edward Szczeklik.

(ENZYMES metab) (EXUDATES AND TRANSUDATES chem)

HUNGARY

SZCZEKLIK, E. Dr., CRJOWSKI, M. Dr., SZENCZUK, A. Dr.; Polish Academy of Sciences, III Internal Medicine Clinic, Biochemical Institute, Immunological and Experimental Therapeutic Institute (Lengyel Tudományos Akadémia, III. belklinikai, Biokémiai Intézet, Immunológiai és Kísérletes Therápiai Intézet)\*Professor: SZCZEKLIK, Wroclaw.

"Serum Gamma-Glutamine-Transpeptidase Activity in Liver Diseases."

Budapest, Orvosi Hetilap, Vol 903, No 46, 16 Nov 62, pages 2201-2203.

Abstract: [Authors' summary modified] The authors determined the serum GGTP activity in various liver diseases and compared them with the aldolase, phosphoesterase isomerase and alkaline phosphatase values. In viral and chronic hepatitis GGTP values are moderately elevated. In cases of obstructive jaundice, biliary cirrhosis, cholangitis, in primary liver tumors and liver metastases very high values were obtained. Very high values without jaundice are indicative of liver carcinoma. The mechanism of the increase of activity of GGTP is discussed. The differential diagnostic significance of GGTP determination is stressed.

[This paper is published, as part of an exchange program, from the Polaki Tygodnik Lekarski.] [3 Soviet-bloc, 5 Western references]

171

\*[Polish versions not given]

ORLOWSKI, Marian

The role of  $\gamma$ -glutamyl transpeptidase in the internal diseases  
clinic. Arch. immun. ther. exp. 11 no.1/2:1-61 '63.

1. III Clinic of Internal Diseases, School of Medicine, Wroclaw;  
Department of Oncology, Institute of Immunology and Experimental  
Therapy, Polish Academy of Sciences, Wroclaw.

(TRANSFERASES) (ENZYME TESTS)  
(BLOOD CHEMICAL ANALYSIS) (URINE) (BILE)  
(LIVER DISEASES) (BILIARY TRACT)  
(HEPATITIS, INFECTIOUS) (HEPATITIS)  
(JAUNDICE, OBSTRUCTIVE) (CHOLELITHIASIS)  
(CHOLECYSTITIS) (CHOLANGITIS)  
(LIVER CIRRHOSIS) (PANCREATITIS)  
(NEOPLASMS) (CARDIOVASCULAR DISEASES)  
(KIDNEY DISEASES) (INTERNAL MEDICINE)

SZCZEPKLIK, E.; ORLOWSKI, M.; LEKASIK, B.; SPODERSKA, T.

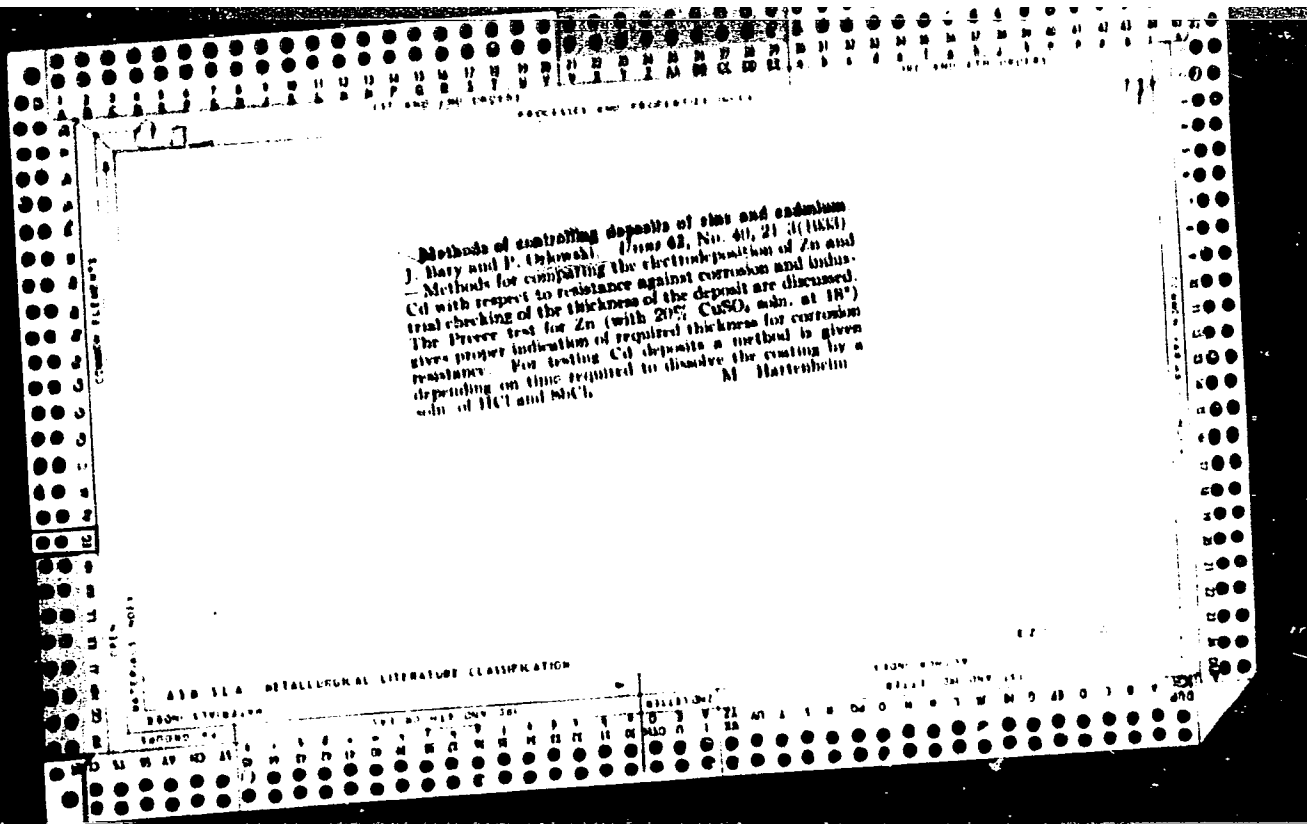
Gamma-glutamyl transpeptidase activity of the blood serum in  
pancreatic diseases. Pol. tyg. lek. 19 no.39:1484-1487  
28 S '64

1. Z III Kliniki Chorob Wewnętrznych Akademii Medycznej we  
Wrocławiu (Kierownik: prof. dr. E. Szczepklik).

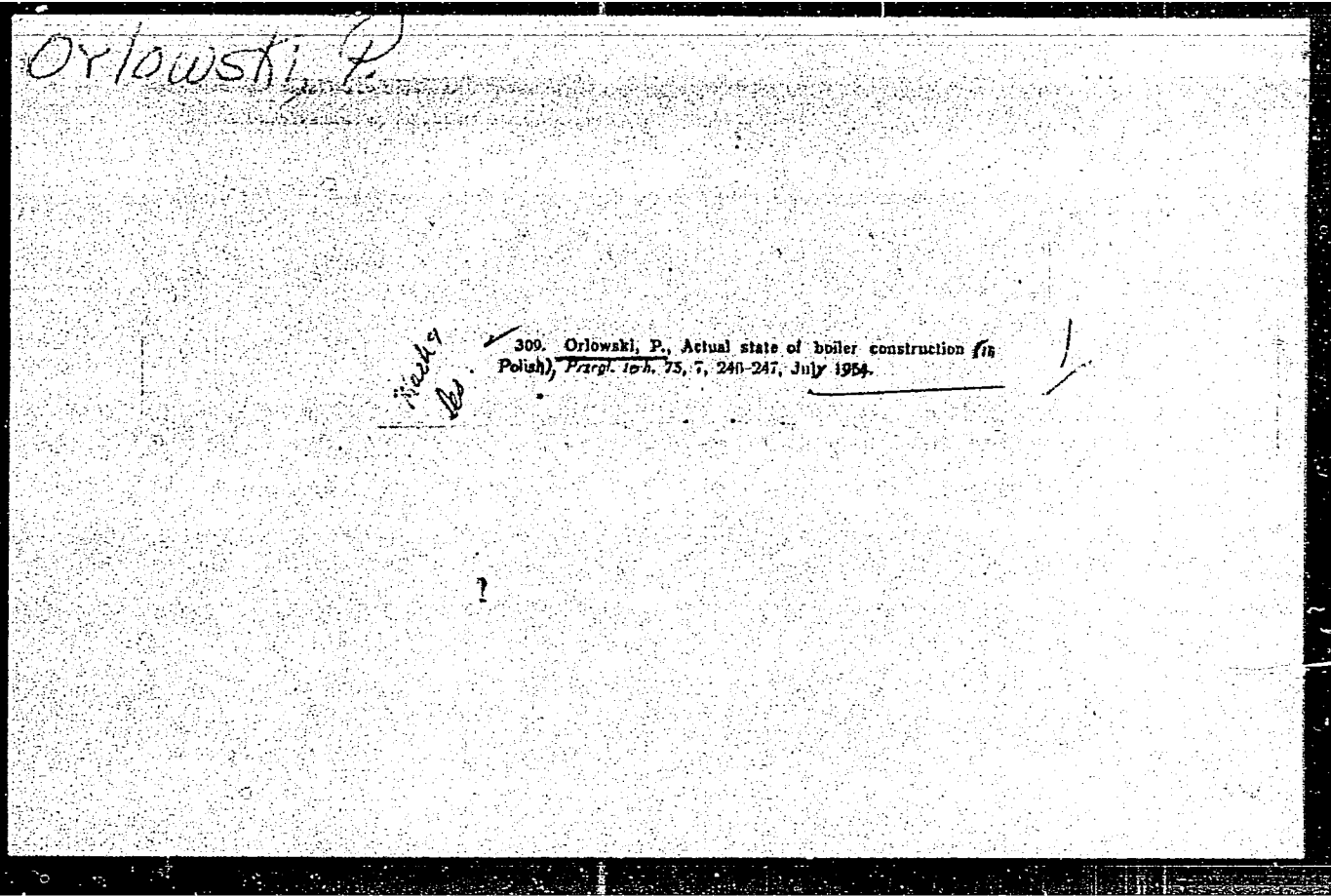
CZICHON, Herbert, mgr.; MONDRY, Jan, inż.; ORLOWSKI, N.

Composition of microcrystalline zinc sheets for one-step etching process. Poligrafika 13 no.8:3-6 Ag '61.

1. Centralne Laboratorium Poligraficzne, Warszawa (for Czichon). 2. Zakłady Cynkowe "Silesia" (for Mondry, Orłowski).







5665. CYCLONE FURNACES. Orłowski, P. (Energetyka (Power, Poland), 1956, (3), 118-123; from Pol. Tech. Abstr., 1957, (1), 4591). The construction and mode of operation of cyclone furnaces is discussed, and operational results are given. The efficiency of boilers with cyclone furnaces is about 92%, and the electric power produced per metric ton of coal is 10 to 15 kWh more than with plain pulverized coal-fired boilers. The range of permissible load variations is from 50 to 110%. Since 90% of the ash is retained in the combustion chamber, the flue gases contain little ash, so that the boiler tubes can be more closely pitched and gas velocities can be higher; the heating surfaces, the dimensions of the boiler units and the capacity of the gas-cleaning equipment can therefore be smaller. One drawback of cyclone furnaces is that the ratio of fuel to air must be kept constant. B.C.U.R.A.

ORLOWSKI, P.; SYCHOWICZ, B.

Partition walls in steam boilers. (Conclusion) p. 600.

PRZEGLAD MECHANICZNY. (Stowarzyszenie Inzynierow i Technikow Mechanikow  
Polskich) Warszawa, Poland, Vol. 18, no. 18, Sept. 1959.

Monthly list of East European Accessions (EEAI) LC, Vol. 9, no. 1, Jan. 1960.

Uncl.

ORLOWSKI, Piotr, prof.

Minimum rating of a boiler with 3 stage evaporation. Przegl mech 20  
no.22:690-691 '61.

1. Politechnika Warszawska.

(Boilers)

ORLOWSKI, Piotr, prof., dipl. ing. (Poland)

Standardization of industrial boilers. Ipari energia 5 no.3:  
69 M '64.

ORLOWSKI, Piotr, prof. mgr inż.

Steam generators in nuclear power stations. Przegl mech 23 no.  
13:370-371, 374-375 10 J1 '64.

1. Head, Institute of Steam Boilers, Technical University,  
Warsaw.

ORLOWSKI, Ryszard, mgr. inż., Warszawa

Development planning in the field of air communication in  
the USSR. Techn lotn 16 no.10:250-251 0 '61.

ORLOWSKI, S.

Maszyny i narzędzia w gospodarstwach chłopskich. [2. wyd.] Warszawa, Państwowe  
Wydawn. Rolnicze i Leśne, 1956. 302 p. (Biblioteka rolnika) [Farm machinery  
and implements. 2ed. ed.]

DA

Not in LIC

SO: Monthly List of East European Accessions (MELA) 10, Vol. 6, No. 10, October 1957. Uncl.



ORLOWSKI, S.

Archaeocyatha from the Middle Cambrian of the Holy Cross Mts  
(Gory Swietokrzyskie). Bul Ac Pol chim 7 no.5:363-368 '59.

(EEAI 9:9)

1. Laboratory of Paleozoic, Polish Academy of Sciences. Presented  
by J.Samsonowicz  
(Poland--Archaeocyatha)

ORLOWSKI, S.

Ellipsocephalidae from the lower beds of the Middle Cambrian in the vicinity of Sandcierz, Central Poland. Bul Ac Pol chim 7 no.7: 515-520 '59. (REAI 10:4)

1. Laboratory of Paleozoic, Geological Institute, Polish Academy of Sciences. Presented by J.Samsonowicz.  
(Poland--Ellipsocephaloides)

ORLOWSKI, Stanislaw

Education and training of workers as a primary task of labor establishments. Praca zabezp spol 3 no.12:12-16 '61.

MICHNIAK, Ryszard; ORLOWSKI, Stanislaw

Remarks on the stratigraphic table of Precambrian and Cambrian in  
the Gory Swietokrzyskie Mountains. Przegl geol 11 no.11:475-479  
N '63.

ORLOWSKI, Stanislaw

Middle Cambrian in the Gory Swietokrzyskie Mountains. Acta geol  
Pol 14 no.4: 547-560 '64.

1. Department of Historical Geology of the University, Warsaw.

ORLOWSKI, T.

Certain physicochemical properties of so-called denaturated calf's plasma. Polski tygod. lek. 5 no. 47-48:1648-1652 27 Nov 50.  
(CML 20:6)

1. Of the Second Clinic of Internal Diseases of the Warsaw University (Head--Prof. Witold Orłowski, M.D.) and of the First Clinic of Internal Diseases of Warsaw Medical Academy (Head--Prof. Andrzej Bieracki, M.D.).

ORLOWSKI, T.

Function of renal glomeruli and tubules in water metabolism in normal and pathologic conditions. Poznan. Tow. przyjaciel nauk. Wydz. lek. 9 no.9:1-69 1952. (CLML 23:4)

1. Of the First Internal Clinic of Warsaw Medical Academy and of the Second Internal Clinic of Warsaw University.

ORLOWSKI, T.;KLECZKOWSKI, B.;SZAJEWSKI, J.

Hemoglobin level, erythrocytes count, and colorimetric index of the blood in normal subjects. Polski tygod. lek. 8 no.1:1-4 5 Jan 1953.  
(CJML 24:3)

1. Of the First Clinic of Internal Diseases (Head--Prof. A. Biernacki, M. D.) of Warsaw Medical Academy.



ORLowski, T.

✓ 1955. Kidney function in diffuse glomerulonephritis. T. Orłowski  
*Bull. Acad. Polon. Sci.*, 1955, 3, 193-196 (Internal Diseases Clinic  
No. 1, School of Medicine, Warsaw).—Kidney function tests by the  
Popper-Mandel-Mayer creatinine method were done in 21 cases of  
acute and subacute glomerulonephritis and in 54 cases of chronic  
glomerulonephritis. The importance of the test in kidney disease  
is strongly emphasized. E. C. BUTTERWORTH.

POLAND / General Biology. Individual Development Sex Cells. B-42

Abs Jour : Ref Zhur - Biol., No 14, 1953, No 61872

Author : Orlowski, Tadeusz

Inst :

Title : Effects of Antistin Upon the Living Capacity of Sperm Cells.

Orig Pub : Med. weteryn., 1955, 11, No. 19, 618-619

Abstract : No abstract given.

Card 1/1

ORLOWSKI, Tadeusz

Kidney function in certain diseases of the liver and the biliary tract as shown by the results of the chromogenic endogenous test. Polskie arch.med.wewn. 25 no.3a:563-569 '55.

1. I Klinika Chorob Wewnętrznych AM w Warszawie. Kierownik: prof. dr med. A Biernacki.

(KIDNEY FUNCTION TEST

endogenous chromogen in dis.of liver & Biliary tract)

(LIVER, diseases

kidney funct.test, endogenous chromogen)

(BILIARY TRACT, diseases

kidney funct.test, endogenous, chromogen)

ORLOWSKI, Tadeusz

Determination of creatinine in biological fluids using Pepper's  
Mendel's and Mayer's methods. Polskie arch.med.wewn. 25 no.4:  
719-729 '55.

1. Z Kliniki Zdrowego Czlowieka Instytutu Naukowego Kultury  
Fizycznej Kierownik: doc.dr Med. T. Orłowski, i z Kliniki  
Chorob Wewnętrznych A.M. w Warszawie. Kierownik: prof.dr med.  
A. Biernacki. Warszawa, ul. Dantyska 1 m. 11.  
(CREATININE, determination  
in biol.fluids)

ORLOWSKI, Tadeusz

Introduction to physiology and pathology of the kidneys.  
Polskie arch. med. wewn. 26 no.3:435-440 1956.

1. Z I Kliniki Chorob Wewnętrznych A.M. w Warszawie, Kierownik:  
prof. dr. nauk med. A. Biernacki, Warszawa, Dantyska 1 m. 11.  
(KIDNEYS,  
pathol. & physiol. (Pol))

ORLOWSKI, Tadeusz

Studies on the value of low-protein and high-calory diets in chronic renal insufficiency. Polskie arch. med. wewn. 26 no. 10:1499-1514 1956.

1. Z I Kliniki Chorob Wewnętrznych A.M. w Warszawie Kierownik: prof. dr. nauk med. A. Biernacki. Warszawa, ul. Krzyckiego 9 m. 1.

(GLOMERULONEPHRITIS, therapy,  
diets, low-protein & high-calory (Pol))  
(DIETS, in various diseases,  
low-protein & high-calory diets in glomerulonephritis (Pol))

010201036  
ORLOWSKI, Tadeusz

~~Mesenterial~~, infarction. Polski przegl. chir. 29 no.5:453-458 May 57.

1. Z II Kliniki Chirurgicznej A. M. we Wrocławiu Kierownik: prof. dr Wiktor Bross Praca wpłynęła dnia 10. 7. 1956. Wrocław 14 ul. Sienka 210/3.

(MESENTERIES, infarct,  
(Pol))

ORLOWSKI, Tadeusz, KACZUR, Zdzislaw

Varicose veins of the duodenum as a cause of abundant hemorrhage into the gastro-intestinal tract. Polski tygod. lek. 13 no.10:363-364  
10 Mar 58

1. Z oddzialu Chirurgicznego Wojskowego Szpitala Okregowego ordynator:  
T. Orłowski.

(DUODENUM, varix.

hemorrh., severe, into gastrointestinal tract (Pol))

(GASTROINTESTINAL SYSTEM, hemorrh.

severe, caused by varices of duodenum (Pol))



ORLOWSKI, Tadeusz, MISZERAK Janusz

Case of renal sarcoma. Polski przegl. chir. 30 no.1:65-68 Jan 58

1. Z Oddziału Chirurgicznego Szpitala Wojskowego we Wrocławiu.  
(KIDNEYS, neoplasms  
surg. & follow-up (Pol))

ORLOWSKI, Tadeusz, KACZUR, Zdzisław, CZARNIECKI, Leonław

Treatment of cavernous angioma. Polski przegl. chir. 30 no.2:161-165  
Ma '58

1. Z Oddziału Chirurgicznego 4. Wojskowego Szpitala Okręgowego  
Ordynator: dr T. Orłowski, Konsultant: prof. dr. W. Bross. Wrocław,  
ul. Słazna 210 m.3.

(ANGIOMA, ther.

single inject. of boiling water in cavernous angioma of  
rectus abdom. musc. (Pol))

(ABDOMINAL WALL, neoplasms

angioma, cavernous, of rectus musc., ther., single inject.  
of boiling water (Pol))

CELOWSKI, Tadeusz

Preliminary studies on the effect of chlorothiazide of Polish production. Polskie arch.med.wewn. 29 no.5:645-653 '59.

1. Z I Kliniki Chor. Wewn. A. M. w Warszawie Kierownik prof.  
dr n. med. A. Biernacki.  
(CHLOROTHIAZIDE ther)

BUDZYNSKI, Bogdan; ORLOWSKI, Tadeusz

Angioma of the small intestine. Polski przegl. chir. 31 no.6:705-708  
June 59.

1. Z Oddziału Chirurgicznego Wojskowego Szpitala Okręgowego we Wrocławiu  
Ordynator Oddziału: dr T. Orłowski  
(INTESTINE, SMALL, neopl.) (HEMANGIOMA, surg.)

ORLOWSKI, Tadeusz; CHOJECKI, Zygmunt; RYMKIEWICZ, Halina

Renal extraction of paraaminohippuric acid, creatinine and urea under experimental conditions in rabbits. Acta medica polona 2 no.4:323-336 '61.

1. I Clinic of Internal Diseases, Medical Academy, Warsaw Director:  
Prof. Andrzej Biernacki M.D.

(PARAAMINOHIPPURIC ACID urine)  
(CREATINE AND CREATININE urine)  
(UREA urine) (KIDNEYS physiol)

ORLOWSKI, Tadeusz

Commonly used diuretics. Kardiol.pol. 5 Suppl:55-57 D '61.  
(DIURETICS)

GROLOWSKI, Tadeusz; CHOJECKI, Zygmunt; RYMKIEWICZ, Halina

On renal extraction of para-aminohippuric acid, creatinine and urea in experimental conditions in rabbits. Polskie arch. med. wewnetrz. 31 no.1:33-44 '61.

1. Z I Kliniki Chorob Wewnetrznych AM w Warszawie Kierownik: prof. dr n. med. A. Biernacki.

(KIDNEYS physiol) (PARAAMINOHIPPURIC ACID metab)  
(CREATINE AND CREATININE metab) (UREA metab)

ORLOWSKI, Tadeusz; AJEWSKI, Zygmunt; RYMKIEWICZ, Halina; SICINSKI, Alfred

Attempted therapy of chronic renal insufficiency by washing isolated intestinal loops. Polskie arch. med. wewn. 31 no.6:857-864 '61.

1. Z I Kliniki Chorob Wewnetrznych AM w Warszawie Kierownik: prof. dr nauk med. A. Biernacki.

(GLOMERULONEPHRITIS ther) (JEJUNUM)



ORLOWSKI, Tadeusz

Unusual course of strangulated inguinal hernia. Polski przegl.  
chir. 33 no.10:1151-1153 '61.

1. Z Oddziału Chirurgii Ogólnej Szpitala Wojskowego we Wrocławiu  
Ordynator: dr T. Orłowski.  
(HERNIA INGUINAL compl)

ORLOWSKI, Tadeusz

Andrzej Biernacki. Nauka polska 10 no.3:25-30 My-Je '62.

1. Akademia Medyczna, Warszawa.

\*

BADURA, Roman; NADOLSKI, Zbigniew; ORLOWSKI, Tadeusz

Effect of trypsin on joint components and possibilities for its use in clinical conditions. Chir. narz. rúchu ortop. polska 27 no.1:93-97 '62.

1. Z Kliniki Chirurgii Weterynaryjnej WSR Wroclawiu Z Oddzialu Chirurgii Urazowej Wojskowego Szpitala Okregowego we Wroclawiu Z Oddzialu Chirurgii Ogolnej Wojskowego Szpitala Okregowego we Wroclawiu.

(JOINTS pharmacol)

(TRYPSINS pharmacol)

BADURA, Ryszard; KASZUBKIEWICZ, Czeslaw; ORLOWSKI, Tadeusz

Experimental suspension of the kidney with tephlon mesh in ptosis.  
Polski przegl. chir. 34 no.6a:557-561 '62.

1. Z Weterynaryjnej Kliniki Chirurgicznej WSR we Wroclawiu Kierownik:  
doc. dr R. Badura Z Katedry Anatomii Patologicznej Wydz. Weterynaryjnego  
WSR Kierownik: prof. dr A. Zakrzewski Z Oddzialu Chirurgii Ogolnej  
Okregowego Szpitala Wojsk. we Wroclawiu Ordynator: dr T. Orłowski.  
(KIDNEY surg)

POLAND

ORLOWSKI, Tadeusz and TOMKA, Josef, Surgical Division (Oddział Chirurgiczny), District Hospital (Szpital Okręgowy) in Wrocław (Director ("ordynator"): Dr. med. T. ORLOWSKI)

"On the Treatment of Fat embolisms."

Warsaw-Krakow, Przegląd Lekarski, Vol 19, Ser II, No 8, 28 Aug 63, pp 343-345

Abstract: [Authors' English summary modified] The authors discuss the etiopathogenesis of fat embolisms and the clinical manifestations of this disease. They report on a case with severe clinical course (loss of consciousness for eight days), where complete cure was attained with the use of active phospholipids. They also call attention to the need for prophylactic administration of active phospholipids in every kind of trauma, and especially of fractures. There are 13 references, of which three (3) are Polish and the others in German.

1/1

ORLOWSKI, Tadeusz

Pathogenesis of acute anuria and oliguria. Pol. arch. med.  
wewn. 33 no.5:547-550 '63.

(ANURIA)

MISZERAK, Janusz; ORLOWSKI, Tadeusz

Two unusual cases of foreign nodules in the bladder. Pol. przegl. chir. 35 no.11: Supplement: 1233-1238 N°63

1. Z Oddziału Urologicznego Szpitala im. L. Rydygiera w Częstochowie (ordynator: dr. J. Miszerak) i z Oddziału Chirurgicznego Wojskowego Szpitala Okręgowego we Wrocławiu (ordynator: dr. T. Orłowski).

\*

ORLOWSKI, Tadeusz

Experimental biliogenic shock and its control. Pol. przegl.  
chir. 35 no.7/8:757-760 '63.

1. Z Oddzialu Chirurgii Ogolnej Szpitala Okregowego we  
Wroclawiu Ordynator: dr T. Orłowski.  
(SHOCK) (BILE) (BLOOD PRESSURE)  
(PROCAINE) (INFUSIONS, PARENTERAL)  
(AZAMETHONIUM COMPOUNDS) (PHARMACOLOGY)



ORLOWSKI, T.

Hydrogen-ion excretion in renal insufficiency. Pol. arch. med.  
wewnet. 34 no.7:821-822 '64.

ORLOWSKI, T.

Arzyżaj Biezmiekt : 1903. 2r3. pol. anar. med. weznet. 12 no.2:  
1125-1134 164

DRAK, Juliusz, ORLOWSKI, Tadeusz; PIFGZA, Stanislaw; SOJNY, Wieslaw

Benign tumors of the small intestine. Pol. przeg. 1962, 36  
no. 7:895-899. 1p. 162.

1. Z III Kliniki Chirurgicznej Akademii Medycznej we Wrocławiu  
(Kierownik, prof. dr B. Lesiorny) i z IV Szpitala Okręgowego we  
Wrocławiu (Ordynator, dr T. Orłowski).

DRAK, Juliusz; ORLOWSKI, Tadeusz

Intestinal invagination in adults. Pol. tyg. lek. 20 no.4:142-143  
25 Ja '65.

1. Z III Kliniki Chirurgicznej Akademii Medycznej we Wroclawiu  
(Kierownik: prof. dr. Z. Jeziczo) i z Oddzialu Chirurgicznego  
Szpitala Okregowego we Wroclawiu (Ordynator: dr. med. T.Orlowski).

COUNTRY : [illegible]  
CATEGORY : [illegible]  
REF. NUM. : [illegible]

TITLE : [illegible]

ORIG. PUB. : [illegible]  
[illegible text block containing several lines of faint, mostly illegible text]

DATE: [illegible]

ORLOWSKI, W.

Computation of stresses in a bent reinforced-concrete rod of the circular section in Phase II. p. 202.

Vol. 12, no. 6, June 1955  
INZYNIERIA I BUDOWNICTWO  
Warszawa

Source: Monthly List of East European Accessions (EEAL), LC, Vol. 5, No. 2  
Feb. 1956

ORLOWSKI, W.

ORLOWSKI, W. A bearing for prestressing in the static system. p. 217.  
Vol. 11, no. 9, Sept. 1956. DRUGOWI TWC. Warszawa, Poland.

SOURCE: East European Admissions List (EAL), Vol. 1, no. 4--April 1957

ORLOWSKI, Witold J.; ZAJFEN, Marian; WOSTRZYCY, Stanislaw; RYBA, Jozef

Role of the orbicularis oculi muscle in some atrophic diseases of the skin. Pol. tyg. lek. 19 no.14:499-503 30 Mr 1964.

1. Z Oddzialu Chorob Oczu (ordynator: doc. dr. med. W.J. Orłowski) z Oddzialu Chorob Skory (ordynator: lek. med. M. Zajfen) i z Pododdzialu Chirurgii Szczekowej w Warszawie (kierownik: lek. stom. J. Ryba).



ORLOWSKI, W.

Correlation of the heart and circulatory system in chronic circulatory insufficiency. Polski tygod.lek. 5 no.27-28:1046-1049 10 July 50.  
(GLML 20:5)

ORLOWSKI, W.J.

Practical method of tissue therapy. Klin. oczna 23 no.3:175-181  
1953. (CIWL 25:5)

1. Subconjunctival injections of patient's own conserved blood plasma.

LEDOCHOWSKI, Zygmunt; LEDOCHOWSKI, Andrzej; BOGUCKA, Maria; ORLOWSKI, Włodzimierz; WOJTANIA, Jerzy; DUNAJ, Tadeusz; ADAMCZEWSKI, Benedykt

Research on tumor inhibiting compounds. VI. Synthesis of some  
4-(dimethylaminoalkylamino)-quinolines. Roczniki chemii 34 no.3/4:  
953-957 '60. (EEAI 10:3)

1. Katedra Technologii Srodkow Leczniczych Politechniki, Gdansk.  
(Tumors) (Aminodimethylaminoquinoline)  
(Alkyl groups)

ORLOWSKI, WITOLD.

MEDICINE.

ORLOWSKI, WITOLD. Nauka o chorobach wewnetrznych. Warszawa, Panstwowy Zaklad  
Wydawn. Lekarskich.

Vol. 1, 1958.

DNL. Not in DLC.

Monthly Index of East European Acquisitions (AEEI) Vol. 3, no. 1, Jan. 59. LC.

ORLOWSKI, Witold (Warszawa, 1, ul. Dzielna 15a m.23)

Subconjunctival injections of preserved blood serum in eye burns.

Polski tygod. lek. 9 no.33:1036-1039 16 Aug 54.

(EYE, wounds and injuries,

burns, ther., subconjunctival inject. of preserved blood)

(BURNS, .

eye, ther., subconjunctival inject. of preserved blood)

(SEROETHERAPY, in various diseases,

eye burns, subconjunctival inject. of preserved blood)

ORLOWSKI, Witold J.

Case of bilateral nasal hemianopsia. Klin. oczna 24 no.2:153-159  
1954.

1. Z Kliniki Chorob Oczu Akademii Medycznej w Lodzi. Kierownik:  
prof. dr med. J. Sobanski.  
(HEMIANOPIA,  
\*nasal, bilateral)

ORLOWSKI, Witold J.

The problem of pterygium. Klin.oczna 24 no.4:310-314 '54.

1. Z Oddziału Ocznego Wojskowego Szpitala Okręgowego Ordyna-  
tor: dr med. P. Segal.

(PTERYGIUM, surg.  
methode)

ORLOWSKI, Witold J. , Warszawa 1, ul. Dzielna 15 a, m. 23.

Polish ophthalmologic literature published during 1953. Klin.  
ocna 25 no.1:63-64 1955.  
(OPHTHALMOLOGY,  
in Poland, bibliog.)



ORLOWSKI, Witold J.

Effect of so-called side compression on changes in the field of vision. Klin.oczna 25 no.2:97-102 1955.

1. Z Kliniki Chorob Oczu A.M. w Lodzi Kierownik: prof.dr. med. J. Sobanski. Warszawa 1, ul.Dzielna 15 a.m.23.

(EYE, physiology,

eff. of side mechanical compression on field of vision)

(VISION,

field, eff. of side mechanical compression of eye)

ORLOWSKI, Witold J.; Warszawa 1, ul.Dzielna 15 a,m.23

Polish ophthalmologic literature. Klin.oczn. 25 no.3:220-222  
1955.

(OPHTHALMOLOGY,  
bibliog)

ORLOWSKI, Witold J.; RUTKOWSKI, Slawomir; NIEWIADOMSKI, Roman.

General akinesia in ophthalmological surgery; preliminary communication. Klin.oczna 25 no.4:261-266 1955.

1. Z Oddzialu Ocznego - Ordynator: dr. med. W.J.Orlowski i z I Oddzialu Chirurgicznego - Ordynator: dr. med. W.Zagorski. Wojkowego Szpitala Okregowego.

(MUSCLE RELAXANTS, therapeutic use,  
in eye surg., prod. of general akinesia)

(EYE, surgery,  
musc. relaxants in, prod. of general akinesia)

ORLOWSKI, Witold J.; WEKKA, Zdzislaw

Increased pH in the aqueous humor in sodium hydroxide burns of the eye. Klin. oczna 26 no.2:117-126 1956.

1. Z Oddzialu Ocznego Ordynator: dr. med. W. J. Orłowski i z Pracowni Klinicznej Wojskowego Szpitala Okręgowego. Kierownik: dr. I. Lewicz, Warszawa 31, ul. Dzielna 15a, m. 23.

(EYE, wounds and injuries,

sodium hydroxide burns, aqueous humor pH in (Pol))

(HYDROXIDES, injurious effects,

sodium hydroxide eye burns, aqueous humor pH in (Pol))

(HYDROGEN ION CONCENTRATION,

aqueous humor in sodium hydroxide eye burns (Pol))

(AQUEOUS HUMORS,

pH in sodium hydroxide eye burns (Pol))

ORLOWSKI, Witold J.

Polish ophthalmological literature published during 1955.  
Klin. oczna 26 no.3:253-256 1956.

1. Warszawa 31, ul. Dzielna 15a, m. 23.  
(OPHTHALMOLOGY,  
bibliog. (Pol))

ORLOWSKI, Witold J.; NIEWIADOMSKI, Roman

Objective criterion on the depth of anesthesia in general surgery. Polski tygod. lek. 12 no.10:364-366 4 May 57.

1. (Z Oddzialu Ocznego; ordynator: dr. med. W.J. Orłowski i z I Oddzialu Chirurgicznego Wojskowego Szpitala Okregowego; ordynator: dr. med. W. Zagorski). Adres: Warszawa, 31, ul. Dzielna 15a m. 23.

(ANESTHESIA

determ. of anesth. depth, methods (Pol))

ORLOWSKI, Witold J.; WEKKA, Zdzislaw; NOWAKOWSKI, Wladyslaw

Behavior of the chemical content of aqueous humor under the influence of x-rays in experimental conditions. I. Sodium and potassium levels. Klin. oczna 27 no.1:15-25 1957.

1. Z Oddzialu Ocznego Wojskowego Szpitala Okregowego Ordynator:  
dr. med. W.J. Orłowski. Warszawa 31, ul. Dzielna 15a, m. 23.

- (AQUEOUS HUMOR, eff. of radiations on  
x-rays on sodium & potassium levels in rabbits (Pol))
- (ROENTGEN RAYS, eff.  
on sodium & potassium levels in aqueous humor & blood  
in rabbits (Pol))
- (SODIUM  
in aqueous humor & blood, eff. of x-rays in rabbits (Pol))
- (POTASSIUM  
in aqueous humor & blood, eff. of x-rays in rabbits (Pol))

EXCERPTA MEDICA Soc.9 Vol.12/4 1957 April 1958

1996. THE OBJECTIVE CRITERION OF THE DEPTH OF ANAESTHESIA IN GENERAL SURGERY - Obiektywny sprawdzian głębokości znieczulenia w zabiegach ogólnochirurgicznych - Orłowski W. J. and Niewiadomski R. Odd. Ocznego i I Odd. Chir. Wojsk. Szpit. Okręgowego, Warszawa - POL. TYG. LEK. 1957, 12/10 (364-366) Graphs 5

Intraocular tension was investigated in the course of 34 general operations, carried out under anaesthesia by various methods, among others hibernation with hypothermy: (1) All the means which are today at the disposal of the anaesthesiologist are by themselves insufficient for the conduct of operations, as although the impulses induced by the operation do not reach the cerebral cortex, they produce numerous reflexes which are undoubtedly unfavourable to the patient. Accordingly it is necessary to take advantage more fully and widely of local anaesthesia and of blocks. (2) The investigation of the intraocular tension is an objective and very sensitive criterion of the depth of anaesthesia in general surgery operations. The scope of the anaesthesiologist's investigations, besides the examinations of blood pressure, pulse, temperature, respiration, pupil reaction etc., should be enlarged by the intraocular tension test. For this purpose only Fick-Liwszyc's tonometer is satisfactory. It is the most convenient, the easiest in application, and supplies results which are quite adequate for our purposes.



EXCERPAT MEDICA Sec.12 Vol.11/10 Ophthalmology Oct57  
ORLOWSKI W. J.

1544. ORLOWSKI W. J., WEKKA Z. and NOWAKOWSKI W. Odd. Ocznego Wojskowego Szpital. Okręgowego, Warszawa. \* Zachowanie się składu chemicznego cieczy wodnej pod wpływem promieni X w warunkach doświadczalnych. I. Poziom sodu i potasu. Behaviour of the chemical content of aqueous humour under the influence of X-rays in experimental conditions. I. Sodium and potassium levels KLIN. OCZNA 1957, 27/1 (15-25) Graphs 2 Tables 4

Using the flame photometer the authors defined the level of sodium and potassium in the blood serum and in the aqueous humour of twenty-nine rabbits, before and after the irradiation with X-rays. After the irradiation increased permeability for sodium and potassium is seen but in the further course their amounts decrease. The authors explain this phenomenon, by damage of the vascular barrier between the blood and aqueous humour. An extensive literature is added Szmyt - Łódź

ORLOWSKI, Witold, J.

Polish oculist literature. Klin. oczna 27 no.3:301-304 1957.  
(OPHTHALMOLOGY  
in Poland, bibliog. (Pol))

EXCERPTA MEDICA SEC. 12 Vol. 12/8 Opth. Aug. 58

*ORLESTUSKI, W.J.*

1291. BEHAVIOUR OF THE CHEMICAL COMPOSITION OF THE AQUEOUS HUMOR IN EXPERIMENTS UNDER THE INFLUENCE OF X-RAYS. II. THE SUGAR AND PROTEIN LEVEL - Zachowanie się składu chemicznego cieczy wodnej pod wpływem promieni x w warunkach doświadczalnych. II. Poziom cukru i białka - Orłowski W.J., Wekka Z., Bartosiewicz W. and Nowakowski W. Warszawa 31, ul Dzielna 15a m 23 - KLIN. OCZNA 1958, 28/1 (11-18) Graphs 1 Tables 5

The level of sugar does not change after irradiation in normal eyes; the protein level increases, after one and 24 hr. Control examination showed the same after 20 weeks. The experiments were carried out on 17 rabbit eyes. Szmyt - Łódź (XII, 2\*)

EXCERPAT MEDICA Sec.12 Vol.11/10 Ophthalmology Oct57  
ORŁOWSKI W.J.

1709. ORŁOWSKI W.J., Oddz. Ocznego Wojskowego Szpit. Okręgowego. \* Leki rozkurczające naczynia w okulistyce. Dilating drugs in ophthalmology POST.OKULIST. 1956, 3 (207-236) Tables 1 illus 2

The dilating drugs are very helpful in cases when the functional changes are greater than the organic ones. They allow the treatment of the majority of the eye burns conservatively without any surgical intervention. During the use of the modern drugs, for instance hexamethonium or apresoline, one may expect some complications and therefore care is advised. An extensive and important literature is added.

Szmyt - Łódź

~~ORLOWSKI, Witold J.; WEKKA, Zdzislaw; BARTOS LEWICZ, Wladyslaw; NOWAKOWSKI, Wladyslaw~~

Behavior of the chemical components of the aqueous humor during experimental x-irradiation. II. The sugar and protein levels. Klin. oczna 28 no.1:11-18 1958.

1. Z Oddzialu Ocznego. Ordynator: dr med. W. J. Orłowski Z Pracowni Klinicznej Wojskowego Szpitala Okregowego. Kierownik: dr Z. Wekka. Adres autora: Warszawa 31, ul. Dzielna 15a m. 23.

(ROENTGEN RAYS, effects

on protein & sugar levels in aqueous humor of rabbits (Pol))

(AQUEOUS HUMOR, effect of radiations on

x-rays on protein & sugar content in rabbits (Pol))

(PROTEINS, determination

in aqueous humor of rabbits, eff. of exper. x-irradiation (Pol))

(CARBOHYDRATES, determination

sugars in aqueous humor of rabbits, eff. of exper. x-irradiation (Pol))

ORLOWSKI, W.J.; KOROBOWICZ, J.

Case of benign lymphadenosis of the orbit, epibulber region & eyelids with glaucoma. Klin. oczna 28 no.3:307-314 1958.

1. Z Oddziału Ocznego Wojskowego Szpitala Okręgowego Ordynator: dr med. W. J. Orłowski. Adres autora: Wąsoszawa 31, ul. Dzielna 15a m. 23.

(ORBIT, neoplasms

benign lymphadenosis of orbit, epibulbar region & eyelids with glaucoma, case report (Pol))

(LYMPHOMA, case reports

same)

(EYELIDS, neoplasms

benign lymphadenosis of eyelids, orbit & epibulber region with glaucoma, case report (Pol))

ORLOWSKI, Witold J.; MICHNIEWSKA-LEONOWICZ, Janina

Posner-Schlossman syndrome. Klin.oczna 29 no.3:239-246  
'59.

1. Z oddzialu chorob oczu i W.S.O. Ordynator: dr med. W.J.  
Orlowski.

(GLAUCOMA)

ORLOWSKI, Witold J.

First experiments with the enzyme dissolving Zinn's ligament.  
Klin.oczna 29 no.4:249-262 '59.

1. Z oddzialu ocznego I W.S.O. Ordynator: dr med. W.J.Orlcwski.  
(CATARACT EXTRACTION)  
(CHYMOTRYPSINS ther)



ORLOWSKI, Witold J.; MICHNIEWSKA-LEONOWICZ, Janina; CZECHOWSKA, Zofia

Further experimental studies on methods for the treatment of  
burns of the eye. Klin.oczna 30 no.1:79-94 '60.

1. Z oddzialu chorob oczu i WSO Ordynator: dr med. W.J. Orłowski  
i z pracowni anatomii patologicznej Instytutu Hematologii w War-  
szawie. Kierownik: dr med. Z. Czechowska.

(EYE wds.& inj.)  
(BURNS expe.)

ORLOWSKI, Witold J.

The procedure and pre- and postoperative complications in  
mechanical and chemical disinsertion of Zinn's sonule. Klin.  
ocznia 30 no.4:365-379 '60.

1. Z oddzialu chorob oczu i W.S.O. Ordynator: dr med. W.J.Orlowski.  
(CATARACT EXTRACTION statistics)

ORLOWSKI, Witold J.

Progress in glaucoma surgery. Polski tygod. lek. 16 no.30:1162-1166  
J1 '61.

(GLAUCOMA surg)

ORLOWSKI, Witold J.

Surgical treatment of Stilling-Tuerk-Duane syndrome. Klin. oczna 31  
no.1:41-57 '61.

1. Z oddzialu chorob oczu l W.S.O. Ordynator: dr med. W. J. Orłowski.

(OCULOMOTOR MUSCLES dis)