

BEGIN

397

Onesano, D.

ONESANU, D.

A photometric method for the determination of 11 α -hydroxyprogesterone in fermented media. Studii cerc biochimie 5 no.3:453-456 '62.

1. Sectia biosinteze, Institutul de cercetari chimico-farmaceutice, Bucuresti.

ONESANU, D.

A chromatographic method for epicalcortisol determination. Studii
cerc biochimie 6 no.2:231-284 '63.

1. Institutul de cercetari chimico-farmaceutice, Sectia biosintaze.

GAVRILA, I., prof.; COMES, L., conf.; IGNA, M., dr.; ON. SCIUC, I., dr.;
BOTA, R., dr.

Problems of interpretation of sideremia in the diagnosis of
jaundices. Med. intern., Bucur 12 no.11:1619-1627 N '60.

I. Lucrare efectuata in Clinica de boli contagioase, Cluj, director
prof. I. Gavrilă.
(IRON blood) (JAUNDICE diagnosis)

GAVRILA, I., prof.; COMES, L., conf.; MURESANU, T., dr.; UNSCIU, I., dr. ;
NEGOMIREANU, T., dr.

Problems in the diagnosis of food poisoning. Med. intern., Bucur
13 no.4:611-620 Ap '61.

1. Lucrare efectuata in Clinica de boli contagioase Cluj (director:
prof. I. Gavrilă).

(FOOD POISONING diagnosis)

RUMANIA

NEGOITIANU, T., Jr, and CRIBCIU, I., Jr. Work performed at the Professor I. Savrila Clinic for Contagious Diseases (Clinica de Boli Contagioase Prof. I. Savrila), Cluj.

"Associated Chloramphenicol and Anti-Typho-Paratyphoid Vaccine in the Treatment of Typhoid Fever."

Bucharest, Microbiologia, Parazitologia, Epidemiologia, Vol 8, No 5, Sep-Oct 69, pp 491-450.

Abstract Authors' English summary modified: Two different methods of combining TAB vaccine with the complex treatment of typhoid and paratyphoid fever were studied on 50 cases: the so-called classical method with progressive doses at one week intervals, and the "rapid" method at microintervals. Relapses occurred in 10.1 percent of cases with the first method and 4.87 percent with the second. The evolution of specific agglutinins was followed, with variable results recorded. One carrier was discovered among the 50 cases.

Includes 19 references, of which 1 Chinese, 1 German, 5 Russian and 12 Rumanian.

1/1

GAVRILA, I., prof.; COMES, L., dr.; JOCAN, R., dr.; ONESCIUC, I., dr.;
SOLOVIEV, M., dr.

Epidemic hepatitis in cardiac patients. Med. intern. 15 no.11:
1331-1342 N '63.

1. Lucrare efectuata in Clinica de boli contagioase din Cluj
(director: prof. I. Gavrilă).
(HEART DISEASES) (HEPATITIS, INFECTIOUS)

L 33055-66

ACC NR: AP6024237

SOURCE CODE: RU/0005/65/000/006/0225/0229

AUTHOR: Oncescu, Ion--Onchesku, I. (Engineer)

36

ORG: none

B

TITLE: Uninterrupted power feeding for telecommunications equipment

SOURCE: Telecomunicatii, no. 6, 1965, 225-229

TOPIC TAGS: communication equipment, telecommunication, power supply

ABSTRACT: The author discusses the use of redundant power sources in order to assure an uninterrupted power supply for major telecommunications units, pointing out the technical and economic advantages of systems of this type and describing their operation in some detail. Orig. art. has: 7 figures. [JPRS]

SUB CODE: 17, 10 / SUBM DATE: none / SOV REF: 002 / OTH REF: 001

Card 1/1 (la)

UDC: 621.311:621.396.6

1888

ONESCU, T

✓ Kinetics of the decomposition reactions of complex cobalt(III) oxalates in aqueous solutions. I. G. Murgulescu and Tatiana Onescu (Univ. Bucuresti, Roumania). *Z. physik. Chem. (Leipzig)* 214, 238-62(1960).—The velocity consts. of the decompn. reactions in the dark of aq. solns. of $K_3[Co(C_2O_4)_3]$, $K_3[(C_2O_4)_2(CoH_2O)(OH)]$, and $K[Co(C_2O_4)_2(H_2O)_2]$ were detd. at different temps. and the energies and entropies of activation deduced in a known manner. The investigated decompn. reactions are of 1st order. The reaction mechanism is discussed. Friedrich Epstein

H.
2-90af(NB)(may)

JK

ROMANIA

BAIES, I., Prof, Dr., BAIES, Angela, Dr, CONTIU, I., Dr, POP, M., Dr,
MARCIA, D., Dr, ONET, E., Dr, and RUSU, T., Dr, Faculty of Veterinary
Medicine (Facultatea de Medicina Veterinara), Cluj

"Epizootological, Clinical and Therapeutic Prophylactic Studies on Sheep
and Pig Listeriosis"

Bucharest, Revista de Zootehnie si Medicina Veterinara, Vol 16, No 1,
Mar 66, pp 50-59

Abstract: [Authors' English summary modified] A study of several outbreaks
of sheep listeriosis and one of swine listeriosis failed to locate common
precipitating factors. Bacteriologic tests of Oestrum ovis larvae collected
from 40 sheep in active listeriosis outbreaks and 11 sheep with clinically
confirmed cases were all negative. No abortions before or during the out-
breaks were observed in sheep, but they did occur in sows. All treatments
tried were ineffective for diseased sheep; mass treatment of the healthy
animals in a focus with a single large dose of penicillin, moldamin, strepto-
mycin or terramycin, however, immediately stopped the outbreak.
Includes one table, 5 figures and 15 references, of which 5 are Rumanian,
8 Russian and 2 French.

1/1

- 109 -

RUMANIA

BAIES, I., Dr, Prof, CONTIU, I., Dr, MICLEA, E., Dr, ONET, E., Dr, POP, M., Dr, and MOLDOVAN, A., Dr, of the Faculty of Veterinary Medicine (Facultatea de Medicina Veterinara) Cluj.

"Epizootiologic and Anatomic-Clinical Studies on Outbreaks of Aujeszky and Atypical Hog-Cholera Diseases."

Bucharest, Revista de Zootehnie si Medicina Veterinara, Vol 16, No 8, Aug 66, pp 42-48.

Abstract [Authors' English summary modified]: A study of two outbreaks of Aujeszky's disease in young and suckling pigs. The atypical nature of the symptoms is described; the anatomic-pathologic changes were characterized by inconsistent hemorrhagic diathasis. Economic losses as a result of a failure to reach a correct diagnosis promptly are pointed out, on the basis of one of the two described outbreaks in which hog cholera was also found.

Includes 6 figures and 5 references, of which 3 Rumanian and 2 French.

1/1

ONGARO, E.

Automatically maintained constant final pressure of gas
in the low-pressure gas-distributing system in Rome. Gaz.
prom. 6 no. 1:54-56 '61. (MIRA 14:1)
(Rome—Gas distribution)

ONGOYEV, V.M.

Hydraulic coal-cutter sampler. Mat. po geol. i pol. iskop. Sentr.
Kazakh. no. 2:124-128 '62. (MIFA 15:12)
(Coal--Analysis)

ONIANI, D. I. Cand Agr Sci -- "Effect of prolonged use of mineral fertilizers upon certain properties of terra-rossa and subtropical podzolic soils under conditions of tea cultivation." Tbilisi, 1961 (Min of Agr Georgian SSR. Georgian Order of Labor Red Banner Agr Inst). (KL, 4-61, 205)

193
- 223 -

ONIANI, O. G.: Master Agric Sci (Liss) -- "Factors in the effectiveness of potash fertilizers on the tea plantations of western Georgia". Tbilisi, 1959. Published by the Georgian Agric Inst. 20 pp (Georgian Triler of Labor Red Banner Agric Inst), 100 copies (Kl, No 6, 1959, 199)

ONIANI, Sh.I.

Effect of the regulating apparatus on the work of axial flow fans.
Soob.AN Gruz.SSR 19 no.1:71-77 J1 '57. (MIRA 10:11)

1. AN GruzSSR, Institut metalla i gornogo dela, Tbilisi. Predstavleno
chlenom-korrespondentom Akademii G.K.Gedevanishvili.
(Fans, Mechanical)

DZIDZIGURI, A.A.; ONIANI, Sh.I.

Regulating axial fans connected in parallel with the aid of guiding apparatus. Soob. AN Gruz. SSR 19 no.5:605-610 N 197. (MIRA 11:6)

1. Institut metalla i gornogo dela AN GruzSSR, Tbilisi. Predstavleno chlenom-korrespondentom AN F.N. Tavadze.
(Mine ventilation)

ONIANI, Sh. I., Candidate of Tech Sci (diss) -- "Investigation of the use of di-
recting equipment to regulate axial mine ventilators operating in parallel".
Tbilisi, 1959, published by the Acad Sci Georgian SSR. 22 p. (Min Higher Educ
USSR, Order of Labor Red Banner Georgian Polytech Inst Im S. M. Kirov), 1959 copies
(KL, No 21, 1959, 116)

DZIDZIGURI, Archil Amvrosiyevich; MUSKHELISHVILI, Vakhtang Levanovich;
KUTATELADZE, Aslan Aleksandrovich; ONIANI, Shurman Il'ich;
Prinimali uchastiye: MATIKASHVILI, T.Y.; DUFMISHIDZE, N.Sh.;
KERSIEN, I.O., otv. red.; D'YAKOVA, G.B., red.izd-va;
LOMILINA, L.N., tekhn. red.

[Simultaneous operation of mine ventilators] Sovmestnaia
rabota shakhtnykh ventilatorov. Moskva, Gos. nauchno-
tekhn. izd-vo lit-ry po gornomu delu, 1961. 182 p.

(MIRA 15:2)

(Fans, Mechanical) (Mine ventilation)

CONFIDENTIAL

... ..

... ..

DZIDZIGURI, A.A.; UNIANI, Sh.I.; KAPYCHEV, R.A.

Study of the thermophysical properties of the rocks of the
Tkibuli-Sfacri coal deposit. Geob. AN Gruz. SSR 31 no.1:
131-138 31 1983. (MIRA 17:7)

DZIDZIGURI, A.A.; CHIKHI, S.R.; LATSABIDZE, V.G.

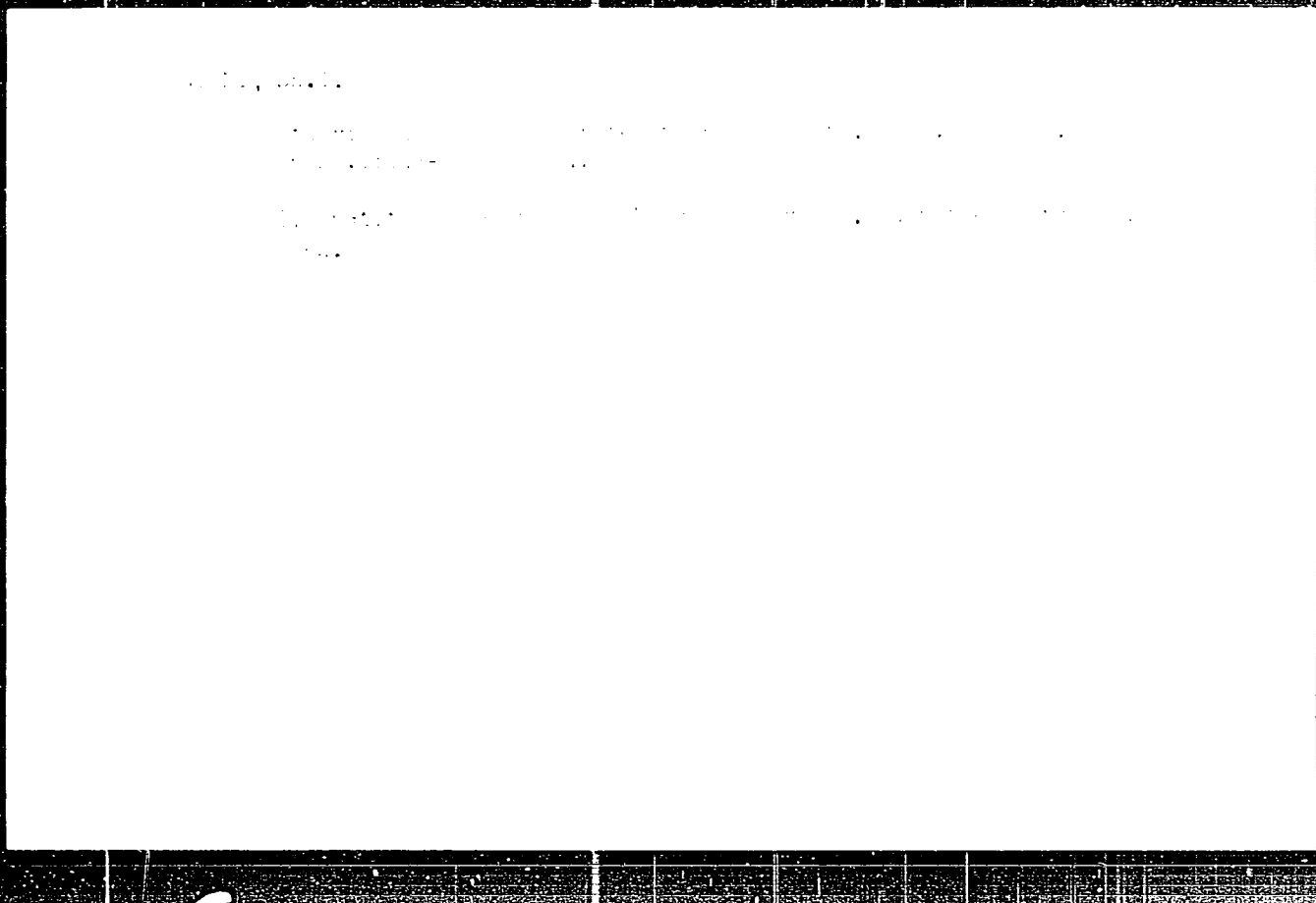
Effect of the relief of the temperature field of the deposit of
of Tbilisi-Chaeri con. deposit. (see. Al. Gruz. 1973, 3, 1-2, 1-2)
(11-018 1-2).

1. Institut geologii i ineni G.A. Tsalukidze Al. Gruz. 1973.
2. Chlen-korrespondent Al. Gruz. S.S.R. (for Dzidziguri).

MIDGITHI, A.A., MAJL, Sr.1.; LATAPILU, . . .

... the ... of ...
... of the Kamsoml'seala ...
Sub. AM Cruz. SER 35 no. 1381-34. An ...

... Institute ...
... ..



1. The first part of the document is a list of names and titles of the members of the committee.

2. The second part of the document is a list of the names and titles of the members of the committee who have been appointed to the various subcommittees.

3. The third part of the document is a list of the names and titles of the members of the committee who have been appointed to the various subcommittees.

ONIANI, T.N.; UNGIADZE, A.A.

Effect of the stretch of muscle on its functional properties.
Soob. AN Gruz. SSR 33 no. 2:453-460 F '64. (MIRA 17:9)

1. Institut fiziologii AN GruzSSR. Predstavleno chlenom-
korrespondentom AN GruzSSR S.P.Narikashvili.

ONIANI, T.N.

Optimum and "pessimum" reactions of nerve-muscle preperates of
crayfish (*Astacus fluviatilis*). Soob. AN Gruz. SSR 17 no.8:745-
752 '56. (MLRA 10:3)

1. Tbilisskiy gosudarstvennyy universitet im. Stalina. Predstavleno
akademikom O. S. Beritashvili.

(CRAYFISH) (MUSCLES) (NERVES)

USSR/Human and Animal Physiology (Normal and Pathological) T
Neuro-Muscular Physiology

Abs Jour : Ref Zhur Biol., No 6, 1959, 26912

Author : Oniani, T.N.

Inst : Academy of Sciences GeorgianSSR.

Title : Regularity of Stimulation Which Spreads Without Decre-
ment in the Motor Nerve Fiber of Crayfish Claw

Orig Pub : Soobshch. AN GruzSSR, 1957, 19, No 6, 723-730

Abstract : The investigations were conducted on a single nerve
fiber of crayfish. The nerve was taken with a length
of not less than 15 mm, i.e., the distance between the
stimulating and efferent electrodes was not less than
15 mm. As a source of stimulation, a relaxation stimu-
lator of direct current (impulses of triangular shape)
was employed. For alteration, 1 or 0.5% solution of

Card 1/2

USSR/ Human and Animal Physiology (Normal and Pathological)
Neuro-Muscular Physiology.

T

Abs Jour : Ref Zhur Biol., No 6, 1959, 26912

novocain was utilized. In cortical stimulations, the nerve fibers responded with maximum excitability, which did not change in further increase of the force of stimulation. In experiments on altered motor nerve of afferent muscle of the claw in the altered part (10 mm) the intensity of excitement decreased in accordance with increase of narcosis. However, this weakened impulse in passing through the narcotized part of the nerve again reached the normal level in entering into the intact part of the nerve. Consequently, motor and inhibitory nerve fibers without decrement.

Card 2/2

- 33 -

... ..
... ..
... ..
... ..
... ..

ONIANI, T.N.

Tonic and tetanic neuromotor units in the crayfish. Soob.AN
Gruz.SSR 24 no.3:343-350 Mr '60. (MIRA 13:7)

1. Tbilisekiy gosudarstvennyy universitet imeni I.V.Stalina.
Predstavleno akademikom I.S.Beritashvili.
(Nervous system--Crayfish)

IOSELIANI, T. K. and ONIANI, T. N. (Tbilisi, USSR)

"The spinal mechanism of general inhibition"

Report submitted to the 7th Intl. Congress of Neurology,
Rome, Italy, 10-15 Sep 61

ONIANI, T.N.

Effect of strychnine on the reflex activity of the spinal cord in
frogs. Soob.AN Gruz.SSR 26 no.3:323-330 Mr '61. (MIRA 14:4)

1. Akademiya nauk Gruzinskoy SSR, Institut fiziologii, Tbilisi.
Predstavleno akademikom I.S.Beritashvili.
(Strychnine) (Spinal cord)

ONIANI, T.N.

Trace hyperpolarization and depolarization in crayfish claw
muscles. Fiziol. zhur. 47 no.4:495-499 Ap '61. (MIRA 14:6)

1. From the Institute of Physiology, Academy of Sciences of the
Georgian S.S.R., Tbilisi.
(MUSCLE) (CRAYFISH) (ELECTROPHYSIOLOGY)

ONIANI, T.N.

Formation of food-motor behavior in dogs under complicated testing conditions. Soob. AN Gruz. SSR 28 no.4:473-476 Ap '62.

(MIRA 18:1)

1. AN Gruzinskoy SSR, Institut fiziologii, Tbilisi. Submitted September 12, 1960.

GNIANI, T.N.

Evolution of the functional differentiation of new ...
Soob. AN Gruz. S.R. 29 no. 4: 737-744. 1961.

MIRA 1211

1. Institut Citologia. AN Gruz. S.R., Tbilisi. Submitted January ...
1961.

ONIANI, T.N.

Relief phenomenon in the neuromuscular apparatus of the crayfish
claw. Fiziol.zhur. 48 no.5:540-544 My '62. (MIRA 15:8)

1. Institut fiziologii AN Gruzinskoy SSR, Tbilisi.
(CRAYFISH) (MUSCLES—INNERVATION)

IOSELIANI, T.K.; ONIANI, T.N.

Effect of strychnine poisoning on the reticular inhibition
of spinal reflexes. Fiziol. zh. SSSR Sechenov 49 no.6:695-700
'63 (MIRA 17:1)

1. From the Institute of Physiology, Georgian S.S.R. Academy
of Sciences, Tbilisi.

IOSELIANI, T.K.; ONIANI, T.N.

Mechanism of pessimal inhibition. Nerv. sist. 1963:13-16
(1963:18:1)

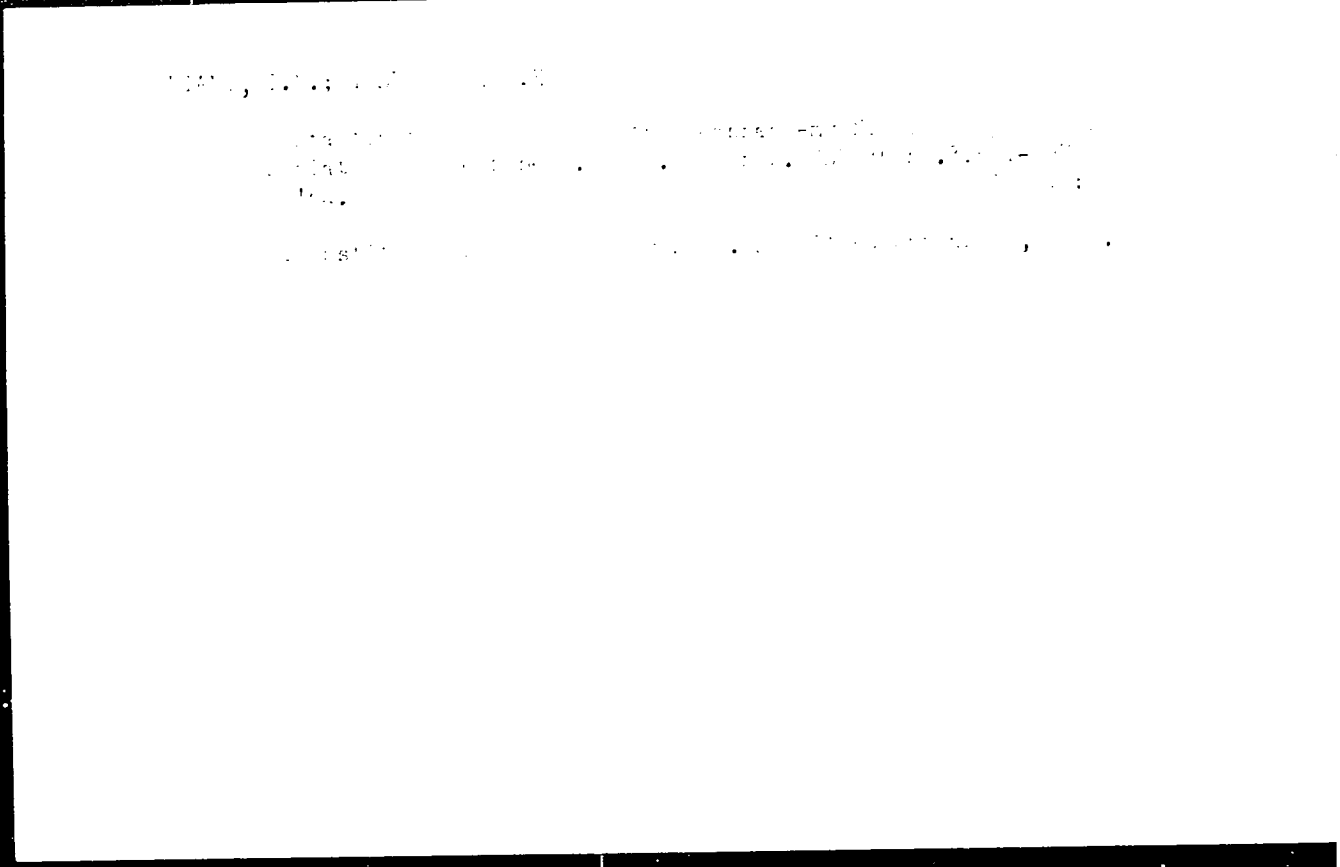
Postactivation changes in excitation of the neuromuscular apparatus. Ibid.:14-17

1. Institut fiziologii A. Gruzinskoy SSR, Tbilisi.

1. Introduction

Functional studies have shown that membrane-myofibril relationships are important in the regulation of cardiac muscle function. Several studies have shown that the sarcolemma is involved in the regulation of calcium release and re-uptake.

2. Institutional support: This work was supported by the National Institutes of Health, Grant No. HL-20100.



1986, 1987

1986, 1987
1986, 1987
1986, 1987
1986, 1987

ONIANI, Tengiz Nestorovich; BEKAYA, G.L., red.

[Problems of comparative physiology of the neuromuscular apparatus] Voprosy sravnitel'noi fiziologii nervno-myshechnogo apparata. Tbilisi, Me. sinieroba, 1974. 273 p. (MIRA 17:12)

I 22194-66

ACC NR: AT5024231

SOURCE CODE: UR/3167/65/014/000/0121/0130

AUTHOR: Oniani, T. N.

ORG: none

2
B+

TITLE: The functional formation of the myoneural junction in mammals in ontogenesis

SOURCE: AN GruzSSR. Institut fiziologii. Trudy, v. 14, 1965. Sovremennyye problemy deyatel'nosti i stroeniya tsentral'noy nervnoy sistemy (Present problems of the activity and structure of the central nervous system), 121-130

TOPIC TAGS: myoneural junction, CNS, ontogenesis, CNS ontogenesis, mammalian ontogenesis, muscle biopotential

ABSTRACT: Effects of motor nerve stimulation were studied in chloralose-narcotized cat embryos and kittens of various ages. Motor nerve stimulation was found to evoke muscle spike potentials and EPP as early as the 50th day of gestation. Traces of potentials evoked in the gastrocnemius and soleus muscles of 50-day embryos, and 7-hour, 10-hour, 1-day, 2-day, and 3-month-old kittens by single, paired, and rhythmic (various frequencies) stimuli are illustrated. On the basis of the data obtained it is concluded that the functional formation of the myoneural junction occurs during the prenatal period. Its further development is reflected in shrinkage of the chemoreceptive area of the muscle membrane and in increased secretory activity by the nerve endings.

[DP]

2.

SUB CODE: 06/ SUBM DATE: none/ OTH REF: 012/ SOV REF: 006/
Card 1/1 not

ONIANI, T.N.: UNGIADZE, A.A.

Nature of postactivation potentiation and depression of the
nerve-muscle transmission of excitation. Zhur. eval. biokhim.
i fiziol. 1 no. 6:516-522 N-D '65 (MIRA 1:81)

1. Laboratoriya ortogeneza nervnoy deyatel'nosti Inst. fiziologii AN Gruzinskoy SSR, Tbilisi.

ONIANI, T.N.

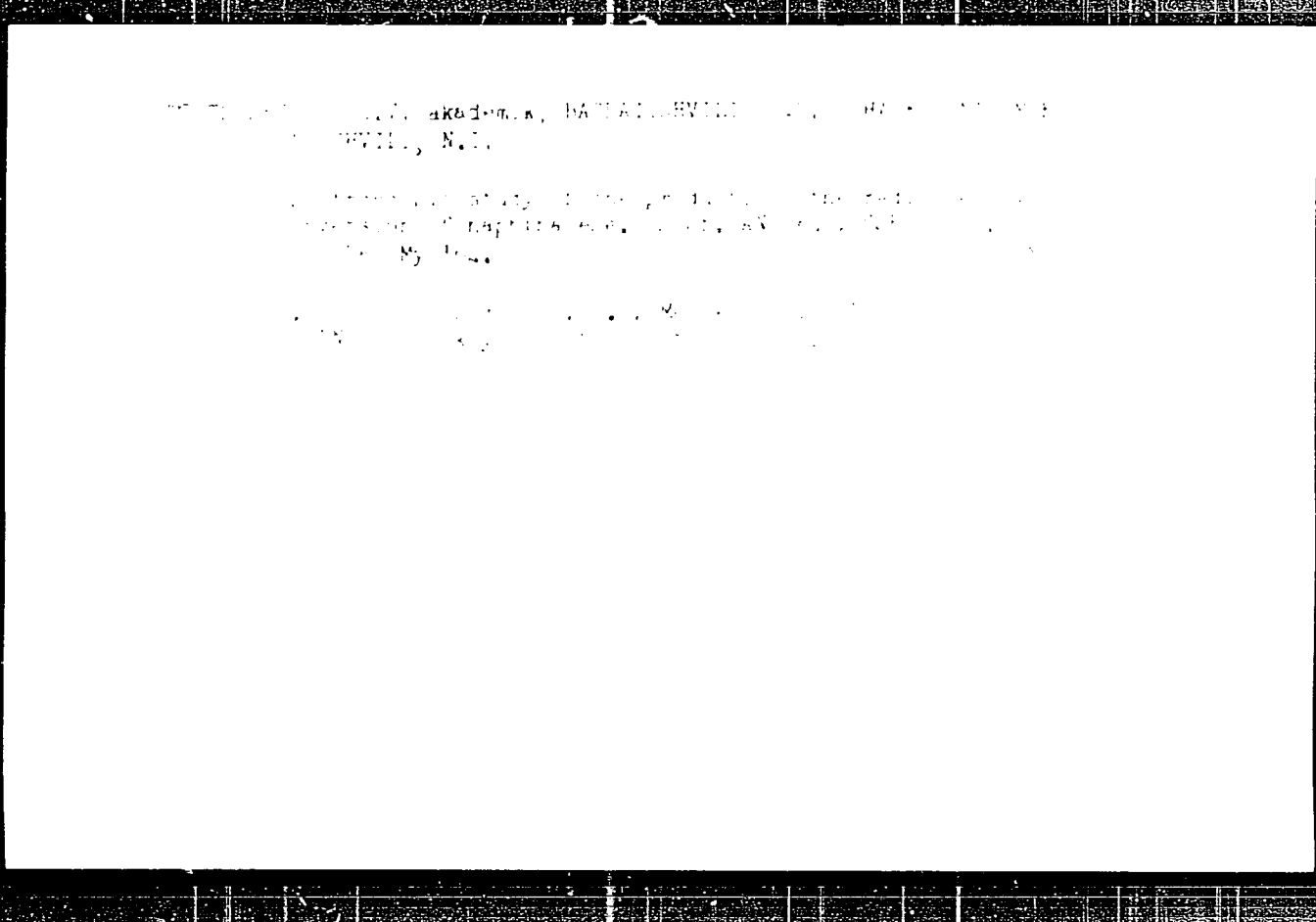
Ontogeny of postactivation changes in neuromuscular transmission
in mammals. Fiziol. zhur. 51 no.1:84-89 Ja '65. (MIRA 18:7)

1. Institut fiziologii AN Gruzinskoy SSR, Tbilisi.

NOGAYDELI, A.I.; SKHIRTADZE, N.N.; BAGRATSHVILI, G.D.; ONIASHVILI, N.I.

Preparation and spectra of 3,4,7,8,11,12-hexahydrotri-
phenylene. Zhur. ob. khim. 33 no.5:1517-1520 My '63.
(MIRA 16:6)

1. Institut khimii AN Gruzinskoy SSR.



ONIASHVILI, O.D.

Stability of a cylindrical shell subjected to axial compression [with summary in English]. See: AN Gruz. SSR 8 no.3:141-150 '47. (MLRA 9:7)

1. Akademiya nauk Gruzinskey SSR, Byure antiseysmicheskogo stroitel'stva, Tbilisi. Predstavlene deystvitel'nykh chlenov Akademii K.S. Zavriyevym.
(Elastic plates and shells)

ONIAHVILI, O.D.

Calculating critical forces for some instances of buckling of cylindrical shells. Soob. AN Gruz. SSR 8 no. 4: 227-234 '47.

(MIRA 9:7)

1. Akademiya nauk Gruzinskoy SSR, Byuro antiseysmicheskogo stroitel'stva, Tbilisi. Predstavleno deystvitel'nym chlenom Akademii K.S. Zavriyevym.

(Strains and stresses) (Elastic plates and shells)

ONIAHVILI, O.D.

Practical calculation of cylindrical envelope-type structures for
structures for stability [in Georgian with summary in Russian].
Trudy Inst.stroi.dela AN Gruz.SSR no.1:19-40 '48. (MLRA 9:8)
(Elastic plates and shells) (Structures, Theory of)

ONIASHVILI, O.D.

Testing the stability of a thin-walled cylindrical roof shell.
Soob.AN Gruz.SSR 9 no.1:45-52 '48. (MIRA 9:7)

1.Akademiya nauk Grizinskoy SSR, Institut stroitel'nogo dela,
Tbilisi. Predstavleno deystvitel'nym chlenom Akademii K.S.
Zavriyevym.

(Roofs, Shell)

ONIASHVILI, O. D.

Oniashvili, O. D. - "On the dynamic calculation of slanting envelopes", Soobshch. Akad. nauk Gruz. SSR, 1948, Nos. 9-10, p. 583-90.

SO: U-411, 17 July 53, (Letopis 'Zhurnal 'nykh Statey, No. 20, 1949).

ONIAŠVILI, O. D.

Mathematical Reviews
Vol. 14 No. 9
October, 1953
Mechanics.

Oniašvili, O. D. Application of a variational method to problems of vibrations and stability of a sloping shell. *Sootščeniya Akad. Nauk Gruz. SSR*, 10, 601-603 (1949). (Russian)

The solution of the problem of local stability and of vibrations of a sufficiently sloping shell (a sloping shell is an open shell of small curvatures) can be obtained from the integration of two simultaneous differential equations which determine the stress function and the normal displacements. These equations were given by V. Z. Vlasov [*Izvestiya Akad. Nauk SSSR, Otd. Tehn. Nauk* 1947, 27-52; these *Rev.* 10, 653]. In the case of harmonic vibrations the stress function which satisfies boundary conditions must also satisfy two variational equations. The Vlasov differential equations are difficult to solve in cases of variable stresses and curvatures. The above conditions do not affect the variational equations, whose solution can be reduced to a simple integration of preassigned functions. Such solution allows one to determine the natural frequency of vibrations of an initially stressed shell, a shell free from initial stresses, and also the critical load in the absence of body forces.

The author devotes this paper to the construction of the above-mentioned preassigned functions which would satisfy the boundary conditions. These functions are linear combinations of the fundamental functions used in the transverse vibrations of beams. The combinations depend on the boundary conditions and seven different cases of supports on the edges are investigated. None of the functions determined in this way is actually substituted in the variational equations; the author explains only the subsequent procedure. *T. Lutz* (Lexington, Ky.).

ONIAHVILI, O. D.

USSR/Physics - Shells

1950

"Dynamic Stability of Sloping Shells," O. D. Oniashvili, Inst of Constr, Tbilisi, Acad Sci Georgian SSR

"Soob Ak Nauk Gruz SSR" Vol XI, No 3, pp 169-175

Attempts to investigate the dynamic stability of shells in the light of V. Z. Vlasov's technical theory of shells as connected with parametric resonance (Hill's eqs, Mathieu's eq, variable parameters, etc.).

LC

192T92

PA 192T92

01111111, 1
Mathematical Reviews
Vol. 14 No. 10
Nov. 1953
Mechanics

Oniašvili, O. D. On the theory of earthquake-proof sloping shells. *Sobščeniya Akad. Nauk Gruz. SSR* 11, 409-416 (1950). (Russian)

(Note: A sloping shell is an open shell of small curvatures.) This work is based on V. Z. Vlašov's theory given in his book, *General theory of shells and its applications in technology* [Gostelizdat, Moscow-Leningrad, 1949; these *Rev.* 11, 627]. The author considers shells which are rectangular when projected on a plane and are supported radially on all four edges. He limits himself to the following shapes: a shell of two different curvatures, a spherical shell, and a cylindrical shell; and each type is dealt with separately. The influence of an earthquake is reduced to a horizontal load acting on the entire surface of a shell. The author uses the momentless theory, and also the theory which takes bending into account. It is convenient to express the stresses in a form of double trigonometric series, when the supports are radial. The main task in this boundary-value problem is to determine the coefficients of these series. Although the paper devotes most of its space to the construction of the series and the determination of the coefficients, the author refers to a previous (unavailable) publication [Trudy *Inst. Stroit. Dela Akad. Nauk Gruz. n.* SSR 3 (1950)] for a more detailed study of it. *T. Lever.*

ONIASHVILI, O.D.

Calculating sloping envelopes for earthquake resistance [in
Georgian with summary in Russian]. Trudy Inst. stroi. dela
AN Gruz. SSR 3:43-59 '51. (MLRA 9:10)

(Earthquakes and building) (Elastic plates and shells)

ONIANWILI, S. J.

Dissertation: Doctor of Philosophy, Department of History, University of
Dr. Cecil G. ...
Moscow, 1959, 110 pp.

...

ONIASHVILI, O.D.; DZHABUA, A.A.

Resistance of thin-walled three-dimensional structures to
the action of horizontal forces [in Georgian with summary in
Russian]. Trudy Inst. stroit. dela AN Gruz. SSR 4:45-67 '53.
(MLRA 9:10)

(Elastic plates and shells) (Roofs, Shell)

ONIASHVILI, O.D.; SHAISHVELASHVILI, V.N.; DZHABUA, A.A.; SIRANGULYAN, V.V.

Experimental testing of the rigidity of a cylindrical envelope
[in Georgian with summary in Russian]. Trudy Inst. stroi. dela
AN Gruz. SSR 4:69-71 '53. (MLRA 9:10)

(Floors, Concrete) (Elastic plates and shells)

124-57-2-217r

Translation from: Referativnyy zhurnal Mekhanika 1957, No. 2, p. 101 (USSR)

AUTHOR: Onyashvili, O. D.

TITLE: Approximate Solution of Some Problems of the Nonlinear Theory of Shells. (Priblizhennoye resheniye nekotorykh zadach nelineynoy teorii obolochek)

PERIODICAL: Trudy Inst. stroit. dela AN GruzSSR 1955, Vol. 5, pp. 11-20

ABSTRACT: The flexure, vibration, and stability of elastic shallow shells having a rectangular planform and freely supported at the ends is examined. It is assumed the principal curvatures of the median surface of the shell are constant quantities prior to deformation. The problem is reduced to the well-known nonlinear equations relative to the stress $\sigma_{\alpha\beta}$ and the flexure function w . The solution is sought by means of integration of these equations according to Bubnov's method, where

$$f = \sum_{mn} A_{mn} f_{mn}, \quad w = \sum_{mn} B_{mn} w_{mn}, \quad Z = \sum_{mn} C_{mn} Z_{mn} \dots$$

Card 1, 2 $f_{mn} = w_{mn} = Z_{mn} = \sin \frac{m\pi x}{a} \sin \frac{n\pi y}{b}$

124-57-1-1176

Approximate Solution of Some Problems of the Non-linear Theory

Here Z is the normal surface load, a is the length, and b the width of the panel. Substituting (2) in the equation of equilibrium, the author obtained the erroneous equations (3) which yield two relationships connecting the corresponding quantities A_{mn} and B_{mn} for the selected quantities m and n . In reality Eq. (3) is valid only in the event that the series in (2) comprise but one term each. Later on the author does limit himself to that first approximation. He set for himself the problem of determining the effect of nonlinear factors (the so-called secondary effect) upon the amplitude of the flexure, the frequency of the free vibrations, and the critical loading, and then proceeds to establish such small degrees of curvature (shallow camber) that even the linear theory would be accurate to within 5 percent. We note that the solution of the nonlinear problem by means of the first approximation itself may yield an error in excess of 5 percent. Computations are shown for several reinforced-concrete roofings of spherical and cylindrical shape, also some having a double curvature. It is shown that the linear theory underestimates the magnitude of the flexure and overrates the magnitude of the critical external pressure and the frequency of the free vibrations.

In Russian in "Vysokoye Stroyeniye" (Mathematics)

Kh. M. Muskhelishvili

Card 2 of 2

SO7 174 77 80 00

Translation from: Referativnyy zhurnal - Mekhanika, 1957, No. 1, p. 5-11, USSR

AUTHORS: Omiashvili, O. D., Shakhramanov, G. S.

TITLE: The Evaluation of the Boundary Effect in the Static Calculation of Spherical Shells. (Otsenka granichnogo effekta pri staticheskom raschete sfericheskikh obolochek)

PERIODICAL: Tr. In-ta stroit. dela AN GruzSSR, 1955, Vol. 5, pp. 27-39.

ABSTRACT: The authors submit an approximate evaluation of the state of stress in a shallow spherical shell that is rectangular in plan view with relation to the character of the boundary conditions. By means of determining the shallow shell equation of the engineering moment method, with the help of the variational method it is proved that the influence of the boundary effect increases with an increase in the slowness of the shell and attains a maximum in the limit case of a thin flat plate.

V. G. Petrov

Card 1 of 1

ONIASHVILI, OMAR LAZAROVICH

N/5
013.1
.05

Nekotoryye Dinamicheskiye Zadachi Teorii Obolochek (Various Problems On The Theory Of The Dynamics Of Thin Shells) Moskva, IZD-VO Akademii Nauk SSSR, 1957.

193, (1) p. Illus., Diagrams, Graphs, Tables.

At Head Of Title: Akademiya Nauk Gruzinskoy SSSR. Institut Stroitel'nykh Del.

"Literatura": p. 192-(194)

~~ONIASHVILI, Ghar Davydevich~~; ZAVRIYEV, K.S., otvetstvennyy redaktor; YEGOROV,
V.I., redaktor izdatel'stva; ASTAP'YEVA, G.A., tekhnicheskiiy redaktor.

[Some dynamic problems in the shell theory] Nekotorye dinamicheskie
zadachi teorii obelochek. Moskva, Izd-vo Akad.nauk SSSR, 1957. 193 p.
(MLRA 10:4)

(Elastic plates and shells)

ONISHVILI, O.D.

Distr: 4F1/4E2c

Book 804. Onishvili, O. D. Certain dynamic problems in the theory of shells (in Russian). Moscow, Academy of Science, 1957, 195 pp. 9 rubles.

To the best of this reviewer's knowledge this book represents the first book on shell theory to be devoted almost exclusively to the field of shallow shells. In the first chapter, author presents the well-known differential equations governing the behavior of thin elastic shells originally presented by Vlasov in 1944. In the second chapter he presents the application of these equations to the free vibrations of a cylindrical shell having simply supported ends. This is followed by a detailed treatment of the free vibrations of an arbitrary shallow shell, provided only that the Gaussian curvature is everywhere positive. Next the natural frequencies of a thin shallow spherical segment are determined.

3
3

The next chapter introduces variational methods, and several problems involving shallow shells having specified principal curvatures at all points together with boundaries having a rectangular projection upon the shell base plane are considered. Both the internal forces as well as natural frequencies are determined. A number of conditions of edge fixity are considered. Problems involving roof shells in the form of continuous shallow cylindrical panels subject to uniform load are treated.

The fourth chapter is devoted to forced vibrations of shallow shells. Cylindrical panels subject to pulsating axial forces as well as spherical shells subject to pulsating concentrated forces are treated in detail.

1/2

ONJASHVILI, O.D.

The fifth chapter investigates the effects of the inclusion of nonlinear terms in the governing differential equations, and the deformations of a cylindrical panel subject to uniform normal load are determined. It is shown that, for sufficiently large deflections, the linear theory may be as much as 16% in error.

The sixth chapter treats the deformations present in shallow shells having rectangular base projections and subject to combined normal load and edge loadings in the plane of the shell middle surface. Application of these results to mofs composed of continuous prismatic segments such that the cross section appears as a series of broken-line segments is discussed in detail.

The book concludes with a seventh chapter devoted to experimental verification of these results. Strain measurements indicated by electric strain-gage techniques as well as experimentally determined natural frequencies are shown to be in excellent agreement with the predictions of theory.

Much of the work in this book has been presented in the form of numerous papers by Prof. Onjashvili during the past six or seven years. In the book he has skillfully woven together his own contributions as well as the work of many other investigators to form an excellent treatise on shallow-shell theory. The bibliography lists 71 papers in several Western languages as well as Russian.

W. A. Nash, USA

3
2

2/2
ann

Vest. Kn. and ... Vol. 27, No. 3, 1957

30-8-17/37

New Books

and Investigation of Combustion Engines. Moscow 1957, 210 pp. and 2 appendices, 4000 copies, price 11 Roubles 90 Kop.

Oniashvili, O.D.: Some Dynamical Problems of the Theory of Thin Shells. Institute for Constructions of the Georgian AN, Moscow 1957, 196 pp., 3500 copies, price 9 Roubles 35 Kop.- Works on the investigation and research of the seismic resistivity, the resistivity against shocks and percussion of thin envelopes used especially in devices in industrial plants.

Bednyak, I. Ya. Japanese Aggression in China and in the Attitude adopted by America in 1937-1939. Institute for Orientalology, Moscow 1957, 176 pp. 4000 copies, price 5 Roubles 50 Kop.- An investigation of the position of the USA during the Japanese aggression 1937-1939. The attitude adopted by the USA towards China and the USSR.

Kurdoyev, K.K., Kurdish Grammar (Kurmandzhi), Phonetics, Morphology. Published by the Institute for Orientalology, 1957, 314 pp., price 13 Roubles 5 Kop., 1700 copies.

Mkhitaryan, S.A., The Struggle of the Vietnam people for Freedom (1945-1955), 1957, 19 pp., 550 copies, price 6 Roubles.

Card 6/8

ONIASHVILI, O.D., SHAKHRAMANOV, G.S.

Vibration of plates. Trudy Inst. stroi. dela AN Gruz. SSR 6:21-2.
'57. (MIRA 1:12)

(Elastic plates and shells--Vibration)

SOV/124-58-7-7946

Translation from Referativnyy zhurnal, Mekhanika, 1958, Nr 7, p. 44-47 USSR

AUTHORS Oniashvili, O. D., Shakramanov, G. S.

TITLE On the Vibrations of Plates (K voprosu o kolebaniyakh platinok)

PERIODICAL Tr. In-ta stroit. dela, AN GruzSSR, 1957, Vol 6, pp 31-34

ABSTRACT: The Bubnov-Galerkin method is used to determine the lowest natural frequency of a rectangular plate some of whose edges are clamped, the others being supported along their contours.
V.V. Bolotin

... Meth. ... --Vibrat. ...

Card 1/1

ONIASHVILI, O.D.; SHAYSHMELASHVILI, V.N.

Precast reinforced concrete cylindrical roofs for industrial buildings designed by the Institute of Construction of the Academy of Sciences of the Georgian S.S.R. Trudy nauch. korr. Inst. stroi. dela AN Gruz. SSR. no.2:7-26 '58. (MIRA 12:7)
(Roofs, Shell)

ONLASHVILI, O.D.

A special problem in using Galerkin's method of variations in
designing plates and shells. Trudy Inst.stroi.dela AN Gruz.SSR.
2:27-38 '59. (MIRA 13:5)
(Elastic plates and shells)

28 (0)

CHICOM/33-1-1-7/

AUTHOR: Cniashvili, G. D., Corresponding Academician, Academy of Sciences, Georgian Soviet Socialist Republic

TITLE: Calculations of Fabricated Shells and Other Thin-Walled Structures

PERIODICAL: Li Hsueh Hsueh Pao, 1960, Vol 3, No 1, pp 111-117

ABSTRACT: This is a translation of a Russian-language article.
Translator: Chou, Lai-seng (周来盛), assisted by
Chian, Pai-min (解伯民) and Piao, Li-shou (潘立宙).

Card 1/1

ONIASHVILI, O.D. (Tbilisi)

Resistance of reinforced concrete shell roofs. Strai. mek. i
rasch. soor. 1 no.4:29-34 '59. (MIRA 12:10)
(Roofs, Shell)

KLYACHKO, A.L., inzh.; EDINOV, N.I., inzh.; GLOKHOVSKIY, E.A.,
kand. tekhn. nauk, inzh., red.; GVAZDEV, A.A., doktor
tekhn. nauk, prof., red.; GORCHENSHTEYN, B.V., kand.
tekhn. nauk, red.; KOSTYUKOVSKIY, M.G., kand. tekhn.
nauk, red.; KRYLOV, N.A. doktor tekhn. nauk, red.;
KUREK, N.M., kand. tekhn. nauk, red.; LEVINSHIY, L.G.,
inzh., red.; LOBANCV, N.D., inzh., red.; MEROZOV, A.I.,
inzh., red.; ONIASHVILI, O.D., doktor tekhn. nauk, prof.,
red.; SAKHARASHIY, K.V., doktor tekhn. nauk, prof., red.;
FILIP, A.I., doktor tekhn. nauk, prof., red.; YEFIMOV,
A.D., inzh., nauchn. red.

[Three-dimensional structural elements in the U.S.S.R.;
materials of the All-Union Conference on Precast
Reinforced Concrete Three-Dimensional Elements held in
November 13-17, 1962 in Leningrad. Prostranstvennye kon-
struktsii v SSSR; po materialam pervogo Vsesoiuznogo so-
veshchaniya po sbernym zhelezobetonnykh prostranstvennykh
konstruktsiyam, sostoiavshegosia 13-17 noiabria 1962 g.
v Leningrade. Leningrad, Stroizdat, 1964. 461 p.

(MIRA 17:11)

1. Nauchno-tekhnicheskoye obshchestvo stroitel'noy indu-
strii SSSR. Leningradskoye otdeleniye.

L 30737-06 SWP(m)/Bm (j) T MW/IN

ACC NR: AP6022115

SOURCE CODE: RU/0018/65/000/010/0587/0590

AUTHOR: Sosea, Ion; Onica, Mihai

ORG: none

TITLE: Fireproofing of inflammable materials in naval construction

SOURCE: Constructia de masini, no. 10, 1965, 587-590

TOPIC TAGS: naval equipment, fire resistant material, fire protection, marine engineering

ABSTRACT: A report on the fireproofing methods and equipment used at the Turnu Severin Mechanical Works to fireproof inflammable materials used in ship construction. Orig. art. has: 3 figures and 1 table. Based on authors' Eng abst. [JPRS]

SUB CODE: 13, 11 / SUBM DATE: none

Card 1/1 IV

UDC: 629.12:667.637.4:699.81

0915 0028

ONICEANU, V.

Some aspects of the activities of the Institute of Oil Field Projecting.
p. 342.

PETROL SI GAZE. (Asociatia Stiintificia a Inginerilor si Technicienilor
din Romania si Ministerul Industriei Petrolului si Chimiei) Bucuressti
Rumania. Vol. 10, no. 2, 1969

Monthly list of East European Accessions (EEAI) LC Vol. 6, no. 2
Feb. 1960

Uncl.

CNICEANU, V., Eng.; 602 N 154, 1974

Utilization of gas deposits to meet the peak requirements of
requirements in Rumania. Internal at 1429 15 11 1974
602 N 154.

NICULESCU, Ion T.; GAHGI-PARSCHIV, A.; ONICESCU, Doina; RAILEANU, Iona;
GIUGARIU, D.; DEDIU, St.; OPRESCU-LISSIVIEVICI, Elena; TRIFU, P.

Contribution to the study of nerve endings in the pancreas. Rumanian
M. Rev. 1 no.2:5-10 Apr-June 57.
(PANCREAS, innervation
anat. of nerve endings)

HAGI-PARASHIV, A., Assit. Prof.; ENACHESCU, A.; ONIGESCU, Doina; SMOLENSCHI-POTIN, Ludmila; BOCIRNEA, G.; LISSIEVICI-OPRESCU, Elena; IERDIU, St.; RAILEANU, Ioana; RADU, Sorina

Contributions to the study of terminal nerve structures in the peritoneum.
Rumanian M. Rev. 2 no.2:9-10 Apr-June 58.
(PERITONEUM, innerv.
terminal nerve structures)

NICULESCU, St.; ONICESCU, D.; GAVAT, V.; SIMIONESCU, V.

Contributions to the study of regeneration in the peripheral nerves.
Changes in the nervous structures in the vicinity of certain animal
parasites localized in the muscles. Rumanian M. Rev. no.3:3-7 J1-S
'60.

(MUSCLES pathol) (TRICHINOSIS pathol) (PERIPHERAL NERVES pathology)

NICOLESCO, St.; ONICESCO, Doina; GAVAT, Victoria; SIMIONESCO, Vasilia

Apropos of the significance of some neurological lesions caused by animal parasites localised in the muscle. Acta Med. Acad. Sci. Hung. 11 no.2:257-266 '62.

1. Laboratoire d'Histologie de l'Institut de Médecine et de Pharmacie de Bucarest.

(TRICHINOSIS pathol) (NERVOUS SYSTEM pathol)

ONICESCU, O.

Onicescu, Octav, et Mihoc, Gh, Les chaînes de variables aléatoires. Problèmes asymptotiques. Acad. Roum. Études Recherches 14, 167 pp. (1943).

The authors give a treatment of the asymptotic theory of Markov chains, with some attention to the more general chains "à liaisons complètes," using the methods (usually involving characteristic functions) developed by them in a series of earlier papers. J. L. Doob (Urbana, Ill.).

Source: Mathematical Reviews,

Vol 10 No 5

5/

ONICESCU, OCTAV

Onicescu, Octav, et Mihoc, Gh. Un cas d'exception dans la theorie des chaines de Markoff. Acad. Roum. Bull. Sect. Sci. 24, 401-408 (1943).

Let x_1, x_2, \dots be the random variables of a Markov chain with stationary transition probabilities. In earlier papers [Bull. Math. Soc. Roumaine Sci. 41, 99-116 (1939); Mathematica, Cluj 16, 13-43 (1940); these Rev. 1, 342] on the distribution of $\sum_{i=1}^n x_i$ for large n , studied by means of characteristic functions, the authors were forced to appeal to other methods to handle a certain degenerate case. They now show, deferring the details to a later paper, how their method can be used in all cases. [For a complete treatment of this problem by a different method see W. Dooblin, Bull. Math. Soc. Roumaine Sci. 39, no. 2, 3-61 (1937).] J. L. Doob (Urbana, Ill.).

MS

Smu
1943

Onicescu, O.

Onicescu, O. Sur le théorème fondamental de l'algèbre.
Mathematica, Timisoara 22, 208-214 (1946).

Proof of the fundamental theorem in the form "a polynomial with real coefficients and of even degree has a real quadratic factor," avoiding the use of complex numbers. The work starts with a lemma (which may be generalized considerably) of which the proof is simple; necessary and sufficient conditions for $a_0x^{2m+2} + \dots + a_{2m+2}$ to have a quadratic factor $x^2 - c$ are identical with necessary and sufficient conditions for $a_0x^{2m+1} + a_1x^{2m} + \dots + a_{2m}x + a_{2m+1}$ and $a_1x^{2m} + a_2x^{2m-1} + \dots + a_{2m-1}x + a_{2m}$ to have a common factor $x - b$. By applying this lemma and using purely algebraic reasoning, it is proved that a polynomial of degree $2n$ with real coefficients has a real quadratic factor. From this point on, methods of analysis are applied (mapping of one real plane on to another real plane by an algebraic function and topological and continuity considerations).

A. J. Kempner (Boulder, Colo.).

Source: Mathematical Reviews,

Vol 8, No. 3

Handwritten scribble

ONICESCU, O.

1946

Onicescu, O. Les séries de structures. Acad. Roum. Bull. Sect. Sci. 26, 303-310 (1946).

Let x_1, x_2, \dots be mutually independent nonnegative random variables. The author apparently wishes to prove, in the language of "binary structures," that $\sum x_n$ converges in distribution if and only if the infinite product $\prod \Pr \{x_n = 0\}$ is convergent. The general theorem [which is false] is derived from the special [true] theorem for the case when x_n only takes on the values 0 and 1. J. L. Doob.

Source: Mathematical Reviews,

Vol 7 No.

[Handwritten mark]

Onigescu, O. Integrals singuliere si reprezentarea
 functiilor liniare. Rev. Univ. "C. I. Parhon"
 Iasi, Ser. Sti. No. 1 (1953), no. 2,
 pp. 15-16. (Romanian. Russian and French summaries)

The author proves that if f is continuous on $[a, b]$ and
 if F is a monotone function defined on the whole line with
 total increase one, then

$$\lim_{\alpha \rightarrow 0} \int_a^b f(x) dF\left(\frac{x-\xi}{\alpha}\right) = \begin{cases} 0 & \text{if } \xi < a \text{ or } \xi > b, \\ f(\xi) & \text{if } a < \xi < b. \end{cases}$$

The result is extended to functions of bounded variation
 and to n dimensions. Combined with Helly's theorem on
 limits of functions of bounded variation this leads to a
 proof of the F. Riesz theorem on representation of a
 linear functional on the space of continuous functions on
 $[a, b]$.

M. M. Day (Urbana, Ill).

ONIGESCU, O.: Singular Integrals and Representation of Linear Functions

Onicescu, O.

M. A. S.
1953
Onicescu, O. Une mécanique nouvelle des systèmes matériels. I. Rev. Univ. "C. I. Parhon" P'ltchh. Bucuresti. Ser. Sti. Nat. 2 (1953), no. 3, 23-33 (Romanian. Russian and French summaries)
La mécanique présentée dans ce travail prend comme point de départ les systèmes analytiques définis à l'aide de paramètres canoniques q^i, p_i ($i=1, \dots, n$) et d'une fonction d'état $J(q, p, t)$. (From the French summary.)
F. A. E. Pirani (London).

ONICESCU, O.: A New Mechanic of the Material Systems

Onicescu O.
(Onicescu O., Chalmes continues A liaisons completes;
Rev. Univ. "C. I. Parhon" Politehn. Bucuresti. Ser.
Sti. Mat. 3 (1954), no. 4-8, 73-85. (Romanian. Rus-
sian and French summaries)
The author studies chains of complete connection
(called chains of type O-M by Doeblin and Portet, Bull.
Soc. Math. France 65 (1937), 132-148) in the continuous-
parameter case, under the assumption of a finite state
space. A differential equation satisfied by the transition
probabilities is found, generalizing the one relevant to the
Markov case, and the ergodic properties of the transition
probabilities are investigated.
J. L. Doob.

Smw

Onicescu, G. L'évolution de la répartition des grandeurs additives de la mécanique statistique. Rev. Univ. "I. Parhon" Politehn. Bucureşti. Ser. Şti. Nat. 4 (1955), no. 6-7, 31-34. (Romanian. Russian and French summaries)

The author studies the distribution of an additive quantity for a mechanical system with a large number of interacting components. The interaction is introduced by means of a function specifying the number of interactions in time t .
J. L. Doob (Urbana, Ill.)

Statistics

16

ONICESCU, O.

Onicescu, O.; Ionescu Tulcea, C. T. Sur la régularisation des mesures et le théorème de Riesz. Rev. Univ. "C. I. Parhon" Politehn. București. Ser. Ști. Nat. 4 (1955), no. 6-7, 35-38. (Romanian. Russian and French summaries)

2 4

Given an interval I in Euclidean n -space, the author constructs on the product $I \times I$ a sequence of density functions whose total weight is concentrated nearer the diagonal with increasing n . With these functions he gives short proofs that (1) each additive bounded variation interval function on I is the "weak" limit of such functions defined from continuous density functions, and (2) each linear functional on $C(I)$ is representable as an integral with respect to such a function (Riesz theorem).
M. M. Day (Urbana, Ill.)

Set¹⁶
Function¹⁶

up' 8.11.11

ONIC ESCUO.

Onicescu, O. L'application de quelques théorèmes de calcul de probabilités à la statistique stellaire. Rev. Univ. "C. I. Parhon" Politehn. Bucuresti, Ser. Sti. Nat. 4 (1955), no. 8, 35-38. (Romanian, Russian and French summaries)

Let X stand for a directly unobservable characteristic of a star (e.g., absolute magnitude) and Z for the corresponding observable apparent characteristic of the same star (e.g., apparent magnitude) so that X is a known function $F(Z, R)$ of Z and of the star's distance R . It is assumed that X is a random variable with a probability density $\Psi(x)$, independent of R . Also it is assumed that, for a specified category of stars for which the observations of Z are possible, R is a random variable with a probability density $r^2 D(r)$. Then the probability density of Z , say $\psi(z)$, is given by the familiar equation

(1)
$$\psi(z) = \int_0^\infty r^2 D(r) \Psi(F(z, r)) (dF/dz) dr.$$

The author notices that for three particular interpretations of X and Z , namely for absolute and apparent luminosity, for absolute and apparent magnitude and for transversal velocity and proper motion, there exist transformations

Probability
Statistics

Celestial
Mechanics

1/2

Ornicescu, O.

of variables which reduce the equation (1) to a standard form of a convolution $f_1(u) = \int_{-\infty}^{\infty} f_2(v) f_3(u-v) dv$, where f_1 , f_2 and f_3 are probability densities. The application of Cramér's theorem implies then that if f_1 is a Gaussian density then f_2 and f_3 are also Gaussian densities.

J. Neyman (Berkeley, Calif.)

2/2

form

SE

ONICESCU, O.

4
* Onicescu, O.; Mihoc, G.; and Ionescu Tulcea, C. T.
Calculul probabilităților și aplicații. [The calculus of
probability, and its applications.] Editura Academiei
Republicii Populare Române, 1955. 787 pp. Lei
26,30. I-FW

There are three parts. The first part is classical. The
second, entitled "Stochastic processes", deals with
Markov chains, ergodic problems, distributions, limit
theorems, time series, aleatory mechanics, and mixing pro-
cesses. The third part, entitled "Applications", includes
statistical mechanics, mathematical statistics, demo-
graphy and actuarial theory (13 pages are devoted to
insurance other than life insurance), and finally there are
6 pages on stellar statistics. There is a bibliography of 221
titles. 1/1

ONICESCU O.

On the Distribution of the Sums of Random Variables of a Markoff Process

Onicescu, O. La répartition limite des sommes de variables aléatoires d'un processus Markov fini, homogène et continu. An. Univ. "C. I. Parhon" București. Ser. Sti. Nat. 5 (1956), no. 12, 9-12. (Romanian. French and Russian summaries) ² 1-F/W

In this paper the author gives various results concerning the homogeneous Markoff chains with a finite number of states and continuous parameter. In particular, he shows that the method introduced by himself and by G. Mihoc [Mathematica Cluj 16 (1940), 13-43; MR 1, 342] for the study of the asymptotic properties of the partial sums of a sequence of random variables constituting a Markoff chain with a finite number of states may be adapted to the continuous case. Estimations similar to those obtained in the discrete case are also given.

C. T. Ionescu Tulcea (New Haven, Conn.)

JR
1/1

UNICE-CO, C.

Onicescu, O. Variationsprinzipien, welche die inneren
Verbindungen eines kontinuierlichen Mediums definie-
ren. Rev. Méc. Appl. 1 (1956), no. 2, 7-13.
The author states variational equations, for: (1) the
motion of a continuous medium; (2) the effects of com-
pressibility, pressure, and viscosity. His idea is to re-
present all of these phenomena by variational equations of
a special type. Due to the author's use of a very compressed
notation, the reviewer is unable to follow the argument.
N. Coburn (Ann Arbor, Mich.)

2

CC
1/1

S. M. M.

Variation Principles, That Define the Internal Conne-
tion of a Continuous Medium.

C. N. LESCU, C.

Onicescu, O. Quelques remarques sur la solution du système de Cauchy pour l'intérieur d'une courbe de Jordan, comme un problème de Cauchy. An. Univ. "C. I. Parhon" București. Ser. Ști. Nat. 5 (1956), no. 10, 9-13. (Romanian. Russian and French summaries)

The Cauchy-Riemann equations for u, v are replaced by an equivalent vector differential equation, involving a matrix differential operator. A solution with prescribed values on a circle, or on a general convex closed curve, is obtained by iteration. W. Kaplan (Ann Arbor, Mich.)

MJI
V/

Sm