

NOSSA, L., dr.; MIHAILESCU, I., dr.; MINEA, V., chimista

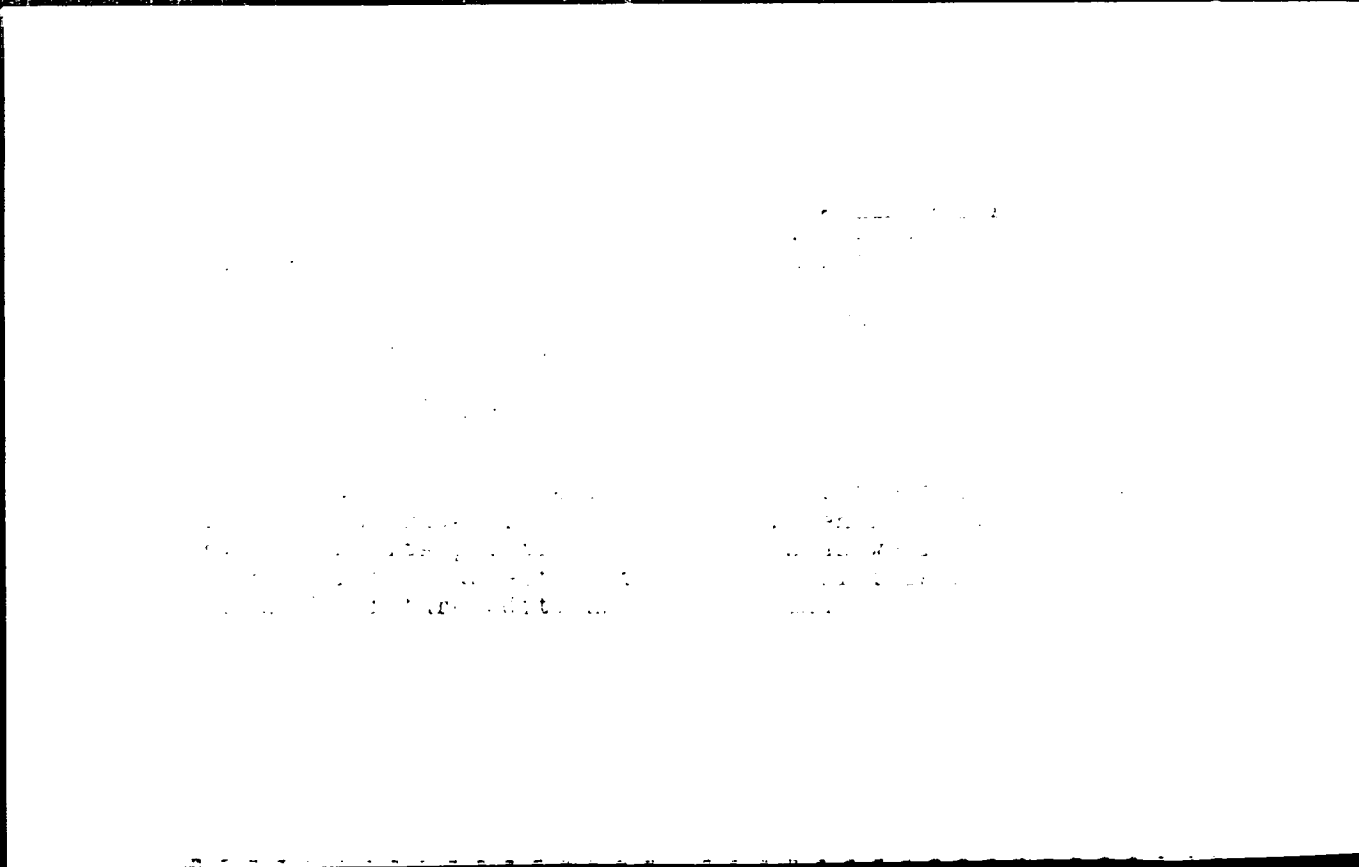
Idiopathic hyperlipemia, diabetes mellitus, chronic exocrine pancreatic diseases and obesity. Med. int., Bucur. 12 no.1:119-124 Ja '60.

1. Lucrare efectuata la Spitalul unificat Dej.
(DIABETES MELLITUS, complications)
(LIPIDS, blood)
(PANCREAS, diseases)
(OBESITY, complications)

NOSSA, L., dr.; SIMONETTI, O., dr.; BANICLANJ, M., dr.; MIHAILESCU, I., dr.

Chronic dermatomyositis with visceral onset. Med. intern., Bucur
12 no.11:1713-1717 N '60.

1. Lucrare efectuata in Spitalul unificat, Dej.
(DERMATOMYOSITIS case reports) (GASTROENTEROLOGY)
(BILE DUCTS diseases) (KIDNEY DISEASES etiology)



MIRALESCU, Ion, prof. emerit. 1941

Experiences in...
no. 6: 59-63 N-1 161.

RUMANIA

DOGARU, D., Dr, Lt-Col, DEDIU, St., Dr, MIHAILESCU, Fl., Dr, and TUDOR, V., Dr, Col [affiliation not given]

"Drug Hepatitis. In Connection with an Acute Intoxication with 'Suplin' ('Anapetol')."

Bucharest, Revista Sanitara Militara, Vol 62, No 2, Mar-Apr 66, pp 225-235.

Abstract: After reviewing possible harmful effects of drugs on the liver, the authors present and discuss a case history of acute hepatitis caused by the use of Suplin, a phenometrazine drug widely used to treat obesity. Difficulties of establishing a correct diagnosis, especially of differentiating between various forms of epidemic hepatitis, are examined, and the use of morphologic tests in addition to clinical examination is strongly urged.

Includes a bibliography with 31 entries, of which 10 Rumanian, 2 Russian, 4 German, 2 French and 11 English-language. -- Manuscript submitted 4 August 1965.

1/1

DUCA, M.; TEODOROVICI, Gr.; OANA, C.; DUCA, Eugenia; VITA, Alla; BIRSAN, Șt.;
ROSCA, Lucia; VANCEA, Georgeta; DIMITRIU, G.; MIHAILESCU, G.

Epidemic of adenovirus infection with ocular manifestations. Stud.
cercet. inframicrobiol. 13 no.3:359-366 '62.

(ADENOVIRUS INFECTIONS) (EYE MANIFESTATIONS)
(KERATOCONJUNCTIVITIS)

RUMANIA / Cultivated Plants. Commercial. Oil Bearing. M-5
Sugar Bearing

Abs Jour: Ref Zhur-Biol., No 6, 1958, 25150

Author : Olteanu, Fl., ~~Mihallescu, G.~~, Ioniciciu, C.
Inst : Agronomic S.R.I.; Inst. of Biochemistry
Title : The Effect of Growth Stimulants on the Sunflower
and Corn Crop Increase

Orig Pub: Comun. Acad. RPR, 1957, 7, No 1, 107-112 (Rum.,
res. Russ., Fr.)

Abstract: Test made at the Agronomic Scientific Research In-
stitute in 1954-1955 together with the Institute
of Biochemistry show that seeds of sunflower and
corn which have been treated with hydroquinone,
KBr, I in Lugol's solution, $KMnO_4$, NH_4NO_3 and other
substances have a considerably higher yield. The
best results were obtained by treating sunflower

Card 1/2

RUMANIA

MIHAILESCU, Gh. F., Veterinarian, of the Dolhasca Veterinary District (Circumscriptia Veterinara Dolhasca), and MIHAILESCU, I. F., Veterinarian, of the Liteni Veterinary District (Circumscriptia Veterinara Liteni), Suceava Regiune.

"Studies on the Stimulation of the Growth of Cattle by Embryo Extracts."

Eucharest, Revista de Zootehnie si Medicina Veterinara, Vol 16, No 11, Nov 66, pp 19-24.

Abstract: The authors tested the use of embryo extracts to stimulate the growth of calves, also determining the optimal dosage and method of administration. Under the best conditions growth increases of 1,200 to 1,500 grams daily could be obtained.

Includes 4 tables and 12 Rumanian references.

L 29661-66 EWP(k)/EWP(h)/EWP(l)/EWP(v) BC
ACC NRI AP:020132 SOURCE CODE: RU/0011/05/000/005/0221/0228

AUTHOR: Weinrich, G. (Engineer; Candidate of technical sciences); Lavlan, I. D. (Engineer); Mihailescu, I. (Engineer); Constantinescu, M. (Engineer); Gavat, St. (Engineer) 4

ORG: none

TITLE: Unified transistorized regulating system for rapid dynamic processes--UNIDIN

SOURCE: Automatica si electronica, v. 9, no. 5, 1965, 221-228

TOPIC TAGS: automatic regulation, transistorized circuit

ABSTRACT: The authors summarize the design and operation of the UNIDIN transistorized automatic regulation system, built in Rumania since 1963-1964, and review the results of its use in various applications. They conclude that the principles underlying the design have proved to be the correct ones, and that its modular construction with standardized elements (printed circuit cards, etc.) offers many advantages from the point of view of construction, installation and operation. Orig. art. has: 5 figures and 1 table. [JPRS]

SUB CODE: 13, 09 / SUMM DATE: none / ORIG REF: 004

Card 1/1 MC

UDC: 621-523.8

NEGULESCU, M.; GHEDEKIM, V.; MIRALLESU, I.

Research on the purification of residual waters from the coal preparation in the Jiu Valley. Studii prot epur apeler 5:3-65 '64.

MIHAILESCU, M.; UNGUREANU, I.

Resistance to compression of concrete prepared with three kinds of cement. p. 545. Academia Republicii Populare Romine. Institutul de Mecanica Aplicata. STUDII SI CERCETARI DE MECANICA APLICATA. Bucuresti. Vol. 6, no. 3/4, July/Dec. 1955.

So. East European Accessions List Vol. 5, No. 9 September, 1956

AUBERT, H., prof.; ZOSIN, P.; STANCIU, L.; MUNTEANU, M.; MIHAILESCU, M.

Treatment of active paroxysmal extrasinusal rhythm disturbances
with Procainamide (Procestil). Romanian M. Rev. 3 no.4:10-11
O-D '59.

1. 1st Medical Clinic of the Medicopharmaceutical Institute,
Timisoara, Director: Prof. H. Aubert.
(ARRHYTHMIA, therap.)
(PROCAINE AMIDE, therapy)

RUMANIA/Pharmacology and Toxicology: Various Preparations. 1-7

Abs Jour : Rev. Roum. - Biol., No 21, 1956, 98573

Author : C. G. Ionescu, I., Stancu, G., Chailescu, M., Schorscher, G.,
Dragoescu, N.

Inst : Rumanian Academy, Baza Timisoara.

Title : Pharmacological Effects of an Extract of Gastric Mucosa.

Orig Pub : Studiile si cercetari stiintifice. Acad. RPR, Baza Timisoara,
1955, 1, No 1-4, 451-461.

Abstract : The effect of an alcohol extract of gastric mucosa (I),
(I), possessing hyperacidic action, was studied in the
internal organs (frog's heart, small intestine of rat, spec-
imen of Lower-Trendelenburg), on narcotized and non-narcot-
ized dogs. In comparison with acetylcholine, I produced
a more prolonged but weaker action; atropinized and
section of the spinal cord at the level of C6 did not affect

Card 1/2

RUMANIA/Chemical Technology. Chemical Products and Their
Application. Medicinals. Vitamins. Antibiotics.

E-17

Abstr Jour: Ref Zhur-Khim., No 13, 1957, 443-3.

Author : Polovragana I., Ci Canelen V., Mihailescu M.

Inst :

Title : Substitution of Ethyl Benzoate for Benzyl Alcohol
in Oil Solutions for Injection.

Orig Pub: Farmacia (Romania), 1957, 5, No. 2, 123-126.

Abstract: A study was made of the possibility of substituting ethyl benzoate, of domestic manufacture, for benzyl alcohol, in a number of oil solutions for injection. From the performed investigations it has been ascertained that in these solutions the benzyl alcohol can be successfully replaced by the ethyl ester of benzoic acid.

Card : 1/1

RUMANIA

GARDA, M., MD; MIHAILESCU, M., MD.

Emergency Hospital of Buzareoi (Hospital of Urgenta, Bucharest)
- (Personal)

Bucuresti, *Viea Medicala*, No 1, 1 June 66, pp 143-147

"Recent Findings in the Treatment of Acute Intoxication."

TEODOREANU, N.; MIHAILEȘCU, M.; DUICA, S.

Heredity of histological characteristics of thyroid gland in
Leghorn and Rhode Island hens and their crossbreds (F₁). Studii
cerc biol anim 14 no.4:461-472 '62.

1. Membru corespondent al Academiei R.P.R. si membru al Comite-
tului de redactie, "Studii si cercetari de biologie, Seria
biologie animala" (for Teodoreanu).

ROMANIA

MIRILACU, M.

Pharmacology Laboratory - Institute of Medicine in Timisoara
(Laboratorul de Farmacologie - Institutul de Medicina Timisoara)

Timisoara, Timisoara Medicina, No 1, Jan-Jun 68, pp. 1-6

"Treatment of ... with ..."

CONSTANTINESCU, Valentin; MIHAIESCU, Maria; IOSIPESCU, Adrian

Automation equipment with elements without contacts for a transfer
line. Probleme automatiz 4:55-62 '63.

MIHAILESCU, Maria

Difficulties in experimental study of psycholeptic drugs.
Fiziol. norm. pat. 6:499-505 '64

1. Catedra de farmacologie , Institutul medico-farmacologic
Timisoara.

MIHAILESCU, Matei; MUNTEANU, E.; LIPSCHUTZ, G.

The role of inguino-iliac adenectomies in the course and treatment of tuberculous osteoarthritis and synovitis of the lower limb.
Rumanian M. Rev. 3 no.4:25-27 O-D '59.

1. Surgical Hospital for Bone Tuberculosis, Bucharest.
(TUBERCULOSIS, OSTEOARTICULAR, surgery)
(SYNOVITIS, surgery)
(LUMPH NODES, surgery)

SOLOMON, I., ing.; MARINCU, M., ing.; APOSTOLEANU, Vasilica, ing.; CRISTEA, S.
NIETZ, K.; GEIB, A.; BARDUT, I.; REIMER, H., ing.; MIHAILESCU, M., ing.

Improving the finishing technological processes of woolen
fabrics, Pt.1. Ind text Rum 12 no.5:199-205 My*61

1. Institutul de cercetari textile (for Solomon). 2. Industria
Linii, Timisoara (for Marincu). 3. Dorobantul, Ploiesti (for
Apostoleanu, Cristea). 4. Postavaria Romina, Bucuresti (for
Nietz) 5. Fabrica de postav, Bihusi (for Geib). 6. Libertatea,
Sibiu (for Bardut). 7. Partizanul Rosu, Brasov (for Reimer,
Mihailescu).

~~Mihaila~~, *Mihaila*, *Mircea*

✓ Criterii Generale Pentru Calculul în-
voltorilor Subțiri. Mircea Mihaila
Bul. Stiin., Sect. Stiin. Tech. Chim., vol. 8
1964, pp. 1-10. Romanian. Deriv
the differential equation of equilibrium

VAN
G.M.

MIHAILESCU, MIRCEA

Teoria de Incovolere la Paraboloizii
Hiperbolici. Mircea Mihăilescu. Stud.
Cerc. Mec. Aplic. Apr.-June, 1958, pp.
421-442. In: Romanian. Application of
the bending theory to hyperbolic para-
boloids and derivation of formulas to
determine the state of stress, etc.

16
189

SMW
mjc

Mihailescu, M.

3249. Mihailescu, M., On the membrane theory of shells with double directrix and director plane, Acad. Repub. Pop. Romane Rev. Mecan. Appl. 3, 1, 137-174, 1956.

Membrane theory is considered of a shallow shell whose middle surface is generated by a straight line constrained to remain parallel to a given plane (directrix plane) as it moves along a pair of plane curves (directrices) which lie in parallel planes both perpendicular to the directrix plane. Solution is obtained for a loading which is symmetrical with respect to the axis of generatrix. Reviewer believes that the paper contains nothing not available in Truesdell [Trans. Amer. Math. Soc. 88, 96-162, 1953].

2

J. H. Bastrukov, USA

gfm orb

MIHAILSCU, M.

The theory of flexure applied to hyperbolic paraboloids.

F. 421(Academia Republicii Populare Romine. Institutul de Mecanica Aplicata. STUDII SI
CONFERINTARI DE MECANICA APLICATA. Vol. 7, no. 2, Apr./June 1958, Bucuresti, Romania)

Monthly Index of East European Accessions (FIAT) L. Vol. 7, no. 2,
February 1958

MIHAILESCU, M.

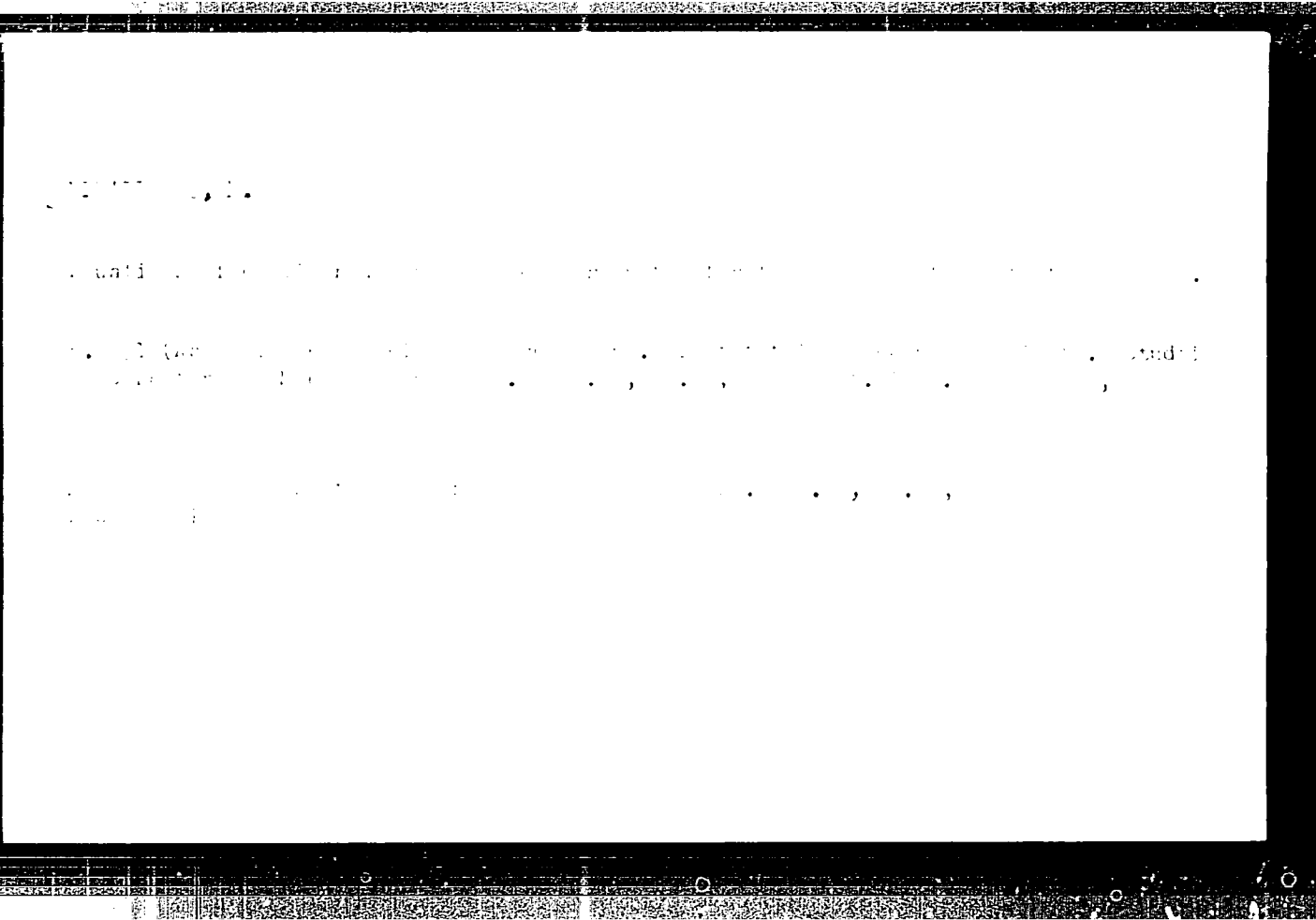
1247. Mihailescu, M., Bending theory for hyperbolic paraboloids (in Roumanian), *Studii si cercetari Mecan.*, 1956, vol. 7, no. 1.

The stress state due to the boundary action (the homogeneous problem) is discussed within the bending theory for the three types of boundaries met in practice: (1) paraboloid bounded by principal parabolas (the shape resembles a saddle); (2) paraboloid bounded by generatrices (the surface resembles a warped rectangle); (3) paraboloid limited at the intersection with a circular cylinder.

The paraboloids whose angle of the two families of generatrices is a right or acute one have been taken into consideration, approximating the metric on the surface equal to the metric in plane. Author reaches solutions which are similar to those known for circular cylindrical shells.

P. Augustin, Roumania

Handwritten initials: J.M. orb



SHIMIZU, M.; SHIMIZU, Y.

Application of the relaxation method to the computation of train schedules. p. 19

STUDII SI Cercetari Matematice. Vol. 10. Academia Republicii Populare Romine
Bucuresti, Rumania
Vol. 10, no.3, 1959

Monthly List of East European Accessions (EAS) C., Vol. 7, no. 1, Jan. 1967
Uncl.

1/008/02/013/006/004/000
A005/A126

AUTHOR: Minăilescu, Mircea

TITLE: The bending theory in cylindrical shells of variable curvature radius

PERIODICAL: Studii și cercetări de mecanică aplicată, v. 13, no. 6, 1968, 1,453 - 1,461

TEXT: This paper presents a method of determining within the bending theory the stresses in cylindrical shells of variable curvature. In case of a cylindrical shell whose directing arc is a continuous curve, the equilibrium surface element is expressed by two vectorial equations and a scalar equation. The scalar equations on the x, y directions can now be deduced from the vectorial equations. The equilibrium is expressed by five scalar equations with 5 unknowns. To bring the number of unknowns into correspondence with the number of equations, the axial stresses are considered to be the second derivatives of the stress function F, and the bending and twisting moments to be the secondary derivatives of the displacement function w. Thus one obtains two equations with two unknowns.

Card 1/2

The bending theory in cylindrical shells of ...

07/12/2001 14:10:00
R005/ALPb

F and w . Eliminating the function ϕ from these two relations, one obtains an equation with partial derivatives of the 5th order with variable coefficients, in which w is the unknown function. Replacing now the expression of w and the expression of the load, this equation is transformed by a Fourier series development into a differential equation of the 5th order with variable coefficients. Considering that the variation of the curvature radius is expressed by a non-morphic function, the differential equation can be solved by the Frobenius method, leading to a general solution. A particular integral which can be determined from case to case by the method of constant variation might be added to this general case. There are 3 figures.

SUBMITTED: August 20, 1961

Jan 1962

MIHAILESCU, Mircea

Bending theory of cylindrical shells of variable radius
of curvature. Rev mec appl 8 no.5:905-913 '63

ROMANIA

MIRAILLESCU, M.

Chair of Pharmacology, Institute of Medicine (Catedra de
farmacologie, IME), Timisoara

Timisoara, Timisoara Medicala, No. 3, July-September
1965, pp 213-217

"Anti-Virus Medicated Substances"

L 33706-66 SCTR DD

ACC NR: AF6025164

SOURCE CODE: RU/0012/65/061/004/0671/0674

AUTHOR: Lupu, I. (Doctor; Lieutenant colonel); Mihailescu, M. (Doctor; Major)

C.G.: none

TITLE: Effect of noise on sailors working on motor ships

SOURCE: Revista sanitara militara, v. 61, no. 4, 1965, 671-674

TOPIC TAGS: acoustic biologic effect, military power boat

AB: TRACT: The authors report on a study of 34 sailors working on high-speed military motor boats. Both immediate and long-range effects of the continuous noise on the hearing of the men was studied by means of audiograms; the effects were found to vary in terms of individual susceptibility and length of exposure. The importance of proper selection of the men and of regular checkups is emphasized. [5 PRS: 33,500]

SUB CODE: 06, 13/ SUBM DATE: 15Oct64/ ORIG REF: 002/

Card 1/1

PP

0476

0579

MIHAILESCU, M.P.

Method of approximating load deformation curves. . . .
Studii cerc mat 15 no. 1:45-54 '64.

ANTONESCU, Em.; BALS, St.; GEORGESCU, P.; GEORGESCU, V.; MANTEA,
Gh.; MIHAILESCU, M.; PANIN, N.; TOMESCU, C.

Sedimentologic data on the Cenomanian-Lanian deposits in
the Vintă de Jos Geoagiu region. Studii cerc geol 8
no. 2: 21-34 1963.

1. Comunicare prezentată de academician G. Murgescu.

MEHALLSON, N

Diagrams of the number of measurements necessary for the geophysical studies. Studia: here geol. geof. geogr. 9 no. 2: 533-541, 1964.

1. Enterprise of Prospecting and Laboratories, Geological Committee. Submitted April 23, 1964.

Washington, D.C.

Department of State, Office of the Secretary of State

Washington, D.C. 20520-1200

Telephone: (202) 646-1200

100

MIHAILIDE, D., dr.; MIHAILESCU, N., dr.; IOSIPESCU, I., dr.

Vertebral degenerative rheumatism in heavy industry. Med. Intern.
14 no.7:813-817 J1 '62.

(SPINAL DISEASES)
(INDUSTRIAL MEDICINE)

(ARTHRITIS, RHEUMATOID)
(OCCUPATIONAL DISEASES)

FLORIAN, Petru, prof. (Dej). MARUSTERU, St., (Baia Mare); HERLING, C., student; PIRSAN, L.C., student (Bucuresti); IONESCU-TIU, C.; COSTACHESCU, C.V., LAMBA, Stelian (Constanta); LIVIU, Petre (Pucioasa); STRATESCU, Ion, student; BRINZANESCU, V., elev (Constanta); KLIM, Bratu, student (Bucuresti); TEMPEANU, C. (Hunedorara); CALINESCU, Aurelian (Brasov); MUNTEANU, Valentin (Cluj); OPREA, Miron (Ploiesti); MIHAILEANU, N.; TIGANOIU, Al., inginer; Buicliu, Gh.; POPA, Eugen I. (Iasi)

Proposed problems. Gaz mat B 14 no.8:481-485 Ag '63.

1. Institutul Politehnic Bucuresti (for Herling).

1970, 1971

... ..

... ..

TECHNOLOGY

... ..

CONTESCU, I. ; MIHAILESCU, M. Gh.

Sedimentology of the Aptian deposits of Pietrosita, valley of
the Ialomita River. Studii cerc geol 6 no.3:473-511 . 1961

1. Comunicare prezentata de academician G. Murgeanu

MURGEANU, G., acad.; CONTESCU, L.; MIHAILESCU, N. Gh

Stratigraphy and sedimentology of the complex of red marls in the basins of the rivers Dimbovita and Ialomita, and problem of the Cretaceous-Paleogene limit. Studii cerc geol 7 no.2:213-239 '63.

MIHAILE Xu, Nicolae, ing.

Controlling welded seams of locomotive boilers. Rev sailor
fer 13 no.3.158-164 Mr '65.

W. VAHLECK, B.

TECHNOLOGY

Periodicals: TECHNICAL JOURNAL, Vol. 1, No. 1, Aug. 1962

MMA LEOP, B. Some observations on the behavior of a sintered cellulose
cooler plated inside with antiacid steel. J. 1962.

Monthly List of East European Accessions (1961), Vol. 1, No. 1,
February 1962, Unclass.

MIHAILESCU, Paul, ing.

Automation, telemechanical, and telecommunication equipment on
Rumanian railroads. Rev sailor fer 10 no.11:571-574, 578 N '62.

1. Directorul Directiei C.T.

MIHAILESCU, R.

Eliminating difficulties and deficiencies on the "Tudo Vladimirescu" Plant
where they hamper the fulfillment of the Production Plan. METALURGIA SI CONSTRUCTIA
DE MASINI (Metallurgy and Machine Construction.) 1:83:Jan 55

MIHAILESCU, R.

Improving the manufacturing and utilization of agricultural machines being produced in our country. METALURGIA SI CONSTRUCTIA DE MASINI (Metallurgy and Machine Construction.) 1:86:Jan 55

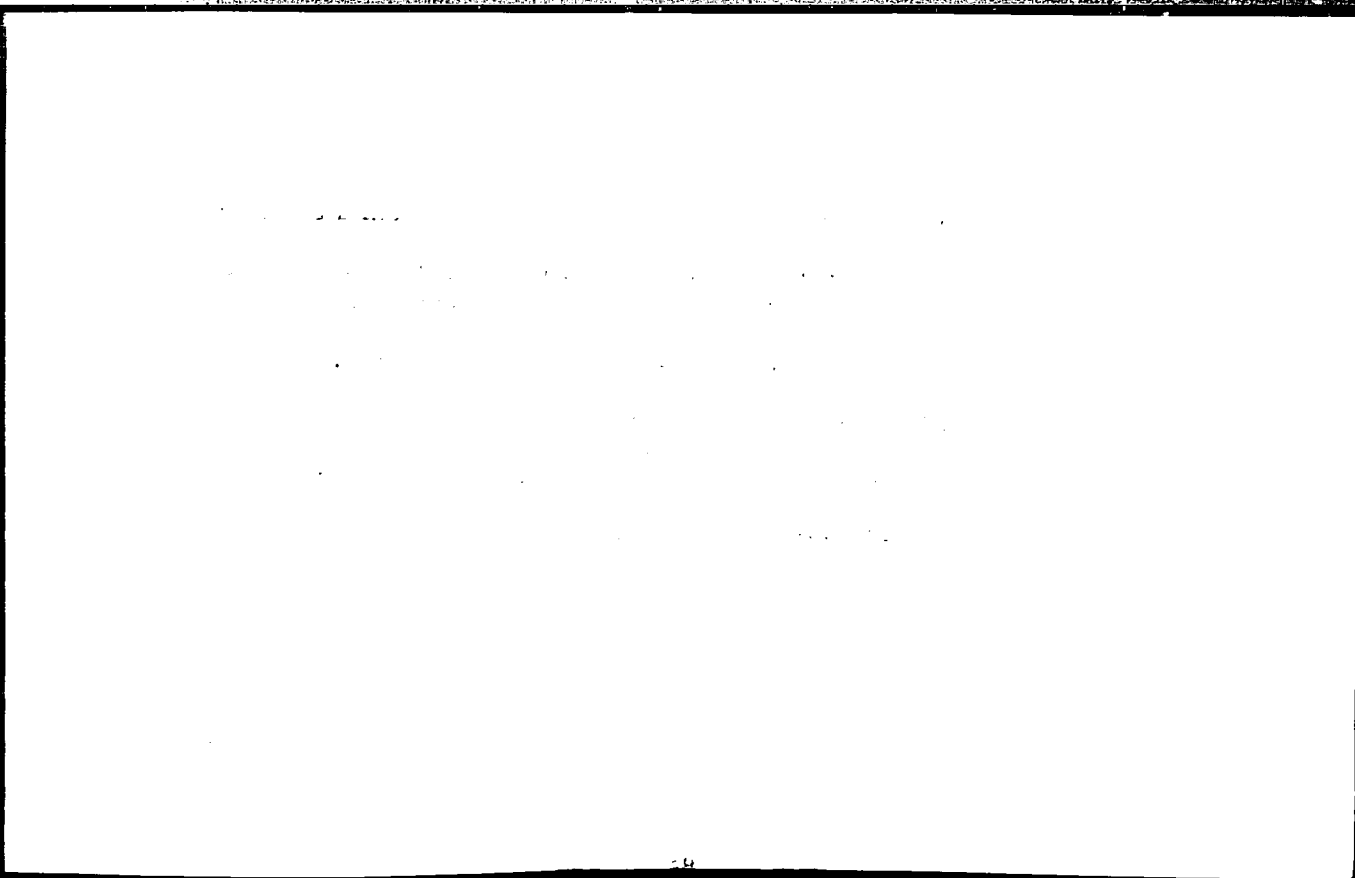
SIMIONESCU, Cr., prof.dr. ing.; CALISTRU, E., candidat in Stiinte Tehnice;
MIHAILESCU, S., ing.

Chemical cellulose obtained from reed (*Phragmites communis*)
grown in the Danube Delta. Cel hirtie 10 no.10:341-350 0*61

1. Membru Corespondent al Academiei R.P.R. (for Simionescu).

CALISTRU, E., ing.; MIHAILESCU, S., ing.

Laboratory research on the solubilization of some chemical cellulose
in alkalies. Cel hirtle 12 no.8/9:265-274 Ag-S '63.



MIHAILESCU, Silvia, cercetator (Bucuresti)

"Medicinal herbs in defense of human health, 1962" by [Farm.]
Corneliu Constantinescu. Reviewed by Silvia Mihailescu. *Natura
Biologie* 15 no.1:89-90 Ja-F '63.

MIHAILESCU, TIBERIU

Mihăilescu, Tiberiu. Sur les congruences de Ribaucour-Darboux. *Matematica*, Timișoara 22, 51-56 (1946).

Given a conjugate net N on a quadric Q , there exists a congruence Δ whose developables intersect Q in N and hence also in a second conjugate net N' . The nets N and N' are said to be related by a transformation of Ribaucour and Δ is said to be a congruence of Ribaucour-Darboux. Such a congruence is known to depend on two arbitrary functions of one variable. This paper studies such congruences using Pfaffian systems in involution. Some of the results may be stated in the following manner. A general congruence depends on two arbitrary functions of two variables. The congruences of Ribaucour-Darboux form a special class depending on one arbitrary function of two variables. Let Δ be such a congruence, Q the associated quadric and Δ' the congruence of the polar lines of the lines of Δ with respect to Q . Then Δ and Δ' are stratifiable in some sense; conversely, if Δ and its reciprocal Δ' with respect to a quadric Q are stratifiable in one sense, then one of Δ , Δ' is a congruence of Ribaucour-Darboux. In order that the focal points of the lines of a congruence Δ' be conjugate with respect to a quadric Q , it is necessary and sufficient that the polar congruence Δ of Δ' with respect to Q be a congruence of Ribaucour-Darboux with Q as the associated quadric.

V. G. Grove (East Lansing, Mich.)

Source: *Mathematical Reviews*,

Vol. 8 No. 2

MIHAILESCU, TIBERIU

2000

✓ Mihăilescu, Tiberiu. Sur l'intégration d'une équation Pfaffienne. Acad. Repub. Pop. Roum. Fil. Cluj. Stud. Cerc. St. 5 (1954), no. 1-2, 37-44. (Romanian. Russian and French summaries)
The equation considered is $dz = \omega_1 z^2 + \omega_2 z + \omega_3$, where $\omega_1 = \omega_2 = \omega_3 = 0$ is a passive Pfaffian system. If the rank of the Pfaffian system is three, it is shown that z is found without integration and involves two arbitrary functions of one variable. The solution is also carried out in particular cases where two of the ω 's are proportional.
J. M. Thomas (Durham, N.C.)

DMW
HLL

Mihăilescu, Tiberiu

Math

V Mihăilescu, Tiberiu. Variétés non-holonomes du type ~~Weyl~~ ~~Weyl~~. Acad. Repub. Pop. Romine. Stud. Cerc. Mat. 6 (1955), 175-192. (Romanian, Russian and French summaries.)

1 - P/W

1955

It is shown that in a three-dimensional projective space the non-holonomic surfaces V_n^3 , each of which has indeterminate focal curves of the congruence formed by its projective normals, exist and depend on four arbitrary functions of two arguments. The projective normals of each of these V_n^3 pass through a fixed point, so that these V_n^3 are the non-holonomic projective spheres. The non-holonomic surfaces V_n^3 , each of which has indeterminate focal curves of the congruence C formed by the polar lines of its projective normals with respect to the fundamental polarity determined by the surface, form another class of surfaces depending also on four arbitrary functions of two arguments and the lines of the congruence C for each of these V_n^3 are in a fixed plane. C. C. Hsiung.

ADW
292

16(1)

PHASE I BOOK EXPLOITATION

RUM/2937

Minăilescu, Tiberiu

Geometrie diferentia^l proiectivă (Projective Differential Geometry)
[București] Editura Academiei Republicii Populare Romine, 1958.
494 p. (Series: Biblioteca matematică, II) 2,000 copies printed.

No contributors mentioned.

PURPOSE: This book is intended as a textbook for advanced mathematics students.

COVERAGE: The author attempts to present in systematic order the results of the studies of various authors in projective differential geometry. Among the topics discussed are plane and space curves, surfaces, ruled surfaces, curves on surfaces and conjugate nets, and nonholonomic varieties. Except in Chapter I, where fundamentals necessary to understand subsequent chapters are presented, all problems are studied in three-dimensional projective space. No personalities are mentioned. There are 141 references: 15 Rumanian, 19 Soviet, 52 French, 21 Italian,

~~Card 17~~

SECRET

1. The information in this document is classified "Secret" because it contains information that is so classified.

VINAI S.M., Tiberiu (Bucuresti)

Projective differential invariants of ruled surfaces. Studia
Univ B-B S. Math-Fys 8 no.1:33-38 '63.

MIHAILESCU, Tiberiu (Bucarest 2, Str. Gala Galaction 20, Rumania)

Theory of correspondence between two linear nonholonomic varieties
of an ordinary projective space. Chekhosl mat zhurnal 13 no. 3:
435-472 S '63.

ILIESCU, C.C., prof.; DANESCU, C., dr.; MIHAILESCU, V., dr.

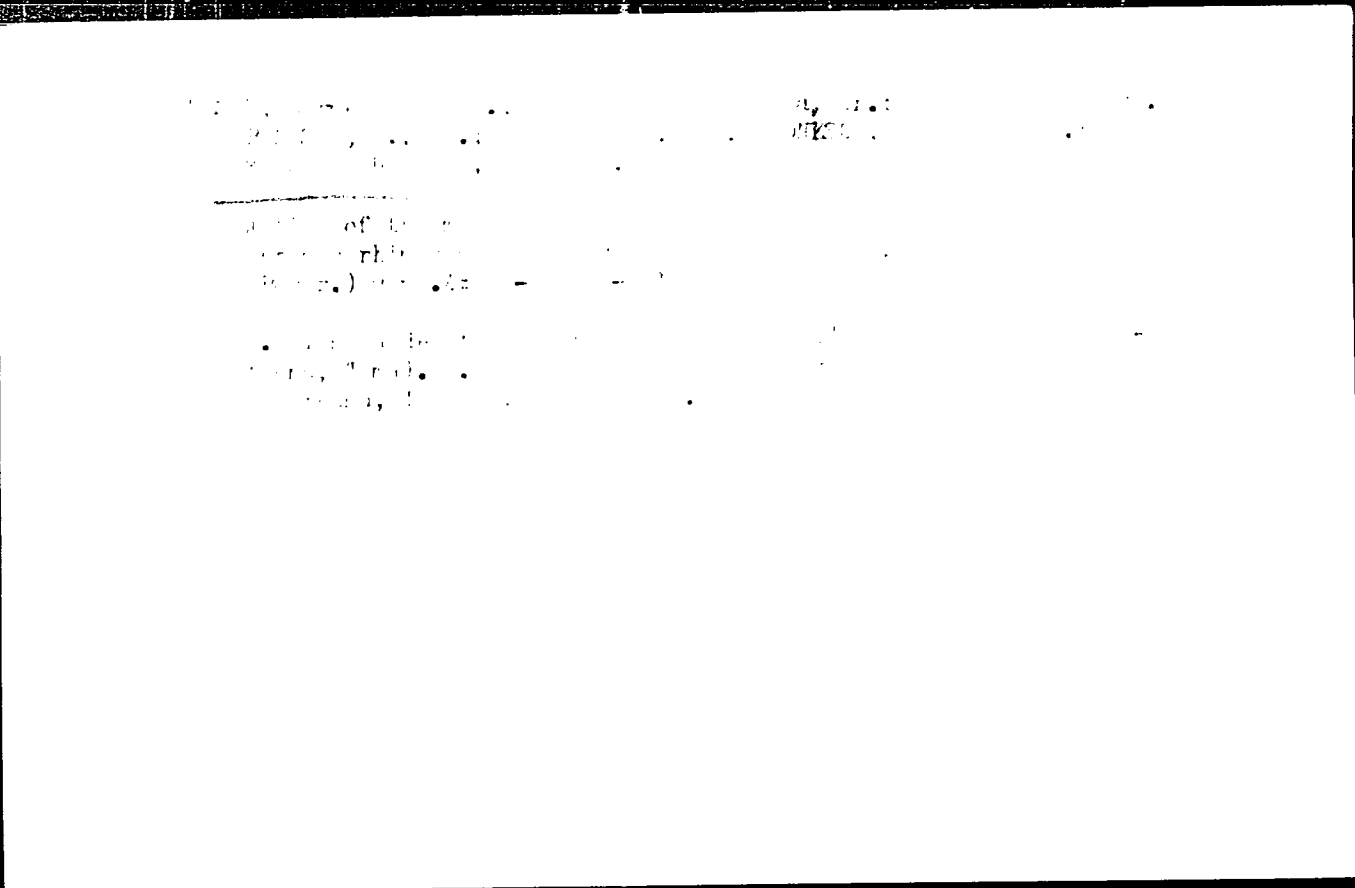
The treatment of arterial hypertension with darentin. Med intern.
15 no.2:225-228 F '63.

1. Lucrare efectuata la ASCAII, Bucuresti.
(HYPERTENSION) (BRETILUM COMPOUNDS)

PASTIU, V., dr.; MIHAILESCU, V., dr.; SVETZ, M., dr. ENESCU, N., dr.;
SBENGHE, S., dr.

The coronary syndrome in hypertensive patients. Med inter
15 no. 5:587-591 My '63.

1. Lucrare efectuata la ASCAR (director: prof. C.C. Iliescu)
(CORONARY DISEASE) (HYPERTENSION)



SECRET

TOP SECRET

CONFIDENTIAL

SECRET

CONFIDENTIAL

March

Minailascu, V.; Bann, A.

Geographical description of the Lamine River. Ita. p. 219.

HIROBIOLOGIA. (Academia Republicii Populare Romine. Comisiunea Nationala de Hidrobiologie si Ititologie) Bucuresti, Romania. Vol. 1, 1958.

Monthly list of East European Acquisitions (EEAI) LC, Vol. 1, no. 1, Aug. 1959

Uncl.

"HAI LESCU", V.

Landslides in Pucioasa, p. 51.

PROBLEME DE GEOGRAFIE. (Academia Republicii Populare Romine. Institutul de Cercetare Geografice)
Bucuresti, Rumania. Vol. 6, 1950.

Monthly list of East European Accessions (CEA) IC. Vol. 9, no. 2, August, 1950.

Incl.

MIHAILESCU, V.

"General geology" by Gr. Baileanu. Reviewed by V. Mihailescu.
Probleme geog 8:601-603 '61.

1. Membru al Comitetului de redactie "Probleme de geografie".

MIHAILESCU, Vintila prof. univ. (Bucuresti).

The gorge at the mouth of the Cerbul Valley (Bucuresti). Natura no. 13
no. 5:43-45 S-0 '61.

MIHAILESCU, V.; CONEA, Ion

Need of revising and systematizing the Rumanian geographical terminology. Probleme geog 9:21-26 '62. (publ. '63)

MIHAILESCU, V.; HERBST, C.; BACANARU, I.

Complex criteria of the functional classification of towns.
Probleme geog 9:35-44 '62. (publ. '63)

MIHAILESCU, Vintila

"Bases of general physical geography" by S.V.Kalesnik. Reviewed by
Vintila Mihailescu. Probleme geog 9:343-344 '62. (publ. '63)

MIHAILESCU, Vintila

"Physical geography of Bulgaria" by J.Gilibov, I.Ivanov, P.Pencev
(Penchev, P.), K.Misev [Mishev, K.], V.Nedelceva [Nedelcheva, V.].
Reviewed by Vintila Mihailescu. Probleme geog 9:353-356 '62.
(publ. '63)

MIHAILESCU, Vintila

Yalta, Sochi, Batumi. Impressions from an excursion of scientific information, organized by the Society of Natural Sciences and Geography; July 5-10, 1962. Natura Geografie 14 no.4:24-29 J1-Ag '62.

1. Director adjunct al Institutului de geologie si geografie al Academiei R.P.R.

MIHAILESCU, V. (Bucuresti)

Transcription of foreign geographical denominations. Natura
Geografie 15 no.3:87-89 My-Je '63.

MIHAILESCU, Vintila (Bucuresti)

The 20th International Geographical Congress. Natura Geografie
15 no.4:89-91 JI-Ag '63.

L 27175-00

ACC NR: AP6028854

SOURCE CODE: RU/0024/65/000/004/0006/0014

AUTHOR: Mihailescu, V. (Professor; Doctor) //

ORG: none

TITLE: Transversal Carpathian valleys

SOURCE: Natura. Seria geografie-geologie, no. 4, 1965, 6-14

TOPIC TAGS: physical geography, geomorphology

ABSTRACT:

A review article summarizing the principal facts and theories concerning the origin of various cross-valleys in the Carpathians. The author points out that most theories concerning the piercing mechanism of the Carpathian range by the Danube, Jiu, Olt and Mures are still in dispute, with the only mechanism which may be considered proved being the capture of the Dragan and Sebes by the Rapid Cris. Various views are presented on the origin of the valleys of the other streams as well as on the origin of the straits, partial valleys and other characteristic features of the area. [Based on author's Eng. abst.] Orig. art. has: 1 figure. [SPRS: 32,859]

SUB CODE: 08 / SUBM DATE: none / ORIG REF: 011 / OTH REF: 006

Card 1/1 *lll*

0917

2379

MIHAILESCU, V.; CUCU V. (Bucuresti)

Simion Mehedinți; his life and activity as a geographer.
Natura Geografie 16 no.5:9-15 S-0'64

1. The "X" is a professional...

...relations of the...
territorial systematization...
...between... 4829...

MINAI E. S. ... statement

Mitochondrial ...

1. polytomous ...
2. monomeric ...

RUMANIA/Human and Animal Physiology. The Skin.

V

Abs Jour: Ref. Zhur-Biol., No 6, 1958, 27447.

Author : Vintila V. Mihailescu

Inst :

Title : An Introduction to the Biochemistry of Skin Diseases.

Orig Pub: (Monogr. med., No 1). Bucuresti, Acd. RPR, 1956,
88 pp

Abstract: No abstract.

Card : 1/1

MIHAILESCU, V. V., Dr.

Comments on 3500 cases of arterial hypertension treated for at least 5 years. Med. int., Bucur. 8 no.3:404-409 July 56.

1. Lucrare efectuata la Centrul de asistenta a cardiacilor A.S.C.A.R. (director prof. C. C. Iliescu).

(HYPERTENSION, statist.

incidence, compl. & mortal., statist. of Rumanian clinic)

MIHAILESCU, V., Vintila

Chronic cor pulmonale. Med.int.,Bucur. 8 no.6:777-790 Oct 56.

(PULMONARY HEART DISEASE
chronic, etiol. & diag.)

MIHAILESCU, Vintila, V., Dr.

Functional pulmonary insufficiency during mitral stenosis. Med. int.,
Bucur. 9 no.7: 1069-1070 July 77.

(MITRAL STENOSIS, complications

pulm. insuff., funct., differ. diag. & manifest.)

(PULMONARY VALVE

insuff. in mitral stenosis, differ. diag. & manifest.)

MIHALIESCU, V.V.

Early differential diagnosis of arterial hypertension. Med. int., Bucur.
10 no.4:589-600 Apr 58.

(HYPERTENSION
etiol. & early differ. diag.)

EXCERPTA MEDICA Sec 18 Vol 3/9 Cardio. Dis. Sept. 59

2415. **Clinical considerations on aortic stenosis on the basis of a study of 198 cases**
Consideratii clinice asupra stenozei aortice pe baza studierii unui numar de 198 de cazuri. MIHAILESCU V. V. Centr. de Asistenta a Cardiacilor (Ascar) *Med. interna (Bucuresli)* 1958, 10/10 (1509-1519) Tables 6

There was pure aortic stenosis in 32 cases, aortic stenosis associated with aortic insufficiency in 102 cases and aortic stenosis associated with mitral stenosis in 64 cases. With the exception of the mitral association, the condition is well tolerated for many years (10-20 yr.). However, the mortality is high (20%), death occurring as a rule after the age of 40; once decompensation sets in, death generally ensues within 5 yr. Bacterial complications occur often, especially in men (8%); they are of particular severity.
Nicolaiesco - Bucharest (XVIII, 6*)

PASTIU, V.; SVET, M.; GHERMAN, A.; MALITCHI, E.; MIHAILESCU, V.

Cardiac insufficiency in mitral stenosis. Probl. card., Bucur.

4:301-312 '59.

(MITRAL STENOSIS, complications)

(HEART FAILURE CONGESTIVE, etiology)

MIHAILESCU, V.V., dr.

Classification and diagnosis of chronic myocardial diseases.
Med. intern., Bucur. 11 no. 12: 1859-1868 '59.

1. Lucrare efectuata in Clinica medicala a Spitalului Filantropia
(director prof. I. Bruckner) si la Centrul de asistenta a cardiacilor
- ASCAR - (Director, prof. C.C. Iliescu).
(MYOCARDIUM, diseases)

MIHAILESCU, V., dr.; ORBESCU, A. I., dr.

Considerations on non-specific acute pericarditis (with special reference to its differentiation from coronary lesions). Med. intern. 13 no.11:1559-1566 N '61.

(PERICARDITIS diagnosis)
(CORONARY DISEASE diagnosis)

MIHAILESCU, V.V., dr.; EFRAIM, M., dr.; ENESCU, R., dr.; CODRANU, R., dr.

Considerations on a case of constrictive pericarditis in a patient with auricular septal defect. Med. intern. 14 no.8:999-1002 Ag '62.

1. Lucrare efectuata la ASCAR, director: prof. C.C. Iliescu.
(HEART SEPTUM, ATRIAL) (HEART DEFECTS, CONGENITAL)
(PERICARDITIS)

Michael...

July, 1953

...

...

MIHAILESCU, V., dr.; LICHTIG-DINULESCU, E., dr.; CIONCA, H., dr.

Angina pectoris at rest, associated with arterial paroxysmal hypertension in rheumatic aortic insufficiency. Med. intern. 15 no.2: 241-246 F '63.

1. Lucrare efectuata in Clinica a IV-a medicala (director: prof. I. Bruckner, si la ASCAR, director: prof. C. Iliescu).
(ANGINA PECTORIS) (HYPERTENSION)
(RHEUMATIC HEART DISEASE) (AORTIC VALVE DISEASES)

ILIESCU, C.C. prof.; MIHAILESCU, V.V., dr.

Etiology and classification of arterial hypertension.

Med inter 15 no. 5:515-524 My '63.

(HYPERTENSION)

ILIESCU, C.C., prof.; MIHAILESCU, V.V.dr.; ENESCU, R. dr.;
PASTIU, V., dr.; SVETZ, M.dr.; SEENGHE, S.dr.; ARON, L., dr.;
CLEJ, V.dr.; MALITCHI, E., dr.; PIRLOG, C.dr.; RADESCU, R., dr.;
ILIESCU, A., dr.; CHIRILA, O., dr.; CRATU, S.

Natural history of arterial hypertension. Statistical observations
on 3800 cases followed up for at least 10 years.
Med inter 15 no. 5:563-571 My '63.

1. Lucrare efectuata la ASCA, Bucuresti.
(HYPERTENSION)

MIHAILESCU, V.V., dr.; ENESCU, H., dr.; PASTIU, V., dr.; SVETZ, M., dr.;
SBEINGHE, S., dr.

Arrhythmia in hypertensive patients. Med inter 15 no. 5:
531-585 My '63.
(HYPERTENSION) (ARRHYTHMIA)

SVETZ, M., dr.; MIHAILSCU, V.V., dr.; PASTIU, V., dr.; ENESCU, T., dr.;
SBENGHE, S., dr.

Cardiac insufficiency in arterial hypertension. Med inter 15
no. 5:593-598 My '63.

1. Lucrare efectuata la ASCAR (director: prof. C.C. Iliescu)
(HEART FAILURE, CONGESTIVE) (HYPERTENSION) (CORONARY DISEASE)

ROMANIA

MIHAILESCU, V.y., MD; ENESCU, R., MD.

A.S.C.A.R., Bucharest - (for all)

Bucharest, Medicina Interna, No 12, Dec 63, pp 1509-1514

"Ventricular Fibrillation as a Final Accident in Heart
Diseases. Its Treatment."

MIHAILESCU, V.V.; CELSO, E.

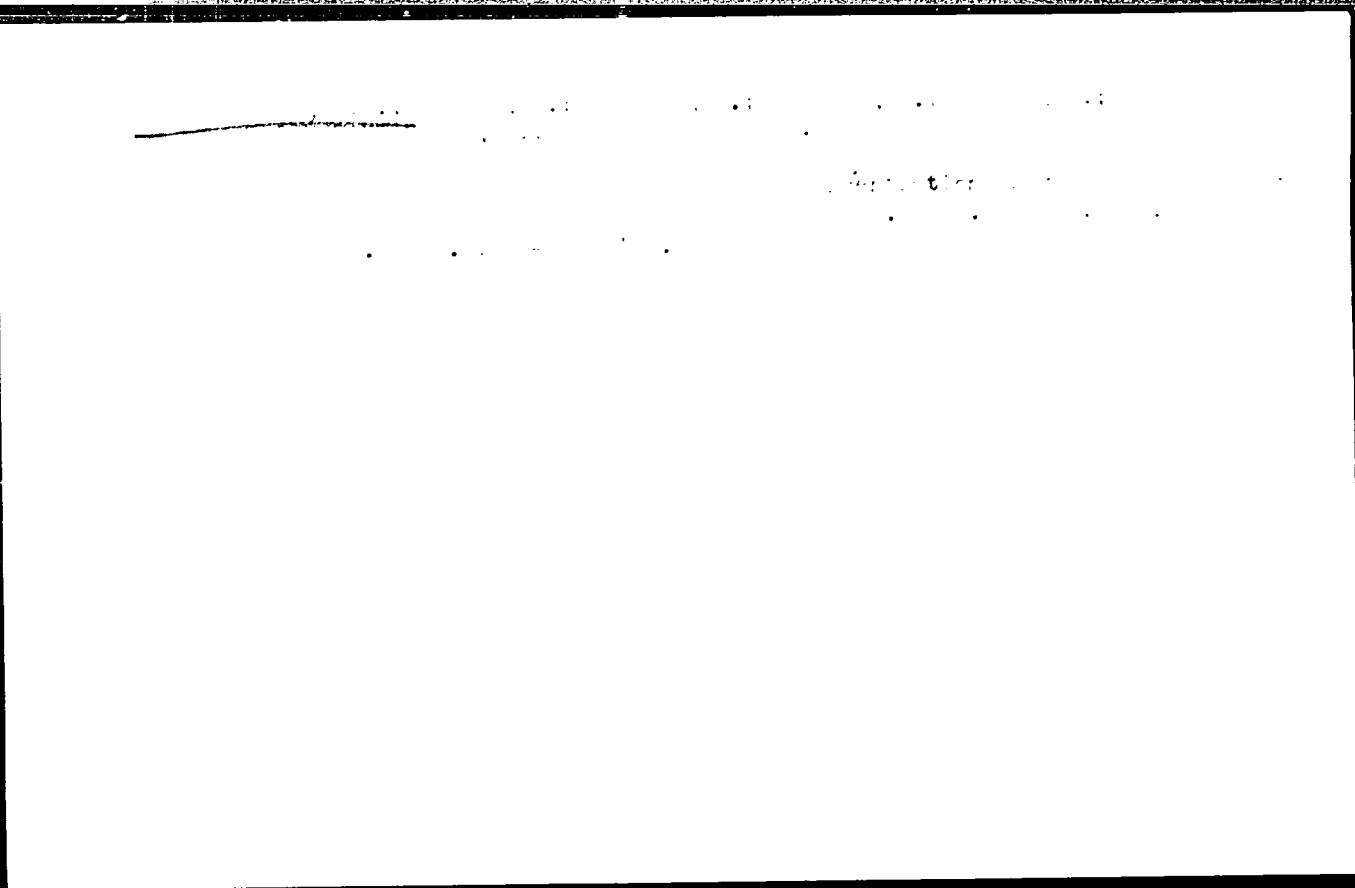
Lactic dehydrogenase in the diagnosis of coronary disease.
Stud . cercet. med. intern. 5 no.2:179-182 '64.

MIHAILESCU, V.V., dr.; CLEJ, V.dr.; ENESCU, R., dr.; SBENGHE, S., dr.

Considerations on the renal side-effects during treatment of
arterial hypertension. Med. intern. 16 no.1:79-82 Ja'64.

1. Lucrare efectuata la ASCAR (director: prof. C.C.Iliescu).

*



MIRANESCU, Y.; "TRAI" 1969, 4.

Application of the relaxation method to the computation of thin shells. p.417

STUDII SI COMUNICATI ECONOMICE. Academia Republicii Populare Romine
Bucuresti, Rumania
Vol. 10, no.3, 1969

Monthly List of East European Accessions (SEA) C., Vol. 7, no.1, Jan. 1969
Uncl.

MIHAILIDE, D., dr.; MIHAILESCU, N., dr.; IOSIPESCU, I., dr.

Vertebral degenerative rheumatism in heavy industry. Med. Intern.
14 no.7:813-817 J1 '62.

(SPINAL DISEASES)
(INDUSTRIAL MEDICINE)

(ARTHRITIS, RHEUMATOID)
(OCCUPATIONAL DISEASES)