

KUKLINSKI, Edward (Warszawa)

Use of foamed concrete for the insulation of cold stores.
Przepl budowl i bud mieszk 33 no.4:233 Ap'61

KUKLINSKI, Edward (Warszawa)

Possibilities of using heat insulating materials made of plastics,
in the building industry. Przegl budowl 34 no.3:161-163 Wr '62.

KUKLINSKI, Edward, mgr. inz.

Remarks on the new instruction for laying plastic floors.
Przeł budowl i bud mieszk 34 no.4/5:293 Ap-My '62.

KUKLINSKI, Edward, mgr. inż.

Experimental buildings made of plastics. Przegl budowl i bud
mieszk 34 no.7:439-440 J1 '62.

TVERDOVA, R.A.; ASTASHOVA, A.N.; YAKOVLEVA, A.V.; KUKLINSKIY, A.Ya.

Geochemistry of Lower and Middle Carboniferous oils and
bitumens in the deposits of Volgograd Province. Trudy VNIING
no.1:225-247 '62. (MIRA 16:10)

KUKLINSKIY, I.; NETREBINA, F.

Improve control over the safety and utilization of working capital.
Den. i kred. 21 no.10:23-26 0 '63. (MIRA 16:10)

1. Upravlyayushchiy Nizhne-Tagil'skim otdeleniyem Gosbanka (for
Kuklinskiy). 2. Nachal'nik kreditnogo otdela Nizhne-Tagil'skogo
otdeleniya Gosbanka (for Netrebina).

Kuklo, N. A.

AUTHOR: Kuklo, N. A.

TITLE: On Testing Stamping by the Eriksen Method (Ob ispytaniyakh na vydavlivaniye po Eriksenu)

PERIODICAL: Zavodskaya Laboratoriya, 1957, Vol. 23, No. 1, pp. 87-89 (U.S.S.R.)

ABSTRACT: The author finds it difficult to get several Eriksen instruments to operate in exactly the same way. A procedure is described in which an indicator is mounted on the instrument and the depth of the plunger's movement is recorded on it. The depth of the impression on the specimen is noted and the indicator is adjusted to show the same figure. This is repeated a number of times as shown by the tables: (1) the thickness of the strip in mm. and the difference between the figure shown on the indicator and the depth of the plunger's movement and (2) the dates of the tests run and the number of them each day with depths of plunger movement and deviations noted. These deviations are found not to depend on the kind of material stamped. There are 7 Slavic references.

Card 1/2

On Testing Stamping by the Eriksen Method

ASSOCIATION: "Red Etna" Factory (Zavod "Krasnaya Etna")

PRESENTED BY:

SUBMITTED:

AVAILABLE:

Card 2/2

KUKLO, N.A., inzh.

Mechanism of the occurrence of exfoliation on the surface of rolls used in cold rolling. Stal' 24 no.6:544-547 Je '64. (MIRA 17:9)

1. Zavod "Krasnaya Etna".

KUL'CHINSKIY, P.Ye., kand.med.nauk; KUKLOV, B.S., nauchnyy sotrudnik

Changes in the degree of oxygen saturation of the blood in pulmonary tuberculosis patients under the influence of chest surgery. Pat., klin.i terap.tub. no.8:285-288 '58.

(MIRA 13:7)

1. Iz khirurgicheskogo otdeleniya (rukovoditel' - kand.med.nauk P.Ye. Kul'chinskiy) i laboratorii klinicheskoy fiziologii (rukovoditel' - starshiy nauchnyy sotrudnik L.B. Aksel'rod) Odesskogo nauchno-issledovatel'skogo instituta tuberkuleza.
(TUBERCULOSIS) (BLOOD--OXYGEN CONTENT) (CHEST--SURGERY)

KUKLOV, B.S.

Rapid and effective method for collecting spilled mercury. Lab.
Memo 7 no.2:60-61 F '61. (MIRA 14:1)

1. Laboratoriya klinicheskoy fiziologii (rukovoditel' L.H. Aksel'rod)
Odeskogo nauchno-issledovatel'skogo instituta tuberkuleza.
(MERCURY) (LABORATORIES—APPARATUS AND SUPPLIES)

KUKLOV, B.S.

Simple and reliable device for continuous aeration of nutrient
media. Lab. delo 7 no.3:52-53 Mr '61. (MIRA 14:3)

1. Laboratoriya klinicheskoy fiziologii (rukovoditel' L.B.Aksel'rod)
Odesskogo nauchno-issledovatel'skogo instituta tuberkuleza.
(BACTERIOLOGY--CULTURES AND CULTURE MEDIA)

SHMUKLER, B.A., prof.; KUKLOV, B.S.

Neurohumoral shifts in tuberculosis of the urogenital system.
Urologiia 27 no.4:17-20 J1-Ag '62. (MIRA 15:11)

1. Iz laboratorii klinicheskoy fiziologii (zav. - I.B. Aksel'-
rod) i urologicheskoy kliniki (zav. - prof. B.A. Shmukler)
Odesskogo nauchno-issledovatel'skogo instituta tuberkuleza.
(GENITOURINARY ORGANS—TUBERCULOSIS) (NEUROCHEMISTRY)

KUKLOVA, J.

On the systemativ position of Ampeliptera limburgica Pruvost, 1927 (Insecta, Pro-
torthoptera) in English. p. 377

Prague. Ustredni ustav geologicky. VESTNIK. Praha, Czechoslovakia, Vol. 33,
no. 5, 1958

Monthly List of East European Accessions (EEAI), LC, Vol. 8, no. 11, Nov. 1959
Uncl.

KUKLOVA-STUROVA B.

Vyskum drazitvosti vegetativniho nervstva u tuberkulosnich pacientu. I. [Investigation on the irritability of the vegetative nervous system in tuberculosis] Bratisl. lek. listy 31:1-2 1951 p. 72-88.

1. Of the Clinic of Tuberculosis of Slovak University, Bratislava.

OPAL 20, 10, Oct. 51

KUKLOVA-STUROVA, B., prof. Dr; Cunderlik, J., Dr; JELINKOVA, A., Dr

Investigations on the tonus and irritability of the vegetative nervous system by means of electrocardiographic registration in orthostatic technic. Cas lek cs 93 no.16:417-424 Ap '54. (REAL 3:7)

1. Z kliniky tuberkulozy v Bratislave.
(AUTONOMIC NERVOUS SYSTEM, physiology.
*irritability & tonus, determ., ECG registration in orthostatic technic)

KUKLOVA-STUROVA, B. MUDr.

Study of the autonomic nervous system in bronchial asthma. Cas.
lek. cesk. 93 no.42:1163-1168 15 Oct 54.

1. Z kliniky tuberculozy v Bratislave
(AUTONOMIC NERVOUS SYSTEM, in various diseases
asthma)
(ASTHMA, physiology
eff. on autonomic NS)

KUKLOVA-STUROVA, B.

Method of examination of the vegetative nervous system. Bratisl.
lek.listy 35 no.8:459-468 30 Apr 55.

1. Z Kliniky tuberkulozy v Bratislave, prednostka prof. dr. B.
Kuklova-Sturova.

(AUTONOMIC NERVOUS SYSTEM, function test,
exam. methods)

KURLOVA-STUROVA, B.

SURNAME, Given Names

2

Country: Czechoslovakia

Academic Degrees: маккгггггггггг MD, Prof,

Affiliation: Tuberculosis Clinic (Klinika tuberkulozy), Bratislava; Director;
Prof B. STUROVA, MD.

Source: Prague, Rozhledy v Tuberkulose a v Nemocich Plicnich, Vol XXI, No 6, July 61,
pp 461-472.

Data: "Tuberculosis and the Autonomic Nervous System."

51

CZECHOSLOVAKIA

ORAVEC, D; KUKLOVA-STURCOVA, B

Third Department of Internal Medicine, Faculty of Medicine,
Comenius University (Katedra internej mediciny 3 Lek. fak.
Univerzity Komenskeho), Bratislava - (for both)

Bratislava, Bratislavske lekarске listy, No 1, January 1966,
pp 53-59

"The vegetative nervous system in thyropathies. Part 1; The
reactivity of the vegetative nervous system in thyrotoxicoses."

KUKLOVSKIY, G.M.,

Electro-encephalographic investigators of gymnasts during the performance of exercised.

Report submitted for the Czech. Medical Congress, Medical Society of
J.E. Purkyne, Prague, Czech. 12-17 Nov 1962

L 04940-67 EWT(d)/EWT(m)/EWP(w) IJP(c) EM

ACC NR: AP6029689 (A)

SOURCE CODE: UR/0369/66/002/004/0474/0478

AUTHOR: Romaniv, O. N.; Kuklyak, N. L.; Vyval', I. P.

ORG: Physics-Engineering Institute, AN UkrSSR, L'vov (Fiziko-mekhanicheskiy institut UkrSSR)

TITLE: The effect of high temperature thermomechanical treatment on the cyclic strength of high-carbon steels

SOURCE: Fiziko-khimicheskaya mekhanika materialov, v. 2, no. 4, 1966, 474-478

TOFIC TAGS: high carbon steel, cyclic stress, high temperature effect, cyclic strength, thermomechanical property

ABSTRACT: The mechanical properties under cyclic stress of the steels 9KhS (0.92% carbon) and ShKh15 (0.98% carbon) were determined after heat treatment at 850 C under applied torque. The treatment resulted in anisotropic properties, as shown in asymmetric stress cycles by an increase in strength and plasticity under direct static load, i.e., in the direction of torque applied during treating. The strength increase was up to twice the value measured on the control specimen, whereas the strength in the inverse direction of stress decreased.

Card 1/2

L 04940-67

ACC NR: AP6029689

The oriented strength increase of steel after treating under load is achieved primarily by homogenization of weak points and internal stresses. Orig. art. has: 4 tables and 3 figures.

SUB CODE: 11/ SUBM DATE: 18Mar66/ ORIG REF: 003/ OTH REF: 003

kh

Card 2/2

Kukn, David

RUMANIA / Human and Animal Physiology. Liver. T

Abs Jour: Ref Zhur-Biol., No 5, 1958, 22316.

Author : Kosmulesku, Safiresku, Maksimilyan, Miron,
Kukn, David.

Inst : Not given.

Title : Considerations On Changes of Residual Chromium
in Certain Liver Diseases.

Orig Pub: Probl. Terap. 1957, 6, 7-18.

Abstract: The value of residual chromium (VRC) is normal or near normal (0.73) in the blood plasma of patients with mild forms of epidemic hepatitis (EH). In cases of EH of moderate severity the VRC is more frequently elevated (1.2-1.8), but even in severe cases of EH it does not exceed 2. In chronic hepatitis the VRC rises to 2.3-3 and

Card 1/2

88

RUMANIA / Human and Animal Physiology. Liver

Abs Jour: Ref Zhur-Biol., No 5, 1958, 22316.

Abstract: reaches values above 3 in cirrhosis. The VRC varies from 1.09 to 4.25 in congested liver or cardiac cirrhosis, which apparently depends upon the condition of the liver (congestion or cirrhosis). The VRC remained unchanged in repeated determinations and indicated a persistent disorder of intermediate carbohydrate metabolism (glycolysis).

Card 2/2

KUKOBA, A. (pos.Grigor'yevka Aktyubinskoy obl.)

One would like to have more than just a "pay load." Sov.
profsoiuzy 18 no.4:24 F '62. (MIRA 15:3)
(Grigor'yevka (Aktyubinsk Province)--Trade unions)

KUKOBA, N. H.

GOKUN, Vladimir Borisovich; LUR'YE, G.B., professor, doktor tekhnicheskikh nauk, retsenzent; KUKOBA, N.A., inzhener, redaktor; GUL'KO, M.M., inzhener, redaktor; SOROKA, M.S., redaktor izdatel'stva; RUDEHSKIY, Ya.V., tekhnicheskiy redaktor

[Technological requisites for metal economy; reducing technological waste] Tekhnologicheskie predposylki ekonomii metalla; snizhenie tekhnologicheskikh otkhodov. Kiev, Gos.nauchno-tekhn.izd-vo mashinostroit.lit-ry, 1957. 181 p. (MIRA 10:8)
(Machinery industry)

ACC NR: AP7004804 (A) SOURCE CODE: UR/0413/67/000/001/0143/0143

INVENTOR: Kloba, Yu. P.

ORG: None

TITLE: A device for mounting a tire on a wheel on a conveyor. Class 63, No. 19228

SOURCE: Izobreteniya, promyshlennyye obratzys, tovarnyye znaki, no. 1, 1967, 143

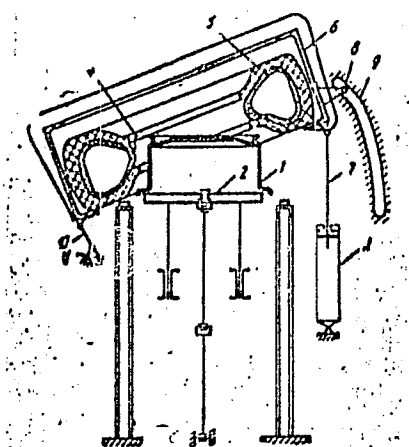
TOPIC TAGS: tire, vehicle component, pneumatic device

ABSTRACT: This Author's Certificate introduces a device for mounting a tire on a wheel on a conveyor. The installation consists of a tire hoist, a step conveyor which delivers the wheels, a rotating table for centering the rim band and a pneumatic cylinder for forcing the tire onto the wheel. The unit is designed for automating the process of mounting a tire on a wheel with an opening for the air valve. The table for forcing the tire onto the wheel is equipped with a working tool made in the form of a frame with clamps. One side of this frame is hinged to the rod of a double-action pneumatic cylinder and connected by a roller to a template. The other end of the frame is hinged through a strap to a bracket on the table.

Card 1/2

UDC: 629.11.012.555.002.54

ACC NR: AP7004804



1--wheel; 2--rotating table; 3--pneumatic cylinder; 4--air valve; 5--inner tube;
6--frame with clamps; 7--pneumatic cylinder rod; 8--roller; 9--template; 10--strap;
11--bracket

SUB CODE: 13/ SUBM DATE: 07May62

Card 2/2

ACC NR: AP6032527

(A)

SOURCE CODE: UR/0413/66/000/017/0124/0125

INVENTOR: Kukoba, Yu. P.

ORG: none

TITLE: Hydraulic valve with pressure drop. Class 47, No. 185650

SOURCE: Izobreteniya, promyshlennyye obraztsy, tovarnyye znaki, no. 17, 1966, 124-125

TOPIC TAGS: hydraulic equipment, hydraulic device, hydraulic valve, ~~pressure drop,~~
~~VALVE, PRESSURE REGULATOR~~

ABSTRACT: The proposed hydraulic valve with a pressure reduction consists of a housing, a slide, and an adjustable ball valve. In order to relieve the excess

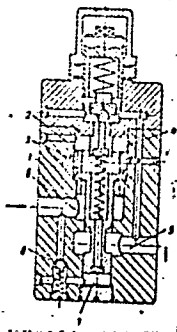


Fig. 1. Hydraulic valve

- 1 - Housing; 2 - valve slide; 3 - annular grooves;
- 4 - cavity above the slide; 5 - drain; 6 - pressure groove;
- 7 - cavity below the slide; 8 - ball check valve.

Card 1/2

UDC: 621.646. 82:62-338

ACC NR: AP6032527

pressure when a given pressure in the system is reached, the valve housing and the slide are provided with annular grooves, connecting the valve's cavity above the slide with the drain, when the given pressure in the system is reached. In order to improve operation in a variation of this valve, a ball check valve is added between the pressure groove and below the slide's cavity (see Fig. 1). Orig. art. has: 1 figure.

SUB CODE: 13 / SUBM DATE: 28Oct64/

Card 2/2

KUKOC, A.

19 19
 angular correlations in thulium-169. S. D. Kolicki,
 J. Simic, and A. Kukoc (Inst. Nuclear Sci. "Boris Kidric,
 Belgrade, Yugoslavia). *Nuclear Phys.* 10, 412-17(1959).
 It was found that both *K*-forbidden transitions of 177 and
 198 e.kv. are mixts. of *M1* and *E2* multipoles. The magni-
 tudes and the interference signs of these mixts. was also
 found. Norman E. Fickering.

KE30
 KE31
 6
 OR

KOICKI, S.D.; KUKOC, A.H.; RADOJEVIC, M.P.; SIMIC, J.M.

Investigation of 5.5 hours $^{180\text{m}}\text{Hf}$ isomeric state decay. Bul
Inst Nucl 13 no.3:1-13 0 '62.

1. Department of Physics.

KUKOC

Italian merchant marine during postwar period. (To be contd.) Medun
transp 7 no.9:823-824 S '61.

KUKOC, E.

Protectionism of particular countries in maritime transportation.
Medun transp 7 no.12:1099-1102 D '61.

KUKOC, Eduard

Protectionism in maritime affairs. Medun transp 8 no.1:9-11
Ja '62.

KUKOC, Eduard

Prospects of the development of goods transportation on the
Danube River. Medun transp 8 no.3:180-185 Mr '62.

KUKOC, Eduard

Bulgarian shipbuilding and shipping. Medun transp 8 no.8:542-545
Ag '62.

1. Clan Redakcionog odbora, "Medunarodni transport".

KUKOC, Eduard

Development of the Italian merchant marine during the postwar period. Medun transp 7 no.10:909-916 0 '61.

KUKOC, Eduard

International market of tonnage during the postwar period. Medun
transp 7 no.11:991-1001 N '61.

(Tonnage)

KUKOC, Eduard

Observing the 20th anniversary of the Yugoslav Navy and Merchant Marine. Medun transp 8 no.10:664-665 0 '62.

1. Clan Redakcionog odbora, "Medunarodni transport".

KUKOC, Eduard

Present state and prospective development of bulk freight transportation in international trade. Medun transp 8 no.11:768-771 N '62.

1. Clan Redakcionog odbora, "Medunarodni transport."

KUKOC, Eduard

Problems of the maritime line for South America. Medun transp 8
no.12:855-858 D '62.

1. Clan Redakcionog odbora, "Medunarodni transport".

KUKCC, E.

Development of the Yugoslav overseas trade. Medun transp 9 no.6:
395-396 Je '63.

1. Clan Redakcionog odbora, "Medunarcdni transport".

ENKOC, Eduard

Crisis in the shipbuilding of Great Britain. Medun transp 9
no.3:169-171 Mr '63.

1. Clan Redakcionog odbora, "Medunarodni transport."

KUKOG, Eduard

Dambe River, prospective serious competitor to traditional sea routes. Medun transp 9 no.3:193-195 Mr '63.

KUKOC, Eduard

Leaders of the Soviet maritime lines. Medun transp 9 no.7:
455-456 JI'63.

1. Clan Redakcionog odbora, "Medunarodni transport".

KUKOC, Eduard

Importance of Yugoslav seaports for the national economy.
Medum transp 9 no.9:582-585 S '63.

1. Clan Redakcionog odbora, "Medunarodni transport".

KUKOC, Eduard

Prospective development of the scrapping of obsolescent foreign and Yugoslav ships. Medun transp 9 no.10:644-645 0'63.

1. Clan Redakcionog odbora, "Medunarodni transport".

KUKOC, Eduard

Development to date and prospects of the Yugoslav merchant marine from the standpoint of transport. Medun transp 9 no. 11: 720-724 N '63.

1. Clan Redakcionog odbora, "Medunarodni transport".

KUKOC, Eduard

Maritime transport orientation of some inland countries. Medun transp
10 no.1:19-21 Ja '64.

1. Clan Redakcionog odbora, "Medunarodni transport".

KUKOC, E.

Present conditions and the prospects of developing the
invisible trade foreign currency inflow. Medun transp
10 no. 5:310-312 My '64.

KUKOC, Edvard

Maritime conferences on the agenda of the United Nations Trade
and Development Conference. Medun transp 10 no. 6:406-407 Je '64.

SECRET

with implications of the Trade and Development Conference in Geneva
about sea transport. Madun Group 10 no. 1012 10 1964.

RUKOJ, E.

The port policy in various European countries. Merina transp
10 no.8:577-579 Ag '64.

Influence of river waterways on the fluctuations in the merchandise
turnover and traffic through Adriatic ports. Merina transp 10 no.8:
605-606 Ag '64.

KUKOL, J.

The development of electric equipment furnishing a direct current of 3000 volts for the electrified lines of Czechoslovak railroads.

P. 204 (Zeleznicni Technika) Vol. 5, No. 8, Aug. 1957, Czechoslovakia

SO: MONTHLY INDEX OF EAST EUROPEAN ACCESSIONS (EEAI) LC. - VOL. 7, NO. 1, JAN. 1958

KUKOL, Jan, inz.

Development and prospect of the electrification of Czechoslovak
State Railroads. Zel dop tech 12 no.8:202 '64.

BARTA, Vladislav, inz.; BOCHNAK, Bohumil, inz.; KUKOL, Jan, inz.

The plan of technical development of railroad transportation for
1963. Zález dop tech 10 no.12:353-354 '62.

BARTA, Ladislav, inz.; BOCHNAL, Bohumil, inz.; KUKOL, Jan, inz.

Technical development in railroad transportation; discussion. Zel
dop tech 10 no.10:289-290 '62.

KUKOL, L.

Do not forget the chestnut tree. p. 11.
LES, Bratislava, Vol. 1, no. 3, Mar. 1954.

80: Monthly List of East European Accessions, (EEAL), LC, Vol. 4, no. 10, Oct. 1955,
Uncl.

KUKOL, Ladislav, inz.

Do we not neglect the sharpening of woodworking tools?
Drevo 18 no.4:160-161 Ap '63.

1. Novy domov, n.p., Spisska Nova Ves.

KUKOL, Ladislav, inz.

Furniture quality and basic materials. Drevo 19 no.5:191 My '64.

1. Novy domov, Spisska Nova Ves.

SKOROBOGATOV, Stepan Varlamovich, inzh.; KUKOL', Vladimir
Veniaminovich, inzh.; KOVAL', P.V., dots., kand. tekhn.
nauk, retsenzent;

[Mining and construction machinery] Gornoprokhodcheskie i
stroitel'nye mashiny. Moskva, Izd-vo "Nedra," 1964. 292 p.
(MIRA 17:6)

KUKOL', V.V.

One of the factors in the nonuniform wearing of open-hearth
furnace arches and the selection of the optimum cross-section
for the working chamber. Trudy Ukr. nauch.-issl. inst. met
no.6:99-114 '60. (MIRA 14:3)

(Open-hearth furnaces)

KUKOL', V.V.

Distribution of energy radiated by the cylindrical surface of
a gray body. Trudy Ukr. nauch.-issl. inst. met. no.6:90-98 '60.
(MIRA 14:3)

(Heat--Radiation and absorption)
(Surfaces, Isothermic)

SANDLER, N.I.; KUKOL', V.V.

X-ray study of the effect of titanium on the properties and
structure of low-alloy manganese (1.5 percent manganese) steel.
Trudy Ukr. nauch.-issl.inst.met. no.6:230-237 '60. (MIRA 14:4)
(Manganese steel--Metallurgy) (Titanium)

S/126/60/010/005/025/030
E111/E452

AUTHORS: Golik, V.R., Dubrov, V.A., Sandler, N.I. and
Kukol, V.V.

TITLE: Influence of Vanadium on Phase Transformations in
Manganese Steel

PERIODICAL: Fizika metallov i metallovedeniye, 1960, Vol.10, No.5,
pp.786-790

TEXT: The authors give results of a study of the influence of vanadium on the kinetics of the decomposition of the solid solution, carbide formation and solution of vanadium carbides in manganese steel. Three types of steel with about 0.15% C and 1.5% Mn were used: type $\Phi 57$ (F57) had a vanadium content of 0.57%, corresponding to the stoichiometric composition of vanadium carbide; $\Phi 11$ (F11) corresponding to that in production heats (0.11% V); and the third type $\Phi 0$ (F0) had no vanadium. Blanks (20 x 20 x 8 mm bars and 8 x 80 mm cylinders) from hot-rolled strip were cut along the direction of rolling and hardened from 1200°C in water at 4°C. The blanks were then reheated to 100 to 1200°C, again quenched and cut into specimens, from which the

Card 1/2

✓

S/126/60/010/005/025/030
E111/E452

Influence of Vanadium on Phase Transformations in Manganese Steel

decarburized layer was removed. Phase changes were studied by measuring electrical resistivity, coercive force, hardness and integral half width of X-ray diffraction lines. In the X-ray investigation, published methods (Ref.4,5) were used. Resistivity, coercive force and Rockwell hardness are shown in Fig.1, 2 and 5 respectively, as functions of reheating temperature for each of the steels. Fig.4 shows for type F57 steel the values of Vickers hardness and integral half-width as functions of reheating temperature. The results indicate that the effects of vanadium in steels with the manganese content used are similar to those in steels with the usual (0.5% approx) manganese content. There are 5 figures, 1 table and 7 references: 6 Soviet and 1 Non-Soviet. ✓

ASSOCIATION: Ukrainskiy nauchno-issledovatel'skiy institut metallov
(Ukrainian Metals Research Institute)

SUBMITTED: May 9, 1960

Card 2/2

S/137/62/000/002/117/1
A060/A101

AUTHORS: Orlov, A. V., Sandler, N. I., Kukol', V. V., Aleksandrova, N. P.,
Govor, U. S.

TITLE: Investigation of the borated layer of medium-carbon steel

PERIODICAL: Referativnyy zhurnal, Metallurgiya, no. 2, 1962, 105, abstract 21709
("Sb. tr. Ukr. n.-i. in-t metaliov", 1961, no. 7, 232 - 244)

TEXT: Using the methods of microscopic and X-ray structure analysis, an analysis was carried out of the structure of borated layer of steel 40 subjected to borating by the method of electrolyzing molten borax at 960°C at a current density of 0.2 ampere/cm² and 5-hour duration. The structure of the borated layer of steel 40 consists of the α-phase, carbide B₄C, borides FeB and Fe₂B, which, as one recedes from the surface, appear in the following order: α-Fe, B₄C, borides. The microhardness has the greatest value at the surface and decreases gradually with approach to the base metal. There are 16 references.

T. Fedorova

[Abstracter's note: Complete translation]

Card 1/1

S/181/62/004/003/026/045
B125/B102

AUTHOR: Kukol', V. V.

TITLE: Impracticability of the methods used and the results obtained in studies of the substructure of crystals by Fourier analysis of the shape of a single diffraction line


PERIODICAL: Fizika tverdogo tela, v. 4, no. 3, 1962, 724 - 735

TEXT: The methods of the Fourier analysis of the shape of one line hitherto used are found to be imperfect and all contradictions in publications dealing with this subject are demonstrated. The present paper was presented at the sed'moye Vsesoyuznoye soveshchaniye po primenenii rentgenovskikh luchey k issledovaniyu materialov (Seventh All-Union Congress on the Use of X-rays for the Investigation of Materials.) in Leningrad, June 19 - 25, 1961. The good agreement of the function $(1 - F_n) n^{-1} \approx D^{-1}$ ✓

+ B_n does not prove the correctness of the definition of the required quantity. $F_n = F_n^0 F_n^{pu}$ are the microdistortions of the lattice, D the mean dimensions of the regions of coherent X-ray scattering, $B = 2\pi^2 l^2 c^2$, l is Card 1/3

Impracticability of the ...

S/181/62/004/003/026/045
B125/B102

the order of the reflection. If the curve representing the function
 $A_t = \int_{-\infty}^{\infty} f(x) \cos(\pi tx/\lambda) dx$ and the corresponding tangent for $t=0$ were accurate,
 they would always lead to $(dA/dt)_{t=0} = 0$. $f(x)$ is the true shape of the
 line unknown in explicit form. The straight lines $(1-A_t)t^{-1} = b_2 t$ do not
 permit a separate determination of D and ξ and are regarded as useless. 
 With $n=0$, D cannot be determined, even in rough approximation, from the
 formula of E. F. Bertaut $-(dF_n^0/dn)_{n=0} = D^{-1}$ (C. R., 228, 492, 1949; Acta
 Crystallogr., 3, 14, 1950). Also the values of D found by V. Hauk and C.
 Hummel (Z. Metallkunde, 47, 254, 1956) do not approach the true value of
 this quantity. Also the error theory of A. Kochendoerfer and U. Wolfstieg
 (Z. Electrochem., 61, 83, 1957) and the new method for determining D based
 on it may lead to wrong conclusions. Especially, the correct result cannot
 be found when the lines are widened only due to microdistortions of the
 lattice. There are 4 figures and 49 references: 32 Soviet and 17 non-
 Soviet. The four most recent references to English-language publications
 read as follows: R. Garrod, J. Auld. Acta Metallurgica, 3, 190, 1955;
 Card 2/3

Impracticability of the ...

S/181/62/004/003/026/045
B125/B102

J. Despujols, B. E. Warren. J. Appl. Phys., 29, 195, 1958; O. T. Guentert,
B. E. Warren, J. Appl. Phys., 29, 40, 1958; B. E. Warren. Acta Crystallogr.,
8, 483, 1955.

ASSOCIATION: Ukrainskiy nauchno-issledovatel'skiy institut metallov
Khar'kov (Ukrainian Scientific Research Institute of Metals,
Khar'kov)

SUBMITTED: December 19, 1960 (initially), and November 20, 1961 (after
revision)

Card 3/3

KUKOL', V.V.

Determination of the position of the maximum K -component of the doublet of an X-ray diffraction line from the profile of a broadened doublet line. Zav.lab. 29 no.1:55-59 '63.

(MIRA 16:2)

1. Ukrainskiy institut metallo.

(X rays--Diffraction)

KUKOL', V.V.

More precise definition of certain formulae and concepts in the theory underlying Fourier's analysis of the profile of X-ray interferences. Kiristolografiia 8 no.5:812-813 S-O '63.

Simplified method for determining the position of the maximum of the true profile of the broadened X-ray diffraction line of a crystal. 813-814 (MIRA 16:10)

1. Ukrainskiy nauchno-issledovatel'skiy institut metallov.

KUKOL', V.V.

Method of separation of components of doublet of X-ray diffraction
lines. Zav.lab. 29 no.5:575-578 '63. (MIRA 16:5)

1. Ukrainskiy institut metallov, Khar'kov.
(X rays--Diffraction)

S/0032/64/030/004/0441/0445

ACCESSION NR: AP4033612

AUTHOR: Kukol', V. V.

TITLE: Determining true diffraction broadening of x-ray interference using universal electronic computer machines

SOURCE: Zavodskaya laboratoriya, v. 30, no. 4, 1964, 441-445

TOPIC TAGS: electronic computer, Fourier coefficient, diffraction line profile, integral relation, Simpson rule, doublet

ABSTRACT: The electronic computer M-3 was used to determine the Fourier coefficients of the true diffraction line profiles of $f(x)$ and $h(x)$, related by the integral relation

$$h(x) = \int g(x-y)f(y)dy.$$

The method was similar to the one used by A. R. Stokes (Proc. Phys. Soc., 61, 382, 1948) and also included an approximation of the integral equation by a set of linear equations, and all integrals were evaluated either by the trapezoidal or by Simpson's rule. The original data consisted of two hundred or more experimentally obtained ordinates of the curves $h(x)$ and $g(x)$. As an example, the diffraction
Card 1/2

ACCESSION NR: AP4033612

lines of K α -doublet with a maximum distance between them of $a = 6$ was used. The numerical method was then compared with the exact solution, and agreement found to be excellent. Orig. art. has: 3 formulas, 2 figures, and 2 tables.

ASSOCIATION: Ukrainskiy institut metallov (Ukrainian Institute of Metals)

SUBMITTED: 00

ENCL: 00

SUB CODE: MA,DP

NO REF SOV: 007

OTHER: 004

Card 2/2

KUKOLECA, S.

Analyzing and estimating the organization of a metallurgic enterprise.
II. Evaluation of operations in 1953, p. 481, TEHNIKA, (Savez inženjera
i tehnicara Jugoslavije) Beograd, Vol. 9, No. 3, 1954

SOURCE: East European Accessions List (EEAL) Library of Congress,
Vol. 5, No. 8, Aug. 1956

KUKOLECA, S.

Economic_al analysis in production enterprises. p. 1180

TEHNIKA, Beograd, Vol 10, No. 8, 1955

SO: EEAL, Vol 5, No. 7, July 1956

KUKOLECA, S.

KUKOLECA, S. Management of Yugoslav industrial enterprises. p. 6.

Vol. 10, No. 10, Oct. 1956.

TOBTERMELES

TECHNOLOGY

Budapest, Hungary

Sc: East European Accession, Vol. 6, No, 2, Feb. 1947

KUKOLECA, S.

Influence of planning instruments on the economic aspect of business enterprises and on the amount of means used. p. 1091. TEHNKA (Savaz inzenjera i tehnicara Jugoslavije) Beograd. Vol. 11, no. 7, 1956

SOURCE: East Europe Accession List (EEAL),
Library of Congress, Vol. 5, no. 11, Nov. 1956

KUKOLECA, S.

Profitability of production. p. 1257. TEHNKA (Savaz inzenjera i
techicara Jugoslavije) Beograd. Vol. 11, no. 8, 1956.

SOURCE: East Europe Accession List (EEAL),
Library of Congress, Vol. 5, no. 11, Nov. 1956.

KUKOLECA, S.

Production factors and their measurement. p. 1433.
(Tehnika, Vol. 11, no. 10, 1956. Beograd, Yugoslavia)

SO: Monthly List of East European Accessions. (EEAL) LC, Vol. 6, No. 7,
July 1957. Uncl.

KUKOLECA, S.

The place of business enterprises in our economic system. p. 1577.
(Tehnika, Vol. 11, no. 10, 1956. Beograd, Yugoslavia)

SO: Monthly List of East European Accessions. (EEAL) LC. Vol. 6, No. 7,
July 1957. Uncl.

KUKOLECA, Stevan, dr, vanredni profesor (Lole Ribara 12, Beograd)

Organizing the service of control in enterprises. Tehnika
Jug 17 no.5: ~~Supla~~ Organizacija rada 12 no.5:993-1002 May '62.

1. Tehnoloski fakultet Univerziteta u Beogradu. Clan Redakcionog
odbora, "Organizacija rada," i redaktor rubrike "Ekonomika,
metodika i tehnika rada."

KUKOLECA, Stevan, dr., vanredni profesor

"Systematic influence on the results of production" by Vukan
Desic. Reviewed by S. Kukoleca. Tehnika Jug 17 no.3:606-607
'62.

1. Tehnoloski fakultet Univerziteta u Beogradu; redaktor rubrike
"Ekonomika, metodika i tehnika rada", "Organizacija rada."

KUKOLECA, Stevan, dr., vanredni prof.

"Fundamentals of the organization of enterprises" by Dr. Zivko Kostic. Reviewed by S. Kukoleca. Tehnika Jug 17 no.4:811-812 Ap '62.

1. Tehnoloski fakultet Univerziteta u Beogradu; clan Redukcionog odbora, "Organizaciji rada" i redaktor rubrike "Ekonomika, metodika i tehnika rada".

KUKOLEGA, Stevan, dr, prof.

Formation of income, and principles of its distribution. Tehnika
Jug:Suppl.:Organizacija rada 13 no.1:196-204b Ja '63.

I. Tehnoloski fakultet Univerziteta u Beogradu.

SHRAYBER, L.S.; KUKOLENKO, O.V.

Method for the precision measurements of the density of liquids
over a wide range of temperatures. Zhur. fiz. khim. 39 no.2:521-
523 F '65. (MIRA 18:4)

1. Saratovskiy gosudarstvennyy universitet.

KUKOLEV, A. S.

USSR/Medicine, Veterinary - New Drugs Aug 53

"Administration of Piroplasmin in Combination With Other Drugs," Vet Phys I. F. Yegorov and A. S. Kukolev

Veterinariya, Vol 30, No 8, pp 19-21

The fact that piroplasmin is very effective in the treatment of cattle infected with Haemosporidia has been known for a long time. Piroplasmin, however, produces pronounced secondary symptoms in horses. This makes its use in a pure state inadvisable. Morphiplasmin has, therefore, been substituted for the treatment of horses affected with piroplasmosis.

265T37

Subcutaneous injection of a dose of 3-5 ml of this drug to 12 horses resulted in recovery from that infection. Morphiplasmin consists of a 1% soln of morphine hydrochloride and 15 g of piroplasmin in 300 ml of sterile distilled water. Morphiplasmin is supplied in ampules, each containing 4-5 ml of the soln.

KUROLEV, A. S.

USSR/Medicine - Veterinary, Drugs; Piroplasmosis

Card 1/1

Author : Yegorov, I. F., Candidate in Veterinary Sciences, and Kurolev, A. S.,
Veterinary Physician

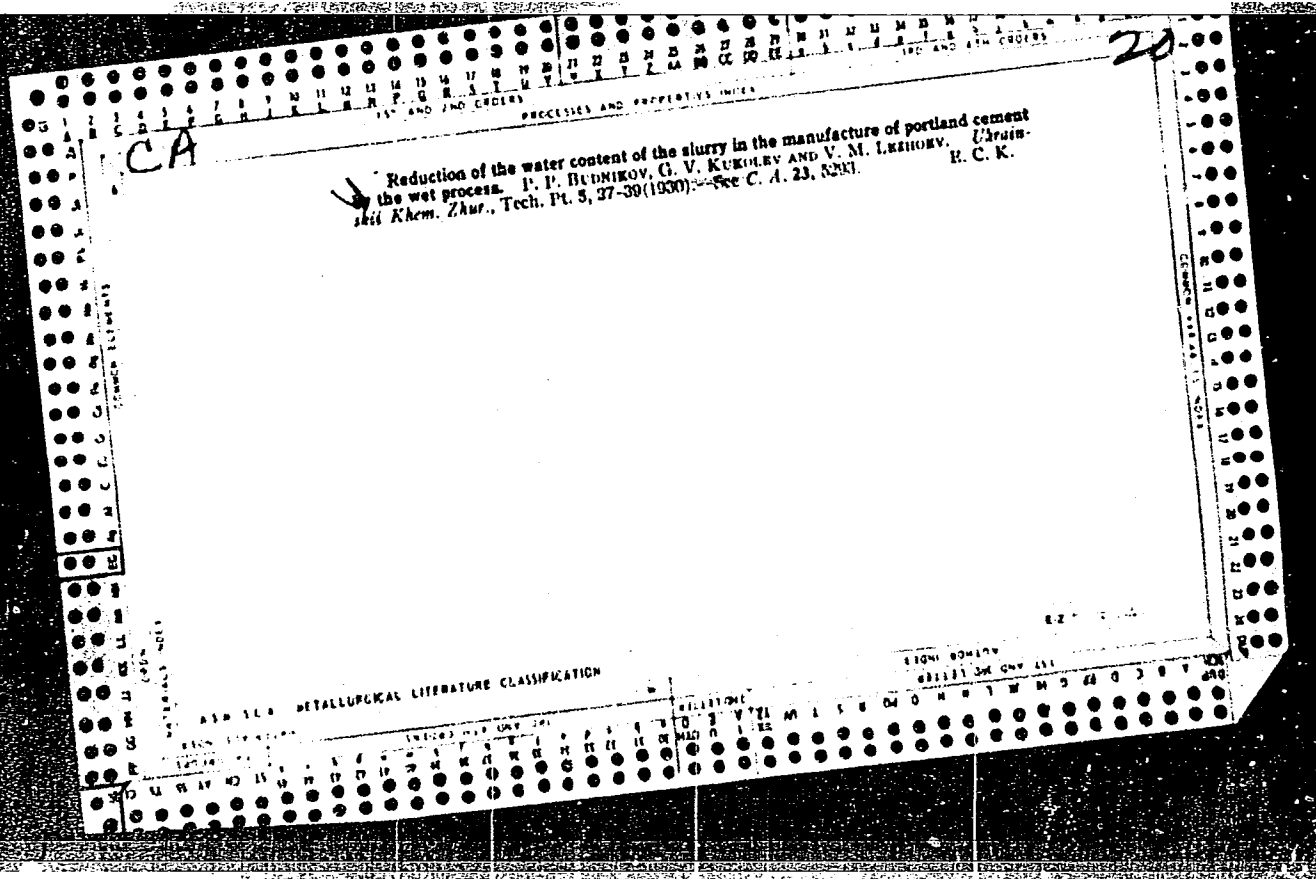
Title : Comparative evaluation of morphiplasmin and haemosporidin

Periodical : Veterinariya, 31, 28-32, Apr 1954

Abstract : Morphiplasmin is more satisfactory than haemosporidin in the treat-
ment piroplasmosis in cattle. In ampules morphiplasmin retains its
chemotherapeutic properties for a period of 3 years and remains
suitable for treating animals infected with Haemosporidia. Storage
at a temperature between -10° and -14°C for 15 days does not lower
its effectiveness against babesiasis in cattle and piroplasmosis in
horses and dogs. Table; graphs.

Institution :

Submitted :



Microfilm frame containing a document page. The page features a large handwritten letter 'R' in the top left corner. The central text reads:

Kukolev, Taubin, and Koslov. QUALITY OF PRODUCTS
OF THE SIBCA BRICKWORKS AT PANTRESIMONOVKA
Ukrain. Nibkoly, 1931 (11-12) 324-31

The form includes various headers and footers:

- Top header: 1ST AND 2ND LETTER, AUTHOR INDEX, 3RD AND 4TH LETTER, MATERIALS INDEX
- Right margin: METALLURGICAL LITERATURE CLASSIFICATION
- Bottom header: 1ST AND 2ND LETTER, AUTHOR INDEX, 3RD AND 4TH LETTER, MATERIALS INDEX
- Vertical labels on the left and right sides: COMMON VARIABLES INDEX, COMMON STANDS

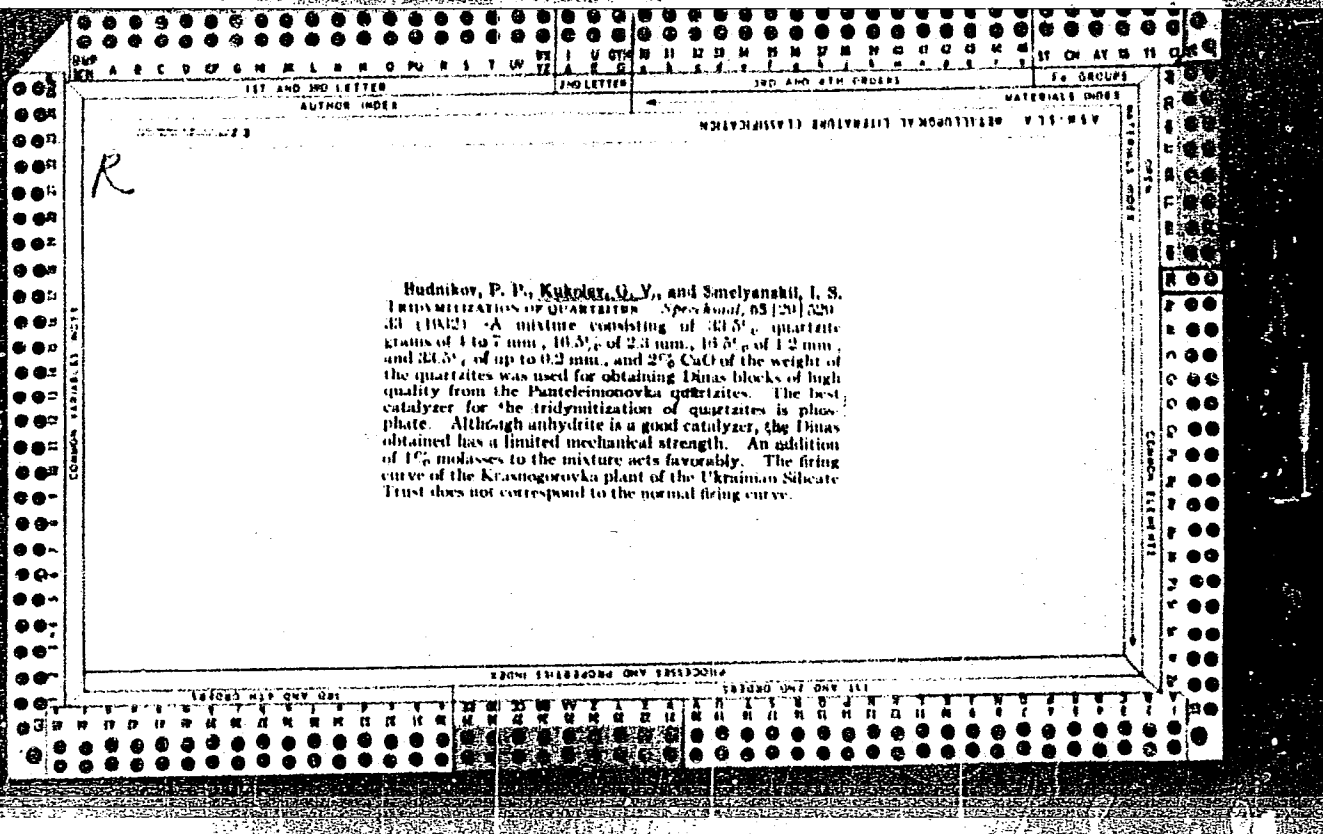
1ST AND 2ND LETTER 3RD AND 4TH LETTER 5TH AND 6TH LETTER 7TH AND 8TH LETTER
 A B C D E F G H I J K L M N O P Q R S T U V W X Y Z A B C D E F G H I J K L M N O P Q R S T U V W X Y Z A B C D E F G H I J K L M N O P Q R S T U V W X Y Z A B C D E F G H I J K L M N O P Q R S T U V W X Y Z

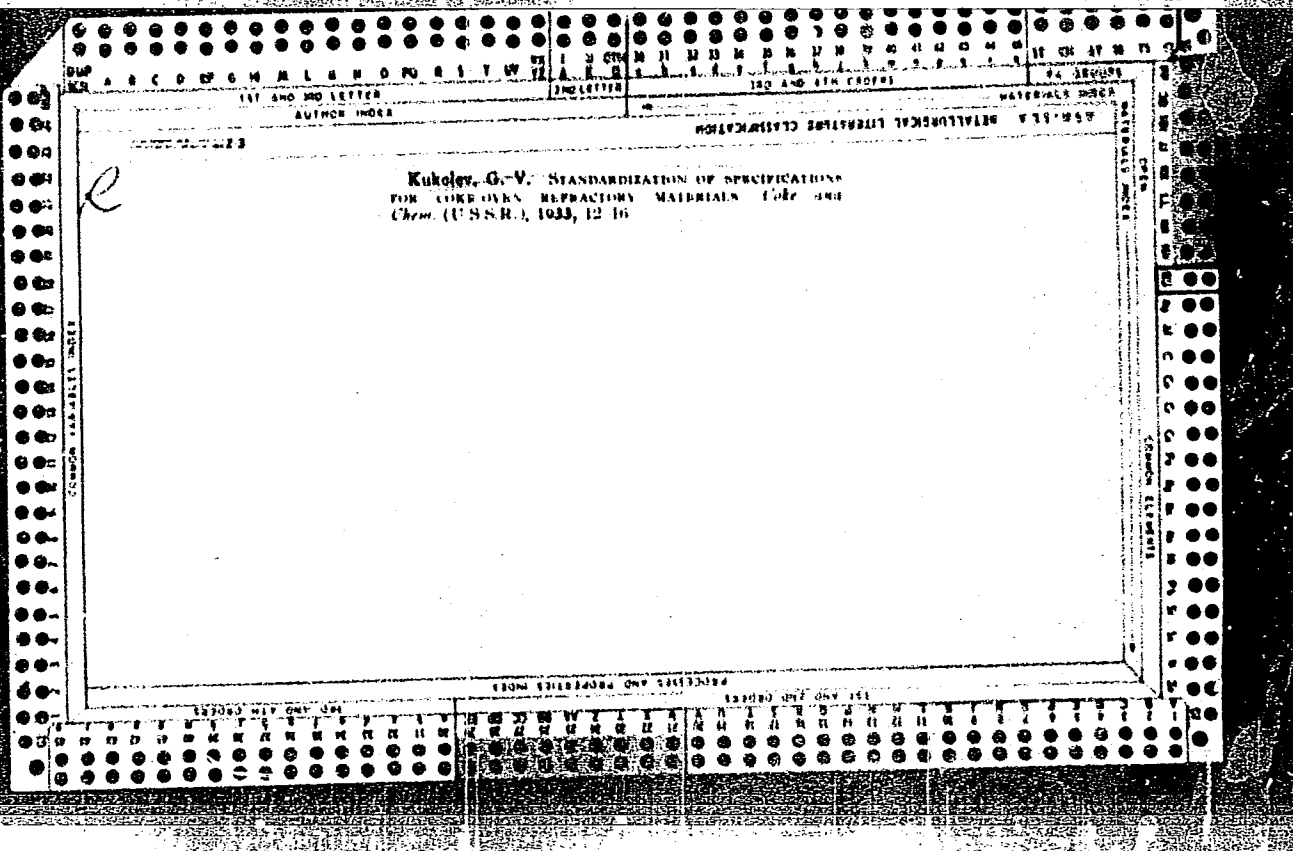
AGENCY INDEX MATERIAL INDEX

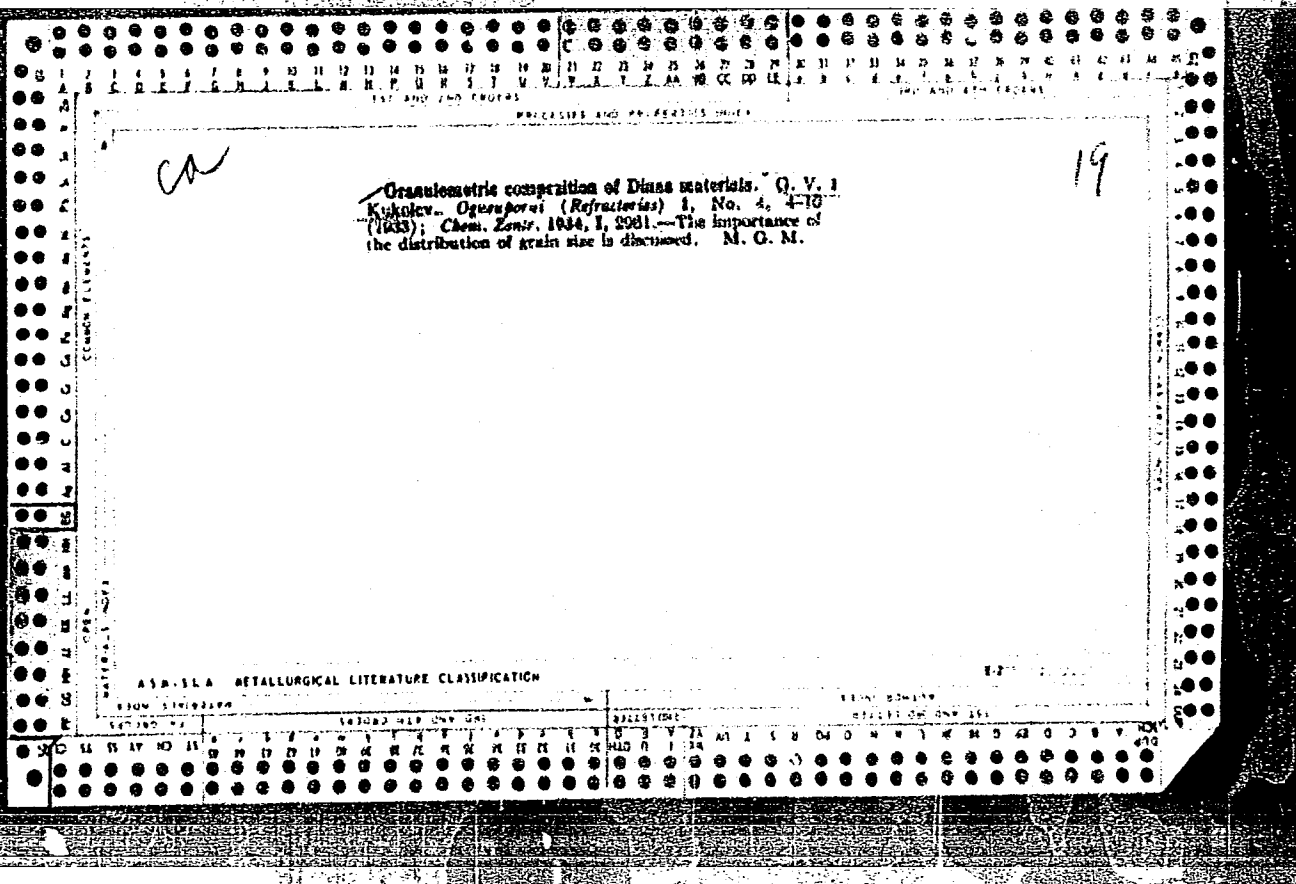
R

BUDNIKOV, P. P., KUKOLEV, G. Y., and SMELYANSKI, I. S.
 REFRACTORY MATERIALS FOR COKE KILNS. *Trans. Ukrainian Research Inst. Hyd. Metals*, No. 21, 80 (1951).—
 The authors discuss (1) conditions of work of refractories in coke kilns, (2) kinds and quality of refractories for them, and (3) behavior of Dinas and half acid brick used in coke kilns.

1950 1951 1952 1953 1954 1955 1956 1957 1958 1959 1960 1961 1962 1963 1964 1965 1966 1967 1968 1969 1970 1971 1972







1 2 3 4 5 6 7 8 9 10 11 12 13 14 15 16 17 18 19 20 21 22 23 24 25 26 27 28 29 30 31 32 33 34 35 36 37 38 39 40 41 42 43 44 45 46 47 48 49 50 51 52 53 54 55 56 57 58 59 60 61 62 63 64 65 66 67 68 69 70 71 72 73 74 75 76 77 78 79 80 81 82 83 84 85 86 87 88 89 90 91 92 93 94 95 96 97 98 99 100

101 102 103 104 105 106 107 108 109 110 111 112 113 114 115 116 117 118 119 120 121 122 123 124 125 126 127 128 129 130 131 132 133 134 135 136 137 138 139 140 141 142 143 144 145 146 147 148 149 150 151 152 153 154 155 156 157 158 159 160 161 162 163 164 165 166 167 168 169 170 171 172 173 174 175 176 177 178 179 180 181 182 183 184 185 186 187 188 189 190 191 192 193 194 195 196 197 198 199 200

201 202 203 204 205 206 207 208 209 210 211 212 213 214 215 216 217 218 219 220 221 222 223 224 225 226 227 228 229 230 231 232 233 234 235 236 237 238 239 240 241 242 243 244 245 246 247 248 249 250 251 252 253 254 255 256 257 258 259 260 261 262 263 264 265 266 267 268 269 270 271 272 273 274 275 276 277 278 279 280 281 282 283 284 285 286 287 288 289 290 291 292 293 294 295 296 297 298 299 300

301 302 303 304 305 306 307 308 309 310 311 312 313 314 315 316 317 318 319 320 321 322 323 324 325 326 327 328 329 330 331 332 333 334 335 336 337 338 339 340 341 342 343 344 345 346 347 348 349 350 351 352 353 354 355 356 357 358 359 360 361 362 363 364 365 366 367 368 369 370 371 372 373 374 375 376 377 378 379 380 381 382 383 384 385 386 387 388 389 390 391 392 393 394 395 396 397 398 399 400

401 402 403 404 405 406 407 408 409 410 411 412 413 414 415 416 417 418 419 420 421 422 423 424 425 426 427 428 429 430 431 432 433 434 435 436 437 438 439 440 441 442 443 444 445 446 447 448 449 450 451 452 453 454 455 456 457 458 459 460 461 462 463 464 465 466 467 468 469 470 471 472 473 474 475 476 477 478 479 480 481 482 483 484 485 486 487 488 489 490 491 492 493 494 495 496 497 498 499 500

501 502 503 504 505 506 507 508 509 510 511 512 513 514 515 516 517 518 519 520 521 522 523 524 525 526 527 528 529 530 531 532 533 534 535 536 537 538 539 540 541 542 543 544 545 546 547 548 549 550 551 552 553 554 555 556 557 558 559 560 561 562 563 564 565 566 567 568 569 570 571 572 573 574 575 576 577 578 579 580 581 582 583 584 585 586 587 588 589 590 591 592 593 594 595 596 597 598 599 600

601 602 603 604 605 606 607 608 609 610 611 612 613 614 615 616 617 618 619 620 621 622 623 624 625 626 627 628 629 630 631 632 633 634 635 636 637 638 639 640 641 642 643 644 645 646 647 648 649 650 651 652 653 654 655 656 657 658 659 660 661 662 663 664 665 666 667 668 669 670 671 672 673 674 675 676 677 678 679 680 681 682 683 684 685 686 687 688 689 690 691 692 693 694 695 696 697 698 699 700

701 702 703 704 705 706 707 708 709 710 711 712 713 714 715 716 717 718 719 720 721 722 723 724 725 726 727 728 729 730 731 732 733 734 735 736 737 738 739 740 741 742 743 744 745 746 747 748 749 750 751 752 753 754 755 756 757 758 759 760 761 762 763 764 765 766 767 768 769 770 771 772 773 774 775 776 777 778 779 780 781 782 783 784 785 786 787 788 789 790 791 792 793 794 795 796 797 798 799 800

801 802 803 804 805 806 807 808 809 810 811 812 813 814 815 816 817 818 819 820 821 822 823 824 825 826 827 828 829 830 831 832 833 834 835 836 837 838 839 840 841 842 843 844 845 846 847 848 849 850 851 852 853 854 855 856 857 858 859 860 861 862 863 864 865 866 867 868 869 870 871 872 873 874 875 876 877 878 879 880 881 882 883 884 885 886 887 888 889 890 891 892 893 894 895 896 897 898 899 900

901 902 903 904 905 906 907 908 909 910 911 912 913 914 915 916 917 918 919 920 921 922 923 924 925 926 927 928 929 930 931 932 933 934 935 936 937 938 939 940 941 942 943 944 945 946 947 948 949 950 951 952 953 954 955 956 957 958 959 960 961 962 963 964 965 966 967 968 969 970 971 972 973 974 975 976 977 978 979 980 981 982 983 984 985 986 987 988 989 990 991 992 993 994 995 996 997 998 999 1000

1001 1002 1003 1004 1005 1006 1007 1008 1009 1010 1011 1012 1013 1014 1015 1016 1017 1018 1019 1020 1021 1022 1023 1024 1025 1026 1027 1028 1029 1030 1031 1032 1033 1034 1035 1036 1037 1038 1039 1040 1041 1042 1043 1044 1045 1046 1047 1048 1049 1050 1051 1052 1053 1054 1055 1056 1057 1058 1059 1060 1061 1062 1063 1064 1065 1066 1067 1068 1069 1070 1071 1072 1073 1074 1075 1076 1077 1078 1079 1080 1081 1082 1083 1084 1085 1086 1087 1088 1089 1090 1091 1092 1093 1094 1095 1096 1097 1098 1099 1100

1101 1102 1103 1104 1105 1106 1107 1108 1109 1110 1111 1112 1113 1114 1115 1116 1117 1118 1119 1120 1121 1122 1123 1124 1125 1126 1127 1128 1129 1130 1131 1132 1133 1134 1135 1136 1137 1138 1139 1140 1141 1142 1143 1144 1145 1146 1147 1148 1149 1150 1151 1152 1153 1154 1155 1156 1157 1158 1159 1160 1161 1162 1163 1164 1165 1166 1167 1168 1169 1170 1171 1172 1173 1174 1175 1176 1177 1178 1179 1180 1181 1182 1183 1184 1185 1186 1187 1188 1189 1190 1191 1192 1193 1194 1195 1196 1197 1198 1199 1200

1201 1202 1203 1204 1205 1206 1207 1208 1209 1210 1211 1212 1213 1214 1215 1216 1217 1218 1219 1220 1221 1222 1223 1224 1225 1226 1227 1228 1229 1230 1231 1232 1233 1234 1235 1236 1237 1238 1239 1240 1241 1242 1243 1244 1245 1246 1247 1248 1249 1250 1251 1252 1253 1254 1255 1256 1257 1258 1259 1260 1261 1262 1263 1264 1265 1266 1267 1268 1269 1270 1271 1272 1273 1274 1275 1276 1277 1278 1279 1280 1281 1282 1283 1284 1285 1286 1287 1288 1289 1290 1291 1292 1293 1294 1295 1296 1297 1298 1299 1300

1301 1302 1303 1304 1305 1306 1307 1308 1309 1310 1311 1312 1313 1314 1315 1316 1317 1318 1319 1320 1321 1322 1323 1324 1325 1326 1327 1328 1329 1330 1331 1332 1333 1334 1335 1336 1337 1338 1339 1340 1341 1342 1343 1344 1345 1346 1347 1348 1349 1350 1351 1352 1353 1354 1355 1356 1357 1358 1359 1360 1361 1362 1363 1364 1365 1366 1367 1368 1369 1370 1371 1372 1373 1374 1375 1376 1377 1378 1379 1380 1381 1382 1383 1384 1385 1386 1387 1388 1389 1390 1391 1392 1393 1394 1395 1396 1397 1398 1399 1400

1401 1402 1403 1404 1405 1406 1407 1408 1409 1410 1411 1412 1413 1414 1415 1416 1417 1418 1419 1420 1421 1422 1423 1424 1425 1426 1427 1428 1429 1430 1431 1432 1433 1434 1435 1436 1437 1438 1439 1440 1441 1442 1443 1444 1445 1446 1447 1448 1449 1450 1451 1452 1453 1454 1455 1456 1457 1458 1459 1460 1461 1462 1463 1464 1465 1466 1467 1468 1469 1470 1471 1472 1473 1474 1475 1476 1477 1478 1479 1480 1481 1482 1483 1484 1485 1486 1487 1488 1489 1490 1491 1492 1493 1494 1495 1496 1497 1498 1499 1500

1501 1502 1503 1504 1505 1506 1507 1508 1509 1510 1511 1512 1513 1514 1515 1516 1517 1518 1519 1520 1521 1522 1523 1524 1525 1526 1527 1528 1529 1530 1531 1532 1533 1534 1535 1536 1537 1538 1539 1540 1541 1542 1543 1544 1545 1546 1547 1548 1549 1550 1551 1552 1553 1554 1555 1556 1557 1558 1559 1560 1561 1562 1563 1564 1565 1566 1567 1568 1569 1570 1571 1572 1573 1574 1575 1576 1577 1578 1579 1580 1581 1582 1583 1584 1585 1586 1587 1588 1589 1590 1591 1592 1593 1594 1595 1596 1597 1598 1599 1600

1601 1602 1603 1604 1605 1606 1607 1608 1609 1610 1611 1612 1613 1614 1615 1616 1617 1618 1619 1620 1621 1622 1623 1624 1625 1626 1627 1628 1629 1630 1631 1632 1633 1634 1635 1636 1637 1638 1639 1640 1641 1642 1643 1644 1645 1646 1647 1648 1649 1650 1651 1652 1653 1654 1655 1656 1657 1658 1659 1660 1661 1662 1663 1664 1665 1666 1667 1668 1669 1670 1671 1672 1673 1674 1675 1676 1677 1678 1679 1680 1681 1682 1683 1684 1685 1686 1687 1688 1689 1690 1691 1692 1693 1694 1695 1696 1697 1698 1699 1700

1701 1702 1703 1704 1705 1706 1707 1708 1709 1710 1711 1712 1713 1714 1715 1716 1717 1718 1719 1720 1721 1722 1723 1724 1725 1726 1727 1728 1729 1730 1731 1732 1733 1734 1735 1736 1737 1738 1739 1740 1741 1742 1743 1744 1745 1746 1747 1748 1749 1750 1751 1752 1753 1754 1755 1756 1757 1758 1759 1760 1761 1762 1763 1764 1765 1766 1767 1768 1769 1770 1771 1772 1773 1774 1775 1776 1777 1778 1779 1780 1781 1782 1783 1784 1785 1786 1787 1788 1789 1790 1791 1792 1793 1794 1795 1796 1797 1798 1799 1800

1801 1802 1803 1804 1805 1806 1807 1808 1809 1810 1811 1812 1813 1814 1815 1816 1817 1818 1819 1820 1821 1822 1823 1824 1825 1826 1827 1828 1829 1830 1831 1832 1833 1834 1835 1836 1837 1838 1839 1840 1841 1842 1843 1844 1845 1846 1847 1848 1849 1850 1851 1852 1853 1854 1855 1856 1857 1858 1859 1860 1861 1862 1863 1864 1865 1866 1867 1868 1869 1870 1871 1872 1873 1874 1875 1876 1877 1878 1879 1880 1881 1882 1883 1884 1885 1886 1887 1888 1889 1890 1891 1892 1893 1894 1895 1896 1897 1898 1899 1900

1901 1902 1903 1904 1905 1906 1907 1908 1909 1910 1911 1912 1913 1914 1915 1916 1917 1918 1919 1920 1921 1922 1923 1924 1925 1926 1927 1928 1929 1930 1931 1932 1933 1934 1935 1936 1937 1938 1939 1940 1941 1942 1943 1944 1945 1946 1947 1948 1949 1950 1951 1952 1953 1954 1955 1956 1957 1958 1959 1960 1961 1962 1963 1964 1965 1966 1967 1968 1969 1970 1971 1972 1973 1974 1975 1976 1977 1978 1979 1980 1981 1982 1983 1984 1985 1986 1987 1988 1989 1990 1991 1992 1993 1994 1995 1996 1997 1998 1999 2000

2001 2002 2003 2004 2005 2006 2007 2008 2009 2010 2011 2012 2013 2014 2015 2016 2017 2018 2019 2020 2021 2022 2023 2024 2025 2026 2027 2028 2029 2030 2031 2032 2033 2034 2035 2036 2037 2038 2039 2040 2041 2042 2043 2044 2045 2046 2047 2048 2049 2050 2051 2052 2053 2054 2055 2056 2057 2058 2059 2060 2061 2062 2063 2064 2065 2066 2067 2068 2069 2070 2071 2072 2073 2074 2075 2076 2077 2078 2079 2080 2081 2082 2083 2084 2085 2086 2087 2088 2089 2090 2091 2092 2093 2094 2095 2096 2097 2098 2099 2100

2101 2102 2103 2104 2105 2106 2107 2108 2109 2110 2111 2112 2113 2114 2115 2116 2117 2118 2119 2120 2121 2122 2123 2124 2125 2126 2127 2128 2129 2130 2131 2132 2133 2134 2135 2136 2137 2138 2139 2140 2141 2142 2143 2144 2145 2146 2147 2148 2149 2150 2151 2152 2153 2154 2155 2156 2157 2158 2159 2160 2161 2162 2163 2164 2165 2166 2167 2168 2169 2170 2171 2172 2173 2174 2175 2176 2177 2178 2179 2180 2181 2182 2183 2184 2185 2186 2187 2188 2189 2190 2191 2192 2193 2194 2195 2196 2197 2198 2199 2200

2201 2202 2203 2204 2205 2206 2207 2208 2209 2210 2211 2212 2213 2214 2215 2216 2217 2218 2219 2220 2221 2222 2223 2224 2225 2226 2227 2228 2229 2230 2231 2232 2233 2234 2235 2236 2237 2238 2239 2240 2241 2242 2243 2244 2245 2246 2247 2248 2249 2250 2251 2252 2253 2254 2255 2256 2257 2258 2259 2260 2261 2262 2263 2264 2265 2266 2267 2268 2269 2270 2271 2272 2273 2274 2275 2276 2277 2278 2279 2280 2281 2282 2283 2284 2285 2286 2287 2288 2289 2290 2291 2292 2293 2294 2295 2296 2297 2298 2299 2300

2301 2302 2303 2304 2305 2306 2307 2308 2309 2310 2311 2312 2313 2314 2315 2316 2317 2318 2319 2320 2321 2322 2323 2324 2325 2326 2327 2328 2329 2330 2331 2332 2333 2334 2335 2336 2337 2338 2339 2340 2341 2342 2343 2344 2345 2346 2347 2348 2349 2350 2351 2352 2353 2354 2355 2356 2357 2358 2359 2360 2361 2362 2363 2364 2365 2366 2367 2368 2369 2370 2371 2372 2373 2374 2375 2376 2377 2378 2379 2380 2381 2382 2383 2384 2385 2386 2387 2388 2389 2390 2391 2392 2393 2394 2395 2396 2397 2398 2399 2400

2401 2402 2403 2404 2405 2406 2407 2408 2409 2410 2411 2412 2413 2414 2415 2416 2417 2418 2419 2420 2421 2422 2423 2424 2425 2426 2427 2428 2429 2430 2431 2432 2433 2434 2435 2436 2437 2438 2439 2440 2441 2442 2443 2444 2445 2446 2447 2448 2449 2450 2451 2452 2453 2454 2455 2456 2457 2458 2459 2460 2461 2462 2463 2464 2465 2466 2467 2468 2469 2470 2471 2472 2473 2474 2475 2476 2477 2478 2479 2480 2481 2482 2483 2484 2485 2486 2487 2488 2489 2490 2491 2492 2493 2494 2495 2496 2497 2498 2499 2500

2501 2502 2503 2504 2505 2506 2507 2508 2509 2510 2511 2512 2513 2514 2515 2516 2517 2518 2519 2520 2521 2522 2523 2524 2525 2526 2527 2528 2529 2530 2531 2532 2533 2534 2535 2536 2537 2538 2539 2540 2541 2542 2543 2544 2545 2546 2547 2548 2549 2550 2551 2552 2553 2554 2555 2556 2557 2558 2559 2560 2561 2562 2563 2564 2565 2566 2567 2568 2569 2570 2571 2572 2573 2574 2575 2576 2577 2578 2579 2580 2581 2582 2583 2584 2585 2586 2587 2588 2589 2590 2591 2592 2593 2594 2595 2596 2597 2598 2599 2600

2601 2602 2603 2604 2605 2606 2607 2608 2609 2610 2611 2612 2613 2614 2615 2616 2617 2618 2619 2620 2621 2622 2623 2624 2625 2626 2627 2628 2629 2630 2631 2632 2633 2634 2635 2636 2637 2638 2639 2640 2641 2642 2643 26

