

KRAJCOVIC, S.

The depth effect of geoelectric resistance methods. p. 108. (Geologicke Prace;  
Zpravy) (No. 5, 1956)

SO: Monthly List of East European Accession (EEAL) LC, Vol. 6, no. 7, July 1957. Uncl.

28598

Z/023/61/000/004/003/003  
D006/E102

3.9410

AUTHORS: Krajcovič, Silvester, and Marquart, Patrik

TITLE: Electrotelluric station in Hurbanovo

PERIODICAL: Studia geophysica et geodaetica, no. 4, 1961, 373-375

TEXT: The electrotelluric station Hurbanovo (47.9°N - 18.2°E) was opened by the Geophysical Laboratory, Slovak AS, in 1958. As the station is located within the town proper, there are small field disturbances caused by stray currents. Their amplitude is small, however, because there are no industrial facilities in the neighborhood. No geomagnetic anomalies were observed in the vicinity of the station. The resistivity of the surface layer of the station reaches 20  $\Omega$ m, and its geological structure is that of the Minor Danube Basin. Discussing the external equipment of the station, the author states that the electrodes are located crosswise, the distance between the NS- and EW-electrodes being in both cases 100 m. They consist of 2 mm thick lead plates with a surface of 1.1 m<sup>2</sup>, are located 1.7 m below the ground

Card 1/3

Electrotelluric station in Hurbanovo

28598 Z/023/61/000/004/003/003  
D006/D102

level and coated with a 10-cm layer of marl. The station is equipped with DGrz galvanometers (producer: METRO, BLANSKO) with an internal resistance of about  $500 \Omega$ , an external critical resistance of  $2500 \Omega$ , the sensitivity on the N-S component being  $7.5 \times 10^{-9}$  A/mm/m and on the E-W component  $8 \times 10^{-9}$  A/mm/m. Every hour the electrode circuit is disconnected for 1 min by a time relay in order to provide for a time mark on the recording film, which moves at a speed of 90 mm/hour. A daily check is recorded by the constant-component compensator. The resistance of the electrode-wiring insulation is measured every week; that of the N- and E-electrodes reached 9 -  $25 \Omega$ , that of the S-electrode 18 -  $55 \Omega$ , and that of the W-electrode 9 -  $18 \Omega$ . Maximum resistance occurred during December, minimum resistance during the summer season. Evaluation of recordings, made so far, showed that the polarity of both the N- and E-electrodes is positive. The following groups of phenomena were studied: (1) Specific phenomena: ssc, si, b(bs, bp, bps); (2) Short-period oscillations pc(per, pci), pt(ptr,pti,pts), and specific oscillations with a period of more than 100 sec; (3) Storms; (4) Disturbances. Data on specific phenomena, short-period oscillations and storms

Card 2/3

28598

Z/023/61/000/004/003/003  
D006/D102

Electrotelluric station in Hurbanovo

are currently being published in the following bulletin: Data of the geophysical observatory, station of telluric currents Hurbanovo; publisher: Geophysical Laboratory, Slovak AS, Bratislava. There are 6 figures and 3 Soviet-bloc references.

H

Card 3/3

KRAJCOVIC, Silvester, dr.

Geoelectric resistance anomalies caused by a spherical body in an infinite semi-space. Geofys sbornik 9:421-439 '61.

1. Geofyzikalne laboratorium, Slovenska akademia vied, Bratislava.

PROBOWEC, Silvester

SURNAME, Given Names

Country: Czechoslovakia

Academic Degrees: [not given]

Affiliation: Geophysical Laboratory (Geofyzikalne labororium), Slovak Academy of Sciences (Slovenska akademia vied), Bratislava

Source: Bratislava, Matematicko-Fizikalny Casopis, Vol 11, No 3, 1961, pp 222-228

Data: "Geoelectric Anomalies Created by a Body with the Form of a Compressed Semiellipsoid."

GPO 981643

AUTHOR: Krajčovič, Silvester §/169/63/000/002/116/127  
D263/D307

TITLE: On the telluric anomalous field of a circular cylinder

PERIODICAL: Referativnyy zhurnal, Geofizika, no. 2, 1963, 34, abstract 2D201 (Geol. práce GUDS. SAV. Zprávy, 1962, no. 24, 237-247)

TEXT: The author studied the anomalous field of an infinite circular cylinder contained in an infinite half-space filled with a medium. Specific electric resistances of cylinder and medium are assumed to be constant and different from each other. The problem reduces to the solution of a two-dimensional Laplace equation in bipolar coordinates. Solution is obtained in the form of a series. For the obtained measurements of resistivity the author calculated theoretically curves for the potential on ground surface on a straight line perpendicular to cylinder axis, and for the potential gradient for various conductivities of cylinder and the medium. Values of the telluric parameter are tabulated. High conductivity

Card 1/2

On the telluric ...

S/169/63/000/002/116/127  
D263/D307

rocks are easier to detect by the anomalous field than low conductivity rocks. Calculation shows that similar curves should be constructed for elliptical, parabolic and hyperbolic cylinders. [Abstracter's note: Complete translation.]

Card 2/2



KURUC, F.; STREICHER, T.; KRAJCOVIC, S.

Mercurialentis. Cesk. oftal. 20 no.5:382-385 S '64.

1. Očne oddelenie v Bojniciach (veduci MUDr. F. Kuruc) a  
Zavodna poliklinika CHCWP v Novakoch (veduci MUDr. J. Hudec).

KRASCOWICZ, VLADIMIR

Organizacia krmovej zakladne. (Vyf. 1.) Bratislava, Statne podhospodarske  
nabl., 1954. 351 n. (Zivocisna vyroba, sv. 11) (Organization of the  
supply of basic feeding stuffs. 1st ed.)  
DA Not in DLC

SD: Monthly List of East European Accessions (EEAL) LC, Vol. 6, No. 12, Dec 1957. Uncl.

STEJSKAL, Jan; PLESNIK, Jan; HRUSKA, Ladislav; SVOBODA, Jaroslav; NAJMR, Stanislav; PREININGER, Miroslav; HAUNER, Frantisek; BENDA, Josef, inz.; ~~KRAJCOVIC, Vladimir~~; VLCEK, Kvetoslav; KRBLICH, Jan; CERNY, Ladislav, Dr.; DVORACEK, Miroslav, inz. dr.; CHYTRA, Frantisek, inz.; FOLTYN, Jiri; VYSKOT, Miroslav; STAMBERA, Jaroslav, C.Sc. Doc.Inz.; KOSIL, Vladimir; STUHLIK, Jaroslav, Inz.; NAKLADAL, Jaroslav, Inz.; RICHTER, Lev, MVDr.

Statements of directors of institutes, and of managers of workplaces of the Czechoslovak Academy of Agricultural Sciences. Vestnik CSAZV 8 no.8/9:496-531 '61.

1. Dopisujici clen Ceskoslovenske akademie zemedelskych ved (for Stejskal, Plesnik, Hruska, Svoboda, Najmr, Preininger, Hauner, Benda, Krajcovic, Krblich, Dvoracek, Foltyn, Vyskot, Kosil) 2. Clen redakcni rady Vestniku Ceskoslovenske akademie zemedelskych ved (for Plesnik, Preininger, Foltyn, Vyskot) 3. Reditel Vyzkumneho ustavu zivocisne vyroby Ceskoslovenske akademie zemedelskych ved v Uhrinevsi (for Dvoracek) 4. Reditel Ustavu pro vedeckou soustavu hospodareni Ceskoslovenske akademie zemedelskych ved v Praze (for Benda)

(Czechoslovakia--Agriculture)

KRAJCSOVICS, P.

"Role of Sanitary Actives in the Protection of Agricultural Labor." p. 38,  
(NEPEGESZSEGUGY, Vol. 35, no. 2, Feb. 1954, Budapest, Hungary)

SO: Monthly List of East European Accessions, LC, Vol. 3, No. 5, May 1954/Unclassified

KR/JC SOVICS, Pal, dr., megyei főorvos.

Health protection of agricultural workers. Nepegeszseguy 37 no.6:  
151-157 June 56

(MEDICINE, PREVENTIVE

in Hungary, health protection of agricultural workers (Hun))

(AGRICULTURE

health protection of agricultural workers in  
Hungary (Hun))

*KRAJCSOVICS, PAL.*  
MAGYAR, Karoly, dr.; KRAJCSOVICS, Pal, dr.

Organization and significance of mobile specialist service in Szarvas county. ~~Nepegeszseguy~~ 38 no.3:55-57 Mar 57.

(RURAL CONDITIONS

mobile specialist serv. in rural areas in Hungary, organiz. & significance in a county (Hun))

(SPECIALISM

same)

HUNGARIAN

KRAJCSOVICS, Pal, Jr. Dr; LABODA, Irma, Dr; Jaras Hospital of Paszto,  
Cardiologic Department (Pasztoi Jarasi Korhaz, Belosztaly)

"Repeated Myocardial Infarct at Age 30."

Magyar, Orvosi Hetilap, Vol 104, No 1, 6 Jan 63, pages 24-25.

[English: Authors' summary] The authors report on two myocardial  
infarct attacks of a 30 year old male patient. They call attention to  
the great increase of infarcts among young adults. They stress that in  
cases of combined complaints of a directive and stenocardiac nature,  
myocardial infarct has to be considered in spite of indefinite laborator  
findings in the beginning.

[11 Western, 4 Hungarian references]

L  
1/1

KRAJCSOVICS, Pal, dr.

~~APPROVED FOR RELEASE: 06/19/2000~~

CIA-RDP86-00513R000826010018

Congenital familial methemoglobinemia. Orv. hetil. 105 no.8:  
369-370 23 F'64.

1. Jarasi Korhaz Paszto, Belgyogyaszat.

\*

HUNGARY

KRAJCSOVICS, Pal, Dr, NIKODEMUSZ, Istvan, Dr, SZUCHOVSKY, Sandor, Dr;  
Public Health Epidemiological Station of Nograd Megye and National Institute  
for Food and Nutritional Science (Nogradmegyei Kozegeszsegugyi Jarvanyugyi  
Allomas es Orszagos Elelmezes- es Taplalkozastudomanyi Intezet).

"Results on the Investigation of a Case of Mass Food Poisoning by Salmonella  
Bareilly."

Budapest, Orvosi Hetilap, Vol 104, No 32, 11 Aug 1963, pages 1497-1500.

Abstract: [Authors' Hungarian summary modified] Food poisoning caused by  
Salmonella bareilly was spread by products of a pastry shop causing 51 a-  
cute and several latent cases of infection. Incubation time was 4-27 hours  
and the disease lasted 4-14 days. Six patients needed hospitalization, but  
no fatality occurred, Salmonella was cultured from pastry samples and from  
the feces of those who consumed the food. The number of positive tests de-  
creased gradually but were present among former patients as much as 200  
days later. The clinical symptoms responded well to treatment while the  
bacterium excretion did not. The mass food poisoning has turned into an  
epidemic but the host could not be found. Attention is called to the role  
of food in the spreading of Salmonella infections, which are only slightly  
pathogenic for humans. 14 Western, 6 Hungarian references.

1/1



KRAJCSOVICS, Pal, dr.; KOVATS, Sara, dr.; HARRER, Magda, dr.

On possibilities of prevention of well water methemoglobinemia  
in infancy. Role of ascorbic acid in prevention. Gyermekgyógyászat  
15 no.3:85-89 Mr'64

1. Jarasi Korház, Pásztó ; igazgató: Csendes Oszkar, dr.

\*

BRADY, Nelson

Minor problems of the Suez Canal  
Magy report 8 no.43 15 F 164.

KRAJCZER, Istvan

Luxurious dining, sleeping and buffet cars -- a new kind of hospital  
Magy vasut 7 no.1:1 1 Ja '63.

KRAJCZOK, HENRYK

Krajczok, Henryk Katalog wyrobów z węglików spiekanych (tymczasowy). Katowice, Państwowe Wydawn. Techniczne, 1951. 68 p. (Catalog of scorched carbon products. Illus., tables)

SO: Monthly list of East European Accessions, LC, Vol. 3, No. 1, Jan. 1954, Uncl.

KRAJCZOK, HENRYK

Katalog resorow i sprzyn. (Wyd. 1) Stalinozrod, Wydawn. Gorniczo-Hutnicze, 1956.

P. 71 (Catalog of leaf springs and springs. 1st ed. illus., diags., graphs, tables)

SO: Monthly Index of East European Accessions (AEEI) Vol. 6, No. 11, November 1957

KRAJECKI, Z.

Planning and intrafactory settlement of accounts in the Swarzedz  
Furniture Plants. p. 158 Vol. 6, no. 6, June 1955

PRZEMYSŁ DRZEWNY

Warszawa

SOURCE: East European Accessions List (EEAL) IC. Vol. 5, no. 3, Mar. 1956

KRAJČIĆ, E.

UNIV. OF ZAGREB 30,003

THE BENZIDINE NUMBER AS A NEW CHEMICAL CONSTANT FOR OXYCELLULOSE

Arkiv. kem. 19, 101-4 (in English, 104)1947)

CA 42,20,7980(CA 42,1890)

CHEM. CELL CHEM. DERIV

258

KRAJEIOVA, Viera; CIZNAR, Ivan; KREMERY, Vladimir

Chromatographic determination of fatty acids in endotoxins and in whole cells of *Salmonella cholerae suis*. *Biologia* 17 no.2:148-152 '62.

1. Katedra biochemie Lekarskej fakulty Univerzity Komenskeho, Ustav epidemiologie a mikrobiologie a Statny veterinarny ustav, pobočka v Bratislave.

(SALMONELLA chem) (FATTY ACIDS chem)  
(CHROMATOGRAPHY) (TOXINS AND ANTITOXINS)



KRAJENSKI, Henryk, inż.

Instrument training vessel of the State Maritime School in Gdynia. Tech gosp morska 12 no.12:363-364 D '62.

1. Biuro Konstrukcyjne Taboru Morskiego, Gdansk.

RABAR, Ferenc (Budapest); KRAJESOVITS, Marton (Budapest)

The problem of production planning with the application of computer methods in enterprises of serial production. Przegl techn no.35:11,12 2 S '62.

KHAJEWSKI, F.;KRAJEWSKA, A.

Relation of Biernacki's reaction to quantity and form of sodium citrate.  
Polski tygod. lek. 7 no.22:708-716 2 June 1952. (GLML 23:2)

1. Of the Laboratory of the Institute of Industrial Medicine.

*Krajewska, A.*

**KRAJEWSKI, F.; KRAJEWSKA, A.**

Sedimentation of erythrocyte clumps in plasma and sedimentation rate determination after twenty four hours for determination of plasma and erythrocyte volume percentage. Polski tygod. lek. 7 no. 43: 1374-1382  
27 Oct 1952. (OLML 24:1)

1. Of the Laboratory of the Institute of Industrial Therapy.

KRAJEWSKI, F.;KRAJEWSKA, A.

Effect of impurities in sodium citrate on Biernacki's reaction. Polski tygod. lek. 8 no.15:556-561 13 Apr 1953. (GLML 24:5)

1. Of the Institute of Physiology of Bialystok Medical Academy and of the Laboratory of Health Department of D. R.N. (Head--Docent Franciszek Krajewski, M.D.), Warsaw.

FRASCHKA, A.

FRASCHKA, A. Curing low-elastic foam concrete. p. 371. Vol. 27, no. 10,  
Oct. 1955. ENZYKLOPEDIA BUDOWLANY. Warszawa, Poland.

SOURCE: East European Accessions List (EAL) L? Vol. 5, no. 6 June 1956

Krajewska, A.

KRAJEWSKI, F.; KRAJEWSKA, A.

Effect of technique of blood-collecting on reaction of Biernacki.  
Polski tygod. lek. 7 no. 17:506-512 28 Apr 1952. (CLML 22:4)

1. Of the Laboratory of the Institute of Industrial Medicine.

KRAJEWSKA, A.

KRAJEWSKI, F.; KRAJEWSKA, A.

Effect of storage of noncoagulating blood in Biernacki's reaction.  
Polski tygod. lek. 7 no. 20:643-646 19 May 1952. (CLML 22:5)

1. Of the Laboratory of the Institute of Industrial Medicine.



Country : Poland H-13  
 Category :  
 Res. Jour. : 46627  
 Author : Krajewska, A.  
 Institut. :  
 Title : Plasticized and Water-Resistant Portland Cement  
 Orig. Pub. : Cement. Wapno. Gips, 1958, 14, No 11, 241-244

Abstract : Study of the properties of plasticized (PC) and of water-resistant (WRC) cement produced from factory clinker. PC contained 0.15% sulfite-alcohol vlnasse, and WRC 0.15% oleic acid. The additives were incorporated in the mill during grinding of clinker and contributed to a finer grinding of cement without reducing mill output. Both additives have practically no effect on setting time of the cement. Strength of PC was found to be somewhat higher than that of ordinary cement in compression tests, and equal to it in bending tests. In compression strength the WRC does not differ from the ordinary, but is inferior to the latter in

Card: 1/3

Country : Poland H-13  
 Category :  
 Res. Jour. : 46627  
 Author :  
 Institut. :  
 Title :  
 Orig. Pub. :

Abstract : bending tests on the 7th and 28th day of aging. As concerns volume deformation both cements behaved practically the same as ordinary portland cement. Concrete mixes of PC were of enhanced plasticity (fluidity) which made it possible to decrease the amount of mixing water by 3%, and also to decrease by 3% cement expenditure per 1 m<sup>3</sup> of concrete. Strength of PC- and WRC-based concrete was as a rule higher than that of ordinary concrete. The same results were observed on steaming, and increase in strength on the 28th day was greater than on normal aging. WRC showed poorer ad-

herence to reinforcement, in concrete (a decrease by 6-40%). Adherence to reinforcement was also found to somewhat poorer

JAROSZYNSKA-WEINBERGER, Barbara; KRAJEWSKA, Barbara; KROTOCHWIL-  
SKRZYPKOWA, Maria

Virumin in the prevention of smallpox and in the treatment of  
infectious mononucleosis. *Pediat. pol.* 38 no.10:911-914 0 '63.

1. Z Kliniki Chorob Zakaznych Wieku Dzieciecego AM w Warszawie  
Kierownik: prof. dr med. J. Bogdanowicz.  
(GUANIDINES) (ANTIVIRAL AGENTS)  
(INFECTIOUS MONONUCLEOSIS) (SMALLPOX)

KRAJEWSKA, Barbara

Herpes zoster and smallpox. Przegl. epidem. 15 no.4:432-424 '61.

1. Z Kliniki Chorob Zakaznych Wieku Dzieciecego AM w Warszawie Kierownik  
Kliniki: prof. dr J. Bogdanowicz.

(CHICKENPOX compl) (HERPES ZOSTER in inf & child)

BOGDANOWICZ, Jan; KRAJEWSKA, Barbara

Corticotherapy in acute infectious diseases of childhood. *Pediat*  
pol 36 no.10:1061-1066 0 '61.

1. Z Kliniki Chorob Zakaznych Wieku Dzieciecego AM w Warszawie  
Kierownik: prof. dr med. J. Bogdanowicz.  
(ADRENAL CORTEX HORMONES ther) (COMMUNICABLE DISEASES ther)

KRAJEWSKA, Barbara

Chickenpox and adrenocortical therapy. *Pediat pol* 36 no.10:1067-1071  
0 '61.

1. Z Kliniki Chorob Zakaznych Wisku Dzieciecego AM w Warszawie  
Kierownik: prof. dr med. J. Bogdanowicz.  
(ADRENAL CORTEX HORMONES ther) (CHICKENPOX ther)

BOGDANOWICZ, Jan; KRAJEWSKA, Barbara; SZCZEPANSKA, Halina

Measles and whooping cough. *Pediat. pol.* 38 no.4:395-397 '63.

1. Z Kliniki Chorob Zakaznych Wieku Dzieciecego AM w Warszawie  
Kierownik: prof. dr med. J. Bogdanowicz.  
(MEASLES) (WHOOPIING COUGH)

KRAJEWSKA, Estera

The influence of soil moisture on barley yield in general and as to its mineral components. Rocznik nauki rolno-lesnej 1961, no. 3: 837-842 '61.

1. Zakład Fizjologii Roslin, Polska Akademia Nauk.

POLAND

KRAJEWSKA, J., of the Epidemiology Laboratory, Warsaw City Sanitary-Epidemiologic Station (Oddzial Laboratoryjny Dzialu Epidemiologii Miejskiej Stacji Sanitarno-Epidemiologicznej), Warsaw. Dr. W. Olasek, Head.

"More Than One Bacteriophage Type of Salmonella Typhi in Patients and Carriers of Typhoid Bacilli"

Warsaw, Przegląd Epidemiologiczny, Vol 20, No 3, 1966, pp 271-277.

Abstract (Author's English summary modified): Results of bacteriophage typing of S. typhi strains isolated from 6 persons in whom several bacteriophage types are reported. The importance of repeated typing over many years of strains from the same person and of typing greater numbers of colonies from cultures giving a few degraded reactions is pointed out. The finding of carriers of several bacteriophage types of S. typhi over many years suggests the possibility of epidemic foci of mixed bacteriophage types excreted by a single person. Contains a summary in English, 10 Tables and 4 references (1 Polish and 3 Western).

1/1

L 04506-67 JK

ACC NR: AP6033063 (4) SOURCE CODE: PO/0081/66/020/003/0271/0277  
APPROVED FOR RELEASE: 06/19/2000 CIA-RDP86-00513R000826010018

AUTHOR: Krajewska, Janina

ORG: Laboratory Section, Department of Epidemiology Municipal Station for Sanitation and Epidemiology/directed by doctor W. Olasek, Warsaw (Oddzial Laboratoryjny Dzialu Epidemiologii Miejskiej Stacji Sanitarno-Epidemiologicznej)

TITLE: Bacteriophage types of Salmonella typhi in typhoid patients and typhoid carriers

SOURCE: Przegląd epidemiologiczny, v. 20, no. 3, 1966, 271-277

TOPIC TAGS: bacteriophage, bacteria, bacterial disease, bacteria carrier, typhoid, epidemiology, Salmonella typhi

ABSTRACT: Bacteriophage typing of S. typhi strains, isolated from six persons in whom several bacteriophage types were observed was performed. Repeated typing of strains from the same person is emphasized. The finding of several bacteriophage types of S. typhi in carriers over many years suggests the possibility of epidemic foci of mixed bacteriophage types excreted by a single person. It was suggested that

Card 1/2



L 04506-67

ACC NR: AP6033063

the number of trains of colonies selected for typing in patients should be increased.  
Orig. art. has: 10 tables. [Based on author's abstract] [W.A. So]

SUB CODE: 06/ SUBM DATE: none/ ORIG REF: 001/ OTH REF: 003/

Card 2/2

mjs

KRAJEWSKA, J

Kassubia will never perish! p. 5. TURYSTA. (Polskie Towarzystwo  
Turystyczno-Krajoznawcze) Warszawa. No. 6, June 1956

SOURCE: East European Accessions List (EEAL) Library of Congress  
Vol. 5, No. 11, August 1956.

L 01788-67 T JK

ACC NR: AP6035152-

(A) SOURCE CODE: PO/0081/65/019/002/0199/0200

KRAJEWSKA, Maria; WALTER, Tadeusz and SIMBIEROWICZ, Zygmunt; Regional Sanitation and Epidemiology Station (Wojewodzka Stacja Sanitarno-Epidemiologiczna), Poznan and District Sanitation and Epidemiology Station (Powiatowa Stacja Sanitarno-Epidemiologiczna), Jarocin. 20 16

"Epidemic of Infectious Hepatitis in Children in Rural Areas."

Warsaw, Przegląd Epidemiologiczny, Vol 19, No 2, 1965; p 199-200.

Abstract: Analysis of two foci of epidemic hepatitis in the Poznan wojewodztwo in 1963. In the first, 49 children aged 3 to 14 were involved, no adults or small children; In the second, 102 children and 95 adults were affected. The role of central grammar school is discussed in detail, stressing unexpected epidemiologic patterns. Gamma globulin administration was rapidly followed by subsidence of the outbreak. Presented at the 3rd Scientific Assembly of Polish Epidemiologists and Infectologists, Krakow, 5-6 Oct 64. [JPRS]

TOPIC TAGS: hepatitis, epidemiology, pediatrics, gamma globulin, disease therapeutics

SUB CODE: 06 / SUPM DATE: none

Card 1/1 *pkh*

0921 1542

EAST GERMANY/CZECHOSLOVAKIA

KRALOVA, M., and JANOUSEK, J., of the Institute for Experimental Botany at the Czechoslovak Academy of Sciences [original-language version not given]; and MOUCHOVA, H., of the Central Research Institute for Plant Production at the Ministry of Agriculture [original-language version not given]; both in Prague, Czechoslovakia.

"Observation of Nitrogen Metabolism in Plants with the Aid of N-15"

Berlin, Isotopenpraxis, Vol 2, No 11, Nov 1966, pp 435-436

Abstract: The effects of various doses of nitrogen fertilizer, used in the form of  $KNO_3$ , on the amount of nitrogen taken up by Vicia faba were investigated in vivo using  $N^{15}$ -labeled compound. It was found that in all instances the amount of nitrogen taken up from the atmosphere decreases with increasing dosages of  $KNO_3$  fertilizer. 2 references, including 1 Russian and 1 Western. (Manuscript received 12 Mar 1966).

1/1

~~APPROVED FOR RELEASE: 06/19/2000~~ ~~CIA-RDP86-00513R000826010018~~

A focus of dysentery in an institution for adolescents simulating acute food poisoning. Przegl.epidem. 14 no.3:301-304 '60.

1. Z Wojewodzkiej Stacji Sanitarno-Epidemiologicznej w Poznaniu  
Dyrektor: dr St.Grzymala. Kierownik Dzialu Epidemiologii: dr  
K.Neyman i z Powiatowej Stacji Sanitarno-Epidemiologicznej w Chodzieży  
Dyrektor: lek. med. B.Nowakowski.  
(DYSENTERY BACILLARY diag)  
(FOOD FOISONING diag)

JESMAN, Wladyslaw Andrzej; KRAJEWSKA, Maria; PARADYSTAL, Tadeusz

Analysis of surgical results in the treatment of hallux valgus.  
Chir narzad. ruchu ortop. pol. 27 no.4:535-543 '62.

1. Z Oddzialu Ortopedyczno-Urazowego Szpitala Miejskiego Nr 8 w  
Warszawie Kierownik: prof. dr Z. Ambros.  
(HALLUX)

KRAJEWSKA-PININSKA, Joanna

Statistical analysis of the main hydrogeological parameters of the southern part of the marginal syncline. Przegl geol ll no.1:35-38 Ja '63.

1. Akademia Gorniczo-Hutnicza, Krakow.

P.T.A.

*Mechanical & Electrical Engineering*  
6

319

629 13 014

Krajewski B., Eng. The Method of Calculation of the Retardation Characteristics of the Profile Cascade for Small Angles of Incidence. "Metoda obliczania charakterystyki opóźniającej palisady profiliów dla małych kątów natarcia". Technika Lotnicza. No 2, 1950, pp. 53-59, 15 figs.

Description of methods used for the calculation of the profile cascade. Weinel's method and the assumptions which make possible

the calculation of the retarding cascade. Comparison of the theory with measurements. Conclusions. The method given by the author is based on his own assumptions and leads to better results than those obtained by similar methods.





KRAJEWSKI, B.

Chemical Abstr.  
Vol. 48  
Apr. 10, 1954  
Organic Chemistry

**Preparation of 1-methoxypropene-2-yl Chloride and  
of 1-methoxypropene-2-yl Chloride**  
A new method of *trans*-1-methoxypropene (I) from  
1-methoxypropene (II) in the presence of Cu as a catalyst is described.  
1-methoxypropene (I) is also prepared from 1-methoxypropene (II) in the presence of Cu as a catalyst in the presence of  $H_2SO_4$ .  
1-methoxypropene (I) is also prepared from 1-methoxypropene (II) with  $H_2SO_4$  and  $SnCl_4$  as a catalyst (87.5-91% based on I and 87.5-81% on II). Detailed data are given pertaining to a periodic and a continuous method of *trans*-1-methoxypropene (I) with  $H_2SO_4$ . 11 references. Edward A. Ashworth

Krajewski, B

1. Krajewski, B. *Chronologia i charakterystyka sił zbrojnych Związku Radzieckiego w latach 1945-1954*. Warszawa: Wydawnictwo Ministerstwa Obrony Narodowej, 1954.

2. *Ukaz o powołaniu do służby w Wojsku Polskim*. Warszawa: Wydawnictwo Ministerstwa Obrony Narodowej, 1954.

*(Handwritten initials)*

KRAJEWSKI, B.

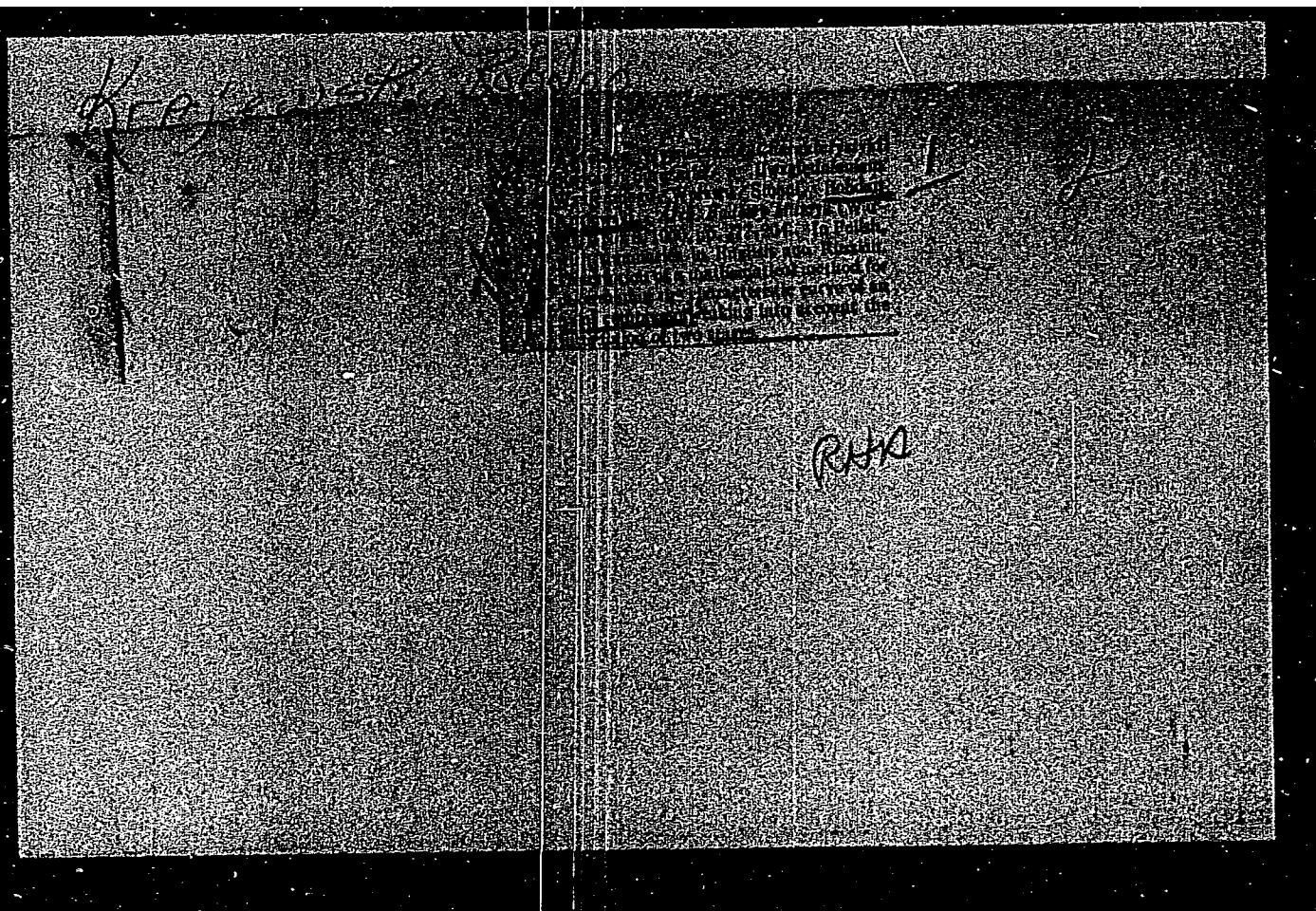
Remarks on the rescue and transport of damaged aircraft. p.21. (TECHNIKA LOTNICZA, Warszawa, Vol. 9, No. 1, Jan./Feb. 1954)

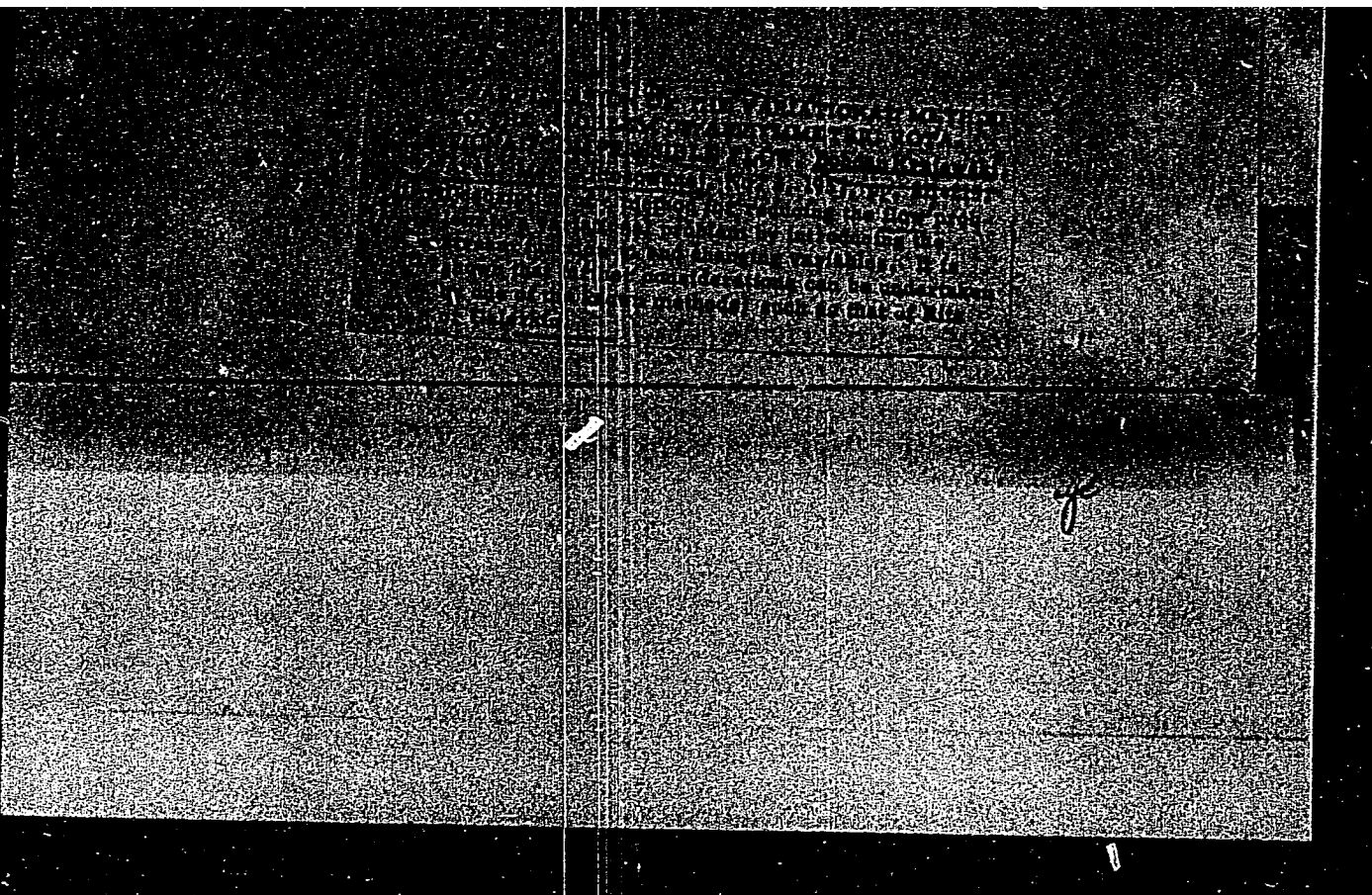
SO: Monthly List of East European Accessions, (EEAL), LC, Vol. 4, No. 6, June 1955, Uncl.

KRAJEWSKI, B.; NIEBOJEWSKA, H.

Synthesis of vinyl acetylene. p. 350. (PRZEMYSŁ CHEMICZNY, Vol. 10, No. 7, July 1954, Warszawa, Poland)

SO: Monthly List of East European Accessions, (EEAL), LC, Vol. 3, No. 12, Dec. 1954, Uncl.





KRAJEWSKI, B.

Arch. History Museum  
4(1), 73-88  
1957

Arch. History Museum  
4(1), 73-88  
1957

Uniform Stages  
B. Krajewski  
A method proposed by E. Salemann, with the assumption that stages have identical characteristic curves has previously been generally used for computing multistage compressors. The assumption is not compatible with modern design practice. By generalizing Salemann's method, this assumption is avoided and the problem reduced to a differential equation of first order, which is solved by the use of the Runge-Kutta method. Bibliography.

AC



KRAJEWSKI, D.

Distr. 4328

Krajewski, Bohdan. Application of the variational method to the problem of axisymmetric rotational compressible flow. Arch. Mech. Stos. 9 (1957), 211-215. (Polish and Russian summaries)

The author outlines a method for determining the steady axial symmetric flow of a compressible inviscid fluid with no body forces. The method consists of introducing the stream function as a function of the radial distance and using the calculus of variations. Because of lack of clarity in specifying the independent variables, the reviewer was unable to follow the argument.

N. Coburn (Ann Arbor)

2  
I-FW  
/

SKH



S/285/63/000/001/001/002  
A052/A126

AUTHORS: Gołos, Stefan, Krajewski, Bohdan

TITLE: Calculation of axial velocity distribution in the rim clearance  
with an allowance for the channel form

PERIODICAL: Referativnyy zhurnal, otdel'nyy vypusk, 49. Turbostroyeniye, no.1,  
1963, 12, abstract 1.49.78 (Prace Inst. lotn., no. 13, 1961, 3 - 18,  
Polish; summaries in Russian, French, English, German)

TEXT: A stationary flow of compressible non-viscous liquid is considered  
in an axially symmetric system of coordinates at partially given parameters; the  
parameters necessary for a complete description of the flow geometry are sought  
for. The iteration method usually applied is laborious and inaccurate. By using  
curvilinear coordinates it was possible to reduce the flow equation to the solu-  
tion of a system of two linear equations with two unknowns. The calculation is  
simplified by introducing dimensionless values and by using tables.

[Abstracter's note: Complete translation]

Card 1/1

P/046/62/007/010/001/002  
D256/D308

262223

AUTHOR: Krajewski, Bohdan

TITLE: Approximate calculation of velocity and temperature fields of a gas flowing through a spherical element pebble bed

PERIODICAL: Nukleonika, v. 7, no. 10, 1962, 611-622

TEXT: Velocity and temperature distributions of a gas flowing through an assembly of packed beds are considered, neglecting the thermal conductivity of the gas and assuming the total pressure to be constant within the region considered. The calculation is carried out for spherical fuel elements enclosed in graphite shells, showing that the problem can be reduced to partial differential equations with a given set of boundary conditions. An approximate solution is obtained by solving the corresponding variational problem by Ritz's method. Temperature of the system and the temperature distributions inside the fuel elements may be derived from the presented equations for any given temperature of the coolant. There

1/B

Card 1/2

Approximate calculation ...

P/046/62/007/010/001/002  
D256/D308

are 2 figures.

ASSOCIATION: Instytut Badań Jądrowych PAM, Zakład Inżynierii  
Reaktorowej, Warsaw (Institute of Nuclear Research  
PIB, Department of Reactor Engineering, Warsaw)

SUBMITTED: June, 1962

✓B

Card 2/2

L 18658-63 EPR/EPF(c)/EWT(1)/EPF(n)-2/EWT(m)/BDS AFFTC/ASD/ESD-3/  
AFWL/SSD Ps-4/Pr-4/Pu-4 WW  
ACCESSION NR: AP3006248 P/0046/63/008/004/0249/0257

AUTHOR: Krajewski, Bohdan; Szczurek, Jan 77

TITLE: Approximate determination of the flow and the temperature field in a  
pebble-bed gas-cooled reactor 19 21

SOURCE: Nukleonika, v. 8, no. 4, 1963, 249-257

TOPIC TAGS: gas-cooled reactor, gas thermal conductivity, Ritz method, pebble  
bed, variational problem, numerical solution

ABSTRACT: A numerical example is presented of a method for determining the flow  
and the temperature field in a gas flowing through packed beds. The thermal  
conductivity of the gas is neglected, and the total pressure is assumed to be  
constant. The differential equation considered corresponds to a variational  
problem, and Ritz's method is used to obtain a numerical solution. The method  
describes the flow and the temperature distribution in the gas more completely  
and gives more accurate results than other existing methods. Orig. art. has:  
4 figures.

ASSOCIATION: Instytut Bodan Jądrowych, Warsaw--Swierk (Nuclear Research Institute)  
SUBMITTED: 00 DATE ACQ: 23Sep63 ENCL: 00  
SUB CODE: NS, PH NO REF SOV: 000 OTHER: 004  
Card 1/1

KRAJEWSKI, Bohdan

Variational problems of the theory of three-dimensional flow  
through thermal turbomachinery. Archiw mech 15 no.6:743-766  
1963.

L. Warsaw Technical University.

P/0033/63/015/006/0743/0766

ACCESSION NR: AP4019644

AUTHOR: Krajewski, Bohdan (Warsaw)

TITLE: Variational problems of the theory of three-dimensional flow through thermal turbine machinery

SOURCE: Archiwum mechaniki stosowanej, v. 15, no. 6, 1963, 743-766

TOPIC TAGS: gas dynamics, three-dimensional flow, vortex flow, fluid flow, stream function, boundary-value problem, flow intensity function, boundary value, flow intensity, streamline, laminar flow, elementary layer, boundary layer, boundary-layer flow, boundary condition, streamline flow

ABSTRACT: The present work was done, because of the inadequacy of published theoretical results of research on flow through thermal turbine machinery, in an attempt to obtain solutions of certain boundary problems to which the equations for such flow may be reduced. Stream functions, which permit solving boundary-value problems of vortex flow, are used. The flow problem is reduced to a variational problem, which in turn permits applying direct methods and obtaining approximate solutions, that is, obtaining directly, by means of known

Card 1/2

ACCESSION NR: AP4019644

functions, a solution of the set of equations describing a three-dimensional stationary vortex flow of a perfect gas with no dissipation of energy. This is a more general approach to such solutions. Orig. art. has: 138 formulas and 5 figures.

ASSOCIATION: Warsaw Technical University

SUBMITTED: 07Feb63

DATE ACQ: 27Mar64

ENCL: 00

SUB CODE: AI

NO REF SOV: 001

OTHER: 004

Card 2/2

KRAJEWSKI, B.

A variational approach to the three-dimensional theory of convective heat transfer. *Archiv mech* 16 no.3:633-636 '64.

1. Institute of Nuclear Research of the Polish Academy of Sciences, Warsaw.



FRANCOPI, R.

FRANCOPI, R. Technical : Journal of Research ...

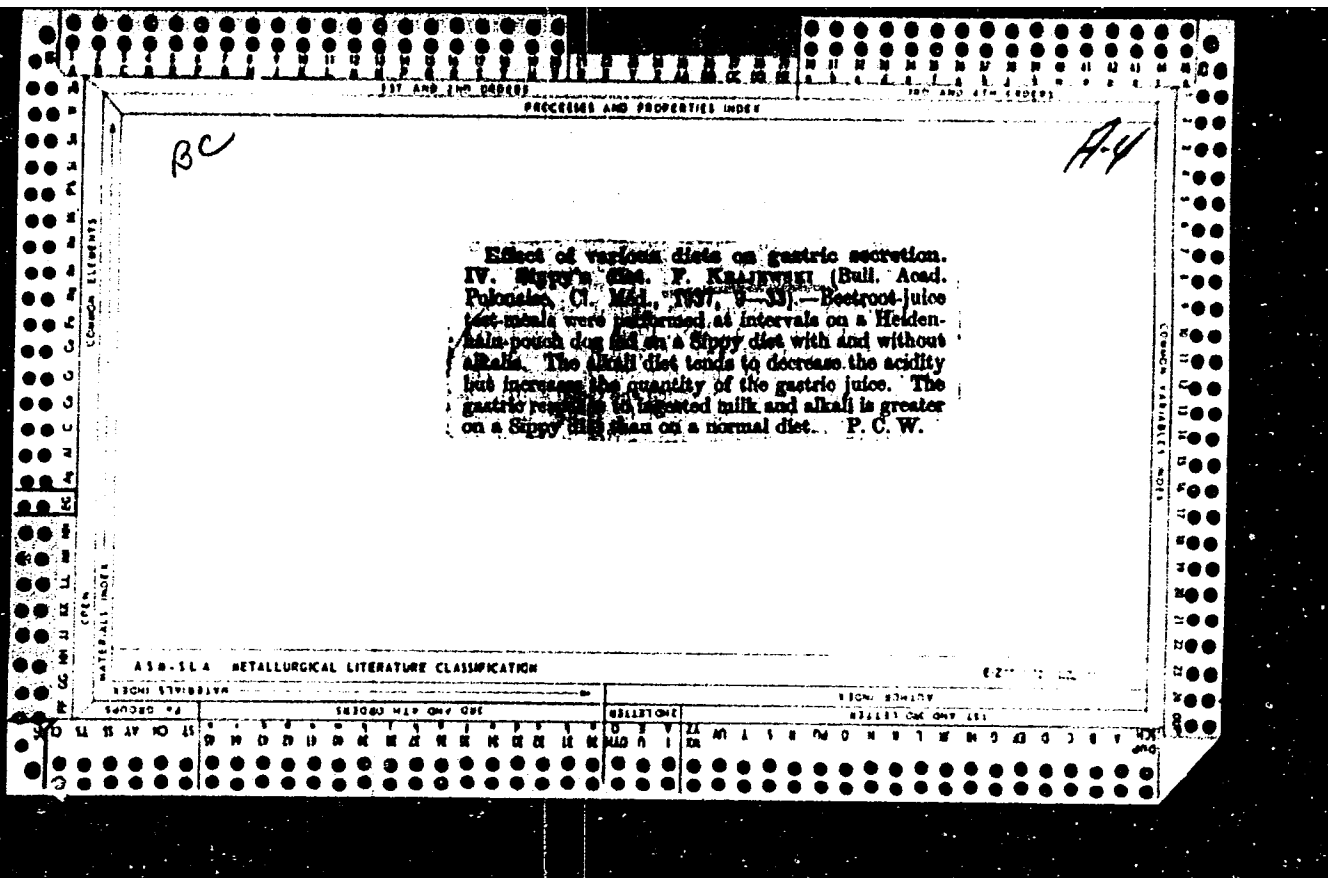
Vol. 11, No. 45, Nov. 1955.

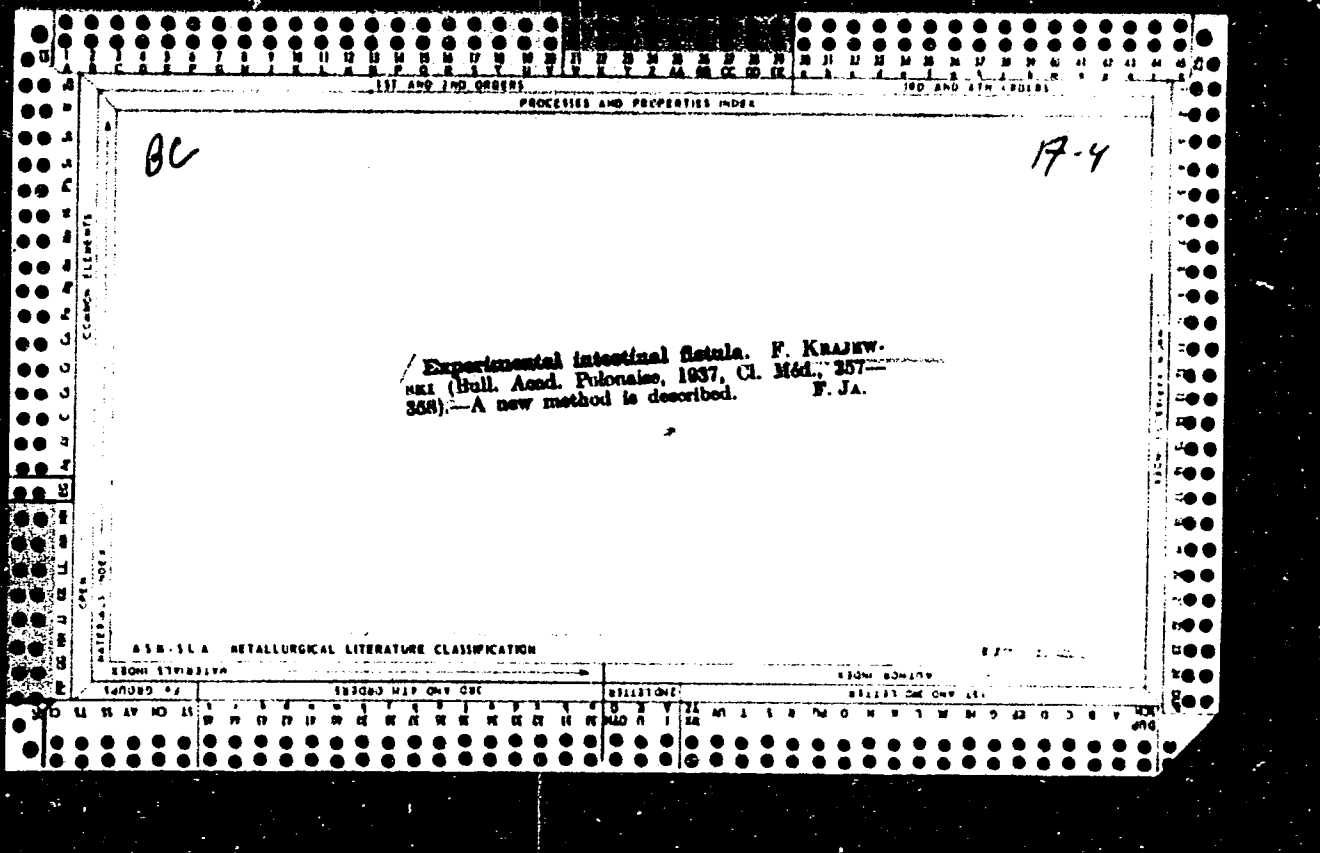
STROJNICTWA I ELEKTROTECHNIKA

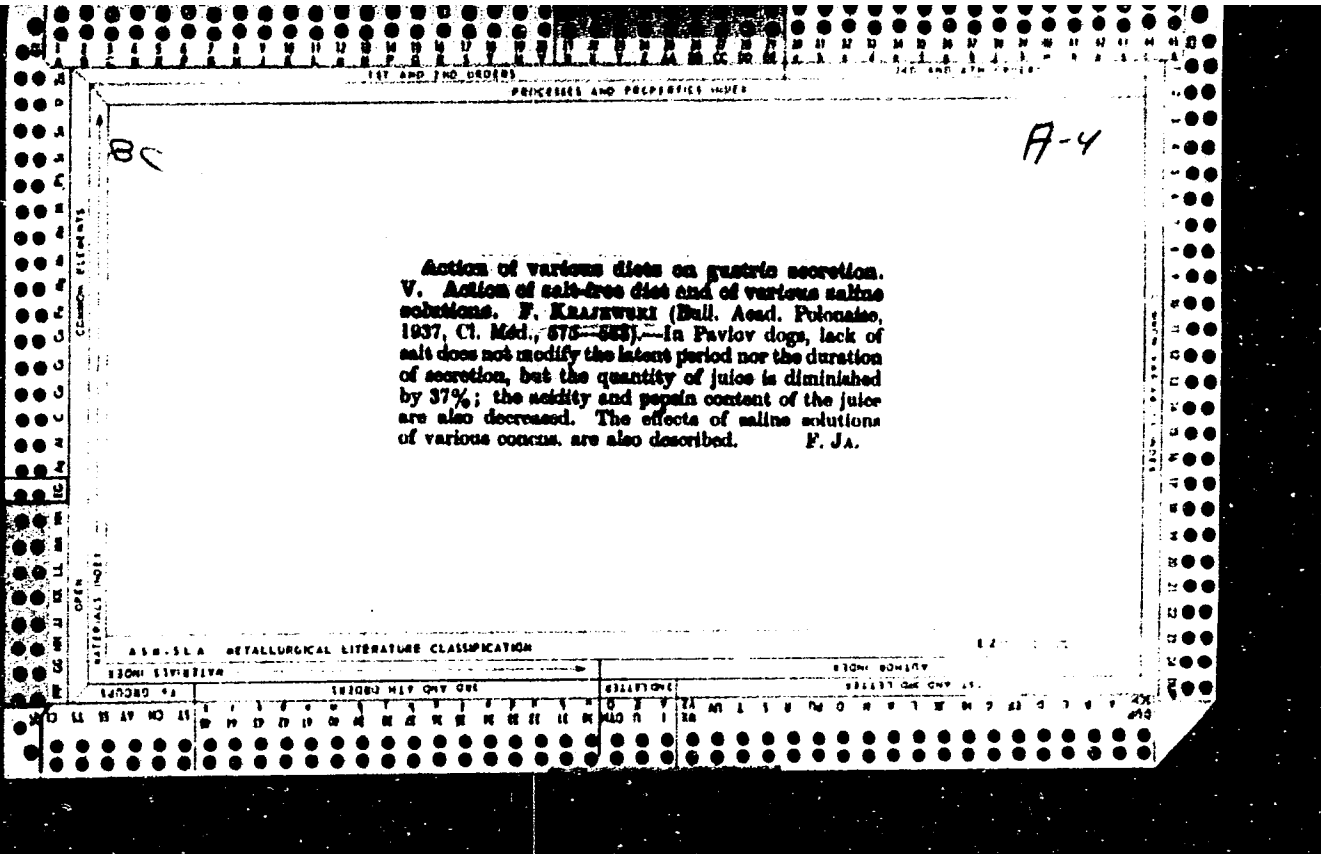
TECHNOLOGY

Warszawa, Poland

Sci. Inst. Foreign Accession, Vol. 5, No. 5, May 1956







KRAJEWSKI, F.

Modifications in blood gases following frequent exposures to low barometric pressure with equalized and non-equalized partial compression of oxygen. Polski tygod.lek. 5 no.27-28:1049-1054 10 July 50.  
(CJML 20:5)

1. Of the Physiological Laboratory of the Institute of Aviation Medicine (Head--Franciszek Krajewski,M.D.).

KRAJEWSKI, F.;KRAJEWSKA, A.

Effect of technique of blood-collecting on reaction of Biernacki.  
Polski tygod. lek. 7 no. 17:506-512 28 Apr 1952. (CLML 22:4)

1. Of the Laboratory of the Institute of Industrial Medicine.

KRAJEWSKI, F.; KRAJEWSKA, A.

Effect of storage of noncoagulating blood in Biernacki's reaction.  
Polski tygod. lek. 7 no. 20:643-646 19 May 1952. (GLML 22:5)

1. Of the Laboratory of the Institute of Industrial Medicine.

KRAJEWSKI, F.; KHAJEWSKA, A.

Relation of Biernacki's reaction to quantity and form of sodium citrate.  
Polski tygod. lek. 7 no.22:708-716 2 June 1952. (CLML 23:2)

1. Of the Laboratory of the Institute of Industrial Medicine.



KRAJEWSKI, P.; KRAJEWSKA, A.

Sedimentation of erythrocyte clumps in plasma and sedimentation rate determination after twenty four hours for determination of plasma and erythrocyte volume percentage. Polski tygod. lek. 7 no. 43: 1374-1382  
27 Oct 1952. (OLML 24:1)

1. Of the Laboratory of the Institute of Industrial Therapy.

KRAJEWSKI, F.;KRAJEWSKA, A.

Effect of impurities in sodium citrate on Biernacki's reaction. Polski tygod. lek. 8 no.15:556-561 13 Apr 1953. (CIML 24:5)

1. Of the Institute of Physiology of Bialystok Medical Academy and of the Laboratory of Health Department of D. R.N. (Head--Docent Franciszek Krajewski, M.D.), Warsaw.

**KRAJEWSKI, Franciszek** (Warszawa 36., ul. Okresna 36)

Biernacki's reaction as a test of changes in the blood following irradiation with massive doses of roentgen rays. Polski tygod. lek. 9 no.35:1091-1099 30 Aug 54.

1. Z pracowni własnej.

(ROENTGEN RAYS, effects,  
on blood sedimentation)

(BLOOD SEDIMENTATION, effect of radiations on,  
x-ray)

KRAJEWSKI, Franciszek (Warszawa, ul. Okrezna 36)

Effect of small doses of roentgen rays on erythrocyte sedimentation rate. Polski tygod. lek. 9 no.41:1314-1318 11 Oct 54.

1. Z pracowni wlasnej

(ROENTGEN RAYS, effects,

on blood sedimentation rate, small doses)

(BLOOD SEDIMENTATION, effect of radiations on,

x-ray, small doses)

KRAJEWSKI, Henryk, mgr inz.

Similarity criteria of the combustion chambers of jet engines for liquid propelling fuel. Techn lotn 18 no.11: 294-297 N°63.

L 13136-65 EPA/EPG/EPN/EPK(e)-2/EP(b)/EPK(e)/EPK(a)/EPK(m)/ECS(k)/K/PS-2/  
EJP(f) Pr-1/Pr-1/Pr-7 50/10  
ACCESSION NR: AF5001730 2/0008/64/000/012/0302/0305 45  
6

AUTHOR: Krajewski, H. (Master Engineer)

TITLE: Some problems of unstable combustion in the combustion chamber of liquid-propellant rocket engines. PART I

SOURCE: Technika lotnicza, no. 12, 1964, 302-305

TOPIC TAGS: rocket engine, liquid fuel rocket, liquid propellant, unstable combustion, rocket fuel combustion, ignition lag

ABSTRACT: This paper discusses the following problems of unstable combustion in the combustion chambers of liquid-propellant rocket engines: The concept of "unstable combustion"; the predominant effect of ignition lag on the mechanism of unstable combustion (oscillation); the two types of combustion oscillation, low frequency (chugging) and high frequency (screaming); the physical mechanism of combustion oscillation; the factors determining the frequency and amplitude of unstable combustion oscillations. A schematic of the mechanism of low-pressure oscillations is shown as well as oscillograms of low frequency and high frequency pressure oscillations inside the combustion chamber. The dangerous effects of combustion oscillation are also briefly discussed. Orig. art, has: 8 figures and

Card 1/2, Submitted C O

L 33925-65 EPA/EPR(s)/EP/ARPA(s) /INT(W) P-1/7s-1/Pr-1D W/JV  
ACCESSION NR: AF5003180 T/0008/65/000 /001/0001/0009

39  
6

AUTHOR: Krajewski, H. (Master and near)

TITLE: Some problems of incomplete burn-out in the chamber of liquid propellant rocket motors. Part 2

SOURCE: Technika lotnicza, No. 1, 1965, 1-9

TOPIC TAGS: rocket engine, liquid propellant rocket, incomplete burnout, combustion instability

ABSTRACT: The paper discusses the recent hypotheses and trends in the investigation of the combustion processes and combustion instability in the chambers of liquid propellant rocket motors. The following three trends in the investigation of combustion stability are discussed: (i) investigations in which the stability of the front of a flame in a laminar stream is analyzed by the methods of small perturbations; (ii) the effect of reaction kinetics on the course of chemical processes in the case when the latter are of a periodic character; (iii) problems associated with the analysis of the stability of the working process in motors together with theoretical and experimental investigations in order to determine the causes of combustion instability and the effects of separate factors on the stability of the

Card 1/2

L 33925-65

ACCESSION NR: AP5003180

combustion process. The following topics are also discussed: Analysis of the stability of the working process in a motor, analysis of low-frequency instability, the internal instability of the combustion process, the analysis of high-frequency instability, and Sacholkin's criterion of high-frequency stability. The effect of the following working and geometric parameters on the instability of the combustion process was discussed: pressure and pressure drops inside the combustion chamber, the type of fuel used, the diameter of the combustion chamber, the size of the exhaust nozzle, and the injection system used. The effects of the working and geometric parameters on the combustion process inside a combustion chamber are summarized and shown in a table. Orig. art. has: 25 figures, 1 table and 35 formulas.

topics are also discussed: Analysis of the stability of the working process in a motor, analysis of low-frequency instability, the analysis of high-frequency instability, the analysis of high-frequency stability. The effect of the following working and geometric parameters on the instability of the combustion process was discussed: pressure and pressure drops inside the combustion chamber, the diameter of the combustion chamber, the size of the exhaust nozzle, and the injection system used. The effects of the working and geometric parameters on the combustion process inside a combustion chamber are summarized and shown in a table. Orig. art. has: 25 figures, 1 table and 35 formulas.

ASSOCIATION: None

SUBMITTED: 00

ENCL: 00

SUB CODE: PR, JT

NO REF SOV: 013

OTHER: 014

Card 2/2



KRAJEWSKI, J,

"Simplified calculation of multispans halls with lattice girders." p. 360.  
(INZYNIERIA I BUDOWNICTWO Vol. 11, No. 12, Dec. 1954. Warszawa, Poland)

SO:.. Monthly List of East European Accessions. (EEAL). LG. Vol. 4, No. 4.  
April 1955. Uncl.

KLADYSKI, Henryk, mgr. inż.

Instability combustion problems in the combustion chamber of  
liquid fuel rocket engines. D.V. Techn. Letn. 19 no. 1-302-305  
1964.

TARNAWA, Lech, mgr inż.; ANDRZEJEWSKI, Zygmunt; KRAJIEWSKI, Jan

Repairing a TG -9 Alsthom 15 MW turbine. Gosp paliw 11  
Special issue no.(95):59 Ja '63.

1. Elektrownia Warzawa-Powisle.

TARNAWA, Lech, mgr inż.; ANDRZEJEWSKI, Zygmunt; KRAJEWSKI, Jan

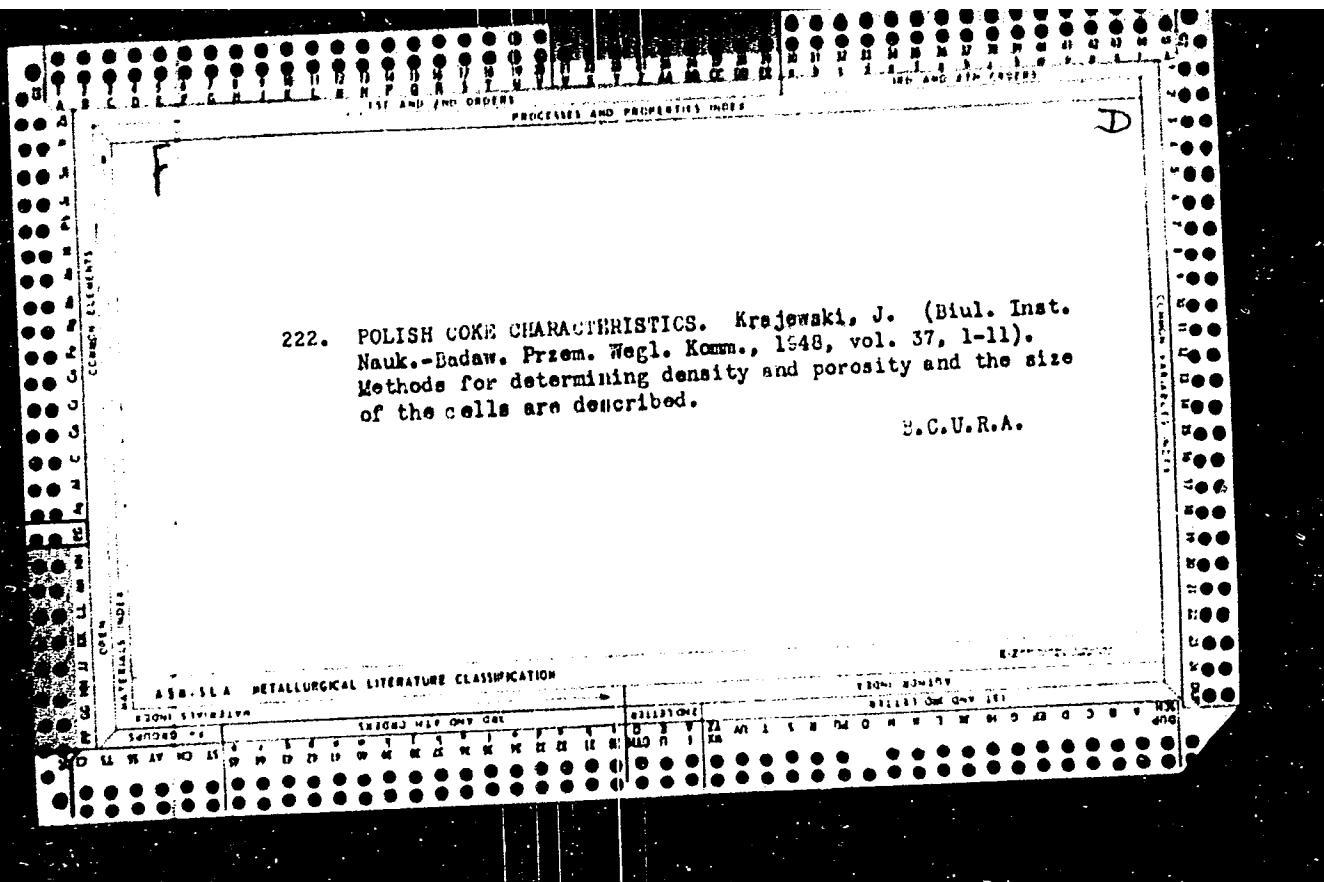
Repairing a TG-9 Alsthom 15 MW turbine. Gosp paliw 11 Special issue no. (95):59 Ja '63.

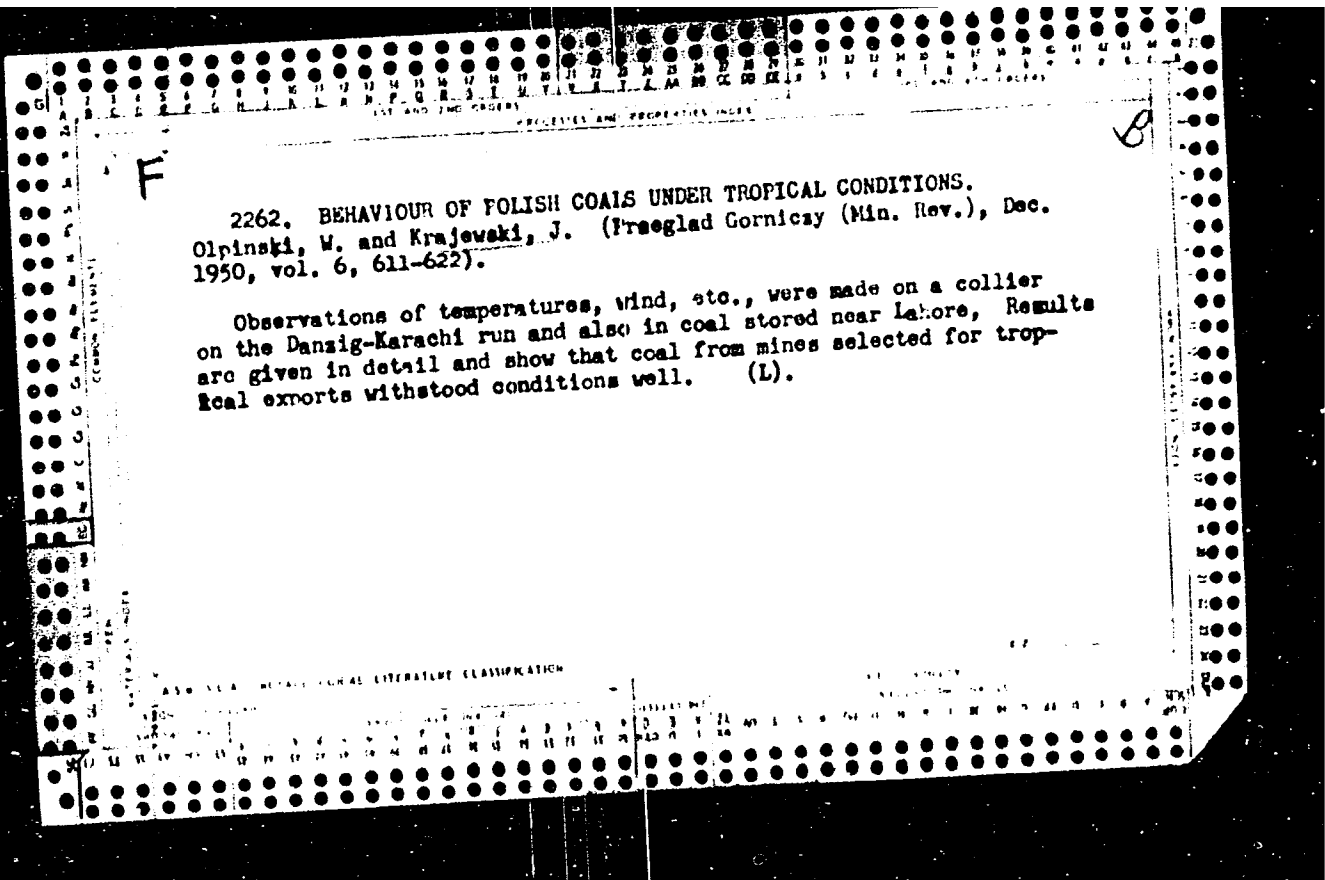
1. Elektrownia Warszawa-Powisle.

KRAJEWSKI, Jan

Effect of past intrauterine intervention on hemorrhage in the  
3d stage of labor. Wlad. lek. 18 no.17:1391-1396 1 S '65.

1. Z Kliniki Chorob Kob. i Pol. 2 Centr. Szpit. Klin. Wojskowej  
AM (Kierownik: doc. dr. med. J. Higier).





F

4949. ELECTROSTATIC SEPARATION OF COALS. PT. I. ELECTRIC CONDUCTIVITY OF COALS AND ACCOMPANYING ROCKS. Krajewski, J. and Herszderfer, S. (Katowice: Prace Glow. Inst. Gorn. (Proc. Chief Inst. Min.), 1951, Komunik. 78, 5pp.). Electric conductivity was studied in order to obtain data for the electrostatic separation of coal dusts. Studies were carried out on polished prisms of coals and rocks and on fines of bright coals. Differences of conductivity between coals and contaminating minerals are given. They are particularly large in the case of fusain. There are considerable differences in conductivity between coals with high and with low hydrogen contents. (L).

C



CA

21

Tests of electrostatic separation of coal. Szymon Hirsztler and Jan Kępczyński. *Prace Geolod. 17*, 355-7 (1954). The method of flotation as applied to low-rank coals appears to be uneconomical. The electrostatic method permits separation without previous sieving of particles smaller than 0.1 mm. Energy requirements for this method are comparatively small, 0.01 kw-hrs per 1 ton of coal. Disadvantages of the necessity of assuring proper H<sub>2</sub>O supply and subsequent drying are avoided. The method discussed (Glarinos) is examined by the Polish Central Mining Inst. A table lists petrographic constituents of coal and impurities accompanying coal and their conductivities. Measurements were carried out under conditions which would normally exist in an electrostatic separator. The initial electrostatic charge prior to electrostatic separation has some influence upon the process. Vitrain tends to travel towards negatively charged electrodes, while inorganic impurities and durain show the opposite tendency. A. I. P.

KRAJEWSKI, J.

Influence of the electric heating of sieves on the process of coal fines and dusts.

p.151.

Problems of industrial safety and mining damages in the State Mining Council. p.157.

(PRZEGLAD GORNICZY. Vol. 13, No. 3, Mar. 1957. Warszawa, Poland)

So: Monthly List of East European Accessions (EEAL) IC. Vol. 6, No. 10, October 1957. Uncl.

KRAJEWSKI, J.

Distillation-extraction method for separating synthetic phenol bottoms in chlorination process. Janusz Krajewski (Inst. Przemysłu Drobnoego Rzemiosła, Warszawa). Inform. Inst. Przemysłu Drobnoego Rzemiosła 5, No. 8, 24-7(1958).—Distn. residue contg., as found by anal. distn. through a lab. 20-plate column, PhOH 15.2, diphenyl ether (I) 9.0, *o*-(II) and *p*-phenylphenol (III) 52.6% by wt. was distd. into 3 fractions: (a) 98.5-220° contg. H<sub>2</sub>O, *p*-C<sub>6</sub>H<sub>4</sub>Cl, PhOH and I (24%); (b) 220-70° contg. I, and II (8.4%); (c) 270-80° contg. I and II (4.6% by wt.). The residue, 63% by wt., was cooled to 20°, mixed with aq. NaOH, and neutralized with H<sub>2</sub>SO<sub>4</sub> to pH 7; resinous sediments were removed, and II and III were filtered at 20°. The solid contained II 75, III 17, and resinous substance 8%.  
A. Sztraufski

3

2909 (H/3)

TA  
//

J.J.

Distr: 4E2c

27

6  
1

Selective enrichment of sands containing zirconium occurring on the Polish coast of the Baltic sea. I. Karol Akerman, Jan Kralowski, Michal Ryzek, and Klemens Krawczewski (Inst. Metall Lekkich i Rzedkich, Skawina, Poland). *Przemysl Chem.* 37, 343-4 (1958) (English summary). Dry and wet sieving and electrostatic and electromagnetic separates of zircon, magnetite, ilmenite, garnet (almendite), and staurolite were obtained from Polish sands. The mineralogical compn. of these sands is: gravel (>2 mm.) 2.3, light fraction 60.2, and heavy fraction 37.5%; the latter fraction contains magnetite 1.2, ilmenite 11.4, zircon 1.8, rutile 0.8, tourmaline 0.3, garnet 16.4, staurolite 0.0, epidote 0.7, disthene (kyanite) 1.7, amphibole 1.8, andalusite in traces, augite 0.1, hypersthene 0.3, olivine in traces, titanite in traces, and apatite 0.1%. From 10 ton of raw sand, after removal of particles larger than 2 mm. and after wet classification to obtain the heavy fraction, the electrostatic sepn. of the latter (27 kv.) produced 2 fractions: nonconducting and conducting fractions. The conducting fraction was subjected to electromagnetic sepn. (0.5 amp.) which yielded the ilmenite fraction (nonmagnetic) and the titanite-magnetite fraction. The nonconducting fraction was subjected to 4-stage electromagnetic sepn. (0.8, 0.8, 1.5, and 1.0 amp.) which yielded 3 fractions: magnetic fraction of pure garnet (almendite), middle fraction contg. staurolite and epidote, and nonmagnetic fraction which after sieving gave zircon concentrate (particles below 0.15 mm.) and disthene (particles above 0.15 mm.). The sands from the Jaroslawiec district gave 1.34% zircon concentrate which contained over 50%  $ZrSiO_4$ , corresponding to approx. 95% yield. This fraction contained also ilmenite 8.3, rutile 16.6, disthene 6.8, staurolite 3.1, and light fraction 14.4%. The ilmenite fraction contained over 80% ilmenite. The epidote concentrate showed an increase in radioactivity over the raw material. P. T. Hendel

KRAJEWSKI, J.; CZUBAKOWSKI, H.

The influence of mechanical treatment of the web on the work of fillet welds in plate girders. p. 118.

INZYNIERIA I BUDOWNICTWO. (Naczelna Organizacja Techniczna i Polski Związek Inżynierów i Techników Budowlanych) Warszawa, Poland.  
Vol. 16, no. 3, Mar. 1959.

Monthly list of East European Accessions Index, (EEAI), LC, Vol. 8, no. 6,  
June 1959  
uncla.

WIELOPOLSKI, Aleksander; DAHLIG, Włodzimierz; KRAJEWSKI, Janusz; SWIERKOT,  
Jan

Chlorinated polyethylene. Pt. 1. Polyethylene chlorination.  
Polimery tworzyw wielk 7 no.6:199-206 Je '62.

1. Polska Akademia Nauk, Warszawa (for Wielopolski and Krajewski).
2. Zakład Technologii Organicznej I, Politechnika Warszawa (for Dahlig).
3. Instytut Przemysłu Drobno- i Rzemiosła, Warszawa (for Swierkot).

WIELOPOLSKI, Aleksander; KRAJEWSKI, Janusz; SWIERKOT, Jan

Speedy determination of chlorine in organic compounds. Chem anal  
7 no.6:1139-1148 '62.

1. Zakład Syntezy Organicznej, Polska Akademia Nauk, Warszawa (for  
Wielopolski and Krajewski). 2. Instytut Przemysłu Drobego i  
Rzemiosła, Zakład Chemii, Warszawa (for Swierkot).

MALINSKI, Boguslaw; GOLEBIOWSKI, Leonard; KRAJEWSKI, Janusz

Multiple complicated and uncomplicated gastric and duodenal ulcers. Pol. przegl. chir. 36 no.12:1421-1427 D '64

1. Z III Kliniki Chirurgicznej Studium Doskonalenia Lekarzy Akademii Medycznej w Warszawie (Kierownik: prof. dr. J. Dryjski).



KRAJEWSKI, Karol

Application of the UMC-1 universal computer to the prognostication of a group of hydrological phenomena. Przegl geofiz 7 no.2:85-94 '62.

1. Katedra Hydrologii i Gospodarki Wodnej, Politechnika, Warszawa.

KRAJEWSKI, Karol, mgr inż.

Determination of the operating conditions of a retention reservoir by means of an electronic computer. Archiw hydrotech 10 no.2:195-213 '63.

1. Katedra Hydrologii i Gospodarki Wodnej, Politechnika, Warszawa.

KRAJEWSKI, MICHAL

Krajewski, Michal. Obliczenia sieci wodociagowej i urzadzen pomowni na kolejach. Warszawa, PPW Wydawn. Komunikacyjne, 1951. 200 p. (Biblioteka komunikacyjna) (Manual for calculating water-supply systems and pump installations of railroads. Diagr.)

SO: Monthly list of East European Accessions, LC, Vol. 3, No. 1, Jan. 1954, Uncl.

PTA

9

1250

63.01 : 69

Krajewski M. *Theory and Practice of Scientific Work Organization in the Building Trade.*

„Teoria i praktyka naukowej organizacji pracy w budownictwie — orzecem walki o autorytet kierownika budowy”. *Przegląd Budowlany*, No. 4, 1951, pp. 148—152, 2 figs.

Scientific work organization in capitalist countries, in pre-war Poland and in People's Poland. Work harmonograms as the basis for complete execution of tasks. Principles for selection of skilled workers and for organizing teams. The issue and control of instructions. The importance of team work as introduced in accordance with the new Catalogue of Standards and Unit Prices; examples and analyses. Emulation in capitalist countries and in countries of People's Democracy. Organization and propaganda of emulation on the building site. Influence of emulation on the harmonogram. Rationalisation and inventive trend as the result of emulation. The manner in which the latest and most efficient working methods are employed is a proof of the proficiency of the supervisor of work in teams.