

GEKHMEN, B.S., doktor med.nauk; KORIKOV, M.L. (Khabarovsk)

Pneumoretroperitoneum in the diagnosis of paranephritis.  
Vest. rent. i rad. 40 no.5:39-42 S-0 '65.

(MIRA 18:12)

GEBMAN, L. A.

USSR/Engineering - Hydraulics, Pumps

Feb 52

"Water-Jet Pumps for Lifting Water From Wells,"  
V. M. Papin, Cand Tech Sci, L. A. Gekhman, Engr

"Gidrotekh i Melio" No 2, pp 45-52

Describes construction of water-jet pump, designed in Lab of Water Supply, Sci Res Inst "Ukrvodgeo," for lifting water from wells of 100, 150 and 200 mm diam. Installation, working jointly with centrifugal pumps, is simple and may be constructed in any shop. Its efficiency factor is 0.28-0.32.

212T48

KORYTNYI, Ye.Ya.; GELMAN, M. Kh.

Effect of a novocaine block used by A.V. Vishnevskii's method  
on the regeneration of an injured skeletal muscle. Trudy SMI  
15:131-140 '62 (MIRA 17:87)

1. Iz kafedry gistologii (zav. - dotsent V.V. Anisimova-  
Aleksandrova) Smolenskogo gosudarstvennogo meditsinskogo in-  
stituta.

GEKHTMAN, M.M.

Spectrum of a nonself-adjoint differential operator of the fourth order. Vest. Mosk. un. Ser. 1: Mat., mekh. 19 no.6:24-34 N-D '64.  
(MIRA 18:2)

1. Kafedra teorii funktsiy i funktsional'nogo analiza Moskovskogo universiteta.

115

GERHMAN, S.G.

Glutathione in preserved blood. S. G. Gerhman and I. P. Vlasovskii. *Klin. Med.* (U. S. S. R.) 10, 1972, 6 (1978).—The total glutathione (G) of preserved blood falls 1.3 mg. % on the 1st day and then remains const. for 5-6 days, after which rapid descomp. occurs, resulting in the complete disappearance of G in 21-26 days. S. A. Karidi

ASS. 15-A METALLURGICAL LITERATURE CLASSIFICATION

**GEXHMAN, S.G.**

**Condition of erythrocytes in erythrocytic suspension in preserved blood. Klin. med., Moskva 30 no. 7:92 July 1952. (CIAML 22:4)**

**1. Candidate Medical Sciences. 2. Of Kiev Blood Transfusion Station (Head -- L. S. Tsymbal; Consultant -- Prof. A. A. Fedorovskiy).**

RAFAL'SON, D.I., kand.med.nauk; RABINOVICH, S.I., nauchnyy sotrudnik (Leningrad); Logvinova, O.K. (Irkutsk); Okorokov, N.I.; VIRIN, I.Ya. (Smolensk); GIKHMAN, S.I., kand.med.nauk (Kiyev).

Acceleration of the regeneration of blood in donors in various cities of the Soviet Union following use of the preparation Hemoglobin 4. Akt. vop.perekl.krovi no.4:15-18 '55. (MIRA 13:1)

1. Donorskiy otdel i laboratoriya sukhikh preparatov krovi (sav. laboratoriyey - doktor med.nauk L.G. Bogomolova) Leningradskogo instituta pereklivaniya krovi.

(HEMOPOIETIC SYSTEM)

GEKHMAN, Yu. L., inzh.; SHVARTS, S.S., inzh.

Rapid loading and unloading of ships in the Odessa harbor.  
Biul.tekh.-ekon. inform. Tekh.upr.Min.mor.flota 7 no.10:  
88-97 '62. (MIRA 16:9)

1. Odesskiy port.

(Odessa--Cargo handling)



GEKHORZAN, L.

Development of railroad transportation in the People's Republic of Poland. p. 92.

TRANSPORTNO DELO. Vol. 8, no. 2, 1956

Sofia, Bulgaria

SOURCE: East European Accessions List (EEAL) Library of  
Congress, Vol. 6, No. 1, January 1957

GEKHRID, H.Ye., insh.

KBS machine unit for manless coal mining. Ugol' Ukr. 4  
no.5:39-40 My '60. (MIRA 13:8)  
(Coal mining machinery)  
(Coal mines and mining)  
(Automation)

GEKHRID, M.Ye., inzh.

Means for coal-dust control. Bezop.truda v prom. 5 no.6:17-18  
Je '61. (MIRA 14:6)

1. Gorlovskiy mashinostroitel'nyy zavod imeni S.M. Kirova.  
(Mine dusts--Safety measures)

SYUSIL', A.V., inzh.; GEKHRID, M.Ye.

Operation of the UVK-1 rope coal saw. Ugol'.prom. no.1:19-23  
Ja-F '62. (MIRA 15:8)

1. Nachal'nik sektora vyyemochnykh mashin spetsial'nogo konstruktor-  
skogo byuro Gorlovskogo mashinostroitel'nogo zavoda im. S.M.  
Kirova (for Gekhrid).  
(Coal mining machinery)

GEHRID, M.

For steeply pitching seams. Mast. ugl. 9 no.6:18-19 Ja '60.  
(MIRA 13:7)

1. Nachal'nik sektora vyyemochnykh mashin konstruktorskogo byuro  
Gorlovskogo mashinostroitel'nogo zavoda im. Kirova.  
(Gorlovo--Coal mining machinery)

GEKHT, A.Kh., insh.

Designing mechanical lifting-capacity controllers for hoisting cranes. Stroiki dor, mashinostr. 4 no.12:10-16 D '59.  
(MIRA 13:3)

(Cranes, derricks, etc.)

GEXHT, A.Kh., inzh.; MATVEYEV, A.I., inzh.

Rotary compressors for cement motortrucks. Stroi. i dor. mash.  
9 no.1.18-19 Ja '64. (MIRA 18:7)

GEKHT, A.Kh., inzh.

Device for simultaneous unloading of cement from three containers.  
TSement 31 no.4:17-19 J1-Ag '65. (MIRA 18:8)

1. Vsesoyuznyy nauchno-issledovatel'skiy institut stroitel'nogo i dorozhnogo mashinostroyeniya.



GEKHT, B. I.

USSR/ Geophysics - Petroleum Well Yield

1 Sep 53

"The Yield of an Oil Well When the Supply Contour is of Arbitrary Shape," V. L. Danilov, Phys-Tech Inst of Kazan Affiliate, Acad Sci USSR

DAN SSSR, Vol 92, No 1, pp 21-24

Employs in the calculation of oil well yield the math methods developed in his candidate dissertation (Kazan, 1951), "Calculation of Hydrodynamic Grids." Also cites B. I. Gekht's candidate dissertation (Kazan, 1952), "Solubility of Nonlinear Integral and Integro-Differential Eqs by the Method of Successive Approximations." Remarks that the problem of detg the yields of oil wells is of considerably interest for underground hydraulics. Presented by Acad. A. I. Nekrasov 20 Jun 53.

274T58

GEKHT, B. I.

Gekht, B. I. On non-uniform convergence of a sequence of continuous functions. *Novosibirsk. Politekh. Inst. Trudy* 23 (1953), 161-162. (Russian)

Let  $E$  be a closed subset of  $[0, 1]$ , and let  $\{f_n(x) = \sum_{k=1}^n (a_k + b_k x)^2\}$  with  $a_k, b_k \in E$  and  $(a_k, b_k) \in (0, 1)^2$  for  $k=1, \dots, n$ . Let  $\{a_k\} \subset (0, 1)$  and  $\{b_k\} \subset (0, 1)$  have limits  $a$  and  $b$ , respectively. If  $f_n(x) \rightarrow 0$  at  $(a_k + a_{k+1})/2$  and  $(b_k + b_{k+1})/2$  ( $k=1, 2, \dots, n$ ),  $a, b \in E$ ,  $(a, b) \in E$  and  $[0, 1] - U^* (a, b)$  and linear elsewhere on  $[0, 1]$ , then  $f_n(x) \rightarrow 0$  if  $E$  is nowhere dense, then the set of points of non-uniform convergence of  $\{f_n\}$  [Book reviewed above, p. 99] is precisely  $E$ .

A. E. Livingston (Seattle, Wash.)

*ELM*

ОФКНТ, Б.И.

ОФКНТ, Б.И. (Novocherkassk)

M.V. Pentkovskii's book "The calculating drawings." Mat. v shkole  
no.4:79-80 J1-Ag '54. (MIRA 7:7)  
(Nomography (Mathematics)) (Pentkovskii, M.V.)

GEKHT, B.I., kandidat fiziko-matematicheskikh nauk.

Solvability nonlinear singular integral and integro-differential equations by the method of success approximation. Nauch. trudy NPI 26:436-454 '55. (MIRA 9:12)  
(Differential equations) (Integral equations)

GEKHT, B.I.

Solvability of nonlinear singular integral equations by the iteration  
method. Uch. zap. Kaz. un. 116 no.4:11-139 '56. (MLRA 10:4)  
(Integral equations)

GRASHCHENKOV, N.I., prof.; ROGOVER, A.B., kand.med.nauk; GEKHT, B.M.;  
-VEYN, A.M., kand.med.nauk (Moskva)

Some problems in the distribution of multiple sclerosis. Klin.med.  
38 no.9:6-12 S '60. (MIRA 13:11)

1. Deystvitel'nyy ohlen AMN SSSR (for Grashchenkov).  
(MULTIPLE SCLEROSIS)

GRASHCHENKOV, N.I.; GEKHT, B.M.; FISHMAN, M.N. (Moskva)

Eleventh yearly meeting of the American Academy of Neurology. Zhur.  
Zhur. nevr. i psikh. 60 no.3:369-373 '60. (MIRA 14:5)  
(UNITED STATES--NEUROLOGY)

GRASHCHENKOV, N.I.; VEYN, A.M.; GEKHT, B.M. (Moskva)

Clinical anatomical analysis of disorders of brain blood supply,  
arising on the basis of hypertension and arteriosclerosis of the  
cerebral blood vessels. Zhur. nerv. i psikh. 60 no. 6:683-  
689 '60. (MIRA 13:12)

(BRAIN—BLOOD VESSELS) (HYPERTENSION)



GEKHT, B.M.

Amount of copper in the tissues of the brain under normal conditions and in various diseases of the nervous system. *Biul. eksp. biol. i med. no.2:49-54 F '61.* (MIRA 14:5)

1. Iz kliniki nervnykh bolezney I Moskovskogo ordena Lenina meditsinskogo instituta imeni I.M.Sechenova i laboratorii neyrogumoral'noy regulyatsii Instituta vysshey nervnoy deyatel'nosti AN SSSR, Moskva. Predstavlena deystvitel'nym chlenom AMN SSSR S.Ye.Severinym.

(BRAIN)

(COPPER METABOLISM) (BRAIN—TUMORS)  
(HEPATOLENTICULAR DEGENERATION)

GEKHT, B.M.

Amount of copper in the blood serum in normal subjects and in patients with some diseases of the brain. Zhur. nevr. i psikh. 61 no.5:707-712 '61. (MIRA 14:7)

1. Klinika nervnykh bolezney I Moskovskogo Ordena Lenina meditsinskogo instituta imeni I.M.Sechenova.  
(COPPER IN THE BODY)  
(HEPATOENTICULAR DEGENERATION)  
(BRAIN--DISEASES)

GRASHCHENKOV, N.I.; MEL'NIKOV, S.A.; ROGOVER, A.B.; VEYN, A.M.; GSKHT, B.M.

Multiple sclerosis and its geographic distribution. Vest. AMN SSSR  
16 no.6:57-60 '61. (MIRA 15:1)

1. I Moskovskiy ordena Lenina meditsinskiy institut imeni I.M.  
Sechenova. (MULTIPLE SCLEROSIS) (MEDICAL GEOGRAPHY)

MEL'NIKOV, S.A.; VEYN, A.M.; GEKHT, B.M.

Clinical aspects of the basic syndromes in some chronic progressive diseases of the nervous system. Zhur. nevr. i psikh 61 no.8:1160-1167 '61. (MIRA 15:3)

1. Klinika nervnykh bolezney I Moskovskogo ordena Lenina meditsinskogo instituta imeni I.M. Sechenova.  
(NERVOUS SYSTEM--DISEASES)  
(MOVEMENT DISORDERS)

GRASHCHENKOV, I.I., prof.; BOYEVA, Ye.M., kand. med. nauk; VEYN, A.M.,  
kand. med. nauk; GEKHT, B.M.; IL'INA, N.A., kand. med. nauk;  
ROMASENKO, V.A., kand. med. nauk; YAKOVLEVA, N.A., tekhn.  
red.

[The neuropathologist's handbook] Spravochnik nevropatologa.  
Pod obshchei red. N.I. Grashchenkova. Moskva, Medgiz, 1962.  
374 p. (MIRA 15:9)

1. Chlen-korrespondent Akademii nauk SSSR deystvitel'nyy chlen  
Akademii meditsinskikh nauk SSSR (for Grashchenkov)  
(NERVOUS SYSTEM—DISEASES)

GRASHCHENKOV, H.I.; GEKHT, B.M. (Moskva)

Problems with regard to lesions of the nervous system during metabolic disorders and diseases of the liver according to data of the Seventh International Neurological Congress.

Terap. arkh. 35 no.1:105-112 Ja'63. (MIIA 16:9)

(LIVER—DISEASES) (METABOLISM, DISORDERS OF)

(NERVOUS SYSTEM—DISEASES)

GRASHCHENKOV, N.I.; GEKHT, B.M.; SUDOV'YENA, A.I.

Diagnosis of hypothalamus lesions. Zhur. nevr. i psikh. 63 no.8:  
1121-1126 '63. (MIRA 17:10)

1. Laboratoriya klinicheskoy neyrofiziologii AMN SSSR i laboratoriya  
neyro-gumoral'noy regulyatsii (zav. - prof. N.I. Grashchenkov) AN  
SSSR, Moskva.

KASSIL', G.N.; GEKHT, B.M.; SOLOV'YEVA, A.D.; UGOLEVA, S.V.

Insulin test in the clinical aspects of diencephalic pathology.  
Zhur. nevr. i psikh. 64 no.9:1327-1333 '64. (MIRA 17:12)

1. Laboratoriya neyro-gumoral'noy regulyatsii AN SSSR i  
laboratoriya klinicheskoy neyrofiziologii (zaveduyushchiy - prof.  
N.I. Grashchenkov) AMN SSSR, Moskva.



GRASHCHENKOV, N.I., ed.; GEKHT, B.M., ed.

[Myasthenic disorders; their physiology, pathophysiology, and clinical aspects] Miastenicheskie rastroiatva; fiziologiya, patofiziologiya, klinika. Moskva, Nauka, 1965.  
308 p. (MIRA 18:8)

1. Akademiya nauk SSSR. Laboratoriya po izucheniyu nervnykh i gumoral'nykh regulyatsii. 2. Laboratoriya po izucheniyu nervnykh i gumoral'nykh regulyatsiy AN SSSR, Moskva (for Grashchenkov).

GEKHT, I.I.

Gekht, I.I.--"Utilization of Xanthogebates to Determine Cobalt in Ores By the Photo-colorimetric Method." Cand Chem Sci, Inst of Geological Sciences, Acad Sci Kazakh SSR, Alma-Ata 1953. (REFERATIVNIY ZHURNAL--KHIMIYA, No 1, Jan 54)

Source: SUM 168, 22 July 1954

POKROVSKAYA, I.V., GEKHT, I.I., VILESHINA, T.L.

Tetradymite in the trans-Ili Ala-Tau. Izv. AN Kazakh. SSR. Ser.  
geol. no.1:117-119 '60. (MIRA 13:8)  
(Trans-Ili Ala-Tau--Tetradymite)

GEEKHT, I.I.; POTOX, S.I.

Determination of ferrous oxide in tourmalines in small batches.  
Vest.Kazakh.SSR 16 no.9:68-71 S '60. (MIRA 13:9)  
(Iron oxides) (Tourmaline)

BASHKIROV, V.G.; VEYTS, B.I.; GEKHT, I.I.; ZAYTSEVA, E.I.

Neogenic formations in the fire zone of the Tekeli deposit.

Trudy Inst.geol.nauk AN Kazakh.SSR 7:156-192 '63.

(MIRA 17:9)

KIM, V.A.; KAIPOV, A.D.; GEKHT, I.I.

Pyrophyllite and rocks containing pyrophyllite from the Akbastau  
pyrite-complex metal deposit. Trudy Inst.geol.nauk AN Kazakh.SSR  
7:266-272 '69. (MIRA 17:9)

ANKINOVICH, Ye.S.; VIGORSHIN, T. I.; GAKOV, I. I.

Volbortnite from the Mikola Gomborin vanadium-bearing schists of  
Kazakhstan. Vest. AN Kazakh. SSR. 19 no.5:55-62. 1973.  
(1973, 1977)

ANKINOVICH, Ye.A.; GEKHT, I.I.; ZAYTSEVA, R.I.

Carbonate cyanotrichite, a new variety of cyanotrichite. Zap.Vses.min.  
ob-va 92 no.4:458-463 '63. (MIRA 17:2)



KA' UPOVA, H.H.; ZAYTSEVA, R.I.; GEKHT, I.I.

Penwithite from the Ushkatyn deposit in central Kazakhstan.  
Vest. AN Kazakh. SSSR 20 no.12:61-63 D '64 (MIRA 18:2)

STAROV, V.I.; MONICH, V.K. [deceased]; GEEHT, I.I.; KULINICH, V.B.

Potassium feldspar of some of the different age intrusions.  
Trudy Inst. geol. nauk AN Kazakh. SSR 12:108-112 '65.  
(MIRA 18:9)

GEKKER, I.R.

Increasing the efficiency of microwave devices by delaying electrons  
in the collector. Izv. vys. ucheb. zav.; radiotekh. 3 no.4:411-447  
Jl-kg '60. (MIRA 13:10)

1. Rekomendovana Institutom radiotekhniki i elektroniki AN SSSR.  
(Microwaves) (Klystrons)

85451

28.1000  
1.5100

1089,1070

S/117/60/000/011/002/035  
A004/A001AUTHORS: Abakumov, M. M., Gekht, M. P.

TITLE: The Automation of Equipment Already in Operation

PERIODICAL: Mashinostroitel', 1960, No. 11, pp. 5-7

TEXT: The authors present a survey of the automation of standard machine tools which, fitted with automatic loading and unloading equipment, yield a high output and are successfully employed in automatic production lines. Thus, at the Izhevskiy mashinostroitel'nyy zavod (Izhevsk Mechanical Engineering Plant) standard multi-purpose machine tools have been turned into semi-automatics and full automatics, which made it possible to increase the efficiency of equipment, operating in a semi-automatic cycle, by 15 - 30%, while the efficiency of those machine tools operating in a fully automatic cycle could be increased by 30 - 60%. The model 161A screw-cutting lathe, e. g., was modernized and converted into a high-efficient automatic. The lathe was fitted with an adjustable loading installation of the gravity magazine feed type, connected to the control system of the lathe, with a device for the automatic feed and clamping of the work pieces, an automatic tool advancing and withdrawal mechanism, and also with an automatic

Card 1/5

85451

The Automation of Equipment Already in Operation

S/117/60/000/011/002/035  
A004/A001

longitudinal feed and accelerated withdrawal feed of the carriage. The automation of the lathe was carried out using a pneumatic path system, i. e. the subsequent order is given to the lathe after an operation has been terminated according to the preceding order. Figure 1:

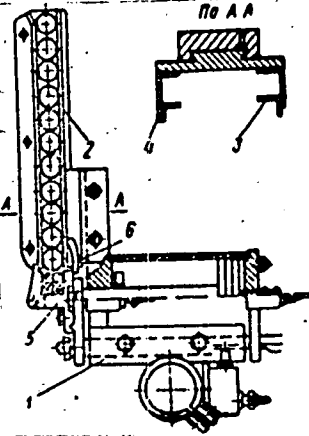


Figure 2:

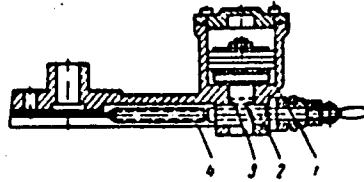


Figure 1 shows the universally adjustable gravity magazine feed system of the 161A lathe, while Figure 2 shows the operation of the tool advance with the aid of the pneumatic cylinder 1, stationary bush 2, double-arm

wedge 3, rapidly displacing the slide 4 towards the workpiece. Furthermore, a horizontal milling machine was converted into a high-efficiency automatic, by equipping it with a standard loading device, feed hopper, magazine and drum-type setting device operated by a worm reducer. This automated milling machine yields an output of 14,000 machine parts per shift. The authors distinguish between forced, semi-automatic and automatic conveyor systems.

Card 2/5

85451

S/117/60/000/011/002/035  
A004/A001

The Automation of Equipment Already in Operation

While the two former are driven by electric, pneumatic or hydraulic motors, the latter convey the blanks and workpieces by gravity. Figure 4 shows a distributing chain-conveyer which feeds the blanks to several machine tools operating in parallel. The blanks are put on the conveyer by a chute 3 and are fed to the machine through the chute 4, which is fitted with a discharge mechanism by which the blanks are adjusted on the machine tool for machining. The authors state that at the Moskovskiy avtomobil'nyy zavod (Moscow Automobile Plant) highly efficient automatic production lines have been developed by combining auto-

mated machine tools with automatic handling equipment. Figure 6 shows an automatic line, developed at the "Frezer" Plant according to a design of the "Orgstankinprom" Institute. This line, composed of modernized machine tools, is designated for the machining of 16 different sizes of hand-operated and mechanical taps with ground and non-ground thread profile.

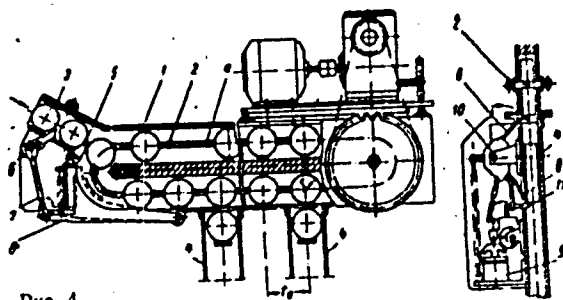


Fig. 4.

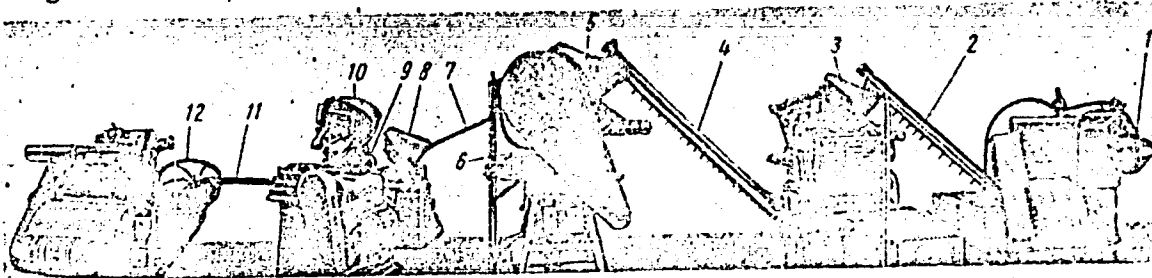
Card 3/5

05451

S/117/60/000/011/002/035  
A004/A001

The Automation of Equipment Already in Operation

Figure 6:



The line is composed of 6 automated multi-purpose machine tools, which have already been in operation for 10 - 15 years before being incorporated in the line, and are connected by automatic conveying devices. Each machine tool is fitted with an individual adjustable multi-purpose feed hopper loading device, which makes it possible to set and readjust the machine tools subsequently, without stopping the operation of the line. The tap blanks, preliminarily turned on automatic lathes, are loaded into the hopper of the centerless grinding machine 1. After being machined on that machine, they are conveyed by the chain conveyor 2

Card 4/5

85451

The Automation of Equipment Already in Operation

S/117/60/000/011/002/035  
A004/A001

to the hopper of the second centerless grinding machine 3, from there onto the lining-up and sorting mechanism and then into the magazine. A pneumatic feeder places the tap in the machining position. The ground tap is conveyed by a chute onto the receiving part of the chain conveyer 4, which transports the tap to the lining-up unit of the eccentric press 5, where the square of the tap end piece is stamped with two strokes of the press. Over the chain conveyer 6 the taps are conveyed to the U-shaped chute 7 and, by gravity feed, get into the hopper of the branding machine 8. The branded taps are chuted into the receiving part of the conveyer 9, by which they are lifted into the hopper of the threading machine 10. After the thread being cut, the taps are placed on the inertia conveyer 11, which conveys them to centerless grinding machine 12 where the working part of the tap is ground. The labor productivity of a worker has increased by 6 times after the introduction of this automatic line. The modernization costs are compensated in the course of two years. There are 6 figures. X

Card 5/5



GEKHT, M. R.

TK 127W9

USSR/Metals - Cast Iron, Melting

Sep 51

"Melting Gray Cast Iron With Application of Peat  
Coke," M. R. Gekht, Engr

"Litey Proiz" No 9, p 23

Describes experience in using peat as partial replacement of coke in charges of cupola furnaces. Such substitution in combination with reconstruction of cupola improved quality of castings and decreased rejection by 65%. Possibility of overheating molten metal to temp above 1,360-1,400° permits production of high-quality inoculated and high-strength cast irons.

197T89

GUKHT, M. R.

GUKHT, M. R.: "The effect of certain factors on the commercial properties of gray cast-iron parts." Min Trade USSR. Moscow Inst of National Economy imeni G. V. Plakhanov. Moscow, 1956. (Dissertation for the Degree of Candidate in Technical Sciences).

SO: Knizhaya Letopis', No 23, 1956

*cd-15/1/15*  
KOMAROV, Fedor Vasil'yevich; NIKOL'SKIY, Vladimir Nikolayevich;  
BORISOV, G.S., red.; GEKHT, M.R., red.; SUKHAREVA, R.A., tekhn.red.

[Experience in modernizing machine tools] Iz opyta modernizatsii  
metalloreshushchikh stankov. Moskva, Mosk.dom nauchno-tekhn.  
propagandy im. F.E.Dzerzhinskogo, 1957. 21 p. (Peredovoi opyt  
proizvodstva. Seriya "Mashinostroenie," no.9) (MIRA 10:12)  
(Machine tools)

BOGATSKIY, D.P.; GEEKHT, M.R.; LASTOVSKIY, L.P.

Chemical nickel plating used for reconditioning and increasing the wear resistance of machine parts. Nauch.dokl.vys.shkoly; mash. i prib. no.1:222-226 '59. (MIRA 12:8)

1. Stat'ya predstavlena kafedroy "Tekhnologiya metallov i remont mashin" Moskovskogo tekhnologicheskogo instituta legkoy promyshlennosti.

(Nickel plating)

ABAKUMOV, M.M.; OMKHT, M.R.

Automation of equipment in operation. Mashinostroitel' no.11:5-7  
# '60. (MIRA 13:10)

(Automation)

KATS, Nikolay Vasil'yevich; ARNAUTOV, P.N., retsenzent; GEKHT, M.R.,  
retsenzent; KALININA, N.M., red.; AKSENOVA, I.I., red.;  
SHAPENKOVA, T.A., tekhn. red.

[Metallization of textile fabrics] Metallizatsia tkanei. Mo-  
skva, Rostekhzdat, 1962. 169 p. (MIRA 15:9)  
(Textile finishing) (Metal spraying)

GEKHT, P.Sh., inzhener.

Cutting and shaving helical conical gears. Vest. mash. 36  
no.8:37-41 '56. (MLRA 9:10)

(Gear cutting)

GEKHT, P.Sh., inzh.; GOLOD, V.P., inzh.

Shavers for removing edges and burrs from pinions. Vest.mash.  
40 no.2:56-60 F '60. (HIRA 13:5)  
(Gear-cutting machines)



GEKHT, P. Sh., inzh.; GOLOD, V. N., inzh.

Machins for removing chamfers and burrs from pinions by means  
of a special shaver. Mashinostroenie no.5:28-31 9-0 '62.  
(MIRA 16:1)

(Machine tools)

GEKHT, P.Sh.

Design of a shaver for shaving bevel gears with helical teeth.  
Stan.1 instr. 33 no.12:18-21 D '62. (MIRA 16:1)  
(Gear-cutting machines)

BELKIN, Ya.M., kand.tekhn.nauk; GEKHT, S.I., inzh.; KHAIMSKIY, A.M., inzh.

Determining the actual moisture of a lime-sand mixture made  
with ground unslaked lime. Sbor.trud.ROSNIIMS no.19:3-5 '61.  
(MIRA 16:1)

(Sand-lime products)

*10-11-56*  
KURDYUKOV, K.V.; GEMHT, Ye.R.

Geological structure and neotectonics of Iyulin-Ver Ridge in the northern trans-Ural region. Izv.AN SSSR.Ser.geol.21 no.11:28-38 N '56. (MIRA 10:1)

1. Vsesoyuznyy aerogeologicheskii trest, Ministerstvo geologii i okhrany neдр SSSR, Moskva.  
(Iyulin-Ver Ridge--Geology, Structural)

GEKHTEBARG, Ye., Inzhener.

Basic measurements and indices of merchant marine work. Blok.  
agit.vod.transp. no.5:31-42 Mr '56. (MLRA 9:8)  
(Merchant marine)

GUKHTBARG, Ye., inshener.

Combined railroad and water shipping of goods. Blok. agit.  
vod. transp. no.22:21-30 N '56. (MLRA 9:12)

(Railroads--Freight) (Shipping)

~~GEKHTBARO, Ye.~~

Local transportation of passengers and cargo. Blok. agit. ved. transp.  
no.5:23-31 Nr '57. (MIRA 10:4)

(Shipping)

GERKHARG, Ye. A.

BERTAN, Sergey Fedorovich, detent, head, okm, work; BRUGNETS, Isif  
 I'vovich, detent, head, okm, work; BILINSKIY, Yuriy Fedorovich,  
 starshiy preprodavatel'; DOLITSKIY, Ye. I., prof., doktor okm, work,  
 rukovoditsya; GERSHCOV-YEDINOV, A. S., starshiy preprodavatel',  
 rukovoditsya; FIOLOV, A. B., detent, head, okm, work, rukovoditsya;  
 KUDLAKHO, S. E., inzh., rukovoditsya; KOLYCHEN, Ye. A., abakzhny  
 red., v redaktirovaniy prislomii uchastiy; OZANOV, S. K., detent,  
 red.; RUCHEK, V. Zh., inzh., red.; KARTLOSOV, A. Ye., inzh., red.;  
 KHAN'KOV, S. I., starshiy nachalnik vedomstva, red.; KRASHCHENNIKOV,  
 V. G., detent, head, okm, work, red.; KUCHENKO, Ye. A., inzh., red.;  
 KUCHENKOV, G. G., inzh., red.; PRIMOVIKH, M. M., inzh., red.;  
 KAPPEL, S. B., detent, head, okm, work, red.; KUZ'NIN, V. F., inzh.,  
 red.; PHELIPPOV, S. B., red., KURKOPUTOV, Ye. F., red, red-vo; TIKHO-  
 BINA, Ye. A., inzh., red.

[Economics of water transportation] Ekonomika vodnykh transportov.  
 Pod obshchimi red. Ye. A. Kuchukhina. Moskva, Izd-vo "Morskoi transport",  
 1959. 393 s. (MIRA 13:3)

(Shipping-Planes)



GEKHTBARG, Ye.

All efforts to the carrying out of the transportation plan for  
the fourth year of the seven-year period. Mor. flot 22 no.2:  
1-4 F '62. (MIRA 15:4)

1. Nachal'nik Otdela operativnogo planirovaniya Glavflota  
Ministerstva morskogo flota.  
(Shipping)

GEKHTBARG, Yefim Aronovich; PLETNEV, V.S., red.; MAL'KOVA, V.H.,  
tekh. red.

[Operational planning of cargo transportation by the  
merchant marine] Operativnoe planirovanie perevozok gru-  
zov na morskoy transporte. Moskva, Izd-vo "Morskoy tran-  
sport," 1963. 119 p. (MIRA 17:3)

KORYAKIN, Sergey Fedorovich, kand. ekon. nauk, dots.; BEND SHEFF, Iosif L'vovich, kand. ekon. nauk, dots.; Primal uchastiy: FILINSKIY, Yu.F., st. prep.; SHERASHTEYN, Ye.A., dots., retsenzent; CHERKASV-TSIBIZOV, A.A., st. prepod., retsenzent; MILYUKOV, M.A., st. prepod., retsenzent; MOZHAROV, N.D., kand. ekon. nauk, retsenzent; MAKAL'SKIY, I.I., kand. ekon. nauk, retsenzent; KAEMER, B.A., inzh., retsenzent; PETRUCHIK, V.A., kand. ekon. nauk, red.; GUBERMAN R.L., kand. ekon. nauk, red.; RODIN, Ye.D., kand. ekon. nauk, red.; DUBCHAK, V.Kh., inzh., red.; MARTIROSOV, A.Ye., inzh., red.; Palyushkin, V.A., inzh., red.; BELOV, M.I., doktor geogr. nauk, red.; SINITSYN, M.T., inzh., red.; KOLESNIKOV, V.G., kand. tekhn. nauk, red.; ZAMAKHOVSKIYA, A.G., kand. ekon. nauk, red.; KUZ'MIN, T.P., inzh., red.; NEMCHIKOV, V.I., kand. tekhn. nauk, red.; GEKHTBARG, Ye.A., inzh., red.; FILIPPOV, K.D., red.; KRUGLOVA, Ye.M., red.

[Economics of the merchant marine] Ekonomika morskogo transporta. Izd.2., perer. i dop. Moskva, Transport, 1964.  
527 p. (MIRA 18:1)

GEKHTER, L.A.

Wavemeter-wavegraph with a rheostatic pickup. Vop. pld. no.  
12:80-83 '63. (MIRA 17-5)

GEKHTER, L.A.; ZAKURDAYEV, A.K.

Design of inductive pickups and measuring networks for them.  
Vop. gidr. no. 12:84-111 '63. (MIRA 17:5)

GONCHAROV, Petr Lazarevich, kand. sel'khoz. nauk; GEREPLYAR, S.Ya.,  
red.

[Lucerne in Irkutsk Province] Liutserna v Irkutskoi oblasti.  
Irkutsk, Vostochno-Sibirskoe knizhnoe izd-vo, 1965. 106 p.  
(MIRA 18:11)

1. Zaveduyushchiy otdelom selektsii i semenovodstva kormovykh  
kul'tur Tulunskoy selektsionnoy stantsii, Irkutsskaya ob-  
last' (for Goncharov).

GEKHTMAN, D. YA.

68-1-10/21

**AUTHOR:** Simachev, L.V., Peleshuk, M.I., Gekhtman, D.Ya.,  
Shpeyyer, N.A., Pryakhin, L.G. and Gerasimov, V.I.

**TITLE:** Comments on the Paper of R.Z. Lerner "On Changes in the  
Composition of the Coke Oven Department for a Considerable  
Increase in the Number of Coke Ovens in a Battery".  
(Otkliki na statyu R.Z. Lerner "Ob izmenenii komponovki  
koksovogo tsekha dlya znachitel'nogo uvelicheniya chisla  
pechey v batareye")

**PERIODICAL:** Koks i Khimiya, 1957, No.1, pp. 35 - 36 (USSR)

**ABSTRACT:** These relate to the paper published in Koks i Khimiya,  
1956, No.4. The authors agree with the proposals of R.Z.  
Lerner (batteries of 100 ovens) and consider that 4 batteries  
of the proposed type should be urgently designed.  
There is 1 table.

**ASSOCIATION:** Glavmekhanomontazh and Koksokhimmontazh.

**AVAILABLE:** Library of Congress

Card 1/1

GEKHTMAN, E. J. (Riga)

Second profession for the dentist's drill. Tekh.mol. 29 no.5:33  
'61. (MIRA 14:5)  
(Grinding machines)



GEKHTMAN, E.I.

Polishing drill. Mashinostroitel' no.9:21 S '62. (MIRA 15:9)  
(Grinding machines)

GEKHTMAN, E.I.; TARASOV, I., red.

[Polishing and milling machine for toolworks] Shlif-  
bormashina dlia instrumental'nykh i grevernoykh robot.  
Riga, Latviiiskii respublikanskii in-t nauchno-tekhn.  
informatsii i propagandy, 1963. 19 p. (MIRA 18:1)

MENDEL'SON, V.S.; GEKHTMAN, G.A.; KHRIZMAN, M.G.; ZEL'DIN, A.I.

Using spraying techniques in applying protective coatings.  
Mashinostroenie no.2:69-76 Mr-Ap '62. (MIRA 15:4)

1. Kiyevskiy zavod torgovogo mashinostroyeniya.  
(Plastic spraying)

KARBELASHVILI, L.A., prof.; GEKHTMAN, G.M., prof.; AKKERMAN, N.G.  
[translator]; ASATIANI, M.M., tekhred.

[Economic geography of the Georgian S.S.R.; textbook for the  
ninth grade of the secondary school] Ekonomicheskaya geogra-  
fiya Gruzinskoi SSR; uchebnik dlia IX klassa srednei shkoly.  
Izd.3., perer. Tbilisi, Gos.izd-vo uchebno-pedagog.lit-ry  
"TSOINA," 1960. 151 p. (MIRA 13:11)  
(Georgia--Economic geography)

GEKHTMAN, G.N., prof. [deceased]; DZHAVAKHISHVILI, A.H., prof.,  
zasl. deyatel' nauki, akademik; ATABECOV, T.K., prof.,  
red. [deceased]; ZARDALISHVILI, G.I., dots., red.; KIFIANI,  
Sh.Ya., dots., red.; KONDRATENKO, N.V., red. izd-va;  
DZHAPARIDZE, N.A., tekhn. red.

[Prominent geographers and explorers] Vydaiushchiesia geo-  
grafy i puteshostvenniki. Tbilisi, Izd-vo Akad. nauk Gru-  
zinskoi SSR, 1962. 306 p. (MIRA 15:11)

1. Akademiya nauk Gruzinskoy SSR (for Dzhavakhishvili).  
(Geographers) (Explorers)

GEKHTMAN, I.Sh., inzh.; PAVLOV, I.P., inzh.

Lowering the consumption of fiber in the production of grade 1  
printing paper. Bum. prom. 36 no.8:17-18 Ag '61. (MIRA 14:8)  
(Paper industry)

SHERUDA, S.D.; GEKHTMAN, F.A.

GAN-8 "Urozhai" mounted ammoniac and weed killer solution spraying machine. Trakt. i sel'khoz mash. 32 no.1:34 Ja '62. (MIRA 15:2)

1. Gosudarstvennoye spetsial'noye konstruktorskoye byuro po mashinam dlya khimicheskoy zashchity rasteniy.  
(Fertilizer spreaders) (Herbizides)

GEKHTMAN, M.A.

Standardization of units and parts of machinery. Zashch. rast.  
ot vred. i bol. 9 no.12:24 '64. (MIRA 18:4)

1. Nachal'nik sektora unifikatsii i normalizatsii Gosudarstven-  
nogo spetsial'nogo konstruktorskogo byuro L'vovskogo soveta  
narodnogo khozynystva.



L 12404-63

EWT(d)/FCC(w)/BDS AFFTC IJP(C)

ACCESSION NR: AP3001387

S/0020/63/150/004/0726/0729

54

AUTHOR: Gekhtman, M. M.

TITLE: The spectrum of a non-selfconjugate even order differential operator

SOURCE: AN SSSR. Doklady, v. 150, no. 4, 1963, 726-729

TOPIC TAGS: eigenvalue, differential operator, finite set, Fourier series

ABSTRACT: The author proved the theorem that the eigenvalues of an even order differential operator  $L$  can form only-finite sets if certain conditions are fulfilled. The author used Fourier series, the theory of functions and the Fredholm theory in his proof. "In conclusion, I take the opportunity to express my appreciation to Prof. M. A. Naymark and R. S. Ismagilov for valuable suggestions and discussion of the obtained results." Orig. art. has: 15 formulas.

ASSOCIATION: Moskovskiy gosudarstvennyy universitet im. M. V. Lomonosova (Moscow State University).

SUBMITTED: 03Jan63

DATE ACQ: 01Jul63

ENCL: 00

SUB CODE: 00

NO REF SOV: 001

OTHER: 000

Card 1/1

GEKHTMAN, M.M.

The limit amplitude principle. Dokl. AN SSSR 153 no.1:20-  
22 N '63. (MIRA 17:1)

1. Moskovskiy gosudarstvennyy universitet im. M.V. Lomonosova.  
Predstavleno akademikom L.S. Pontryaginym.

S/0055/64/000/001/0029/0036

ACCESSION NR: AP4011721

AUTHOR: Gekhtman, M. M.

TITLE: Spectrum of the non-self-adjoint Sturm-Liouville operator

SOURCE: Moscow. Universitet. Vestnik. Seriya 1. Matematika, mekhanika, <sup>158</sup>no. 1, 1964, 29-36

TOPIC TAGS: spectrum, Sturm Liouville operator, non self adjoint operator, self adjoint operator, complex valued function, Neumann series

ABSTRACT: Suppose an operator  $L$  is given in  $L^2(0, \infty)$ :

$$Ly \equiv -y'' + (q + ir)y, \quad y'(0) - \theta y(0) = 0. \quad (1)$$

Here  $q(x)$  and  $r(x)$  are real functions,  $\theta$  is a real number,  $\theta \neq \infty$ . It is known that if  $|r(x)| < c$ , then the spectrum of the operator  $L$  is situated in the strip  $|\tau| < c$  of the complex  $\lambda$ -plane ( $\lambda = \sigma + i\tau$ ). The author refines this fact; if  $r(x) \rightarrow 0$  as  $x \rightarrow \infty$ , then the spectrum of the operator  $L$  lies in the region  $|\tau| \leq K(\sigma)$ , where  $K(\sigma)$  is a nonnegative function satisfying the condition  $K(\sigma) \rightarrow 0$

Card 1/2

ACCESSION NR: AP4011721

as  $\sigma \rightarrow \infty$ . The function  $q(x)$  can be arbitrary. If  $p(x) = q(x) + ir(x)$  tends to zero as  $x \rightarrow \infty$ , one can clearly construct  $K(\sigma)$  from the function  $p(x)$ . Analogous assertions are also true for an operator  $L$  defined in  $L^2(-\infty, \infty)$ . "In conclusion I use this opportunity to express my deep gratitude to R. S. Ismagilov for his valuable advice and constant interest in this work." Orig. art. has: 57 formulas.

ASSOCIATION: Kafedra teorii funktsiy i funktsional'nogo analiza (Department of Theory of Functions and Functional Analysis)

SUBMITTED: 14Jun63

DATE ACQ: 14Feb64

ENCL: 00

SUB CODE: MM

NO REF SOV: 002

OTHER: 000

Card 2/2

GEKHTMAN, M. Ya.

Gekhtman, M. Ya. "Medical-sanitary consequences of the war and the occupation of the Moldavian SSR and ways of eliminating them", Trudy Kishinevsk. gos. med. in-ta, Vol. I, 1949, pp. 21-37.

SO: U-3261, 10 April 53 (Letopis 'Zhurnal 'nykh Statey No. 11, 1949)

ГЕКХТМАН, МИХАИЛ ЯКОВЛЕВИЧ

KUKIN, Nikolay Nikolayevich; GEKHTMAN, Mikhail Yakovlevich; LOPUSHANSKIY, V.K.

[Sketch of the development of the public health service in Moldavia]  
Ocherk razvitiia zdorvoookhraneniia v Moldavii. Kishinev, Gos. izd-vo  
Moldavii, 1956. 76 p. (MLRA 10:3)  
(MOLDAVIA--PUBLIC HEALTH)

SHCHERPKOVSKAYA, Ye.V., kandidat meditsinskikh nauk. (Khar'kov); ~~GEKHMAN~~  
M.Ye. (Khar'kov); VOLOVIK, S.S. (Khar'kov); LINKOVA, F.V. (Khar'kov);  
SOKOL'SKIY, S.L., kandidat meditsinskikh nauk. (Khar'kov); DUKHINA,  
B.S. (Khar'kov); MARKUS, L.M. (Khar'kov)

New effective method for the compound treatment of tabetic atrophy  
of the optic nerves. Vrach. delo no.1:89 Ja '57 (MLRA 10:4)

1. Ukrainskiy nauchno-issledovatel'skiy kozhno-venerologicheskiy  
institut.

(OPTIC NERVE--DISEASES) (NERVOUS SYSTEM--SYPHILIS)

GEKHTMAN, M.Ya., dotsent; SEDYKIN, K.G.

Improving public health planning. Sov.zdrav. 16 no.11:33-37 N '57.  
(MIRA 11:1)

1. Iz kafedry organizatsii zdravookhraneniya i istorii meditsiny  
Kishinevskogo meditsinskogo instituta (zav. - dotsent M.Ya.Gekhtman)  
(PUBLIC HEALTH  
in Russia, problems in improvement of planning (Rus))



GEKHTMAN, M.Ya.

[Twenty-first Congress of the CPSU and the prospects for developing public health in Moldavia] XXI s"ezd KPSS i perspektivy razvitiia zdravookhraneniia v Moldavskoi SSR. Kishinev, Gos.izd-vo "Kartia Moldoveniaska," 1959. 37 p. (MIRA 13:7)  
(MOLDAVIA--PUBLIC HEALTH)

SERGIYEV, P.G., prof.; RYAZANTSEVA, N.Ye.; SHLINOVA, Ye.V.; CHELYSHEVA, K.M.;  
REVENIOK, N.D.; KOZLOVSKAYA, L.A.; KOTSOFAE, V.A.; BORISOVA, L.S.;  
GEKHTMAN, M.Ya.; SHROYT, I.G.; LAPTEVA, V.N.

Active immunization of children against measles with vaccine "C"  
in an extensive epidemiological experiment. Zdravookhranenie 2 no.1:  
17-20 Ja-F '59. (MIRA 12:7)

1. Iz instituta virusologii im. D.I. Ivanovskogo AMN SSSR (direktor - P.N. Kosyakov), Moldavskogo instituta epidemiologii, mikrobiologii i gigiyeny (direktor - N.N. Yezhov) i Respublikanskoy sanitarno epidemiologicheskoy stantsii Moldavskoy SSR (glavnyy vrach - A.A. Koval'ov)
2. Deystvitel'nyy chlen AMN SSSR (for Sergiyev).

(MEASLES)

BARKMAN, E.M., prof. (Moskva); GEBHTMAN, M.Ya., dotsent; KANT, V.I., aspirant  
(Kishinev)

Seminars for the chief doctors of districts. Zdrav.Ros.Feder. 4  
no.2:30-33 P '60. (MIRA 13:5)  
(MOLDAVIA--PUBLIC HEALTH--STUDY AND TEACHING)

SHELYAKHOV, B.N.; GEKHTMAN, M.Ya.; BONDURYANSKIY, I.P.

Further research on the epidemiology of Botkin's disease in the  
Moldavian S.S.R. Trudy Kish.gos.med.inst. 11:71-86 '60.  
(MIRA 16:2)

1. Otdel epidemiologii Moldavskogo instituta epidemiologii, mikro-  
biologii i gigiyeny i kafedra organizatsii zdravookhraneniya  
Kishinevskogo gosudarstvennogo meditsinskogo instituta.  
(MOLDAVIA--HEPATITIS, INFECTIOUS)

DROBINSKIY, I.R.; GEKHTMAN, M.Ya.

Some problems in the prevention of Botkin's disease in Moldavia.  
Trudy Kish.gos.med.inst. 11:87-100 '60. (MIRA 16:2)

1. Kafedra infeksionnykh bolezney i kafedra organizatsii zdra-  
vookhraneniya Kishinevskogo gosudarstvennogo meditsinskogo  
instituta.

(MOLDAVIA—HEPATITIS, INFECTIOUS—PREVENTION)

GEKHTMAN, M.Ya., dots., zasl. vrach Moldavakoy SSR; SHOYNER, A.,  
red.; POLEVAYA, Ye., tekhn. red.

[Organization of workers' rest in the U.S.S.R.] Organizatsia  
otdykha trudiashchikhsia v SSSR. Kishinev, Gos. izd-vo  
"Kartia moldoveniaska," 1961. 27 p. (MIRA 15,3)  
(LABOR AND LABORING CLASSES)  
(HEALTH RESORTS, WATERING PLACES, ETC.)

GEKHTMAN, M.Ya.; KANT, V.I.

Status of and ways for the further development of the rural public health system in the Moldavian S.S.R. Zdravookhranenie 4 no. 2:3-8 My-Ap '61. (MIRA 14:4)

1. Iz kafedry organizatsii zdravookhraneniya i istorii meditsiny (zav. - dotsent M.Ya. Gekhtman) Kishinevskogo meditsinskogo instituta.

(MOLDAVIA—PUBLIC HEALTH, RURAL)

GEKHTMAN, M.Ya.; GOL'DBERG, I.D.

Statistics on the longevity of the inhabitants of the Moldavian  
S.S.R. Zdravookhranenie 4 no.4:28-34 J1-Ag '61. (MIRA 14:11)

1. Iz kafedry organizatsii zdravookhraneniya i istorii meditsiny  
(zav. - zasluzhenny vrach Moldavskoy SSR, dotsent M.Ya.Gekhtman)  
Kishinevskogo meditsinskogo instituta i Respublikanskoy  
klinicheskoy bol'nitsy (glavnyy vrach T.V.Moshnyaga).  
(MOLDAVIA---LONGEVITY---STATISTICS)



GEKHTMAN, M. Ya. (Kishinev)

Organization of medical service for rural areas of the Moldavian  
S.S.R. Sov. zdrav. 20 no.7:63-66 '61. (MIRA 15:1)

1. Iz kafedra organizatsii zdravookhraneniya i istorii meditsiny  
Kishinevskogo meditsinskogo instituta.  
(MOLDAVIA PUBLIC HEALTH, RURAL)

GEKHTMAN, M.Ya. (Kishinev)

Review of V.I.Pol'chenko's book "Planning of a network of  
hospitals in a rural district." Sovet. zdravookhr. 5:  
85-86'63 (MIRA 17:2)

~~G~~EKHTMAN, S.D., inzh.

Heat characteristics of various types of soaking pits. Trudy NTO  
chern. met. 20:418-430 '60. (MIRA 13:10)

1. TSentroenergochernmet.  
(Furnaces, Heating)

STUKALOV, M.I., inzhener.; ONISHKO, N.S., inzhener; GEKHTMAN, S.D., inzhener.

Liquid slag removal from soaking pits. Stal' 17 no. 2:169-173 P '57.  
(MIRA 10:3)

1. Zavod "Azovstal'" i Elektroenergochermet.  
(Rolling (Metalwork)--Equipment and supplies)