

NO REF SOV: 007

OTHER: 003

SUB CODE: EE

KL
Card 2/2

I 31041-65 FWT(1)/EEG(t)/EWA(h) Pa-5/Pob LIT(c) A)
ACCESSION NR: AP5002909 S/O109/65/010/001/0138/0146

AUTHOR: Buzanova, L. K.; Vasil'yev, A. M.; Gliberman, A. Y.;
Landsman, A. P. 3/8

TITLE: Photocells⁷⁵ with longitudinal photoelectric effect;

SOURCE: Radiotekhnika i elektronika, v. 10, no. 1, 1965, 138-146

TOPIC TAGS: photocell, photoelectric effect

ABSTRACT: The equation for potential difference across an infinite p-n junction set up by G. Lucovsky (J. Appl. Phys., 1960, 31, 6, 1088) is adapted, in the present article, to the case of a finite-size photocell. Boundary conditions for solving the problem are formulated with an allowance for that part of the p-n junction which is located under the contact. For not very high light intensities, the solution is presented as a small-parameter series. At variance with Lucovsky's assumptions, the longitudinal photo-emf is supposed to be small as

Card 1/2

L 31041-65

ACCESSION NR: AP5002909

compared with $AkT/q = 30-50$ mv, where A is the parameter of the current-voltage p-n-junction characteristic, k is the Boltzmann constant, T is temperature, and q is the electron charge. An equivalent circuit of the photocell is suggested, and conditions of independence between photo-emf's of both pairs of contacts are formulated. Experimental results are reported which were obtained with phosphorus-doped high-resistivity Si 5×6 -mm and 10×12 -mm cells illuminated by a 0.4-mm light spot. The reduced longitudinal sensitivity was 60-80 mv/mm-mw; reverse saturation current, 10^{-6} a/cm². The effect of the light spot position on the longitudinal photo-emf and photo-current is presented in 6 curves. Orig. art. has: 5 figures and 30 formulas.

ASSOCIATION: none

SUBMITTED: 27Sep63

ENCL: 00

SUB CODE: EM

NO REF SOV: 002

OTHER: 004

Card 2/2

GLIBERMAN, A.Ya., kand. tekhn. nauk; FROLOVA, G.F., kand. tekhn. nauk

EFFECT OF THE QUALITY OF THE TUNNEL CONTACT ON THE OPERATIONAL
CHARACTERISTICS OF A DIODE IN A CIRCULAR WAVELENGTH
ELECTROTECHNICAL DEVICE. D 104.

(EIK 19:1)

L 27774-66 EWA(h)/EWT(1)/EWT(m)/EWP(t)/EII LJE(c) JD

ACC NR: AP6012445

SOURCE CODE: UR/0292/65/000/012/0044/0047

13
B

AUTHOR: Gliberman, A. Ya. (Candidate of technical sciences); Fedoueyeva, O. P.
(Candidate of chemical sciences)

ORG: none

TITLE: Effect of the back-contact quality on the operating characteristics of
silicon photoconverters 25

SOURCE: ¹Elektrotehnika, no. 12, 1965, 44-47

TOPIC TAGS: photoconverter, photocell

ABSTRACT: The results are reported of an experimental study of the effect of temperature (within -70 +80C) on the short-circuit current, no-load voltage, resistance, and efficiency of p-Si devices. All parameters were calculated from light I-V characteristics. The characteristics were measured of photoconverters with two-types of back contact: (a) conventional, produced by chemical deposition of Ni and subsequent firing-on and (b) improved by boron-alloying of Si and then Ni plating and firing-on. With the improved back contact, the temperature coefficient of no-load voltage was 0.00236 v per 1C; the efficiency was higher than that of conventional devices and linearly increased with decreasing temperature; the short-circuit current linearly decreased with temperature (2.01×10^{-5} amp/cm² per 1C).

Card 1/2

UDC: 621.383.62-555.56/67/001/24

L 27774-66

ACC NR:AP6012445

Explanations of the accompanying physical processes are offered. Also, the improved devices exhibited better power and resistance ratios at strong illuminations than those of the conventional devices (2 and 16 vs. 1.3 and 12, respectively).
Orig. art. has: 7 figures, 1 formula, and 2 tables.

SUB CODE: 09 / SUBM DATE: none / ORIG REF: 002 / OTH REF: 004

Card 2/2

ACC NR: AP6023874

SOURCE CODE: UA/0109/00/011/007/1.05/1294

AUTHOR: Averbukh, T. G.; Buzanova, L. K.; Vasil'yev, A. M.; Glisanzov, A. Ya.

ORG: none

TITLE: Electric modulation of lateral photoemf

SOURCE: Radiotekhnika i elektronika, v. 11, no. 7, 1966, 1295-1294

TOPIC TAGS: photo emf, photoelectric effect, lateral photoelectric effect, *photoeffect*

ABSTRACT: So far the lateral-photoeffect cells have been investigated under the conditions of a constant signal; G. Wallmark (Proc. IRE, 1957, 45, 4, 474) mentioned a possibility of obtaining an alternating lateral photovoltage. The present article describes a theoretical and experimental investigation of a lateral-photoeffect cell modulated electrically by superposing an external alternating voltage on the p-n-junction voltage; weak illumination is assumed ($kT/q \approx 30-50$ mv). It is found that: (1) The experiments have shown that the parameter $\lambda = I_{sc}(\rho/W) / (kT/q)$ should not exceed 2.5--3 (for the photocells having $R = 20$ kohms and $A = 1.7$) in order to warrant the validity of the reported formulas; (2) The plot of light-spot coordinate vs. lateral modulated emf is linear, within 6%, when the spot moves away from the photocell center by a distance under 0.5 d; at 0.6 d, the nonlinearity is 10%; (3) The photocell sensitivity is proportional to the square of the photocell-

Card 1/2

UDC: 621.383.44:546.28

Card 2/2 *LS*

ACC NR: AP7002713

(A)

SOURCE CODE: UR/0115/66/000/012/0081/0082

AUTHOR: Berman, L. S.; Gliberman, A. Ya.; Kagan, M. B.; Landsman, A. P.

ORG: none

TITLE: Light-sensitive devices of silicon and gallium arsenide, based on barrier layer cells

SOURCE: Izmeritel'naya tekhnika, no. 12, 1966, 81-82

TOPIC TAGS: photovaricaps, photoelectric cell, silicon semiconductor, semiconductor device, gallium arsenide, arsenide, silicon compound, photosensitivity

ABSTRACT:

Semiconducting light-sensitive devices ("photovaricaps") based on barrier layer cells made of silicon and gallium arsenide single crystals and having low series resistance were developed and tested. The size of the photovaricaps ranged from 2 x 2 mm to 10 x 10 mm. The capacity for a unit of area for silicon photovaricaps without external voltage $C(0)$ was approximately 0.027 to 0.030 $\mu\text{F}/\text{cm}^2$, and for gallium arsenide photovaricaps 0.38 to 0.050 $\mu\text{F}/\text{cm}^2$. The photovaricaps can operate in a range of sonic and ultrasonic frequencies. The most important parameter of the photovaricaps is the photosensitivity coefficient characterizing the relative change of capacitance per unit of luminous flux ϕ . The capacitance temperature coefficient for

Card 1/2

UDC: 621.383

ACC NR: AP7002713

silicon photovaricaps in the photovoltaic mode was approximately 1.5×10^{-3} per degree, and for gallium arsenide photovaricaps 0.8×10^{-3} per degree. The photovaricaps were used for amplifying weak photocurrents and for indicating the displacement of weak light beams. Orig. art. has: 2 formulas and 2 figures.

SUB CODE: 20/ SUBM DATE: 06Oct65/ ORIG REF: 004/ OTH REF: 002/
ATD PRESS: 5113

Card 2/2

GLIBIN, V. F.

Nov 52

USSR/Medicine - Sterilization by UHF Electronics - Magnetrons in Sanitation

"Decontamination of Water by Ultrahigh-Frequency Currents," V.F. Glibin, Mil
Med Acad im S. M. Kirov

Gig i San, No 11, pp 41, 42

Description of expts in which uhf current was used to treat water contaminated
with B. coli. Results showed that pulse magnetrons operating at 3cm and 10cm
were more effective in destroying microorganisms than uhf oscillators operating
at 6m and 12m. Pulse power of the 10cm magnetron was 600-700kw and that of the
3cm magnetron, 30-35kw.

Source #264T31

GLIBIN, V.F.

Evaluation of new bactericidal lamps in disinfection of water. Gig. sanit., Moskva no.3:11-14 Mar 1953. (GIML 24:3)

1. Of the Military Medical Academy imeni S. M. Kirov.

YEL'TSOV. A.V.; EFROS. L.S.; GLIBIN. Ye.N.

Imidazole derivatives. Part 25: 4, 5-dimethoxy derivatives of
benzimidazolinone. Zhur.ob.khim. 31 no.5:1581-1585 My '61.
(MIRA 14:4)

1. Leningradskiy tekhnologicheskij institut imeni Lensoвета.
(Benz imidazolinone)

СЕРИЯ А 1. А

21 5250
15 3200

1564
1970-1971, 1972, 1973, 1974, 1975, 1976, 1977, 1978, 1979, 1980, 1981, 1982, 1983, 1984, 1985, 1986, 1987, 1988, 1989, 1990, 1991, 1992, 1993, 1994, 1995, 1996, 1997, 1998, 1999, 2000, 2001, 2002, 2003, 2004, 2005, 2006, 2007, 2008, 2009, 2010, 2011, 2012, 2013, 2014, 2015, 2016, 2017, 2018, 2019, 2020, 2021, 2022, 2023, 2024, 2025

AUTHOR: Kuznetsov, I. I., Pavlov, Ye. I., Mitina, Z. V.
TITLE: Selection of concrete mixtures with given boron content
PERIODICAL: Referativnyy zhurnal - Khimiya, no. 1, 1970, 116, Abstracts
WK 15 (Cb - "Struct. materials") 1, 1970, 29-31.

TEXT: Concrete mixtures were developed on the basis of Portland cement 400, quartz sand and crushed granite, granitic form. The boron-containing materials used were boron-containing class of the borates, salt with 70% borate ore of the inner deposit with 20% B. These boron materials were added to the binder and to the coarse and the fine aggregates. When used as aggregate the borate ore was molten. The melt was either cooled in water with formation of slag sand as fine aggregate or used in the form of glass pieces which served as crushed material. Concrete mixtures with 0.5 - 2.85% B and a strength of 100 - 500 kg/cm² after 10 days were obtained. The weight by volume of the concrete was 2.4 - 2.5 kg/liter. Autoclave treatment of mortars and concretes considerably increased the strength in the first solidification period. After 4 to 7 days, the strength of concrete 1/2

X

Selection of concrete mixtures

31504
0/0000/0000/0000/0000
BIC/0147

concrete with boron-containing elements [Abstracted from
complete translation] X

Part 2/4

L 15645-63

BIS

S/0286/63/000/002/0021/0021

44

ACCESSION NR: AP3000837

AUTHOR: Glibitskiy, M. M.; Epshteyn, I. I.

TITLE: Static current converter, Class H 02m; 21d sup 2, 12 sub 03, No. 152698

SOURCE: Byul. izobreteniy i tovarnykh znakov, no. 2, 1963, 21

TOPIC TAGS; static current converter, six-phase converter, converter

ABSTRACT: Static current converter, consisting of two six-phase converters with commutation capacitors, operating in the rectification-inversion mode with leading power factor; its distinguishing feature is that in order to improve the coefficient of utilization of the capacitors, the indicated six-phase converters are made in the form of "double star with equalizing reactor" and are connected on the AC side in parallel, and on the DC side they are connected in series by means of three busbars, one of which connects the rectifiers of phases A and X of the first six-phase converter to rectifiers of phases G' and X' of the second converter, while the second connects the phases B and Y of the first converter to the rectifiers of phases A' and X' of the second converter, and the third

Card 1/3 ✓

L 15645-63

ACCESSION NR: AP3000837

connects the rectifiers of phases C and Z of the first converter with rectifiers of the phases B' and Y' of the second converter. Orig. art. has: 1 figure (see Enclosure) [Abstractor's note: complete translation.]

ASSOCIATION: none

SUBMITTED: 01 Dec 61

DATE ACQ: 28 May 63

ENCL: 01

SUB CODE: EE

NO REF SOV: 000

OTHR: 000

2/12

Card

GLISA, El, candidat in stiinta economice; KONITA, M., candidat in stiinta
economie

Size of stockbreeding farms in the production agricultural
cooperatives in the Calarasi District. Probleme econ 13
no.1:108-115 Ja '65.

AISINA, V.; VIGDERGAUZ, I.; GLICHENKO, V.

Miners and lodging houses. Sov.shakht. 10 no.5:34-35 My '61.

(MIRA 14:9)

1. Vospitatel' obshchestvennoy shakht no.1-2, g. Makeyevka
Stalinskoy oblasti (for Aisina).

(Coal miners)

GLICHEV, A. V.

32997

Zametki Predsedatelya profkoma. (Mosk. aviats. In-T Im. Ordzhonikidze). Vestnik
Vyssh. Shkoly, 1949, No 9c 53-56

SO:Letopis'nykh Statey, Vol. 45, Moskva, 1949

GLICHEV, A.V., kand.ekonomicheskikh nauk, dotsent

Consolidated methods for calculating expenses for the
manufacture of new articles. Trudy MAI no.151:23-31 '62.
(MIRA 15:12)
(Airplanes--Cost of construction)

PHASE I BOOK EXPLOITATION

SOV/6558

Andrianov, D. P., M. Z. Gendel'man, A. V. Glichev, S. I. Didenko,
A. N. Zhuravlev, K. D. Zakharov, S. V. Moiseyev, L. M. Ol'shevets,
N. A. Orlov, P. G. Popov, S. A. Sarkisyan, D. E. Starik, A. N.
Ter-Markaryan, V. I. Tikhomirov, V. V. Chesnokov, Ye. I. Sherman,
and L. M. El'bert.

Organizatsiya, planirovaniye i ekonomika aviatsionnogo proizvodstva
(Organization, Planning, and Economics of the Aircraft Industry)
Moscow, Oborongiz, 1963. 694 p. Errata slip inserted. 5000 copies
printed.

Ed. (Title page): L. M. Ol'shevets, Candidate of Technical Sciences,
Docent and N. A. Orlov, Professor; Reviewer: A. A. Lapshin, Docent;
Ed.: V. F. Novatskiy, Candidate of Economical Sciences; Ed. of
Publishing House: F. G. Tubyanskaya; Tech. Ed.: I. I. Karpov;
Managing Ed.: L. A. Gil'berg.

PURPOSE: This textbook is intended for students of aircraft engineering
schools of higher education. It may also be useful to engineering
personnel of aircraft industry.

Card 1/16

Organization, Planning (Cont.)

SOV/6558

COVERAGE: The book presents a comprehensive review of problems connected with economics of the aircraft industry and with the organization and planning of aircraft production. Concrete problems of organization of work at aircraft enterprises are analyzed as they apply to various types of aircraft plants, e.g., aircraft construction plants, engine manufacturing plants, instrument-making plants. Specific features of the organization and planning of production in industrial and experimental plants are outlined. The Introduction and Ch. I, II, and XI were written by Professor N. A. Orlov; Ch. III by Docent S. V. Moiseyev, Cand. of Techn. Sciences; Ch. IV and XIX by Docent S. A. Sarkisyan, Cand. of Econ. Sciences; Ch. V and X by Docent D. E. Starik, Cand. of Techn. Sciences; Ch. VI by Docent P. G. Popov; Ch. VII by Docents Ye. I. Sherman, Cand. of Econ. Sciences, and K. D. Zakharov, Cand. of Techn. Sciences; Ch. VIII by Docent M. Z. Gendel'man, Cand. of Techn. Sciences, Docent A. V. Glichev, Cand. of Economic Sciences, and Professor A. N. Ter-Markaryan, Cand. of Techn. Sciences; Ch. IX by Professor A. N. Zhuravlev, Cand. of Techn. Sciences; Ch. XII and XIII by Professor D. P. Andrianov, Doctor of Econ. Sciences; Ch. XIV by Professor V. I. Tikhomirov, Cand. of

Card 2/16

ACCESSION NR: AT4031061

S/2535/63/000/154/0020/0025

AUTHOR: Glichev, A.V. (Candidate of Economics Science)

TITLE: A method for consolidating calculation of expenditures in the use of transport aircraft in its design stage

SOURCE: Moscow. Aviatsionnyy institut. Trudy*, no.154, 1963. Ekonomicheskaya effektivnost' aviatsionnoy tekhniki (economic efficiency in aeronautical engineering), 20-25

TOPIC TAGS: air transport, expenditure, mass transport, amortization, turbojet aircraft, maintenance

ABSTRACT: The author derived formulas for economic equations, and presented tables which include the amortization, the cost of fuel and lubricant materials, maintenance, salaries, etc. for reciprocating engines, turbojets, and turboprops capable of speeds in excess and below 600 km/hr. Orig. art. has: 10 formulas and 2 tables.

ASSOCIATION: Moscow Aviatsionnyy institut (Moscow Institute of Aviation)

SUBMITTED: 00

DATE ACQ: 16Apr64

ENCL: 00

Card 1/2

ACC NR: AP6034909

(A)

SOURCE CODE: UR/0422/66/000/008/0029/0033

AUTHOR: Glichev, A. V. (Doctor of economic sciences)

ORG: none

TITLE: Criteria for complex evaluation of quality of manufactured products

SOURCE: Standarty i kachestvo, no. 8, 1966, 29-33

TOPIC TAGS: quality control, mathematic analysis

ABSTRACT: In planning a manufactured product and in evaluating its quality, various criteria are available, but many are in conflict with each other. For instance, low cost may preclude obtaining a high level of performance and durability. On one hand, for achievement of high quality, a prolonged and costly period of development often is needed; on the other hand, the product, once successfully manufactured, may be in mass production for a period of time and thus require a relatively low expenditure in the long run. Under the optimal level of production quality a compromise must be understood between quality and cost. The author suggests an expression for this compromise

$$K \Leftrightarrow \frac{Q_{\Sigma}}{B_{\Sigma}} \rightarrow \max, \quad (1)$$

where Q_{Σ} is the total efficiency of all products during their life and B_{Σ} is the sum

ACC NR: AF6034909

of all expenditures of the state economy. Efficiency must be interpreted in each case individually. For instance, for tires, it is the mileage (under specified conditions of use); for means of transport, it is the amount of freight delivered, etc. By using Eq. (1), the author schematically establishes the relationship for K in which the numerator is the sum of the efficiency times the yearly output, the summation extended over all products and organizations using the products; and, the denominator is the total expenditure. Orig. art. has: 1 figure and 2 equations.

SUB CODE: 05/ SUBM DATE: none/ ORIG REF: 003

Card 2/2

CHIGIC, Vladimir, dipl. inž.

Analytic methods of modeling nonstationary heat transfer
in heat exchangers and steam generators. Automated 6. no. 61
470-055 (1974).

1. Research and Development Center for Heat Engineering and
Nuclear Engineering, Sarajevo-Stup.

GLICIC, Vukasin

Craniocerebral injuries and early complications treated at the surgical ward in Krusevec during 1945-54. Srpski arb. celok. lek. 84 no. 7-8:863-871 July-Aug 56.

1. Hirurske odeljenje Opste bolnice u Krusevcu. Sef: prim. dr. Svetozar Nikolajevic.

(BRAIN, wounds and injuries,
surg., hosp. report (Ser))

YUGOSLAVIA

GLIBJIC, Vukasin, Docent Dr; First surgical Clinic of Medical Faculty in Belgrade (1. Hirurška Klinika Medicinske Fakulteta u Beogradu, Beod (Pravnik)) Prof Dr B. KOSTANOVIC, Belgrade.

"Current Trends in Surgical Treatment of Arterial embolism of Extremities."

Belgrade, Medicinski Glasnik, Vol 17, No 6-7, Jun-Jul 68: pp 231-237.

Abstract [German summary modified]: Discussion of differential diagnosis and surgical respectively medical treatment of arterial thromboembolic diseases. In general the surgical method is preferable, as medical treatment often has to be followed by surgery anyway under less favorable circumstances than would have been the case if surgery had been done earlier. A number of brief case reports illustrate these contentions. Four arteriograms, oscillogram, 2 photographs of emboli; 21 Western and 5 Yugoslav references.

1/1

TUJANOVIC

TUJANOVIC, Miroslav, and MICHALIC, Zilva, Most Surgical Clinic (Clinic for
Vascular), Faculty of Medicine (Josif Stipanovitch), University of Sarajevo,
Sarajevo, Bosnia; MICHALIC, Zilva, Prof. Dr. Zilva, Clinic Director
(Sarajevo).

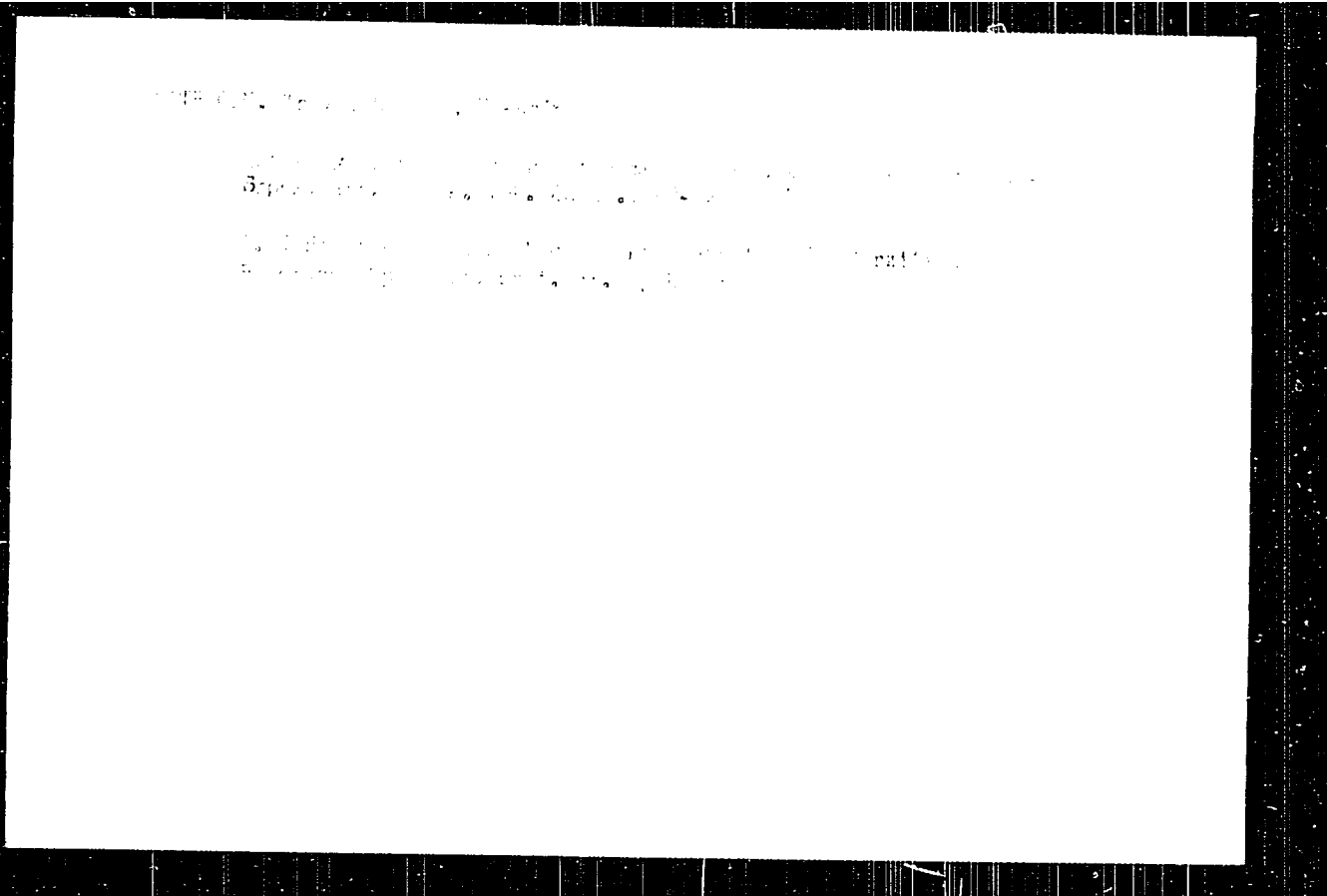
"The Diagnosis and Treatment of Arterial Lesions Accompanied by a Large
Hematoma."

Sarajevo, Medicinski List za Bosnu i Hercegovinu, Vol. 41, No. 6, June 1978,
pp. 522-524.

Abstract: [Authors' German summary translation] The authors describe six
cases of arterial lesions, four of A. femoralis, one of A. brachialis,
and one of A. tib. anterior., all accompanied by a large hematoma. The
cases were reported two to 15 days after onset. The case ended in ampu-
tation in two cases, transplantation in one, and ligation
in another. The limb was saved in each case. The suggestion by the
authors is that urgent surgical intervention is in order in such cases
because of poor results from delayed operations and of the danger from
secondary bleeding, thrombosis, embolus, and infection of the hematoma.

Three photographs, four recent Western references.

1/1



GLICIC, Vukasin; TASIC, Dobrivoje

Fatal hemorrhage after splenoportography. Med. pregl., 18 no. 5:
189-191 ' 65.

1. I hirurska klinika Medicinskog fakulteta Univerziteta u
Beogradu (Upravnik: Prof. dr. Ljubomir Rasovic).

GLIDMAN, S.

On some geometrical properties of normal matrices. *Bul. Ac. Pol. Mat.*
9 no.9:625-631 '61.

1. Department of Mathematics, Faculty of Geodesics and Cartography,
Technical University, Warsaw. Presented by A. Mostowski.

... ..

... ..

... ..

KONWIT, I. I.; PERLSON, A.; BILIMVIL, B. H.; PARSONS, J. G.;
GLIZIG, L. A.

aprimycin in therapy of acute and chronic hepatitis. II. Re-
sults of prolonged therapy. Gastroenterology 67: 733-738 (1974)

1. Internat. J. Hepatol. 10: 1-10 (1974) (English transl. in
Bull. World Health Organ. 50: 1-10 (1974)).

The following information was obtained from a review of the records of the
Department of Defense, Office of the Inspector General, and the
Department of Defense, Office of the Inspector General, and the
Department of Defense, Office of the Inspector General.

DAVIDOVIC, S., docent dr.; GLIDZIC, V., asistent dr.

Biliary peritonitis without perforation of the bile ducts. *Voj. san. pregl.*, Beogr. 11 no.11-12:559-565 Nov-Dec 54.

1. I. Hirurška klinika Medicinskog fakulteta u Beogradu.
(PERITONITIS
biliary, without perf. of bile ducts)

GENCIC, Milivoje; GLIDZIC, Vukasin

Arterial embolism. Srpski arh. celok. lek. 83 no.12:1404-1420
Dec 55.

1. I Hirurska klinika Medicinskog fakulteta u Beogradu. Upravnik:
prof. dr. Milivoje Kostic.
(EMBOLISM,
arterial. (Ser))

GLIDZIC, Vukasin

Surgical treatment of skin injuries. Srpski arh. celok.
lek. 84 no.1:42-52 Jan 56.

1. Hirusko odeljenje Opste bolnice u Krusevcu. Sef; prim. dr.
Svetozar Nikolajevic.

(SKIN, wds. & inj.

plastic surg. (Ser))

(WOUNDS AND INJURIES,

skin, plastic surg. (Ser))

KOSANOVIC, B.; GLIDZIC, V.; OBRADOVIC, D.

Clinical manifestations & therapy of diaphragmatic hernia. Acta chir.
ingosl. 4 no.3:259-265 1957.

I. I Hirurska klinika Medicinskog fakulteta u Beogradu (Upravnik prof.
dr. B. Kosanovic)

(HERNIA, DIAPHRAGMATIC,
manifest. & surg. (Ser))

GLIDZIC, V.

Contusion injuries of liver and spleen. Med. glasn. 11 no.1:
21-25 Jan 57.

1. Hirursko odeljenje Opste bolnice u Krusevcu. Sof; prim. dr.
S. Nikolajevic.

(LIVER, wds. & inj.
contusion inj. (Ser))

(SPLEEN, wds. & inj.
same)

GLIDZIC, V.

Treatment of stiff elbow. Srpski arh. celok. 1sk. 85 no.2:
167-179 Feb 57.

1. Hirursko odeljenje Opste bolnice u Krusevcu. Sef; primarij dr.
Svetomir Nikolajevic.

(ELBOW, dis.

stiff elbow, management (Ser))

GLIDZIC, V.; DORDEVIC, R.; GRIL, D.; JOSIPOVIC, Z.

2 cases of injuries of the rectum caused by acts of sodomy. Acta chir. iugosl. 7(8) no.3:258-262 '60.

1. I. Hirurska klinika medicinskog fakulteta u Beogradu (Upravnik prof. dr B.Kosanovic) Hirursko odelenje Opste bolnice u Cacku (Sef dr D.Gril) i Institut za sudsku medicinu Medicinskog fakulteta u Beogradu (Upravnik prof. dr J.Bogicevic)

(RECTUM wds & inj)

(SEX DEVIATION)

DAVIDOVIC, Solomon; GLIDZIC, Vukasin; TASIC, Dobrivoje; BANKOVIC, Stanoje

A case of ileus caused by a biliary calculus. Srpski arh. celok.
lek. 88 no.3:345-349 Mr '60.

1. I Hirurska klinika Medicinskog fakulteta Univerziteta u Beogradu.
Upravnik: prof. dr Bogdan Kosanovic, Interna klinika A Medicinskog
fakulteta Univerziteta u Beogradu. Upravnik: prof. dr Branislav
Stanojevic.

(INTESTINAL OBSTRUCTION etiol)
(CHOLELITHIASIS compl)

GLIDZIC, V.

A giant tumor of the adrenal gland with a clinical picture simulating
Achara-Thiers syndrome. Acta chir. Jugosl. 8 no.1:79-84 '61.

1. I Hirurška klinika Medicinskog fakulteta u Beogradu (Upravnik
Prof. dr B.Kosanovic).
(ADRENAL GLAND neopl)

GLIDZIC, V.

Role of angiography in the diagnosis and therapy of chronic obliterative arteritis of the leg. Acta chir. Jugosl. 8 no.4:350-359 '61.

1. I Hirurska klinika Medicinskog fakulteta u Beogradu (Upravnik prof. dr B. Kosanovic).

(VASCULAR DISEASES PERIPHERAL radiog) (ANGIOGRAPHY)

DAVIDOVIC, S., prof., dr.; GLIDZIC, V., dr.; LITRICIN, T., doc., dr.

Injuries of the thoracic cage. Voj.san.pregl. 18 no.2:152-156 P '61.

1. Medicinski fakultet u Beogradu. I hirurska klinika.

(THORAX wds & inj)

LITRICIN, Triva; GLIDZIC, Vukasin

Dissecting aneurysm of the superficial femoral artery. Srpski arh.
celok. lek. 89 no.4:495-499 Ap '61.

I. I hirurska klinika Medicinskog fakulteta Univerziteta u Beogradu.
Upravnik: prof. dr Bogdan Kosanovic.

(FEMORAL ARTERY dis) (ANEURYSM case reports)

GLIDZIC, V.; SOTIROVIC, R.

A case of giant hydronephrosis. Acta chir. iugosl. 9 no.3/4:283-287 '62.

1. I hirurska klinika Medicinskoj fakulteta u Beogradu (Upravnik prof. dr B. Kosanovic).

(NO SUBJECT HEADINGS)

5

LITRICIN, T., doc. dr.; GLIDZIC, V., dr.

Transplantation of fresh veins in arterial diseases. Med. arh. 16
no.3:17-23 My-Je '62.

1. I hirurska klinika Medicinskog fakulteta u Beogradu (Upravnik:
prof. dr B. Kosanovic).
(VEINS transpl) (ARTERIES surg)

GLIDZIC, V.

A tumor as the cause of intestinal invagination. Acta chir.
Iugosl. 10 no.2:157-162 '63.

1. I Hirurska klinika Medicinskog fakulteta u Beogradu
(Upravnik prof. dr B. Kosanovic).
(INTUSSUSCEPTION) (SARCOMA, RETICULUM CELL)
(POLYPI) (INTESTINAL NEOPLASMS)
(SURGERY, OPERATIVE)

S

YUGOSLAVIA

GLIBSEIC, Dr V.; KRAJINOVIC, Dr S.; and RADOJEVIC, Dr R., First Surgical Clinic (i Hirurška Klinika) and Epidemiological Institute (Epidemiološki Institut), both in the Faculty of Medicine (Medicinski Fakultet), Belgrade.

"ABO Blood Groups and Stomach Tumors."

Belgrade, Narodno zdravlje, Vol 19, No 6, 1963, pp 201-203.

Abstract: [Authors' Serbo-Croatian summary] A comparison of the frequency of various blood groups of the ABO system in 244 patients suffering from cancer of the stomach with a control group of 5624 other patients originating in the same area showed that there was a statistically significant increase in the number of patients with blood group A and a simultaneous decline in the number of patients with blood group O. A statistically significant difference was not evident in an examination of the differences in the proportions of all groups as a whole, suggesting a need for further comparisons with more material so as to obtain significant results under the most severe criteria.

Twenty-six references (24 Western, two Yugoslav).

1/1

GLIDZIC, Vukasin

Intestinal suction with the Miller-Abbott tube, Srpski arh.
celok. lek. 91 no.4:399-409 Ap '63.

I. I hirurska klinika Medicinskog fakulteta Univerziteta u
Beogradu Upravnik: prof. dr Bogdan Kosanovic.
(CATHETERIZATION) (INTESTINES)
(ABDOMEN) (SURGERY, OPERATIVE)

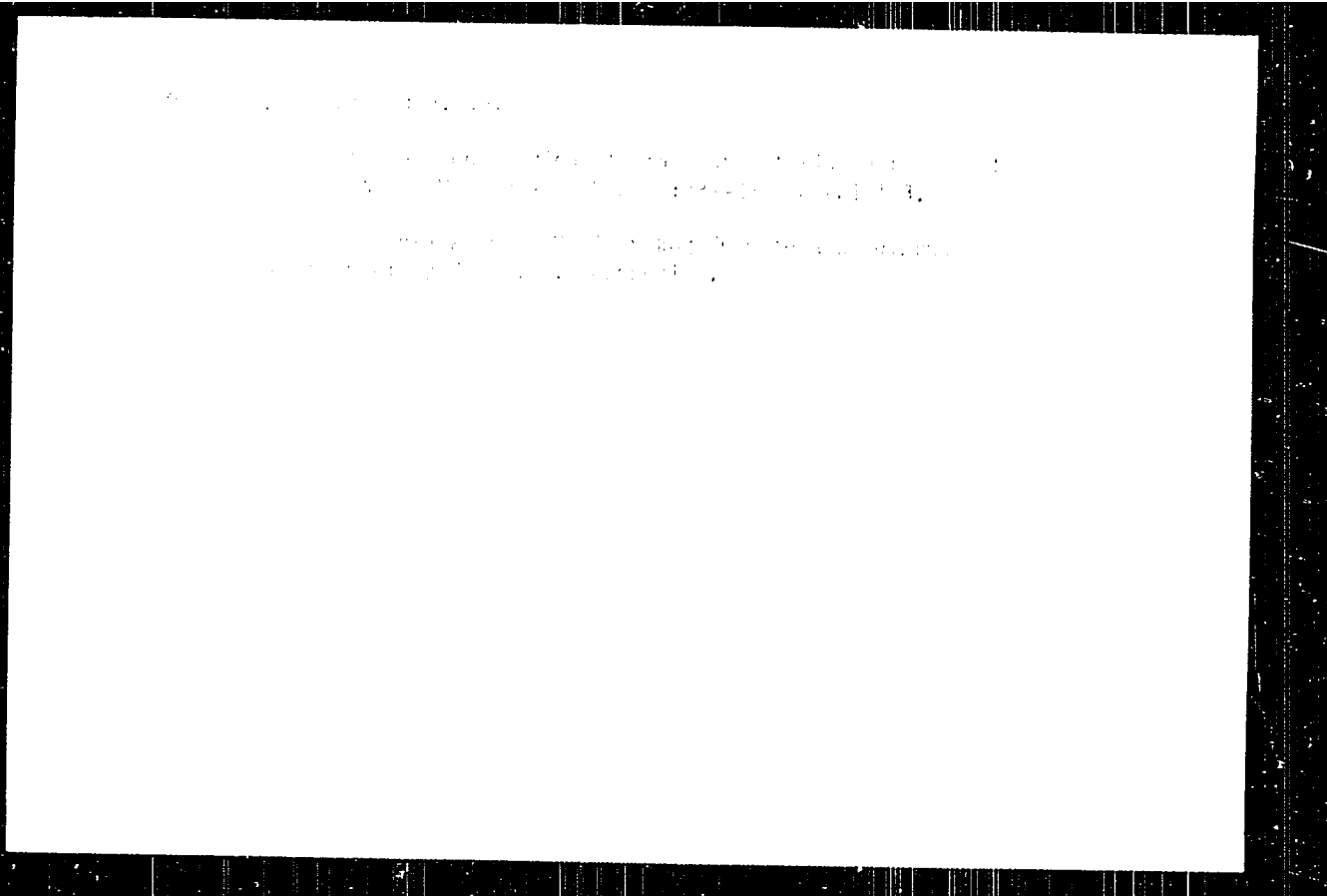
5

GLIDZIC, Vukasin; LITVIN, Triva

Diagnosis and therapy of arterial lesions associated with
giant hematomas. Srpski arh. celok. lek. 91 no.6:599-604
J6'63.

1. I hirarska Medicinskeg Fakulteta Univerziteta u Beogradu.
Upravnik: prof. dr. Bosnar Kasanovic.

*

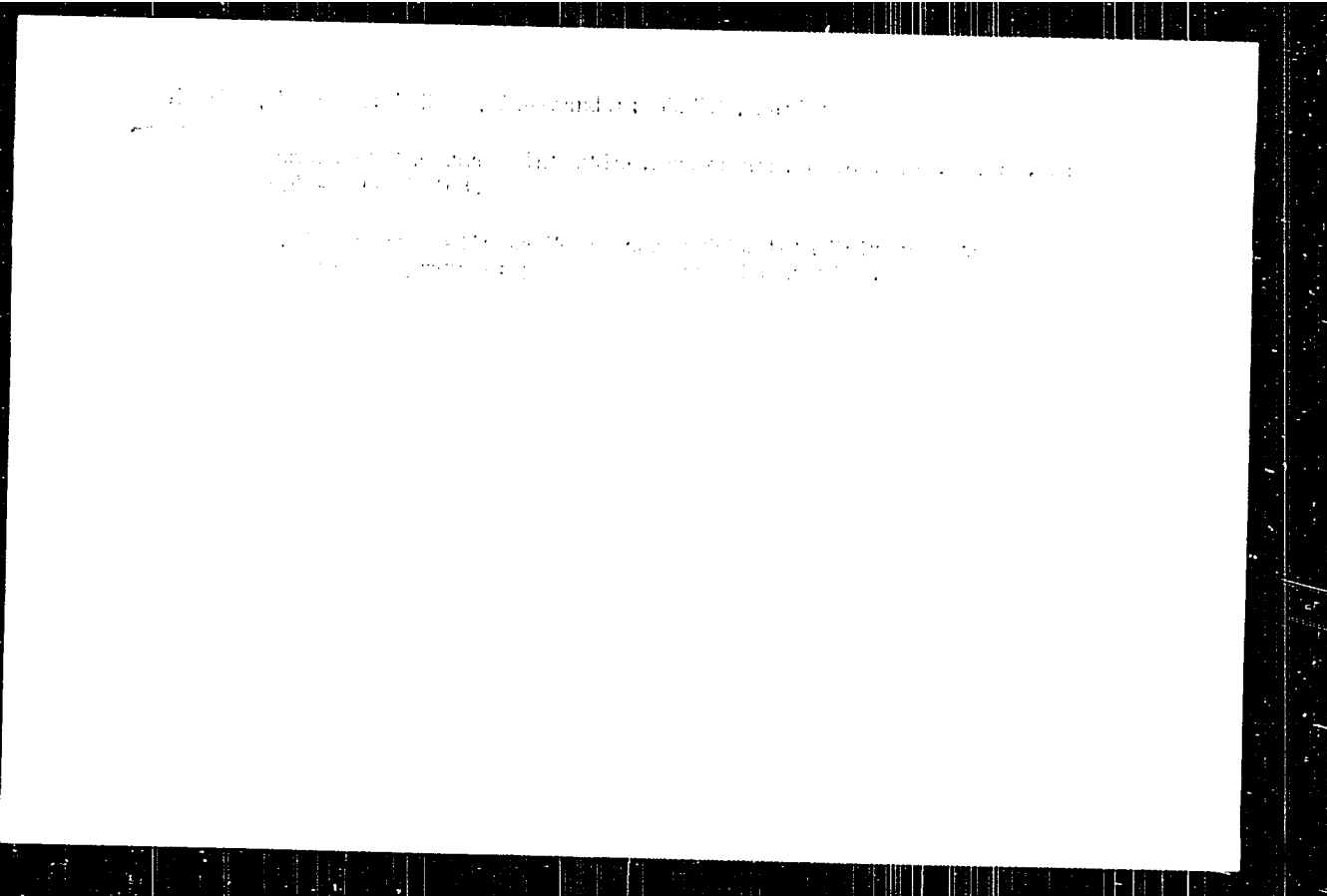


GLIDZIC, Vukasin

The syndrome of pseudo-acute abdomen in malignant tumors.
Srpski arch. celok. lek. 91 no.11:1055-1058 N°63

1. I hirurska klinika Medicinskog fakulteta Univerziteta u
Beogradu; upravnik: prof.dr. Bogdan Kosanovic.

4-



1. The following information is being provided to you:

1. The following information is being provided to you:

1. The following information is being provided to you:

YUGOSLAVIA

BUKUROV, Stanislav; GLISIC, Vukasin; STEFANOVIC, Branislav; and NAUMOVIC, Dragoslava, First Surgical Clinic of Medical Faculty of the University (I Kirurska Klinika Medicinskog Fakulteta Univerziteta); Head (Upravnik) Prof Dr Ljebomir RASOVIC, Belgrade

"Immediate Humoral Changes During Shock"

Belgrade, Srpski Arhiv za Celokupno Lekarstvo, Vol 94, No 4, Apr 66; pp 307-322

Abstract: [German summary modified] Data obtained during close monitoring of 16 patients before, during and after major operations. Diagnosis, 17-keto and 17-hydroxy steroids, creatinine clearance, serum proteins, blood urea nitrogen, serum potassium sodium and chloride and alkaline reserve. The changes are tabulated and discussed, with suggestions about measures which may speed recovery and prevent drawn-out convalescence. 10 tables, 1 Soviet, 7 Western references. Manuscript received 15 Dec 65.

1/1

YUGOSLAVIA

SECRET

1. The following information was obtained from a source who has provided reliable information in the past.

2. The source has provided reliable information in the past.

3. The source has provided reliable information in the past.

4. The source has provided reliable information in the past.

COUNTRY : YUGOSLAVIA
CATEGORY : Forestry, Ecology, Zoology.
ABST. JOUR. : Znanst. No. 11 1959, No. 41171
AUTHOR : Jilim, Gordana
TITLE : Natural Regeneration of Linus strobus L. and Quercus
laevis Murr.
ORIG. JOUR. : Bot. Zveznik, 1957, 21, No. 2, 112
ABST. CONT. : Reports are given on the natural regeneration of L.
strobus and Q. laevis in the Sava River basin
(Slovenia) at 550 m above sea level. An abundant young
growth of pine is observed at the age of 2-6 years,
and is fully developed because of the heavy shelter.
The young growth of oak, which reaches an age of 11
years, has not yet been observed.

Gen. D: 111

BORDOCKI, Marko; GLIGIC, Ana; LEVI, Eva; BOSKOVIC, Bidoslav,
NIKOLIC, Mihajlo; PERISIC, Zivadin; STIVAKOVIC, Vojislav;
VUCKOVIC, Dragan

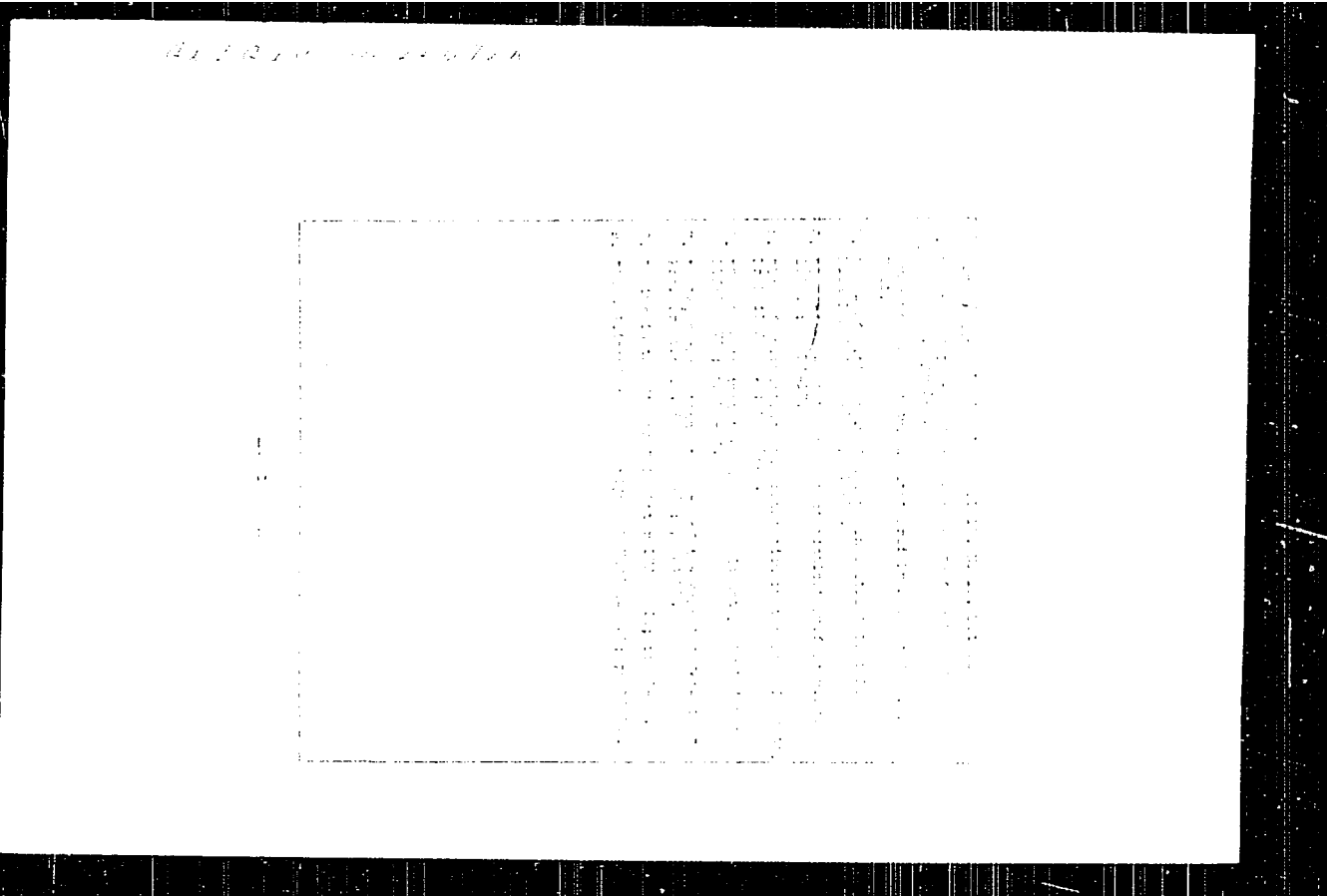
Postvaccinal antibodies in anti-smallpox protection. Vojnosanit.
pregl. 20 no.6 346-350 Jo 1973.

1. Zavod za zdravstvenu zastitu NR Srbije u Beogradu,
Medicinski fakultet u Beogradu, Klinika za infektivne bolesti.
(VACCINIA) (VACCINATION) (ANTIBODIES)

GLIGIC, M.

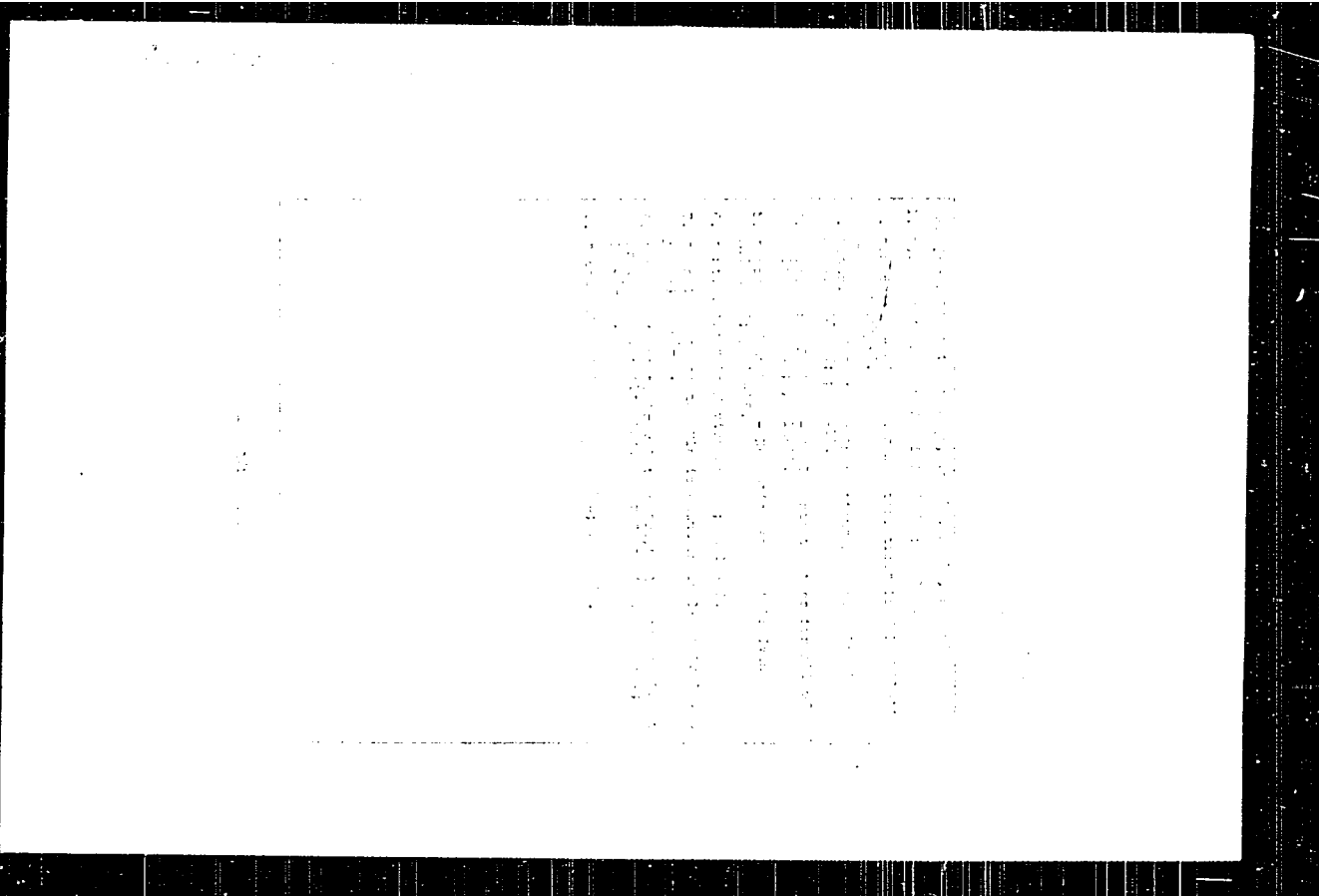
105 years of hydrobiological research in Bosnia and Herzegovina. p. 7.
(ACTA ICHTHYOLOGICA, Vol. 2, no. 5/6, 1956, Yugoslavia)

SC: Monthly List of East European Accessions (L.A.L) IC, Vol. 6, no. 7, July 1957, Uncl.



SECRET

[Faint, illegible text within a rectangular border]



GLIGIC, Milutin O.

Contribution to the knowledge of the genus *Dolomyia* Mehring from the central mountains of the People's Republic of Bosnia and Hercegovina. Glas Prir muz B 14:263-297 '59.

GLIGIC, Vojin

Carbon dioxide as an ecologic factor. *Ist. sci. nat. SAN* 25 no.7:
148-154 '59. (EEAI 9:12)
(Carbon dioxide) (Ecology)

GLIGIC, V.

Carbon dioxide as an ecologic factor. Glas Prirodni SAMU 241 no.
13:93-107 '60.

GLIGOR, D.

Shooting with retardation of milliseconds. p. 7.
(TEHNICA NOUA. ROMANIA. Vol. 3, no. 57, July 1956.)

SO: Monthly List of East European Accessions (MEAL) LC, Vol. 6, no. 7, July 1957. Uncl.

MIRON, Radu, conf. univ.; NEGREI, Veronica; MANOLIU, Lucia; POLIZU, Lucia;
VISA, Eugen; HAIVAS, M.; GLIGOR, I.; FUCHS, I.; ZOICAN, Voicu;
BAGHINA, V., prof.; HADIRCA-BREAZA, I.; IVADESCU-TIRGOVISTE, C.;
NEGREA, M.; SPIRIDON, I.; SZABO-PLOIESTI, T.; GRIGORE-PLOIESTI, I.,
prof.; BAZACOV, Gh., prof.; PAUNESCU, Al.; MORARU, I.; SAHAGIA, C.;
UDREA, V., prof. (Galati); NIMITAN, I. (Suceava)

Observations on the Analytic Geometry Manual for the 11th grade.
Gaz mat fiz 15 no.6:298-321 Je '63.

1. Societatea de Stiinte Matematice si Fizice, Filiala Iasi (for Miron). 2. Societatea de Stiinte Matematice si Fizice, Filiala Craiova (for Negrei, Manoliu, Polizu). 3. Societatea de Stiinte Matematice si Fizice, Filiala Timiscara (for Visa, Haivas, Gligor, Fuchs). 4. Societatea de Stiinte Matematice si Fizice, Subfiliala Petroseni (for Zoican). 5. Societatea de Stiinte Matematice si Fizice, Filiala Ploiesti (for Baghina, Hadirca-Breaza, Ivarescu-Tirgoviste, Negrea, Spiridon, Szabo-Ploiesti, Grigore-Ploiesti). 6. Societatea de Stiinte Matematice si Fizice, Subfiliala Tg. Severin (for Bazacov, Paunescu, Moraru, Sahagia).

Country : Rumania J
Subject : Soil Science, Physical and Chemical Properties
Doc. No. : 58983
Author : Gligor, S.
Title : A New Method of Determining Soil Water Dimensions and Volume
Mag. Pub. : Probl. agric., 1956, 2, No. 11, 71-81

Abstract : The capillary constant for water at 20° is expressed, according to Thuren, by the equation $H=14.82/r$, where H is the vertical height to which the water rises in the capillaries and r is the radius of the capillary. If water in sand rises at 20° to a height of 500 mm, then $r=14.82/500=0.03$ mm. Soil samples 5 cm in thickness were placed on the surface of a sand layer 500 mm thick. Water from 0.03 mm sand pores passes only into the soil sample pores of 0.03 mm.

Page : 1/5

Country :
Category :
Ref. No. :
Title :
Instit. :
Site :

5333

Ref. No. :

Abstract : and loss. The volume of pores $\leq 0.03 \mu\text{m}$ is determined by driving out the water which has been absorbed by the soil sample. A device consisting of a metal utensil measuring 6 x 21 cm was tested. On the bottom of the utensil, 6 cylinders were placed, filled with sand of varying sizes: 0.5-1.0, 0.25 - 0.5, 0.15 - 0.25, 0.10 - 0.15, 0.05 - 0.10, and with clay. The substratum pore sizes were respectively ≤ 1.135 , 0.075, 0.050, 0.033, 0.015 and 0.010 μm . The height of the cylinders was 120, 200, 300, 500, 1000 and 1500 μm respectively. The

Page: 2/5

1-82

Country :
Category :

J

Inst. Code :

1988

Author :
Institute :
Title :

Orig. No. :

Abstract : water level in the utensil was kept constant. The soil samples were placed with a Nekrasov bore into cylinders 5 cm in diameter, 2.1 cm in height and with a total volume of 48 ml. Altogether, there were 14 samples. The soil samples were dried for 24 hours. Then, two at a time were placed in each column, and two directly into the water at the bottom of the utensil. In 3 days, when the soil samples became moistened and their weight had become stable, they were weighed and

Card: 3/5

Country : J
Category :
Doc. No. : 51583
Index :
Instit. :
Site :

Ref. No. :

Abstract : dried in the drying cabinet for 4-5 hours at 104°C. They were then cooled and brought to a constant weight. The difference between the first and second weights equals the weight of the water absorbed by the soil samples and corresponds to the volume of correspondingly sized pores. Samples of these determinations are given. This method is more accurate than the vacuum calorimetric one. It is more reliable and requires less time for the determination, while the cost of the device itself is

Code: 4/5

J-23

Country :
Category :
Orig. Descr. :
Author :
Instit. :
Title :

Orig. Pub. :

J

21923

Abstract : one twentieth that of the instrument used in the
other method. --K.I. Isachenko

Serial 5/5

SILAS, G.; KLEFF, H.; GLIGOR, T.

Some properties of some plane motions. Bul St ul Tehn Tim
no. 1:30-42 Ja-Je '68.

SILVA, G. L.; FARNELL, H.; GOSWAMI, P.; BRINER, G.; HAYOR, T.

Vibropersensor for driving elements into the ground. 1961. 30
SI Tech Rep 7-60-1, 301-329. 112p. 161.

GLIGOR, V.

RUMANIA/Farm Animals. General Problems. Q

Abs Jour: Ref Zhur-Biol., No 4, 1958, 16719.

Author : Gligor V., Lunca N.

Inst : A New Orientation in the Organization of the
Artificial Insemination of Farm Animals (Novaya
oriyentatsiya v organizatsii iskusstvennogo
osemeneniya sel'skokhozyaystvennykh zhivotnykh

Orig Pub: Probl. zootehn., 1957, No 5, 5-12.

Abstract: In 1956, in Rumania 1,446 stations of artificial
insemination were in operation and 1,300,000 sheep
were inseminated. On the average, 87 percent of
fertilizations were achieved. The artificial
inseminations of cows were unsatisfactorily or-
ganized. By the semen of one sire, only 100-150
cows were inseminated. In order to improve the

Card : 1/2

RUMANIA/Farm Animals. Swine. Q-2

Abs Jour: Ref Zhur - Biol., No. 22, 1958, 101158

Author : Rusu, Gh., Gligor, V., Popovici, F., Popovici, V.

Inst : Rushetsu Experiment Station

Title : Experimental Data on Bacon Fattening of
Rumanian Meat Swine.

Orig Pub: Probl. zootehn. si veterin., 1957, No. 9, 19-29

Abstract: At the Rushetsu Experiment Station, a Rumanian pig species which attains a weight of 92 kg within 180 days was bred for bacon. The weight of its ham-producing parts amounts to 25 percent of the total (in English bacon breeds it amounts to 25.5 percent). The lard layer of dressed halves fluctuates between 2.9 cm. (on the back part) and 4.4 cm (on the neck).

Card 1/2

17

ROMANIA

GLIEN, V., Prof, Dr, Director of the Zootechnical Research Institute [Institutul de Cercetari Zootehnice].

"The Utilization of Imported Swine Varieties and Their Use to Improve Domestic Material."

Bucharest, Anvista de Zootehnie si Medicina Veterinara, Vol 16, No 9, Sep 66, pp 15-24.

Abstract: After a brief historical survey of pig breeding activity in Romania, the author examines the measures being taken at this time to improve the quality of Romanian pigs. The most important varieties of foreign pigs being added to Romanian stocks are the Landrace and the White York pigs; their proper care and feeding is discussed and their valuable properties are emphasized. Other imported varieties of lesser importance are also briefly considered. Includes one Belgian reference.

1/1

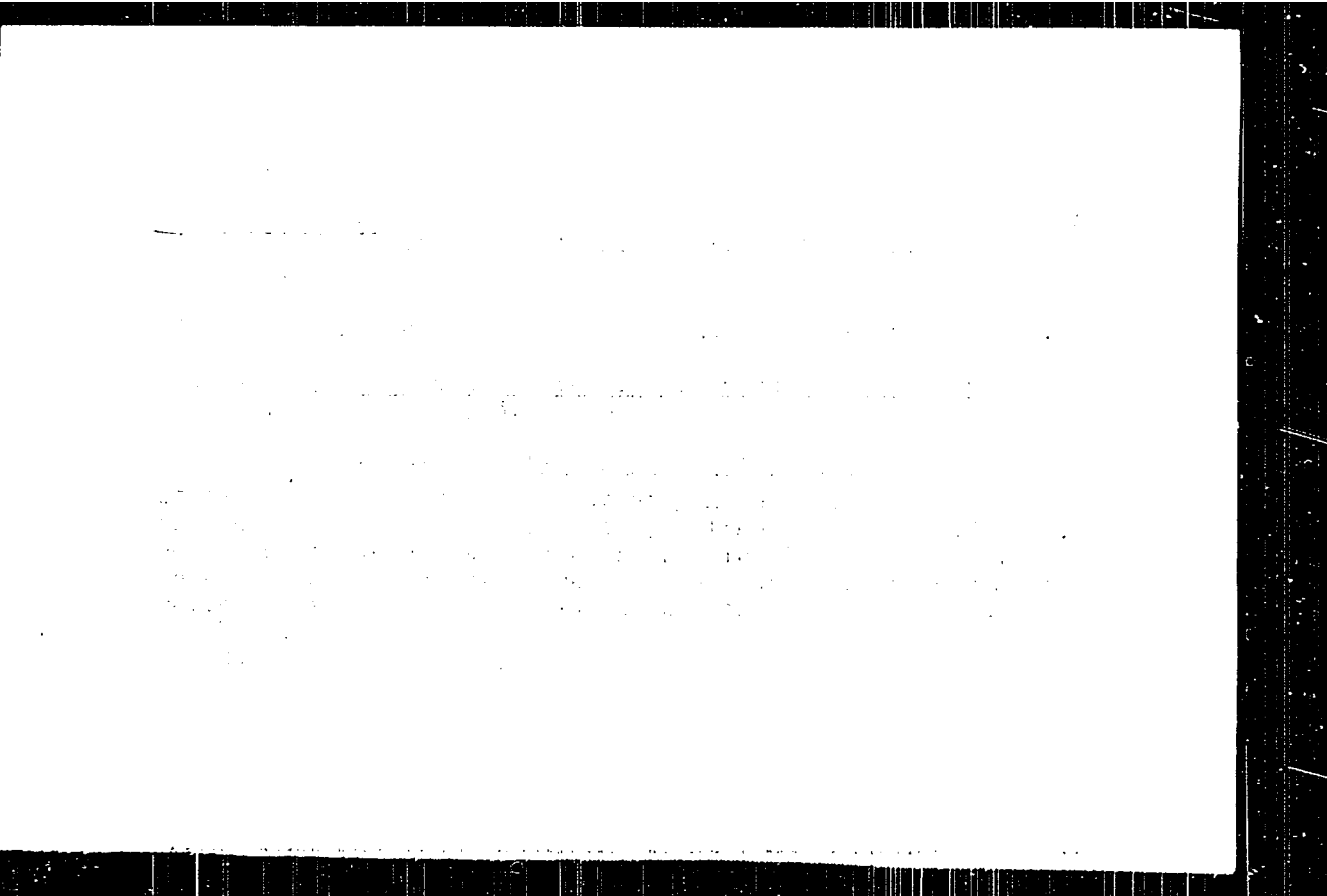
- 118 -

GLIGOR, VIRGIL

VIRDZHIL, GLIGOR [Virgil, Gligor], doktor

Prospects for expanding stockbreeding in Rumania. Zhivotnovodstvo 20
no.8:85-87 Ag '58. (MIRA 11:10)

1. Direktor nauchno-issledovatel'skogo zootekhnicheskogo instituta
Rumynskoy Narodnoy Respubliki.
(Rumania--Stock and stockbreeding)



1963, Vol. 1, 1207 Dr. POP, A., and IONITA, C. of the Zootechnical Research Institute (Institutul de Cercetari Zootehnice).

"Feeding of Bazna Pigs Being Fattened with rations rich in Corn."

Bucarest, Revista de Zootehnie si Medicina Veterinara, Vol 13, No 6 Jun 65, pp 5-16.

Abstract [Authors' English summary modified]: Bazna pigs were fattened from an initial weight of 50 kg to a weight of 110 kg in 90 days with a diet containing between 74.98 and 86.84 percent corn. Mean daily weight increases varied from 619 g for lot II to 681 g for lot IV, consumption of nutritive units from 4.927 per kg of live weight increase for lot II to 4.699 for lot IV. The slaughterhouse yield was not influenced by the different proportions of corn in the rations. Fattening of pigs with high-corn rations is recommended; best results were obtained by the authors with a combination of 86.84 percent corn, 7.01 percent wheat bran, 2.12 percent sunflower seeds and 4.03 percent blood flour. It is recommended to remove the pigs from the pens when they reach 105 kg. Contains 5 tables and 5 Rumanian, 1 Russian and 1 US references.

1/1

BIRMAN, A., Inc.; GIBSON, J.

Reduction of the cost price at the "Portelann" enterprise,
1971. Problems seen 17 no. 1016-1018 01/02.

1. Director, "Portelann" Enterprise, 01/1 (for Birman).
2. Chief Accountant, "Portelann" Enterprise, 01/1 (for
Gibson).

010000 V.

EXCERPTA MEDICA Sec.18 Vol.1/4 Cardiovascular Apr 57

1012. GLIGORE V., FLORESCU I. and PAPILIAN V.V. Rolul reumatismului in etiologia si patogenia sindroamelor coronariene *The significance of rheumatic disease in the aetiology and pathogenesis of coronary syndromes* Probl. reumatol. 1956, 4 (115 --137)

It is asserted that angina pectoris, although it is rare in rheumatic patients, is only an anatomico-clinical localization of rheumatic disease. Cases are reported to show that angina pectoris and myocardial infarction have occurred in rheumatic patients. The clinical picture varied with the meteorological conditions - these affections had been preceded by acute tonsillitis, or occurred during or immediately after rheumatic polyarthritis, and improved or disappeared under the influence of antirheumatic treatment. These facts should be taken into account when considering the prophylaxis and aetiological treatment of angina pectoris and myocardial infarction.

Graur - Bucarest (XVIII, 6)

0210081, v
GCIA, I., Prof.; GLIGORE, V., conf.; DIMITRESCU, I., dr.; FISCHER, G., dr.;
FLORESCU, I., dr.; GHERMAN, Gr., dr.; FRATILA, I., dr.

Therapy of ulcerous diseases. Med. int., Bucur. 8 no.4:518-
525 Aug 56.

1. Lucrare din Clinica a II-a medicala I.M.F. - Cluj.
(PEPTIC ULCER, therapy
gastric lavage with hypertonic glucose solutions,
evaluation)
(HYPERTONIC SOLUTIONS, ther. use
glucose solutions in gastric lavage for peptic ulcer)

RUMANIA/General Problems of Pathology - Tumors. Comparative Oncology. Tumors of Man U

Abs Jour : Ref Zhur Biol., No 6, 1959, 27516

Author : Gligore, V., Boeru, I.

Inst : "

Title : Asymptomatic Carcinoma of the Stomach with Early Metastasis into the Rib

Orig Pub : Chirurgia, 1957, 3, No 1, 129-132

Abstract : No abstract.

Card 1/1

- 31 -

EXCERPTA MEDICA Sec. 18 Vol. 2/7 Cardio July 58

2137. *Contributions to the study of the myocardial infarct in valvular cardiopathies*
Contribuții la studiul infarctului miocardic în cardiopatiile valvulare. G. GIGORE V.,
FLORESCU I. and PAPILIAN V. Clin. a II-a Med. și Inst. de Anat. Patol., I.M.F., Cluj
Med. intern. (Bucuresti) 1957, 9/9 (1391 - 1396)

On the basis of clinical, ECG and morbid-anatomical data, stress is laid on the characteristics of myocardial infarction in valvular cardiopathies: appearance at a young age, higher incidence in aortic patients, onset together with circulatory insufficiency which resists to treatment (in 50% of the cases), unfavourable prognosis.

Nicolasesco - Bucharest (XVIII, 6)

EXCERPTA MEDICA Sec 6/Vol 13/6 Internal Medicine June 59

2958 THE ROLE OF METEOROLOGICAL FACTORS IN THE PATHOGENESIS OF GASTRODUODENAL HAEMORRHAGES - Contributi la rolul factorilor meteorologici in etio-patogenia hemoragilor gastro-duodenale - Goia I., Gigore V., Florescu I., Babutaru G. and Strimbu I. Clin. a II-a Med. I.M.F., Cluj - MED. INTERN. (Bucuresti) 1957, 9, 10 (1476-1483) Graphs 2 Tables 1

In the summer of 1956, the incidence of haemorrhages in the course of ulcer disease as well as of cerebral and uterine vascular haemorrhages, was much higher than that noticed in the corresponding period of 1955. A study of the local climatic conditions during these months revealed sudden changes in atmospheric pressure and minimal temperature, mainly caused by the presence of certain currents of cold air. A causal relationship is established between the meteorological variations observed and the frequency of the haemorrhagic accidents.

Nicolaeaco - Bucharest

EXTRACTA MEDICA Sec 6 Vol 13/7 Internal Med. July 59

349. CLINICAL AND THERAPEUTIC CONSIDERATIONS ON ACUTE THYROIDITIS DURING AND AFTER INFECTION - Considerații clinice și terapeutice asupra tiroiditelor acute intrași postinfecțioase - Gligore V., Elițoiu Gh., and Weiss L., Clin. a II-a Med., Cluj - MED. INTERNA (București) 1957, 9/12 (1814-1821)

On the basis of 20 clinical cases, stress is laid on the frequency of acute thyroiditis occurring during or after acute infections of a seasonal, often epidemic nature: acute angina, rhinopharyngitis, influenza, rheumatism, pneumopathies, etc. The clinical forms are: acute rheumatoid thyroiditis provoked by an allergic infectious mechanism; acute microbial thyroiditis (due to pneumococci, staphylococci, streptococci, etc.). The clinical picture varies, according to the morphofunctional state of the gland and the individual reactivity; the functioning of the thyroid gland may be excessive or defective, the condition may be accompanied by fever, the rise in temperature being only slight occasionally, and there is often a diffuse or localized and painful tumefaction of the thyroid gland. So far as the diagnosis is

GLIGORE, Viorel; FLORESCU, I.; PAPILIAN, V.V.

Relations between rheumatism and coronary disease. Probl. reumat., Bucur.
no.5:123-125 1958.

(RHEUMATIC HEART DISEASE, complications
coronary dis.)

(CORONARY DISEASE, etiol. & pathogen.
rheum. fever & heart dis.)

GLIPPORE, V.; MEDREA, B.; POPA, M.; KARASSI, A.

Occupational placement of diabetics. Med. int., Bucur. 10 no.1:121-124
Jan 58.

(DIABETES MELLITUS
employment & rehabil. of diabetics)
(REHABILITATION
occup. of diabetics)
(INDUSTRY AND OCCUPATIONS
placement of diabetics)

BY MEDICAL DEPT Sec 6 Vol 13/2 Internal Med. sup 59

4267. INVESTIGATIONS ON ECG CHANGES IN CONNECTION WITH TONSILLECTOMY - Cercetări asupra modificărilor electrocardiogramei în legătură cu amigdalectomia - Gligore V., Rub D. and Rădulescu L. - MED. INTERNA (București) 1958; 10/6 (855-862) Graphs 3

ECG studies carried out in 50 patients submitted to tonsillectomy (for rheumatic, cardiovascular, renal and other diseases) revealed frequent disturbances explainable by a reflex nervous mechanism. Occasionally, notably in young subjects, myocardial coronary lesions were observed secondary to tonsillectomy. Removal of infection foci caused amelioration of the ECG picture in most cases.

Nicolaesco - Bucharest (XVIII, 6, 9, 11)

REVISTA MEDICA Sec 6 Vol 13/2 Internal Med. Sup. 69

4406. GASTROPATHIES AND DUODENOPATHIES AMONG LEADING SPORTSMEN - Considerații asupra gastropatiilor și duodenopatiilor la unii sportivi de performanță - Gligore V., Ioanette M., Moraru M. and Pop V. Clin. Med. I. și a II-a I.M.F., Cluj - MED. INTERNA (București) 1958, 10/7 (1045-1050)

Among a group of 43 athletes (skiers) two-thirds presented gastroduodenal affections (gastritis, duodenitis and, in 10%, ulcers). This high incidence is the result of many factors: the state of the CNS, circulatory imbalance, excessive demands made upon the digestive apparatus, exposure to cold, etc. However, the essential element in the pathogenesis of these morbid alterations is the dysequilibrium between the required blood flow and the actual blood flow in the digestive apparatus which results from effort during the digestion process. Nicolaescu - Bucharest

GLIGORE, V., dotnont, doktor; GERMAN, G.; DIMITRESCU, I.; BACHEU, T.; GROFU, G.;
KUTUSH, K.; FEKETE, T.

Problem of peptic ulcer in elderly people. Klin.med. 37 no.10:41-44
O '59. (MIRA 13:2)

1. Iz 2-y meditsinskoy kliniki (zaveduyushchiy - prof. doktor I.Goya)
Mediko-farmatsevticheskogo instituta g. Kluzh.
(PEPTIC ULCER in old age)

GLICORE, V., conf.; DUTU, Al., dr.; A. MEANU, V., dr.; RUSSE, M., dr.;
GUTUSI, C., dr.

Contributions to the study of severe blood eosinophilias.
Med. intern., Bucur 12 no.7:1053-1060 J1 '60.
(HAY FEVER, diagnosis)

GLICONE, V.; CRACIUN, Tr.; BACIU, Tr.; BENETATO, V.

Contributions to the study of the cerebral form of the carotid sinus hyperreflectivity syndrome. Rumanian M Rev. no.1:160-162 Ja-Mr '61.

1. The 2nd Medical Clinic — Director Prof. I. Goia, and the Institute of Physiology, Cluj.
(CAROTID SINUS diseases) (ARTERITIS complications)
(CEREBRAL ARTERIES diseases)

GLIGORE, V., conf.; BACIU, Tr., dr.; FLOREA, E., dr.; SAVA, S., dr.

The role of various occupational factors in the etiopathogenesis of hypertensive diseases in automobile and tractor drivers. Med. interna. 14, no. 4: 577-582 My '62.

1. Lucrare efectuată în Clinica a II-a medicală I.M.F., Cluj.
(HYPERTENSION) (OCCUPATIONAL DISEASES) (AUTOMOBILES)
(AGRICULTURAL WORKERS DISEASES) (STRESS)
(AUTOMOBILE EXHAUST) (FATIGUE) (NOISE)

GLIGORE, V., conf.; BACIU, Tr., dr.; LUCAGIU, Ol., dr.

Investigations of gastric functions in diabetic patients. Med.
intern. 14 no.2:187-191 F '62.

1. Lucrare efectuata in Clinica a II-a medicala, I.M.F. Cluj.
(DIABETES MELLITUS physiology) (STOMACH physiology)