

Crusan, I.

5

STANESCU, I.
SURNAME (in caps); Given Names

Country: Rumania

Academic Degree: Engineer

Affiliation: Research Institute for the Cultivation of Corn (Institutul de Cercetari pentru Cultura Porumbului).

Source: Bucharest, Probleme de Tehnica si Veterinara, No 6, 1961, pp 18-23.

Date: "The Economic Efficiency of the Valuation of Corn in the Feeding of Milk Cows."

Co-authors:

POPOVICI, V.V., Engineer, Research Institute for the Cultivation of Corn (Institutul de Cercetari pentru Cultura Porumbului).
CRISAN, I., Engineer, Research Institute for the Cultivation of Corn (Institutul de Cercetari pentru Cultura Porumbului).

OPREA, C. V., prof.; MURESANU, P. L.; DRAGAN, I.; CRISAN, I.; OPRIS, L.;
MIHOC, Ema; BALAN, S.; BAUMSTARK, I.; PETRESCU, C.; VILCEANU, Nicoleta

Studies on the soils of the western part of our country. Studii agr
Timisoara 8 no.3/4:163-169 JI-D '61.

1. Membru al Comitetului de redactie si redactor responsabil adjunct,
"Studii si cercetari, Biologie si stiinte agricole" (for Oprea).

CRISAN, I.

Soils of the western part of Rumania. III. Their nomenclature
and classification. Studii agr Timisoara 9 no.1/2:90-114 Ja-
Je '62.

LITEANU, Candin; CRISAN, Ion; TRUTA, Lucia

Contributions to the complexometric determination of
anions. Pts. 1-3. Studia Univ B-B S. Chem 8 no. 2:31-49
'63.

LITEANU, Candin; CRISAN, Ion; RENCZ, Ghizela

Complexometric determination of chromium by retitration of complexon excess with $\text{Co}(\text{NO}_3)_2$ in the presence of sulfocyanide and organic bases. Studia Univ B-B S. Chem 8 no. 2:85-88 '63.

LITEANU, Candin; CRISAN, Ion; ALBERT, Viorica

Complexometric determination of cerium by retitration of
the complexon excess with FeCl_3 . Studia Univ B-B S. Chem
8 no. 2:89-93 '63.

LITEANU, Candin; CRISAN, Ion; GHEORGHE, Florica

Complexometric determination of molybdenum by retitration
of complexon excess with FeCl_3 . Studia Univ B-B S. Chem
8 no. 2:107-111 '63.

LITTEANU, Candin; CRISAN, Ion

Decomposition and formation of complexonates by reaction of
substitution with a nonparticipant reactant at other
equilibriums. Studia Univ B-B S. Chem 8 no. 2:113-133 '63.

LITFANU, Candin; CRIGAN, Ion

Decomposition and formation of complexonates by reactions of double substitution. Studia Univ B-B S. Chem 9 no. 1:29-38 '64.

Decomposition and formation of complexonates by the reaction of substitution with a participant reactant in a pre-equilibrium. Ibid.:39-45

On the hydrolysis of salts partial by dissociated with both hydrolyzable ions. Ibid.:69-75

RUMANIA

BUSILA, V. T., Prof; POPIAN, R., Dr; STAMBOLIU, D. W., Dr; PETRESCU,
El., Dr; CRISAN, I., Dr.

Clinic of Contagious Diseases, Institute of Medicine,
Timisoara (Clinica de boli contagioase, Institutul
de medicina, Timisoara) - (for all)

Bucharest, Viata Medicala, No 17, 1963, pp 1181-1187

"Neuropsychic Sequelae After Tetanus Neonatorum"

(5)

VETERINARY MEDICINE

RUMANIA

BUSILA, V. T., Prof, IONESCU, I., Dr., POPIAN, R., Dr., PETRICA, L., Dr., VILCEANU, M., Dr., CRISAN, Ioana, Dr., and PINTEA, Lia, Dr., Work was performed at the CLINIC of Infectious Diseases (Clinica de Boli Infectioase) Institute of Medicine (Institutul de Medicina), Timisoara, and the Banat Regiune Veterinary Laboratory (Laboratorul Veterinar Regional Banat).

"Anthrax Epidemic Accompanying an Epizooty Among Goats."

Bucharest, Microbiologia, Parazitologia, Epidemiologia, Vol 11, No 2, Mar-Apr 66, pp 139-145.

Abstract: [Authors' English summary modified]: The authors report an epidemic of anthrax which followed by a few days an epizooty among goats with which the human patients came in contact. While in the human cases the disease of average intensity (only one case of septicemia), in the goats the disease was of the highly-acute septicemic type with many lethal cases (28.3 percent of the exposed animals). The epidemic affected 11 persons. Includes one table, one figure and 10 references, of which 5 Rumanian and 5 Western. -- Manuscript submitted 22 Feb 1965.

1/1

CRISAN, I.

Soviet electric industries as reflected in the Seven-Year Plan for the development of USSR national economy. p. 437.

ELECTROTEHNICA. (Asociatia Stiintifica a Inginerilor si Tehnicienilor din Romania si Ministerul Energiei Electrice si Industrii Electrotehnice) Bucuresti, Rumania. Vol. 6, no. 12, Dec. 1958.

Monthly List of East European Accessions (EEAI) LC Vol. 8, No. 6, June 1959.
Uncl.

CRISAN, I.

CRISAN, I. Remarks on Elek Chapo's article "Effect of the Amount of Moisture in Air on the Operation of the Cupola Furnace." p. 288.

Vol. 10, No. 11, Nov. 1955.

KOHASZATI LAPOK
TECHNOLOGY
Budapest, Hungary

So: East European Accession, Vol. 5, No. 5, May 1956

COUNTRY	: Rumania	5-12
CATEGORY	:	
ABS. JOUR.	: AZKhim., No. 16 1959, No.	57714
AUTHOR	: Pupu, A. and Crisan, I.	
INST.	: Not given	
TITLE	: On the Electrolytic Refining of Lead	
ORIG. PUB.	: Rev Chim, 9, No 9, 490-495 (1958)	
ABSTRACT	: The authors have investigated conditions for the electrolytic deposition of Pb from amidosulfonic electrolytes with a view towards the production of a dense deposit with good adhesive properties. The electrolyte was prepared by dissolving PbO in amidosulfonic acid and had the following composition (in gms/liter): Pb 80, free acid 70. The composition of the anodes was as follows (in %): Pb 97.2, Bi 2.6, Cu 0.2. When addition agents were not used, porous dendritic growths were	

CARD: 1/3

COUNTRY	: Rumania	H-11
CATEGORY	:	
ABS. JOUR.	: RZKhim., No. 16 1959, No.	57714
AUTHOR	:	
INST.	:	
TITLE	:	
ORIG. PUB.	:	
ABSTRACT	: observed to form. Additions of phenol, resorcinol, and of joiner's glue failed to check dendritic growth formation. The simultaneous presence of phenol and of glue, taken in the amount of 8 gms/liter each, leads to the formation of dense, finely crystalline deposits when the electrolysis is operated at D_c [i.e., cathodic current density?] = [?] amp/dm^2 and at V_T [current yield?] $\sim 97\%$. Resorcinol can be substituted for glue (10 gms/liter). Circulation of the electrolyte makes it	

CARD: 2/3

COUNTRY : Rumania H-12
CATEGORY :
ABS. JOUR. : RZMhim; No. 16 1959, So. 57714
AUTHOR :
INST. :
TITLE :
ORIG. PUB. :
ABSTRACT : possible to operate at $D_c = 1.2 \text{ amps/dm}^2$. The
cathodic deposit obtained had the following com-
position (in %): Pb 99.9929, Bi 0.0071, Cu not
present. The anodic mud contained 16-39% Bi.
Ya. Matlis

CARD: 3/3

18.6100

67118

5(1)

RUM/3-59-9-7/67

AUTHOR: Crisan, I. Engineer

TITLE: The Electrolytic Preparation of ²¹Copper Powder ¹⁶From Hydrochloric Solutions of Monovalent Complex Ions

PERIODICAL: Revista de chimie, 1959, Nr 9, pp 518-523 (Rumania)

ABSTRACT: The author points out that the new industrial branch of powder metallurgy requires the preparation of large quantities of metal powders. Among the methods of preparation, the electrochemical process is one of the most important ones. It tends to replace all the other methods due to certain advantages such as the possibility of obtaining the finished product in a pure state, the granulometric uniformity, etc. The author mentions the fact that there are several theories about the mechanism of utilizing metal powder in the electrochemical process. He quotes the theory of the autocomplex ions, the theory of exhaustion of the cathodic film, and the theory of secondary reduction. After some historical considerations, the author presents the experimental part of his study. He describes the proces-

Card 1/4

67118

RUM/3-59-9-7/67

The Electrolytic Preparation of Copper Powder From Hydrochloric Solutions of Monovalent Complex Ions

ses at the electrodes, the preparation of the powders, the efficiency of the current, specific energy consumption, volumetric weight, granulometric composition, and compares the methods based on hydrochloric and sulfuric solutions. The author concludes that the preparation of copper powder from hydrochloric solutions becomes complicated through the instability of the baths, due to hydrolysis, through the formation of ions of different valences, and particularly through the passivization of the anodes. The first two difficulties mentioned can be avoided by insulating the electrolyte from any contact with the atmosphere (with an oil film) and adding 5 to 15 grams of HCl per liter, and the third difficulty - the anodic passivization - through low anodic current densities, or through solutions in copper and concentrated in NaCl, and particularly through a strong agitation or recirculation of the electrolyte. The main characteristics of the

Card 2/4

67118

RUM/3-59-9-7/67

The Electrolytic Preparation of Copper Powder From Hydrochloric Solutions of Monovalent Complex Ions

powder, i.e., its volumetric weight and granulometric composition, can be influenced through variation of the operating conditions. Thus the volumetric weight and the average size of the particle increase with the increase of the concentration of copper and decrease of the density of current. The specific energy consumption decreases with the increase of the density of current up to 0.290 kwhr per kilogram. The intensification of the cathodic process through increase of the density of current is limited by the increase of pH in the coating adjacent to the cathode which provokes the hydrolysis. In comparing the two methods of electrolytic preparation of copper powder, the author remarks that the hydrochloric process is superior to the sulfuric one, due to the low consumption of energy caused by the double electrochemical equivalent and the good conductivity of the solution. There are 9 graphs, 6 tables, and 10 references, 7 of which are

Card. 3/4

67118

RUM/3-59-9-7/67

The Electrolytic Preparation of Copper Powder From Hydrochloric
Solutions of Monovalent Complex Ions

Soviet, 2 German and 1 American.

Card 4/4

BUSILA, V.T., prof.; CRISAN, I.G., dr.; CRISAN, Ioana, dr.; MAAGER, P.,
chim.

Contribution to the differential laboratory diagnosis of obstructive
jaundice. Med. intern. 14 no.8:959-968 Ag '62.

1. Lucrare efectuata in Clinica de boli contagioase, I.M.Timisoara.
(JAUNDICE, OBSTRUCTIVE) (DIAGNOSIS, DIFFERENTIAL)
(DIAGNOSIS, LABORATORY) (HEPATITIS, INFECTIOUS)
(BILE DUCT NEOPLASMS) (CHOLELITHIASIS) (PANCREATIC NEOPLASMS)
(LIVER NEOPLASMS) (GALL BLADDER NEOPLASMS) (LIVER CIRRHOSIS)

CRISAN, Iacob, prof. (Bucuresti)

Algebra in medieval Europe. Gaz mat B 15 no.11:481-483 N '64.

CRISAN, Lidia

RUMANIA/Chemical Technology - Chemical Products and Their
Application. Food Industry

I-28

Abs Jour : Referat Zhur - Khimiya, No 4, 1957, 13878

Author : Ciobanu Aurel, Crisan Lidia

Title : Freezing of Fruit and Vegetables

Orig Pub : Congelarea fructelor si legumelor. Rev. ind. aliment.
prod. vegetale, 1956, No 5, 1-5

Abstract : No abstract .

Card 1/1

- 402 -

RUMANIA / Chemical Technology. Chemical Products H-28
and Their Applications. Food Industry.

Abs Jour: Ref Zhur-Khimiya, No 3, 1959, 10075.

Author : Ciobanu, A., Crisan, L.
Inst : Not given.
Title : Rapid Refrigeration of Animal Beef.

Orig Pub: Lucrarile Inst. cercetari aliment., 1958, 2,
235-247.

Abstract: The method of rapid refrigeration of beef under laboratory and semi-industrial conditions was studied: the duration of refrigeration, losses in weight, temperature alterations in and on the beef surface, the number of microorganisms on the surface, the ammonia nitrogen, and organoleptic properties. It was established that rapidly refrigerated beef is of better quality by all stan-

Card 1/2

ROMANIA / Chemical Technology. Chemical Products and H-28
Their Applications. Food Industry.

Abs Jour: Ref Zhur-Khimiya, No 3, 1959, 10075.

Abstract: dards compared to beef refrigerated by the usual
method. Increasing speed of air blasts from 0.36
to 2.2 m/sec. decreases weight losses. Beef treat-
ed by cold jets has a lower count of microorganisms
on the surface. The duration of refrigeration of
the forequarters is 15% less than that of the hind
quarters. -- Author's abstract.

Card 2/2

219

CRISAN, L., ing.

Line for manufacture of parallelepiped and pyramidal frustrum shaped boxes for luncheon meat and corned beef production. Ind alim anim 11 no.3:74-79 Mr'63

1. Intreprinderea de Mezeluri si Conserve de Carne, Sibiu.

CRISAN, I.; CRACIUN, M.; CRISAN, M.; BAUMSTARK, A.

Establishing limits of soil adsorption capacity and its correlation
with some physical and chemical characteristics. Studii agr
Timisoara 10 no.1:49-57 Ja-Je '63.

CRISAN, I.; BRATU, I.; DRUGARIN, C.; BRATU, N.; TODICA, P.

Partial results of the agrochemical classification of
Banat soils. Studii agr Timisoara 10 no. 2: 241-256
J1-D '63.

SEMLYEN, A., conf. ing.; BUCEA, C., ing.; CRISAN, O., ing.

Comparative studies on the determination of the optimum load
distribution to power stations by using a model. Energetica Rum
12 no.10:534-538 O. '64.

CIUMEDEAN, Dumitru, ing.; CRISAN, Remus, ing.

Use of radioactive isotopes in road constructions. Rev
transport 10 no. 7:307-310 J1 '63.

CRISHAN, S.

FA 161T109

USSR/RUMANIA/Engineering - Tractors Jan/Feb 50

"Tractor Industry in the Rumanian People's Republic," S. Crishan, Engr, 5 pp

"Metalurgia" No 1

Describes IAR-22 tractor constructed by Soviet-Rumanian tractor plant according to the Soviet model. Tests revealed some defects, for elimination of which another model, IAR-23, was built. Latter is satisfactory and may be used for work on any soil. USSR supplied cast iron and many essential parts.

161T109

CRISAN, S. ; FLORESCU, L.

A new technology in the construction and manufacture of toothed wheels; gears from
"ligomet." p. 471.
(INDUSTRIA LEMNULUI. RUMANIA. Vol. 5, no. 11, Nov. 1956.)

SO: Monthly List of East European Accessions (EEAL) LC, Vol. 6, no. 7, July 1957. Uncl.

Crisian, S.

CRISIAN, S.

CRISIAN, S. Construction of a mecharohydraulic apparatus for measuring the cutting force at turning. n. 92.

Vol. 8, no. 2, Feb. 1956.

TEHNICĂ SI CONSTRUCȚIA DE MASINI.

TECHNOLOGY

RUMANIA

Co: East European Accession, Vol. 6, no. 5, May 1957

BACIU, I.; DEREVENCO, P.; SOLTUZ, V.; CRISAN, T.; CATANICI, V.

Use of the ~~ECG~~ test of resistance to hypoxia in exploration of physical exertional capacity. Stud. cercet. de fiziol. 10 no.2: 117-131 '65.

CADARIU, Gh.; CRISAN, V.; VLAD, L.; SCHORSCHER, E.; MOISE, Gh.

The phenomenon of physical adaptation in workers employed in hot work-shops. Rev. igiena microb. epidem., Bucur. no.4:42-57 Oct-Dec 54.

1. Dankner Institutul de Igiena, fil. Timisoara.
(WORK, physiology
adaptation of organism in workers working in hot
work-shops)
(HEAT, effects
on workers in hot work-shops)

CRISAN, V.

A method of remedying muddy junctions. p. 408.

REVISTA CALOR FERATE. (Calle Ferate Romine) Bucuresti, Rumania.
Vol. 7, no. 8, Aug. 1959.

Monthly list of East European Accessions (EEAI) LC Vol. 9, no. 2, Feb. 1960

Uncl.

VOICULESCU, Dan (Bucuresti); CRISAN, Victor (Aiud)

Mathematical notes. Gaz mat B 15 no.2:62-65 F '64.

SHASHKOV, Ya.M.; ORISHEN, V.F.

Supercooling at crystallization front when growing silicon single
crystals by the Chokhra'skii method. Dokl. AN SSSR 163 no.4:942-
944 Ag '65. (MIRA 18:8)

1. Submitted January 19, 1965.

CRISMARU, V.

UGUREANU, Ernest; IONESCU, Ecaterina; BOINGEANU-IRANGA, A.; BOLDESCU, I.;
CRISMARU, V.; HUTU, I.

Studies of prevention of helminthiasis in rural areas. Bul. stiint.,
sect. med. 8 no.4:1013-1034 Oct-Dec 56.

(HELMINTH INFECTIONS, prev. & control
in Rumania, in rural areas)

CRISNARU, N.

CRISNARU, N.

CRISNARU, N. Soviet research for the improvement of the quality of steel for bearings. p. 70.

Vol. 8, no. 10, Oct. 1956
METALURGIA SI CONSTRUCTIA DE MASINI.
TECHNOLOGY
RUMANIA

So: East European Accession, Vol. 6, No. 5, May 1957

BURDEA, M., dr.; BOLDESCU, Ioana, dr.; PETREA, D., dr.; HOLBAN, Livia, dr.;
SVANI, Seli, dr.; NEGRESCU, Verona, dr.; CRISMARU, Victoria, entomolog

Contribution to the study of Isospora belli infestations in
children. *Pediatria (Bucur)* 14 no.1:55-60 Ja-F'65.

1. Lucrare efectuata in Clinica de pediatrie, Iasi.

CRISNIC, Titus, ing.

New instruments constructed by the Enterprise for the Rationalization and Modernization of Electric Power Installation designed for increasing labor productivity in power stations. Energetica Rum 13 no.2:66-75 F '65.

1. Head of the Workroom for Thermal Automation, Enterprise for the Rationalization and Modernization of Electric Power Installations. Submitted October 17, 1964.

PINTEA, V.; SPATARU, Carmen; CRISTA, N.

Contributions to the knowledge of the pharmacodynamic effects of acacia and linden honey. Studii agr Timisoara 10 no.1:203-207 Ja-Je '63.

PINTEA, V.; COMSA, I.; SABAU, L.; CRISTA, N.

Cutireaction to adrnaline-dionine and its correlation
with production in laurine. Comunicari zoolog 2,91-99
'63.

CRISTALI, Gh.

SURNAME, Given Names

Country: Rumania

Academic Degrees: -Prof. Univ.-

Affiliation: -not given-

Source: Bucharest, Stinta si Tehnica, No 8, Aug 1961, pp 38-39.

Data: "New Farm Machines Built in the USSR."

GPO 981643

CRISTALL, Gh., prof.

Mechanization of the bulbous root plant harvesting. St. sl. Teh
Buc 14 no. 9:22-33 1962.

CRISTALI, Gh., ing.; POPESCU, T., ing.

Mineral fertilizer distributor of the MIC-1 centrifugal type.
Mec electrif agric 9 no. 1: 46-51 '64.

1. Institutul agronomic "N. Balcescu", Bucuresti.

CRISTEA, A.

Organization of the service of the head metrologist at the Institute of Food
Industry Research. p. 39

METROLOGIA APLICATA

Vol. 2, no. 3, Mar. 1955

Rumania

Source: EAST EUROPEAN LISTS Vol. 5, no. 10 Oct. 1956

CRISTEA, A.

Some methods for approximate solving of turbulent motion
nonlinear equations. Studii hidraul 5:245-272 '63.

ROSCA, Gr.; CRISTEA, A.; DOGOTERU, Victoria; BEJAN, Raisa

Fishing lines and cords made of polypropylene and polyethylene monofilaments. Ind alim 14 no.9:366-369 S'63.

1. Intreprinderea de plase si unelte pescaresti, Galati
(for Dogoteru, Bejan).

CIOC, D., conf. ing.; CRISTEA, Al.; MARUTA, Al., ing.

Some problems on the graphic calculation method of nonper-
manent motion in pipes under pressure. Hidrotehnica 8 no.7:
237-242 J1'63.

RUMANIA

NICOLAU, Cl., Conf. Dr.; NICOLAU, Elena; CRISTEA, Al.; MURESAN, V.; VOICU, V.,
Lieutenant-Major, Medical Corps; and STROESCU, Eugenia

"Influence of Ionizing Radiation on Epinephrine and Norepinephrine"

Bucharest, Revista Sanitara Militara, Vol 16, Special No., 1965; pp 492-497

Abstract: Study on mice, dogs and rats with irradiated or normal epinephrine
or norepinephrine: LD50, effect on rats duodenal strips, pressor response.
Toxicity, vasopressor effect and beta-adrenolytic effects all increased
following irradiation, corresponding to electron charge of hydroxyl groups
and amine groups. 4 tables.

CRISTEA, Carol, technician

Over 12% is the yearly rate for the increase of labor
productivity. Constr Buc 16 no. 743:3 4 April '64

POPESCU, Eugeniu, ing.; CHISTEA, Carol, tehnician; COADA, Corneliu,
ing.

The Doaga mechanized sand and gravel pit. Constr Buc 14
no. 675:3 15 December 1962.

1. Seful serv. productiei din grupul nr. 3-Ploiesti al
Trustului nr. 1.

RUMANIA/Cultivated Plants. Potatoes. Vegetables. Melons. M

Abs Jour : Ref Zhur-Biol., No 15, 1958, 68176

Author : Cristea, Chiru

Inst : ~~S~~

Title : Planting Cabbages Directly in the Field.

Orig Pub : Gradina, via si livada, 1957, 6, No 5,
15-20

Abstract : Near the city of Stalino (RMR), a study has been made since 1952 of a method of growing early and late cabbage varieties without transplantation. The method proved much more effective than the ordinary one; the yield increased by 170-253 percent, and the plants were bigger and healthier. The negative aspects of this method are: 2-3 times more seed is needed than

Card : 1/2

RUMANIA/Cultivated Plants. Potatoes. Vegetables. Melons. M

Abs Jour : Ref Zhur-Biol., No 15, 1958, 68176

with ordinary transplantation of seedlings,
and it is necessary to thin out the plants.
In regions of adequate precipitation, it is
recommended that cabbages be planted directly
in the field. -- P. I. Lopushanskiy

Card 2/2

Country :Rumania
Category :CULTIVATED PLANTS. POTATOES, Vegetables. Cucurbits.
Abs. Sour. :REF ZHUR-BIOL..21.1958.NO-95014
Author :Cristea, Chiru
Institut. :
Title :The Făgăraș Red Onion and Its Cultivation Directly
from Seed
Orig. Pub. :Grădina, via și livada, 1958, 7, No. 4, 9-13
Abstract :No abstract

Card: 1/1

CRISTEA, C

TECHNOLOGY

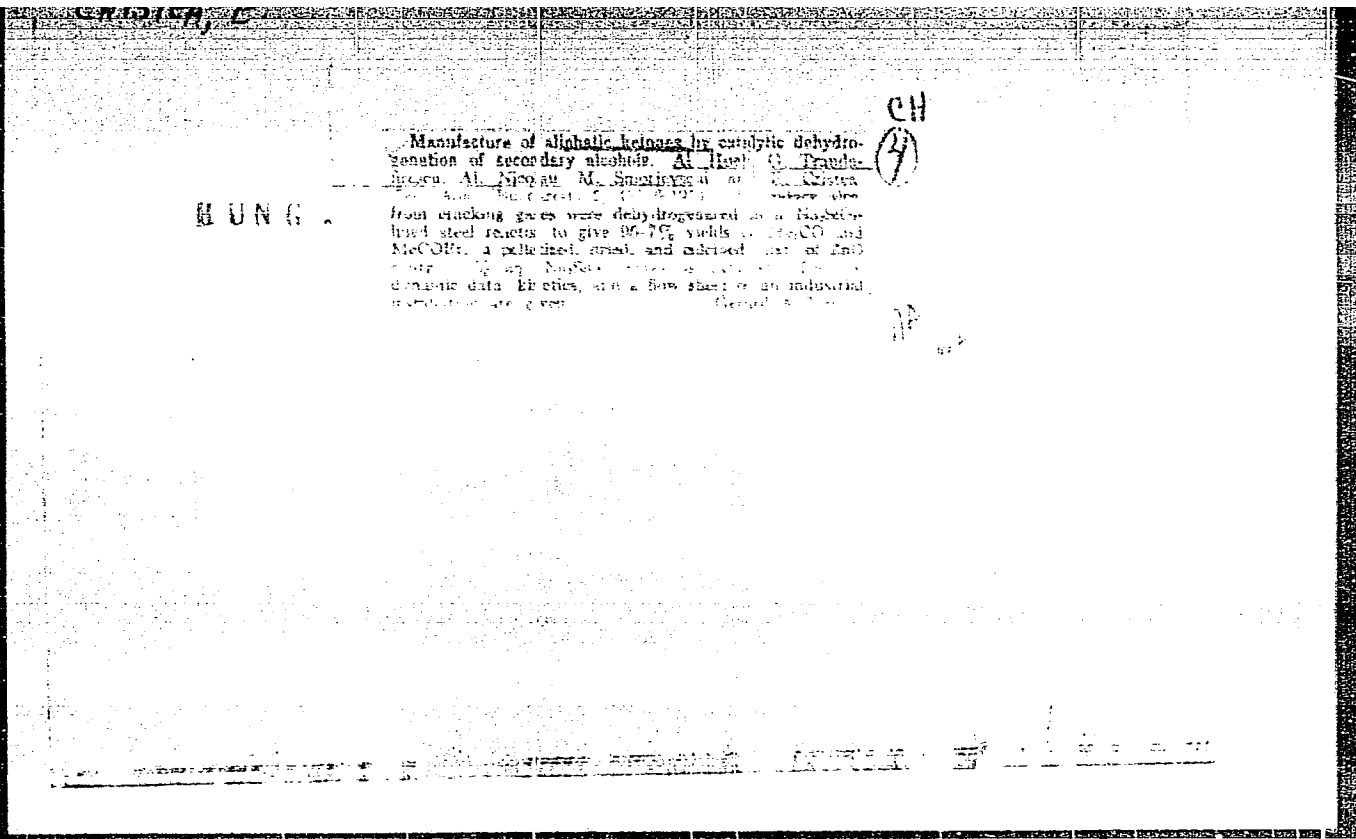
PERIODICAL: REVISTA INDUSTRIEL ALIMENTARE. PRODUSE VEGETALE NO. 9, 1958

CRISTEA, C. Accomplishments of the Grivita Canning Plant. p. 31.

Monthly List of East European Accessions (EEAE) Lc Vol. 8, no. 4
April 1959, Unclass

CRISTEA, Costache

From the experience of using Textolite and plastic bearings
for Rumanian streetcars. Rev transport li no.11s519-521 N '64.



GURBAN, G.; CRISTEA, Elena

Influence of uncoupling substances, inhibitors of electron transport, and substratum concentration upon the quotient of phosphorylation in succinate. Studii cerc biochimie 5 no.3:415-421 '62.

1. Laboratorul de biochimie, Facultatea de medicina, Bucuresti.

GURBAN, C.; CRISTEA, Elena

Duration of incubation and its influence on the value of the rate of phosphorylation in succinate. Studii cerc biochimie 5 no.3:423-433 '62.

1. Laboratoruș de biochimie, Facultatea de medicina, Bucuresti.

GRIGORESCU, G.; SCHELL, H.D.; BATCU, A.; MOTET-GRIGORAS, D.; CRISTEA, E.;
SANDULESCU, C.

General problems and research methods in biochemistry. Studii cerc
biochimie 5 no.3:457-459 '62.

GURBAN, C.; BATCU, A.; MOTIST-GRIGORAS, D.; CRISTEA, E.; POPESCU, A.;
FILIPESCU, H.; SANDULESCU, C.

Animal biochemistry. Studii cerc biochimie 5 no.3:463-467 '62.

SCHELL, H.D.; IORDACHE, C.; EATCU, A.; CRISTEA, E.; MOTET-GRIGORAS, D.

Medical biochemistry. Studii cerc biochimie 5 no.3:467-473 '62.

MEZINCESCU, M.D.; POPESCU-STEFANESCU, A.; CRISTEA, E.; DINU, I.

Method for the study of contingent variations of the need of nitrogen. Studii cerc biochimie, 5 no.4:527-539 '62.

1. Catedra de chimie biologica I, Institutul medico-farmaceutic, Bucuresti.

GURBAN, C.; BATCU, A.; CRISTEA, E.; POPESCU, A.

Medical biochemistry. Studii cerc biochimie 6 no.4:598-601 '63.

Handwritten mark

GURBAN, C.; BATCU, A.; CRISTEA, E.; FURNICA, M.; POPESCU, A.

Reviews; general problems; research methods. Studii cerc
biochimie 6 no.4:585-588 '63.

GURBAN, C.; BATCU, A.; CRISTEA, E.; TANASESCU, D.; POPESCU, A.;

Animal biochemistry. Studii cerc biochimie 6 no.4:591-598 '63.

CRISTEA, Elena; GURBAN, C.; MIȚU, Ileana

Control elements of succinate oxidation speed in mitochondria of rat liver. Studii cerc biochimie 6 no.4:511-522 '63.

1. Facultatea de medicina, Bucuresti, Laboratorul de biochimie I,

GUREAN, C. [deceased]; CRISTEA, E.

New aspects of phosphorylation oxidation of the succinate in
the mitochondria of rat liver. Studia Univ B-E S Chem B
no.1:421-428 '63

1. Institute of Medicine and Pharmacy, Bucharest.

GURBAN, C. [deceased]; CRISTEA, Elena

Effect of fluoride and adenosinetriphosphate concentration on the speed and efficiency of oxidative phosphorylase in mitochondria. *Studia cerc biochimie* 7 no.1:57-65 '64.

1. Laboratory of Biochemistry I, Department of Medicine, Bucharest.

CRISTEA, Elena

Study of the conditions under which oxalacetate inhibits succinate oxidation by mitochondria. Studii cerc biochimie 7 no.2:173-182 '64.

1. Laboratory of Biological Chemistry, Faculty of Medicine, Bucharest. Submitted February 10, 1964.

MARCOUSO, Inc.; 1977; 1.0; MARCO, festa; CRISTINA. Elena; ENEA.
Christine

The neuromuscular blocking action of some new esters. Stud.
genet. fiziol. no. 5:159-166 '64

NICULESCU, Gh.; MANOLESCU, Em.; MANOLESCU, Alina; CRISTEA, Elena; MURGU,
Lucia

Acute toxicity and neuromuscular blocking effect of strepto-
mycin. Fiziol. norm. pat. 6:507-511 '64.

1. Facultatea de farmacie, Catedra de farmacodinamie, Institutul
medico-farmaceutic, Bucuresti.

RUMANIAIng

Ing Gh. CRISTEA, Collective Farm (Gospodaria agricola colectiva) Sapinta, Sighet District, Maramures Region.

"Experience of the Collective Farm Sapinta, Sighet District, in the Breeding of Young Bulls."

Bucharest, Revista de Zootehnie si Medicina Veterinara, Vol 13, No 5, May 63; pp 45-47.

Abstract: Report on the satisfactory practices on this collective farm numbering about 400 head of cattle in 1962; numerical and financial data about the production, discussion; plans for expansion of production in 1963.

ll/1

CRISTEA, G.

Earth connecting of technological equipment, apparatus and
conduits, to protect it against static electricity discharges.
Rev chimie Min petr 14 no.4:231-233 Ap '63.

CRISTEA, Gh.

Study on the spin electronic resonance spectrum of the V^{+3} ion
in corundum (Al_2O_3). Studia Univ B-B S. Math-Phys 9 no.2:117-
123 '64.

NICULA, A.; CRISTEA, Gh.

Dependence of the temperature of the spin electronic resonance
spectrum of the Cu(II) ion on zeolites. Studia Univ B-B S.
Math-Phys 9 no.2:111-116 '64.

L 39124-66 EWP(j) RM/JW

ACC NR: AP6030342

SOURCE CODE: RU/0003/65/016/003/0125/0133

AUTHOR: Hoffmann, V.; Cristea, I.; Halmagy, I.; Apostol, E.

35
B

ORG: none

TITLE: Recovery of the sensible heat of reaction gases in the manufacturing of acetylene¹⁾

SOURCE: Revista de chimie, v. 16, no. 3, 1965, 125-133

TOPIC TAGS: acetylene, natural gas, ethylene, hydrocarbon, methane, oxidation

ABSTRACT: The authors discuss the preparation of acetylene from natural gases by electric arc cracking and by partial oxidation, with special attention to the best possible utilization of the energy consumed during these processes. Some data are given for a method allowing the partial recovery of some of this energy, namely the injection of additional liquid hydrocarbons into the hot cracked gases, yielding an additional quantity of acetylene plus ethylene. The data were obtained in a semi-industrial Rumanian installation for electrothermic methane cracking. This work was carried out at Chemical Plant, Risnov. Orig. art. has: 13 figures and 13 formulas. [Based on authors' Eng. abst.] [JPRS]

SUB CODE: 07, 21 / SUEM DATE: none / ORIG REF: 003 / SOV REF: 001
OTH REF: 002

ms
Card 1/1

0918 1065

CRISTEA, I., ing.; FIORBA, N., ing.

Adhesives based on polyvinyl acetate in emulsion. In: *lomonuui* 14
no.8:302-310 Ag '63.

MUNTEANU, S.; LITARCZEK, G.; CRISTEA, I.; GIOBANU, M.

Peridural anaesthesia in general surgery. Rumanian med. rev.
7 no.3:74-82 Ja-Mar'64.

*

CRISTEA, Ion I.

SURNAME (in caps), Given Names

Country: Rumania

Academic Degrees: --

Affiliation: --

Source: Bucharest, Comunicarile Academiei Republicii Populare Romine,
No 4, 1961, pp 399-407.

Data:

" A Type of Integral Related to the Stieltjes Integral."

CRISTEA, Ion I.

SURNAME, Given Names

Country: Rumania

Academic Degrees: -not given-

Affiliation: -not given-

Source Bucharest, Comunicarile Academiei Republicii Populare Romine, Vol XI,
No 12, 1961, pp 1443-1450.

Data: "On the Equation fir the Continuity of Fluid Movements."

CRISTEA, Ion, I.

Continuity equation of fluid flow. Cbmunicarile Ar 11 no.12:
1444-1450 D '61.

1. Comunicare prezentata de C. Iacob, membru corespondent al
Academiei R.P.R.

CRISTEA, Ion I.

Two extensions of the Riemann and Lebesgue integrals. Pt. 2. Studii
cerc mat 13 no.3:459-478 '62.

S/044/63/000/001/019/053
A060/A000

AUTHOR: Cristea, Ion I.

TITLE: On steady-state spatial motions of fluids in barotropic processes

PERIODICAL: Referativnyy zhurnal, Matematika, no. 1, 1963, 56, abstract 1B261
(Studii și cercetări mat. Acad. RPR, 1962, v. 13, no. 1, 155 - 171
Rumanian; summaries in Russian, French)

TEXT: The equations of motion and the equations of continuity are transformed into a special system of curvilinear coordinates. On the assumption that vortex lines are perpendicular to flow lines, and the energy function is independent of one of the curvilinear coordinates q_3 , a class of fluid motions is found such that on every surface $q_3 = \text{const}$ the flow is represented alike, and along each of the vortex lines the mechanical characteristics are the same.

M. I. Gurevich

[Abstracter's note: Complete translation]

Card 1/1

RUMANIA

CRISTEA, I., Dr, BARA, C., Dr, CERNI, I., Dr, and SECASIU, V., Dr. Work performed at the Regional Veterinary Laboratory (Laboratorul Veterinar Regional), Sf. Gheorghe and at the Clinical Laboratory of the Unified Hospital of Sf. Gheorghe (Laboratorul Clinic al Spitalului Unificat din Sf. Gheorghe).

"Mixed Toxic Food Infection with Ci. botulinum and Ci. perfringens."

Bucharest, Microbiologia, Parazitologia, Epidemiologia, Vol 8, No 1, Jan-Feb 1963, pp 49-54.

Abstract [Authors' English summary modified]: Describes 19 cases of mixed botulin-perfringens food poisoning occurring after eating a pig's blood sausage conserved in jars filled with lard. The biochemical and pathogenic characteristics of the Ci. perfringens strain isolated are described.

Includes 1 table and 18 Rumanian references.

1/1

CRISTEA, I.

ROMANIA

LITANOWSKI, G., MD; CRISTEA, I., MD.

Anaesthesia and Resuscitation Section of the "Fundeni" Clinical
Hospital (Sectia de anestezie-reanimare a Spitalului clinic
"Fundeni"); Scientific Director: Professor Voinea Marinescu,
Corresponding Member of the Academy of the R.P.R. - (for all)

Bucharest, Viata Medicala, No 21, 1 Nov 63, pp 1501-1504

"The Side Effects of Certain Drugs Used in Anaesthesia-
Resuscitation."

CRISTEA, Ion I.

A plane motion with constant vorticity for a fluid perfectly
incompressible. Studii cerc mat 14, no.2: 253-306 '63.

MATEI, Augustin I.; DIACONESCU, I. (Bucuresti); CRISTEA, Ion I.
GURAMULTA, I.; BALFINETU, D. M. (Bucuresti)

Solved problems. Gaz mat B 15 no. 6:253-260 Je '64.

CRISTEA, I.; MIHAI, F.; POP, Gr.

Contributions to the catalyzer research on the heterogeneous
catalytic synthesis of vinyl acetate. Studii chim Timisoara 10
no.1:101-113 Ja-Je '63.

CRISTEA, Ion I.

An extension of conformable transformations in tridimensional space. Studii cerc mat 16 no.8:1033-1057 '64.

CRISTEA, Victoria; CRISTEA, Ion I.

Changing integration variables in a surface integral. Gaz mat
fiz 69 no.10:372-379 0 '64.

CRISTEA, Ion I.

Recurrent sequences, Gaz mat B 16 no.1:1-10 Ja '65.

RUMANIA

CRISTEA, N., Veterinarian, of the Baia Mare Veterinary Circumscription (Circumscripția Veterinară Baia Mare).

"Puerperal Hemoglobinemia in Cows."

Bucharest, Revista de Zootehnie și Medicina Veterinară, Vol 13, No 6, Jun 63, pp 82-85.

Abstract: Describes the diagnosis of what is believed to be the first case of puerperal hemoglobinemia in cows in Rumania. It was diagnosed on the basis of the clinical symptoms, blood level changes, and the results of treatment. The disease was first noticed ten days after the cow had given birth. A detailed description of the symptoms and therapeutic measures is given. Contains 1 Hungarian and 8 Rumanian references.

1/1

MLL

✓ The thermal coefficient of oxygen consumption, a biochemical index for the adaptation of grains of the various wheat varieties to the conditions of the environment. Eugen Lucovschi and Lucia Cristea (Inst. Biochem. Acad. Sci., Bucharest, Rumania). *Comun. acad. rep. populare Romine* 5, 1467-71(1955). -- Four summer and 5 winter varieties of wheat were tested, and both groups have a different thermal coeff. of O₂ consumption. This is due simply to the various temp. conditions the wheat encounters in the fields. The results agree with the values for the temperature coeff. of respiration for leaves of summer and winter wheats as obtained by Sokolova. (*Problemy Biokhimi*; *Mikrobiolog. Biologii*, Moscow-Leningrad 1, 119 (1949)).
Werner Jacobsen

2/

CRISTEA, L.

TECHNOLOGY

Periodicals: PETROL SI GAZET. Vol. 9, no. 10, Oct. 1958

CRISTEA, L. Some reflections on the methods of estimating the natural-gas reserves. p. 435

Monthly List of East European Accessions (EEAI) LC, Vol. 8, No. 2,
February 1959, Unclass.

CRISTEA, MIRCEA

DECEASED

1964

1926-1963

Electronics
Spark Plugs

DEUTSCH, R.V.; CRISTEA, M.

Contributions to the study of the elliptic polarization
phenomenon of weak magnetohydrodynamic waves. Studia Univ
B-B S. Math-Phys 9 no.2:95-99 '64.