

CRETU, D.; APETREI, C.

Modeling exciters of synchronous machines. p. 695

STUDII SI CERCETARI DE ENERGETICA. Bucuresti, Rumania. Vol. 7, no. 4, 1957

Monthly List of East European Accession. (EEAI) LC, Vol. 8, no. 9, ^{Sept.} 1959
Uncl.

CRETU, D.: ~~SECRET~~ C.

TECHNOLOGY

PERIODICAL: STUDII SI CERCETARI DE ENERGETICA. Vol. 8, no 4, 1958

APETREI, C.: CRETU, D. Asymmetric working conditions of synchronous generaticus in the case of local power-producing systems. p. 599

Monthly List of East European Assessions (EEAI) LC, Vol. 8, no 4
April 1959, Unclass.

CRETU, D.; SPRINCEANA, II.

Modeling primary machines with the help of electric machines. p. 168.

ELECTROTEHNICA. (Asociația Stiintifică a Inginerilor și Tehnicienilor din
România și Ministerul Energiei Electrice și Industrii Electrotehnice)
București, Rumania, Vol. 7, no. 5, May 1959

Monthly list of East European Accessions (EEAI) LC, Vol. 8, no. 8, Aug. 1959

uncl.

BALA, G.V.; BIRGAUANU, M.E.; CRETU, D.V.

Study of some special operating systems of high-power synchronous
motors. Rev electrotechn energet 8 no.1:77-97 '63.

L 35207-66

ACC NR: AP6026876

SOURCE CODE: RU/0022/66/011/002/0080/0086

AUTHOR: Zbegan, Vasile (Engineer; Professor emeritus); Jura, Cornel (Engineer); Giurconiu, Mihai (Engineer); Gretu, Gheorghe (Engineer); Mirel, Ion (Engineer)

19
5

ORG: Polytechnical Institute, Timisoara (Institutul politehnic)

TITLE: Study of the water clarification process in cylindrical suspensional settling tanks

SOURCE: Hidrotehnica., gospodaria apelor, meteorologia, v. 11, no. 2, 1966, 80-86

TOPIC TAGS: water purification, surface water, water purification equipment, water tank

ABSTRACT: A description of the surface water treatment process used in Timisoara. The operation, involving use of cylindrical suspensional settling tanks, is described, and its effectiveness from economic-technical points of view presented. Orig. art. has 4 figures and 5 tables. /Based on authors' Eng. abstract/ /JPRS: 36,452/

SUB CODE: 13 / SUBM DATE: ---Jul65 / ORIG REF: 005 / SOV REF: 002 /

OTH REF: 001

Card 1/1

UDC: 628.36:663.63

0176 2631

CRETU, I.

SURNAME (in caps); Given Names

Country: Rumania

Academic Degrees: -Geologist-

Affiliation: I.S.E.M. - / not identified/

Source: Bucharest, Stinta si Tehnica, No 6, Jun 1961, pp 6-7.

Data: "Discovery of Iron Deposits at Capusu-Mic."

CRETU, I.

Determination of the time in which a depression per-
turbation is transmitted to the outward boundary of a
synclinal watery zone. Bul Inst Petrol Rum 9: 57-67
'63.

STATICESCU, P., ing.; OLTEANU, Gh., dr.; MATEI, A., ing.; MUNTEANU, E.
ing.; LITSCH, M., ing.; POPA, I., ing.; RACZ, Z., ing.;
COSMA, I., ing.; LENGYEL, V., ing.; LUNGU, C., ing.;
SINGER, M., ing.; CRETU, I., ing.; GRIGORAS, M., ing.;
CRACIUNESCU, C., ing.; COLIS, I., ing.; BACOS, M., ing.;
ALEXANDRESCU, T., ing.; BERZOVAN, I., ing.; TOARNICZSKI, E., ing.;
OCHIANA, S., ing.; MOCANU, E., ing.

Results obtained with different varieties in sugar-beet
growing. Ind alim 14 no.9:342-348 S'63.

1. Fabrica de zahar Giurgiu (for Matei, Munteanu).
2. Fabrica de zahar Bod (for Lutsch, Popa).
3. Fabrica de zahar Tg. Mures (for Racz, Cosma, Lengyel).
4. Fabrica de zahar Roman (for Lungu, Singer).
5. Fabrica de zahar Bucecea (for Cretu, Grigoras).
6. Fabrica de zahar Oltenia (for Craciunescu, Colis).
7. Fabrica de zahar Banat (for Bacos).
8. Fabrica de zahar Arad (for Alexandrescu, Berzovan).
9. Fabrica de zahar Ludus (for Toarniczski, Ochiana).
10. Fabrica de zahar Sascut (for Mocanu).

CRETU, I.

"Anatomy of big business" by L.C.Park, F.W.Park. Reviewed by
I.Cretu. Probleme econ 16 no.3:146-151 Mr '63.

CRETU, I.

On the possibility of establishing the connection between the development time of the phenomena on a hydrointegrator and th development time of the phenomena in the deposit subject to modeling. Petrol. gaze 15 no. 7:356-359 J1 '64.

CRETU, I., Ing.

Determining the permeability of the layer and the bottom static pressure on the basis of pressure variation measurements after flow modification in a well. Petrol si gaze 15 no. 9:493-497 S 16%.

CRETU, I., ing.

Influence of porous medium anisotropy on the pressure
restoring curves in wells as reflected by the hydrointegrator.
Petrol si gaze 15 no.10:556-559 0 '64.

CRETU, I., ing.

Hydraulic models of the flow of compressible liquids through
porous media. Petrol si gaze 15 no.12:652-656 D '64.

L 33042-66

ACC NR: AP6024215

SOURCE CODE: RU/0007/65/016/009/0477/0481

AUTHOR: Cretu, I.--Kretsu, I. (Engineer)

17
B

ORG: none

TITLE: Processing of some oil well data obtained by flow variation

SOURCE: Petrol si gaze, v. 16, no. 9, 1965, 477-481

TOPIC TAGS: petroleum engineering, petroleum industry

ABSTRACT: The author describes the processing and interpretation of pressure measurements obtained according to a procedure described in an earlier paper through the lowering or raising of the flow in 4 wells in the Ploiesti Trust. The processing of the data allows a common basis for the evaluation of the results regardless of whether the flow was raised, lowered or eliminated; in all the cases studied, the graphs showed a straight portion which allowed calculation of the effective permeability of the afferent zone of the well.

Orig. art. has: 4 figures, 3 formulas and 4 tables. [JPRS]

SUB CODE: 13, 05 / SUBM DATE: none / ORIG REF: 004 / SOV REF: 001

Card 1/1

CRETU, M., and others.

Production of a roof with thin shells from prestressed concrete at the Dacia Textile Factory in Bucharest; planning, execution, testing. p.427.

REVISTA CONSTRUCTIILOR SI A MATERIALELOR DE CONSTRUCTII. (Asociatia Stiintifica a Inginerilor si Tehnicienilor din Romania si Ministerul Constructiilor si al Materialelor de Constructii)
Bucuresti, Rumania
Vol. 11, no. 9, Sept.1959.

Monthly list of Eastern European Accession Index (FEAI) LC vol. 8, No. 11
November 1959
Uncl.

BORZA, Stefan, ing.; CRETU, Mihai

Generating set productivity is increasing. Constr Buc 14 no.654:2
21 JI '62.

1. Fabrica de ciment "Victoria socialista", Turda.

CRETU, Radu, technician

Development of the 7 Noiembrie, Sighisoara Plant. Constr Buc
15 no.726:2 7 D '63.

CRETU, Radu

The twentieth year; the Bircea Plant of Construction Materials.
Constr Buc 16 no.745:1 18 Ap '64.

1. Tehnician, Fabrica de materiale de constructie, Bircea.

CRETU, Radu, correspondent

A new construction unit for the Hidromecanica Metallurgic Plant,
Brasov. Constr Buc no.756:1 4 July '64.

SAGUIO, I., ing.; MIRCESCU, V., ing.; GRETO, H., ing.

Determination of the efficiency of centricleaners in manu-
facturing sulfate pulp from reed. Gel hirtie 13 no.1:17-25 Ja 1964.

BORZA, Rodica; SIMIONESCU, M., planificator; TOMESCU, I.; AVADANII, Ioan
CRETU, Radu, tehnician

Successes in socialist competition. Constr Buc 16 no.742:
1 28 March 1964.

1. Subredactia voluntara de la Turda (for Borza).
2. Subredactia voluntara de la Ploiesti (for Tomescu).
3. Presedintele comitetului sindicatului de la grupul de santiere nr.3, Roman (for Avadanii).

STANCIU, B., technician; DEBENY, Zoltan, technician; CRETU, Radu, technician; GORGAN, M.; SIMIONESCU, Mircea, economist.

Successes in socialist competition. Constr Buc 16 no. 737:1

22 P. 4.

PETRE, H., correspondent; FERARU, I., correspondent; BARBALATA, St., correspondent;
CRETU, Radu, correspondent; DIMA, Dumitru, correspondent; HARMOS, Gavril,
correspondent; HOTUPAN, Florian, correspondent; BAGDAZAR, Aurel,
correspondent

May 1st, the builders report to the party. Constr Buc 17 no.799:1,3
30 Ap '65.

MINCULESCU, M.; BIRZU, I.; CRINU, S.; IOVANESCU, F.; IONESCU, D.;
LUPULESCU, V.; MICHEL, J.; PAULON, S.; ROTARU, A.; RUSOVICI, I.;
ZAHARIA, C.

The first focus of infantile leishmaniasis identified in the
Rumanian People's Republic. Stud. cercet. inframicrobiol., Bucur.
6 no.3-4:595-603 July-Dec. 1955.

(LEISHMANIASIS, in inf. & child
in Rumania, pathol. & epidemiol.)

ILESCU, C.C., prof.; ROMAN, L., dr.; DOMOCOS, G., dr.; CRETU, Silvia,
statisticiana

Analysis of the morbidity of the patients hospitalized in the
Clinica de cardiologie Ascar. Med. intern., Bucur 12 no.12:1823-
1832 D '60.

1. Lucrare efectuata la Clinica de cardiologie Ascar, director:
prof. C.C.Iliescu.

(CARDIOVASCULAR DISEASES statistics)
(HYPERTENSION statistics) (HEART DEFECTS, CONGENITAL statistics)

ILIESCU, C.C., prof.; ROMAN, L., dr.; DOMOCOS, G., dr.; CRETU, Silvia

Analysis of the morbidity of patients examined at the ASCAR polyclinic.
Med. intern. 14 no.4:541-548 My '62.
(CARDIOVASCULAR DISEASES) (MORBIDITY)

ILIESCU, G.C., prof.; MIHAILESCU, V.V.dr.; ENESCU, R. dr.;
PASTIU, V. dr.; SVETZ, M.dr.; SBENGHE, S.dr.; ARON, L., dr.;
CLEJ, V.dr.; MALITCHI, E., dr.; PIRLOG, C.dr.; RADESCU, R., dr.;
ILIESCU, A., dr.; CHIRILIA, O., dr.; CRETU, S.

Natural history of arterial hypertension. Statistical observations
on 3800 cases followed up for at least 10 years.
Med inter 15 no. 5:563-571 My '63.

1. Lucrare efectuata la ASCAR, Bucuresti.
(HYPERTENSION)

CRETU, Teodor, ing.

Rational and careful management of railway sleepers to have good
railroads. Rev sailor Ser 10 no.7:367-368 J1 '62.

1. Inspector de control L.

SCHIOPU, U.; GRETU, T.; ZLATE, M.

On some psychological conditions of accidents in the mining industry. Rev psihologie 11 no.1:105-117 '65.

1. Chair of Psychology of the University of Bucharest. Submitted July 30, 1964.

CRETU, T.; CONSTANTINESCU, P.

Centenary of the University of Bucharest, scientific session of
the section of psychology. Rev psihologie 11 no.1:139-141 '65.

CRETU, Viorel

Graphic and analytic standards of the cutting of sealing
washers. Industria uscara 11 no.6:308-316. Je '64.

CRETU, Valeria A. and PUSCARU, Dumitru

"The Content in Vitamin A of the Main Vegetal Associations from the Bucegi Mountains." Comun. Acad. Rep. Populare Romine 5, 103-8 (1955).

The content was studied of carotene and vitamin A of the principal weeds and of the hay collected on the meadows of the Bucegi Mountains. Results and methods of analysis are given, and practical conclusions drawn.

RUMANIA / Chemical Technology, Chemical Products and Their Application. Pharmaceuticals. Vitamins. Antibiotics. H-17

Abs Jour : Ref Zhur - Khimiya, No 5, 1959, No. 16510

Author : Szanto, A.; Szatay, V.^A; Constantinescu, V.

Inst : Not given

Title : Experience of the Kluzhskaya Oblast Apothecaries in the Preparation of Injection Serums

Orig Pub : Farmacia (Roman), 1957, 5, No 5, 442-455

Abstract : The sanitary and economical feasibilities of the preparation of injection serums and solutions in apothecaries depends exclusively on the appropriate development of optimum methods employed in their preparation under the conditions of limited equipment availability in local apothecaries. In conjunction with the detailed description of requirements imposed by the above products, the article describes in detail methods involved in the

Card 1/2

H-56

RUMANIA / Chemical Technology, Chemical Products and Their
Application. Pharmaceuticals. Vitamins. Antibiotics.

H-17

Abs Jour : Ref Zhur - Khimiya, No 5, 1959, No. 16510

preparation of such solutions. It also lists the
necessary requirements pertaining to further improve-
ment of the equipment. -- E. Natkhan

Card 2/2

CRETULESCU, C.

Contributions to carrying out a Rumanian process for briquetting slag.

p. 77. REVISTA MINELOR. (Asociata Stiintifica a Tehnicienilor din Romania, Ministerul Industriei Carbonei si Directia Generala a Minelor si Metalurgiei Neferoase) Bucuresti. Vol. 7, no. 2, Feb. 1956

So. East European Accessions List Vol. 5, No. 9 September, 1956

CRETULESCU, C.

CRETULESCU, C. Contributions to the problem of the use of coal as domestic fuel.
p. 376.

Vol. 7, no. 8, August 1956
REVISTA MINELOR
TECHNOLOGY
Bucuresti, Rumania

So: East European Accession, Vol. 7, no. 3, March 1957

R/007/61/012/002/003/003
D226/D304

AUTHORS: Crețulescu, C., Doctor of Engineering, and Alterescu, I.

TITLE: Qualitatively equating Soviet lubricants with Rumanian lubricants

PERIODICAL: Petrol și gaze, vol. 12, no. 2, 1961, 83-85

TEXT: Based on the requirements of Russian lubricant specialists, the Oficiul de stat pentru energie (State Office of Energy) has issued the comparative recommendations of Soviet and Rumanian lubricants. A "Tabelă comparativă a lubrifiantilor din URSS cu lubrifiantii din RPR" (A Comparative Table of Soviet Lubricants with Rumanian Lubricants), worked out by Doctor of Engineering, C. Crețulescu, Engineers, R. Schmidt, V. Boice and M. Popa, was published for the first time in "Petrol și gaze", no. 10-11, 1951, pp 23-24. The corresponding lubricants are provided with the numbers of the quality standards of the respective countries, i.e. GOST and STAS. A separate column indicates the Rumanian lubricants which replace the Soviet lubricants in cases where the Soviet lubricant has no equal

Card 1/2

Qualitatively equating...

R/007/61/012/002/003/003
D226/D304

Rumanian lubricant of the same quality. The lubricants examined in the table are: 1) Lubricants for automobiles and tractors; 2) Lubricants for diesel engines; 3) Lubricants for special engines; 4) Lubricants for steam engines; 5) Lubricants for turbines; 6) a - Lubricants for refrigerators; b - Lubricant for rolling mills; c - Lubricants for presses; d - Lubricants for ships; e - Lubricants for (MVP) devices with a freezing point of -60°C ; f - Technical vaseline lubricant; 7) Industrial lubricants; 8) Lubricants for driving gears; 9) Consistent lubricants and 10) Various vaselines. There is 1 table.

Card 2/2

CRETULESCU, C., dr., ing.

Studies on the substitution of an oil harmless to skin for the oil
Mr-102 STAS 2800-51 used in metalwork. Petrol si gaze 12 no.9:
421-423 S. '61.

(Metalworking lubricants)

CRETULESCU, C., dr. ing.; SCHEIANU, I., ING.

Contributions to the production of a special lubricant for
bearings. Constr mas 15 no.5:382-383 My '63.

CRETULESCU, Constantin, dr. ing.

Rumanian-made lubricants as substitutes for lubricants
manufactured in East Germany, Czechoslovakia, Poland,
and Hungary. Constr mas 15 no. 9:629-647 S '63.

1. Ministerul Minelor si Energiei Electrice.

CRETULASCU, G., dr. ing.

Work control of lignite briquettes produced by the cold method and
without pressure. Rev. min. 15 no. 10:430-492 0 '64.

CRETULESCU, Constantin

Analytical criteria for eliminating from operation the waste oils from turbines and transformers. Constr mas 17 no.1:27-30 Ja '55.

CREUTZFELDT, W.

Czechoslovakia/Pharmacology. Toxicology. Anticoagulants V-5

Abstr Jour : Ref Zhur-Biol., No 5, 1958, No 23334

Author : Creutzfeldt W.

Inst : Not given

Title : Does heparin Have the Same Effect, as ACTH
[Adrenocorticotrophic Hormone] on the Supra-
renal Cortex?

Orig Pub : Acta neuro-psych., 1955, 12, No 3, 225-233

Abstract : It was found, that hypophysectomized rats, on
in contrast to normal rats endured heparin better,
while heparin had a reactivating effect on the
atrophied suprarenal cortex. An ACTH administration
on in hypophysectomized rats caused an increase
in suprarenal weight and reestablished the nor-
mal histological picture of the suprarenal cor-
tex. Bibliography - 20 titles.

Card 1/1

GREVAR, M.

A conference on the use of technical aids in the education of adults. p. 2.

TESLA. (Jugoslovensko drustvo "Nikola Tesla" za unapredenje nauke i tehnike)
Beograd, Yugoslavia. Vol. 6, no. 3, May/June 1959.

Monthly List of East European Accessions (EEAI) LC, Vol. 8, no. 8, Aug. 1959.

Uncl.

CRHA, M. ; Cepek, V.

Photoelastic investigation of rail sections of the T and A shape. p. 267

INZENYRSKE, STAVBY. (Ministerstvo stavebnictvi) Praha, Czechoslovakia.
Vol. 7, no. 7, July 1959

Monthly List of East European Accessions (EEAI) LC Vol. 8, no. 11, Nov. 1959
Uncl.

CRHA, Milos

Present state and prospects for production of phosphoric fertilizers
in Czechoslovakia. Agrochem 2 no.2:33-36 '62.

1. Severoceske chemicke zavody Lovosice.

Re

in

in

CRHA, Milos

Freezing method of NPK-1 combined fertilizer production. Chem prum
14 no.4:172-177 Ap '64.

1. Severoceske chemicke zavody, Lovosice.

SLAVICEK, Ivan; CRHA, Miroslav

Electronic instruments with capacity feelers for explosion
danger areas in chemical plants. Chem prum 12 no.3:131-135
Mr '62.

1. Vyzkumny ustav mikromolekularni chemie, Brno.

L 38590-66 EWP(v)/EWP(t)/ETI/EWP(R)/ENP(h)/ENP(l) IJP(c) JD/HW

ACC NR: AP6027701.

SOURCE CODE: CZ/0034/66/000/001/0023/0029

AUTHOR: Zamyslovsky, Zdenek (Engineer); Crha, Vladislav (Engineer) 47

ORG: College of Mining, Ostrava (Vysoka skola banska) 4 B

TITLE: Evaluation of methods for the calculation of rolling pressures based on the theory of plasticity in the blooming mill rolling process

SOURCE: Hutnicke listy, no. 1, 1966, 23-29

TOPIC TAGS: rolling mill, plasticity, pressure measurement, metal rolling

ABSTRACT: Both experimental and theoretical methods for the determination of the mean pressure of the rolls are discussed. Methods of Celikov, Sims, Crowan, Ekelund, and Geleji are evaluated. New formulas of Dinnik and Lugovsky are analyzed. Computed pressure values are compared to the values obtained by experimental measurements on a blooming mill. Although Lugovsky's equation needs some adjusting it is the best one available at present. Orig. art. has: 8 figures, 3 formulas and 5 tables.
[Based on authors' Eng. abst.] [JPRS: 34,519]

SUB CODE: 13, 20 / SUBM DATE: none / ORIG REF: 002 / SOV REF: 016

Card: 1/2 5

UDC: 621.944.3.412

20859

Z/034/61/000/006/002/002
E073/E335

152220

125 1142 1908

AUTHOR: Crha, Zdeněk, Engineer

TITLE: Chromium Carbides in WC+Co Carbides

PERIODICAL: Hutnické listy, 1961, No. 6, pp. 421 - 424

TEXT: A number of new carbides are being introduced for cutting tools. For instance, WC+Co with a high Co content or with a low Co content and further grades of sintered carbides for rough machining of large components and machining with special steels, particularly austenitic steels (Ref. 7: D. Friedl, Zpráva ZPP Tv 3090, 1958). A further new type of carbide (Hle) for machining miniature steel components on automatic machine tools is being introduced, which is characterised by the fine grain of the carbide components, the average grain size of the tungsten carbide being about 1 to 1.15 μ . In the initial charge very fine grain raw materials are used or additional carbides, which in most cases prevent grain growth, particularly of the tungsten carbide (Ref. 8: Z. Crha, Technické informace 1957, Vol.3, 8, UTEIN, Prague). Chromium carbide has favourable properties
Card 1/7

20859

Z/034/61/000/006/002/002
E073/E335

Chromium Carbides

from the point of view of increased resistance to oxidation. The author aimed at utilising these properties. In most cases, the chromium carbide was not the basic component but was added as an admixture. The main tests with chromium carbide were carried out for the carbide G4 containing 20% Co and Cr_3C_2 with contents of 5, 15, 30 and 50%, respectively. Additions of over 5% chromium carbide proved unsuitable due to greatly reduced bending strength but carbide containing 5% Cr_3C_2 had good physical and mechanical properties. Metallographic tests revealed that increasing chromium carbide contents led to decreasing grain size of the tungsten carbide. In the further experiments, sintered carbides containing 5, 10 and 20% Co were investigated with additions of 1, 2 and 5% Cr_3C_2 and 0.5% Cr_3C_2 for a sintered carbide with 5% Co. The dependence of the hardness on the content of Co and Cr carbide is given in Fig. 3; for all the tested grades the hardness increased with increasing chromium-carbide content. This is particularly

Card 2/7

20859

Z/034/61/000/006/002/002

E073/E335

Chromium Carbides

true for carbides with higher Co contents. In the same way as hardness, the bending strength increases at first with increasing chromium carbide, reaching a certain maximum, and then decreases rapidly, as can be seen from Fig. 4, which shows the bending strength as a function of the Cr_3C_2 and Co contents.

The bending-test results show that for sintered carbides with higher Co contents the chromium addition can be within wider limits than for sintered carbides with low Co contents. In the latter, an addition of 0.5% chromium carbide leads to a drop in the bending strength by about 2%, whilst an addition of 1% chromium carbide leads to a drop by about 10%. Fig. 5 indicates the average grain size of the tungsten carbide in a carbide with 20% Co as a function of the chromium-carbide content. In machining tests the wear-resistance of chromium-containing carbides was higher than that of those without chromium. Fig. 7 shows the wear (in mm) of carbides with 10 and 5% Co as a function of the Cr_3C_2 content. Excitation tests were carried out at 900 °C for 1 hour and the gain in weight of carbide

Card 3/7

20859

Chromium Carbides

Z/034/61/000/006/002/002
E073/E335

specimens with 20% Co with various chromium-carbide contents is plotted in Fig. 8. In the conclusions it is stated that considerable improvements can be obtained in the properties of sintered carbides as a result of adding chromium carbide, provided the ratio of the Cr_3C_2 content to the Co content is correctly chosen. There are 8 figures and 8 references: 4 Czech and 4 non-Czech. The English-language references is: Ref. 6 - J. Hinnlber, O. Rüdiger, Symposium on Powder Metallurgy, 1954. Special Issue, No. 58 - The Iron and Steel Institute, London, 1956, pp. 305-310. X

ASSOCIATION: Výzkumný ústav pro práškovou metalurgii, Šumperk
(Powder Metallurgy Research Institute, Šumperk)

SUBMITTED: December 16, 1960

Card 4/7

20859

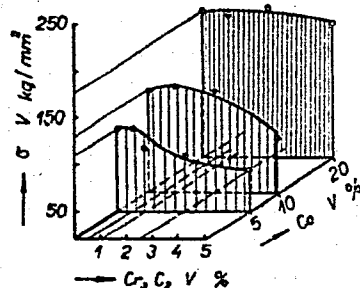
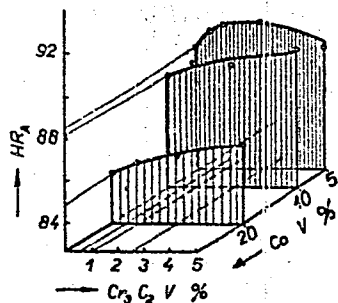
Z/054/61/000/006/002/002

2075/E555

Chromium Carbides

Fig. 5:

Fig. 4:



Card 5/7

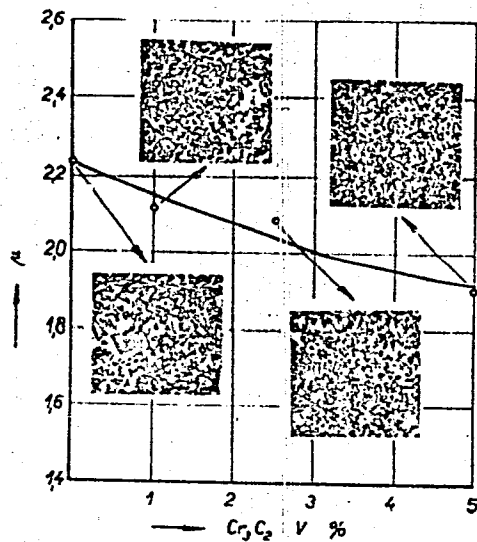
20859

Z/054/61/000/006/002/002

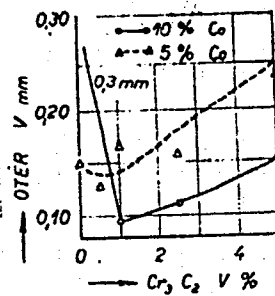
E073/E335

Chromium Carbides

Fig. 5:



7:

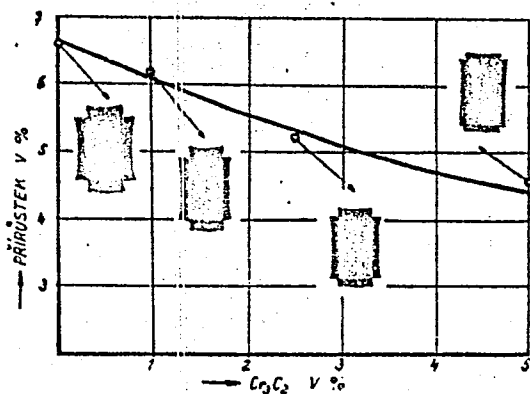


Card 6/7

Chromium Carbides

20859
Z/034/61/000/006/002/002
E073/E335

Fig. 8:



Card 7/7

S/123/62/000/013/005/021
A004/A101

AUTHORS: Crha, Zdeněk, Vícha, Vladimír

TITLE: Method of manufacturing tools with cermet bits

PERIODICAL: Referativnyy zhurnal, Mashinostroyeniye, no. 13, 1962, 13, abstract
13B86 (Czechoslovakian Patent No. 99008, 15.03.61)

TEXT: For joining two cermet layers - of higher strength and wear resistance - and their subsequent soldering onto a steel holder, the authors suggest to sinter in a mold under pressure the bits of cermet material which possesses a high wear resistance with stronger carbides of the same WC + Co series in the form of powder. Also additions of chromium, tantalum, niobium, molybdenum, boron and vanadium carbides are applicable. The sinter temperature depends on the composition of the powdery mixture. During the sintering, the binding ductile metal of the powder fuses together with the binder of the bit, owing to which a high strength of the joint and the absence of a sharply expressed surface of separation are ensured.

V. Sheynfinkel' ✓

[Abstracter's note: Complete translation]

Card 1/1

Card 1/2

I. 12822-65

ACCESSION NR: AP4044989

and the addition of chromium and titanium carbides has a wear resistance 50-100% higher than that of the WC-Co carbide without additions.

ASSOCIATION: none

SUBMITTED: GO

ATD PRESS: 3111

ENCL: 00

SUB CODE: MM

NO REF SOV: 000

OTHER: 000

CRHA, Zdenek, inz.; NOVAK, Jaromir, inz.

New results of the research on sintered carbides for mine tools. Hut listy 19 no.1:34-37 Ja'64.

1. Vyzkumny ustav pro praskovou metalurgii, Sumperk (for Crha).
2. Ustav pro vyakum rud, Praha, (for Novak).

CRHAK, L.

Anthropological researches in Czechoslovak Silesia. Tr. f om the Czech.
p. 91

CZLOWIER W. CZASIE I PRZESTRZENI
Vol. 2, no. 2, 1959
Warsaw, Poland

Monthly List of East European Accession (EEAI) LC, Vol. 9, no. 1, Jan. 1960

Uncl.

RUMANIA / Chemical Technology. Chemical Products and H
Their Applications. Glass.

Abs Jour: Ref Zhur-Khimiya, 1959, No 4, 12583.

Author : Tentulescu, D.; Tentulescu, L.; Cricoveanu, M.
Inst : Not given.
Title : Study of Melting of Slags and Rocks in Continuous
Process Furnaces for the Production of Slag Cotton.

Orig Pub: Rev. constructiilor sci mater. constr., 1958, 10,
No 5, 280-206.

Abstract: Results of activities in substituting a contin-
uously-operating furnace for a cupola furnace in
the production of slag cotton are described. --
From the authors' resume.

Card 1/1

46

CRIGHEL, E.; BROSTEANU, R.; NESTIANU, V.

Electroencephalographic research on cortical reactivity:
variations of the curve of the latent period of cortical
reactions to intermittent luminous stimuli, rôle of
experimental spasmodic attacks and barbituric sleep. p. 1013.
Academia Republicii Populare Romine. COMUNICAIILE.
Bucuresti.
Vol. 5, no. 6, June 1955.

SOURCE: East European Accessions List (EEAL) Library of Congress,
Vol. 5, No. 12, December 1956

CRIGHEL, E

RUMANIA/Human and Animal Physiology - The Nervous System.

V-8

Abs Jour : Ref Zhur - Biol., No 4, 1958, 18564

Author : E. Crighel, R. Brosteanu and V. Nestianu

Inst : -

Title : Electroencephalographic Examination of Cortical Reactivity.
The Effect of Chlorpromazine.

Orig Pub : Commun. Acad. RFR, 1956, 6, No 7, 959-963

Abstract : In the first five minutes after cats were injected intra-
venously with chlorpromazine, a reduction was observed in
the latent period of cortical responses to a rhythmic
light, and then a brief increase in the latent period.
During convulsive seizure the changes in reactivity were
the same as in the control animals.

Card 1/1

CRIGHEL, E.

HUMANIA/human and Animal Physiology - The Nervous System.

V-8

Abs Jour : Ref Zhur - Biol., No 4, 1958, 18563

Author : E. Crighel, R. Brosteanu and V. Nestianu

Inst : -

Title : Electroencephalographic Examination of Cortical Reactivity in States of Increased Excitability.

Orig Pub : Commun. Acad. RPR, 1956, 6, No 12, 1401-1406

Abstract : After cats were injected with caffeine, and with pervitin particularly, a sudden increase was observed in the average values of the latent period of cortical responses to stimulation with a blinking light. The standard deviations also increased noticeably.

Card 1/1

EXCERPTA MEDICA SER 8 Vol 12/2 Neurology Feb 59

829. ELECTRO-ENCEPHALOGRAPHICAL RESEARCH ON THE REACTIVITY OF THE CORTEX. II. EFFECT OF POST-CONVULSIVE INHIBITION OR INHIBITION IN THE COURSE OF SLEEP INDUCED BY BARBITURATES ON THE LATENCY PERIODS OF THE CORTICAL RESPONSES TO INTERMITTENT LIGHT STIMULATIONS - Cercetări electroencefalografice asupra reactivității corticale. Nota II. Acțiunea inhibiției postconvulsive și din timpul somnului barbituric asupra latențelor răspunsurilor corticale la stimuli luminoși intermitenți - Crighel E., Broșteanu R. and Nestianu V. - STUD. CERC. NEUROL. 1957, 2/1 (53-67) Graphs 3 Tables 4

After an experimental convulsive fit, the latency periods of the cortical responses to intermittent light stimulation become shorter. Sometimes, a shortening of this latency period is followed by a lengthening before the initial values are reached again. During sleep induced by barbiturates, the same diminution in the latency period values is observed. This phenomenon, observed during inhibition states, is believed to be due to a simplification of the cortical circuits which play a role in the response to the intermittent light stimulation, a simplification produced by the predominant inhibition of the intercalated neurons of the cortex.

Crighel - Bucharest

Country : RUMANIA
Category: Human and Animal Physiology. Nervous System.
Cerebral Cortex

T

Abs Jour: RZhBiol., No 19, 1958, 89210

Author : Crighel, E.; Nestianu, V.
Inst : Rumanian Academy, Institute of Neurology.
Title : Electroencephalographic Investigation of the Trigger
Mechanism of the Experimental Convulsive Attack
Produced by Pentamethylenetetrazol

Orig Pub: Studii si cercetarii neurol. Acad. RPR, Inst. neurol.
1957, 2, No 2, 205-216

Abstract: Investigation of the electrical activity of the
cerebral cortex of a cat by stimulation with an
interrupted light stimulus demonstrated that fol-
lowing the injection of pentamethylenetetrazol the

Card : 1/2

T-91

CRIGHEL, E.; NESTIANU, V.

Electroencephalographic studies of cortical reactivity; type of cortical response to intermittent light stimuli. Bul. Stiint., sect. med. 9 no.1: 211-228 1957.

(CEREBRAL CORTEX, physiology

response to intermittent light stimuli, eff. of caffeine & amphetamine, EEG study, in cats)

(CAFFEINE, effects

on cortical responses to intermittent light stimuli, EEG study, in cats)

(AMPHETAMINE, effects

same)

EXCERPTA MEDICA Sec 2 Vol 13/5 Physiology May 60

2467. EEG STUDIES ON CORTICAL REACTIVITY IN MAN - Cercotări EEG
asupra reactivității corticale la om - Crighel E. and Neșțianu V. -
STUD. CERCET. NEUROL. 1958, 3/2 (175-185)

The method used (previously described by the authors) consists in measuring the latent period between stimulation by light and the evoked cortical response. The latent periods found ranged from 33.75 and 72 msec. (mean 50.01 msec. standard deviation 6.31 msec.). These values are larger than those found by the same investigators in the cat. This is probably due to the existence of a greater number of intercalary neurons in man, while the high degree of functional lability of these neurons may be responsible for the large standard deviation.

Voiculescu - Bucharest (11, 8*)

EXCERPTA MEDICA Sec 2 Vol 12/7 Physiology July 59

3026. ECG STUDY OF THE MECHANISM OF PRODUCTION OF CONVULSIVE ACTIVITY OF THE CEREBRAL CORTEX - Recherches électrographiques sur le mécanisme du déclenchement de l'activité convulsive de l'écorce cérébrale - Crighel E. and Nestiano V. Inst. de Neurol., Acad. de la République Populaire Roumaine, Bucarest - J. PHYSIOL. (Paris) 1958, 50/4 (799-808) Tables 1 Illus. 3

In the normal, non-anaesthetized cat, convulsions were induced by i. p. injection of 60 mg./kg. of pentetrazole or i. v. injection of 200-300 mg./kg. of caffeine Na benzoate in 10 ml. saline. The cortical electrical activity and the reactivity were registered. Other experiments were carried out on the 'isolated brain' preparation. Before the onset of the convulsive seizure an acceleration and a loss of the capacity to assume the rhythm of the luminous stimulation were noted; the latent period increased by 40-50%. Two modes of appearance of the convulsive activity were observed, one being common to both pentetrazole and caffeine and the other peculiar to pentetrazole. A considerable modification of cortical reactivity is thus present before the actual seizure. In the pre-seizure stage more neurons become active; this does not yet constitute a seizure, the latter being the result of hyperactivity of each neuron, leading to synchronization of their electrical activities, without the necessity for a synaptic interrelation between the various active neurons.

Meyer-Oulif - Paris (II, 8*)

ENCERETA MEDICA Sec 8 Vol 12/11 Neurology Nov 59

5599. WALKING APRAKIA (Russian text) - Crigel E. and Arseni C. - ZH. NEVROPAT. I PSIKHIAT. 1958, 58/8 (926-928)

Walking apraxia, which is often accompanied by standing apraxia, is not due to cerebellovestibular disturbances and is not a consequence of damage of the frontal lobe as observed in intracranial hypertension. It was only diagnosed in the presence of frontal tumours. In 69 out of 165 examined patients with unilateral or bilateral damage of the frontal brain, the tumour was localized in the frontal lobe or its vicinity. From these 69 patients, walking disturbances of a cerebellar and vestibular type were found in 26, whereas walking apraxia was only observed in 4. Examinations of 3 patients revealed that these disorders differ from cerebellar disorders in that they are bilateral and show no cerebellar symptoms. The main signs are disturbances of standing, and the peculiarities of this type of standing, by which they distinguish themselves from labyrinthine disturbances. Another characteristic is that they develop in patients with psychical disorders and depend on disturbances of the cortical functions, which are localized in the frontal lobes.

Dimitrijević - Sarajevo

CRIGHEL, E.; UNGHER, Julia

Considerations on abdominal epilepsy. Romanian M. Rev. 3 no.3:
77-80 J1-S '59.

1. "I.P.Pavlov" Institute of Neurology of the R.P.R. Academy,
Bucharest, Director Acad.: A. Kreindler.
(EPILEPSY)
(ELECTROENCEPHALOGRAPHY)

CRIGHEL, E.

MISON-KRIGEL, Nella [Mison-Grighe], E.; KONSTANTINESKU, Yelizabeta
[Constantinesco, E.]; KRIGEL, Ye. [Grighe], E.]

Effect of the preconvulsive functional stage on the development of
the convulsive seizure and on the biochemical modifications induced
by the latter. Ukr.biohim.zhur. 31 no.6:834-848 '59.

1. Nevrologicheskiy institut I.P. Pavlova AN Rumyansko Narodnoy
Respubliki, Bukharest. (MIRA 13:5)

(CONVULSIONS)

CRIGHEL, E.; UNGHER, J:

The effect of auditory stimulation on bioelectrical assimilation
of the rhythm of intermittent light stimulation. Rev. sci. med.
5 no.3/4:133-138 '60.

(ELECTROENCEPHALOGRAPHY physiol.)
(REFLEX CONDITIONED)

KREINDLER, A.; GRIGHEL, E.; NESTIANU, V.

Studies on the mechanism of the appearance of secondary words
evoked by barbiturates. Rev. sci. med. 5 no.3/4:187-193 '60.
(BARBITURATES pharmacol.) (CEREBRAL CORTEX pharmacol.)

KREINDLER, A.; CRIGHEL, E.; NESTIANU, V.

The phenomenon of enhancement of the secondary elicited response during deep barbiturate sleep. Rumanian M Rev. no.1:179-180 Ja-Mr '61.

1. The "I.P. Pavlov" Institute of Neurology, R.P.R. Academy.
(CEREBRAL CORTEX physiology) (SLEEP physiology)
(BRAIN STEM physiology)

CRICORLU, I ; LUFU, A.

Study on the pelletization of plumbous concentrates. p. 337.

Academia Republicii Populare Romine. Centrul de Cercetari Metalurgice.
STUDII SI CERCETARI DE METALURGIE. Bucuresti, Romania. Vol. 4, no. 3, 1959.

Monthly List of East European Accessions (EEAL) LC, Vol. 9, No. 2,
January 1960.

Uncl.

CRINGU, Aurora, asist. univ. (Bucuresti)

Land development of the city of Medgidia. Natura Geografie
17 no.2:35-39 Mr-Apr '65.

VASILESCU, C. prof. [deceased]; CRINGU, M.; PASCU, F.; RAU, C.

Correlation between the colposcopic aspect and the results of histopathological examination of biopsy samples of the cervix uteri. *Rumanian M. Rev.* 3 no.4:72-73 O-D '59.
(CERVIX UTERI, pathology)

ROMANIA

CRINGU, M., MD.

"Giulesti" Hospital for Women's Diseases (Spitalul de Femei
"Giulesti") - Director: Dr. I. Gaina.

Bucharest, Viata Medicala, No 22, 15 Nov 63, pp 1543-1546

"Early Diagnosis of Cervix Uteri Cancer."

HUTTMANN, A.; CINDEA, V.; CRINTEA, R.; ENYEDI, C.; STEFANESCU, C. R.

Humoral changes in Sokolski-Bouillaud's rheumatism. Probl.
reumat., Bucur. 3:134-210 1955.

(RHEUMATIC HEART DISEASE

Bouillaud's dis., eff. on body fluids)

(BLOOD, in various dis.

Bouillaud's dis., coagulation, proteins &
sedimentation rate.)

(URINE

proteins & thyroxin, in Bouillaud's dis.)

(PROTEINS

in blood & urine in Bouillaud's dis.)

CZECHOSLOVAKIA/Cultivated Plants. Technical Plants. M
Oil and Sugar Bearing Plants.

Abs Jour : Ref Zhur-Biol., No 15, 1958, 68315

of the experiment, are presented in the
article. -- D. A. Garbuzova.

Card : 3/3

SAVIUC, Victor; SABATIN, Igor; CRISAN, Alexandru

Electric parameters of the aluminum-steel twisted cables. Studii
fiz tehn Iasi 10 no.2:177-194 '59. (EEAI 9:9)
(Electric cables) (Impedance (Electricity))
(Aluminum) (Steel) (Torsion)

NEGRU, Alexandru; CRISAN, A.

Contributions to the knowledge of the mycologic flora of the Rarau
Mountains. Studii biol Cluj 10 no.2:203-215 '59. (KEAI 10:2)

1. Universitatea "Babes-Bolyai," Cluj, Catedra de botanica
(ROMANIA--FUNGI)

SAVIUC, Victor; SABATIN, Igor; CRISAN, Alexandru

Electric parameters of steel multiple-wire conductors. Studii fiz
tehn Iasi 11 no.1:135-147 '60. (EEAI 10:3)

(Electric conductors) (Electric wire)
(Steel)

VICIU, E., dr.; DULGHERU, Carmen, dr.; RUSU, M., dr.; CRISAN, Aurelia, chim.;
GANE, Nadia, chim.; BULHAG, C., chim.

Functional examination of the liver in cardiac insufficiency.
(Considerations on dysproteinemia, serum transaminases, ammonemia
and other function tests). Med. intern. 14 no.1:41-55 Ja '62.

1. Lucrare efectuata in Clinica a V-a medicala "V. Roaita".
(HEART FAILURE, CONGESTIVE physiology)
(LIVER FUNCTION TESTS) (BLOOD PROTEINS chemistry)
(TRANSAMINASES blood) (AMMONIA blood)

BECHET, Maria; CRISAN, Aurelia

Phyllosticta Pers., a new species for Rumanian mycoflora. *Studia
biol Cluj* 14 no.2:167-176 '63.

1. Chair of Botany, "Babes-Bolyai" University, Cluj.

ILIE, Ion; RASCA, Dumitru; CRACIUN, Ion, economist; SIRIOPOL,
Telemac; BARBALATA, Stanciu; CRISAN, Bazil, ing.;
CIRSIOIU, Valentin; GHINEA, Vasile, correspondent

Enthusiastic socialist competition. Constr Buc 16
no. 750:1 23 May '64.

1. The Galati Branch of the Voluntary Editorial Office
of "Constructorul" (for Siriopol, Barbalata).
2. Head of the Department of Production, Regional Trust
for Housing Construction, Hunedoara (for Crisan).

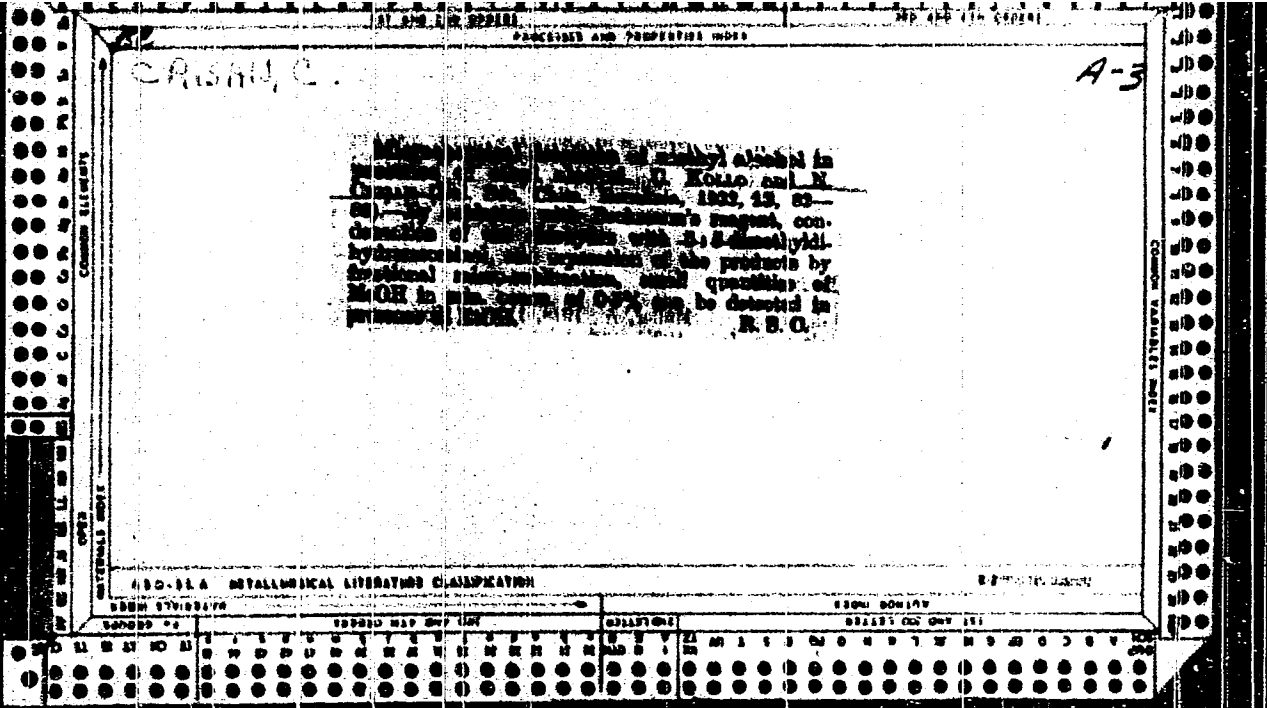
CRISAN, C. AND OTHERS.

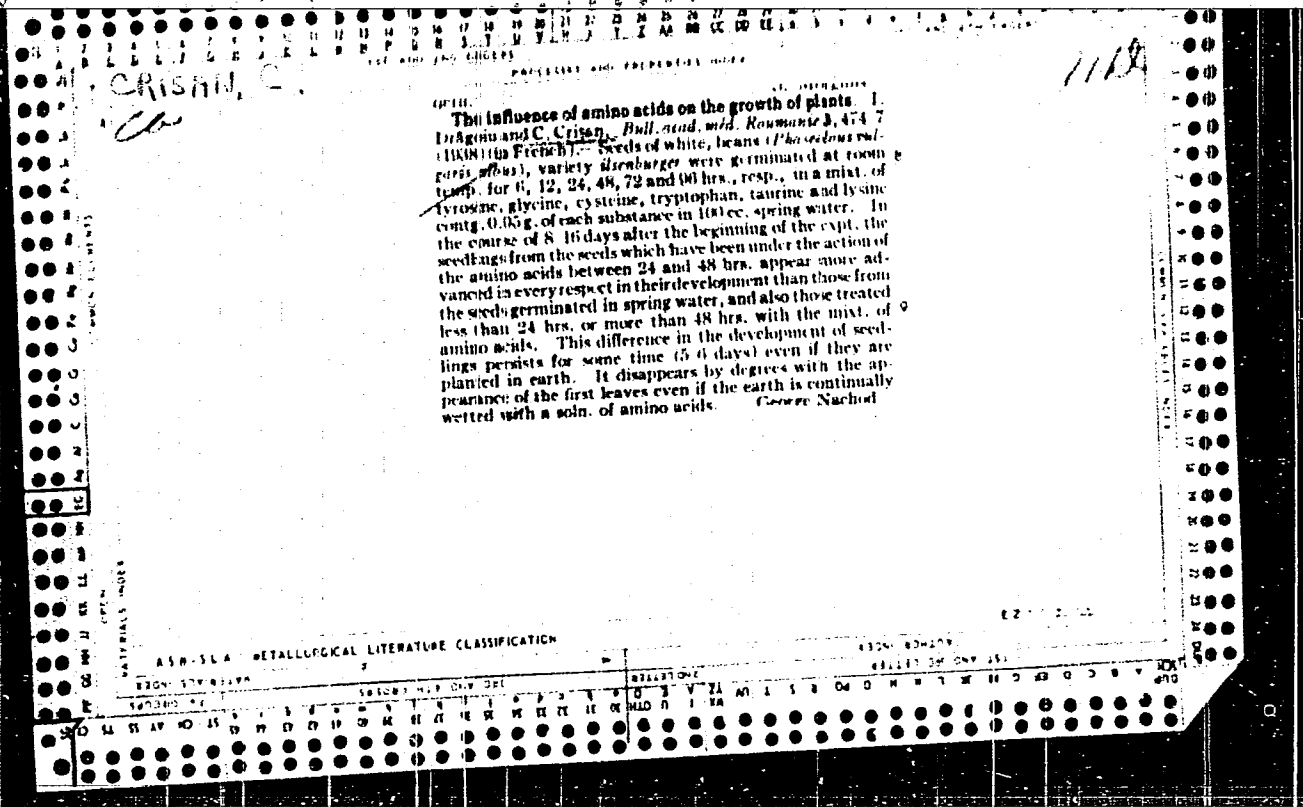
Increase of vitality of poultry by means of heterospermia. p. 137.

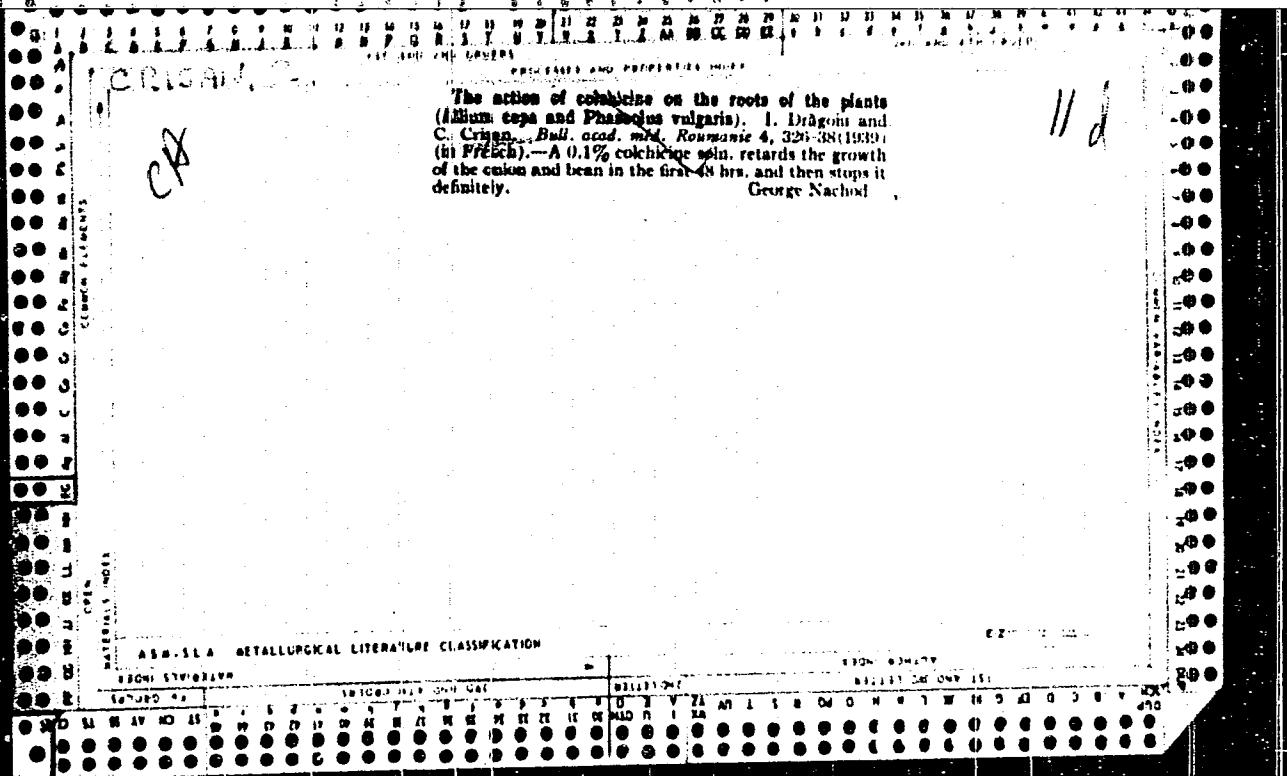
Academia Republicii Populare Romine. Filiala Cluj. STUDII SI CERCETARI DE BIOLOGIE. Cluj, Rumania. Vol. 9, no. 1, 1958.

Monthly List of East European Accessions (EEAI) Vol. 8; no. 7, July 1959.

Uncl.







CRISAN, AND OTHERS.

Exposure of the mitotic capacity of accessory cells of the principal stomach glands of a dog with the aid of colchicine. p. 599.
(COMUNICARILE. Rumania. Vol. 5, no. 3, Mar. 1955)

SO: Monthly List of East European Accessions (EEAL) LC, Vol. 6, no. 7, July 1957. Uncl.

RUMANIA/Chemical Technology. Chemical Products and Their
Application, Part 3. - Aromatic Substances,
Volatile Oils, Perfumery and Cosmetics.

H

Abs Jour: Referat. Zhurnal Khimiya, No 21, 1958, 71875.

Author : C. Crisan.

Inst :

Title : Industrial Yield of Volatile Oils from Some Local
Medicinal Plants.

Orig Pub: Farmacia (Romin.), 1957, 5, No 5, 422-428.

Abstract: The following volatile oils were extracted by
steam distillation (the mean yield is expressed
in %): Ol. Angelicae - 0.08, Ol. Chamomillae -
0.027, Ol. Heleni - 0.48, Ol. Melissae - 0.026,
Ol. Absinti - 0.145, Ol. Coriandri - 0.11 to
0.53, Ol. Hyscopi - 0.52 from dry plants and

Card : 1/2

ROMANIA/Chemical Technology. Chemical Products and Their
Application, Part 3. - Aromatic Substances, Volatile
Oils, Perfumery and Cosmetics.

H

Abs Jour: Referat. Zhurnal Khimiya, No 21, 1958, 71875.

0.15 from green plants, Ol. Juniperi baccae -
0.98, Ol. Menthae aquaticaе - 0.48, Ol. Menthae
pulegi - 0.49, Ol. Menthae piperitae - 0.99 from
whole plants and 0.50 to 0.60 from stems, Ol. Origanum
vulgare - 0.15, Ol. Thymum serpyllifolium - 0.12. A
brief description of some extraction methods is given
and literature data showing the importance of the
achieved yields to secure the requirements of the
country in volatile oils are presented.

Card : 2/2

ROMANIA

MURESAN, I., Professor; CALOGERA, C.; MARCU, M.; POP, Z.; CRISAN, G.;
BIHOIU, I.; RAICU, I., Extern.

Surgical Clinic II in Timisoara (Clinica II-a Chirurgicala,
Timisoara) - (for all)

Timisoara, Timisoara Medicala, No 1, Jan-Jun 63, pp 27-32

"Our Experience in the Surgery of the Hydatid Cyst of the Liver."
(Report presented to the Timisoara Society of Medical Sciences -
Surgery Section - 5 April 1961.)

7

4520
Replacement of malleable cast iron by a cast iron modified
by magnesium. *Acad. rep. popul. Romine, Seria 2, vol. 4, 130-131 (1959).* — An industrial process is outlined which makes possible a const. temp. of nodular-graphite cast iron. Various compns. and structural properties are tabulated.
Felicitas D. Goodman
DR

CRISPAN, G.

CRISPAN, G.
SURNAME, Given Names

Country: Russia

Academic Degrees: /not given/

Affiliation: /presumably the No 2 Surgery Clinic (Clinica II de Chirurgie), Timisoara/

Source: Timisoara, Timisoara Medicala, No 2, Jul-Dec 60, pp 33-37

Date: "Experience of the Timisoara No 2 Surgery Clinic in Connection with the Therapy of Breast Cancer."

Co-authors:

HALOGHEA, G.
HELM, W.
CRISPAN, G. /degrees not given; affiliations presumably No 2 Surgery Clinic, Timisoara/

see 11180

CRISAN, G.

RUMANIA

PAUNESCU-PODEANU, A., MD, Professor; CRISAN, G.

1. Editor-in-Chief of Timisoara Medicala Review of the Institute of Medicine and of the UNION of the Societies of Medical Sciences in the R.P.R. (Revista Institutului de Medicina si a Unimii Societatilor Stiintelor Medicale din R.P.R.)

Timisoara, Timisoara Medicala, Vol. VII, No 2, Jul-Dec 62, pp 1-5.

"Anti-onzyme substances in the modern treatment of acute pancreatitis."