

- RUMANIA/Magnetism - Ferrites and Ferrimagnetism

F-6

Abs Jour : Ref Zhur - Fizika, No 8, 1958, No 18205

characteristics of the initial nickel ferrite. They have noted tentatively a considerable variation in the magnetic properties of the copper ferrite in mixed ferrites which are rich in copper, as a function of the residual porosity.

Card : 2/2

22

RUMANIA/Magnetism - Ferrites and Ferrimagnetism.

F

Abs Jour : Ref Zhur Fizika, No 10, 1959, 22841

Author : Labusca, Elena; Constantinescu, Florica

Inst : -

Title : Change in the Magnetic Properties of Mixed Cu Plus Ni Ferrites as a Function of the Relative Contents of the Copper Ferrite and the Nickel Ferrite

Orig Pub : Rev. phys. Acad. RPR, 1958, 3, No 2, 141-150

Abstract : An investigation was made of the system of mixed Cu-Ni-Zn ferrites. The extreme points were chosen to be those of Cu-Zn ferrite with a composition 20% CuO, 30% ZnO and 50% Fe₂O₃, which has a magnetic permeability approximately 500²-700 and losses of approximately 0.1 - 0.2, and of a nickel-zinc ferrite with composition 15% NiO, 35% ZnO, and 50% Fe₂O₃, with an approximate permeability of 40 and losses of approximately 0.001 - 0.002. It was established that the magnetic properties of the ferrites

Card 1/2

- 50 -

RUMANIA/Magnetism - Ferrites and Ferrimagnetism.

F

Abs Jour : Ref Zhur Fizika, No 10, 1959, 22841

of the intermediate composition change in a monotonic manner, Data are also given on the influence of porosity on the permeability of the investigated ferrites.
-- Ye.Z. Mazel'

Card 2/2

COUNTRY : Rumania H-13
CATEGORY :
ABS. JOUR. : AZKhim., No. 21 1959, No. 75501
AUTHOR : Constantinescu, E., Catoiu, E., and Ornstrat, L.
INSTR. : Not given
TITLE : Experimental Studies on the Production of Soft
Magnetic Ferrites
ORIG. PUB. : Rev Chim, 9, No 7-8, 391-393, Discussion 393
(1958)
ABSTRACT : The authors present results from experiments on
the production of magnetic ferrites (MF) for fil-
ter chokes used in telephone communications in
the frequency range 8-100 kc. The effect of the
chemical composition and degree of purity of
the starting material, its uniformity, type of
thermal treatment and of the atmosphere of the
furnace in which the treatment is carried out on
the magnetoelectric properties of the Mg-Zn and
Ni-Zn MF have been investigated. The best
CARD: 1/3

COUNTRY : Rumania
CATEGORY : H-13
ABS. JOUR. : RZKham., No. 21 1959, No. 75501
AUTHOR :
INST. :
TITLE :
ORIG. PUB. :
ABSTRACT : results were obtained with Ni-Zn MF, the permeability of which attained 1,000 μ . It has been found that MF of identical composition can exhibit different characteristics depending on the type of process used. The contact surface between the oxide particles plays a decisive role. The specific surface area of the powders was found to be an objective parameter which permits the evaluation of the activity of the materials used. Measurements of the specific surface area, made

CARD: 2/3

183

COUNTRY	: Rumania	H-13
CATEGORY	:	
ABS. JOUR.	: RZKhim., No. 21 1959, No.	75501
AUTHOR	:	
INST.	:	
TITLE	:	
ORIG. PUB.	:	
ABSTRACT	: with a fluorometer, have shown that its value varies for the different powders, depending on the processing to which they have been subjected, within the limits 5,000-12,000 cm ² /gm. Mechanical mixing of the oxide powders assures uniformity of the mixtures, and its use is therefore recommended in place of the heretofore used thermal decomposition of mixtures of sulfates. Ya. Matlis	
CARD:	3/3	

CONSTANTINESCU, F.; CALUGAREANU, G., acad. pro.; GHICA, A., acad. prof.;
ANGHELUTA, TH., prof. dr. CLIMESCU, I., prof. dr.

Contributions to the elementary theory of generalized functions.
Studi Univ B-B S. Math-Phys 9 no.2:142-143 '64.

1. "Babes-Bolyai" University, Cluj (for Calugareanu) 2. University
of Bucharest (for Ghika). 3. Polytechnic Institute, Cluj (for
Angheluta). 4. Polytechnic Institute, Iasi (Climescu).

CONSTANTINESCU, Florin

Relations between the coefficient of two polynomials whose roots
separate. Cas pro pest mat 89 no.1:1-4 F '64.

1. Institute of Technology, Cluj, Str.Amurg, No.10, Rumania.
Submitted November 2, 1960.

L 37984-66

ACC NR: AP6026873

SOURCE CODE: RU/0022/66/011/002/0057/0066

AUTHOR: Friscu, Radu (Engineer); Constantinescu, Florin (Engineer)

ORG: Hydropower Study and Planning Institute (Institutul de studii si proiectari hidroenergetice)

TITLE: Secul-Resita buttress dam

SOURCE: Hidrotehnica , gospodarierea apelor, meteorologia, v. 11, no. 2, 1966, 57-66

TOPIC TAGS: waterway engineering, geology

ABSTRACT: The authors discuss the Secul-Resita dam, built in 1961-63 to increase the regulated flow of the Birzava River and restrict its maximum discharges. After discussing the geological characteristics of the area, the authors describe the construction elements and design solutions used as well as the actual execution of the project. Orig. art. has: 11 figures and 4 tables. [Based on authors' Eng. abstract]

[JPRS: 36,452]

SUB CODE: 13, 08 / SUBM DATE: --Nov65 / ORIG REP: 001

Card 1/1/116P

UDC: 627.824.4

0916 2628

L 39015-66

ACC NR: AP6029591

SOURCE CODE: HU/0022/66/011/004/0177/0183

AUTHOR: Priscu, Radu (Engineer; Specialist); Petcu, Andreea (Engineer; Designer);
Constantinescu, Florin (Engineer; Designer)

¹⁴
E

ORG: Hydropower Study and Planning Institute (Institutul de studii si proiectari hidroenergetice)

TITLE: Behavior of the Secul-Resita Dam in the first two years of operation

SOURCE: Hidrotehnica, gospodaria apelor, meteorologia, v. 11, no. 4, 1966, 177-183

TOPIC TAGS: waterway engineering, concrete

ABSTRACT: The authors describe the measuring apparatus installed at the Secul-Resita buttress dam and present the results of the measurements taken during the first two years of operation of the dam. The factors observed are: evolution of temperatures in the concrete, amount and distribution of subpressure, displacement of building blocks in the crest, and opening of the contraction joints. Orig. art. has: 8 figures. [Based on authors' Eng. abst.] [JPRS: 36,844]

SUB CODE: 13 / SUBM DATE: --Dec65

Card 1/1 *1112P*

0917 06 86

PAVEL, D., prof. dr. ing.; CONSTANTINESCU, Fl., ing.

Hydrotechnical improvement works on the upper course of the
Birsava River. Hidrotehnica 6 no. 5:153-163 My '61.

CONSTANTINESCU, Florin

Fixation of a variable in a distribution of two variables.
Studii cerc mat 15 no. 5:653-659 '64.

ACCESSION NR: AP3023243		R3/0012/64/000/005/0781/0787	
AUTHOR: Constantinescu, Fl. (Doctor, Colonel, Candidate of medical sciences); Segall, S. (Doctor, Lieutenant Colonel)		12 B	
TITLE: Importance of vocal audiometry in the examination of persons working in noisy environment			
SOURCE: Revista sanitara militara, no. 5, 1964, 781-787			
TOPIC TAGS: otolaryngology, working condition			
ABSTRACT: The authors made a comparative study of vocal versus tonal audiometry in the examination of the hearing of workers working in noisy surroundings, and found that a combination of the two types of testing is superior to tonal testing alone. They suggest that workers for noisy environments be selected on the basis of audiometric tests, and that their hearing be rechecked every year. Three case studies are included.			
ASSOCIATION: none			
SUBMITTED: 00	ENCL: 00	SUB CODE: IS, GO	
NR REF SOV: 000	CTER: 000	JPRS	
Card 1/1 KC			

RUMANIA

FLORESCU, V., Colonel, Medical Corps; CONSTANTINESCU, Fl., Colonel, Medical Corps, Dr. in Medical Sciences; and TAPLIGA, M., Lieutenant-Colonel, Medical Corps.

"Considerations on the Fungal Infection of the Ears"

Bucharest, Revista Sanitara Militara, Vol. 62, No. 3, May-June 1966; pp 579-582

Abstract: Of 27 patients in 15 months, 7 were men, 16 women and 4 children aged 6 to 15; all of them had chronic otitis externa and media revealed to be due to fungi: culture showed *Aspergillus niger* in 21, *A. fumigatus* in 3, *A. flavus* in 2, *Candida albicans* in 1 of the children. Nystatin and older-type dye treatment was generally quite successful. Manuscript received 2 October 1965.

1/1

CONSTANTINESCU, G.

"Accidental and permanent errors in the measurement of horizontal and sloping distances."
p. 26. (Revista Padurilor, Vol. 67, No. 9, Sept. 1952, Bucuresti).

SO: Monthly List of East European Acquisitions, Vol. 3, No.2 Library of Congress Feb 54 Unol

CONSTANTINESCU, Gr.; OTELEMANU, Rodica

Contributions to the study on rutoside determination. I. Quantitative microdetermination of rutoside and quercetol in the presence of both substances. II. Quantitative macro- and microdetermination of rutoside in Fagopyrum sp. Rumanian M. Rev. 1 no.3:81-82 July-Sept 57.

(VITAMIN P, determ.

rutin & quercetol in presence of both substances, technic)

(VITAMIN P, determ.

rutin in Fagopyrum, quantitative micro- & macrodeterm.)

CRETA, G.; CONSTANTINESCU, Gh.; LENE, I.

Experimental studies on some steam ejectors. Bul St si Tehn
Tim 7:139-149 '62.

RUMANIA / Cultivated Plants. Fruits, Berries.

M-7

Abs Jour : Ref Zhur - Biologiya, No 13, 1956, No. 58764

Author : Konstantinescu, G.; Oshlobyanu, M.

Inst : Rumanian Agronomical Institute

Title : Theories Concerning Green Pruning, Pinching and Nipping of the Vine

Orig Pub : Biol. Zh. Akad. RNR, 1956, 1, No 2, 187-194

Abstract : Observations conducted by the Scientific Research Agronomical Institute in various regions of RPR in 1949-1953 showed that the appearance of embryos of racemes on the sprout does not cause an intensive consumption of assimilation products before blooming. The growth slows up with the beginning of blooming. The greatest amount of withering away of buds takes place during the budding phase or at the beginning of the phase when the flowers open. Nipping, carried out

Card 1/3

RUMANIA / Cultivated Plants. Fruits, Berries:

M-7

Abs Jour : Ref Zhur - Biologiya, No 13, 1953, No. 58764

antasiatica Negrul), pinching is an absolute necessity.
The yield increment in this case is 9.1-9.4%. --
I. K. Fortunatov

Card 3/3

G. KONSTANTINESCU

RUMANIA/Cultivated Plants - Fruits. Berries.

M.

Abs Jour : Ref Zhur - Biol., No 4, 1958, 15783

Author : G. Konstantinescu, M. Oshlobyanu

Inst : -

Title : The Grafting and Pinching Out of Grape Vines.
(Prishchipyvaniye i chekanka vinogradnoy lozy).

Orig Pub : Gradina, via si livada, 1956, 5, No 5, 35-38.

Abstract : Tests were conducted in 1949-1953 at 6 viticultural centers. The grafting was done before floescence, during the flowering time, on 2-3 days before the berries ripening began and in the period of termination of shoot growth with 2, 3, 6 and 8 leaves. The pinching out was performed in the middle of the flowering period on the second-third day after the flowers dropped off, up to the period of berry ripening and in the period of shoot growth termination, with 5, 10 and 15 leaves. It is recommended that shoot grafting be done

Card 1/2

144

RUMANIA/General Biology - Genetics.

B-6

Abs Jour : Ref Zhur - Biol., No 15, 1958, 66782

Author : ~~Constantinescu, G., Negreanu, E.~~

Inst : Academy RPR

Title : The Appearance of New Features in Grapes Under the Influence of a Mentor - "Podvoy".

Orig Pub : Bul. stiint. Acad. RPR. Sec. biol. si stiinte agric., 1956, 8, No 3, 657-666

Abstract : Young hybrid grape seedlings were grafted to old vines. The grafted seedlings produced grapes with a different average weight, sugar content, acidity, color and taste. In most cases the difference was a larger growth and bigger fruits that had an increase in their sugar content. The grapes were found to change in color from black to pink and from black to white. One of the root

Card 1/2

RUMANIA/General Biology - Genetics.

B-6

Abs Jour : Ref Zhur - Biol., No 15, 1978, 66782

hybrids first yielded black grapes and later on, white ones. When grafted to wild grape, it again produced black grapes. As a result of this type of grafting to wild stock, the flavor of grapes has been greatly improved.

Card 2/2

- 13 -

RUMANIA/Cultivated Plants. Fruits. Berries.

Abs Jour: Ref Zhur-Biol., No 5, 1958, 20516.

Author : G. Konstantinescu, V. Lezeresku, I. Poyenaru.
Inst : Balcescu Agricultural Institute, Bucharest Scientific
Research Institute.

Title : Biological Criteria for Determining the Initial Moment
of Florescence in the Grape Vine (*Vitis vinifera sativa*).
(Biologicheskiye kriterii dlya opredeleniya momenta nachala
tsveteniya vinogradnoy lozy (*Vitis vinifera sativa*).

Orig Pub: Bul. stiint. Acad. RPR, Sec. biol. si stiinte agric., 1956,
8, No 4, 827-846.

Abstract: The research has been summed up which was conducted in the
ampelographic collection of the Agricultural Institute in
Balcescu and the Scientific Research Institute at Bucharest.
The difference in time for the buds to begin to open was

Card : 1/2

Country : Rumania M
Category : CULTIVATED PLANTS, FRUITS, Berries.
Abs. Jour. : REF ZHUR-BIOL., 21, 1958, NO-96160
Author : Constantinescu, Gh.; Paenaru, I.
Institut. : Sci. Res. Inst. of Agronomy
Title : New Criteria in Applying Preliminary Controls in
Trimming Grape Vines.
Orig. Pub. : An. Inst. cercetari agron., 1956, 23, No.4, 343-
352
Abstract : Experiments were made at the viticultural experi-
mental station of the Institute of Agronomy in
1950-1953 with the dry trimming of grape vines in
order to establish the optimum number of buds to
be left on the vine. To evaluate the experimental
findings indices of equilibrium, self-regeneration
and safety were established. At the Murfatlar
Experimental Station in Constanta Region during
the differential pruning of Shardoné variety con-
taining 14.13 -65.88 buds per 1 vine, comprising
Card: 1/3

Country : M
Category : CULTIVATED PLANTS, FRUITS
Abs. Jour. : REF ZHUR-BIOL .21,1958,NO-90160

Author :
Institut. :
Title :

Orig. Pub. :

Abstract : 46.6-210.75%, the safety index dropped from 8.23 to 1.32. The safety index dropped from 2.58 to 1.63% at Valya Kelugerskaske Experimental Station when the Muscat Ottonel variety dropped from 100 to 196.9%. At Gdobešt Experimental Station when the Riesling variety was loaded with from 57.7 to 129.9 buds, comprising 100.0-233.2%, the safety index was 3.50-3.75 (above the biological equilibrium limit). The application of the equilibrium, self-regeneration and safety indices as a check in

Card: 2/3

Country :

M

Category : CULTIVATED PLANTS, FRUITS

Abs. Jour. : REF ZHUR-BIOL., 21, 1958, NO-96160

Author :

Institut. :

Title :

Orig. Pub. :

Abstract : pruning makes it possible to discover whatever errors have been made and to eliminate these in subsequent work.--I.K. Fortunatov

Card: 3/3

RUMANIA/Cultivated Plants. Fruit Trees. Small Fruit Plants. M

Abs Jour: Ref Zhur-Biol., No 17, 1958, 77861.

Author : Constantinescu, Ghernain; Motoc, Mircea.
Inst :
Title : Use of Hilly Localities for Cultivation of Grapevines
in Rumania.

Orig Pub: Gradina, via si livada, 1957, 6, No 7, 1-9.

Abstract: Highest quality dry, and in particular natural, sweet and semi-sweet wines can be obtained in Rumania only in hilly localities. In these conditions table grapes take longer to ripen, do not suffer from frosts and grey rot and are noted for high commercial qualities. Protection of slopes from erosion, construction of terraces on sharp slopes, distribution of rows across

Card : 1/2

147

ROMANIA/Cultivated Plants. Fruit Trees. Small Fruit Plants.

M

Abs Jour: Ref Zhur-Biol., No 17, 1958, 77861.

the slopes and others are part of the difficulty of assimilating hilly localities into cultivation of grapevines. A summary of the anti-erosion measures are cited in the organization of the hilly territory under grapevines. -- P. Kh. Kiskin.

Card : 2/2

ROMANIA/Cultivated Plants. Fruits. Berries.

M

Abs Jour: Ref Zhur-Biol., No 5, 1958, 20513.

Author : G. Konstantinesku, L. Velyanu, I. Poyemaru.

Inst : Not given.

Title : The Stocks Used in Grape Cultures in the Rumanian People's Republic, and Their Effects on the Adaptability of Grafts, Productivity and Longevity of the Plantings. (Podvoi, primenyayemye pri kul'ture vinograda v RNR, i ikh vliyaniye na prizhivayemost' privivok, urozhaynost' i dolgovechnost' posadok).

Orig Pub: Bul. stiint. Acad. RPR. Sec. biol. si stiinte agric., 1956, 8, No 2, 329-338.

Abstract: Resulting from many years of experience and research at Odobesti, Murfatlar and Dragasani viticultural stations under many soil and climatic conditions prevalent in

Card : 1/3

RUMANIA/Cultivated Plants. Fruits. Berries.

M

Abs Jour: Ref Zhur-Biol., No 5, 1958, 20513.

the Rumanian People's Republic, the following stocks have been studied. Chasselas X Berlandeyeri 41B is characterized by its weak adaptability to a graft, although it provides a rich and hardy yield and the greatest longevity of grape vines, and is recommended for nearly all the soils of the grape raising districts of the RPR. The Teleki 8B, Kober 5BE, Berlandiyeri X Ripariya, Krechunel 2 are characterized by their high degree of adaptability with grafts, high yielding capacity and the longevity of its vines is recommendable for all wine districts of the RPR. The Ripariya X Rupestris 101-14, 3306, 3309, Muravedr X Rupestris 1202 stocks are not acclimatizable to Rumanian climatic conditions. The Ripariya Gluar stocks show a high percentage of graft adaptation, but owing to their short livedness and small yielding capacity of grape

Card : 2/3

CONSTANINESCU, GHERASIM

Studiul insusirilor tehnologice ale solurilor de vita roditoare.

Bucuresti, Rumania - 1957 (Academia Republicii Populare Romine.
Institutul de Cercetari Agronomice. Tratate, monografii, nr. 8)

Monthly list of East European Accessions (EEAI) LC Vol 8, No. 6, June 1959
Uncl.

RUMANIA/Cultivated Plants - Fruits, Berries.

M-6

Abs Jour : Ref Zhur - Biol., No 7, 1958, 30069

Author : Constantinescu, Gh.

Inst : The Agricultural Institute in Bucharest.

Title : The Use of a Mentor on the Grapevine by Means of a Double Green Graft.

Orig Pub : Anua rul Iusrar, stiant. Inst. agron., 1957, 159-166
(Rum.; res. Russ., Fr.)

Abstract : Experiments made by the department of viticulture of the Agricultural Institute in Bucharest have shown that the use of a mentor as a stock and second graft, grafted on- to the insert cutting of a hybrid gives the best results. The mentor effects a modification of the morphological and biological properties of the hybrids.

Card 1/1

RUMANIA/Cultivated Plants - Fruits, Berries.

M-8

Abs Jour : Ref Zhur - Biol., No 9, 1958, 39517

Author : Constantinescu, Gh., Lazarescu, V., Poenaru, I.

Inst : Agronomical Institute.

Title : The Determination of the Date of Grape Blossoming by the Quantity of Leaves and the Length of the Sprouts.

Orig Pub : Gradina, via si livada, 1957, 6, No 5, 32-36.

Abstract : It was found through experiments made by the Agronomical Institute, that in the forest steppe of Bucharest Province (1950-1955), the beginning of grape blossoming is determined by the appearance of 15-22 leaves (the smallest number applies to the Merlot variety and the greatest number was observed on the Clairette and black Kishmish varieties). It is also determined by the development of powerful sprouts 116-168 cm long (168 cm long in the case of

Card 1/2

Country : Rumania M-8
CATEGORY :

ABS. JOUR. : RZBiol., No. ⁸19, 195~~9~~, No. 87267

AUTHOR : Constantinescu, G.; Negreanu, E.
INST. : Rumanian Academy
TITLE : New Promising Hybrids for Rumanian
Viniculture

ORIG. PUB. : Bul. stiint. Acad. RFR. sec. biol. si
stiinte agric. Ser. agron., 1957, 9, No 1,5-17
ABSTRACT : Studies conducted by the Rumanian Academy of
Sciences, of grape hybrids produced during 1948-1953,
have shown that a number of them possess valuable charac-
teristics. In hybrids of valuable varieties having
functionally female type of flowers, there have been
re-established a normal structure of flowers and self-
fertilization. A number of new properties and character-
istics have been found which did not exist in any of the
parent plants. A number of early maturing forms have been
produced. -- I. K. Fortunatov.

CARD:

Country : Rumania M
Category : CULTIVATED PLANTS. FRUITS. Berries.
Abs. Jour. : REF ZHUR-BIOL., 21, 1958, NO-9616
Author : Bordeianu, Teodos; Constantinescu, Gherasim.
Institut. : ---
Title : Achievements in Horticulture and Viticulture in
the RPR during the Past Ten Years Founded on the
Basis of Soviet Experience.
Orig. Pub. : An. Rom.-Sov. Ser. agric., 1957, 11, No.3, 65-73
Abstract : No abstract

Card: 1/1

CONSTANTINESCU, GH.; NEGREANU, F.

Appearance of new characters in grapevines due to the influence of the mentor stock. In French. p. 103.

REVUE DE BIOLOGIE. JOURNAL OF BIOLOGY. (Academia Republicii Populare Romine)
Bucuresti, Rumania. Vol. 3, no. 1, 1958.

Monthly List of East European Accessions (EEAI) LC, Vol. 8, no. 7, July 1959.

Uncl.

KONSTANTINESCU, G., prof.

Observations on variations in grape buds. Agrobiologia no. 3:139-
141 My-Je '58. (MIRA 11:7)

1. Chlen-korrespondent Akademii nauk Rumynskoy Narodnoy Respubliki.
(Grapes)
(Botany--Variation)

FASON, E.; KONSTANTINESKU, G. [Constantinescu, G.]; Prinimali uchastiye:
BLYUMENTAL', M.; FELLNER, M.; ILIYESKU, R. [Iliescu, R.];
GEORGIU, I. [Gheorghiu, I.]

Reactivity of the skin in acute and subacute disorders of cerebral
blood circulation. Nauch. trudy Inst. nevr. AMN SSSR no.1:294-
297 '60. (MIRA 15:7)

1. Klinika nervnykh bolezney Mediko-farmatsevticheskogo insti-
tuta i kollektiv dermatologov Instituta terapii Akademii
Rumynskoy Narodnoy Respubliki, Bukharest.

(CEREBROVASCULAR DISEASE)
(SKIN--INNERVATION)

CONSTANTINESCU, Gherasim, prof. dr.

Table grapes. St si Teh Buc 14 no. 7:16-17 J1 '62.

1. Corresponding Member of the Rumanian Academy.

CONSTANTINESCU, Gh., prof. ing.

A new analytic method for rectifying the limits of agricultural, forest, urban, mining, and oil fields. Rev. geodemie 7 no.4:52-58 '63.

1. Institutul de petrol, gaze si geologie, Bucuresti.

CONSTANTINESCU, Gh., acad.; CONSTANTINESCU, I. Gh.

On the gluco-acidimetric relation in must of grapes and its variation depending on quality and the ecologic and geographical conditions. Communic. file AR 13 no.10:901-908 0 '63.

MORARIU, Tiberiu; CONSTANTINESCU, Gherasim; NEGREANU, Elena;
LAZARESCU, Victor; POINARU, Ilie; ALEXEI, Olga; BOUREANU,
Camelia

"The Guidebook of Rumania." Natura Geografie 12 no. 6:
141-142 N-D '60.

1. Membru corespondent al Academiei R.P.R. Cluj (for Morariu,
Constantinescu.

CONSTANTINESCU, Gh., acad.; CONSTANTINESCU, I. Gh.

Noxious influence of sulfurous (SO and SO₂) gases on grapevines
by the cumulative effect of the carbon black. Comunicarile AR 13
no.7:645-649 JI '63.

1. Institutul agronomic "Nicolae Balcescu" si Institutul politehnic,
Bucuresti.

CONSTANTINESCU, Gherasim, acad.; DONEAUD, Andrei; DRAGOMIR, Elena

Determination of the bioclimatic index value of grapevines
for the main vineyards in Rumania. Studii cerc biol s. bot
16 no. 1:3-16 '64.

1. "N.Balcescu" Agricultural Institute, and Research Institute
of Horticulture and Viticulture, Bucharest.

CONSTANTINESCU, Gherasim, acad.

Variation of the agrobiologic qualities of the fruit-bearing *Vitis vinifera sativa* grape species, depending on the ecologic and geographic conditions in Rumania and on the appearance during the production process. Studii cerc biol s. bot 16 no. 3:187-194 '64.

1. Chair of Viticulture, "N.Balcescu" Agricultural Institute.

CONSTANTINESCU, Gh., acad.; IVORNIC, V.

Microscopic method of recognizing the fertility of grape pollen. Studii cerc biol s. bot 16 no.5:407-412 '64.

1. Chair of Viticulture, "Nicolae Balcescu" Agronomic Institute, Bucharest.

CONSTANTINESCU, G.

Professor Mihail Emil Maurer, 1904-1964. Fiziol. norm. pat.
11 no.1:92-93 Ja-F '65.

MALLER, O., Dr.; ZUBRITZKY, P., dr.; CONSTANTINESCU, G.^A dr.

Therapeutic results of chlorpromazine in psychiatric emergencies.
Med. int., Bucur. 4 no.8:1225-1229 Dec 56.

1. Lucrare efectuata in sectia de psihiatrie a Spitalului nr. 9.
(MENTAL DISORDERS, therapy
chlorpromazine, in psychiatric emergencies, results)
(CHLORPROMAZINE, ther. use
ment. disord., in acute phases, results)

CONSTANTINESCU, G. A.

RUMANIA/Zooparasitology. Parasitic Protozoa.

G

Abs Jour: Ref Zhur-Biol., No 17, 1958, 76910.

Author : Ciuca, M.; Raduzovici, E.; Chelarescu, M.;
Atanasiu, M.; Isfan, T.; Constantinescu, P.; Teriteanu, E.;
Gina, I.; Scariat, M.; Constantinescu, G. Tautu, L.

Inst :
Title : Study of Duration of Infestation of Plasmodium vivax,
Plasmodium falciparum and Plasmodium malariae (Preliminary Report).

Orig Pub: Bul. stiint. Sec. med., 1956, 8, No 2, 549-564.

Abstract: Observations of natural infection were conducted on 105 patients (97 w with Pl. vivax, 7 - with Pl. falciparum and one - with Pl. malariae), and with experimentally-induced malaria in 73 patients (40 - with Pl. vivax, 32 - with Pl. falciparum and one - with Pl. malariae). The duration of infestation with Pl. vivax in various cases was not over 2 years, and with Pl. falciparum - not over a year.

CONSTANTINESCU, G. A., Dr.; PASZTOR, P., dr.; COJOCARU, Lucretia, dr.

Prolapse of gastric mucosa into the duodenum. Med.int.,Bucur.
8 no.5:693-699 Sept 56.

1. Lucrarea s-a executat la Spitalul militar Orasul Stalin si
la Spitalul de stat nr. 1 din Orasul Stalin.

(STOMACH, diseases

prolapse of mucosa into duodenum, diag., fluoroscopy
& x-ray)

HINCU, R., Dr.; PASCU, Alexandrina, dr.; CONSTANTINESCU, Gh., dr.

An epidemic of Q fever outside the zootechnic sector. Med.
int., Bucur. 8 no. 5: 700-710 Sept 56.

1. Lucrare executat in Spitalul militar Orasul Stalin.
(Q FEVER, epidemiol.
epidemic among Rumanian workers housed in dormitory
with a cowherd.)

RUMANIA/Human and Animal Physiology (Normal and Pathological) T-2
Metabolism. Water and Salt Exchange.

Abs Jour : Ref Zhur - Biol., No 11, 1958, 50484

Author : Constantinescu, Gh.

Inst : -

Title : Disturbances of the Osmotic Equilibrium and the Clinical
Symptoms of Hyperhydration and Dehydration.

Orig Pub : Viata noa., 1957, 4, No 6, 3-21

Abstract : No abstract.

Card 1/1

CONSTANTINESCU, G. dr.

FACON, E.; CONSTANTINESCU, Gh. dr.

Occipito-cervical pain syndrome. Med. int., Bucur. 9 no.5:710-724
May 57.

1. Incrare efectuata in Clinica neurologic I. M. F. A Spitalului
nr. 9 si Sectia de neurologie a Spitalului nr. 12.
(NERVES, CERVICAL PLEXUS, diseases
posterior cervical synd.)

CONSTANTINESCU, G

ROMANIA

Ing M. POP, Animal Husbandry Research Institute; Ing M. MACRI, Suceava;
Ing Viorela DINU, Bucharest, and Veterinarian Sanda CONSTANTINESCU,
Galati.

"Artificial Insemination of Hens."

Bucharest, Revista de Zootehnie si Medicina Veterinara, Vol 13, No 4,
Apr 63; pp 45-52.

Abstract [English summary modified]: Artificial insemination of hens
permit rapid upgrading of stock with optimal utilization of the expensive
roosters of noble breeds: 0.52 ml. semen can be obtained by abdominal
massage from rooster; suffices for 100 to 150 hens. Complete technical
details. Table; 3 photographs of technique; 3 Soviet, 4 Rumanian include
thesis, 3 Western references.

1/1

R/008/62/013/005/002/008
A065/A126

AUTHOR: Constantinescu, George

TITLE: A new approach to fluid power transmission analysis

PERIODICAL: Studii și cercetări de mecanică aplicată, v. 13, no. 5, 1962, 1,073 - 1,090

TEXT: This paper, dealing with the advantages of hydrosonic power transmission, was originally published in English language under the above title in "Conference on Oil Hydraulic Power Transmission and Control". The conference was held at the Institute of Mechanical Engineers in London on November 29 and 30, 1961. The method of hydrosonic calculation is very similar to the calculation method adopted in the transmission of electric power by AC. The bases of this theory were established by the author's patent no. 9029, in 1913, and were developed in his theory on sonics [G. Constantinescu: 1918, Theory of Sonics (British Admiralty, London)]. The author first presents the analytic factors which control the hydrosonic phenomena and the dimensionless relations necessary for studying the behavior of transmissions. He then discusses the efficiency variations

Card 1/3

A new approach to fluid power transmission

R/008/62/013/005/002/008
A065/A126

and the parameters affecting these variations. Besides some specific applications, the method of hydrosonic analysis becomes more and more important for the understanding of the behavior of hydraulic transmissions in general. This analysis, however, treats only that flow, which might be expressed by a series of harmonics with regularly increasing multiples. Various sonic effects, named "percussion effects" can appear in hydrostatic pumps, due to a sudden discontinuity of the pressure or of the cavity. Finally, the author gives indications on the possibility of studying fluid transmissions by using "abstract models". Conclusions: In spite of all advantages of transmissions operating with high-pressure direct current flow, there are cases for which high-pressure hydrosonic equipment operating with alternating current would be more advantageous. This equipment could feed synchronous or asynchronous motors without using valves or holes, being thus free from harmonics and also being able to feed rectifiers. "Quiet" transmissions using hydrosonic power of "infrasonic" frequency, could be used for heating, boiling, etc., in buildings and ships. In hydrosonic transmission only one conduit is needed for the remote control of motors. This article is not complete, but it might suggest some ideas on the calculation of power transmissions. There are 3 figures.

Card 2/3

A new approach to fluid power transmission

R/008/62/013/005/002/008
A065/A126

ASSOCIATION: Laboratory, Oxen House, Tower, Coniston, Lancs

SUBMITTED: April 6, 1962

Card 3/3

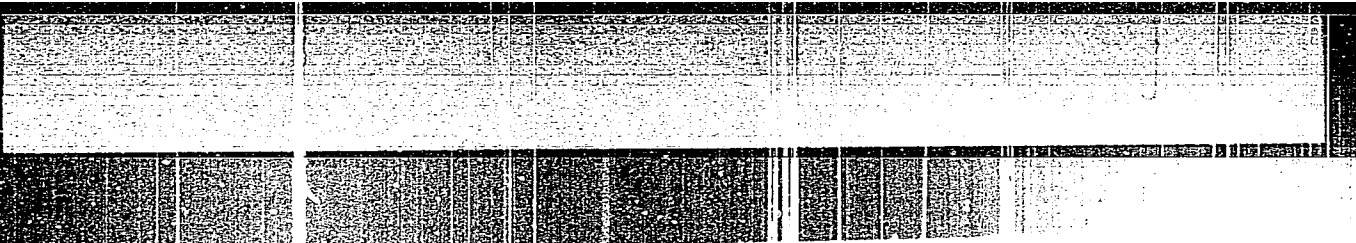
CONSTANTINESCU, Gh., ing.

Discharge of waste waters in the sea. Meteorologia hidrol gosp
6 no.2:147-151 '61.

~~KONSTANTIN I. G. K.~~ [Constantinescu, G.C.] (Bucharest, Romyniya)

Changes in the yield coefficient of grapevine in relation to variety, soil, and climatic conditions. Agrobiologia no.2:192-197
Mr-Apr '62. (MIRA 15:4)

1. Chlen-korrespondent Akademii nauk Rumynskoy Narodnoy Respubliki.
(Grapes--Varieties)



06/15/44 12504, G.C.

copy

Constantinescu, G. G. On linear differential equations integrable by a generalized Laplace transform. Pozitivă
4, 7-23 (1943), 3, 41-56 (1943), 4, 57-72 (1944)
manian)

The author discusses equations integrable by means of the transforms $\int Z(z)e^{x(z)} dz$ and $\int Z(z)e^{x(z)} dz$.

R. P. Boas, Jr. (Providence, R. I.).

Source: Mathematical Reviews,

Vol. 2,

no. 4

SMW

ROMANIA

G. ROSEA TINIESCU, G. M., MD; BUNGETEANU, Gh., MD.

Zoological Garden of the People's Council of the Capital,
Institute of Phytisiology, Bucharest, (Gradina zoologica
a Sfatului Popular al Capitalei, Institutul de fitiziologie,
Bucuresti) - (for all)

Bucharest, Viata Medicala, No 1, 1 Jan 64, pp 65-66

"An Experiment Concerning the Chemical Prophylaxis of Tuberculosis
in Lynxes (Felis Lynx) Living in Captivity."

EXCERPTA MEDICA Sec 8 Vol 15/5 Neurology May 60

2697. NEUROLOGICAL AND PSYCHIC ACCIDENTS DURING CYCLOSERINE THERAPY - Accidente neurologice și psihice în cursul tratamentului cu cicloserină - Constantinescu G. N., Cristea M. and Vrabie E. Clin. de Psihiat. și Fiziol., I. M. P., București - NEUROLOGIA (București) 1959, 4/4 (293-298)

In the course of the treatment of advanced pulmonary tb with cycloserine (4-amino-3-isoxazolidone) in doses of from 250 to 1000 mg. daily there were neurological and psychiatric complications such as disorders of the 8th cranial nerve, myoclonia, epileptic seizures, and psychotic episodes with paranoid and catatonic features. Apart from the known neurotoxic action of cycloserine the authors consider the possibility of tuberculotoxicosis and of allergy in the mechanism of production of the syndromes. The psychopharmacological action of cycloserine resembles that of mesacrine and LSD. Since cycloserine activates pathological features in some patients' EEG, particularly in epileptics, caution is necessary in these cases as well as in patients with a history of psychoses.

Tyndel - Toronto (VIII, 15*)

CONSTANTINESCU, G.N.; CRISTEA, M.; VRABIE, Elena

Neurological and psychic accidents in the course of cycloserine treatment.
Romanian M Rev. no.2:40-43 Ap-Je '60.

(CYCLOSERINE toxicology) (MENTAL DISORDERS etiology)

(NEUROLOGIC MANIFESTATIONS)

PARHON-STEFANESCU, Constanta, prof.; CSIKY, C., conf.; NEGULICI, Eugenia,
dr.; CONSTANTINESCU, G.N. dr.; STEFAN, Margareta, dr.

General view of the etiology and pathogenesis of schizophrenia.
Neurologia (Bucur) 10 no.2:97-108 Mr-Ap'65.

1. Lucrare efectuata in Clinicile de psihiatrie din Bucuresti si
Tirgu Mures si in Centrul de neurop sihiatrie infantila, Bucuresti.

PROTOPESCU-PACHE, Em., prof. geolog; CONSTANTINESCU, Gh.P., ing.;
MECULESCU, M., Ing.

Economical solution for the drinking water supply of the city of
Hunedoara. Hidrotehnica 8 no.3:81-88 Mr '63.

CONSTANTINESCU, Gh.P., ing.; POPESCU, M., ing.

Contributions to the study of an intake of ground water infiltrated
through a river bank. Hidrotehnica 8 no.1:1-6 Ja '63.

CONSTANTINESCU, Gh. P.

"Subterranean waters. Dynamic and chemical hydrology.
Research, operation, and evaluation of resources" by
H. Schoeller. Reviewed by GH.P. Constantinescu.
Meteorologia hidrol gosp 8 no.3:148 '63.

CONSTANTINESCU, Gh.P., ing.

Drilling without filter. Hidrotehnica 8 no.11:402-408
N '63.

CONSTANTINESCU, I.

Selection of propulsory machines for river vessels. I. (To be contd.) p. 7.

REVISTA TRANSPORTURILOR. (Asociatia Stiintifica a Inginerilor si Tehnicienilor din Romania si Ministerul Transporturilor Rutiere, Navale si Aeriene) Bucuresti, Rumania. Vol. 6, no. 1, Jan. 1959.

Monthly List of East European Accessions (EEAI) IC, Vol. 8, no. 7, July 1959

Uncl.

CONSTANTINESCU, I; NICLEA, A.

Determining the dimensions of metallic props of the stope. P 140

REVISTA MINELOR. (Ministerul Minelor, Ministerul Industrii Petrolului si
Chimiei, Directia Exploatarilor Miniere si Asociatia Stintifica a Inginerilor
si Tehnicienilor din Romania) Bucuresti, Romania. Vol. 10, no. 4, Apr. 1959

Monthly List of East European Accessions (FEAI) LC. Vol. 8, no. 9, Sept. 1959.

Uncl.

MARINESCU, G., ing.; CONSTANTINESCU, I., ing.

Energy dissipation in two similar dams situated in different
geologic conditions. Hidrotehnica 6 no.10:347-349 0 '61.

(Hydraulics) (Barrages)

RUMANIA/Cultivated Plants - Fruits. Berries.

M

Abs Jour : Ref Zhur Biol., No 12, 1958, 53841

Author : Constantinescu, I.

Inst : Communist Academy, Rumanian People's Republic

Title : The Soil Structure of the Vineyards in Relation to Their Age.

Orig Pub : Commu. Acad. RPR, 1956, 6, No 6, 823-830

Abstract : As the result of the experiments at the experimental stations of viticulture of Murfatlar, Odobeshti, Yalya Keleguryaske, and Dregeshani in the vineyards of the M. Belchesku and IKAR 7 Institute of Agronomy, it was established that the grape plant cultivation (3-5 years and 40 years) produces deterioration of the soil structure of the tillable layer. In planting new vineyards on virgin plots, the soil structure remained unaffected.
-- Ye.T. Zhukovskaya

Card 1/1

Research

CONSTANTINESCU, I.

Technical and Economical Aspects on Urban Telephone Networks.
ELECTROTEHNICA (Electrical Engineering), "12:550:Dec 55

CONSTANTINESCU, I., ing.

Construction of plane-parallel measuring spacing blocks in Rumania,
a demand of the engineering industry. Metrologia apl 10 no.4:
147-150 Ap '63.

CONSTANTINESCU, I. G., ing.

Graphic method for determining the traveling speeds of ships
in which the main machine has been replaced. Rev transport
9 no. 6:258-260 Je '62.

CONSTANTINESCU, I. Gh., prof. ing.

The Prof. I. Gh. Constantinescu isograph for graphic interpolation
of the contour lines on topographic plans. Rev geodezie 7 no.3:
71-73 '63.

1. Institutul de petrol, gaze si geologie, Bucuresti.

CONSTANTINESCU, Gh., acad.; CONSTANTINESCU, I. Gh.

Noxious influence of sulfurous (SO and SO₂) gases on grapevines
by the cumulative effect of the carbon black. Comunicarile AR 13
no.7:645-649 JI '63.

1, Institutul agronomic "Nicolae Balcescu" si Institutul politehnic,
Bucuresti.

CONSTANTINESCU, Gh., acad.; CONSTANTINESCU, I. Gh.

On the gluco-acidimetric relation in must of grapes and its variation depending on quality and the ecologic and geographical conditions. Comunicarile AR 13 no.10:901-908 0 '63.

MARIAN, Ion, conf. ing. candidat in stiinta tehnice; CONSTANTINESCU,
Ilie, conf. ing.

Method for determining the speed and acceleration trajectory
of the arms of the execution parts of the loading machines
with lateral fixing of materials. Metalurgia constr mas 13
no. 4: 299-306 Ap '61.

1. Institutul de Mine, Petrosani.

CONSTANTINESCU, Ion G., ing.

First stages in determining the main characteristics of passenger
river boats. Rev transport 9 no.12:536-542 D '62.

CONSTANTINESCU, Ion G., ing.

Ore maritime transportation. Rey transport 10 no. 7:297-303
Jl '63.

CONSTANTINESCU, Ionel, ing.

Characteristic elements of modern marine ships; tank steamer.
Rev transport 12 no.2:81-91 F '65.

L 32126-66 EWP(v)/EWP(k)/EWP(h)/EWP(l)

ACC NR: AP6023490

SOURCE CODE: RU/0018/65/000/002/0073/0087

AUTHOR: Constantinescu, I. N.; Darabont, A.

ORG: none

TITLE: Energetic calculation of drilling machines with piston valve gear

SOURCE: Constructia de masini, no. 2, 1965, 73-87

TOPIC TAGS: drilling machine, engine piston, valve

ABSTRACT: A summary of the principal formulae used in the calculations relating to piston-valve drilling machines, with a brief theoretical justification and derivation for each. Some technical data are also given for a number of drilling machines used in Rumania. Orig. art. has: 10 figures and 10 tables. JPRS

SUB CODE: 13 / SUBM DATE: none / SOV REF: 001 / OTH REF: 003

Cord 1/1 *BLG*

0915

1450

RUMANIA/Pharmacology - Toxicology, Tranquilizers.

V

Abs Jour : Ref Zhur Biol., No 4, 1959, 18524

Author : Constantinescu, K., Gavas, R., Dimutriu, M., Con. Zh.

Inst :

Title : The Treatment of Chorea Minor by Means of Serpasil

Orig Pub : "Pediatria", 1957, No 1, Ref-Rumynsk, med. obozreniye, 1957,
1, No 4, 43

Abstract : Children with chorea minor were treated with serpasil (I) with 24- hour dosing of 0.5 mg 3or the duration of 12-20 days in combination with antirheumatic preparations. Clinical improvement (general sedative action, decrease and termination of hyperkinesis) began during the first days of treatment. In a number of patients, side effects were noted in the form of bradycardia, hypotonia, orthostatic colapse, sleepiness and headache. In weakly-expressed affections of the heart, bradycardia, which develops under influence of I, assists better restoration of myocardial function.

Card 1/1

- 12 -

CONSTANTINESCU, Ion, prof. ing.

Calculation of the cost price in postal and telecommunication services.
Telecomunicatii 7 no.1:1-4 Ja-F '63.

CONSTANTINESCU, I.G., ing.

Technical and economic aspects of modernizing the sea and river vessels
by replacing the propulsion system. Rev transport 9 no.10:425-434
0 '62.

CONSTANTINESCU, K

66289

~~24(3)~~ 24,7700

SOV/181-1-11-24/27

AUTHORS: Kalashnikov, S. G., Konstantinesku, K.

TITLE: On a Possible Method of Determining the Capture Cross Section Ratio of the Recombination Centers in Semiconductors

PERIODICAL: Fizika tverdogo tela, 1959, Vol 1, Nr 11, pp 1763-1766 (USSR)

ABSTRACT: In the present paper the authors describe a method of determining the capture cross section ratio of recombination centers (traps) in semiconductors. The method is based on the measurement of the temperature T and the equilibrium concentration of electrons and holes (n_0, p_0) at which the lifetime τ of the surplus (nonequilibrium) electrons and holes is independent of their respective concentrations (injection levels). It must further be assumed that the trap concentration is sufficiently low ($\delta p \approx \delta n$), the measurement can be carried out under steady conditions, and the capture cross section concentration is independent. If this is the case, the capture cross section can be described in terms of $T, n_0,$ and p_0 . If (a) the trap is able to capture one electron only, τ is independent of the injection level $x = p/(n_0 + p_0)$ if $n_1 - p_0 = \gamma(n_0 - p_1), \gamma = C_p/C_n \cdot C_p/C_n =$

Card 1/3

66289

SOV/181-1-11-24/27

On a Possible Method of Determining the Capture Cross Section Ratio of the Recombination Centers in Semiconductors

$= N\alpha_{n,p} = N \langle vS_{n,p} \rangle$, where N denotes the concentration of traps, $\alpha_{n,p}$ the capture coefficient for electrons and holes respectively, v the thermal velocity, $S_{n,p}$ the capture cross sections. n_1 and p_1 are the concentrations of the electrons and holes in the zone, if the Fermi level coincides with the energy level of the electrons in the trap. Herefrom the following conditions are derived: $p_0' = n_1$, $p_0'' = \gamma p_1$. If (b) the trap is able to capture several electrons, the complicated equations (3) - (6) are derived for the condition that τ is independent of x . Changes in τ can be determined by measuring the current of a short circuit photoelement, the terminal layer of which consists of the material investigated. Experimental conditions are described in brief. A diagram for p- and n-germanium is given in figure 1 showing the dependence of the short circuit current on the light intensity for various temperatures. Since the temperature affects the character of the dependence of τ on x , one can establish the condition under which τ is independent of

Card 2/3

66289

SOV/181-1-11-24/27

On a Possible Method of Determining the Capture Cross Section Ratio of the Recombination Centers in Semiconductors

x. (linear characteristic) by investigating the shape of the lux—ampere characteristic at different temperatures. In addition to a direct measurement of the short circuit current, it is also possible to work with a compensating circuit. A schematic diagram of the latter is given in figure 2, and the determinations possible by means of this circuit are discussed briefly. Finally, the authors thank V. S. Vavilov for discussions and assistance given. There are 2 figures and 6 references, 3 of which are Soviet.

ASSOCIATION: Fizicheskiy fakul'tet Moskovskogo gosudarstvennogo universiteta
(Department of Physics of the Moscow State University)

SUBMITTED: July 6, 1959

Card 3/3

CONSTANTINESCU, K.

~~24 (6)~~ 24.7700

AUTHOR: Konstantinesku, K.

66290
SOV/181-1-11-25/27

TITLE: Determination of the Ratios of Electron- and Hole-capture Cross-sections of Copper Atoms in Germanium

PERIODICAL: Fizika tverdogo tela, 1959, Vol 1, Nr 11, pp 1766-1768 (USSR)

ABSTRACT: The short-circuit currents of two different photoelectric elements were measured with a compensation circuit and the ratios of different capture cross sections were calculated therefrom. For n-germanium inactive electrodes were prepared by melting-in of tin or indium (for n-p-germanium). In the p-germanium active electrodes were prepared by melting-in of a Pb+As-alloy, while an alloy of Pb+In was used for the inactive electrodes. Before melting the electrodes, copper was added into the germanium platelets by diffusion at 550°C. The thickness of the platelets was several lengths of diffusion (diffusion-length range 0.19 to 0.26 mm). The saturation current intensity i_s of the photoelectric elements of the n-type was smaller than $10 \mu a$, for the p-type $< 50 \mu a$. A short circuit ratio $\alpha r_i \ll 1$ (Ref 1) was found in all samples.

Card 1/3

The reference photoelectric element was a 0.3 mm thick germanium

H

66290

Determination of the Ratios of Electron- and Hole-capture Cross-sections of Copper Atoms in Germanium

SOV/181-1-11-25/27

platelet which was cut out from a crystal with a large diffusion length (≈ 1.5 mm). The linearity of this element was separately examined and it was found to be very good. In the comparison measurement special attention was paid not to co-measure any parasitic EMF. Tables 1 and 2 contain the following measuring and calculation results:

$P_0, P_1, C_{p1}/C_{n1}, n_0, n_1^2, n_1, n_2$ and $\frac{C_{p2}}{C_{n2}}$. As the results

derived depend very much on the assumed energy-level values, it is only worthwhile to give the order of magnitude for

$\frac{C_{p1}}{C_{n1}}$ and $\frac{C_{p2}}{C_{n2}}$, i.e. ≈ 10 and ≈ 100 . It is understandable that

$\frac{C_{p2}}{C_{n2}}$ is larger, because the copper levels have the character

acceptors. S. G. Kalashnikov suggested the subject under review and helped with advice. There are 1 figure, 2 tables,

Card 2/3

66290

Determination of the Ratios of Electron- and Hole-
capture Cross-sections of Copper Atoms in Germanium

SOV/101-1-11-25/27

and 4 references, 2 of which are Soviet.

ASSOCIATION: Fizicheskiy fakul'tet Moskovskogo gosudarstvennogo universiteta
(Physics Department of the Moscow State University)

SUBMITTED: July 6, 1959



Card 3/3

TOMA, I., dr.; CONSTANTINESCU, L., dr.; FRIDMAN, I., dr.; POTOLINCA, V.,
dr. HARASIM, D., dr.

Acute poisoning with an insecto-fungicide in children (con-
sidered in relation to 6 clinical cases). *Pediatria (Bucur.)*
13 no.6:545-549 N-D '64

1. Lucrare efectuata in Sectia de pediatrie a Spitalului raional
Falticeni (medic sef de sectie: dr. L. Constantinescu).

CONSTANTINESCU, L.

Analysis of the performance of naval diesel engines based on indicator diagrams. p. 290.
(REVISTA TRANSPORTURILOR. ROMANIA. Vol. 3, no. 8, Aug. 1956.)

SO: Monthly List of East European Accessions (EEAL) LC, Vol. 6, no. 7, July 1957. Uncl.

CONSTANTINESCU, L., ing.; FACAOARU, I., ing.

Application experiment of a conditioned standard for testing concrete by ultrasonics. Rev constr si mat constr 15 no.8:394-403 Ag'63.

1. Laboratorul Central DGCMUCR (for Constantinescu). 2. Institutul de cercetari in constructii si economia constructiilor, Bucuresti (for Facaoaru).

FACAOARU, I., ing.; CONSTANTINESCU, L., ing.

Results obtained by impulse methods in applying the norms of non-destructive testing of concrete. Pt. 2. Rev constr si mat constr 15 no.10:519-528 0.'63.

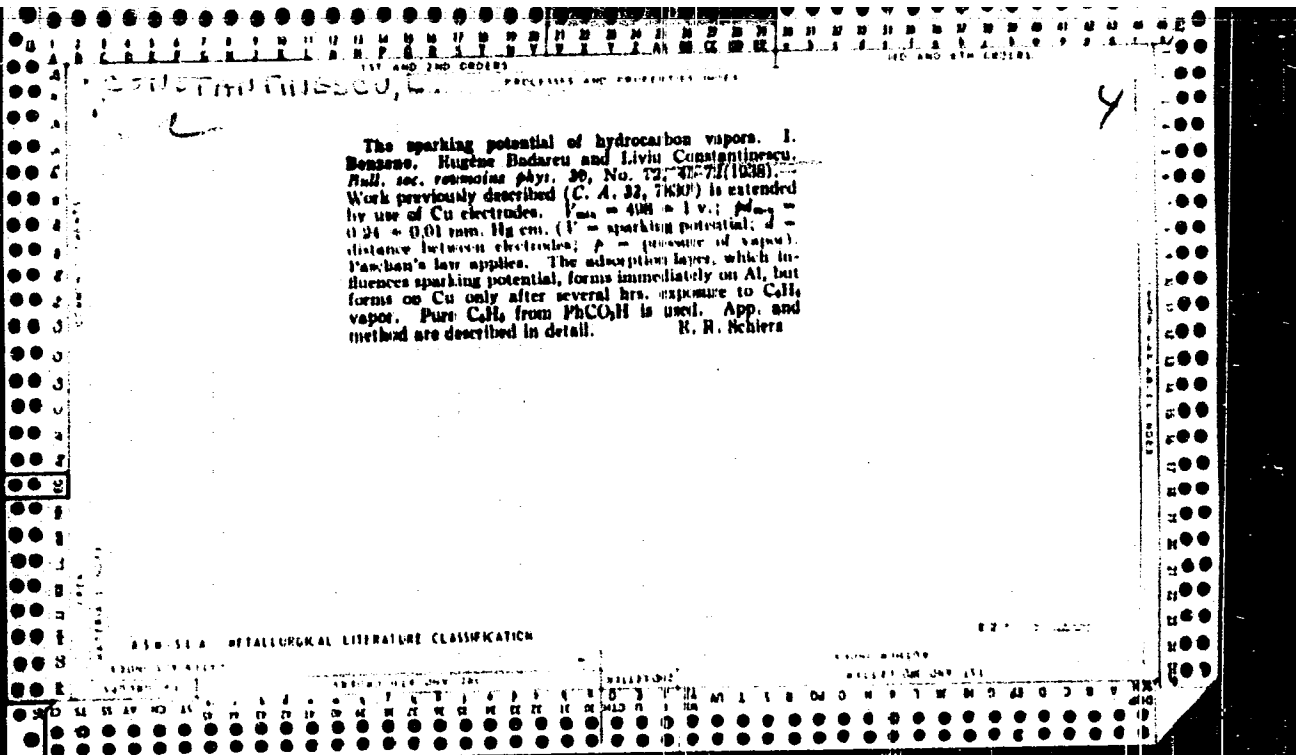
1. Institutul de cercetari in constructii si economia constructiilor (for Facaoaru). 2. DGCNUCR (for Constantinescu).

KLANG, M.; DUINEA, N.D.; CONSTANTINESCU, I.

Contributions to the oxidation of liquid paraffins. Pt.1.
Rev chimie Min petr 14 no.10:574-580 0'63.

CONSTANTINESCU, Liviu; BOTEZATU, Radu; STEFANESCU, Ruxandra

Applicability of gravimetric prospecting in detecting the oil bearing anticlines in the Pericarpathian region. Pt. 2. Bul Inst Petrol Rum no. 10:9-22 '63.



81

53
N

537.525.4 : 537.521.6

588. Study of the sparking potential in hydrocarbon vapours. III. Xylene. CHIMANIPASCU, I. *Bull. Soc. Roumaine Phys.*, 41 (NOV 76): 73-7 (1940) *In French.*—The dependence of sparking potential V (volts) upon pressure p (mm. Hg) and interelectrode distance d (cm) has been investigated for the three isomers of xylene. Al and Cu cathodes were used. The range of values of p and d was 0.5–2.5 mm Hg and 0.1–1.5 cm. For $pd > 0.5$, V increases linearly with pd ; in this region the three isomers behave similarly. For $pd < 0.5$ the sparking potential for p -xylene is higher than that for the other isomers; the minimum for p -xylene is 20–25 V higher than that for o - and m -xylenes. For Cu cathodes the sparking potential is 10–15 volts higher than with Al cathodes at the same value of pd .

A. M.H.

INTERNATIONAL METALLURGICAL LITERATURE CLASSIFICATION