

BRATKO, I.

Yugoslavia (430)

General - Serials

O. Zupancic and our times. p. 32. NOVI SVET
(Drzavna zalozba Slovenije) Ljubljana.
(Monthly for literature and arts). Vol. 3,
1948.

East European Accessions List. Library of
Congress, Vol. 1, no. 13, November 1952.
UNCLASSIFIED.

BRATKO, Ivan

S poti po evropskem zapadu. V Ljubljani, Slovenski knjižni zavod, 1950. 98 p.
(From travel through Western Europe. illus.)

SO: Monthly List of East European Accessions, (EMAL), LC, Vol. 4, no. 10, Oct. 1955,
Uncl.

Bratko Jerzy

POLAND/Chemical Technology - Chemical Products and Their
Application - Leather. Fur. Gelatin. Tanning Agents.
Technical Proteins.

I-29

Abs Jour : Referat Zhur - Khimiya, No 9, 1957, 33117

Author : Bratko Jerzy

Inst :

Title : USSR Experience in the Tanning of Sheepskins with
Sulfochlorides.

Orig Pub : Przegl. skorzany, 1956, 11, No 5, 121-126

Abstract : Data are presented on the effect upon the binding of
sulfochloride, by dehaired hides, induced by pretreat-
ment operations, addition of CH_2O to sulfochloride, addi-
tional after-tanning with CH_2O , aluminum alum and chro-
mium salts; data are also included concerning studies
of variation of the temperature of treatment depending
on the amount of sulfochloride. The advantages of tan-
ning with sulfochlorides, as compared with other tanning
agents, are set out.

Card 1/1

SHUGAYLIN, Aleksandr Vasil'yevich; DISHLEVIY, P.S., kand. filos. nauk, vidp.
red.; BRATKO, Z.F., red.; MATVIICHUK, O.O., tekhn. red.

[Soviet physical science is in the forefront of the fight for a
materialistic orientation of present-day physics] Radians'ka
fizychna nauka - peredovyi front borot'by za materialistychnyi
napriam v suchasni fizytsi. Kyiv, Vyd-vo Akad. nauk URSR, 1958.
77 p. (MIRA 11:?)

(Physics--Philosophy)

VIL'NITSKIY, Moisey Borisovich [Vil'nyts'kiy, M.B.]; DYSHLEVYY,
P.S., kand.filosof.nauk, otv.red.; BRATKO, Z.T., red.;
MIL'OKHIN, I.D., tekhn.red.

[Some philosophical problems in the special theory of
relativity] Deiakі filosofs'ki pytannia spetsial'noi teorii
vidnosnosti. Kyiv, Vyd-vo Akad.nauk URSS, 1959. 194 p.

(Relativity (Physics))

(MIRA 12:12)

RAZNATOVSKIY, Ivan Mitrofanovich [Raznatovs'kyi, I.M.]; TARANOV, A.P.,
kand.yuridich.nauk, otv.red.; BRATKO, Z.T., red.; LISOVETS',
O.M., tekhn.red.

[Organization of the national economy and its management in the
Soviet Ukrainian State, 1945-1959] Hospodars'ko-organizators'ka
diial'nist' Ukrain's'koi Radians'koi derzhavy. 1945-1959 rr.
Kyiv. Vyd-vo Akad.nauk URSR, 1959. 259 p.

(Ukraine--Industrial organisation)
(Ukraine--Agricultural administration)

(MIRA 13:7)

SOV/86-58-8-17/37

AUTHOR: P.P. Zarudniy, Col, and A.A. Bratkov, Engr Maj, Candidate of Technical Sciences

TITLE: Rocket Engines (Raketnyye dvigateli)
3. The Propellants of Rocket Engines (Topliva raketnykh dvigateley)

PERIODICAL: Vestnik vozdushnogo flota, Nr 8, 1958, pp 43-48 (USSR)

ABSTRACT: The authors class rocket propellants into solid and liquid propellants. The rocket engines are also classed accordingly, i.e., solid fuel and liquid fuel rocket engines. They point out the advantages of the solid fuel rocket engine and the disadvantages of the solid propellants. They also point out the requirements put on liquid propellants. The article contains the names of scientists who worked on liquid propellants: K.E. Tsiolkovskiy, F.A. Tsander, Yu.V. Kondratyuk, N.G. Chernyshev, V.P. Glushko, G.E. Langemak.

Card 1/2

SEMENIDO, Ye.G., prof., doktor tekhn. nauk; ENGLIN, B.A.; PAPOK, K.K.,
prof. doktor tekhn. nauk; ZARUBIN, A.P.; RAGOZIN, N.A.;
SHIMONAYEV, P.S.; CHERTKOV, Ya.B.; LIVSHITS, S.M.;
BESSMERTNYI, K.I.; LOSIKOV, B.V.; SABLINA, Z.A.; ROZHKOV, I.V.;
GUREYEV, A.A.; FAT'YANOV, A.D.; ZRELOV, V.N.; ZARUDNYI, P.P.;
BRATKOV, A.A.; BARON, I.G.; LEVINA, Ye.S., ved. red.; TITSKAYA,
B.F., ved. red.; FEDOTOVA, I.G., tekhn. red.

[Motor, jet, and rocket fuels] Motornye, reaktivnye i raketnye
topliva. 4., perer. i dop. izd. Moskva, Gos. nauchno-tekhn.
izd-vo neftianoi i gorno-toplivnoi lit-ry, 1962. 741 p.

(MIRA 15:2)

(Rockets (Aeronautics))—Fuel

(Jet propulsion)

(Motor fuels)

BRATKOV, P.

TECHNOLOGY

Periodicals: MINNO DELO. Vol 13, No. 5 Sept./ Oct. 1958.

BRATKOV, P. Speedy construction of a vertical shaft with minimum use of machinery in the Rosen-Vurli briag State Mine Enterprise. p. 57.

Monthly List of East European Accession (EEAI) LC Vol. 8, No. 4, April 1959,
Unclass.

1. BRATKOV, Y.N.

2. USSR (600)

4. Tuberculosis

7. Course of latent forms of chronic military tuberculosis of the lungs in Gurzuf in different seasons, Probl.tub. no.6, 1952.

9. Monthly List of Russian Accessions, Library of Congress April _____ 1953, Uncl.

BRATKOV, V. N., NESTEROVA, S. P.

Experience With the Application of Air Baths During the Cold Period of the Year.

VOYENNO-MEDITSINSKIY ZHURNAL (MILITARY MEDICAL JOURNAL), No 12. 1954. P.66

BRATKOV, V. N.

Dispensary registration of patients with tuberculosis. Probl.
tub. no.3:14-15 '62. (MIRA 15:4)

1. Zaveduyushchiy tuberkuleznym kabinetom Gurzufskoy kurortno-
poselkovoy polikliniki.

(TUBERCULOSIS) (HOSPITAL---OUTPATIENT SERVICES)

BRATKOV, Yu.; MORGUNOVA, G.; SINITSYN, V.

OS-4, 5 grain-cleaning machine. Tekh.v sel'khoz. 21 no.8:50-55
Ag '61.

(Grain-Cleaning)

(MIRA 14:7)

DIMITROV, D.; FRATEV, F.; STEPANOVA, A.; BRATKOVA, M.

Some color reactions of aromatic compounds. Pt.4. Godishnik
khim tekhn 9 no.2:209-219 '62 [publ. '63].

USSR/Metallurgy - Welding, Equipment, Oct 52
Design

"Calculating the Magnetic Circuit of an Induc-
tion Spot Welding Machine for Required Energy,"
Docent O. N. Bratkova, Cand Tech Sci, MVTU
(Moscow Order of Labor Red Banner Higher Tech
School imeni Bauman)

Vol. 23
"Avtogen Delo" No 10, pp 10-12

Deals with one of basic problems in design of
impulse welding machine, accumulating energy
in magnetic field, namely, calculn of magnetic

231751

circuit of welding transformer. Presents de-
sign chart, which permits one to find values
of reduced field intensity, air gap, and mag-
netic induction for EI steel, when energy
density is given.

231751

231751

Docent O. N. Bratkova

BRATKOVA, O. H.

BRATKOVA, O. H.: "Contact machines accumulating energy in a magnetic field for the point welding of light alloys." Min Higher Education USSR. Moscow Order of Lenin and Order of Labor Red Banner Higher Technical School imeni Bauman. Moscow, 1956. (Dissertation for the Degree of Doctor in Technical Sciences).

Source: Knizhnaya letopis' No. 28 1956 Moscow

BRATKOVA, O.N., kandidat tekhnicheskikh nauk, dotsent.

The working process of a contact machine accumulating magnetic field energy. *Elektrichestvo* no.2:43-49 F '57. (MLRA 10:3)

1. Moskovskoye vyssheye tekhnicheskoye uchilishche im. Baumana.
(Electric welding)

BRATKOVA, O.N.

AUTHORS:

Bratkova, O.N., Candidate of Technical Sciences; Nitusov, Yu. Ye., Engineer, and Bachelis, I.A., Engineer

135-10-2/19

TITLE:

A New Contact Machine with Stored Energy (Novaya kontaktnaya machina s nakopleniyem energii)

PERIODICAL:

Svarochnoye Proizvodstvo, 1957, No 10, pp 7-9 (USSR)

ABSTRACT:

The new contact welding machine is a welding transformer designed collectively, by the three inventors (authors' certificate No.106207) at the Chair "Electrical Engineering and Electrical Equipment" of MVTU imeni Bauman. The essence of the design consists of a movable central core rigidly connected with resilient elements (these were springs in the experimental unit shown by Figure 1) which contract under the pressure exerted by the core when current passes through the transformer windings. In this way, energy is stored in the magnetic field and in the springs. When the primary circuit is interrupted, the magnetic field weakens and the springs repel the core, whereby a portion of the energy stored in the springs is transferred into the welding circuit. The article includes a mathematical analysis of the system. The work by A.I. Moskvitin (1) was utilized by the authors in their investigation of

Card 1/2

A New Contact Machine with Stored Energy

135-10-2/19

the processes connected with the movements of the core. The conclusions are made that the system stores and gives into the welding circuit 1.5 to 2 as much energy as a transformer with a stable core (at equal mass of material used for building the transformers). It enables control of the welding current impulse shape and the speed of energy increase which is converted into welding heat between the electrodes. It decreases considerably the arc formation on the contacts being led apart, and results in better uniformity of quality of the welding spots, which eliminates a serious drawback of existing machines which store energy in the magnetic field alone. There are 5 diagrams and 4 references, all of which are Russian.

ASSOCIATION: MVTU imeni Bauman.

AVAILABLE: Library of Congress

Card 2/2

BRATKOVA, Ol'ga Nikolayevna -- awarded sci degree of Doc Tech Sci for the 23 Dec 57 defense of dissertation: "Contact machines with accumulation of energy at the magnetic pole for precision welding of light alloys" at the Council, Mos Higher Tech School imeni Bauman; Prot No 15, 7 Jun 58.

(BMVO, 11-58,27)

RABINOVICH, Isaak Yakovlevich; BRATKOVA, O.N., kand. tekhn. nauk, retsenzent;
SHCHITOVA, V.M., kand. tekhn. nauk, red.; STEPANCHENKO, N.S., red.
idz-va; MODEL', B.I., tekhn. red.

[Equipment for electric arc welding; current sources] Oborudovanie
dlia dugovoi elektricheskoi svarki; istochniki pitania dugi.
Moskva, Gos. nauchno-tekhn. izd-vo mashinostroit. lit-ry, 1958.
380 p.

(MIRA 11:10)

(Electric welding--Equipment and supplies)

PHASE I BOOK EXPLOITATION .

SOV/4810

Nikolayev, G. A., A. I. Akulov, O. N. Bratkova, G. B. Yevseyev,
N. L. Kaganov, A. V. Mordvintseva, and S. T. Nazarov

Svarka (Welding) Moscow, Mashgiz, 1960. 106 p. (Series: Sovetskoye
mashinostroyeniye v. 1959-1965 gg.) 4,000 copies printed.

Ed. of Series: I. I. Changli; Managing Ed. for Literature on Heavy
Machine Building: S. Ya. Golovin, Engineer; Ed. of Publishing
House: G. N. Soboleva; Tech. Ed.: G. V. Smirnova.

PURPOSE: This booklet is intended for technical personnel in plants,
Councils of the National Economy, and project bureaus, and may
also be useful to students who intend to work in these fields.

COVERAGE: The authors discuss the development of welding methods in
machine building and civil engineering. The following are con-
sidered: automatic arc welding, electroslag welding, automatic
resistance welding, gas-flame processing, automatic surfacing
of metals, inspection of welded joints, and modern methods of
joining metallic and nonmetallic materials. No personalities
are mentioned. There are no references.

Card 1/2

BRATKOVA, O.N.

VLADIMIRSKIY, T.A., doktor tekhn.nauk; VROBLEVSKIY, R.V., inzh.;
GLEBOV, L.V., inzh.; GODIN, V.M., kand.tekhn.nauk; GUZOV,
S.G., inzh.; GULYAYEV, A.I., inzh.; YERSHOV, L.K., inzh.;
KOCHANOVSKIY, N.Ya., kand.tekhn.nauk; LYUBAVSKIY, K.V., prof.,
doktor tekhn.nauk; PATON, B.Ye., akademik, prof., doktor tekhn.
nauk; RABINOVICH, I.Ya., kand.tekhn.nauk; RADASHKOVICH, I.M.,
inzh.; RYKALIN, N.N., prof., doktor tekhn.nauk; SPEKTOR, O.Sh.,
inzh.; KHRENOV, K.K., akademik, prof., doktor tekhn.nauk;
CHERNYAK, V.S., inzh.; CHULOSHNIKOV, P.L., inzh.; SHORSHOROV,
M.Kh., kand.tekhn.nauk; BRATKOVA, O.N., prof., doktor tekhn.nauk,
nauchnyy red.; HRINBERG, I.L., kand.tekhn.nauk, nachnyy red.;
GEL'MAN, A.S., prof., doktor tekhn.nauk, nachnyy red.; KONDRATOVICH,
V.M., inzh.; nachnyy red.; KRASOVSKIY, A.I., kand.tekhn.nauk,
nachnyy red.; SKAKUN, G.F., kand.tekhn.nauk; nachnyy red.;
SOKOLOV, Ye.V., inzh., red.; IVANOVA, K.N., inzh., red.izd-va;
SOKOLOVA, T.F., tekhn.red.

[Welding handbook] Spravochnik po svarke. Moskva, Gos.nauchno-
tekhn.izd-vo mashinostroit.lit-ry. Vol.1. 1960. 556 p.

(MIRA 14:1)

1. AN USSR (for Paton, Khrenov). 2. ~~Chleny-korrespondenty AN SSSR~~
(for Rykalin, Khrenov).

(Welding--Handbooks, manuals, etc.)

BRATKOVA, O.N.

[Feed sources for electric slag welding] Istochniki pitania
dlia elektroshlakovoi svarki. Moskva, MVTU, 1962. 34 p.
(MIRA 16:7)

(Electric welding)

L 32596-56 EWT(m)/EWP(v)/T/EWP(t)/EWP(k)/EWP(h)/EWP(b)/EWP(l)/EWA(c) JD/HM
ACC NR: AP5018695

SOURCE CODE: UR/0125/65/000/007/0011/0014 17

AUTHOR: Bratkova, O. N. (Doctor of technical sciences); Lomov, I. A. 13
(Engineer)

ORG: MVTU imeni Baumana

TITLE: Power circuit calculation for a low amperage arc power source

SOURCE: Avtomaticheskaya svarka, no. 7, 1965, 11-14

TOPIC TAGS: transistorized circuit, electric power source, arc welding

ABSTRACT: The basic parameters of a low amperage power circuit for argon arc welding with nonconsumable electrodes are calculated and the use of transistors as welding voltage regulators is discussed. Transistors may be connected (1) to the bridge rectifier or (2) to the rectifier circuit. Despite a slight power loss due to feedback resistance in the emitter circuits, the bridge rectifier hookup is favored over the rectifier circuit hookup. Transistorized voltage regulators in low amperage arc welding have the advantage of holding voltage constant despite fluctuations in the length of the arc (at 0.3-1.5 mm arc length, voltage fluctuation did not exceed 3-4%) and make for a much lighter, more compact power source. Orig. art. has: 4 figures, 7 formulas.

SUB CODE: 13/ SUBM DATE: 06Aug64/ ORIG REF: 004/ OTH REF: 000

Card 1/1 BK

UDC: 621.791.03 : 621.382.3

BRATKOVA, R. S.

USSR / Human and Animal Physiology. Nervous System. T
General Problems.

Abs Jour: Ref Zhur-Biol., No 22, 1958, 102161.

Author : Karayev, A. I.; Bratkova, R. S.
Inst : Not given.
Title : The Influence of Stimulation of Baroreceptors of
the Gallbladder on the Sugar Content in the Blood.

Orig Pub: Fiziol. zh. SSSR, 1957, 43, No 3, 235-239.

Abstract: The fluctuations of sugar content in blood (SCB) in stimulation of gallbladder baroreceptors were studied on 19 cats under conditions of acute experiment and on two dogs with bladder fistula. The significance of initial SCB was noted; SCB increased or decreased depending on it. 5-minute-long stimulation of baroreceptors induced a faster and longer lasting effect than did 1-minute-long

Card 1/2

BRATKOVIC, F.

"Ferrites" by R.A.Waldron. Reviewed by F.Bratkovic. Elektr vest
29 no.8/10:239 '61.

BRATKOVIC, Franc, inz.

Geodesic activity in Slovenia. Geod list 17 no. 4/6:
138-139 Ap-Je '63.

BRATKOVIC, France, inz.

Fifty years of technical training in civil engineering. Nova
proizv 14 no.3/4:227-230 S '63.

BRATKOVSKIY, E. I. (Main Veterinary Surgeon, Tlumachevsk Raion), SHNITSER, V. I.
(Main Veterinary Surgeon, Galich Raion), SHCHAVINSKIY, O. I.
(Veterinary Surgeon, Stanislavsk Oblast'), KOVALEV, A. A.
(Candidate of Veterinary Sciences, Ukrainian Scientific-Research
Institute of Experiment Veterinary Medicine), and NECHVAL', I. T.
(Director of Poltava Oblast' Veterinary Bacteriological Laboratory).

....."Application of "aminoacriquin" for treatment of bulls infested with
Trichomonas".

Veterinariya, Vol. 38, No. 2, 1961, p. 32.

BRATKOVSKIY, G

BRUSOVANSKIY, S., inzh.-polkovnik; BRATKOVSKIY, G., inzh.-podpolkovnik.

Rearrange the technical control system. Tankist no.1:32-39 Ja '58.
(Tanks (Military science)--Maintenance and repair) (MIRA 11:3)

22(3)

SOV/175-58-6-32/41

AUTHOR: Bratkovskiy, G., Engineer Lieutenant-Colonel

TITLE: Easily and Quickly

PERIODICAL: Tankist, 1958, Nr 6, p 50 (USSR)

ABSTRACT: The author states that much time and effort are necessary to couple the rope of a truck-tractor haulage winch with a tank in water. The length of the haulage winch rope is 200 m and the diameter - 28.5 mm. Dragging such a rope is not an easy task. An additional light rope of 4 mm diameter and a corresponding length together with a snatch block may be very helpful. A drawing (Figure 1) shows three stages of a coupling operation. One to two men can easily perform the task. There is 1 diagram.

Card 1/1

111 AND 120 ORDERS

PROCESSES AND PROPERTIES INDEX

117L

A 10% solution of sulfidine for parenteral application.
R. Kh. Bratkovskii. *Sovetsk. Med. Zhur.* 1940, No. 4, 5,
20-2. The author is, unless in parenteral use and does
not cause complications. Given intramuscularly, it is
rapidly absorbed. Sulfidine appears in the urine 20-30
min. after injection. It is resistant to sterilization.

ASB-SLA METALLURGICAL LITERATURE CLASSIFICATION

111 AND 120 ORDERS

BRATKOVSKIY, V.A.

Initial data for determining heights on a stereotopometer.
Geod. i kart. no.11:25-33 N '62. (MIRA 15:12)
(Aerial photogrammetry)

BRATKOVSKIY, V.A.

Conditions for correct operation of precision stereometers as
stereocomparators, their adjustment and verification. Grad.
i kart. no.10:25-35 O '61. (MIRA 14:11)
(Aerial photogrammetry)

BRATKOVSKIY, V.A.

Preparing materials for the plotting of maps. Geod. i kart. no.11:
40-41 N '61. (MIRA 15:1)

(Cartography)

BRATKOVSKIY, V.A.

Projector for junctions. Geod. i kart. no.5:48-51 My '62.

(MIRA 15:7)

(Cartography)

BRATKOVSKIY, V.A.

Using a large blueprint frame. Geod.1 kart. no.6:63-64 Je '62.
(MIRA 15:8)

(Photomechanical processes)

BRATKOVSKIY, V.V.

Extensive resection of the small intestine. Zdrav. Bel. 9 no.7:
84 JI'63 (MIRA 17&4)

1. Iz Lyubchanskoy gorposelkovoy bol'nitsy Grodnenskoj oblasti
(glavnyy vrach V.V. Bratkovskiy).

KOVALEV, A.A., kand. veterin. nauk; NECHVAL', I.T.; BRATKOVSKIY, Ye.I.;
SHNITSER, V.I.; SHCHAVINSKIY, O.I., veterin. vrach (Stanislavskaya
obl.)

Treating trichomoniasis in bulls using aminoacrichine. Veterinariia
38 no.2:32-35 F '61. (MIRA 18:1)

1. Ukrainskiy nauchno-issledovatel'skiy institut eksperimental'noy
veterinarii (for Kovalev). 2. Direktor Poltavskoy oblastnoy veteri-
narno-bakteriologicheskoy laboratorii (for Nechval'). 3. Glavnyy
veterinarnyy vrach Tlumachevskogo rayona, Stanislavskaya oblast'
(for Bratkovskiy). 4. Glavnyy veterinarnyy vrach Galichskogo
rayona Stanislavskoy oblasti (for Shnitser).

BRATKOVSKIY, Yu.G.

Specific and general problems in the qualitative theory of differential systems. Uch.zap.RGPI 15:88-108 '58. (MIRA 12:7)
(Differential equations)

S/044/62/000/006/011/127
B112/B104

AUTHOR: Bratkovskiy, Yu. G.

TITLE: Some questions relating to the behavior of the trajectories of algebraic differential systems without linear terms as a function of a parameter change

PERIODICAL: Referativnyy zhurnal. Matematika, no. 6, 1962, 49-50, abstract 6B215 (Uch. zap. Ryazansk. gos. ped. in-t, v. 24, 1960, 11 - 22)

TEXT: The present paper is a continuation of a previous paper of the author (RZhMat, 1959, 4669). As in the previous article, the behavior of the characteristics of the system

$$\begin{aligned} dx/dt &= \sum_{i+j=k}^n a_{ij} x^i y^j = P(x, y) \\ dy/dt &= \sum_{i+j=k}^n b_{ij} x^i y^j = Q(x, y) \end{aligned} \quad (1)$$

($k > 1$) at infinity is studied with the aid of Poincaré's sphere and circle. Together with the fundamental system (1) the author considers
Card 1/4

S/044/62/000/006/011/127
B112/B104

Some questions relating ...

the comparison system

$$\begin{aligned} dx/dt &= \sum_{i+j=k}^n a_{ij} x^i y^j + \sum_{i+j=k}^n \bar{a}_{ij} x^i y^j = \bar{P}(x, y), \\ dy/dt &= \sum_{i+j=k}^n b_{ij} x^i y^j + \sum_{i+j=k}^n \bar{b}_{ij} x^i y^j = \bar{Q}(x, y), \end{aligned} \quad (2)$$

where the degree of the lowest terms of the comparison polynomials $\bar{P}(x, y)$ and $\bar{Q}(x, y)$ is not lower than that of the basic polynomials $P(x, y)$ and

$$\bar{Q}(x, y), \quad \sum_{i+j=k}^n |\bar{a}_{ij}| < \varepsilon \quad \text{and} \quad \sum_{i+j=k}^n |\bar{b}_{ij}| < \varepsilon. \quad \text{On the one hand, a represent-}$$

ingpoint P corresponds to each system (1) in the space of coefficients of this system, on the other, a certain qualitative representation of the behavior of the characteristics in Poincaré's circle ('Poincaré map').

The author shows that for each $\delta > 0$ it is possible to find a $\delta' > 0$ such that, if α_i is a singular equator point of the multiplicity $m > 1$, there is a representing point \bar{P} in the δ' -neighborhood of P for a definite representing point P . For this point \bar{P} m simple singular points lie on the equator in the δ -neighborhood of point α_i . If this number m is even, then the point

Card 2/4

S/O44/62/000/006/011/127
B112/B104

Some questions relating ...

\bar{P} can be chosen such that the singular point α_i vanishes. To improve the well-known concept of rough and non-rough systems, the author introduces the concept of a system rough in the large, that of a system rough at infinity, and that of strong roughness at a singular point. A system is called rough in the large if for any $\epsilon > 0$ there is a $\delta > 0$ such that a system (2) ξ -equivalent to system (1) in the large corresponds to any representing point \bar{P} from the δ -neighborhood of P , i. e., if there is topologic mapping that ξ -transforms the Poincaré map of system (1) into the Poincaré map of system (2). (This will be the case when each phase point M of system (1) is transformed into a phase point \bar{M} of system (2) in such a way that the differences $r - \bar{r}$ and $\varphi - \bar{\varphi}$ of the radius vectors and the polar angles of points M and \bar{M} with arbitrarily chosen origin do not exceed the modulus ϵ .) If the topologic equivalence holds not for all Poincaré circles but only for those from the neighborhood of the equator, then the system is called rough at infinity. A system is called rough in the origin if for systems (1) and (2) there is a unique number of exceptional directions for any point \bar{P} from the δ -neighborhood of P . These directions start from the origin, are all unique, and - with sufficiently small ϵ - change arbitrarily little during the transition from system (1) to system (2).
Card 3/4.

S/044/62/000/006/011/127
B112/B104

Some questions relating...

No other singular points are separated from the origin. For example, in the case of a system rough in the ordinary sense, the focus may be transformed into a node, while this is not the case with a very rough system. The system $dx/dt = y$, $dy/dt = 2y - x$ is rough in the ordinary sense, but not very rough because the origin is a degenerate node which is transformed into focus, however small the change of the coefficients may be. In this paper the author proves a number of theorems explaining the conditions of roughness in the large, of roughness at infinity, and of strong roughness. [Abstracter's note: Complete translation.]

Card 4/4

BRATKOVSKOY, K.A.

ALEKSEYEV, B.N.; YENIKHEYEV, G.Sh.; GLAGOLEV, A.V.; KISLOVA, A.M.; NORMAN, E.A.; LISOVSKIY, M.A.; BRATKOVSKOY, K.A.; SOROKIN, N.N., inzhener, redaktor; KHITROV, P.A., tekhnicheskiy redaktor

[Use of aerial photographs by railroad location parties] Ispol'-zovanie aerofotosnimkov v polevykh trassirovochnykh partiakh. Moskva, Gos. transp. zhel.-dor. izd-vo, 1955. 130 p. (MLRA 8:6)

1. Moscow. Vsesoyuznyy nauchno-issledovatel'skiy institut zheleznodorozhnogo stroitel'stva i proyektirovaniya.
(Railroads--Location) (Photography, Aerial)

BRATKOWSKA, J.

RECERPTA MEDICA Sec.4 Vol.9/8 Microbiology, etc. Aug 56

1973. BRATKOWSKA J., CHATYS-GÓRSKA L., HOFFMAN B., HUCZEK Z. and MARCINOWSKA H. I Klin. ped. A.M., Wrocław; Wojewodzkiej Stacji Sanitarno-Epidemiol., Wrocław. *Rola pałeczki z grupy Salmonella i Shigella oraz pałeczki okrężnicy w etiologii biegunek dziecięcych. The role of Salmonellae, Shigellae and Esch. coli in the aetiology of infantile diarrhoeas PEDIAT. POL. 1955, 30/3 (221-225) Tables 3

Investigations were carried out during the period from 23.6.1952 to 7.1.1954. Out of 150 children suffering from diarrhoea in 3 cases bacteria of Salmonella group, in 6 cases bacteria of Shigella group were isolated. Esch. coli of alpha type was found in 25 cases. Esch. coli of beta type was found in 23, in 9 cases both types of bacteria coli were found, 5 cases presented a mixed infection of Salmonella bacteria or Shigella and Esch. coli. One child presented 2 different bacteria of Shigella group. Out of 107 children from the clinical control group negative results of cultures of faeces for Salmonella and Shigella types were obtained in 100%. In one case S. typhosa was obtained from the CSF. Bacteria coli type alpha appeared in the faeces in 11 children of this group, type beta in 11, in 3 cases both types of bacteria coli were present.

In 50 healthy children all cultures from faeces for Salmonella, Shigella and Bacterium coli were negative. The authors consider the bacteria of the Salmonella and Shigella groups as the responsible aetiological factor. B. coli types of bacterium coli are also considered as the pathogenic factor in the cases discussed because they have appeared in a high percentage of the cases; they were the only bacteria isolated several times in the material presented. The high percentage of appearance of both types of Bacterium coli in the control group may indicate the spreading of these germs where the research work has been carried out.

Authors' summary

EXCERPTA MEDICA Sec. 6 Vol. 11/12 Dec. 57

BRATKOWSKA B.

7338. BRATKOWSKA B., OLEARCZYK J. and SCHLESINGER D. II Klin. Chor. Wewn. A.M., Wrocław; Stacji Krwiodawstwa, Wrocław. *Doświadczenia własne nad przetaczaniem krwi w białaczkach. Results of haemotherapy of leukaemia POL. ARCH. MED. WEWNĘT. 1956, 26/12 (1935-1938)

Of 40 patients with leukaemia, 30 were given one or more blood transfusions. This treatment was found to have a favourable influence on the general condition of the patients. The 18 patients who showed chronic leukaemia received together more than 50 l. blood over the last year without a single mild or severe case of shock. Five patients had mild pyretic reactions. Patients with lymphatic leukaemia tolerated the blood transfusions just as well as patients with other forms of leukaemia.

(VI, 5, 16)

BRATKOWSKA, B.

Excerpta Medica Sec. 6 Internal Medicine Vol. 9/5 May 55

3231. BRATKOWSKA B., JANIAKOWA A. and OLEARCZYK J. II Klin. Chorób wewnętrznych A. M., Wrocław; III Klin. Chorób wewnętrznych A. M., Wrocław. Przypadek parahemofilii. A case of parahaemophilia POL. TYG. LEK. 1954, 9/33 (1050-1052) Graphs 4 Tables 3

The case of a man of 28 with characteristic personal and familial anamnesis was examined and described in detail. The main finding was deficiency of Owren's factor V and the diagnosis of parahaemophilia was made. The thrombin generation test was delayed and the prothrombin consumption was impaired. The increased proteolysis in the serum is emphasized. Blood transfusions led to the shortening of the coagulation time for 24-48 hr.

Gibiński - Bytom

BRATKOWSKA, Barbara; MILEWICZ, Zygmunt

A case of diverticulum of cardial part of the stomach. Polski tygod.
lek. 10 no.9:273-275 28 Feb 55.

1. Z II Kliniki Chorob Wewetrznych A.M. we Wroclawiu; kierownik:
prof dr A.Falkiewicz i z Kliniki Radiologicznej A.M. we Wroclawiu;
p.o. kierownika: dr Z.Kubrakiewicz. Wroclaw, ul. Pasteura 4.
(STOMACH, diverticula,
cardiac part, surg.)

BRATKOWSKA, Barbara

A case of Ayerza's syndrome. Polski tygod.lek. 10 no.13:399-402
28 Mar 55.

1. Z Kliniki Chorob Wewnetrznych A.M. we Wroclawiu; kierownik:
prof. dr med. A. Falkiewicz.
(AYERZA'S SYNDROME)

BRATKOWSKA, Barbara; OLEARCZYK, Julian.

Case of vesicular pulmonary emphysema. Polski tygod. lek. 10 no.51:
1650-1653 19 Dec 55.

1. Z II Kliniki Wewnętrznej A.M. we Wrocławiu; kierownik: prof. dr.
med. A.Falkiewicz. Wrocław, II Kl. Chor. Wewn. A.M.
(EMPHYSEMA, PULMONARY, case reports,
(Pol))

BRATKOWSKA, Barbara

Liver function in systemic diseases of the hemopoietic system.
Polskie arch. med. wewn. 25 no.6:1067-1080 1955.

1. II Klinika Chorob Wewnętrznych A.M. we Wrocławiu. Kierownik:
prof. dr. med. A. Falkiewicz, Wrocław, ul. Klary Zetkin 71/10.
(HEMOPOIETIC SYSTEM, diseases,
liver funct. tests)
(LIVER FUNCTION TESTS, in various diseases,
hemopoietic dis.)

BRATKOWSKA, Barbara; OLEARCZYK, Julian; SCHLESINGER, Danuta

Experience on hemotherapy of leukoses. Polskie arch. med.
wewn. 26 no.12:1935-1938 1956.

1. Z II Kliniki Chorob Wewnętrznych A.M. we Wrocławiu
Kierownik: prof. dr. med. A. Falkiewicz i ze Stacji
Krwiodawstwa we Wrocławiu Dyrektor: dr. med. T. Dorobisz.
Wrocław, ul. Węglowa 5.

(LEUKEMIA, ther.

blood transfusion (Pol))

(BLOOD TRANSFUSION, in various dis.

leukemia (Pol))

BRATKOWSKA, Barbara; JANIAKOWA, Alina; OLEARCZYK, Julian

Case of pseudohemophilia. Polski tygod. lek. 11 no.27:1215-1219 2 July 56.

1. Z II Kliniki Chorob Wewnętrznych A.M. we Wrocławiu; kierownik: Prof. dr. med. Antoni Falkiewicz i z III Kliniki Chorob Wewnętrznych A.M. we Wrocławiu; kierownik: prof. dr. med. Edward Szczęklik, Wrocław, II Klinika Chorob Wewn. A.M., ul. Pasteura 4.
(HEMORRHAGIC DIATHESIS, case reports,
(Pol))

Bratkowska-Seniow - B

BRATKOWSKA-SENIOW, Barbara (Wroclaw, ul. Pasteura 4)

~~Clinical aspects of pulmonary syphilis.~~ Polskie arch. med. wewn. 27
no.7:891-907 1957.

1. Z II Kliniki Chorob Wewnętrznych A.M. we Wrocławiu Kierownik: prof.
dr Med. A. Falkiewicz.

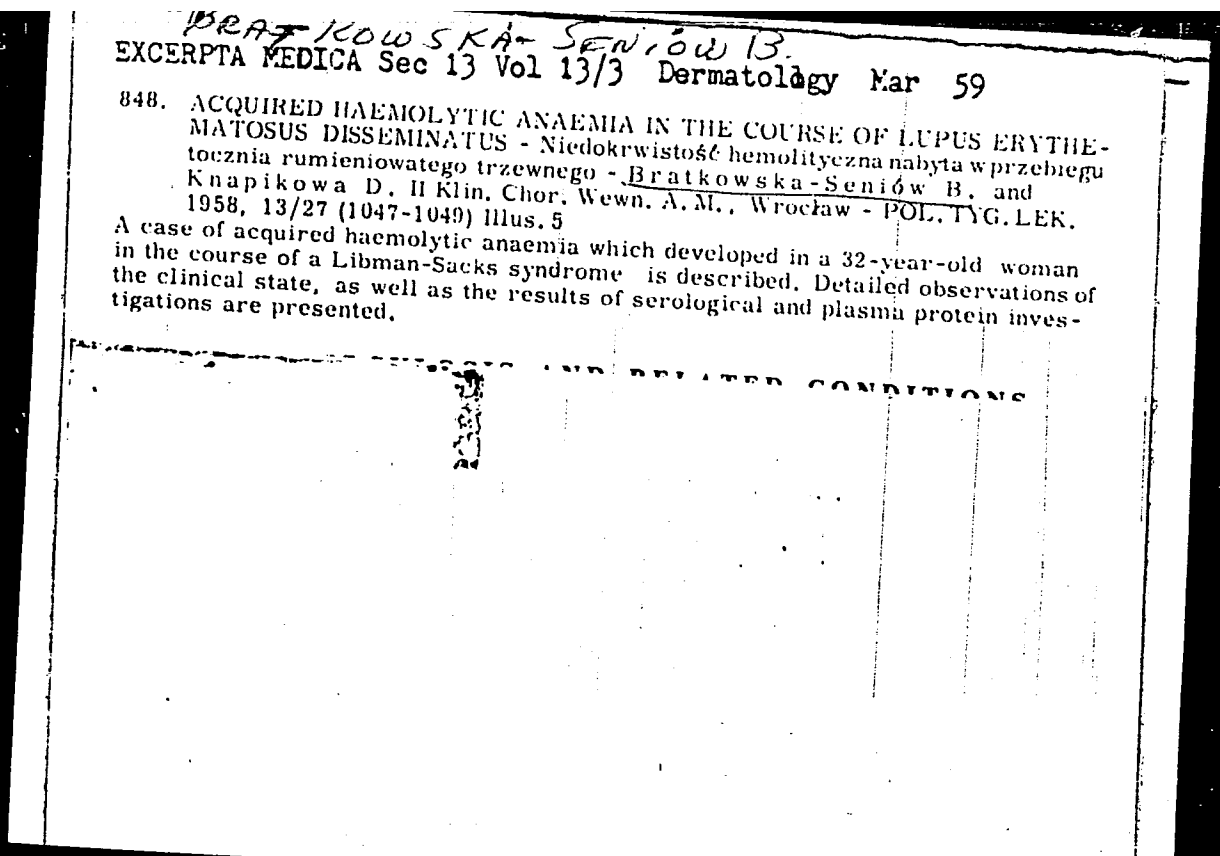
(SYPHILIS,
lungs (Pol))
(LUNG DISEASES,
syphilis (Pol))

EXCERPTA MEDICA Sec 15 Vol 12/6 Chest Dis. June 59

1411. PATHOGENESIS OF PRIMARY HAEMOSIDEROSIS OF THE LUNGS -
W sprawie patogeny pierwotnej hemosyderozy płuc (w związku ze spostrze-
ganym przypadkiem) - Pratkowska-Seniów B., Dzierżkowska W.
and Kubrakiewicz Z., II Klin. Chor. Wewn. A. M., Wrocław - POL.
TYG. LEK. 1958, 13/26 (994-998) illus. 7

A woman aged 38, with primary haemosiderosis of the lungs, showed general weakness, dyspnoea, secondary anaemia, subfebrile temperature and progressive emaciation. X-rays revealed densely dispersed small spots in both lungs, especially in the central area near the hilus. A chronic course with periodic remissions and recurrences is considered as specially characteristic. The X-ray diagnosis was supported by bone marrow examination, in which haemosiderosis crystals were found. On the grounds of a lowering of the complement level in the pre-stage of a crisis and during the crisis itself, and because of a direct Coombs' reaction, an immunological aetiology of primary haemosiderosis is assumed. The lungs should be regarded as shock organs. Cortisone and ACTH are recommended.

Warm - Łódź (XV, 6, 19)



BRATKOWSKI-SENIOW, Barbara, GRUSZKA, Stanislaw

Changes in blood proteins in Libman-Sacks disease. Polskie arch.
med.wewn. 28 no.2:167-178 1958

1. Z II Kliniki Chorob Wewnetrznych A.M. we Wroclawiu Kierownik:
prof. dr med. A. Palkiewicz. Adres autora: Wroclaw, ul. Pasteura 4, II
Klin. Chor. Wewn. A.M.

(LUPUS ERYTHEMATOSUS, DISSEMINATED, blood in
blood prtein changes (Pol))

(BLOOD PROTEINS, in various diseases
disseminated lupus erythematosus, protein changes (Pol))

BRATKOWSKI-SENIOW, Barbara, OLENIACZ, Wladyslawa

Comparative study of the blood proteins and urine in kidney diseases.
Polskie arch.med.wewn. 28 no.2:179-191 1958

1. Z II Kliniki Chorob Wewnętrznych A.M. we Wrocławiu. Kierownik:
prof. dr med. A. Falkiewicz. Adres autora: Wrocław, ul. Pasteura 4,
II Klin. Chor. Wewn. A.M.

(BLOOD PROTEINS, in various diseases
kidney dis. (Pol))

(KIDNEY DISEASES, physiology
blood protein & urine studies (Pol))

EXCERPTA MEDICA Sec 2 Vol 12/7 Physiology July 59

2690. THE SERUM PROTEINS IN SYSTEMIC DISEASES OF THE HAEMATOPOIETIC ORGANS. II - Badania nad białkami surowicy krwi w chorobach układowych narządów krwiotwórczych. II. Obraz białek surowicznych krwi w ostrej białaczce szpikowej - Bratkowska-Seniów B. II. Klin. Chor. Wewn. A.M., Wrocław - POL. ARCH. MED. WEWNĘT. 1958, 28/10 (1311-1320) Tables 1 Illus. 7

A considerable decrease of the albumin level and an increase of globulin, especially of α - and γ -globulin levels were found in acute myeloblastic leukaemia. (II, 6)

~~BRATKOWSKA-SENIOW, Barbara; KWIATKOWSKI, Stefan~~

Changes in the osseous system in chronic manifest lymphatic leukemia. Polskie arch. med. wewn. 29 no.6:797-808 1959.

1. Z II Kliniki Chorob Wewnętrznych A. M. we Wrocławiu Kierownik:
prof. dr med. A. Falkiewicz.
(LEUKEMIA LYMPHOCYTIC, pathol.)
(BONE AND BONES, pathol.)

BRATKOWSKA-SENIOW, Barbara

~~Studies on serum proteins in diseases of the hemopoietic organs.~~
V. Behavior of serum proteins in primary chronic reticulosis.
Polskie arch.med.wewnetrz. 29 no.10:1329-1332 '59.

1. Z II Kliniki Chorob Wewnetrznych A.M. we Wroclawiu.
(BLOOD PROTEINS)
(RETICULOENDOTHELIOSIS blood)

BRATKOWSKA-SENIOW, Barbara; DZIERZKONA, Wanda; GRUSZKA, Stanislaw; KOBER, Alicja

Immuno-hematological changes in visceral lupus erythematosus. Polskie arch.
med.wewnetrz. 29 no.12: 1593-1600-159.

1. Z II Kliniki Chorob Wewnetrznych A.M. we Wroclawiu. Kierownik: prof.
dr. med. A. Falkiewicz i z Wojewodskiej Stacji Krwiodawstwa we Wroclawiu
Kierownik: doc.dr.med. T.Dorobisz.
(LUPUS ERYTHEMATOSUS immnol.)

BRATKOWSKA-SENIOW, Barbara

Studies on blood serum proteins in systemic diseases of the hemopoietic system. VI. Pathological proteins appearing during the course of leukemias, malignant granuloma and primary reticulosis. Polskie arch.med.wewnetrz. 30 no.1:49-55 '60.

1. Z II Kliniki Chorob Wewnetrznych A.M. we Wroclawiu. Kierownik: prof.dr.med. A. Falkiewicz.

(BLOOD PROTEINS)

(LEUKEMIA blood)

(HODGKIN'S DISEASE blood)

(RETICULOENDOTHELIOSIS blood)

HRATKOWSKA-SENION, Barbara; DZIERZKOWA, Wanda; GHUSZKA, Stanislaw;
KNAPIKOWA, Danuta; KOBER, Alicja

Influence of treatment with adrenal cortex hormones on immuno-
hematological lesions in hemopoietic system diseases and in
visceral lupus erythematosus. Polskie arch.med.wewn. 30 no.3:
337-343 '60.

1. Z II Kliniki Chorob Wewnętrznych A.M. we Wrocławiu. Kierownik:
prof.dr med. A. Falkiewicz i z Wojewódzkiej Stacji Krwiodawstwa we
Wrocławiu. Dyrektor: doc.dr med. T. Dorobisz.

(ADRENAL CORTEX HORMONES ther.)

(HEMATOPOIETIC SYSTEM dis.)

(LUPUS ERYTHEMATOSUS ther.)

BRATKOWSKA-SENIOW, Barbara

Clinical aspects of Libman-Sacks syndrome. Polskie arch.med.wewn.
30 no.9:1201-1207 '60.

1. Z II Kliniki Chorob Wewnętrznych A.M. we Wrocławiu Kierownik:
prof. dr med. A.Falkiewicz
(LUPUS ERYTHEMATOSUS)

BRATKOWSKA-SENIOW, Barbara; DZIERZKOWA, Wanda; KOBER, Alicja

Serological syndromes observed during the course of primary
reticuloses. Cas.lek.cesk. 99 no.20/21:617-619 20 My '60

1. II interni klinika Lekarske akademie ve Vratislavi, prednosta
prof. dr. A.Falkiewicz a Transfuzni stanice ve Vratislavi,
prednosta doc. dr. T.Dorobisz
(RETICULOENDOTHERIOSIS immunol)

~~BRATKOWSKA-SENIOW, Barbara~~

Antibody-deficiency syndrome. Polskie arch. med. wewnetrz. 30
no.11:1419-1426 '60.

1. Z II Kliniki Chorob Wewnetrznych A.M. we Wroclawiu Kierownik:
prof. dr. med. A. ~~Salkiewicz~~.

(AGAMMAGLOBULININEMIA)

BRATKOWSKA-SENIOW, Barbara

On changes in the clinical course and form of malignant granuloma.
Polskie arch. med. wewnetrz. 30 no.12:1541-1550 '60.

1. Z II Kliniki Chorob Wewnetrznych A.M. we Wroclawiu Kierownik:
prof. dr med. A. Falkiewicz.

(HODGKIN'S DISEASE)

BRATKOWSKA-SENIOW, Barbara

Studies on blood serumproteins in systemic diseases of the hemopoietic system. VII. Immune-electrophoretic picture of the blood serum in diseases of the hemopoietic system. Polskie arch. med. wewnetrz. 31 no.1:1-6 '61.

(HEMATOPOIETIC SYSTEM immunol)
(BLOOD PROTEINS chem)

BRATKOWSKA-SENIOW, Barbara

Immuno-electrophoresis (investigation method and clinical studies).
Polskie arch. med. wewnetrz. 31 no.2:227-235 '61.

1. Z II Kliniki Chorob Wewnetrznych A.M. we Wroclawiu Kierownik:
prof. dr A. Falkiewicz.

(ELECTROPHORESIS) (BLOOD PROTEINS chem)

BRATKOWSKA-SENIOW, Barbara; DOKTORCZYK, Henryk; KWIATKOWSKI, Stefan

Malignant granuloma of the respiratory system. Polskie arch.
med. wewn. 31 no.4:549-558 '61.

1. Z II Kliniki Chorob Wewnętrznych AM we Wrocławiu Kierownik:
prof. dr A. Falkiewicz.

(LUNG NEOPLASMS case reports) (HODGKIN'S DISEASE case reports)

BRATKOWSKA-SENIOW, Barbara; DZIERZKOWA, Wanda; FALKIEWICZ, Antoni; SIMON, Julian

Auto-antibodies in thyroid diseases. I. General problem. Polskie arch.
med. wewn. 31 no.6:779-782 '61.

1. Z II Kliniki Chorob Wewn. AM we Wrocławiu Kierownik: prof. dr med.
A. Falkiewicz z Wojewódzkiej Stacji Krwiodawstwa we Wrocławiu Kierownik:
doc. dr med. T. Dorobisz i z Zakładu Anatomii Patologicznej AM we
Wrocławiu Kierownik: prof. dr med. Z. Albert.

(THYROID GLAND dis) (ANTIBODIES)

BRATKOWSKA-SENIOW, Barbara; DZIERZKOWA, Wanda; FALKIEWICZ, Antoni; SIMON, Julian

Auto-antibodies in thyroid diseases. II. Our studies. Polskie arch.
med. wewn. 31 no.6:783-796 '61.

1. Z II Kliniki Chorob Wewnętrznych AM we Wrocławiu Kierownik: prof.
dr med. A. Falkiewicz z Wojewódzkiej Stacji Krwiodawstwa we Wrocławiu
Kierownik: doc. dr med. T. Dorobisz i z Zakładu Anatomii Patologicznej
AM we Wrocławiu Kierownik: prof. dr med. Z. Albert.

(THYROID GLAND dis) (ANTIBODIES)

BRATKOWSKA-SENIOW, Barbara; CHECINSKA, Zofia; SZYMANSKA, Janina

Immunoelectrophoretic picture of the blood serum in liver cirrhosis.
Polskie arch. med. wewn. 31 no.7:929-933 '61.

1. Z II Kliniki Chorob Wewnętrznych AM we Wrocławiu Kierownik: prof.
dr med. A. Falkiewicz.

(LIVER CIRRHOSIS blood) (BLOOD PROTEINS)

BRATKOWSKA-SENIOW, Barbara

Haptoglobin. Polskie arch. med. wewn. 31 no.8:1119-1126 '61.

1. Z II Kliniki Chorob Wewnętrznych AM we Wrocławiu Kierownik: prof.
dr med. A. Falkiewicz.

(MUCOPROTEINS blood)

BRATKOWSKA-SENIOW, Barbara

The immunoelectrophoretic picture of the blood serum in collagen diseases. Pol. arch. med. wewnet. 32 no.1:11-17 '62.

1. Z II Kliniki Chorob Wewnetrznych AM we Wroclawiu Kierownik: prof. dr med. A. Falkiewicz.

(COLLAGEN DISEASES blood) (BLOOD PROTEINS)
(ELECTROPHORESIS)

BRATKOWSKA-SENIOW, Barbara; GRUSZKA, Stanislaw

The hematopoietic system and serum protein picture in liver cirrhosis.
Pol. arch. med. wewnet. 32 no.2:163-168 '62.

1. Z II Kliniki Chorob Wewnetrznych AM we Wroclawiu Kierownik: prof. dr
med. A. Falkiewicz.

(LIVER CIRRHOSIS blood) (BLOOD PROTEINS)
(HEMATOPOIETIC SYSTEM physiol)

BRATKOWSKA-SENIOW, Barbara; DZIERZKOWA, Wanda; FALKIEWICZ, Antoni; SIMON, Julian

The intradermal test in detecting anti-thyroid antibodies. Pol. arch. med. wewnet. 32 no.2:169-178 '62.

1. Z II Kliniki Chorob Wewnętrznych AM we Wrocławiu Kierownik: prof. dr med. A. Falkiewicz i z Wojewódzkiej Stacji Krwiodawstwa we Wrocławiu Kierownik: doc. dr med. T. Dorobisz oraz z Zakładu Anatomii Patologicznej AM we Wrocławiu Kierownik: prof. dr med. Z. Albert.

(ANTIBODIES) (THYROID GLAND immunol)

POLAND

BRATKOWSKA-SENIOW, Barbara, DOKTORCZYK, Henryk, and TAWLAS, Nikos, Second Clinic of Internal Diseases (II Klinika Chorob Wewnetrznych), AM [Akademia Medyczna, Medical Academy] in Wroclaw (Director: Prof. Dr. A. FALKIEWICZ)

"Clinical Picture of Pleural Endothelioma. Report of 10 Cases."
Warsaw, Polski Tygodnik Lekarski, Vol 18, No 10, 4 Mar 63,
pp 361-367.

Abstract: [Authors' English summary modified] Review of the literature and study of 10 cases, with description of clinical course and special attention to intravital diagnosis. Symptoms prevalent in diffuse form of disease are given, and difficulties in diagnosing atypical course are discussed. Attention is drawn to the large amount of pleural fluid and its characteristic contents. Hyaluronic acid test is helpful in the diagnosis. Proper diagnosis requires check of both presence of characteristic clinical symptoms and pleural liquid examination. Of the 13 references, 7 are Polish, one (1) Russian, 2 English, and 3 French.

1/1

BRATKOWSKA-SENIOW, Barbara; GRUSZKA, Stanislaw

Changes of the peripheral blood picture under the influence
of radiotherapy of malignant granuloma. Pol. arch. med. wewn.
33 no.3:243-246 '63.

1. Z II Kliniki Chorob Wewnetrznych AM we Wroclawiu Kierownik:
prof. dr med. A. Falkiewicz.

(HODGKIN'S DISEASE) (RADIATION INJURY)
(LEUKOCYTES) (ERYTHROCYTES) (EOSINOPHILIA)
(NEOPLASM RADIOTHERAPY)

HRATKOWSKA-SENIOW, Barbara; DZIERZKOWA, Wanda; FALKIEWICZ, Antoni;
SIMON, Julian.

Immunological studies in thyroiditis. Pol. arch.med.wewnet.
33 no.12:1349-1351 '63.

Immunological studies in thyroid neoplasms. Ibid:1353-1354

Immunological studies in toxic adenoma. Ibid:1355-1357

1. Z II Kliniki Chorob Wewnętrznych AM we Wrocławiu (kierownik: prof.dr.med. A.Falkiewicz) ; z Wojewodzkiej Stacji Krwiodawstwa we Wrocławiu (kierownik: doc.dr.med. T.Dorobisz) i z Zakładu Anatomii Patologicznej AM we Wrocławiu (kierownik: prof.dr.med. Z.Albert).

*

BRATKOWSKA-SZKLARSKA Z. | Warszawa.

*Sestawienie porównawcze kilku prób czynnościowych w chorobach wątroby. Comparison of some liver function tests in liver diseases POLSK, ARCH. MED. WEWNET. 1953, 23/2 (185-202) Graphs 11 Tables 14

The Takata-Ara, Weltmann, cadmium and Lugol tests were carried out in 108 cases (hepar venostaticum, cholecystitis, infectious hepatitis, cirrhosis hepatis, neoplasma malignum hepatis). The results of the tests were found to be correlated not only with the liver parenchyma but also with the functional state of the kidneys and of the haematopoietic system.

Neyman-Bogdanik - Wrocław

SO: EXCERPTA MEDICA - Section II, Vol. 7, No. 10

EXCERPTA MEDICA Sec 6 Vol 13/1 Internal Med. Jan 59

309. ULCERATION OF THE MUCOUS MEMBRANE OF STOMACH AND DUODENUM IN PATIENTS WITH CHRONIC CIRCULATION FAILURE - Owrzodzenia błony śluzowej żołądka i dwunastnicy u chorych z przewlekłą niewydolnością krążenia - Bratkowska - Szklarska Z. 1 Odd. Chorób Wewn. Szpit. Miejskiego Nr 4, Warszawa - POL. TYG. LEK. 1957, 12/44 (1688-1691)

Tables 3
Clinicians too rarely diagnose peptic ulcer disease of the stomach and duodenum in patients with chronic circulation failure (in 26 cases only out of 2,228 patients) while the anatomopathologists frequently find ulcerations of the mucous membrane of stomach or duodenum at the autopsy of such cases (in 228 cases out of 886). It must be supposed that the cause of such a frequent appearance of ulcerations of the mucous membrane of stomach and duodenum in the patients with chronic circulation failure lies in a prolonged passive congestion and a decrease of resistance of the mucous membrane of stomach and duodenum. In addition to this is the irritation caused by drugs administered orally (ammonium chloride, caffeine, serpasil, digitalis), especially cardiac drugs and, above all, digitalis glucosides which act on the vagus nerve and produce vasospastic changes and motor and secretory disorders in the mucous membrane of stomach and duodenum. (VI, 9)

CHYZANOWSKI, Andrzej; BRATKOWSKI, Andrzej (Warszawa)

Remarks on the organization and realization of the necessary supporting background for large construction works. Przegł budowl i bud mieszk 36 no. 1:19-21 Ja '64.

REEL #07
BOYKO, V.B.
to
BRATKOWSKI, And

END