



**Directorate of
Intelligence**

Economic & Energy Indicators

20 January 1984

*DI EEI 84-002
20 January 1984*

This publication is prepared for the use of US Government officials, and the format, coverage, and content are designed to meet their specific requirements. US Government officials may obtain additional copies of this document directly or through liaison channels from the Central Intelligence Agency.

Requesters outside the US Government may obtain subscriptions to CIA publications similar to this one by addressing inquiries to:

**Document Expediting (DOCEX) Project
Exchange and Gift Division
Library of Congress
Washington, D.C. 20540**

or: **National Technical Information Service
5285 Port Royal Road
Springfield, VA 22161**

Requesters outside the US Government not interested in subscription service may purchase specific publications either in paper copy or microform from:

**Photoduplication Service
Library of Congress
Washington, D.C. 20540**

or: **National Technical Information Service
5285 Port Royal Road
Springfield, VA 22161
(To expedite service call the
NTIS Order Desk (703) 487-4650**

Comments and queries on this paper may be directed to the DOCEX Project at the above address or by phone (202-287-9527), or the NTIS Office of Customer Services at the above address or by phone (703-487-4660). Publications are not available to the public from the Central Intelligence Agency.

**Economic & Energy
Indicators**

Economic	Industrial Production	1
	Gross National Product	1
	Consumer Prices	1
	Money Supply	2
	Unemployment Rate	2
	Foreign Trade	3
	Current Account Balance	3
	Export Prices in US \$	4
	Import Prices in US \$	4
	Exchange Rate Trends	5
	Money Market Rates	5
	Agricultural Prices	6
	Industrial Materials Prices	7
Energy	World Crude Oil Production, Excluding Natural Gas Liquids	8
	Big Seven: Inland Oil Consumption	9
	Big Seven: Crude Oil Imports	9
	OPEC: Crude Oil Official Sales Price	10
	OPEC: Average Crude Oil Official Sales Price (Chart)	11

Industrial Production

Percent Change From Previous Period
(Seasonally Adjusted at an Annual Rate)

	1980	1981	1982	1983				
				1st Qtr	2d Qtr	3d Qtr	Sep	Oct
United States	-3.6	2.6	-8.1	9.9	18.4	21.5	16.6	9.8
Japan	4.7	1.0	0.4	3.6	6.5	12.3	5.8	
West Germany	-0.8	-2.7	-3.1	4.4	9.3	1.4		
France	-0.7	-2.6	-1.5	2.1	4.2			
United Kingdom	-6.4	-5.1	1.5	4.8	0.7	6.2	1.2	
Italy	5.5	-2.4	-2.2	-1.9	-10.4	-4.9	324.2	
Canada	-1.5	0.9	-10.7	22.3	12.3			

Gross National Product

Percent Change From Previous Period
(Constant Market Prices; Seasonally Adjusted at an Annual Rate)

	1980	1981	1982	1983		
				1st Qtr	2d Qtr	3d Qtr
United States	-0.3	2.6	-1.9	2.6	9.7	7.9
Japan	4.8	3.9	2.9	0.9	3.6	
West Germany	1.8	-0.2	-1.1	2.5	4.3	
France	1.1	0.2	1.7			
United Kingdom	-2.1	-2.2	1.4	8.6	-7.1	
Italy	3.9	0.1	-0.3	1.7	-6.5	
Canada	1.0	3.4	-4.4	7.6	7.5	

Consumer Prices

Percent Change From Previous Period
(Seasonally Adjusted at an Annual Rate)

	1980	1981	1982	1983			
				1st Qtr	2d Qtr	3d Qtr	Oct
United States	13.5	10.3	6.2	-0.4	4.2	4.8	
Japan	8.0	4.9	2.6	0.6	1.1	0.3	9.8
West Germany	5.5	6.0	5.3	0.5	1.4	5.1	2.2
France	13.5	13.3	12.0	11.0	10.6	9.1	
United Kingdom	18.0	11.9	8.6	3.6	2.0	7.8	6.1
Italy	21.2	19.3	16.4	13.4	14.2	12.6	19.8
Canada	10.2	12.5	10.8	3.0	4.2	6.5	

Money Supply, M-1

Percent Change From Previous Period
(Based on Amounts in National Currency Units; Seasonally Adjusted at an Annual Rate)

	1980	1981	1982	1983				
				1st Qtr	2d Qtr	3d Qtr	Oct	Nov
United States ^a	6.2	7.1	6.5	14.8	12.8	9.2	1.4	
Japan	0.8	3.7	7.1	-0.3	0.3	11.5		
West Germany	2.3	1.2	3.6	21.5	11.2	6.4		
France	8.5	12.6	13.9	6.5	12.0			
United Kingdom	4.5	NA	NA	9.8	16.6	8.5		
Italy	15.8	11.2	11.6	11.8	6.1			
Canada	6.4	4.0	1.0	28.1	11.4	10.0	-3.1	27.0

^a Including M1-A and M1-B.

Unemployment Rate ^a

Percent
(Seasonally adjusted)

	1980	1981	1982	1983				
				1st Qtr	2d Qtr	3d Qtr	Oct	Nov
United States	7.1	7.5	9.6	10.2	10.0	9.3	8.7	
Japan	2.0	2.2	2.4	2.7	2.7	2.7		
West Germany	3.9	5.6	7.7	8.8	9.6	9.6	9.4	
France	6.3	7.6	8.4	8.4	8.4	8.5	8.7	8.8
United Kingdom	6.4	10.0	11.7	12.5	12.5	12.4	12.3	
Italy	7.6	8.4	9.1	9.8	9.9	9.8		
Canada	7.5	7.6	11.1	12.5	12.4	11.7	11.1	

^a Unemployment rates for France are estimated. For comparison with the US rate, the rates for France and the United Kingdom should be increased by 5 percent and 15 percent respectively. Italian rates should be decreased by 50 percent; the rates for Japan, Canada, and West Germany are comparable to US rates.

Foreign Trade**Billion US \$, f.o.b.
(Seasonally Adjusted)**

	1980	1981	1982	1983			
				1st Qtr	2d Qtr	3d Qtr	Sep
United States^a							
Exports	220.7	233.5	212.3	50.5	48.6	50.6	17.4
Imports	245.0	261.0	244.0	58.6	62.3	66.9	22.2
Balance	-24.3	-27.5	-31.6	-8.1	-13.7	-16.3	-4.8
Japan							
Exports	126.3	149.5	138.3	35.5	35.5	36.2	12.1
Imports	124.7	129.5	119.8	28.5	27.6	27.9	9.8
Balance	1.6	20.1	18.4	7.0	7.9	8.3	2.3
West Germany							
Exports	193.0	175.3	176.4	43.6	43.1	41.5	14.0
Imports ^b	188.0	163.4	155.3	38.1	38.9	37.7	12.9
Balance	4.9	11.9	21.1	5.5	4.2	3.8	1.1
France							
Exports	116.0	106.3	96.4	23.9	23.4	23.3	7.7
Imports	130.1	115.6	110.5	27.3	25.1	23.7	7.7
Balance	-14.1	-9.3	-14.0	-3.5	-1.7	-0.4	0
United Kingdom							
Exports	110.2	102.5	97.0	22.6	22.8	22.4	7.8
Imports	107.2	96.1	93.5	22.9	23.8	23.0	7.6
Balance	3.0	6.4	3.6	-0.3	-1.0	-0.6	0.2
Italy							
Exports	78.0	75.4	74.2	18.9	18.2	17.8	6.1
Imports	100.3	91.4	87.0	21.9	19.6	20.3	6.9
Balance	-22.3	-15.9	-12.8	-3.0	-1.4	-2.5	-0.9
Canada							
Exports	65.9	70.5	68.6	16.9	18.4	18.6	6.3
Imports	58.4	64.3	53.7	13.6	14.1	15.3	5.4
Balance	7.5	6.2	14.8	3.3	4.3	3.3	0.9

^a Imports are customs values.^b Imports are c.i.f.**Current Account Balance^a****Billion US \$**

	1980	1981	1982	1983				
				1st Qtr	2d Qtr	Jul	Aug	Sep
United States	0.4	4.6	-11.2	-3.6	-9.7			
Japan	-10.7	4.8	6.9	1.4	6.3	2.9	1.4	2.7
West Germany	-16.5	-6.8	3.4	1.7	0.8	-1.2	-1.1	-0.2
France	-7.8	-5.5	-12.1	-3.6				
United Kingdom	7.0	NA	9.3	1.2	-0.5	-0.3	0	0.4
Italy	-9.7	-8.5	-5.8	-2.0				
Canada	-0.9	-4.8	2.4	0.2	0.9			

^a Converted to US dollars at current market rates of exchange.^b Seasonally adjusted.

Export Prices in US \$**Percent Change From Previous Period at an Annual Rate**

	1980	1981	1982	1983			
				1st Qtr	2d Qtr	Aug	Sep
United States	10.6	9.2	1.5	3.1	1.5		
Japan	6.6	5.5	-6.4	10.6	-7.2	-12.5	49.6
West Germany	7.2	-15.2	-3.0	14.0	-10.8	-84.8	5.7
France	11.7	-12.0	-5.5	13.0	-16.6	-23.5	
United Kingdom	22.5	NA	-7.3	-14.0	15.7		
Italy	17.4	-7.8	-3.3	-3.4	-14.1		
Canada	17.4	3.9	-2.3	3.3	-11.7	1.1	-31.9

Import Prices in US \$**Percent Change From Previous Period at an Annual Rate**

	1980	1981	1982	1983			
				1st Qtr	2d Qtr	Aug	Sep
United States	27.3	5.3	-2.0	-12.3	-4.3		
Japan	35.5	3.6	-7.3	-4.1	-18.4	-23.5	20.3
West Germany	15.7	-8.3	-5.4	-3.1	-13.4		
France	19.4	-7.8	-7.2	3.7	-19.4	-25.1	
United Kingdom	24.2	NA	-6.1	-11.0	7.2		
Italy	26.1	1.1	-7.3	1.4	-31.1		
Canada	16.8	8.7	-1.1	-1.5	-12.5	66.0	-32.4

Exchange Rate Trends
Percent Change From Previous Period at an Annual Rate

	1980	1981	1982	1983				
				1st Qtr	2d Qtr	3d Qtr	Oct	Nov
Trade-Weighted								
United States	-0.4	10.5	10.6	-6.0	9.2	13.1	-14.2	21.5
Japan	-4.2	9.3	-5.7	46.5	5.2	-1.3	48.9	0.7
West Germany	0.2	-2.1	7.0	10.4	4.2	-4.1	15.7	-8.0
France	0.5	-5.1	-6.1	6.7	-16.9	-4.2	0.4	-4.0
United Kingdom	9.8	2.5	-2.1	-31.1	24.3	7.2	-16.7	12.3
Italy	-4.1	-9.2	-5.1	4.5	-4.9	-4.6	-2.7	-3.4
Canada	-0.1	0.3	0.2	0.2	1.4	-3.6	-4.5	1.5
Dollar Cost of Foreign Currency								
Japan	-3.5	2.7	-12.8	31.5	-4.1	-7.7	39.2	-12.9
West Germany	0.8	-24.6	-7.2	14.1	-13.4	-28.2	26.6	-28.6
France	0.7	-28.7	-20.8	10.1	-38.2	-29.5	16.0	-21.8
United Kingdom	9.6	-13.2	-13.4	-25.3	5.5	-10.7	-0.2	-7.4
Italy	-3.1	-32.8	-18.8	9.4	-23.8	-29.1	14.4	-22.3
Canada	0.2	-2.5	-2.9	1.7	-1.2	-0.6	0.5	-1.6

Money Market Rates
Percent

	1980	1981	1982	1983	
				1st Qtr	2d Qtr
United States 90-day certificates of deposit, secondary market	13.29	16.24	12.49	8.67	8.61
Japan loans and discounts (2 months)	8.32	7.79	7.23	7.12	
West Germany interbank loans (3 months)	9.66	12.19	8.82	5.66	5.23
France interbank money market (3 months)	12.39	15.47	14.68	12.74	12.22
United Kingdom sterling interbank loans (3 months)	16.72	13.85	12.24	11.16	10.28
Italy Milan interbank loans (3 months)	17.71	20.13	20.15	19.16	18.38
Canada finance paper (3 months)	12.93	18.46	14.48	9.74	
Eurodollars 3-month deposits	14.23	16.87	13.25	9.25	9.12

Agricultural Prices

	1980	1981	1982	1983					
				1st Qtr	2d Qtr	3d Qtr	Oct	Nov	Dec
Beef (# per pound)									
Australia (Boneless beef, f.o.b., US Ports)	125.9	113.5	108.7	109.2	112.9	111.8	111.2	109.2	NA
United States (Wholesale steer beef, midwest markets)	104.3	100.0	101.4	96.7	104.9	95.5	91.0	90.2	98.4
Cocoa (# per pound)	113.5	89.8	74.3	80.5	90.3	97.4	91.3	97.1	112.0
Coffee (\$ per pound)	1.54	1.28	1.40	1.26	1.26	1.30	1.41	1.45	1.47
Corn (Central Illinois No. 2 yellow, \$ per bushel)	3.01	3.14	2.42	2.59	3.10	3.43	3.36	3.38	3.26
Cotton (Memphis middling 1 1/16 inch, \$ per pound)	0.8219	0.7243	0.6073	0.6311	0.6755	0.7163	0.7240	0.7332	0.7218
Palm Oil (United Kingdom 5% bulk, c.i.f., \$ per metric ton)	583.08	570.67	445	372	415	543	671	661	NA
Rice (New Orleans No. 2, milled f.o.b., \$ per metric ton)	496	565	367	368	375	386	386	386	386
Soybeans (Central Illinois No. 1 yellow, \$ per bushel)	6.95	6.98	5.86	5.71	6.06	7.80	8.25	8.01	7.77
Soybean Oil (\$ per pound)	0.2375	0.2129	0.1837	0.1711	0.1953	0.2873	0.3062	0.2808	0.2732
Sugar (World raw London, bulk # per pound)	28.63	16.88	8.42	6.21	8.75	10.19	9.76	8.42	7.78
Wheat (Kansas City No. 2 hard winter, \$ per bushel)	4.33	4.36	4.00	4.07	4.05	3.82	3.83	3.81	3.84
Food Index ^a (1975=100)	232	203	167	164	178	194	199	199	201

^a The food index is compiled by *The Economist* for 16 food commodities which enter international trade. Commodities are weighted by 3-year moving averages of imports into industrialized countries.

Industrial Materials Prices

	1980	1981	1982	1983					
				1st Qtr	2d Qtr	3d Qtr	Oct	Nov	Dec
Aluminum (¢ per pound)									
Major US producer	71.6	77.3	76.0	76.0	76.0	77.7	81.0	81.0	81.0
LME cash	80.8	57.4	44.9	54.2	64.6	71.7	71.1	68.2	70.4
Chrome Ore 50.0 (South Africa chemical grade, \$ per metric ton)									
	55.0	53.0	50.9	50.0	50.0	50.0	50.0	50.0	50.0
Copper ^a (bar, ¢ per pound)									
	98.7	79.0	67.1	72.6	77.7	74.0	65.2	62.0	64.2
Gold (\$ per troy ounce)									
	612.1	460.0	375.5	465.1	426.9	417.6	394.1	381.7	388.0
Lead ^a (¢ per pound)									
	41.1	32.9	24.7	20.7	19.7	18.2	19.0	18.3	18.3
Manganese Ore (48% Mn, \$ per long ton)									
	78.5	82.1	79.9	78.2	75.4	69.8	69.8	69.8	69.8
Nickel (\$ per pound)									
Composite US producer	3.5	3.5	3.2	3.2	3.2	3.2	3.2	3.2	3.2
LME Cash	3.0	2.7	2.2	1.9	2.2	2.2	2.1	2.1	2.1
Platinum (\$ per troy ounce)									
Major producer	439.5	475.0	475.0	475.0	475.0	475.0	475.0	475.0	475.0
Metals week, New York dealers' price	677.0	446.0	326.7	444.3	419.2	434.9	396.0	386.1	395.0
Rubber (¢ per pound)									
Synthetic ^b	40.6	47.5	45.7	48.1	40.9	44.3	41.3	44.0	NA
Natural ^c	73.8	56.8	45.4	49.8	56.8	59.2	59.9	58.5	58.1
Silver (\$ per troy ounce)									
	20.7	10.5	7.9	12.3	12.1	12.0	9.9	8.8	9.1
Steel Scrap ^d (\$ per long ton)									
	91.2	92.0	63.1	67.0	69.7	74.6	77.6	80.4	NA
Tin ^a (¢ per pound)									
	761.3	641.4	581.6	580.9	615.1	587.0	587.3	589.0	565.0
Tungsten Ore (contained metal, \$ per metric ton)									
	18,219	18,097	13,426	10,356	11,118	9,857	10,041	9,158	8,928
US Steel (composite, \$ per long ton)									
	486.2	543.5	567.3	582.3	587.2	590.6	600.8	600.8	NA
Zinc ^a (¢ per pound)									
	34.4	38.4	33.7	31.0	32.5	36.1	38.9	39.1	38.9
Lumber Index ^e (1975=100)									
	167	159	140	187	202	187	182	182	188
Industrial Materials Index ^f (1975=100)									
	184	166	142	142	154	158	152	152	152

^a Approximates world market price frequently used by major world producers and traders, although only small quantities of these metals are actually traded on the LME.

^b S-type styrene, US export price.

^c Quoted on New York market.

^d Average of No. 1 heavy melting steel scrap and No. 2 bundles delivered to consumers at Pittsburgh, Philadelphia, and Chicago.

^e This index is compiled by using the average of 11 types of lumber whose prices are regarded as bellwethers of US lumber construction costs.

^f The industrial materials index is compiled by *The Economist* for 19 raw materials which enter international trade. Commodities are weighted by 3-year moving averages of imports into industrialized countries.

**World Crude Oil Production
Excluding Natural Gas Liquids**

Thousand b/d

	1980	1981	1982	Preliminary			
				1983			
				1st Half	3d Qtr	Sep	Oct
World	59,469	55,818	53,053	50,525	54,163	54,370	
Non-Communist countries	45,244	41,593	38,803	36,310	39,567	39,965	
Developed countries	12,859	13,579	13,276	13,560	13,831	13,948	
United States	8,597	8,572	8,658	8,699	8,675	8,683	8,670
Canada	1,424	1,285	1,270	1,264	1,393	1,450	
United Kingdom	1,619	1,811	2,094	2,193	2,319	2,387	
Norway	528	501	518	601	600	588	
Other	691	717	736	803	844	840	873
Non-OPEC LDCs	5,444	6,027	6,636	6,724	6,902	6,914	6,943
Mexico	1,937	2,312	2,749	2,660	2,724	2,712	2,659
Egypt	595	598	665	672	704	710	715
Other	2,912	3,117	3,222	3,392	3,474	3,492	3,569
OPEC	26,941	22,680	18,891	16,026	18,834	19,103	18,779
Algeria	1,020	803	701	650	700	700	700
Ecuador	204	211	211	207	239	237	250
Gabon	175	151	154	158	160	150	150
Indonesia	1,576	1,604	1,314	1,185	1,350	1,400	1,400
Iran	1,662	1,381	2,282	2,484	2,667	2,700	2,400
Iraq	2,514	993	972	850	983	950	1,000
Kuwait ^b	1,389	947	663	761	983	1,150	1,100
Libya	1,830	1,137	1,183	1,018	1,117	1,150	1,150
Neutral Zone ^c	544	370	317	340	460	453	410
Nigeria	2,058	1,445	1,298	1,133	1,410	1,218	1,290
Qatar	471	405	328	244	291	309	350
Saudi Arabia ^b	9,631	9,625	6,327	4,073	5,600	5,800	5,700
UAE	1,702	1,500	1,248	1,082	1,157	1,160	1,140
Venezuela	2,165	2,108	1,893	1,841	1,717	1,726	1,739
Communist countries	14,225	14,225	14,250	14,215	14,596	14,405	
USSR	11,700	11,790	11,800	11,890	12,216	11,900	11,900
China	2,118	2,024	2,040	2,085	2,100	2,085	2,085
Other	407	411	410	240	280	420	

^a Preliminary.

^b Excluding Neutral Zone production, which is shown separately.

^c Production is shared equally between Saudi Arabia and Kuwait.

Big Seven: Inland Oil Consumption

Thousand b/d

	1980	1981	1982	1983							
				Apr	May	Jun	Jul	Aug	Sep	Oct	Nov
United States ^a	17,006	16,058	15,296	14,779	14,250	15,281	14,913	15,240	15,396	14,947	15,513
Japan	4,674	4,444	4,204	3,852	3,461	3,888	3,752	3,907	4,043		
West Germany	2,356	2,120	2,024	1,940	2,010	2,058	1,783	1,920	2,029	2,088	
France	1,965	1,744	1,632	1,786	1,498	1,399	1,209	1,347	1,414	1,495	1,765
United Kingdom	1,422	1,325	1,345	1,313	1,227	1,257	1,148	1,216	1,305		
Italy ^b	1,602	1,705	1,618	1,417	1,468	1,472	1,365	1,297	1,588	1,624	1,794
Canada	1,730	1,617	1,454	1,187	1,313	1,350	1,262	1,432	1,382	1,361	

^a Including bunkers, refinery fuel, and losses.^b Principal products only.**Big Seven: Crude Oil Imports**

Thousand b/d

	1980	1981	1982	1983							
				Apr	May	Jun	Jul	Aug	Sep	Oct	Nov
United States	5,220	4,406	3,488	2,970	3,234	3,502	3,868	4,174	4,221	3,446	3,265
Japan	4,373	3,919	3,657	3,604	2,975	3,337	3,007	2,981	3,590		
West Germany	1,953	1,591	1,451	1,279	1,385	1,274	1,313	1,248	1,421	1,156	
France	2,182	1,804	1,596	1,148	1,331	1,492	1,438	1,399	1,254	1,393	
United Kingdom	893	736	565	303	537	467	494	462	587		
Italy	1,860	1,816	1,710	1,485	1,485	1,485					
Canada	557	521	334	143	93	137	325	381			

OPEC: Crude Oil Official Sales Price ^a

US \$ per barrel

	1979	1980	1981	1982	1983		
					Sep	Oct	Nov
OPEC average ^b	18.67	30.87	34.50	33.63	28.69	28.70	28.59
Algeria 42° API 0.10% sulfur	19.65	37.59	39.58	35.79	30.50	30.50	30.50
Ecuador 28° API 0.93% sulfur	22.41	34.42	34.50	32.96	26.70	26.70	26.70
Gabon 29° API 1.26 % sulfur	18.20	31.09	34.83	34.00	29.00	29.00	29.00
Indonesia 35° API 0.09% sulfur	18.35	30.55	35.00	34.92	29.53	29.53	29.53
Iran							
Light 34° API 1.35% sulfur	19.45	34.54	36.60	31.05	28.00	28.00	28.00
Heavy 31° API 1.60% sulfur	18.49	33.60	35.57	29.15	27.10	27.10	27.10
Iraq ^c 35° API 1.95% sulfur	18.56	30.30	36.66	34.86	29.43	29.43	29.43
Kuwait 31° API 2.50% sulfur	18.48	29.84	35.08	32.30	27.30	27.30	27.30
Libya 40° API 0.22% sulfur	21.16	36.07	40.08	35.69	30.40	30.40	30.40
Nigeria 34° API 0.16% sulfur	20.86	35.50	38.48	35.64	29.85	29.85	29.85
Qatar 40° API 1.17% sulfur	19.72	31.76	37.12	34.56	29.49	29.49	29.49
Saudi Arabia							
Berri 39° API 1.16% sulfur	19.33	30.19	34.04	34.68	29.50	29.50	29.50
Light 34° API 1.70% sulfur	17.26	28.67	32.50	34.00	29.00	29.00	29.00
Medium 31° API 2.40% sulfur	16.79	28.12	31.84	32.40	27.40	27.40	27.40
Heavy 27° API 2.85% sulfur	16.41	27.67	31.13	31.00	26.00	26.00	26.00
UAE 39° API 0.75% sulfur	19.81	31.57	36.42	34.74	29.56	29.56	29.56
Venezuela 26° API 1.52% sulfur	17.22	28.44	32.88	32.88	27.88	27.88	27.88

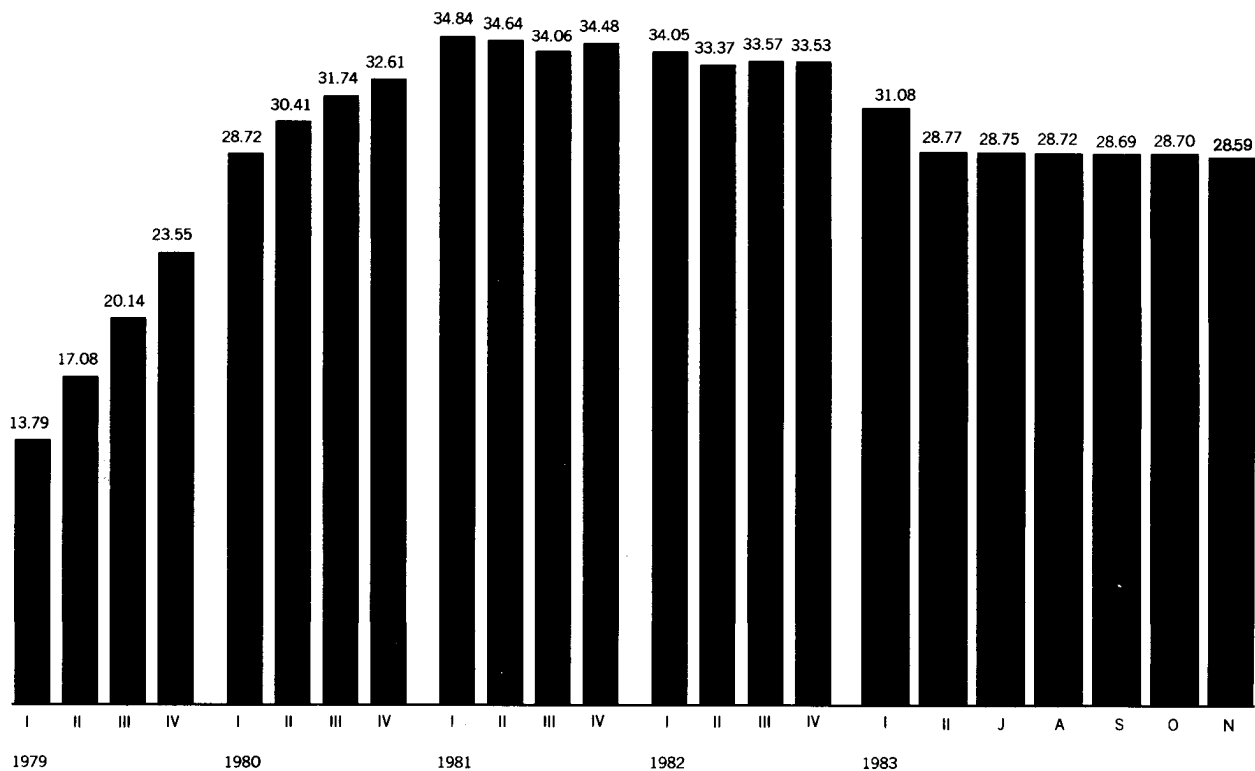
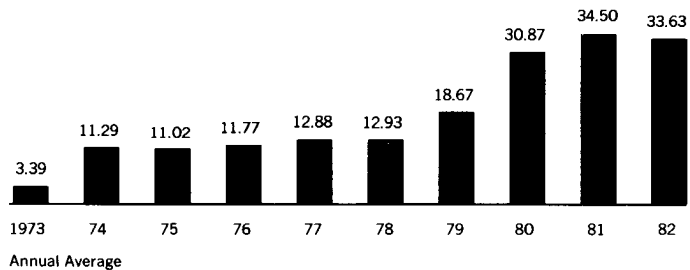
^a F.o.b. prices set by the government for direct sales and, in most cases, for the producing company buy-back oil.

^b Weighted by the volume of production.

^c Beginning in 1981 the price of Kirkuk (Mediterranean) is used in calculating the OPEC average official sales price.

OPEC: Average Crude Oil Official Sales Price

US \$ per barrel



Pre-1974 prices are derived from posted and are not official sales prices.

Unclassified

301566 1-83