

EAA - CHRONO

4 October 1982

MEMORANDUM FOR: President, Employee Activity Association

FROM:

[Redacted]

Assistant to the Executive Officer

SUBJECT:

EAA Bookkeeper's Office

1. The EAA Store is going to utilize part of [Redacted] office as a storage area for inventory. In order to make the room look nice, we have explored partitioning it. The cost of two acoustical partitions provided by the Agency would be approximately \$235.00 each for a total cost of \$470.00. The cost of two folding screens from Sears, as recommended by [Redacted] OL/LSD, and accepted by the EAA Store Manager and Bookkeeper, would be in the range of \$100.00 each.

2. It is requested that EAA be authorized to spend up to \$250.00 for the purchase of room dividers for the EAA Bookkeeper's Office.

APPROVED:

[Redacted Signature]

\_\_\_\_\_  
President, Employee Activity Association

\_\_\_\_\_  
Date

TRANSMITTAL SLIP

DATE 9/20/82

TO: [Redacted]

ROOM 5E584 Ag

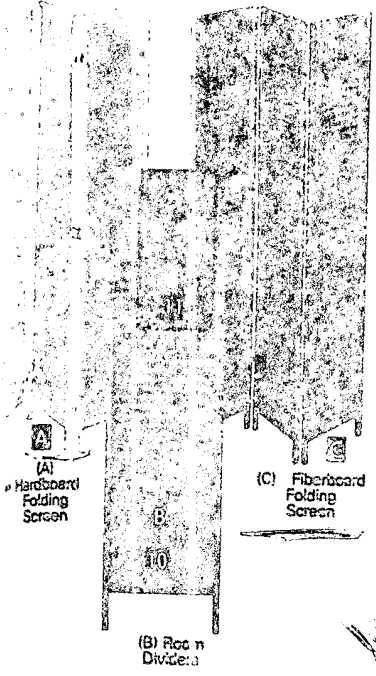
REMARKS:

Screen for GF 44  
Suggest that it be  
ordered from Sears  
and paid for with  
petty cash 5'W  
5'H by 235.00

EXPOSE  
COMB  
LOCK W  
AS PSE  
OPR

FROM [Redacted]

ROOM NO. BUILDING EXTENSION



**(A) Hardboard Folding Screen**  
**CONSTRUCTION:** Hardboard panels with preassembled hard wood frame... ready for finish with paint or paper to match your decor (not included). Brass-plated metal hinges allow panels to fold forward and back. 3 hinges are used between each panel for stability.  
**SIZES, ORDERING INFORMATION:** Each panel measures 71½ inches high, 17 inches wide. Also listed. Finishing instructions included. See "N" suffix note, page 532.

Part No.	Total Width inches	Catalog Number	Wt. lbs.	Price
3	51	24K8103N	29	\$40.99
4	68	24K8102N	36	53.99
5	85	24K8101N	44	74.99
6	102	24K8100N	54	99.99

**(B) Room Dividers**  
**CONSTRUCTION:** Bold geometric pattern polystyrene with hardwood frames in walnut woodgrain color finish. Spring-loaded tension poles with arrival clips that adjust to ceiling heights 7 feet 10 inches to 8 feet 8 inches.  
**COLORS:** 10-archer 11-gold  
**SIZES, ORDERING INFORMATION:** Single panel, assembled except spring detached; double panel unassembled. See "N" suffix note, page 532. State color number from above listing.

Part No.	Total Width inches	Catalog Number	Wt. lbs.	Price
1	26	24K8063N	14	9.99
2	52	24K8062N	22	19.99

**(C) Fiberboard Folding Screen**  
**CONSTRUCTION:** Corrugated paper fiberboard (see description at far right) panels are of seamless 3-ply construction with a tough inner core. Wood frame. Paper covering has walnut look with hatched design on one side, plain walnut on the other. Metal hinges.  
**SIZES, ORDERING INFORMATION:** Each panel is 72 inches high, 16½ inches wide. Assembled. See "N" suffix note, page 532.

Part No.	Total Width inches	Catalog Number	Wt. lbs. oz.	Price
1	30½	24K8120N	11	8.99
2	46	24K8121N	17	12.99
3	62½	24K8122N	24	18.99

**Wardrobes . . . a sturdy way to expand space**

**(D) Walnut-look vinyl-covered hardboard with extra-strong "V"-groove construction to eliminate side supports**

For rooms without closets or just for extra storage room, this durable hardboard wardrobe presents you with the additional space you need. Attractively designed and covered with rich walnut-look vinyl, it blends well with both traditional and contemporary furnishings.

**CONSTRUCTION:** Rigid hardboard (pressed wood) construction resists sagging, bending, or breaking. The good-looking walnut-look vinyl covering is also rugged enough to resist scuffs and it wipes clean with a damp cloth. Strong "V"-groove construction eliminates frame and side seam supports. A particle board top shelf and metal hanger bar extend across the length of the top of the wardrobe. Full-length double doors slide on a double-track for easy accessibility.

**SIZES AND ORDERING INFORMATION:** 72 inches high, 21½ inches deep. Shipped unassembled. Instructions, nuts and bolts are included.

Width, inches	Catalog Number	Shipping weight	Price
46½	24 K 8128N	109 pounds	\$149.99
58½	24 K 8130N	129 pounds	169.99
70½	24 K 81821N	158 pounds	199.99

**(E) Walnut-look fiberboard with steel side supports**

**CONSTRUCTION:** Walnut-look corrugated paper fiberboard body (see description at right). Steel molding on door assembly for durability. Full-length vertical steel supports on inside hold hanging rod, add support, and help prevent sagging, bending. Full-length doors slide on grooved metal track. 2-door wardrobes have a double-track that allows the doors to slide behind each other for easy accessibility. 20-inch deep full top shelf. Wood hanger bar.

**SIZES AND ORDERING INFORMATION:** 66 inches high, 21 inches deep. Shipped unassembled. Instructions, nuts and bolts included. See "N" suffix note, page 532.

Width, inches	Number of Doors	Catalog Number	Shipping weight	Price
36	1	24 K 8182N	23 lbs.	\$44.99
48	2	24 K 81815N	29 lbs.	58.99
60	2	24 K 81813N	34 lbs.	69.99
72	2	24 K 81817N	38 lbs.	89.99

**(F) Walnut-look fiberboard with across-the-top metal molding**

**CONSTRUCTION:** Walnut-look corrugated paper fiberboard (see description at right). Metal framed ¾-length sliding doors. Hardwood hanger rod supported by across-the-top metal molding.

**SIZES AND ORDERING INFORMATION:** 60 inches high, 21 inches deep. Shipped unassembled. Instructions, nuts and bolts included. See "N" suffix note, page 532.

Width, inches	Number of Doors	Catalog Number	Shpg. wt.		Price
			lbs.	oz.	
30	1	24 K 8014N	14	4	\$24.99
36	1	24 K 81802N	16	...	29.99
48	2	24 K 81803N	20	...	34.99
60	2	24 K 81803N	25	...	39.99
72	2	24 K 81803N	28	...	49.99

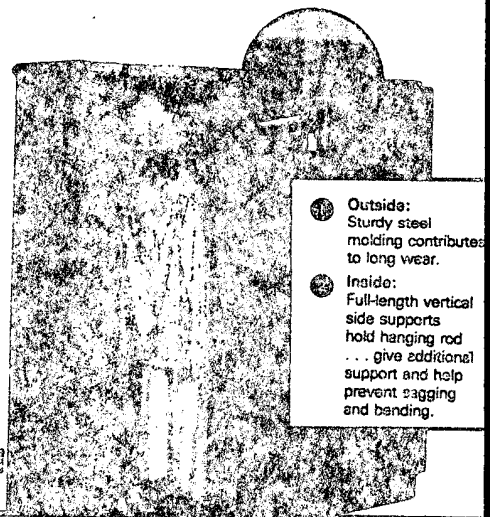
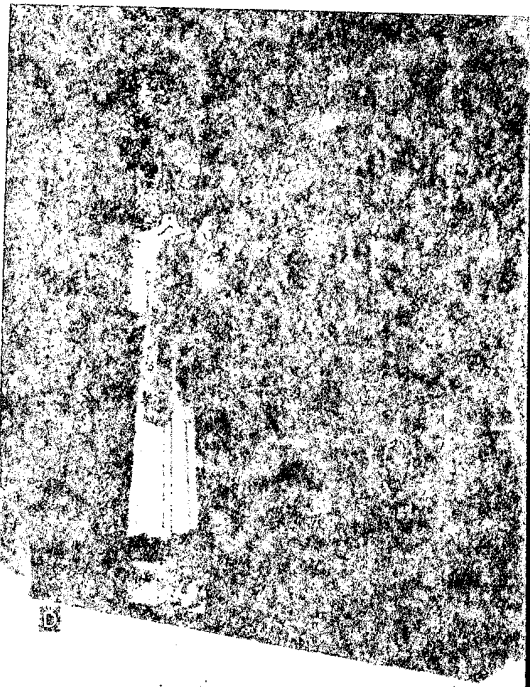
**(G) Our Lowest Priced Fiberboard Storage Wardrobe doubles as moving box**

For use in dorms, vacation homes, campers, or use to store old or seasonal clothes.

**CONSTR:** Walnut-look corrugated paper fiberboard (see description, right). Wood hanger bar.

**SIZES AND ORDERING INFORMATION:** 24 inches wide, 52 inches high, 21 inches deep. Shipped unassembled. See "N" suffix note, page 532.  
 24 K 81801N—Shpg. wt. 9 lbs. 8 oz. . . . . \$11.99

**MADE-TO-MEASURE WINDOW FASHIONS SPECIALS . . .**  
 a special catalog with a great selection of window coverings that are made to the exact measurements you desire. To get your FREE copy . . . see page 528.



**Outside:** Sturdy steel molding contributes to long wear.  
**Inside:** Full-length vertical side supports hold hanging rod . . . give additional support and help prevent sagging and bending.

**Corrugated Paper Fiberboard:** heavy-gauge paper (not wood or hardboard) tested for up to 200 lbs. per sq. in. bursting strength. 1-piece seamless 3-ply bonded construction with a tough inner core, yet it's less than ¼-in. thick.

