

~~SECRET~~

Security Information

THE BIOGRAPHIC REGISTER

CENTRAL INTELLIGENCE AGENCY

Office of Collection and Dissemination

58/98/R04/
OCD Biographies
EXTRA

~~SECRET~~

~~SECRET~~

~~Security Information~~

THE BIOGRAPHIC REGISTER

CENTRAL INTELLIGENCE AGENCY

Office of Collection and Dissemination

~~SECRET~~

INTRODUCTION

The Biographic Register/CD is an intelligence service unit established to provide to authorized recipients in the intelligence community biographic information on all foreign scientific, technical, industrial, and economic personalities and the organizations with which they are associated.

Biographic information has long been recognized as one of the major ingredients in intelligence production. As such, it is an integral part of the function of each of the basic components which form the framework of the intelligence community; e.g., the Division of Biographic Information in the Department of State for political biographic intelligence; the research and production branches of the Defense Department, for military biographic intelligence; the World Trade Intelligence Section of the Department of Commerce, for commercial biographic intelligence, etc. The fact that the biographic aspect must be included directly or indirectly in most assessments of the capabilities, vulnerabilities, and intentions of foreign powers is the key to its importance. While it is easy to appreciate in general the value of the biographic program, its practical applications are not always so fully realized. Some of the more outstanding of these are:

- a. The identification of persons who are friendly or inimical to the interests of the United States, leading to the preparation of "white" or "black" lists to be used as guides in the application of economic sanctions, and in the conduct of intelligence operations;
- b. Preparation of comprehensive reports and studies on important individuals to be used by researchers in the interpretation of trends and events, in the prediction of probable courses of action, and in the conduct of official negotiations;
- c. Segregation of persons according to knowledge and capabilities for assessing the scientific and economic potentialities of countries and areas, as well as the rate of progress and significance of special efforts; e.g., the development of weapons;
- d. Collection of personal data to be used in the various aspects of psychological warfare.

These uses are not theoretical, as has been proven repeatedly both in historical and current events. Throughout World War II, there was a continuous need for information concerning the location and activities of German atomic scientists; the whereabouts of important military, political, and economic figures; the leadership and size of resistance groups; the identity of friendly persons in hostile areas who could be useful in the post-war period, etc. Similar needs exist today for information on German and Soviet scientists, on economic leaders, as well as on key individuals in Soviet-controlled areas for psychological warfare and other unconventional purposes.

SECRET

BIOGRAPHIC REGISTER
Office of Collection and Dissemination

MISSION

To provide to authorized recipients in the intelligence community biographic information on all foreign scientific, technical, industrial, and economic personalities and the organizations with which they are associated.

To facilitate the accomplishment of its mission, the Register has been given certain prerogatives and has been staffed with specialized personnel and equipment. It has, for instance, authority to deal directly with biographic offices of the various official departments and agencies for the exchange of biographic information and materials. And for the recording, indexing, and filing of all types of biographic data, it is supplied with an IBM machine unit and other modern machine aids.

STAFF

Every effort has been made to acquire and consistently maintain an analytical staff of the highest academic and professional calibre. The intelligence officers presently on duty hold a combined total of degrees, and of that number have received the Master's degree and 3 the Ph.D. The accumulated intelligence experience of the analytical personnel represents a total of years of service, i.e., years with CIA and of previous service with such intelligence organizations as OSS, MI, CIC, G-2, ONI, and NSA. The degree of linguistic proficiency among the staff is indicated by the following list of languages which individual analysts are able to use in connection with their research problems: Chinese, Danish, French, German, Greek, Hungarian, Italian, Japanese, Korean, Norwegian, Polish, Portuguese, Romanian, Russian, Serbo-Croatian, Spanish, Swedish, and Turkish. The intelligence background of the staff is further enhanced by its record of foreign residence, amounting to a total of years in the Far East, years in Europe, and years in the Near and Middle East.

25X1A
25X1A

25X1A
25X1A

25X1A
25X1A

25X1A

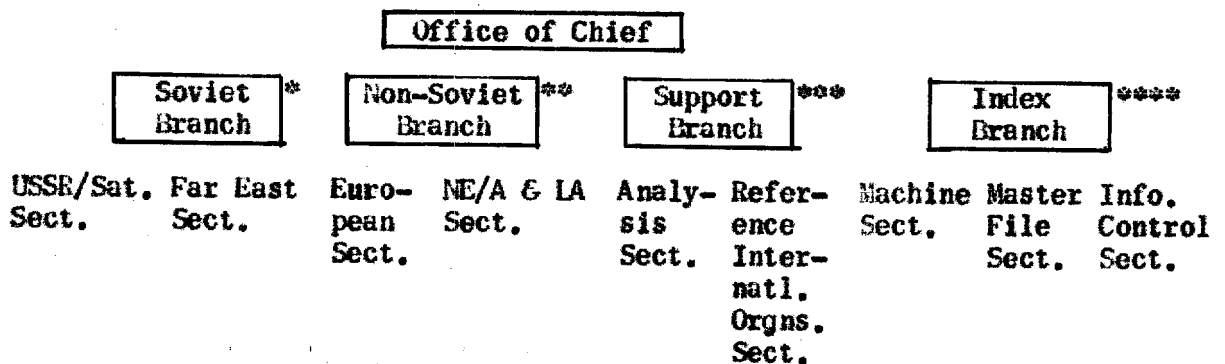
25X1A

25X1A

SECRET

ORGANIZATION

Organized on an area basis to conform to the specialized aspects of its mission and to meet practical considerations involved in the processing of intelligence material in great bulk, it consists of a headquarters - the Office of the Chief; three analytical components - the Soviet Branch, the Non-Soviet Branch, and the Support Branch; and a service component - the Index Branch.



* A Soviet Branch, which is responsible for biographic and organizational intelligence collection, compilation, and production on the USSR and those areas which are either under Soviet control or politically or linguistically aligned with the Soviet orbit.

** A Non-Soviet Branch, which is responsible for biographic and organizational intelligence collection, compilation, and production on the areas oriented towards the West or linguistically aligned with those areas.

*** A Support Branch, which is responsible for the classification by category of biographic and organizational data as well as for coordination and administration of those support functions which can best be handled centrally (i.e., publications, reference facilities, international organizations, etc.)

**** An Index Branch, which is responsible for (1) maintenance of IBM machine records for category and multiple category selection and tabulation, (2) maintenance of dossier files for the area desks, (3) control and dissemination of intelligence and other materials routed to the Register, and (4) time and attendance records, supplies, reproduction, etc.

SECRET

SERVICES

For those categories of personalities for which it has responsibility*, the Register:

- a. Provides direct service to requesters of biographic information by experienced area analysts;
- b. Compiles written biographic reports on personalities and organizations;
- c. Produces machine listings of individuals by category or multiple category;
- d. Prepares, by intellofax reproduction, copies of "Who's Who" information cards;
- e. Publishes biographic research aids;
- f. Provides support to editorial boards for official forms and correct spelling of names, organizations, and locations;
- g. Briefs intelligence officials of the IAC in special or general biographic requirements.

* The Register previously processed data and compiled reports on political, social and cultural personalities. As a result of a staff study by OIC which revealed a high degree of duplication in materials processed by BI and State/BI, it was considered expedient to utilize the facilities of State/BI to service the needs of CIA for personality data in such categories. An agreement was signed whereby State/BI agreed to provide complete biographic service to CIA in return for budgetary support of [] positions in State/BI, or approximately [] yearly. Implementation of this agreement began in January 1953, and, except for the Far Eastern area which is scheduled for transfer 1 July 1953, State/BI has fully assumed the biographic servicing responsibility as agreed.

25X1A

25X1A

SECRET

SECRET

FILES

The Register's files consist primarily of (1) dossiers, which contain the total accumulation of biographic data on individuals concerning whom there is extensive reporting; (2) McBee cards, containing brief biographic extracts on individuals concerning whom there is limited information; and (3) IBM machine-listed indexes of names to documents, used in instances where information is considered to be of limited or inconclusive intelligence interest.

In order to make possible the machine selection of specific items of biographic data in single or multiple categories, extensive IBM machine records are maintained in support of all the above-mentioned files. Also, for the purpose of furnishing biographic information of a "Who's Who" nature in single or multiple categories of individuals, there is a Who's Who card file in clear text representing all dossier and McBee cases.

In addition, the Register's holdings include numerous individual card files obtained from overt sources, originals or copies of captured biographic records from various overseas areas, and a reference shelf containing an appreciable collection of biographic encyclopedias, "Who's Who" - type reference volumes, foreign language dictionaries, gazetteers, handbooks, university catalogues, etc. At present, ER is engaged in compiling a central bibliographic reference file covering Soviet and Satellite scientific and technical literature.

25X1B

PUBLICATIONS



* Revised edition due December 1953

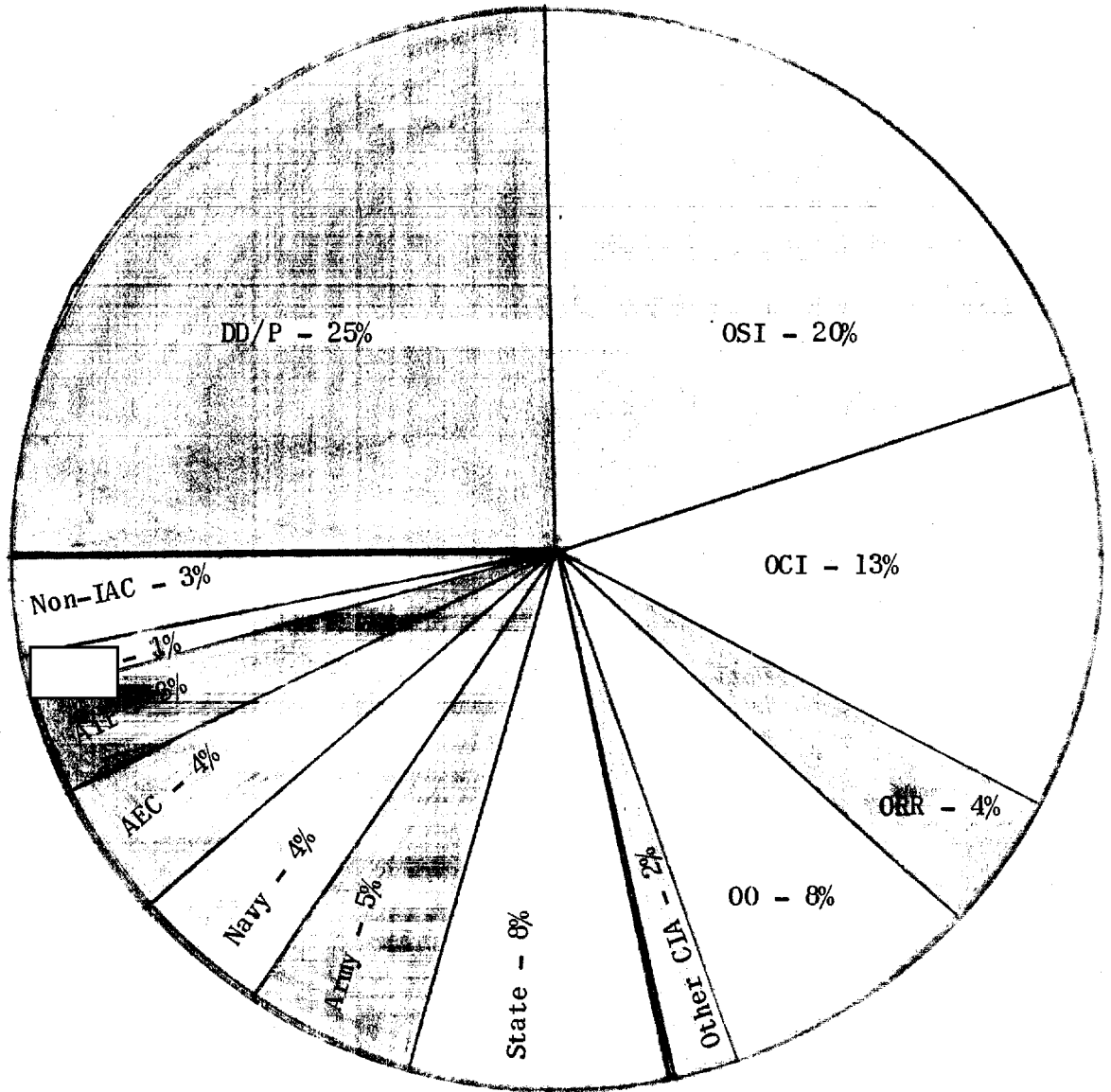
** Revision, to include organizations listed in the Directory, due December 1953

*** Publication date: September 1953

SECRET

BR REQUESTERS

Breakdown of requests by offices, 1952



25X1A

ER SERVICE BY AMOUNT AND TYPE - 1952

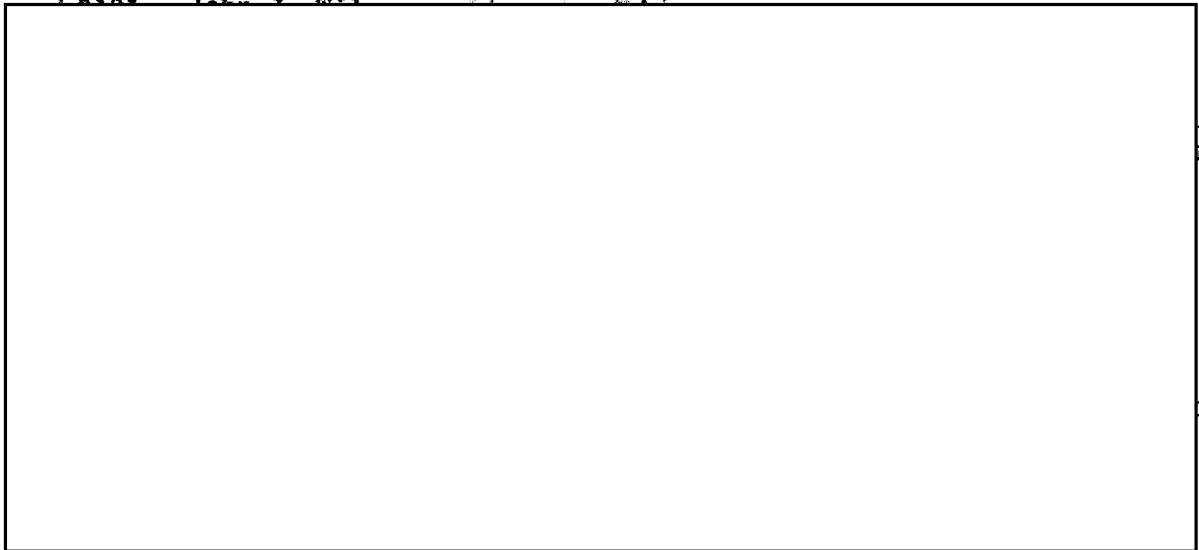
	Written Reports	Intellofax of Who's Who Cards	Inspection of Dossiers	Machine Listings
DD/P area	5,371	15,804	7,789	388,343
OSI	1,638	34,217	13,291	65,053
OCI	905	15,412	3,418	21,467
ORR	255	2,991	1,136	35,813
OO	1,503	5,870	2,056	76,510
Other CIA	237	156	3,349	177,110
State	196	697	654	913
Army	43	3,838	428	500
Navy	39	1,275	321	300
AEC	30		242	4
Air	231	39,069	5,895	111,076
	92		2	
Non-IAC	36		23	
	<u>10,658</u>	<u>119,329</u>	<u>38,604</u>	<u>877,089</u>

25X1A

SECRET

BIOGRAPHIC SKETCHES

25X1A



is
r

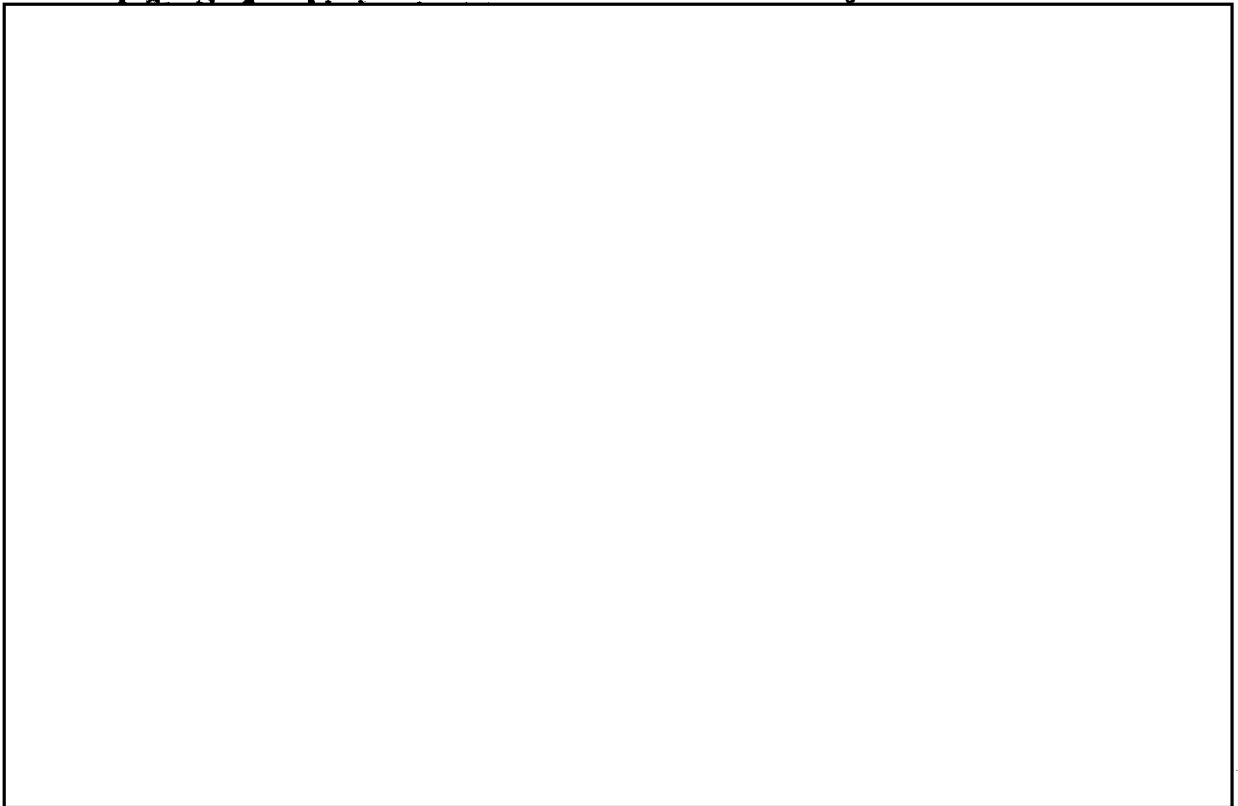
Chief, Soviet Branch

25X1A



Deputy Chief, BR

25X1A



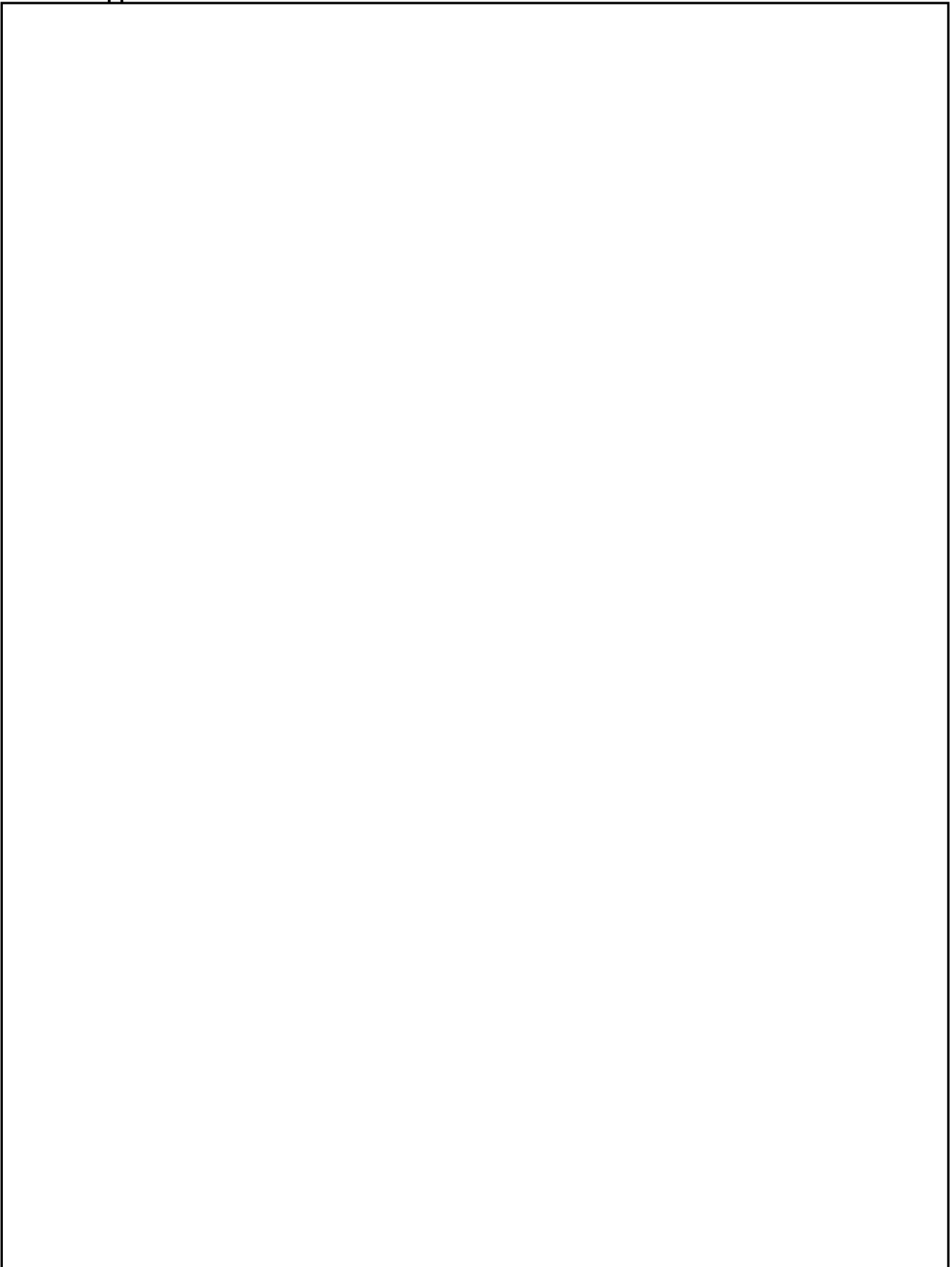
SECRET

25X1A



25X1A9a

Approved For Release 2002/06/18 : CIA-RDP84-00951R000400010060-3



SECRET

Approved For Release 2002/06/18 : CIA-RDP84-00951R000400010060-3

SECRET

SECRET