

*SECRET*

25X1A

CHANGE 1

ORGANIZATION  
1 October 1956

REGULATION

OFFICE OF CURRENT INTELLIGENCE

25X1A

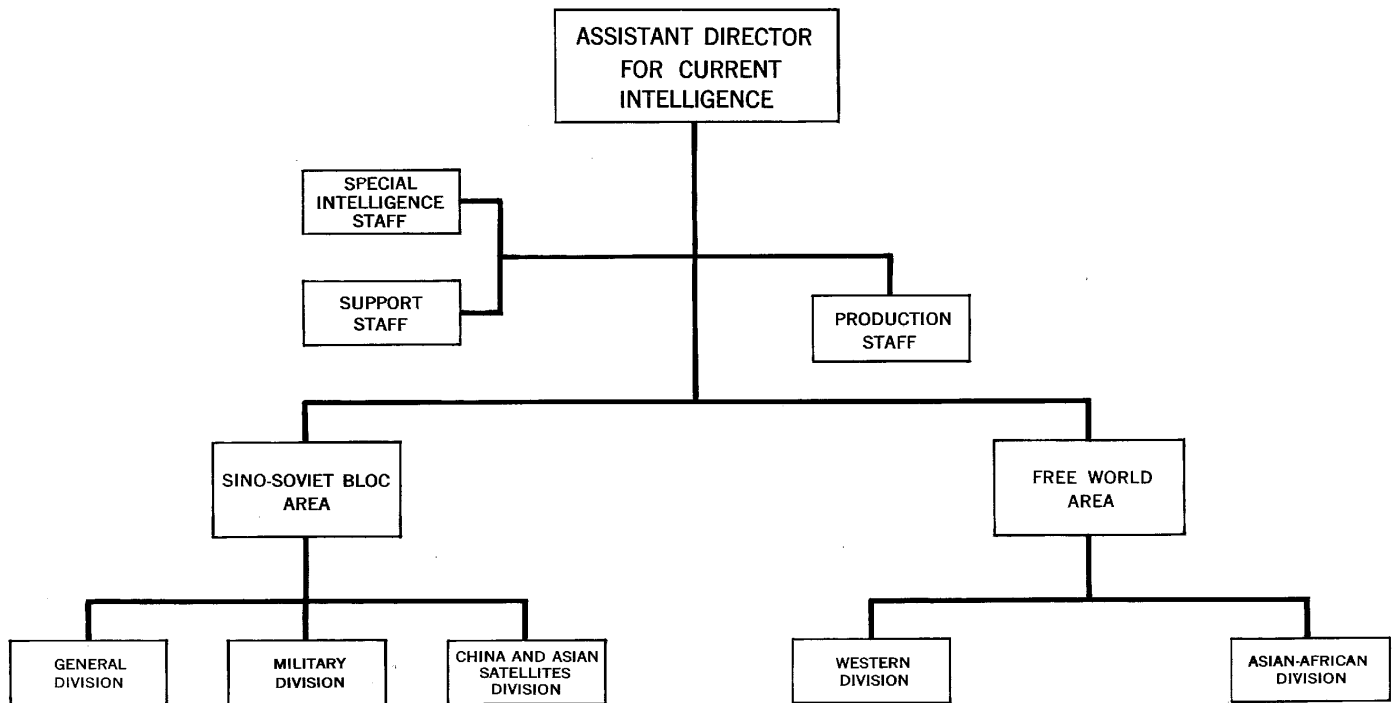


Figure 5

13112 10-56

HS/HC-147

*SECRET*

25X1A  
REGISTRATION

ORGANIZATION  
9 December 1955

## OFFICE OF NATIONAL ESTIMATES

### 8. MISSION

The Assistant Director for National Estimates is charged with the production of national intelligence estimates.

### 9. FUNCTIONS

The Assistant Director for National Estimates shall:

- a. Direct the production of national intelligence estimates. This includes the setting of priorities and the assignment of production responsibilities among the components of the Central Intelligence Agency, and among the intelligence agencies of the Federal Government.
- b. Prepare national intelligence estimates for issuance by the Director of Central Intelligence.
- c. Sit as Chairman of the Board of National Estimates.
- d. Provide the Executive Secretariat of the Intelligence Advisory Committee.
- e. Provide CIA representation and intelligence support at the Staff Assistants level of the National Security Council Staff.
- f. [REDACTED]
- g. Give appropriate guidance to the intelligence research agencies.
- h. Give appropriate guidance to the intelligence collection agencies.

25X6

### 10. ORGANIZATION

See organization chart, figure 4.