

~~CONFIDENTIAL~~

Approved For Release 1999/09/24 : CIA-RDP83-00423R002000100003-5

PRESENTATION FORM FOR GRAPHIC MATERIAL

DATE 3 June 1955

(Submit to HQ-00/C in triplicate with process sheet attached)

DIST: ORIG-GRAPHICS; DUPL-CASE FILE; TRIPL-SOURCE FILE; QUAD-FO RECORD GIFT LOAN

AREA West Bengal Province of India/Finnish Lapland

SUBJECT Tibetan Caravans/Landscape Scene/Transportation


NUMBER OF ITEMS AND CATEGORY (Still photographs, negatives, or slides)

DATE OF EXPOSURE April and May 1955

CHECK CLASSIFICATION OF PHOTOGRAPHS WHEN SEPARATED FROM THIS FORM. (The classification need not be the same.)

U. S. OFFICIALS ONLY CIA OFFICIALS ONLY SECRET
 CONFIDENTIAL RESTRICTED UNCLASSIFIED

25X1X6

BRIEF SOURCE DESCRIPTION


IS SOURCE APT TO MAKE ADDITIONAL PHOTOGRAPHIC MATERIAL AVAILABLE? Yes No
MAY SOURCE'S NAME BE REVEALED TO GRAPHICS REGISTER, OCD, IF REQUIRED? Yes No


DESCRIPTION OF MATERIAL

Picture No.	Description
1	Tibetan caravan coming into Kalimpong loaded with yak wool. Typical Tibetan on left.
2	Tibetan caravan leaving Kalimpong loaded with covered boxes. Destination Lhasa, Tibet.
3	Tibetan caravan leaving Kalimpong, India, loaded with covered boxes. Destination Lhasa, Tibet.
4	View of Kalimpong, India.
5	Sign in front of Chinese Communist Trade Mission. Lettering from top to bottom in Chinese, Tibetan, and Hindu. Kalimpong, India.
6	Mudda Lake on outskirts of Inari. Beginning of the Tundra in background.
7	Lapp mode of travel.
8	Typical Lapp in Finnish dress near Rittula, Finland.

CIA 17344-17348, 181984-181986

25X A2g

FOR HEADQUARTERS USE ONLY

OO-A NO. 	CASE NO. _____	DATE FORWARDED TO GR BY GMP 6 June 55
GR CONTROL NO. _____	RETURN DEADLINE (IF LOAN)	

NITRATE FILM EXPLOSIVE-SHIP BY EXPRESS UNDER SPECIAL CARRIER REGULATIONS

FORM NO. 57-27 FEB 1953 PREVIOUS EDITIONS NOT TO BE USED.

(47)

~~CONFIDENTIAL~~

Approved For Release 1999/09/24 : CIA-RDP83-00423R002000100003-5

ROUTING AND CONTROL RECORD

DO NOT DETACH FROM 'ON LOAN' DOCUMENTS

6 June 1955

DATE

TO: Graphics Register

ATTN:

BUILDING

ROOM NO.

TITLE

8 photos
Tibetan Caravans/Landscape Scene/Transportation
(West Bengal Pro ince of India/
Finnish Lapland)



REMARKS

RETAIN

ON LOAN

DOCUMENT(S)
FOR RETENSION
BY ADDRESSEE

DOCUMENT(S) MUST BE RETURNED TO
CONTACT DIVISION/00
BY (DEADLINE)

25X1A9a

FROM:

CONTACT DIVISION/00

BRANCH
GMP STAFF

BUILDING

Quarters Eye

ROOM NO.

1808

INSTRON

2576

SECRET

RESTRICTED

FORM NO. 67-29
DEC 1951

25X1A2g

FINLAND OULU INARI (NR) 68 54 N 27 10 E

LAPP REINDEER SLED AT RIUTULA SIX MILES NORTHWEST OF INARI. MAY 1955.

SIX MILES NORTHWEST OF INARI. MAY 1955.

OFFICIAL USE ONLY

CIA 181985

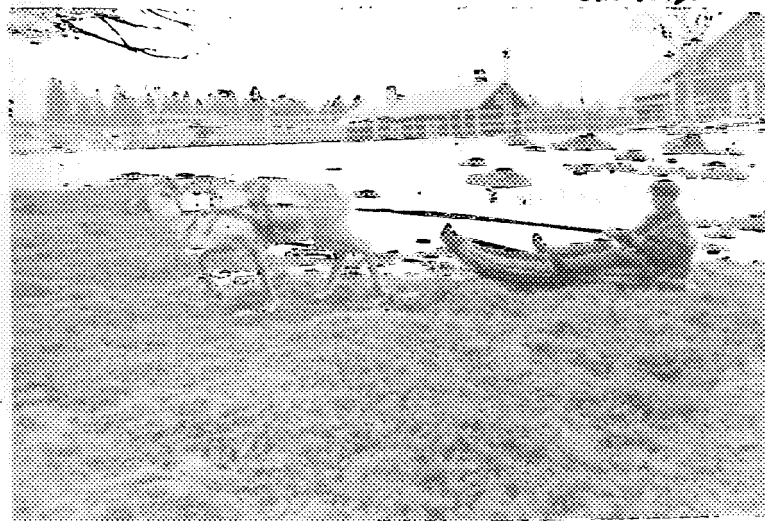


FINLAND OULU INARI (NR) 68 54 N 27 10 E

LAPP REINDEER SLED AT RIUTULA SIX MILES NORTHWEST OF INARI. MAY 1955.

OFFICIAL USE ONLY

CIA 181986



FINLAND OULU INARI 68 54 N 27 10 E

MUDDA LAKE. TUNDRA IN BACKGROUND. MAY 1955.

OFFICIAL USE ONLY

CIA 181984



⑧ TYPICAL LAPP IN FINNISH DRESS
NEAR RITTULA, FINLAND
22 MAY 1955

⑨ LAPP MODE OF TRAVEL.
22 MAY 1955

⑥ MUDDA LAKE ON OUTSKIRTS OF
INARI. BEGINNING OF THE TUNDRA
IN BACKGROUND.

FINLAND

22 MAY 1955