

25X1A8a

REGISTRATION FORM FOR GRAPHIC MATERIAL

DATE

12 April 1955

1G-GRAPHICS; DUPL-CASE FILE; TRIPL-SOURCE FILE; QUAD-FO RECORD

GIFT

LOAN

**Northern Norway, Northern Sweden, and Finland**

SUBJECT

**Various**

NUMBER OF ITEMS AND CATEGORY (Still photographs, negatives, or slides)

25X1X6

496 Kodachromes

DATE OF EXPOSURE



CHECK CLASSIFICATION OF PHOTOGRAPHS WHEN SEPARATED FROM THIS FORM. (The classification need not be the same.)

U. S. OFFICIALS ONLY

CIA OFFICIALS ONLY

SECRET

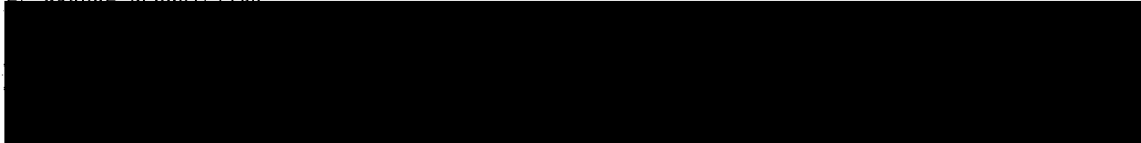
CONFIDENTIAL

RESTRICTED

UNCLASSIFIED

25X1X6

BRIEF SOURCE DESCRIPTION



IS SOURCE APT TO MAKE ADDITIONAL PHOTOGRAPHIC MATERIAL AVAILABLE?  Yes  No

MAY SOURCE'S NAME BE REVEALED TO GRAPHICS REGISTER, OCD, IF REQUIRED?  Yes  No

DESCRIPTION OF MATERIAL

**See attached list.**

**We appreciate that the annotations are very brief and if additional and more specific information on any particular kodachrome is desired, we will obtain it from source after this collection has been returned to him.**

25X1A2g

FOR HEADQUARTERS USE ONLY

CASE NO.

DATE FORWARDED TO GR BY GMP

GR CONTROL NO.

RETURN DEADLINE (IF LOAN)

NITRATE FILM EXPLOSIVE-SHIP BY EXPRESS UNDER SPECIAL CARRIER REGULATIONS

H 1129-

Approved For Release 1999/09/24 : CIA-RDP83-00423R001800500001-6

PRESENTATION FORM FOR GRAPHIC MATERIAL

25X1A8a

12 April 1955

(Submit to [redacted] triplicate with process sheet attached)

DIST: ORIG-GRAPHICS; DUPL-CASE FILE; TRIPL-SOURCE FILE; QUAD-FO RECORD

GIFT

LOAN

AREA Northern Norway, Northern Sweden, and Finland

SUBJECT Various

NUMBER OF ITEMS AND CATEGORY (Still photographs, negatives, or slides) 496 Kodachromes

DATE OF EXPOSURE [redacted] 25X1X6

CHECK CLASSIFICATION OF PHOTOGRAPHS WHEN SEPARATED FROM THIS FORM. (The classification need not be the same.)

U. S. OFFICIALS ONLY

CIA OFFICIALS ONLY

SECRET

CONFIDENTIAL

RESTRICTED

UNCLASSIFIED

25X1X6

B [redacted]

IS SOURCE APT TO MAKE ADDITIONAL PHOTOGRAPHIC MATERIAL AVAILABLE?  Yes  No

MAY SOURCE'S NAME BE REVEALED TO GRAPHICS REGISTER, OCD, IF REQUIRED?  Yes  No

DESCRIPTION OF MATERIAL

See attached list.

We appreciate that the annotations are very brief and if additional and more specific information on any particular kodachrome is desired, we will obtain it from source after this collection has been returned to him.

*You may also find the numbers are confused - we will also correct this when photos are returned.*

*Acc. CIA 183261-183290 (55)  
Comp. 25 Nov. 55*

25X1A2g

FOR HEADQUARTERS USE ONLY

[redacted]

DATE FORWARDED TO GR BY GMP

*14 April 55*

RETURN DEADLINE (IF LOAN)

*13 May 55*

GR CONTROL NO.

NITRATE FILM EXPLOSIVE-SHIP BY EXPRESS UNDER SPECIAL CARRIER REGULATIONS

Approved For Release 1999/09/24 : CIA-RDP83-00423R001800500001-6

Northern Sweden

- S-1 Lapp settlement out on vidda some miles northwest of Karesuando. ✓
- S-2 Reindeer herd at same settlement on vidda.
- S-3 Church in Karesuando.
- S-4 Reindeer herd at same settlement mentioned in S-1.
- S-5 Same settlement. ✓
- S-6 Same settlement, reindeer herd on vidda.
- S-7 Dwarf horses at Skansen. ✓
- S-8 Dwarf horses at Skansen.
- S-9 Area near Pajala. ✓
- + S-10 Kiruna. ✓
- S-11 Skansen. ✓
- S-12 Near dam at Haparanda. ✓ ? what is installation in fg?
- S-13 Area near Pajala. ✓
- S-14 Lapp village just north of Karesuando.
- S-15 Pajala. ✓
- S-16 Pajala. ✓
- S-17 Haparanda. ✓
- S-18 South of Pajala.
- S-19 Dam and lake at Haparanda. ✓
- S-20 Lapp girl at Jokkmokk.
- S-21 Finnish farms in winter, on Swedish side near Muonio. ✓
- S-22 Lapp girls interned in settlement mentioned in S-1.
- S-23 Haparanda. ✓
- S-24 Lapps and tent in settlement mentioned in S-1. Visit by traveling nurse.
- S-25 Lapp girl at Jokkmokk.
- S-26 Lapp girls at Jokkmokk.
- S-27 School for Jokkmokk. ✓

- 2 -

S-28 Vidda near Karesuando.

S-29 Old Finnish-Lappish couple in settlement mentioned in S-1.

S-30 Tents and settlement on vidda mentioned in S-1.

S-31 Same as S-1. ✓

S-32 Inside barn in settlement in S-1.

S-33 Same as S-1.

S-34 Same as S-1. ✓

S-35 Same as S-1.

Finland ?

- F-1 Kaunispaa above tree line looking east. ✓
- F-2 Lapp settlement near Vuotso.
- F-3 Baker woman in Rovaniemi. ✓
- F-4 Market in Rovaniemi. ✓
- F-5 Street in Rovaniemi. ✓
- F-6 Houses immediately to left of road in Ivalo. ✓
- F-7 Finnish church.
- F-8 Old bridge in Ivalo. ✓
- F-9 Bathhouse in Outakoski on Norwegian-Finnish border.
- F-10 Bathhouse in Sodankyla.
- F-11 Church in Rovaniemi. ✓
- F-12 New school in Rovaniemi. ✓
- F-13 On Kaunispaa. ✓
- F-14 Looking north on Tana River, Finland on left, Norway on right.
- F-15 Stop on Tana River in Finland at Polmak. ✓ *Norway*
- F-16 Vidda and arm of Finland extending northwest between Norway and Sweden. Typical vidda.
- F-17 Reconstruction in Ivalo. ✓
- F-18 Market day in Rovaniemi. ✓
- F-19 Street in Ivalo. ✓
- F-20 In Ivalo with lumbermen on strike. ✓
- F-21 Bridge in winter in Ivalo. ✓
- F-22 Typical vidda seen in arm of northwest Finland. ✓
- F-23 Looking north on Tana River.
- F-42 Helsinki
- F-43 Helsinki.
- F-44 Harbor at Helsinki.
- F-45 Looking north on vidda just north of Karesuando in northern Sweden.

- F-46 Tana River.
- F-47 Helsinki.
- F-48 Looking east toward Russian border in neighborhood of Niemela. ✓
- F-49 West Finnish farm showing windmill. ✓
- F-50 Going up Tana River between Norway and Finland. ✓
- F-51 Old fortress near Vaasa. ✓
- F-52 Reindeer herd in road near Muonio. ✓
- F-53 View near Salmijarvi ✓
- F-54 Church in Salmijarvi. ✓
- F-55 Destruction of German war northwest of Muonio.
- F-56 Reindeer herd near Palojoensuu. ✓
- F-57 Fortress at Savonlinna.
- F-58 Inside fortress at Savonlinna.
- F-59 West Finnish church. ✓ *Savonlinna*
- F-60 Fortress at Savonlinna. ✓
- F-61 Fortress at Savonlinna.
- F-62 West Finnish church showing poor man. ✓
- F-63 Fortress at Savonlinna.
- F-64) Same as F-63.
- F-65)
- F-66 Near Russian border at Juntusranta within one half mile of border. ✓
- F-67 (Out of place) Lapp coral at Uloy near Lyngenfjord, northern Norway. ✓
- F-68 Fortress near Vaasa. ✓
- F-69 Fortress at Savonlinna. ✓
- F-70 Finland near Muonio. ✓
- F-71 <sup>VIEW FROM</sup> Fortress at Savonlinna. ✓

- 3 -

- F-72 Within one half mile of Russian border at Juntusranta.
- F-73 Same as F-72.
- F-74 Savonlinna.
- F-75 North Finnish school at or in neighborhood of Kuuma.
- F-76 Birdhouse on farm in Anontekio (sp ?).
- F-77 Neighborhood of Rattosjarvi. ✓
- F-78 Road toward Kupescharvi (sp ?) along Finnish border. ✓
- F-79 Near Muonio. ✓
- F-80 Church at Kemijarvi. ✓ — *Kemijarvi?*
- F-81 Near Russian border at Kallunki. ✓
- F-82 Looking east toward Sala (sp ?).
- F-83 Farm on Takeyo (sp ?). ✓ — *Ontakeyo ? see 91-92*
- F-84 Outskirts of Salmijarvi. ✓
- F-85 Airport near Kemijarvi. ✓
- F-86 Airport near Kemijarvi.
- F-87 Airfield near Kemijarvi. ✓
- F-88 Destruction of German war on road between Muonio and Kilpisjarvi (sp ?) ✓
- F-89 Muonio. ✓
- F-90 Muonio. ✓
- F-91 In Ontakeyo (sp ?). ✓
- F-92 Grass or hay in Ontakeyo (sp ?). ✓
- 
- F-93 Going along Tana River between Norway and Finland.
- F-94 Finnish farm settlement, Lapp Finnish on Finnish side of Tana River. ✓
- ~~F-95~~
- F-96 *Ivalo* F-98 ? ✓
- F-97
- F-98 Old bridge at Ivalo. ✓ F-100 ?

- F-99 Clearing land in northern Finland south of Sodankyla. ✓
- F-100 Rovaniemi. ✓
- F-101 Reconstruction northern Finland.
- F-102 Outakoski. ✓
- F-103 (Out of place) vidda near at Beskinagi (sp ?) in Karasjok district of Norway.
- F104 Farm cleared land along Ouna River. ✓
- F-105 Arm of Finland north of Karesuando.
- F-106 Stopping for mail on Finnish side of Tana River. ✓
- F107 Finland on vidda north of Karesuando.
- F-108 Finnish house and farm settlement along Tana River. ✓



Norway

- N-1 Lyngenfjord looking north. ✓
- N-2 Horses on Kvaløy near Tromsø. ✓
- N-3 Kvaløy near Tromsø. ✓
- N-4 From Kvaløy looking toward Tromsø. ✓
- N-5 Looking from Tromsø toward Kvaløy.
- N-6 Looking from Kvaløy east toward Tromsø. The mountain in the background is Tromsøtind (sp ?). ✓
- N-7 Main street in Tromsø. ✓
- N-8 Bodø at night. Summer 1952. ✓
- N-9 From Bodø looking toward Lofotens.
- N-10 From Bodø looking toward Lofotens.
- N-11 Saltstrommen near Bodø. ✓
- N-12 Saltstrommen.
- N-13 Whale station near Tromsø. ✓
- N-14 Whale station at Tromsø.
- N-15 Road leading east into Vinge fjord southwest of Trondheim. ✓
- N-16 Saltstrommen. ✓
- N-17 Saltstrommen.
- N-18 Whale station at Tromsø. ✓
- N-19 Whale station near Tromsø. ✓
- N-20 Near Bodø.
- N-21 Whale station at Tromsø.
- N-22 Whale station near Tromsø.
- N-23 Whale station near Tromsø.
- N-24 Malselv district, October 1952.
- N-25 Lofoten.

- 2 -

- F-26 Islands in Lofoten, near Sval ✓ (?)
- N-27 Ancient church near Harstad. ✓
- N-28 Lofoten.
- N-29 Near Harstad.
- N-30 Malselv.
- N-31 Looking west from Kvaløy, near Tromsø. ✓
- N-32 New church near Neiden. ✓
- N-33 Altafjord. ✓
- N-34 Altafjord.
- N-35 Laksefjord. ✓
- N-36 Old woman near *(Two #36)* (?)
- ~~N-36~~ N-37 Same as N-36. - *not here*
- N-38 Church in Neiden. ✓
- N-39 Varangerfjord. ✓
- N-40 Neiden. ✓
- N-41 Between Vanvik (sp ?) and Larvug (sp ?) in north Norway near Varangerfjord. ✓
- N-42 Bøkfjord. ✓
- N-43 Between Vanvik and Larvug (sp ?). ✓
- N-44 Porsangerfjord. ✓
- ~~N-45~~ ✓
- N-46 Neiden. *o not here*
- N-47 Neiden. ✓
- N-48 Laksefjord.
- N-49 Komsa in Altafjord.
- N-50 Komsa in Altafjord. ✓
- N-51 Porsangerfjord. ✓

(31)

- N-52 Porsangerfjord. ✓
- N-53 Boats in harbor near Kvalsund, near Kvaløy on which Hammerfest is found. ✓
- N-54 Porsangerfjord. ✓
- N-55 Komsa in Altafjord. ✓
- N-56 Lapp settlement on vidda between Sursarvi and Yugarelva (sp ?) southwest of Karasjok.
- N-57 Mine at Kirkenes. ✓
- N-58 Along vidda in winter 1951. River is Jiesjokka.
- N-59 Animals out at Skibotn in Lyngenfjord in winter.
- N-60 Eider ducks in Lofoten.
- N-61 Small lake on vidda near Solovome.
- N-62 Porsangerfjord.
- N-63 Tanafjord. ✓
- N-64 Porsangerfjord.
- N-65 Tanafjord. ✓
- N-66 Altafjord.
- N-67 Altafjord.
- N-68 Between Ifjord on Laksefjord and west of Tana and Tanafjord. ✓
- N-69 Altafjord.
- N-70 Laksefjord. ✓
- N-71 Altafjord. ✓
- N-72 Looking toward Vesteraalen from mainland.
- N-73 Saltstrommen looking south from Kvaløy on which Hammerfest is found.
- N-74 Alterdet. ✓
- N-75 Banak. ✓
- N-76 Market day in Tromsø. ✓

- N-77 Pouring blood into stomach of reindeer slaughtered.
- N-78 Looking toward Hammerfest.
- N-79 Karasjok. ✓
- N-80 Vesteraalen. - *miljø* ✓
- N-81 Skaidi.
- N-82 Klinenongfjord (sp ?). ✓
- N-83 Harbor at Tromsø. ✓
- N-84 Karasjok. ✓
- N-85 Hammerfest. ✓
- N-86 Banak. Gun emplacement in foreground. Vestbotn (sp ?) in background. ✓
- N-87 Vadso showing radio towers. ✓
- N-88 Alta old well. ✓
- N-89 Vinge harbor in Vesteraalen on Langøy. ✓ - ?
- N-90 Market day in Tromsø. ✓
- N-91 **Cows**  
~~Cars~~ on mainland looking toward Tromsø and north northwest. ✓
- N-92 Tromsø. ✓
- N-93 Hammerfest. ✓
- N-94 Near Beskenjarg southwest of Karasjok.
- N-95 Skaidi during Lapp reindeer slaughter.
- N-96 Lapp trail along Yesyoka (sp ?) in winter. ✓
- N-97 Looking from Yesyoka (?) toward Karasjok coming over divide. ✓
- N-98 Lapp girls at Karasjok.
- N-99 Fish rack at Vadso.
- N-100 Alta. Church with old underground dwelling from days of war. ✓
- N-101 On route to Svolvær.

32

- N102 Vadso. ✓
- N-103 Lofoten during cod fishery. ✓
- N-104 Lofoten in cod fishery. ✓
- N-105 Skibotn farmers. ✓
- N-106 Reisaelva. ✓
- N-107 Route 50 at Arctic Circle. ✓
- N-108 Just east of Ifjord. ✓
- N-109 Svolvaer. ✓
- N-110 Kirkenes. ✓
- N-111 Narvik. ✓
- N-112 Skerrys northeast of Svolvaer. ✓
- N-113 Bokfjorden. ✓
- N-114 Skipagurra.
- N-115 Skaidi.
- N-116 Assebakte southwest of Karasjok.
- N-117 On vidda south of Goatteluobbal.
- N-118 Svolvaer. ✓
- N-119 Balsfjord. ✓
- N-120 Lofoten fisheries.
- N-121 Lofoten fisheries.
- N-122 Lofoten fisheries near Svolvaer. ✓
- N-123 Skipagurra. ✓
- N-124 Lofoten fisheries near Svolvaer.
- N-125 Lofoten.
- N-126 Bokfjorden. ✓

- N-127 Lofoten. ✓
  - N-128 Lapp.
  - N-129 Tromsø.
  - N-130 Suosjavrre between Kautokeino and Karasjok. ✓
  - N-131 On vidda between Kautokeino and Karasjok.
  - N-132 Near Mieron north of Kautokeino.
  - N-133 Skaidi. *Sennegrass drying on bushes.* ✓
  - N-134 Bringing slaughtered deer to camp at Solovome.
  - N-135 Lapp house along the Assejoka (sp ?). ✓
  - N-136 Inside iron smelting plant in Kirkenes. ✓
  - N-137 Along the Yesyoka (sp ?). ✓
  - N-138 Lapp soldiers on river at Karasjok. ✓
  - N-139 Fishing station in Lofoten.
  - N-140 Narvik. ✓
  - N-141 Lofoten.
  - N-142 Skaidi. Birch forest looking toward Reppafjord. ✓
  - N-143 Road along north side of Varangerfjord. ✓
  - N-144 Vigne and Langøy from mountain on hill Lilloy (sp ?). ✓
  - N-145 South Norway. ✓
  - N-146 North side of Varangerfjord. ✓
  - N-147 Boats near Svolvaer.
  - N-148 Svolvaer. ✓
  - N-149 Lapps in Karasjok.
  - N-150 Narvik. ✓
- 
- N-151 Vegetation near Skaidi.
  - N-152 Narvik. *Numbered N-142*

*what is Skaidi?*

11

- N-153 Lyngenfjord from Uloy looking south. ✓
- N-154 Mallafoos (sp ?) on Reisaelva. ✓
- N-155 Mallafoos (sp ?) on Reisaelva.
- N-156 South of Goatteluobbal on vidda.
- N-157 Suosjvrre. ✓
- N-158 Suosjvrre.
- N-159 Suosjvrre.
- N-160. Goatteluobbal. ✓
- N-161 Suosjvrre. ✓
- N-162 Vadso. ✓
- N-163 Adamsfoss (sp ?) and Laksefjord.
- N-164 Vadso.
- N-165 North of Route 50 near Skaidi.
- N-166 Skaidi.
- N-167 North of Route 50 near Skaidi.
- N-168 North of Route 50 near Skaidi.
- N-169 Skaidi. ✓
- N-170 Karasjok.
- N-171 Lofoten.
- N-172 Lofoten.
- N-173 Vesteraalen. ✓
- N-174 Lofoten fisheries.
- N-175 Lofoten fisheries near Svolvaer.
- N-176 Vesteraalen.
- N-177 Gratangen. ✓
- N-178 Vesteraalen. ✓
- N-179 Vesteraalen.

- N-180 Vigne on Langøy looking northwest.
- N-181 Solovome
- N-182 Solovome.
- N-183 Solovome.
- N-184 Solovome.
- N-185 Solovome.
- N-186 Solovome.
- N-187 Solovome.
- N-188 Solovome.
- N-189 Alta. ✓
- N-190 Solovome.
- N-191 Solovome.
- N-192 Solovome.
- N-193 Solovome.
- N-194 Solovome.
- N-195 Solovome. Johann Rishaug.
- N-196 Solovome.
- N-197 Solovome.
- N-198 Solovome.
- N-199 Solovome.
- N-200 Solovome.

---

- N-201 Suosjavrrre between Kautokeino and Karasjok.
- N-202 Goatteluobbal, southwest of Kautokeino.
- N-203 Karasjok.
- N-204 Karasjok.
- N-205 Karasjok showing Finnish horse. ✓

(28)



- duplication of numbers -*
- N-206 Varangerfjord.
  - N-207 Olderdalen. ✓
  - N-208 Varanger.
  - N-209 Forsanger. ✓
  - N-210 Neighborhood of Goddekvarre. ✓
  - N-211 Tana. ✓
  - N-212 Varanger. ✓
  - N-213 Lyngen looking from west in direction of Langnesbukt.
  - N-214 Varanger.
  - N-215 Varanger. ✓
  - N-216 Altafjord.
  - N-217 Uloy looking toward Lyngenfjord with Lyngen Mountains in background.
  - N-218 Laksefjord.
  - N-219 Uloy. ✓
  - N-220 Uloy looking northwest at Lyngenfjord with Lyngen Mountains in background. ✓
  - ~~N-221~~ (but marked 211) Mallefoss (sp ?) Reisaelva. ? ✓  
*12-211*
  - N-212 Uloy looking toward Lyngen.
  - N-213 Hamnes on Uloy. ✓
  - N-214 Hamnes on Uloy looking south. ✓
  - N-215 Uloy.
  - N-216 Sorkjosen. ✓
  - N-217 Uloy.
  - N-218 North shore of Reisa varre northwest of Kautokeino. ✓
  - N-219 Svolveer. ✓
  - N-220 Reisaelva.
  - N-221 Lyngenfjord with coast in neighborhood of Nordmannvik.

- N-222 Reisaelva. ✓
- N-223 Lyngen.
- N-224 Uloy. ✓
- N-225 Reisaelva. ✓
- N-226 Sorkjosen with church at Nordreisa. ✓
- N-227 Northwest of Sorkjosen.
- N-228 Southwest of Goatteluobbal.
- N-229 Skaidi.
- N-230 Reisaelva. ✓
- N-231 Sor-Lenangen.
- N-232 Tromsø.
- N-233 Ullsfjorden (sp ?).
- N-234 Looking at Tromsø from hill on mainland. ✓
- N-235 Church in main square at Tromsø. ✓
- N-236 Market in Tromsø.
- N-237 Tromsø.
- N-238 Market in Harstad. ✓
- N-239 Svolvær. ✓
- N-240 Svolvær. ✓
- N-241 Svolvær.
- N-242 Svolvær. ✓

---

- N-243 Karasjokka near Assebakte. ✓
- N-244 Fish rack at Vadso. ✓
- N-245 Narvik. ✓
- N-246 Kautokeino. ✓
- N-247 Near Karasjok. ✓
- N-248 Experimental farm in Tromsø. ✓

18

- 11 -

- N-249 Skaidi.
- N-250 Near Eidsnes in neighborhood of Altafjord. ✓
- N-251 Skaidi.
- N-252 Kirkenes. ✓
- N-253 Alta at Bossekop. ✓
- N-254 Skipagurra. ✓
- N-255 Tromsø. ✓
- N-256 Near Jergula. ✓
- N-257 Skaidi.
- N-258 Tromsø.
- N-259 Stokkmarknes.
- N-260 Reservoir at Hammerfest. ✓
- N-261 Vesteraalen. ✓
- N-262 Solovome.
- N-263 Hammerfest. ✓
- N-264 Stokkmarknes.
- N-265 Tromsø. ✓
- N-266 Tromsø looking west. ✓  
*1 missing*
- N-277 Mine at Kirkenes. ✓
- N-278 On Karasjokka to west of Karasjok.
- N-279 On vidda southeast of Beskenjarg.
- N-280 On river at Karasjok.
- N-281 Tromsø looking northwest. ✓
- N-282 Experimental farm on Tromsø looking west toward Kvaløy. ✓
- N-283 Hammerfest. ✓
- N-284 Vesteraalen.

(6)

- 12 -

- N-285 On Karasjokka near Assebakte.
- N-286 Karasjok. ✓
- N-287 Kvaenangenfjord. ✓
- N-288 Solovome.
- N-289 Solovome.
- N-290 Skaidi.
- N-291 Solovome.
- N-292
- N-293 Skaidi.
- N-294 Skaidi.
- N-295 Skaidi.
- N-296 Skaidi.
- N-297 Skaidi.
- N-298 Lake on vidda near Solovome. ✓
- N-299 Solovome.
- N-300 Solovome.

---

- N-301 Skaidi.
- N-302 Skaidi.
- N-303 Skaidi.
- N-304 Skaidi.
- N-305 Solovome.
- N-306 Solovome.
- N-307 Between Alta and Porsanger.
- N-308 On Karasjokka at Karasjok.
- N-309 South Norway.

- N-310 Karasjok.
- N-311 Karasjok.
- N-312 Karasjok.
- N-313 Karasjok.
- N-314 Mine at Kirkenes. ✓
- N-315 Karasjok. ~ TL ✓
- N-316 On vidda southeast of Assebakte..
- N-317 Vegetation near Ifjord.
- N-318 Trondheim. ✓
- N-319 Gratangen. ✓
- N-320 Adamsfoss (sp ?) on Laksefjord.
- N-321
- N-322 On vidda near Assebakte.
- N-323 Fishing station in Vesteraalen. ✓
- N-324 On vidda near Assebakte.
- N-325 Along Karasjok.
- N-326 Along Karasjokka.
- N-327 In school in Karasjok.
- N-328 Along Karasjok.
- N-329 Church in Karasjok.
- N-330 Trader in Karasjok. ✓

---

- N-331 Karasjok. ✓
- N-332 Solovome.
- N-333 Karasjok. ✓
- N-334 Karasjok. ✓

(6)

(6)

- 14 -

- N-335 Banak. ✓
- N-336 On vidda southeast of Beskenjarg. ~~WAZZ~~
- N-337 Same.
- N-338 On vidda southeast of Beskenjarg.
- N-339 Same. ✓
- N-340 Goatteluobbal.
- N-341 Beskenjarg.
- N-342 On vidda southeast of Beskenjarg. ✓
- N-343 Suosjvrre.
- N-344 Suosjvrre.
- N-345 Maid at Goatteluobbal.
- N-346 Between Mieron and Goatteluobbal.
- N-347 Between Goatteluobbal and (?).
- N-348 Karasjok.
- N-349 Solovome.
- N-350 Skibotn near Lyngen.
- N-351 On vidda near Assebakte looking toward Karasjok which is in the northeast.
- N-352 Solovome.
- N-353 Solovome.

~~SECRET~~

*Handwritten signature or scribble*

25X1A2g



*File*  
*HP*

NORWAY FINNMARK  
GUN EMPLACEMENT IN FOREGROUND.  
OFFICIAL USE ONLY

CIA 183273



NORWAY TROMS IFJORD (NR) 70 29 N 21 10 E  
NARROW ROAD THROUGH HILLS.  
OFFICIAL USE ONLY

CIA 183274



NORWAY NORDLAND NARVIK (NR) 68 25 N 17 22 E  
OFDT FJORD. OFFICIAL USE ONLY

CIA 183275



NORWAY FINNMARK VARANGERFJORD 69 50 N 30 10 E  
ROAD ALONG NORTH SIDE. OFFICIAL USE ONLY

CIA 183276





N-86

7-113

N-108

7-36

N-111

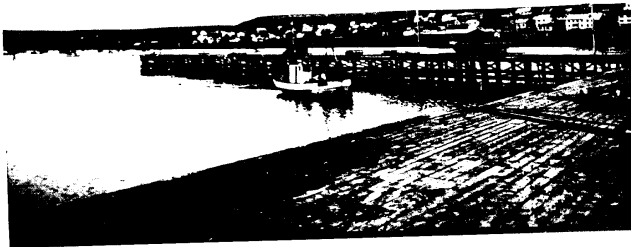
7-1

7-56

N-143



NORWAY FINNMARK VADSO 70 05 N 29 46 E  
OFFICIAL USE ONLY CIA 183278



NORWAY FINNMARK PORSANGERFJORD 70 50 N 26 20 E  
OFFICIAL USE ONLY CIA 183279



NORWAY FINNMARK PORSANGERFJORD 70 50 N 26 20 E  
OFFICIAL USE ONLY CIA 183280



7-149  
7-141-N

Vaduo  
FINNMARK  
70 05N  
29 #6E

7-159  
N-162-196

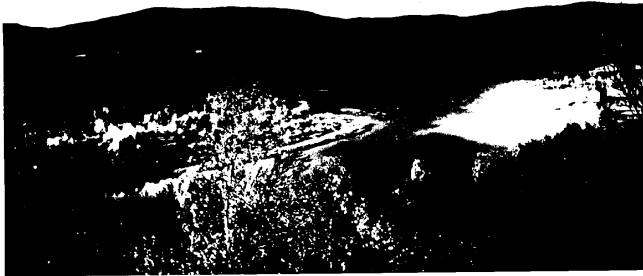
7-141  
N-209

7-94  
N-52



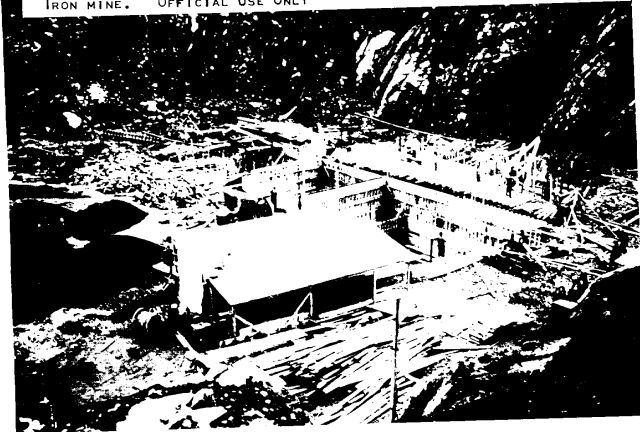
NORWAY FINNMARK NEIDEN 69 43 N 30 00 E  
ARM OF VARANGER FJORD IN FOREGROUND.  
OFFICIAL USE ONLY

CIA 183282



NORWAY FINNMARK KIRKENES 69 43 N 30 03 E  
IRON MINE. OFFICIAL USE ONLY

CIA 183283



7-14

N-189

ALTA


88-L

74-N

NEIDEN

7-171

mine at  
Kurkeses

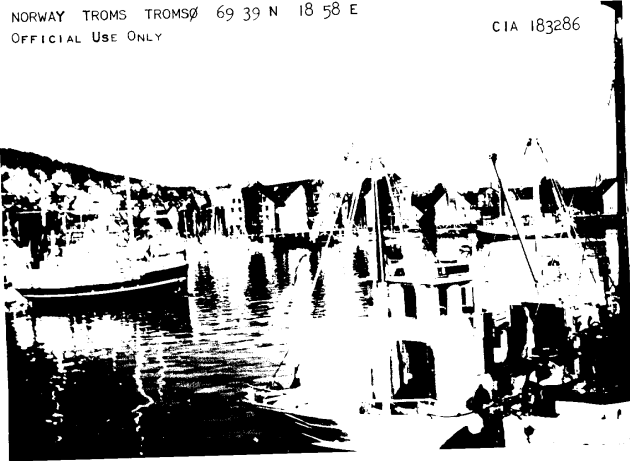


N-314



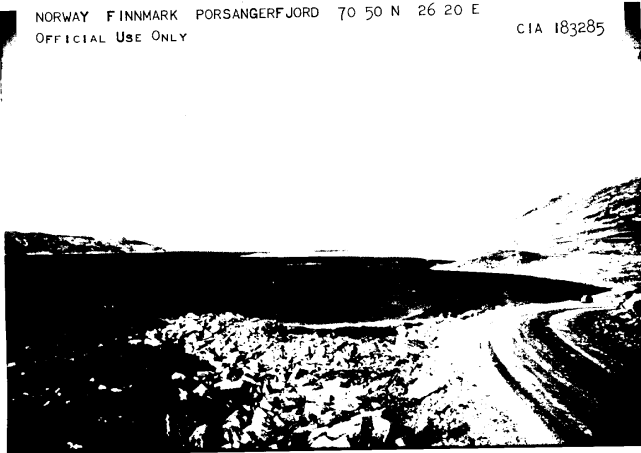
NORWAY TROMS TROMSØ 69 39 N 18 58 E  
OFFICIAL Use ONLY

CIA 183286



NORWAY FINNMARK PORSANGERFJORD 70 50 N 26 20 E  
OFFICIAL Use ONLY

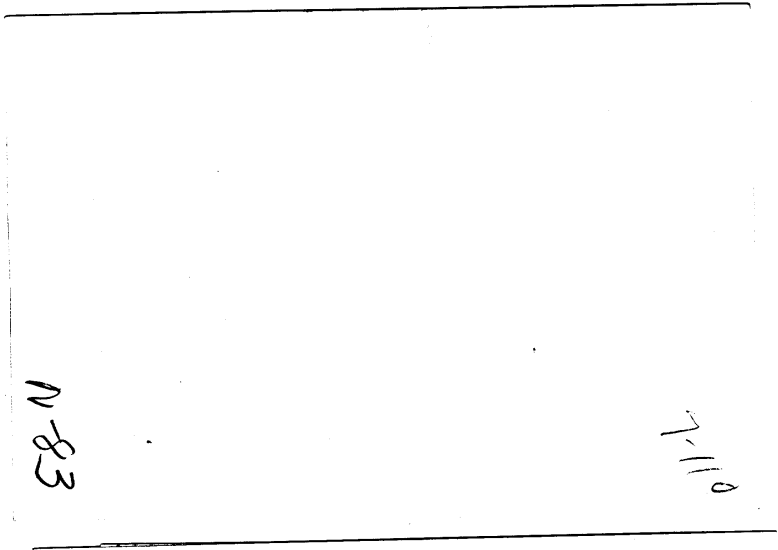
CIA 183285



96-4

N-54

Porsangerfjord  
Denmark



N-83

7-110

N-51

7-93

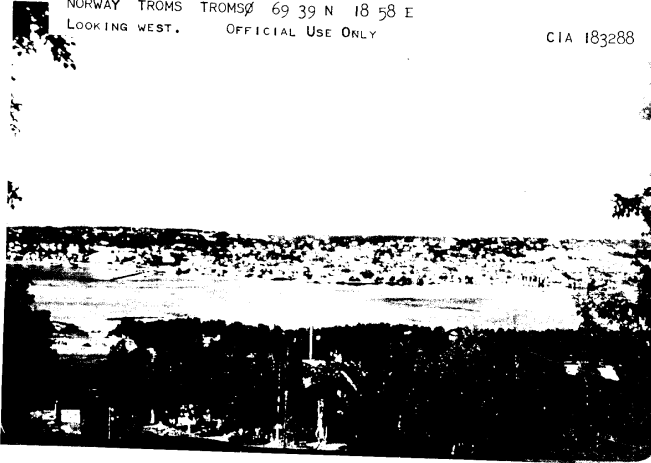
NORWAY TROMS TROMSØ 69 39 N 18 58 E  
LOOKING NORTHWEST. OFFICIAL USE ONLY

CIA 183287



NORWAY TROMS TROMSØ 69 39 N 18 58 E  
LOOKING WEST. OFFICIAL USE ONLY

CIA 183288





83  
Tromsø  
looking northwest

N-281

Tromsø  
looking West

7-184

N-266

NORWAY TROMS KVAENANGENFJORD 70 00 N 21 45 E  
OFFICIAL USE ONLY

CIA 183289



NORWAY SOR TRONDELAG TRONDHEIM 63 25 N 10 25 E  
OFFICIAL USE ONLY

CIA 183290



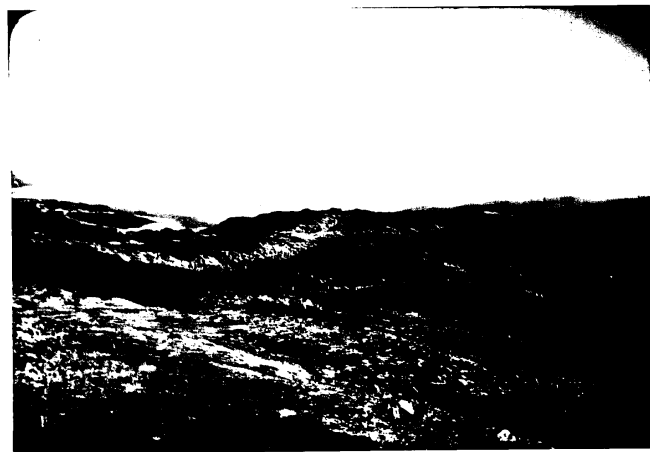
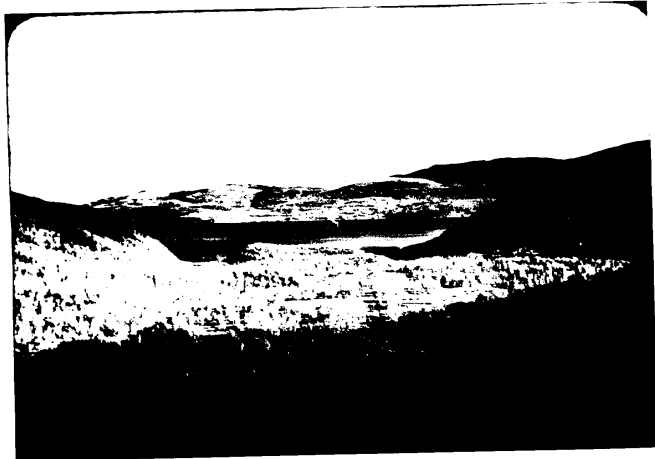
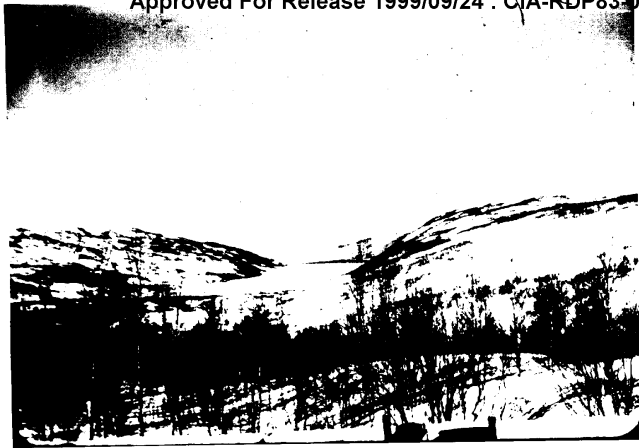
*Kvaerangerfjord*

*N-287*

*7-173*

*Trondheim*

*N-318*



7-11-67

N-1987

Gratangen

N-35

7-19

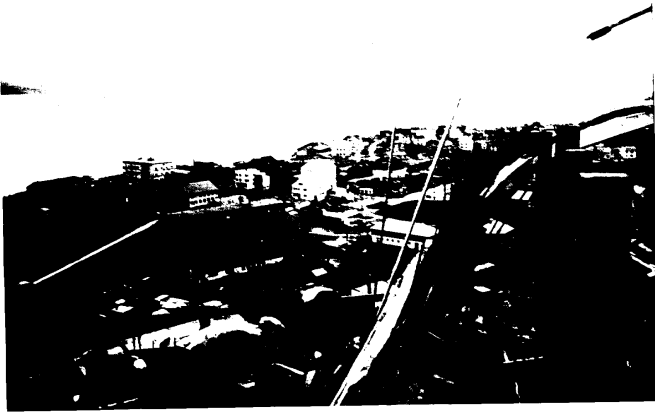
N-68

7-101

7-101-6

Laksefjord

N-70



7-198

N-252

Kurkenes ✓

7-198

N-253

Alta at Bossekop ✓

7-188

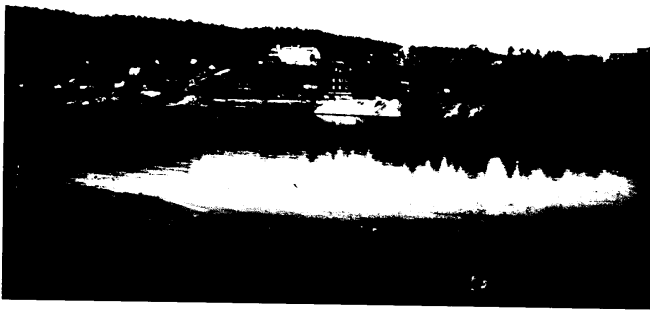
N-260

Reservoir at Hammerfest ✓

N-363

7-186

✓ Hammerfest





Hammerfest

N-283

7-1-77

Karasyok

N-331? 18h

Karasyok

N-283

7-1-77

must form

breathin?

18h

F-49



Lake on vidda  
near Solovome

N-298  
868-N

7-18  
592-N

7-185

Ironap

exper. person  
on Ironap  
used toward  
Koolby

N-382

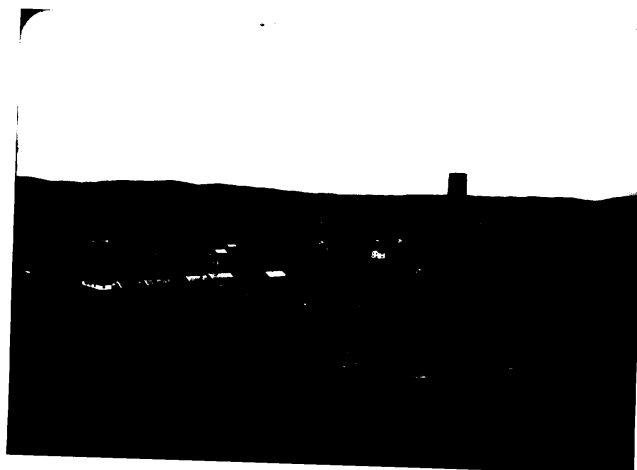
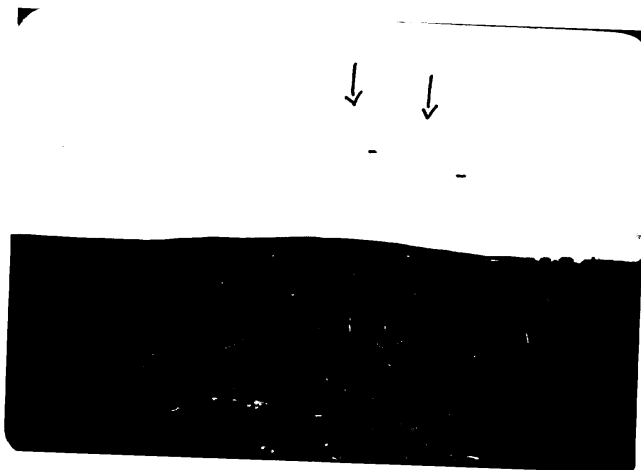
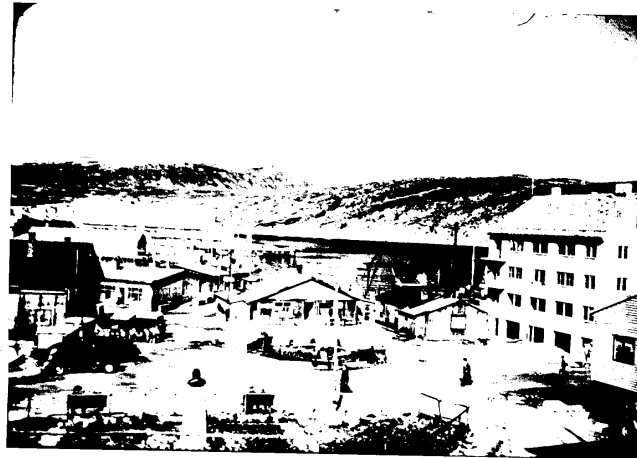
7-83

looking

experimental  
person on  
Ironap

N-348  
868-N

7-195



123  
7-8-1

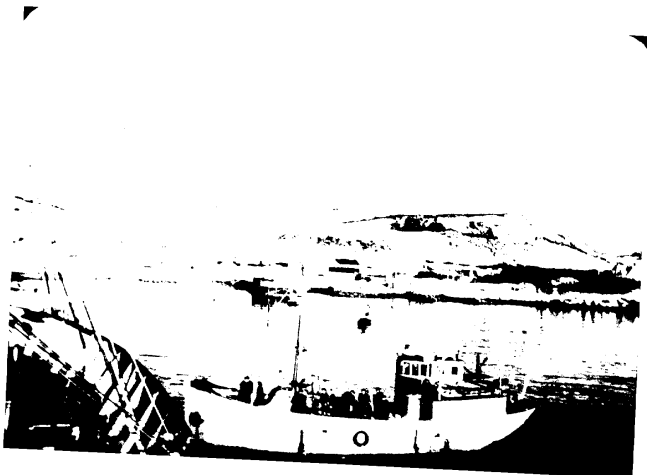
7-8-11

Looking at Irons  
from hill on mainland

N-85  
7-11-12

N-87  
7-11-14

7-8-1  
N-110



N-100

7-30

N-130

8-18

N-150

9-6

7-14

N-173





PA-N

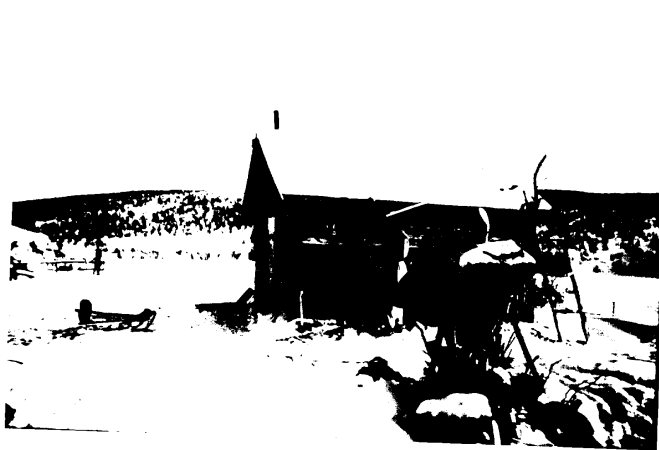
9-22

9-119

N-920

N-138

9-53

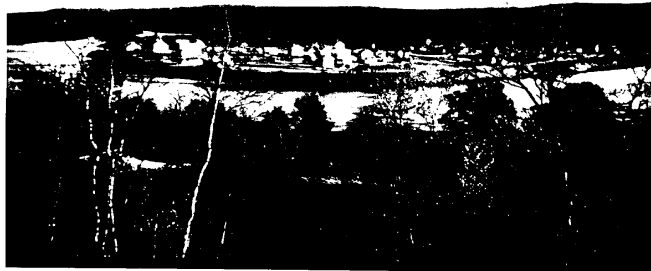


7-23  
N-285

7-239  
N-286

7-189  
N-256

7-172  
N-315



7-176  
N-330  
no number

7-178  
N-333

7-179  
N-334

N-339  
Beckman  
7-181



7-118

N-342

16-N

7-118

611-N

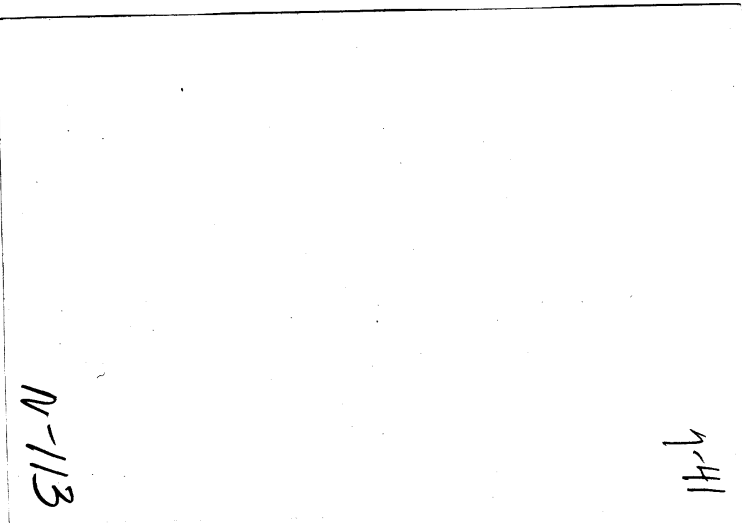
7-119





841-6

608-N



N-113

9-41