

USSR ASIATIC RSFSR SVERDLOVSK OBLAST KIROVGRAD
KALATA COPPER MINE. 1935-1936
CIA 153556



USSR
GOLD BRIDGE AT UNIDENTIFIED MINE, 1935-1936.
OFFICIAL USE ONLY

CIA 153551

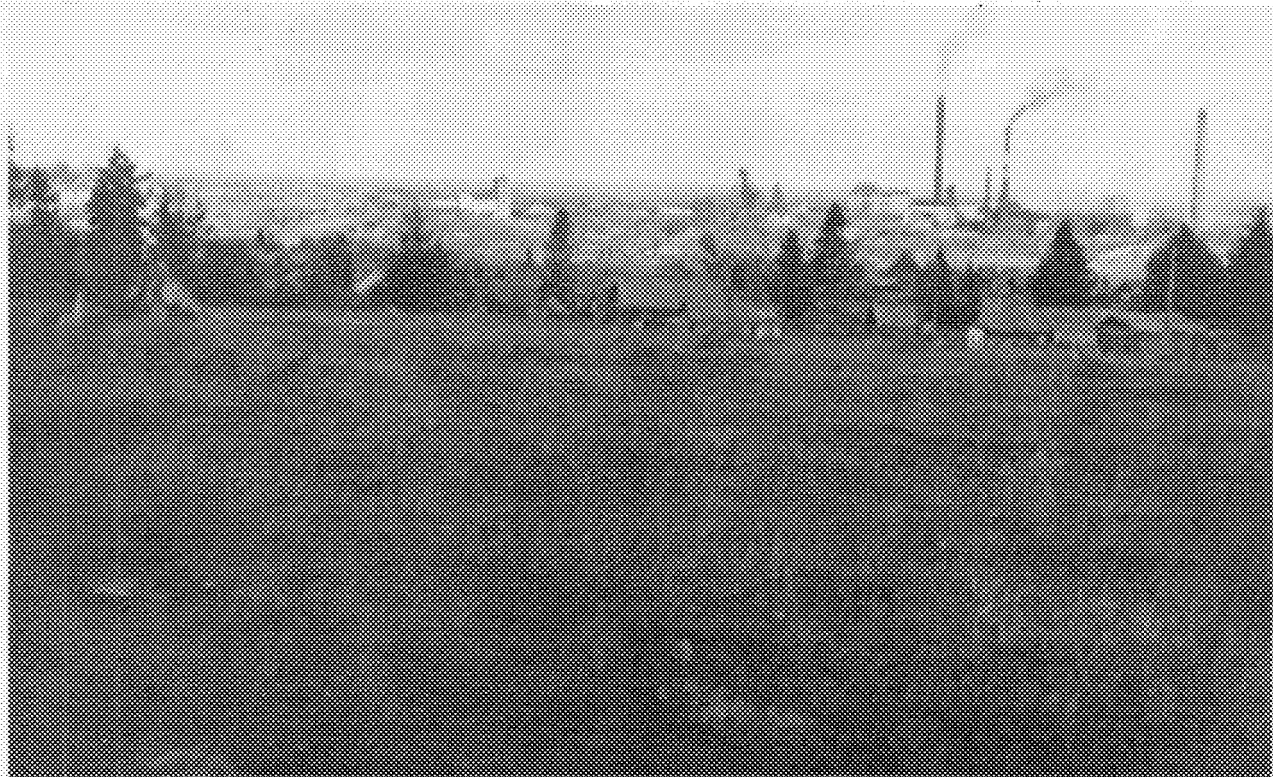


29N USSR ASIATIC RSFSR SVERDLOVSK OBLAST KIROVGRAD

57 27 Approved For Release 1999/09/10 : CIA-RDP83-00423R001700910002-1

OFFICIAL USE ONLY

CIA 153553



29N USSR ASIATIC RSFSR SVERDLOVSK OBLAST KIROVGRAD

57 27 N 60 03 E NEAR KALATA COPPER MINE. 1935-1936.

OFFICIAL USE ONLY

CIA 153554



3N USSR KAZAKH SSR LENINGORSK 50 22 N 83 22 E
Approved For Release 1999/09/10 : CIA-RDP83-00423R001700910002-1
1935-1936. OFFICIAL USE ONLY CIA 153552



29N USSR ASIATIC RSFSR SVERDLOVSK OBLAST KIROVGRAD
57 27 N 60 03 E KALATA COPPER MINE. 1935-1936.
OFFICIAL USE ONLY CIA 153555



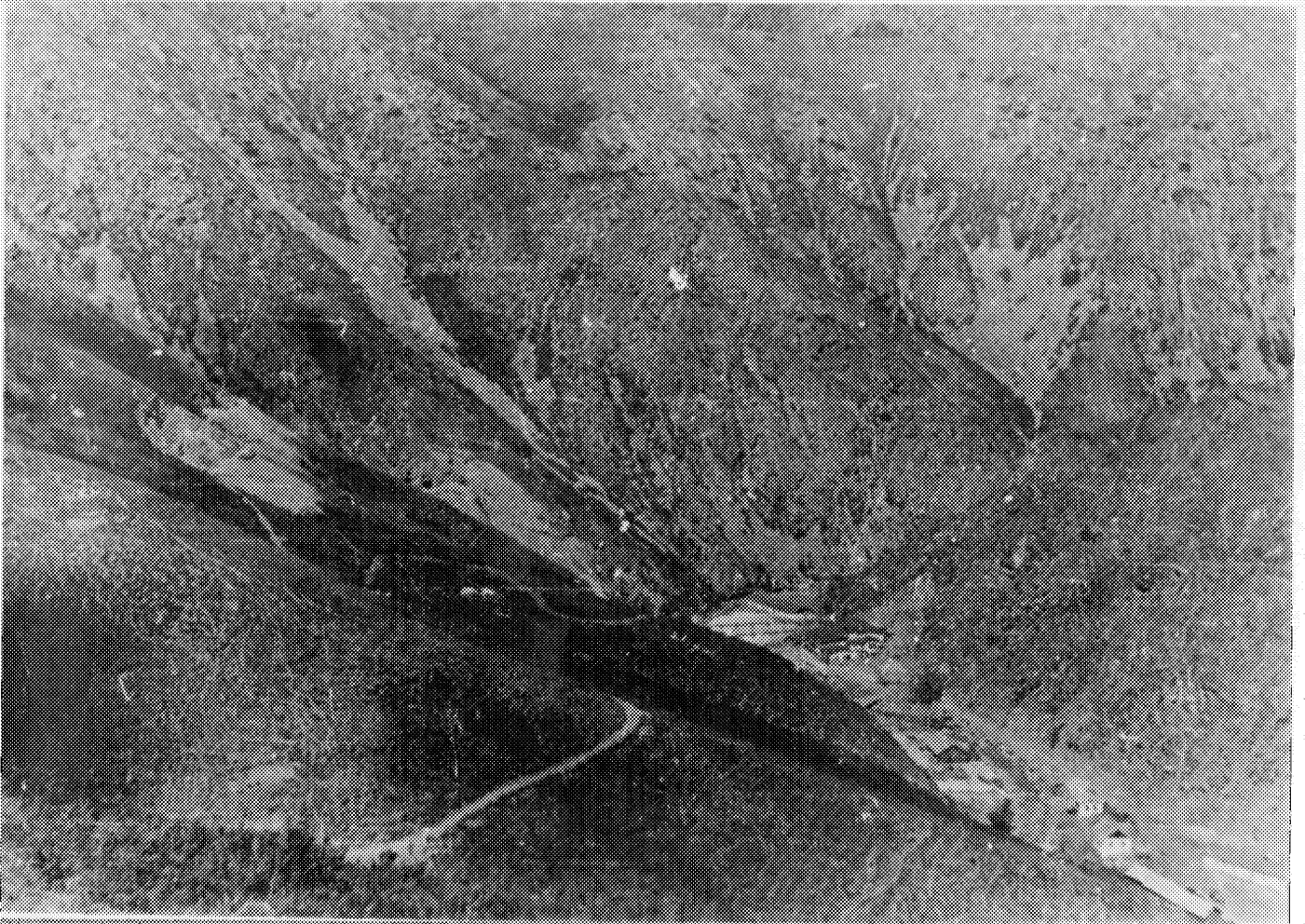
3N USSR KAZAKH SSR

MANCA MINES

OFFICIAL USE ONLY

Approved For Release 1999/09/10 : CIA-RDP83-00423R001700910002-1 1936.

CIA 153567



Approved For Release 1999/09/10 : CIA-RDP83-00423R001700910002-1

39N USSR ASIATIC RSFSR CHITA OBLAST
MILITARY HIGHWAY UNDER CONSTRUCTION SOUTH OF MOGOCHA. APPROX. 53 30 N 120 00 E.
1935-1936. OFFICIAL USE ONLY CIA 153570



Approved For Release 1999/09/10 : CIA-RDP83-00423R001700910002-1

Approved For Release 1999/09/10 : CIA-RDP83-00423R001700910002-1

39N USSR ASIATIC RSFSR CHITA OBLAST
GOLD MINE BETWEEN MOGOCHA AND SHILKA RIVER. APPROX. 53 15 N 118 45 E. 1935.
OFFICIAL USE ONLY

CIA 153569

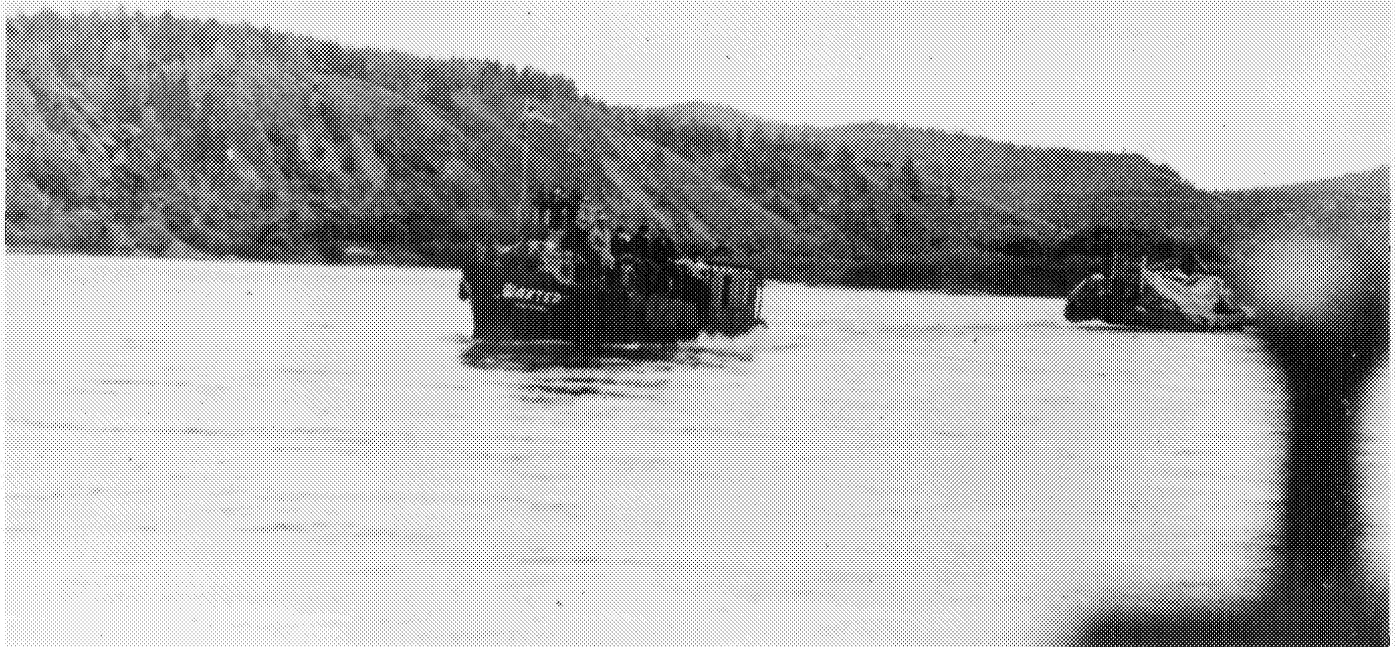


Approved For Release 1999/09/10 : CIA-RDP83-00423R001700910002-1

Approved For Release 1999/09/10 : CIA-RDP83-00423R001700910002-1

39N USSR ASIATIC RSFSR CHITA OBLAST
TUG AND BARGE ON SHILKA RIVER NEAR UST-KARSK (52 43 N 118 48 E). 1935.
OFFICIAL USE ONLY

CIA 153568



Approved For Release 1999/09/10 : CIA-RDP83-00423R001700910002-1

Approved For Release 1999/09/10 : CIA-RDP83-00423R001700910002-1

5N USSR KAZAKH SSR
ROAD TO MANCA MINES NEAR SINKIANG BORDER. APPROX. 46 15 N 85 30 E. 1935.
OFFICIAL USE ONLY

CIA 153566



Approved For Release 1999/09/10 : CIA-RDP83-00423R001700910002-1

Approved For Release 1999/09/10 : CIA-RDP83-00423R001700910002-1

3N USSR KAZAKH SSR UST-KAMENOGORSK RAJON
IRTYSH RIVER. LOOKING NORTH. 1936.

OFFICIAL USE ONLY

CIA 153565

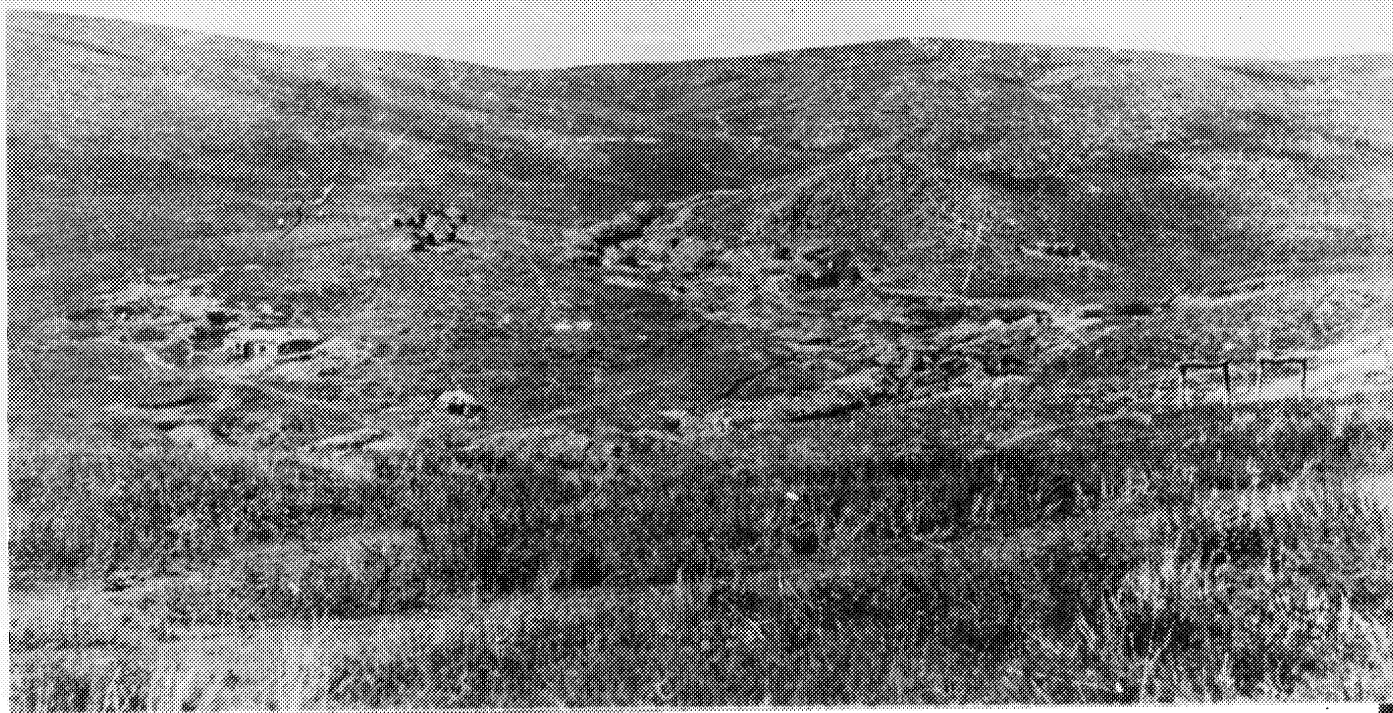


Approved For Release 1999/09/10 : CIA-RDP83-00423R001700910002-1

Approved For Release 1999/09/10 : CIA-RDP83-00423R001700910002-1

3N USSR KAZAKH SSR
SUMMER HOMES OF NOMADS IN ALTAI MOUNTAINS. APPROX. 50 30 N 84 15 E. 1955.
OFFICIAL USE ONLY

CIA 153564

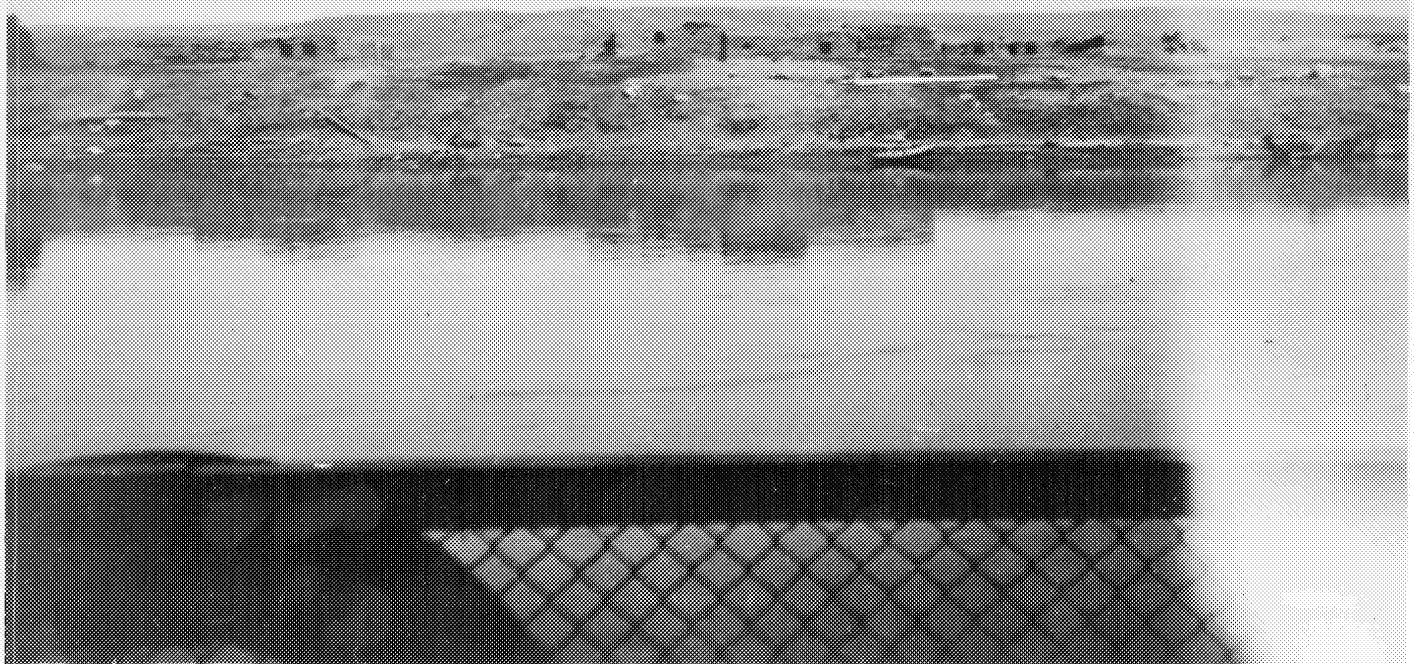


Approved For Release 1999/09/10 : CIA-RDP83-00423R001700910002-1

Approved For Release 1999/09/10 : CIA-RDP83-00423R001700910002-1

5N USSR KAZAKH SSR
IRTYSH RIVER JUST NORTH OF SEMIPALATINSK (50 28 N 80 13 E). 1955.
OFFICIAL USE ONLY

CIA 153563



Approved For Release 1999/09/10 : CIA-RDP83-00423R001700910002-1

Approved For Release 1999/09/10 : CIA-RDP83-00423R001700910002-1

3N USSR KAZAKH SSR
WINTER HOMES OF NOMADS ON IRTYSH RIVER NEAR UST-KAMENOGORSK, 1955.
OFFICIAL USE ONLY

GIA 153562

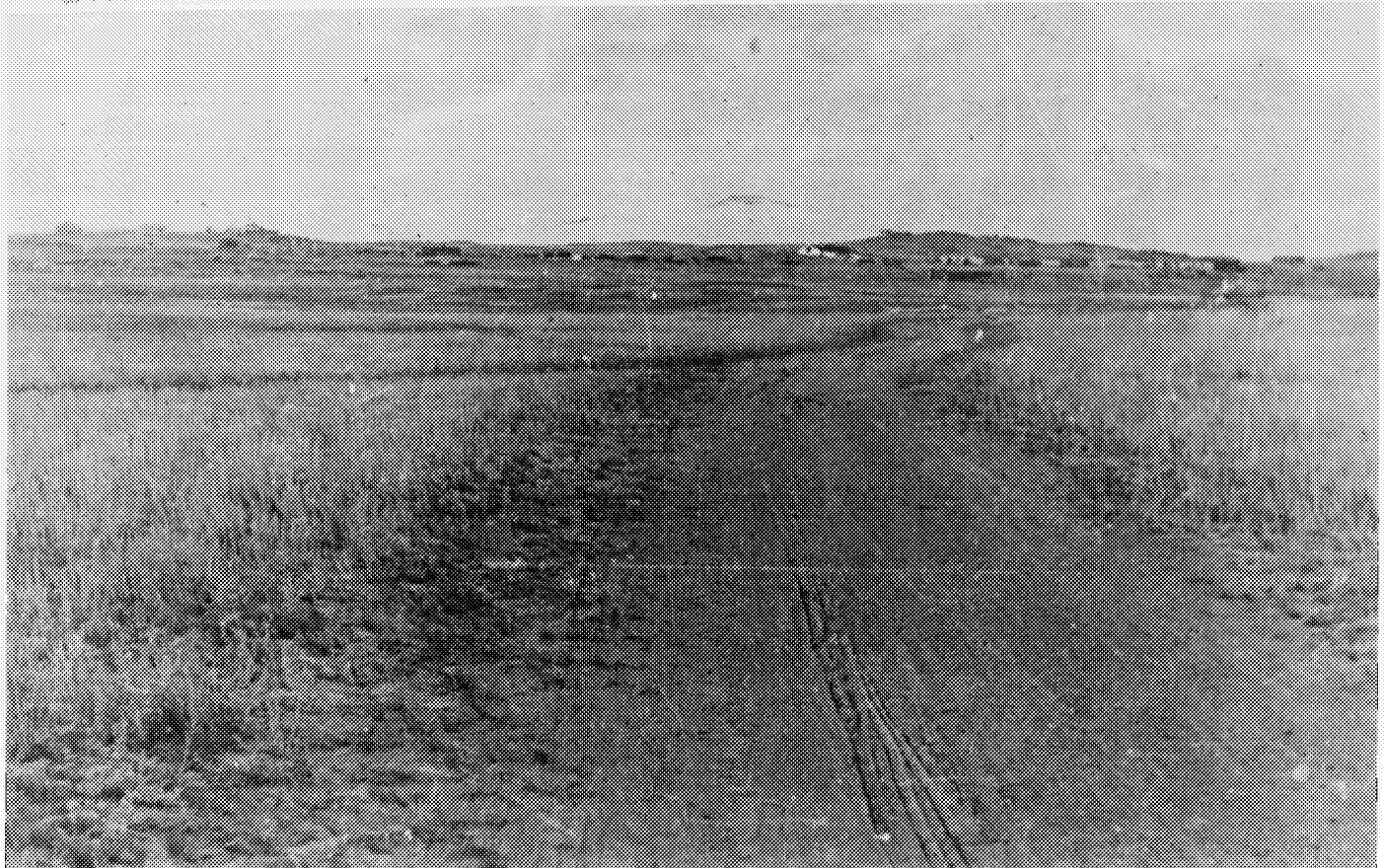


Approved For Release 1999/09/10 : CIA-RDP83-00423R001700910002-1

Approved For Release 1999/09/10 : CIA-RDP83-00423R001700910002-1

3N USSR KAZAKH SSR
STEPPE COUNTRY. GOLD MINE IN BACKGROUND. APPROX. 53 00 N 76 00 E. 1935.
OFFICIAL USE ONLY

CIA 153561



Approved For Release 1999/09/10 : CIA-RDP83-00423R001700910002-1

Approved For Release 1999/09/10 : CIA-RDP83-00423R001700910002-1

19N USSR ASIATIC RSFSR CHKALOV OBLAST
MINE OFFICE NEAR PODOLSKI BUILT PARTLY UNDERGROUND TO AVOID WINTER WINDS. APPROX.
51 45 N 60 15 E. 1935. OFFICIAL USE ONLY CIA 153560

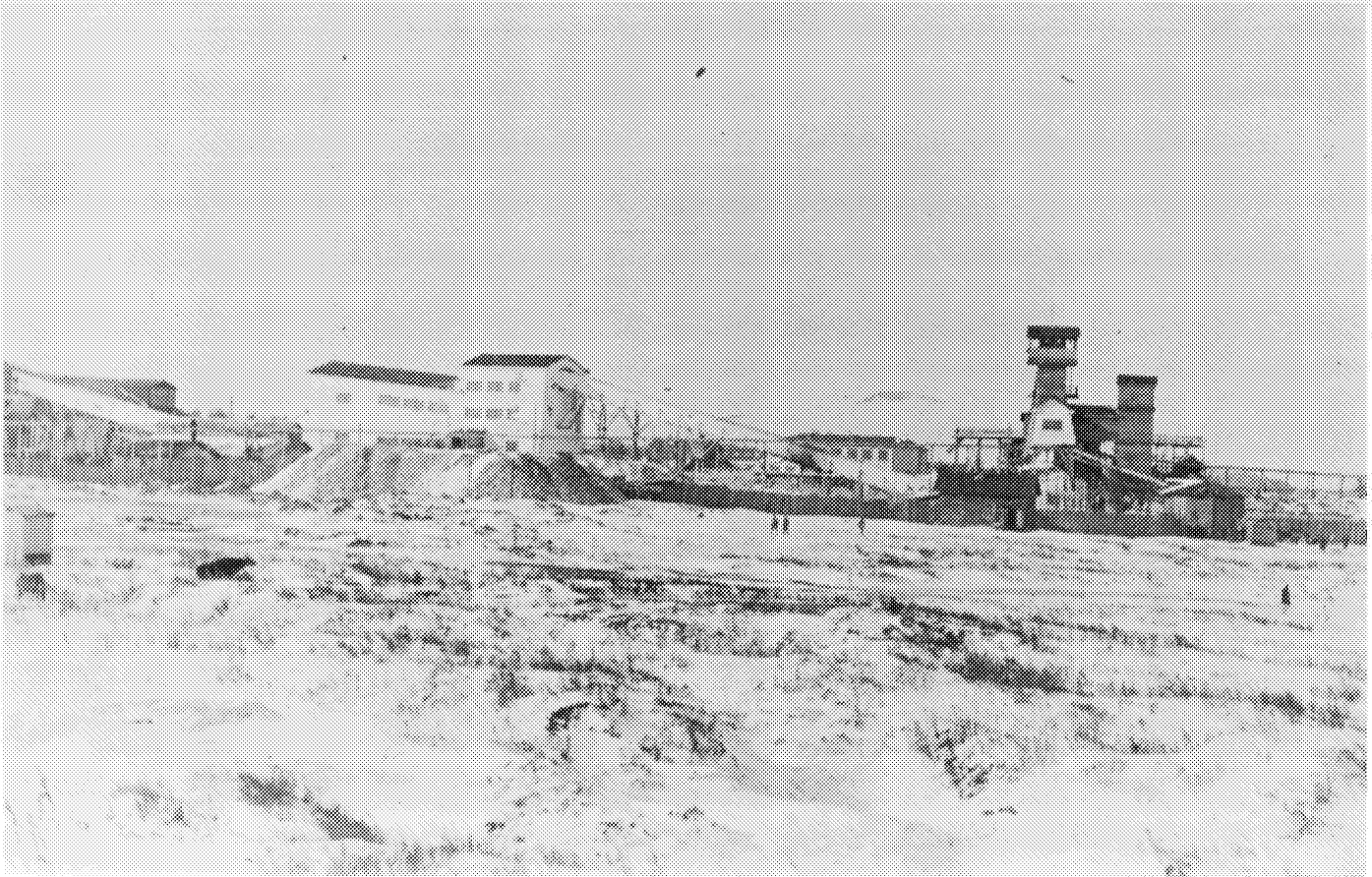


Approved For Release 1999/09/10 : CIA-RDP83-00423R001700910002-1

Approved For Release 1999/09/10 : CIA-RDP83-00423R001700910002-1

19N USSR ASIATIC RSFSR CHELYABINSK OBLAST KOCHKAR 54 27 N 60 48 E
GOLD MINE. SORTING PLANT AND 600-TON MILL. 1955. OFFICIAL USE ONLY

CIA 153559



Approved For Release 1999/09/10 : CIA-RDP83-00423R001700910002-1

Approved For Release 1999/09/10 : CIA-RDP83-00423R001700910002-1

19N USSR ASIATIC RSFSR CHELYABINSK OBLAST KOCHKAR 54 27 N 60 48 E
PROBABLY GOLD MINE IN BACKGROUND. 1935. OFFICIAL USE ONLY

CIA 153558

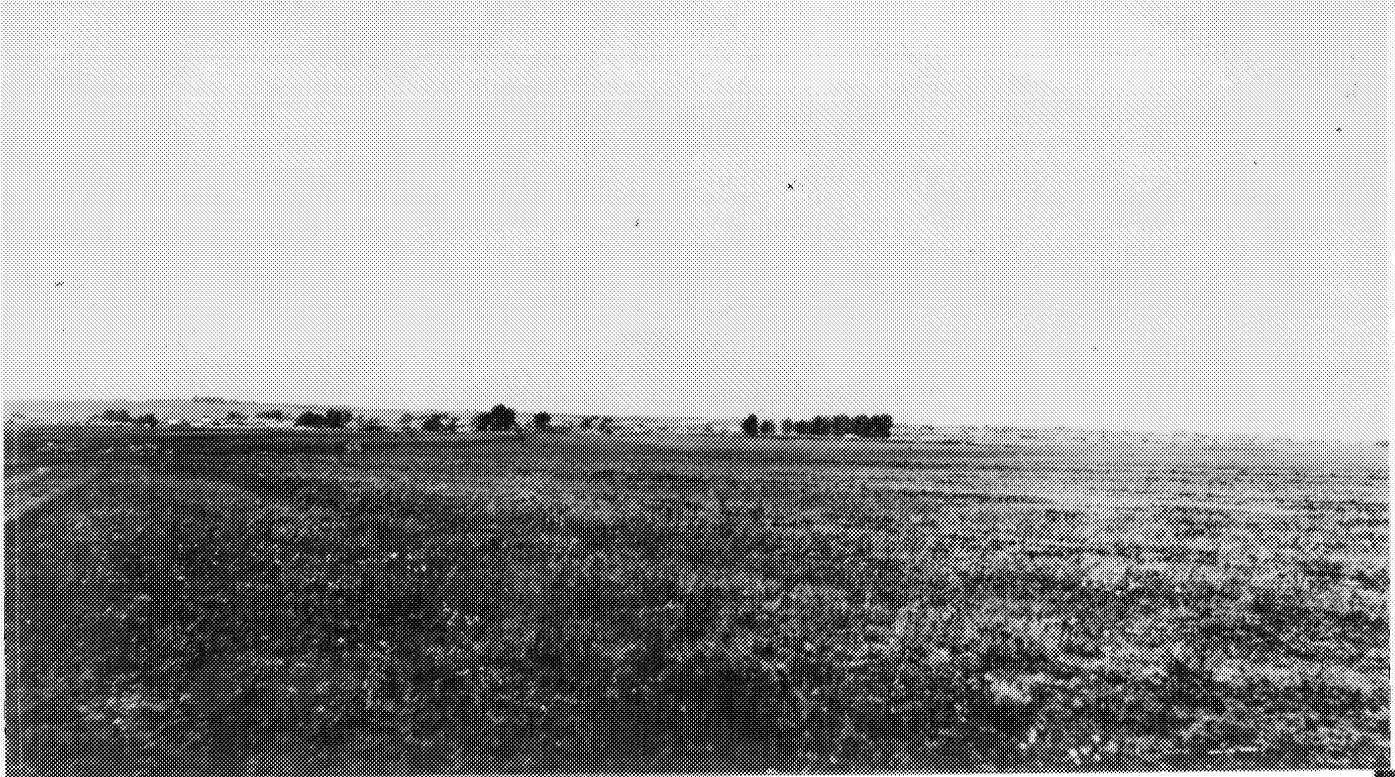


Approved For Release 1999/09/10 : CIA-RDP83-00423R001700910002-1

Approved For Release 1999/09/10 : CIA-RDP83-00423R001700910002-1

19N USSR ASIATIC RSFSR CHELYABINSK OBLAST KOCHKAR 54 27 N 60 48 E
FARMING DISTRICT, 1935. OFFICIAL USE ONLY

CIA 153557



Approved For Release 1999/09/10 : CIA-RDP83-00423R001700910002-1

Approved For Release 1999/09/10 : CIA-RDP83-00423R001700910002-1



No. 16-86. RUSSIA, ALTAI MTS. Approximately $42^{\circ}30'$ N., $84^{\circ}00'$ E. Altai Mts. Looking northwest. Date - 1935.

Approved For Release 1999/09/10 : CIA-RDP83-00423R001700910002-1

Approved For Release 1999/09/10 : CIA-RDP83-00423R001700910002-1



No. 16-N7. RUSSIA, ALTAI MTS. Approximately 42°30' N., 84°30' E.

Approved For Release 1999/09/10 : CIA-RDP83-00423R001700910002-1

Approved For Release 1999/09/10 : CIA-RDP83-00423R001700910002-1



No. 14-66. RUSSIA, KAZAKHSTAN STEPPE. Approximately 53°30' N., 70°30' E. Taken to show almost endless flat country.

Approved For Release 1999/09/10 : CIA-RDP83-00423R001700910002-1

Approved For Release 1999/09/10 : CIA-RDP83-00423R001700910002-1



No. 14-02. RUSSIA, KAZAKHSTAN. Approximately 52°50' N., 70°45' E. Stepnyak mines.
Date - 1935.

Approved For Release 1999/09/10 : CIA-RDP83-00423R001700910002-1

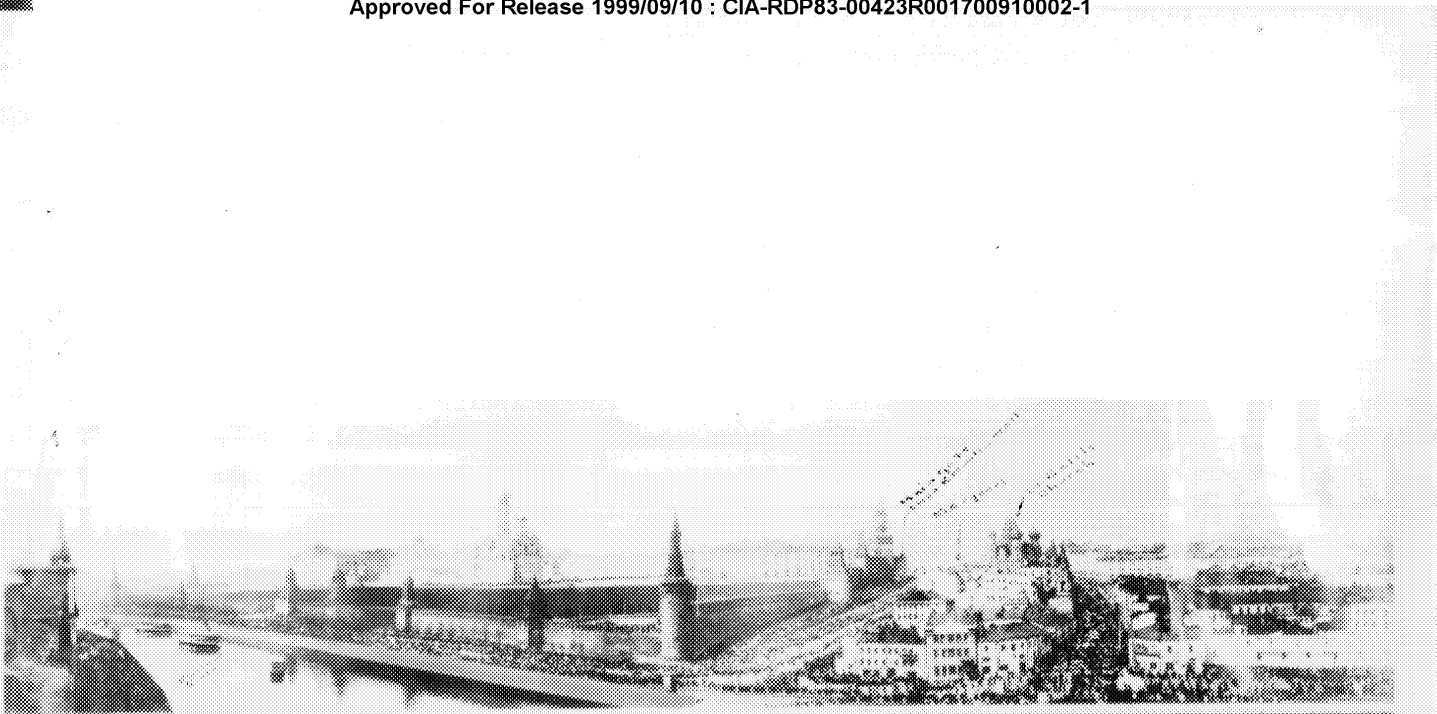
Approved For Release 1999/09/10 : CIA-RDP83-00423R001700910002-1



No. 14-01. RUSSIA, KAZAKSTAN STEPPE. Approximately $53^{\circ}00'$ N., $72^{\circ}30'$ E. Kazakstan
Steppe, east of Stepnyak. Date - 1936.

Approved For Release 1999/09/10 : CIA-RDP83-00423R001700910002-1

Approved For Release 1999/09/10 : CIA-RDP83-00423R001700910002-1



No. 7-12. RUSSIA, MOSCOW. Kremlin-Moscow. Crowds dispersing after passing through Red Square on May Day Parade, 1935. This picture was originally prepared from four Leica snaps.

Approved For Release 1999/09/10 : CIA-RDP83-00423R001700910002-1

RESTRICTED

ROUTING AND CONTROL RECORD

DO NOT DETACH FROM 'ON LOAN' DOCUMENTS

25 January 1955

DATE

TO:

Graphics Register

ATTN:

BUILDING

ROOM NO.

TITLE

26 Black and White Photographs of Mining Areas (USSR)

25X1A2g



REMARKS

RETAIN

ON LOAN

DOCUMENT(S)
FOR RETENSION
BY ADDRESSEE

DOCUMENT(S) MUST BE RETURNED TO
CONTACT DIVISION/00
BY (DEADLINE)

25X1A9a

FROM:

CONTACT DIVISION/00



BUILDING

ROOM NO.

EXTENSION

25X1A6a



1808

2576

SECRET

CONFIDENTIAL

RESTRICTED

(20-40)