

*BEST COPY
Available*

6/17/98

SECTION - TOWN
MANILA

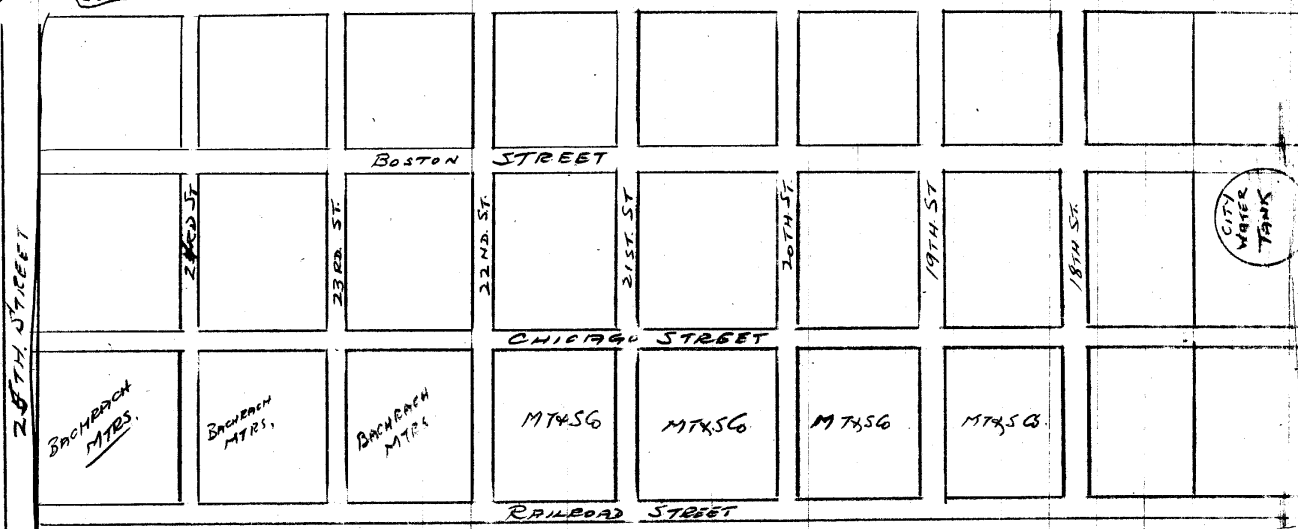
BAY

PIER AREA - SOUTH HARBOR

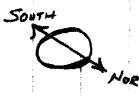
LUNETTA



ENCLOSURE "A"



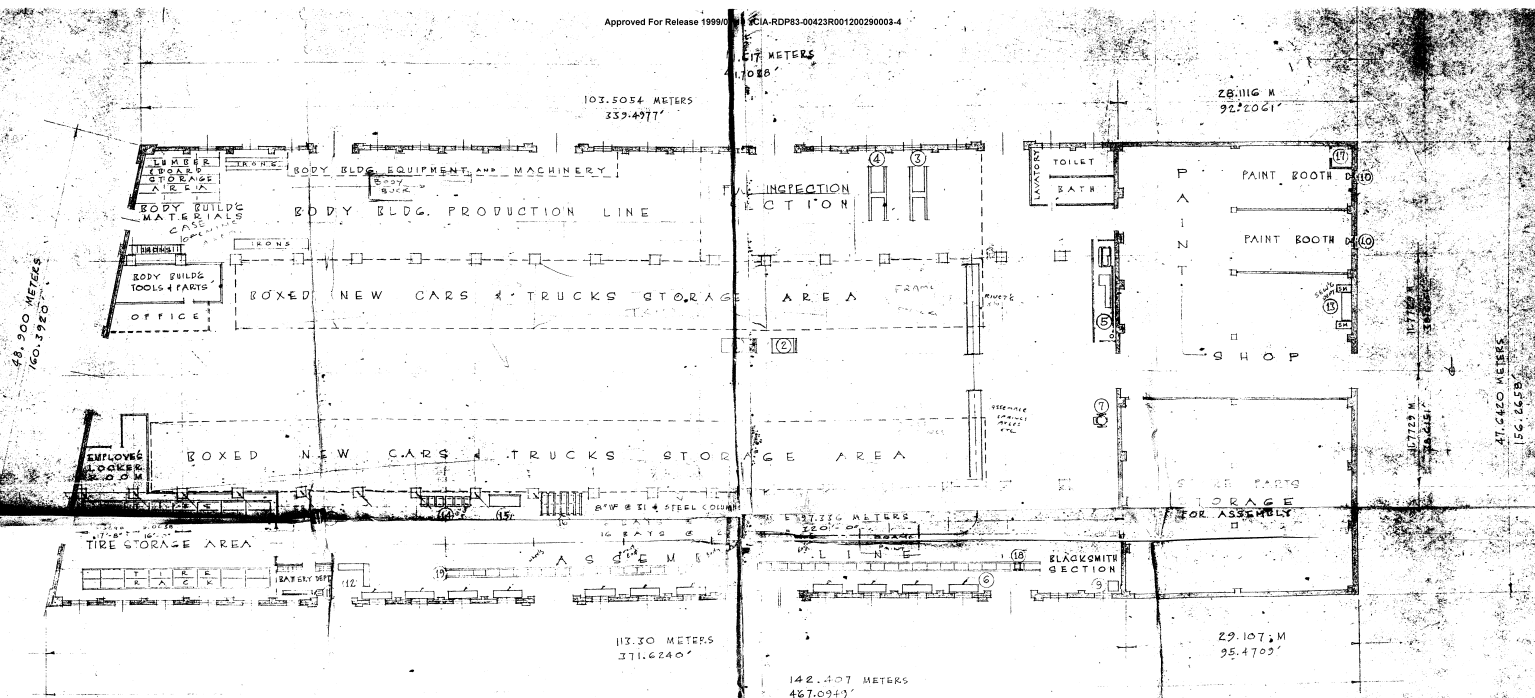
THIS AREA WAS BEING OPENED FOR COMMERCIAL PURPOSES IN 1916



MALACON DRIVE

(PUBLIC GOLF COURSE)

TO BUSINESS DISTRICT
10 KENT + SOUTH



FLOOR PLAN
SCALE 1:200 METERS

LEGEND:

1. HYSTER MODEL "H" FORK LIFT TRUCK - 1775 LBS. LIFT 50 UNITS PER HOUR W/ SPECIAL 12" LOAD ARM - CAP. 15,000 LB.
2. CLARK FORK LIFT MODEL "D" LIFT TRUCK - 1500 LBS. CAPACITY W/ 18" HOIST LIFT AND SPECIAL 12" LOAD ARM.
3. GARDNER AND WHOLEY MODEL "D" TYPE, 1500 LBS. CAPACITY.
4. "REAR" LIFT MODEL "D" TYPE, 1500 LBS. CAPACITY.
5. AIR COMPRESSOR, PORTABLE, 100 PSI, 100 GPM.
6. AIR COMPRESSOR, PORTABLE, 100 PSI, 100 GPM.
7. AIR COMPRESSOR, PORTABLE, 100 PSI, 100 GPM.
8. AIR COMPRESSOR, PORTABLE, 100 PSI, 100 GPM.
9. AIR COMPRESSOR, PORTABLE, 100 PSI, 100 GPM.
10. AIR COMPRESSOR, PORTABLE, 100 PSI, 100 GPM.
11. AIR COMPRESSOR, PORTABLE, 100 PSI, 100 GPM.
12. AIR COMPRESSOR, PORTABLE, 100 PSI, 100 GPM.
13. AIR COMPRESSOR, PORTABLE, 100 PSI, 100 GPM.
14. AIR COMPRESSOR, PORTABLE, 100 PSI, 100 GPM.
15. AIR COMPRESSOR, PORTABLE, 100 PSI, 100 GPM.
16. AIR COMPRESSOR, PORTABLE, 100 PSI, 100 GPM.
17. AIR COMPRESSOR, PORTABLE, 100 PSI, 100 GPM.
18. AIR COMPRESSOR, PORTABLE, 100 PSI, 100 GPM.

• ASSEMBLY PLANT •
MANILA TRADING & SUPPLY CO.
 PORT AREA
 MANILA, PHILIPPINES
 J2K 720 93



| | | | |
|--|---------------|---------------|--------------|
| MARILLA ENGINEERING & SURVEYING CO. | | | |
| PRESENT & FUTURE INSTALLATIONS ON LOTS 1, 2, 3 | | | |
| DATE OF PLAN | DRAWN BY | CHECKED BY | SCALE |
| 10-17-57 | J. L. HANCOCK | J. H. HANCOCK | 1" = 100'-0" |
| SHEET NO. | | SHEET NO. | |
| MTI-28 | | MTI-28 | |